

SRG INVESTOR UPDATE

HALF YEAR ENDED 31 DECEMBER 2016



**MAKING
THE
COMPLEX
SIMPLE**

DISCLAIMER AND IMPORTANT NOTICE



Information, including forecast financial information in this presentation should not be considered as a recommendation in relation to holding, purchasing or selling shares, securities or other instruments in SRG Limited or any other company. Due care and attention has been used in the preparation of forecast information. However, actual results may vary from forecast and any variation may be materially positive or negative.

Forecasts, by their very nature, are subject to uncertainty and contingencies may occur which are outside the control of SRG Limited. Before making or varying any decision in relation to holding, purchasing or selling shares in SRG Limited, investors should consider the appropriateness of that investment in light of their individual investment objectives and financial situation and should seek their own independent professional advice.

All currency is denominated in Australian dollars.

ZERO HARM

- Continuing to improve
 - LTIFR of 2.5
 - TRIFR of 18.3
- Critical Risk Progress
- Innovative Equipment

FINANCIAL RESULT

- Revenue up 45% on 1H FY16
- NPBT up 143% on 1H FY16
- 128% increase on 1H FY16 in EPS to 7.3cps

SHAREHOLDERS

- Cash in hand \$25.9m
- No net debt
- 50% increase in interim dividend to 3c
- 50% increase in FY17 share price

WORK WINNING

- New mining contracts
- Dams and bridges
- Geotech in Civil
- Good progress on Building and Services in East

WORK IN HAND

- WIH of \$249m
- FY17 WIH of \$85m
- \$1,100m pipeline of opportunities
- Positive trend

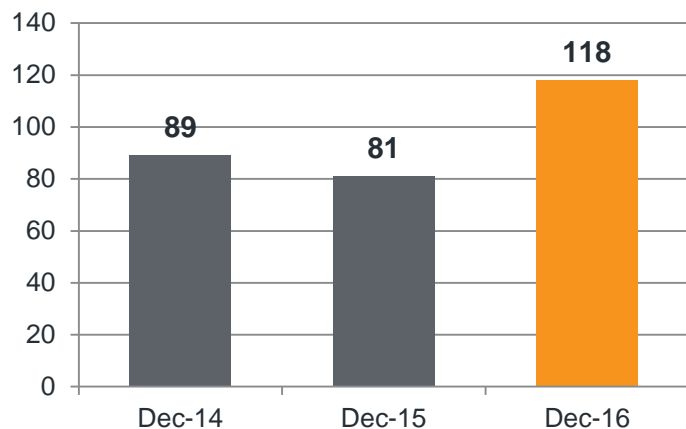
EXPANSION

- Dam Strategy
- SureLok™ Progress
- New Zealand entry
- Hong Kong pipeline
- M&A

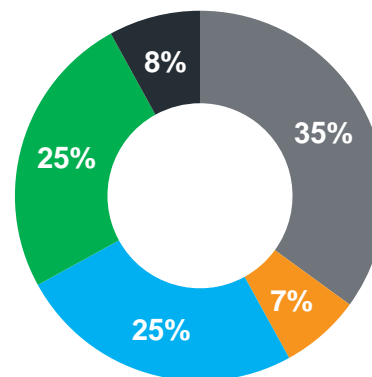
FINANCIAL PERFORMANCE



Revenue (\$M)

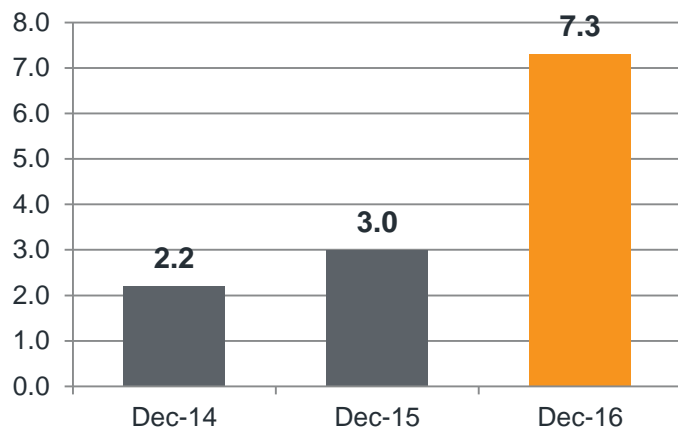


Revenue (%)

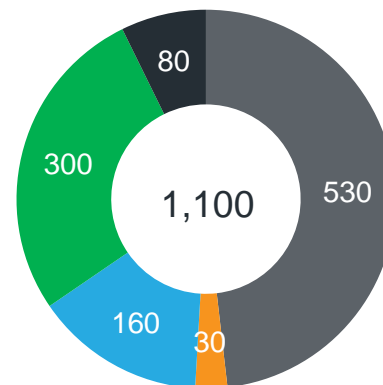


■ Civil ■ Products ■ Mining ■ Building ■ Services

NPBT (\$M)



Work Opportunity Pipeline (\$M)



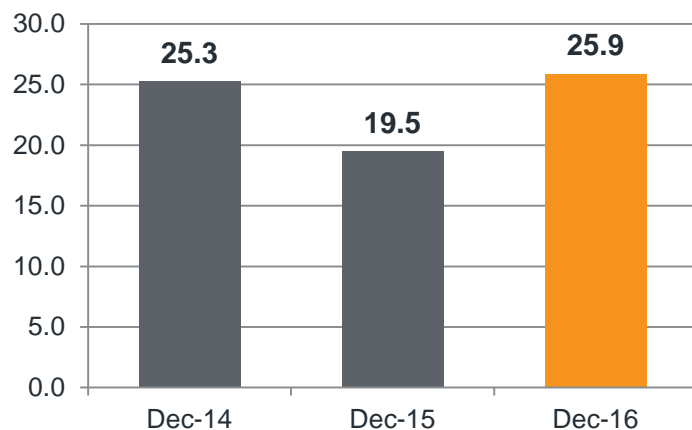
■ Civil ■ Products ■ Mining ■ Building ■ Services

Note FY15 NPBT result is pre ETP adjustment

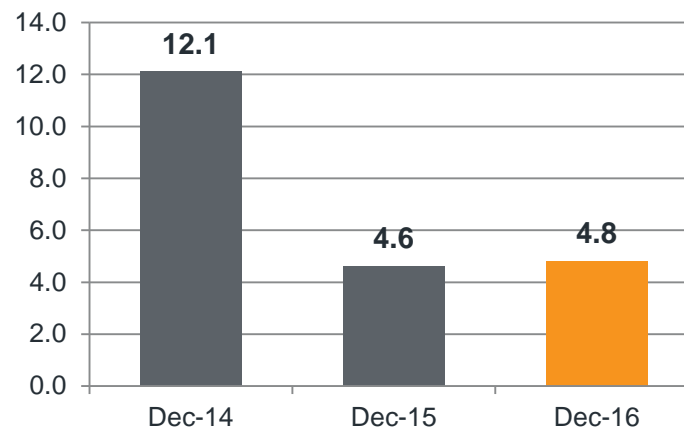
FINANCIAL STRENGTH



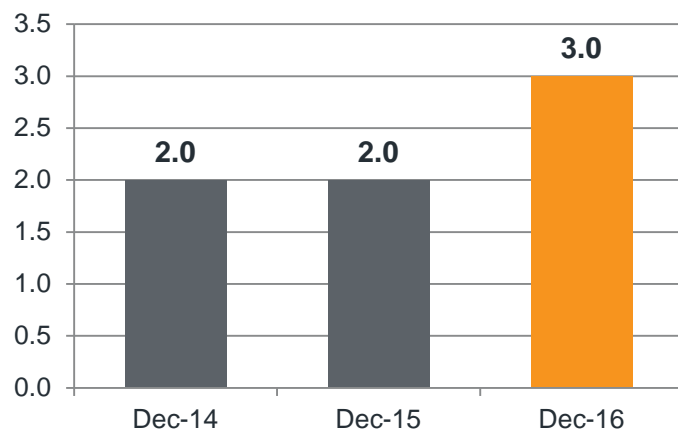
Cash at Bank (\$M)



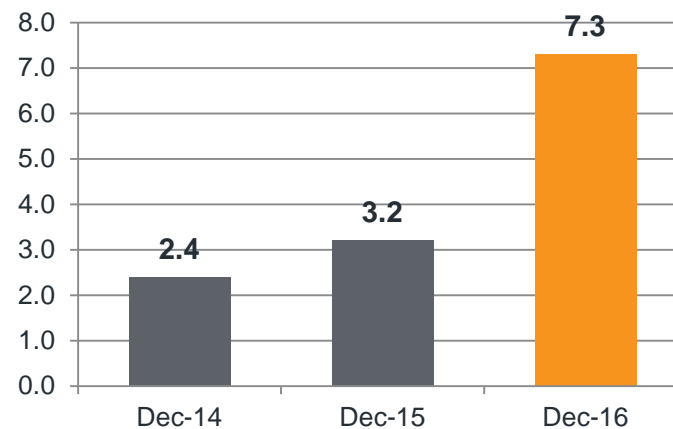
Financial Liabilities (\$M)



Dividends (cents)



Earnings per share (cents)



BUSINESS UNIT OVERVIEW



MINING

- Solid Performance
- High Asset Utilisation
- Resolute Gold win
- Peabody contract
- Geotech expanding

CIVIL

- Bridge wins
- Dam wins
- Good pipeline
- Focus on delivery
- More scale required

BUILDING

- Excellent execution
- Good WIH
- 2H better than 1H
- East Coast pipeline remains strong

SERVICES

- High demand on East Coast
- Challenging in West
- NSW / Qld entry
- Focus on recurring revenue

PRODUCTS

- Steady demand for Monitoring business
- SureLok™ > 10,000 sold & good pipeline
- M&A focus

INTERNATIONAL

- Customer leverage
- New Zealand entry
- Hong Kong pipeline
- Tank opportunities
- Qatar World Cup

WHERE WE ARE GOING



FOUNDATION

2015

Develop vision / strategy ✓

Drive Zero Harm ✓

Right structure /
capability ✓

Develop brand / value
proposition ✓

Rigorous review
mechanisms in place ✓

Formalise relationships
with key stakeholders ✓

Drive improvement /
efficiency ✓

Resolve legacy issues ✓

DEVELOPMENT

2016 - 2019

Execute strategy

Projects delivered above
green sheet

Secure specialised civil
projects of scale

Organic growth in target
markets

Growth in
complementary services
/ markets

Selective acquisitions to
accelerate growth

Brand recognition

MARKET LEADERSHIP

2020 +

Zero Harm industry
leader

Global complex service
partner of choice

Strong brand

Employer of choice

ASX top 200

Consistent performance

Above market returns

Diversified international
specialist contractor

BUSINESS STREAM FOCUS



MINING

Optimise assets and operational efficiency, cross sell additional services & drive selective growth.

PRODUCTS

Expand portfolio through new product development (SureLok™, Monitoring, etc).

CIVIL

Secure specialised civil projects of scale in water / bridge / tanks sectors.

BUILDING

Maintain market leadership, leverage alliances & drive operational efficiency.

SERVICES

Drive step change growth in infrastructure remediation through innovative specialist solutions.

INTERNATIONAL

Grow and expand geographical footprint through leveraging core partnerships and capability.

- Continue to leverage our diverse offering and geographic footprint
- Drive scale to better leverage technical and engineering resource
- Strong balance sheet and work in hand provides financial strength and security
- Focusing on profitable growth across the business streams – projects not targeted solely for revenue growth
- Continue investment spend on international expansion program in FY17
- Progress targeted M&A opportunities to complement organic pipeline
- Expect returns to shareholders to increase through revenue and profit growth in FY17 compared to FY16

APPENDIX



Transportation of world record capacity ground anchor

**MAKING
THE
COMPLEX
SIMPLE**

OUR BUSINESS STREAMS



MINING

- Drill and Blast
- Ground Support
- Engineering
- Technical Access
- Mine Infrastructure
- Underground
- Open Pit
- Civil
- Monitoring
- Remedial



CIVIL

- Bridge Construction
- Bridge Maintenance
- Ground Anchors
- Silo and Tank Construction
- Heavy Lifting
- Load Handling
- Slipform
- Stay Cable Systems
- Remedial



BUILDING

- Post-Tensioning
- Slab on Ground
- Industrial Pavements
- Multistorey Post-Tensioning
- Slipform
- Reinforcement
- Remedial



SERVICES

- Diagnosis and Investigation
- Concrete Repair
- Structural Strengthening
- Waterproofing
- Precision Grouting
- Façade Restoration
- Architectural Restoration
- Cathodic Protection
- Specialised Services



PRODUCTS

- Macalloy Bar
- Concrete Canvas
- Rock Mesha
- Ground Support Products
- Geotechnical Equipment
- SureLok
- Ducting
- Duct Chairs
- Barrel and Wedges
- Castings

OUR GEOGRAPHICAL SPREAD



**MAKING THE
COMPLEX
SIMPLE**

OUR PROJECT EXPERIENCE



Drill & Blast



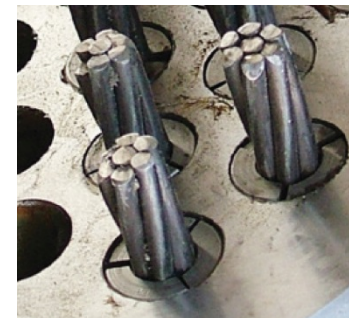
Elizabeth Quay Bridge



Barangaroo



Loy Yang



Product Manufacture



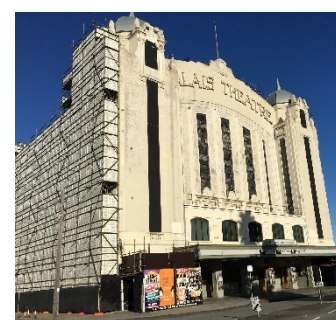
Drill & Blast



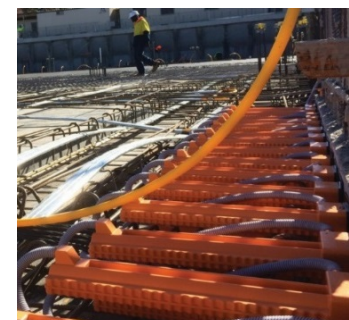
Keepit Dam – NSW



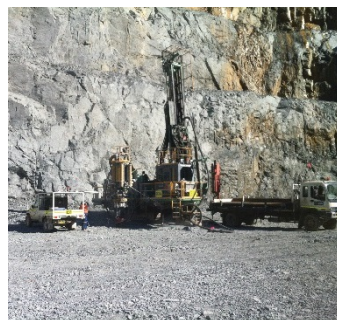
Jupiters Tower – PT



Palais Theatre



SureLok™



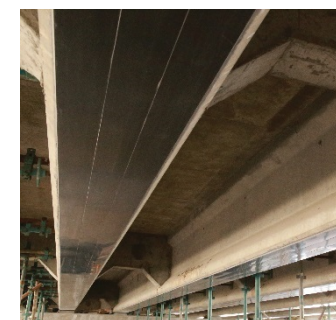
RC Drilling



Bass Point Silos



Gosford Hospital



Bridge Strengthening



Monitoring - Indonesia

OUR PROJECT EXPERIENCE



Slope Stabilisation



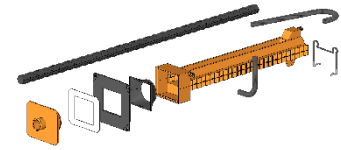
Cable Stay Bridges



Sydney Metro Northwest



Precision Grouting



Product Development



Rope Access



Hazelmere Dam SA



Onslow Water Tanks



Bermagui Jetty



Manufacturing Facility



Crusher Pocket Zambia



Qatar Viaduct



Ruwais LPG Tank



Facade Refurbishment



Concrete Canvas

WE SOLVE THE COMPLEX PROBLEMS THAT OTHERS CAN'T

LEARN MORE ABOUT THE PROJECTS WE'VE
BEEN INVOLVED IN ONLINE.

SRGLIMITED.COM.AU