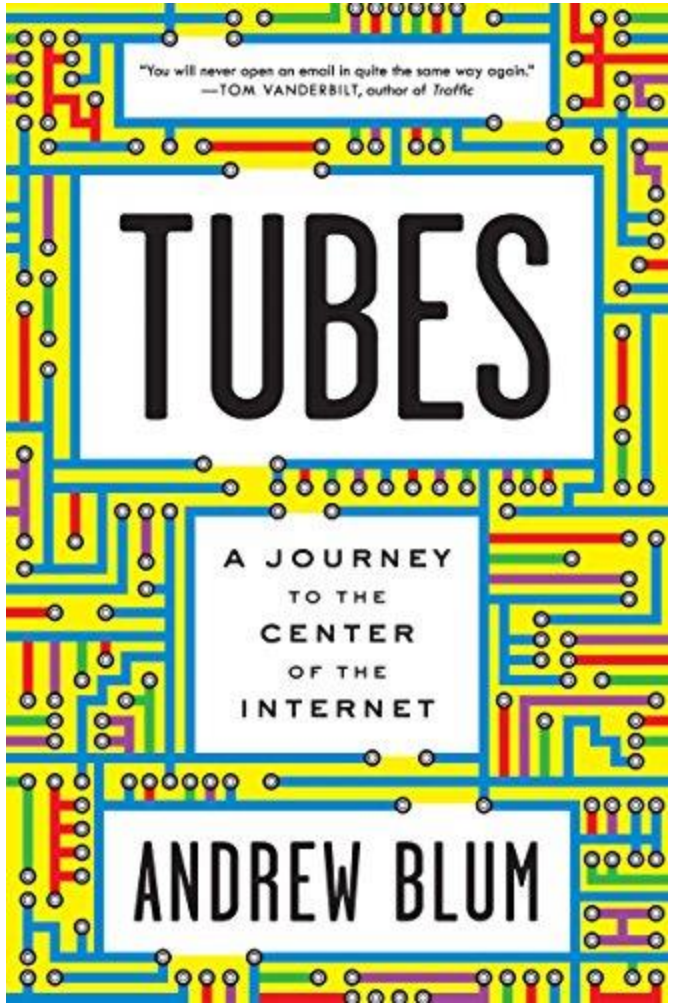




SIMON COOPER
CHIEF OPERATING OFFICER

The book cover features a vibrant, dense pattern of colorful lines (yellow, blue, red, green, purple) and small black dots, resembling a complex circuit board or a map of data connections. The text is arranged in three main horizontal sections within white rectangular frames.

"You will never open an email in quite the same way again."
—TOM VANDERBILT, author of *Traffic*

TUBES

A JOURNEY
TO THE
CENTER
OF THE
INTERNET

ANDREW BLUM



THE ROAD TO AUTONOMOUS FAULT TOLERANT DATA CENTRES

The image features a hand pointing towards a central, glowing gear icon. This central icon is part of a larger network of smaller, semi-transparent icons connected by thin white lines. The icons include a smartphone, a person silhouette, a document with a checkmark, a document with a pencil, a document with a checklist, and a gear. The background is a blurred blue and white, suggesting a professional or technological setting.

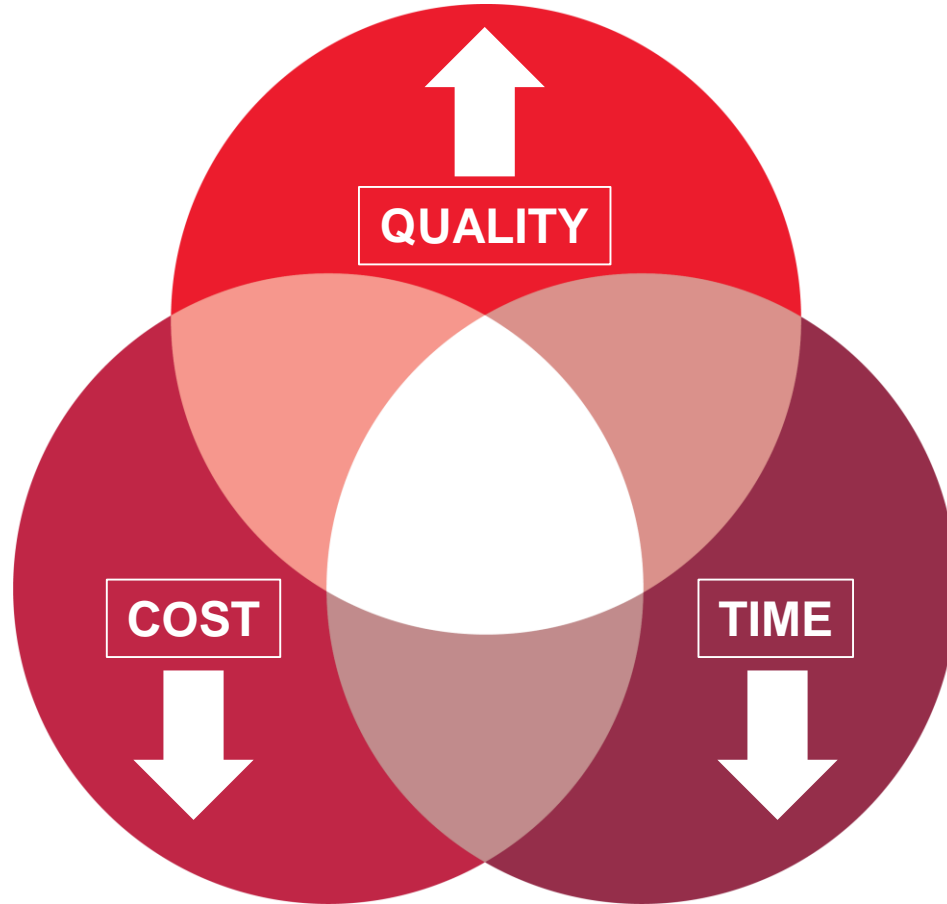
**RELIABILITY DRIVES
CUSTOMER SATISFACTION**

A person wearing a white hard hat and a high-visibility yellow vest is walking down a long, brightly lit aisle in a server room. The aisle is flanked by tall, blue server racks on both sides. The floor is made of white and grey tiles. The perspective is looking down the aisle, creating a sense of depth. The text "SOLUTION FLEXIBILITY" is overlaid in white at the bottom of the image.

SOLUTION FLEXIBILITY

A photograph of two men in a server room. They are standing in a long aisle between rows of red server racks. The man in the foreground is wearing a black jacket and holding a red folder, looking down at it. The man behind him is also looking at the folder. The room is brightly lit with overhead lights, and the racks extend into the distance.

CONTINUOUS DEVELOPMENT METHODOLOGY



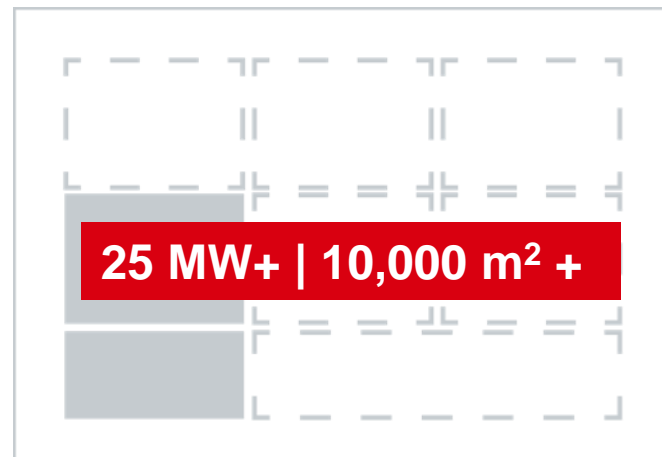
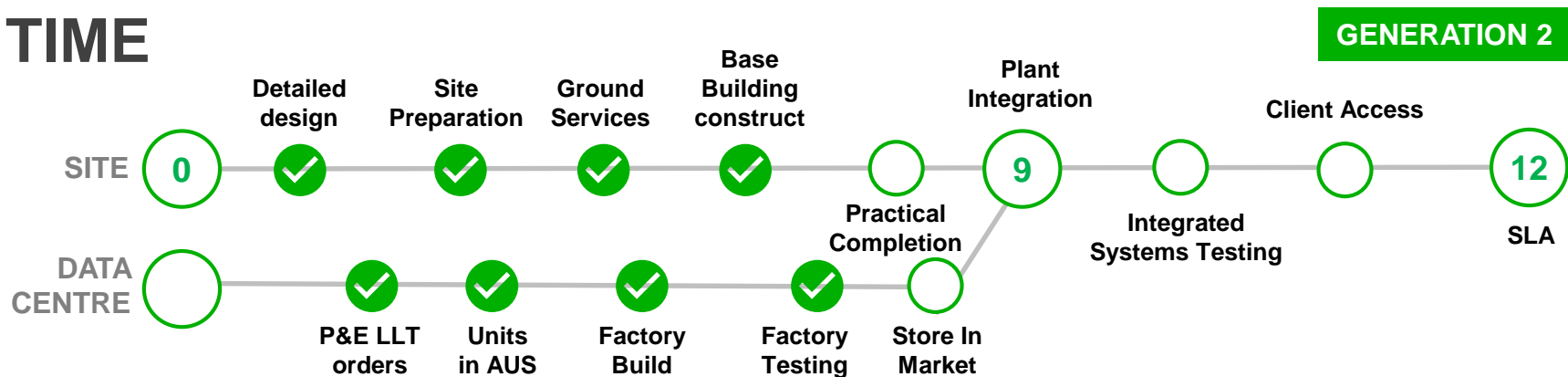
TIME

GENERATION 1



15 MW | 6,200 m²

TIME



M2 UPDATE

Practical Completion
end of Q4FY17



NEXTDC

DAY 1 INVENTORY

1 x Data Hall = 750m² [2.0 MW+]

M2 UPDATE



Critical Plant
Status



Data Hall



B2 UPDATE

Practical Completion
end of Q4FY17

DAY 1 INVENTORY

1 x Data Hall = 1,000m² [1.5MW+]

B2 UPDATE



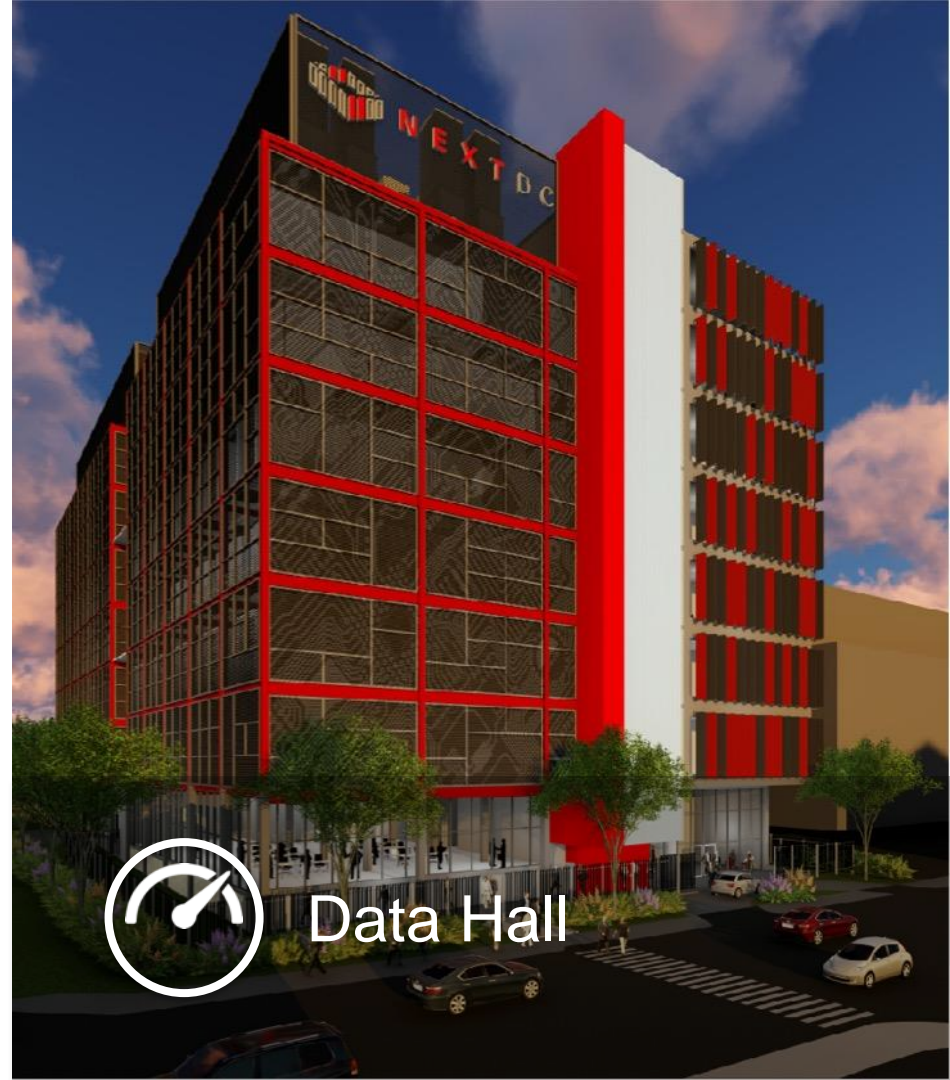
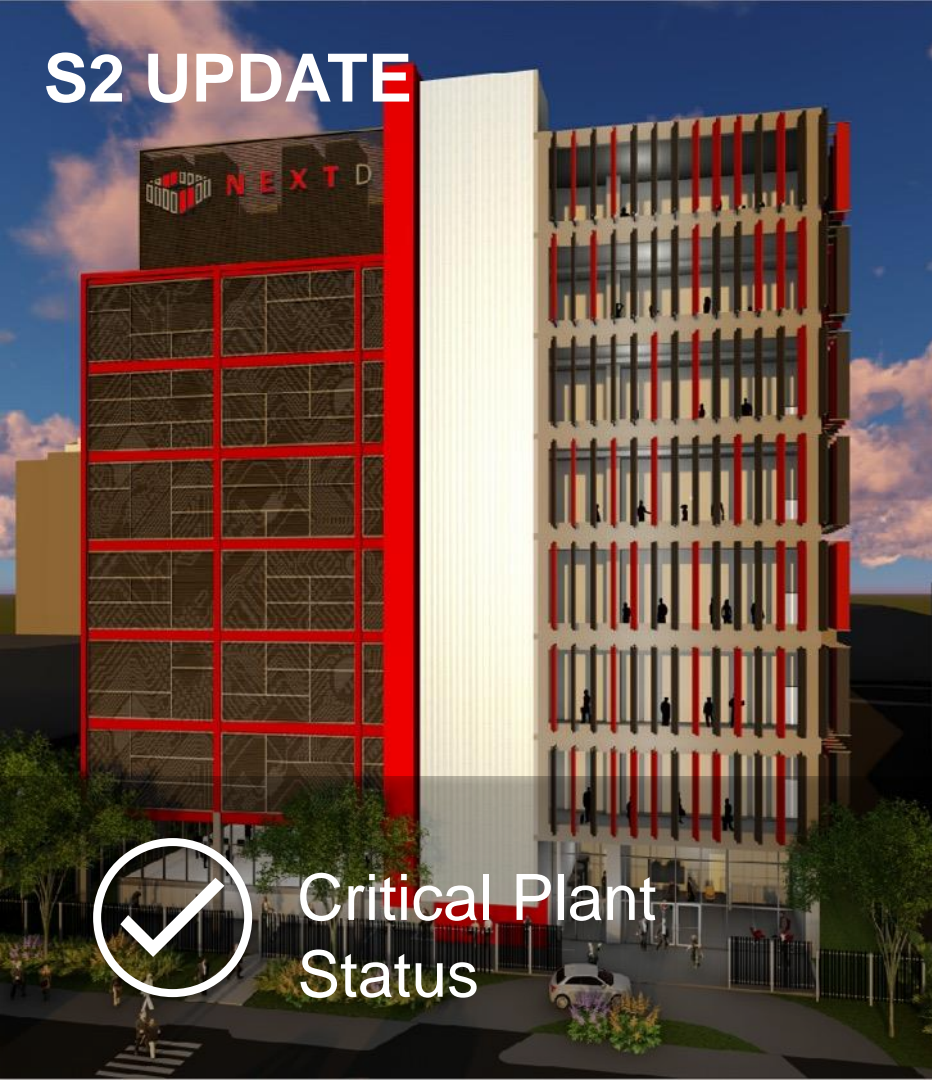
**Critical Plant
Status**

B2 UPDATE



Data Hall

S2 UPDATE



QUALITY

Customer
SLA
100%
availability
agreement

UPTIME INSTITUTE – Design | Facility



Tier III Concurrent Maintainability

ISO9001



Quality
ISO 9001



ISO14001



Environment
ISO 14001



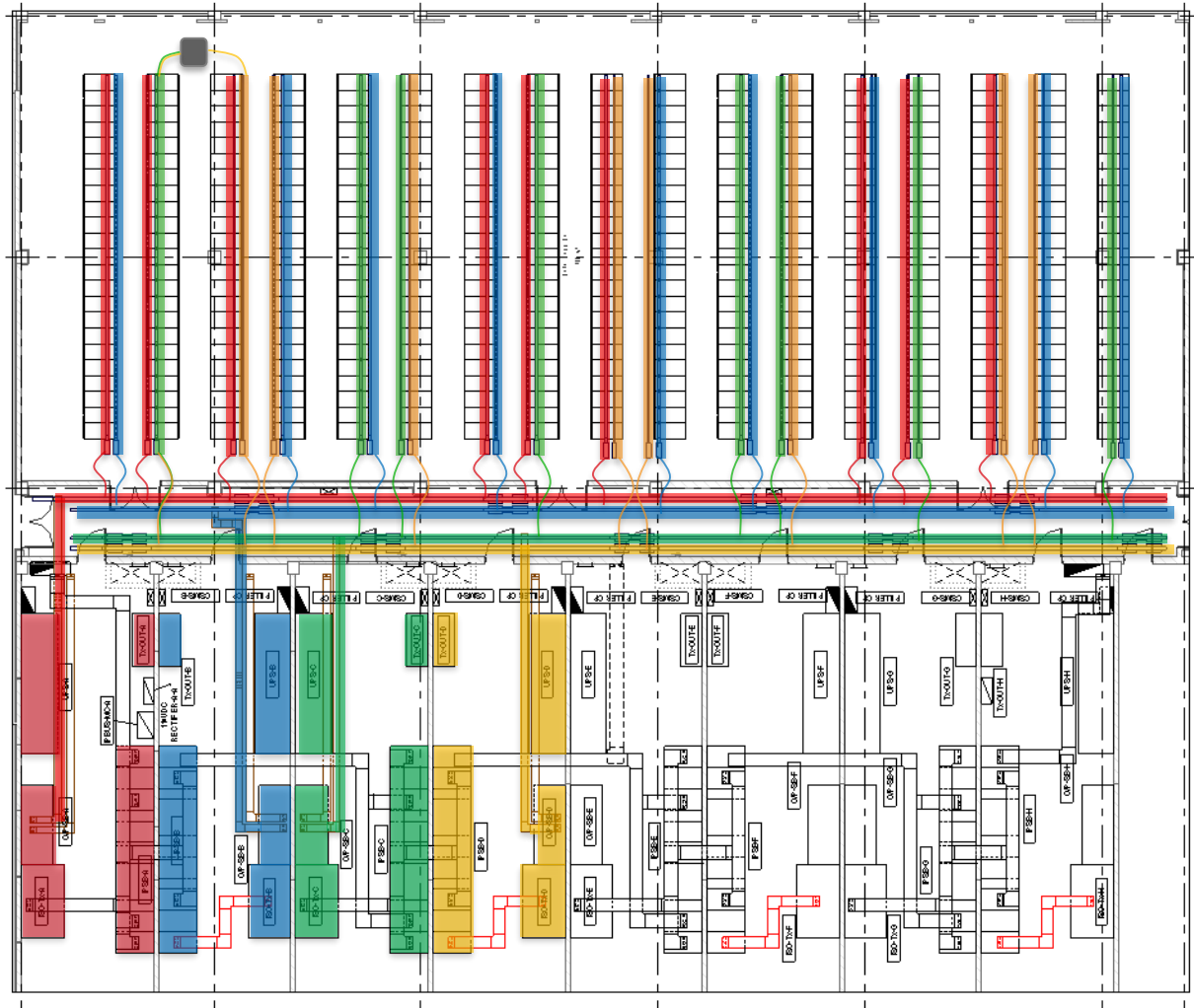
ISO27001



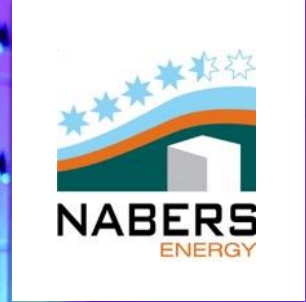
Information
Security
ISO 27001



CHANGING SUPPLY TO ENABLE C ISOLATION



QUALITY CONTINUOUS IMPROVEMENT EFFICIENCY



Generation 1

Target PUE 1.35 or better

NABERS Equivalent: 4.5 STAR

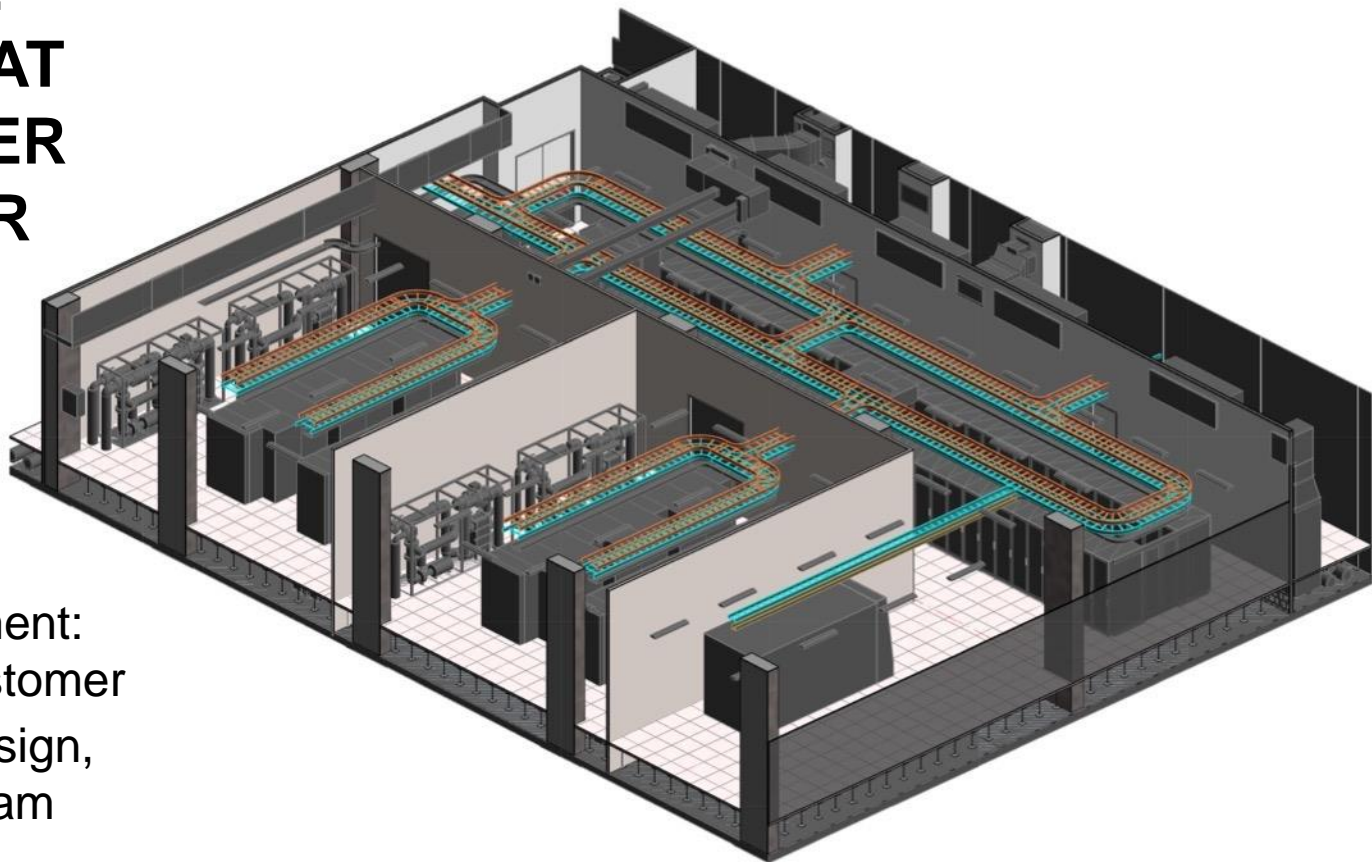
Generation 2

1.29 or better

5 STAR

Generation 2: best day PUE ~1.1

CASE STUDY: DELIVERING AT SPEED, LOWER COST, HIGHER RELIABILITY



- Unique requirement:
2MW+ scale customer
- Generation 1 design,
plus in-house team

OLD WORLD

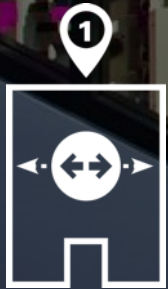


NEW WORLD



QUALITY – CONNECTIVITY

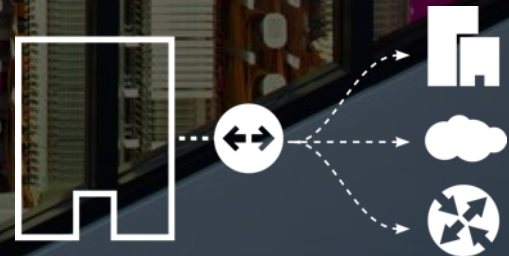
Connecting
within the Data
Centre



Connecting
between the Data
Centre

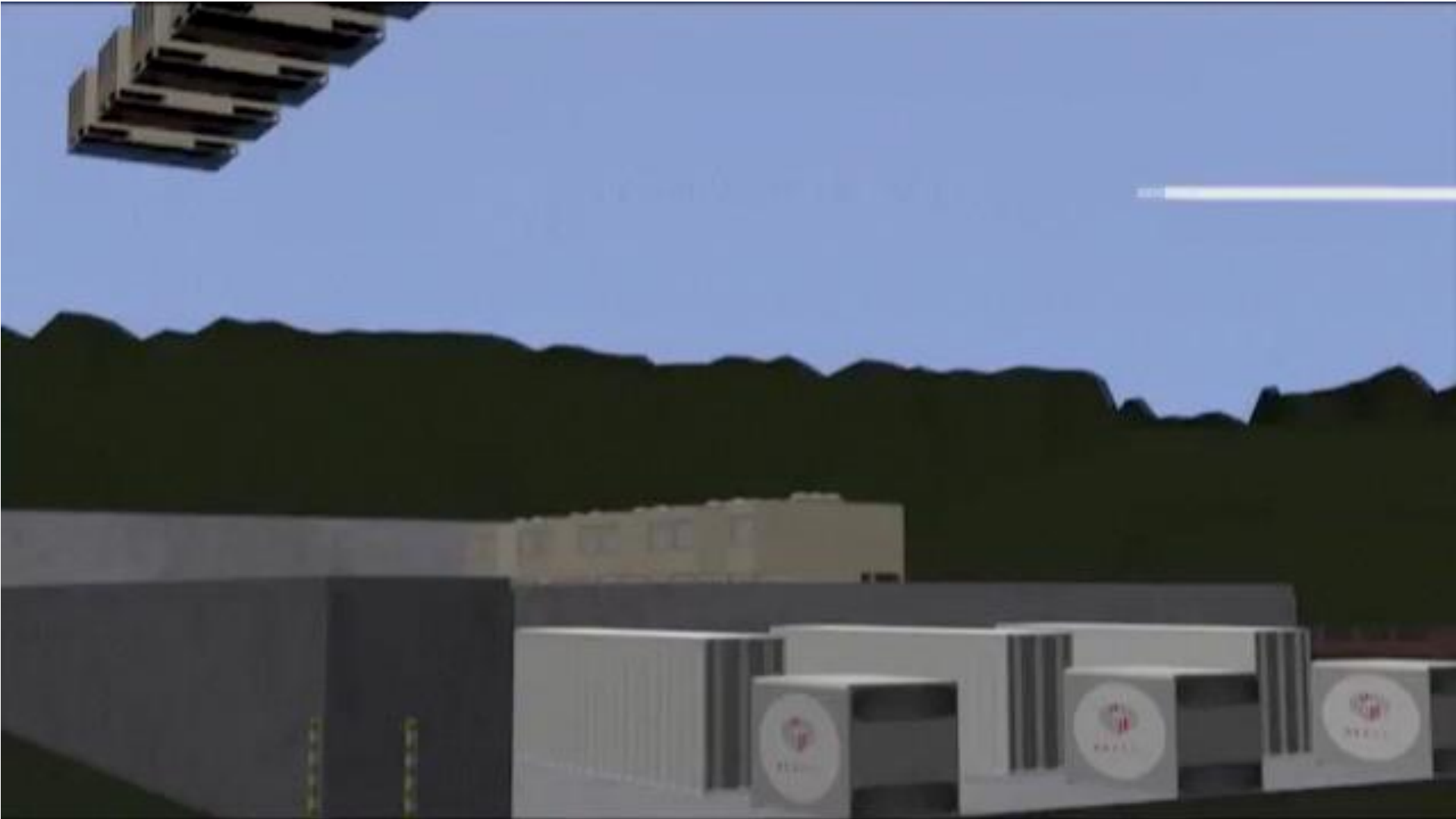


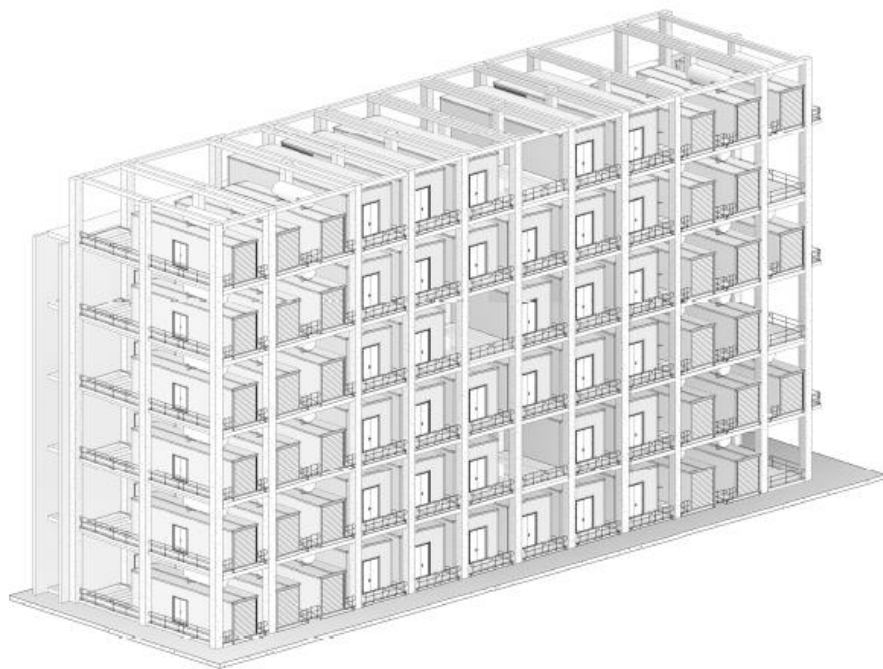
Connected to
Business – Fibre
and Carriers

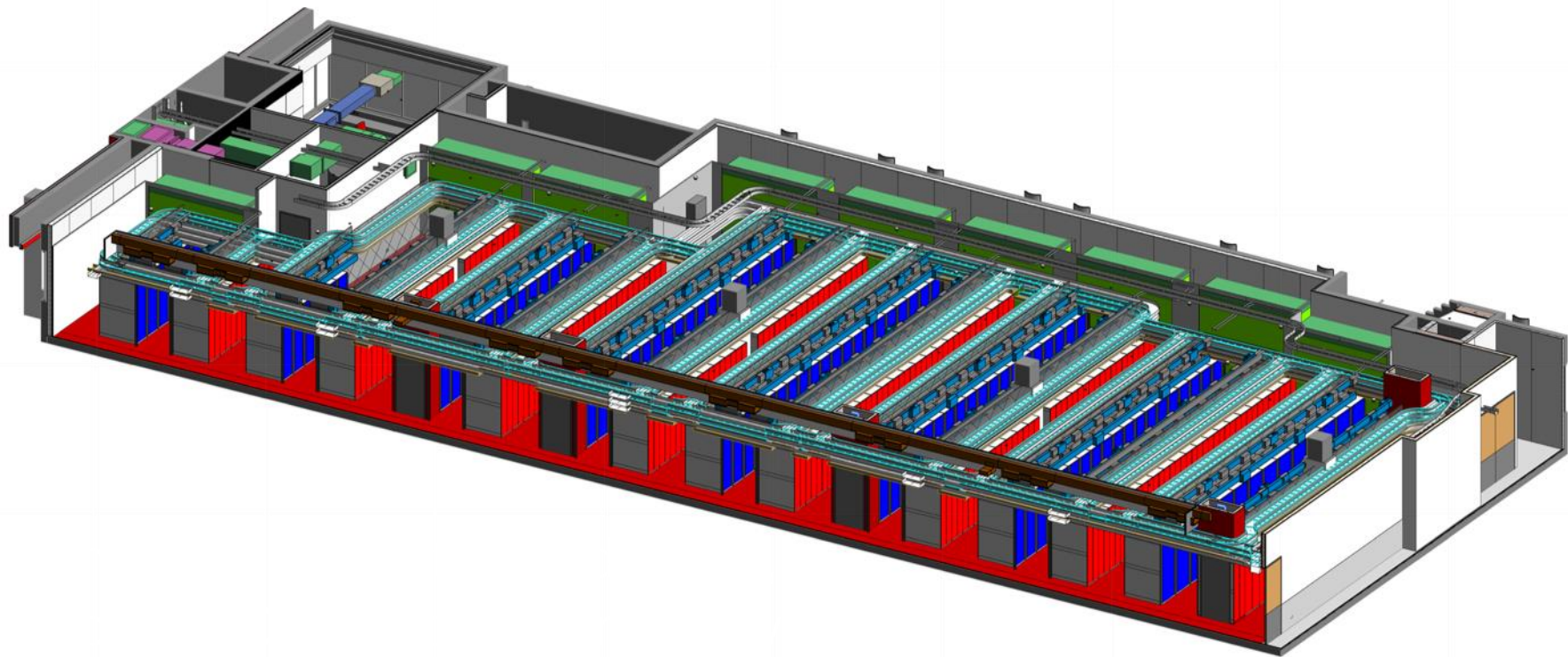




COST EFFICIENCY










PILLER
Power Systems
www.piller.com



STRATEGIC RELATIONSHIPS | INNOVATION | FLEXIBILITY

A photograph of a server room aisle. On both sides are rows of server racks filled with equipment. A dense and organized network of black and grey cables is visible, bundled together and running vertically and horizontally. A person wearing a light-colored short-sleeved shirt, blue trousers, and brown shoes stands in the center of the aisle, looking down at a tablet or clipboard. The floor is a light-colored metal grating. The ceiling has a series of long, rectangular light fixtures. The overall scene conveys a sense of a large-scale, well-maintained data center.

Hyperscalers drive
efficiency gains

INNOVATION





FUTURE: NEAR AND FAR

- Longer term opportunities and challenges
- What will data centres look like in 20 years?

The background is a dark, abstract composition. It features several jellyfish-like structures with fine, white, grid-like patterns on their bells. These are set against a backdrop of vibrant, out-of-focus light spots in shades of blue, orange, and yellow, creating a bokeh effect. The overall aesthetic is futuristic and ethereal.

FUTURE: NEAR AND FAR

- Time, Cost, Quality
- Focused capable trusted
- Deep partner relationships
- Innovate