

## At-the-Market (ATM) Raise

Heavy Minerals Limited (ASX: HVV) (**Heavy Minerals, HVV or the Company**) is pleased to announce that it has utilised its At-the-Market Subscription Agreement (**ATM**) with Acuity Capital (see announcements on 8 August 2024, 21 March 2025 and 24 June 2025) to raise \$200,000 (inclusive of costs) through the set-off of 650,000 Heavy Minerals collateral shares previously issued to Acuity Capital under the ATM (**Set-off Shares**).

The Set-off Shares reduce the 2,590,000 Heavy Minerals collateral shares that Acuity Capital is otherwise required to return to the Company upon termination or maturity of the ATM.

The Set-off Shares have a deemed price of \$0.31 per share, being a 6.9% discount to the 15 trading day VWAP of \$0.333 to 24 July 2025 (inclusive).

The funds raised will be put towards working capital.

This announcement has been authorised by the Board of Directors of the Company.

**Ends**

**For further information, please contact:**

### Heavy Minerals Limited

Adam Schofield  
Executive Chairman  
Ph: +61 (08) 9481 0389  
E: [info@heavyminerals.com](mailto:info@heavyminerals.com)

### Media & Investor Enquiries

Peter Taylor, NWR Communications Ph: +61 (0) 412 036 231  
E: [Peter@nwrcommunications.com.au](mailto:Peter@nwrcommunications.com.au)



## About Heavy Minerals Limited

Heavy Minerals Limited (ASX: HVY) is an Australian listed industrial mineral exploration company.

The Company's projects are prospective for industrial minerals including but not limited to Garnet, Zircon, Rutile and Ilmenite. The Company's initial focus is the Port Gregory and Red Hill Garnet Projects in Western Australia with the Port Gregory project having a JORC (2012) Measured, Indicated and Inferred Mineral Resource of 166 million tonnes @ 4.0% Total Heavy Minerals. This comprises a Measured Mineral Resource of 126 Mt @ 3.8% THM; an Indicated Mineral Resource of 20 Mt @ 6.5% THM; and an Inferred Mineral Resource of 20 Mt @ 2.9% THM. This includes 5.9 million tonnes of contained Garnet and 260 thousand tonnes of ilmenite<sup>1</sup>.

An Exploration Target has been defined for Red Hill using cut-off grades for reporting of 3% THM and 1% THM and ranging from 90 to 150 Mt of material @ 5.4% to 4.1% THM. The Exploration Target also contains between 5 and 6 Mt of THM and 3.8 and 4.5 Mt of garnet<sup>2</sup>. The potential quality and grade of the Exploration Target is conceptual in nature and there has been insufficient exploration activity to determine a Mineral Resource estimate and it is uncertain if further exploration will result in the estimation of a Mineral Resource.

The Company's other project is the Inhambane Heavy Mineral Project in Mozambique which contains an ilmenite dominated JORC (2012) Inferred Mineral Resource of 90 million tonnes @ 3.0% Total Heavy Mineral<sup>3</sup>.

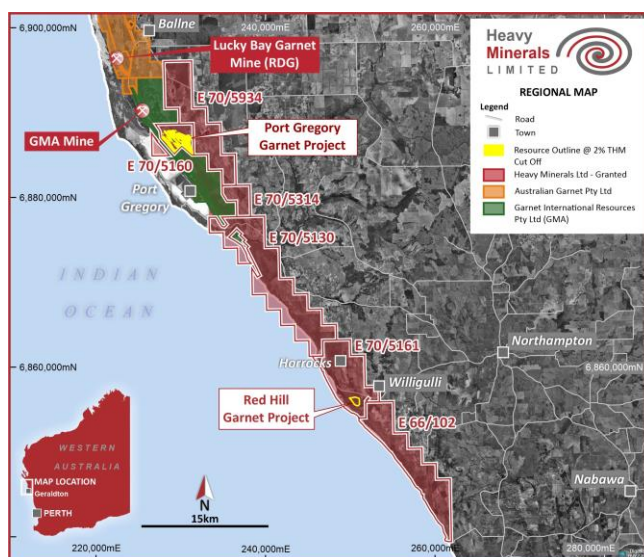
The Company confirms that it is not aware of any new information or data that materially affects the information included in this announcement and that all material assumptions and technical parameters underpinning the JORC estimates continue to apply and have not materially changed.

To learn more please visit: [www.heavyminerals.com](http://www.heavyminerals.com)

<sup>1</sup> [https://cdn-api.markitdigital.com/apiman-gateway/ASX/asx-research/1.0/file/2924-02685080-6A1157738?access\\_token=83ff96335c2d45a094df02a206a39ff4](https://cdn-api.markitdigital.com/apiman-gateway/ASX/asx-research/1.0/file/2924-02685080-6A1157738?access_token=83ff96335c2d45a094df02a206a39ff4)

<sup>2</sup> [https://cdn-api.markitdigital.com/apiman-gateway/ASX/asx-research/1.0/file/2924-02661758-6A1148442?access\\_token=83ff96335c2d45a094df02a206a39ff4](https://cdn-api.markitdigital.com/apiman-gateway/ASX/asx-research/1.0/file/2924-02661758-6A1148442?access_token=83ff96335c2d45a094df02a206a39ff4)

<sup>3</sup> [https://cdn-api.markitdigital.com/apiman-gateway/ASX/asx-research/1.0/file/2924-02462745-6A1067130?access\\_token=83ff96335c2d45a094df02a206a39ff4](https://cdn-api.markitdigital.com/apiman-gateway/ASX/asx-research/1.0/file/2924-02462745-6A1067130?access_token=83ff96335c2d45a094df02a206a39ff4)



Project Locations - Port Gregory and Red Hill