

Discovering Gold and Copper in NSW

Investor Presentation
November 2024

Dan Power
Managing Director

ASX: KNB



Disclaimer

General information only

This presentation contains general background information and summary information about Koonenberry Gold Limited (ACN 619 137 576) ("**Koonenberry**") and its activities as at the date of this presentation. None of the members of Koonenberry or their or Koonenberry's respective advisors, affiliates, related bodies corporate, directors, officers, partners, consultants, employees and agents ("Other Persons") have authorised, permitted or caused the issue, submission, dispatch or provision of this presentation and none of them makes or purports to make any statement in this presentation. To the maximum extent permitted by law, Koonenberry and the Other Persons expressly exclude and disclaim all liability, including without limitation for fault or negligence on the part of any person, or for any expenses, losses, damages or costs incurred as a result of the use of this presentation or its contents and the information in this presentation being inaccurate or incomplete in any way for any reasons, whether by negligence or otherwise.

To the maximum extent permitted by law, each of Koonenberry and the Other Persons make no representation or warranty, express or implied, as to the currency, accuracy, reliability or completeness of all or any part of all or any part of this document, or any constituent or associated presentation, information or material, or the accuracy, likelihood of achievement or reasonableness of any forecasts, prospects of returns contained in or implied by, the information in this presentation or any part of it. Except as required by applicable law or regulation, neither Koonenberry nor the Other Persons have any obligation to provide any additional or updated information, whether as a result of new information, future events or results or otherwise.

Forward looking statements

These materials include forward looking statements. Often, but not always, forward looking statements can be identified by the use of forward looking words such as "may", "will", "expect" "intend", "plan", "estimate", "anticipate", "continue", "outlook" and "guidance" or other similar words and may include, without limitation, statements regarding plans, strategies and objectives of management, anticipated production or construction commencement dates and expected costs or production outputs.

Forward looking statements are based on Koonenberry and its Management's good faith assumptions relating to the financial, market, regulatory and other relevant environments that will exist and affect Koonenberry's business and operations in future. Koonenberry does not give any assurance that the assumptions on which forward looking statements are based will prove to be correct, or that Koonenberry's business or operations will not be affected in any material manner by these or other factors not foreseen or foreseeable by Koonenberry or Management or beyond Koonenberry's control. Although Koonenberry attempts and has attempted to identify factors that would cause actual actions, events or results to differ materially from those disclosed in forward looking statements, there may be other factors that could cause actual results, performance, achievements or events not to be as anticipated, estimated or intended, and many events are beyond the reasonable control of Koonenberry. Accordingly, readers are cautioned not to place undue reliance on forward looking statements. Forward looking statements in these materials speak only at the date of issue. Subject to any continuing obligations under applicable law in providing this information Koonenberry does not undertake any obligation to publicly update or revise any of the forward looking statements or to advise of any changes in events, conditions or circumstances on which any such statement is based.

Cautionary statement on visual estimates of mineralisation

Any references in this announcement to visual results are from visual estimates by qualified geologists. Laboratory assays are required for representative estimates of quantifiable elemental values. Visual estimates of mineral abundance should never be considered a proxy or substitute for laboratory analyses where concentrations or grades are the factor of principal economic interest. Visual estimates also potentially provide no information regarding impurities or deleterious physical properties relevant to valuations.

Proximate resources and statements

This announcement may contain references to other parties either nearby or proximate to Koonenberry Gold's projects and/or references that may have topographical or geological similarities to Koonenberry Gold's projects. It is important to note that such exploration results, discoveries or geological similarities do not in any way guarantee that the Company will have any exploration success at all, or in delineating a Mineral Resource on any of Koonenberry Gold's Projects.

Competent Persons Statement

The information in this presentation that relates to previous Exploration Results was reported in accordance with the JORC Code and ASX Listing Rules in the Company's ASX announcements set out in the slide labelled "References".

The Company confirms that it is not aware of any new information or data that materially affects the information included in the relevant market announcements and, in the case of estimate of Mineral Resources, that all material assumptions and technical parameters underpinning the estimate in the relevant market announcement continue to apply and have not materially changed. The Company confirms that the information and context in which the Competent Person's findings are presented have not been materially modified from the original market announcements.

No new exploration results are reported in this presentation.

This announcement has been approved for release by the Board of Koonenberry Gold Ltd.

Koonenberry Gold's exciting portfolio of highly prospective gold and copper-gold exploration projects in NSW

Transformational acquisition » Discovery hole already drilled

Enmore Gold Project

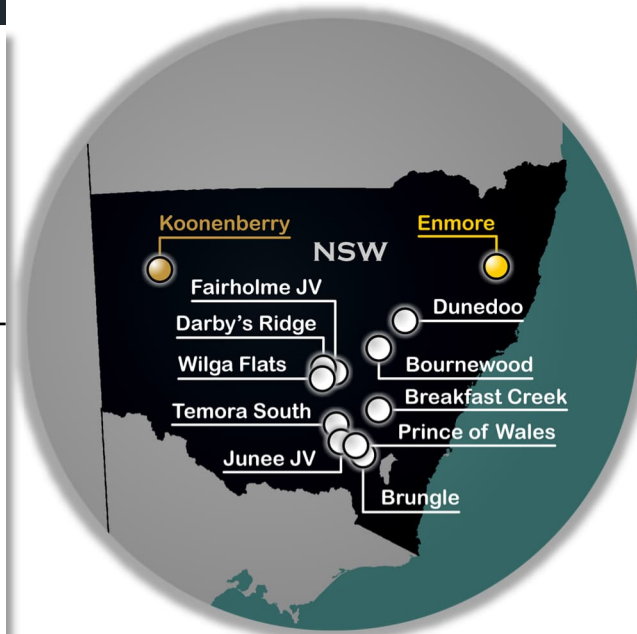
- 20km south of 1.7Moz Hillgrove Au-Sb Mine; similar geology & prospectivity
- Advanced gold Project with significant drill intercepts:
 - **174m @ 1.82g/t Au from 0m, inc. 31m @ 3.05g/t Au from 115m** (OSSRC006)
 - **0.45m @ 234g/t Au; 3.0m @ 15g/t Au** from historic underground workings
- Opportunity to **rapidly advance multiple high-grade drill targets**

Lachlan Project - Au and Cu-Au

- **1,580km² in Lachlan Fold Belt**, Australia's premier porphyry Cu-Au district
- **10 Projects** generated over a 6-year period; significant exploration conducted
- Good mix of epithermal Au, porphyry Cu-Au and **high-grade Cu-Au** skarn targets
- **Two active JVs with Newmont** (Junee 20% free carried & Fairholme 51%)
- Combined with existing Koonenberry's Project (2,060km²) = **4,192km²** ground holding; **one of the most significant exploration portfolios in NSW**

Leveraged for Exploration Success

- Team with track record of discovery, extensive knowledge & contacts
- Well funded following \$4.5M capital raise

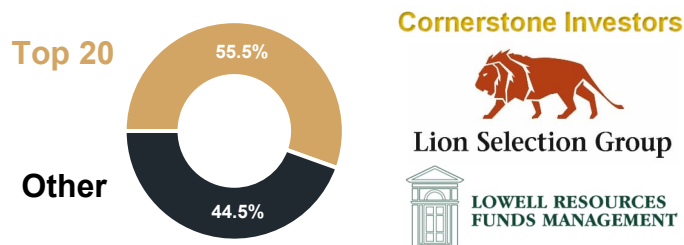


Corporate Overview

Highly leveraged to exploration success

Pro-Forma Capital Structure	ASX: KNB
Current shares on issue*	287.8M*
Shares on issue at completion of acquisitions and capital raising	867.8M
Share price (26 Nov 24)	\$0.015
Market capitalisation (post completion at \$0.015 per share)	\$13.1M
Cash**	\$5.0M
Debt	-
Enterprise value	\$8.1M

Board and Management hold ~9% of the shares on issue and the Top 20 hold ~55.5%



Board and Management	Experienced Team – Focused on Discovery
 Paul Harris (BCom, M.MinEng, GAICD) Chairman and Non-Executive Director	<ul style="list-style-type: none"> Experienced professional with +25 years in finance and investment banking including Citibank (Head of Metals and Mining), Bankers Trust and Merrill Lynch Currently Non-Exec Chair of Highfield Resources and Exec Chair of Aeon Metals
 Dan Power (BSc Hons, MSc Econ. Geol, MAICD, AIG, SEG) Managing Director	<ul style="list-style-type: none"> Geologist with +25 years' experience in exploration, project generation, evaluation and management in Australia, China, SE Asia, SW Pacific and Mongolia Former Newmont Country Manager and CEO of Tiline Mongolia
 Anthony McIntosh (BCom, GAICD) Non-Executive Director	<ul style="list-style-type: none"> Extensive experience in investment marketing, investor relations and strategy Non-Executive Director of ASX-listed: Strategic Energy Resources as well as several unlisted and not-for-profit organisations
 George Rogers (BIB) Non-Executive Director	<ul style="list-style-type: none"> Extensive experience in capital and commodity markets, investor relations and strategic planning as well as corporate strategy and M&A Formerly Managing Director of KNB. Co-founder and Director of SRG Partners
 Darren Glover (BSc Hons, AusIMM) Non-Executive Director (proposed)	<ul style="list-style-type: none"> Geologist with +25 years' experience in minerals exploration, mining, resource definition and business development across Australia and Sth America Co-Founder of Gilmore Metals. Previous senior roles with Gold Fields, Newcrest, RGC. Led geological team to discovery of Dargues Reef Gold Mine (NSW)
 Paul Wittwer (BSc Hons, AIG, AusIMM SEG) Exploration Manager	<ul style="list-style-type: none"> Geologist with +20 years' Australian and international experience in orogenic and epithermal gold systems as well as in silver and copper Formerly Thor Mining and Southern Gold Exploration Manager covering greenfields, near mine exploration, mine geology, resource modelling and development
 Bryn Ellingworth (BSc Hons, MSc Econ. Geol*, AusIMM, SEG) Principal Geologist	<ul style="list-style-type: none"> Geologist with 10 years' experience in mineral exploration and resource definition across various commodities and deposit styles including precious and base metals Strong background in NSW mineral systems with demonstrated success in the Lachlan Fold Belt and New England Fold Belt, NSW
 Ben Harper (BSc Hons (Econ. Geol)) Consultant Geologist	<ul style="list-style-type: none"> Geologist with 20+ years' experience as a field focussed exploration geoscientist. Track record of discoveries including definition of the Cadia deposits and Goswong Co-Founder of Gilmore Metals. Previous senior technical roles with Newcrest Mining and Gold Fields

*Other securities on issue comprise 94 million options (KNBO) on issue (exercisable @ 4 cents by April 2026) and 10.6 million performance rights, exercisable on various milestones.

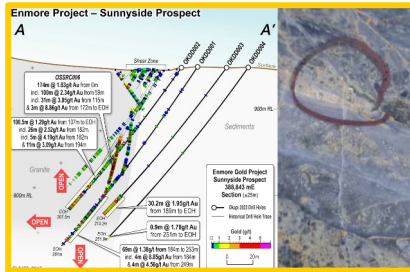
**Comprises capital to be raised of \$4.1M (after costs) + cash at 30/09/2024. Management shares and Top 20 chart is pre-acquisition/placement

Expanded Project Portfolio

Discovering Gold and Copper in NSW

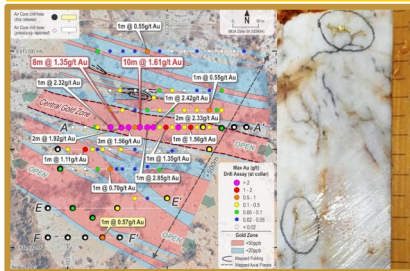
Enmore Project » Broad + High-Grade Au

- 20km Sth of +1.7Moz Au Hillgrove Mine ⁽¹⁾
 - **174m @ 1.83g/t Au** from 0m (OSSRC006) ⁽²⁾
 - **100.5m @ 1.29g/t Au** from 107m to EOH (OKDD002) ⁽²⁾
 - **0.45m @ 234g/t Au** (u/g channel sample) ⁽²⁾
- Opportunity to **rapidly advance** with drilling



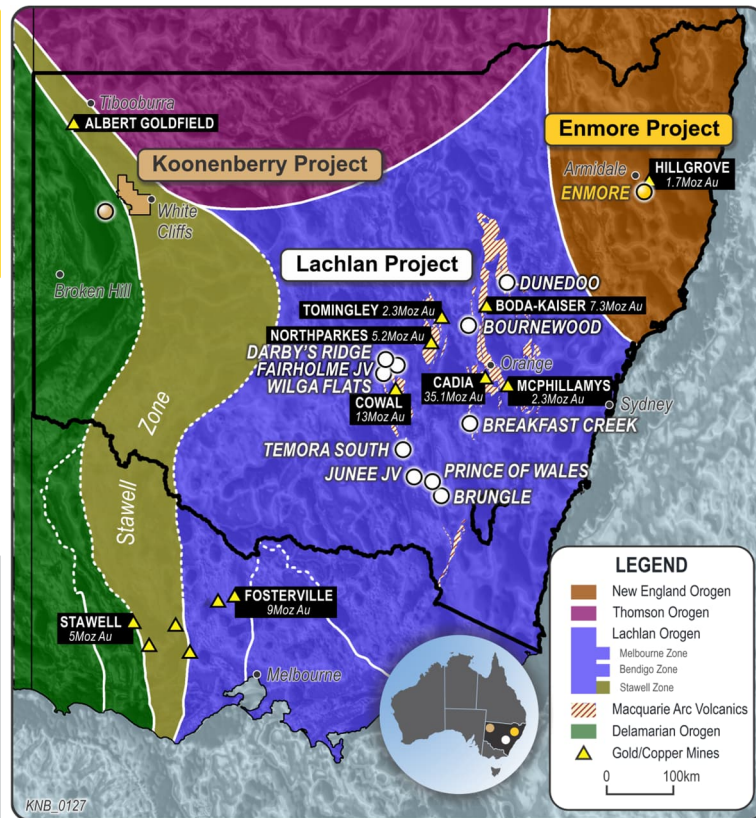
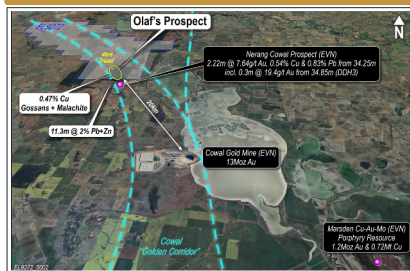
Koonenberry Project » Belt Scale Au + Cu

- **Extension of Western Victorian goldfields**
- Underexplored frontier terrane
- Highly prospective geological setting
- **Multi million ounce gold potential**
- **Pipeline of drill ready Prospects**



Lachlan Project » Combined 1,580km² EL's

- Prolific Au-Cu Belt: 110Moz Au, 19Mt Cu ⁽³⁾
- 10 Individual Project Areas
- **Two Active JVs with Newmont**
- Experienced technical team in place
- **Multiple Au & Cu-Au discovery opportunities**



Enmore Project

Advanced Gold Project » Opportunity to rapidly advance with drilling



Sunnyside Prospect

Enmore Project

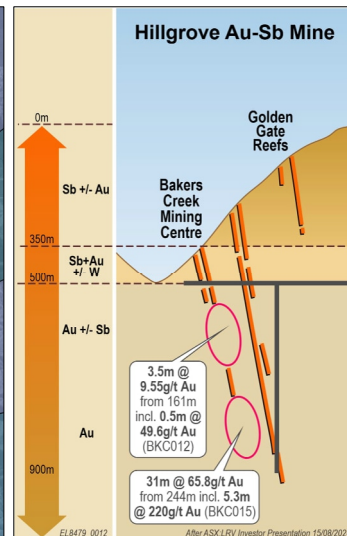
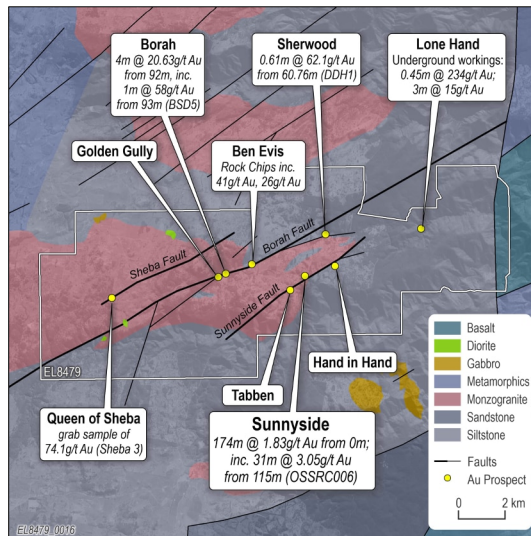
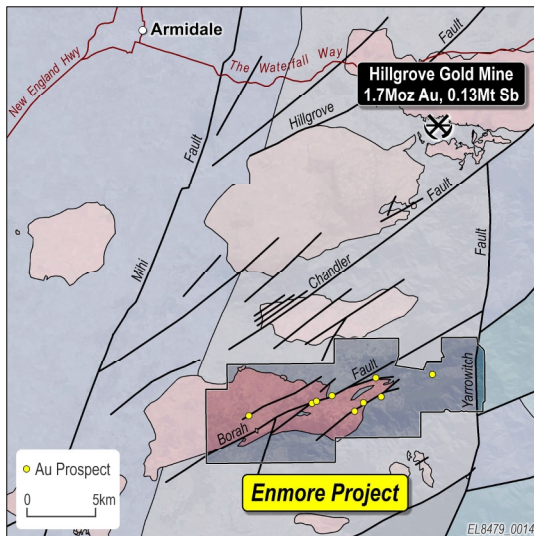
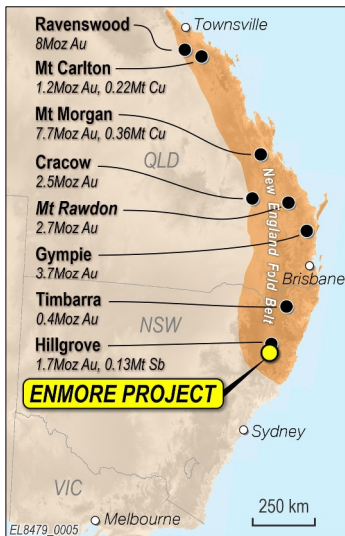
New England Fold Belt » +35M oz Au endowment (1)

Underexplored Belt » Multiple Tier 1 deposits (1)

- Ravenswood (8Moz), Mt Morgan (7.7Moz), Cracow (2.5Moz), Gympie (3.7Moz), Mt Rawdon (2.7Moz), Mt Carlton (1.2Moz)
- **Hillgrove Mine (1.7Moz Au, 0.13Mt Sb) ASX: LRV (2)**
 - Structurally controlled, spatially related to intrusions
 - Sb-Au → Au vertical zonation (e.g. Fosterville, Sunday Creek)
- Newmont (1,582km²) and FMG (567 km²) both active in region
- **Highly prospective & underexplored » Au ±Sb potential**

Enmore Au Project » Opportunity to rapidly advance with drilling

- 134km² EL; 20km south of Hillgrove Au-Sb Mine;
- Widespread high-grade gold occurrences & historic workings
- **Geological similarities inc. fault architecture to Hillgrove:**
 - Structurally controlled, spatially related to intrusions
 - **+30km strike potential** on 3 shear zones
 - **Bulk tonnage and high-grade gold potential**
- **Limited systematic exploration » Most targets not drill tested**



Enmore Project – Sunnyside Prospect

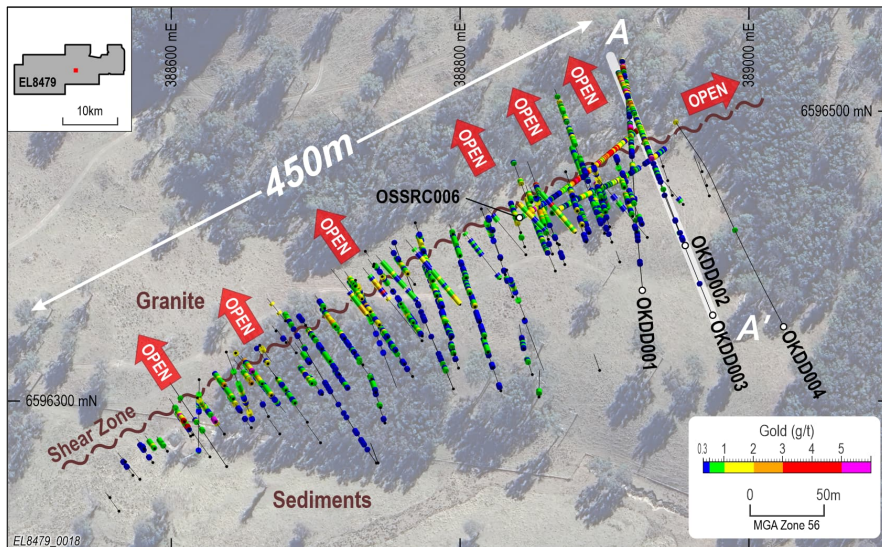
Impressive widths and grades » Opportunity to rapidly advance with drilling

Sunnyside Prospect » Broad gold intercepts along with NW shear zone

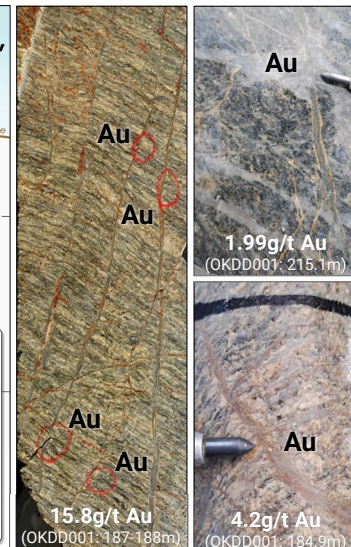
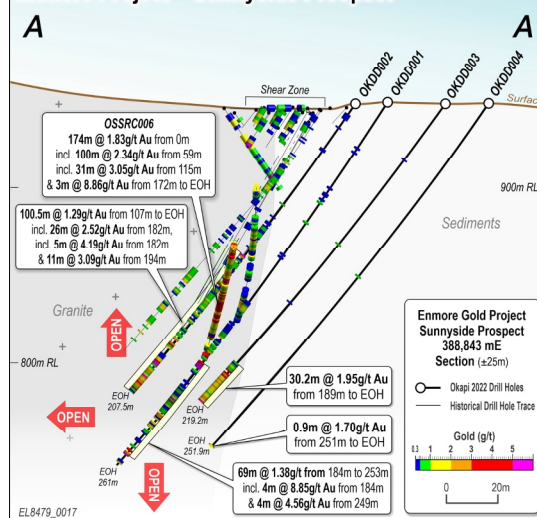
- +450m long shear zone (open) with quartz veins & breccias
- Recent holes ending in mineralisation: ⁽¹⁾
 - 174m @ 1.83g/t Au from 0m**; incl. **31m @ 3.05g/t Au** from 115m & 3m @ 8.86 from 172m **to EOH** (OSSRC006)
 - 69m @ 1.38g/t Au from 184m (OKDD001)
 - 100.5m @ 1.29g/t Au from 107m **to EOH** (OKDD002)
 - 30.2m @ 1.95g/t Au from 189m **to EOH** (OKDD003)

Sunnyside Prospect » High-grade associated with cross-cutting veins

- High-grade intercepts include: ⁽¹⁾
 - 4m @ **11.94g/t Au** from 0m (SP3B)
 - 2m @ **14.6g/t Au** from 46m (SP13E)
 - 4m @ **8.85g/t Au** from 184m (OKDD001)
 - 1m @ **15.15g/t Au** from 172m (OSSRC006)
- Majority of drilling sub-parallel to high-grade veins**
- **High-grade Au open to NW on cross-cutting structures** (cf. Hillgrove)



Enmore Project – Sunnyside Prospect



Enmore Project

District Potential » Multiple walk-up drill targets

Borah Prospect » High-grade gold target ⁽¹⁾

- 2.5km long Au soil anomaly (max 11,000ppb Au)
- Historic high-grade gold intersections:
 - 4m @ **20.63g/t Au** from 92m, inc. 1m @ **58g/t Au** from 93m (BSD5)
 - 6m @ 4.61g/t Au from 65m (BSD1)
 - 4m @ 7.06g/t Au (BA_L2 – U/G face sample)

Sherwood Prospect » Historic workings ⁽¹⁾

- +1km long Au soil anomaly (open to east)
- Limited drilling:
 - 0.61m @ **62.1g/t Au** from 60.76m (DDH1)

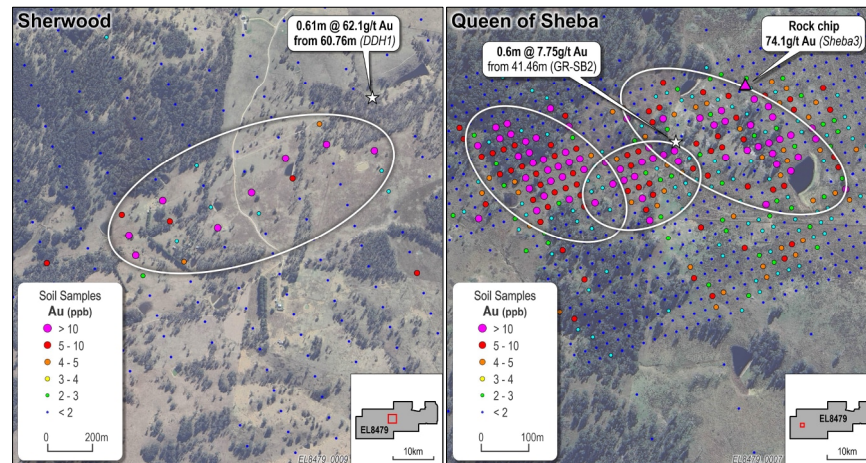
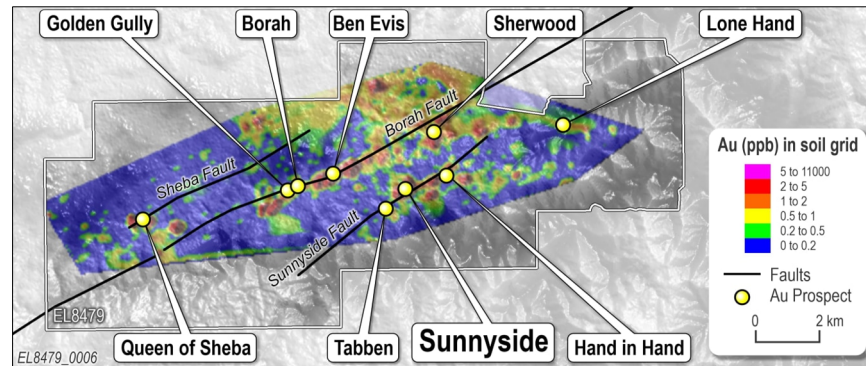
Queen of Sheba Prospect » High-grade gold target ⁽¹⁾

- 900m x 300m Au soil anomaly (max 3,430ppb Au)
- Historic workings grab sample: **74.1g/t Au** (Sheba 3)
- Limited drilling: 0.6m @ **7.75g/t Au** from 41.46m (GR-SB2)

Lone Hand Prospect » Bonanza gold ⁽¹⁾

- Surface sampling: **56g/t Au** and **36g/t Au**
- Underground workings:
 - 0.45m @ 234g/t Au**; **0.91m @ 21g/t Au**; **0.76m @ 23 g/t Au**;
 - 0.45m @ 33g/t Au**; **1.52m @ 16g/t Au**; **3m @ 15g/t Au**

➤ **NNW drive orientation of historical workings at Borah and Lone Hand supports high-grade structural model**



Koonenberry Project

Belt Scale Au +Cu discovery opportunity in frontier terrane



Atlantis Prospect, View to SW

Koonenberry Project

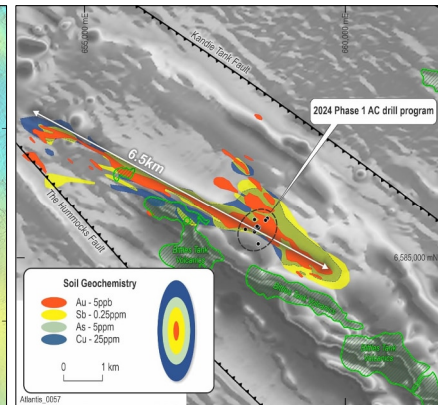
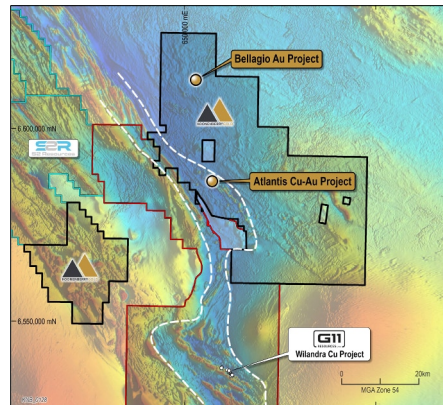
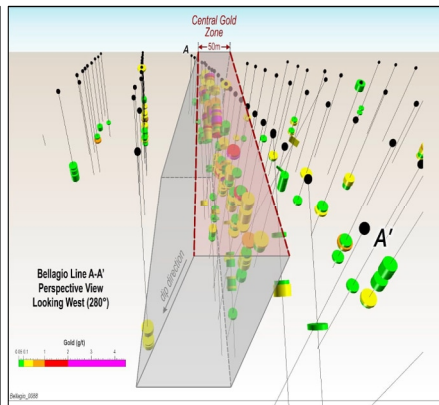
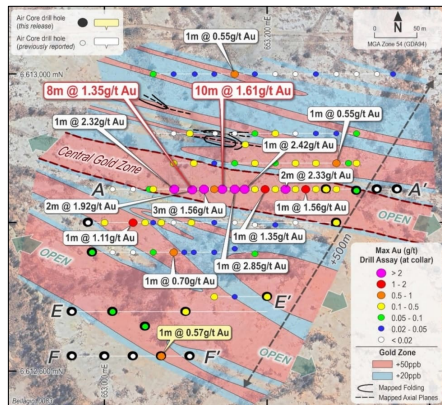
Belt Scale Greenfields Gold + Copper discovery opportunity

Bellagio Au Prospect » 39.4g/t Au outcrop ⁽¹⁾

- Widespread 500 x 300m bedrock gold zone identified in Aircore
- 10m @ 1.61g/t Au from 18m inc. 1m @ 4.47g/t from 24m ⁽²⁾
- 50m wide Central Gold Zone identified and remains undrill tested
- Royal Oak Fault controlling structure open for +20km
- Several high priority gold anomalies identified along fault
- Further drilling planned at Bellagio and Royal Oak Fault

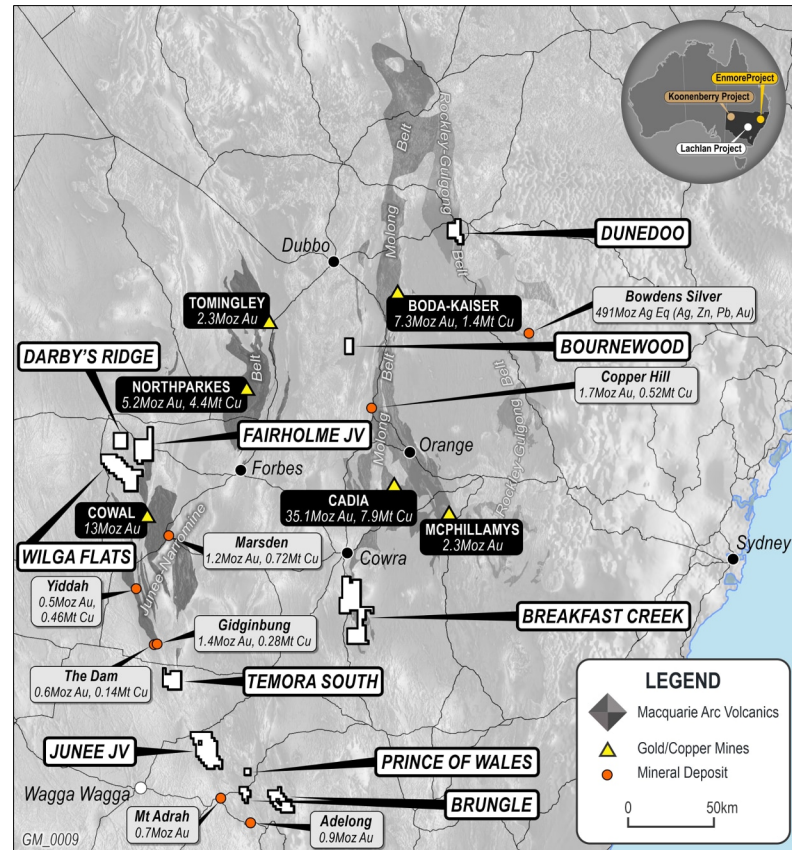
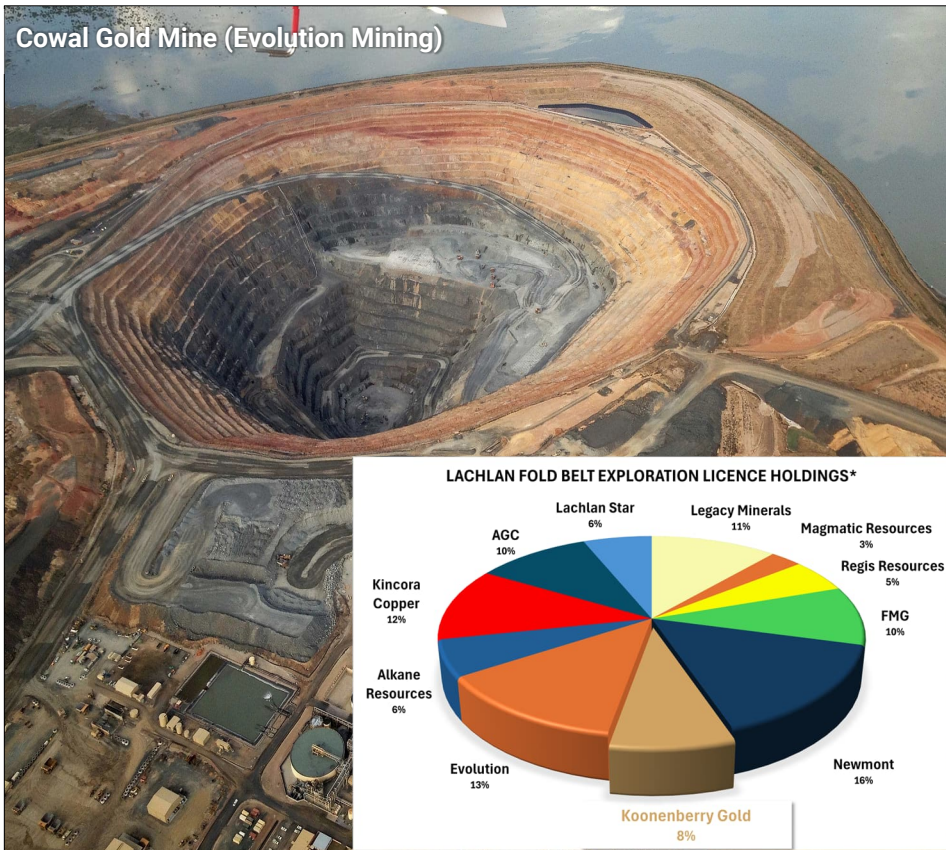
Atlantis Cu-Au Prospect » 15.3% Cu, 0.84g/t Au, 0.34% Pb outcrop ⁽³⁾

- Favourable structural position near mantle tapping KNB Fault
- Doubly-plunging mafic dome, similar to +5Moz Stawell gold mine
- 6.5km x 900m Au-Cu-As-Sb-Pb-Zn soils
- Same stratigraphy as G11. Potential for VMS style mineralisation
- Recent drilling has not explained high grade Cu-Au at surface
- Ground EM geophysics in progress over broader soil anomaly



Lachlan Project

Strategic Holding in Junee & Molong Belts » 110Moz Au, 19Mt Cu Endowment ⁽¹⁾



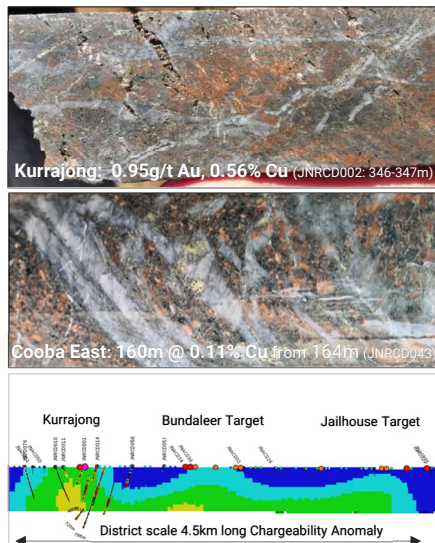
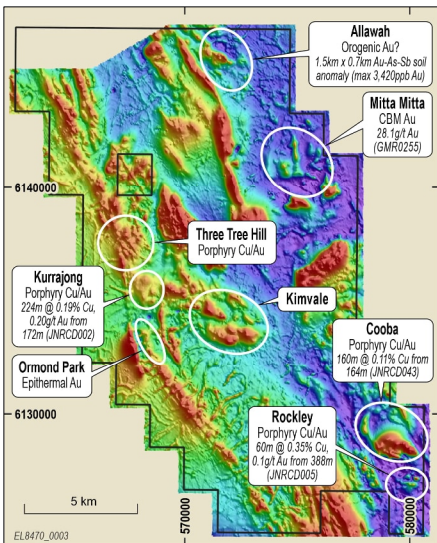
Notes: 1. Future of Minerals in NSW Report, March 2020. NSW Dept. of P, I&E; *Selected Exploration Licence Holders, Minview (Appendix 1)

Lachlan Project

Junee JV Project » Newmont JV (KNB 20% free carried interest)

Junee JV Project » Multiple Porphyry Cu/Au & Epithermal Au Targets

- “Unusually fertile segment of Macquarie Arc – Alan Wilson” ⁽¹⁾
- **Extensive datasets and drilling completed (~\$23.9M)**
- Multiple Targets; 4x alkalic porphyry systems identified
- Causative monzodiorite to monzonite porphyry intrusions
- **Shallow exploration for LFB, with systems exposed at/near surface**
- **Project funded by Newmont with drilling planned**

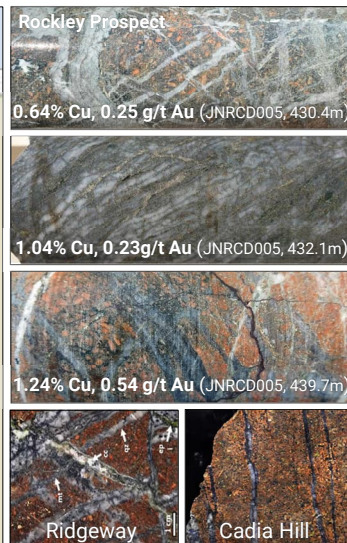
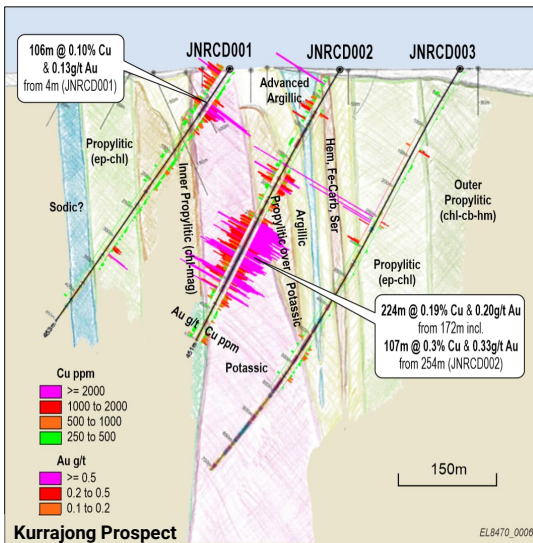


Kurrajong Prospect » Cu-Au porphyry system from surface

- 17 drillholes (8,982m) included intercepts: ⁽²⁾
 - **224m @ 0.19% Cu, 0.20g/t Au from 172m**, inc. 107m @ 0.3% Cu, 0.33g/t Au from 254m (JNRC002)

Rockley Prospect » Cu-Au porphyry system (440Ma intrusive suite)

- 8 drillholes (4,506m) included intercepts: ⁽²⁾
 - **60m @ 0.35% Cu, 0.1g/t Au from 388m**
- **Ridgeway-type porphyry alteration and veining - see photos below ⁽³⁾**



Lachlan Project

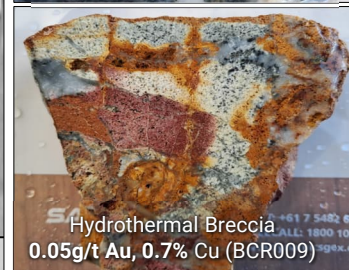
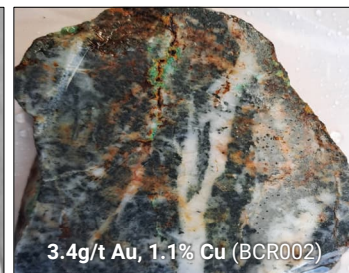
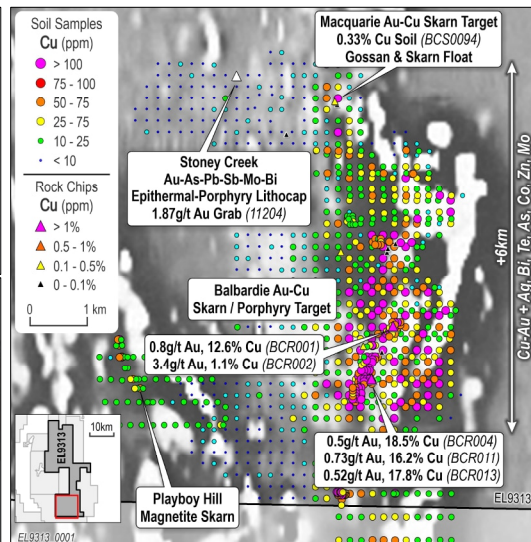
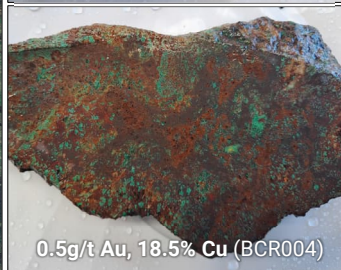
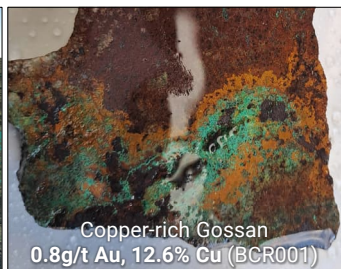
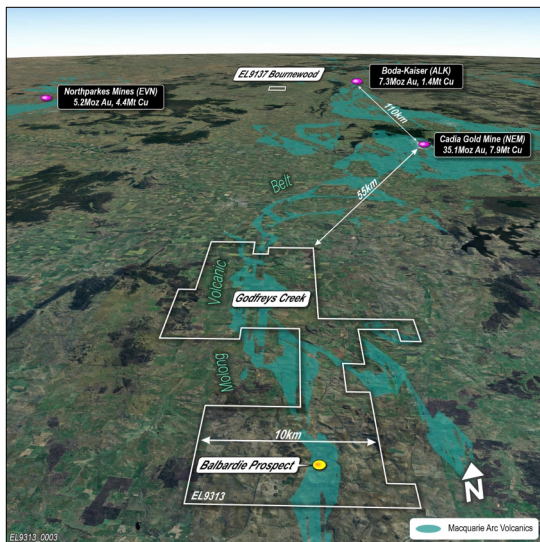
Breakfast Creek Project » Porphyry Cu-Au and high-grade Cu-Au Skarn Target

Breakfast Creek Cu-Au Project » Underexplored 392km² EL

- 55km south of Cadia Cu-Au porphyry (35.1Moz Au & 7.9Mt Cu) ⁽¹⁾
- Hosted in sub-cropping Molong Volcanic Belt, Macquarie Arc
- Potential for **high-grade Cu/Au skarn** and porphyry systems
- e.g. Browns Creek 1.29Mt @ 6.39g/t Au, 0.45% Cu ⁽²⁾
- Entire prospective belt currently held by majors and active juniors
- **Rare opportunity » Unexplored in Australia's premier Au-Cu belt**

Balbardie Au-Cu Prospect » Exciting high-grade skarn/porphyry

- **Significant +6km Cu-Au + pathfinder soil anomaly**
- Widespread skarn-type hydrothermal alteration & gossans
- **High-grade Cu-Au** grab samples: **3.4g/t Au**, 1.1% Cu (BCR002); 0.8g/t Au, **12.6% Cu** (BCR001); 0.5g/t Au, **18.5% Cu** (BCR004); 0.73g/t Au, **16.2% Cu** (BCR011); 0.52g/t Au, **17.8% Cu** (BCR013) ⁽³⁾
- **Very limited drilling » Targets remain untested**



Lachlan Project

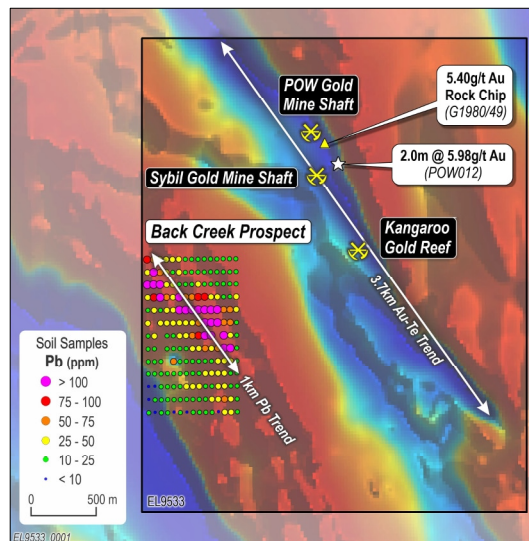
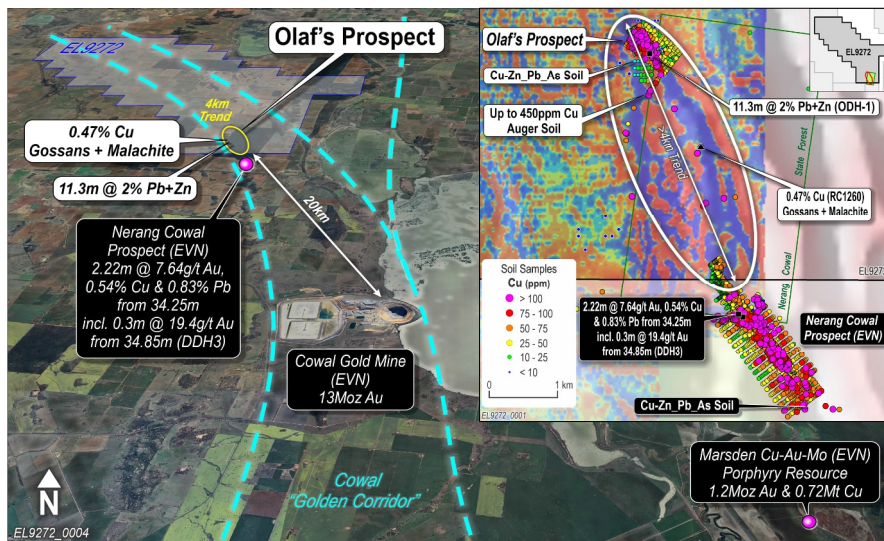
Wilga & Prince of Wales Projects » Standout Au Targets

Wilga Project (Olaf's Prospect) » 20km from +13Moz Cowl Au Mine ⁽¹⁾

- Mineralisation up to EL boundary: 2.22m @ 7.64g/t Au from 34.25m incl. 0.3m @ 19.4g/t Au from 34.85m (DDH3) ⁽²⁾
- +4km Carbonate Base Metal (CBM) trend
- Highly anomalous rocks: 0.47% Cu, 0.33% Zn (1260) ⁽²⁾; 1.32% Pb (788-4) ⁽³⁾
- Epithermal quartz-carbonate-adularia alteration
- Land access secured to **previously unexplored Olaf's Prospect**

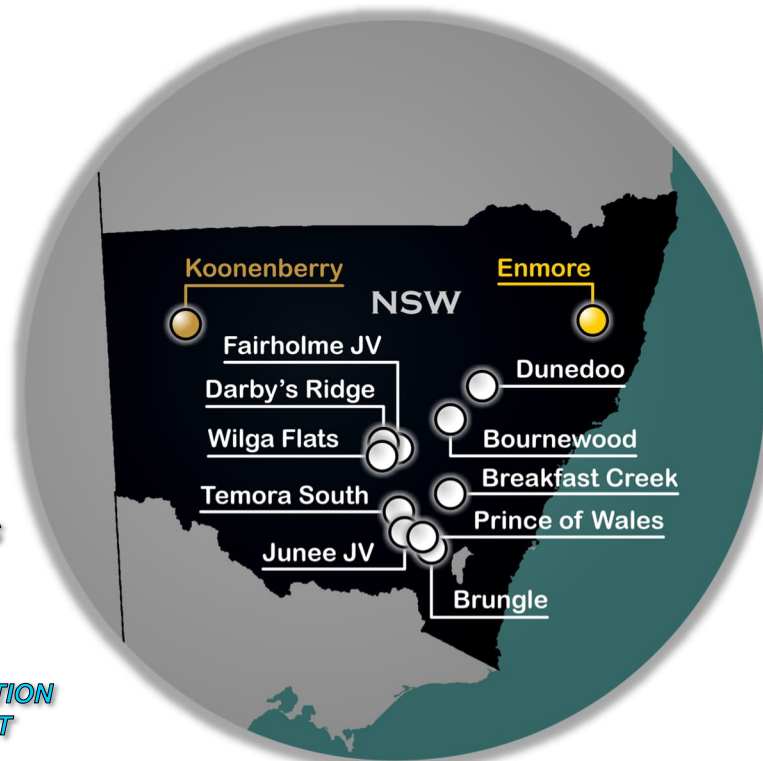
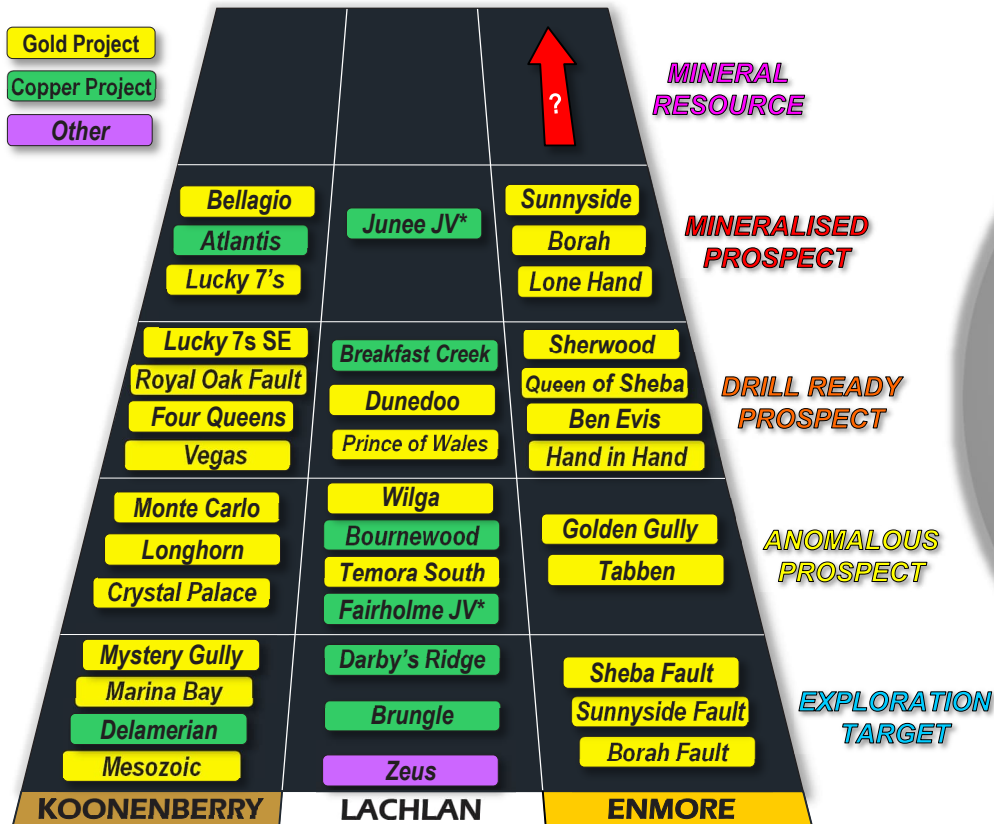
Prince of Wales Au Project » High-grade Au Targets

- Historic 1.8km underground workings; 170m deep (POW: 26.6k oz Au @ 8.7g/t Au) ⁽⁴⁾
- Shallow RAB only: 2m @ 5.98g/t Au from 32m to EOH (POW012) ⁽⁵⁾
- Two gold trends (POW and Back Creek)
- **Magnetite destructive alteration** (sericite-clay-qtz-carbonate-pyrite)
- No previous systematic drill testing along 4km structure



Koonenberry Gold

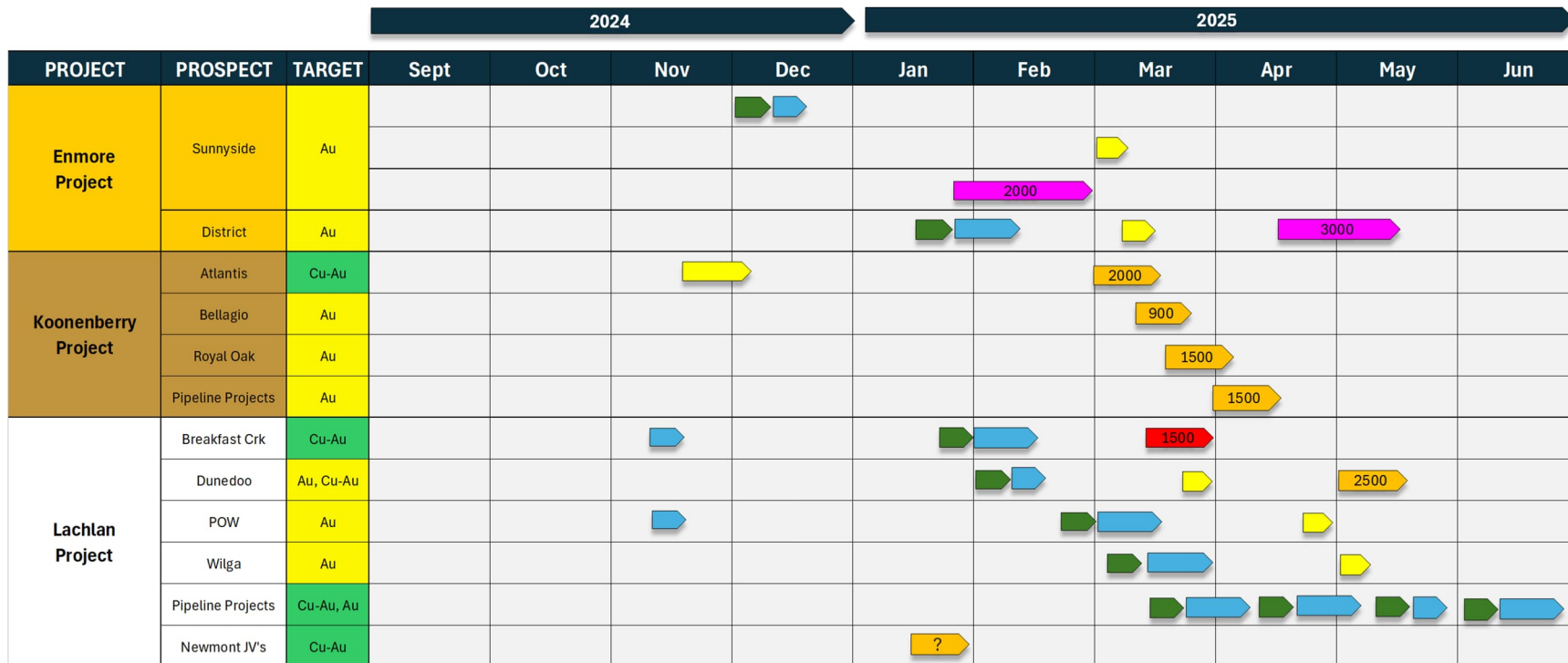
Significantly expanded Project Pipeline » Multiple discovery opportunities



Notes: * June and Fairholme Projects are in Joint Venture with Newmont (Manager)

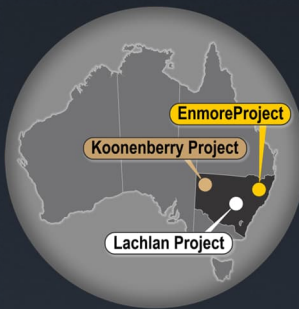
Koonenberry Gold – Forward Program

Balance of advanced, drill ready and early-stage discovery opportunities



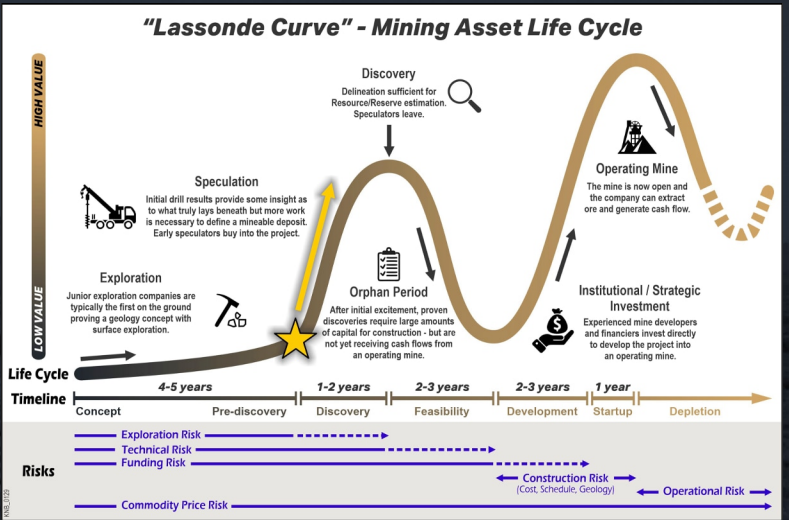
Geology
 Geochemistry
 Geophysics
 Air Core Drilling
 RC Drilling
 DH Drilling

> Consistent news flow for investors



Multiple drill-ready targets set to advance
Potential re-rating with exploration success

Geology	» Exciting Au and C-Au Portfolio » Orogenic Au, Epithermal Au & Porphyry Cu/Au systems
Scale	» 4,192km ² significant land package
Team	» Experienced in Au & Cu/Au exploration » Track record of discoveries (& hungry for more!)
Cash	» Well funded for discovery with \$5.4M cash ⁽¹⁾
Support	» Lion Selection Group + Lowell Resources Fund
Value	» Highly leveraged to exploration success
Timing	» Discovery drillhole already drilled at Enmore



★ 174m @ 1.83g/t from surface & 3m @ 8.86 from 172m to EOH

Notes: 1. Includes \$0.94M at 30 Sept 2024 + \$4.5M transaction Capital Raise (before costs)



For further information, please contact:

Dan Power
Managing Director

dan.power@koonenberrygold.com.au
+61 8 6245 9869

Johnathon Busing
Company Secretary

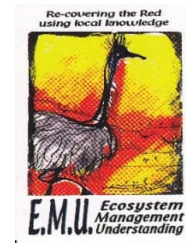
jb@11corporate.com.au
+61 8 6165 8858

Koonenberry Gold

ESG



- Focusing on minimising environmental impact
- Caring for the environment and fragile ecology
- Managing biosecurity and weed prevention
- Managing environmental compliance



- Focusing on stakeholder engagement and building trust
- Implementing effective health and safety measures
- Supporting local communities
- Utilising local suppliers, logistics and hire where possible



- Focusing on responsible and ethical business practices
- Maintaining a diverse mix of skills and experience
- Managing reporting obligations
- Adhering to rigorous ASX disclosure



Koonenberry Project

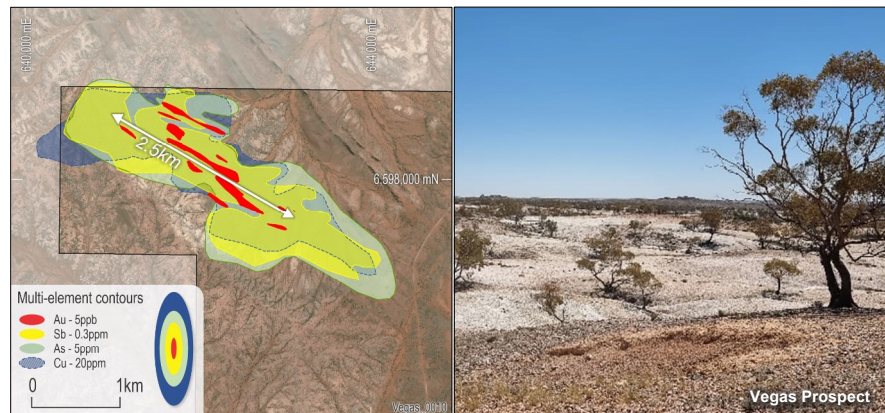
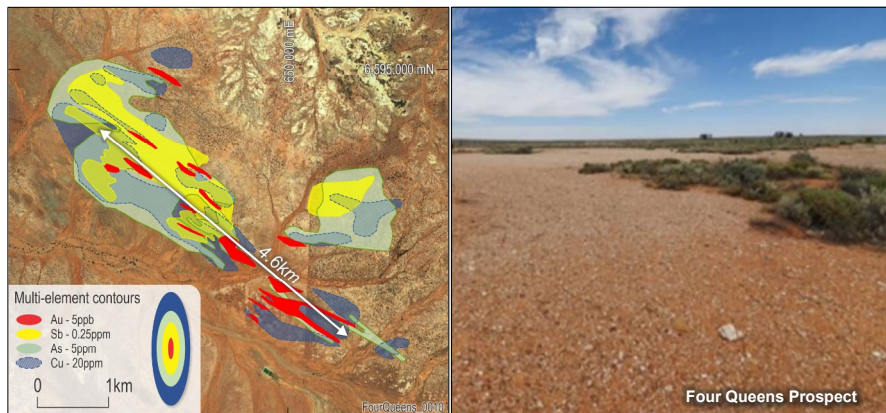
Additional Projects

Four Queens Prospect » High grade gold target

- Historic Lag sample results of 13.95g/t Au and 665ppm As ⁽²⁾
- Gold in soil anomaly 4.6km long and up to 750m wide (+5ppb, max 55.9 ppb Au) ⁽¹⁾
- Au +Sb-As ±Cu pathfinder element association
- Located along second order splay on Sth margin of Nuntherungie half-graben (pull-apart basin setting)
- No previous drill testing

Vegas Prospect » Shear zone hosted gold system

- Extensive quartz scree indicative of hydrothermal fluid flow
- Gold in soil anomaly 2.0km long and up to 450m wide (+5ppb, max 20.1 ppb Au) ⁽¹⁾
- Au +Sb-As ±Cu-Mo pathfinder element association
- Located near Koonenberry fault + intersection of splay faults
- Multiple stacked reefs
- No previous drill testing



New Opportunities

Identify and test fertile structures

GEOLOGY

- Western half of project exposed with outcropping mineralised quartz veins
 - Same age as Victorian Goldfields (~440Ma)
- Eastern half of project hidden under thin unmineralised cover rocks (Mesozoic)**
 - Palaeoplacer gold in basal pebble conglomerate (~65Ma)
- Koonenberry nugget field (recent)
 - Alluvial gold being derived from both mineralised quartz veins and the Mesozoic palaeoplacer deposits
 - Supported by gold nugget morphology

OPPORTUNITY

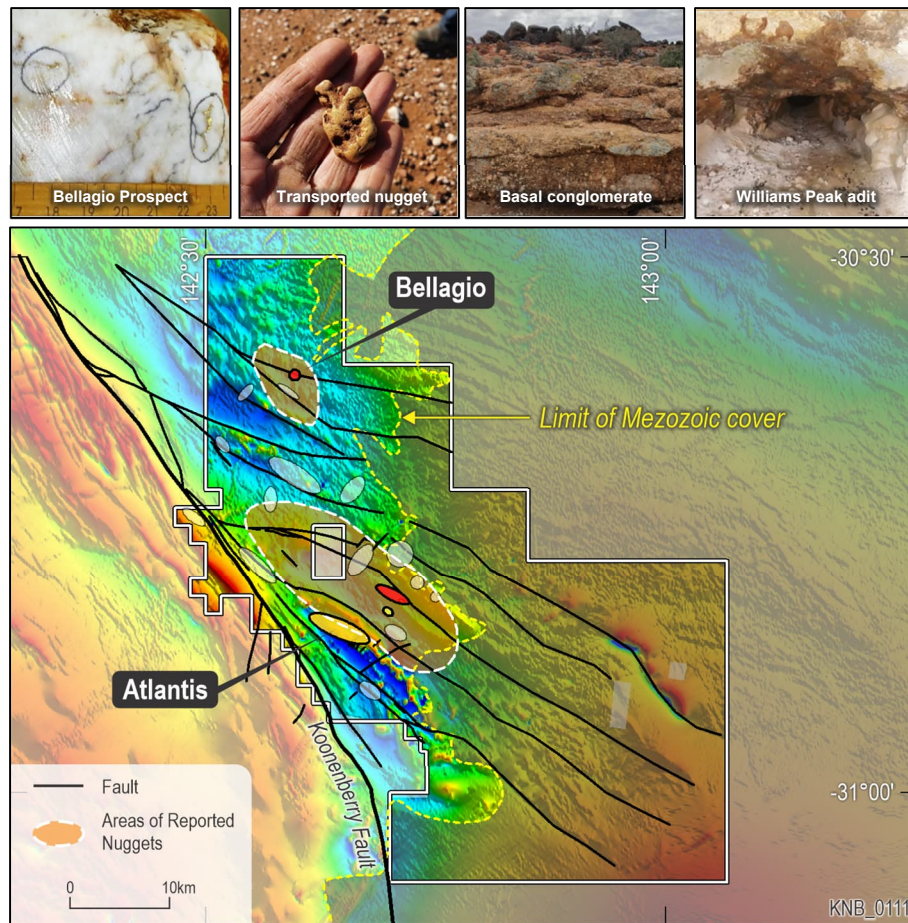
- Potential for large mineralised systems to be preserved under thin cover**
 - +160km of prospective structures under Mesozoic cover**
 - **Completely untested**
- Utilise pathfinder element zonation to vector towards gold systems

GEOPHYSICS

- Mineralised structures in outcrop can be mapped along strike in magnetic data**
 - Structures are interpreted to continue under thin cover to the SE
- Magnetic highs are also observed under shallow cover
 - Interpreted to represent mafic rocks thrust up from depth

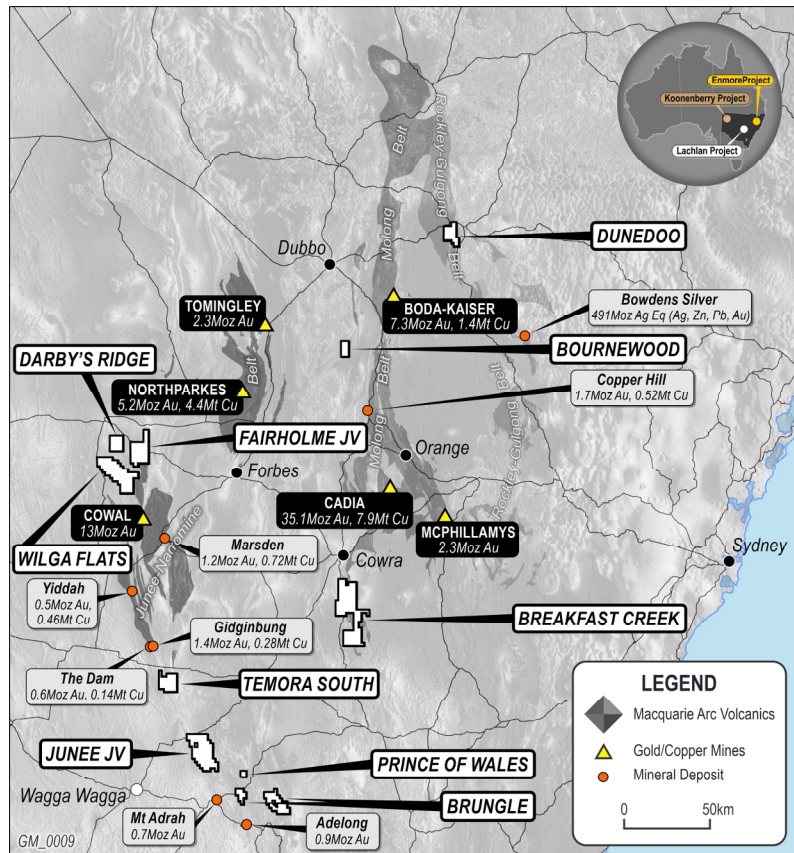
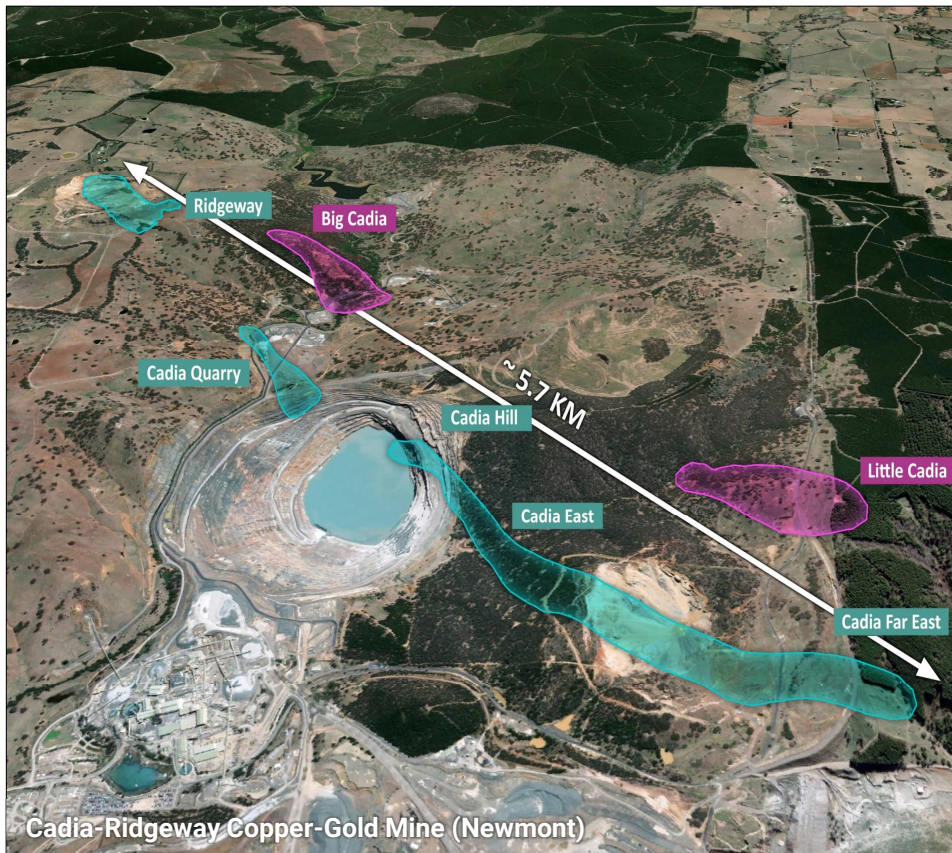
POSSIBLE GEOLOGICAL ANALOGUE

- Exploration under Murray Basin cover sediments north of Stawell and Bendigo
- Murray basin thickness: 0-150m+ ?; Koonenberry Mesozoic thickness: <10's m?
 - CYL: 12.9m @33.1g/t Au from 66.4m inc. 0.5m @831g/t Au ⁽¹⁾



Lachlan Project

Additional Projects

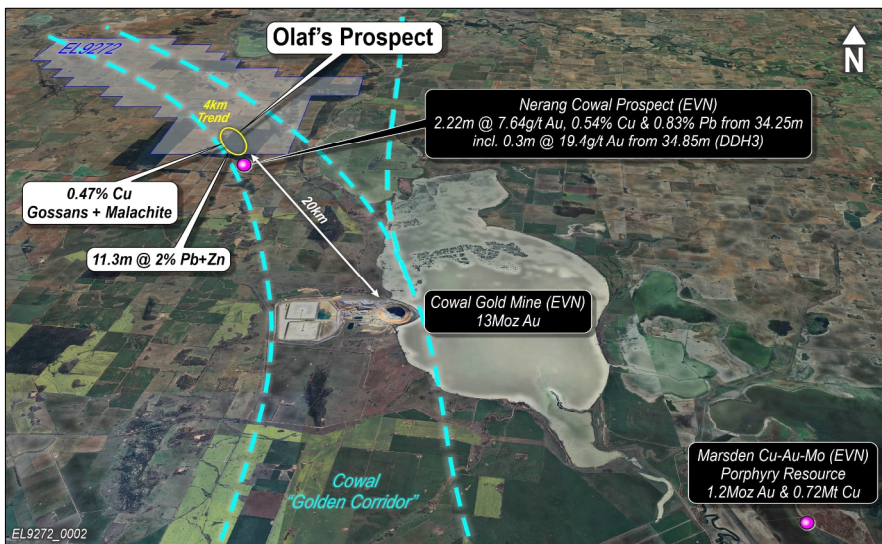


Lachlan Project

Wilga Project » Standout Epithermal Au Target

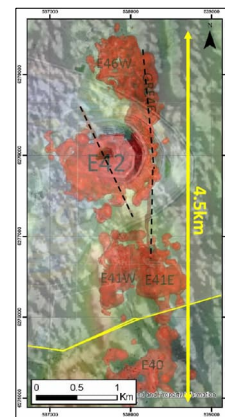
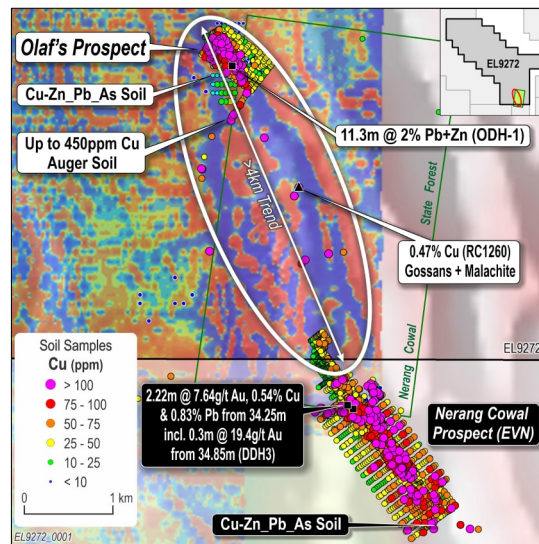
Wilga Project » 20km from +13Moz Cowal Au Mine ⁽¹⁾

- **Strategically located** 272km² Exploration Licence
- Coincident Magnetics and K-Radiometric signatures
- **Prospective features similar to Cowal Igneous Complex**
- +4km Carbonate Base Metal (CBM) trend
- No systematic exploration
- **Land access secured to previously unexplored Olaf's Prospect**



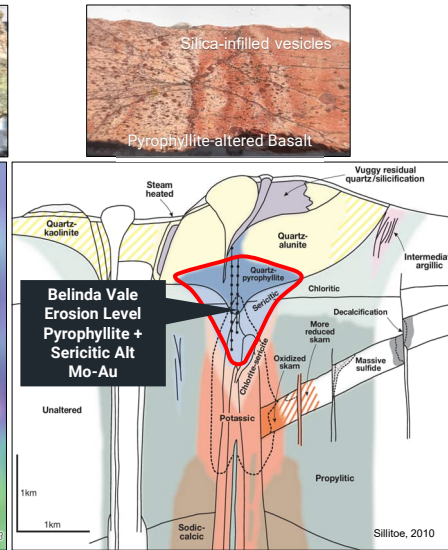
Olaf's Prospect » Mineralisation at EL boundary

- Significant drill results to south: **2.22m @ 7.64g/t Au** from 34.25m incl. **0.3m @ 19.4g/t Au** from 34.85m (DDH3) ⁽²⁾
- Cu-Zn-Pb-As soil anomaly (open); nb. Cu-Pb pathfinders at Cowal
- **Highly anomalous rocks: 0.47% Cu, 0.33% Zn** ⁽¹²⁶⁰⁾ ⁽²⁾; 1.32% Pb (788-4) ⁽³⁾
- Limited drilling confirms base metals: 11.33m @ 2% Pb+Zn (ODH-1) ⁽²⁾
- **Epithermal quartz-carbonate-adularia alteration**
- Pyrite>sphalerite>galena>chalcopryite veins



+13Moz Cowal Au Mine ⁽⁴⁾
at same scale as Olaf's

- **450 x 300m high amplitude “bullseye” magnetic anomaly**
- Coincident Cu-Mo + pathfinder element soil anomaly
- Previously misidentified high level alteration minerals
- Propylitic altered (ep-chl-cb-alb-ser) andesitic volcanoclastics + hornblende-phyric diorite (fertile). Pyrophyllite altered basalt to west
- **Features are consistent with upper parts Cu-Au-Mo porphyry system**



Lachlan Project

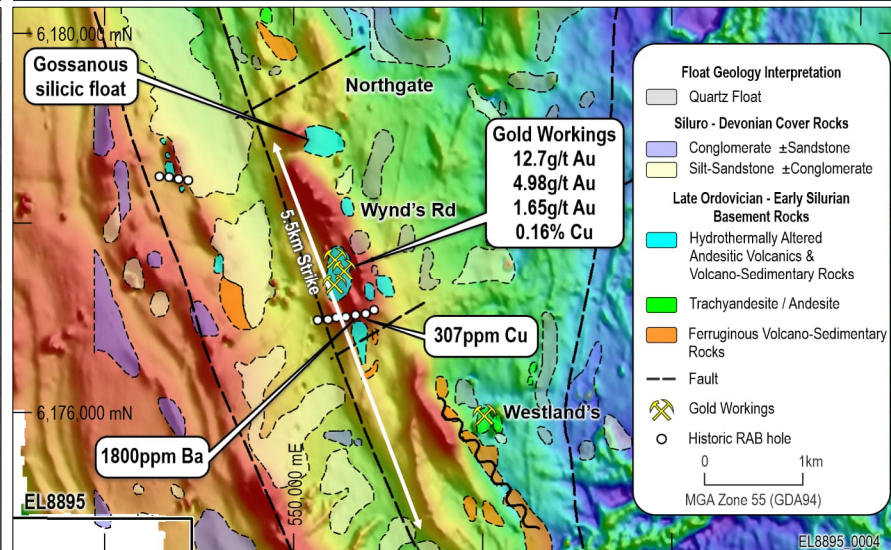
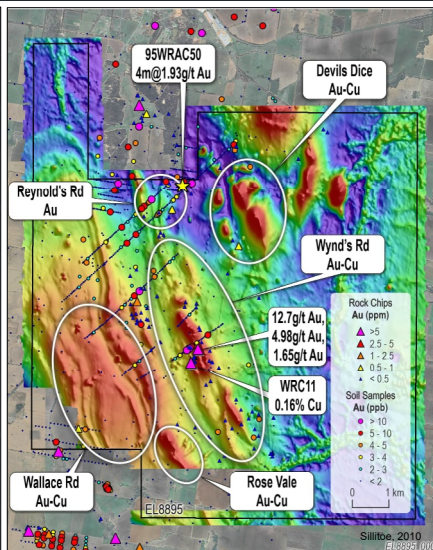
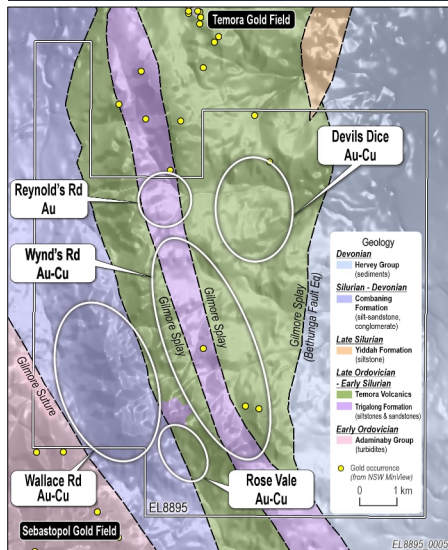
Temora South Project » Highly prospective & underexplored

Temora South Project » Epithermal Au & Porphyry Cu-Au Target

- 16 km from 1.4Moz Gidginbung HS Epithermal Au Mine ⁽¹⁾
- Prospective Late Ordovician to Early Silurian Volcanics (host to Gidginbung Mine and Temora Porphyry Cu-Au deposit)
- Bounded by Gilmore Suture and second-order splay faults
- “Roadside” RAB hole: 4m @ 1.93g/t Au to EOH (95WRAC50)
- Five targets identified

Wynds Rd Au Target » Underexplored outcropping gold system

- Historic workings: +400m strike
- Rock chips: 12.7g/t Au, 4.98g/t Au, 1.65g/t Au & 0.16% Cu ⁽²⁾
- +2.5km strike of phyllic - argillic - advanced argillic alteration
- Alteration assemblage consistent with root zone of lithocap
- Qtz-carb-cpy-py veins
- Untested linear magnetic highs (4 discrete “thumbprint” anomalies)
- No previous systematic drill testing/No RC or DD testing



Lachlan Project

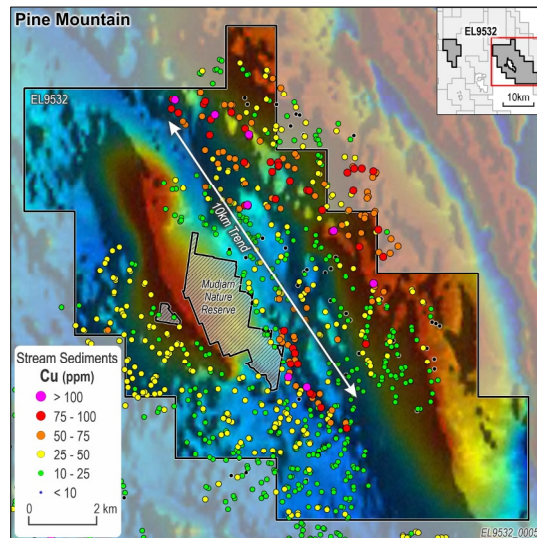
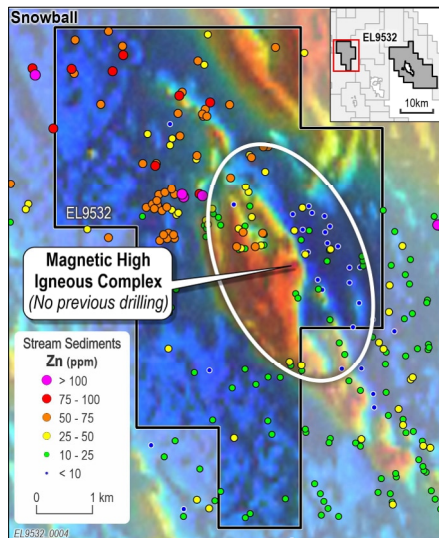
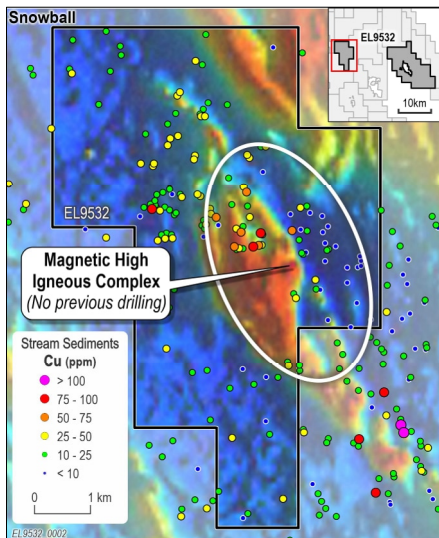
Brungle Project » Early-stage Cu-Au Porphyry discovery opportunity

Brungle/ Snowball Target » Porphyry Cu-Au

- Interpreted sub-cropping Macquarie Arc igneous complex
- **4.5 km x 2.0km ovoid shaped magnetic anomaly similar to Cadia**
- 1983 BHP Cu-Zn-Pb SSD anomaly shows classic porphyry zonation with proximal Cu and distal Zn anomalies ⁽¹⁾
- Porphyry alteration vectors inc. skarn, inner propylitic and potassic
- **No previous drill testing**

Brungle/ Pine Mountain Target » Porphyry/Epithermal Au-Cu

- **Historic Grab samples inc. 8.43g/t Au (5049/18) & 1.37% Cu ⁽²⁾**
- Significant scale & tenor BHP Cu-Pb-Zn-As SSD anomalies ⁽¹⁾
- Granite porphyry observed with typical lithocap observations inc. stockwork barite veining, disseminated galena-fluorite, pyritic boxworks & qtz-tml veining
- **No previous drill testing**



Lachlan Project

Darby's Ridge » Big targets under moderate cover

100% owned Project

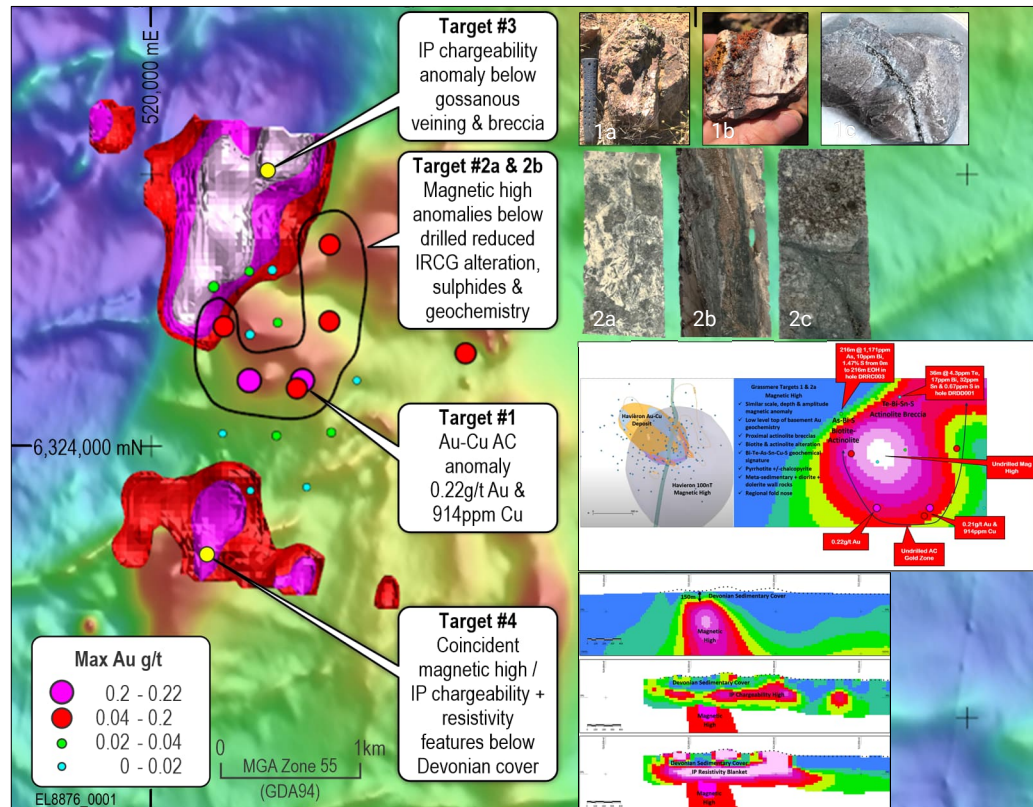
- Prospective Ordovician? - Silurian + Devonian metasediments and volcano-sedimentary rocks
- **Baseline datasets already acquired** including: 50m aeromagnetics/radiometric surveys, dipole-dipole IP survey, world view satellite imagery
- **Previously funded by Newmont**

Target type » Reduced Intrusion-related Cu-Au

- Havieron Au-Cu deposit analogy
- **Similar geology, alteration, geochemistry & scale**

Grassmere Prospect » Exciting Cu-Au Target

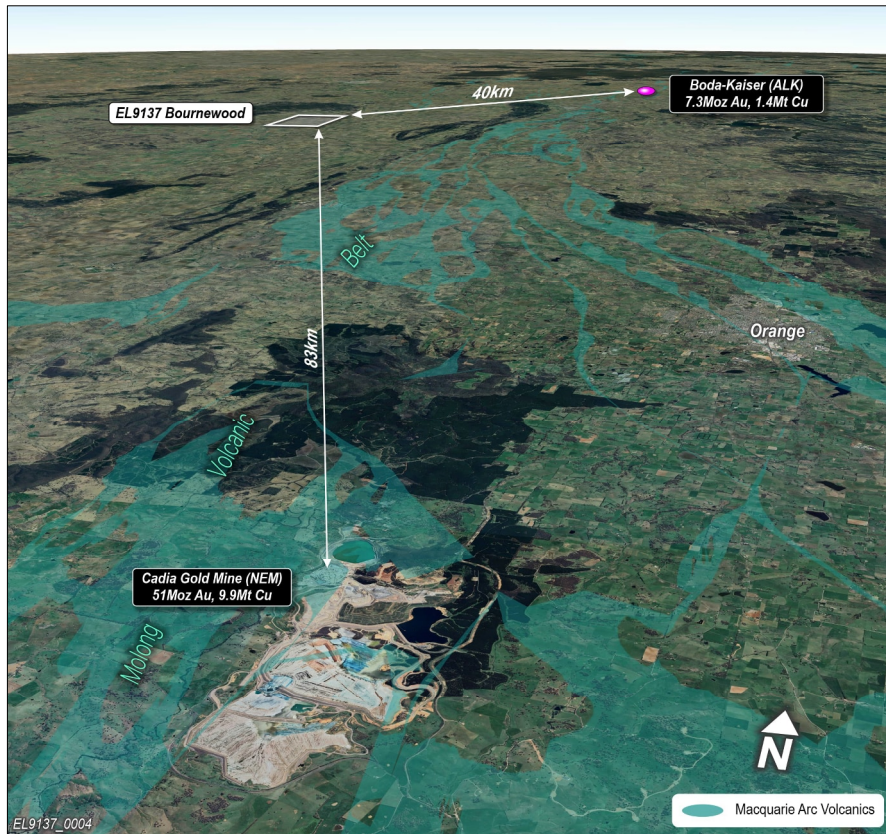
- Large magnetic high complex
- Fold nose structural setting
- **Semi coincident IP chargeability, conductivity & resistivity anomalies**
- **Large >2km Au-Cu Aircore anomaly** (max 0.22g/t Au, 914ppm Cu, +1171ppm As \pm Zn \pm Pb)
- Only four RC/DH completed
- **Extensive reduced intrusion-related alteration** (bt-act-po \pm cpy \pm sp \pm ga) \rightarrow inc. intensity with depth
- **Several >600m diameter "bullseye" magnetic anomalies remain undrill tested**



Photos: 1a/b. Outcropping gossanous, quartz veined & altered meta-sediments; 1c. Drill chip from DDR003 (135-136m);
 2a. Calc silicate-sulphide cemented hydrothermal breccia (DRDD001, 307.1m); 2b. Calc silicate-sulphide (po-cpy-sp-ga) vein in potassic alt (bt) meta-mudstone
 2c. Potassic (bt) altered diorite porphyry & calc silicate-sulphide veinlets (DRDD001, 393.6m)

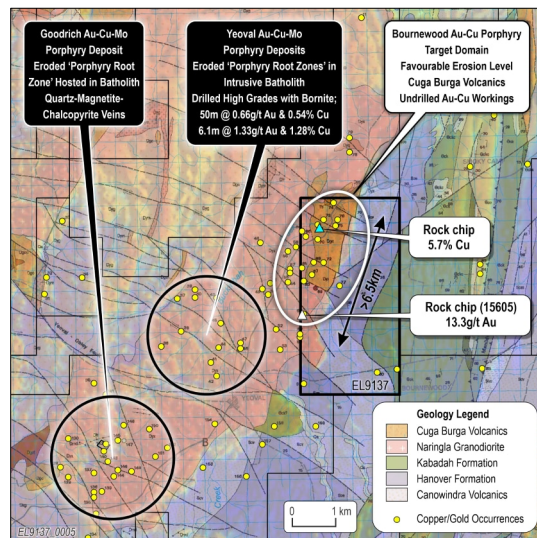
Lachlan Project

Molong Belt » Bournewood Cu-Au Porphyry Project



Bournewood Cu-Au Project » Favourable geology and erosional level

- Rock chips to 13.3g/t Au (15605) ⁽¹⁾ and 5.7% Cu ⁽²⁾
- Numerous historic Cu-Au workings
- Devonian volcanics next to Devonian intrusions
- Alteration vectors indicative of upper/outer LFB Cu-Au porphyry (phyllitic/argillic, inner propylitic (act-ep-mt-sulphide), mt-skarn)
- High grade Au-Cu-Mo-Bi surface geochemistry
- No previous RC/DDH testing of copper soil anomaly

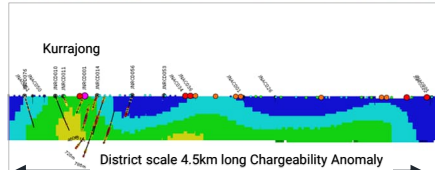
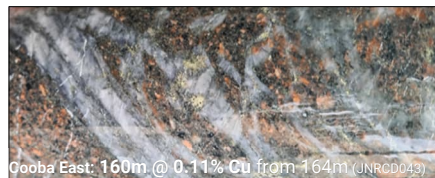
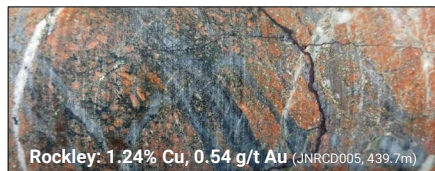
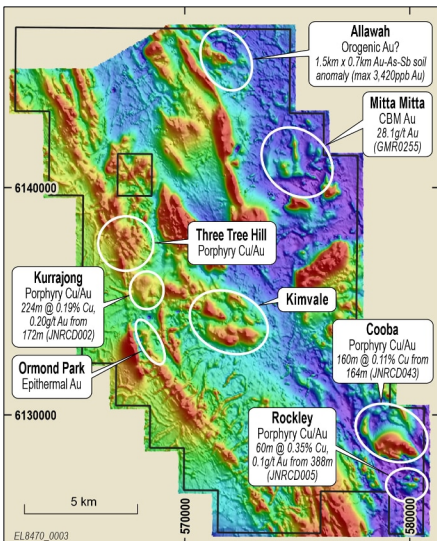


Lachlan Project

Junee JV Project » Newmont JV (KNB 20% free carried interest)

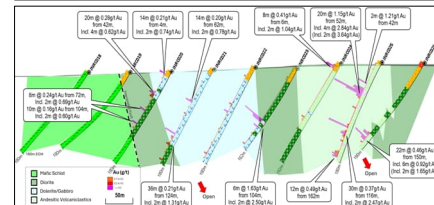
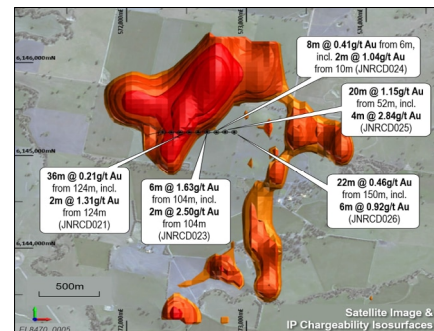
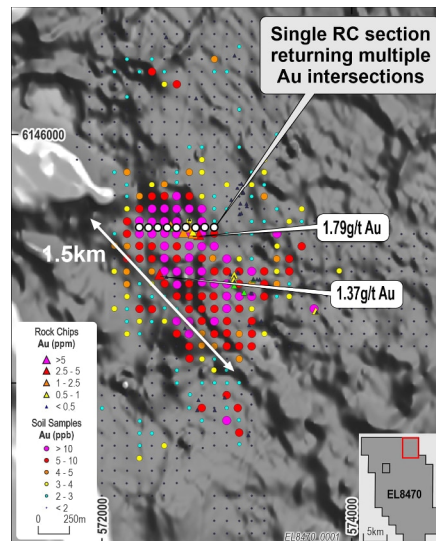
Junee JV Project » Multiple Porphyry Cu/Au & Epithermal Au Targets

- “Unusually fertile segment of Macquarie Arc – Alan Wilson” ⁽¹⁾
- “Intensity of porphyry-veining in first pass drilling superseded only by systematic exploration of the Cadia and Northparkes districts” ⁽¹⁾
- Multiple Targets; 4x alkaline porphyry systems identified
- **Extensive datasets and drilling completed (~\$23.9M)**
- Shallow exploration for LFB, with systems exposed at/near surface
- **Project funded by Newmont with drilling planned**



Allawah Prospect » Orogenic Au? (2.3Moz Tomingley-style) ⁽³⁾

- 1.5km x 0.7km Au-As-Sb-Te-Bi-Cu soil anomaly (Max 3,420ppb Au) ⁽²⁾
- Rock chips: 1.79g/t Au (SN9986) and 1.37g/t Au (SN9987) ⁽²⁾
- Pervasive sericite-carbonate-quartz-chlorite-fuchsite alteration
- Quartz-carbonate-pyrite-arsenopyrite veining and breccias
- **Single traverse of drilling** returned significant intercepts: ⁽²⁾
 - 20m @ 1.15g/t Au from 52m inc. 4m @ 2.84g/t Au from 60 (JNRC025)
- **Largely untested IP Chargeability anomaly**

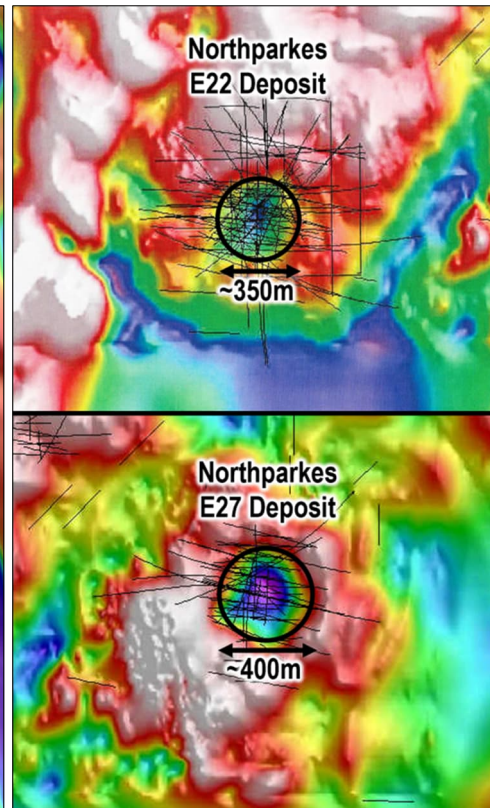
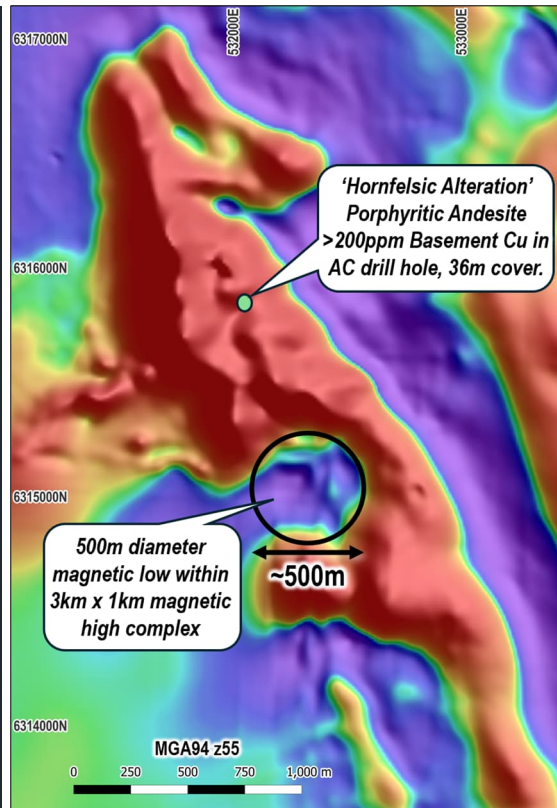


Lachlan Project

Fairholme JV Project » Newmont JV (KNB 51% interest)

Newmont Joint Venture » Porphyry Cu-Au Targets

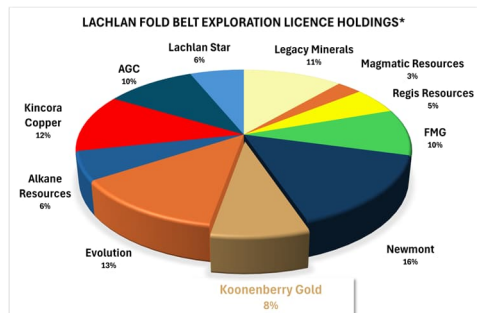
- Newmont may earn up to 80% by spending AUD\$5M (at their discretion)
- Immediately north of Kincora Copper Porphyry Cu-Au Gateway Prospect (123m @ 0.62g/t Au & 0.12% Cu) ⁽¹⁾
- Fairholme Igneous complex
- **Most underexplored igneous complex in Cowal region**
- Prospective Ordovician stratigraphy including Phase 4 high-level shoshonitic intrusives ⁽²⁾ (known to host Cadia & Northparkes Mines)
- **Concealed below moderate cover (36m – 150m)**
- Arc parallel and cross-arc structures interpreted
- **Numerous Northparkes-style magnetic features (“doughnuts”)** – one example at Figure right
- Anomalous Cu-Au in Aircore (>0.1g/t Au & >500ppm Cu)
- Inner propylitic alteration assemblages (chl-mt-ep)
- **Northparkes-style Targets » Drilling planned**



Appendix 1

Data used for ground holding comparison, pp12 (20/09/2024)

Company	Km2	Tenement (Units)
Legacy Minerals	2239	814
Magmatic Resources	571	200
Regis Resources	1070	366
FMG	1892	647
Newmont	3073	1051
Koonenberry Gold	1580	758
Evolution	2559	875
Alkane Resources	1170	400
Kincora Copper	2347	799
AGC	2033	719
Lachlan Star	1217	



References

- 24/09/2021. Peters, J. Koonenberry Gold Pty Ltd Independent Geologist's Report - Koonenberry Gold Project 10 May 2021 contained in Koonenberry Gold Ltd Prospectus.
- 14/12/2021 KNB (ASX). Koonenberry Gold, Project update.
- 29/04/2022 KNB (ASX). Koonenberry Gold, Quarterly Activities Report for the period ended 31 March 2022.
- 24/05/2022 KNB (ASX). Structural Studies Update.
- 28/07/2022 KNB (ASX). Koonenberry Gold, Quarterly Activities Report for the period ending 30 June 2022.
- 15/08/2022 KNB (ASX). Drilling commences at Lucky Sevens high grade gold Prospect.
- 10/10/2022 KNB (ASX). Completes drilling at Lucky Sevens high grade gold Prospect.
- 24/10/2022 KNB (ASX). Koonenberry Gold, Quarterly Activities Report for the period ending 30 September 2022.
- 28/11/2022 KNB (ASX). Koonenberry Gold, Lucky Sevens High Grade Gold Prospect Update.
- 21/12/2022 KNB (ASX). Koonenberry Gold, Maiden RC Drilling Results for Lucky Sevens Gold Prospect.
- 24/02/2022 KNB (ASX). Koonenberry Gold, Commencement of 2023 Field Work following database review.
- 01/03/2023 KNB (ASX). Koonenberry Gold, EM Geophysical Survey Underway at Atlantis Au-Cu Prospect.
- 21/03/2023 KNB (ASX). Koonenberry Gold, EM Conductor detected at Atlantis Au-Cu Prospect.
- 03/04/2023 KNB (ASX). Koonenberry Gold, Exciting 22.5g/t Gold in quartz vein outcrop at Bellagio.
- 26/04/2023 KNB (ASX). Koonenberry Gold, Quarterly Activities Report for the period ended 31 March 2023.
- 31/05/2023 KNB (ASX). Bellagio Prospect and Regional Project Update.
- 25/07/2023 KNB (ASX). Koonenberry Gold. Quarterly Activities Report for the period ended 30 June 2023.
- 04/08/2023 KNB (ASX). Koonenberry Gold. Approval to commence maiden drilling program at Bellagio.
- 06/09/2023 KNB (ASX). Koonenberry Gold. Drilling program update for Bellagio Gold Prospect.
- 03/10/2023 KNB (ASX). Bellagio Gold Prospect Encouraging Initial Drill Results.
- 07/09/2023 KNB (ASX). Addendum to Bellagio Update Announcement.
- 23/10/2023 KNB (ASX). Quarterly Activities Report for period ending 30 September 2023.
- 30/10/2023 KNB (ASX). Widespread gold mineralisation identified from first pass drilling at Bellagio.
- 20/11/2023 KNB (ASX). High impact follow up drilling to commence at Bellagio.
- 12/12/2023 KNB (ASX). Bellagio drilling intersects visible gold and widespread alteration.
- 16/01/2024 KNB (ASX). Approval to commence maiden drilling program at Atlantis.
- 31/01/2024 KNB (ASX). Quarterly Activities Report for the period ending 31 December 2023.
- 05/02/2024 KNB (ASX). Bellagio drilling defines widespread gold mineralisation.
- 10/04/2024 KNB (ASX). Commencement of drilling at Atlantis Cu-Au Project.
- 19/04/2024 KNB (ASX). Project update.
- 30/04/2024 KNB (ASX). Quarterly Activities Report for the period ended 31 March 2024.
- 28/05/2024 KNB (ASX). Copper mineralisation intersected at Atlantis.
- 13/06/2024 KNB (ASX). Bellagio gold footprint extended and new targets defined.
- 19/06/2024 KNB (ASX). Drilling to test priority Cu-Au targets at Atlantis.
- 23/07/2024 KNB (ASX). Quarterly Activities Report for the period ended 30 June 2024.
- 30/07/2024 KNB (ASX). Downhole geophysics commenced at Atlantis.
- 17/10/2024 KNB (ASX). Transformational acquisition of exciting NSW Au and Cu/Au portfolio.
- 18/11/2024 KNB (ASX). KNB commences Ground EM Geophysics at Atlantis Cu-Au Prospect.

References

- Alan Wilson, 2022. GeoAqua Consultants Ltd, Internal Report for Gilmore Metals.
- Alkane 2023. ASX Announcement, Boda Resource Update Increases Gold and Copper Grades, 14 December 2023 CMOC 2023.
- Buchhorn, D.A. 1972. Exploration report EL 303, Obley - Yeoval area. R00025116 (GS1971/052), p30.
- China Molybdenum Company Limited, 2022 Annual Report, <http://www.cmocinternational.com>
- Crawford, Cooke and Fanning, 2007. Geochemistry and age of magmatic rocks in the unexposed Narromine, Cowal and Fairholme Igneous Complexes in the Ordovician Macquarie Arc, New South Wales.
- Evolution Mining (ASX:EVN), 2023. Mining Annual Mineral Resources and Ore Reserves Statement.
- Evolution Mining (ASX:EVN), 07/092017. Cowal Gold Mine, District Geology Overview.
- Foster, J. T., 1977. Exploration report ELs 761 and 819, Wamboyn, R00011956.
- Gilligan, L. B., 1980. An inspection of the Prince of Wales Gold Mine, Gundagai. R00011444 (GS1980/010).
- Glen, Quinn, Cooke., 2012. The Macquarie Arc, Lachlan Orogen, New South Wales: its evolution, tectonic setting and mineral deposits, Episodes Vol. 35, No 1.
- Harris, Cooke, Cuisson, Groome, Wilson, Fox, Holliday, Tosdal., 2020. Geologic Evolution of Late Ordovician to Early Silurian Alkaline Porphyry Au-Cu Deposits at Cadia, New South Wales, Australia, SEG Special Publication 23.
- Holliday and Cooke, 2007. Advances in Geological Models and Exploration Methods for Copper + Gold Porphyry Deposits "Proceedings of Exploration 07: Fifth Decennial International Conference on Mineral Exploration."
- Larvotto Resources (ASX:LRV), 2023. Hillgrove Acquisition Amended Release 1.4Moz @ 6.1g/t AuEq Gold-Antimony Hillgrove Project Acquired (22/12/2023).
- McDonald, 2006. Third Annual Exploration Report R00002515 p290. Co-ords from Minview Gold Occurrence.
- Newmont 2023 (ASX:NEM). Mining Annual Mineral Resources and Ore Reserves Statement, <https://operations.newmont.com/reserves-and-resources>.
- Unknown Author, 1976. First report ELs 761 and 819 Wamboyn, R00013497. Coordinates from Minview Geochemistry.
- Phillips, G. N. (Ed), 2017. Australian Ore Deposits (The Australasian Institute of Mining and Metallurgy: Melbourne).
- Regis Resources (ASX:RRL), 2023. Annual Mineral Resource and Ore Reserve Statement 8 June 2023.
- Silver Mines (ASX:SVL), 2024. Investor Marketing, Precious Metals Summit, Beaver Creek (10/09/2024).
- Smart, G and Wilkins, C., 1997. The Geology of the Browns Creek Gold-Copper Skarn Deposit, Blaney, NSW
- Catalyst Minerals (ASX: CYL), 17/05/2022. Gold grades of up to 831g/t at Lawry Prospect, Tandarra.
- Manhattan Corporation (ASX: MHC), 06/12/2021. Drilling intersects 8m at 40.5g/t Au.
- Manhattan Corporation (ASX: MHC), 23/03/2022. Outstanding wide zones of shallow gold.
- North Stawell Minerals (ASX: NSM), 2021.01.31. December 2021 Quarterly Activities Report, p14.
- North Stawell Minerals (ASX: NSM), 21/06/2023. Technical Update June 2023 – OREAS Vic Round Up Conference.
- Cayley, R. A., et al., 2011. Crustal architecture of central Victoria: results from the 2006 deep crustal reflection seismic survey.
- Direen, N. G., 2021. Koonenberry seismic reinterpretation of reprocessed data. Internal report for Koonenberry Gold Ltd.
- Greenfield J. and Reid, W., 2006. Orogenic gold in the Tibooburra area of northwestern NSW a ~440 Ma ore system with comparison to the Victorian Goldfields.
- Miller, J., et al., 2005. Evolution of a reworked orogenic zone: The boundary between the Delamarian and Lachlan fold belts, southeastern Australia.
- Phillips, D., et al., 2012. Timing of gold mineralisation in the western Lachlan Orogen, SE Australia: A critical overview.
- Victorian State Government, 2021. Earth Resources Regulation Annual Statistical Report FY2020-21.
- Willman, et al., 2010. Crustal-Scale Fluid Pathways and Source Rocks in the Victorian Gold Province, Australia: Insights from Deep Seismic Reflection Profiles (Society of Economic Geologists, Inc. Economic Geology, v. 105, pp. 895–915).