

14 October 2021



E79 Gold Mines to present at the Resources Rising Stars-Miningnews.net "Boom in a Room" Investor Conference

West Australian-based explorer E79 Gold Mines Limited (**ASX: E79**) ('E79' or 'the Company') is pleased to advise that Ned Summerhayes, CEO, will deliver an updated corporate presentation at the 2021 Resources Rising Stars-Miningnews.net "Boom in a Room Investor Conference".

The Company invites shareholders and investors to view the Company's presentation live at 1:15pm WST on 14 October 2021. Investors and shareholders based in Perth are able to attend the in-person event at the RAC Arena in Perth, Western Australia.

A copy of the presentation is attached.

Investors can register online to view the presentation at the RRS-Miningnews.net conference website: www.rrsinvestor.com

Authorised for release by Ned Summerhayes, CEO.

For Further Information, please contact:

E79 Gold Mines Limited

Phone: 08 9287 7625

info@e79gold.com.au

Media Enquiries:

Nicholas Read – Read Corporate

Phone: 08 9388 1474

ASX Code: E79

Shares on issue: 65M

Market capitalisation: 15M

Cash: \$8.7M (12 October 2021)

ABN 34 124 782 038

Head Office

168 Stirling Hwy

Nedlands, Western Australia 6009

T: +61 8 9287 7625





E: info@e79gold.com.au W: e79gold.com.au

E79 GOLD MINES

Money in the Ground

DISCLAIMER



-  This presentation contains only an overview of E79 Gold Mines Limited (“E79” or the “Company”) and its activities and operations. The contents of this presentation, including matters relating to the geology and exploration potential of the Company’s projects, may rely on various assumptions and subjective interpretations which it is not possible to detail in this presentation and which have not been subject to any independent verification.
-  This presentation contains a number of forward-looking statements. Known and unknown risks and uncertainties, and factors outside of the Company’s control, may cause the actual results, performance and achievements of the Company to differ materially from those expressed or implied in this presentation.
-  To the maximum extent permitted by law, E79 does not warrant the accuracy, currency or completeness of the information in this presentation, nor the future performance of the Company, and will not be responsible for any loss or damage arising from the use of the information.
-  The information contained in this presentation is not a substitute for detailed investigation or analysis of any particular issue. Current and potential investors should seek independent advice before making any investment decision in regard to the Company or its activities.

-  **Good management** – track record of discovery and successful development
 - 2008 Explorer of the Year (Integra Mining)
 - 2010 Miner of the Year (Integra Mining)
 - 2020 Craig Oliver Award Winner (Stavely Minerals)
-  **Good ground** – two sizeable projects in prolific ‘world-class’ greenstone belts
-  **Good strategy** – ‘money in the ground’, applied technology in exploration leading to discovery
-  **Shareholder value** – a history of delivering for shareholders



Non-Executive Chair

Chris Cairns

BSc (Hons1) Economic Geology
Fellow – Australian Institute of Geoscientists (AIG)
Fellow – Australian Institute of Mining and Metallurgy (AusIMM)
Member – Society of Economic Geologists
Ex-Integra Mining, Sino Gold, Lion Ore, Aurora Gold, BHP
Current - Chair, Staveland Minerals Limited
Member, Joint Ore Reserves Committee
Chair, Australian Prospectors and Miners Hall of Fame

Non-Executive Director

Deborah Lord

BSc (Hons) Geology
Fellow – Australian Institute of Mining and Metallurgy
Member – Australian Institute of Geoscientists
Graduate – Australian Institute of Company Directors
Ex-WMC, Placer Dome, SRK Consulting, BHP
Current - Director, Valuation and Resource Management (VRM)
Director, UWA Centre for Exploration Targeting (CET)
Chair, VALMIN Committee
Advisory Committee, Minerals Research Institute of WA



Non-Executive Director

Peter Ironside

BCom Chartered Accountant

Ex-Coopers and Lybrand, Integra Mining, Extract Resources

Current – Director, Stavely Minerals
Company Sec, ADX Energy

Chief Executive Officer

Edward (Ned) Summerhayes

BSc (Hons) Geology

Member – Australian Institute of Geoscientists

Ex-Black Cat Syndicate, Silver Lake Resources, Leyshon Resources,
Kimberly Diamond Co

Company Secretary

Amanda Sparks

BBus, Chartered Accountant

Fellow – Financial Services Institute of Australia (Finsia)

Ex- Ernst & Young, Fugro, Integra, Conoco-Philips, Excelsior Gold

Current - Company Sec, ADX Energy
Company Secretary / Non-Exec Director, Stavely Minerals



CAPITAL STRUCTURE



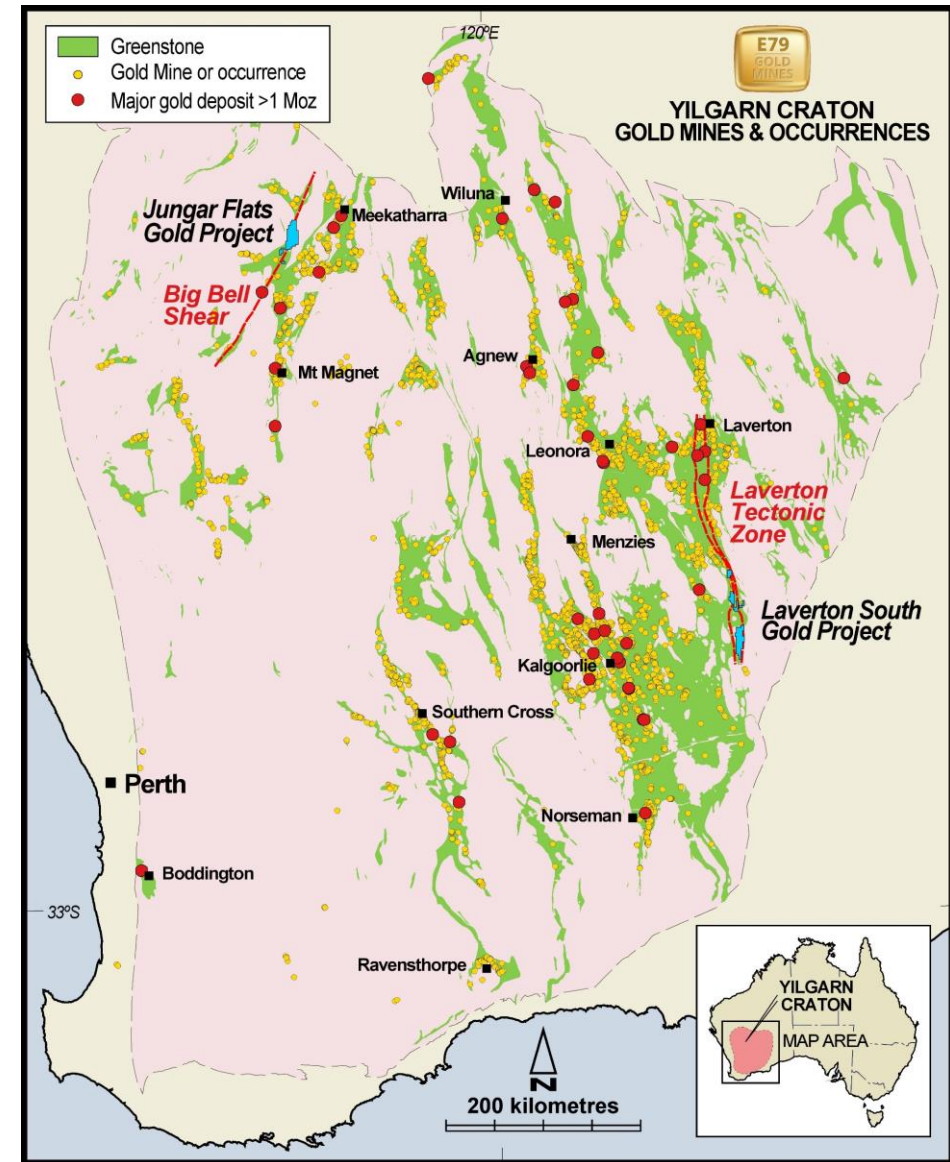
Shares on issue	65,074,824
Market Capitalisation	\$15M
Cash on Hand	\$8.7M
Enterprise Value	\$6.3M
Board and Management Holding	~15.6%
Shares on escrow	21.9%
Top 20 Shareholders	43.3%

PROJECTS

E79
GOLD
MINES

Two projects in the Eastern Goldfields of Western Australia

- 346 km² of tenure in the Laverton Tectonic Zone - one of the world's most prolific gold belts ~30Moz
- 337km² of tenure in the Murchison Belt – ~30Moz of endowment



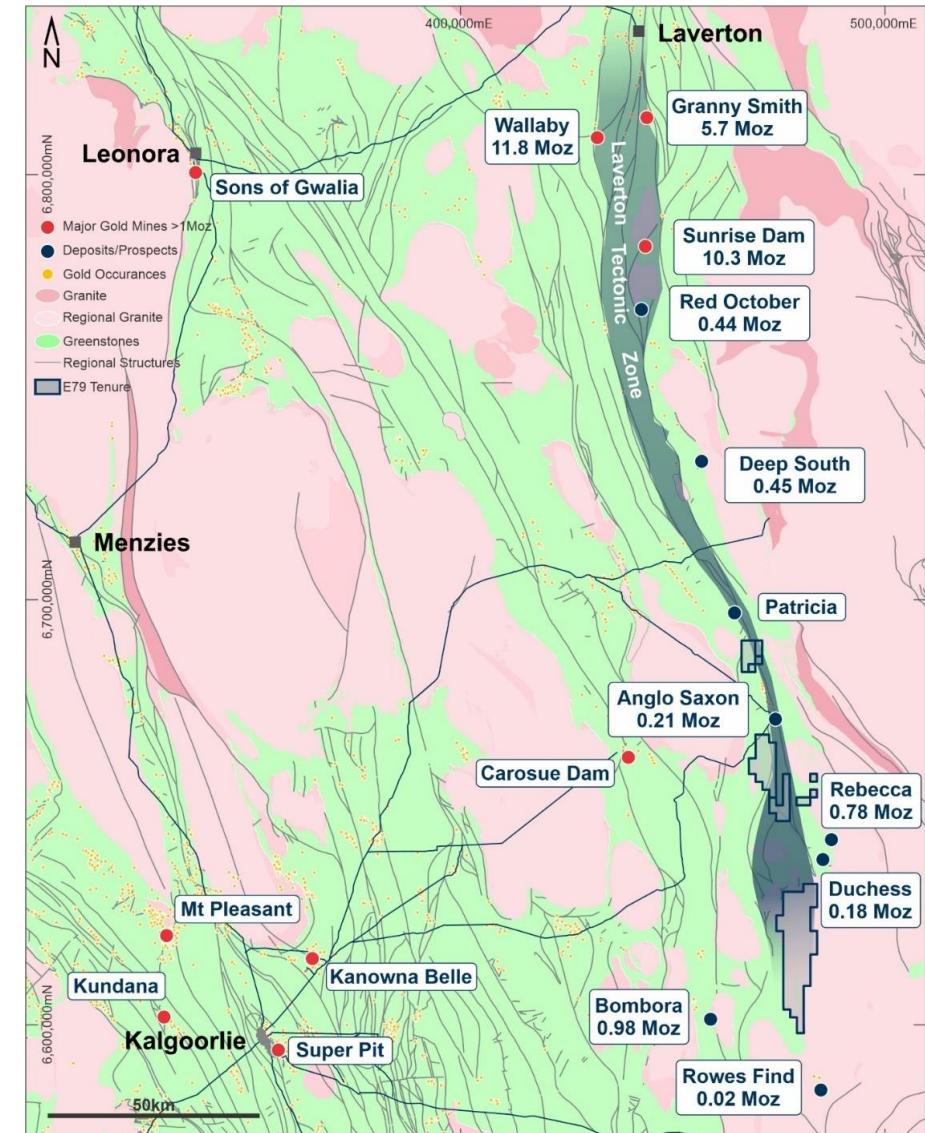
“Money in the ground.”

Laverton South Project



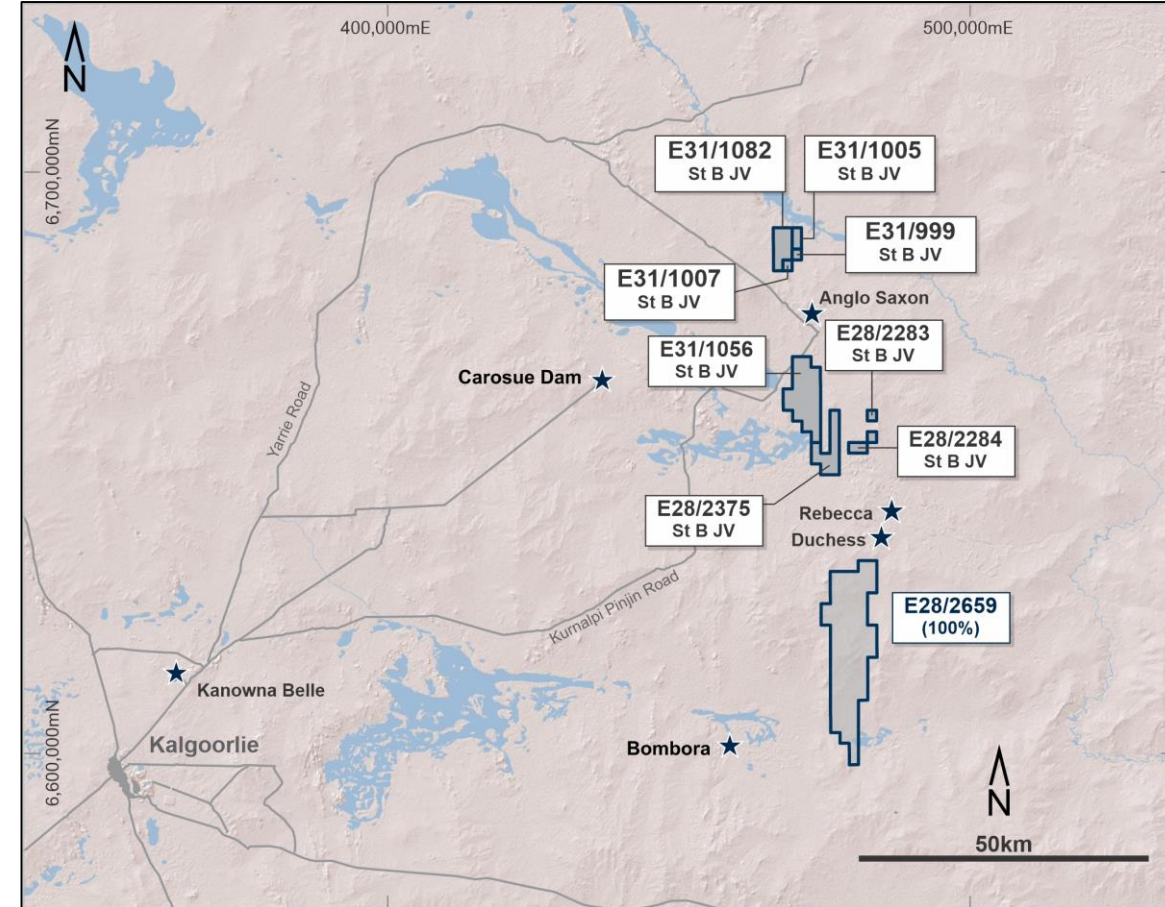
Relative to the north-central portions of the belt, the southern portion is under-explored

Deposit	Historical Production			Resources						Endowment
				Meas & Ind			Inf			
	Tonnes (kt)	Grade	Ounces	Tonnes (kt)	Grade	Ounces	Tonnes (kt)	Grade	Ounces	Ounces
Granny Smith	-	-	5,100,000	3,581	3.77	434,000	2,067	3.44	229,000	5,763,000
Wallaby	-	-	4,500,000	29,990	6.20	5,977,000	8,985	4.41	1,273,000	11,750,000
Sunrise Dam	-	-	6,700,000	41,090	2.02	2,670,000	12,550	2.38	960,000	10,330,000
Red October	1,700	6.1	342,000	324	4.6	48,000	99	15.3	49,000	439,000
Deep South	2,077	3.1	209,236	1,897	2.7	162,000	1,031	2.3	78,000	449,236
Anglo Saxon	673	2.4	49,694	449	6.9	99,000	347	5.2	58,000	206,694
Rebecca	-	-	-	13,600	1.5	640,000	6,800	0.9	200,000	840,000
Duchess	-	-	-	4,150	0.9	125,000	2,700	0.8	75,000	195,000
Bombora	-	-	-	18,356	1.4	803,000	4,853	1.1	178,000	981,000
Rowes Find	-	-	-	-	-	-	148	3.5	17,000	17,000
										30,971,000






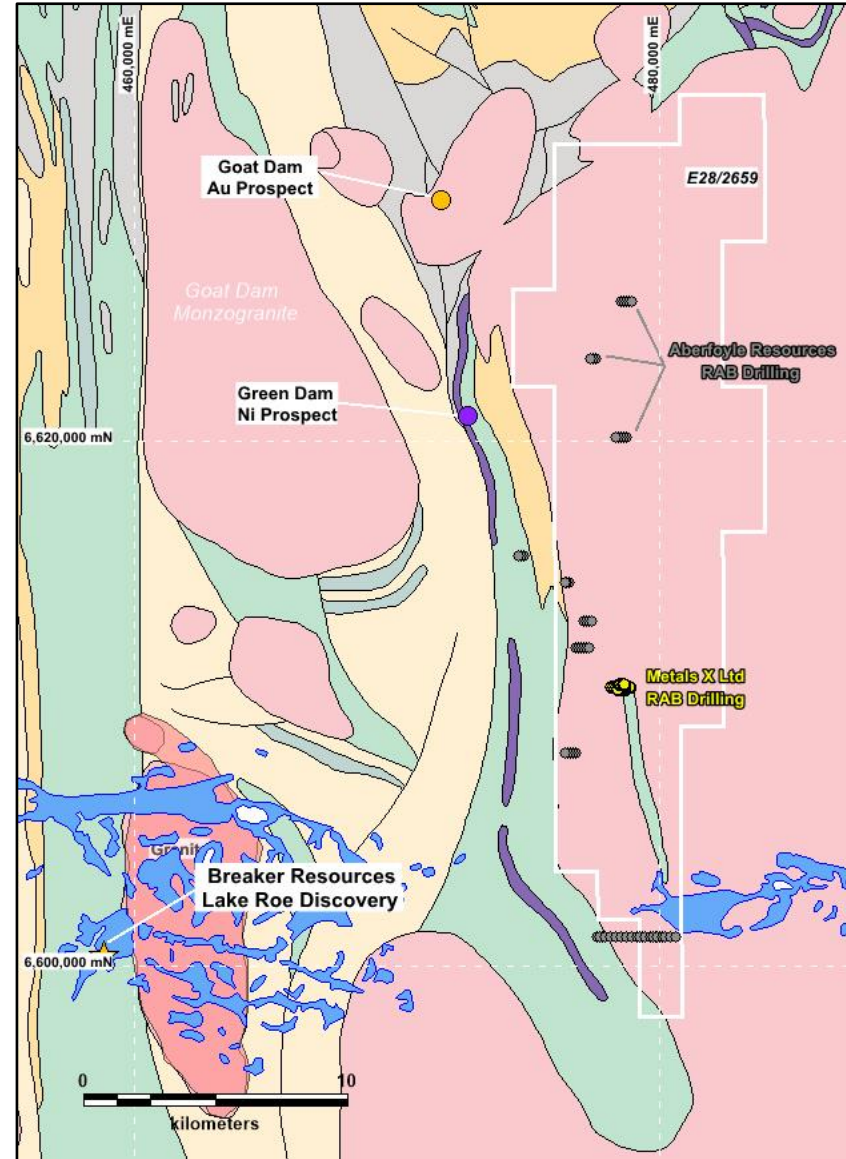
Laverton South Project

- 100% owned Lake Yindana E28/2659
- JV with St Barbara in the Pinjin area (E79 earning to 51% by \$310,000 expenditure, +29% for \$500,000 expenditure)
- Recent + 1Moz discovery at Bombora
- Recent +1Moz discovery at Rebecca / Duchess



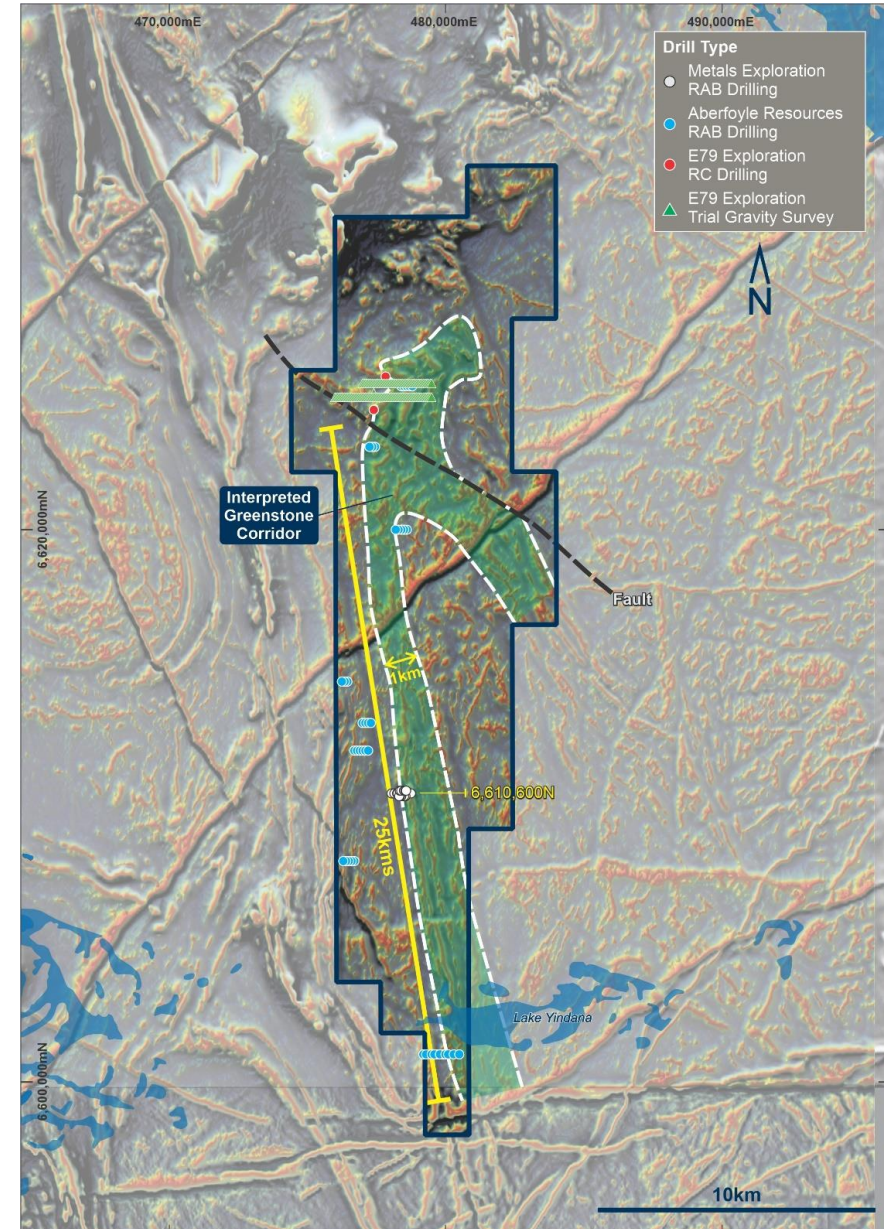
Laverton South Project – Lake Yindana

-  First-mover opportunity
-  GSWA maps show the tenement is less prospective granite (not correct)
-  Discouraged historic exploration – only 65 RAB drill holes, huge areas not explored



Laverton South Project – Lake Yindana

- Magnetics and recently acquired gravity clearly show that the tenement is underlain by ~25km of greenstones
- This is supported by the limited historic RAB drilling finding various lithologies:
 - Dolerite
 - Gabbro
 - Gneiss (Rebecca host)
 - Ultramafic (Ni prospective)
 - Rhyolite porphyry
 - Granite



Laverton South Project – Lake Yindana

Multiple targets



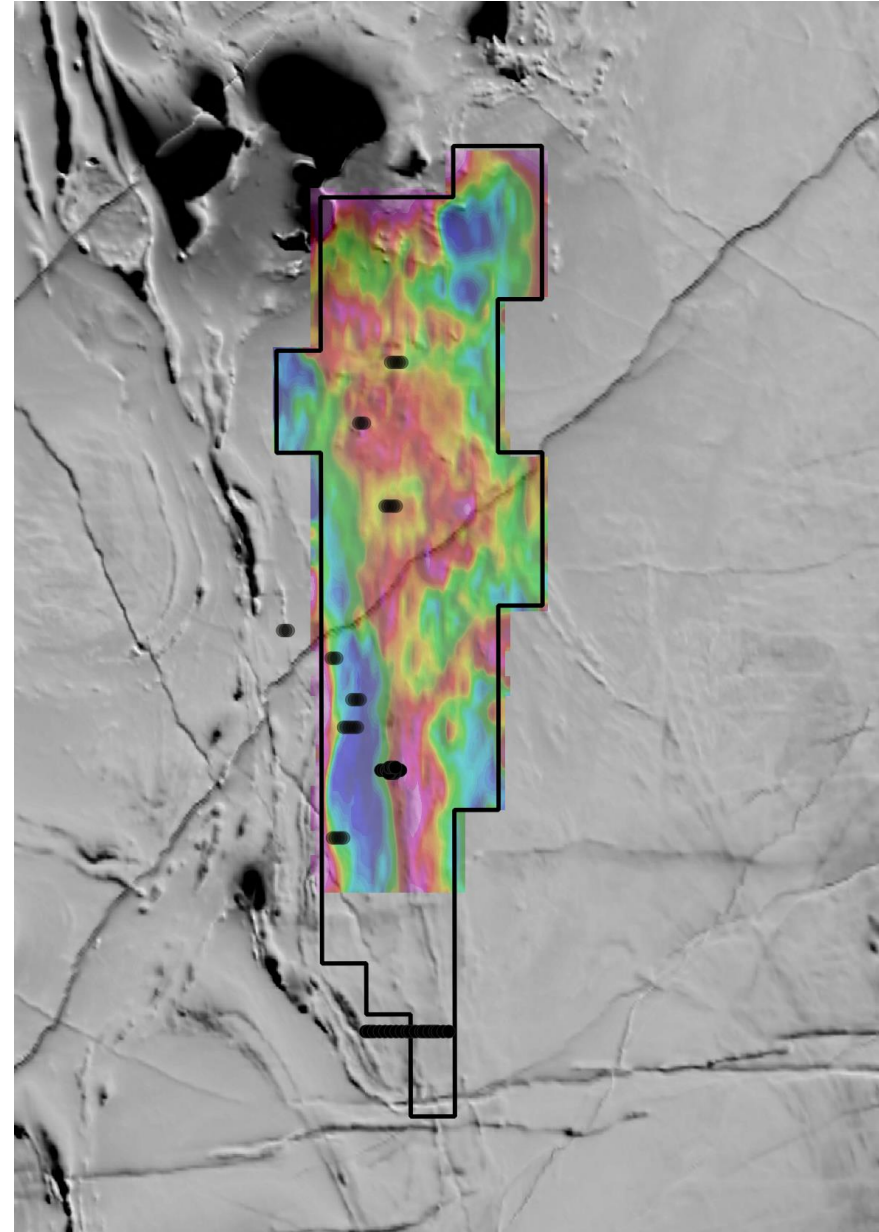
Greenstone

- ~25km long
- underexplored





Potential intrusions

- Identified from the recent gravity
- Intrusion and pressure shadows





Laverton South Project – Lake Yindana

-  Magnetics and gravity clearly show that the tenement is underlain by ~25km of greenstones
-  Given the distinct lack of previous exploration, effectively E79 has a 'first-mover' opportunity:

'...the largest deposits in any particular search space are usually found early because they generally have the most obvious signatures.' And '...the key to exploration success is being the first, or very early, into a new search space'. Dr Jon Hronsky

Laverton South Project - St Barbara JV

-  A series of tenements along strike north and south of the Anglo Saxon (Trouser Legs) Gold Mine, Pinjin Goldfield
-  In conjunction with the Lake Yindana tenement, the tenure controls the north and south strike extensions of the Rebecca / Duchess discoveries



Laverton South Project - St Barbara JV



-  A series of tenements along strike north and south of the Anglo Saxon (Trouser Legs) Gold Mine, Pinjin Goldfield
-  Gold found within Pinjin Shear, on contact between felsic volcanic sediments and intermediate schist

Image: Anglo Saxon open pit

Mineral Resources: 796,000 t at 6.1 g/t Au for 157,000 ounces
(Hawthorn Resources ASX 30/10/2020)



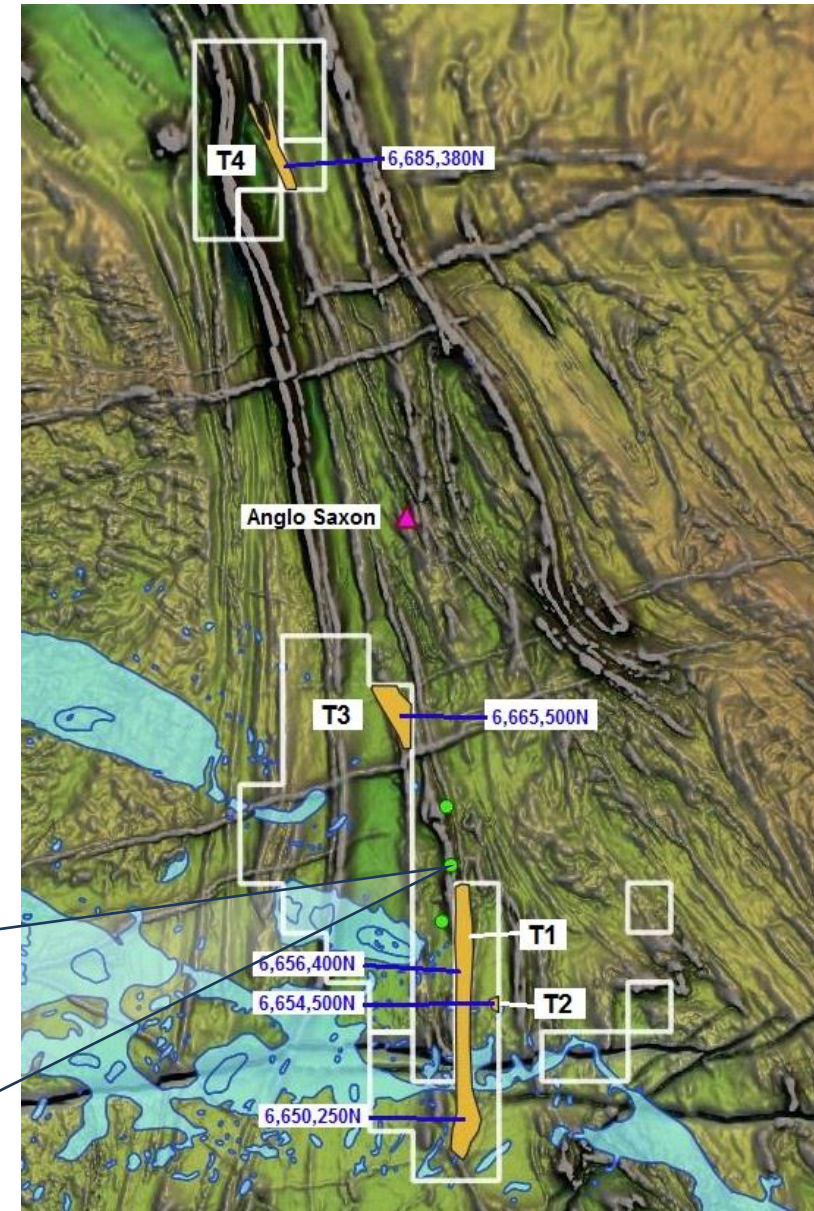
Laverton South Project - St Barbara JV



Targeting completed by St Barbara –
walk-up drill targets including

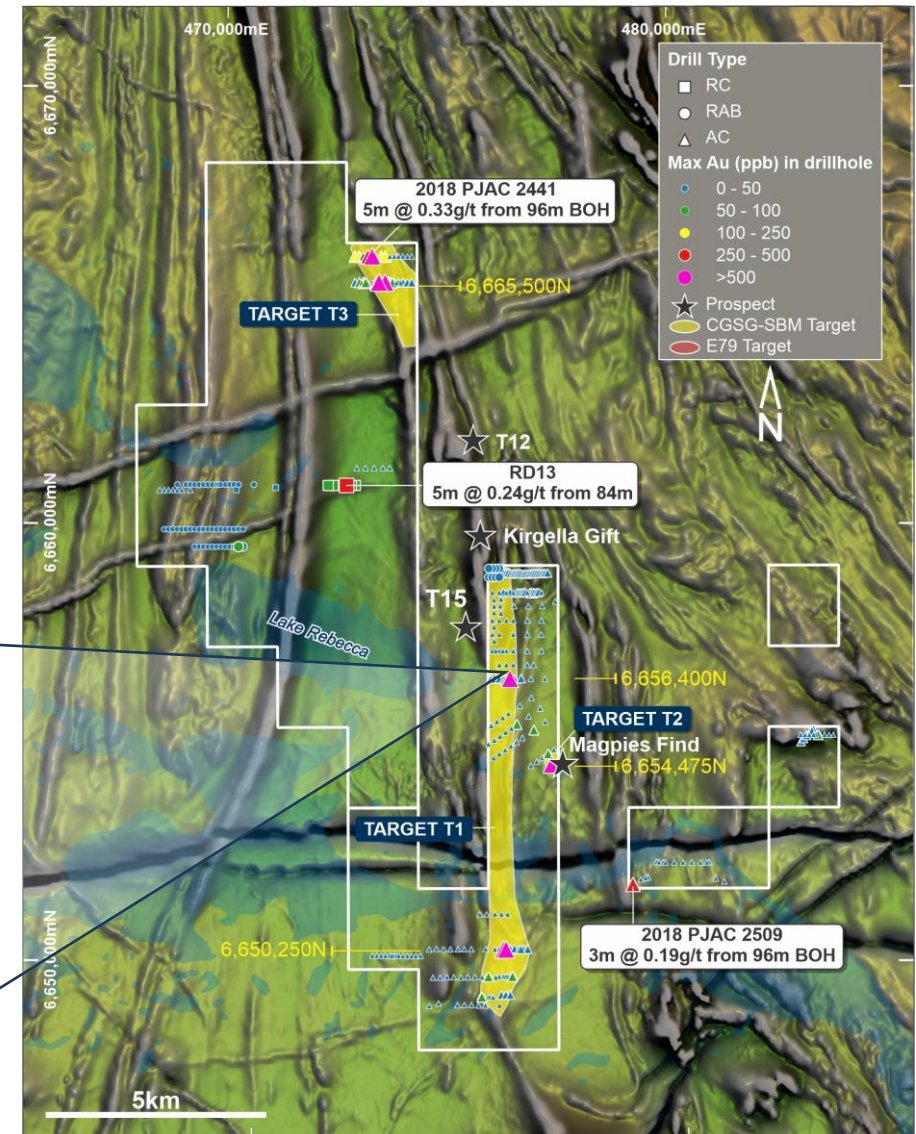
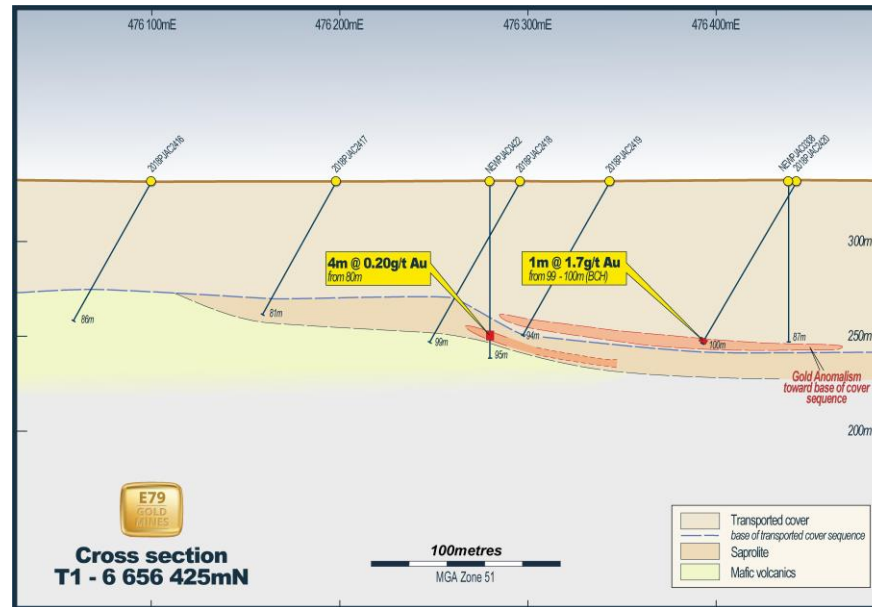
- T1
- T2
- T3
- T4

Kirgella's Gift RC drilling results include:
33m @ 3.10g/t Au from 51m
(Renaissance Minerals Limited, ASX announcement, 11 April 2011)



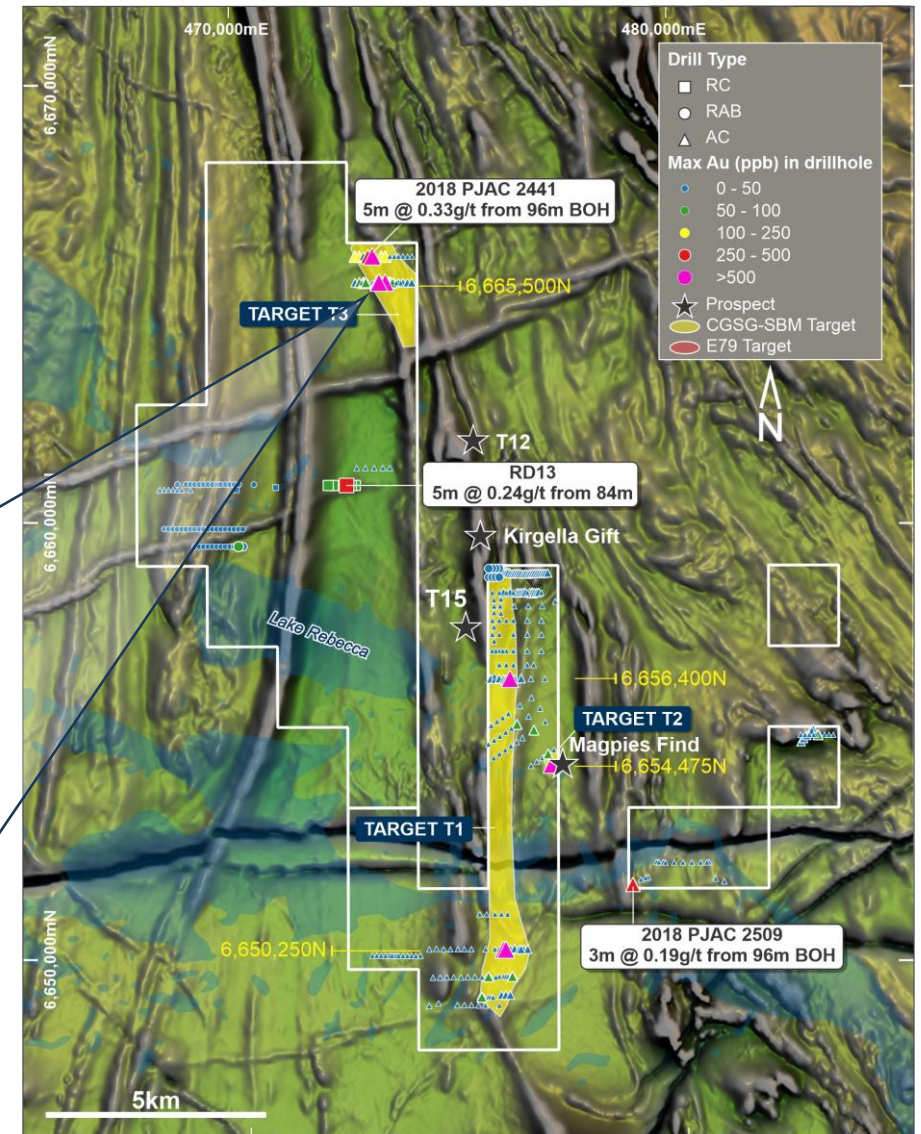
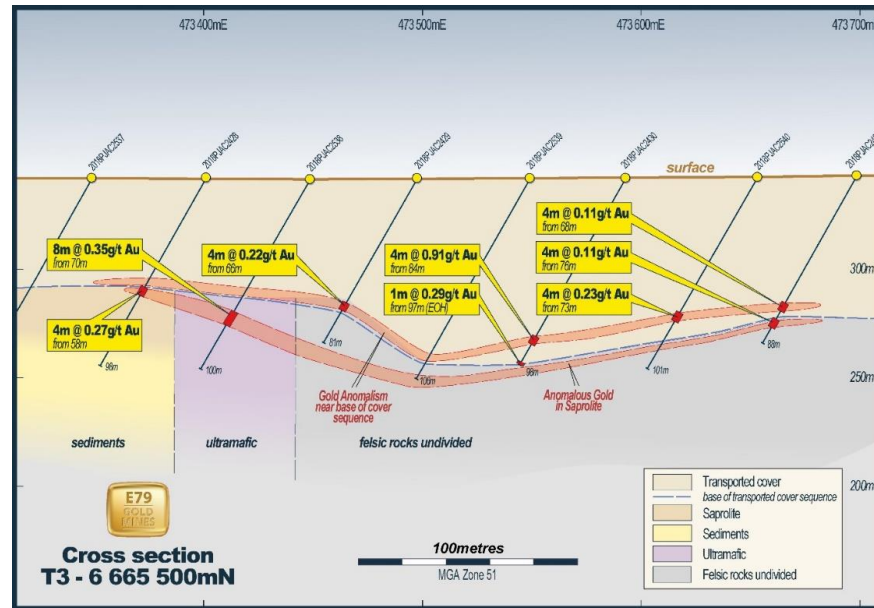
Target 1- St Barbara JV (south tenements)

- 10+ km long stratigraphic target
- Historic drilling shows mineralisation
- Not followed up



Target 3- St Barbara JV (south tenements)

- 600m long, 300m wide zone of anomalous drilling results
- Open to the south
- Not followed up



Target 4- St Barbara JV (north tenements)



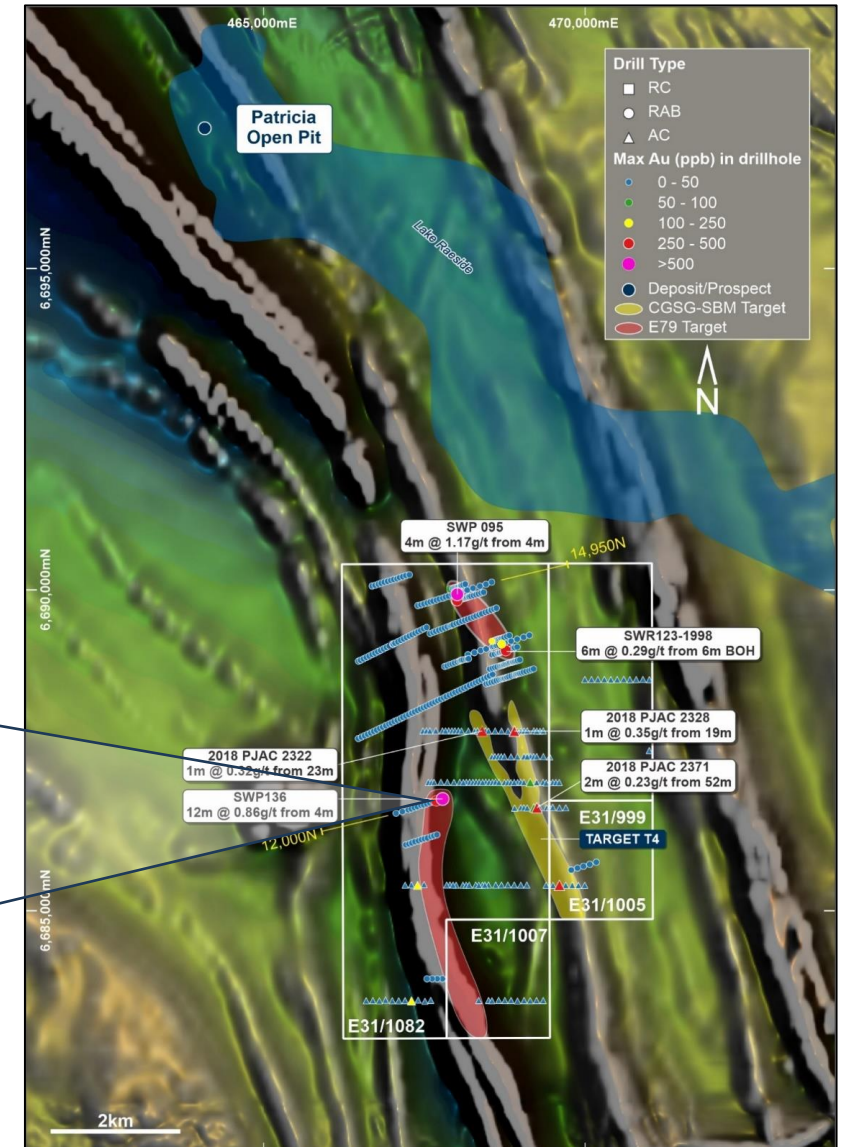
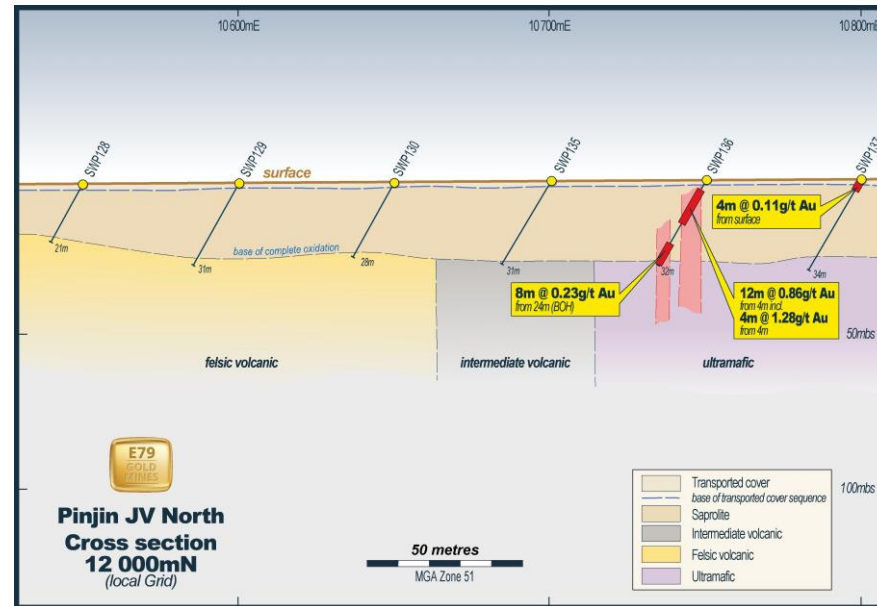
Shallow gold






Mineralised to EOH

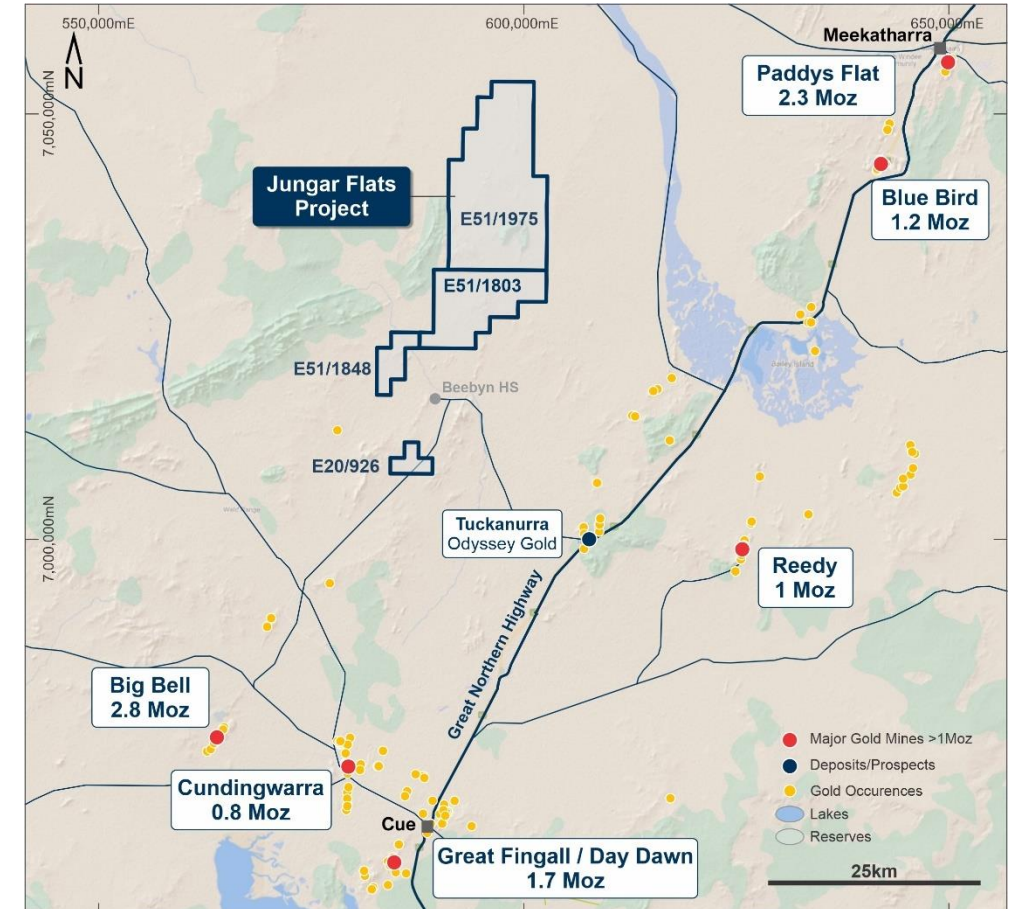


Not followed up



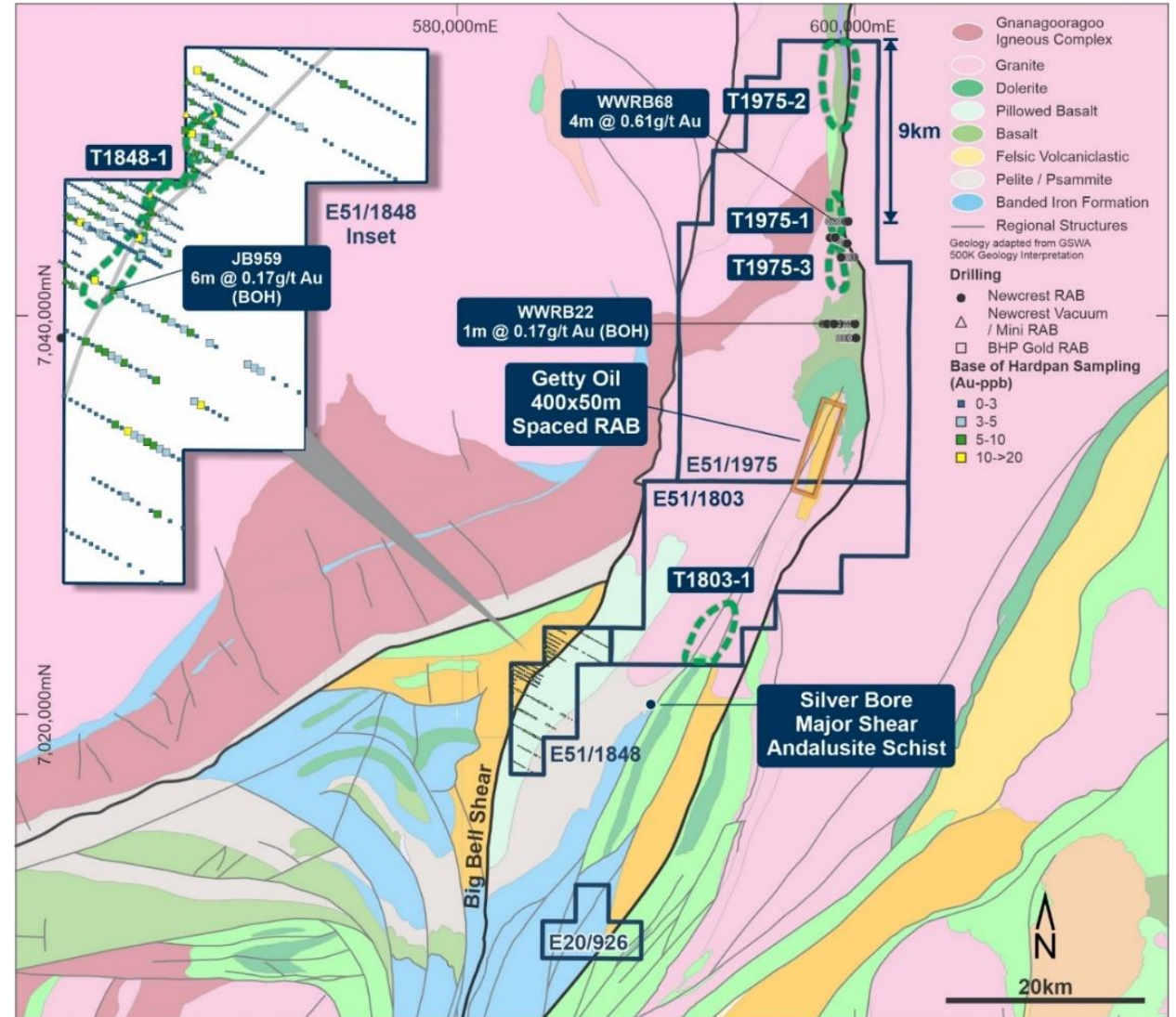
Murchison Project - Jungar Flats

-  337km² of tenure
-  Murchison Goldfields >30 million ounces
-  ~50km of strike along the Big Bell Shear and associated structures



Jungar Flats Project

- Walk-up drill targets include:
 - 6km-long gold anomaly (BHP) – best 6m @ 0.17g/t Au, lack of follow-up
 - T1975-1,2 & 3 (Newcrest) – best 4m @ 0.61g/t Au
- Extensive hardpan cover – most surface geochemistry exploration methods (eg. soil / auger sampling) not effective



The Recipe

- Good management – track record of discovery and successful development
 - 2008 Explorer of the Year (Integra Mining)
 - 2010 Miner of the Year (Integra Mining)
 - 2020 Craig Oliver Award Winner (Stavely Minerals)
- Good ground – two sizeable projects in prolific ‘world-class’ greenstone belts
- Good Strategy – ‘money in the ground’, applied technology in exploration leading to discovery
- Shareholder value – a history of delivering for shareholders



E79 GOLD MINES

Committed to a sustainable future

Thank you

“Money in the ground.”