



HIGH-GRADE GOLD, ANTIMONY & COPPER EXPLORATION PORTFOLIO

**EXPLORING BELT SCALE PROJECTS WITH EVIDENCE
OF HIGH GRADE MULTI-COMMODITY MINERALISATION**

INVESTOR PRESENTATION MAY 2025

ASX:CMO | [COSMOMETALS.COM.AU](https://cosmometals.com.au)

DISCLAIMERS



Purpose of presentation: this presentation has been prepared by Cosmo Metals limited (ACN 653 132 828) (CMO, Cosmo or the company). It is intended for the sole purpose of providing high-level background information on CMO, its projects and its proposed operations. This presentation is not investment advice and should not be relied upon to make any investment decision.

For purposes of this notice, this “presentation” includes this document and any part of it, and any related video or oral presentation, any question and answer session and any written or oral material discussed or distributed during any presentation. By accessing this presentation, you agree to be bound by the following terms and conditions.

Confidentiality and restrictions on distribution: this presentation is confidential. You must not copy or circulate it, in whole or in part, to any other person unless they are within your organisation and directly involved in your consideration of the proposed offer.

No offer or advertisement: this presentation does not constitute an invitation or offer to apply for securities and does not contain any application form for securities. It does not constitute an advertisement for an offer or proposed offer of securities. It is not intended to induce any person to engage in, or refrain from engaging in, any transaction. No person is authorised to give information or make any representation in connection with the offer which is not contained in this presentation. Any information or representation not so contained may not be relied on as being authorised by any relevant person or any other person in connection with the offer. This presentation does not and will not form part of any contract for the acquisition of securities.

Nature of presentation: this presentation is not a prospectus, product disclosure statement or other investment disclosure document, and the level of disclosure in this presentation is less than such disclosure documents. It does not purport to contain all of the information that a prospective investor may require to make an evaluation of CMO or its business activities and nothing in this presentation is, or is intended to be, a recommendation to invest in CMO. CMO does not purport to give financial or investment advice. No account has been taken of the objectives, financial situation or needs of any recipient of this presentation.

Professional advice: recipients of this presentation should consider seeking appropriate professional financial, taxation and legal advice in reviewing the presentation and all other information with respect to CMO and evaluating its business, financial performance and operations.

Forward-looking statements: this presentation contains forward-looking statements which may be predictive in nature and incorporate an element of uncertainty or risk, such as ‘intends’, ‘may’, ‘could’, ‘believes’, ‘estimates’, ‘targets’ or ‘expects’. These statements are based on an evaluation of current economic and operating conditions, as well as assumptions regarding future events. These events are, as at the date of this presentation, expected to take place, but there cannot be any guarantee that such will occur as anticipated, or at all, given that many of the events are outside CMO’s control. The stated events may differ materially from results ultimately achieved. Accordingly, neither CMO nor any of its directors, employees, contractors or advisors make any warranty or assurance that the results, performance or achievements expressed or implied by the forward-looking statements contained in this presentation will actually occur. Further, other than as required by law, CMO may not update or revise any forward-looking statement if events subsequently occur, or information subsequently becomes available that affects the original forward-looking statement.

Disclaimer: neither CMO nor its officers, employees, contractors or advisers make any warranty (express or implied) as to the accuracy, reliability, relevance or completeness of the material contained in this presentation. Nothing contained in this presentation is, or may be relied upon as a promise, representation or warranty, whether as to the past or the future. CMO excludes all warranties that can be excluded by law. Except for statutory liability which cannot be excluded, CMO, its officers, employees, contractors and advisers expressly disclaim any responsibility for the accuracy or completeness of the material contained in this presentation and exclude all liability whatsoever (including in negligence) for any loss or damage which may be suffered by any person as a consequence of any information in this presentation or any error or omission therefrom.

DISCLAIMERS



Proprietary information and copyright: this presentation and the information it contains is proprietary to CMO. CMO holds the copyright in this paper. Except as permitted under the copyright act 1968 (cth), this paper or any part thereof may not be reproduced without its written permission.

Competent Persons Statement: The information in this report that relates to Exploration Results is based upon and fairly represents information compiled by Mr Ian Prentice, a Competent Person who is a Member of the Australasian Institute of Mining and Metallurgy. Mr Prentice is a director of the Company. Mr Prentice has sufficient experience that is relevant to the style of mineralisation and type of deposit under consideration and to the activity being undertaken to qualify as a Competent Person as defined in the 2012 Edition of the 'Australian Code for Reporting of Exploration Results, Mineral Resources and Ore Reserves'. Mr Prentice consents to the inclusion in the report of the matter based on his information in the form and context in which it appears.

Compliance statement: this presentation contains information on the Bingara and Nundle Projects extracted from the ASX market announcement dated 12 February 2025 and reported by the 2012 edition of the "Australasian Code for Reporting of Exploration Results, Mineral Resources and Ore Reserves" (2012 JORC Code) and available for viewing at www.cosmometals.com.au. This news release contains references to historic exploration results on the Bingara and Nundle projects that was not performed by the company. CMO is in the process of validating this exploration in the context of reporting standards for the 2012 JORC code but has included reference to these results in this news release to inform shareholders as an indication of potential grade and widths of mineralisation at the project.

The Company confirms that it is not aware of any new information or data that materially affects the information in the original reports and that the form and context in which the Competent Person's findings are presented have not been materially modified from the original reports (referencing historic and new company announcements).

Cautionary statement: According to Listing Rule 3.1, the Company informs investors that visual estimates of mineral abundance included in this release should never be considered a proxy or substitute for laboratory analysis where concentrations or grades are the factor of principal economic interest. Visual estimates also potentially provide no information regarding impurities or deleterious physical properties relevant to valuations.

Authorised for release by the Managing Director Ian Prentice.



MULTI-COMMODITY AUSTRALIAN EXPLORATION PORTFOLIO



BINGARA PROJECT



NUNDLE PROJECT



GOLD-ANTIMONY & COPPER:

Exploration in proven Australian mineral fields

BELT SCALE LANDHOLDING:

In New England Orogen with 743km² tenure covering over 40km cumulative strike of historic mineral fields

KANOWNA GOLD PROJECT:

On the doorstep of Kalgoorlie, one of the World's premier gold mining districts

TEAM:

In place to implement exploration strategy, providing platform for success

FUNDED:

\$1.57 million entitlement issue completed in March 2025

NSW GOLD, ANTIMONY & COPPER PROJECTS



New England Orogen: hosts some of Australia's leading gold, antimony and copper deposits; includes the Hillgrove gold-antimony deposit (1.7Moz AuEq) and Mt Morgan gold-copper deposit (production of 7.7Moz and 361kt Cu)¹

Belt Scale Landholding: recently acquired projects covering 743km² over 40km cumulative strike of the historic Bingara and Nundle goldfields

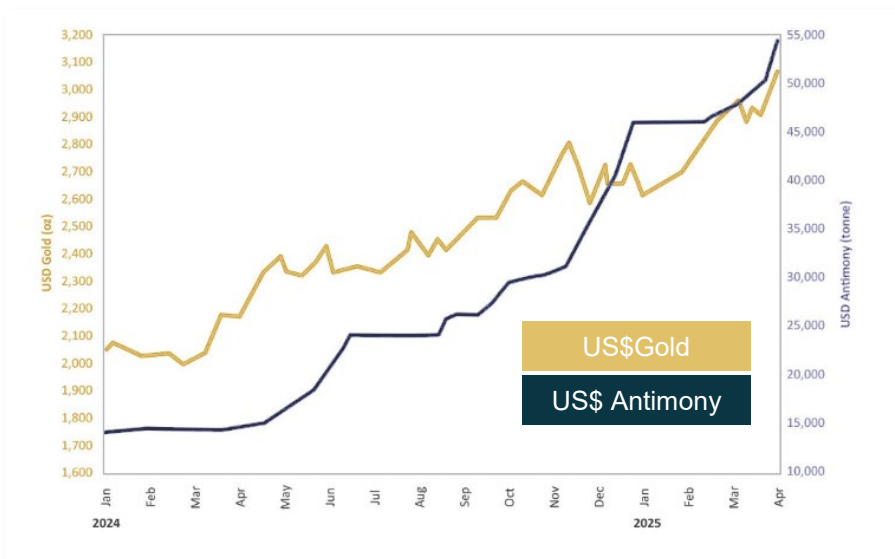
Antimony: Projects cover areas of the highest antimony-gold prospectivity in New England Orogen^{2,3}

1. Refer CMO ASX announcement dated 03/04/2025
2. Refer CMO ASX announcement dated 12/02/2025
3. As mapped by the NSW Mines Department

ANTIMONY (Sb)

A High-Value Critical Mineral Beset by Supply Challenges

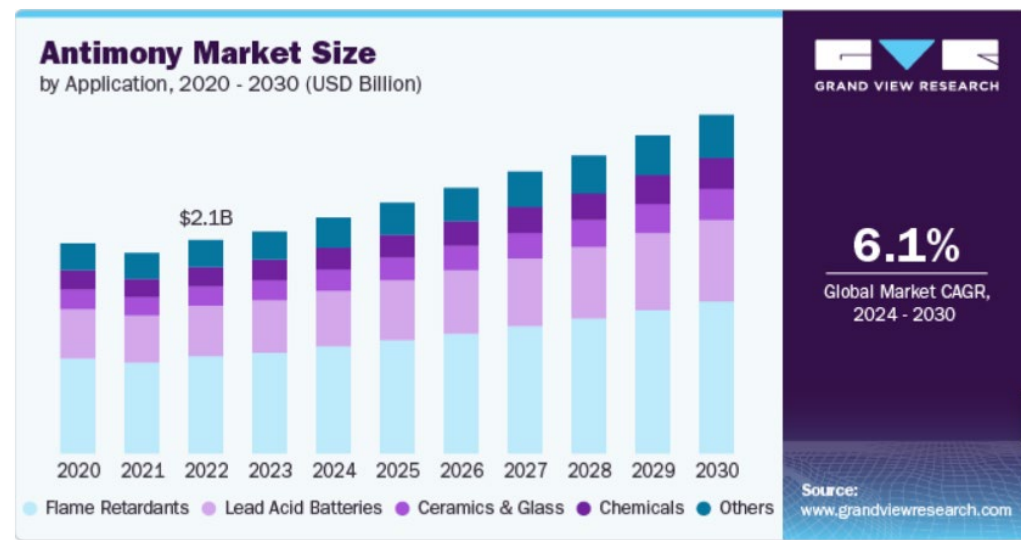
Antimony/Gold Price – 15 months



Supply Constrained by Trade Tensions

- China is the largest producer of antimony globally but is also the largest consumer
- China is a net importer of Sb ore and has restricted exports
- The USA produces ZERO antimony

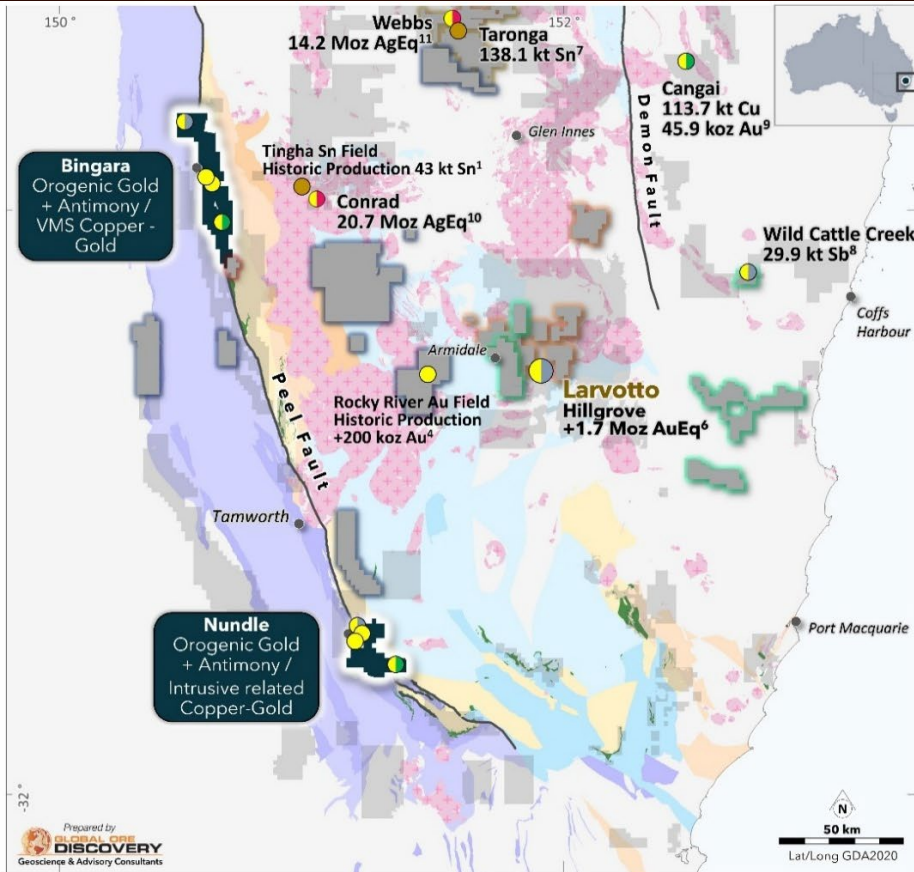
Antimony Market Size



Antimony is highly sought after for industrial uses in:

- Defence technologies
- High-tech semi-conductor
- Fire retardant products
- Batteries (both lead acid & lithium-ion)

NSW PROJECTS – BINGARA & NUNDLE



Southern New England Orogen: Highly mineralised with a diverse range of commodities – deposits of gold-(antimony), silver, copper, tin – but remains largely underexplored

Proven Mineralisation at Bingara & Nundle: Historic mining and shallow drilling confirm widespread mineralisation to follow up¹:

- 6.0m at 6.43 g/t Au from 8.0m
 - incl 2.0 m at 17.6 g/t Au from 12.0m
- 8.0m at 2.83 g/t Au from 1.0m

Limited Past Exploration: Sporadic exploration across the projects since 1970's with no drilling in ~30 years and minimal modern exploration

Cosmo Exploration Underway: Activities have commenced across Bingara & Nundle with an active exploration strategy being implemented

1. Refer CMO ASX announcement dated 12/02/2025

BINGARA

High-grade historical gold mining and drilling provide walk-up targets

~484km² covering sub parallel mineralised trends with historical mining of high-grade gold and copper from surface

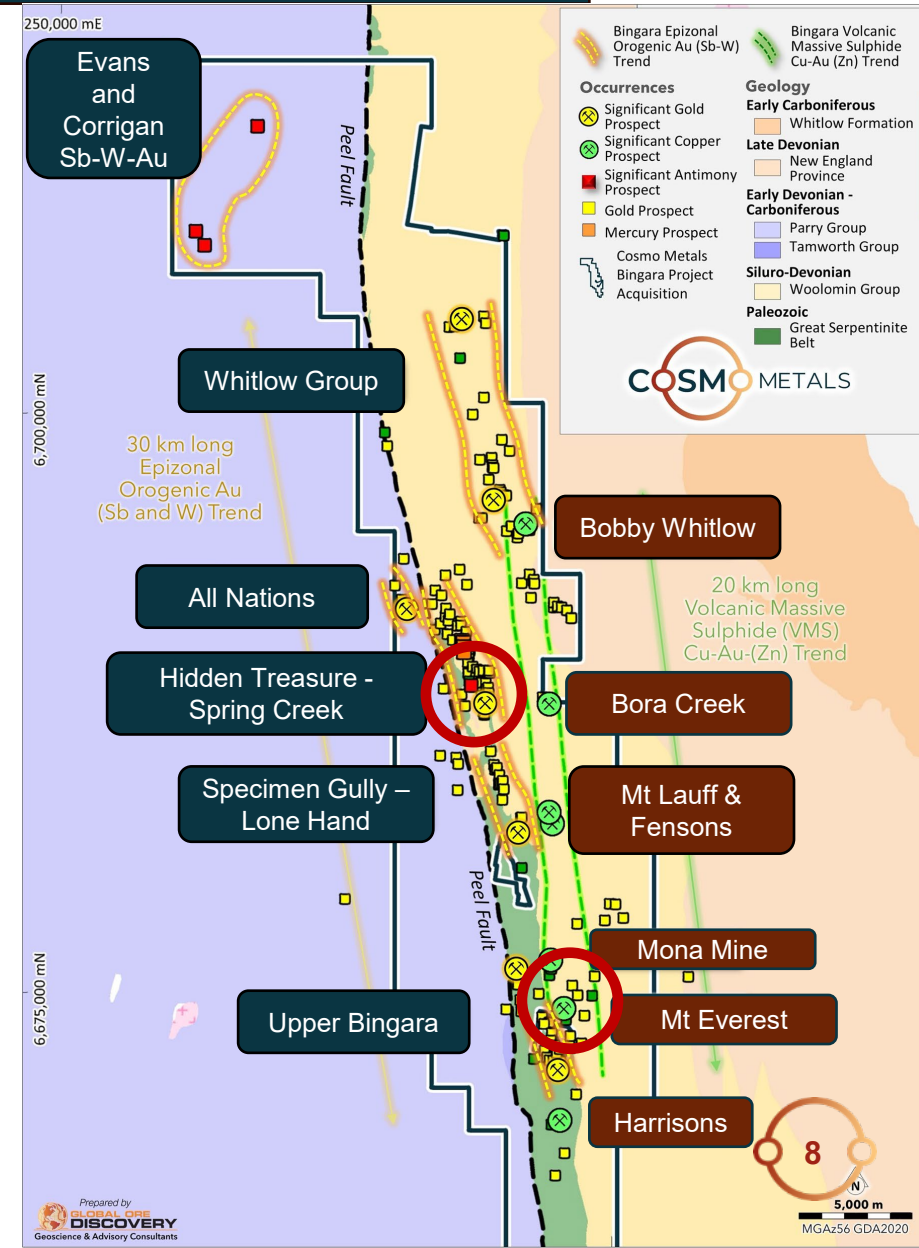
- **Gold-antimony:** +30km long orogenic gold trend hosts the Bingara goldfield – mined for Au & Sb during 1850's & 1860's
- **VMS copper-gold-zinc:** 20km-long VMS trend contains 6 historical Cu-Au mines

No drilling in ~30 years and minimal modern exploration

Five significant gold trends along the Bingara goldfields including the drill ready Spring Creek prospect

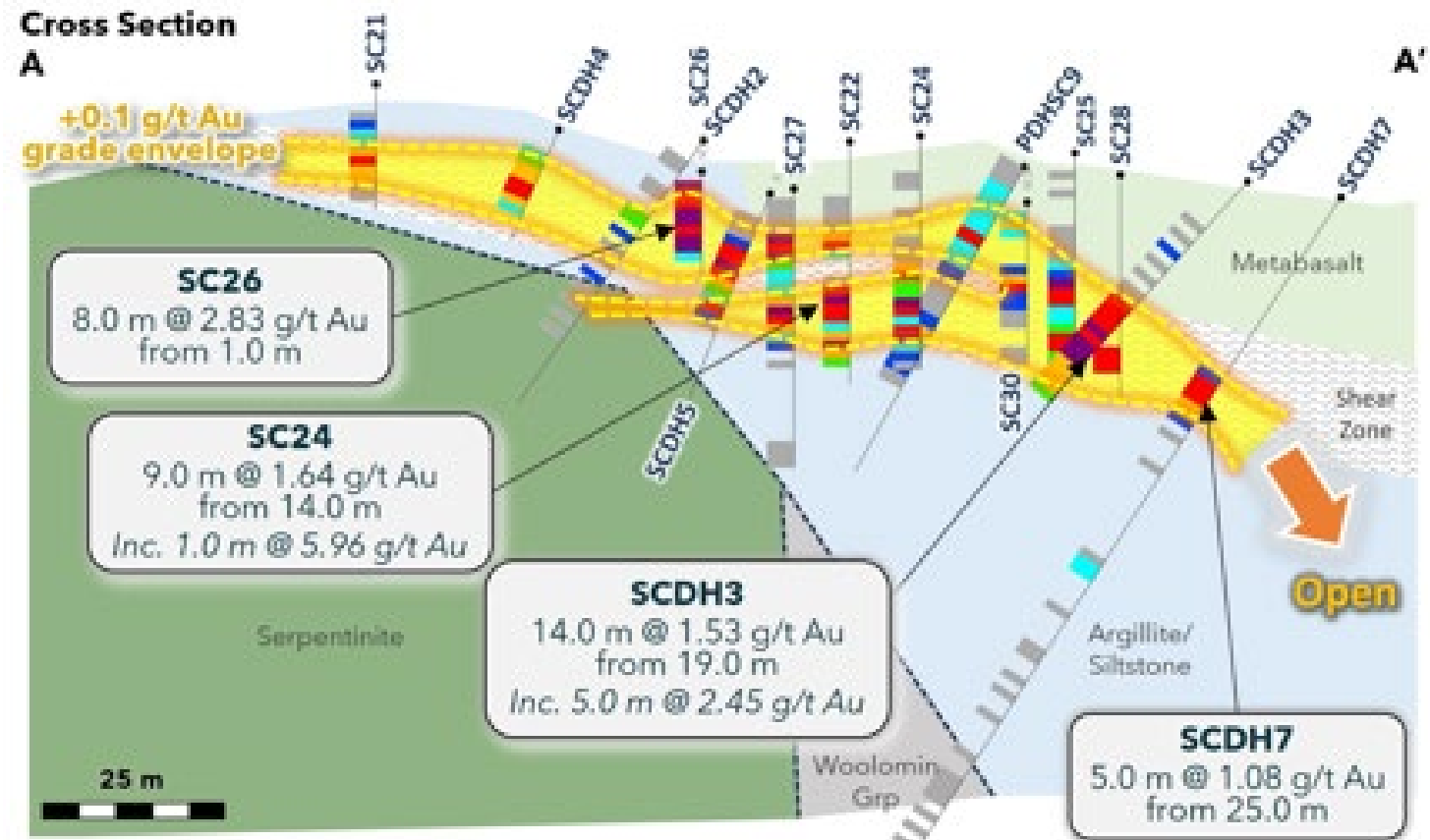
VMS trend includes Mt Everest area; 2.5km long belt of copper occurrences, pits & mines

Exploration has commenced with SAM survey completed over the Mt Everest area and a whole of project LiDAR survey underway



BINGARA – SPRING CREEK

Walk-up confirmation and extensional drill targets



BINGARA – SPRING CREEK

Walk-up confirmation and extensional drill targets

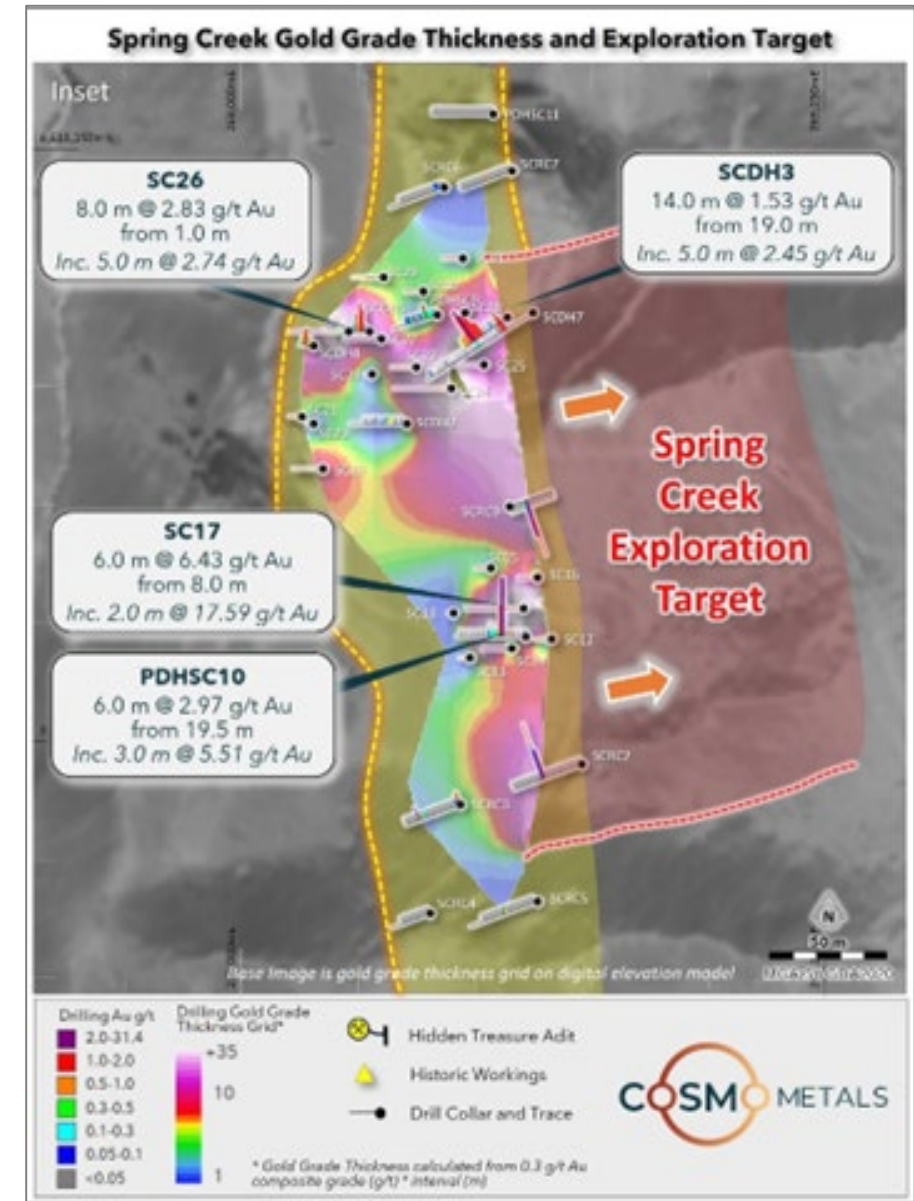
Shallow drilling has produced high-grade gold intercepts that remain open¹:

- 6.0m at 6.43 g/t Au from 8.0m (SC17)
incl. 2.0m at 17.6 g/t Au from 12.0m
- 8.0m at 2.83 g/t Au from 1.0m (SC26)
- 6.0m at 2.97 g/t Au from 19.5m (PDHSC10)
incl 3.0m at 5.51 g/t Au from 19.5m
- 14.0m at 1.53 g/t Au from 19.0m (SCDH3)
incl 5.0m at 2.45 g/t Au from 23m

Cosmo progressing drill hole planning and permitting at Spring Creek

1. Refer CMO ASX announcement dated 12/02/2025

ASX: CMO



BINGARA – MT EVEREST

Sub Audio Magnetotelluric (SAM) survey completed

Mt Everest trend 2.5km long belt of copper occurrences, pits & mines

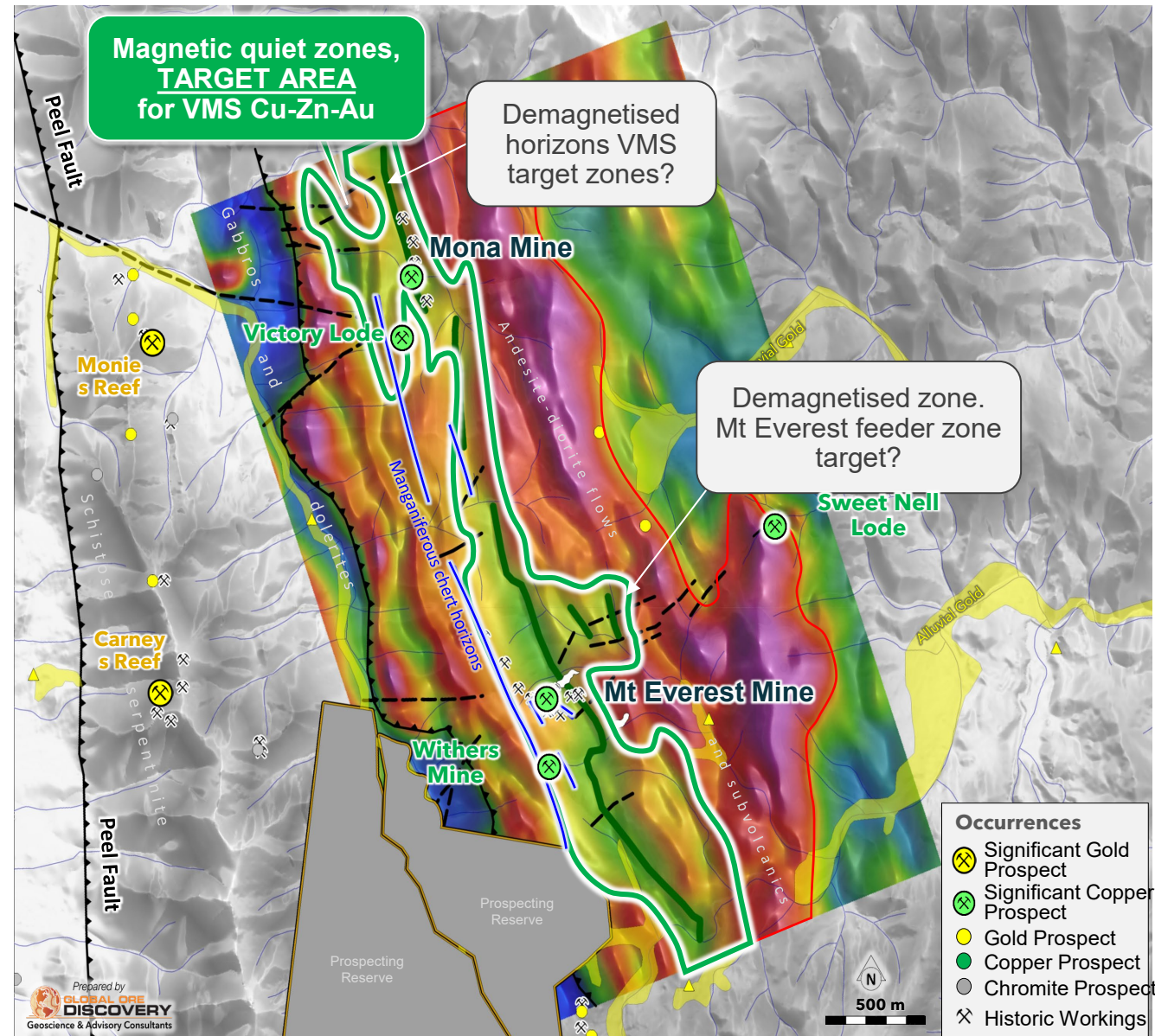
- Samples from Mt Everest workings returned¹:
 - **18.6% Cu** from the supergene zone with malachite and copper oxides
 - **9.8% Cu** from magnetite-pyrite-chalcopyrite layered rock

SAM survey mapped magnetic anomalies that may represent concealed massive sulphide targets along strike of historic workings

Mapping and surface sampling follow up planned

One of 6 known historic VMS occurrences

1. Refer CMO ASX announcement dated 12/02/2025



BINGARA – MT EVEREST TO FENSONS

10km strike of untested VMS mineral potential



Fensons old mine workings, malachite in metabasalt and banded pyrite-chalcopyrite layers in altered mafic¹



Mt Everest: open cut workings, copper bearing haematitic gossan and copper smelter site¹

The Company cautions that visual estimates of mineral abundance should never be considered a proxy or substitute for laboratory analysis where concentrations or grades are the factor of principal economic interest. Visual estimates also potentially provide no information regarding impurities or deleterious physical properties relevant to valuations. The presence of various quartz veining with associated alteration and structure can be considered a geological pathfinder at the Folly Line but does not necessarily indicate the presence of gold mineralisation. Laboratory chemical assays are required to determine the grade of mineralisation.

1. Refer CMO ASX announcement dated 11/03/2025

NUNdle

Significantly underexplored with negligible use of modern exploration methods

Covers the regional scale Peel Fault; two key target areas:

- **Gold–antimony trend:** 7.5km-long section of the Nundle goldfield – historic mining (1849-1940's) generated at least 150,000oz Au¹
- **Copper–Gold:** The Barnard Hut – Back Barb cluster prospective for intrusion related copper; evidence of mineralisation over +3km area

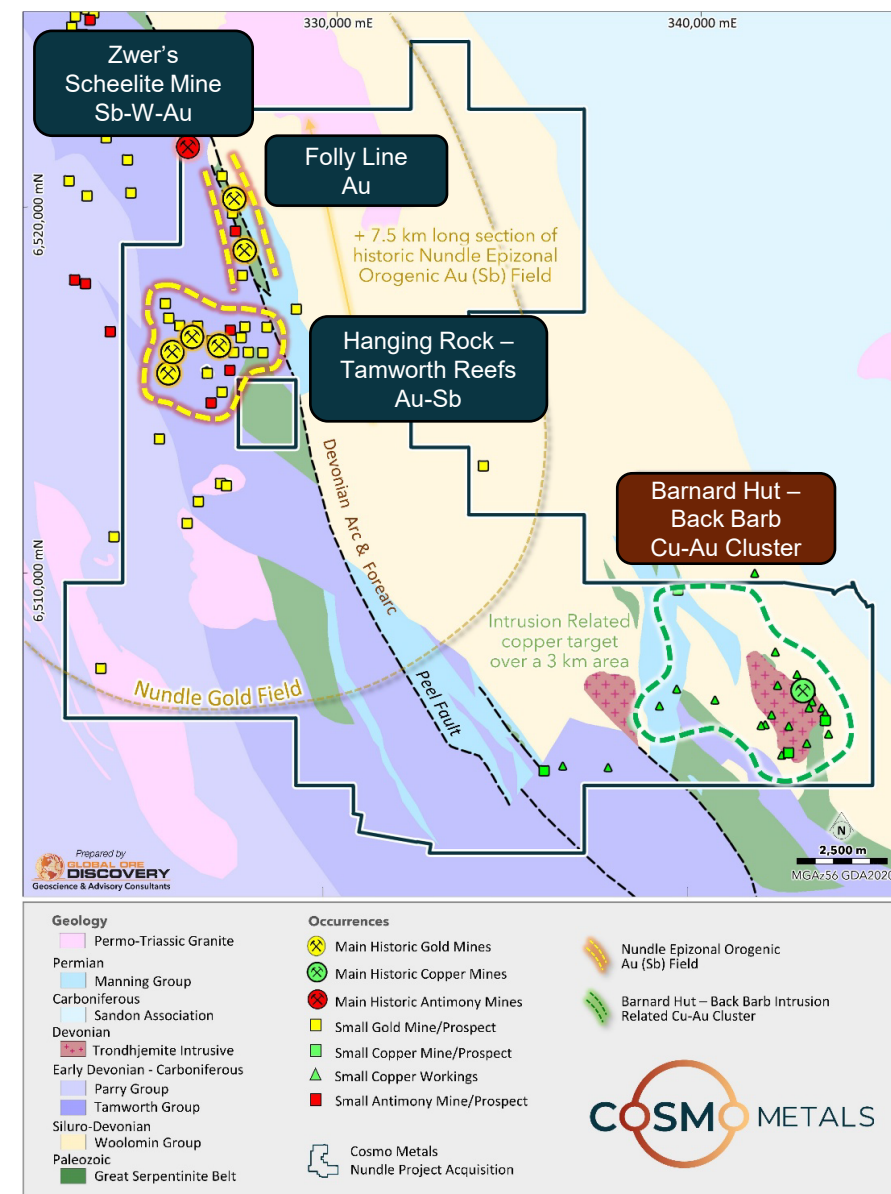
Largely unexplored with last drilling occurring ~30 years ago

Significant antimony prospectivity including the Zwiers Scheelite Mine which has produced +4.3t of stibnite (~3.0t antimony)

Barnard Hut and Back Barb Intrusive Related "Mt Morgan Style" Copper Prospects

Exploration has commenced with whole of project LiDAR survey underway

1. Refer CMO ASX announcement dated 12/02/2025



NUNBLE – FOLLY LINE

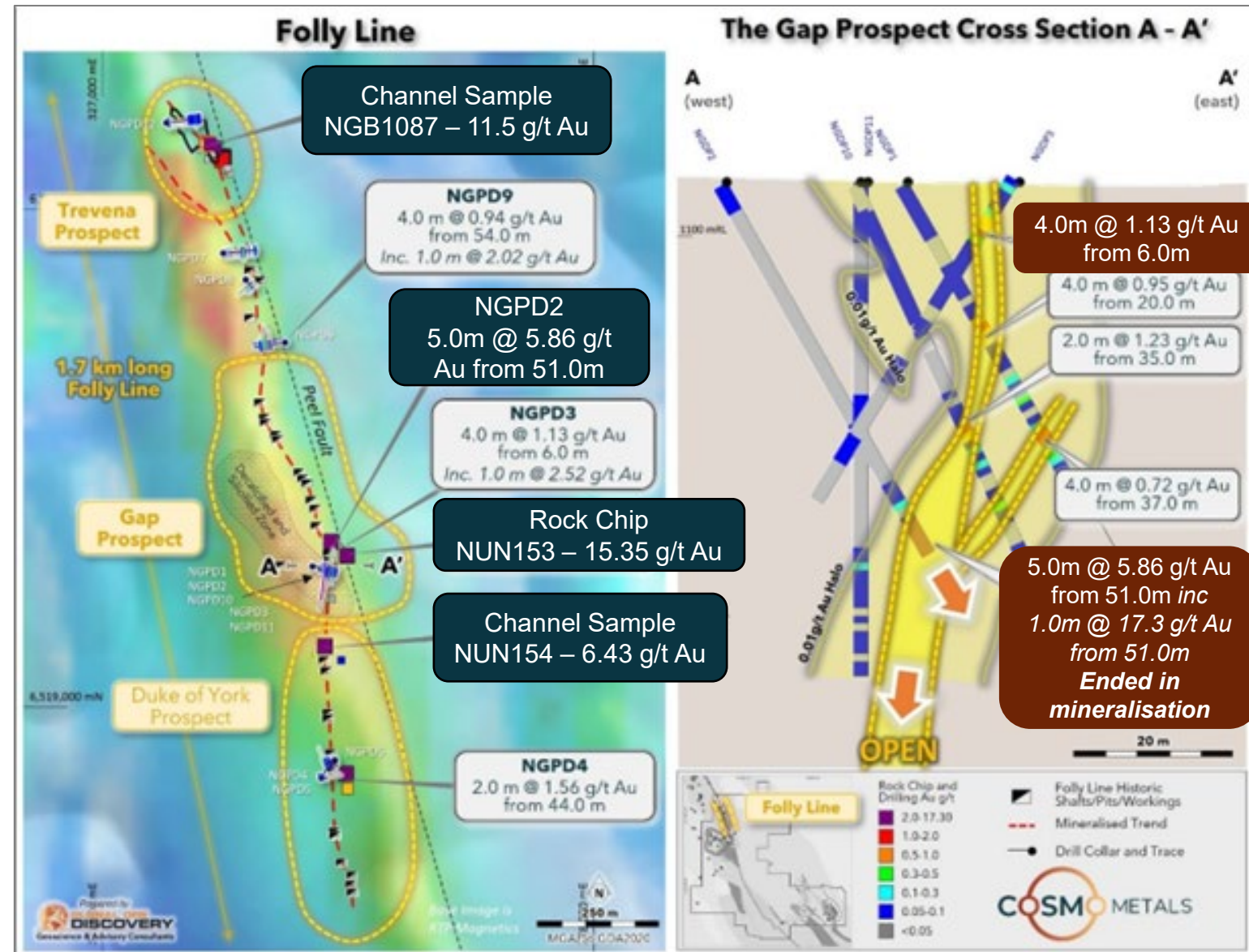
1.7km-long underexplored Folly Line presents shallow high-grade gold targets

Limited shallow drilling in 1996-97 produced, high-grade gold results that remain open¹:

- 5.0m at 5.86 g/t Au from 51m (NGPD2) incl 1.0m at 17.3 g/t Au from 51m
- No follow up drilling – open along strike and down dip
- Trevena channel samples returned **up to 11.5g/t Au** within a +350m long section

Recent logging of pine plantation has exposed ground unseen in decades

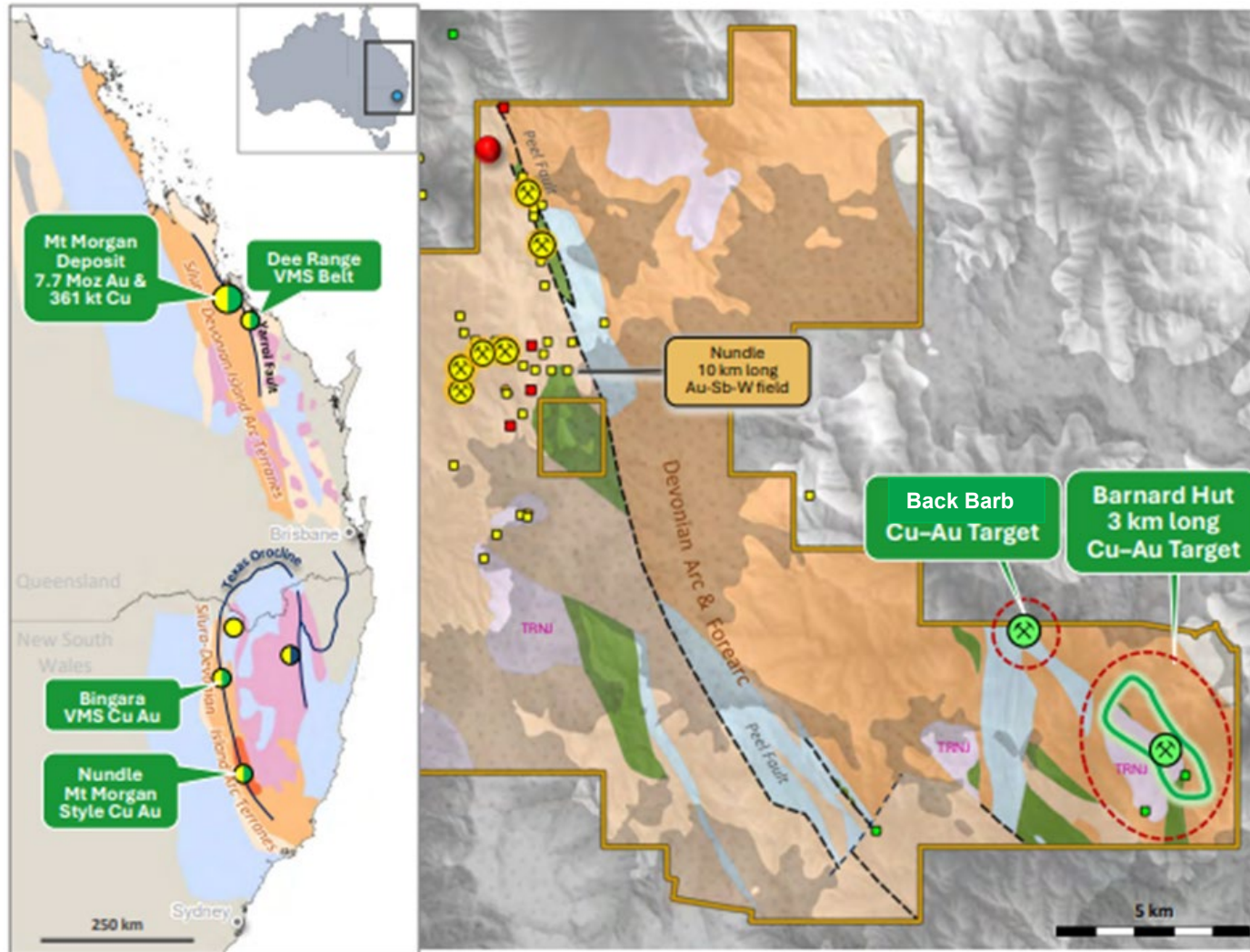
Planning for geological mapping and surface sampling to refine drill targets



1. Refer CMO ASX announcement dated 12/02/2025

NUNDLE – MT MORGAN STYLE CU - AU TARGETS

Barnard Hut and Back Barb intrusion related copper – gold systems



Potential for island arc intrusion related Mt Morgan style porphyry copper-gold

Multi kilometre long copper anomalies associated with Devonian age Trondhjemite intrusive

Mineralisation associated with veins and veinlets of mal-cpy-brn hosted in strongly sericite altered intrusive and wall rocks



NUNDELE – BARNARD HUT / BACK BARB

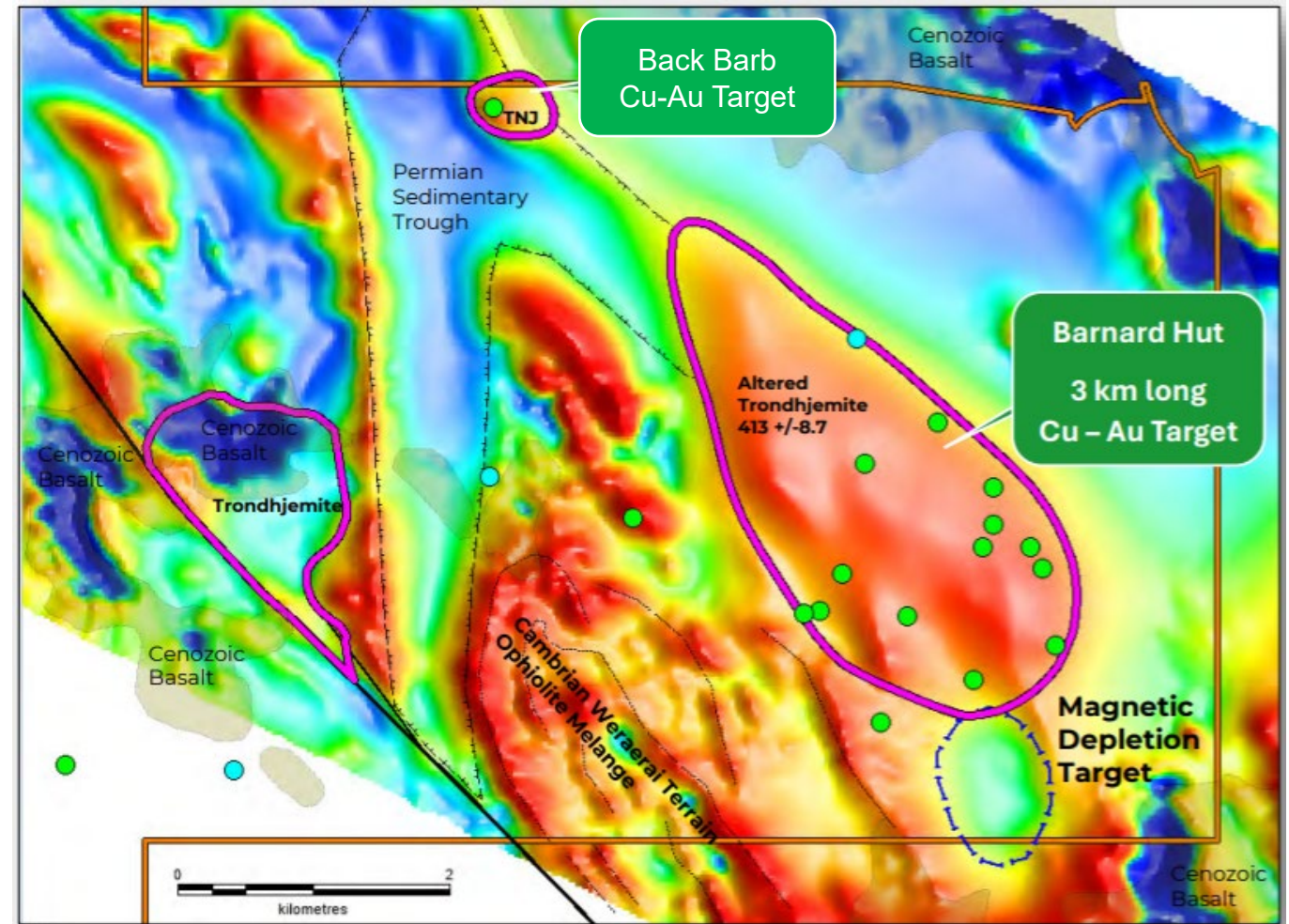
Mt Morgan style island arc intrusion related copper – gold targets

Exploration completed in 1971 – 376 consecutive samples¹ from costeans targeting exposed zones of copper mineralisation

“Strong traces of copper mineralisation along a strike of approx. 2 miles (3.2 km)”, including:

Malachite, chalcopyrite and bornite with specular hematite associated with 4.2 km by 1.6 km magnetic high

Cosmo site visit confirmed evidence of copper mineralisation in northern portion²



1. Refer CMO ASX announcement dated 12/02/2025

2. Refer CMO ASX announcement dated 11/03/2025

NUNDLE – BARNARD HUT / BACK BARB

Mt Morgan style island arc intrusion related copper – gold targets



Historical trench northern portion of Barnard Hut looking west; malachite with tenorite and jarosite in hand specimen from trench¹



Back Barb – malachite in sheared ultramafic outcrop; 10cm wide vein with secondary chalcocite and relic primary chalcopyrite¹

1. Refer CMO ASX announcement dated 11/03/2025

The Company cautions that visual estimates of mineral abundance should never be considered a proxy or substitute for laboratory analysis where concentrations or grades are the factor of principal economic interest. Visual estimates also potentially provide no information regarding impurities or deleterious physical properties relevant to valuations. The presence of various quartz veining with associated alteration and structure can be considered a geological pathfinder at the Folly Line but does not necessarily indicate the presence of gold mineralisation. Laboratory chemical assays are required to determine the grade of mineralisation.

KANOWNNA GOLD PROJECT

Located in the shadow of the Kalgoorlie Super Pit

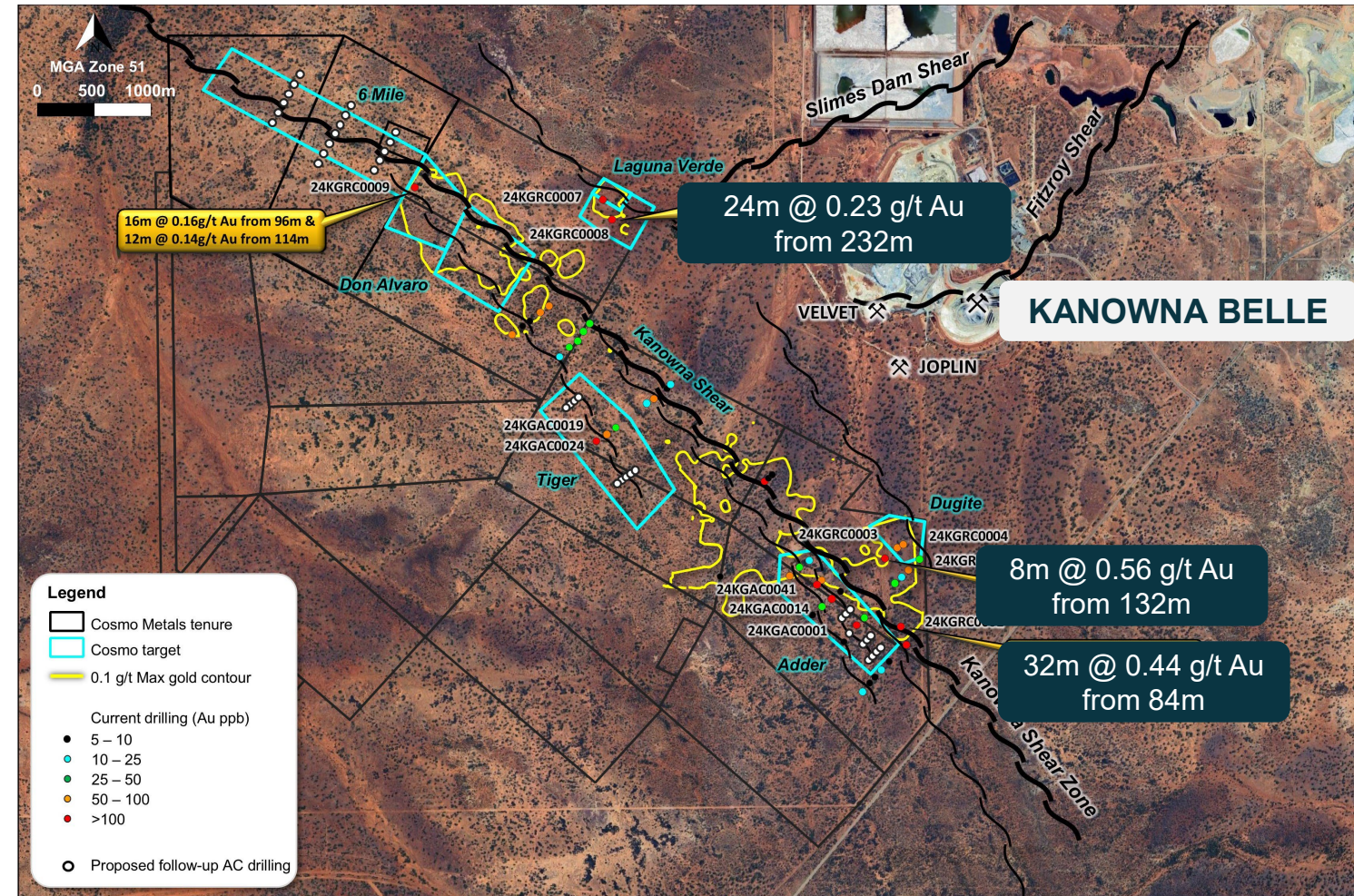
Located 13km by road from Kalgoorlie, adjacent to Kanowna Belle Gold Mine

- Contains >8 km of Kanowna Shear Zone and splay faults, incl the Fitzroy Fault

Cosmo first phase drilling program of 4,915m across 51 holes returned broad zones of anomalous mineralisation¹:

- 32m at 0.44g/t Au from 116m (24KGRC01)
- 24m at 0.23g/t from 232m (24KGRC08)

Using new data to enhance the geological understanding in support of targeting follow up drilling



1. Refer CMO ASX announcement dated 30/10/2024

ESTIMATED FORWARD WORK PROGRAMS

Strong News Flow & Value Catalysts



* *Indicative timetable*

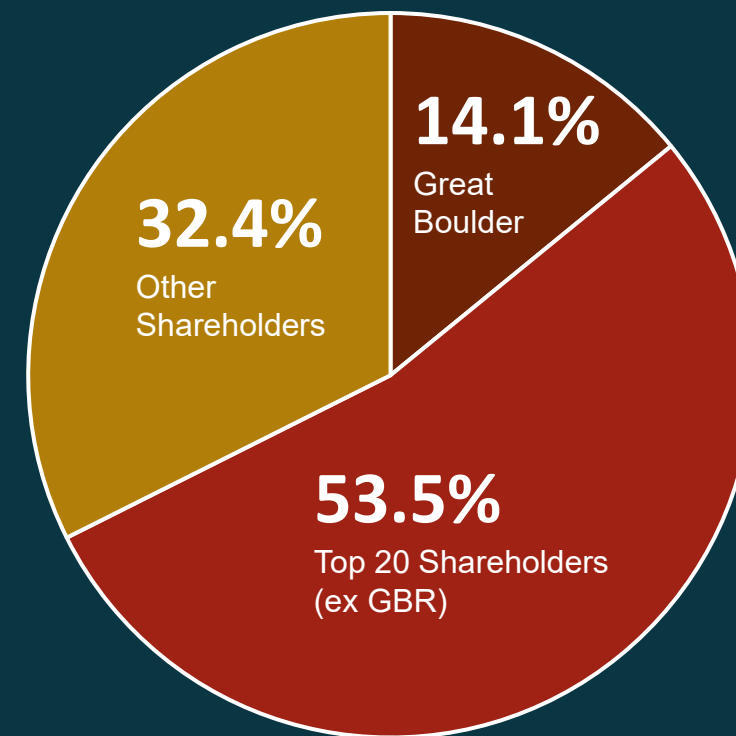
ASX:CMO

CAPITAL STRUCTURE

Tight capital structure & supportive shareholder base, compelling leverage

Shares on Issue	322,135,629
Milestone Performance Shares ¹	96,666,667
Performance Rights	13,000,000
Options on Issue, including	156,097,152
Unlisted \$0.015 exercise, 3 April 2028 expiry	48,215,054
Unlisted \$0.03 exercise, 27 March 2028 expiry	56,397,230
Listed \$0.06 exercise, 31 March 2027 expiry	39,131,535
Cash, as at 31 March 2025	\$1.23 M
Market Cap (5 May 2025)	\$5.48 M

1. Milestone Performance Shares linked to acquisition of NSW Projects



IAN PRENTICE

Managing Director
Geologist / Project Development



PETER BIRD

Non-Executive Chairman
Geologist / Capital Markets



ANDREW PATERSON

Non-Executive Director
Geologist



RANKO MATIĆ

Non-Executive Director
Corporate/ Accountant

HIGH-GRADE GOLD, ANTIMONY, COPPER PORTFOLIO

Belt-Scale Multi-Commodity Exploration Tenure



HIGH GRADE HISTORICAL MINING & EXPLORATION

Substantial workings and historic exploration confirm high grade gold, antimony & copper potential across ~743km² NSW package



AREAS OF HIGHEST ANTIMONY PROSPECTIVITY IN NEW ENGLAND OROGEN

Comparable geological setting to that of ASX success story Larvotto Resources (ASX: LVR) Hillgrove Deposit



WALK UP TARGETS AND PROSPECTS

Several compelling prospects based on historical data & initial reconnaissance. Drilling targeted to commence mid CY25



NEGLIGIBLE MODERN EXPLORATION

The New England Orogen in NSW is Australia's "forgotten" mining district despite extensive mining history. Bingara and Nundle are very underexplored



MULTI-COMMODITY POTENTIAL IN BELT-SCALE PROJECTS

Across large land holdings, Cosmo will explore for gold, antimony and copper



ATTRACTIVE RERATE POTENTIAL & LEVERAGE TO EXPLORATION SUCCESS

Supportive shareholder base - Top 20 own ~68%, Active exploration strategy = News flow



CONTACT

Ian Prentice

Managing Director

Cosmo Metals

T: +61 8 6400 5301

E: ian@cosmometals.com.au