

UNITH interFace webinar

ASX: UNT
September 2024

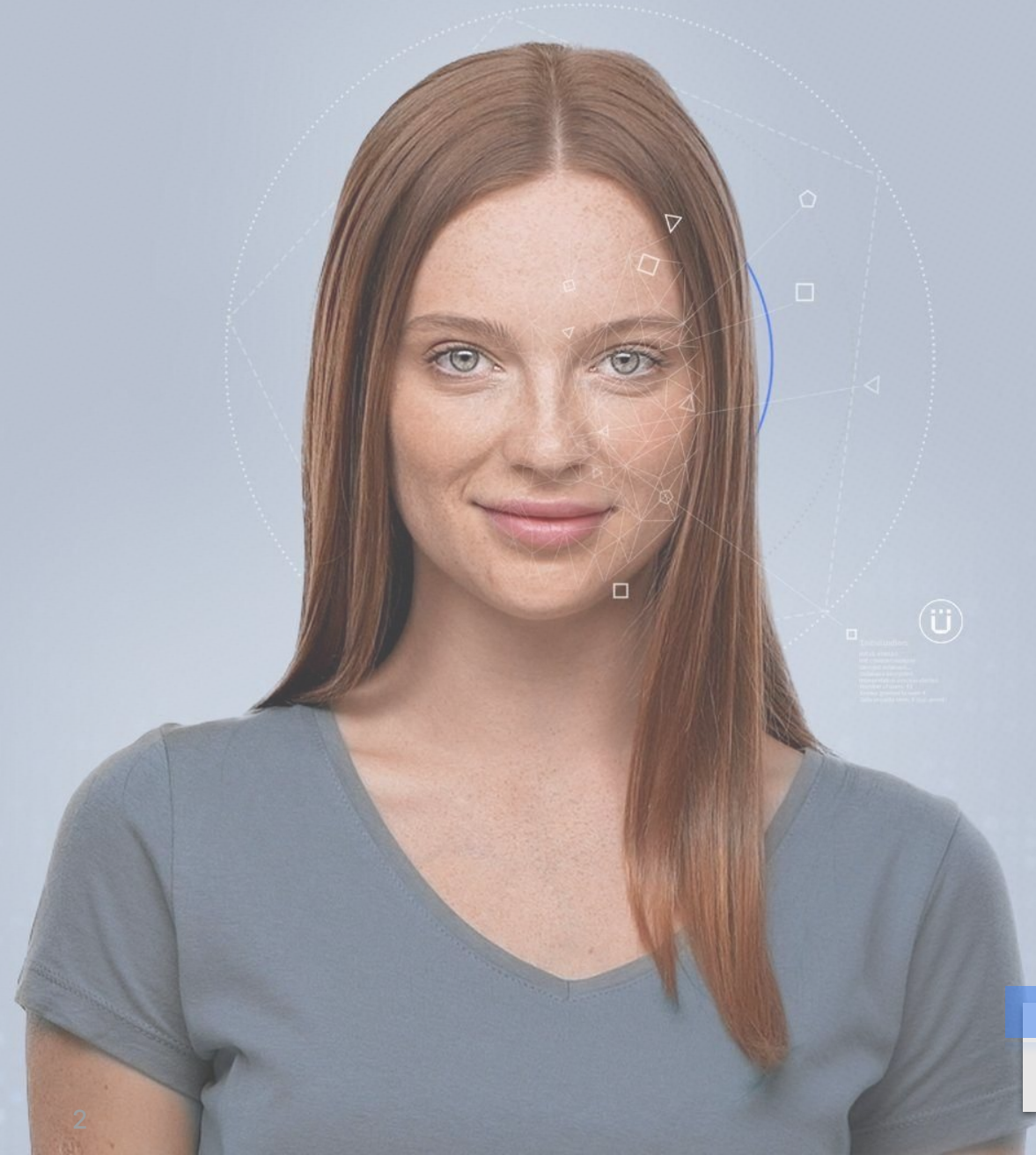
*Reinventing the way businesses
engage with their audiences*



ÜNITH

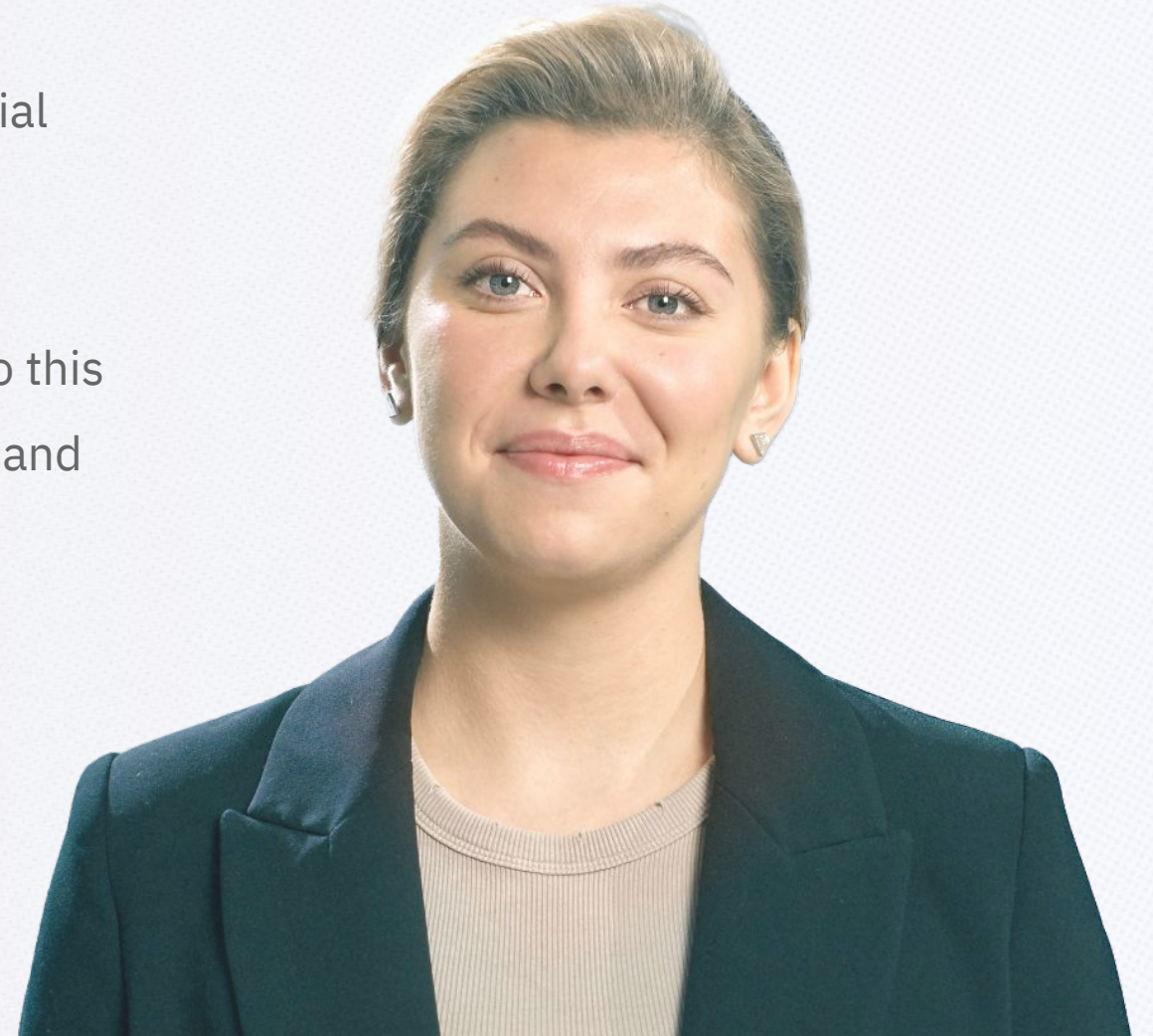
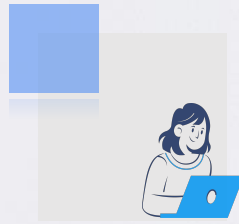
Agenda

- Digital Humans overview
- **interFace demonstration**
- Q&A



We are hard-wired for face-to-face.

One-to-one and face-to-face interactions are essential for **genuine connections**. As virtual communication becomes the norm, humans still prefer seeing faces. Digital Humans use **realistic human faces** to tap into this preference, helping businesses engage more deeply and gather valuable insights.



Introducing **Digital Humans**

A New Conversational Era

- **Hyper Realistic AI-Powered Avatars**
 - Powered by AI and Machine Learning, Digital Humans engage in human-like conversations and perform tasks
- **Realistic Human Faces**
 - Utilise realistic human faces to make technology interactions more accessible and user-friendly
- **Customisable and Personable**
 - Tailored to meet specific needs, providing a personalised user experience



Help businesses engage more deeply

The Value of Digital Humans

- **Scalable:** Capable of handling large volumes of tasks with minimal resource usage.
- **Multilingual Proficiency:** Understands over 60 languages, making them accessible to a global audience.
- **24/7/365 Availability:** Ensures continuous support and availability, unlike traditional assistants.
- **Multi-Platform Integration:** Can be seamlessly implemented on mobile and desktop platforms, or kiosks.
- **Simple to Create:** Easily create and manage Digital Humans through a user-friendly interface
- **Versatile Connections:** Integrates with any Large Language Model (LLM) or existing chatbot



UNITH Platform Components



1

Easily create and manage your own Digital Humans in a simple user interface or API

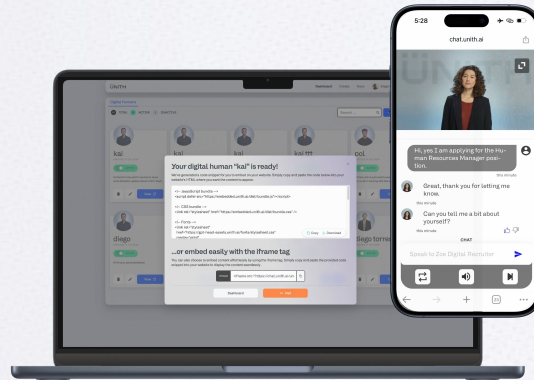
Choose your:

Organisational Knowledge Base

The Digital Human's "brain", powered by large language model (LLM) of choice

Persona

Customisable appearance, voice, accent, dialect, and AI-powered personality



2

Deploy Digital Humans on your website, or App

Embed:

Copy URL from platform, or for more technical users, visit <https://docs.unith.ai/> for all documentation, including configuration, plugins, integrations, and more.



3

Optimise Digital Human experience by what topics align with your audience

Iterate:

Review analytics and make adjustments to appearance, prompt, voice, language, suggestions, and more, all in the self-service platform.



Try it Out

DEMO ▶





ÜNITH

Q&A

unith.ai