

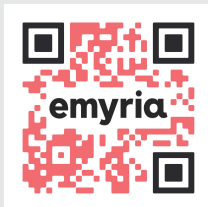
emyria

ASX : EMD

RESPONDING TO AUSTRALIA'S MENTAL HEALTH CRISIS

*Advanced therapies.
Compassionate care.*

November 2024
Investor Update



DISCLAIMER

This presentation has been prepared by Emyria Limited ACN 625 085 734 (Company or Emyria). This presentation is not a financial product or investment advice or recommendation, offer or invitation by any person or to any person to sell or purchase securities in Emyria in any jurisdiction. This presentation contains general information only and does not consider the investment objectives, financial situation and needs of individual investors. Investors should make their own independent assessment of the information in this presentation and obtain their own independent advice from a qualified financial adviser having regard to their personal objectives, financial situation and needs before taking any action. No representation or warranty, express or implied, is made as to the accuracy, completeness, reliability or adequacy of any statements, estimates, opinions or other information, or the reasonableness of any assumption or other statement, contained in this presentation. Nor is any representation or warranty (express or implied) given as to the accuracy, completeness, likelihood of achievement or reasonableness of any forecasts, prospective statements or returns contained in this presentation. Such forecasts, prospective statements or returns are by their nature subject to significant uncertainties and contingencies, many of which are outside the control of Emyria. To the maximum extent permitted by law, Emyria and its related bodies corporate, directors, officers, employees, advisers and agents disclaim all liability and responsibility (including without limitation any liability arising from fault or negligence) for any direct or indirect loss or damage which may arise or be suffered through use or reliance on anything contained in, or omitted from, this presentation. An investment in Emyria securities should be considered speculative and is subject to investment and other known and unknown risks, some of which are beyond the control of Emyria. Emyria does not guarantee any rate of return or the absolute or relative investment performance of Emyria securities. The distribution of this presentation including in jurisdictions outside Australia, may be restricted by law. Any person who receives this presentation must seek advice on and observe any such restrictions.

This release may contain certain forward-looking statements with respect to matters including but not limited to the financial condition, results of operations and business of Emyria and certain of the plans and objectives of Emyria with respect to these items. These forward-looking statements are not historical facts but rather are based on Emyria's current expectations, estimates and projections about the industry in which Emyria operates, and its beliefs and assumptions. Words such as "anticipates," "expects," "intends," "plans," "believes," "seeks," "estimates," "guidance" and similar expressions are intended to identify forward looking statements and should be considered an at-risk statement. Such statements are subject to certain risks and uncertainties, particularly those risks or uncertainties inherent in the process of developing technology and in the endeavour of building a business around such products and services. These statements are not guarantees of future performance and are subject to known and unknown risks, uncertainties and other factors, some of which are beyond the control of Emyria, are difficult to predict and could cause actual results to differ materially from those expressed or forecasted in the forward looking statements. Emyria cautions shareholders and prospective shareholders not to place undue reliance on these forward-looking statements, which reflect the view of Emyria only as of the date of this release. The forward-looking statements made in this announcement relate only to events as of the date on which the statements are made. Emyria will not undertake any obligation to release publicly any revisions or updates to these forward-looking statements to reflect events, circumstances or unanticipated events occurring after the date of this announcement except as required by law or by any appropriate regulatory authority.

All medicines carry risks and specialist prescribers, such as registered psychiatrists, are best placed to assess the suitability of a new medication against a patient's individual circumstances and medical history before proceeding. Adverse effects of MDMA include high blood pressure, increased pulse rate, faintness, and panic attacks, and in some rare cases it can cause loss of consciousness or trigger seizures. Other side effects include involuntary jaw clenching, decreased appetite, restless legs, nausea, headache, sweating and muscle/joint stiffness. These effects are unlikely at low doses in the treatment regimens used in psychedelic-assisted psychotherapy while appropriately managed in a controlled environment with direct medical supervision.

1

The mental health crisis gripping Australia's private hospitals

Some health insurers say stand-alone mental health hospitals are unlikely to exist in 10 years' time given the challenges they face.

2

Youth mental health is a 'global crisis' according to world-leading study

3

Australians' mental health drops to 4-year low

Businesses losing up to 69 workdays of productivity annually per employee due to poor mental health: report

4

Bethesda Clinic to close nine months after opening due to lack of psych doctors and funding issues

5

70% of Australians with depressive disorders not getting adequate treatment

Figure 2: Types of serious illness by age and sex, 2009 to 2021

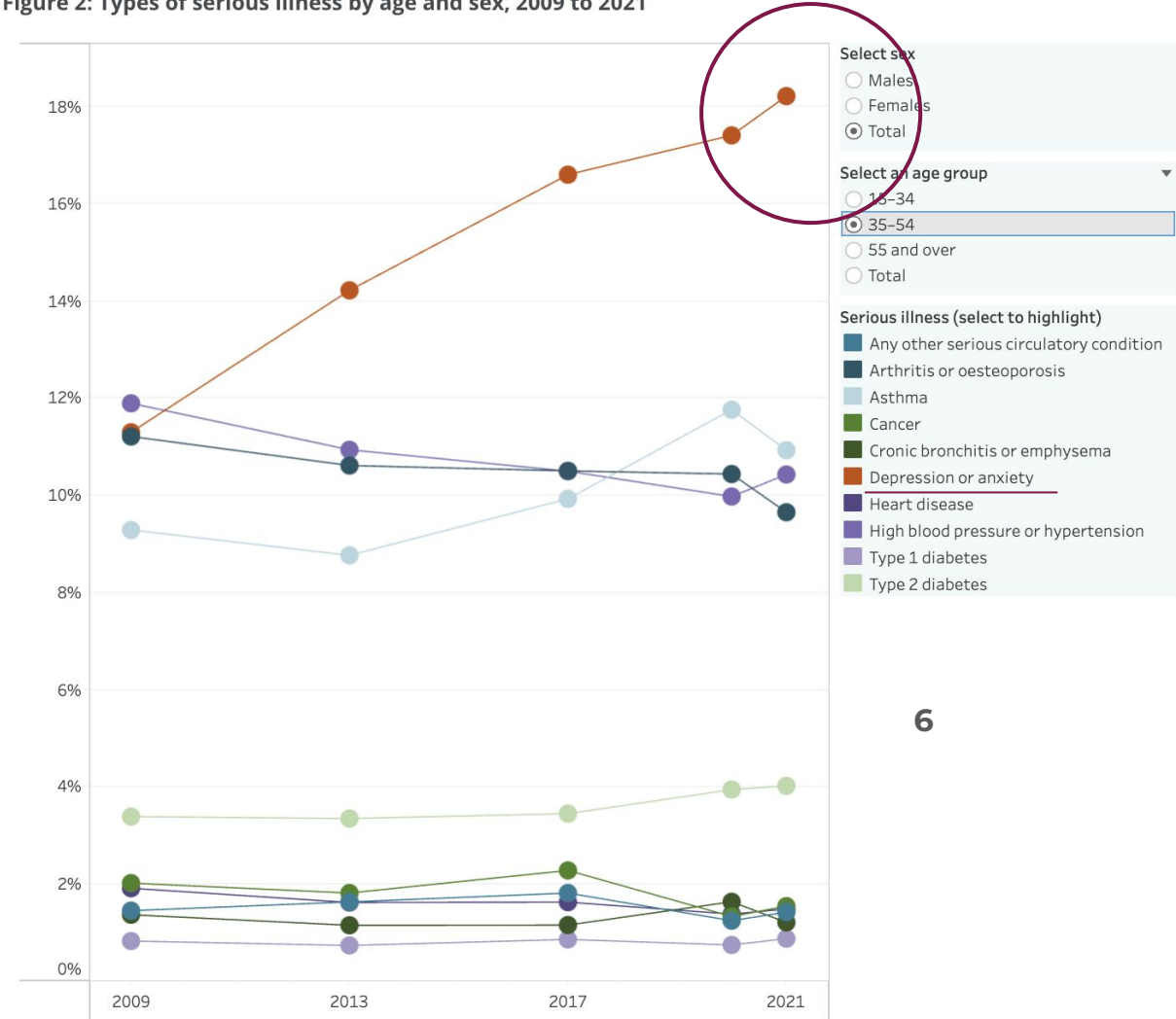


Figure 2: Estimated proportion of Australians reporting serious illnesses, by sex and age group, 2009-2021.



Greg Hutchinson
Non-Executive Chairman
Emyria Limited



Australia's mental health crisis is escalating rapidly, underscoring the urgent need for more effective solutions.

As a leader in world-class mental health programs, Emyria is uniquely positioned, and obligated, to address this challenge.

As the only ASX-listed company delivering direct care in this field, our mission is clear: to expand access to our innovative treatments, improving the lives of more Australians.



EMYRIA'S ADVANTAGE: WORLD-LEADING TREATMENT PROGRAMS

Australia is the only jurisdiction in the world that has approved legal access pathways ¹



Emyria has leveraged this advantage to successfully navigate and overcome multiple regulatory barriers to entry



TGA approved specialists & trained therapists ✓



Pharmaceutical grade medicine ✓



Ethics-endorsed care programs ✓



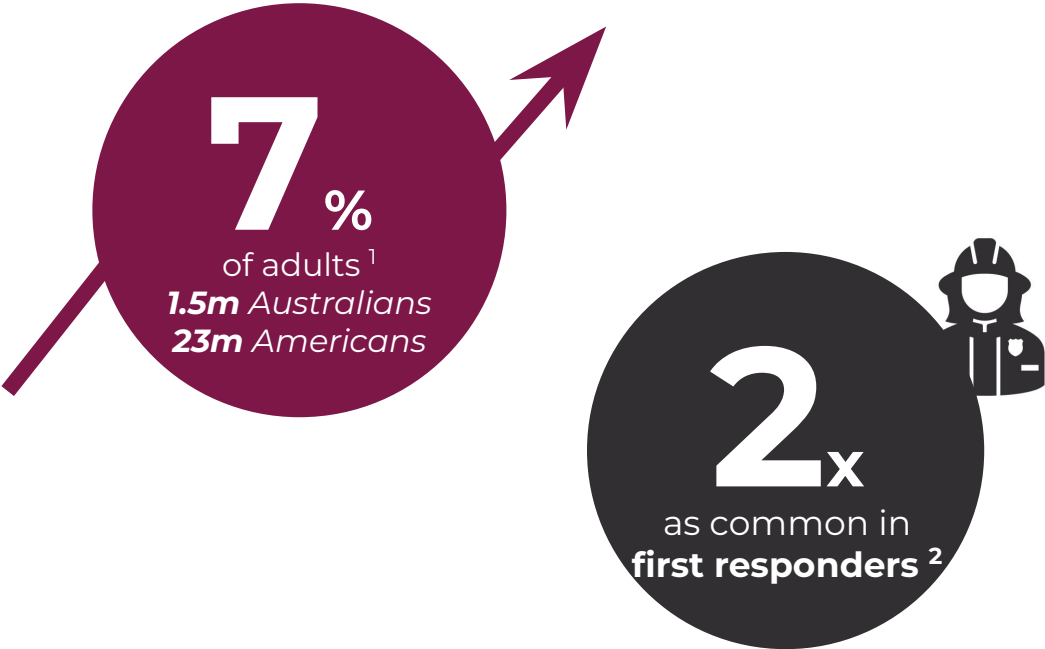
Fit-for-purpose treatment centres ✓

Major health funders are actively engaging with Emyria to explore the most effective ways to support and fund our programs



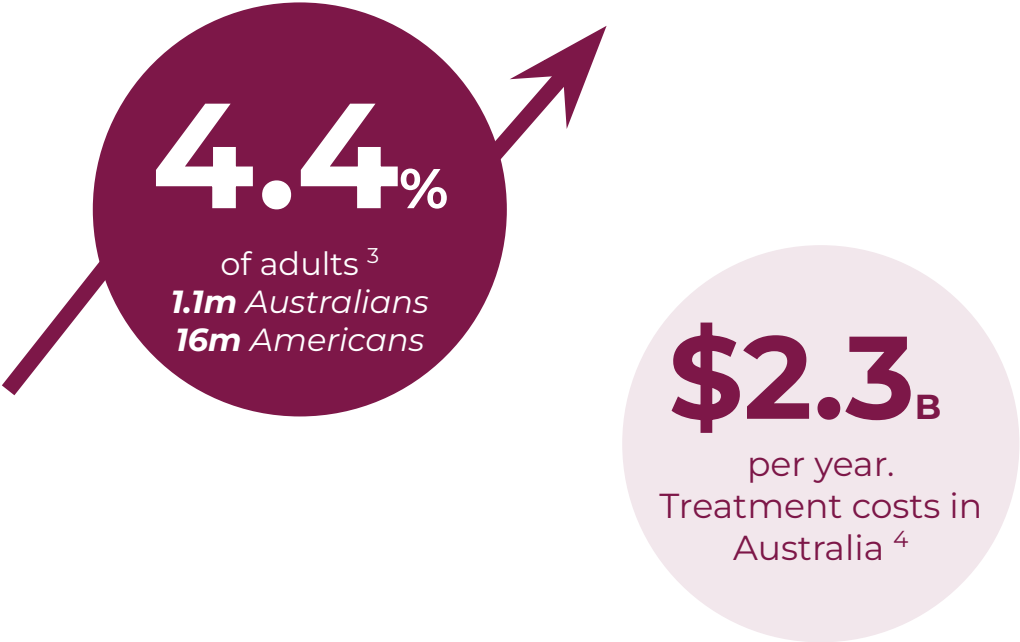
Post-Traumatic Stress Disorder

A chronic, debilitating condition that can develop after experiencing, or repeatedly being exposed to, traumatic events



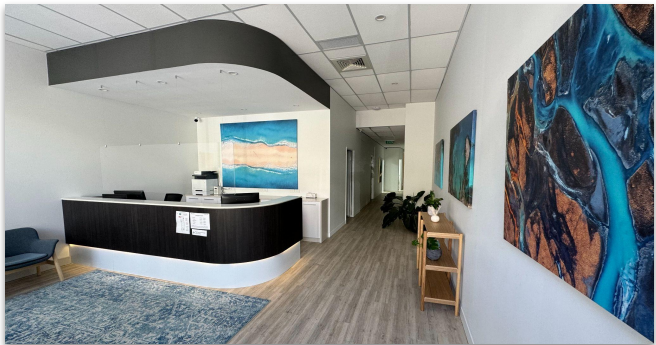
Treatment-Resistant Depression

Major depression that does not improve after trialling 2 or more medications



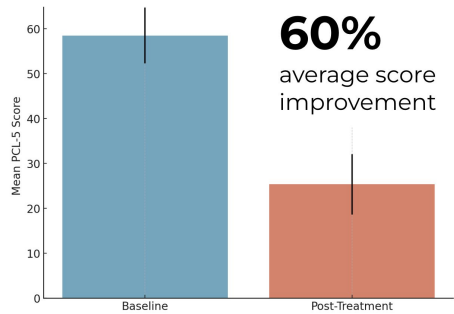
SOURCES:
1. <https://www.phoenixaustralia.org/ptsd-awareness-day/>
2. Obuobi-Donkor G, et al. A Scoping Review on the Prevalence and Determinants of Post-Traumatic Stress Disorder among Military Personnel and Firefighters: Implications for Public Policy and Practice. Int J Environ Res Public Health. 2022 Jan 29;19(3):1565. doi: 10.3390/ijerph19031565.
3. <https://www.sciencedirect.com/science/article/pii/S2772598724000230>
4. <https://research-management.mq.edu.au/ws/portalfiles/portal/112464237/112458032.pdf>

World-class, dedicated medical centres, specialising in new psychiatric treatments ¹

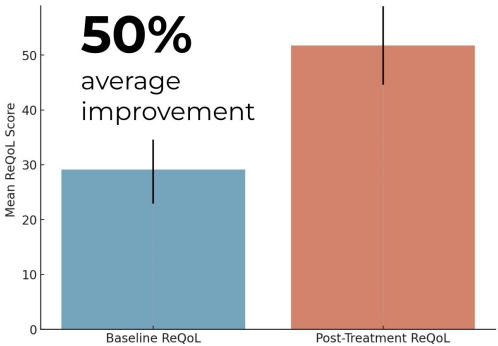


Delivering positive clinical outcomes ²

PTSD Symptoms ¹ | All patients had a clinically significant improvement in symptom scores (change of 12 points or more)



Quality of Life ² | All patients had a clinically significant improvement in QoL scores (>10 point change)



Actively expanding programs

Have added 4 new psychiatrists to team ³ ✓

First East Coast specialist ✓

Engagement with private mental health hospitals to extend accessibility for patients ✓

Our same clinical team and infrastructure can support additional treatment programs



**TGA Approved
Authorised
Prescribers**



Australian Government

Department of Health and Aged Care
Therapeutic Goods Administration



**Pharmacy-grade
medicine supply
secured**



**Facility & team
ready to deliver**



Photo:
Left to Right. Patient actor, Emyria's Lead Therapist (Claire Kullack) and Emyria's Lead Psychiatrist (Dr. Jon Laugharne)

Investor confidence in psychedelics is returning, driven by shifting political landscapes in the US that may signal broader acceptance and support for these treatments.

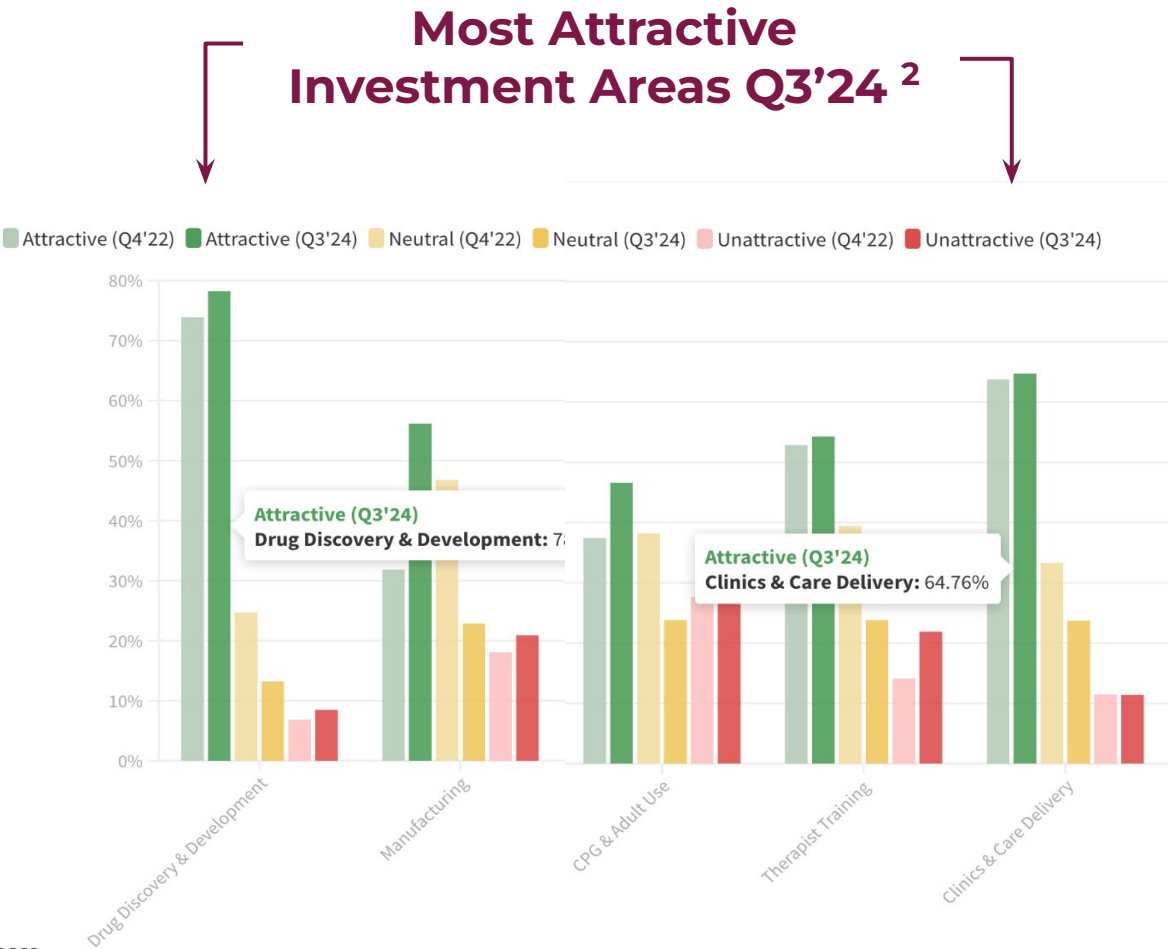
POLITICO

The buzz about Trump and psychedelics

By ERIN SCHUMAKER, DANIEL PAYNE, RUTH READER and CARMEN PAUN | 11/11/2024 02:00 PM EST

Donald Trump’s return to the White House could be a bright spot in an otherwise brutal year for the psychedelic medicine movement.

Sources:
1. <https://www.politico.com/newsletters/future-pulse/2024/11/11/the-buzz-about-trump-and-psychedelics-00188669>
2. Q3'24 Results: The Psychedelic Investor Survey - Psychedelic Alpha - <https://psychedelicalpha.com/news/psychedelic-investor-survey-q3-2024>



SUBSTANTIAL SHAREHOLDERS		
	Shareholder	%
	Tenmile	5.8%
	Top 50	65.9%

ASX: EMD TRADING INFORMATION		
	Last Traded Share Price	A\$0.039
	12-Month low / high	A\$0.026 / 0.079
	Shares Outstanding	415,389,396
	Market Capitalisation ¹	A\$16.2M
	Last Cash Position ²	A\$660,000
	Expected R&D refund ²	~A\$650,000

NOTES:
1. As of close of market 22 November 2024
2. As reported in September Quarterly Report

CONTACT INFORMATION

Michael Winlo (MD)
Investor / Media Inquiries

mwinlo@emyria.com
investors@emyria.com

Visit Our Investor Hub

