



ASX: KGD AGM Presentation

Western Australian Gold and Minerals Explorer

Disclaimer

Cautionary Statement:

Forward Looking Statement:

This Presentation may include statements that could be deemed “forward-looking statements”. Although Kula Gold Limited (the Company) believes the expectations expressed in such forward-looking statements are based on reasonable assumptions, such statements are no guarantee of future performance and actual results or developments may differ materially from those expected in the forward-looking statements or not take place at all.

No offer to sell or invitation to buy:

This Presentation is not, and should not be considered to, constitute any offer to sell, or solicitation of an offer to buy, any securities in the Company, and no part of this Presentation forms the basis of any contract or commitment whatsoever with any person. The Company does not accept any liability to any person in relation to the distribution or possession of this Presentation from or in any jurisdiction.

Disclaimer

Whilst care has been exercised in preparing and presenting this Presentation, to the maximum extent permitted by law, the Company and its representatives:

- make no representation, warranty or undertaking, express or implied, as to the adequacy, accuracy, completeness or reasonableness of this Presentation;
- accept no responsibility or liability as to the adequacy, accuracy, completeness or reasonableness of this Presentation; and
- accept no responsibility for any errors or omissions from this Presentation.

The Company confirms that it is not aware of any new information or data that materially affects the information included in the original market announcements and that all material assumptions and technical parameters underpinning the estimates in the relevant market announcements continue to apply and have not materially changed. The company confirms that the form and context in which the Competent Person’s findings are presented have not been materially modified from the original market announcements.

Competent Person Statements

The information in this report that relates to geology, exploration and resources is based on information compiled by Mr Adam Anderson, a Competent Person who is a member of the Australian Institute of Mining and Metallurgy and the Australian Institute of Geoscientists. Mr. Anderson is a Consultant to Kula Gold. Mr. Anderson has sufficient experience, which is relevant to the style of mineralisation, geology and type of deposit under consideration and to the activity being undertaken to qualify as a competent person under the 2012 edition of the Australasian Code for Reporting Exploration Results, Mineral Resources and Ore Reserves (the 2012 JORC Code). Mr. Anderson consents to the inclusion in the report of the matters based on his information in the form and context in which it appears.

Kula Gold Ltd ACN: 126 741 259

About Kula Gold

Kula Gold Ltd (ASX: KGD)



3 West Australian Regions

1 Southern Cross WA

projects including Airfield, Rankin Dome and Westonia. Two under-utilised operating gold mills in the district.

- Recent discovery of the Boomerang Kaolin project
- High priority gold targets at newly discovered greenstones at Airfield
- Exciting early stage REE results at the - Rankin Dome Project
- Westonia Project adjacent to Edna May Gold Mine (ASX:RML) – large auger a program completed - assays pending

2 **Brunswick-SW WA** - Julimar/Boddington style targets potential for Gold, Cu-Au and Ni-Cu PGE-Li style mineralization – advancing DBGM moving to drill stage, nearby Whitesands Gold Prospect advancing

3 **Lake Rebecca - Kurnalpi WA**– large land holding near Ramelius Resources (ASX:RML) – Lake Rebecca 1Moz resource gold deposit, and E79 Gold Mines (ASX:E79)



Corporate Snapshot



Shares on Issue: 215,175,632



Market Cap @ 3.3c \$7 million



Cash (31 March 2022): \$1.1 million

Mark Stowell *BBus, CA*
Chairman

The founding Chairman of Mawson West Ltd, a copper producer and explorer which completed an IPO on the Toronto Stock Exchange in one of the largest base metal IPO's of 2011. He was a founder and Non-Executive Director of Incremental Petroleum Limited, and Anvil Mining Ltd.

Mark Bojanjac *BCom, CA*
Director

A founding director of Gilt-Edged Mining Limited which discovered one of Australia's highest grade gold mines and managing director of an unlisted public company which successfully developed and financed a 2.4Moz gold resource in Mongolia. He was previously CEO of Adamus Resources Limited.

John Hannaford *BCom, CA, FFin*
Director

Experienced corporate advisor and company director with broad financial experience from several corporate resource roles.

Simon Adams *BBus, ACIS*
Director

Experienced CFO with a background in a range of resource industries. Former CEO of Atlas Pearls Ltd.

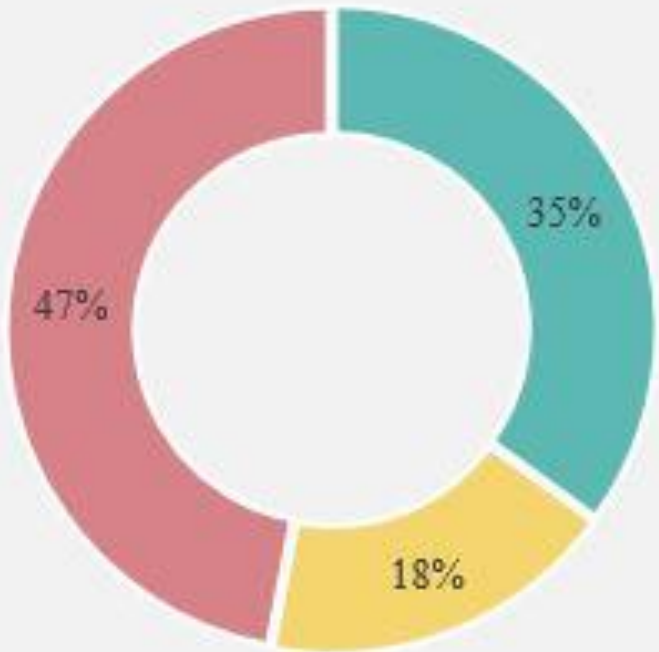
Adam Anderson
Bsc(Hons)
Exploration Manager

Expert in exploration interpretation and resource definition to advanced project development status. Involved in discovering the Golden Cities project in WA and taking it to prefeasibility. Planned and drilled the discovery hole for the Certej deeps which ultimately saw the resource increase from 2Mozs to over 4Mozs. Responsible for 7 JORC Compliant Copper Resources in the DRC.

Melanie Hickman
Bsc(Hons)
Acting Exploration Manager

+15 years' experience in nickel and gold exploration and mining in Western Australia. Melanie has a strong focus on using field-based observations to understand the structural architecture and timing of mineralisation within a mineralising system. Application of this approach at Lanfranchi Nickel Mine resulted in the discovery of an additional 7.4K tonnes contained Ni (worth \$50M at the time), and sitting just 2 cuts from existing development on every level – pure profit!

Major Shareholders

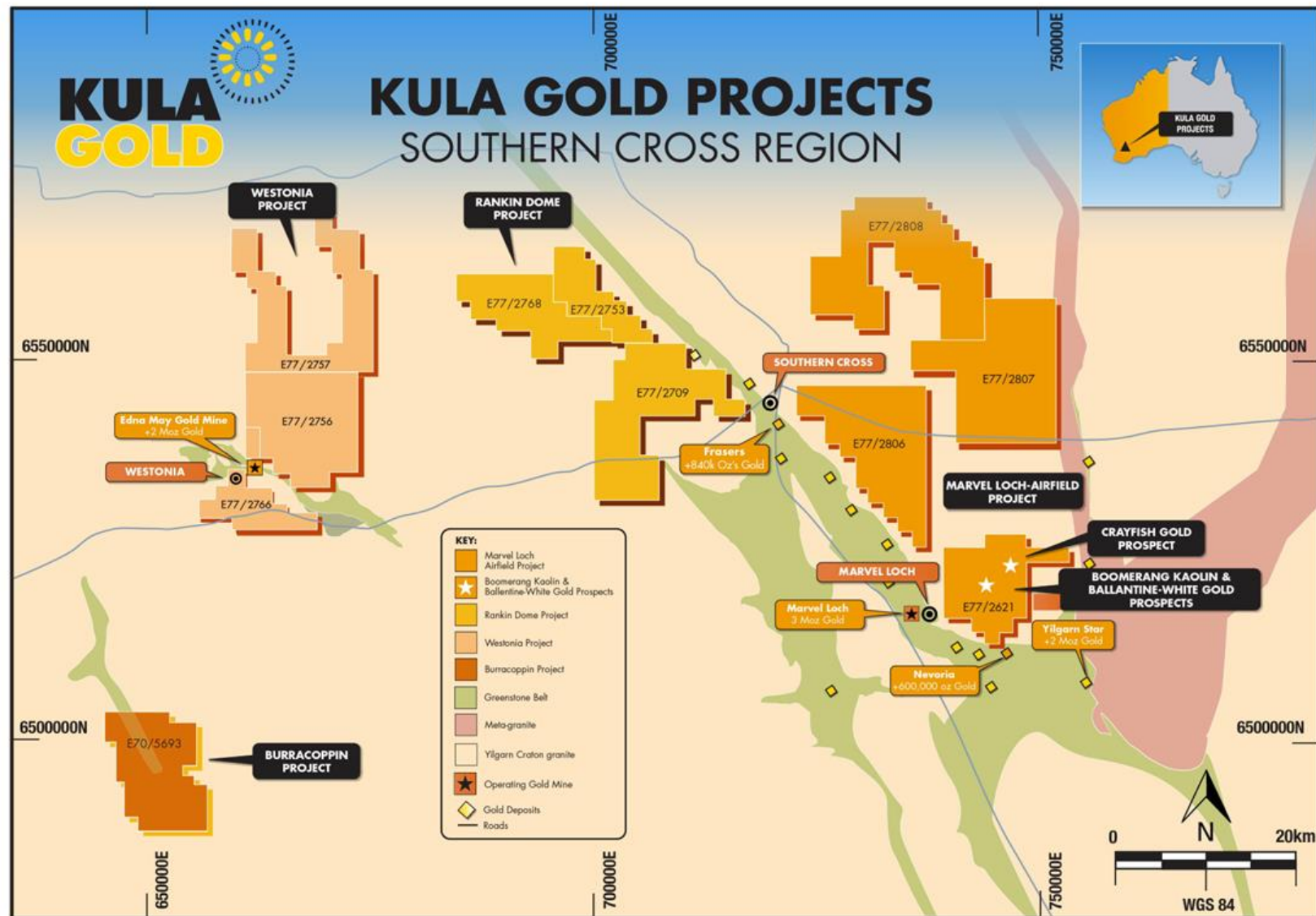


■ Top 20 (Excl Board & Management)

■ Board and Management

■ Other

SOUTHERN CROSS REGION



Southern Cross Region



Stark drilling in action at the Airfield Project



Greenstone discovered at the Airfield project during 2021 drilling - Host rock for most of the gold produced in the area ~15moz. Totally unexplored in Airfield



Follow up drilling conducted in late 2021



Southern Cross Region

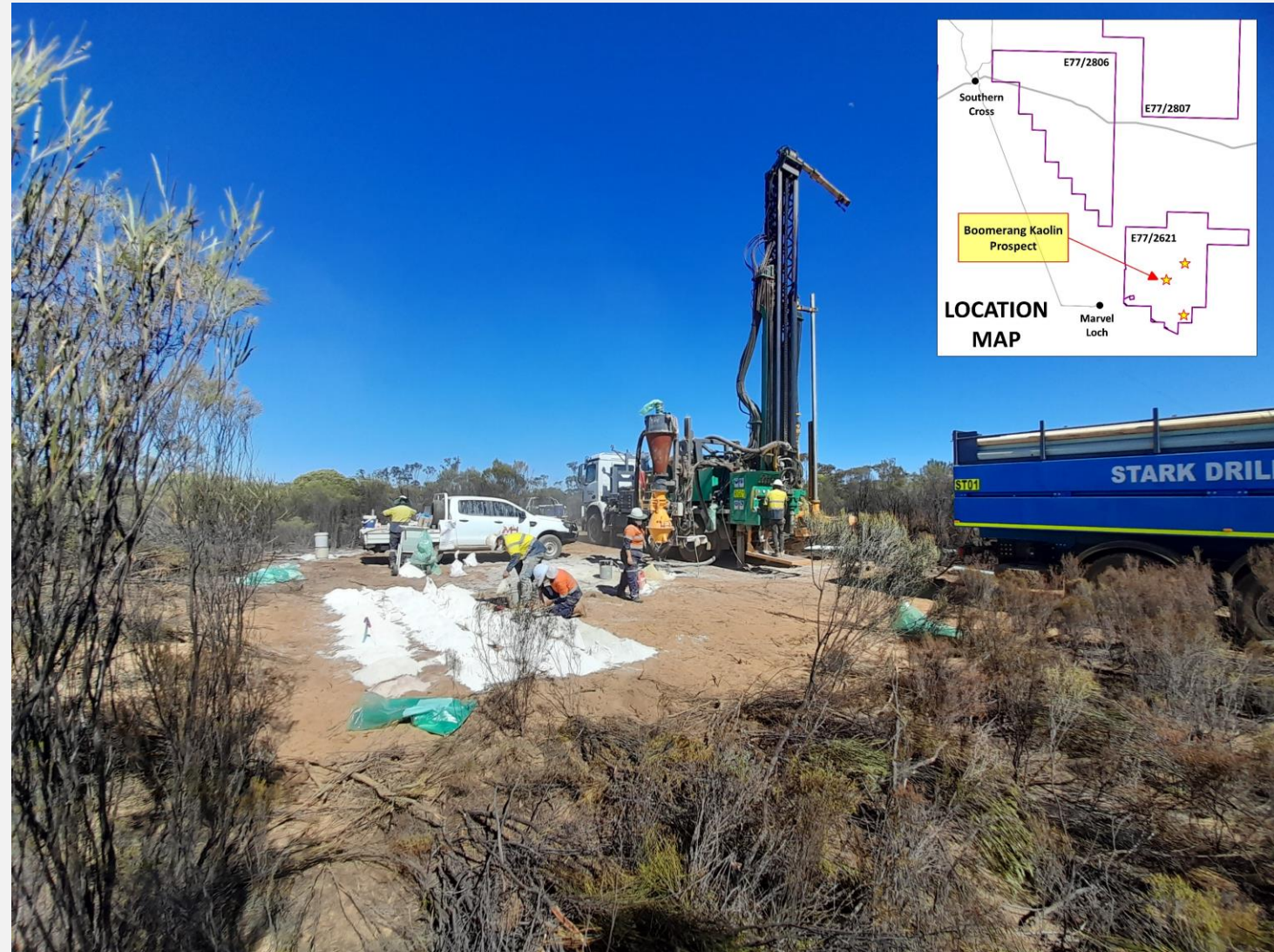
Gold Potential Underneath the Kaolin



Gold targets have been identified beneath the Kaolin zone



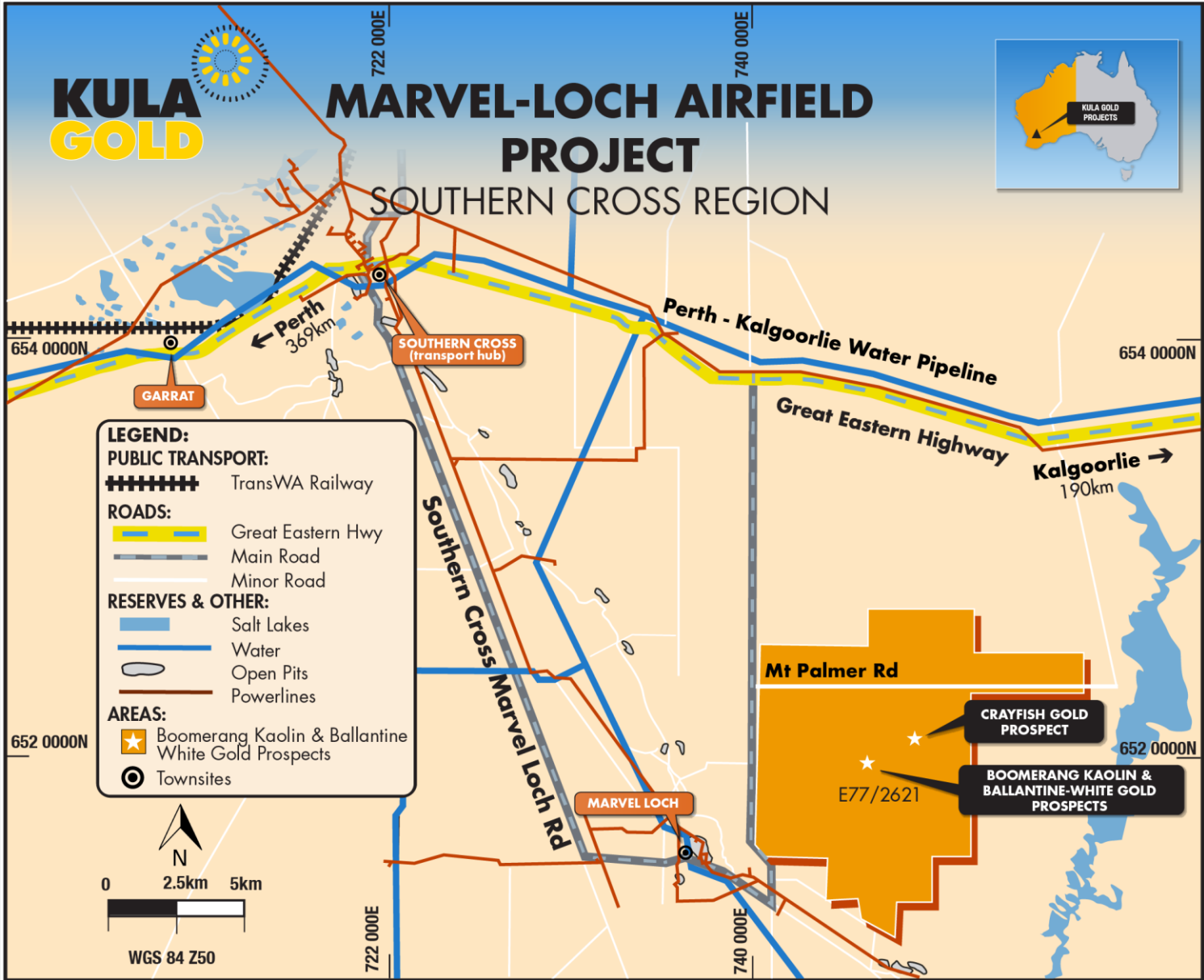
The recent Kaolin RC Drill program was extended deeper past Kaolin into fresh rock to test for gold. Results pending



RC drilling at the Boomerang Kaolin Project

SOUTHERN CROSS REGION

The Marvel Loch Airfield Project sits within the proximity of excellent Infrastructure as shown on the map opposite – road, rail, water, power and towns.



Southern Cross Region – Boomerang Kaolin Project

Kaolin



One of the most utilised clays in the world:

Ceramics,
Paper
Fibreglass
Construction (Metakaolin),
HPA
Rubber
Plastics
Polishes
Pharmaceuticals
Cosmetics
and much more



A major potential for CO₂ reduction in the construction industry



Southern Cross Region – Boomerang Kaolin Project

The Kaolin Market

US \$6B

Current Global Market

US \$7B

Global Market expected to reach
2026

Growing ASX interest:

Andromeda Metals (ADN:ASX)
Latin Resources (LRS:ASX)
Pepini Minerals (PNN:ASX)
Suvo Strategic Minerals(SUV:ASX)
WA Kaolin (WAK:ASX)



CO² BENEFITS



metakaolin partially replaces Portland cement to reduce CO² emissions, enhance durability, and create high-performance characteristics in innovative cementitious materials.



Southern Cross Region –Rankin Dome REE Project



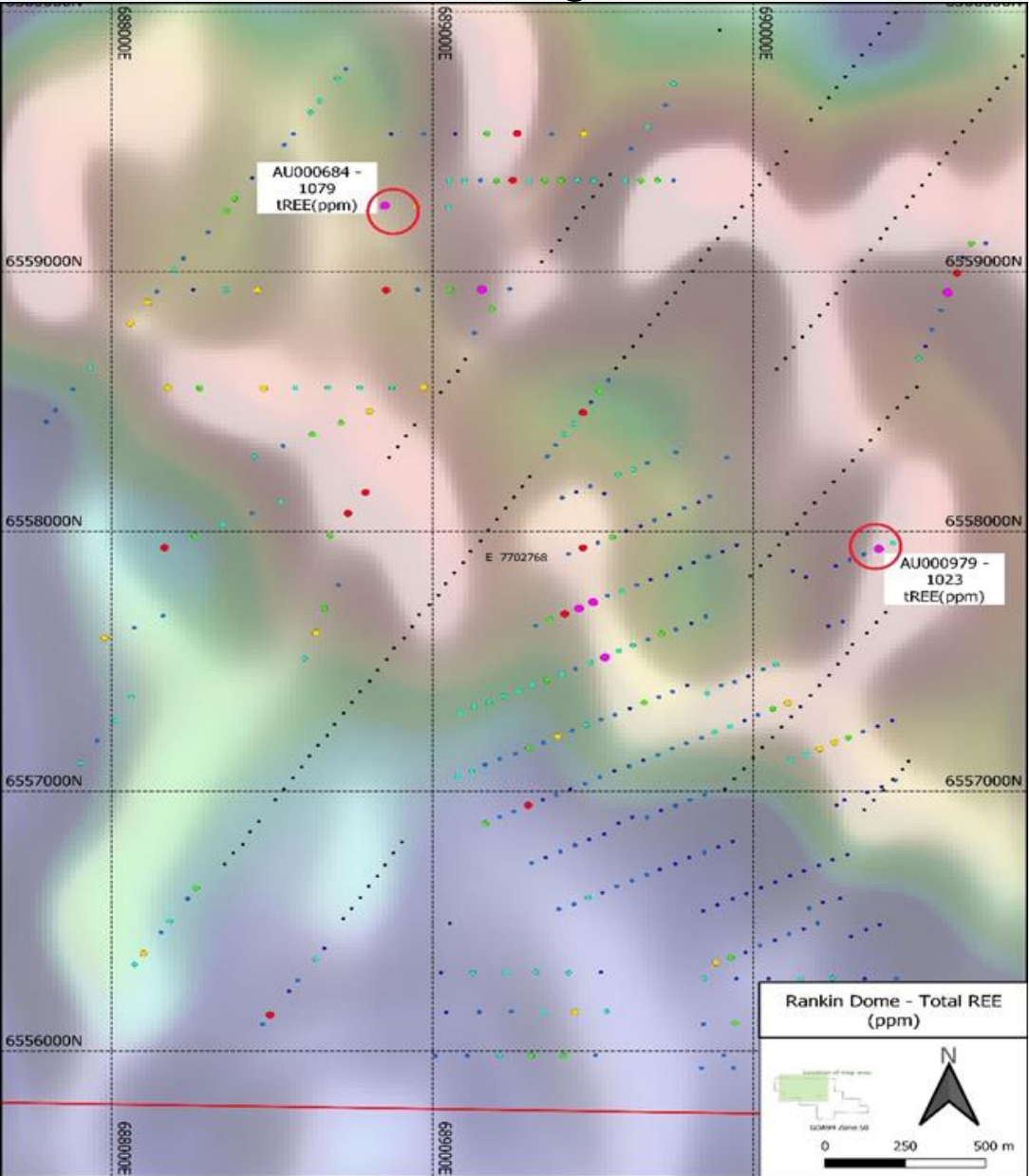
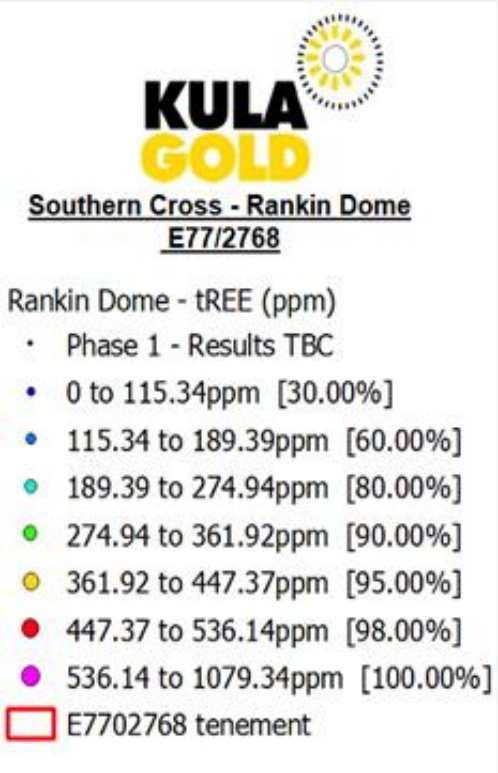
Phase 2 auger was conducted over the project in January 2022



Assay results reveals 70% of 375 samples are above 115ppm total Rare Earth Elements (REE) with 2 samples peaking at 1080ppm (ASX Release 13 May 2022)



Phase 1 auger being resampled for REE



Southern Cross Region – Westonia Gold Project



Tenement covering 357km² around the Edna May Gold Mine at Westonia WA



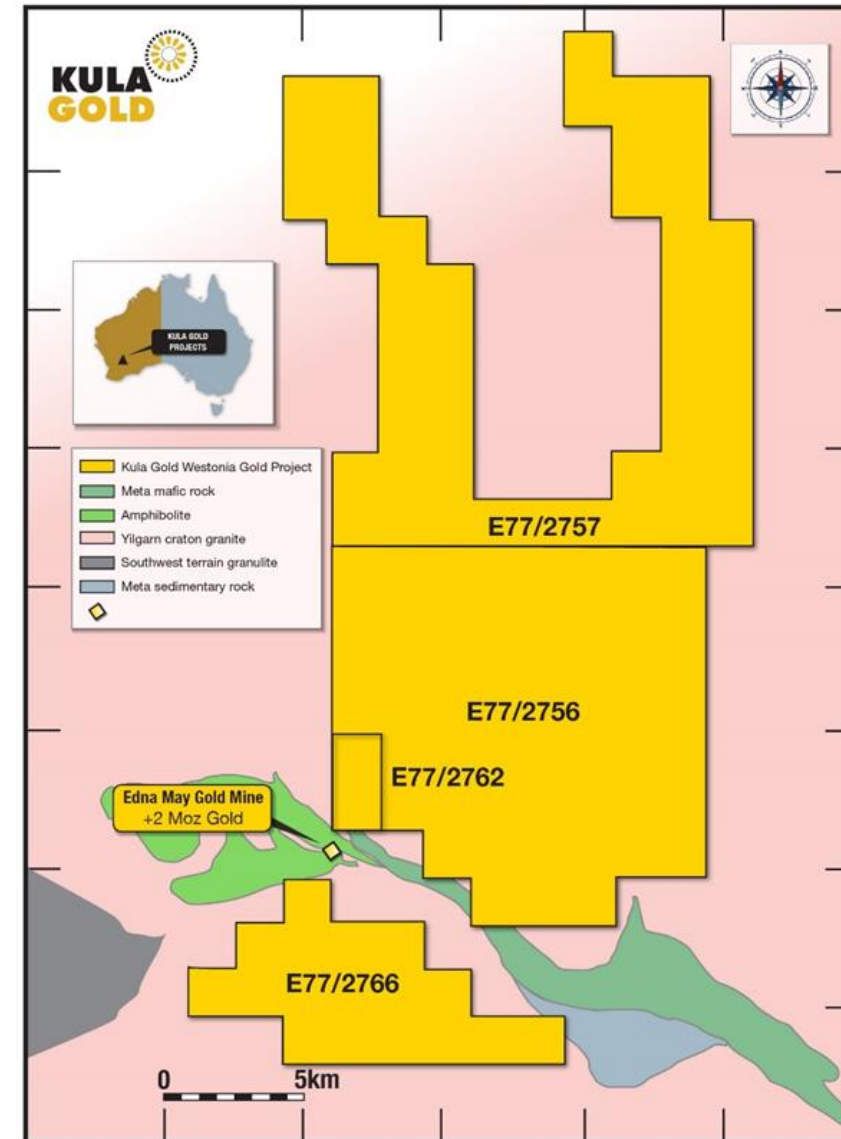
Gravity and magnetic targets identified by Kula from reprocessing publicly available data



The development and mining of any discovery is potentially quicker plus any development of future projects would require far less capex than a green fields new mine development



Drilling results from a recent program over E 77/2766 are pending



Southern Cross Region – Westonia Gold Project



Gravity anomaly (red circle) on E77/2766, yellow triangles indicating the Edna May Deposits (Right Image)



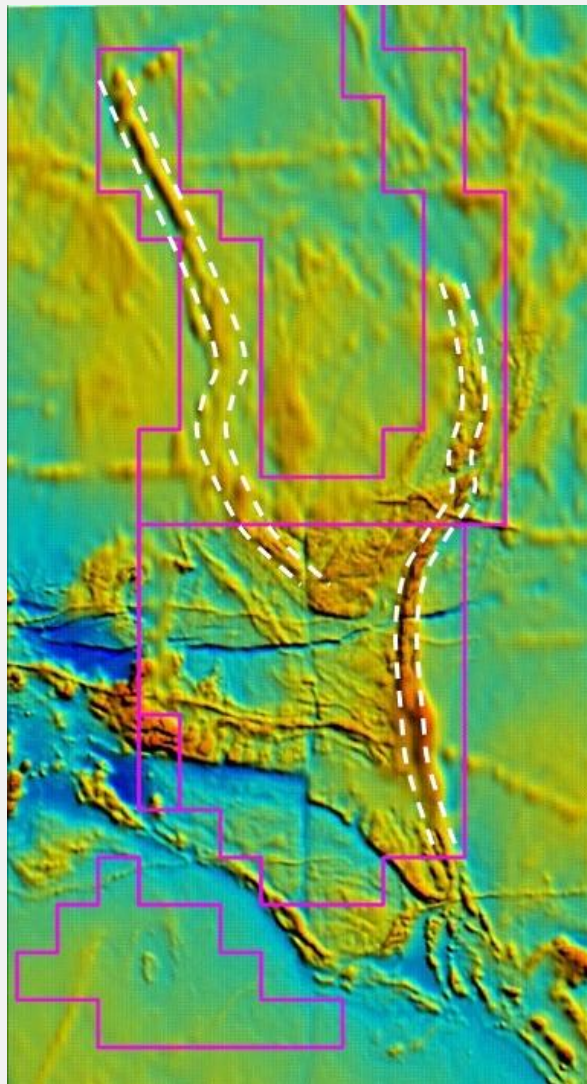
No historical drilling has been undertaken on the southern license E77/2766. Auger geochemical drilling will test the gravity anomaly as a first pass technique



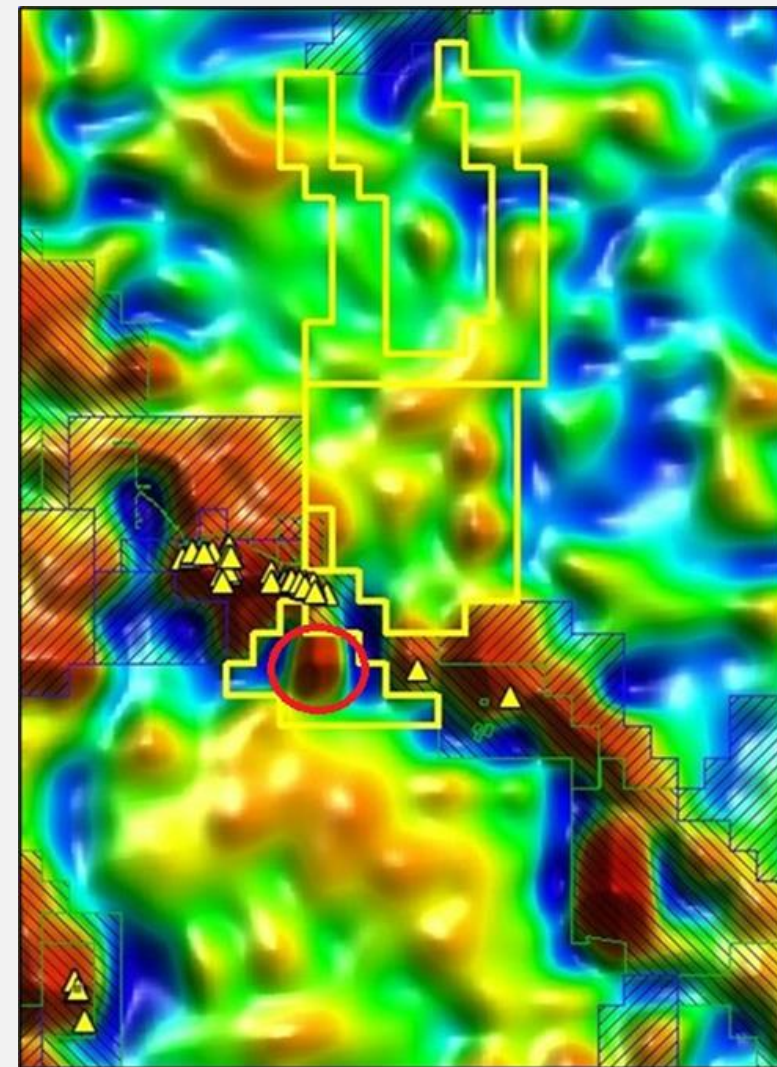
Reprocessed TMI-RTP magnetics showing potential greenstones north of Westonia, within the boundary of the newly secured tenements



Potential greenstone is displayed by the white dotted lines



Westonia Magnetics maps

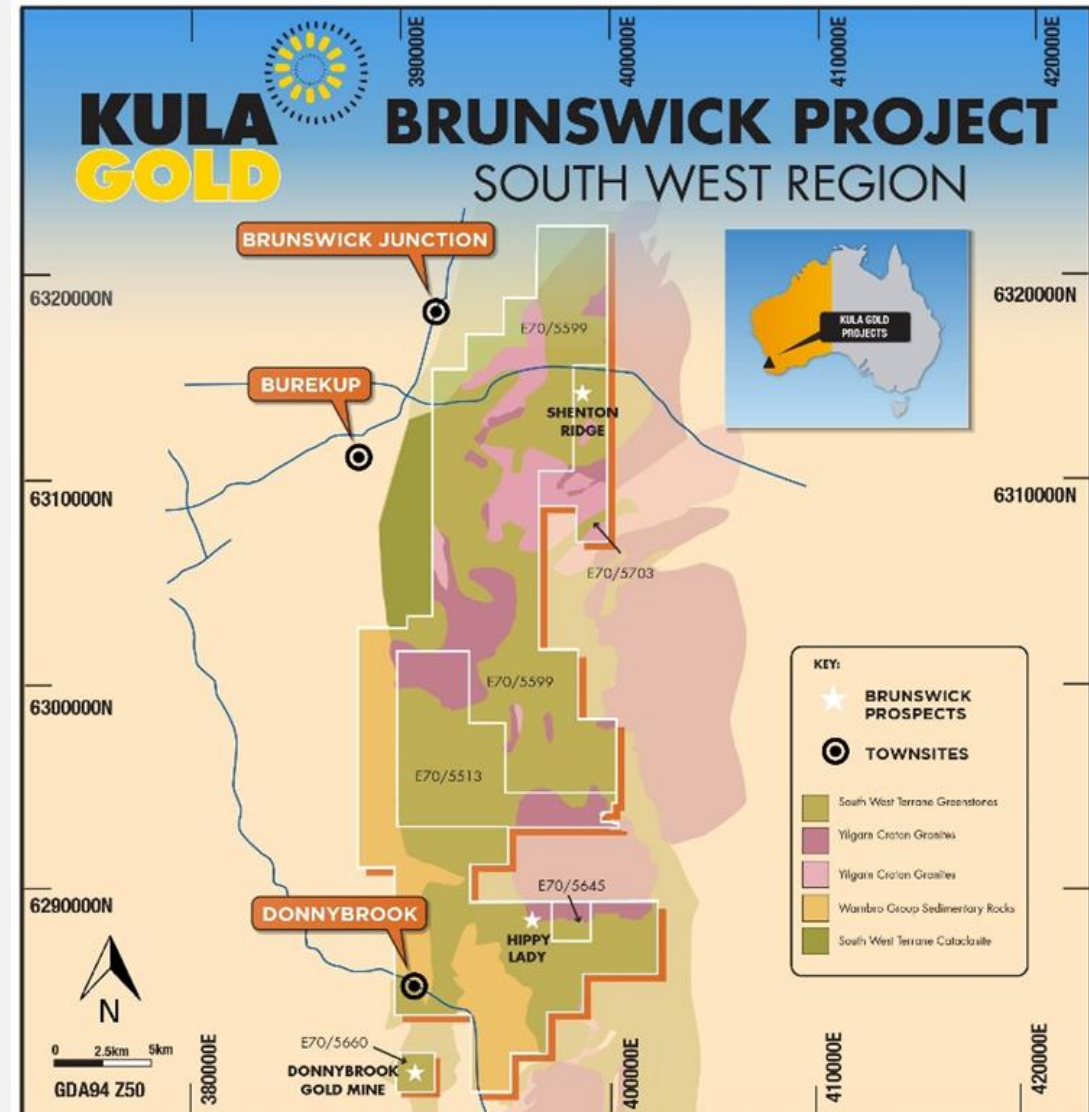


Westonia Gravity Map

Brunswick Cu-Au and Ni-Cu-PGE Li Project

Background

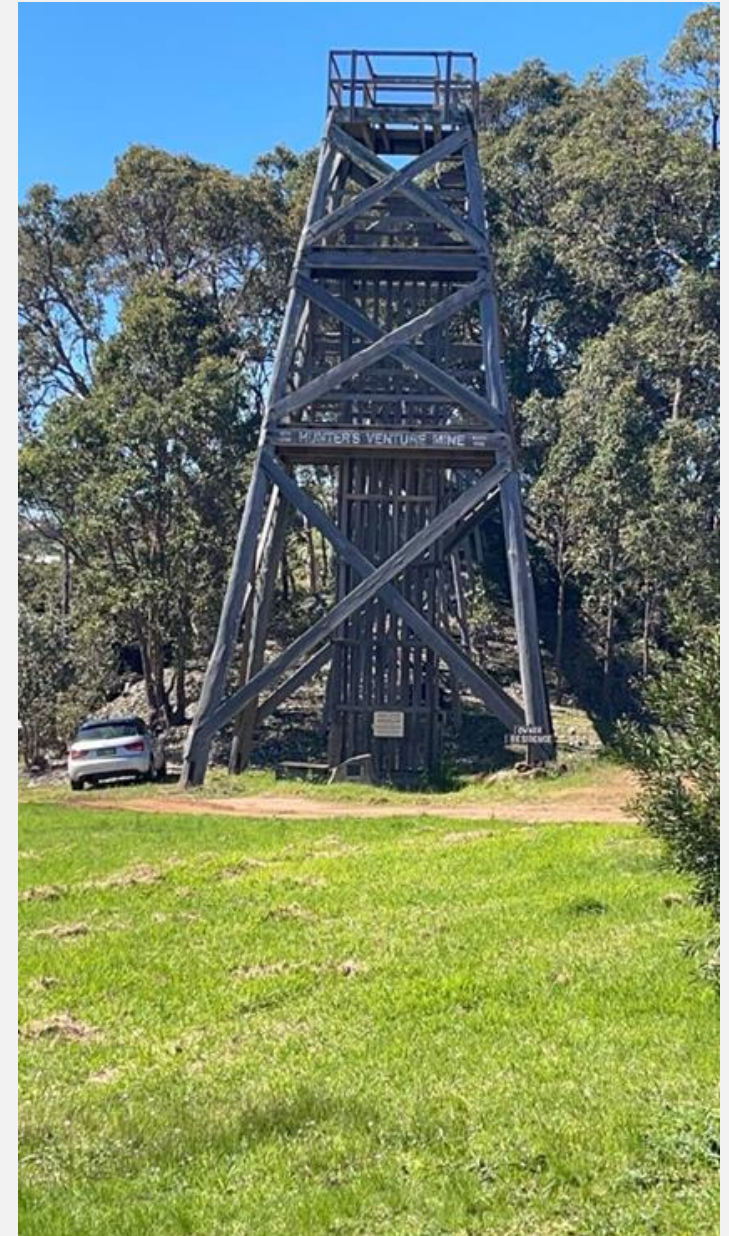
-  Large land holding over 306km² Gold, Copper, PGE, and Lithium
-  In the prospective Western Gneiss Terrain which hosts Chalice Gold Mines, 'Julimar Ni-Cu-PGE Au Project' to the North, and the Boddington Cu-Au Mine to the NE
-  Donnybrook Gold prospect moving to drill stage, nearby Whitesands Gold Prospect advancing
-  Project is also prospective for lithium bearing pegmatites (40km from Greenbushes Lithium Mine)



Brunswick: Donnybrook Gold Mine Prospect



A pre existing Adit



The Hunter Venture Gold Mine and head frame

Kurnalpi Region - Lake Rebecca

Overview and Recent Activity



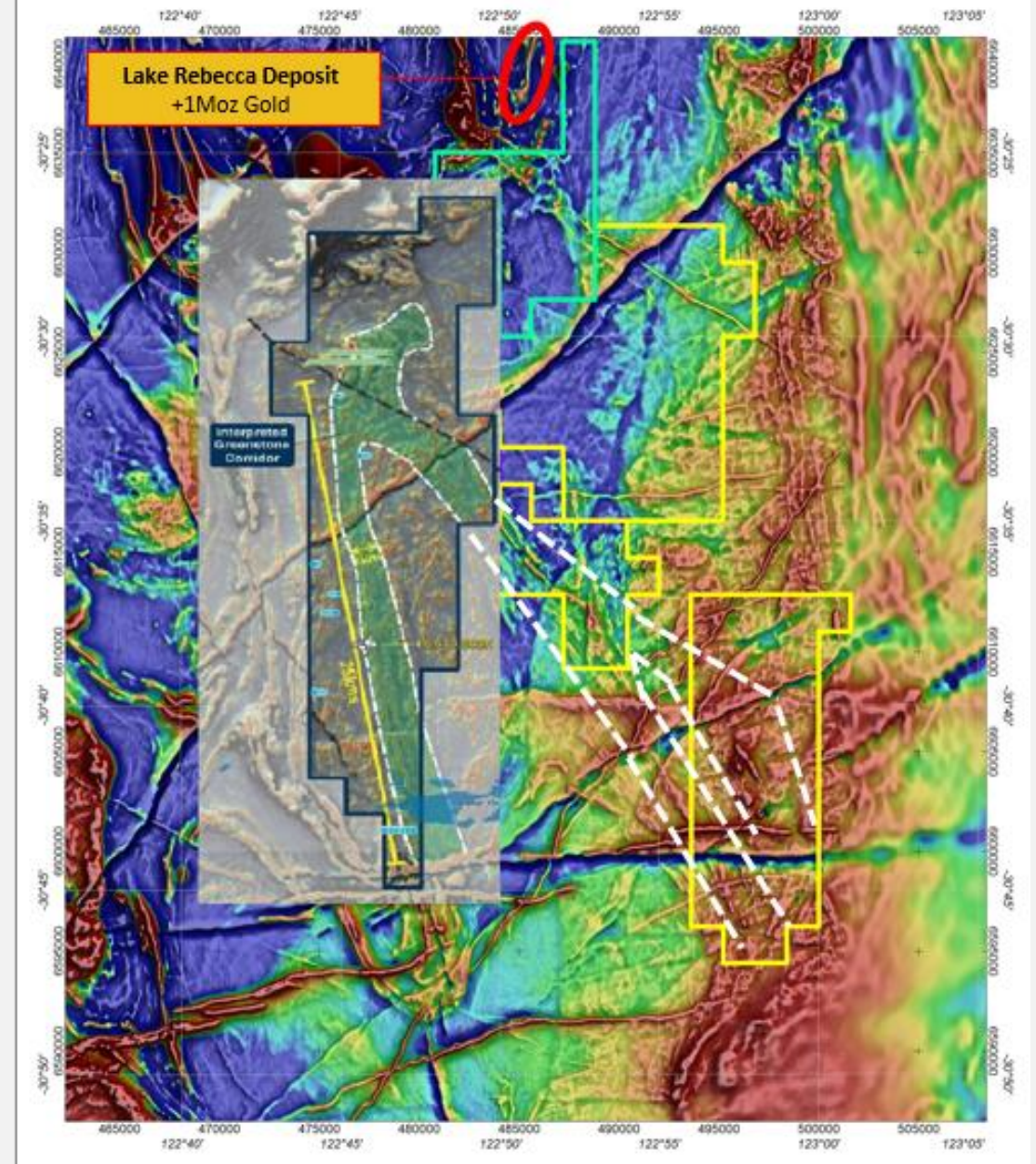
311km² of tenure in the Laverton Tectonic Zone – one of the worlds most prolific gold belts ~30Moz



Adjacent to Remelius Resources Ltd (ASX: RMS) tenements, ~10km south of their Lake Rebecca project where >1million ounce gold resource has been discovered (announced Feb-2020)

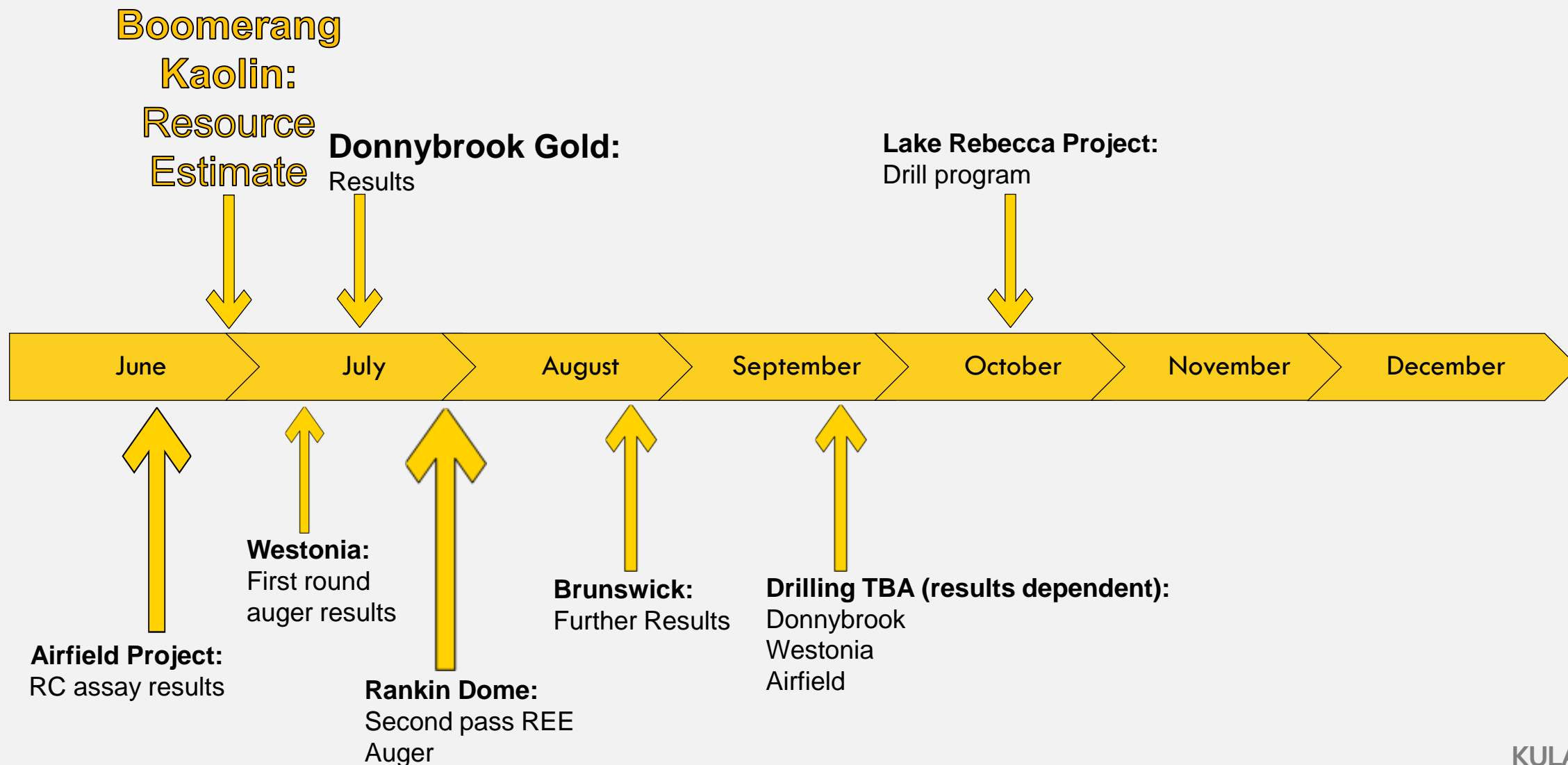


Newly interpreted greenstone traverses into Kula's ground as shown by the white dotted lines



- Gold borders denote Kula Gold tenements
- Dark blue borders denote E79 Gold Mine Tenements

7 Month Schedule of Operations



Summary



- ✓ First mover advantage into new areas
- ✓ Southern Cross projects - Under-utilized district gold plants within 60km offer potential to quickly transition into a gold producer with exploration success
- ✓ Boomerang Kaolin Project resource estimation H1 2022
- ✓ Low operating costs – maximum \$ in ground per \$ spent – generally close to operating mines, close to good infrastructure, more samples per \$ spent including admin
- ✓ Experienced team with innovative world class exploration techniques
- ✓ Driven for exploration success

For the latest news from Kula Gold during 2022 please visit our website www.kulagold.com.au