



WIA**GOLD**

Developing Namibia's nascent gold industry

21 November 2024

Disclaimer

General Information and Disclaimer

This presentation has been prepared for the purposes of providing information to the recipient regarding Wia Gold Limited (**WiaGold** or the **Company**). It does not, and does not purport to, contain all the information that the recipient may require to evaluate the Company. It should be read in conjunction with WiaGold's other periodic and continuous disclosure announcements, which are available at www.asx.com.au.

No representation or warranty is given as to, and the recipient must not rely on, any information, statement or opinion contained in this presentation, or its accuracy, reasonableness or completeness. Except for statutory liability which cannot be excluded, each of WiaGold, its affiliates, directors, employees, advisers and agents expressly disclaims any responsibility for the accuracy or completeness of the material contained in this presentation and excludes all liability whatsoever for any loss or damage of any kind arising as a result of the use of, or reliance on, the information in this presentation.

This presentation does not take into account the investment objectives, financial situation or particular needs of any investor, potential investor or any other person. No investment decision should be made in reliance on this presentation. Independent financial and taxation advice should be sought before making any investment decision.

Forward Looking Statements

This presentation may contain certain forward looking statements and projections regarding: estimated, resources and reserves; planned production and operating costs profiles; planned capital requirements; and planned strategies and corporate objectives.

Forward-looking statements are subject to a variety of known unknown risks, uncertainties and other factors that could cause actual events or results to materially differ from those reflected

in the forward- looking statements, including, without limitation: inherent uncertainties and risks associated with mineral exploration; uncertainties related to the availability of future financing necessary to undertake activities on WiaGold's properties; uncertainties related to the possible recalculation of, or reduction in WiaGold's minerals resources; uncertainties related to the outcome of studies; uncertainties relating to fluctuations in gold prices; the risk that WiaGold's title to its properties could be challenged; risks related to WiaGold's ability to attract and retain qualified personnel, uncertainties related to general economic and global financial conditions; uncertainties related to the competitiveness of the industry; risk associated with WiaGold being subject to government regulation, including changes in regulation; risks associated with WiaGold being subject to environmental laws and regulations, including a change in regulation; risks associated with WiaGold's need for governmental licenses, permits and approvals; uninsured risks and hazards; risk related to the integration of businesses and assets acquired by WiaGold; risk associated with WiaGold having no history of earnings or production revenue; risks associated with fluctuation in foreign exchange rates; risks related to default by joint venture parties (if any), contractors and agents, inherent risks associated with litigation; risk associated with potential conflicts of interest; risk related to effecting service or process on directors resident in foreign countries; uncertainties related to WiaGold's limited operating history; risks related to WiaGold's lack of a dividend history; risks relating to short term investments; and uncertainties related to fluctuations in WiaGold's share price.

WiaGold's forward-looking statements are based on the assumptions, beliefs, expectations and opinions of management as of the date hereof and which WiaGold believes are reasonable in the circumstances, but no assurance can be given that these expectations will prove to be correct. These assumptions include but are not limited to that WiaGold's exploration of its properties and other activities will be in accordance with WiaGold's public statements and stated goals, that there will be no material adverse change affecting WiaGold or its properties, anticipated

costs and timing for WiaGold's activities and such other assumptions as set out herein.

Such forward looking statements/projections are estimates for discussion purposes only and should not be relied upon. They are not guarantees of future performance and involve known and unknown risks, uncertainties and other factors many of which are beyond the control of the Company.

The forward-looking statements/projections are inherently uncertain and may therefore differ materially from results ultimately achieved.

The Company does not make any representations, provides no warranties concerning the accuracy of the forward looking statements and disclaims any obligation to update or revise any forward-looking statements based on new information, future events or otherwise except to the extent required by applicable laws.

Mineral Resource Estimate

The information in this presentation that relates to the mineral resource estimate for the Kokoseb Project was reported in an announcement dated 16 April 2024. The Company confirms that it is not aware of any new information or data that materially affects the information included in the original market announcement and that all material assumptions and technical parameters underpinning the mineral resource estimate in that announcement continue to apply and have not materially changed.

Previously Reported Results

There is information in this presentation relating to exploration results which were previously announced, the dates of which are referenced in the presentation. The Company confirms that it is not aware of any new information or data that materially affects the information included in the original market announcements.

Corporate snapshot

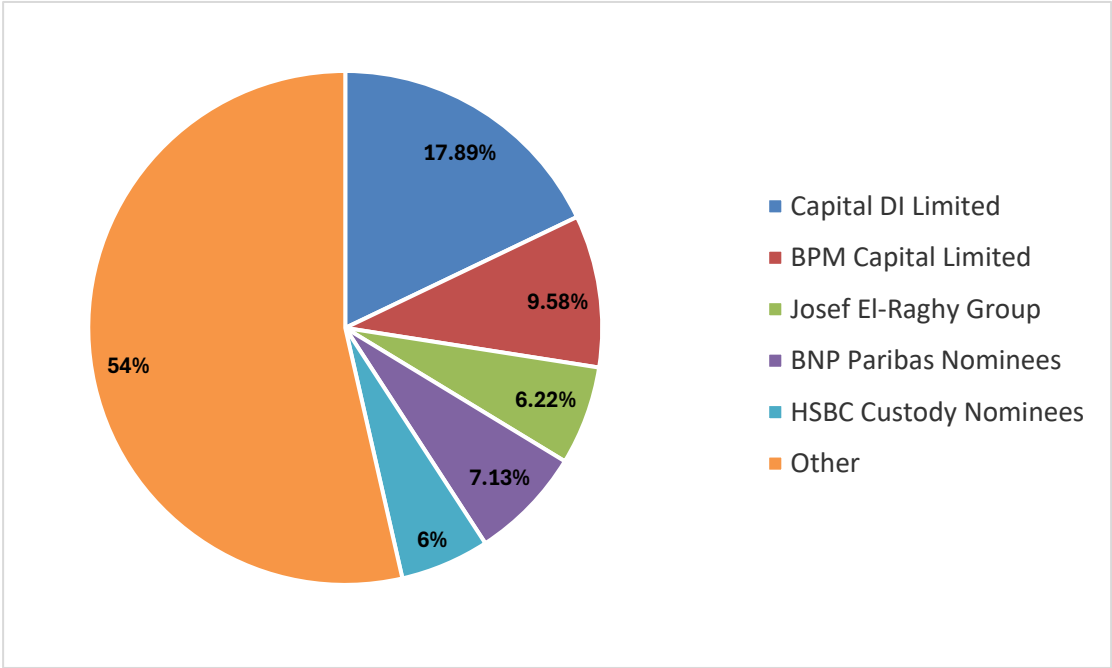
ASX: WIA

Capital Structure

Share price (A\$/share) ¹	0.14
Total shares in issue – pro-forma (M) ²	1,358
Options and performance rights – pro-forma (M) ³	72.3
Market cap (A\$M, undiluted)	190.1
Cash – pro-forma (A\$M) ⁴	41
Debt (A\$M) ⁴	Nil

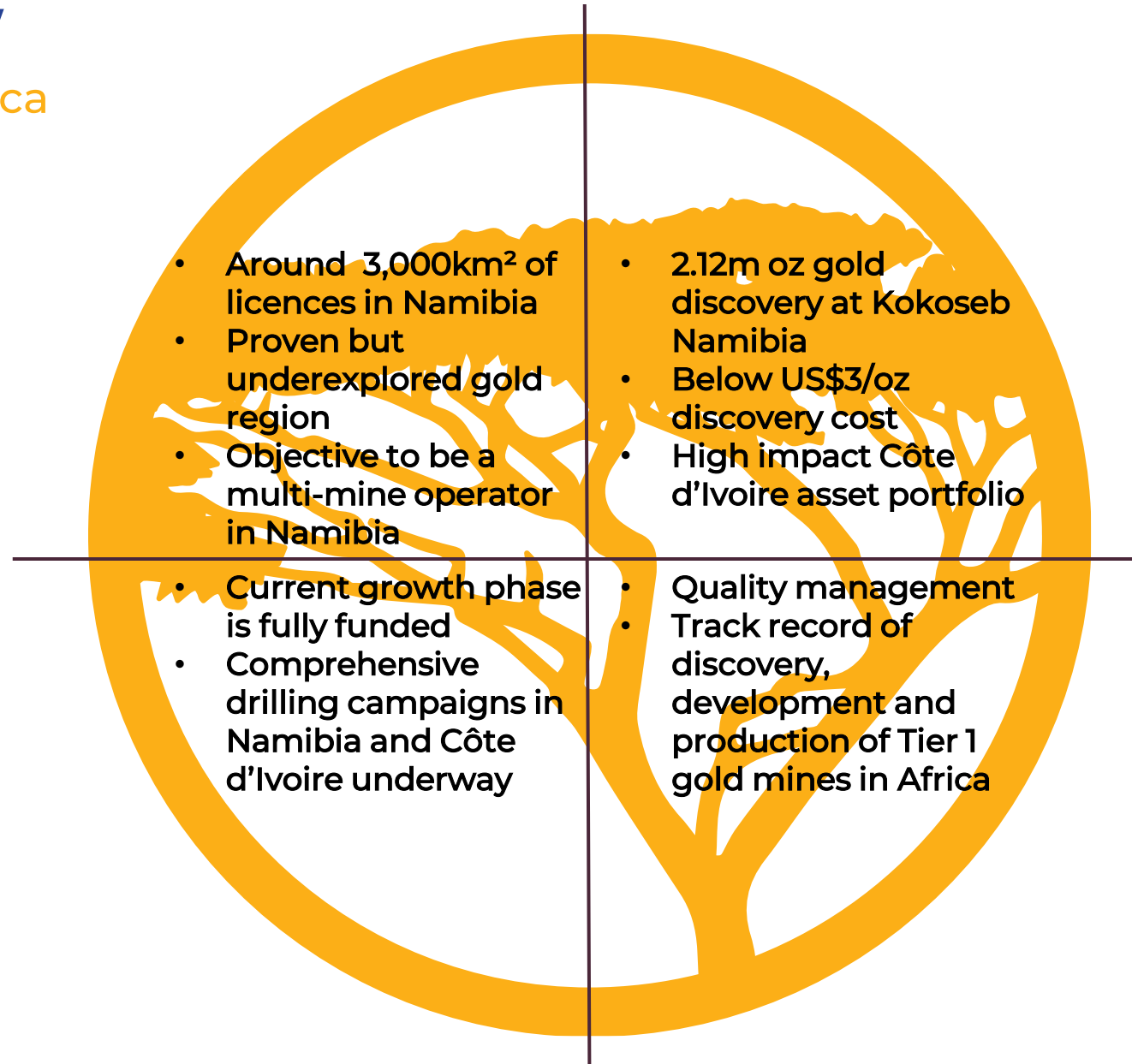
1. At 20 November 2024 (closing price)
2. At 21 November 2024 and includes November placement assuming shareholder approval for director's participation
3. At 21 November 2024, 39.3 million options with various strikes and expiries, and 33 million performance rights with various milestones
4. At 30 September 2024 plus November placement (including director participation) less fees

Register Composition



Company Overview

Targeted strategy in Africa



Board and key management

Experienced leadership team with a proven track record of discovery

Josef El-Raghy
Executive Chair



Previously Chairman and CEO of Centamin Plc, a gold miner that he guided from exploration, development and into production, which saw its market cap to grow from US\$20 million to \$4bn. This journey included a listing on the LSE, and today it is the longest standing gold producer listed in the FTSE 250 index. Josef is currently Non-Exec Chair of AIC Mines, a gold and copper producer in Queensland.

Andrew Pardey
Non-Executive Director



Currently Managing Director at Predictive Discovery, which is developing the largest gold discovery in West Africa for the past decade, Andrew has over 30 years' experience in exploration, project development and operations. Previously CEO of Centamin Plc (2015-19), he has held senior positions in Africa as part of Guinor Gold Corporation and Ashanti Goldfields, now AngloGold Ashanti.

Mark Arnesen
Non-Executive Director



Mark is a Chartered Accountant with over 30 years' experience in the international resources industry and extensive expertise in the structuring and negotiation of finance for major resource projects. Mark has held executive roles with Billiton/Gencor, AngloGold Ashanti, Equinox Minerals Limited, Gulf Industrials Limited and Nzuri Copper Limited.

Scott Funston
Chief Financial Officer



Scott has a broad range of resource industry experience through all facets of the mining cycle from acquisition, exploration, discovery, feasibility, financing, construction and operations. Scott has proven executive level experience in several ASX listed public companies operating in a variety of diverse countries and cultures having assisted several resources companies operating throughout Australia, South America, Asia, USA, and several years with African based companies.

Pierrick Couderc
Exploration Manager



Pierrick has over 20 years' experience in a range of commodities and geological settings. Most recently, he served as the Côte d'Ivoire Exploration Manager for Centamin Plc. Notably, he led the team which discovered the 5.4Moz Doropo Project and the 2.2Moz ABC Project. Pierrick is a French national and fluent in both English and French.

Matthew Foy
Company Secretary



Matthew is a highly qualified chartered secretary and a Fellow of Governance Institute Australia. With over 15 years of experience, he brings a wealth of knowledge in public company compliance, ASX Listing Rules, transactions, and governance.

Management track record in African gold mining

Tier 1 gold mine experience in Africa

Siguiri, Guinea

Development and production
Built in 2005 by AngloGold Ashanti
Production of 200-250koz/pa

Bankan, Guinea

Discovery, development
3+m oz reserve
5+m oz resource
PFS published (June '24)

Doropo, Côte d'Ivoire

Discovery, development
1.9m oz reserve
5+m oz resource
DFS published (July '24)

Kokoseb, Namibia
Discovery
2.12m oz resource

Lefa, Guinea

Built in 2008 by Crew Gold
Production of C. 200-250koz/pa

Sukari, Egypt

Discovery, development, production started in 2009
6m oz produced to date
9m oz resource remaining

Track record

- Discovered many gold mines in Africa, which have produced 11m+ oz, 21m+ reserves/resources





Kokoseb & Namibia



POLITICALLY STABLE & MINER FRIENDLY

- Stable democracy, independent judiciary, diverse economy
- Political and social support of mining with stated ambitions to develop mineral resources
- Namibia is a low-risk jurisdiction, ranked 26/62 by the Fraser Institute 2022 Survey of Mining Companies for policy attractiveness (above British Columbia, Queensland, Victoria, Yukon and Guyana)

OUTSTANDING INFRASTRUCTURE

- The Kokoseb project has road access from the capital Windhoek
- Benefiting from access to modern port, rail and power

NAMIBIA'S GOLD DISTRICT

- Kokoseb joins producing QKR's Navachab, B2Gold's Ochjikoto, and Osino's Twin Hills (DFS) and Ondundu (exploration) projects in a rapidly growing gold district

LONG ESTABLISHED MINING INDUSTRY

- Major revenue earner & employer in Namibia (8% of GDP, 40% of foreign earnings)
- Stable tax code and fair fiscal terms (37.5% tax, 3% royalty, 1% export levy, 14% VAT)
- Current and former in-country mining producers (gold, diamonds, uranium copper & industrial metals)



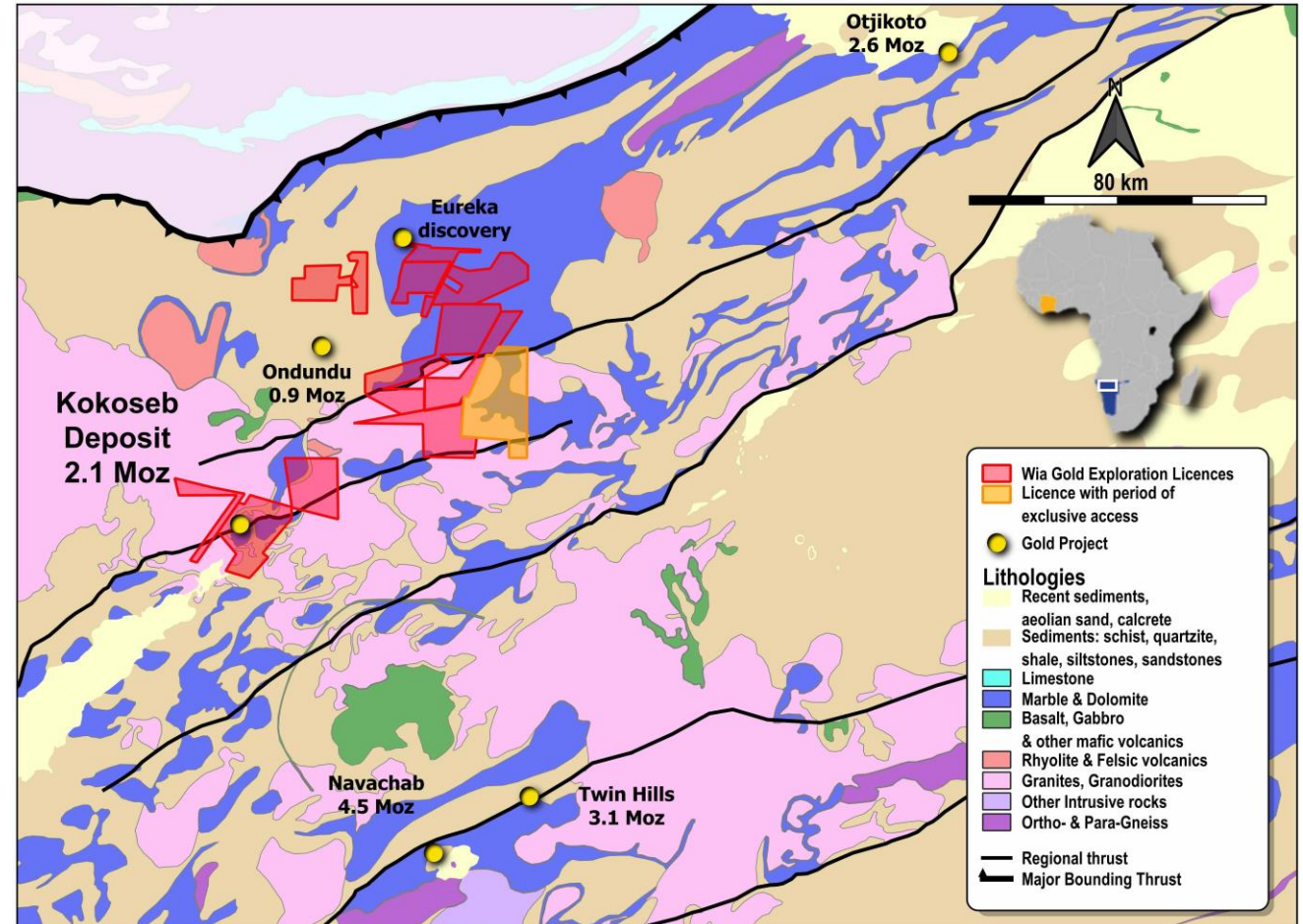
Wia Gold – Namibia licences

Fast growth license holder in proven gold jurisdiction

Exploration licenses covering about 3,000km², including 500km² under application

Lies within the Pan-African Damara Orogenic Belt which is largely underexplored for gold mineralisation

Gold deposits style sediments hosted, structurally controlled



Rapidly developing gold company in Namibia

June 2019: Entered a JV with Epangelo to acquire Okombahe exploration licence in Namibia

Q3 2021: Significant soil anomaly discovered at Kokoseb

Q2 2022: Maiden DD drilling campaign of 1,750 metres

May 2023: Maiden inferred resource of 1.3m oz @ 1.0gpt

April 2024: MRE inferred resource increase by 63% to 2.12m oz @ 1.0gpt

Q2 2025: Updated MRE expected

Rapid development of Kokoseb – from soil sampling to MRE of 2.12m/oz in 3 years

September 2020: Management change A\$7m raised for initial exploration programme

October 2022: Raised A\$6.6m for maiden resource drilling programme

August 2023: Raised A\$11m

May 2024: Raised A\$17m

November 2024: Raised A\$30m

Transformational Kokoseb gold discovery

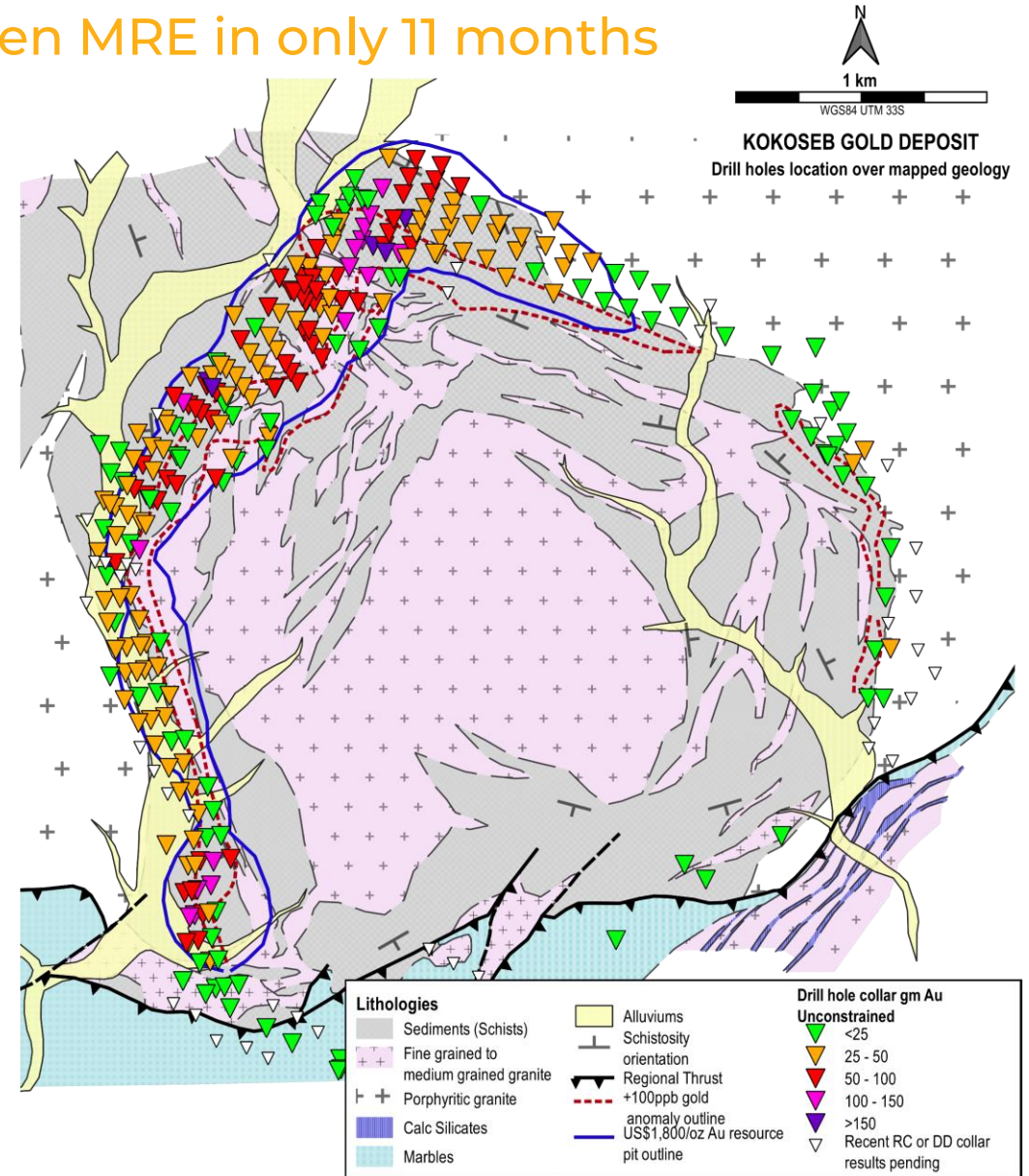
Updated MRE represents 63% increase from Maiden MRE in only 11 months

Inferred Mineral Resource Estimate

2.12 Moz at 1.0 g/t Au
at 0.5 g/t cut-off¹

- Simple Open pit:
 - Outcropping mineralisation, with max. of 2m cover
 - Average weathering depth of ~30m
- Large, contiguous gold deposits:
 - Updated MRE includes higher-grade 1.53 Moz at 1.4 g/t Au (at 0.8 g/t cut-off) from 47km of drilling
 - Discovery and definition cost of only US\$2.8/oz
- Simple metallurgy:
 - Metallurgical testwork concluded gold recoveries of 92%¹
 - Leach kinetics were rapid with majority of gold leaching in 2 - 4 hours

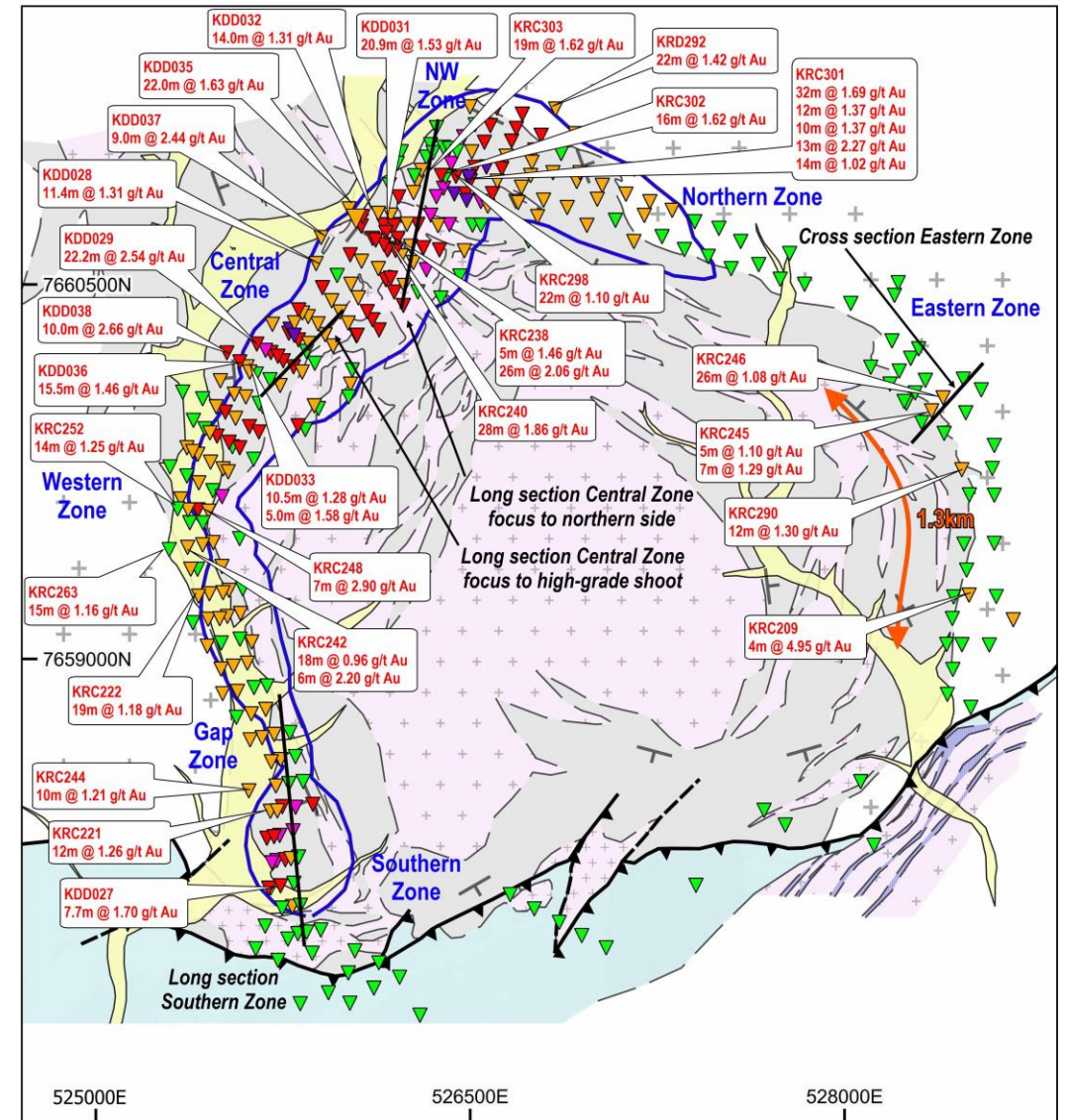
1. Refer to Appendix A and ASX announcement 16 April 2024. WIA confirms that it is not aware of any new information or data that materially affects the information included in those releases. All material assumptions and technical parameters underpinning those releases continues to apply and has not materially changed.



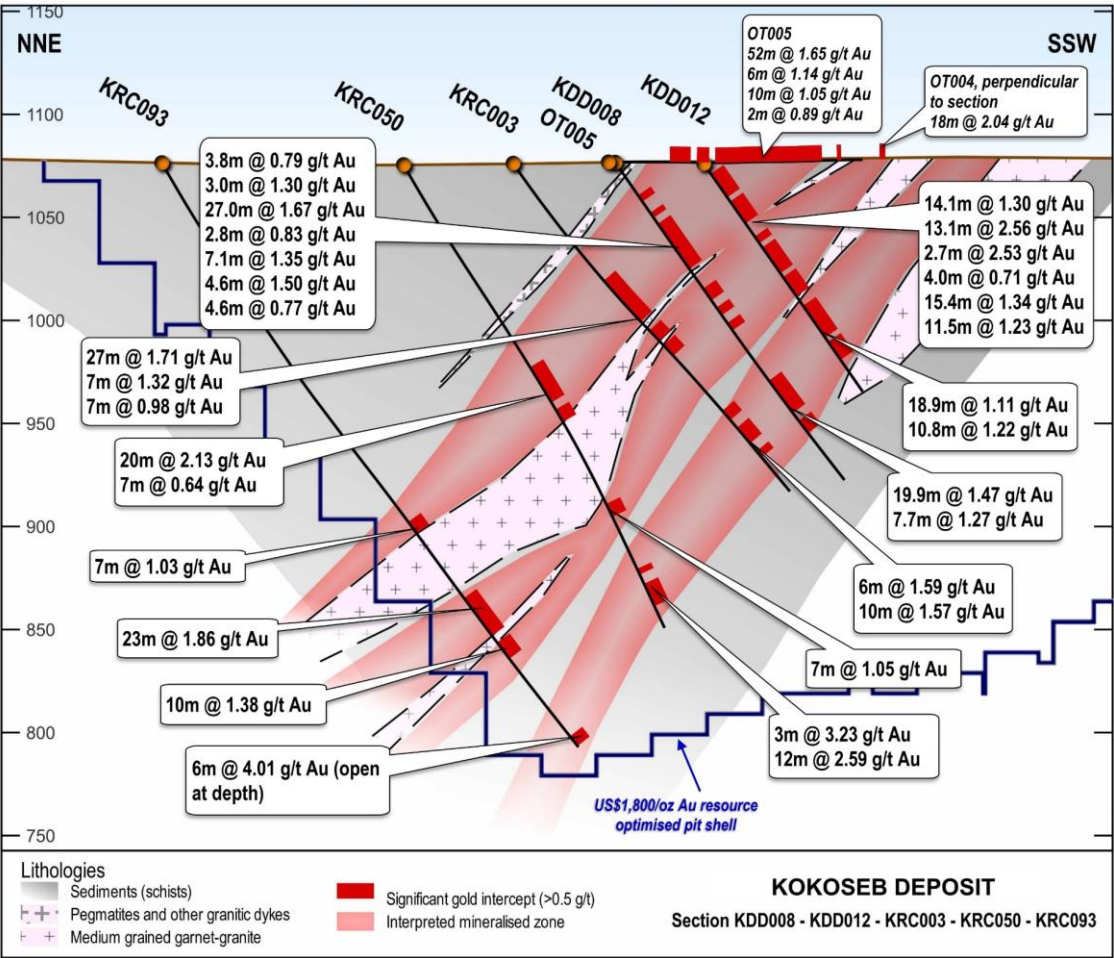
Drilling since MRE demonstrates continued growth

Results continue to reveal continuity of mineralisation along 4.8km of strike

- NW Zone define a tight fold hinge with significant intercepts including:
 - 32m at 1.69 g/t Au from 104m in KRC301
 - 13m at 2.27 g/t Au from 201m in KRC301
 - 16m at 1.62 g/t Au from 113m in KRC302
 - 20m at 1.59 g/t Au from 102m in KRC303
- Diamond drillholes across the Central Zone have returned:
 - 22.0m at 1.63 g/t Au from 421.2m in KDD035
 - 10.0m at 2.66 g/t Au from 476.0m in KDD038
- Mineralisation extended at the Central Zone, with significant intercepts including:
 - 22.2m at 2.54 g/t Au from 361.5m in KDD029
 - 20.9m at 1.53 g/t Au from 287.9m in KDD031
 - 5.0m at 3.38 g/t Au from 352.6m in KDD034
 - 26m at 2.06 g/t Au from 165m in KRC238
 - 28m at 1.86 g/t Au from 236m in KRC240
- Mineralisation discovered at the Eastern Zone, with significant shallow open intercepts:
 - 7m at 1.29 g/t Au from 61m in KRC245
 - 26m at 1.08 g/t Au from 101m in KRC246
 - 4m at 4.95 g/t Au from 80m in KRC209



A Discovery from Basic Surface Exploration

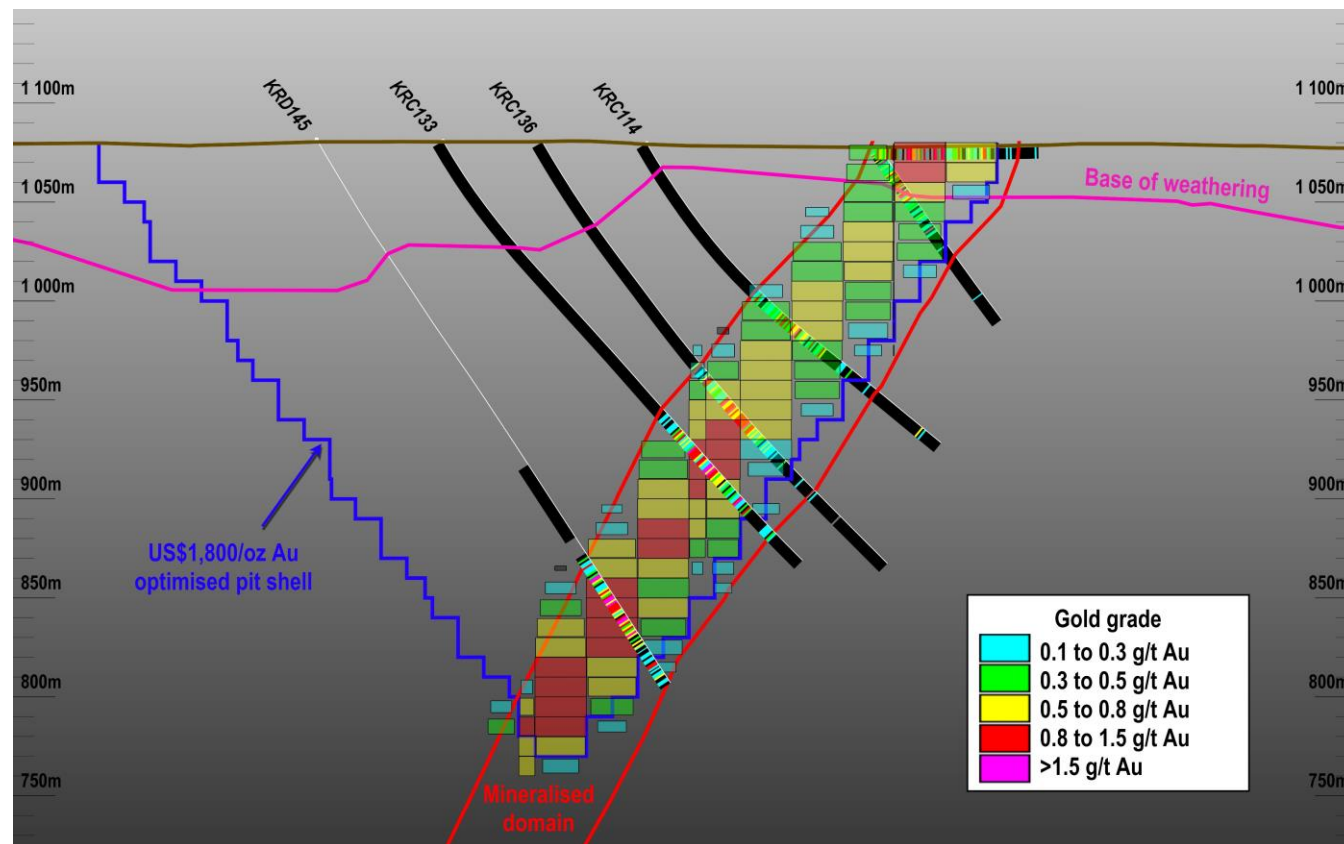


1. Refer Appendix A and ASX announcement 16 April 2024. WIA confirms that it is not aware of any new information or data that materially affects the information included in those releases. All material assumptions and technical parameters underpinning those releases continues to apply and has not materially changed.

Readily open-pittable gold mineralisation

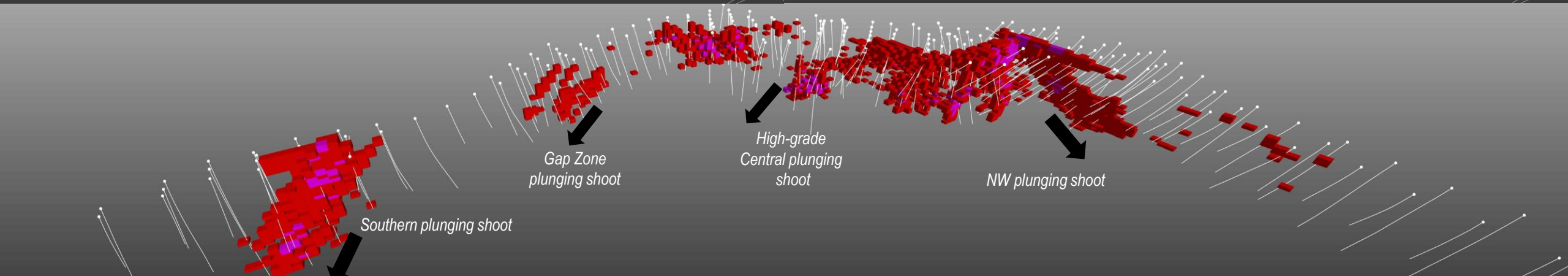
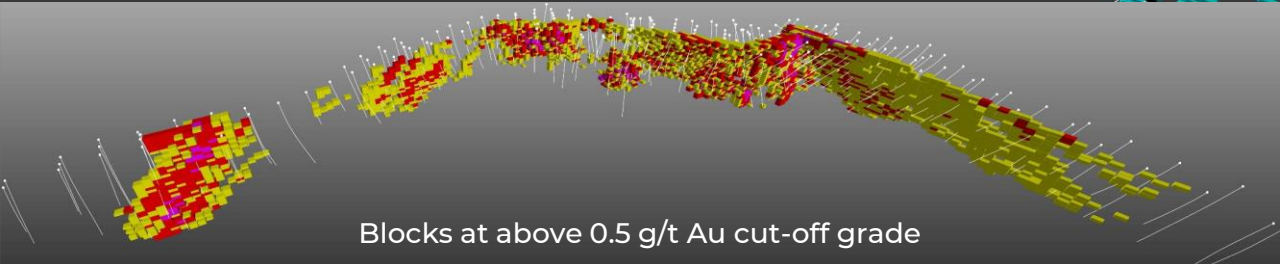
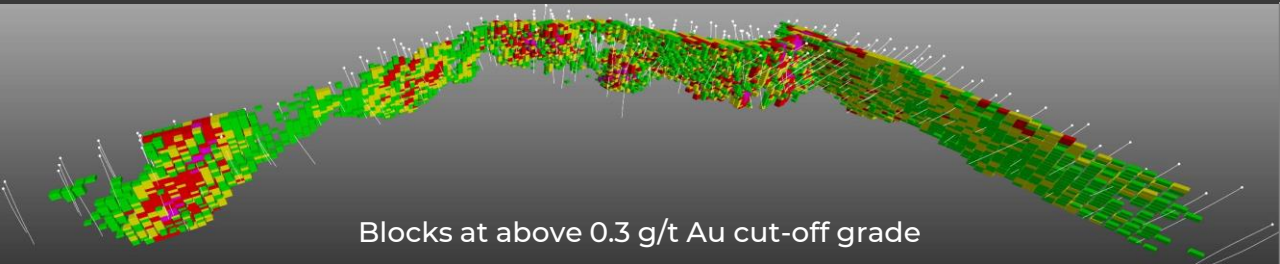
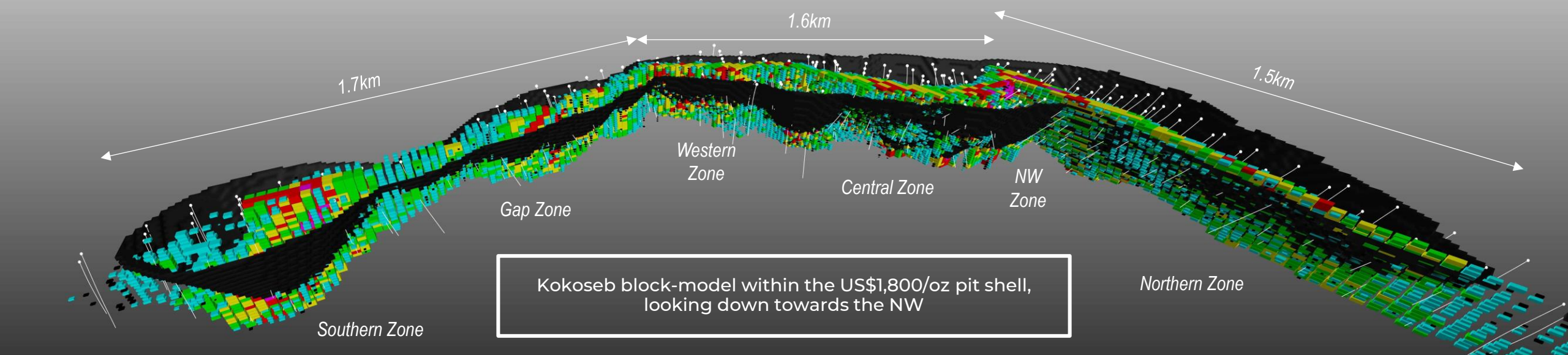
Plus 90% gold recoveries under conventional process coupled with solid MIK MRE

- MRE covers cumulative 4.8km strike and maximum depth of approx. 370m
- Outcropping mineralisation, with max. of 2m cover
- Average weathering depth of ~30m
- **Metallurgical testwork concluded gold recoveries of 92%¹**
- Complete sample leach testing; target grind of P80 75µm followed by gravity recovery and direct cyanidation leach
- Leach kinetics were rapid with majority of gold leaching in 2 - 4 hours



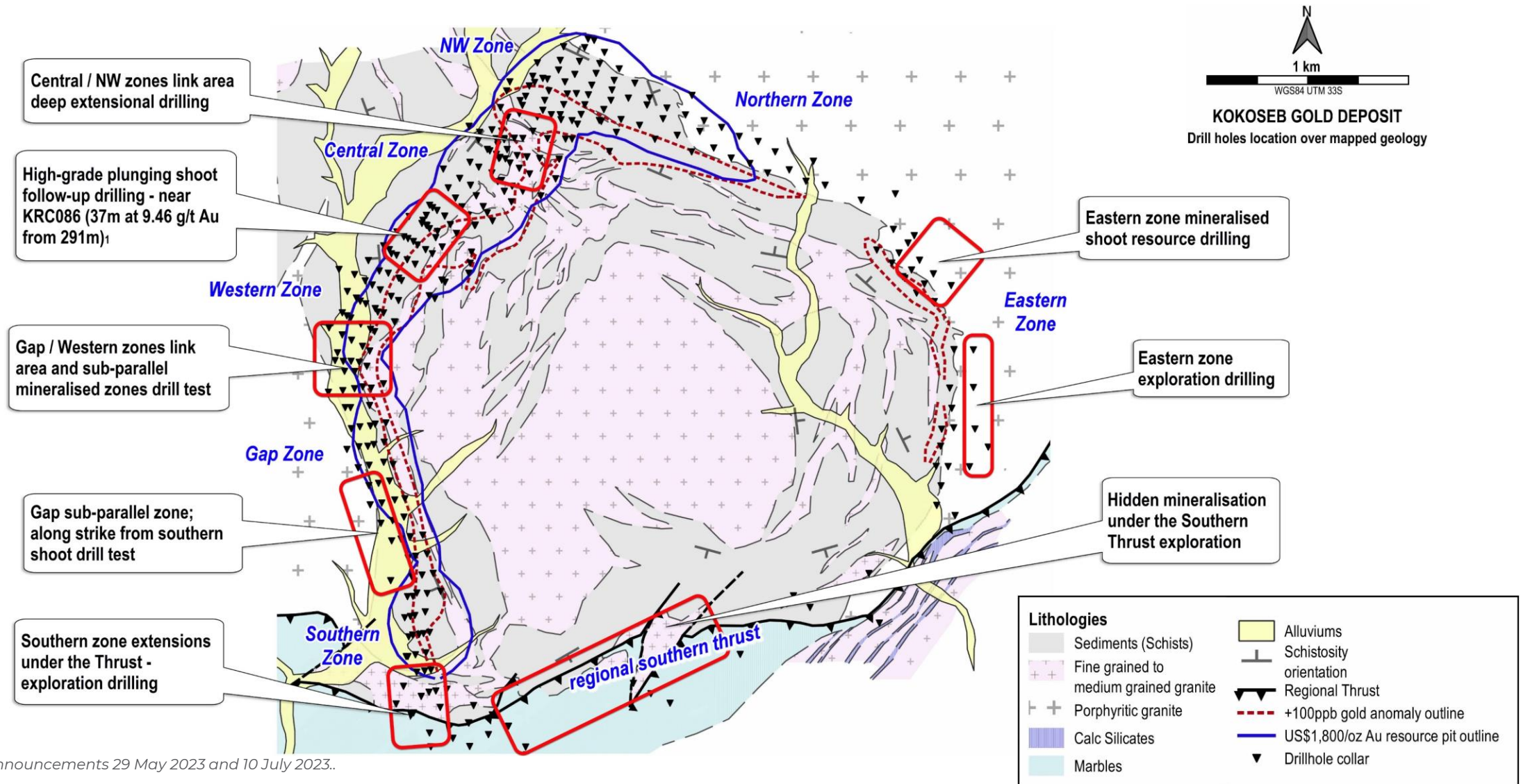
1. Refer to Appendix A, and ASX announcement 16 April 2024. WIA confirms that it is not aware of any new information or data that materially affects the information included in those releases. All material assumptions and technical parameters underpinning those releases continues to apply and has not materially changed.

Continuous pit shell along 4.8km strike



Kokoseb – target MRE uplift

Multi rig scenario rapidly proving extent of scale at Kokoseb - open along strike and at depth



The background image shows a mining operation in a tropical setting. In the foreground, there is a large blue semi-transparent graphic element consisting of two overlapping shapes. Behind this, a yellow mining vehicle is visible in a field of tall grass. In the background, there is a dense forest of green trees under a cloudy sky. A white pickup truck is partially visible on the right side.

Côte d'Ivoire

Côte d'Ivoire project portfolio

Strategically located blocks

A. Mankono Project

Mankono Quest permit granted, five additional permits under application. Two extensive gold anomalies defined¹

B. Bouaflé Project

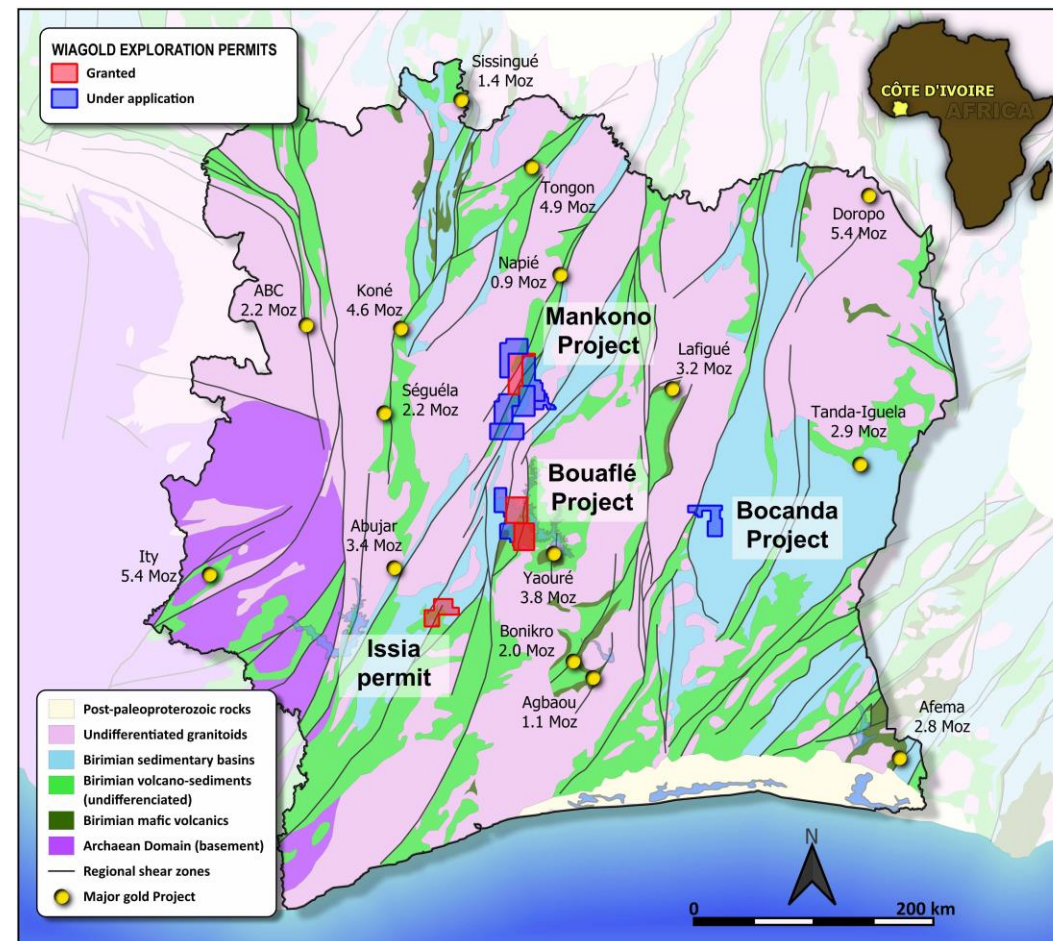
Bouaflé Sud and Bouaflé Nord permits granted, plus additional application. Significant +17km mineralised shear zone in Bouaflé Sud², historically underexplored

C. Bocanda Project

Bocanda Nord, Bocanda permit granted. Initial stream sediment sampling across granted permits identified three large gold targets for follow-up work³

D. Issia Project

Issia permit granted, plus additional application. Surface sampling (soils, gold and multi element assays) underway



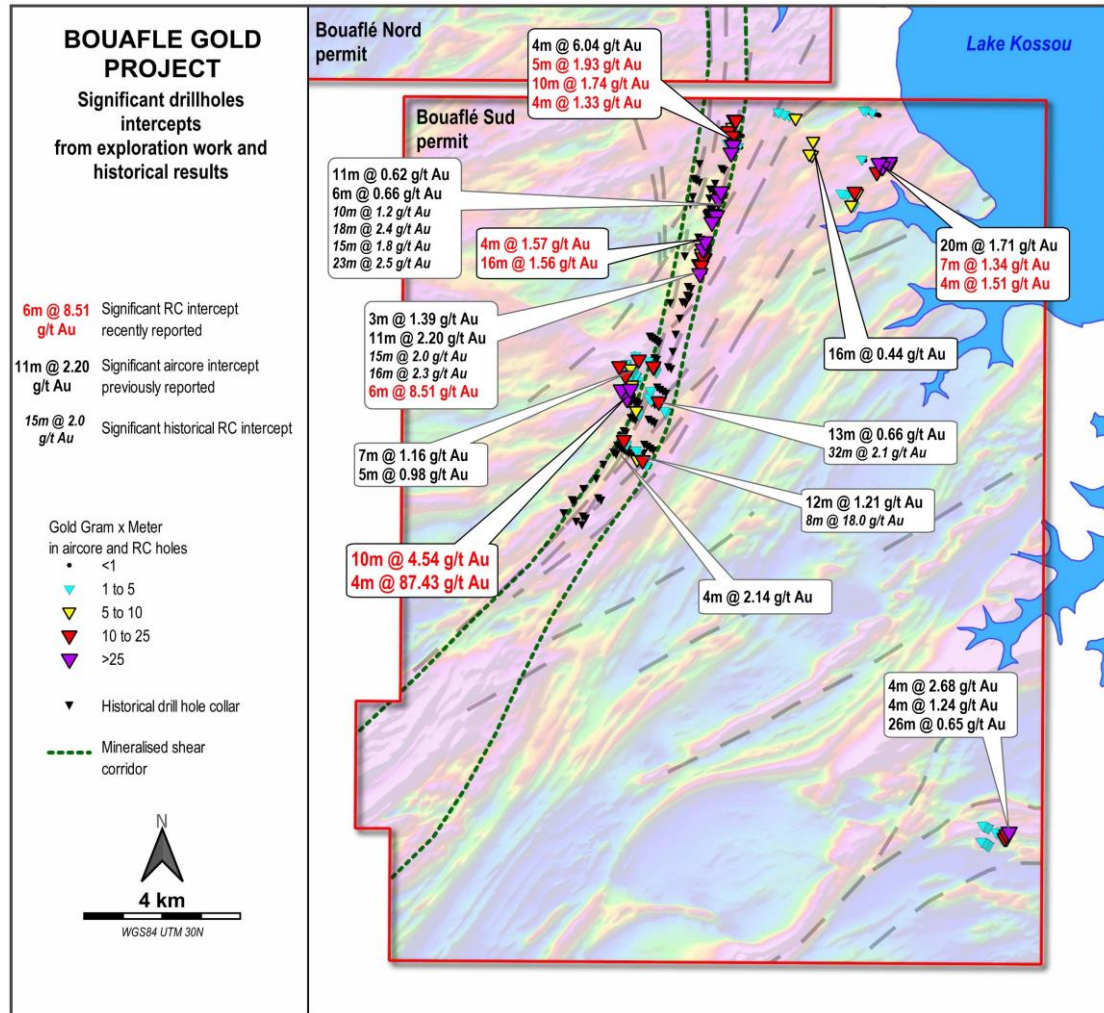
1. ASX announcements 21 September 2021 and 23 November 2021

2. ASX announcement 17 November 2020

3. ASX announcement 30 August 2021

Finding the next Kokoseb – Côte d'Ivoire

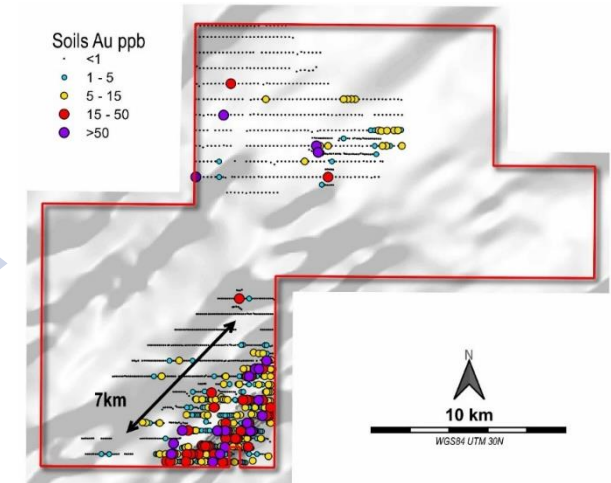
Multiple gold mineralised trends identified at Issia and Bouaflé



10,000m follow-up RC drilling post air core drilling intercepts at the **Bouaflé Project**, including 2 high-grade gold intercepts (with a gabbro):

- 4m at 87.43 g/t Au¹
- 10m at 4.54 g/t Au¹
- 6m at 8.51 g/t Au¹
- 16m at 1.56 g/t Au¹
- 12m at 1.21 g/t Au²
- 7m at 1.16 g/t Au²
- 9m at 2.63 g/t Au²

New 7km-long strongly anomalous corridor delineated from soil sampling program at the **Issia Project**



1. Refer ASX announcement dated 2 September 2024

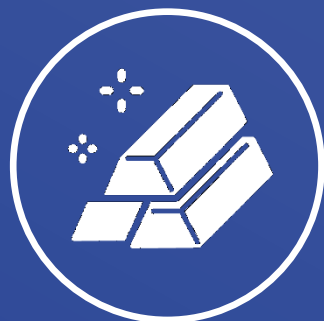
2. Refer ASX announcements dated 29 September 2022 and 22 January 2024 for information on the results shown for the Bouaflé Project.



WIA GOLD

INVESTMENT HIGHLIGHTS

WIA: ASX



Transformational
Kokoseb gold
discovery

Updated MRE 2.12 Moz at
1.0 g/t Au with super low
<US\$3/oz definition cost



Growth drilling to
drive substantial
targeted MRE uplift

Aggressive further
growth drilling
delivering strike and
depth success



Straightforward
metallurgy and
process route

Preliminary met
testwork delivers
over 91% gold
recoveries



Established, well
recognised mining
jurisdiction

Stable jurisdiction,
excellent infrastructure
attracting significant
investment capital



Strategic
exploration
project pipeline

Four permitted
prospect areas in
Côte d'Ivoire with
drill-ready targets

Contact details

Level One

130 Hay Street, Subiaco
WA 6009 Australia

E: info@wiagold.com.au

E: WIA@buchanancomms.co.uk

Investor Relations/Media enquiries



Kokoseb MRE April 2024

Cut off (Au g/t)	Tonnes (Mt)	Au (g/t)	Au (Moz)
0.20	130	0.69	2.88
0.25	115	0.75	2.77
0.30	100	0.80	2.57
0.40	83	0.91	2.43
0.50	66	1.0	2.12
0.60	53	1.2	2.04
0.80	34	1.4	1.53
1.00	23	1.7	1.26



1. Refer to ASX announcement 16 April 2024. WIA confirms that it is not aware of any new information or data that materially affects the information included in those releases. All material assumptions and technical parameters underpinning those releases continues to apply and has not materially changed.



WIAGOLD