



# Investor Presentation

MUSTANG & LITHIC LITHIUM PROJECTS, NEVADA USA

MONJEBUP RARE EARTH PROJECT, WA

August 2023

ASX: RMX

Exploring for critical  
and new world metals





## DISCLAIMER



Information in this presentation is for general purposes only, and is not an offer, recommendation, or invitation for investment in, or purchase of, Company securities; includes statements relating to past performance, which should not be regarded as a reliable indicator of future performance; and may contain information from third parties believed to be reliable; however no representations or warranties are made as to the accuracy or completeness of such information. All currency amounts are in AUD unless otherwise stated.

In relying on the mentioned ASX announcements within this presentation and pursuant to ASX Listing Rule 5.23.2, the Company confirms that it is not aware of any new information or data that materially affects the information included in the above-mentioned announcements.

### Competent Persons Statement

The information in this announcement that relates to Exploration Results and other technical information complies with the 2012 Edition of the Australasian Code for Reporting of Exploration Results, Mineral Resources and Ore Reserves (**JORC Code**) and has been compiled and assessed under the supervision of Mr Mark Mitchell. Mr Mitchell is a Member of the Australasian Institute of Mining and Metallurgy and the Australasian Institute of Geoscientists. He has sufficient experience that is relevant to the style of mineralisation and type of deposit under consideration and to the activity being undertaken to qualify as a Competent Person as defined in the 2012 Edition of the JORC Code. Mr Mitchell consents to the inclusion in this announcement of the matters based on his information in the form and context in which it appears. The Company is not aware of any new information or data that materially affects the information included in the relevant market announcements.



## COMPANY SNAPSHOT



### Mustang Lithium Project, Nevada USA (RMX 100%)

- Recent high grade lithium discovery from near surface
- Most impressive intercept 48.77m @ 687ppm Li from ~3 metres <sup>1</sup>
- Discovery located in greenfields nature of Mustang tenure
- Lithium intercepts open to north and north-west of property
- Phase 2 drilling to expand and investigate further lithium potential towards the north

### Lithic Lithium Project, Nevada USA (RMX 100%)

- Lithium assay values to high of 1,518ppm Li from latest surface sampling <sup>2</sup>
- 10 samples obtained with lithium values over 1000ppm
- Latest sampling results provide added confidence for a fully funded drill program
- Determination of initial drill targets underway
- Application for drill permit to be submitted shortly to the Nevada BLM

### Monjebup Rare Earth Project, Western Australia (Farm-in 80%)

- Attractive farm-in to earn 80% of project from Lontown Resources (ASX: LTR)
- Previous surface sampling obtained TREO results up to 969ppm
- Field exploration expected to commence this quarter subject to land access agreements

<sup>1</sup> <https://announcements.asx.com.au/asxpdf/20230712/pdf/05rk81nv435t5.pdf>

<sup>2</sup> <https://announcements.asx.com.au/asxpdf/20230801/pdf/05s68x5f292m0y.pdf>

### Capital Structure

Shares on Issue (Pre Placement):	2.312 bn
Share Price (02/08/2023):	0.4 cent
Market Capitalisation:	\$9.2m
Cash Position (as at 30/06/23):	~\$1.03m
Investments:	1.7m shares (LSE: BMV)
Enterprise Value:	~\$8.2m







## NEVADA LITHIUM PROJECTS MUSTANG & LITHIC (RMX 100%)

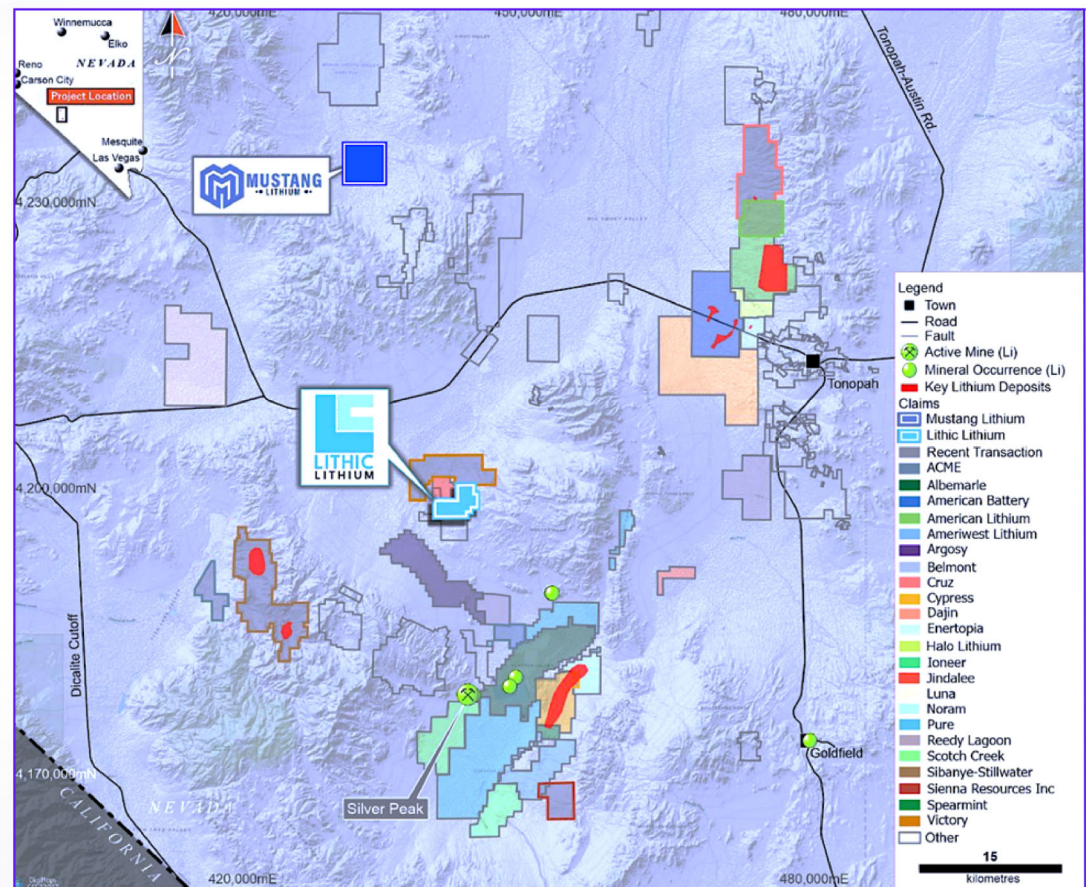


### Mustang Lithium Project

140 claims  
1,070 hectares  
RMX 100%

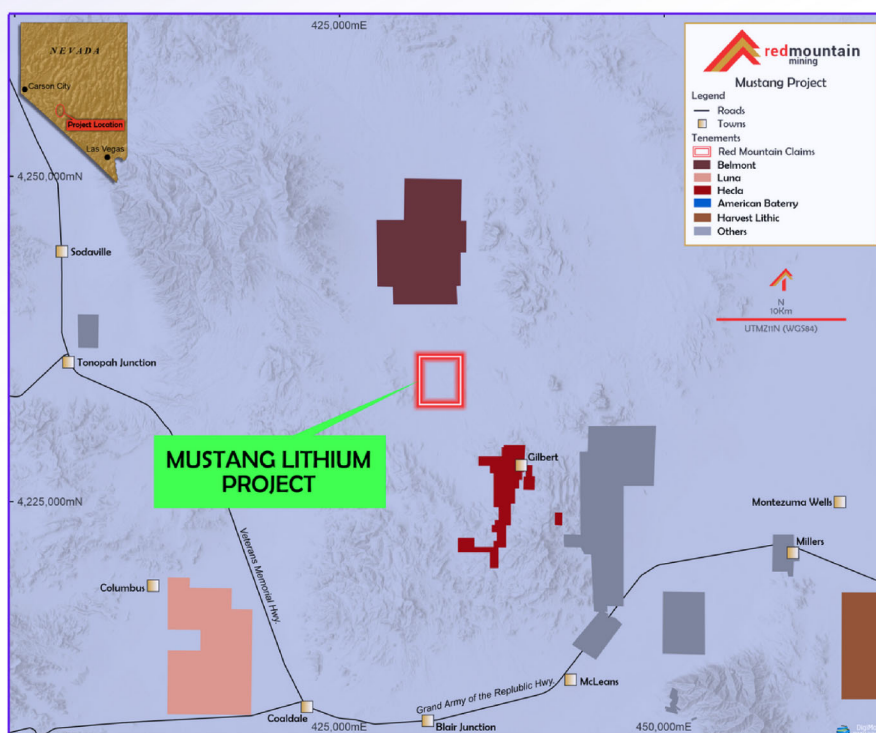
### Lithic Lithium Project

115 claims  
961 hectares  
RMX 100%





## MUSTANG LITHIUM PROJECT NEVADA USA (RMX 100%)



Located on south-east  
flank of the hydrologically  
closed Monte Cristo  
Valley

Project area expanded to  
**1070 hectares**, with  
additional staking  
planned

**Recent lithium discovery  
on greenfields nature of  
project tenure** provides  
ample confidence for  
further test drilling to  
determine lithium potential  
and commence building a  
considerable resource

Similar host rocks found  
at American Lithium's TLC  
deposit & Century  
Lithium's Clayton Valley  
deposit



## MUSTANG LITHIUM PROJECT NEVADA USA (RMX 100%)

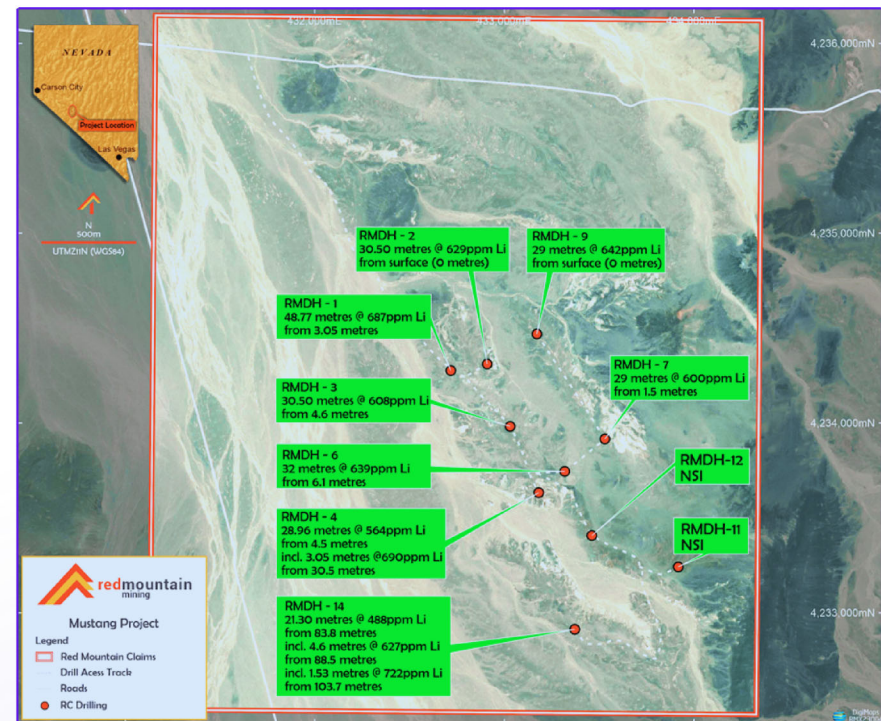


Recent phase 1 **lithium discovery**  
intercepted thick, consistent high grade  
lithium claystones

**7 of 10 drillholes** intersected lithium  
mineralisation **from or near surface**

Lithium intercepts **open** to the north-west  
and north

**Phase 2 drilling planned** to expand further  
lithium potential and commence building  
JORC resource



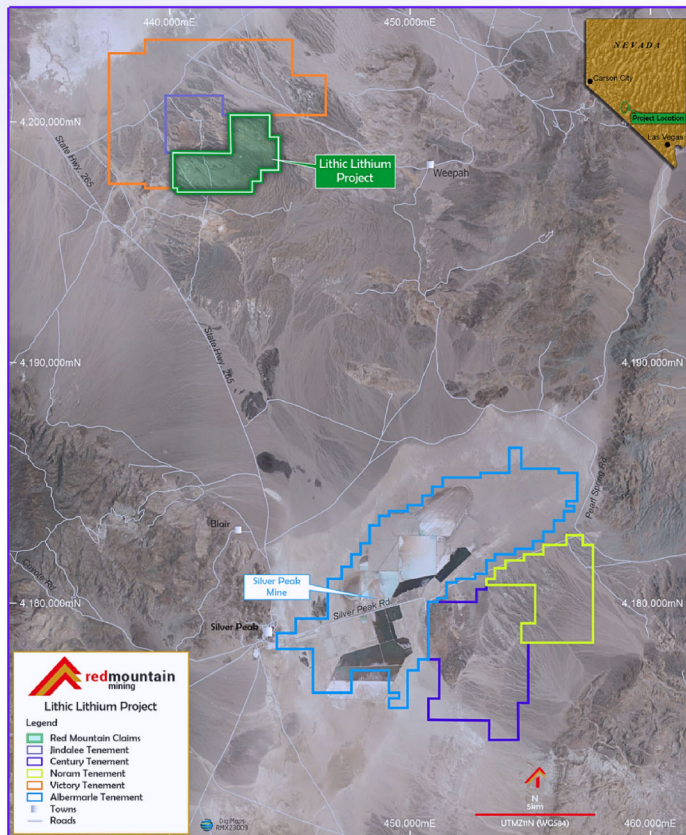
\*Refer to RMX announcement dated 12 July 2023 "High Grade Lithium Discovery From Near Surface at Mustang"

<https://announcements.asx.com.au/asxpdf/20230712/pdf/05rk81lnv435t5.pdf>





## LITHIC LITHIUM PROJECT NEVADA USA (RMX 100%)



Located **29km north of Silver Peak**, the only producing lithium mine in the USA

**Adjoins Jindalee's (ASX: JRL) Clayton North Project** and Victory Battery Metals' Smokey Lithium Project

Victory Battery Metals recently expanded Smokey Lithium property upon analysis of results of its positive drill program



## LITHIC LITHIUM PROJECT NEVADA USA (RMX 100%)

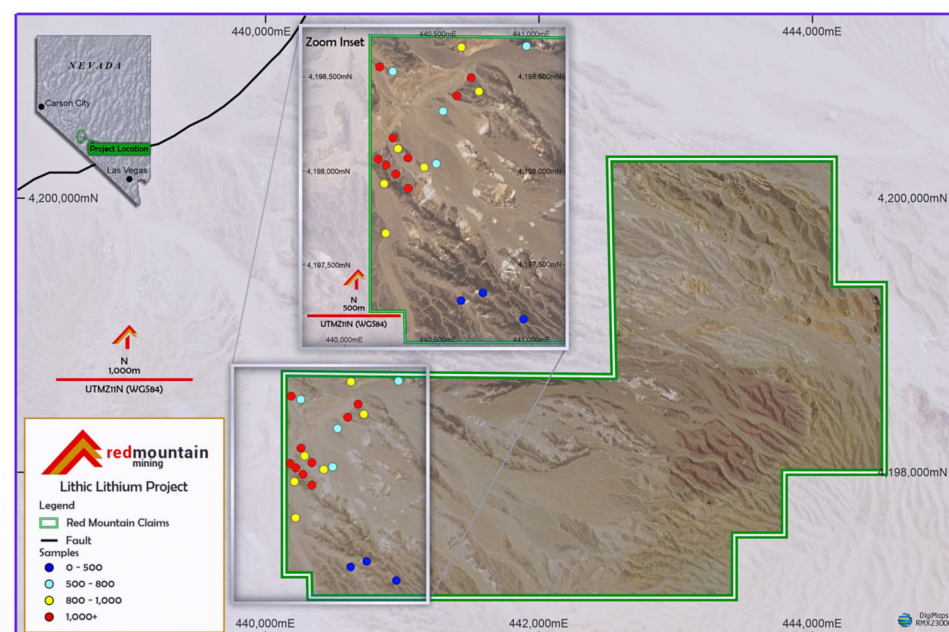


Latest surface sampling returned lithium assay values to a high of **1,518ppm Li<sup>3</sup>**

**10 samples** obtained from recent surface sampling with lithium values **over 1000ppm**

Results bolster confidence for a **fully funded maiden drill program**

Preparation for drill targeting underway



<sup>3</sup> <https://announcements.asx.com.au/asxpdf/20230801/pdf/05s68x5f292m0y.pdf>





## UPCOMING DRILLING MUSTANG & LITHIC LITHIUM PROJECTS



Drilling at both Mustang and Lithic planned for commencement toward the end of 3rd quarter

---

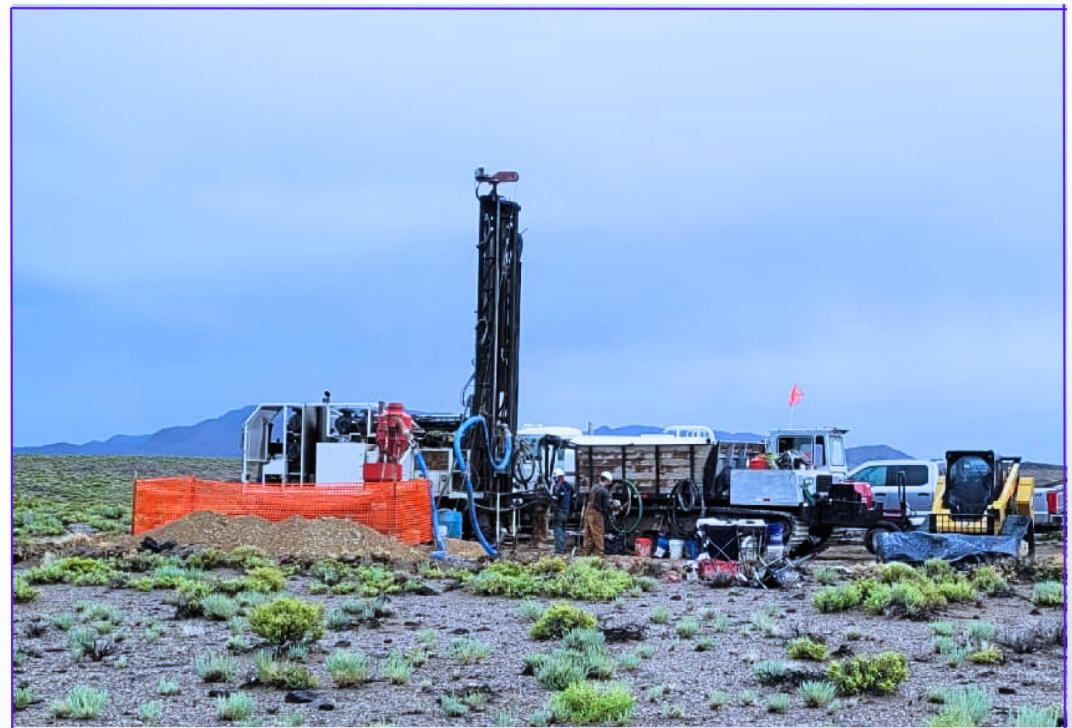
Further surface sampling planned at Mustang with focus towards north of Phase 1 drillholes to better determine drill targets

---

Planning for Lithic drill targets underway ahead of maiden drilling

---

Lithic drill permit application to be submitted shortly





## MONJEBUP RARE EARTH PROJECT (RMX FARM - IN 80%)



Farm-in agreement executed with **Liontown Resources (ASX: LTR)** for **80% interest** in project

---

Located in southern Western Australia,  
~80km north-east of Albany

---

Consists of three large exploration licenses  
E70/6042, E70/6043, E70/6044

---

Total project size **~910km<sup>2</sup>**





## MONJEBUP RARE EARTH PROJECT (RMX FARM - IN 80%)

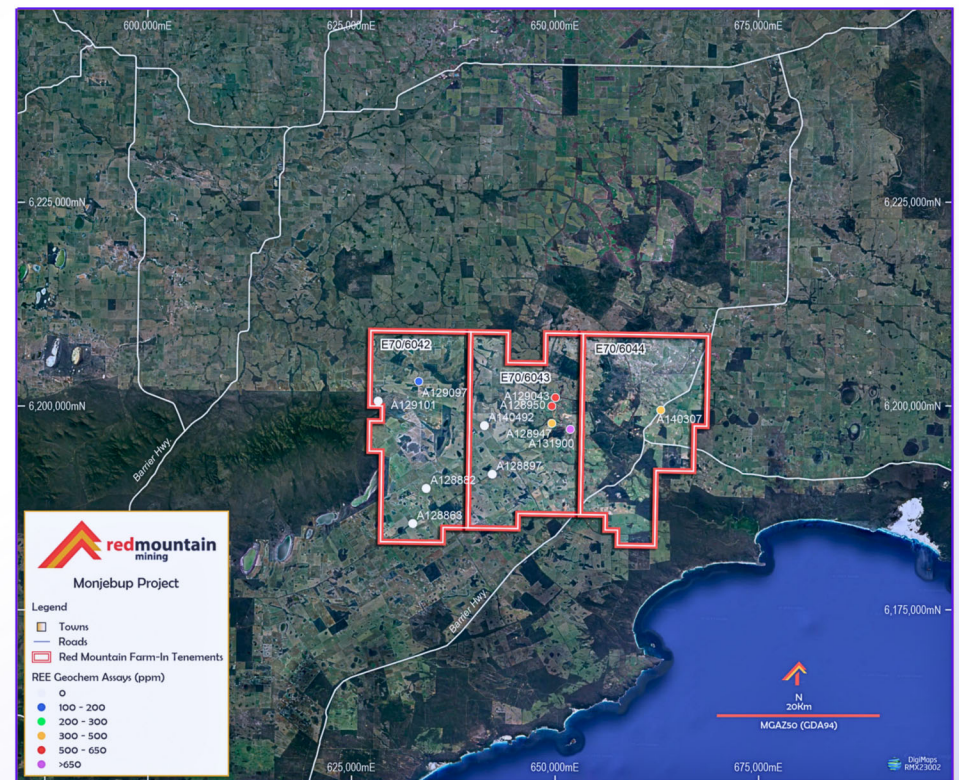


Liontown applied for the project tenements with intention to explore for **ionic clay REE potential**

Recent surface sampling by Liontown include **TREO results of up to 969ppm<sup>4</sup>**

Upcoming field exploration include grid sampling and metallurgical testwork

Preparations for exploration underway subject to securing access agreements



<sup>4</sup> <https://announcements.asx.com.au/asxpdf/20230710/pdf/05rgqsmz64710.pdf>



## RED MOUNTAIN NEAR TERM WORK PROGRAM



Completion of Monjebup farm-in with Liontown

COMPLETED

Additional Mustang tenure to be staked

AUGUST

Mustang Phase 2 exploration program:

Additional soil sampling

AUGUST

RC Drill targeting & planning

END OF Q3

Lithic RC Drill targeting & planning

AUGUST

Monjebup exploration work

Q3

Maiden drilling program for Lithic

Q3

Assays for Phase 2 drilling Mustang

Q4

Assays for Maiden drilling Lithic

Q4







RED MOUNTAIN MINING LTD ABN 40 119 568 106

**HEAD OFFICE** 38 COLIN ST, WEST PERTH  
AUSTRALIA 6005

EMAIL: [INFO@REDMOUNTAINMINING.COM.AU](mailto:INFO@REDMOUNTAINMINING.COM.AU)

[WWW.REDMOUNTAINMINING.COM.AU](http://WWW.REDMOUNTAINMINING.COM.AU)