

## Discovering Gold and Copper in NSW

Investor Presentation  
February 2025

Dan Power  
Managing Director

ASX: KNB



# Disclaimer

## General information only

This presentation contains general background information and summary information about Koonenberry Gold Limited (ACN 619 137 576) ("**Koonenberry**") and its activities as at the date of this presentation. None of the members of Koonenberry or their or Koonenberry's respective advisors, affiliates, related bodies corporate, directors, officers, partners, consultants, employees and agents ("Other Persons") have authorised, permitted or caused the issue, submission, dispatch or provision of this presentation and none of them makes or purports to make any statement in this presentation. To the maximum extent permitted by law, Koonenberry and the Other Persons expressly exclude and disclaim all liability, including without limitation for fault or negligence on the part of any person, or for any expenses, losses, damages or costs incurred as a result of the use of this presentation or its contents and the information in this presentation being inaccurate or incomplete in any way for any reasons, whether by negligence or otherwise.

To the maximum extent permitted by law, each of Koonenberry and the Other Persons make no representation or warranty, express or implied, as to the currency, accuracy, reliability or completeness of all or any part of all or any part of this document, or any constituent or associated presentation, information or material, or the accuracy, likelihood of achievement or reasonableness of any forecasts, prospects of returns contained in or implied by, the information in this presentation or any part of it. Except as required by applicable law or regulation, neither Koonenberry nor the Other Persons have any obligation to provide any additional or updated information, whether as a result of new information, future events or results or otherwise.

## Forward looking statements

These materials include forward looking statements. Often, but not always, forward looking statements can be identified by the use of forward looking words such as "may", "will", "expect" "intend", "plan", "estimate", "anticipate", "continue", "outlook" and "guidance" or other similar words and may include, without limitation, statements regarding plans, strategies and objectives of management, anticipated production or construction commencement dates and expected costs or production outputs.

Forward looking statements are based on Koonenberry and its Management's good faith assumptions relating to the financial, market, regulatory and other relevant environments that will exist and affect Koonenberry's business and operations in future. Koonenberry does not give any assurance that the assumptions on which forward looking statements are based will prove to be correct, or that Koonenberry's business or operations will not be affected in any material manner by these or other factors not foreseen or foreseeable by Koonenberry or Management or beyond Koonenberry's control. Although Koonenberry attempts and has attempted to identify factors that would cause actual actions, events or results to differ materially from those disclosed in forward looking statements, there may be other factors that could cause actual results, performance, achievements or events not to be as anticipated, estimated or intended, and many events are beyond the reasonable control of Koonenberry. Accordingly, readers are cautioned not to place undue reliance on forward looking statements. Forward looking statements in these materials speak only at the date of issue. Subject to any continuing obligations under applicable law in providing this information Koonenberry does not undertake any obligation to publicly update or revise any of the forward looking statements or to advise of any changes in events, conditions or circumstances on which any such statement is based.

## Cautionary statement on visual estimates of mineralisation

Any references in this announcement to visual results are from visual estimates by qualified geologists. Laboratory assays are required for representative estimates of quantifiable elemental values. Visual estimates of mineral abundance should never be considered a proxy or substitute for laboratory analyses where concentrations or grades are the factor of principal economic interest. Visual estimates also potentially provide no information regarding impurities or deleterious physical properties relevant to valuations.

## Proximate resources and statements

This announcement may contain references to other parties either nearby or proximate to Koonenberry Gold's projects and/or references that may have topographical or geological similarities to Koonenberry Gold's projects. It is important to note that such exploration results, discoveries or geological similarities do not in any way guarantee that the Company will have any exploration success at all, or in delineating a Mineral Resource on any of Koonenberry Gold's Projects.

## Competent Persons Statement

The information in this presentation that relates to previous Exploration Results was reported in accordance with the JORC Code and ASX Listing Rules in the Company's ASX announcements set out in the slide labelled "References".

The Company confirms that it is not aware of any new information or data that materially affects the information included in the relevant market announcements and, in the case of estimate of Mineral Resources, that all material assumptions and technical parameters underpinning the estimate in the relevant market announcement continue to apply and have not materially changed. The Company confirms that the information and context in which the Competent Person's findings are presented have not been materially modified from the original market announcements.

No new exploration results are reported in this presentation.

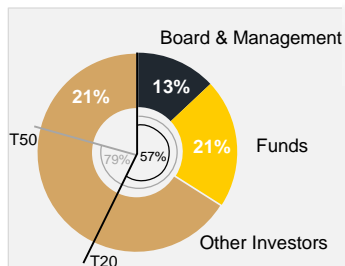
This announcement has been approved for release by the Board of Koonenberry Gold Ltd.

# Corporate Overview

Tightly held » Leveraged to exploration success

Capital Structure	ASX: KNB
Shares on issue*	874.3M
Share price (31/01/2025)	0.025
<b>Market capitalisation</b>	<b>\$21.9M</b>
<b>Cash**</b>	<b>\$4.4M</b>
Debt	-
<b>Enterprise value</b>	<b>\$17.5M</b>

Top 20 hold ~57% and Top 50 hold ~79% of the shares on issue.



Board and Management	Experienced Team – Focused on Discovery
 <b>Paul Harris</b> (BCom, M.MinEng, GAICD) Chairman and Non-Executive Director	<ul style="list-style-type: none"> <li>Experienced professional with +25 years in finance and investment banking including Citibank (Head of Metals and Mining), Bankers Trust and Merrill Lynch</li> <li>Currently Non-Exec Chair of Highfield Resources and Exec Chair of Aeon Metals</li> </ul>
 <b>Dan Power</b> (BSc Hons, MSc (Econ. Geol), MAICD, AIG, SEG) Managing Director	<ul style="list-style-type: none"> <li>Geologist with 28 years' experience in exploration, project generation, evaluation and management in Australia, China, SE Asia, SW Pacific and Mongolia</li> <li>Former Newmont Country Manager and CEO of Titeline Mongolia</li> </ul>
 <b>Anthony McIntosh</b> (BCom, GAICD) Non-Executive Director	<ul style="list-style-type: none"> <li>Extensive experience in investment marketing, investor relations and strategy</li> <li>Non-Executive Director of ASX-listed: Strategic Energy Resources as well as several unlisted and not-for-profit organisations</li> </ul>
 <b>George Rogers</b> (BIB) Non-Executive Director	<ul style="list-style-type: none"> <li>Extensive experience in capital and commodity markets, investor relations and strategic planning as well as corporate strategy, advisory and M&amp;A</li> <li>Formerly Managing Director of KNB. Co-founder and Director of White Hutt</li> </ul>
 <b>Darren Glover</b> (BSc Hons, AusIMM) Non-Executive Director	<ul style="list-style-type: none"> <li>Geologist with 27 years' experience in minerals exploration, mining, resource definition and business development across Australia and Sth America</li> <li>Co-Founder of Gilmore Metals. Previous senior roles with Gold Fields, Newcrest, RGC. Led geological team to discovery of Dargues Reef Gold Mine (NSW)</li> </ul>
 <b>Paul Wittwer</b> (BSc Hons, AIG, AusIMM, SEG) Exploration Manager	<ul style="list-style-type: none"> <li>Geologist with +20years' Australian and international experience in orogenic and epithermal gold systems as well as in silver and copper</li> <li>Formerly Thor Mining and Southern Gold Exploration Manager covering greenfields, near mine exploration, mine geology, resource modelling and development</li> </ul>
 <b>Bryn Ellingworth</b> (BSc Hons, MSc (Econ. Geol), AusIMM, SEG) Principal Geologist	<ul style="list-style-type: none"> <li>Geologist with 10years' experience in mineral exploration and resource definition across various commodities and deposit styles including precious and base metals</li> <li>Strong background in NSW mineral systems with demonstrated success in the Lachlan Fold Belt and New England Fold Belt, NSW</li> </ul>
 <b>Ben Harper</b> (BSc Hons (Econ. Geol)) Consultant Geologist	<ul style="list-style-type: none"> <li>Geologist with 20+ years' experience as a field focussed exploration geoscientist. Track record of discoveries including definition of the Cadia deposits and Gosowong</li> <li>Co-Founder of Gilmore Metals. Previous senior technical roles with Newcrest Mining and Gold Fields</li> </ul>

\*Other securities on issue comprise 94 million options (KNBO) on issue (exercisable @ 4 cents by April 2026) and 10.6 million performance rights, exercisable on various milestones.

\*\*Cash at 31/12/2024.

# Koonenberry Gold

## Investment Summary » Discovering Gold and Copper in NSW

### ENMORE PROJECT » Advanced Gold Project (100% owned)

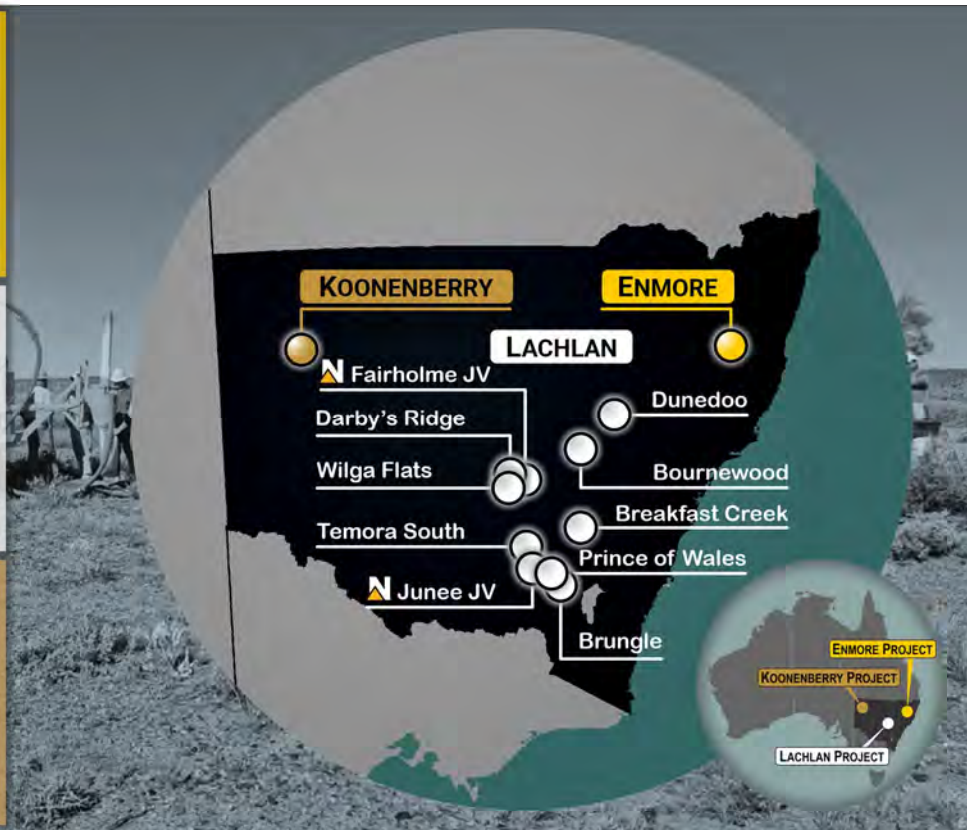
- 20km Sth of +1.7Moz gold-antimony Hillgrove Mine <sup>(1)</sup>
- Broad + high grade gold intercepts:
- 174m @ 1.83g/t Au from 0m (OSSRC006) <sup>(2)</sup>
- 0.45m @ 234g/t Au (u/g channel sample) <sup>(2)</sup>
- Drilling set to commence mid-February

### LACHLAN PROJECT » 10 Project Areas (1,580km<sup>2</sup> EL's)

- Australia's premier Cu-Au belt (19Mt Cu, 110Moz Au) <sup>(3)</sup>
- Good mix of epithermal, porphyry & high-grade skarn targets
- Two Active JVs with **Newmont** (Junee 20%, Fairholme 51%)
- Multiple Au & Cu-Au discovery opportunities
- Drilling underway at Junee JV Project

### KOONENBERRY PROJECT » Underexplored Frontier Belt (2,478km<sup>2</sup>)

- Highly prospective geological setting
- Extension of Western Victorian goldfields (Stawell Zone)
- Abundant evidence for gold mineralisation
- Pipeline of discovery opportunities
- Multi million ounce gold + copper potential





# Enmore Project

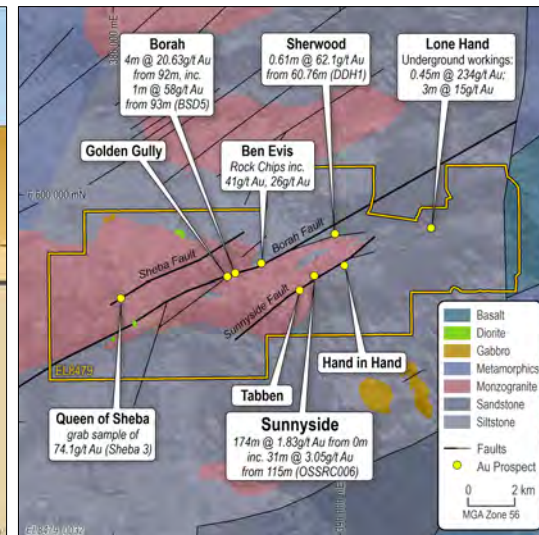
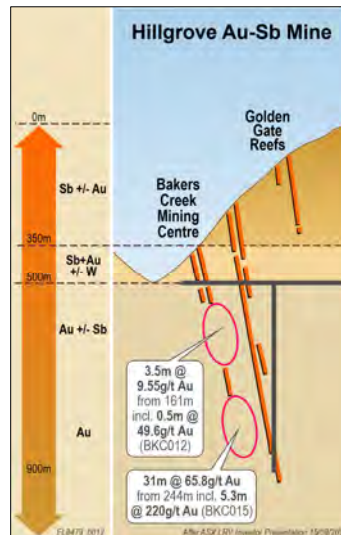
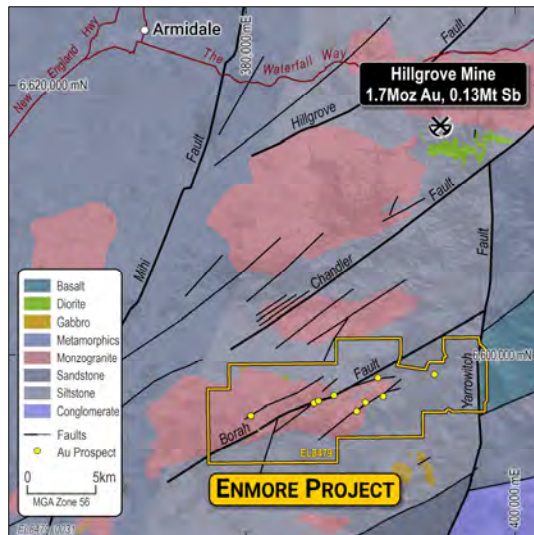
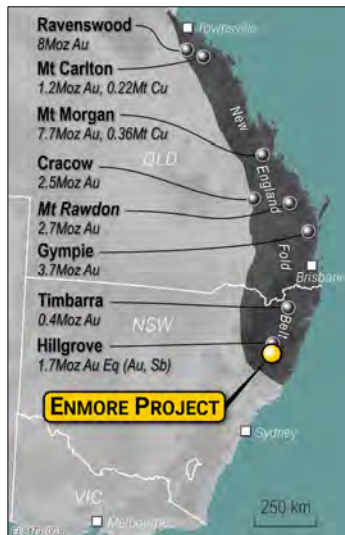
New England Fold Belt » +35Moz Au endowment (1)

## Underexplored Belt » Multiple Tier 1 deposits (1)

- Ravenswood (8Moz), Mt Morgan (7.7Moz), Cracow (2.5Moz), Gympie (3.7Moz), Mt Rawdon (2.7Moz), Mt Carlton (1.2Moz)
- **Hillgrove Mine (1.7Moz Au, 0.13Mt Sb) ASX: LRV (2)**
  - Structurally controlled, spatially related to intrusions
  - Sb-Au → Au vertical zonation (e.g. Sunday Creek, Fosterville)
- Newmont (1,582km<sup>2</sup>) and FMG (567 km<sup>2</sup>) both active in region
- **Highly prospective & underexplored » Au-Sb potential**

## Enmore Gold Project » Opportunity to rapidly advance with drilling

- 134km<sup>2</sup> EL; 20km south of Hillgrove Au-Sb Mine;
- Widespread high-grade gold occurrences & historic workings
- **Geological similarities & fault architecture to Hillgrove:**
  - Structurally controlled, spatially related to intrusions
  - **+30km strike potential** on 3 shear zones
  - **Bulk tonnage and high-grade gold potential**
- **Limited systematic exploration » Most targets not drill tested**



# Enmore Project – Sunnyside Prospect

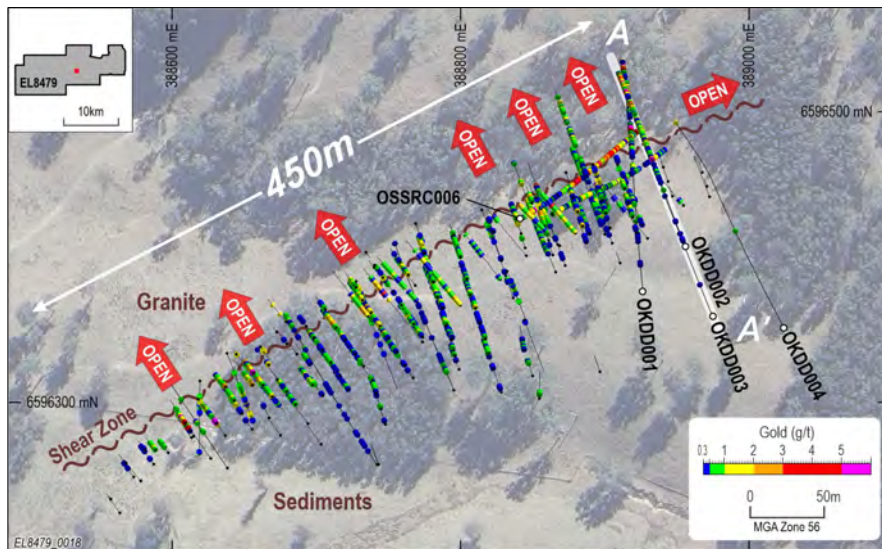
Impressive widths and grades » Opportunity to rapidly advance with drilling

## Sunnyside Prospect » Broad gold intercepts along NW shear zone

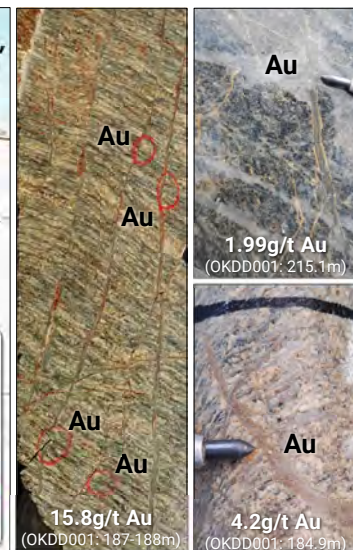
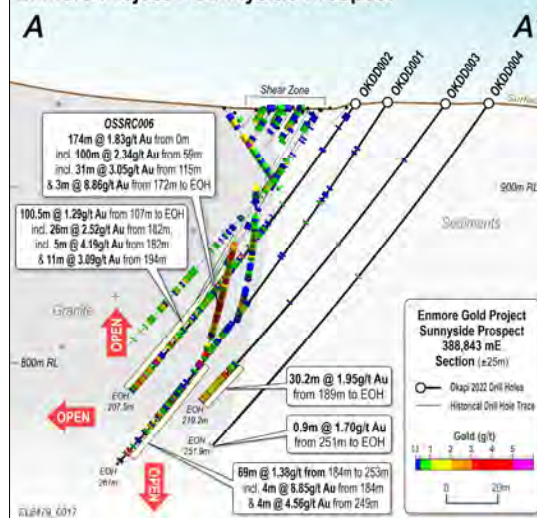
- +450m long shear zone (open) with quartz veins & breccias
- Recent holes ending in mineralisation: <sup>(1)</sup>
  - 174m @ 1.83g/t Au from 0m; inc. 31m @ 3.05g/t Au from 115m & 3m @ 8.86 from 172m to EOH (OSSRC006)
  - 69m @ 1.38g/t Au from 184m (OKDD001)
  - 100.5m @ 1.29g/t Au from 107m to EOH (OKDD002)
  - 30.2m @ 1.95g/t Au from 189m to EOH (OKDD003)

## Sunnyside Prospect » High-grade gold along cross-cutting veins

- High-grade intercepts include: <sup>(1)</sup>
  - 4m @ 11.94g/t Au from 0m (SP3B)
  - 2m @ 14.6g/t Au from 46m (SP13E)
  - 4m @ 8.85g/t Au from 184m (OKDD001)
  - 1m @ 15.15g/t Au from 172m (OSSRC006)
- Majority of drilling sub-parallel to high-grade veins
- Drilling to commence mid February (~2,000m)



## Enmore Project – Sunnyside Prospect





# Enmore Project

## District Potential » Multiple walk-up drill targets

### Borah Prospect » High-grade gold target <sup>(1)</sup>

- 2.5km long Au soil anomaly (max 11,000ppb Au)
- Historic high-grade gold intersections:
  - 4m @ **20.63g/t Au** from 92m, inc. 1m @ **58g/t Au** from 93m (BSD5)
  - 6m @ 4.61g/t Au from 65m (BSD1)
  - 4m @ 7.06g/t Au (BA\_L2 – U/G face sample)

### Sherwood Prospect » Historic workings <sup>(1)</sup>

- +1km long Au soil anomaly (open to east)
- Limited drilling:
  - 0.61m @ **62.1g/t Au** from 60.76m (DDH1)

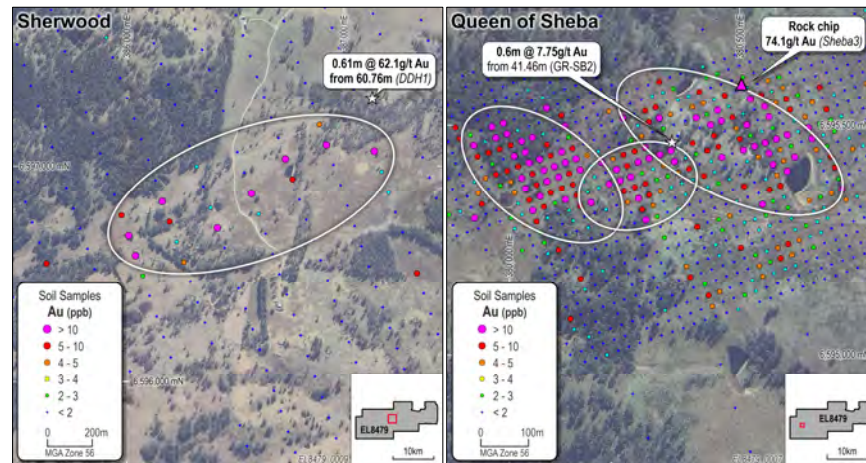
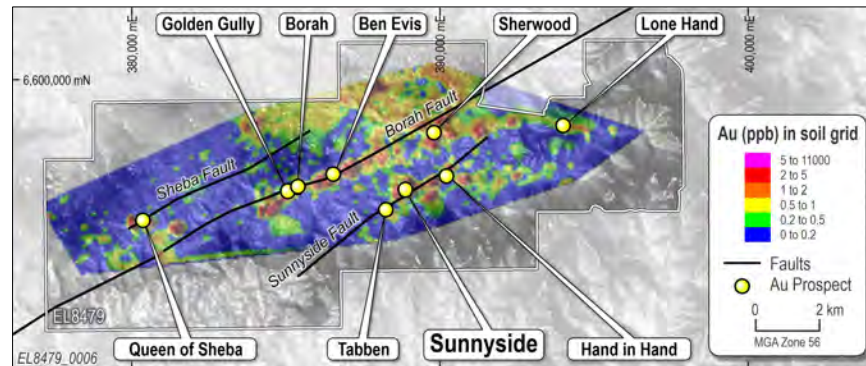
### Queen of Sheba Prospect » High-grade gold target <sup>(1)</sup>

- 900m x 300m Au soil anomaly (max 3,430ppb Au)
- Historic workings: **74.1g/t Au** (Sheba 3, grab sample)
- Limited drilling: 0.6m @ **7.75g/t Au** from 41.46m (GR-SB2)

### Lone Hand Prospect » Bonanza gold target <sup>(1)</sup>

- Surface sampling: **56g/t Au** and **36g/t Au**
- Underground workings:
  - 0.45m @ **234g/t Au**; 0.91m @ **21g/t Au**; 0.76m @ **23 g/t Au**;
  - 0.45m @ **33g/t Au**; 1.52m @ **16g/t Au**; 3m @ **15g/t Au**

➤ **NNW drive orientation of historic workings at Borah and Lone Hand supports high-grade structural model**



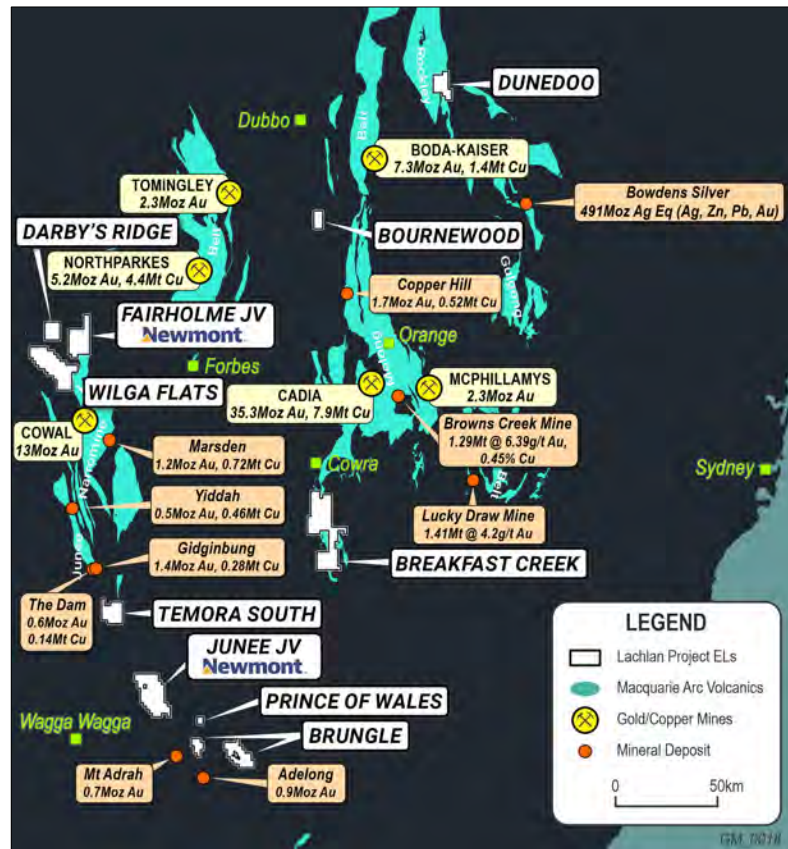
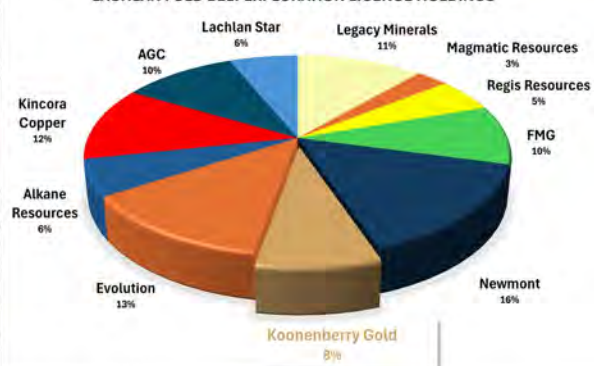
# Lachlan Project

Strategic holding in Junee & Molong Belts » 110Moz Au, 19Mt Cu Endowment (1)

Cowal Gold Mine (Evolution Mining)



LACHLAN FOLD BELT EXPLORATION LICENCE HOLDINGS\*



Notes: 1. Future of Minerals in NSW Report, March 2020. NSW Dept. of P, I&E; \*Selected Exploration Licence Holders, Minview (Appendix 1)



# Lachlan Project

June JV Project » **Newmont**™ (KNB 20% free carried interest)

## June JV Project » Multiple Porphyry Cu/Au & Epithermal Au Targets

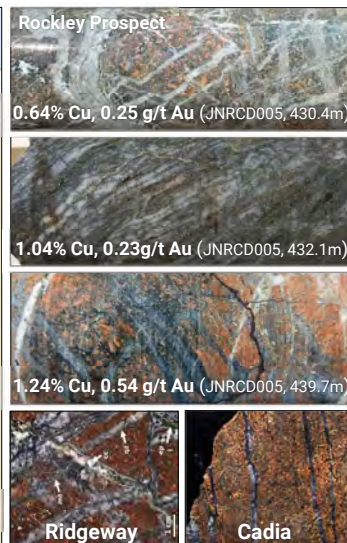
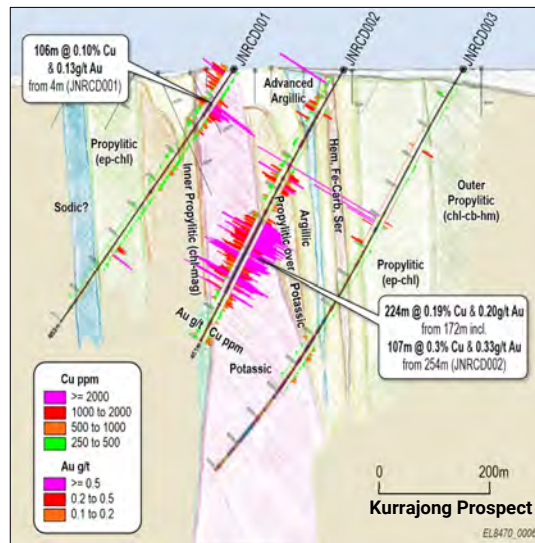
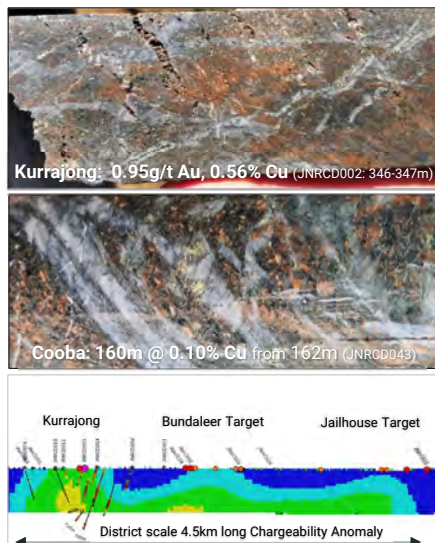
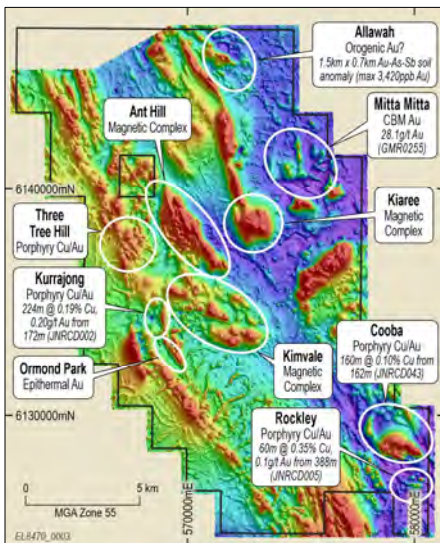
- Extensive datasets and drilling (+66,000m) completed (~\$23.9M)
- Shallow exploration for LFB, with systems exposed at/near surface
- **Multiple Targets; 4x alkaline porphyry systems identified**
- Causative monzodiorite to monzonite porphyry intrusions
- "Unusually fertile segment of Macquarie Arc – Alan Wilson" <sup>(1)</sup>
- **Ridgeway-type porphyry alteration and veining** <sup>(2)</sup>

## Kurrajong Prospect » Cu-Au porphyry system from surface

- 17 drillholes (8,982m) included: <sup>(3)</sup>
  - **224m @ 0.19% Cu, 0.20g/t Au from 172m**, inc. 107m @ 0.3% Cu, 0.33g/t Au from 254m (JNRCD002)

## Rockley Prospect » Cu-Au porphyry system (440Ma intrusive suite)

- 8 drillholes (4,506m) included: <sup>(3)</sup>
  - **60m @ 0.35% Cu, 0.1g/t Au from 388m** (JNRCD005)
- **Newmont funded ~11,000m drilling program underway** <sup>(2)</sup>



# Lachlan Project

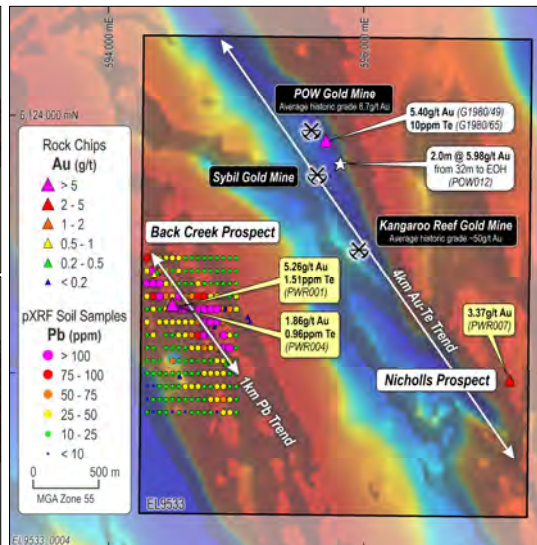
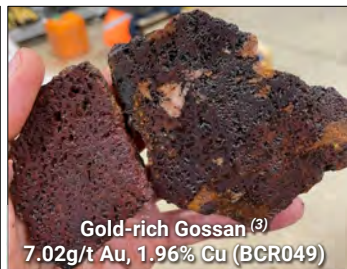
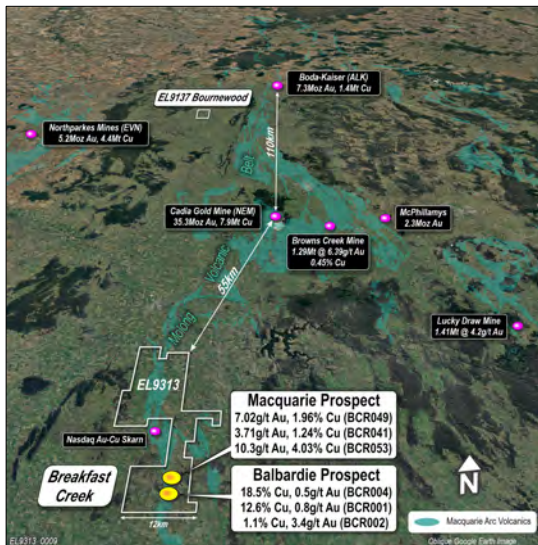
## High-grade gold and copper discovery opportunities

### Breakfast Creek Cu-Au Project » Rare opportunity

- 55km south of Cadia Cu-Au Mine (35.3Moz Au & 7.9Mt Cu) <sup>(1)</sup>
- Entire prospective belt currently held by majors and active juniors
- **Significant +6km Cu-Au + pathfinder soil anomaly**
- Widespread skarn-type hydrothermal alteration & gossans
- Potential for **high-grade Cu-Au skarn** and porphyry systems
  - e.g. Browns Creek 1.29Mt @ 6.39g/t Au, 0.45% Cu <sup>(2)</sup>
- **Infill surface geochemistry » Advance to drill ready status**

### Prince of Wales Au Project » Historic workings, largest in Gundagai

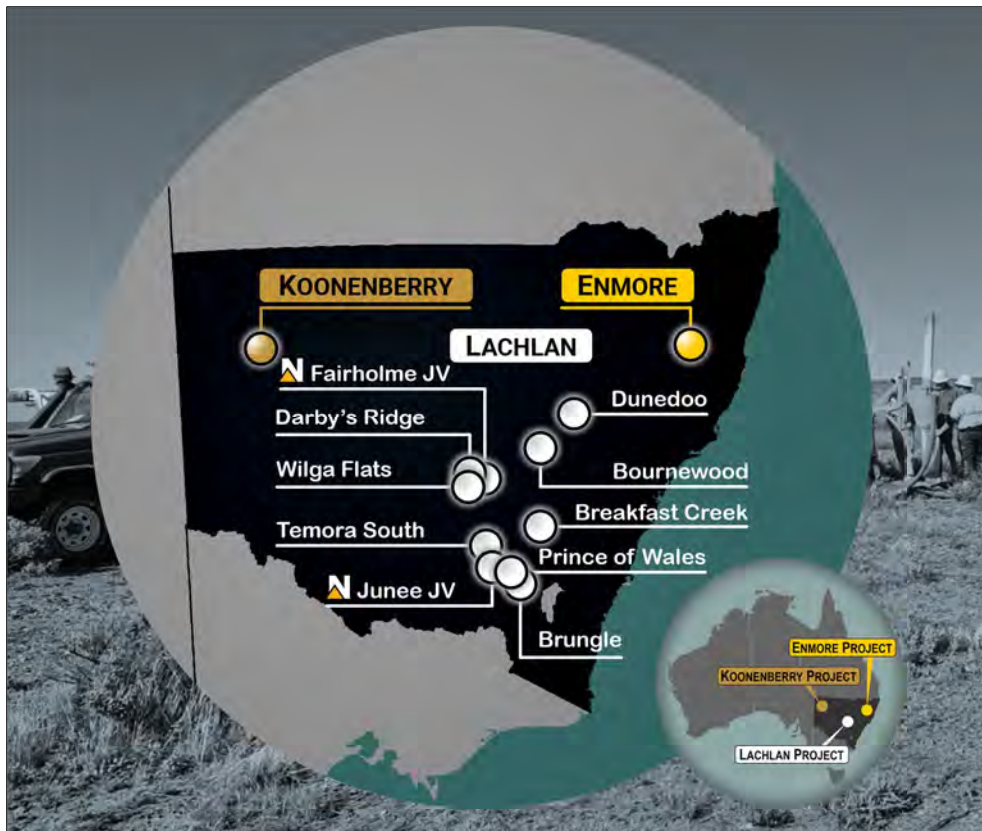
- **1.8km underground workings; 170m deep** (26.6k oz Au @ 8.7g/t Au) <sup>(4)</sup>
- Two gold trends (POW 4km and Back Creek +1km) <sup>(5)</sup>
- **Magnetite destructive alteration** (sericite-clay-qtz-carbonate-pyrite)
- Limited drilling: **2m @ 5.98g/t Au** from 32m to EOH (POW012) <sup>(4)</sup>
- No systematic or modern exploration
- **Surface geochemistry & geophysics » Advance to drill ready status**





# Koonenberry Gold

Multiple Au & Cu discovery opportunities » Consistent news flow for investors



## ENMORE PROJECT » Advanced Gold Project

- Sunnyside: Drilling to commence mid-February (~2,000m)
- Borah: Geochem to refine drill targets
- Sherwood: Geochem to refine drill targets
- Queen of Sheba: Geochem to refine drill targets
- Lone Hand: Geochem to refine drill targets
- Potential high-grade and bulk tonnage discoveries

## LACHLAN PROJECT » Progressing multiple drill targets

- June JV: **Newmont** drilling underway (~11,000m)
- Breakfast Creek: Geochem to refine drill targets
- Prince of Wales: Geochem & IP to define drill targets
- Dunedoo: Geochem & IP to refine drill targets
- Fairholme JV: **Newmont** targeting Cu-Au porphyries
- Multiple Au & Cu-Au discovery opportunities

## KOONENBERRY PROJECT » Underexplored Frontier Belt (2,478km<sup>2</sup>)

- Bellagio: Aircore to test 50m wide Central Gold Zone
- Royal Oak Fault: Aircore to test 3 areas on 20km structure
- Pipeline Projects: +34km of undrilled Au soil anomalies
- Delamarian: Field checking of Cu prospective stratigraphy
- Multi-million ounce Au + Cu potential



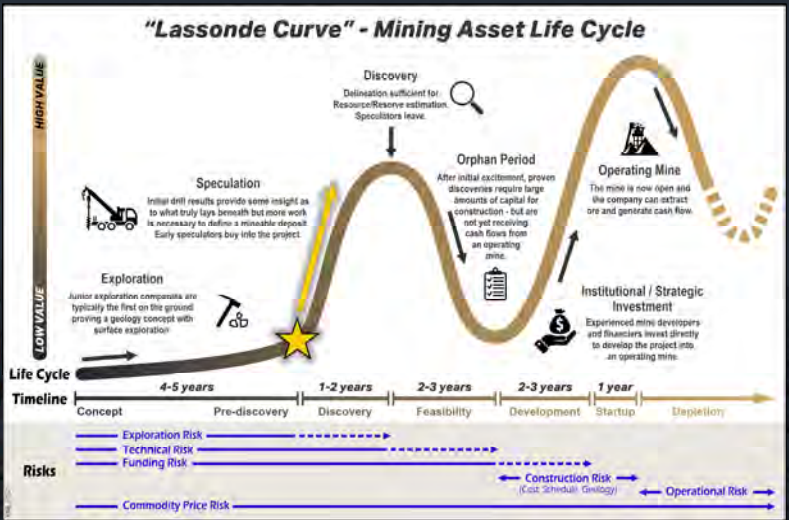


Investment Case » Discovering Gold and Copper in NSW

Multiple drill-ready targets set to advance  
Potential re-rating with exploration success



Geology	» Exciting Au and Cu-Au Portfolio » Frontier, emerging and world-class geological terranes
Scale	» 4,192km <sup>2</sup> substantial land package
Team	» Experienced in Au & Cu-Au exploration » Track record of discoveries (& hungry for more!)
Support	» Lion Selection Group + Lowell Resources Fund
Cash	» Well funded for discovery with \$4.4M cash <sup>(1)</sup>
Value	» Leveraged to exploration success
Timing	» Drilling underway at June JV ( <b>Newmont</b> ) » Discovery hole already drilled at Enmore



174m @1.83g/t Au from 0m & 3m @8.86g/t Au from 172m to EOH



For further information, please contact:

**Dan Power**

**Managing Director**

[dan.power@koonenberrygold.com.au](mailto:dan.power@koonenberrygold.com.au)

+61 8 6245 9869

**Johnathon Busing**

**Company Secretary**

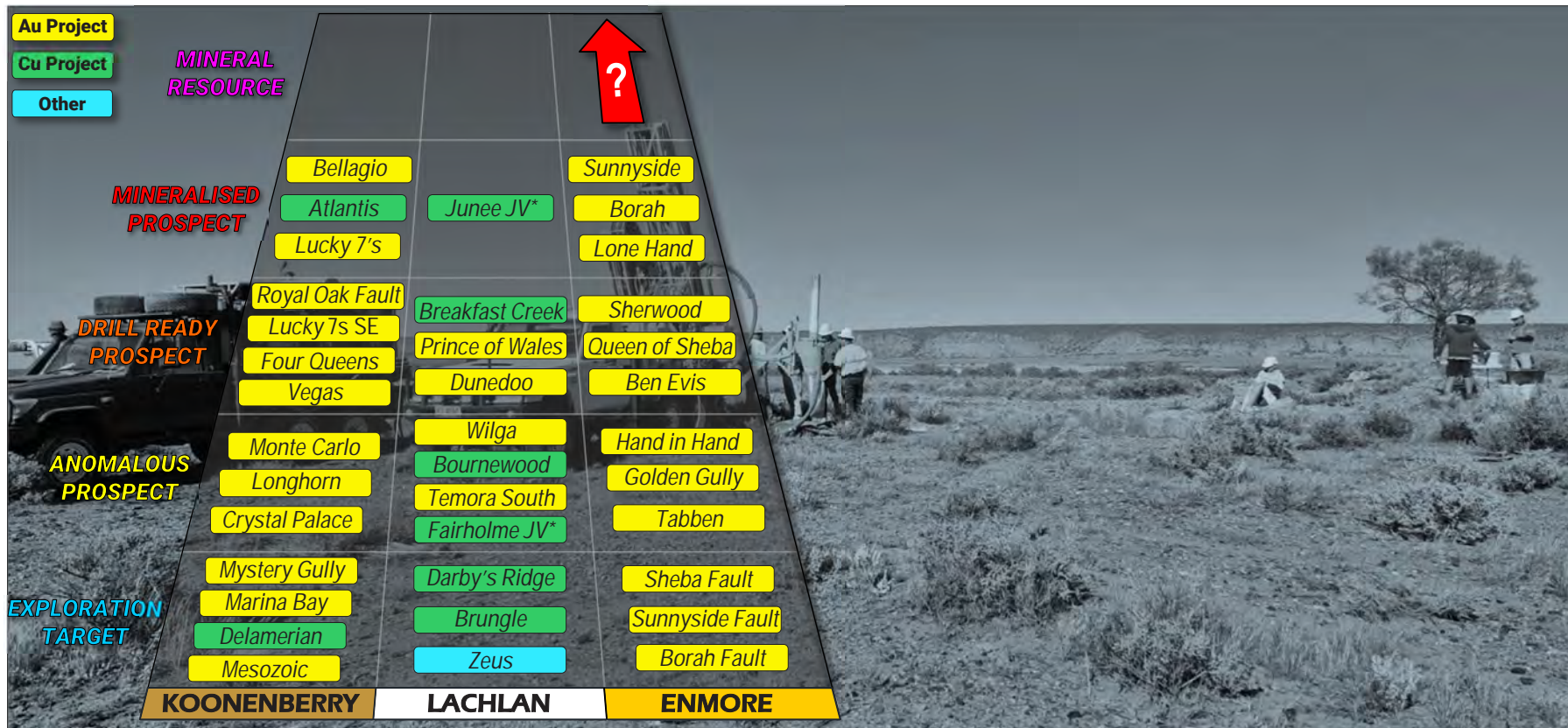
[jb@11corporate.com.au](mailto:jb@11corporate.com.au)

+61 8 6165 8858



# Koonenberry Gold

## Project pipeline

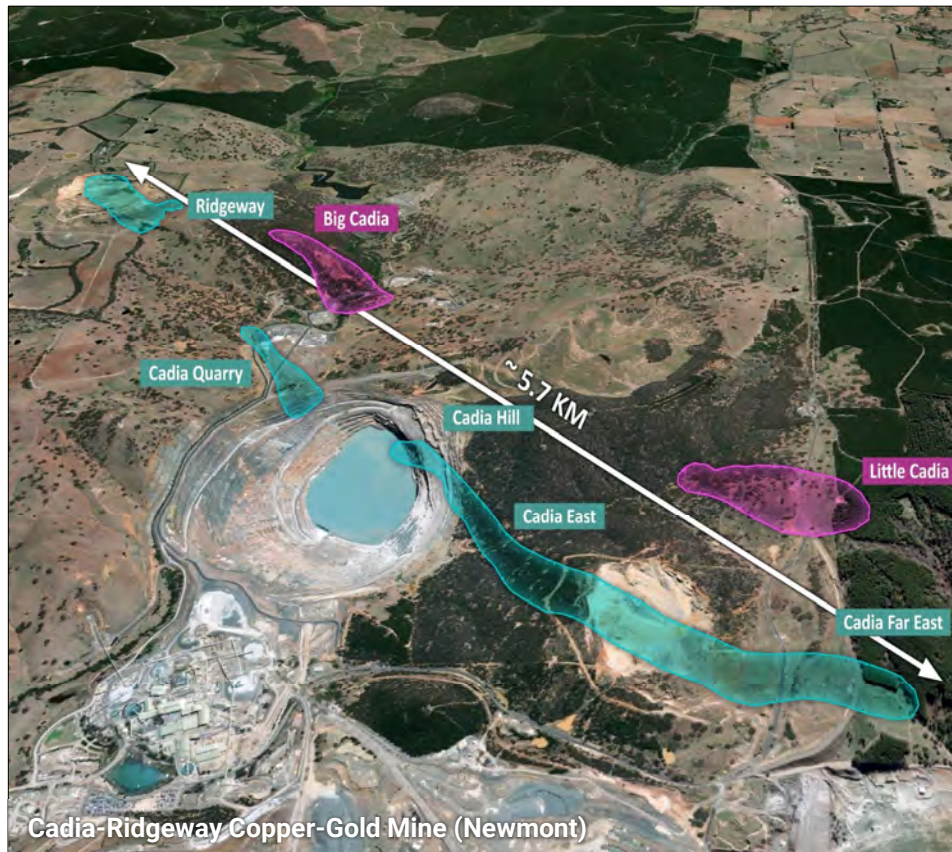


Notes: \* June and Fairholme Projects are in Joint Venture with Newmont (Manager)



# Appendix 1

## Additional project information – Lachlan Project



## Lachlan Projects » Multiple Gold and Copper discovery opportunities

### Darby's Ridge Au-Cu Project

- Underexplored magnetic igneous complex
- **Coincident geophysical anomalies (Mag-IP)**
- Large +2km Au-Cu Aircore anomaly

➡ 7Moz Au Havieron deposit analogy

### Wilga Au Project

- 20km NNW of 13Moz Cowal Au Mine
- **Mineralisation Sth of EL Boundary:**  
2.22m @ 7.64g/t Au inc. 0.3m @ 19.4g/t Au from 34.2m
- Epithermal qtz-carbonate-adularia alteration

➡ Advance to drill ready status

### Temora South Au Project

- 16km Sth of 1.4Moz Gidginbung Au-Cu Mine
- **12.7g/t Au, 4.98g/t Au, 1.65g/t Au rocks**
- Roadside RAB hole 4m @ 1.93g/t Au to EOH

➡ Advance to drill ready status

### Brungle Cu-Au Project

- Significant scale BHP stream sediment Cu
- **8.43g/t Au and 1.37% Cu rock chips**
- Large ovoid shaped magnetic anomalies

➡ Low level exploration planned



### Breakfast Creek Cu-Au Project

- 55km Sth of 35Moz Cadia Cu-Au Mine
- **+6km Cu-Au + pathfinder soil anomaly**
- **18.5% Cu, 0.5g/t Au; 7.02g/t Au, 1.96% Cu**

➡ Advance to drill ready status

### Prince of Wales Au Project

- 1.8km historic workings; 170m deep @ 8.7g/t Au
- **Shallow RAB only: 2m @ 5.98g/t Au to EOH**
- 4km long POW-Sybil structural trend
- +1km long Back Creek trend (open)

➡ Advance to drill ready status

### Dunedoo Au Project

- 65km Nth of 491Moz Ag Eq Bowdens deposit
- **8km long Au in soil anomaly (>10ppb Au)**
- 1.24g/t Au, 12g/t Ag rocks

➡ Advance to drill ready status

### June JV Cu-Au Project (KNB 20%, NEM \$23.9M)

- Unusually fertile segment of Macquarie Arc
- **25x Targets; 4x alkalic porphyry systems**
- 224m @ 0.19% Cu, 0.2g/t Au from 172m

➡ Drilling commenced in Jan '25 **Newmont**

### Fairholme Cu-Au Project (KNB 51%, NEM earn-in)

- Underexplored igneous complex in Lachlan
- Concealed below shallow cover (36-150m)
- **Numerous Northparkes-style mag features**

➡ Drilling planned

**Newmont**

### Bournewood Cu-Au Project

- 40km SW of 7.3Moz Boda Cu-Au deposit
- Numerous historic workings
- **13.3g/t and 5.7% Cu rocks**

➡ Low level exploration planned



# Lachlan Project

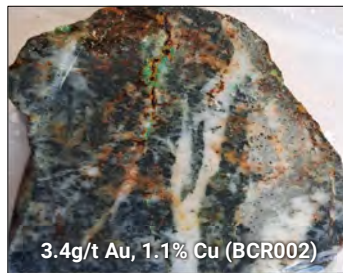
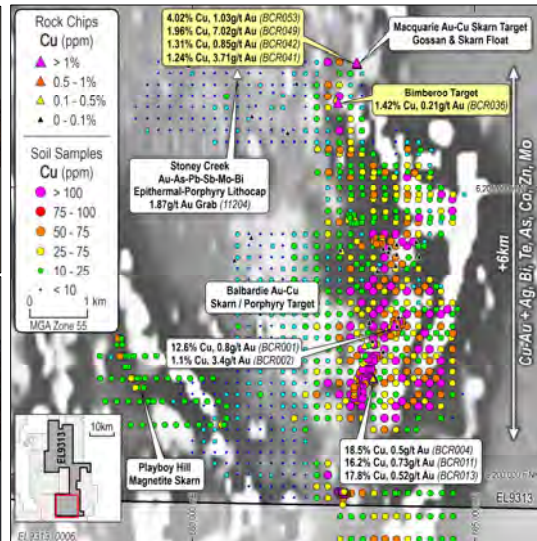
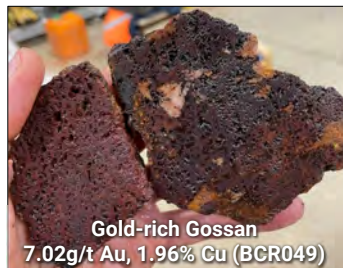
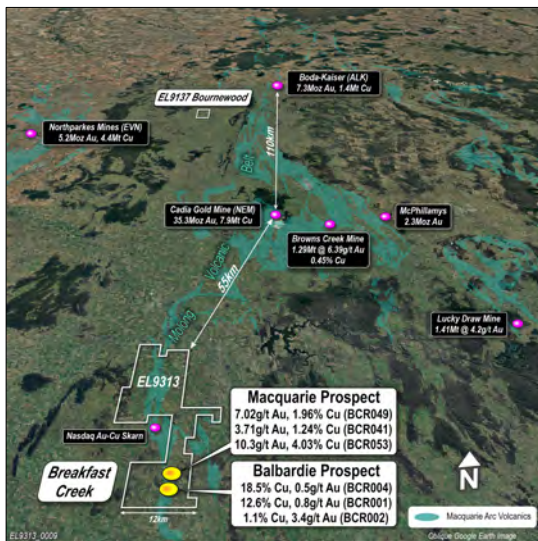
## Breakfast Creek Project » Porphyry Cu-Au and high-grade Cu-Au Skarn Target

### Breakfast Creek Cu-Au Project » Underexplored 392km<sup>2</sup> EL

- 55km south of Cadia Cu-Au Mine (35.1Moz Au & 7.9Mt Cu) <sup>(1)</sup>
- Hosted in sub-cropping Molong Volcanic Belt, Macquarie Arc
- Potential for **high-grade Cu-Au skarn** and porphyry systems  
- e.g. Browns Creek 1.29Mt @ 6.39g/t Au, 0.45% Cu <sup>(2)</sup>
- Entire prospective belt currently held by majors and active juniors
- **Unexplored in Australia's premier Au-Cu belt » Rare opportunity**

### Balbardie Cu-Au Prospect » Exciting high-grade skarn/porphyry

- **Significant +6km Cu-Au + pathfinder soil anomaly**
- Widespread skarn-type hydrothermal alteration & gossans
- **High-grade Cu-Au** grab samples: **3.4g/t Au**, 1.1% Cu (BCR002); 0.8g/t Au, **12.6% Cu** (BCR001); 0.5g/t Au, **18.5% Cu** (BRC004); 0.73g/t Au, **16.2% Cu** (BCR011); 0.52g/t Au, **17.8% Cu** (BCR013) <sup>(3, 4)</sup>
- **Very limited drilling » Targets remain untested**



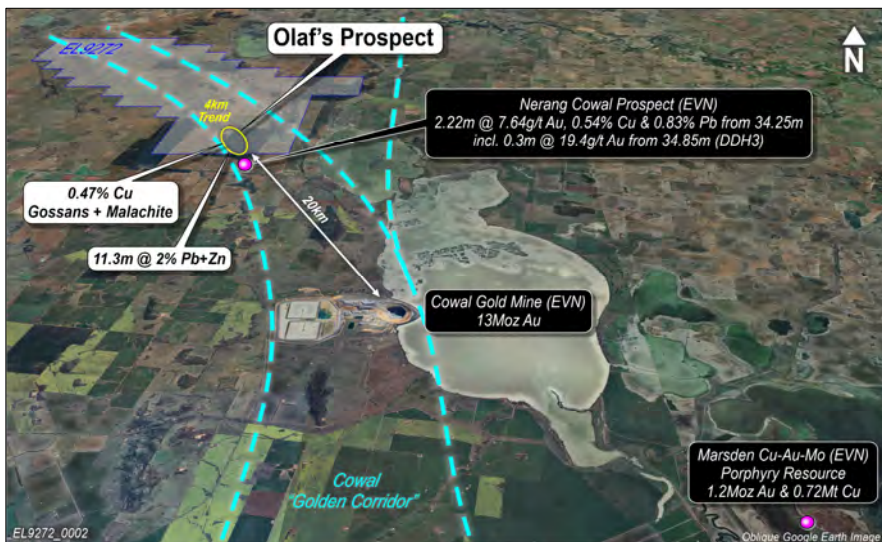


# Lachlan Project

## Wilga Project » Standout Epithermal Au Target

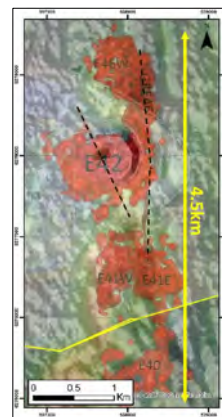
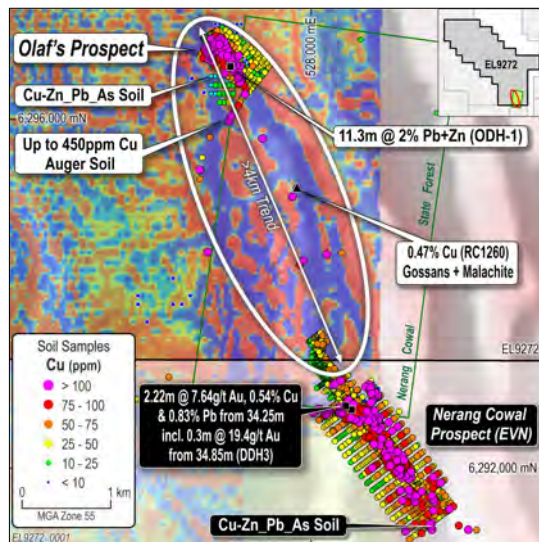
### Wilga Project » 20km from +13Moz Cowal Au Mine <sup>(1)</sup>

- **Strategically located** 272km<sup>2</sup> Exploration Licence
- Coincident Magnetics and K-Radiometric signatures
- **Prospective features similar to Cowal Igneous Complex**
- +4km Carbonate Base Metal (CBM) trend
- No systematic exploration
- **Land access secured to previously unexplored Olaf's Prospect**



### Olaf's Prospect » Mineralisation at EL boundary

- Significant drill results to south: **2.22m @ 7.64g/t Au** from 34.25m incl. **0.3m @ 19.4g/t Au** from 34.85m (DDH3) <sup>(2)</sup>
- Cu-Zn-Pb-As soil anomaly (open); nb. Cu-Pb pathfinders at Cowal
- **Highly anomalous rocks: 0.47% Cu, 0.33% Zn** <sup>(1260)</sup> <sup>(2)</sup>; 1.32% Pb (788-4) <sup>(3)</sup>
- Limited drilling confirms base metals: 11.33m @ 2% Pb+Zn (ODH-1) <sup>(2)</sup>
- **Epithermal quartz-carbonate-adularia alteration**
- Pyrite>sphalerite>galena>chalcopryite veins



+13Moz Cowal Au Mine <sup>(4)</sup>  
at same scale as Olaf's

# Lachlan Project

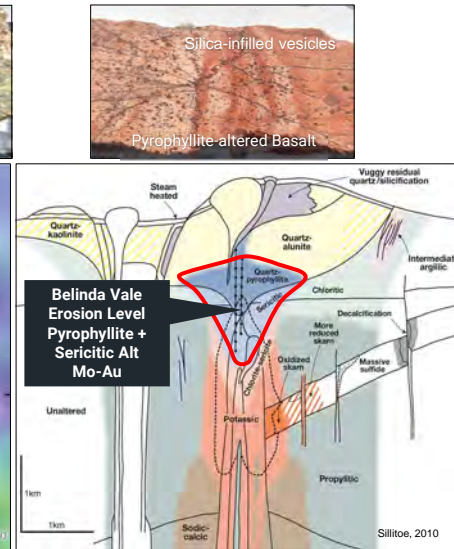
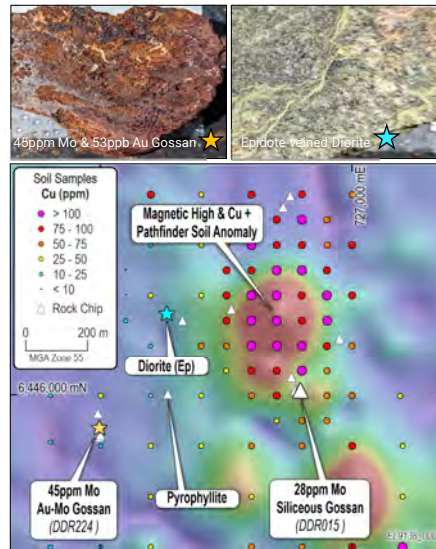
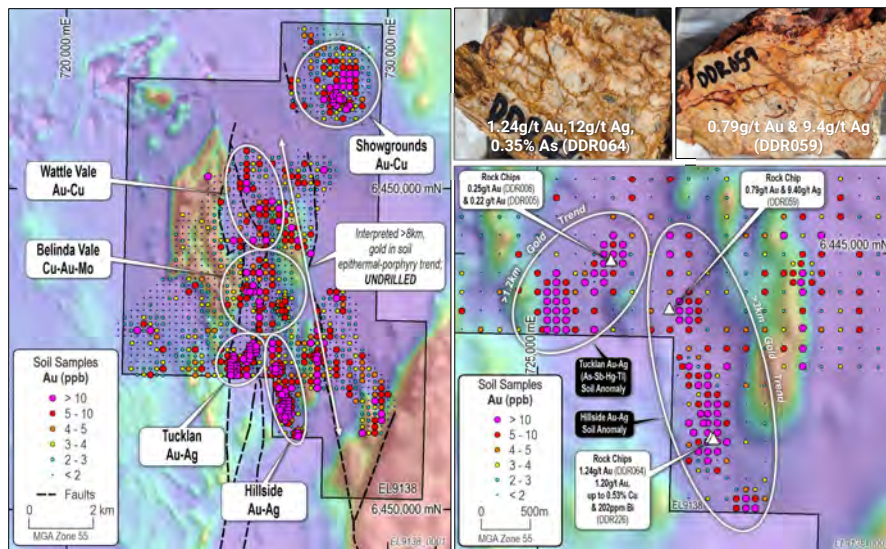
## Dunedoo Project » Not a single drillhole on +8km Au trend

### Dunedoo Project » Multiple untested Au-Ag-Cu Targets

- 65km from 491Moz Ag Eq Bowden's Silver Mine <sup>(1)</sup>
- Interpreted prospective Macquarie Arc geology
- Extensive alluvial gold (Tucklan alluvials); source not identified
- +8km gold soil anomaly** (>10ppb Au; max 182.5ppb Au) <sup>(2)</sup>
- Magnetite destructive acid alteration along structural trend**
- 5 targets (Tucklan, Hillside, Wattle Vale, Showgrounds & Belinda Vale)
- **Prospects remain untested by drilling**

### Belinda Vale Prospect » Porphyry Cu-Au Target

- 450 x 300m high amplitude "bullseye" magnetic anomaly**
- Coincident Cu-Mo + pathfinder element soil anomaly
- Previously misidentified high level alteration minerals
- Propylitic altered (ep-chl-cb-alb-ser) andesitic volcanoclastics + hornblende-phyrlic diorite (fertile). Pyrophyllite altered basalt to west
- **Features consistent with upper parts of Cu-Au-Mo porphyry system**





# Lachlan Project

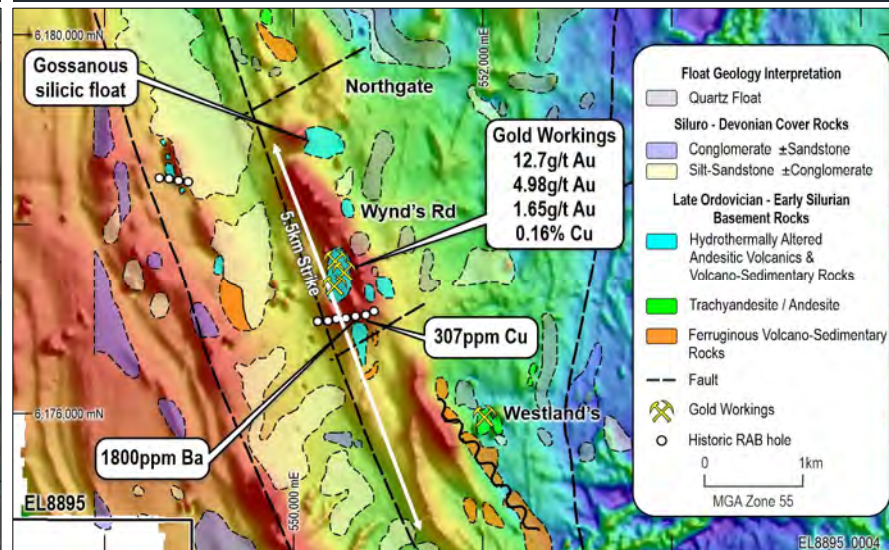
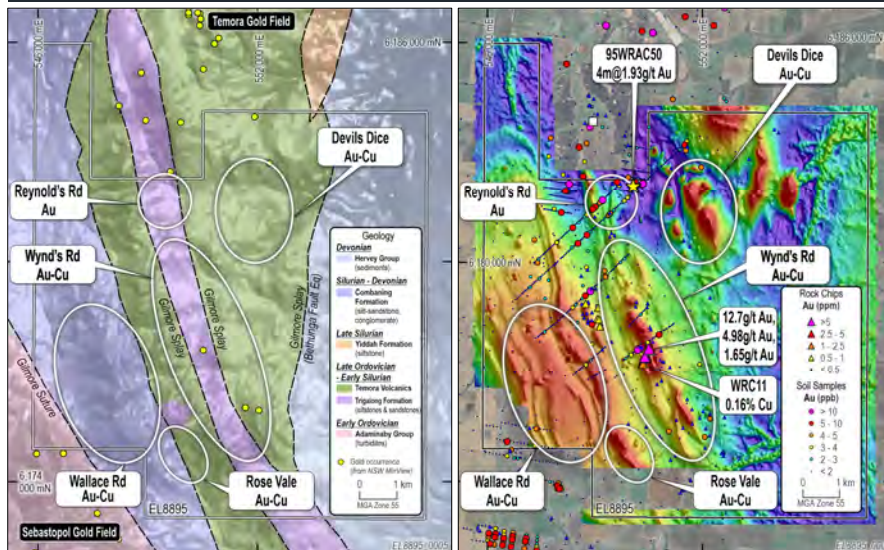
## Temora South Project » Highly prospective & underexplored

### Temora South Project » Epithermal Au & Porphyry Cu-Au Target

- 16 km from 1.4Moz Gidginbung HS Epithermal Au Mine <sup>(1)</sup>
- Prospective Late Ordovician to Early Silurian Volcanics (host to Gidginbung Mine and Temora Porphyry Cu-Au deposit)
- Bounded by Gilmore Suture and second-order splay faults
- “Roadside” RAB hole: 4m @ 1.93g/t Au to EOH (95WRAC50)
- Five targets identified

### Wynds Rd Au Target » Underexplored outcropping gold system

- Historic workings: +400m strike
- Rock chips: 12.7g/t Au, 4.98g/t Au, 1.65g/t Au & 0.16% Cu <sup>(2)</sup>
- +2.5km strike of phyllic - argillic - advanced argillic alteration
- Alteration assemblage consistent with root zone of lithocap
- Qtz-carb-cpy-py veins
- Untested linear magnetic highs (4 discrete “thumbprint” anomalies)
- No previous systematic drill testing/No RC or DD testing





# Lachlan Project

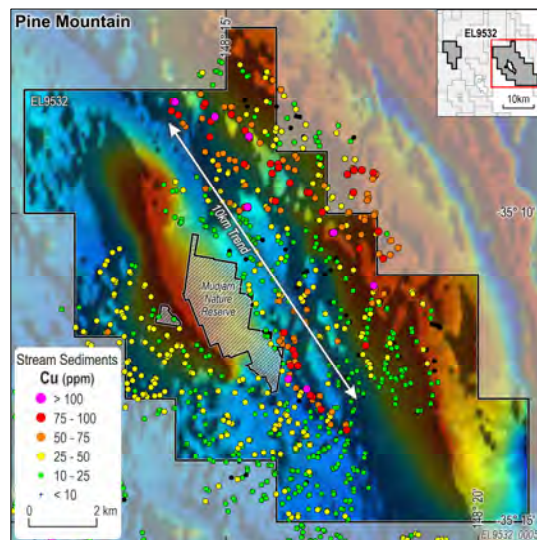
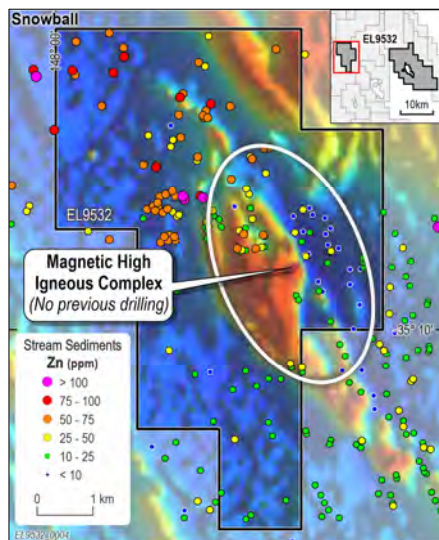
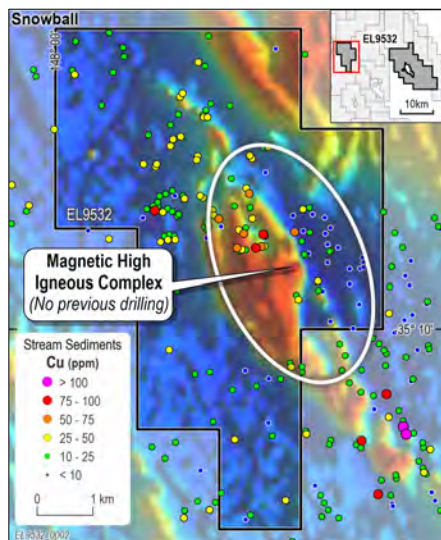
## Brungle Project » Early-stage Cu-Au Porphyry discovery opportunity

### Brungle/ Snowball Target » Porphyry Cu-Au

- Interpreted sub-cropping Macquarie Arc igneous complex
- **4.5 km x 2.0km ovoid shaped magnetic anomaly similar to Cadia**
- 1983 BHP Cu-Zn-Pb SSD anomaly shows classic porphyry zonation with proximal Cu and distal Zn anomalies <sup>(1)</sup>
- Porphyry alteration vectors inc. skarn, inner propylitic and potassic
- **No previous drill testing**

### Brungle/ Pine Mountain Target » Porphyry/Epithermal Au-Cu

- **Historic Grab samples inc. 8.43g/t Au (5049/18) & 1.37% Cu <sup>(2)</sup>**
- Significant scale & tenor BHP Cu-Pb-Zn-As SSD anomalies <sup>(1)</sup>
- Granite porphyry observed with typical lithocap observations inc. stockwork barite veining, disseminated galena-fluorite, pyritic boxworks & qtz-tml veining
- **No previous drill testing**



# Lachlan Project

## Darby's Ridge » Big targets under moderate cover

### 100% owned Project

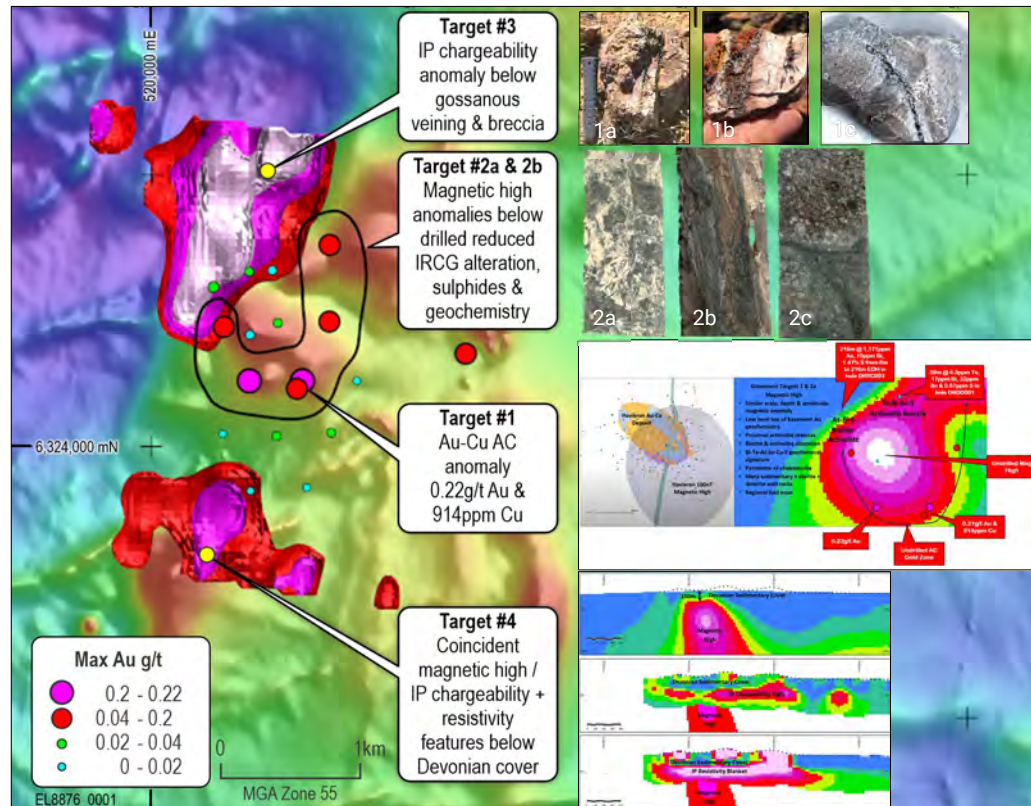
- Prospective Ordovician? - Silurian + Devonian metasediments and volcano-sedimentary rocks
- **Baseline datasets already acquired** including: 50m aeromagnetics/radiometric surveys, dipole-dipole IP survey, world view satellite imagery
- **Previously funded by Newmont**

### Target type » Reduced Intrusion-related Cu-Au

- Havieron Au-Cu deposit analogy
- **Similar geology, alteration, geochemistry & scale**

### Grassmere Prospect » Exciting Cu-Au Target

- Large magnetic high igneous complex
- Fold nose structural setting
- **Semi coincident IP chargeability, conductivity & resistivity geophysical anomalies**
- **Large >2km Au-Cu Aircore anomaly** (max 0.22g/t Au, 914ppm Cu, +1171ppm As  $\pm$  Zn  $\pm$  Pb)
- Only four RC/DH completed
- **Extensive reduced intrusion-related alteration** (bt-act-po  $\pm$  cpy  $\pm$  sp  $\pm$  ga)  $\rightarrow$  inc. intensity with depth
- **Several >600m diameter "bullseye" magnetic anomalies remain undrilled**



Photos: 1a/b. Outcropping gossanous, quartz veined & altered meta-sediments; 1c. Drill chip from DDR003 (135-136m);

2a. Calc silicate-sulphide cemented hydrothermal breccia (DRDD001, 307.1m); 2b. Calc silicate-sulphide (po-cpy-sp-ga) vein in potassic alt (bt) meta-mudstone

2c. Potassic (bt) altered diorite porphyry & calc silicate-sulphide veinlets (DRDD001, 393.6m)

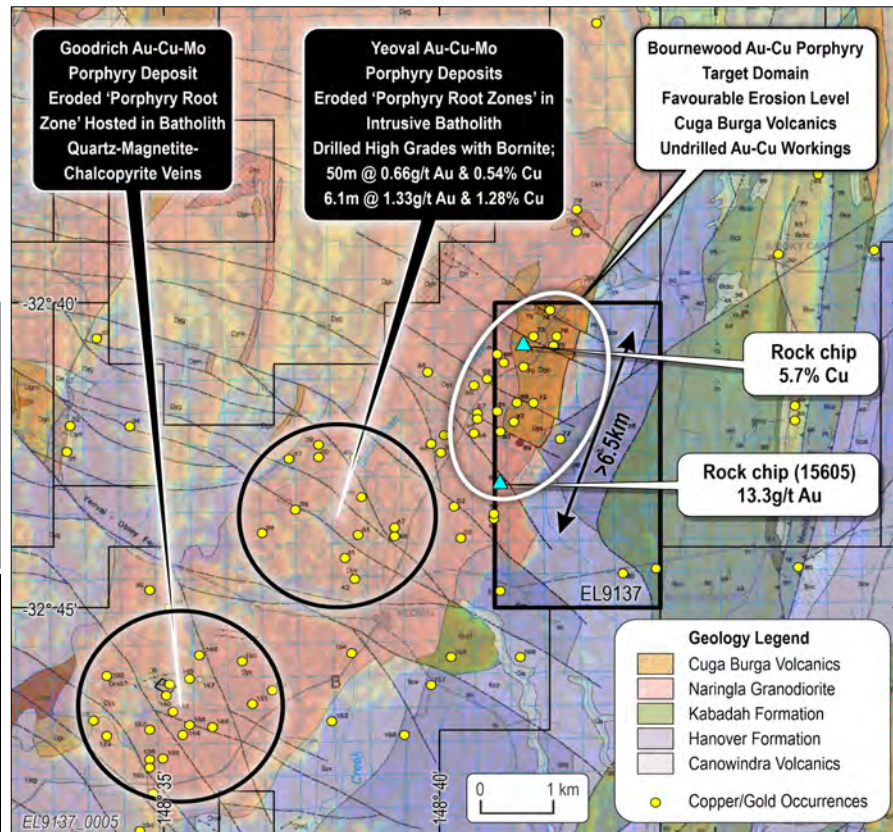
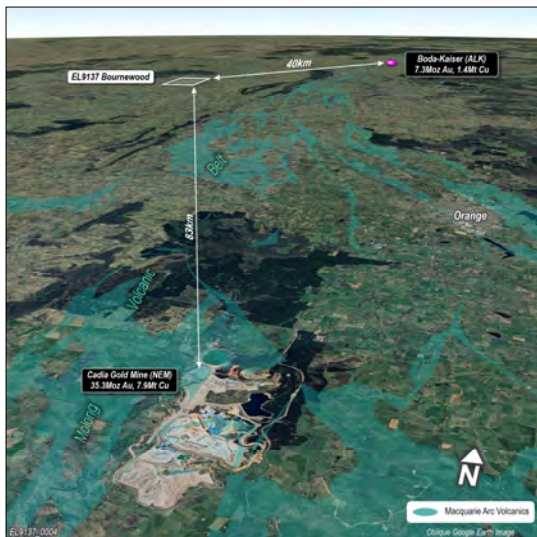


# Lachlan Project

## Molong Belt » Bournewood Cu-Au Porphyry Project

### Bournewood Cu-Au Project » Favourable geology and erosional level

- Rock chips to 13.3g/t Au (15605) <sup>(1)</sup> and 5.7% Cu <sup>(2)</sup>
- Numerous historic Cu-Au workings
- Devonian volcanics next to Devonian intrusions
- Alteration vectors indicative of upper/outer LFB Cu-Au porphyry (phyilic/argillic, inner propylitic (act-ep-mt-sulphide), mt-skarn)
- High grade Au-Cu-Mo-Bi surface geochemistry
- No previous RC/DDH testing of copper soil anomaly



# Lachlan Project

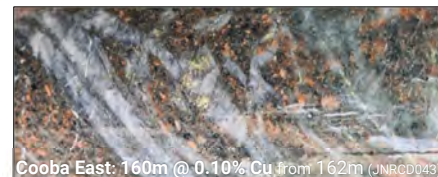
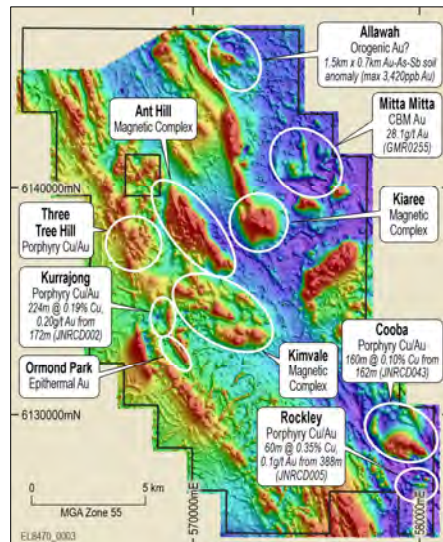
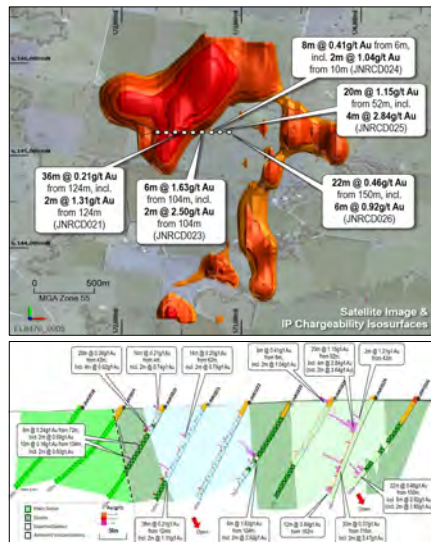
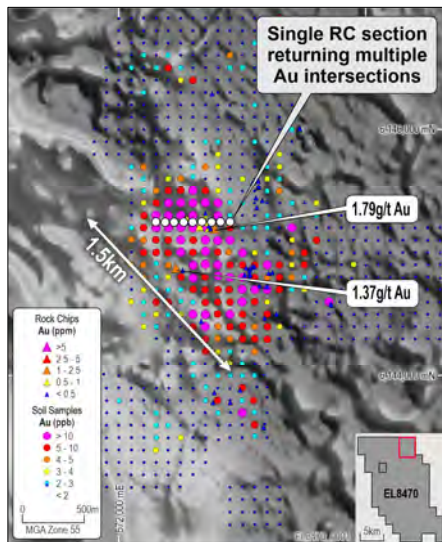
Junee JV Project » **Newmont**™ JV (KNB 20% free carried interest)

## Allawah Prospect » Orogenic Au? (2.3Moz Tomingley-style) <sup>(1)</sup>

- 1.5km x 0.7km Au-As-Sb-Te-Bi-Cu soil anomaly (Max 3,420ppb Au)
- Rock chips: 1.79g/t Au (SN9986) and 1.37g/t Au (SN9987)
- Quartz-carbonate-pyrite-arsenopyrite veining and breccias
- Pervasive sericite-carbonate-quartz-chlorite-fuchsite alteration
- Single traverse of drilling returned:**
  - 20m @ 1.15g/t Au from 52m inc. 4m @ 2.84g/t Au from 60 (JNRC025)
- **Largely untested IP Chargeability anomaly**

## Cooba East Cu-Mo Prospect » Porphyry Cu-Mo system <sup>(2)</sup>

- Drilling: 160m @ 0.10%Cu from 162m (JNRC043)
- 1.5km x 0.9km Au-Cu-Mo-Bi soils + coincident IP chargeability anomaly
- Mitta Mitta Au Prospect » Carbonate Base Metal (CBM) system <sup>(2)</sup>**
  - 28.1g/t Au, 8.85g/t Au, 8.48g/t Au rock chips
- 1.9km x 0.78km Au-As-Sb-Bo-Cu-Pb-Zn soil anomaly
- Three Tree Hill Cu-Au Prospect » Porphyry Cu-Au system <sup>(2)</sup>**
  - 18m @ 2.27g/t Au from 80m (JNRC032); 22m @ 0.5% Cu from 164m (JNRC028)



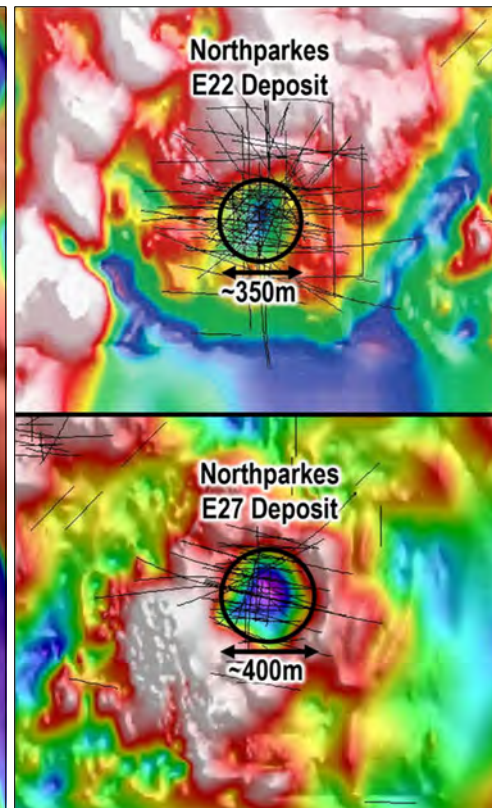
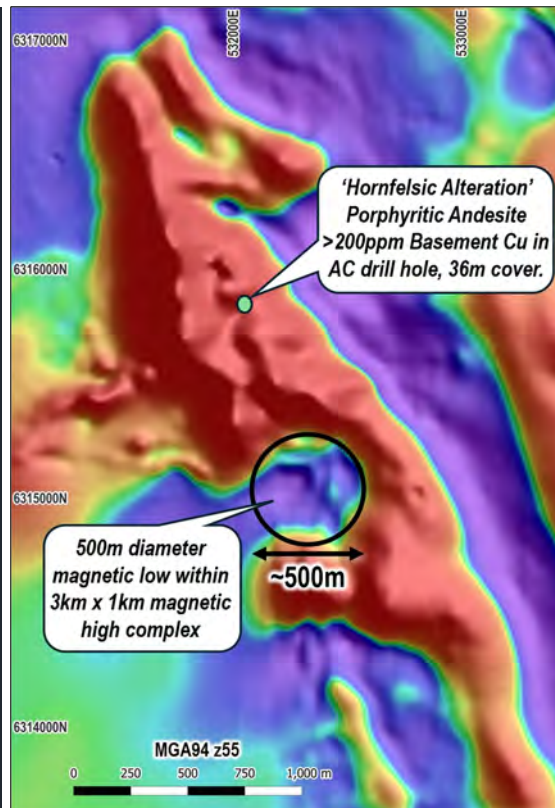


# Lachlan Project

Fairholme JV Project » **Newmont**™ JV (KNB 51% interest)

## Newmont Joint Venture » Porphyry Cu-Au Targets

- Newmont may earn up to 80% by spending AUD\$5M (at their discretion)
- Immediately north of Kincora Copper Porphyry Cu-Au Gateway Prospect (123m @ 0.62g/t Au & 0.12% Cu) <sup>(1)</sup>
- Fairholme Igneous complex
- **Most underexplored igneous complex in Cowal region**
- Prospective Ordovician stratigraphy including Phase 4 high-level shoshonitic intrusives <sup>(2)</sup> (known to host Cadia & Northparkes Mines)
- **Concealed below moderate cover (36m – 150m)**
- Arc parallel and cross-arc structures interpreted
- **Numerous Northparkes-style magnetic features (“doughnuts”) – Example at Figure right <sup>(3)</sup>**
- Anomalous Cu-Au in Aircore (>0.1g/t Au & >500ppm Cu)
- Inner propylitic alteration assemblages (chl-mt-ep)
- **Northparkes-style Targets » Drilling planned**



# Appendix 1

## Additional project information – Koonenberry Project



Atlantis Prospect, View to SW



# Koonenberry Project

## Highly Prospective Geological Setting

### Belt Scale Discovery Opportunity - 100% owned

- **District Scale land package (2,478km<sup>2</sup>)** - early mover advantage
- 160km NE of Broken Hill, 300km by road - remote, but easy access

### Extension of Western Victorian Goldfields

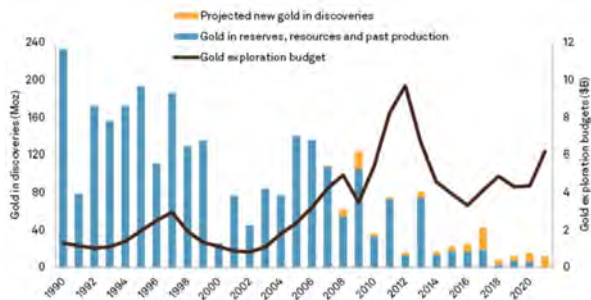
- **+5Moz orogenic gold potential (eg Stawell Gold Mine)**
- Similar timing of deformation, metamorphism and mineralisation <sup>(1)</sup>

### Low Exploration Maturity

- **Historically underexplored frontier**
  - Exploration expenditure FY21: Vic 149.3M<sup>(2)</sup>; KNB Belt <5M (est.)
  - Exploration drill metres FY21: Vic 100's km (est.); KNB Belt <5km (est.)

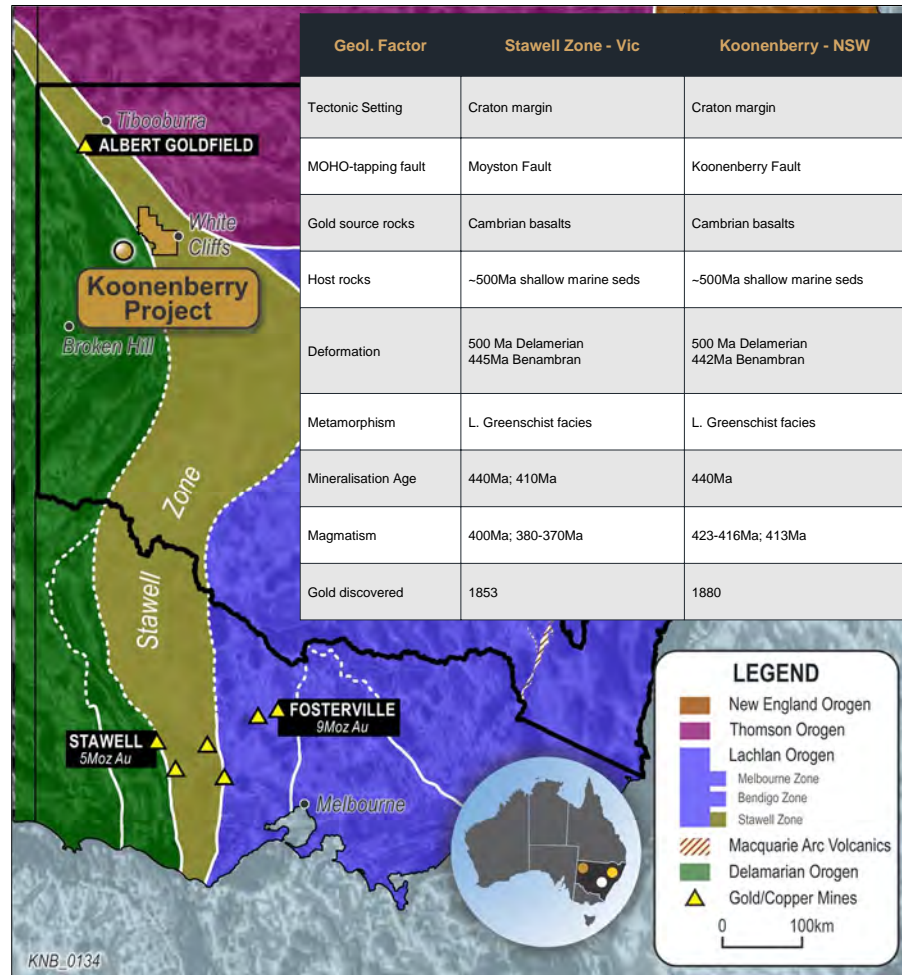
### Discovery Context

- "Lack of new major discoveries over the past decade results from companies focusing on advanced-stage assets and known deposits rather than searching for new greenfield discoveries" <sup>(3)</sup>
- **Majority of significant new discoveries come from testing new ideas:**



Data as of April 12, 2022  
Source: S&P Global Market Intelligence

- Hemi (2019) De Grey Mining; Pilbara Craton; Remote, Lack scale, "no gold" etc
  - 6.8Moz Au <sup>(3)</sup>
- Gruyere (2013) Gold Road Resources; Yamana Belt; Remote, Under cover, "wrong age" etc
  - 7.5Moz Au <sup>(3)</sup>



Notes: 1. Dieren, N.G., 2021. 2. Earth Resources Regulation Annual Statistical Report, FY2020-21, p4 – Gold only; 3. S&P Global Market Intelligence, 12/04/2022

# Koonenberry Project

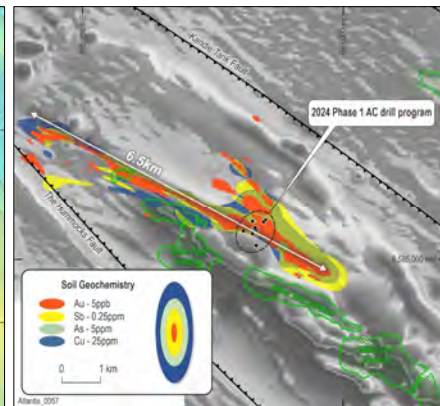
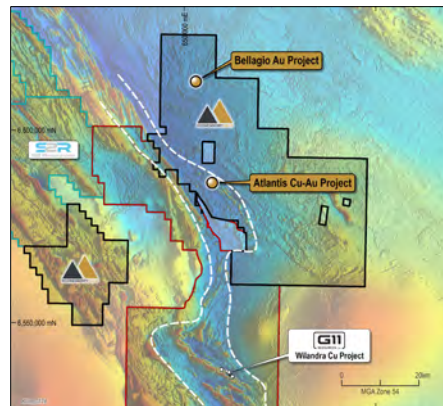
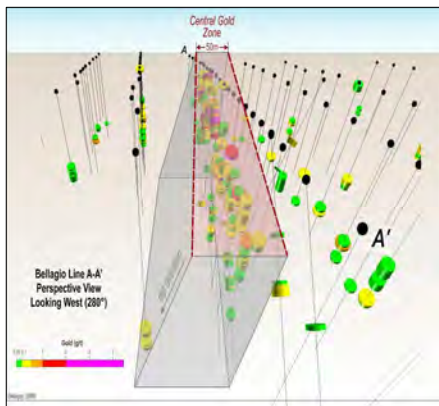
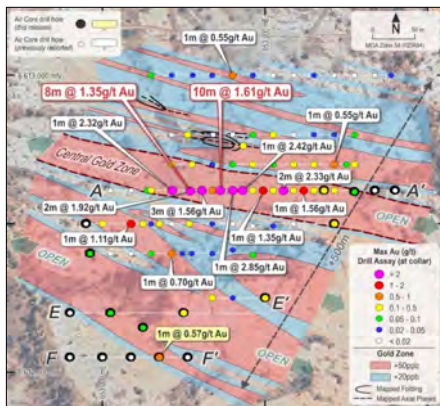
## Belt Scale Au +Cu discovery opportunity in frontier terrane

### Bellagio Au Prospect » 39.4g/t Au outcrop <sup>(1)</sup>

- Widespread 500 x 300m bedrock gold zone identified in Aircore
- 10m @ 1.61g/t Au from 18m inc. 1m @ 4.47g/t from 24m <sup>(2)</sup>
- 50m wide Central Gold Zone identified and remains undrill tested
- Royal Oak Fault controlling structure open for +20km
- Several high priority gold anomalies identified along fault
- Further drilling planned at Bellagio and Royal Oak Fault

### Atlantis Cu-Au Prospect » 15.3% Cu, 0.84g/t Au, 0.34% Pb outcrop <sup>(3)</sup>

- Favourable structural position near mantle tapping KNB Fault
- Doubly-plunging mafic dome, similar to +5Moz Stawell gold mine
- 6.5km x 900m Au-Cu-As-Sb-Pb-Zn soils
- Same stratigraphy as G11. Potential for VMS style mineralisation
- Recent drilling has not explained high grade Cu-Au at surface





# Koonenberry Project

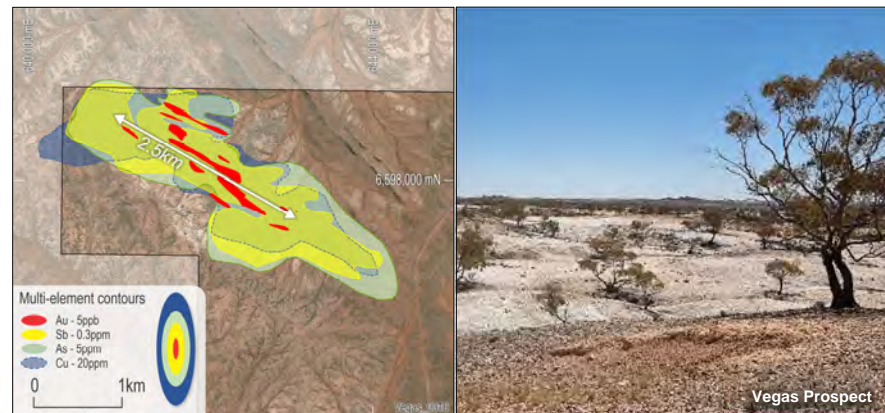
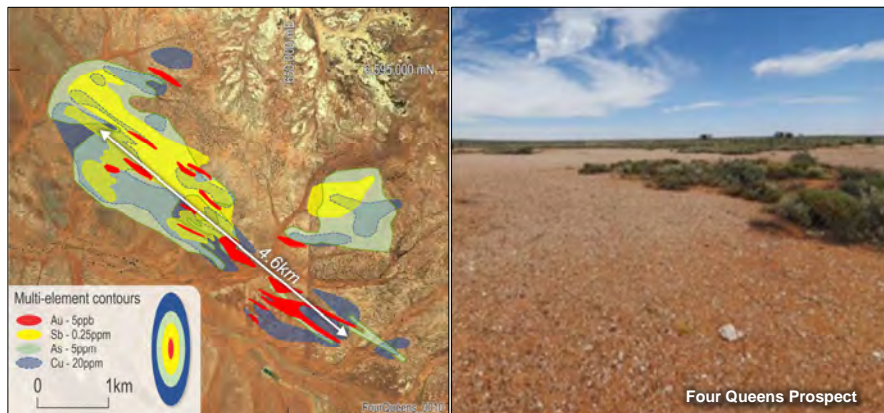
## Belt Scale Au +Cu discovery opportunity in frontier terrane

### Four Queens Prospect » High grade gold target

- Historic Lag sample results of 13.95g/t Au and 665ppm As <sup>(2)</sup>
- Gold in soil anomaly 4.6km long and up to 750m wide (+5ppb, max 55.9 ppb Au) <sup>(1)</sup>
- Au +Sb-As ±Cu pathfinder element association
- Located along second order splay on Sth margin of Nuntherungie half-graben (pull-apart basin setting)
- No previous drill testing

### Vegas Prospect » Shear zone hosted gold system

- Extensive quartz scree indicative of hydrothermal fluid flow
- Gold in soil anomaly 2.0km long and up to 450m wide (+5ppb, max 20.1 ppb Au) <sup>(1)</sup>
- Au +Sb-As ±Cu-Mo pathfinder element association
- Located near Koonenberry fault + intersection of splay faults
- Multiple stacked reefs
- No previous drill testing

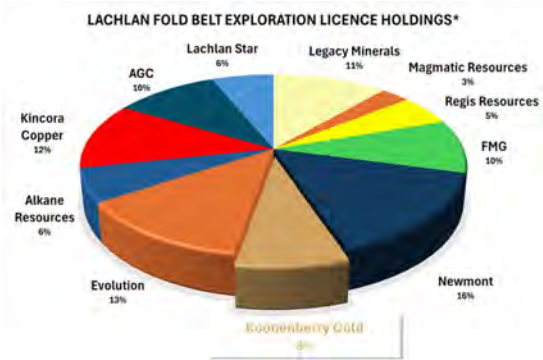


# Koonenberry Gold

## Appendix 2

Data used for ground holding comparison, p8 (20/09/2024)

Company	Km2	Tenement (Units)
Legacy Minerals	2239	814
Magmatic Resources	571	200
Regis Resources	1070	366
FMG	1892	647
Newmont	3073	1051
<b>Koonenberry Gold</b>	<b>1580</b>	<b>758</b>
Evolution	2559	875
Alkane Resources	1170	400
Kincora Copper	2347	799
AGC	2033	719
Lachlan Star	1217	





# Koonenberry Gold

## ESG



- Focusing on minimising environmental impact
- Caring for the environment and fragile ecology
- Managing biosecurity and weed prevention
- Managing environmental compliance



- Focusing on stakeholder engagement and building trust
- Implementing effective health and safety measures
- Supporting local communities
- Utilising local suppliers, logistics and hire where possible



- Focusing on responsible and ethical business practices
- Maintaining a diverse mix of skills and experience
- Managing reporting obligations
- Adhering to rigorous ASX disclosure



# Koonenberry Gold

## News & Social Media



ASX: KNB



SUBSCRIBE



# References

- 24/09/2021. Peters, J. Koonenberry Gold Pty Ltd Independent Geologist's Report - Koonenberry Gold Project 10 May 2021 contained in Koonenberry Gold Ltd Prospectus.
- 14/12/2021 KNB (ASX). Koonenberry Gold, Project update.
- 29/04/2022 KNB (ASX). Koonenberry Gold, Quarterly Activities Report for the period ending 31 March 2022.
- 24/05/2022 KNB (ASX). Structural Studies Update.
- 28/07/2022 KNB (ASX). Koonenberry Gold, Quarterly Activities Report for the period ending 30 June 2022.
- 15/08/2022 KNB (ASX). Drilling commences at Lucky Sevens high grade gold Prospect.
- 10/10/2022 KNB (ASX). Completes drilling at Lucky Sevens high grade gold Prospect.
- 24/10/2022 KNB (ASX). Koonenberry Gold, Quarterly Activities Report for the period ending 30 September 2022.
- 28/11/2022 KNB (ASX). Koonenberry Gold, Lucky Sevens High Grade Gold Prospect Update.
- 21/12/2022 KNB (ASX). Koonenberry Gold, Maiden RC Drilling Results for Lucky Sevens Gold Prospect.
- 24/02/2022 KNB (ASX). Koonenberry Gold, Commencement of 2023 Field Work following database review.
- 01/03/2023 KNB (ASX). Koonenberry Gold, EM Geophysical Survey Underway at Atlantis Au-Cu Prospect.
- 21/03/2023 KNB (ASX). Koonenberry Gold, EM Conductor detected at Atlantis Au-Cu Prospect.
- 03/04/2023 KNB (ASX). Koonenberry Gold, Exciting 22.5g/t Gold in quartz vein outcrop at Bellagio.
- 26/04/2023 KNB (ASX). Koonenberry Gold, Quarterly Activities Report for the period ended 31 March 2023.
- 31/05/2023 KNB (ASX). Bellagio Prospect and Regional Project Update.
- 25/07/2023 KNB (ASX). Koonenberry Gold. Quarterly Activities Report for the period ending 30 June 2023.
- 04/08/2023 KNB (ASX). Koonenberry Gold. Approval to commence maiden drilling program at Bellagio.
- 06/09/2023 KNB (ASX). Koonenberry Gold. Drilling program update for Bellagio Gold Prospect.
- 03/10/2023 KNB (ASX). Bellagio Gold Prospect Encouraging Initial Drill Results.
- 07/09/2023 KNB (ASX). Addendum to Bellagio Update Announcement.
- 23/10/2023 KNB (ASX). Quarterly Activities Report for period ending 30 September 2023.
- 30/10/2023 KNB (ASX). Widespread gold mineralisation identified from first pass drilling at Bellagio.
- 20/11/2023 KNB (ASX). High impact follow up drilling to commence at Bellagio.
- 12/12/2023 KNB (ASX). Bellagio drilling intersects visible gold and widespread alteration.
- 16/01/2024 KNB (ASX). Approval to commence maiden drilling program at Atlantis.
- 31/01/2024 KNB (ASX). Quarterly Activities Report for the period ending 31 December 2023.
- 05/02/2024 KNB (ASX). Bellagio drilling defines widespread gold mineralisation.
- 10/04/2024 KNB (ASX). Commencement of drilling at Atlantis Cu-Au Project.
- 19/04/2024 KNB (ASX). Project update.
- 30/04/2024 KNB (ASX). Quarterly Activities Report for the period ending 31 March 2024.
- 28/05/2024 KNB (ASX). Copper mineralisation intersected at Atlantis.
- 13/06/2024 KNB (ASX). Bellagio gold footprint extended and new targets defined.
- 19/06/2024 KNB (ASX). Drilling to test priority Cu-Au targets at Atlantis.
- 23/07/2024 KNB (ASX). Quarterly Activities Report for the period ended 30 June 2024.
- 30/07/2024 KNB (ASX). Downhole geophysics commenced at Atlantis.
- 17/10/2024 KNB (ASX). Transformational acquisition of exciting NSW Au and Cu/Au portfolio.
- 18/11/2024 KNB (ASX). KNB commences Ground EM Geophysics at Atlantis Cu-Au Prospect.
- 07/01/2025 KNB (ASX). Initial fieldwork at Breakfast Creek confirms high-grade gold-copper along 6km trend.
- 16/01/2025 KNB (ASX). Newmont commences drilling at Junee Cu-Au Project.
- 20/01/2025 KNB (ASX). KNB identifies 4km gold trend at Prince of Wales Project.
- 24/01/2025 KNB (ASX). Quarterly Activities Report for the period ending 31 December 2024.

# References

- Alan Wilson, 2022. GeoAqua Consultants Ltd, Internal Report for Gilmore Metals.
- Alkane 2023. ASX Announcement, Boda Resource Update Increases Gold and Copper Grades, 14 December 2023 CMOC 2023.
- Buchhorn, D.A. 1972. Exploration report EL 303, Obley - Yeoval area. R00025116 (GS1971/052), p30.
- China Molybdenum Company Limited, 2022 Annual Report, <http://www.cmocinternational.com>
- Crawford, Cooke and Fanning, 2007. Geochemistry and age of magmatic rocks in the unexposed Narromine, Cowal and Fairholme Igneous Complexes in the Ordovician Macquarie Arc, New South Wales.
- Evolution Mining (ASX:EVN), 2023. Mining Annual Mineral Resources and Ore Reserves Statement.
- Evolution Mining (ASX:EVN), 07/092017. Cowal Gold Mine, District Geology Overview.
- Foster, J. T., 1977. Exploration report ELs 761 and 819, Wamboyn, R00011956.
- Gilligan, L. B., 1980. An inspection of the Prince of Wales Gold Mine, Gundagai. R00011444 (GS1980/010).
- Glen, Quinn, Cooke., 2012. The Macquarie Arc, Lachlan Orogen, New South Wales: its evolution, tectonic setting and mineral deposits, Episodes Vol. 35, No 1.
- Harris, Cooke, Cuisson, Groome, Wilson, Fox, Holliday, Tosdal., 2020. Geologic Evolution of Late Ordovician to Early Silurian Alkaline Porphyry Au-Cu Deposits at Cadia, New South Wales, Australia, SEG Special Publication 23.
- Holliday and Cooke, 2007. Advances in Geological Models and Exploration Methods for Copper + Gold Porphyry Deposits "Proceedings of Exploration 07: Fifth Decennial International Conference on Mineral Exploration."
- Larvotto Resources (ASX:LRV), 2023. Hillgrove Acquisition Amended Release 1.4Moz @ 6.1g/t AuEq Gold-Antimony Hillgrove Project Acquired (22/12/2023).
- Lye A., Crook G., Kolff van Oosterwijk L., 2006. The Discovery History of the Northparkes Deposits. Mines & Wines 2006 – Mineral Exploration in New South Wales – SMEDG & DPI Geological Survey.
- McDonald, 2006. Third Annual Exploration Report R00002515 p290. Co-ords from Minview Gold Occurrence.
- Newmont 2023 (ASX:NEM). Mining Annual Mineral Resources and Ore Reserves Statement, <https://operations.newmont.com/reserves-and-resources>.
- Unknown Author, 1976. First report ELs 761 and 819 Wamboyn, R00013497. Coordinates from Minview Geochemistry.
- Phillips, G. N. (Ed), 2017. Australian Ore Deposits (The Australasian Institute of Mining and Metallurgy: Melbourne).
- Regis Resources (ASX:RRL), 2023. Annual Mineral Resource and Ore Reserve Statement 8 June 2023.
- Silver Mines (ASX:SVL), 2024. Investor Marketing, Precious Metals Summit, Beaver Creek (10/09/2024).
- Smart, G and Wilkins, C., 1997. The Geology of the Browns Creek Gold-Copper Skarn Deposit, Blaney, NSW
- Catalyst Minerals (ASX: CYL), 17/05/2022. Gold grades of up to 831g/t at Lawry Prospect, Tandarra.
- Manhattan Corporation (ASX: MHC), 06/12/2021. Drilling intersects 8m at 40.5g/t Au.
- Manhattan Corporation (ASX: MHC), 23/03/2022. Outstanding wide zones of shallow gold.
- North Stawell Minerals (ASX: NSM), 2021.01.31. December 2021 Quarterly Activities Report, p14.
- North Stawell Minerals (ASX: NSM), 21/06/2023. Technical Update June 2023 – OREAS Vic Round Up Conference.
- Cayley, R. A., et al., 2011. Crustal architecture of central Victoria: results from the 2006 deep crustal reflection seismic survey.
- Direen, N. G., 2021. Koonenberry seismic reinterpretation of reprocessed data. Internal report for Koonenberry Gold Ltd.
- Greenfield J. and Reid, W., 2006. Orogenic gold in the Tibooburra area of northwestern NSW a ~440 Ma ore system with comparison to the Victorian Goldfields.
- Miller, J., et al., 2005. Evolution of a reworked orogenic zone: The boundary between the Delamarian and Lachlan fold belts, southeastern Australia.
- Phillips, D., et al., 2012. Timing of gold mineralisation in the western Lachlan Orogen, SE Australia: A critical overview.
- Victorian State Government, 2021. Earth Resources Regulation Annual Statistical Report FY2020-21.
- Willman, et al., 2010. Crustal-Scale Fluid Pathways and Source Rocks in the Victorian Gold Province, Australia: Insights from Deep Seismic Reflection Profiles (Society of Economic Geologists, Inc. Economic Geology, v. 105, pp. 895–915).