



WEST AFRICA'S EMERGING MID TIER PRODUCER

TARGETING +420,000 ozpa GOLD PRODUCTION BY 2025

Investor Presentation February 2025



IMPORTANT NOTICE

DISCLAIMER

The following notice and disclaimer apply to this presentation (**Presentation**) and you are advised to read this carefully before reading or making any other use of this Presentation or any information contained in this Presentation.

This Presentation is dated 3 February 2025 and has been prepared by West African Resources Limited (**WAF** or the **Company**). The Company together with its subsidiaries are referred to in this Presentation as **West African** or the **Group**.

The Company and its subsidiaries and each of their respective directors, agents, officers, employees and advisers expressly disclaim, to the maximum extent permitted by law, all liabilities (however caused, including negligence) in respect of, make no representations regarding, and take no responsibility for, any part of this Presentation and make no representation or warranty as to the currency, accuracy, reliability or completeness of any information, statements, opinions, conclusions or representations contained in this Presentation. In particular, this Presentation does not constitute, and shall not be relied upon as, a promise, representation, warranty or guarantee as to the past, present or the future performance of the Company.

SUMMARY INFORMATION

This Presentation is a summary only, containing summary information about West African and remains subject to change without notice. The information in this Presentation is general in nature and does not purport to be accurate nor complete, nor does it contain all of the information that an investor may require in evaluating a possible investment in WAF, nor does it contain all the information which would be required in a disclosure document or prospectus prepared in accordance with the requirements of the *Corporations Act 2001* (Cth). It has been prepared by WAF with due care but no representation or warranty, express or implied, is provided in relation to the accuracy, reliability, fairness or completeness of the information, opinions or conclusions in this Presentation by WAF. The information set out in this Presentation is current as at the date of the Presentation (unless otherwise indicated) and WAF has no obligation to finalise, correct or update the content of this Presentation. Certain data used in this Presentation may have been obtained from research, surveys or studies conducted by third parties, including industry or general publications. To the maximum extent permitted by law, WAF is not responsible for updating, nor does it undertake to update, this Presentation. It should be read in conjunction with WAF's other periodic and continuous disclosure announcements lodged with the ASX, which are available at www2.asx.com.au or at <https://www.westafricanresources.com/investor-centre/announcements/>.

NOT AN OFFER

Neither this Presentation nor any of its contents will form the basis of any understanding, proposal, offer, invitation, contract or commitment. This Presentation does not constitute or contain an offer, invitation, solicitation or recommendation to subscribe for, acquire or sell any securities in WAF or any other financial products or securities, in any place or jurisdiction. This document is not a prospectus, product disclosure statement or other offering document under Australian law or any other law, and will not be lodged with the Australian Securities and Investments Commission.

NOT FINANCIAL PRODUCT ADVICE

This Presentation, and the information provided in it, does not constitute, and is not intended to constitute, financial product or investment advice, financial, legal, tax accounting or other advice, or a recommendation to acquire any securities of WAF. It has been prepared without taking into account the objectives, financial or tax situation or particular needs of any individual. Before making an investment decision, prospective investors should consider the appropriateness of the information having regard to their own objectives, financial and tax situation and needs and seek professional advice from their legal, financial, taxation or other independent adviser (having regard to the requirements of all relevant jurisdictions). WAF is not licensed to provide financial product advice in respect of an investment in shares.

FINANCIAL DATA

All dollar values in this Presentation are in either Australian Dollars (A\$ or AUD\$) or United States Dollars (US\$) as indicated.

PAST PERFORMANCE

Past performance metrics and figures (including past share price performance of WAF), as well as pro forma financial information, included in this Presentation are given for illustrative purposes only and should not be relied upon as (and are not) an indication of WAF's views on WAF's future financial performance or condition or prospects. Investors should note that past performance of WAF, including in relation to the historical trading price of WAF shares, production, mineral resources and ore reserves, costs and other historical financial information cannot be relied upon as an indicator of (and provide no guidance, assurance or guarantee as to) future WAF performance. The historical information included in this Presentation is, or is based on, information that has previously been released to the market.

NON IFRS FINANCIAL MEASURES

The Company has included certain non-IFRS financial measures in this Presentation, including adjusted cash costs and all-in sustaining costs (**AISC**) per ounce of gold produced. These non-IFRS financial measures do not have any standardised meaning. Accordingly, these financial measures are intended to provide additional information and should not be considered in isolation or as a substitute for measures of performance prepared in accordance with International Financial Reporting Standards (**IFRS**). Operating cash costs and all-in-sustaining cash costs are a common financial performance measure in the mining industry but have no standard definition under IFRS. Operating cash costs are reflective of the cost of production. AISC include operating cash costs, net-smelter royalty, corporate costs, sustaining capital expenditure, sustaining exploration expenditure and capitalised stripping costs. EBITDA also has no standard definition under IFRS. The Company calculates EBITDA as net profit or loss for the period excluding finance costs, income tax expense and depreciation. EBITDA excludes the impact of cash costs of financing activities and taxes and the effects of changes in working capital balances and therefore is not necessarily indicative of operating profit or cash flow from operations as determined under IFRS. Other companies may calculate these measures differently.

FORWARD LOOKING STATEMENTS

This Presentation contains “forward-looking information” including information relating to WAF's future financial or operating performance. All statements in this presentation, other than statements of historical fact, that address events or developments that WAF expects to occur, are “forward-looking statements”. Forward-looking statements are statements that are not historical facts and are generally, but not always, identified by the words “expects”, “does not expect”, “plans”, “anticipates”, “does not anticipate”, “believes”, “intends”, “estimates”, “projects”, “potential”, “scheduled”, “forecast”, “budget” and similar expressions, or that events or conditions “will”, “would”, “may”, “could”, “should” or “might” occur. All such forward-looking statements are based on the opinions and estimates of the relevant management as of the date such statements are made and are subject to important risk factors and uncertainties, many of which are beyond WAF's ability to control or predict. Forward-looking statements are necessarily based on estimates and assumptions that are inherently subject to known and unknown risks, uncertainties and other factors that may cause actual results, level of activity, performance or achievements to be materially different from those expressed or implied by such forward-looking statements.

In the case of WAF, these facts include, in particular: operating cashflows and net profit after tax (**NPAT**) which are based on assumptions including, but not limited to: meeting production estimates, mineral resource and ore reserve estimates not having to be re-estimated, no unexpected costs arising, the availability of future funding for the development of projects and no adverse circumstances from the uncertainties listed below eventuating. This information relates to analyses and other information that is based on expectations of future performance and planned work programs. Statements concerning mineral resource and ore reserve estimates and future production may also be deemed to constitute forward-looking information.

IMPORTANT NOTICE

FORWARD LOOKING STATEMENTS continued

Other forward-looking information includes: estimates of internal rates of return; net present value; future production; estimates of cash cost; assumed long term price for gold; proposed mining plans and methods; mine life estimates; cashflow forecasts; metal recoveries; and estimates of capital and operating costs. Furthermore, with respect to specific forward-looking information concerning the development of the Kiaka Gold Project, WAF has based its assumptions and analysis on certain factors that are inherently uncertain. Uncertainties include, among others:

1. the adequacy of infrastructure;
2. unforeseen changes in geological characteristics;
3. metallurgical characteristics of mineralisation;
4. the price of gold;
5. the availability of equipment and facilities necessary to complete development and commence operations;
6. the cost of consumables and mining and processing equipment;
7. unforeseen technological and engineering problems;
8. accidents or acts of sabotage or terrorism;
9. currency fluctuations;
10. changes in laws or regulations;
11. the availability and productivity of skilled labour;
12. the regulation of the mining industry by various governmental agencies;
13. in country risks and political factors;
14. fluctuations in gold price;
15. results of drilling;
16. metallurgical testing and other studies;
17. proposed mining operations, including dilution;
18. the evaluation of mine plans subsequent to the date of any estimates; and
19. the possible failure to receive, or changes in, required permits, approvals and licenses.

Forward-looking information is subject to a variety of known and unknown risks, uncertainties and other factors which could cause actual events or results to differ from those expressed or implied by the forward-looking information, including, without limitation, risks related to: exploration hazards; exploration and development of natural resource properties; uncertainty in the ability to obtain funding; gold price fluctuations; recent market events and conditions; the uncertainty of mineral resource calculations and the inclusion of inferred mineral resources in economic estimation; governmental regulations; obtaining necessary licenses and permits; the business being subject to environmental laws and regulations; the mineral properties being subject to prior unregistered agreements, transfers, or claims and other defects in title; competition from larger companies with greater financial and technical resources; the inability to meet financial obligations under agreements to which it is a party; ability to recruit and retain qualified personnel; and directors and officers becoming associated with other natural resource companies which may give rise to conflicts of interests. This list is not exhaustive of the factors that may affect WAF's forward-looking information. Should one or more of these risks and uncertainties materialise, or should underlying assumptions prove incorrect, actual results may vary materially from those described in the forward-looking information.

WAF's forward-looking information is based on the reasonable beliefs, expectations and opinions of the relevant management on the date the statements are made and WAF does not assume any obligation to update forward looking information if circumstances or management's beliefs, expectations or opinions change, except as required by law. For the reasons set forth above, investors should not place undue reliance on forward-looking information. For additional information, please refer to WAF's financial statements and other filings all of which are filed on the ASX at www.asx.com.au and the Company's website www.westafricanresources.com.

MINERAL RESOURCES, ORE RESERVES AND PRODUCTION TARGETS

The Company's estimate of Ore Reserves and the production target for the Sanbrado Project (including the Toega Deposit) and the Company's estimate of Mineral Resources for the Group are set out in the announcement titled "WAF Resource, Reserve and 10 year production update 2024" released on 28 February 2024. The Company confirms it is not aware of any new information or data that materially affects the information included in that announcement and that all material assumptions and technical parameters underpinning the estimates of Mineral Resources for the Group and Ore Reserves for the Sanbrado Project and all the material assumptions underpinning the production target and forecast financial information derived from it continue to apply and have not materially changed.

The Company's estimates of Ore Reserves and the production target for the Kiaka Project are set out in the announcement titled "Kiaka Feasibility Update Delivers 4.8Moz Gold Ore Reserve 20 Year Mine Life" released on 2 July 2024. The Company confirms it is not aware of any new information or data that materially affects the information included in that announcement and that all material assumptions and technical parameters underpinning the estimate of Ore Reserves for the Kiaka Project and all the material assumptions underpinning the production target for the Kiaka Project and the forecast financial information derived from it continue to apply and have not materially changed.

EXPLORATION RESULTS

The exploration results referred to in this Presentation were reported in the announcements titled "WAF intercepts 25m at 90 g/t gold M1 South M5 deep drilling and underground studies commenced" released 15 December 2022, "20.5m at 4.1 g/t Gold Confirms Underground Potential at M5" released on 23 August 2023, "Amended M5 South UG Mineral Resource and Scoping Study" released 13 December 2023, "WAF Resource, Reserve and 10 year production update 2024" released 28 February 2024, "WAF hits 30m at 4.1 g/t gold in grade control at Kiaka" released on 31 July 2024 and "West African hits 45m at 7.3 g/t gold below reserves at M1S" released 20 August 2024 and "West African hits 36m at 11.1 g/t gold below reserves at M1S" released 15 October 2024. The Company is not aware of any new information or data that materially affects the information included in those announcements.

JORC CODE

It is a requirement of the ASX Listing Rules that the reporting of Ore Reserves and Mineral Resources in Australia comply with the JORC Code. Investors outside Australia should note that while the Company's estimates of Ore Reserve and Mineral Resource in this Presentation comply with the JORC Code (such JORC Code-compliant Ore Reserves and Mineral Resources being referred to as **Ore Reserves** and **Mineral Resources** respectively), they may not comply with the relevant guidelines in other countries and, in particular, do not comply with (i) NI 43-101; or (ii) Item 1300 of Regulation S-K, which governs disclosures of mineral reserves in registration statements filed with the SEC. Information contained in this Presentation describing mineral deposits may not be comparable to similar information made public by companies subject to the reporting and disclosure requirements of Canadian or US securities laws.

WEST AFRICA'S EMERGING MID-TIER GOLD PRODUCER

100% UNHEDGED MINERAL RESOURCES AND ORE RESERVES



2024 Production	Mineral Resources	Ore Reserves	10 Year Production Target	Exploration Permits	Market Capitalisation
206,622 oz	12.8 Moz	6.4 Moz	4.2 Moz	+1,300 km ²	A\$1,858m*
AISC US\$1,240/oz	100% Unhedged	83% Ore Reserves			A\$446m in cash and bullion** US\$250m debt facility fully drawn

There is a low level of geological confidence associated with Inferred Mineral Resources, and there is no certainty that further exploration work will result in the determination of Indicated Mineral Resources or that the production target itself will be realised.

*As at 23 January 2025

**As at 31 December 2024

Refer ASX announcements titled "WAF Resource, Reserve and 10 year production update 2024" released 28 February 2024 and "WAF Updates Ore Reserves and 10 Year Production Target" released 2 July 2024.

WEST AFRICAN RESOURCES LTD

BOARD AND MANAGEMENT



Richard Hyde
Founder, CEO and
Executive Chairman



Lyndon Hopkins
Executive Director and
Chief Operating Officer



Rod Leonard
Independent
Lead Director



Nigel Spicer
Non-Executive
Director



Libby Mounsey
Executive Director of
Human Resources



Stewart Findlay
Non-Executive Director



Robin Romero
Non-Executive
Director



Padraig O'Donoghue
Chief Financial Officer and
Company Secretary



Annie Atkins
Legal Counsel and
Joint Company Secretary



Matthew Scully
Project Director
Kiaka Gold Project



Seydi Nabbe
Country Manager



Luke Holden
Operations Manager



Mirey Lopez
General Manager
Sustainability



Todd Giltay
General Manager
Finance

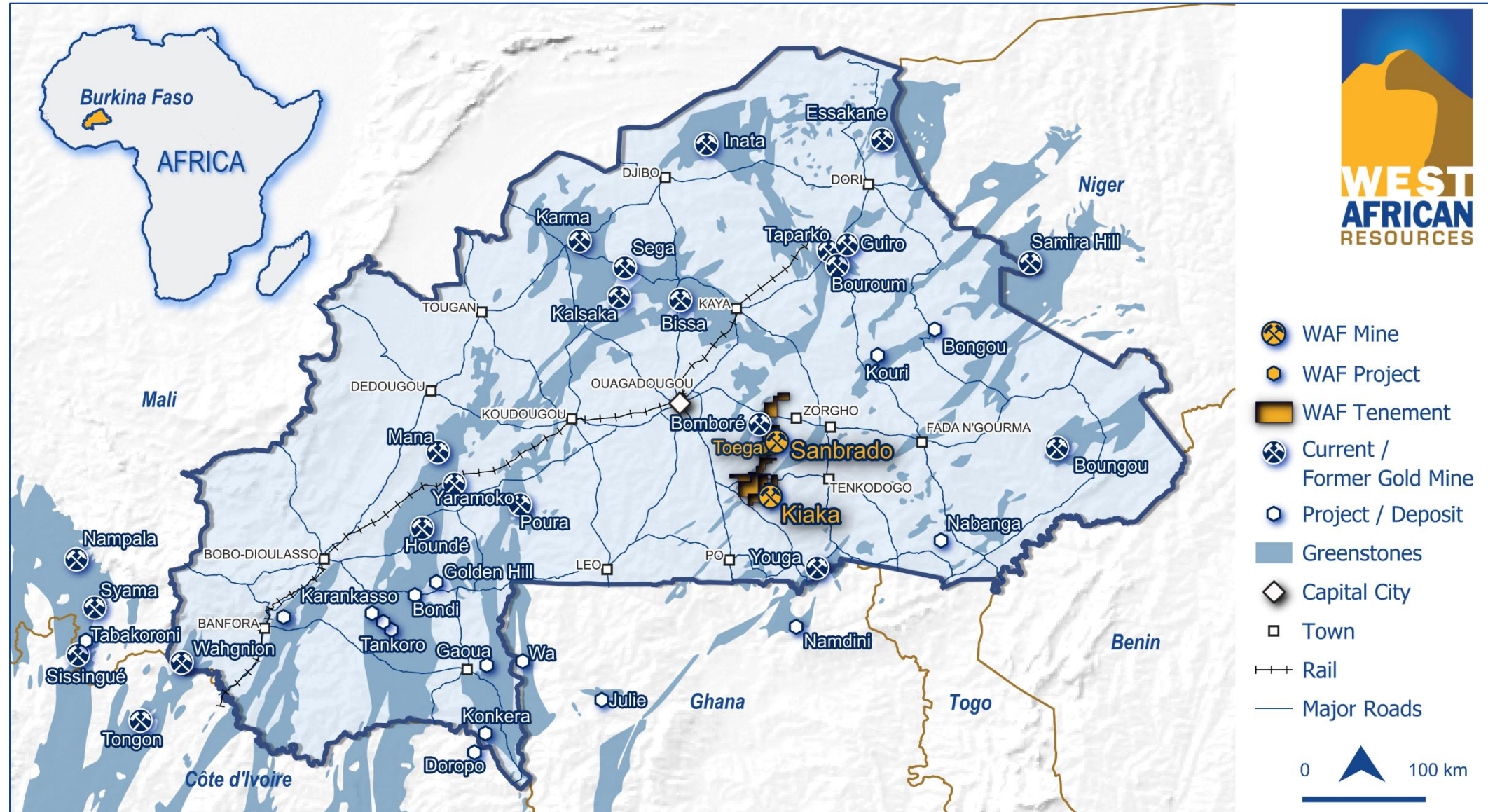


Bruce Morton
General Manager
Risk



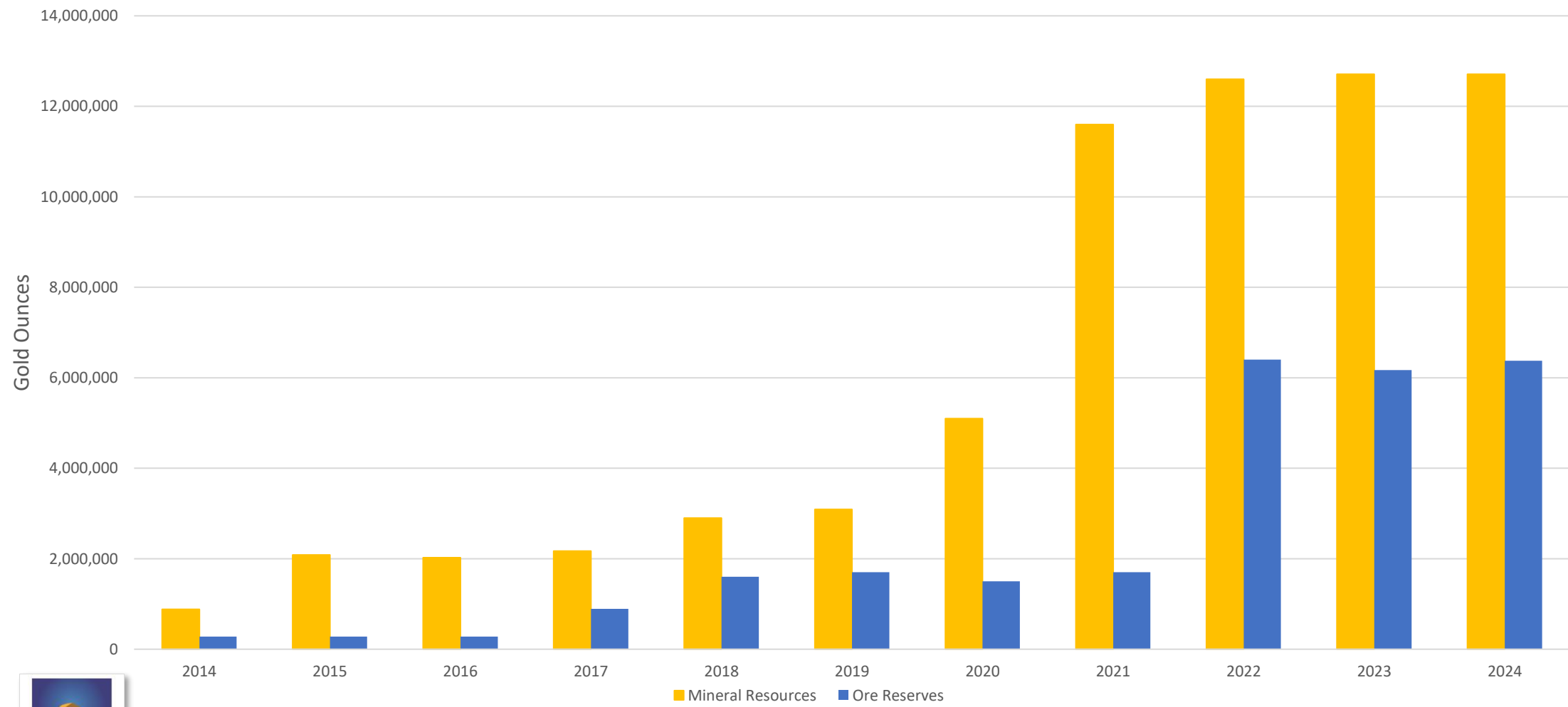
Chris Lusty
General Manager
Technical Services

WAF PROJECT LOCATIONS



WEST AFRICAN RESOURCES LTD

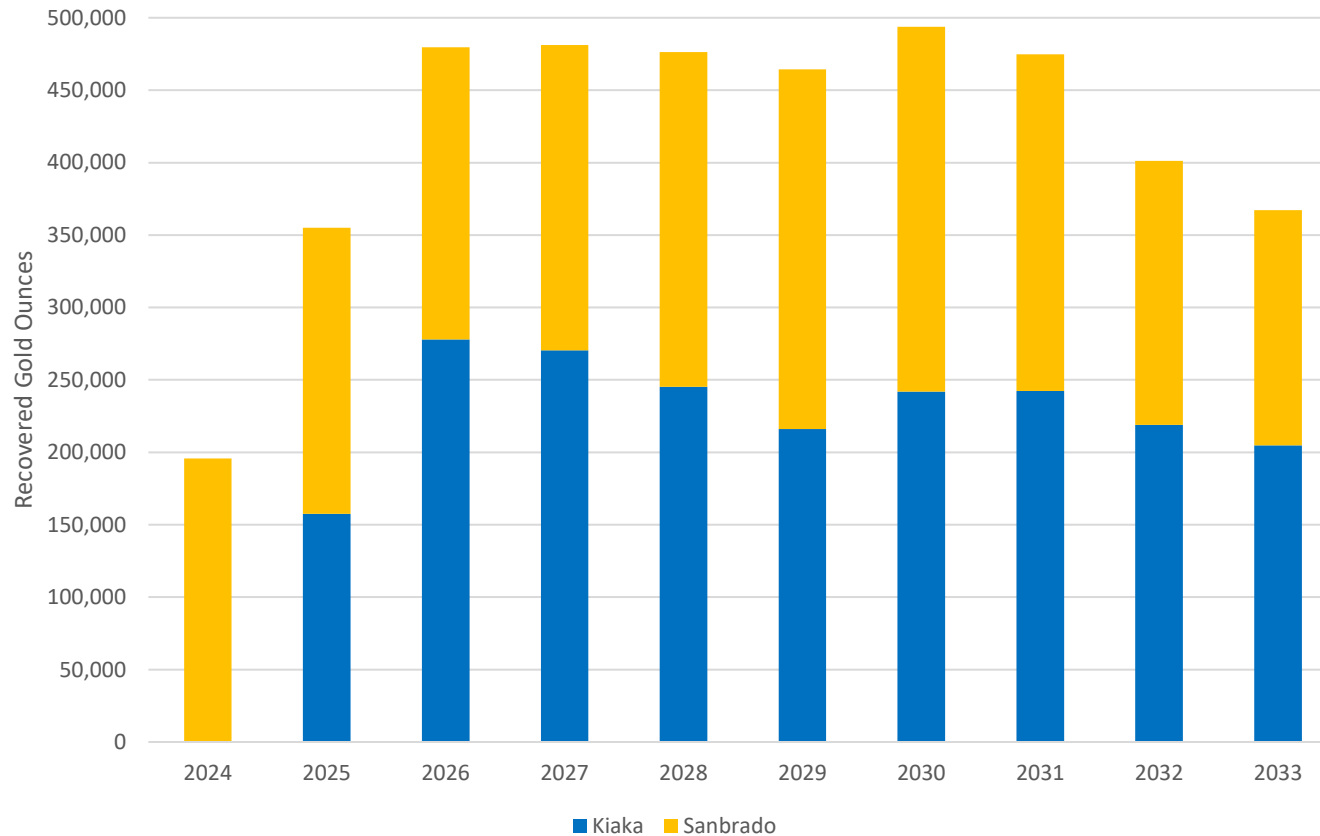
OUTSTANDING HISTORY OF RESOURCE & RESERVE GROWTH



For further details, please refer to ASX announcements titled “WAF Resource, Reserve and 10 year production update 2024” released 28 February 2024 and “WAF Updates Ore Reserves and 10 Year Production Target” released 2 July 2024. Mineral Resources are reported inclusive of those Mineral Resources that have been modified to Ore Reserves. Mineral Resources that are not Ore Reserves do not have demonstrated economic viability. All tonnage, grade and contained metal content estimates have been rounded. Rounding may result in apparent summation differences between tonnes, grade, and contained metal content.

WEST AFRICAN RESOURCES LTD

10 YEAR PRODUCTION TARGET



There is a low level of geological confidence associated with Inferred Mineral Resources, and there is no certainty that further exploration work will result in the determination of Indicated Mineral Resources or that the production target itself will be realised.

- 10-year production target to average:
 - +420,000 oz pa 2024-33
 - +480,000 oz pa 2026-31
 - 4.2 Moz production 2024-33
- 10-year production target based on 83% Ore Reserves at a conservative gold price of US\$1400/oz
- Active exploration on >1300 km² near-mine tenements:
 - 35,000m of air core, reverse circulation and diamond drilling
 - 32,000m of auger drilling
 - airborne geophysical programs



Refer ASX announcements titled “WAF Resource, Reserve and 10 year production update 2024” released 28 February 2024 and “WAF Updates Ore Reserves and 10 Year Production Target” released 2 July 2024.

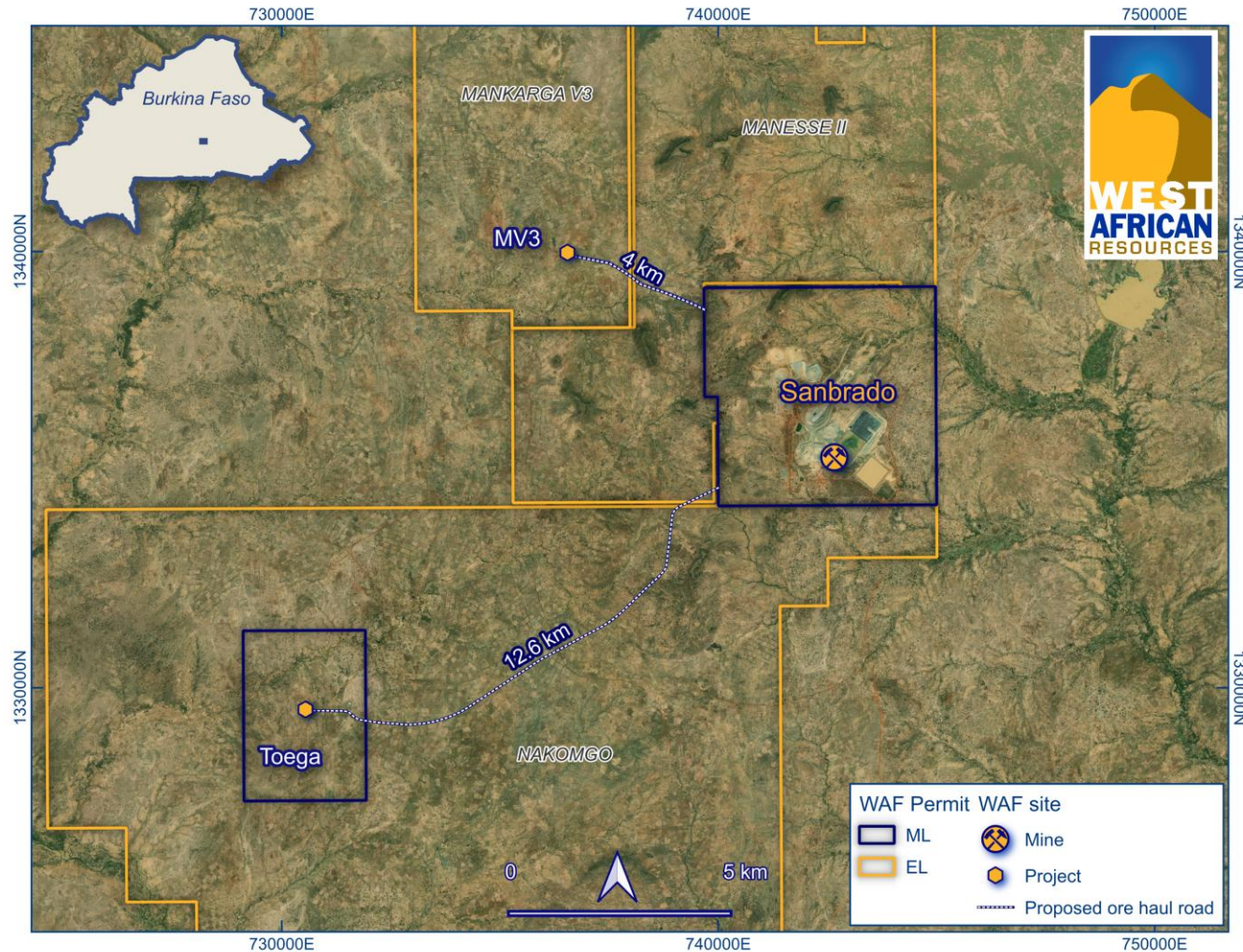
WEST AFRICAN RESOURCES LTD

SANBRADO GOLD OPERATIONS



SANBRADO GOLD MINE

KEY PROJECT METRICS



Location	South-central Burkina Faso, West Africa
Ownership	WAF 90%; Burkina Faso government 10%
Type	Contract open-pit and underground mining
Resources	83 Mt at 1.83 g/t for 4.9 Moz gold (US\$2,000)
Reserves	19.8 Mt at 2.4 g/t for 1.5 Moz gold (US\$1,400)
Reserves + Inventory	27.3 Mt at 3.1 g/t for 2.7 Moz gold (US\$1,400)
Mine life	15 years
Processing	Conventional 3.2 Mtpa CIL + gravity
Recovery LOM	94%
First production	March 2020
2024 production	206,622 oz at AISC of US\$1,240/oz
Workforce	93% Burkinabe including 50% from local region
Safety	TRIFR of 1.51 (WA gold mining IFR 6.09)*
Tax	27.5%
Gov. participation	10% equity, 5-7% royalty + 1% community fund

There is a low level of geological confidence associated with Inferred Mineral Resources, and there is no certainty that further exploration work will result in the determination of Indicated Mineral Resources or that the production target itself will be realised.

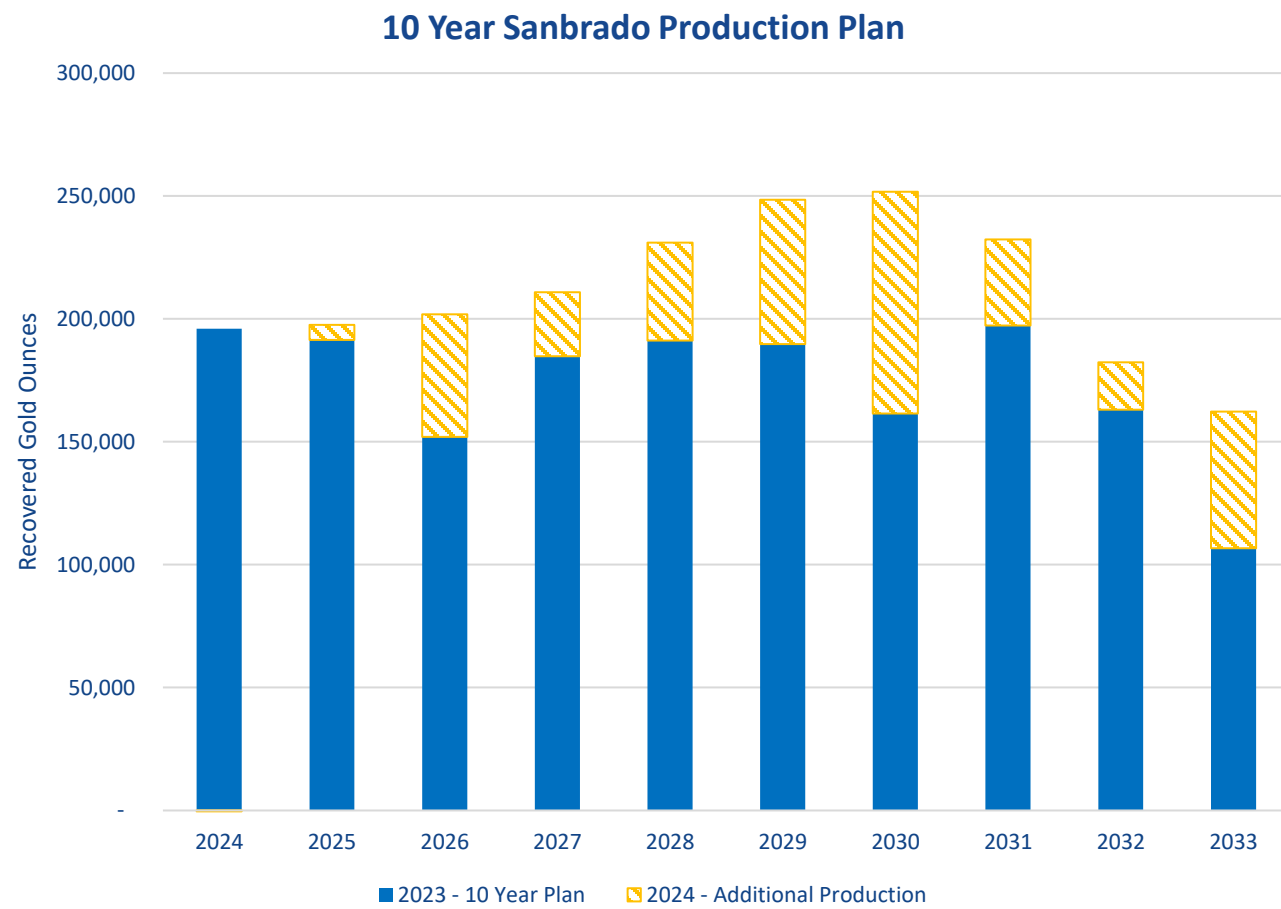
Refer ASX announcement titled "WAF Resource, Reserve and 10 year production update 2024" released 28 February 2024. Figures above include Sanbrado, Toega and MV3.

* The Injury Frequency Rate (IFR) for the gold industry in Western Australia for the most recent available reporting period, pp 16 and 20 of the publication *Department of Energy, Mines, Industry Regulation and Safety, 2024, Safety performance in the Western Australian mineral industry — accident and injury statistics 2021–22. Department of Energy, Mines, Industry Regulation and Safety, Western Australia, 54 pp*

SANBRADO GOLD MINE

4 YEARS OF MEETING OR BEATING GUIDANCE

- 2024 Summary:
 - Processed: 3.4Mt at 2.0 g/t gold
 - 93.3% recovery
 - Produced: 206,622 oz
 - Gold sold: 199,550 oz
 - Costs: AISC US\$1,240/oz*
 - Avg Sale price: US\$2,391/oz unhedged
- 2025 production guidance to be released in Q1
- 10-year production outlook to be released Q2



There is a low level of geological confidence associated with inferred mineral resources, and there is no certainty that further exploration work will result in the determination of indicated mineral resources or that the production target itself will be realised.

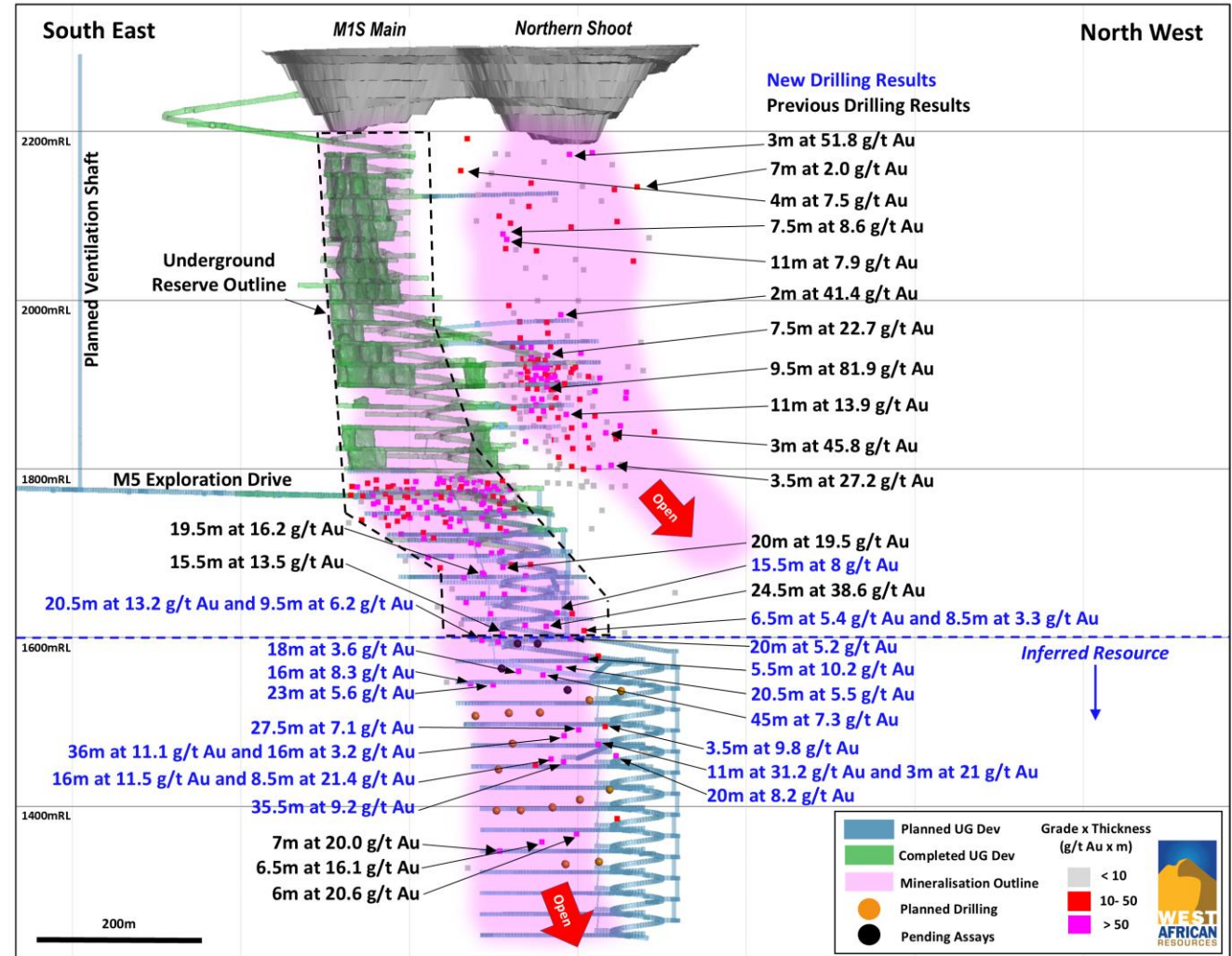


* unaudited
Refer ASX announcements titled “WAF Resource, Reserve and 10 year production update 2024” released 28 February 2024 and titled “2023 Annual Report” released 14 March 2024.

RESOURCE EXTENSION

M1 SOUTH

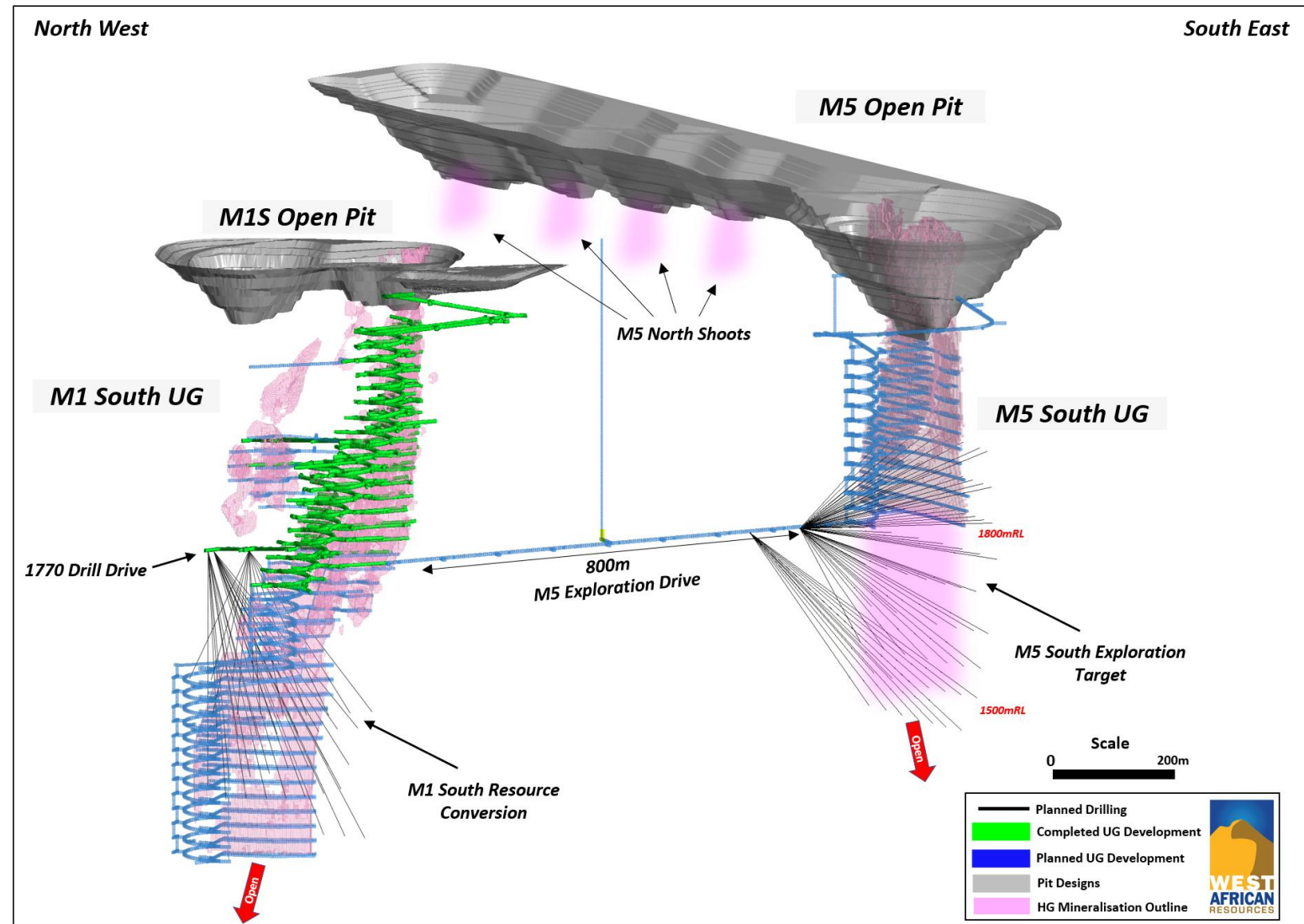
- 18,000m resource definition drilling program is in progress, targeting inferred mineral resource between 1600mRL and 1350mRL
- Results to date are in-line with current Mineral Resource Estimate
- Significant results from resource definition drilling include:
 - 45m at 7.3 g/t Au
 - 16m at 8.3 g/t Au
 - 36m at 11.1 g/t Au
 - 11m at 31.2 g/t Au
 - 35.5m at 9.2 g/t Au
 - 20.5m at 13.2 g/t Au
- Updated Mineral Resource Estimate and Ore Reserves expected in Q2 2025



NEAR MINE GROWTH

M5 UNDERGROUND POTENTIAL

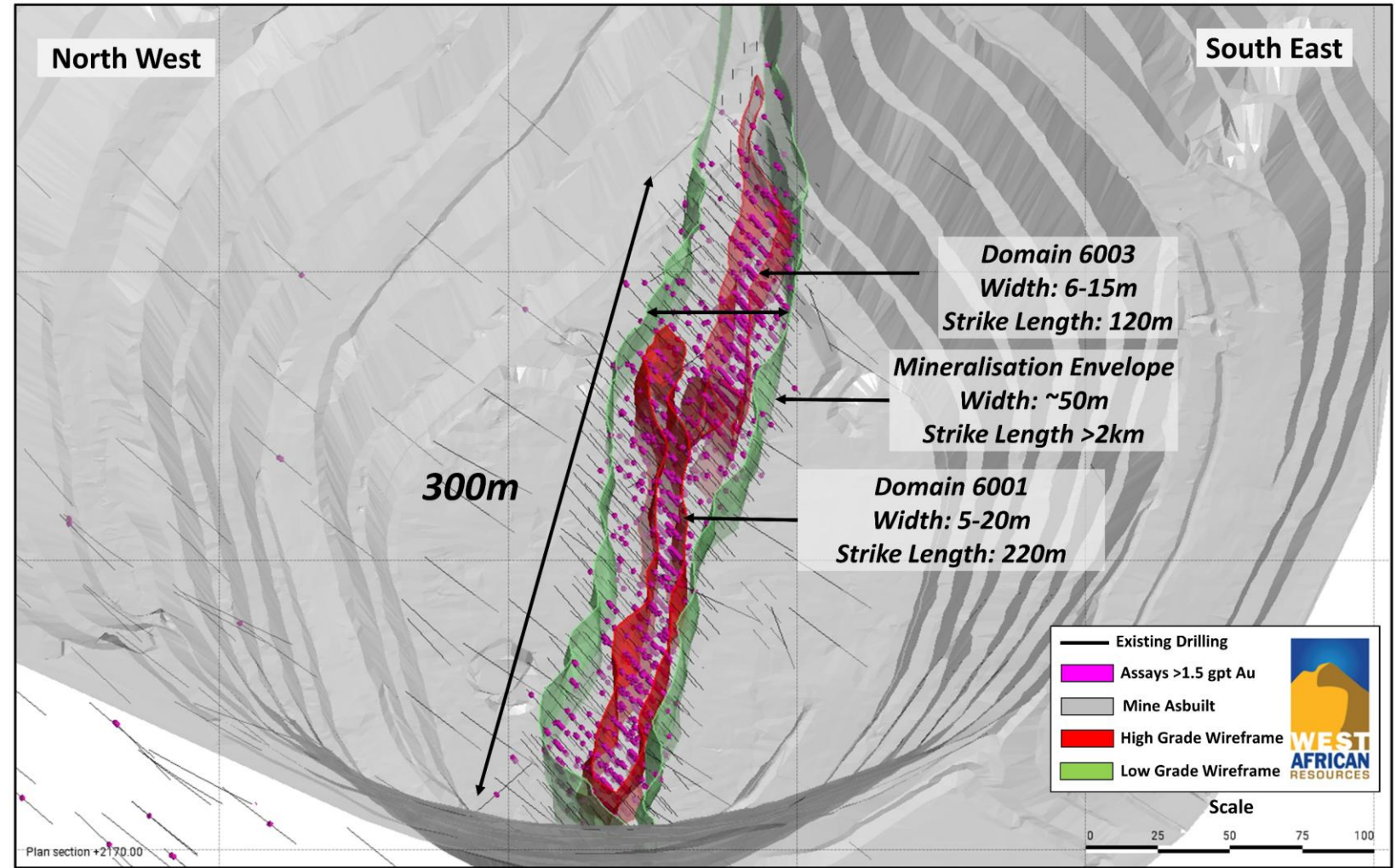
- Grade and tenor of previous drilling confirmed, +1.5 g/t Au mineralisation core below the M5 South open pit
- High-grade shoots remain open at depth at more than 400m below surface
- Maiden underground Mineral Resource Estimate delivers 2.4Mt at 3.8 g/t Au for 289koz gold
- Average annual production post development of 35kozs per annum over 5-year study life
- Development of the M5 South exploration drive has commenced with drilling planned for Q1 2025



NEAR MINE GROWTH

M5 UNDERGROUND POTENTIAL

- Infill drilling complete
- Results include:
 - 20.5m at 4.1 g/t gold and 7m at 5 g/t gold
 - 12.5m at 4.6 g/t gold
 - 4m at 5.3 g/t gold and 9m at 5.7 g/t gold
 - 10m at 3.8 g/t gold and 6m at 2.6 g/t gold
- Historic results by West African include:
 - 11m at 11.45 g/t gold
 - 15m at 11.26 g/t gold
 - 23m at 11.26 g/t gold
 - 8m at 17.5 g/t gold
 - 10m at 4.86 g/t gold

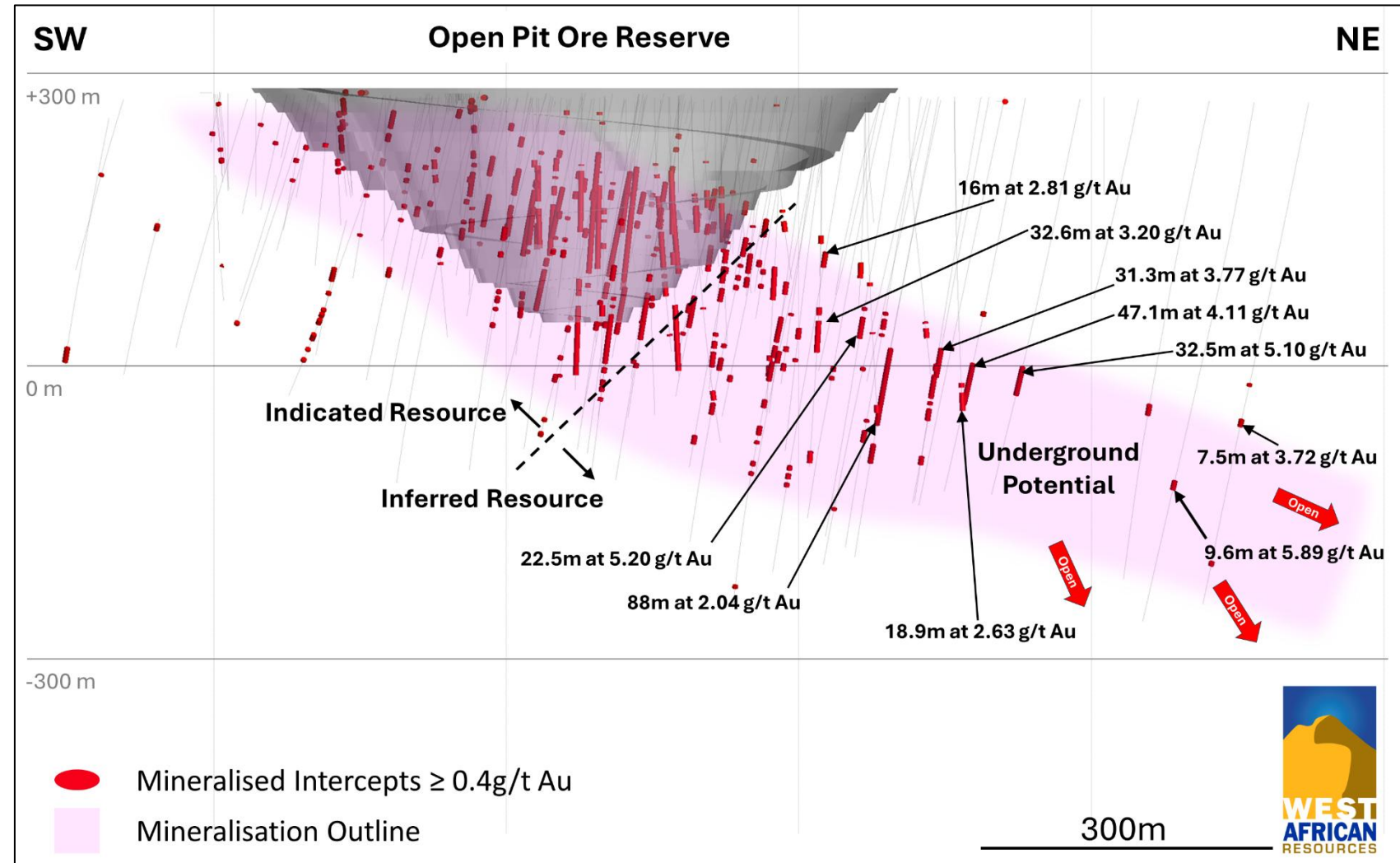


Refer ASX announcements titled “WAF intercepts 25m at 90 g/t gold M1 South M5 deep drilling and underground studies commenced” released 15 December 2022, “20.5m at 4.1 g/t Gold Confirms Underground Potential at M5” released on 23 August 2023 and “WAF Resource, Reserve and 10 year production update 2024” released 28 February 2024.

NEAR MINE GROWTH

TOEGA PROJECT

- Toega located 12.6 km from Sanbrado mill
- Granted mining licence, commences production H2 2025, 7 year open-pit
- Mineral Resource Estimate of 21.7 million tonnes at 1.8 g/t gold for 1,279,000 oz gold
- Ore reserve of 9.5 million tonnes at 1.9 g/t gold for 569,000 oz gold
- Potential for underground extensions
- Drill results including:
 - 47m at 4.11 g/t gold
 - 88m at 2.04 g/t gold including 10m at 4.7 g/t gold
 - 22.5m at 5.2 g/t gold
 - 32.5m at 5.1 g/t gold
- Underground study commenced, targeting completion in Q1 2025



Refer ASX announcement titled "WAF Resource, Reserve and 10 year production update 2024" released 28 February 2024.

KIAKA GOLD PROJECT

20 YEARS AT 234,000 OZ PER YEAR



November 2023

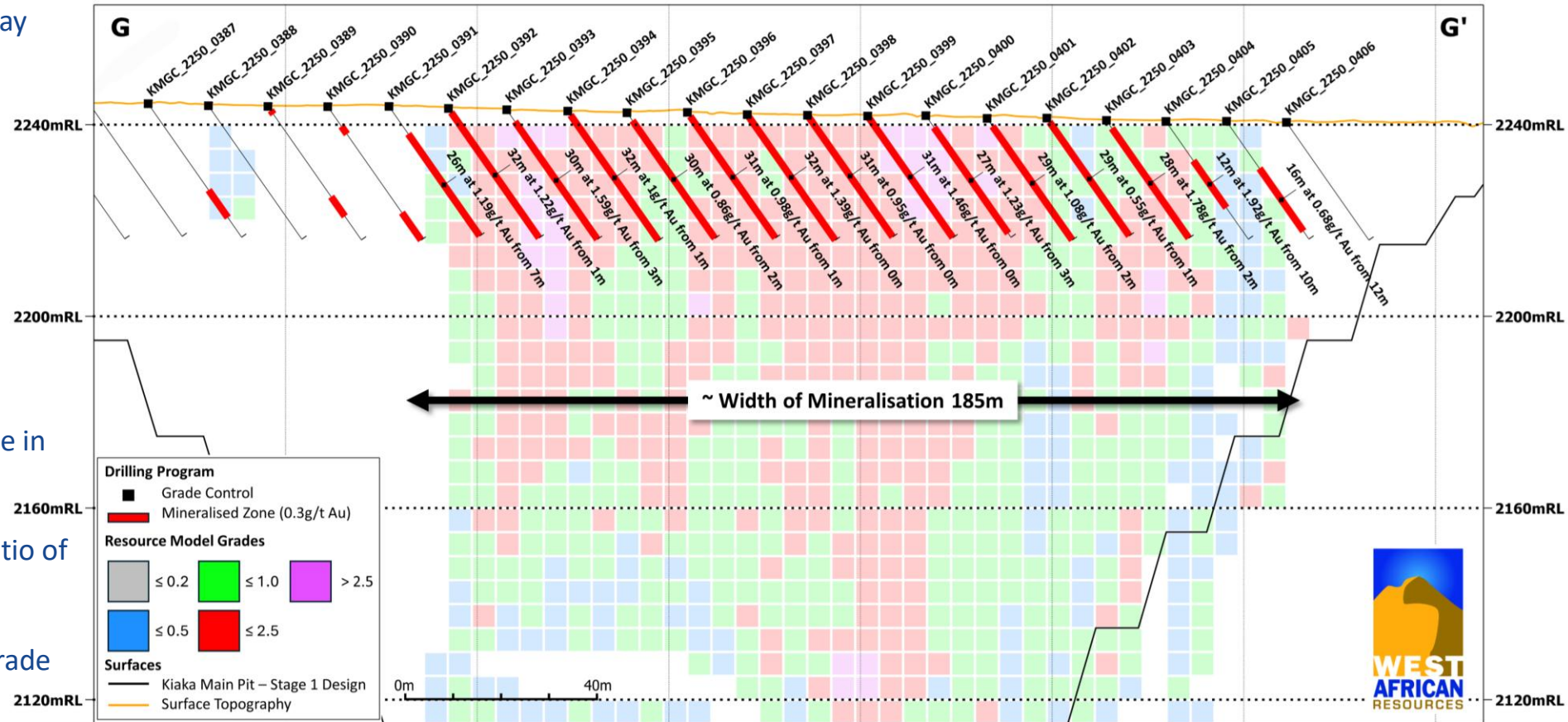


December 2024

KIAKA GOLD PROJECT

THICK ZONES OF GOLD MINERALISATION FROM SURFACE

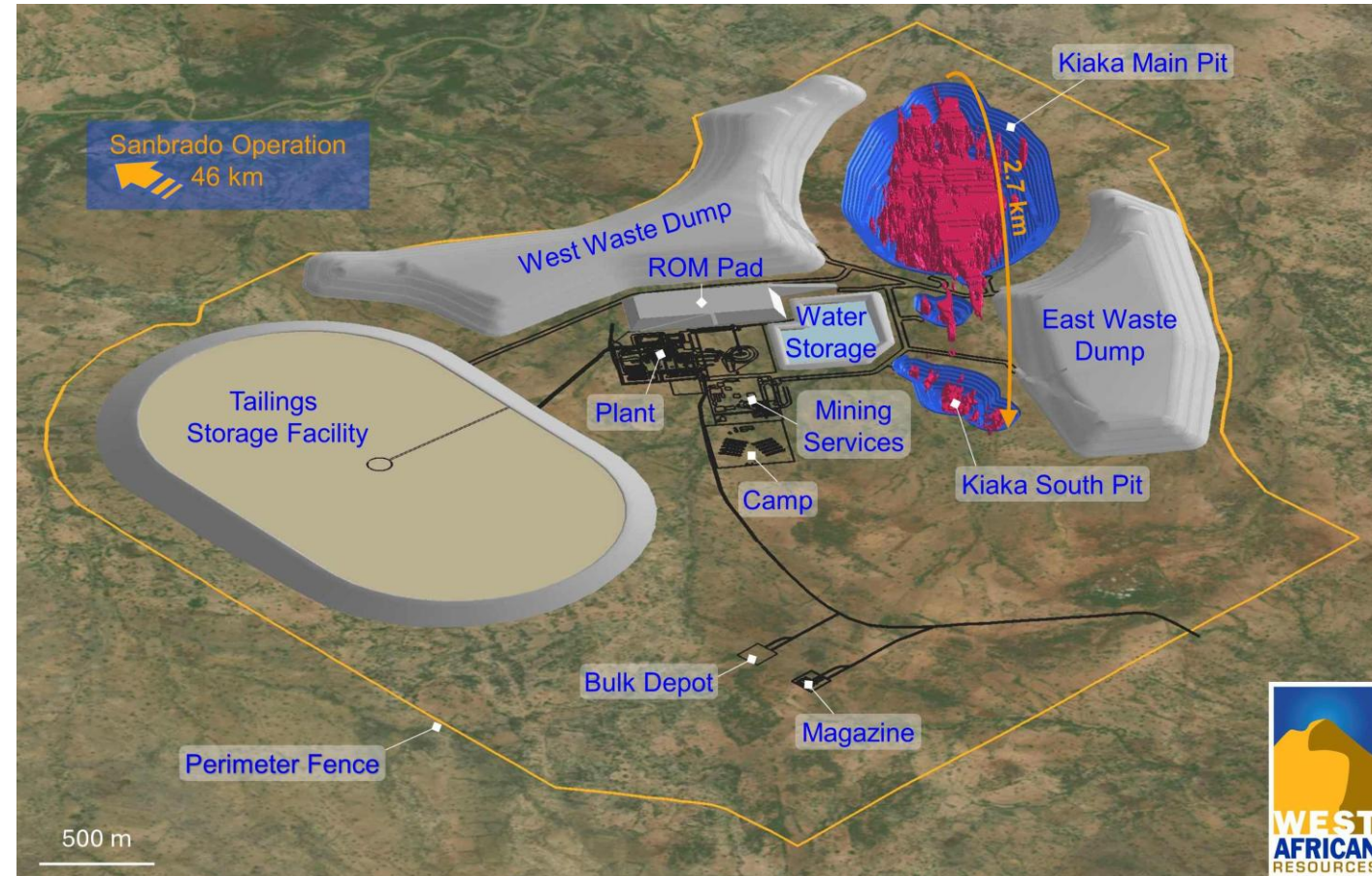
- >50,000m RC grade control underway
- New results include:
 - 30m at 4.1g/t gold
 - 29m at 2.6g/t gold
 - 31m at 2.0g/t gold
 - 32m at 1.9g/t gold
 - 30m at 1.9g/t gold
 - 28m at 2.0g/t gold
- Mineralisation 130m and 185m wide in initial sections (up to 400m wide)
- Kiaka Main Stage 1 open-pit strip ratio of 0.8 : 1 (waste : ore)
- Resource grades within the initial grade control area confirmed



KIAKA GOLD PROJECT

20 YEARS AT 234,000 OZ PER YEAR

Location	South-central Burkina Faso, West Africa
Ownership	WAF 90%; Burkina Faso government 10%
Type	Open-pit, low strip ratio 1.8 : 1 LOM
Resources	285 Mt at 0.9 g/t for 7.9 Moz gold (US\$2000)
Reserves	164 Mt at 0.9 g/t for 4.8 Moz gold (US\$1400)
Mine life	20 years
Processing	Conventional 8.4 Mtpa CIL + gravity
Recovery LOM	90%
Pre-production capex	US\$447million
Pre-production owner-mining	US\$118million
First production	Scheduled for Q3 2025
Production	234,000 oz/yr for 20 years
Power supply	Grid 225Kv (hydro, solar and thermal back-up)
Workforce	>90% Burkinabe including 50% from local region
Tax	27.50%
Gov. participation	10% equity, 5-7% royalty + 1% community fund



There is a low level of geological confidence associated with Inferred Mineral Resources, and there is no certainty that further exploration work will result in the determination of Indicated Mineral Resources or that the production target itself will be realised.

Refer ASX announcements titled “West African Resources to Acquire 6.8Moz Kiaka Gold Project” released 26 October 2021, “WAF Resource, Reserve and 10 year production update 2024” released 28 February 2024 and “Kiaka Feasibility Update Delivers 4.8Moz Gold Ore Reserve 20 Year Mine Life” released on 2 July 2024.

KIAKA GOLD PROJECT

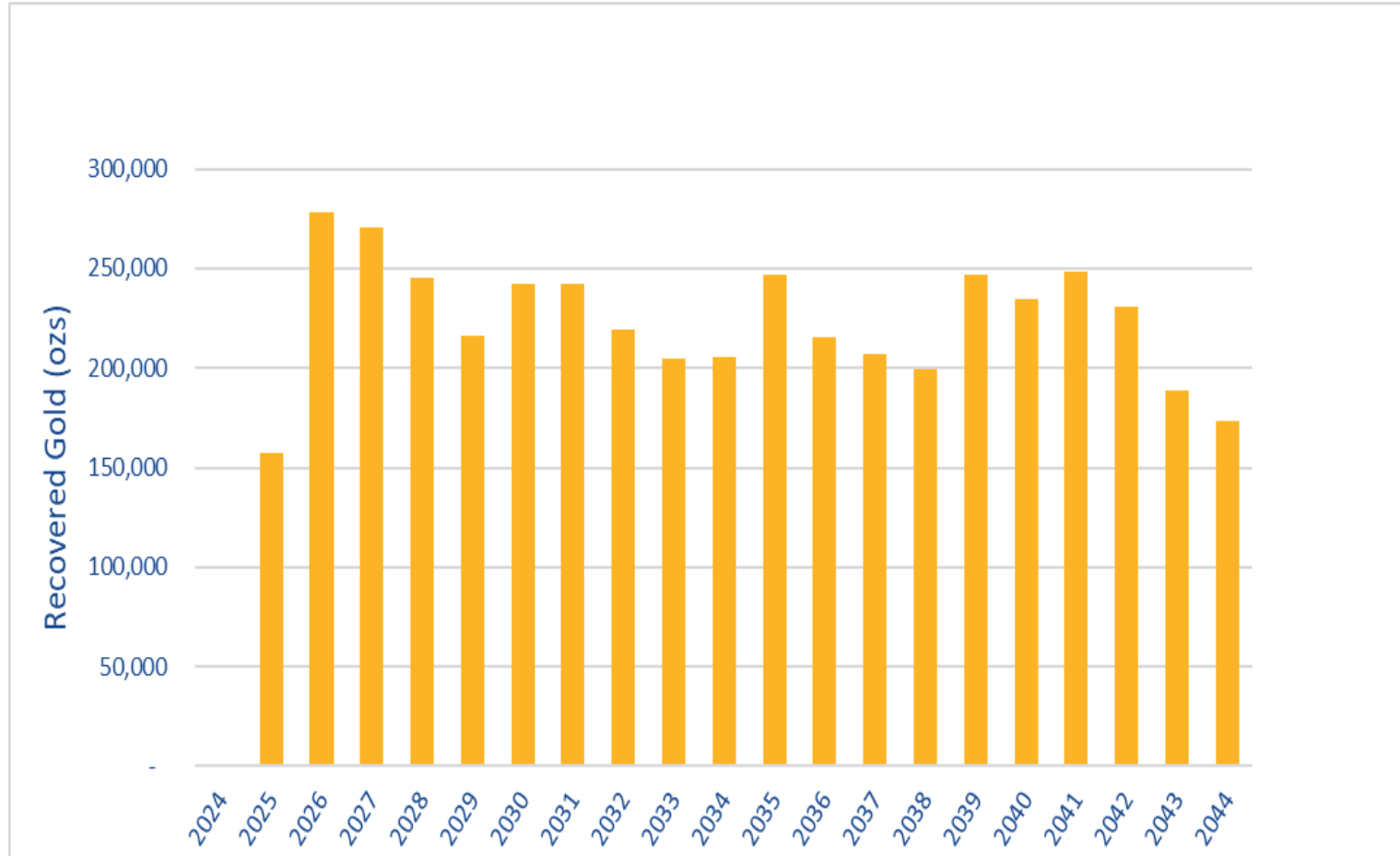
KEY METRICS AT US\$2,100/oz (100% PROJECT BASIS)

Production

- 4.5Moz gold at 90% met. recoveries
- 258,000 ozpa gold production Y1-5
- 234,000 ozpa gold production LOM (20Y)

Financial

- US\$447 million pre-production capital costs
- US\$118 million pre-production owner-mining fleet costs, site establishment and early grade control drilling
- AISC of US\$1,172/oz Y1-5; US\$1,196/oz LOM
- US\$3.4b (A\$5.1b) pre-tax free cashflow at US\$2,100/oz



There is a low level of geological confidence associated with inferred mineral resources, and there is no certainty that further exploration work will result in the determination of indicated mineral resources or that the production target itself will be realised



1. Including pre-production mining and development costs, contingencies, duties and taxes.
2. Assumed USD: AUD FX rate of 0.67.
3. Refer ASX announcements titled "WAF Resource, Reserve and 10 year production update 2024" released 28 February 2024 and "Kiaka Feasibility Update Delivers 4.8Moz Gold Ore Reserve 20 Year Mine Life" released 2 July 2024.

KIAKA GOLD PROJECT

FIRST GOLD ESTIMATED FOR 2025

- Project tracking to schedule and budget, first gold Q3 2025.
- Project currently 84% complete as at end of December 2024.
- WAF team completed WSD, TSF, camp and buildings, workshops, 11kV powerline site reticulation, water intake area, mine services area. Work ongoing includes generator shed, TSF lining and 225kV powerline.
- Lycopodium managing process plant construction, concrete pouring complete, CIL tank installation complete, dry plant structural steel and mechanical equipment installation (SMP) nearing completion, wet plant SMP ongoing and mill installation nearing completion. E&I installation well under way.
- Engineering and procurement services practically complete under Lycopodium EPCM contract.
- All major equipment now on site.
- Project tracking on time and on budget.

	2022			2023				2024				2025			
	Q2	Q3	Q4	Q1	Q2	Q3	Q4	Q1	Q2	Q3	Q4	Q1	Q2	Q3	Q4
Award of EPCM and Order Mill Package															
Early Works															
RAP update															
Commencement of Major Works															
Open Pit Mining Commences															
Commissioning Begins															
First Gold and Ramp Up															

The above timetable is indicative only as to upcoming timing and may be subject to change. Please refer to the 'Important Information' slides for a summary of some of the risks that may cause changes to the upcoming indicative timetable.

KIAKA GOLD PROJECT

20 YEARS AT 234,000 OZ PER YEAR

1.



2.



3.



4.



Kiaka Construction: 1. Mills & CIL, 2. Primary crusher & CV02, 3. TSF and 4. Mine Services Area

ESG

SOCIAL INVESTMENT

Integrating sustainability into our operations with a long-term view; beyond production and closure for a positive mine legacy

- ✓ Significant contributor to Burkina Faso in taxes and royalties +US\$350million since project commencement
- ✓ US\$8 million invested in community projects and donations
- ✓ US\$19 million contributed to FMDL (local development mining fund, 1% of revenue, since start of Sanbrado operations)
- ✓ Released new policies on Human Rights, Biodiversity and Ecosystem Services, and TSF Management
- ✓ Supporting community development through education and health:
 - Built 3 schools, electrified and furnished 5 schools around Sanbrado
 - 1 planned school for Kiaka host communities
 - WAF University Scholarship Program entering third year
 - Trades trainings and certifications for men, women and youth
 - Built health centres, donations of medical supplies and bicycles, and run health education campaigns in partnership with national NGOs

SUSTAINABLE DEVELOPMENT GOALS

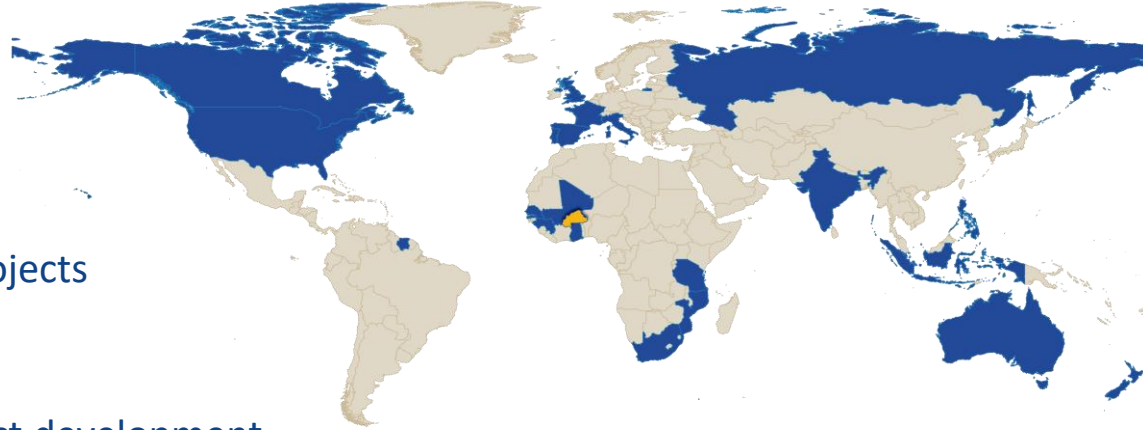


BUILDING A STRONG WORKFORCE

ÉQUIPE WAF



- ✓ Total West African operational employees: 642
 - +90% Burkinabé workers
 - 50% workers from local areas surrounding projects
 - 20% women across all business units
- ✓ Total workforce for operations, exploration and project development, including contractors: 3,365
 - +85% Burkinabé workers
- ✓ WAF senior leadership roles: +30% women
- ✓ Providing training and development opportunities:
 - +70 traineeships conducted in 2024
 - +300 traineeships completed since commencement of operations
 - University scholarship program entering 4th year



School sponsorship program to support learning opportunities

WEST AFRICAN RESOURCES LTD

+420,000OZPA GOLD PRODUCTION BY 2025

TEAM

- Quality board and management team aligned with shareholders
- Building a reputation for consistent and reliable delivery

GOLD EXPOSURE

- 6.4 Moz unhedged gold reserves
- 12.8 Moz unhedged gold resources

ESG

- Social licence to operate through community programs and partnerships
- Environmental and social programs aligned with international standards

GROWTH

- Strong cashflow from unhedged gold production
- +1,300km² of permits covering prospective greenstone belts
- Targeted exploration – creating value through the drill bit
- Forecast +420,000oz p.a. gold production from mid - 2025

There is a low level of geological confidence associated with Inferred Mineral Resources, and there is no certainty that further exploration work will result in the determination of Indicated Mineral Resources or that the production target itself will be realised.

Refer ASX announcements titled "WAF Resource, Reserve and 10 year production update 2024" released 28 February 2024 and "WAF Updates Ore Reserves and 10 Year Production Target" released 2 July 2024.



WEST AFRICAN RESOURCES LTD

WEST AFRICA'S EMERGING MID-TIER GOLD PRODUCER

www.westafricanresources.com

ASX: WAF

WEST AFRICAN RESOURCES LTD

CAPITAL STRUCTURE

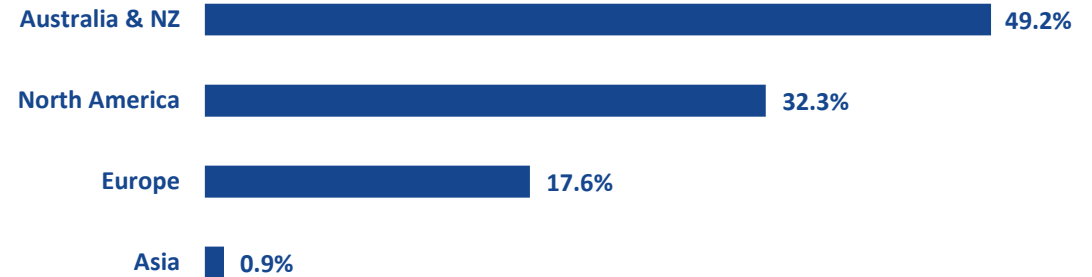
ASX: WAF

Total Ordinary Shares on Issue	1,139,776,844
Performance rights on issue	7,174,246
Top 20 Shareholders ¹	64%
Cash at 31 December 2024	AUD\$392m
Gold at 31 December 2024 ²	AUD\$54m
Kiaka debt facility (fully drawn)	US\$250m
Market Capitalisation (at AUD\$1.63/share)	AUD\$1,858m

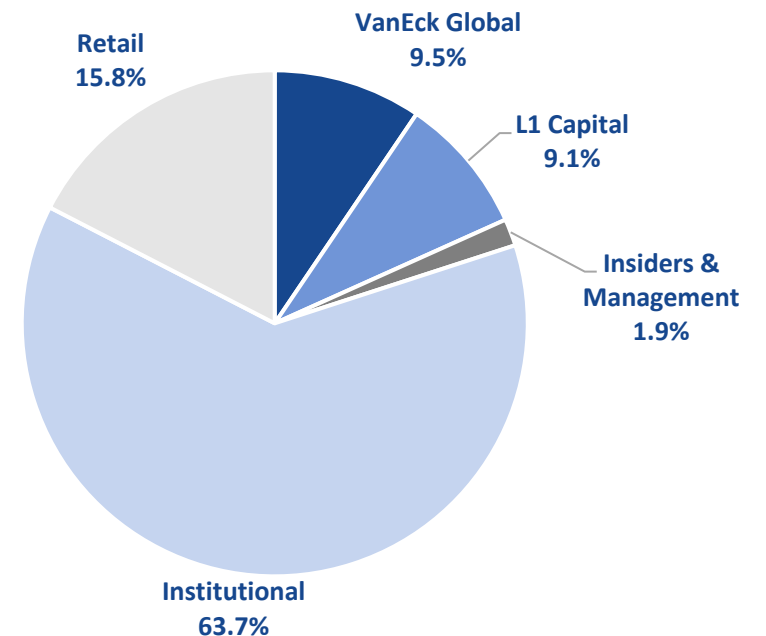
Analyst Coverage³

Euroz Hartleys	Mike Millikan
Macquarie	Andrew Bowler
Cormark	Richard Gray
Barrenjoey	Richard Knights
Argonaut	Patrick Streeter

INVESTOR BY GEOGRAPHIC LOCATION^{1,4}



INVESTOR BY TYPE¹



1. Share holdings as at 31 December 2024
2. Assuming US\$2,611 gold price and USD: AUD FX rate of 0.62
3. Further information at www.westafricanresources.com/investor-centre
4. For 93% of investors

MINERAL RESOURCES

	Cutoff	Measured Resource			Indicated Resource			Inferred Resource			Total Resource		
		Tonnes	Grade	Contained Au	Tonnes	Grade	Contained Au	Tonnes	Grade	Contained A	Tonnes	Grade	Contained Au
		g/t	(000) t	(000) oz	(000) t	g/t	(000) oz	(000) t	g/t	(000) oz	(000) t	g/t	(000) oz
MV3	0.5	-	-	-	2,103	2.2	149	1,728	1.9	103	3,831	2.0	252
M1 South U/G	1.5	1,228	10.1	398	1,893	8.6	521	312	3.4	34	3,434	8.6	953
M1 South U/G Deeps	1.5	-	-	-				1,296	11.9	498	1,296	11.9	498
M5 Open Pit	0.5	2,119	1.1	73	25,633	1.0	831	19,554	1.0	631	47,306	1.0	1,535
M5 Underground	1.5	-	-	-	1,693	3.6	195	694	4.2	94	2,387	3.8	289
Stockpile	0.4	3,135	0.7	73	-	-	-	-	-	-	3,135	0.7	73
Kiaka	0.4	-	-	-	212,469	0.9	5,954	72,378	0.8	1,920	284,847	0.9	7,875
Toega	0.5	-	-	-	13,164	1.7	700	8,491	2.1	579	21,655	1.8	1,279
Total		6,482	2.6	543	256,956	1.0	8,350	104,454	1.1	3,860	367,892	1.1	12,754

Tonnes, grade and contained metal have been rounded to reflect the accuracy of the estimates. Rounding errors may occur.

ORE RESERVES

Cutoff		Proved			Probable			Proved + Probable		
		Tonnes	Grade	Contained Au	Tonnes	Grade	Contained Au	Tonnes	Grade	Contained Au
		(000) t	g/t	(000) oz	(000) t	g/t	(000) oz	(000) t	g/t	(000) oz
M1 South UG	1.5	1,298	7.3	304	1,591	7.7	392	2,889	7.5	696
M5	0.4	1,635	1	55	5,846	1.2	218	7,481	1.1	273
Toega	0.5	0	0	0	9,457	1.9	569	9,457	1.9	569
ROM Stockpile	0.4	3,135	0.7	73	0	0	0	3,135	0.7	73
Kiaka	0.4	0	0	0	164,034	0.9	4,765	164,034	0.9	4,765
Total		6,068	2.2	432	180,928	1.0	5,944	186,996	1.1	6,376

Figures in the table have been rounded. Rounding errors may occur.