



**31 JANUARY 2025**

**ASX ANNOUNCEMENT**

---

**Quarterly Activities Report  
For the Period Ending 31 March 2024**

Ten Sixty Four Limited (Subject to Deed of Company Arrangement) ("Ten Sixty Four" or the "Company"; ASX:X64) provides the Quarterly Activities Report for the period 1 January 2024 to 31 March 2024 as required by ASX Listing Rule 5.1, and which was originally due for lodgement with the ASX by 30 April 2024.

**This announcement has been authorised for release by the Deed Administrator and the Board of Ten Sixty Four Limited.**

Simon Theobald  
Chief Executive Officer  
Ten Sixty Four Limited

**For further information:**

Investors/Media  
Michael Weir  
Sodali & Co  
0402 347 032  
[michael.weir@sodali.com](mailto:michael.weir@sodali.com)

**TEN SIXTY FOUR®**

TEN SIXTY FOUR LIMITED  
ABN: 60 099 377 849 | ASX: X64

📍 Level 1, Suite 3, 1209 Hay St,  
West Perth WA 6005, Australia  
📦 PO BOX 801  
West Perth WA 6872, Australia

☎ +61 8 9474 1330  
✉ [admin@x64.gold](mailto:admin@x64.gold)  
🌐 [www.x64.gold](http://www.x64.gold)

**THE GOLD  
STANDARD**

# Quarterly Activities Report

## For the period ended 31 March 2024



### HIGHLIGHTS:

| CASH BALANCE                    | CO-O PRODUCTION                              | CO-O AISC                                   |
|---------------------------------|--|---|
| Cash at March 2024 Quarter end: | Unhedged gold production for the Quarter of: | All-In-Sustaining-Costs for the Quarter of: |
| <b>US\$5.6M</b>                 | <b>12,817 oz</b>                             | <b>US\$1,850/oz</b>                         |

#### Current Board of Directors:

**Debra Bakker**  
(Non-Executive Chair)

**Jonathan Shellabear**  
(Non-Executive Director)

**John DeCooman**  
(Non-Executive Director)

#### Current Company Secretary:

**Karl Schlöböh**

#### Current Executive Management:

**Simon Theobald** <sup>(1)</sup>  
(Chief Executive Officer)

**Raul C. Villanueva**  
(President, Philippine Operations)

**Nicola Gill**  
(Chief Financial Officer)

**James P. Llorca**  
(General Manager, Geology & Resources)

#### Capital Structure:

Ordinary shares: 227,798,076

#### ASX Listing:

Code: X64

#### Address and Contact Details:

Suite 3, Level 1, 1209 Hay Street  
West Perth, WA 6005  
Australia

PO Box 801  
West Perth, WA 6872  
Australia

Telephone: +61 8 9474 1330

Email: [info@x64.gold](mailto:info@x64.gold)

Website: [www.x64.gold](http://www.x64.gold)

#### Co-O Mine Operations (40% X64)

(Physicals and AISC Reported on a 100% Basis by PMC)

- **Production:** 12,817 ounces at an average head grade of 5.05 g/t gold (December 2023 Qtr: 15,357 ounces at 5.97 g/t gold). The lower produced ounces coincided with the lower tonnage production and the expected drop in grade. Manpower has been realigned and refocused to the lower levels to achieve more consistent production.
- **All-In-Sustaining-Costs ("AISC"):** US\$1,850 per ounce (December 2023 Qtr: US\$1,688 per ounce).
- **Mill Performance:** Gold recovery averaged 95.3% (December 2023 Qtr: 95.9%).
- **Mine Development:** Total underground advance of 2,888 metres of horizontal and vertical development (December 2023 Qtr: 3,095 metres).
- **Tigerway Decline:** Excavation and support are progressing well. This quarter achieved a total advance of 389.92 metres (bringing the project to 71.06% complete).
- **Health and Safety:** There are no health and safety issues or concerns to report.
- **Underground Resource Drilling:**

Total drilling for the Quarter was 7,434 metres (December 2023 Qtr: 6,433 metres).

Key areas and highlights are as follows:

- Reserve drilling totalled 1,648 metres from 5 drillholes;
- Resource drilling totalled 5,786 metres from 9 drillholes; and
- Significant high-grade results returned from the drilling include **2.30 metre @ 99.14 g/t gold; 1.00 metres @ 23.20 g/t; 1.00 metres @ 13.60 g/t gold; 0.75 metres @ 17.37 g/t gold; 0.25 metres @ 73.00 g/t gold.**

#### Co-O Near-mine Exploration:

- **Royal Crowne Vein:** The RCV project has progressed with the excavation of a shaft sinking initiative. As of this quarter, the shaft advanced 22 metres reaching -120 metres below surface (122.6 mRL). At -92.8 meters a level crosscut was established towards the first drill caddy position.

#### Drummond Basin Exploration (100% X64)

- **Exploration, Queensland (100% owned):**
  - **CQ22 Pty Ltd:** Due to corporate constraints (X64) all but essential regulatory work to keep the tenements active has been temporarily suspended and the operations placed under care and maintenance.

#### Corporate and Financial

- Total cash and cash equivalent on metal account decreased to US\$5.6 million at the Quarter end (December 2023 Qtr: US\$8.5 million).
- Restructuring Framework Agreement executed represents a significant step towards completing a reset of the commercial arrangements between the Company, its subsidiaries and associates, resolution of historical issues and effectuation of the DOCA.

#### Notes:

1. Appointment announced 15 January 2024.

## Co-O Mine (X64 40%)

The Company holds a 40% indirect equity interest in the Philippine entities that operate the Co-O Mine and/or are undertaking related exploration projects, via its direct shareholding in Philsaga Management and Holdings Inc ("PMHI") with Philippine local Mr Raul Villanueva holding (either directly or indirectly) the majority interest of 60% in PMHI. PMHI holds 100% of the issued and outstanding capital stock of Philsaga Development Corporation ("PDC"), who holds 100% of the issued and outstanding capital stock of Philsaga Mining Corporation Inc ("PMC"). As a 40% shareholder at the PMHI level, the Company is afforded voting and economic rights in respect of PMHI under Philippine law and PMHI's constitutive documents.

The operator of the Co-O Mine, Philsaga Mining Corporation Inc ("PMC"), has advised the following physical and costs for the mine on a 100% basis.

### Production (100% Basis – X64 has a 40% interest)

The production statistics for the March 2024 quarter and comparatives for the previous four quarters are summarised in Table I below.

**Table I: Production Statistics (100% Basis – X64 has a 40% interest)**

| DESCRIPTION                 | UNIT    | MAR 2023<br>QUARTER | JUN 2023<br>QUARTER | SEP 2023<br>QUARTER | DEC 2023<br>QUARTER | MAR 2024<br>QUARTER |
|-----------------------------|---------|---------------------|---------------------|---------------------|---------------------|---------------------|
| Ore Mined                   | WMT     | 131,918             | 127,217             | 115,015             | 92,293              | 91,287              |
| Ore Milled                  | DMT     | 117,033             | 114,266             | 103,462             | 83,203              | 82,258              |
| Head Grade                  | g/t     | 5.33                | 5.44                | 5.46                | 5.97                | 5.05                |
| Recovery                    | %       | 95.0                | 95.2                | 95.5                | 95.9                | 95.9                |
| Gold Produced               | ounces  | 19,124              | 18,925              | 17,749              | 15,357              | 12,817              |
| Gold Sold                   | ounces  | 6,060               | 28,348              | 24,573              | 18,770              | 11,359              |
| Underground Development     | metres  | 4,168               | 4,906               | 4,263               | 3,095               | 2,888               |
| All-In-Sustaining-Costs     | US\$/oz | 1,604               | 1,737               | 1,647               | 1,688               | 1,850               |
| Average Gold Price Received | US\$/oz | 1,914               | 1,960               | 1,935               | 1,976               | \$2,077             |

Co-O mine produced 12,817 ounces of gold from 82,258 tonnes of ore at an average grade of 5.05 g/t gold, a decrease in ounces produced of 16% from the previous Quarter. The decrease in produced ounces aligned with both reduced tonnage production and an anticipated decline in grade. The decrease in tonnage directly resulted from inconsistent UG workforce turnout, while the lower grade was attributed to the depletion of higher-grade blocks mined during the initial two quarters. Manpower has been realigned and refocused to the lower levels to achieve more consistent production.

### Processing Plant (100% Basis – X64 has an 80% interest)

Ore was toll-treated by Mindanao Mineral Processing and Refining Corporation ("MMPRC"), a subsidiary company that holds an 80% direct interest. Plant throughput for the Quarter was 82,258 dry tonnes at a 5.05 g/t gold grade. Throughput tonnage decreased slightly by 1% compared to the previous Quarter (December 2023 Qtr: 83,203 dry tonnes at 5.97 g/t gold), while the grade decreased by 15%.

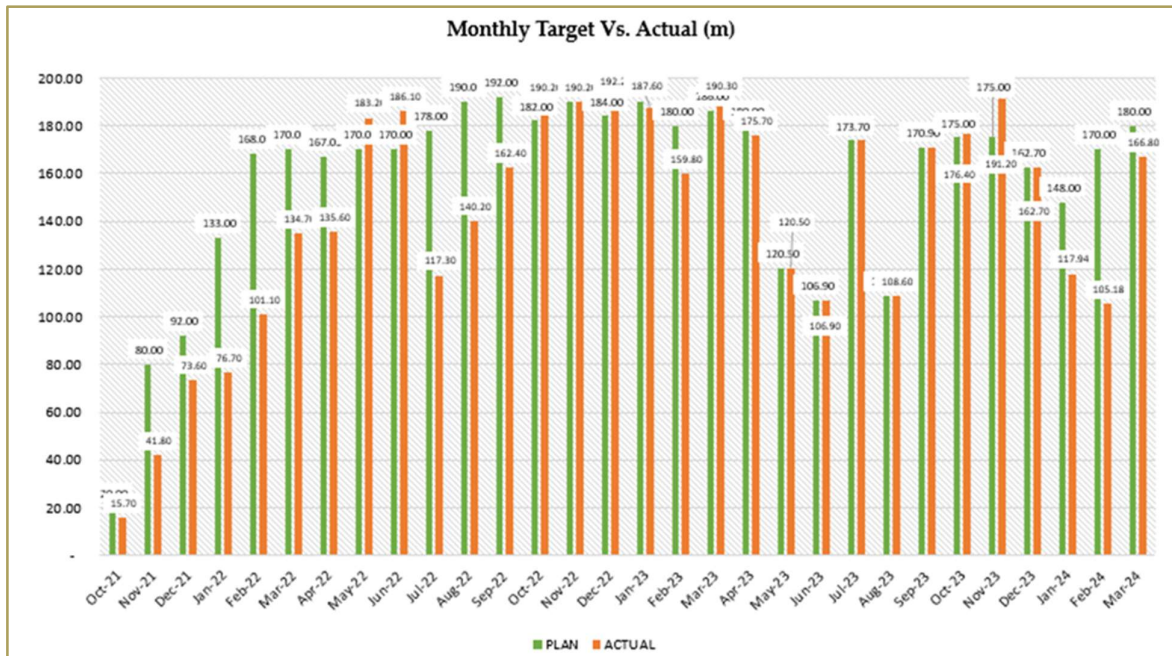
Consistent high gold recoveries continued to be achieved at +95% in the Quarter.

### Tigerway Decline Project Update (PMC)

Excavation and support activities achieved a quarterly progress of 389.92 metres (December 2023 Qtr: 530.3 m), reaching 71.06% completion overall. The monthly Tigerway development meterage is presented in Graph 1.

The Tigerway Decline Project has incurred a project-to-date expenditure of US\$41.8 million as at 31 March 2024.

The total construction cost for Tigerway and completion timing are under review.



Graph 1: Tigerway monthly meterage advance to 31 March 2024.

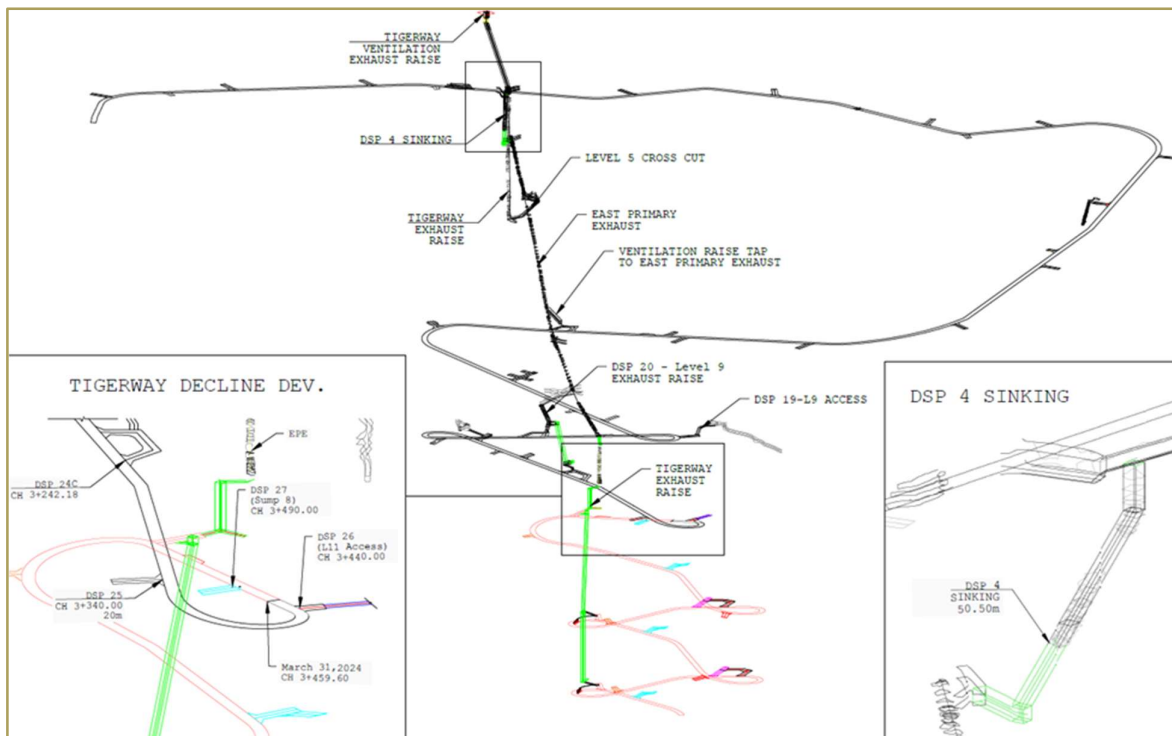


Figure 1: Tigerway Excavation Progress map as of March 2024.

(NOTE: black lines are actual excavation, red lines are planned, and the green line is the completed exhaust ventilation raise that will connect to L-09)

## Health, Safety and Environment (PMC)

No environmental or significant safety issues were reported for the March 2024 quarter.

However, the continuing effect of a number of natural disasters in the region did impact operations and production during the quarter.

Co-O continues to maintain a key focus on the environment and safety to protect its employees and contractors.

## Underground Resource Drilling (PMC)

Drilling activity for the March 2024 quarter increased by 16% compared to the previous Quarter (7,434 metres vs. 6,433 metres for December 2023). The focus was on developing Ore Reserves at Level 12 with 1,648 metres completed in 5 drillholes. Resource delineation drilling targeted Level 10, achieving 5,786 metres drilled across 9 holes.

Significant high-grade results returned from the drilling include 2.30 metres @ 99.14 g/t gold; 1.00 metres @ 23.20 g/t; 1.00 metres @ 13.60 g/t gold; 0.75 metres @ 17.37 g/t gold; 0.25 metres @ 73.00 g/t gold.

The underground drilling campaign targeting resource definition below Level 12 (as shown in Figure 2) has yielded positive results. This program aims to increase and upgrade the current Mineral Resource by exploring the depth and strike extensions of the mineralised vein system between Levels 10 and 16 (from -300 metres to -600 metres relative level). Significant results obtained during the Quarter are reported in Table II, with accumulations (grade x metres) in the far-right column. Relative positions are shown in the longitudinal sections (Figure 2).

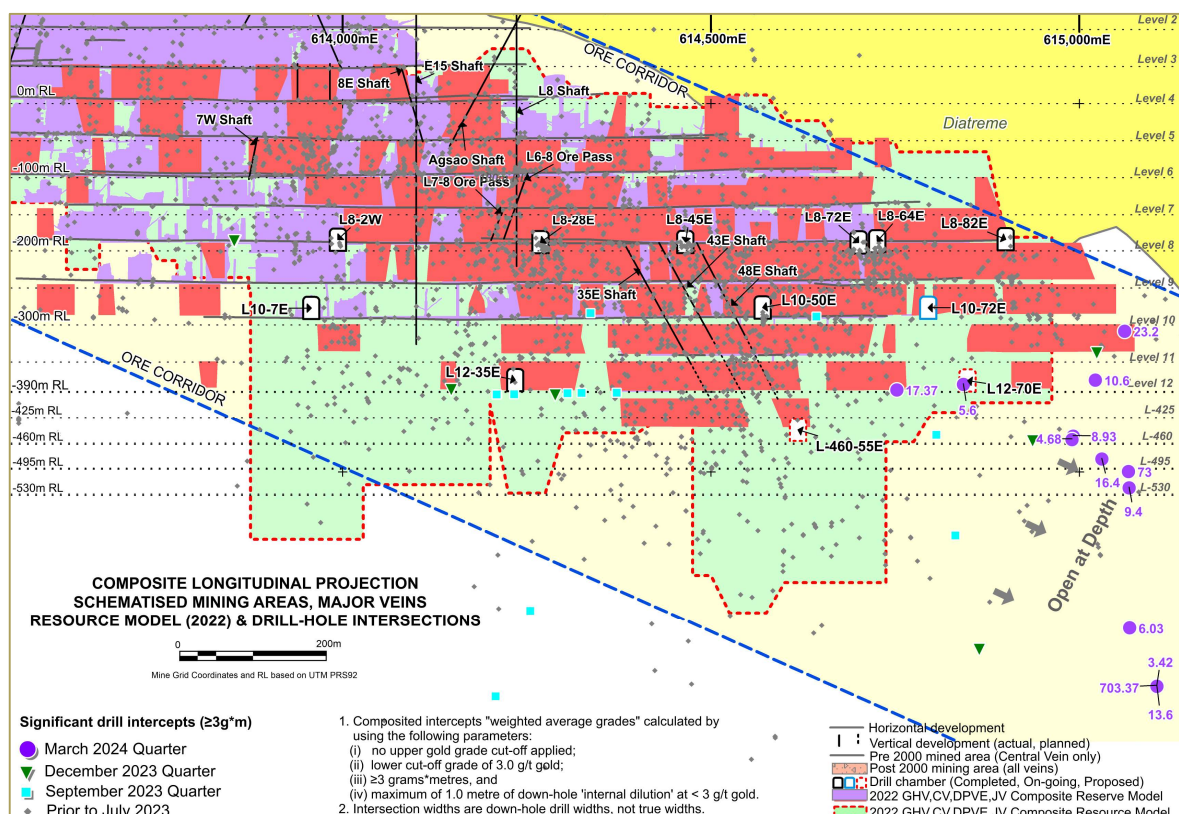
**Table II: Co-O Mine underground drill hole results from ≥ 3 gram-metre/tonne gold (as of 31 December 2023)** (refer to Appendix A for JORC Code, 2012 Edition - Table 1 Report)

| Hole Number                            | East   | North  | RL   | Depth (metres) | Azim (°) | Dip (°) | From (metres) | To (metres) | Width (metres) | Gold (g/t) | Accumulations (gm*m) |
|--|--------|--------|------|----------------|----------|---------|---------------|-------------|----------------|------------|----------------------|
| <b>UNDERGROUND DRILLING - LEVEL 10</b> |        |        |      |                |          |         |               |             |                |            |                      |
| L10-100E-009                           | 615060 | 913246 | -285 | 750.1          | 176      | -44     | 305.45        | 305.70      | 0.25           | 73.00      | 18.25                |
|  |        |        |      |                |          |         | 337.20        | 337.60      | 0.40           | 9.40       | 3.76                 |
|  |        |        |      |                |          |         | 627.40        | 627.90      | 0.50           | 6.03       | 3.02                 |
| L10-100E-010                           | 615059 | 913246 | -285 | 750.10         | 205      | -47     | 119.75        | 120.20      | 0.45           | 10.60      | 4.77                 |
|  |        |        |      |                |          |         | 221.75        | 222.25      | 0.50           | 8.93       | 4.46                 |
|  |        |        |      |                |          |         | 227.70        | 228.70      | 1.00           | 4.68       | 4.68                 |
| L10-100E-011                           | 615060 | 913246 | -285 | 750.10         | 172      | -53     | 26.90         | 27.90       | 1.00           | 23.20      | 23.20                |
|  |        |        |      |                |          |         | 630.35        | 632.65      | 2.30           | 99.14      | 228.02               |
|  |        |        |      |                |          |         | including     |             | 1.00           | 3.42       | 3.42                 |
|  |        |        |      |                |          |         |               |             | 0.30           | 703.37     | 211.01               |
|  |        |        |      |                |          |         |               |             | 1.00           | 13.60      | 13.60                |
| L10-100E-012                           | 615060 | 913248 | -285 | 611.10         | 187      | -43     | 279.35        | 279.65      | 0.30           | 16.40      | 4.92                 |
| <b>UNDERGROUND DRILLING - LEVEL 12</b> |        |        |      |                |          |         |               |             |                |            |                      |
| L12-73E-005                            | 614693 | 912821 | -389 | 450.10         | 35       | 0       | 98.45         | 99.20       | 0.75           | 17.37      | 13.03                |
|  |        |        |      |                |          |         | 243.00        | 244.00      | 1.00           | 5.60       | 5.60                 |

**Notes:**

- Composited intercepts' "Accumulations" are calculated by using the following parameters:
  - accumulations = grade x width;
  - no upper gold grade cut-off applied, and
  - lower cut-off grade of 3.0 g/t gold.
- Widths and depths are downhole measurements, not true widths.
- Philsaga Mining Corporation's in-house Laboratory carries out the analysis; inter-laboratory check assays are regularly carried out by an independent accredited commercial laboratory (Intertek Philippines, Manila) during the Quarter.
- Grid coordinates are rounded and based on the Co-O Mine Grid. RL is elevation, rounded in metres relative to Mine Datum.





**Figure 2: Co-O Mine Longitudinal Projection showing composited mining depletion, vertical development, Mineral Resource limits and significant drill intercept locations (including previously reported)**

## Royal Crowne Vein Project (PMC) (MPSA 262-2008-XIII PARCEL 2)

The Royal Crown Vein ("RCV") Indicated and Inferred Mineral Resources Estimate at 441,000 tonnes at 6.77 g/t Au, equivalent to 96,000 oz of contained gold (*ASX announcement 22 November 2022 for full details*). Opportunities exist to expand the mineral endowment through near-mine underground exploration activities.

Vertical shaft excavation progressed 22 meters this quarter, reaching a depth of 120 meters below surface (122.6 mRL). This advancement positions us for the creation of crosscuts leading to drilling cuddies. To facilitate this, shaft sinking has been paused to establish Level 1 (at -92.8 mRL). A crosscut advancing 6 m in March, is being excavated at this level to reach the first drilling cuddy location. This strategic shift allows for efficient access to the drilling areas and provides a valuable underground vantage point for exploration activities.

## Co-O Mine Financials (Reported by PMC on a 100% Basis – X64 has a 40% interest)

During the March 2024 Quarter, in addition to general mine operating expenditure PMC the operator of the Co-O Mine incurred expenses of:

- US\$0.8 million on exploration expenditure (inclusive of underground exploration) (December 2023 Qtr: US\$0.6 million);
- US\$1.8 million on capital works and associated sustaining capital at the mine (December 2023 Qtr: US\$1.6 million);
- US\$3.4 million on the Tigerway Decline Project (December 2023 Qtr: US\$3.4 million); and
- US\$0.7 million on overheads (December 2023 Qtr: US\$0.9 million).

## Co-O Mill (80% X64)

The Company holds an 80% controlling interest in the Co-O Mill through a subsidiary of the Company, Mindanao Mineral Processing and Refining Corporation ("MMPRC") the following physical and costs for the mill are on a 100% basis.

During the March Quarter MMPRC toll treated 82,258 dry tonnes (December 2023 Qtr: 83,203 dry tonnes) of ore from the Co-O Mine.

### Health, Safety and Environment (MMPRC)

No environmental issues were reported for the quarter.

MMPRC maintains a key focus on safety to protect its employees and contractors.

### Co-O Mill Financials (100% Basis – X64 has an 80% interest)

During the March 2024 Quarter, MMPRC the operator of the Co-O Mill incurred expenses of:

- US\$0.1 million on capital works and associated sustaining capital at the mill (Dec 2023 Qtr: US\$0.2 million); and
- Operating costs and overheads of US\$0.9 million (Dec 2023 Qtr: US\$0.9 million).

## Drummond Basin Exploration (100% X64) (Queensland, Australia)

CQ22 Pty Ltd, a wholly-owned subsidiary of X64, holds expansive tenements spanning approximately 5,155 km<sup>2</sup> in the Drummond Basin, Queensland. These tenements are fully compliant with all regulatory requirements, and the 26 Exploration Permits for Minerals (EPMs) are current and maintain good statutory standing.

Financial Expenditure Report: For the March 2024 Quarter, investment in the Drummond Basin Exploration project amounted to US\$0.1 million similar to that incurred in the December 2023 quarter.

Operational Update: Field exploration activities were temporarily halted due to the Company being in administration. We continue critical regulatory work to maintain our exploration tenements. To ensure compliance, we have retained the services of these two senior geologists on a part-time basis for tenement upkeep.

### Health, Safety and Environment

There were no health, safety and environmental issues reported for the March 2024 Quarter.

## Corporate

### Corporate – Financials

At 31 March 2024 the Company directly held available cash of US\$2.7 million (December 2023 Qtr: US\$2.4 million). On a consolidated basis, with the addition of controlled subsidiaries, this amounted to US\$5.6 million (December 2023 Qtr: US\$8.5 million). For the avoidance of doubt, this excludes any cash and gold inventory held by the PMHI Group of companies (including PMC), which are not part of the X64 consolidated group.

Corporate overheads of US\$1.5 million (December 2023 Qtr: US\$2.0 million) were incurred during the March 2024 Quarter.

### Suspension of Trading

On 28 February 2023 the Company requested a voluntary suspension of its securities in accordance with ASX Listing Rule 17.2. The suspension remains in place.

## **Appointment of CEO**

On 15 January 2024 the Company announced the appointment of Simon Theobald as the Company's Chief Executive Officer, pursuant to a Consultancy Agreement for Executive Services. Details of the appointment were provided in the announcement.

## **Legal Settlement**

On 24 January 2024 the Company announced that it had reached a resolution of claims made by Mr Welker, a former Managing Director of the Company, alleging that his employment was wrongfully terminated. The Company has acknowledged that no grounds existed justifying the termination of his employment on 5 July 2022 as announced to the ASX, and that his resignation was valid. The settlement amount paid by the Company was considered immaterial.

## **Restructuring Framework Agreement**

On 20 March 2024 the Company announced that it had executed a restructuring framework agreement ("Restructuring Framework Agreement") which sets out certain key terms and processes agreed for achieving a restructuring of certain inter-company commercial, operational and financing arrangements between the Company, Komo Diti Traders Ltd ("Komo Diti"), MMPRC and PMC (referred to as the "Corporate Parties").

The execution of the Restructuring Framework Agreement represents a significant reset of the commercial arrangements between the Company, its subsidiaries and associates and a milestone achievement towards effectuation of the DOCA and resolution of historical issues.

## **DOCA Status**

During the quarter the Company and Deed Administrator continued working towards satisfying the conditions precedent to which the Deed of Company Arrangement ("DOCA") is subject. This included execution of the Restructuring Framework Agreement noted above.



## JORC Code 2012 Compliance - Consent of Competent Person

Information in this report relating to Exploration Results has been directed and reviewed by Mr James P Llorca and is based on information compiled by Philsaga Mining Corporation's and CQ22 Pty Ltd technical personnel. Mr Llorca is a Fellow of the Australian Institute of Geoscientists (AIG), a Fellow of the Australasian Institute of Mining and Metallurgy (AusIMM) and a Chartered Professional in Geology of the AusIMM.

Mr Llorca is General Manager, Geology and Resources, a full-time employee of Ten Sixty Four Ltd, and is entitled to participate in the Company's incentive plans, details of which are included in Ten Sixty Four Ltd 2022 Remuneration Report. Mr Llorca has sufficient experience which is relevant to the styles of mineralisation and type of deposits under consideration and to the activities for which he is undertaking to qualify as a "Competent Person" as defined in the 2012 Edition of the "Australasian Code for Reporting of Exploration Results, Mineral Resources and Ore Reserves (JORC)." Mr Llorca consents to the inclusion in the report of the matters based on his information in the form and context in which it appears.

Except where explicitly stated, this Quarterly Report contains references to prior Exploration Targets and Exploration Results, all of which have been cross-referenced to previous ASX announcements by the Company. The Company confirms that it is unaware of any new information or data that materially affects the information included in the relevant ASX announcements.

### DISCLAIMER

This report contains certain forward-looking statements. The words 'anticipate', 'believe', 'expect', 'project', 'forecast', 'estimate', 'likely', 'intend', 'should', 'could', 'may', 'target', 'plan' and other similar expressions are intended to identify forward-looking statements. Indications of, and guidance on, future earnings and financial position and performance are also forward-looking statements.

Such forward-looking statements are not guarantees of future performance and involve known and unknown risks, uncertainties and other factors, many of which are beyond the control of Ten Sixty Four, and its officers, employees, agents and associates, that may cause actual results to differ materially from those expressed or implied in such statements.

Actual results, performance or outcomes may differ materially from any projections and forward-looking statements and the assumptions on which those assumptions are based.

You should not place undue reliance on forward-looking statements, and neither Ten Sixty Four nor any of its directors, employees, servants or agents assume any obligation to update such information.

# APPENDIX A

## Co-O Mine - JORC Code, 2012 Edition - Table 1 report

### Section 1. Sampling Techniques and Data

(Criteria in this section apply to all succeeding sections)

| Criteria                     | JORC Code explanation   | Commentary   |
|------------------------------|---|--|
| <b>Sampling techniques</b>   | <ul style="list-style-type: none"> <li><i>Nature and quality of sampling (eg cut channels, random chips, or specific specialised industry standard measurement tools appropriate to the minerals under investigation, such as down hole gamma sondes, or handled XRF instruments, etc). These examples should not be taken as limiting the broad meaning of sampling.</i></li> <li><i>Include reference to measures taken to ensure sample representivity and the appropriate calibration of any measurement tools or systems used.</i></li> <li><i>Aspects of the determination of mineralisation that are Material to the Public Report. In cases where 'industry standard' work has been done this would be relatively simple (eg 'reverse circulation drilling was used to obtain 1m samples from which 3kg was pulverised to produce a 30g charge for fire assay'). In other cases more explanation may be required, such as where there is coarse gold that has inherent sampling problems. Unusual commodities or mineralisation types (eg submarine nodules) may warrant disclosure of detailed information.</i></li> </ul> | <ul style="list-style-type: none"> <li>Diamond (DD) core and stope face channel samples are the two main sample types. Diamond (DD) core samples: Half core samples for DD core sizes, NQ and HQ.</li> <li>Stope and Development samples: Stope face channel samples are taken over stope widths of 1.5 to 3m, for both waste and mineralised material.</li> <li>DD drilling is carried out according to industry standards to obtain drill core samples, which are split longitudinally in half along the core axis using a diamond saw. Half core samples are then taken at 1m intervals or at lithological boundary contacts (if &gt;20cm), whichever is least. The sample is crushed with a 1kg split taken for pulverisation to obtain four (4) 250g pulp samples. A 30g charge is taken from one of the 250g pulp packets for fire assay gold analysis. The remaining pulp samples are retained in a secure storage for future reference.</li> </ul>   |
| <b>Drilling techniques</b>   | <ul style="list-style-type: none"> <li><i>Drill type (eg core, reverse circulation, open-hole hammer, rotary air blast, auger, Bangka, sonic, etc) and details (eg core diameter, triple or standard tube, depth of diamond tails, face-sampling bit or other type, whether core is oriented and if so, by what method, etc).</i></li> </ul>  | <ul style="list-style-type: none"> <li>For underground drilling, larger rigs (i.e. LM-55 and Diamec U6, U6DH-APC), collar holes using HQ/HQ3 drill bits (core Ø 61mm/63mm) until ground conditions require casing off, then reduce to NQ/NQ3 drill bits (core Ø 45mm/47mm).</li> <li>For the smaller portable rigs (GD-55 and modified LM-55), drill holes are collared using HQ/HQ3 drill bits (core Ø 61mm/63mm) until ground conditions require casing off, then reduce to NQ/NQ3 drill bits (core Ø 45mm/47mm).</li> <li>Previous small rigs were Ingetrol and XU-200, with the holes collared using TT46 or LTK60 drill bits (core diameters 35mm and 44mm, respectively) and continued coring to target depth.</li> <li>Drill core orientation was done using the Reflex EZ-Mark™ (mechanical type front-end orientation tool) but was terminated in 2016.</li> <li>Down-hole surveys were measured using Reflex EZ-Shot (magnetic single shot) until 2016 and was replaced by Devico DeviFlex (non-magnetic multi-shot).</li> <li>Surface holes, drillholes are collared with PQ3 drill bits (core Ø 83mm) until competent bedrock. Depending on ground conditions, the holes are then completed using either HQ3 or NQ3 drill bits.</li> </ul> |
| <b>Drill sample recovery</b> | <ul style="list-style-type: none"> <li><i>Method of recording and assessing core and chip sample recoveries and results assessed.</i></li> <li><i>Measure taken to maximise sample recovery and ensure representative nature of the samples.</i></li> <li><i>Whether a relationship exists between sample recovery and grade and whether sample bias may have occurred due to preferential loss/gain of fine/coarse material.</i></li> </ul>  | <ul style="list-style-type: none"> <li>For each core run, the total core length is measured, and the recovery is calculated against the drilled length. Recovery averaged better than 95%, which is considered acceptable by industry standards.</li> <li>Sample recovery is maximised by monitoring and adjusting drilling parameters (e.g. mud mix, drill bit series, rotation speed). Core sample integrity is maintained using triple-tube coring system.</li> <li>No known relationship has been observed to date between sample recovery and grade. Core recovery is high being &gt;95%. No sampling bias has been observed.</li> </ul>  |
| <b>Logging</b>               | <ul style="list-style-type: none"> <li><i>Whether core and chip samples have been geologically and geotechnically logged to a level of detail to support appropriate Mineral Resource estimation, mining studies and metallurgical studies.</i></li> <li><i>Whether logging is qualitative or quantitative in nature. Core (or costean, channel, etc) photography.</i></li> <li><i>The total length and percentage of the relevant intersections logged.</i></li> </ul>   | <ul style="list-style-type: none"> <li>Core samples have been logged geologically and geotechnically to a level of sufficient detail to support appropriate mineral resource estimation, mining and metallurgical studies. Lithology, mineralisation, alteration, oxidation, sulphide mineralogy, RQD, fracture density, core recovery is recorded by geologists, then entered into a digital database and validated.</li> <li>Qualitative logging is carried out on all drill core. More detailed quantitative logging is carried out for all zones of interest, such as in mineralised zones. Since July 2010, all drill core has been</li> </ul>  |

| Criteria  | JORC Code explanation  | Commentary  |
|---|--|---|
|   |  | photographed. The drill core obtained prior to July 2010 has a limited photographic record.   |
| <b>Sub-sampling techniques and sample preparation</b> | <ul style="list-style-type: none"> <li><i>If core, whether cut or sawn and whether Quarter, half or call core taken.</i></li> <li><i>If non-core, whether riffled, tube sampled, rotary split, etc and whether sampled wet or dry.</i></li> <li><i>For all sample types, the nature, quality and appropriateness of the sample preparation technique.</i></li> <li><i>Quality control procedures adopted for all sub-sampling stages to maximise representivity of samples.</i></li> <li><i>Measures taken to ensure that the sampling is representative of the in situ material collected including for instance results for field duplicate/second-half sampling.</i></li> <li><i>Whether sample sizes are appropriate to the grain size of the material being sampled.</i></li> </ul> | <ul style="list-style-type: none"> <li>Except for TT46 drill core, all drill core is sawn longitudinally in half along the core axis using a diamond saw to predetermined intervals for sampling. Cutting is carried out using a diamond saw with the core resting in a specifically designed cradle to ensure straight and accurate cutting.</li> <li>No non-core drill hole sampling has been carried out for this report.</li> <li>Development and stope samples are taken as rock chips by channel sampling of the mining face according to geological boundaries.</li> <li>The sample preparation techniques are up to industry standards.</li> <li>The sample preparation procedure employed follows volume and grain size reduction protocols (-200 mesh) to ensure that a representative aliquot sample is taken for analysis. Grain-size checks for crushing and pulverising are undertaken routinely.</li> <li>For PQ/PQ3, HQ/HQ3, NQ/NQ3 and LTK60 core, the remaining half core is retained for reference. The TT46 drill core is the whole core sampled.</li> <li>Core sample submission sizes vary between 2-5kg depending on core size, sampling interval, and recovery. The assay sample sizes are considered appropriate for the mineralisation style.</li> </ul>  |
| <b>Quality of assay data and laboratory tests</b>     | <ul style="list-style-type: none"> <li><i>The nature, quality and appropriateness of the assaying and laboratory procedures used and whether the technique is considered partial or total.</i></li> <li><i>For geophysical tools, spectrometers, handheld XRF instruments, etc, the parameters used in determining the analysis including instrument make and model, reading times, calibrations factors applied and their derivation, etc.</i></li> <li><i>Nature of quality control procedures adopted (eg standards, blanks, duplicates, external laboratory checks) and whether acceptable levels of accuracy (ie lack of bias) and precision have been established.</i></li> </ul>  | <ul style="list-style-type: none"> <li>All drill core and stope face samples from the mine are submitted to Philsaga Mining Corporation's (PMC) Assay Laboratory at the mill site. Samples are prepared and assayed in the laboratory. Gold is assayed by the fire assay method, an industry-standard commonly employed for gold deposits. It is a total-extraction method and belongs to the ore-grade category. Two assay variants are used based on gold content: the FA30-AAS for Au grades &lt; 5g/t, and FA30-GRAV for Au grades &gt; 5g/t. Both sample preparation and analytical procedures are of industry standards applicable to gold deposits.</li> <li>A QAQC system has been put in place in the PMC Assay Laboratory since 2006. It has been maintained and continually improved up to the present. The quality control system essentially, utilises certified reference materials (CRMs) for accuracy determination at a frequency of 1:60 to 1:25. For precision, duplicate assays are undertaken at 1:20 to 1:10 frequency. Blanks are determined at 1:50 or 1 per batch. Samples assayed with lead button weights outside the accepted range of &gt;25 to &lt;35 grams, are re-assayed after adjustment of the flux.</li> <li>Inter-laboratory check assays with an independent accredited commercial laboratory (Intertek Philippines, Manila) are undertaken at a frequency of 1 per Quarter. Compatibility of assay methods with the external laboratory is ensured to minimise variances due to method differences.</li> <li>The QAQC assessment showed that the CRMs inserted for each batch of samples, generally had accuracy within the acceptable tolerance levels. Duplicate assays generally returned assays within <math>\pm 20\%</math> MPRD for FY2023. Replicate assays of CRMs, showed good precision within &lt; 10% at 95% confidence level, which is within acceptable limits for gold analysis. Intermittent analytical biases were shown but were well within the accepted tolerance limits.</li> </ul> |
| <b>Verification of sampling and assaying</b>          | <ul style="list-style-type: none"> <li><i>The verification of significant intersections by either independent or alternative company personnel.</i></li> <li><i>The use of twinned holes.</i></li> <li><i>Documentation of primary data, data entry procedures, data verification, data storage (physical and electronic) protocols.</i></li> <li><i>Discuss any adjustment to assay data.</i></li> </ul>  | <ul style="list-style-type: none"> <li>Visual inspections to validate mineralisation with assay results has occurred on a regular basis. Independent and alternative company personnel on a regular basis verify significant mineralised intersections.</li> <li>All drilling is diamond drilling and no twinning of holes has been undertaken. The majority of drilling is proximal to mine development and intersections are continually being validated by the advancing mine workings.</li> <li>Geological logging of drill core and drilling statistics are hand written and transferred to a digital database. Original logs are filed and stored in a secure office. Laboratory results are received as hardcopy and in digital form. Hardcopies are kept onsite. Digital data is imported and validated into dedicated mining software programs. The digital database is backed up on a regular basis, and copies are kept onsite.</li> </ul>   |

| Criteria   | JORC Code explanation  | Commentary  |
|--|--|---|
| <b>Location of data points</b>                                 | <ul style="list-style-type: none"> <li>• <i>Accuracy and quality of surveys used to locate drill holes (collar and down-hole surveys), trenches, mine workings and other locations used in Mineral Resource estimation.</i></li> <li>• <i>Specification of the grid system used.</i></li> <li>• <i>Quality and adequacy of topographic control.</i></li> </ul>   | <ul style="list-style-type: none"> <li>• Suitably qualified surveyors and/or experienced personnel, using total station survey equipment locate all drillhole collars. Coordinates are located with respect to Survey Control Stations (SCS) established within the project area and underground.</li> <li>• A local mine grid system, which was adapted from the Philippine Reference System of 1992 (PRS92), is used.</li> <li>• Topographic and underground survey control is maintained using located SCS, which are located relative to the national network of geodetic control points within 10km of the project area. The Company's SCS was audited by independent licensed surveyors (Land Surveys of Perth, Western Australia) in April 2015, and they found no gross errors in the survey data. Land Surveys have since provided independent services to assist mine survey to establish and maintain SCS to a high standard, as the mine deepens. Accuracy is considered to be appropriate for the purposes of mine control.</li> </ul> |
| <b>Data spacing and distribution</b>                           | <ul style="list-style-type: none"> <li>• <i>Data spacing for reporting of Exploration Results.</i></li> <li>• <i>Whether the data spacing and distribution is sufficient to establish the degree of geological and grade continuity appropriate for the Mineral Resource and Ore Reserve estimation procedure(s) and classifications applied</i></li> <li>• <i>Whether sample compositing has been applied.</i></li> </ul>                         | <ul style="list-style-type: none"> <li>• Prior to 2015, surface exploration drillholes were located initially on a 50m and 100m grid spacing, and for resource definition drilling the sectional spacing is at least 50m with 25m sectional spacing for underground holes. Since 2015, resource drilling is conducted wholly from underground with minimum intercept spacing for the major veins of 40m x 40m for Indicated and 80m x 80m for Inferred categories.</li> <li>• Sufficient drilling and underground face sampling has been completed to support Mineral Resource and Ore Reserve estimation procedures.</li> <li>• Sample compositing has not been applied to exploration data for the purposes of reporting.</li> </ul>  |
| <b>Orientation of data in relation to geological structure</b> | <ul style="list-style-type: none"> <li>• <i>Whether the orientation of sampling achieves unbiased sampling of possible structures and the extent to which this is known, considering the deposit type.</i></li> <li>• <i>If the relationship between the drilling orientation and the orientation of key mineralised structures is considered to have introduced a sampling bias, this should be assessed and reported if material.</i></li> </ul> | <ul style="list-style-type: none"> <li>• Mineralisation is hosted within narrow, typically &lt;2m wide quartz veins. Orientations of the veins are typically E-W, with variations from NE-SW to NW-SE, with dips varying from flat-lying to steep dipping to the north. Surface drillholes were generally drilled towards the S and vary in dip (-45° to -60°). Underground drill holes are orientated in various directions and dips, depending on rig access to intersect the various mineralised veins at different locations within the mining area.</li> <li>• Due to the nature of this style of mineralisation and the limited underground access for drilling, drilling may not always intersect the mineralisation or structures at an optimum angle, however this is not considered to be material. A good understanding of the deposit geometry has been developed through mining, such that any sampling bias is recognised and accounted for in the interpretation.</li> </ul>   |
| <b>Sample security</b>   | <ul style="list-style-type: none"> <li>• <i>The measures taken to ensure sample security.</i></li> </ul>   | <ul style="list-style-type: none"> <li>• Drilling is supervised by Philsaga mine geologists and exploration personnel. All samples are retrieved from the drill site at the first opportunity and taken to a secure compound where the core is geologically logged, photographed and sampled. Samples are collected in tagged plastic bags, and stored in a lockable room prior to transportation to the laboratory. The samples are transported to the laboratory using in-house contractor's (Bastareche Trucking Services) vehicles and accompanied by company personnel.</li> </ul>   |

| Criteria                 | JORC Code explanation  | Commentary   |
|--------------------------|--|--|
| <b>Audits or reviews</b> | <ul style="list-style-type: none"> <li><i>The results of any audits or reviews of sampling techniques and data.</i></li> </ul> | <ul style="list-style-type: none"> <li>In August 2018, Intertek Testing Services Phils, Inc. conducted and reported on an independent review of available QA/QC data. There were procedural issues identified by the audit that were immediately rectified.</li> <li>There has been no independent laboratory audit during the COVID 19 pandemic years but is scheduled to resume mid-Quarter next FY.</li> <li>The Laboratory is compliant to ISO 14001:2015 as part of the Company's (i.e. PMC &amp; MMPRC) accreditation.</li> <li>A follow up independent audit by a third party is scheduled in between August to October 2023.</li> <li>Since October 2016, the Philsaga laboratory was visited several times by Mr JP Llorca. As of 2016, the Company has conducted its own QAQC using Acquire database management software. This work is carried out on-site by Philsaga GIS personnel who are trained and experienced in QAQC protocols.</li> <li>The accuracy of the gold determinations was predominantly within the tolerance limits for both PMC laboratory and the independent checking laboratory. The precision of assay is better for the independent laboratory and as such, where diamond drilling assays exist for both laboratories, results from the independent laboratory have been used, in preference to PMC assays, for Mineral Resource estimation.</li> <li>Sampling techniques and database management is to industry standard.</li> </ul> |

## Section 2. Reporting of Exploration Results

(Criteria listed in the preceding section also apply to this section)

| Criteria  | JORC Code explanation   | Commentary  |
|---|---|---|
| <b>Mineral tenement and land tenure status</b>                          | <ul style="list-style-type: none"> <li>Type, reference name/number, location and ownership including agreements or material issues with third parties such as joint ventures, partnerships, overriding royalties, native title interests, historical sites, wilderness or national park and environmental settings.</li> <li>The security of the tenure held at the time of reporting along with any known impediments to obtaining a license to operate in the area.</li> </ul>  | <ul style="list-style-type: none"> <li>The Co-O mine is operated under Mineral Production Sharing Agreements ("MPSA") MPSAs 262-2008-XIII and 299-2009-XIII, which covers a total of 4,739 hectares.</li> <li>Aside from the prescribed gross royalties payable to the Philippine government (2%) and the Indigenous People (1%), no other royalties are payable on production from any mining activities within the MPSA.</li> <li>All the Company tenements are kept current and compliant with all statutory requirements.</li> </ul>  |
| <b>Exploration done by other parties</b>                                | <ul style="list-style-type: none"> <li>Acknowledgement and appraisal of exploration by other parties.</li> </ul>  | <ul style="list-style-type: none"> <li>The Co-O mine was initially developed in 1989 by Banahaw Mining and Development Corporation ("BMDC"), a wholly owned subsidiary of Musselbrook Energy and Mines Pty Ltd. The operation closed in 1991 and was placed on 'care and maintenance' until its purchase by PMC in 2000. PMC recommissioned the Co-O mine and began small-scale mining operations.</li> <li>Medusa Mining Ltd ("MML") listed on the ASX in December 2003, and in December 2006, completed the acquisition of its relevant interests in the Co-O mine and other assets including the mill and numerous tenements and joint ventures. MML, through PMC, has since been actively exploring the Co-O tenements.</li> <li>Medusa Mining Ltd ("MML") changed its name last 10 May 2022 to <b>Ten Sixty Four Limited ("X64")</b>.</li> </ul>   |
| <b>Geology</b>  | <ul style="list-style-type: none"> <li>Deposit type, geological setting and style mineralisation.</li> </ul>  | <ul style="list-style-type: none"> <li>The Co-O deposit is an intermediate sulphidation, epithermal gold (+Ag ±Cu±Pb±Zn) vein system. The deposit is located in the Eastern Mindanao volcano-plutonic belt of the Philippines.</li> </ul>   |
| <b>Drill hole Information</b>   | <ul style="list-style-type: none"> <li>A summary of all information material to the understanding of the exploration results including a tabulation of the following information for all Material drill holes: <ul style="list-style-type: none"> <li>Easting and northing of the drill hole collar</li> <li>Elevation or RL (Reduced Level – elevation above sea level in metres) of the drill hole collar</li> <li>Dip and azimuth of the hole</li> <li>Down hole length and interception depth</li> <li>Hole length</li> </ul> </li> <li>If the exclusion of this information is justified on the basis that the information is not Material and this exclusion does not distract from the understanding of the report, the Competent Person should clearly explain why this is the case.</li> </ul> | <ul style="list-style-type: none"> <li>Detailed information concerning the drill holes forming the basis of this Mineral Resource estimate is not included in this report because the data set is too large and the information has been previously publicly reported. The information is not material in the context of this report and its exclusion does not detract from the understanding of this report. For the sake of completeness, the following background information is provided in relation to the drill holes.</li> <li>Easting, northing and RL of the drillhole collars are in both the local mine grid, PRS92 and UTM WGS84 Zone 51 coordinates.</li> <li>Dip is the inclination of the hole from the horizontal. For example, a vertically down drilled hole from the surface is -90°. Azimuth is reported in magnetic degrees, as the direction toward which the hole is drilled. Magnetic North &lt;1° west of True North.</li> <li>Down hole length is the distance from the surface to the end of the hole, as measured along the drill trace. Interception depth is the distance down the hole as measured along the drill trace. Intersection width is the downhole distance of a mineralised intersection as measured along the drill trace.</li> </ul> |
| <b>Data aggregation methods</b>   | <ul style="list-style-type: none"> <li>In reporting Exploration Results, weighting averaging techniques, maximum and/or minimum grade truncations (eg cutting of high grades) and cut-off grades are usually Material and should be stated.</li> <li>Where aggregate intercepts incorporate short lengths of high grade results and longer lengths of low grade result, the procedure used for aggregation should be stated and some typical examples of such aggregations should be shown in detail.</li> <li>The assumptions used for any reporting of metal equivalent values should be clearly stated.</li> </ul>   | <ul style="list-style-type: none"> <li>No top cutting of assays is done for the reporting of exploration results.</li> <li>Short lengths of high-grade assays are included within composited intercepts.</li> <li>Metal equivalent values are not reported.</li> </ul>  |
| <b>Relationship between mineralisation widths and intercept lengths</b> | <ul style="list-style-type: none"> <li>These relationships are particularly important in the reporting of Exploration Results.</li> <li>If the geometry of the mineralisation with respect to the drill hole angle is known, its nature should be reported.</li> <li>If it is not known and only the down hole lengths are reported, there should be a clear statement to this effect (eg 'down hole length, true width not known').</li> </ul>   | <ul style="list-style-type: none"> <li>The majority of drilling is oriented approximately orthogonal to the known orientation of mineralisation. However, the intersection length is measured down the hole trace and may not be the true width.</li> <li>The orientation of the veins is typically E-W, with variations from NE-SW to NW-SE with dips varying from flat-lying to steep to the north. Surface drillholes are generally orientated towards the S and vary in dip (-45° to -60°). Underground drill holes are orientated in various directions and dips, depending on rig access</li> </ul>   |



| Criteria                                  | JORC Code explanation  | Commentary  |
|---|--|---|
|   |  | <p>to intersect the various mineralised veins at different locations within the mining area.</p> <ul style="list-style-type: none"> <li>All drill results are downhole intervals due to the variable orientation of the mineralisation.</li> </ul>  |
| <b>Diagrams</b>                           | <ul style="list-style-type: none"> <li><i>Appropriate maps and sections (with scales) and tabulations of intercepts should be included for any significant discovery being reported these should include but not limited to a plan view of drill hole collar locations and appropriate sectional views.</i></li> </ul>   | <ul style="list-style-type: none"> <li>A longitudinal section is included, showing the locations of significant assay results (Figure 2). Tabulated intercepts are not included as they have been previously reported.</li> </ul>   |
| <b>Balanced reporting</b>                 | <ul style="list-style-type: none"> <li><i>Where comprehensive reporting of all Exploration Results is not practicable, representative reporting of both low and high grades and/or widths should be practiced to avoid misleading reporting of Exploration Results.</i></li> </ul>   | <ul style="list-style-type: none"> <li>Significant intercepts have previously been reported for all DD drillholes that form the basis of the Mineral Resource estimate. Less significant intercepts have not been reported since the drilling is carried out within the mine environs.</li> </ul>   |
| <b>Other substantive exploration data</b> | <ul style="list-style-type: none"> <li><i>Other exploration data, if meaningful and material, should be reported including (but not limited to): geological observations; geophysical survey results; geochemical survey results; bulk samples – size and method of treatment; metallurgical test results; bulk density, groundwater; geotechnical and rock characteristics; potential deleterious or contaminating substances.</i></li> </ul> | <ul style="list-style-type: none"> <li>No other substantive exploration data has been acquired or considered meaningful and material to this announcement.</li> </ul>   |
| <b>Further work</b>                       | <ul style="list-style-type: none"> <li><i>The nature and scale of planned further work (eg tests for lateral extensions of depth extensions or large-scale step-out drilling).</i></li> <li><i>Diagrams clearly highlighting the areas of possible extensions, including the main geological interpretations and future drilling area, provided this information is not commercially sensitive.</i></li> </ul>                                 | <ul style="list-style-type: none"> <li>Recent drilling focused on the eastern geological limits of GHV from Levels 11 to 14 the northern veins indicate favourable mineralisation.</li> <li>Mineralisation is still open to the east, and at depth. Underground exploration and development drilling will continue to test for extensions along strike and at depth to the Co-O vein system.</li> </ul> |

## APPENDIX B: Philippine Tenements

The Company's interest in the Philippine tenements is held through an indirect equity interest.

All tenements are current and in good standing.

### Tenement Schedule (as of 31 March 2024)

| Name          | Tenement ID                   | Registered Holder | Company's Interest <sup>(1)</sup> | Royalty <sup>(2)</sup> | Area <sup>(3)</sup> (hectares) |
|---------------|-------------------------------|-------------------|-----------------------------------|------------------------|--------------------------------|
| Co-O Mine     | MPSA 262-2008-XIII            | PMC               | 40%                               | -                      | 2,539                          |
|               | MPSA 299-2009-XIII            | PMC               | 40%                               | -                      | 2,200                          |
| Co-O Regional | APSA 00012-XIII               | BMMRC             | 40%                               | -                      | 340                            |
|               | APSA 00098-XIII               | Philcord          | 40%                               | 1% NPI                 | 507                            |
| Saugon        | EPA 00069-XIII <sup>(4)</sup> | Phsamed           | 40%                               | -                      | 2,540                          |
| Corplex       | APSA 00077-XIII               | Corplex           | 40%                               | 4% GSR                 | 810                            |

#### Notes:

1. The Company's interest in the tenements is held through indirect equity interests in the companies holding those tenements, or beneficial interest, through various subsidiaries of PMHI. The Company's interest remains unchanged from 31 December 2023.
2. Royalties are those payable to registered holders. This does not include the prescribed royalties payable to the Philippine government and the indigenous people of Bunawan, Agusan del Sur.
3. The tenure area remains unchanged from that reported on 31 December 2023.
4. The project was relinquished in August 2022; relinquishment of the area reduction is pending approval and confirmation by MGB. Meanwhile, EPA 00087-XIII was acknowledged by MGB and removed from their registry in December 2023.

#### ABBREVIATIONS:

##### Tenement Types

|      |  |
|------|--|
| APSA | Application for Mineral Production Sharing Agreement |
| EPA  | Application for Exploration Permit                   |
| MPSA | Granted Mineral Production Sharing Agreement         |

##### Registered Holders

|          |   |
|----------|---|
| BMMRC    | Base Metals Mineral & Resources Corporation |
| Corplex  | Corplex Resources Incorporated              |
| PMC      | Philsaga Mining Corporation                 |
| Philcord | Mindanao Philcord Mining Corporation        |
| Phsamed  | Phsamed Mining Corporation                  |

##### Royalty

|     |                       |
|-----|-----------------------|
| GSR | Gross Smelter Royalty |
| NPI | Net Profit Interest   |

## APPENDIX C: Queensland, Australia Tenements

The Company's tenement in the Drummond Basin in Queensland, held by CQ22 Pty Ltd, a 100% owned subsidiary of X64. All the Exploration Permit – Minerals (EPM) are compliant, current and in good statutory standing.

### Tenement Schedule (as of 31 March 2024)

| Name                               | Tenement ID              | Registered Holder | Company's Interest <sup>(1)</sup> | Royalty <sup>(2)</sup> | Sub-Blocks <sup>(3)</sup> |
|------------------------------------|--------------------------|-------------------|-----------------------------------|------------------------|---------------------------|
| Douglas Creek                      | EPM 26346                | CQ22              | 100%                              | -                      | 100                       |
| Scotties Creek (Monteagle)         | EPM 27074                | CQ22              | 100%                              | -                      | 50                        |
| Mt Wilkin                          | EPM 27076                | CQ22              | 100%                              | -                      | 88                        |
| Theresa Creek                      | EPM 27079                | CQ22              | 100%                              | -                      | 78                        |
| Drummond Range                     | EPM 27083                | CQ22              | 100%                              | -                      | 100                       |
| Prairie                            | EPM 27084                | CQ22              | 100%                              | -                      | 38                        |
| Langton Edge                       | EPM 27090                | CQ22              | 100%                              | -                      | 97                        |
| Spring Creek                       | EPM 27100                | CQ22              | 100%                              | -                      | 11                        |
| Bathampton (Alpha/ Expedition Dam) | EPM 27103                | CQ22              | 100%                              | -                      | 31                        |
| Pumpkin Hill                       | EPM 27110                | CQ22              | 100%                              | -                      | 49                        |
| Undara Downs                       | EPM 27112                | CQ22              | 100%                              | -                      | 83                        |
| Tomahawk                           | EPM 27119                | CQ22              | 100%                              | -                      | 86                        |
| Bijingo (Nivram)                   | EPM 27319                | CQ22              | 100%                              | -                      | 93                        |
| Brolga                             | EPM 27318                | CQ22              | 100%                              | -                      | 100                       |
| Fletcher                           | EPM 27320                | CQ22              | 100%                              | -                      | 68                        |
| Yackadoo                           | EPM 27321                | CQ22              | 100%                              | -                      | 80                        |
| Gemini                             | EPM 27322                | CQ22              | 100%                              | -                      | 25                        |
| Redrock                            | EPM 27323                | CQ22              | 100%                              | -                      | 99                        |
| Pigeon Peak                        | EPM 27330                | CQ22              | 100%                              | -                      | 27                        |
| Black Peak                         | EPM 27333                | CQ22              | 100%                              | -                      | 32                        |
| Mt McLaren                         | EPM 27690                | CQ22              | 100%                              | -                      | 8                         |
| Native Bee                         | EPM 27702                | CQ22              | 100%                              | -                      | 60                        |
| Monteagle South                    | EPM 27703                | CQ22              | 100%                              | -                      | 65                        |
| Comstock                           | EPM 27706                | CQ22              | 100%                              | -                      | 95                        |
| Ladlode                            | EPM 27714                | CQ22              | 100%                              | -                      | 63                        |
| Mt. Violet (Application)           | EPM 28559 <sup>(4)</sup> | CQ22              | n/a                               | -                      | n/a                       |
|                                    |                          |                   |                                   | <b>TOTAL</b>           | <b>1,626</b>              |

#### Notes:

1. The Company's interest in the tenements is held thru indirect equity interests in CQ22 Pty Ltd a wholly owned subsidiary of the Company. The Company's interest remains unchanged from 31 December 2023.
2. No Royalties are payable aside from the prescribed royalties<sup>1</sup> payable to the Queensland government.
3. The Queensland Department of Mines and Energy utilises a grid system to describe exploration tenures. Each subblock covers an area of one minute of latitude by one minute of longitude. The area of each subblock across the tenure varies between 315 to 320 hectares. Area of the tenure remains unchanged from 31 December 2023.
4. Application for EPM 28559 was lodged on 24 June 2022, the tenement was granted 16 December 2024.

#### ABBREVIATIONS:

##### Tenement Types

EPM Exploration Permit for Minerals

##### Registered Holders

CQ22 CQ22 Pty Ltd