

1 April 2025

INVESTOR WEBINAR

Breakthrough Minerals Limited (ASX: BTM) ("**Breakthrough**" or the "**Company**") is pleased to invite shareholders and investors to an investor webinar on Wednesday, 2 March at 11:30am AEDT / 8:30am AWST. The webinar will include a presentation by Non-executive Director William Dix, covering the recently announced acquisition of the Errolls Gold Project, located in the Barrambie Greenstone Belt within Western Australia's prolific East Murchison Mineral Field, followed by a Q&A session.

Event: Breakthrough Minerals Investor Webinar

Presenter: William Dix, Non-Executive Director

Time: 11:30am AEDT / 8:30am AWST

Where: Zoom webinar, further details are provided upon registration. To register your interest for the webinar, please click on the link below or copy and paste it into your browser.

Register: https://janemorganmanagement-au.zoom.us/webinar/register/WN_rhs3d4bQR4W9oR_ID2KWmw

After registering your interest, you will receive a confirmation email with information about joining the webinar on the day.

Participants will be able to submit questions via the Q&A function on Zoom throughout the presentation however, we encourage attendees to send through questions beforehand via email to info@janemorganmanagement.com.au

This announcement has been approved for release by the board of Breakthrough Minerals

For further information:

Peretz Schapiro

Executive Director

e: pschapiro@breakthroughminerals.com.au

Chloe Hayes

Investor Relations Manager

e: chloe@janemorganmanagement.com.au

Errolls Gold Project

Barrambie Greenstone Belt
WA

Acquisition Investor Presentation

April 2025



Important Notices and Disclaimer

Disclaimer

This presentation ("**Presentation**") has been prepared by Breakthrough Minerals Limited ("**Company**" or "**Breakthrough Minerals**"). This Presentation contains background information about Breakthrough Minerals current at the date of this Presentation. The Presentation is in summary form and does not purport to be all inclusive or complete. Recipients should conduct their own investigations and perform their own analysis in order to satisfy themselves as to the accuracy and completeness of the information, statements and opinions contained in this Presentation.

This Presentation is not a prospectus, disclosure document or other offering document under Australian law or under any other law. This Presentation is for information purposes only. Neither this Presentation nor the information contained in it constitutes an offer, invitation, solicitation or recommendation in relation to the purchase or sale of Breakthrough Minerals shares in any jurisdiction. This presentation may not be distributed in any jurisdiction except in accordance with the legal requirements applicable in such jurisdiction. Recipients should inform themselves of the restrictions that apply in their own jurisdiction. A failure to do so may result in a violation of securities laws in such jurisdiction.

Not investment advice

Each recipient of the Presentation should make its own enquiries and investigations regarding all information in this Presentation including but not limited to the assumptions, uncertainties and contingencies which may affect future operations of the Company and the impact that different future outcomes might have. Information in this Presentation is not intended to be relied upon as advice to investors or potential investors and has been prepared without taking account of any person's individual investment objectives, financial situation or particular needs. Before making an investment decision, prospective investors should consider the appropriateness of the information having regard to their own investment objectives, financial situation and needs and seek legal, accounting and taxation advice appropriate to their jurisdiction. Breakthrough Minerals is not licensed to provide financial product advice in respect of their securities.

Forward-Looking Statements

This Presentation contains certain "forward-looking statements". The words "expect", "anticipate", "estimate", "intend", "believe", "guidance", "should", "could", "may", "will", "predict", "plan" and other similar expressions are intended to identify forward-looking statements. Indications of, and guidance on, future financial position or performance are also forward-looking statements. Forward-looking statements, opinions and estimates provided in this Presentation are based on assumptions and contingencies which are subject to change without notice and involve known and unknown risks and certainties and other factors which are beyond the control of Breakthrough Minerals and its respective directors and management. Forward-looking statements are provided as a general guide only and should not be relied upon as an indication or guarantee of future performance. Actual results, performance or achievements may differ materially from those expressed or implied in such statements and any projections and assumption on which these statements are based. These statements may assume the success of Breakthrough Minerals business strategies. The success of any of those strategies will be realised in the period for which the forward-looking statement may have been prepared or otherwise. Readers are cautioned not to place undue reliance on forward-looking statements, particularly in light of the current economic climate and the significant volatility, and except as required by law or regulation, none of Breakthrough Minerals and its respective representatives or advisers assumes any obligation to update these forward-looking statements. No representation or warranty, express or implied, is made as to the accuracy, likelihood of achievement or reasonableness of any forecasts, prospects, or statements in relation to future matters contained in this Presentation. The forward-looking statements are based on information available to Breakthrough Minerals as at the date of this Presentation. Except as required by law or regulation (including the ASX Listing Rules), none of Breakthrough Minerals and its respective representatives or advisers undertakes any obligation to provide any additional or updated information whether as a result of a change in expectations or assumptions, new information, future events, or results or otherwise. Indications of, and guidance or outlook on future financial position or performance are also forward-looking statements.

Important Notices and Disclaimer

Past Performance

Investors should be aware that past performance, including past share price performance of the Company and pro-forma financial information given in this Presentation, provides no guidance as to (and should not be relied upon as an indicator of) the future financial performance of the Company. None of the information made available to you under this Presentation is, or shall be relied upon as, a promise, representation, warranty or guarantee, whether as to the past, present or future and the Company does not guarantee any particular rate of return or the performance of the Company.

Competent persons statement

The information in this Presentation that relates to exploration results is extracted from the Company's ASX Announcement titled "Breakthrough Minerals to acquire Strategic Gold Property in WA" lodged with ASX on 31 March 2025. This represents information and supporting documentation compiled by William Dix, who provides technical services to Breakthrough Minerals under a shared services agreement between Breakthrough and Trinex Minerals. Mr Dix is a Director and Shareholder of Breakthrough Minerals. Mr Dix is a Fellow of the Australian Institute of Mining and Metallurgy. Mr Dix has sufficient experience of relevance to the style of mineralisation and the types of deposits under consideration, and to the activities undertaken, to qualify as a Competent Person as defined in the 2012 Edition of the Joint Ore Reserves Committee (JORC) Australasian Code for Reporting of Exploration Results, Mineral Resources and Ore Reserves. Mr Dix consents to the inclusion in this Presentation of the matters based on information in the form and context in which it appears.

The Company confirms that it is not aware of any new information or data that materially affects the information included in the original market announcement. The Company confirms that the form and context in which the Competent Person's findings are presented have not been materially modified from the original market announcement.

Investment risk

There are a number of risks specific to the Company and of a general nature which may affect the future operating and financial performance of the Company and the value of an investment in the Company, including and not limited to the Company's capital requirements, the potential for shareholders to be diluted, budget risks, and operational risks. An investment in Securities is subject to known and unknown risks, some of which are beyond the control of the Company. You should consider the risk factors outlined in the Appendix at the end of this Presentation when deciding whether or not to invest in the Company.



Acquisition Investment Highlights



Strategic location in prolific, underexplored gold belt
Situating in the Barrambie Greenstone Belt, part of the East Murchinson Mineral Field in Western Australia



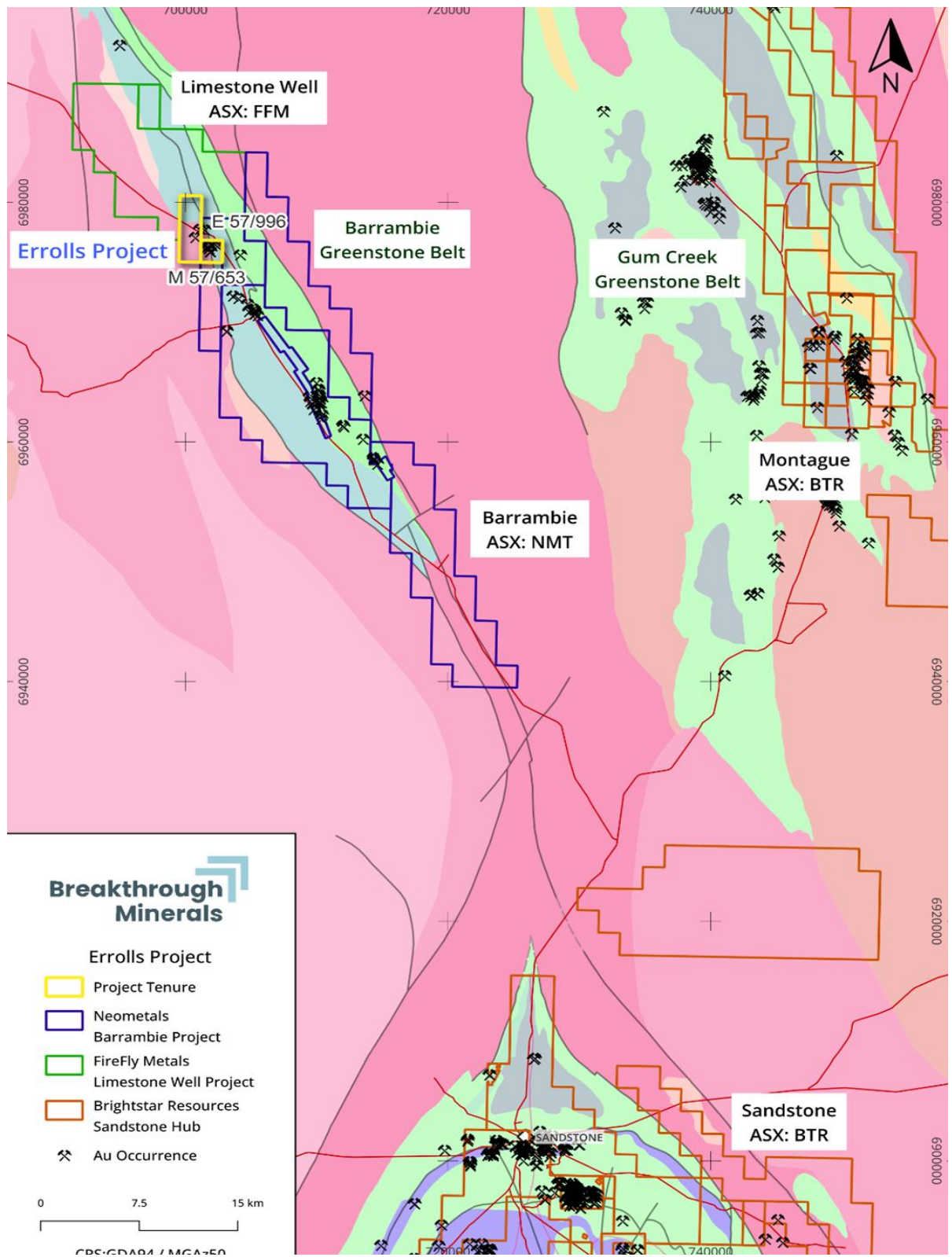
High-grade gold potential with historical production
Historic mining at Errolls Legacy produced **5,230oz at 17.6g/t Au**



Shallow high-grade drill intercepts provides immediate drill ready targets
Includes historical intercept **22m at 7.46 g/t Au** from surface. Average depth of RC drilling on tenure is **only 34m**



Proximal to large Mineral Resources
Sandstone and Gum Creek Greenstone Belts nearby have significant resource endowments (Breakthrough Minerals Resources ASX:BTR, Horizon Gold ASX:HRN)



Barrambie Greenstone Belt

Heart of the Goldfields



Located approximately halfway between Meekatharra and Sandstone in the East Murchison Mineral Field



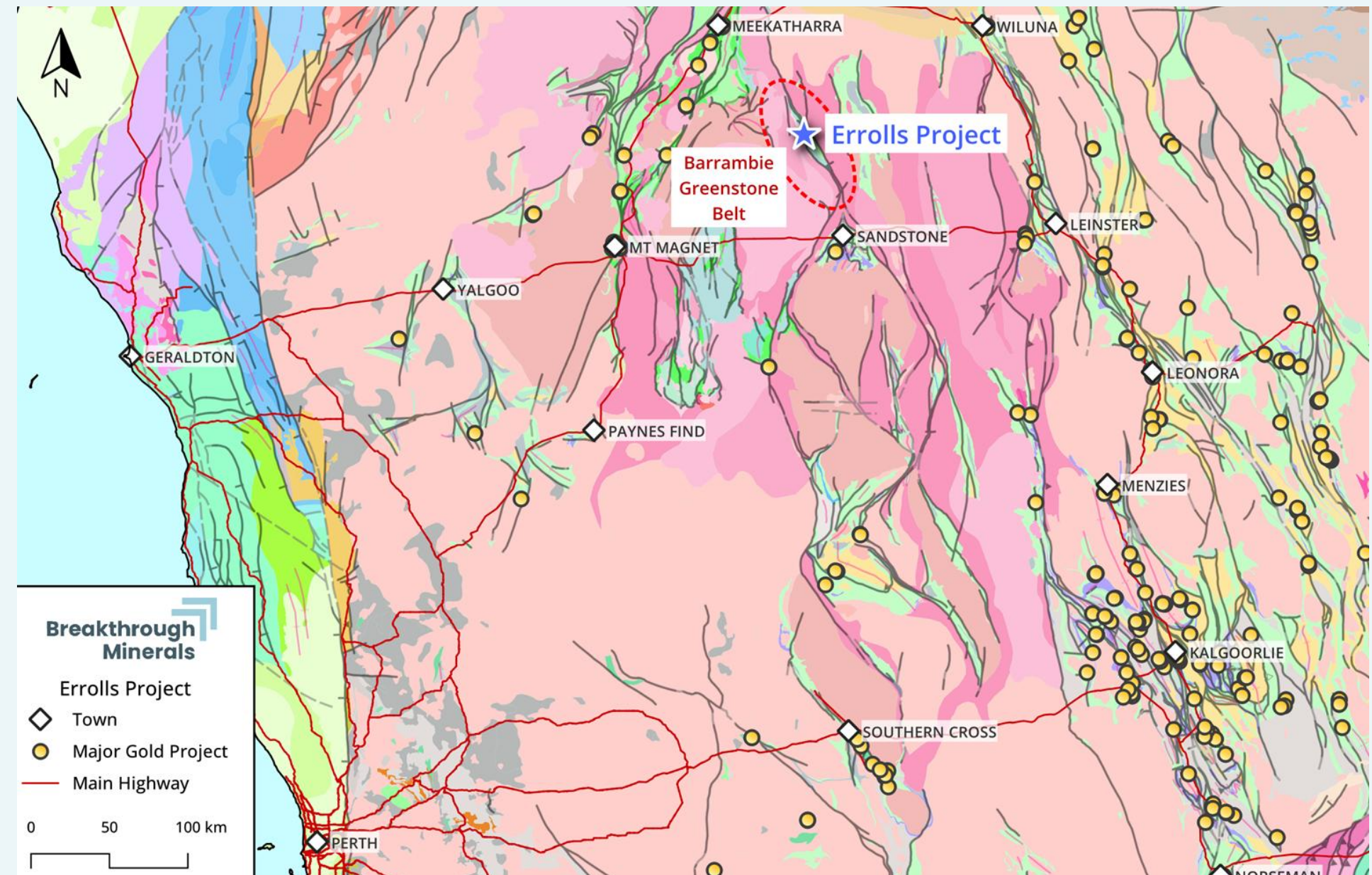
Narrow NNW trending greenstone belt comprising layered mafics and sediments



Underexplored with limited systematic exploration over the last 25 years



High Grade mineralisation - proven discovery of consistent +10g/t Au across varying styles of gold mineralisation.

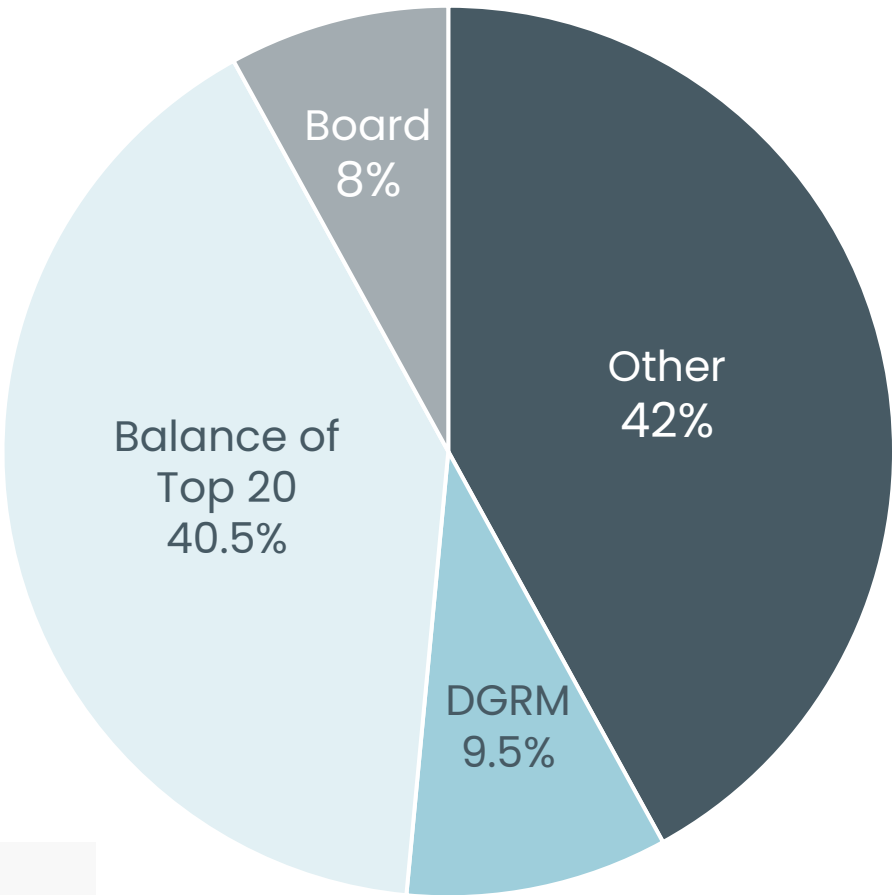


Barrambie Greenstone Belt East Murchison Mineral Field

Corporate Overview

Capital Structure (Pro Forma Post-Transaction)	
ASX Code	BTM
Share Price (26-March-25)	\$0.075
Shares on issue	67.9m
Market Capitalisation	\$5.1m
Cash ¹	\$2.6m
Indicative Enterprise Value (Post transaction)	~ \$2.5m

With a post-transaction enterprise value of \$2.5 million, Breakthrough Minerals is highly leveraged to exploration success at the Errolls Gold Project



Graeme Robertson
Non-Executive Chairman

- 30+ years in coal, infrastructure & power development.
- Former CEO/MD, New Hope Corporation.
- Held directorships at Soul Pattison and AfrAsia Bank.

Peretz Schapiro
Executive Director

- Extensive leadership in resource exploration
- Corporate finance and investment Expertise
- Strong track record of creating shareholder value
- Wide project generation network

William Dix
Non-Executive Director

- 28+ years experience in base metals, gold and uranium exploration and mining.
- 7+ years with LionOre Mining International
- Extensive

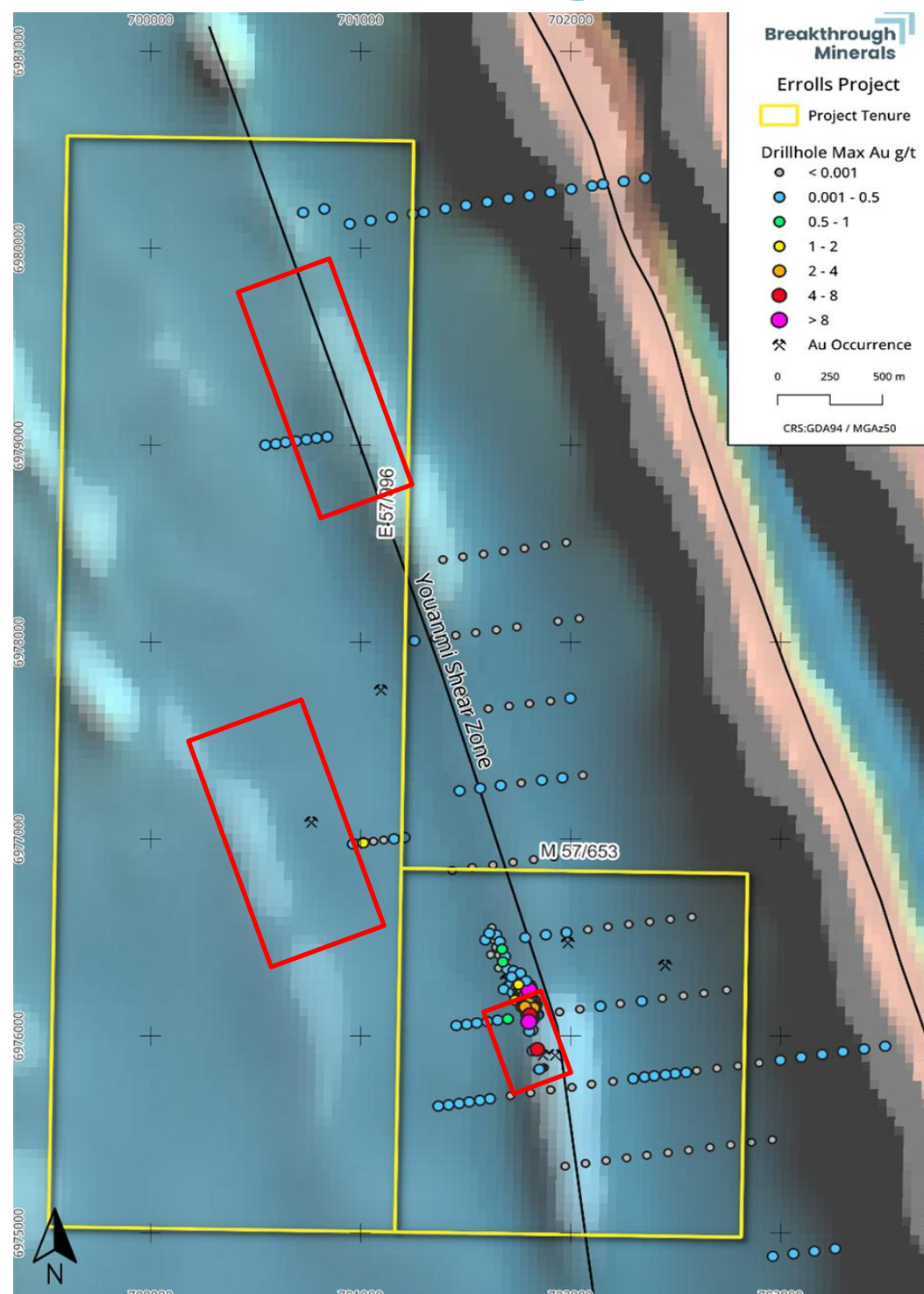
Joel Ives
Company Secretary

- CA with extensive financial & company secretarial experience in resource exploration sectors.
- Expertise in ASX listings and ensuring regulatory compliance.

1. Cash balance includes 31 December 2024 quarterly cash on hand, \$500,000 capital raising in February 2025 and the proposed \$1.2 million placement minus the cash acquisition cost.

Errolls Gold Project

Shallow High-Grade Mineralisation



- **Immediate walk-up drill targets** adjacent to historic high-grade drilling results
- Mineralisation at Errolls Legacy is considered to be **open along strike** to the north and **down-dip** to the southwest
- **Average historical drill hole depth of only 34m** across the project
- **Untested plunge potential** evident in long-section
- Red boxes show additional drill target areas. **Untested shear zones** in the north and west of the project
- Previous RC drilling results include:
 - **20m at 2.74g/t Au** from 14m including:
 - **6m at 7.24g/t Au** from 14m and **3m at 13.26g/t Au** from 16m (ER046)
 - **11m at 6.88 g/t Au** from 14m including:
 - **6m at 12.3 g/t Au** from 14 (ER060)
 - **22m at 7.46 g/t Au** from 0m including:
 - **5m at 31.76 g/t Au** from 8m and **3m at 51.85 g/t Au** from 9m (ER082)
 - **9m at 2.89 g/t Au** from 4m including:
 - **5m at 4.89g/t Au** from 7m (ER102)
 - **5m at 3.62 g/t Au** from 9m including:
 - **3m at 5.70 g/t Au** from 10m (ER109)

Errolls Gold Project – drillhole collars over TMI RTP translucent over IVD – colour coded by maximum DH gold.

Historic High Grade Gold Centres

- ✓ Gold first discovered in 1905
- ✓ History of High-Grade discoveries in multiple gold centres (Errolls, Barrambie, Sugarstone, Scheelite)
- ✓ Historical production from Errolls Legacy of 5,230oz @ 17.6g/t
- ✓ Mineralisation is generally found in massive laminated quartz veins that are flat lying, up to 20m thick and can contain very high grades
- ✓ Multiple additional targets around Errolls
- ✓ NeoMetals Limited's immediately adjacent (ASX:NMT) Barrambie Gold Project has an Exploration Target of between 8Mt @ 1.3g/t Au - 10.5Mt @ 2.3g/t Au for **335k - 775k oz Au¹**

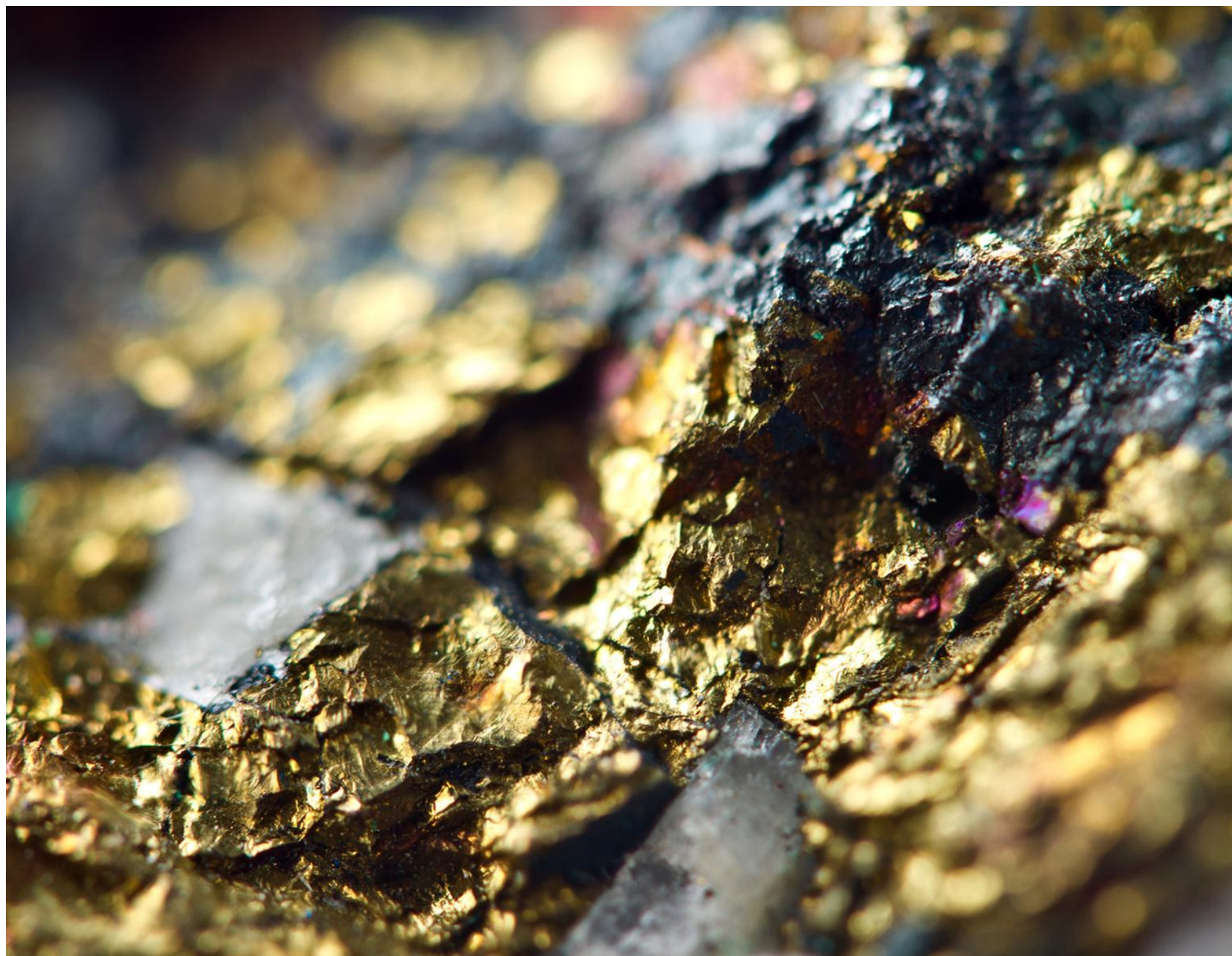


Errolls Project Location and surrounding tenure

¹ Neometals' ASX announcement dated 23 September 2024

Errolls Gold Project

Transaction Summary



- ✓ 100% Purchase of E57/996 and M57/653(a)
- ✓ Consideration:
 - \$150,000 cash and 3,500,000 Breakthrough Minerals Shares
 - 1M Performance rights on a 50g/t drill intercept (i.e. 10m at 5g/t or 2m at 25g/t with a 0.5 g/t cut off)
 - 1M Performance rights on a 100 g/t drill intercept (i.e. 20m at 5 g/t or 10m at 10 g/t with a 0.5 g/t cut off)
- ✓ 100% of the issued stock will be voluntarily escrowed for six months
- ✓ A contemporaneous placement to raise \$1.2 million to fund near term exploration

Errolls Gold Project

Next Steps

- Completion of transaction and capital raising (subject to shareholder approval)
- Approval of POW for drilling program (pending)
- Drill test south along strike and new target to the north



Appendix – Key risks

As with any share investment, there are risks involved. The following identifies the major areas of risk associated with an investment in the Company but should not be taken as an exhaustive list of the potential risk factors to which the Company and its shareholders are exposed. Potential investors should consult their professional advisers before deciding whether to apply for Shares. Any investment in the Company should be considered highly speculative.

(a) Completion risk

As at the date of this Presentation, the Company's interest in the Errolls Gold Project will be subject to the satisfaction of several conditions precedent which are outside of the Company's control such as resolution of the forfeiture application in respect of E57/996 ("**Forfeiture Application**") and receipt of shareholder approval to issue the consideration securities to the vendor of the Errolls Gold Project.

In particular, for the Forfeiture Application to be successfully resolved by the Department of Energy, Mines, Industry Regulation and Safety ("**Department**"), either a fine will be issued by the Department and paid by the vendor of the Errolls Gold Project or the Forfeiture Application is to be determined without the imposition of any penalty or forfeiture.

There is a risk that the conditions precedent for the purchase agreement in respect of the Errolls Gold Project ("**Purchase Agreement**") will not be fulfilled and, in turn, that the Purchase Agreement will not be completed. If completion of the Purchase Agreement does not occur, the Company will not acquire any interest in the Errolls Gold Project. There can be no certainty, nor can the parties provide any assurance, that all conditions precedent to the Purchase Agreement will be satisfied, nor can there be any certainty of the timing of their satisfaction.

(b) Permitting and regulatory risks

The Company's exploration and development activities are subject to extensive regulations covering licensing, environmental compliance, taxation, worker safety, waste management, heritage protection, and other areas. Permits are required for exploration, development, production, and rehabilitation, but obtaining them can be time-consuming and uncertain. Delays, costs, or failure to secure permits on acceptable terms could impact project development or mining operations. Non-compliance, even inadvertently, may lead to fines, penalties, operational suspension, or permit forfeiture.

(c) Exploration and study risks

The Company's projects are at a relatively early stage of exploration and development. Potential investors should understand that mineral exploration and development are high-risk undertakings. The future exploration activities of the Company may be affected by a range of factors including geological conditions, limitations on activities due to seasonal weather patterns or adverse weather conditions, unanticipated operational and technical difficulties, difficulties in commissioning and operating plant and equipment, mechanical failure or plant breakdown, unanticipated metallurgical problems which may affect extraction costs, industrial and environmental accidents, industrial disputes, unexpected shortages and increases in the costs of consumables, spare parts, plant, equipment and staff, matters, permitting, changing government regulations and many other factors beyond the control of the Company.

(d) Future capital requirements

Any additional equity financing may be dilutive to Shareholders, may be undertaken at lower prices than the current market price or may involve restrictive covenants which limit the Company's operations and business strategy. Debt financing, if available, may involve restrictions on financing and operating activities.

As an exploration entity, the Company is making a loss, meaning it is reliant on raising funds from investors or lenders in order to continue to fund its operations and to scale growth. Although the directors of the Company believe that additional capital can be obtained, no assurances can be made that appropriate capital or funding, if and when needed, will be available on terms favourable to the Company or at all. If the Company is unable to obtain additional financing as needed, the Company may be required to reduce the scope of its activities, which could have a material adverse effect on the Company's activities and could affect the Company's ability to continue as a going concern.

The Company may undertake additional offerings of shares and of securities convertible into Shares in the future. The increase in the number of shares issued and outstanding and the possibility of sales of such shares may have a depressive effect on the price of shares. In addition, as a result of such additional shares, the voting power of the Company's existing shareholders will be diluted.

Key risks (cont.)

(e) Acquisition and disposal of projects

The Company may acquire new projects or divest some or all of its interest in its project portfolio in the future. There can be no guarantee that any new project acquisition will eventuate from these pursuits, or that any acquisitions will result in a return for Shareholders. The Directors will use their expertise and experience in the energy and resources sector to assess the value of potential projects that have characteristics that are likely to provide returns to Shareholders, however, Shareholders should be aware that future acquisitions and the cost of funding exploration on future projects will likely contribute directly or indirectly to the issue of further shares, which in turn will further dilute Shareholders' interest in the Company and deplete the Company's cash.

(f) Tenure risk

There is no assurance that delays will not occur in connection with obtaining all necessary grants or renewals of licences/permits for the proposed operations, additional licences/permits for any possible future changes to operations, or additional permits associated with new legislation. Prior to any development on any of its properties, the Company must receive licences/permits from appropriate governmental authorities. There is no certainty that the Company will hold all licences/permits necessary to develop or continue operating at any particular property.

(g) Environmental risks

The operations and proposed activities of the Company are subject to laws and regulations concerning the environment. As with most exploration projects and mining operations, the Company's activities are expected to have an impact on the environment. It is the Company's intention to conduct its activities to the highest standard of environmental obligation, including compliance with all environmental laws. The existence of these environmentally sensitive areas and requirements for the Company to prepare necessary management plans and obtain additional approvals may impact or delay the Company's ability to carry out exploration or mining activities within the affected areas. The cost and complexity of complying with the applicable environmental laws and regulations may prevent the Company from being able to develop potentially economically viable mineral deposits.

(h) Reliance on key management

The Company is reliant on a number of key personnel employed or engaged by the Company. Loss of such personnel may have a materially adverse impact on the performance of the Company.

(i) Development risks

Possible future development of a mining operation at the Company's projects is dependent on a number of factors including, but not limited to, the acquisition and/or delineation of economically recoverable mineralisation, favourable geological conditions, receiving the necessary permits and approvals from all relevant authorities and parties, seasonal weather patterns, unanticipated technical and operational difficulties encountered in extraction and production activities, mechanical failure of operating plant and equipment, shortages or increases in the price of consumables, spare parts and plant and equipment, cost overruns, access to the required level of funding and contracting risk from third parties providing essential services'. If the Company commences production, its operations may be disrupted by a variety of risks and hazards which are beyond its control, including environmental hazards, industrial accidents, technical failures, labour disputes, unusual or unexpected rock formations, flooding and extended interruptions due to inclement or hazardous weather conditions and fires, explosions or accidents. No assurance can be given that the Company will achieve commercial viability through the development or mining of the Company's projects and treatment of ore.

(j) Unforeseen expenditure risk

Expenditure may need to be incurred that has not been taken into account by the Company. Although the Company is not aware of any such additional expenditure requirements, if such expenditure is subsequently incurred, this may adversely affect the expenditure proposals of the Company.

Key risks (cont.)

(k) Metallurgy

Metal and/or mineral recoveries are dependent upon the metallurgical process that is required to liberate economic minerals and produce a saleable product and by nature contain elements of significant risk such as:

- identifying a metallurgical process through test work to produce a saleable metal and/or concentrate;
- developing an economic process route to produce a metal and/or concentrate; and
- changes in mineralogy in the ore deposit can result in inconsistent metal recovery, affecting the economic viability of the project.

(l) Competition risk

The industry in which the Company is involved is subject to domestic and global competition, including major mineral exploration and production companies. Although the Company will undertake all reasonable due diligence in its business decisions and operations, the Company will have no influence or control over the activities or actions of its competitors, which activities or actions may, positively or negatively, affect the operating and financial performance of the Company's projects and business.

(m) Resource risk

There is inherent uncertainty with mineral resource estimates. In addition, there is no guarantee that inferred mineral resource estimates can successfully be converted to indicated or measured mineral resource estimates to allow potential reserve estimates. There remains risk, regardless of JORC Code 2012 or other status, with actual mining performance against any resource or reserve estimates.

(n) Land access risk

Land access is critical for exploration and/or exploitation to succeed. It requires both access to the mineral rights and access to the surface rights. The Company may not be successful in acquiring or obtaining the necessary licences to conduct exploration or evaluation activities outside of the licences that it already owns.

Access rights right can be affected by numerous factors including (but not limited to) regional restrictions on mineral exploration as a result of land use agreements with local communities, surface title land ownership negotiations and natural occurrences including inclement weather and natural disasters.

These issues have the potential to delay, curtail and preclude the Company's operations. There is a risk that local communities or affected groups may take actions to delay, impede or otherwise terminate the contemplated activities of the Company. There can be no guarantee that the Company will be able to negotiate a satisfactory agreement with any such existing landowners/occupiers for such access, and therefore it may be unable to carry out significant exploration and development activities.