



DREADNOUGHT
RESOURCES



Finding the Metals for Our Future

September Quarterly Presentation
31 October 2024

ASX:DRE



Disclaimer

Refer to Dreadnought announcements for JORC Table 1 and Table 2 for results and information contained in this presentation.

Central Yilgarn Project

27 April 2021	Illaara Update and Regional Target Generation
31 May 2021	Drilling Results – Illaara Au-Cu-Iron Ore Project
7 July 2021	High-Grade Tantalum Results from Peggy Sue – Illaara Project
1 August 2022	Completion of Acquisition – Central Yilgarn Project
1 November 2022	Successful Drill Results Across Multiple Metals
27 April 2022	Initial High-Grade Resource at Metzke's Find
8 February 2024	Seven Camp Scale Gold Prospects at Central Yilgarn

Kimberley Project

25 August 2021	RC Results from Orion, Grant's Find & Fuso Indicate Large Cu-u-Ag-Co System
27 August 2021	Bonanza Grade Cu-Ag-Sb-Bi Mineralisation at rough Triangle
15 November 2021	High-Grade Cu-Ag-Au-Co Discovery at Orion
8 December 2021	Further High-Grade Cu-Ag-Au-Co-Zn Orion Discovery
22 June 2022	Orion Auger Program – Taraji-Yampi Project
20 June 2023	Highly Conductive Anomalies Enhance Orion Look-Alikes– Taraji-Yampi Project

Mangaroon Project

7 April 2021	Option/JV Agreement Signed with Global Base Metal Miner
16 July 2021	~1km Long Gossanous Ni-Cu-PGE Outcrop at Mangaroon
19 July 2021	High-Grade REE Ironstones Confirmed Over 2.5kms at Mangaroon
1 September 2021	Encouraging Results for Rare Earths at Yin
9 September 2021	Four New REE Ironstones Discovered at Mangaroon
2 February 2022	Rare Earths, Phosphate, Niobium & Zirconium Results from Mangaroon
14 February 2022	Conductors Defined along the Money Intrusion – Mangaroon FQM JV
16 June 2022	First Drilling at Yin Intersects High-Grade Rare Earths
28 July 2022	Assays Confirm Yin as a High-Grade Rare Earth Discovery
5 September 2022	Further Assays Confirm Yin as A Significant REE Discovery
12 October 2022	Broad, High-Grade Assays at Yin REE Discovery – Mangaroon
17 October 2022	Mineralised Carbonatites Discovered at C3 and C4 – Mangaroon
24 October 2022	Broad, High-Grade Assays at Yin REE Discovery – Mangaroon
10 November 2022	Exploration Update Mangaroon Ni-Cu-PGE
21 November 2022	Broad, High-Grade Assays at Yin REE Discovery – Mangaroon
28 December 2022	Initial High-Grade, Independent Resource Over 3kms at Yin
24 January 2023	Carbonatite Discovery Shaping up as Regional Rare Earth Source
27 January 2023	Mineralised REE Ironstones increased by 13kms to 43kms
13 February 2023	Rare Earth Ironstone Exploration Target Defined
13 March 2023	Successful Yin Extensional Drilling Results – Mangaroon
3 April 2023	Carbonatites deliver thick near surface REE Results
29 May 2023	Metallurgical Test work Supports High Grade Concentrate
6 June 2023	Mangaroon Gold Review and Further Consolidation
13 June 2023	Yin Extended by 1km & 2.5km of High Grade NdPr Discoveries
5 July 2023	40% Increase in Resource Tonnage at Yin
10 July 2023	High Grade Rare Earth & Niobium Zones at C3 & C5
13 September 2023	Highest Grades to date from Yin Infill Drilling
2 October 2023	Mangaroon Carbonatite now >17km – Higher Grade Zones Fingerprinted

16 October 2023	100m Thick Rare Earth Intercepts from Yin
30 November 2023	Large, High Confidence Yin Ironstone Resource
6 December 2023	Gifford Creek REE-Nb-P-Ti-Sc Carbonatite Drilling Update
11 December 2023	Thick, High-Grade Gold Including 7m @ 23.0g/t Au
22 January 2024	Star of Mangaroon Extended
6 June 2024	Gifford Creek REE-Nb Carbonatite Update
18 June 2024	Tiger Cu-Au-Zn-Ag Gossan Confirmed over 500m
19 June 2024	Drilling Extended for Nb-REE and Cu-Au Targets

Bresnahan REE-Au Project

8 February 2023	Bresnahan Emerging As a Light & Heavy Rare Earth Province
26 October 2023	Significant HREE, Gold & Uranium Potential

This presentation has been prepared by Dreadnought Resources Limited (Dreadnought or the Company). It contains general information about the Company's activities current as at the date of the presentation. The information is provided in summary form and does not purport to be complete. This presentation is not to be distributed (nor taken to have been distributed) to any persons in any jurisdictions to whom an offer or solicitation to buy shares in the Company would be unlawful. Any recipient of the presentation should observe any such restrictions on the distribution of this presentation and warrants to the Company that the receipt of the presentation is not unlawful. It should not be considered as an offer or invitation to subscribe for or purchase any securities in the Company or as an inducement to make an offer or invitation with respect to those securities. No agreement to subscribe for securities in the Company will be entered into on the basis of this presentation or any information, opinions or conclusions expressed in the course of this presentation. This presentation is not a prospectus, product disclosure document or other offering document under Australian law or under any other law. It has been prepared for information purposes only. This presentation contains general summary information and does not take into account the investment objectives, financial situation and particular needs of any individual investor. It is not financial product advice and investors should obtain their own independent advice from qualified financial advisors having regard to their objectives, financial situation and needs. Dreadnought nor any of their related bodies corporate is licensed to provide financial product advice. This presentation and information, opinions or conclusions expressed in the course of this presentation contains forecasts and forward-looking information. Such forecasts, projections and information are not a guarantee of future performance, involve unknown risks and uncertainties. Actual results and developments will almost certainly differ materially from those expressed or implied. There are a number of risks, both specific to Dreadnought, and of a general nature which may affect the future operating and financial performance of Dreadnought, and the value of an investment in Dreadnought including and not limited to title risk, renewal risk, economic conditions, stock market fluctuations, commodity demand and price movements, timing of access to infrastructure, timing of environmental approvals, regulatory risks, operational risks, reliance on key personnel, reserve estimations, native title risks, cultural heritage risks, foreign currency fluctuations, and mining development, construction and commissioning risk. You should not act or refrain

from acting in reliance on this presentation, or any information, opinions or conclusions expressed in the course of this presentation. This presentation does not purport to be all inclusive or to contain all information which its recipients may require in order to make an informed assessment of the prospects of Dreadnought. You should conduct your own investigation and perform your own analysis in order to satisfy yourself as to the accuracy and completeness of the information, statements and opinions contained in this presentation before making any investment decision. Recipients of this presentation must undertake their own due diligence and make their own assumptions in respect of the information contained in this presentation and should obtain independent professional advice before making any decision based on the information. No representation or warranty, express or implied, is made in relation to the fairness, accuracy or completeness of the information, opinions and conclusions expressed in the course of this presentation. To the maximum extent permitted by law, no representation, warranty or undertaking, express or implied, is made and, to the maximum extent permitted by law, no responsibility or liability is accepted by the Company or any of its officers, employees, agents or consultants or any other person as to the adequacy, accuracy, completeness or reasonableness of the information in this presentation. To the maximum extent permitted by law, no responsibility for any errors or omissions from this presentation whether arising out of negligence or otherwise is accepted. An investment in the shares of the Company is to be considered highly speculative. The exploration targets or conceptual exploration targets in this presentation or expressed during the course of this presentation are subject to completion of the necessary feasibility studies, permitting and execution of all necessary infrastructure agreements. This presentation and information, opinions or conclusions expressed in the course of this presentation should be read in conjunction with Dreadnought's other periodic and continuous disclosure announcements lodged with the ASX, which are available on the Dreadnought website. They involve risk and uncertainties that could cause actual results to differ from estimated results. Forward-looking statements include, but are not limited to, statements concerning the Company's exploration programme, outlook and target sizes. They include statements preceded by words such as "potential", "target", "scheduled", "planned", "estimate", "possible", "future", "prospective" and similar expressions.

Competent Person's Statement

The information in this announcement that relates to geology and exploration results and planning was compiled by Mr. Dean Tuck, who is a Member of the AIG, Managing Director, and shareholder of the Company. Mr. Tuck has sufficient experience which is relevant to the style of mineralisation and type of deposit under consideration and to the activity being undertaken to qualify as a Competent Person as defined in the 2012 Edition of the 'Australasian Code for Reporting of Exploration Results, Mineral Resources and Ore Reserves'. Mr. Tuck consents to the inclusion in the report of the matters based on the information in the form and context in which it appears.

The Company confirms that it is not aware of any new information or data that materially affects the information in the original reports, and that the forma and context in which the Competent Person's findings are presented have not been materially modified from the original reports. (referencing historic and new company announcements).



Board and Management with Skin in the Game



Paul Chapman
Non-Exec Chairman

- Chartered accountant with 30+ years experience in the resources sector
- Founding shareholder and/or director of Black Cat Syndicate, Reliance Mining, Encounter Resources, Rex Minerals, Silver Lake Resources, GCX Metals and Avanco Resources
- Non-Executive Chairman of Meeka Minerals, a Non-Executive Director of gold developer Black Cat Syndicate and gold/base metals explorer Sunshine Metals



Dean Tuck
Managing Director

- Experienced geologist and exploration manager having worked across a wide range of commodities in Australia, Brazil and SE Asia from project generation through to resource evaluation
- Previously held senior level positions ranging from private companies to BHP Billiton and ASX listed junior explorers
- Instrumental in several discoveries covering Cu-Ag-Au-Co massive sulphide, REE ironstones, REE-Nb-Phosphate carbonatites, orogenic gold, LCT pegmatites and iron ore



Phillip Crutchfield
Non-Exec Director

- Prominent and well-respected barrister specialising in commercial law
- Director of Encounter Resources and Hamelin Gold
- Chair of the Bell Shakespeare Theatre Company and the Victorian Bar Foundation
- Former Chair of highly successful financial services company Zip Co and former Director of Applyflow and Black Cat Syndicate
- Former partner of Mallesons Stephen Jaques (now King & Wood Mallesons)



Robert Gee
Non-Exec Director

- Experienced hydrometallurgist and technical manager with 30+ years experience in the resources and battery chemicals sectors
- Previously held senior positions in both the private and public sectors working in operations, technical development and consulting
- Worked for several small and large organisations including BHP Billiton and ANSTO



Jessamyn Lyons
Company Secretary

- Chartered secretary and Fellow of the Governance Institute of Australia
- Director of Nexia Perth, Company Secretary of Ragnar Metals and Echo IQ
- 15+ years experience working in the stockbroking and banking industries and has held various positions with Macquarie Bank, UBS Investment Bank (London), and Patersons Securities



Debbie Fullarton
CFO

- Held numerous senior finance roles across multiple continents, including Africa and Australia
- Proven track record of driving business growth, managing risk, and optimising financial performance
- Former CFO of a major mining company where she led the finance team through a period of significant growth and transformation



Matt Crowe
COO

- 13+ years at BHP, and several junior exploration companies, exploring for gold, lithium, nickel, copper and PGEs in the Wheatbelt, West Musgraves and Gascoyne
- Instrumental in several discoveries covering Cu-Ag-Au-Co massive sulphide, Ni-Cu-PGE massive sulphides, REE ironstones, REE-Nb-Phosphate carbonatites, LCT pegmatites and iron ore



Dreadnought Resources Snapshot

Capital Structure

ASX Code	DRE
Share Price (30/10/2024)	\$0.015
Shares on Issue	3,752M
Market Cap	~\$56.3M
Cash (30/9/2024 + R&D Rebate + receivables)	~\$2.6M
Unlisted Securities	~34M
Liquidity (90-day average)	~\$0.1M / day

Highly active West Australian mineral explorer focused on discovering the metals needed for our future



Board and Management with Skin in the Game
\$6.8M Cash invested
~15% Shareholding

Money in the Ground
>85% Money raised to date spent on exploration

Join our Investor Hub
Be the first to get notified about news, updates and announcements

Consistent News Flow
Average ~1 Announcement per week

Mineral Explorer
with Multicommodity Optionality and a Track Record of Discovery

Analyst Coverage

Paul Howard

SIGN UP



investorhub.dreadnoughtresources.com.au



DREADNOUGHT
RESOURCES

Strategy and Focus

For the remainder of 2024

ASX:DRE



Strategy and Focus



1. Transform into a self-funded explorer:

- High-grade open pit at Star of Mangaroon
- Outsource funding, development, haulage & processing to third parties
- Extend concept to Popeye, Two Peaks, Lead, Pritchard Well etc

2. Progress Gifford Creek Carbonatite to commercial assessment by low cost/high value add work:

- Estimate the potential resource size/grade
- Conceptual economics
- Progress to Resource 100% or JV

3. Discovery:

- Star of Mangaroon Camp Scale Prospect
- Bordah Camp Scale Prospect
- High Range Camp Scale Prospect

4. Commercialisation of portfolio & discovery funded by third parties:

- Mangaroon REE: significant proven scale with plenty of upside, minimise holding costs, maximize preparedness for REE upturn
- Mangaroon Ni-Cu: confirmed sulphide Ni-Cu in ~50km long Money Intrusion, JV discussions well advanced
- Breenah U-HREE-Au-Sb-Ag: U targets identified by global U companies; partial JV discussions well advanced
- Tarraji-Yampi: confirmed Cu-Au massive sulphide discovery, strategic review underway
- Central Yilgarn: multiple, confirmed high-grade gold, iron-ore and base metals targets, JV discussions well advanced



DREADNOUGHT
RESOURCES

GRAZIER TELLS HOW HE STRUCK
IT RICH WHILE HE WAS ROWING
UP A CREEK ON HIS PROPERTY

How I found gold

SPECIAL REPORTER

PERTH, Sat. —
A West Australian
grazier today told
how he found more
than \$40,000 worth
of gold on his prop-
erty.
The gold weighed 1,400
ounces.

Donald, of Mangaroon
station, north of Gascoyne
Junction, about 650 miles
north of Perth, named his
mine Star of Mangaroon.

While learning up a creek
in the area he found a gold-
bearing stone outcrop.

"I sent the first sample
of ore to Perth to be
assayed and was staggered
to find that it went 100oz
7dwt to the ton," he said.

On the bottom of the
assayer's report was written,
"If you don't start working
this I'll come up and do it
myself."

McDonald pegged a pro-
specting area of 24 acres and
started working the mine
on May 30, 1960.

In November that year
the first trial crushing went
through the old battery at
the mining ghost town of
Peak Hill, more than 300
miles from Mangaroon.

The result from 38 tons
of ore was a staggering
145oz of gold.

Two shafts

In June, 1961, 60 tons of
ore was crushed at the
Meekatharra State Battery
and 251oz of gold was
won.

The next five crushings
at Meekatharra produced a
total of 868oz of gold and
the most recent crushing,
last month, produced 237oz
from 100 tons of ore.

All the ore is transported
by trucks to the Meekatharra
State Battery.

The mine now worked
by McDonald's

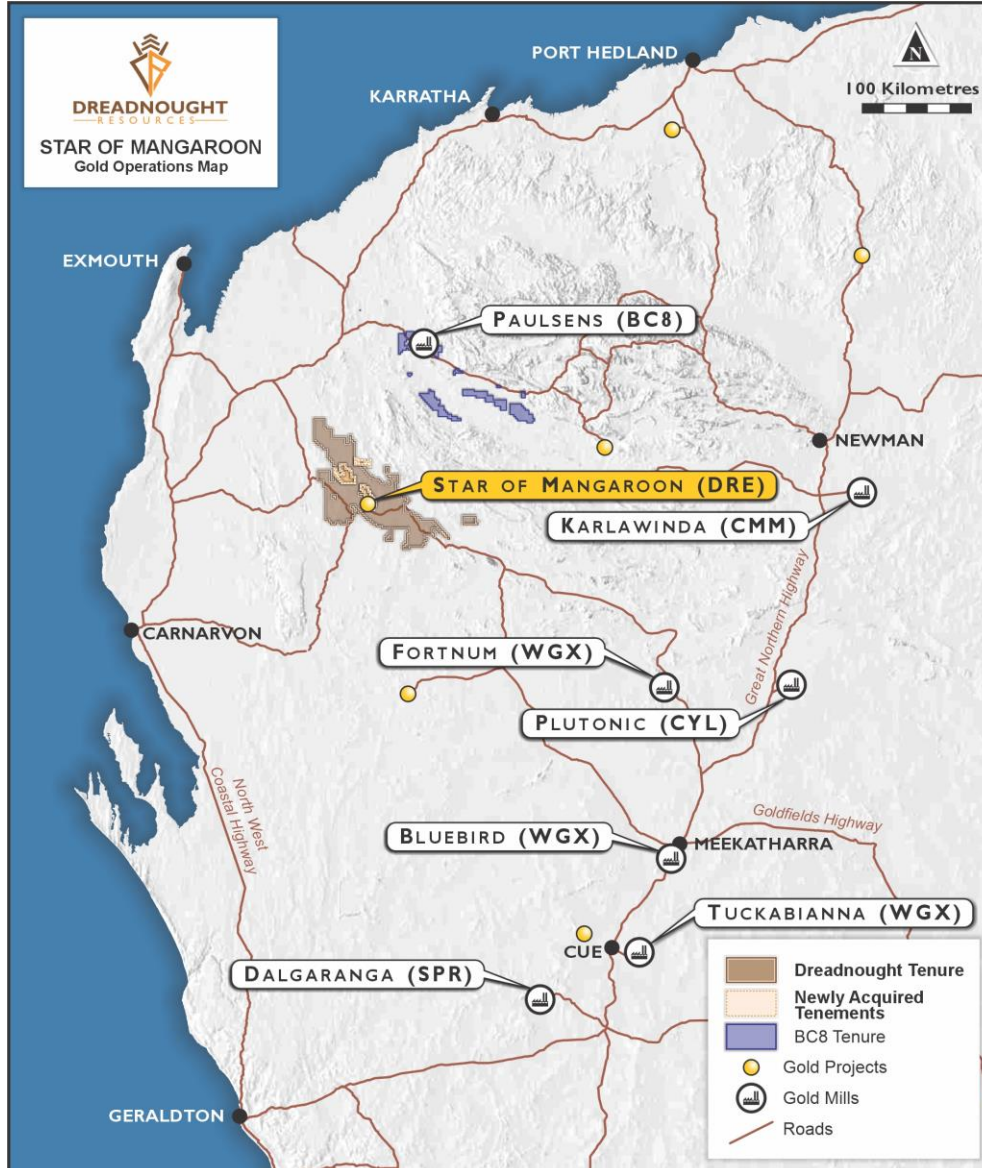


Transform to Self Funded Explorer

**Near term development and
commercialisation at the Star of Mangaroon**



Gold Commercialisation Strategy



Transform into self-funded explorer

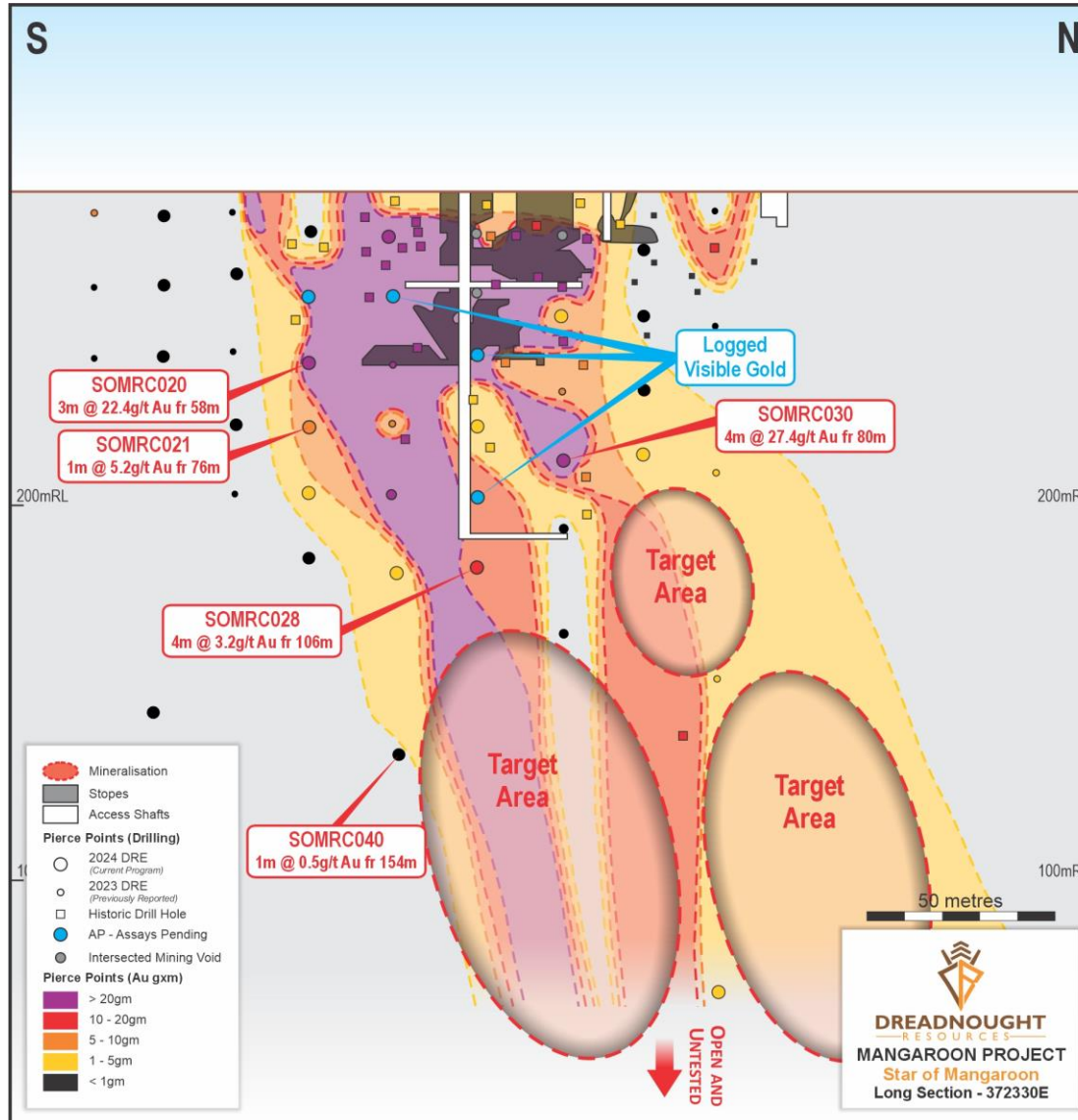
- Star of Mangaroon is a high grade, at surface, opportunity
- Camp scale potential with 5 historical mines and multiple gold workings along structural corridors
- Paulsens mill within trucking distance
 - 300kms by road, same as Vivien (5.7g/t) to Mt Magnet Mill
- Mining tenements already granted, heritage agreements in place, short approval time frame
 - Targeting late 2025 commencement
- Conceptual open pit model looks encouraging
- Outsource funding, development, haulage and processing
 - Common model in WA

Allows DRE to focus on making the next major discovery while being able to commercialise gold along the way.

ASX:DRE 26 July 2024 Consolidation, Growth & Commercialisation



Star of Mangaroon



High-Grade Open Pit Potential

- Discovered and mined by Pastoralists in the 1960s
- Limited exploration in the 1980s/1990s
 - MAI0: 4m @ 26.0g/t Au fr 9m
 - SMC07: 4m @ 18.7 g/t Au fr 8m
- Recent drilling by Dreadnought includes:
 - SOMRC004: 2m @ 59.0 g/t Au fr 16m
 - SOMRC005: 7m @ 23.0 g/t Au fr 53m
 - SOMRC006: 8m @ 15.5 g/t Au fr 89m
 - SOMRC020: 3m @ 23.7g/t Au fr 58m
 - SOMRC030: 4m @ 27.4 g/t Au fr 80m
- Open at depth and along strike

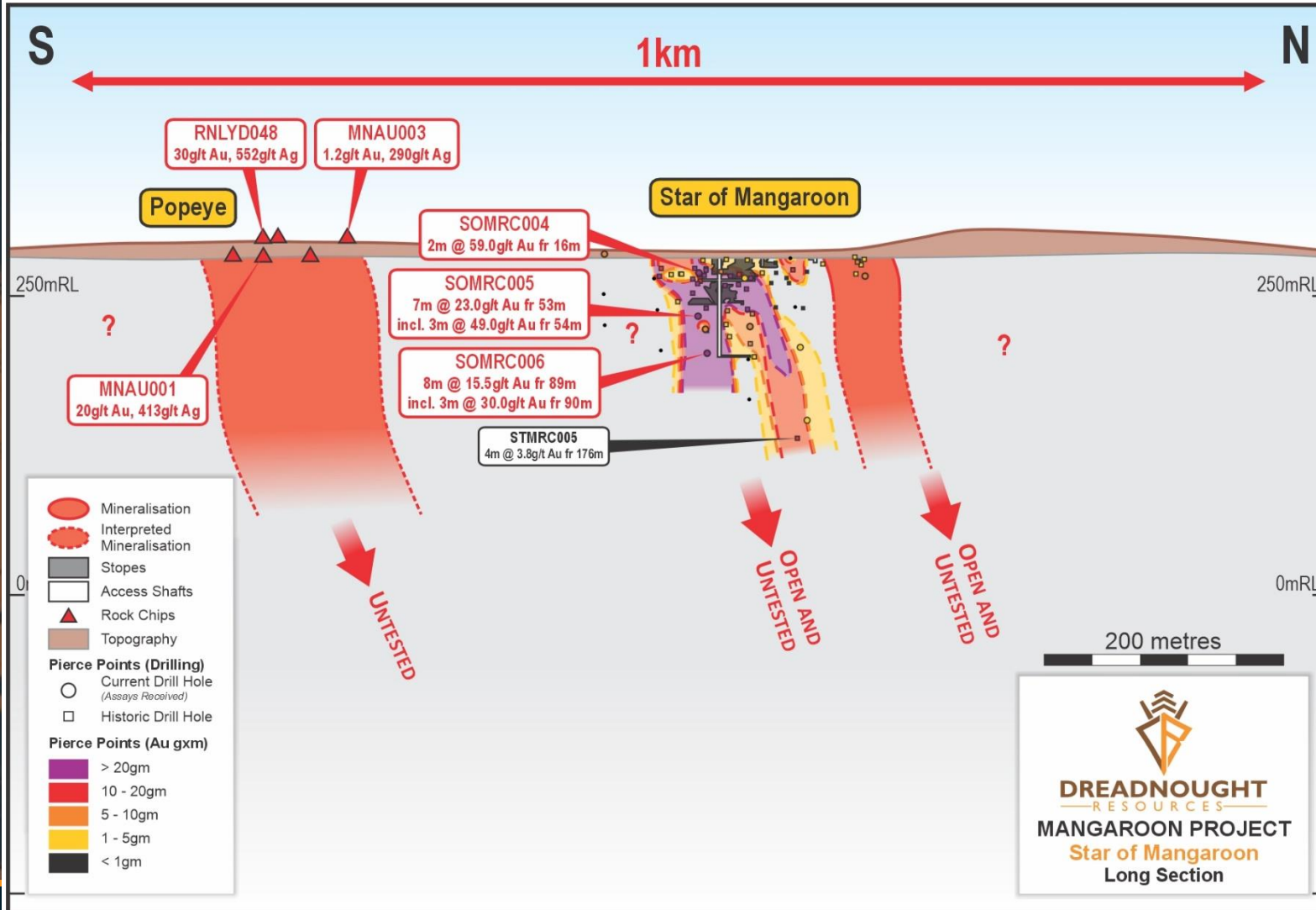
Upcoming Catalysts

- Diamond Drilling Assay Results: November
- Initial Resource: November

ASX:DRE 11 December 2023 Thick, High-Grade Gold Including 7m @ 23.0g/t Au
ASX:DRE 22 January 2024 Star of Mangaroon Extended



Star of Mangaroon – Exploration Upside



Popeye – On the SoM Mining Lease

- No deep drilling, and no drilling along the mineralised trend including at the historically mined Popeye.
- Popeye shaft started as water supply for Star of Mangaroon, went straight down a mineralised vein with rock chips returning:
 - RNLYD048: 30g/t Au, 552g/t Ag
 - MMNAU001: 20g/t Au, 413g/t Ag
- First drilling at Popeye includes:
 - POPRC001: 3m @ 22.8 g/t Au fr 13m

Upcoming Catalysts

- Follow up drilling at Popeye – March 2025

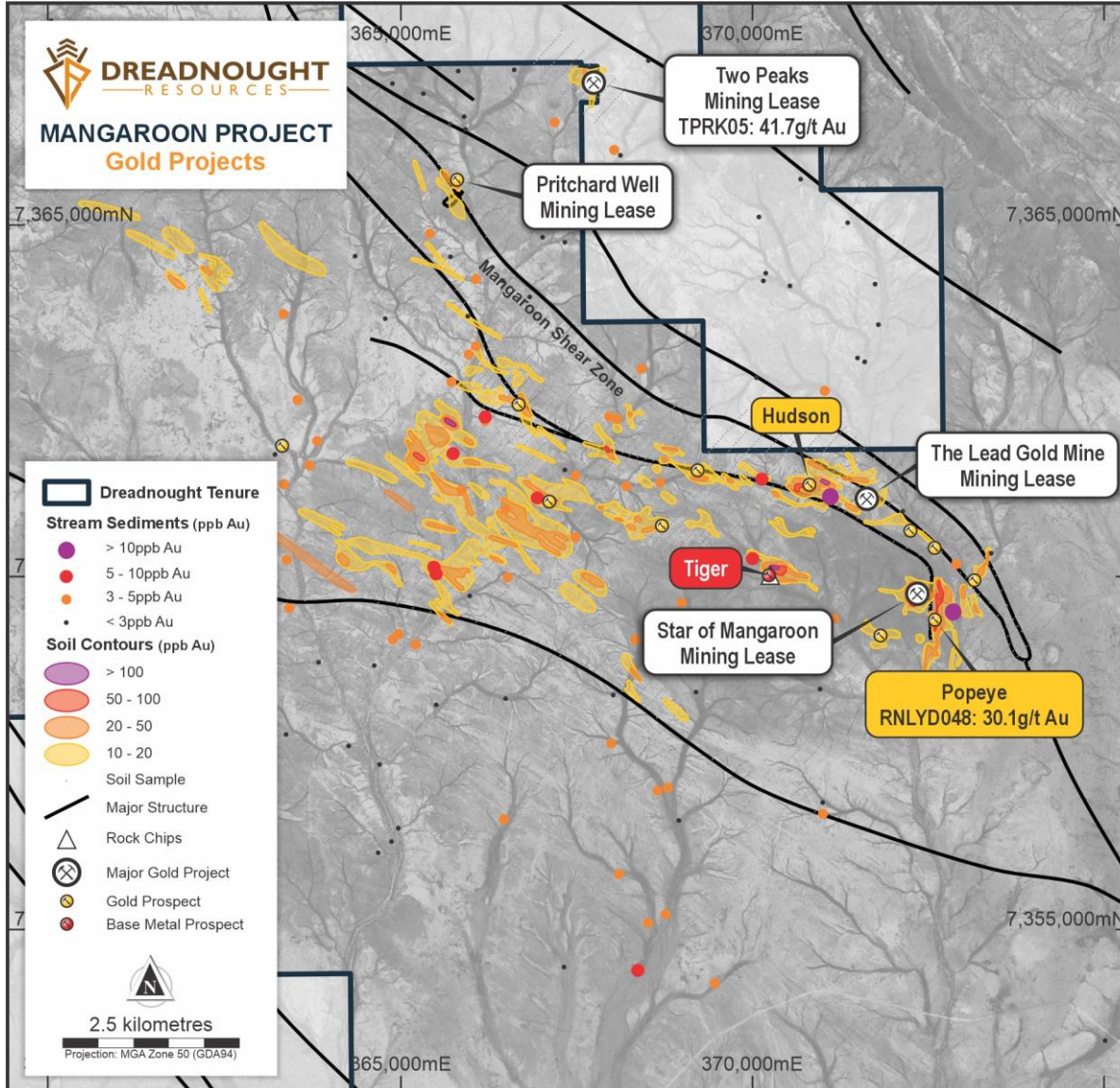
ASX:DRE 11 December 2023 Thick, High-Grade Gold Including 7m @ 23.0g/t Au

ASX:DRE 22 January 2024 Star of Mangaroon Extended

ASX:DRE 1 October 2024 Shallow, High Grades at Star of Mangaroon & Popeye



Historical Workings – Pipeline of Opportunities



Build on Star of Mangaroon Commercialisation

- 5 Granted Mining Leases
 - Represent additional near term production opportunities
- More shafts and workings discovered every month as we explore boots on ground
 - Most with no or limited historical drilling
- Pipeline of walk-up drill targets
- Working closely with prospectors and pastoralists to consolidate the knowledge of the region to help leverage our exploration

Upcoming Catalysts

- Assay Results from Two Peaks, Diamonds, Hudson – November
- RC drilling Pritchard Well and new targets – March 2025
- Mapping, Rock Chipping – Ongoing
 - Reviewing and ranking historical workings and new targets

ASX:DRE 12 February 2024 Star of Mangaroon Camp Scale Gold Prospect Continues to Expand
ASX:DRE 13 March 2024 Star of Mangaroon Camp Scale Gold Prospect Expands to ~15km x 10km



DREADNOUGHT
RESOURCES

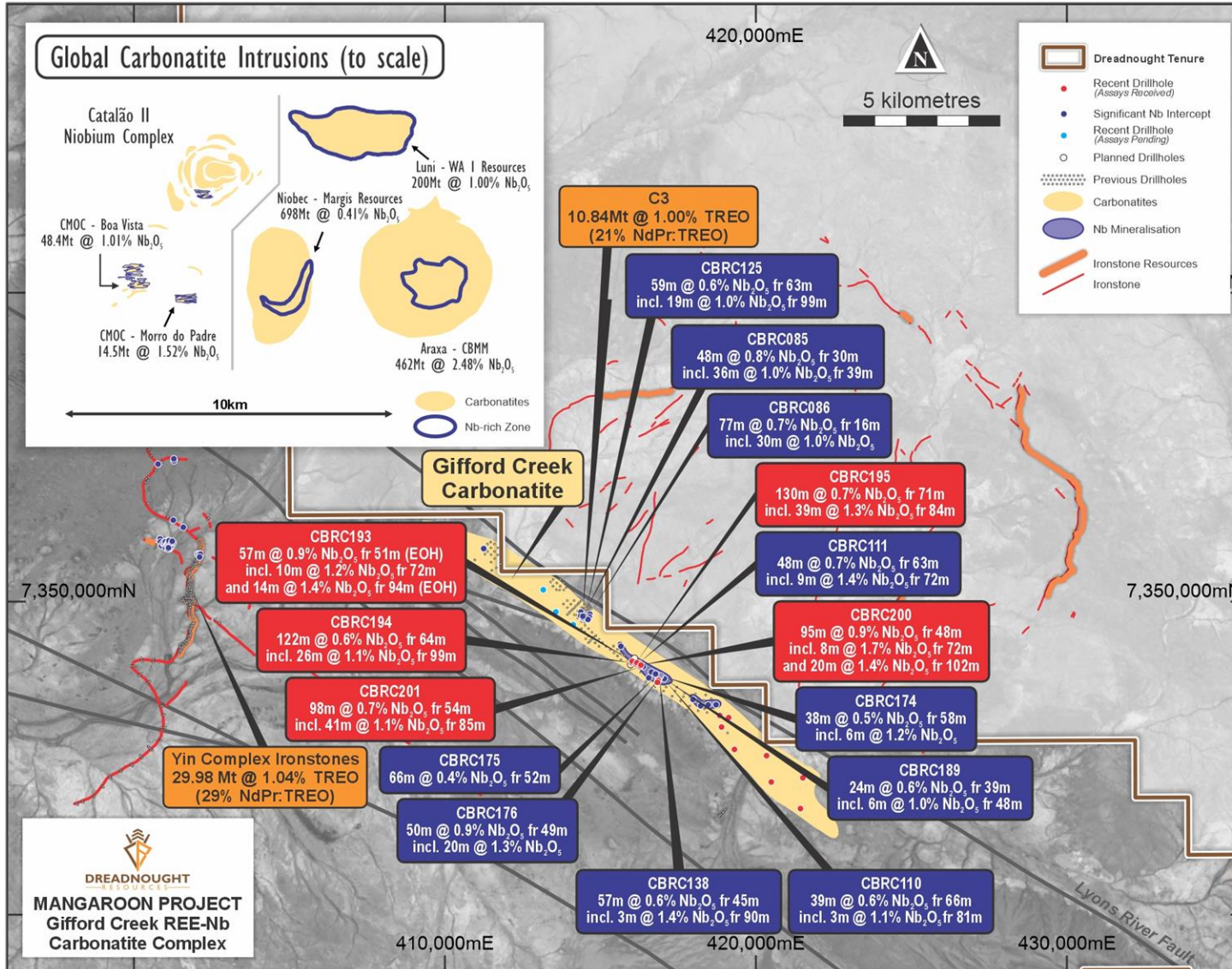
Gifford Creek Carbonatite

Significant Critical Metal (Nb-REE-P-Ti-Sc) Potential
DRE: 100% Ownership

ASX:DRE



Gifford Creek Nb-REE Carbonatite



Proven Niobium Mineralisation

- Best Nb drill intercepts outside the Arunta, closer to existing and shared infrastructure.
- Multiple zones of mineralisation already identified.
- Coarse grained pyrochlore confirmed in drilling – critical for metallurgical recoveries and commercialisation.

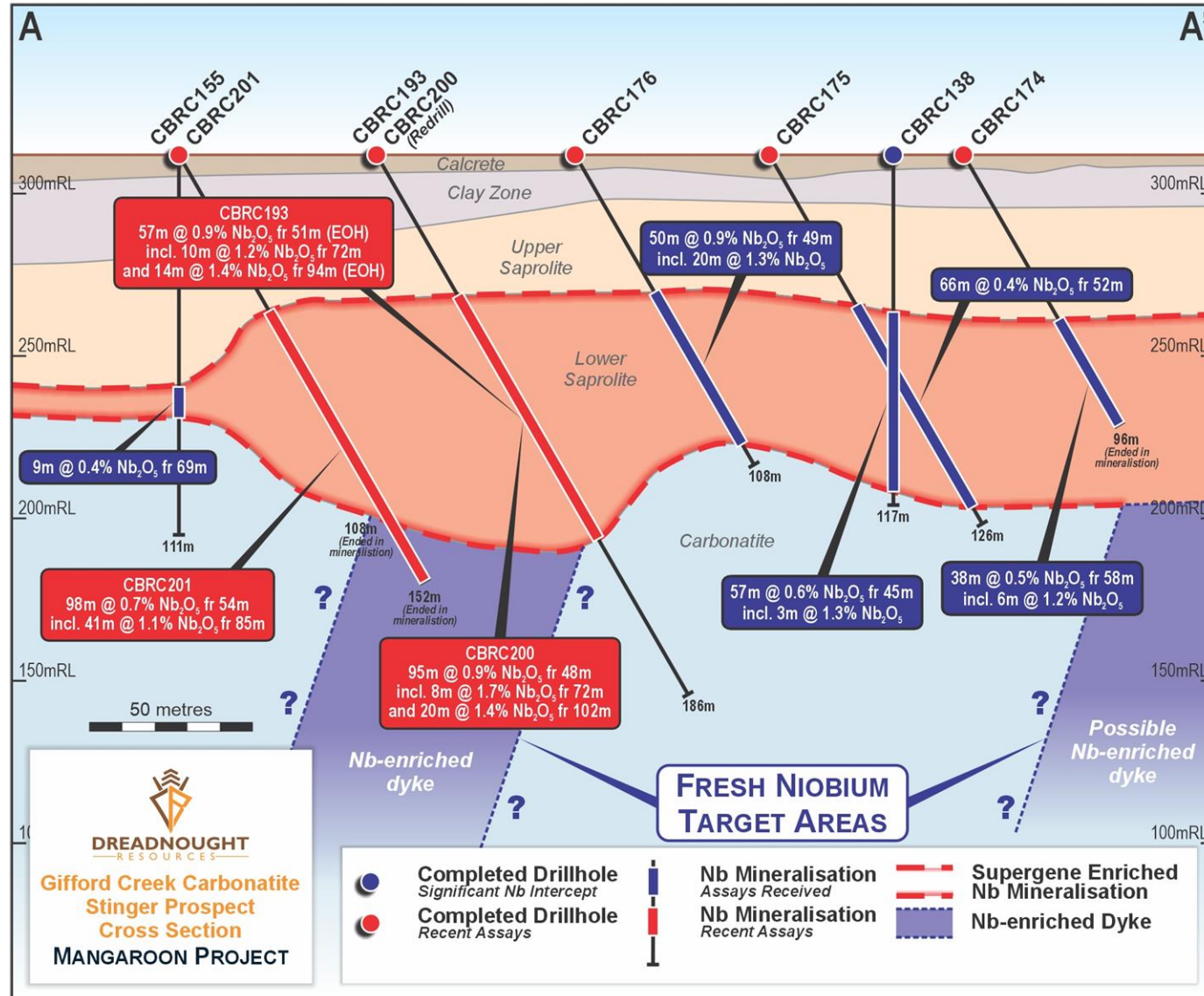
Significant Critical Metal Potential

- The Gifford Creek Carbonatite and associated ironstones is one of the largest carbonatite complexes in the world.
- Wide spaced drilling over ~25% of the ~17km long Gifford Creek Carbonatite has already identified multiple zones of critical metal mineralisation. This makes for a critical mineral mix of co-products.

ASX:DRE 19 August 2024 Thick High-Grade Niobium Intercepts from Gifford Creek Carbonatite



Gifford Creek Nb-REE Carbonatite



Saprolite Mineralisation

- Blanket of thick near surface secondary / residual mineralisation
- Tends to mushroom out from primary mineralisation
 - Target of wide spaced first pass drilling
- Recent drilling intercepts include:
 - CBRC195: 130m @ 0.7% Nb₂O₅ from 71m, including: 39m @ 1.3% Nb₂O₅ from 84m
 - CBRC200: 95m @ 0.9% Nb₂O₅ from 48m, including 20m @ 1.4% Nb₂O₅ from 102m and 8m @ 1.7% Nb₂O₅ from 72m
 - CBRC194: 122m @ 0.6% Nb₂O₅ from 71m, including 26m @ 1.1% Nb₂O₅ from 99m
 - CBRC201: 98m @ 0.7% Nb₂O₅ from 54m, including 41m @ 1.1% Nb₂O₅ from 85m

Fresh Nb Dyke Mineralisation

- Thick carbonatite dykes hosting primary niobium mineralisation

Upcoming Catalysts

- Mineralogical and metallurgical studies
- Exploration Target and Conceptual Economics
- Further drilling either by Dreadnought 100% or through Joint Venture

ASX:DRE 19 August 2024 Thick High-Grade Niobium Intercepts from Gifford Carbonatite



DREADNOUGHT
RESOURCES

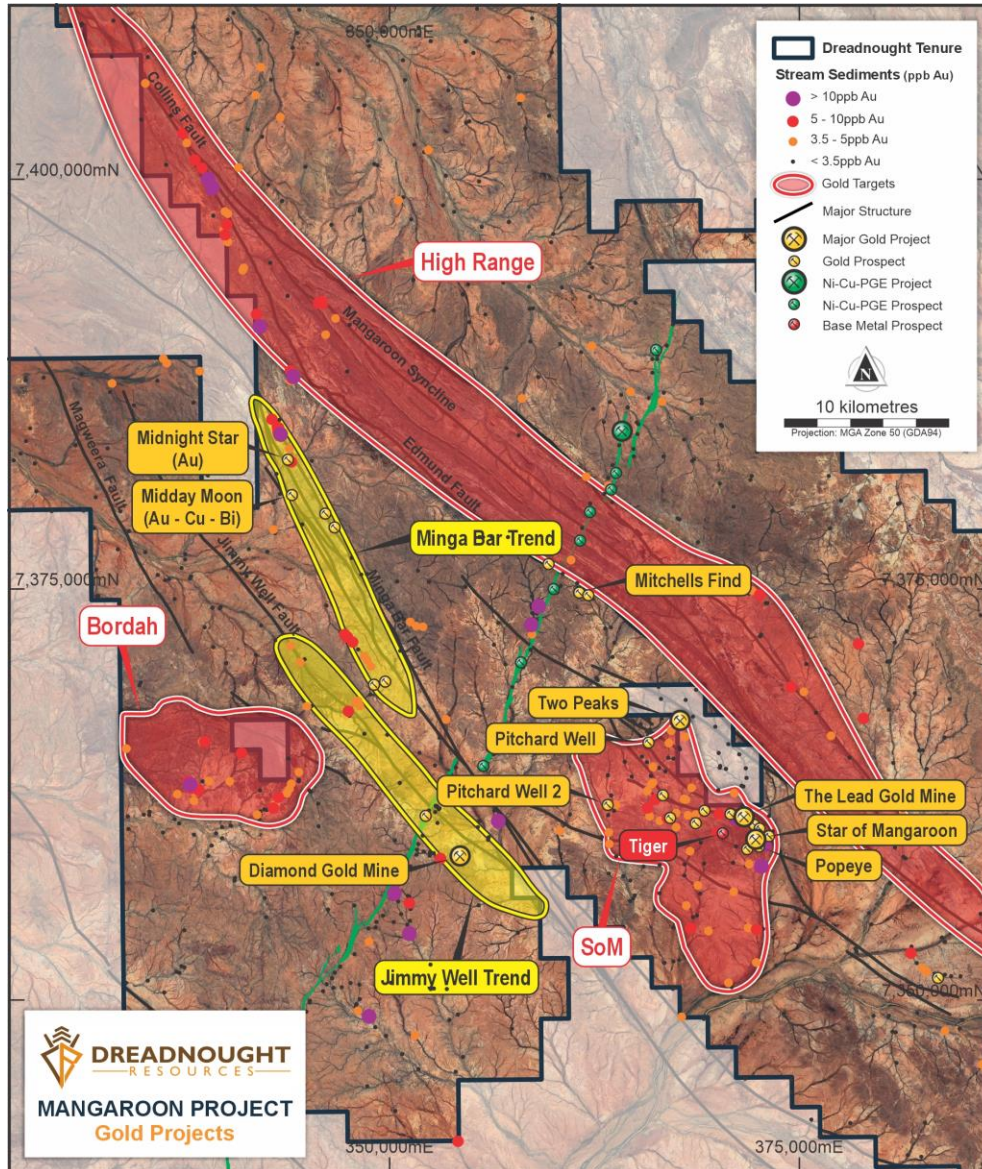
Discovery

Fill the pipeline with targets in an unexplored region

ASX:DRE



First Modern Exploration – Pathway to Discovery



Star of Mangaroon Camp Scale Prospect

- Expanding 15km x 10km camp scale opportunity
- First modern exploration within this consolidated field has already yielded over a dozen new targets including Tiger, which is a stronger and larger anomaly than the Star of Mangaroon

Bordah Camp Scale Prospect

- No previous exploration
- Similar lithostructural setting to Star of Mangaroon
- Stream sediment sampling producing significant anomalies in gold and gold pathfinders

High Range Camp Scale Prospect

- Limited previous gold exploration
- Similar lithostructural setting to the original Cobra/Bangemall Gold Field
- Recently consolidated with strong early indications of gold potential

Upcoming Catalysts

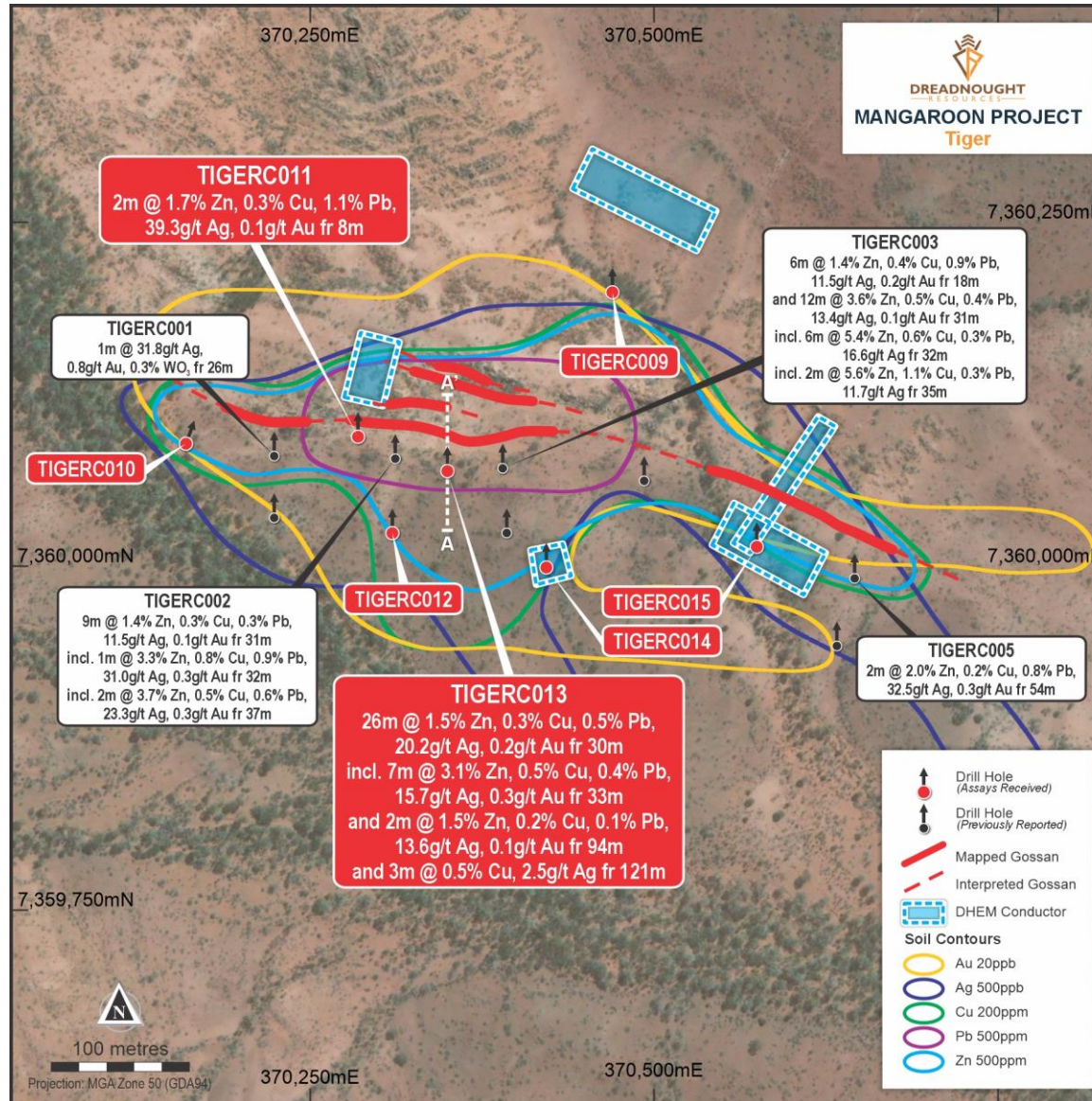
- Target generation Stream sediment sampling – November
- Target definition Soil sampling and mapping – November

ASX:DRE 13 March 2024 Star of Mangaroon Camp Scale Gold Prospect Expands to ~15km x 10km

ASX:DRE 26 July 2024 Strategic & Prospective Consolidation



Tiger Cu-Au-Zn-Ag



Tiger Cu-Au-Zn-Ag VMS

- Identified during first ever surface sampling programs
- 500m strike and high tenor outcropping gossans
- Drilling recently struck significant mineralisation including:
 - TIGERC003: 12m @ 3.6% Zn, 0.5% Cu, 0.4% Pb, 13.4g/t Ag, and 0.1g/t Au fr 31m including 6m @ 5.4% Zn, 0.6% Cu, 0.3% Pb, 16.6g/t Ag from 32m including 2m @ 5.6% Zn, 1.1% Cu, 0.3% Pb, 11.7g/t Ag from 35m
 - TIGERC002: 9m @ 1.4% Zn, 0.3% Cu, 0.3% Pb, 11.5g/t Ag, and 0.1g/t Au fr 31m including 1m @ 3.3% Zn, 0.8% Cu, 0.9% Pb, 31.0g/t Ag, 0.3g/t Au fr 32m and 2m @ 3.7% Zn, 0.5% Cu, 0.6% Pb, 23.3g/t Ag, and 0.3g/t Au fr 37m
 - TIGERC013: 26m @ 1.5% Zn, 0.3% Cu, 0.5% Pb, 20.2g/t Ag, 0.2g/t Au fr 30m including 7m @ 3.1% Zn, 0.5% Cu, 0.4% Pb, 15.7g/t Ag, 0.3g/t Au fr 33m and 2m @ 1.5% Zn, 0.2% Cu, 0.1% Pb, 13.6g/t Ag 0.1g/t Au fr 94m

Upcoming Catalysts

- Airborne EM Survey across region – underway
- Downhole geophysical surveys – early 2025
- Diamond drilling – early 2025

ASX.DRE 18 June 2024 Tiger Cu-Au-Zn-Ag Gossan Confirmed over 500m
ASX.DRE 2 September 2024 Drill Results & 5 off-hole conductors at Tiger
ASX.DRE 29 October 2024 Further Base Metal Mineralisation from Tiger



DREADNOUGHT
RESOURCES



Streamlining the Portfolio

**Commercialisation of portfolio & discovery
funded by third parties**

ASX:DRE



Other Projects

Mangaroon REEs (100%)

- Minimise cost and maximise readiness for REE turnaround
- Resource of 29.98Mt @ 1.04% TREO cover ~10% of ironstones
- Higher NdPr to total rare earth oxides ratio than most REE deposits and >50% higher than the global average

Mangaroon Ni-Cu-PGE (100%)

- Confirmed high-tenor massive sulphide mineralisation within the Money Intrusion
- Advanced discussions for JV

Bresnahan (100%)

- Uranium targets identified by global uranium companies
- Outcropping unconformity HREE, and Au-Sb-Ag mineralisation
- Advanced discussions for partial JV

Tarraji-Yampi (80%/100%)

- Orion Cu-Au Massive Sulphide discovery in 2021
- Outcropping Cu-Au mineralisation
- Strategic review underway

Central Yilgarn (100%)

- Multiple confirms high-grade gold, iron ore and base metal targets
- JV discussions well advanced





Work Plan Summary



	Oct		Nov		Dec-Jan		Feb		Mar
Gold Development Strategy									
- Assays, Resource, Studies									
Gifford Creek Carbonatite									
- Mineralogy, Internal Studies									
Discovery									
- Target Generation and Definition									
Commercialisation									

Major Catalysts and Upcoming News flow

- **November: Results from diamond drilling at the Star of Mangaroon (100%)**
- **November: Results of further target generation and definition work at Mangaroon Au (100%)**
- **November: Results from EIS co-funded IP surveys at Tarraji-Yampi (80%/100%)**
- **November: Results from Au drilling at Mangaroon (100%)**
- **November: Initial Mineral Resource for Star of Mangaroon (100%)**
- **December: Results of further target generation and definition work at Mangaroon Au (100%)**

Take Away Message

Near term high-grade gold commercialisation strategy

- Transform to self-funded explorer

Exposure and leverage to critical metal optionality

Poised to deliver additional discoveries

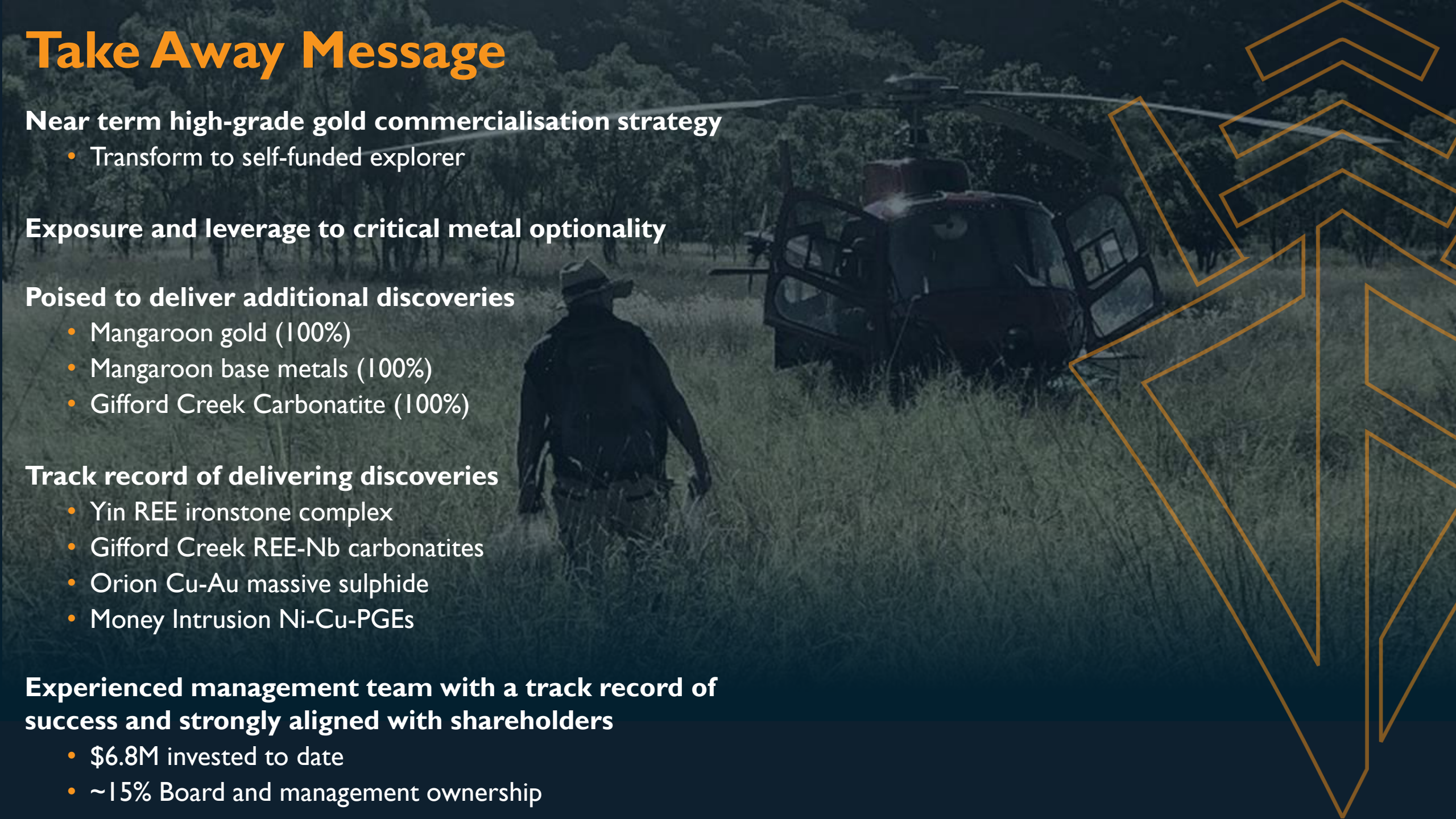
- Mangaroon gold (100%)
- Mangaroon base metals (100%)
- Gifford Creek Carbonatite (100%)

Track record of delivering discoveries

- Yin REE ironstone complex
- Gifford Creek REE-Nb carbonatites
- Orion Cu-Au massive sulphide
- Money Intrusion Ni-Cu-PGEs

Experienced management team with a track record of success and strongly aligned with shareholders

- \$6.8M invested to date
- ~15% Board and management ownership





DREADNOUGHT
— R E S O U R C E S —

Finding the Metals for Our Future

ASX:DRE Dreadnought Resources Ltd

+61 (08) 9473 8345

info@dreres.com.au

Unit 1, 4 Burgay Court, Osborne Park WA 6017

dreadnoughtresources.com.au



Sign up to our Investor Hub
to receive the latest news,
updates and announcements.