

ASX:MTM

11 October 2021

SOIL SAMPLING PROGRAM COMPLETED AT MT MONGER OVER PROSPECTIVE STRUCTURES

Highlights:

- Large soil sampling program completed at Mt Monger Project
- Targeting extensions of known mineralised structures in areas with limited previous exploration
- Results expected in October 2021 and anomalies to be followed up with drilling

The Board of Mt Monger Resources Limited (Mt Monger or the Company) is pleased to provide shareholders with an update on the Company's exploration activities at the Mt Monger Gold Project, where a soil sampling program targeting strike extensions of known mineralised structures has been completed.



Figure 1: Mt Monger's Exploration Manager Antony Zebisch on-site at the Mt Monger Project during the soil sampling program completed in September.

The program comprised a total of approximately 2,340 samples, collected locally on a 200m x 50m grid and a 200m x 100m grid (Figure 2). Samples have been submitted to SGS for analysis using their MMI method.

Sampling has been undertaken over three key areas:

- 1) Duchess of York, where a geophysical interpretation indicates a continuation of the known mineralised structure to the southeast (see *Mt Monger ASX announcement dated 13 September 2021*);
- 2) The Red Dale North Prospect in the northwest of the Project area; and
- 3) Over the structure that hosts gold mineralisation at the Kiaki Soaks Prospect, in the east part of the Project area.

In all of these prospective areas, a review of historical information indicates that effective exploration has not been completed. Accordingly, any priority surficial gold anomalies identified by the sampling will be followed-up with drill testing.

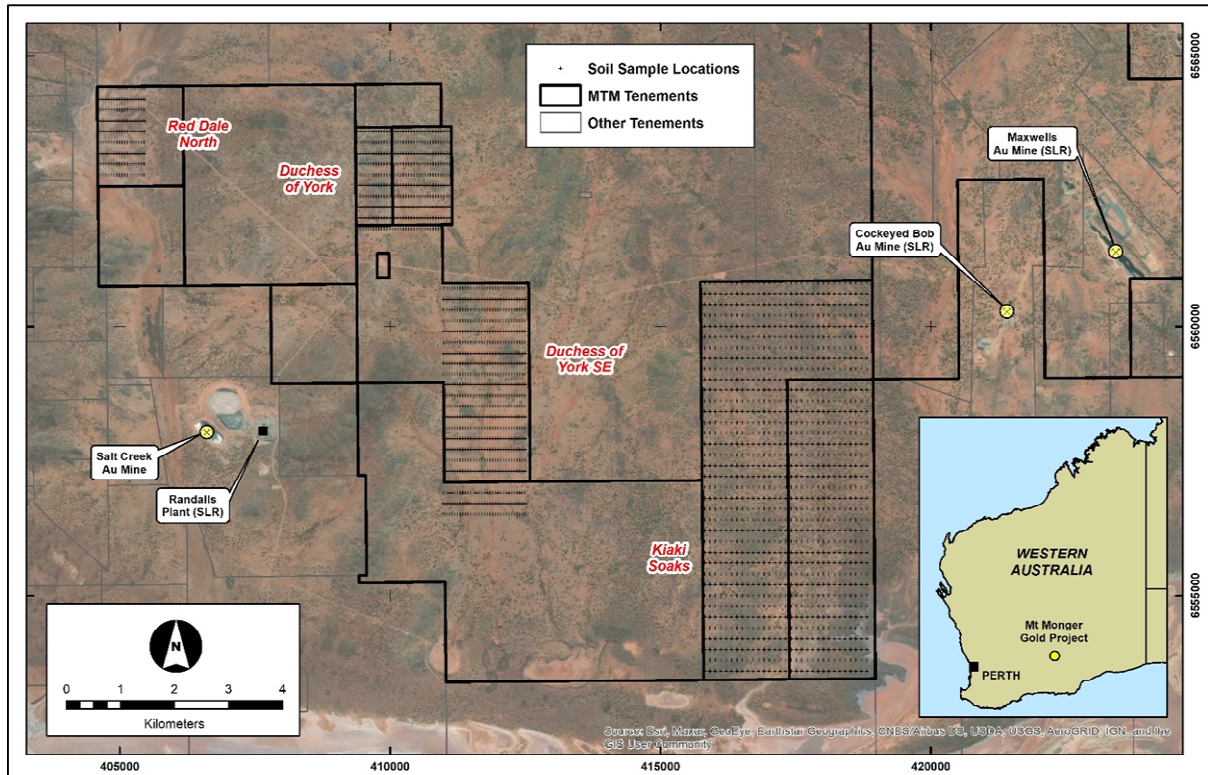


Figure 2: Soil sample locations at the Mt Monger Project.

Results from the sampling program are expected later in October 2021, whereupon the Company will undertake a detailed interpretation and commence drill targeting of significant geochemical anomalies.

This announcement is authorised for release on behalf the Board by Mr Lachlan Reynolds, Managing Director.

For further information, please contact:

Lachlan Reynolds
Managing Director
Mt Monger Resources Limited

Tel: +61 (0)8 6444 1788

Email: lachlan@mtmongerresources.com.au

Simon Adams
Company Secretary

Mt Monger Resources Limited

Tel: +61 (0)8 6444 1788

Email: simon@mtmongerresources.com.au

Competent Person's Statement

The information in this report that relates to Exploration Results is based on and fairly represents information compiled by Mr Lachlan Reynolds. Mr Reynolds is the Managing Director of Mt Monger Resources Limited and is a member of both the Australasian Institute of Mining and Metallurgy and the Australasian Institute of Geoscientists. Mr Reynolds has sufficient experience of relevance to the styles of mineralisation and types of deposits under consideration, and to the activities undertaken to qualify as a Competent Person as defined in the 2012 Edition of the Joint Ore Reserves Committee (JORC) Australasian Code for Reporting of Exploration Results, Mineral Resources and Ore Reserves. Mr Reynolds consents to the inclusion in this report of the matters based on information in the form and context in which they appear.

Previous Disclosure

The information in this presentation is based on the Mt Monger Resources Limited Prospectus and the following ASX announcements, which are available from the Mt Monger Resources Limited website www.mtmongerresources.com.au and the ASX website www.asx.com.au.

- 13 September 2021 "Exploration Program Update"

The Company confirms that it is not aware of any new information or data that materially affects the information included in the original Prospectus or market announcement and that all material assumptions and technical parameters underpinning the Prospectus and relevant market announcement continue to apply and have not materially changed. The Company confirms that the form and context in which the Competent Person's findings are represented have not been materially modified from the original market announcement.

Cautionary Statement Regarding Values & Forward-Looking Information

The figures, valuations, forecasts, estimates, opinions and projections contained herein involve elements of subjective judgment and analysis and assumption. Mt Monger Resources does not accept any liability in relation to any such matters, or to inform the Recipient of any matter arising or coming to the company's notice after the date of this document which may affect any matter referred to herein. Any opinions expressed in this material are subject to change without notice, including as a result of using different assumptions and criteria. This document may contain forward-looking statements. Forward-looking statements are often, but not always, identified by the use of words such as "seek", "anticipate", "believe", "plan", "expect", and "intend" and statements that an event or result "may", "will", "should", "could", or "might" occur or be achieved and other similar expressions. Forward-looking information is subject to business, legal and economic risks and uncertainties and other factors that could cause actual results to differ materially from those contained in forward-looking statements. Such factors include, among other things, risks relating to property interests, the global economic climate, commodity prices, sovereign and legal risks, and environmental risks. Forward-looking statements are based upon estimates and opinions at the date the statements are made. Mt Monger Resources undertakes no obligation to update these forward-looking statements for events or circumstances that occur subsequent to such dates or to update or keep current any of the information contained herein. The Recipient should not place undue reliance upon forward-looking statements. Any estimates or projections as to events that may occur in the future (including projections of revenue, expense, net income and performance) are based upon the best judgment of Mt Monger Resources from information available as of the date of this document. There is no guarantee that any of these estimates or projections will be achieved. Actual results will vary from the projections and such variations may be material. Nothing contained herein is, or shall be relied upon as, a promise or representation as to the past or future. Mt Monger Resources, its affiliates, directors, employees and/or agents expressly disclaim any and all liability relating or resulting from the use of all or any part of this document or any of the information contained herein.