



## ASX ANNOUNCEMENT

3<sup>rd</sup> November 2020



### Completion of soil sampling program at Midas Cu-Au Project, Paterson Province

#### HIGHLIGHTS

- ❖ The Company has completed a detailed geochemical sampling program across the Midas Cu-Au Project, Paterson Province
- ❖ The sampling program focussed on 5 of the 7 priority target areas identified by earlier studies, including the Coolbro Creek prospect
- ❖ 502 samples were collected over a multi-week program, with samples despatched to ALS Laboratories Perth for assaying
- ❖ The Midas Cu-Au Projects has been subject to limited and sporadic field activities; however, they have both shown presence of gold mineralisation and host favourable geological units

White Cliff Minerals Limited (**White Cliff** or the **Company**) is pleased to advise shareholders that it has completed the maiden geochemical sampling program at the Midas Cu-Au Project, that encapsulates Table Top and Coolbro Creek (E45/5107), within the Paterson Province, Western Australia. During the multi-week program, 502 samples were taken across 5 of 7 priority target areas identified by the Company (refer announcement 17 June 2020 for additional information). Samples have been despatched to ALS Laboratories in Perth in two batches, for multi-element assaying, with results expected in coming weeks.

#### Commenting on the completion of the sampling program, White Cliff's Technical Director, Edward Mead said:

*"We are pleased to have completed the extensive geochemical soil sampling program across the Company's 100% owned Midas Cu/Au project in the Paterson Province. We feel these tenements are highly-prospective, yet underexplored. Our previous detailed technical review highlighted 21 prospective targets across the two tenements, with the 7 priority targets the focus of this sampling program. Due to logistical challenges, 5 of these targets were sampled during the program."*

*"The upcoming results of the sampling program will help define a maiden drilling program to be undertaken by the Company. We look forward to advancing the Midas Project in conjunction with the planned exploration at the Company's recently acquired Reedy South Gold project near Cue, Western Australia."*

ASX:WCN

[wcminerals.com.au](http://wcminerals.com.au)

**White Cliff Minerals Limited**  
ABN 22 126 299 125

Level 8, 99 St Georges Tce, Perth WA 6000  
PO Box 5638 St Georges Tce, Perth WA 6831

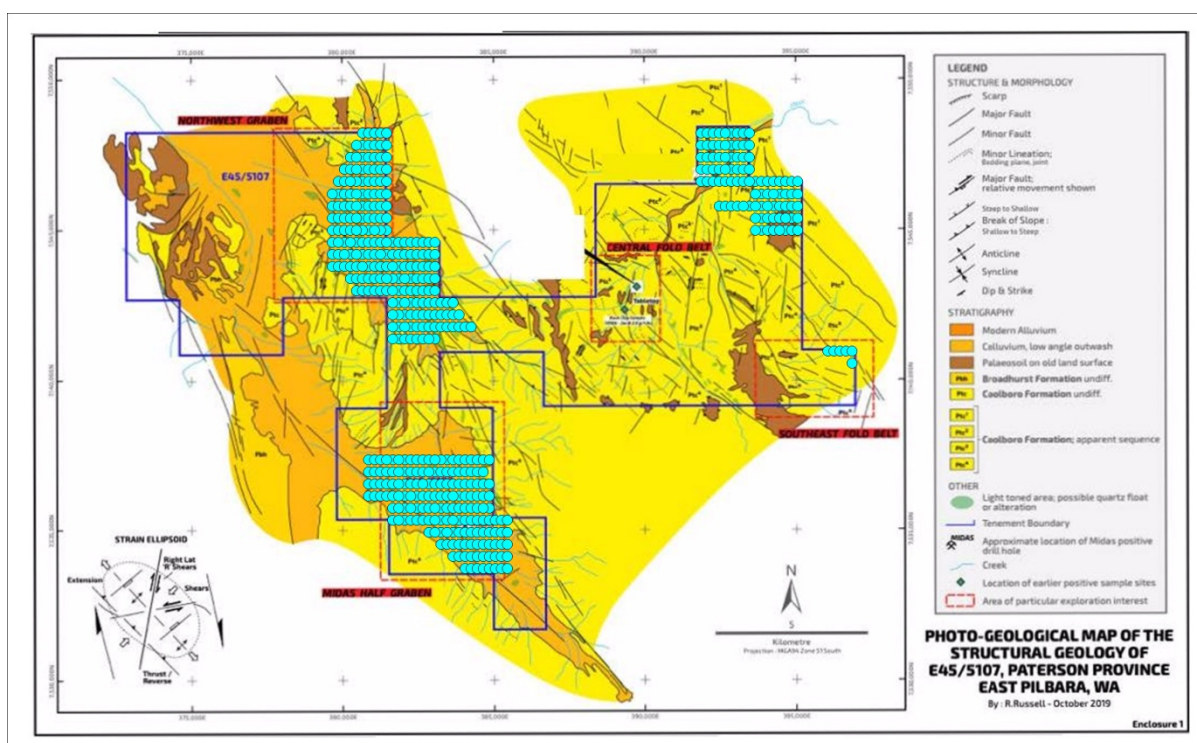
**T** + 61 8 9486 4036  
**F** + 61 8 9486 4799

## Geochemical Sampling Program

The maiden geochemical sampling program was carried out by XM Logistics under the guidance of the Company's exploration geologist, Ross Cameron. The program consisted of 502 samples spaced 200 metres apart on 400 metre spaced EW lines for approximately 105-line km of sampling, using a combination of ionic leach and conventional soil sampling, depending on the local geology. All samples have been despatched to ALS Laboratories in Perth for multi-element assay. The sampling program covered priority target areas across E45/5107 (refer **Figures 1** and **2**).

The remoteness of the area, coupled with harsh terrain, excluded sampling over the Central (which includes the Table Top prospect) and Southeast Fold Belts. Results from the samples that could safely be collected are expected in the coming weeks. However, given the considerable amount of exploration activities being undertaken by junior explorers, one to two-week delays with assay turnaround times can be expected.

Results, when they are received will be used to design a maiden drilling program to be undertaken.



**Figure 1:** Grid sampling locations over priority targets, including the Coolbro Creek prospect at E45/5107, Midas Cu Au Project, Paterson Province

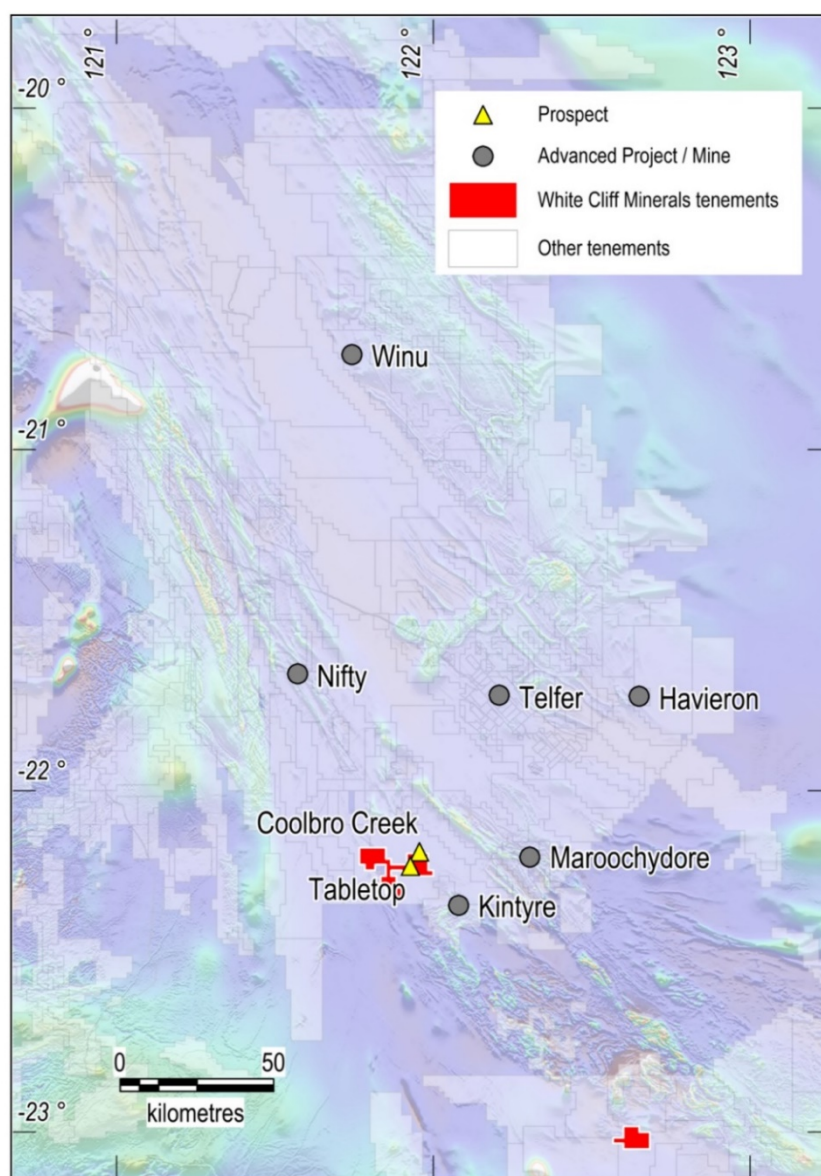
## Project Overview

The Paterson Province comprises a Paleoproterozoic basement of Rudall Complex metamorphic rocks overlain by Neoproterozoic sediments of the Yeneena and northwestern Officer Basins, and Paleozoic Canning Basin sediments to the northeast. The province hosts several world-class deposits: Telfer gold-copper mine, Nifty copper mine and Kintyre uranium deposit. The recent Winu and Havieron discoveries are being considered as intrusion-related copper-gold

mineralisation hosted in buried Yeneena Basin sediments on the Anketell Shelf. They are located proximal to major NW to NNW-trending faults.

Information available on the mineralisation indicates it is dense, magnetic, conductive and potentially chargeable, making it a good target for geophysical exploration, particularly given that mineralisation underlies Canning Basin sediments and is blind to surface.

The Midas Cu Au Projects are located on major granite dome structures, have highly prospective fault structures, and in the case of E45/5107 have significant historical stream sediment sampling programs completed by CRA Exploration in the 80s, with follow up rock-chip sampling reported in WAMEX reports. Historical drilling by CRA Exploration at the Table Top prospect (E45/5107) intersected **2.9g/t Au** over 2m.



**Figure 2:** Midas Cu Au Project location (E45/5107 and E45/5112) to significant projects in the Paterson Province overlying the regional airborne RTP magnetics.

This announcement has been approved by the Board of White Cliff Minerals Limited.

**Further Information:**

Dan Smith  
Director  
+61 8 9486 4036

[info@wcminerals.com.au](mailto:info@wcminerals.com.au)

Nicholas Ong  
Director & Company Secretary  
+61 8 9486 4036

**Competent Persons Statement**

The Information in this report that relates to exploration results, mineral resources or ore reserves is based on information compiled by Mr Edward Mead, who is a Member of the Australian Institute of Mining and Metallurgy. Mr Mead is a director of the company. Mr Mead has sufficient experience which is relevant to the style of mineralisation and type of deposits under consideration and to the activity that he is undertaking to qualify as a Competent Person as defined in the 2012 edition of the 'Australian Code for Reporting Exploration Results, Mineral Resources and Ore Reserves' (the JORC Code). Mr Mead consents to the inclusion of this information in the form and context in which it appears in this report.