



NEXUSMINERALS

Investor Presentation February 2018

DISCLAIMER & COMPETENT PERSONS STATEMENT

• This document contains forward looking statements. Forward looking statements are not based on historical facts, but are based on Nexus's current expectations of future results or events. These forward looking statements are subject to risks, uncertainties and assumptions which could cause actual results or events to differ materially from the expectations described in such forward looking statements. While Nexus believes that the expectations reflected in the forward looking statements in this document are reasonable, no assurance can be given that such expectations will prove to be correct. Matters as yet not known to Nexus or not currently considered material by Nexus, may cause actual results or events to be materially different from those expressed, implied or projected in any forward looking statements. Any forward looking statement contained in this document is qualified by this cautionary statement.

• The information contained in this presentation is for informational purposes only and does not constitute an offer to issue, or arrange to issue, securities or other financial products. The information contained in this presentation is not investment or financial product advice and is not intended to be used as the basis for making an investment decision. The presentation has been prepared without taking into account the investment objectives, financial situation or particular needs of any particular person.

• No representation or warranty, express or implied, is made as to the fairness, accuracy, completeness or correctness of the information, opinions and conclusions contained in this presentation. To the maximum extent permitted by law, none of Nexus Minerals Limited, its directors, employees or agents, nor any other person accepts any liability, including, without limitation, any liability arising out of fault of negligence, for any loss arising from the use of the information contained in this presentation. In particular, no representation or warranty, express or implied is given as to the accuracy, completeness or correctness, likelihood of achievement or reasonableness or any forecasts, prospects or returns contained in this presentation nor is any obligation assumed to update such information. Such forecasts, prospects or returns are by their nature subject to significant uncertainties and contingencies.

• Before making an investment decision, you should consider, with or without the assistance of a financial adviser, whether an investment is appropriate in light of your particular investment needs, objectives and financial circumstances. Past performance is no guarantee of future performance.

• The distribution of this document in jurisdictions outside Australia may be restricted by law. Any recipient of this document outside Australia must seek advice on and observe any such restrictions.

• In particular, this presentation does not constitute an offer to sell, or a solicitation of an offer to buy, securities in the United States or to any "U.S. person" (as defined in Regulation S under the U.S. Securities Act of 1933, as amended ("Securities Act")). The securities referred to in this presentation have not been and will not be registered under the Securities Act or under the securities laws of any state in the United States. Securities may not be offered or sold in the United States or to, or for the account or benefit of, any U.S. person, unless the securities have been registered under the Securities Act or an exemption from registration is available.

• The information in this report that relates to Exploration Results, Mineral Resources or Ore Reserves is based on information compiled or reviewed by Mr Andy Tudor, who is a Member of The Australasian Institute of Mining and Metallurgy and the Australian Institute of Geoscientists. Mr Tudor is a full time employee of Nexus Minerals Limited.

• Mr Tudor has sufficient experience which is relevant to the style of mineralisation and type of deposit under consideration and to the activity which he is undertaking to qualify as a Competent Person as defined in the 2012 Edition of the 'Australasian Code for Reporting of Exploration Results, Mineral Resources and Ore Reserves'.

• The exploration results are available to be viewed on the Company website www.nexus-minerals.com. The Company confirms it is not aware of any new information that materially affects the information included in the original announcement. The Company confirms that the form and context in which the Competent Person's findings are present have not been materially modified from the original announcements of 3/5/2016, 5/5/2016, 8/6/2016, 6/7/2016, 18/7/2016, 25/7/2016, 9/9/2016, 13/10/2016, 17/10/2016, 7/2/2017, 30/3/2017, 20/6/2017, 28/7/2017, 12/9/2017, 4/10/2017, 18/10/2017, 24/10/2017, 8/11/2017, 28/11/2018, 17/1/2018, 23/1/2018 and 25/1/2018.

• Mr Tudor consents to the inclusion in the report of the matters based on his information in the form and context in which it appears.

• No Ore Reserves have currently been defined on the Pinnacles JV Gold Project, nor the Wallbrook Gold Project. There has been insufficient exploration and technical studies to estimate an Ore Reserve and it is uncertain if further exploration and/or technical studies will result in the estimation of an Ore Reserve. The potential for the development of a mining operation and sale of ore from the Pinnacles JV Gold Project or the Wallbrook Gold Project has yet to be established.

Nexus Minerals Limited	ASX: NXM FWB: YAK
Shares	83.1 million
Share Price (31/1/2018)	AUD \$0.10
Market Cap (31/1/2018)	AUD \$8.3million
Cash (31/12/2017)	AUD \$4.5million
Shareholders	800
Top 20	49.90%

BOARD AND MANAGEMENT	
Chairman	Mr Paul Boyatzis
Managing Director	Mr Andy Tudor
Non - Executive Director	Dr Mark Elliott
Non - Executive Director	Mr Bruce Maluish
Company Secretary	Mr Phil MacLeod

COMPANY SNAPSHOT

COMMODITY **GOLD**

STATUS **EXPLORATION**

LOCATION **KALGOORLIE GOLDFIELDS**

WESTERN AUSTRALIA

➤ **JV with SARACEN GOLD MINES (ASX:SAR)**

➤ **PROSPECTIVE REGIONAL TENEMENT PACKAGE**

☐ **Pinnacles Gold Project**

☐ **Wallbrook Gold Project**

➤ **PROFESSIONAL TEAM**

☐ **GOLD EXPLORATION FOCUS**

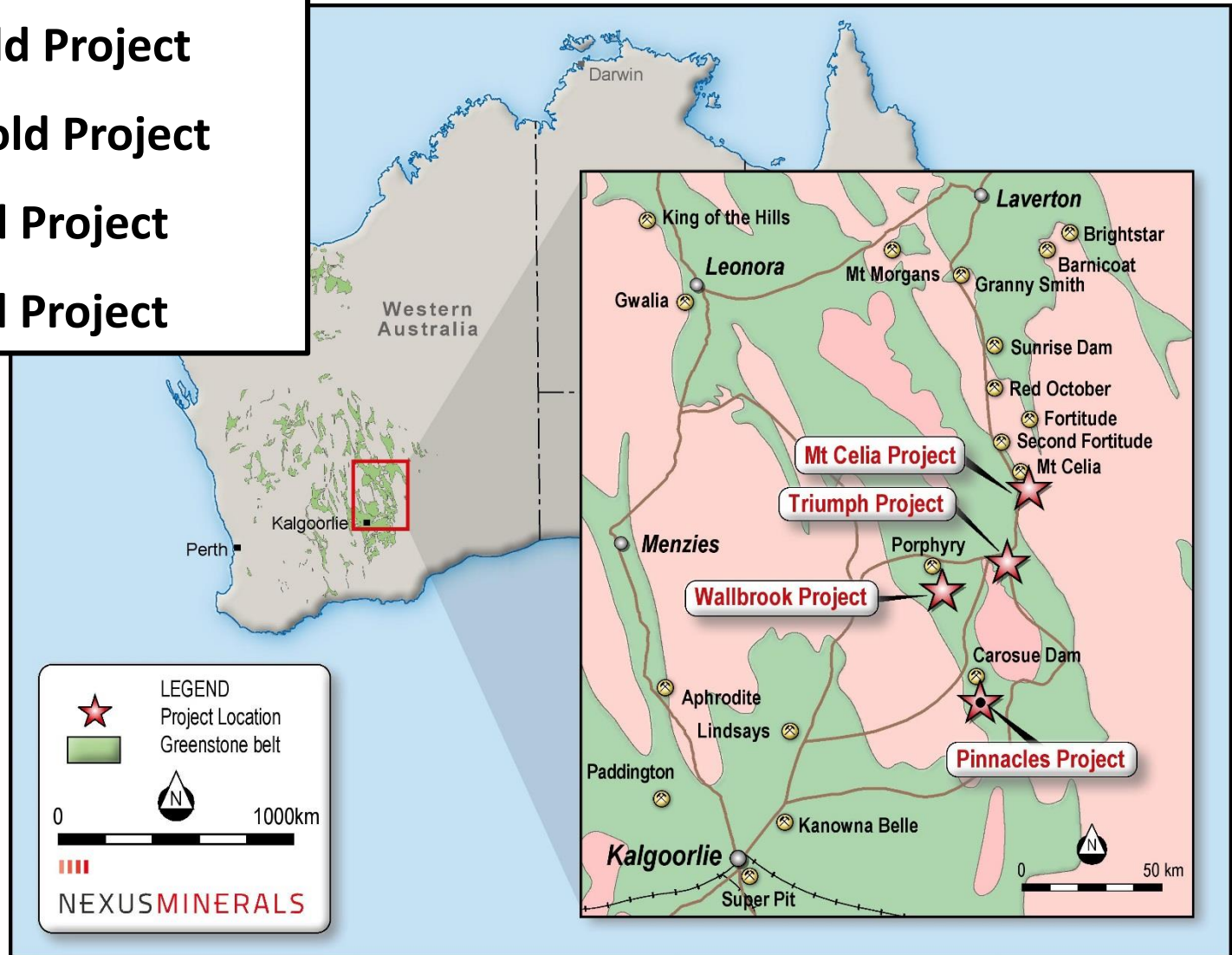
☐ **DEVELOPMENT EXPERIENCE**

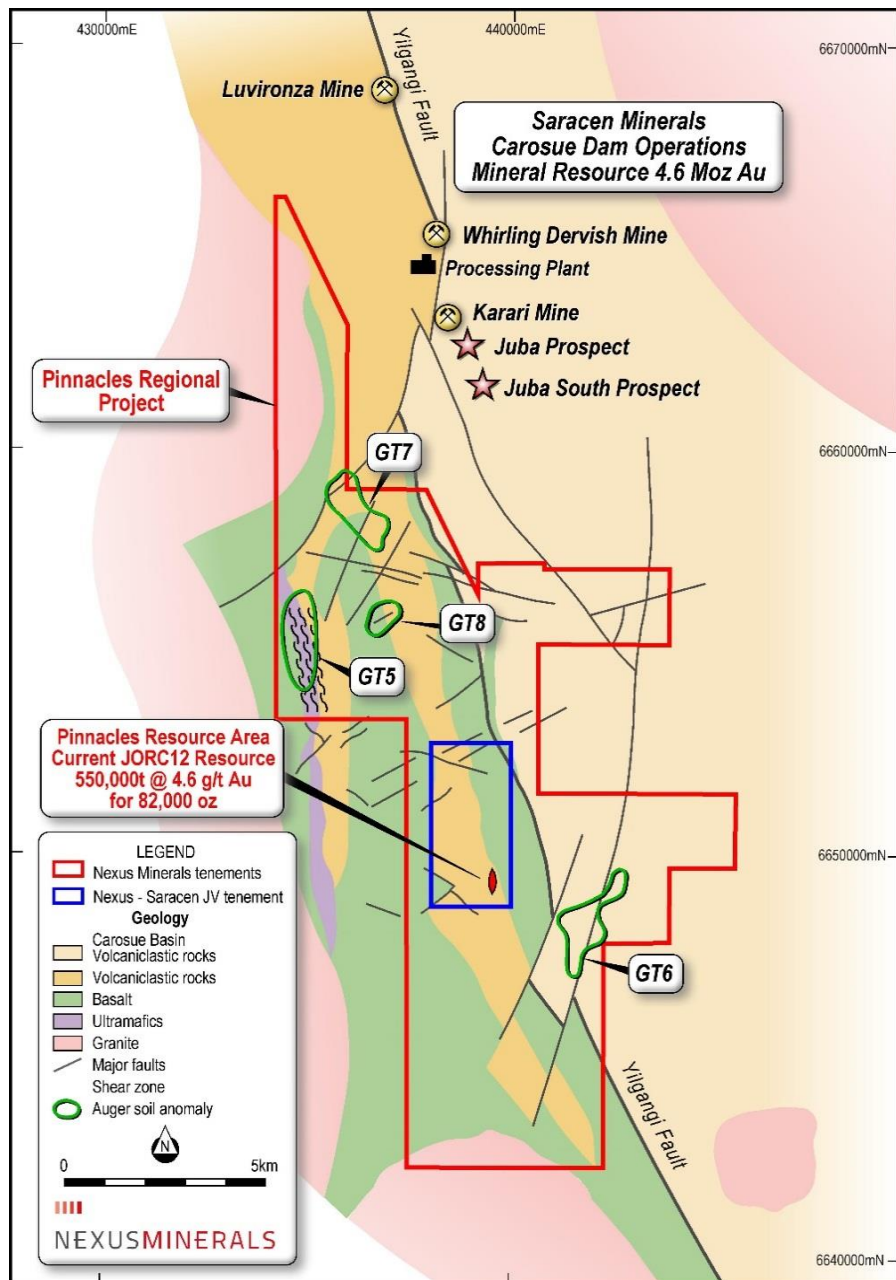
➤ **AQUISITION OF SCALABLE PROJECTS**



Goldfields Western Australia

- Pinnacles Gold Project
- Wallbrook Gold Project
- Mt Celia Gold Project
- Triumph Gold Project





Geology

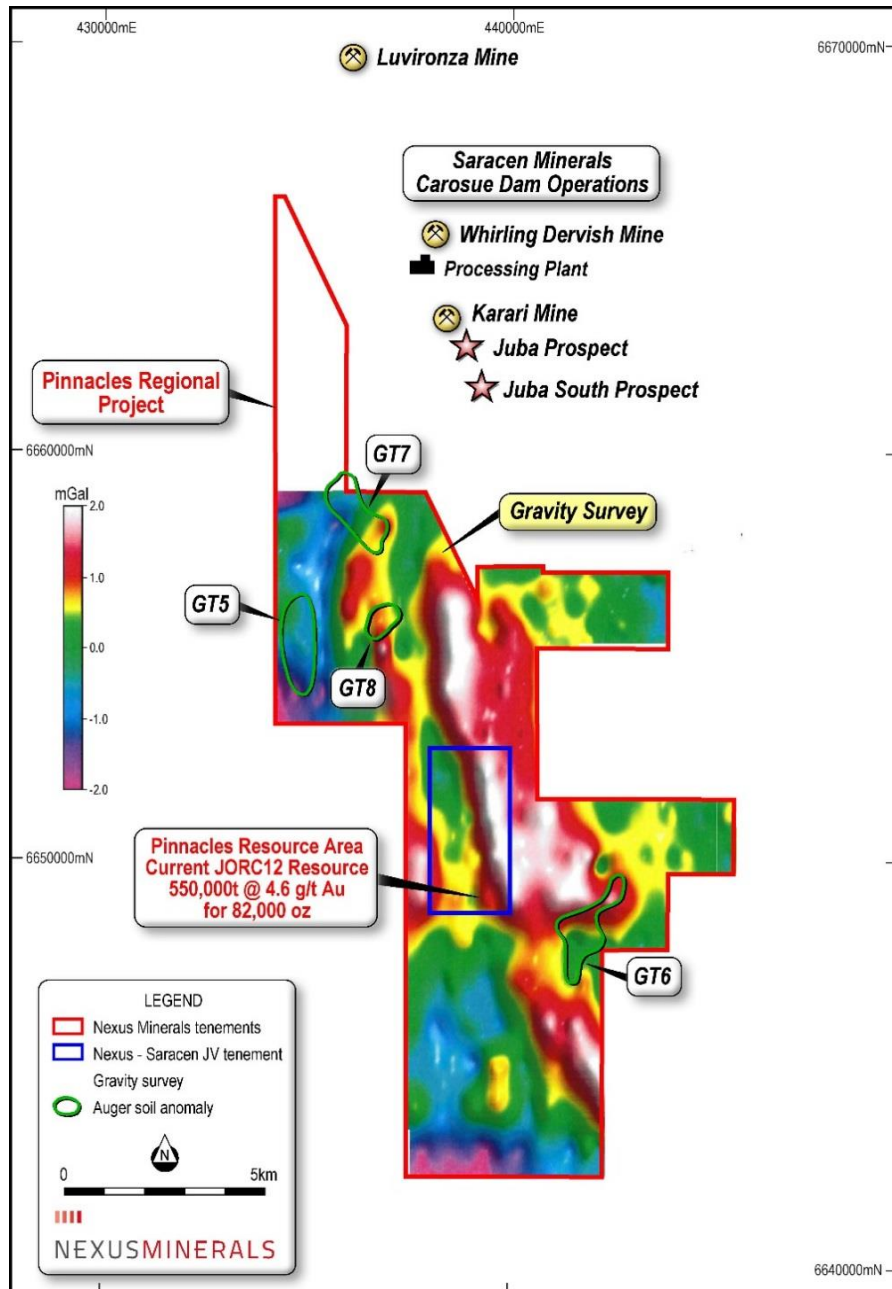
- 125km² North-south trending Archaean greenstone sequence
- East of the Yilgarni Fault Carosue Basin sediments dominate
- West of the Yilgarni Fault a more mafic dominated package is observed consisting of volcanoclastic sediments intercalated with basalt and ultramafic rock units.

Structure

- The region is cut by the Yilgarni Fault – deep mantle tapping structure. A series of faults with offsets of tens to hundreds of metres cross cut the Yilgarni Fault
- These cross cutting faults are particularly common in the Carosue Dam region as the greenstone belt passes through a relatively narrow “neck” between two large granitoids
- The Yilgarni Fault is a major feature that dissects the Nexus tenement package for a strike distance of some 15km.
- Numerous cross cutting faults are also evident from Geological Mapping, Gravity & Aeromagnetic interpretation

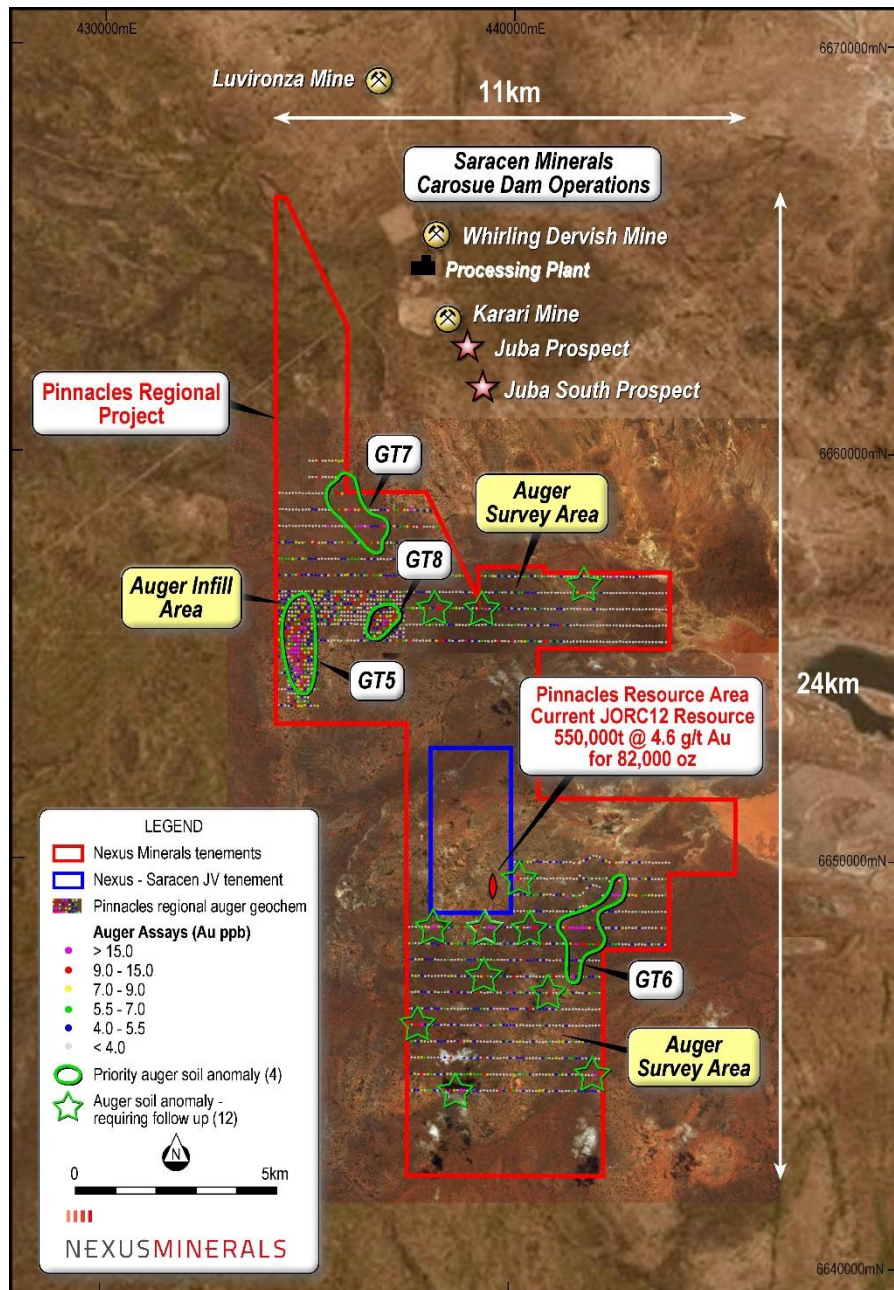
Mineralisation

- Mineralisation is known to occur proximal to, and both east and west of the Yilgarni Fault
- Saracen Minerals Carosue Dam mineral resource of 1.97Moz gold - immediately to the north of Nexus tenement holding - is concentrated in this geological setting



Gravity Survey

- Nexus completed Gravity survey March 2017
- Saracen have utilised Gravity surveys to define the prospective corridor of volcanoclastic sediments that host the Carosue Dam gold deposits - immediately to the north of the Nexus project
- Nexus Gravity survey has successfully identified regional stratigraphy
- Volcanoclastic sediments identified in the east and west of the project area (Gravity low)
- Basalt unit identified through the “spine” of the project (Gravity high) that is also coincident with the Yilgangi Fault zone
- Numerous structural off-sets cross-cutting the Yilgangi Fault have been interpreted from this Gravity data
- These structural off-sets have been targeted by Nexus in the initial regional auger soil geochemical program – as gold mineralisation is often concentrated in these structural corridors

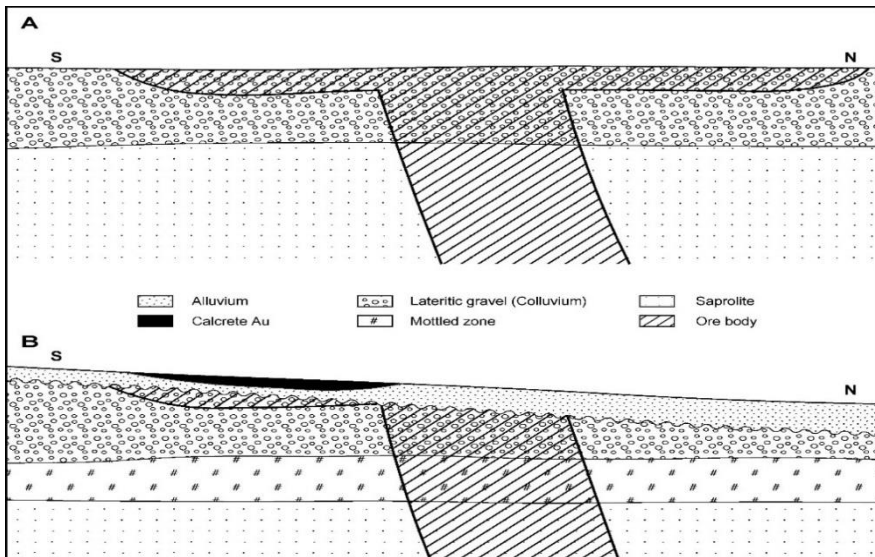


Intrusion Related Gold Systems - Features

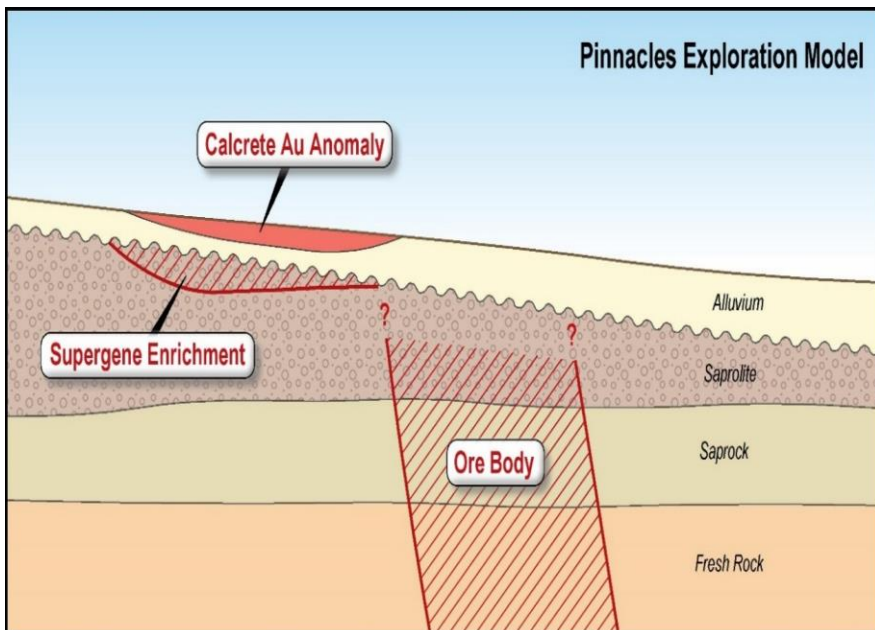
- Granitoid Association
- Gold with elevated Bi-Te-Mo-As-W +/-Sb
- Low base metal concentrations Ag-Pb-Zn

Nexus Auger Soil Geochemical Survey Work completed in 2017

- 50% of tenement area sampled
50% of tenement area remains to be sampled
- 2232 shallow auger soil samples (<3m)
- Results define 16 gold anomalies
- High Priority Au + Pathfinder elements
 - GT5 Au (+ Bi-Te-Mo) 1.9km x 300m
 - GT6 Au (+ As-W) 2.0km x 600m
 - GT8 Au (+ As-Sb-Mo) 800m x 500m
- Medium Priority Au + Pathfinder elements
 - GT7 Au (+ As-Bi-Sb-Te) 1.5km x 800m
- 12 Anomalies requiring follow up work



Karari & Whirling Dervish proposed origin of surface gold anomaly

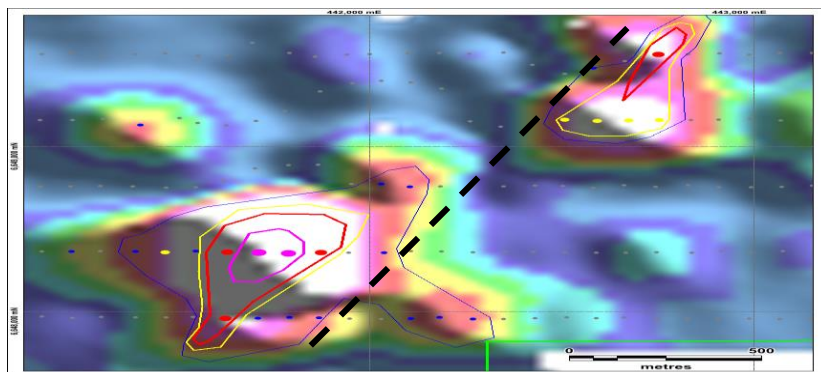
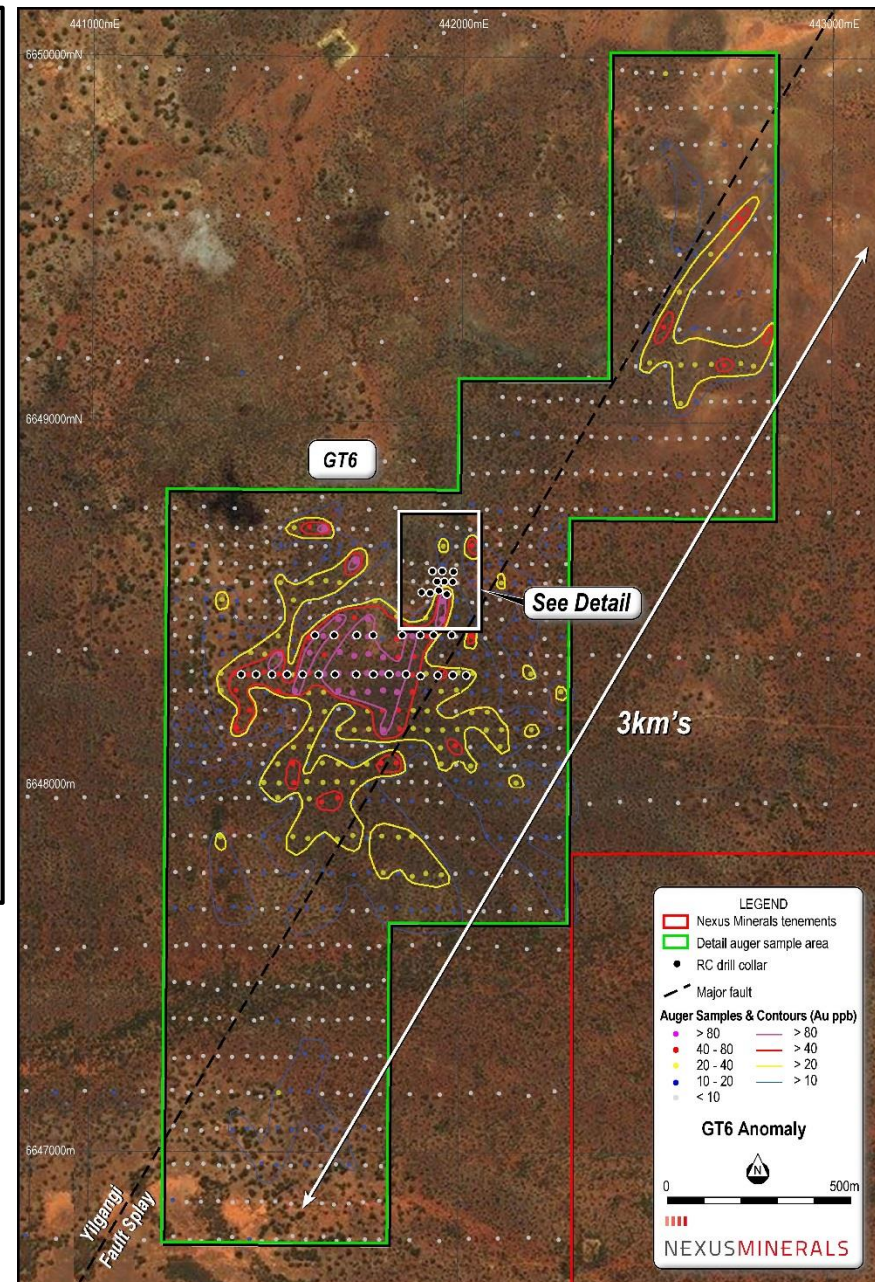


Exploration Model

- Project Area 10km south of, and along strike from, Saracens 1.97 million ounce Karari and Whirling Dervish gold mines (Carosue Dam)
- These Carosue Dam Gold Deposits exhibit:
 - *Surface calcareous gold in soil anomalies*
 - *Main ore body offset by 100's of metres*
 - *Volcaniclastic sediment hosted*
 - *Mineralisation associated with quartz-hematite alteration*
 - *Located on NE/SW fault splay off the Yilgarni Fault*
 - *Position over a gravity low*
 - *"Discovery hole" 12m @ 2.05g/t Au*
- Nexus Exploration Model targeting same features

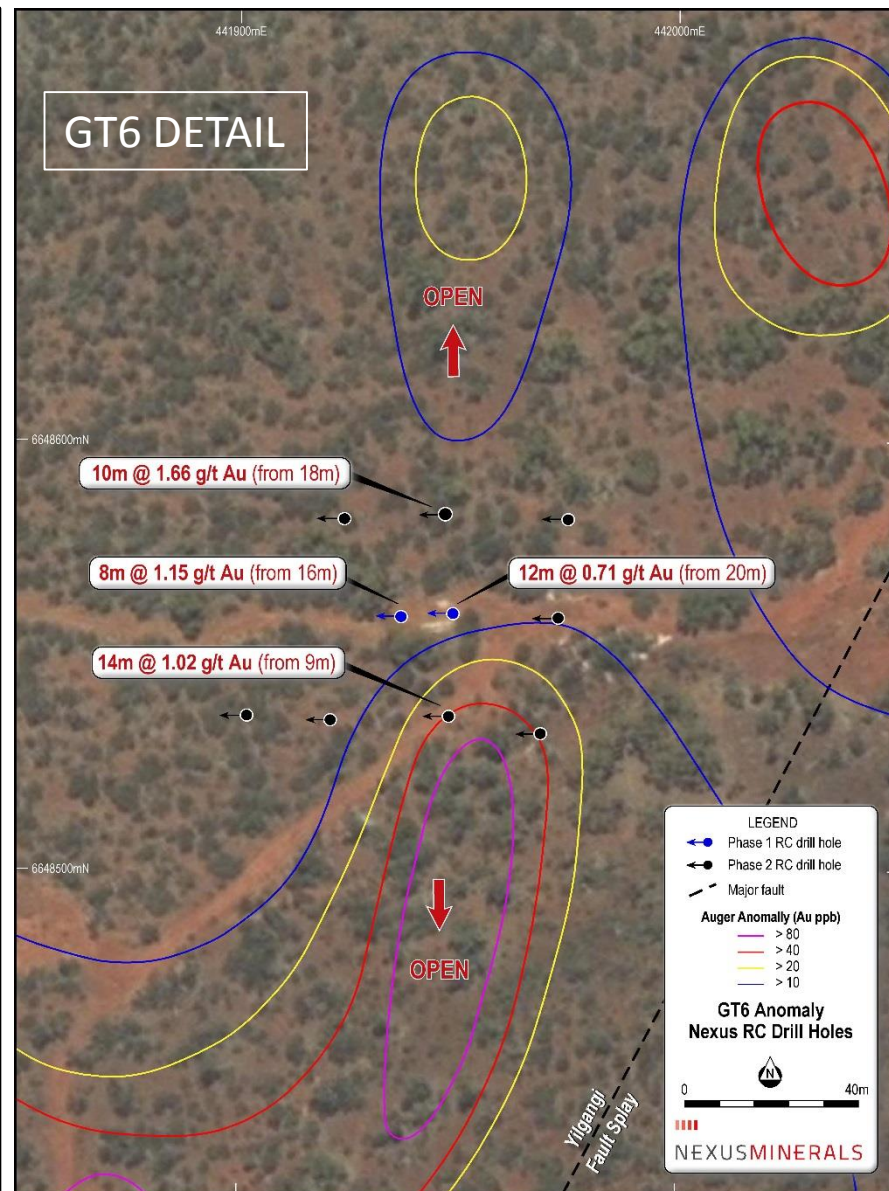
PINNACLES REGIONAL GOLD PROJECT – ANOMALY GT6

- Anomalous Au (>9ppb Au) defined over 3.0km x 600m
- Core of multiple elevated results Au max 619ppb
- Au pathfinder elements As and W confirm the anomaly
- Major NE/SW fault splay off the Yilgarni Fault
- GT6 anomaly exhibits “Carosue Dam Corridor” style Au features
 - *Elevated gold and pathfinder geochemistry*
 - *Hosted in volcanoclastic sediments*
 - *Located on NE/SW fault splay off the Yilgarni Fault*
 - *Positioned over a gravity low*
- Detailed Auger soil geochemical survey (50m x 40m) completed. Targets defined and initial RC Drill programs completed late 2017

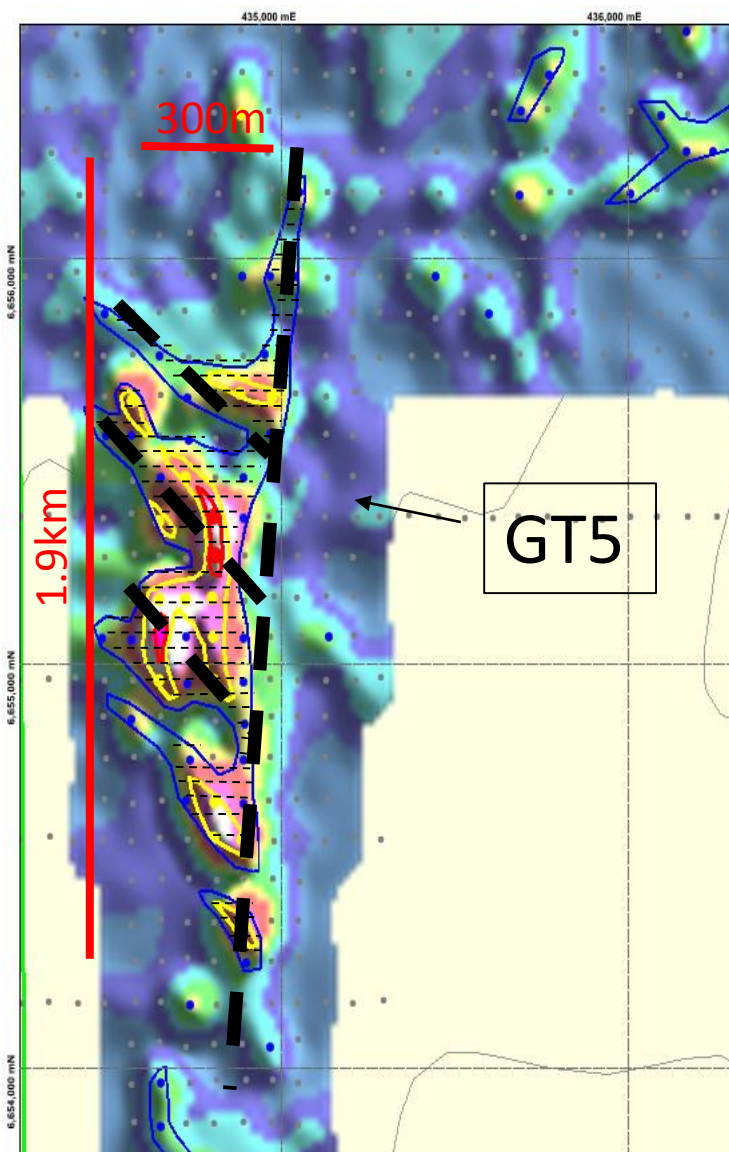


PINNACLES REGIONAL GOLD PROJECT – ANOMALY GT6

- RC drill targets defined & First Pass drilling completed 2017
- 6 holes return wide anomalous gold intersections incl:
 - ❑ 21m @ 0.88g/t Au, incl 10m @ 1.66g/t Au (from 18m)
 - ❑ 22m @ 0.78g/t Au, incl 14m @ 1.02g/t Au (from 9m)
- Holes display “Karari Gold Mine like” analogous shallow geological features incl:
 - ❑ Wide zones of elevated gold grades (0.1-0.5g/t Au)
 - ❑ Elevated quartz-hematite abundance directly related to higher gold grades
 - ❑ Weathered volcanoclastic sediment lithology
 - ❑ Mineralisation hosted within regional gravity low
 - ❑ Mineralisation hosted adjacent to major regional structure
- Drilling to date has tested a fraction of the 3km x 600m anomalous gold corridor
- Targeted exploration programs planned for 2018



PINNACLES REGIONAL GOLD PROJECT – ANOMALY GT5

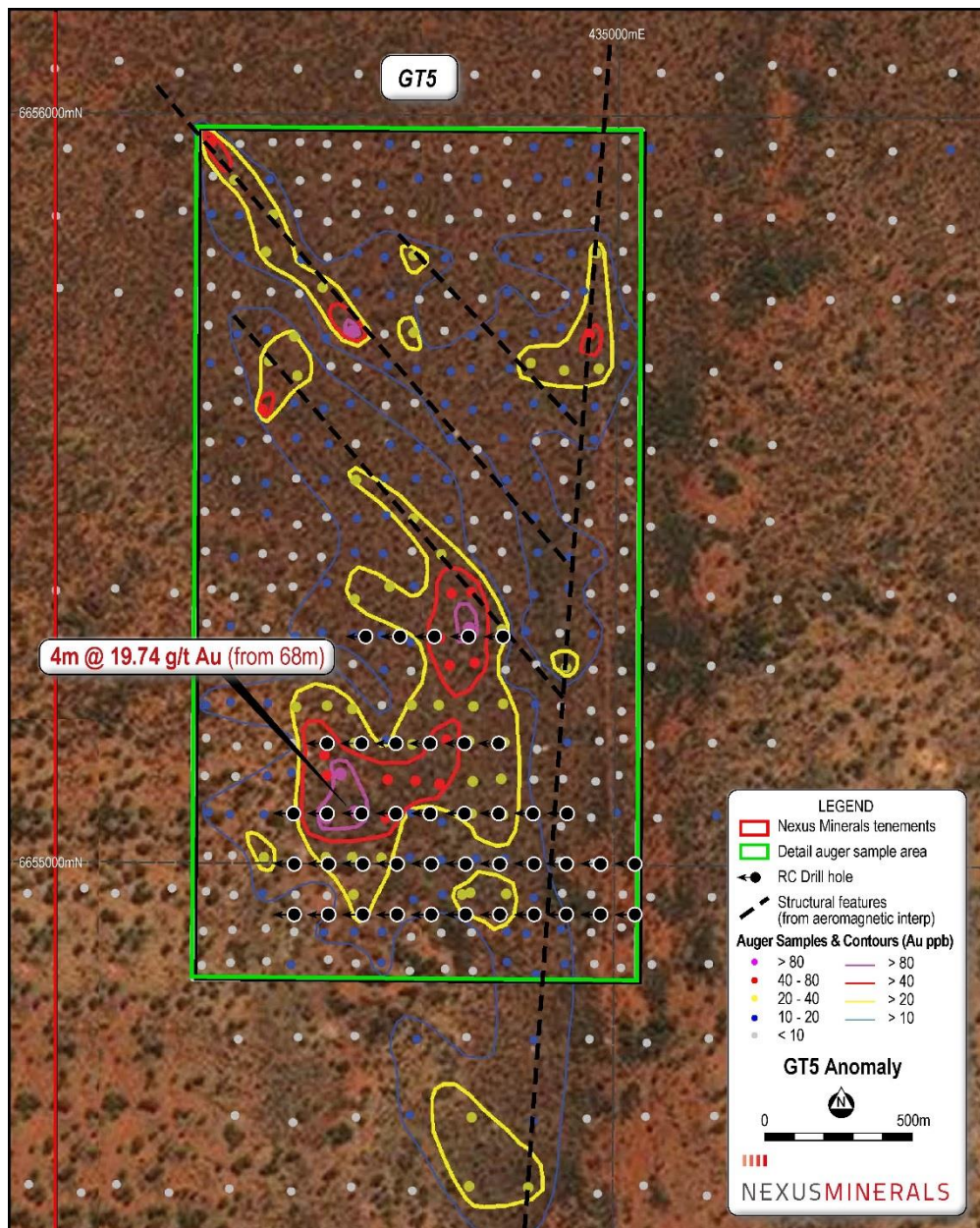


- Anomalous Au (>9ppb Au) defined over 1.9km x 300m
- Includes several zones of more elevated Au (max 107.1ppb)
- Au pathfinder elements Bi, Te and Mo are elevated and zone the anomaly
- Sheared ultramafic rock unit hosts the anomaly
- GT5 lies on the western margin of North-South magnetic feature
- Internal higher grade gold zones (>20 ppb Au) controlled by northwest-southeast splays in underlying magnetic feature
- Auger soil geochemical survey (sample spacing 50m x 40m) and detailed ground magnetic survey completed.
- 2 x RC drill programs completed 2017

LEGEND

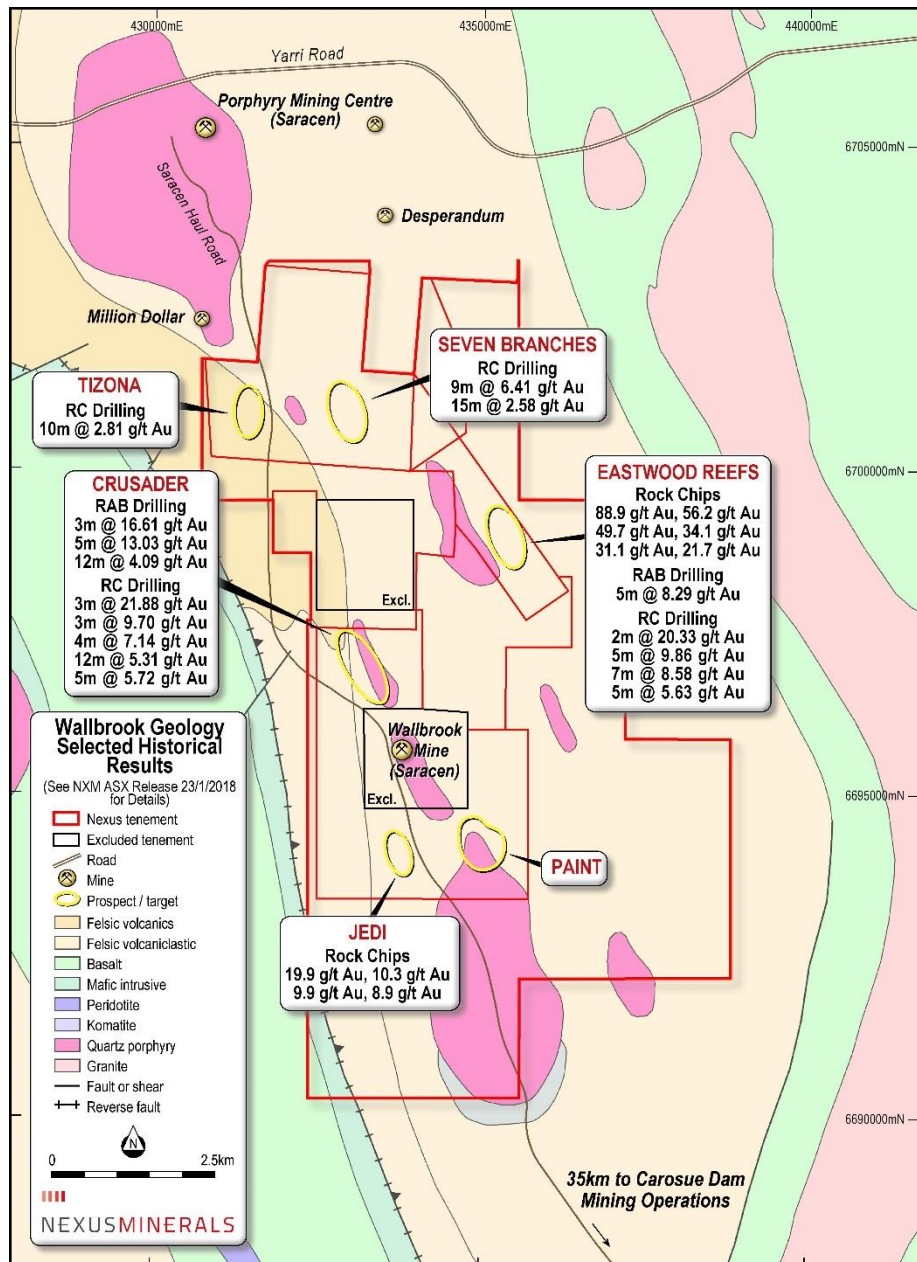
LEGEND	
	Auger Soil Geochemistry (ppb)
	>80 (Max 107.1)
	40- 80
	20-40
	9-20
	Au Pathfinder Anomaly (Bi-Te-Mo)
	Interpreted Fault /Structure (from Gravity/Aeromagnetic Data)

PINNACLES REGIONAL GOLD PROJECT – ANOMALY GT5

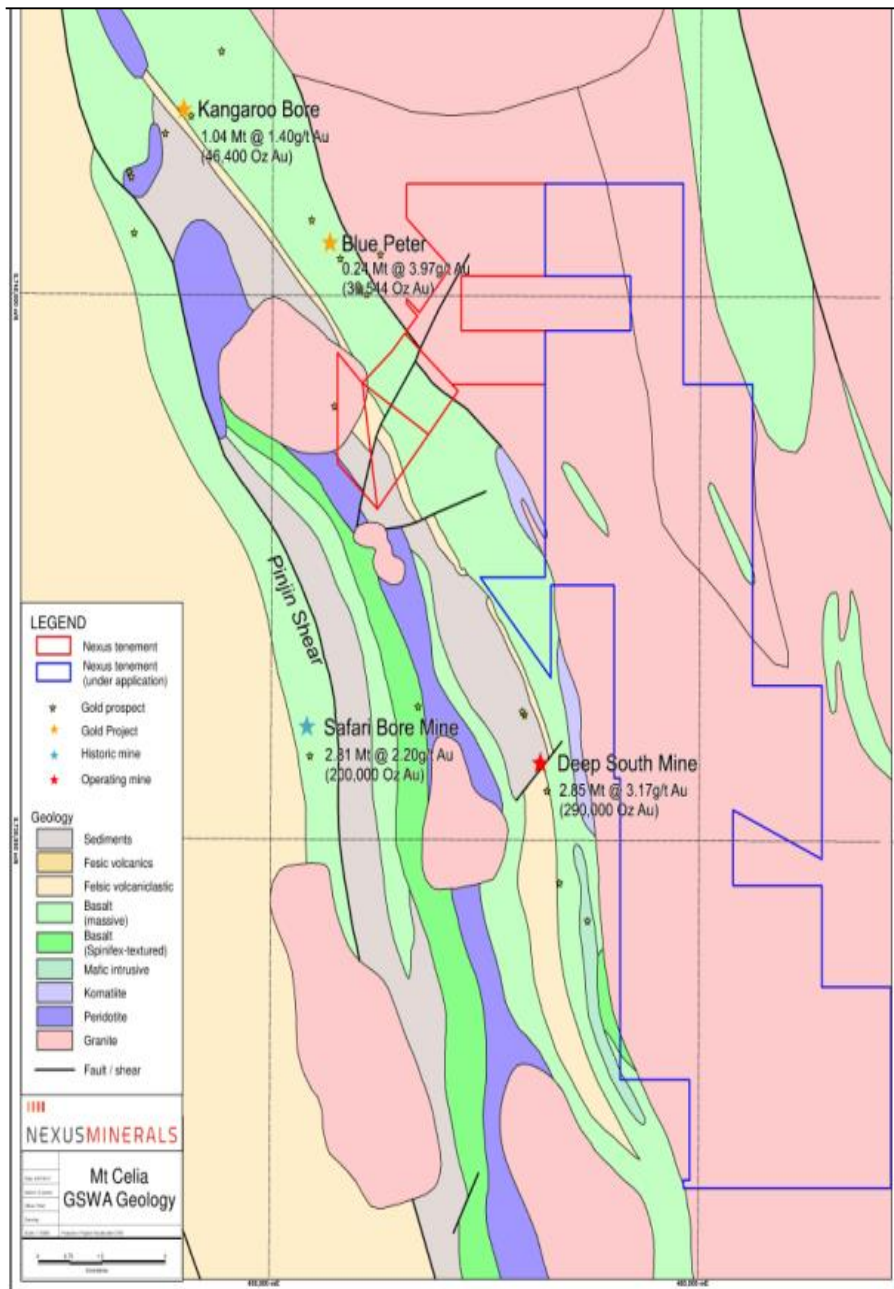


- RC drill targets defined from multi-phase:
 - Geological Mapping
 - Geochemical Sampling
 - Geophysical Surveys
 - Gravity and Aeromagnetic data interp
- First Pass drilling completed 2017
- 42 holes for 4200m
- Multiple hole elevated gold + pathfinder element results including 4m composite:
 - ❑ 4m @ 19.74g/t Au from 68-72m
- 10 holes returning anomalous intersections (>0.1g/t Au)
- RC Drill program of northern structural targets planned for 2018

WALLBROOK GOLD PROJECT



- The Wallbrook Gold Project is located 140km northeast of Kalgoorlie
- Project being acquired from Saracen Gold Mines
- Nexus owns 58km² of contiguous tenements
- Wallbrook considered highly prospective for gold mineralisation associated with porphyry intrusions
- Wallbrook historical data search reveals significant gold assay results from rock chips, and RAB, RC and Diamond drilling campaigns
- Regional gold deposits located near the “tops” of porphyry intrusions, and shear zones within altered intruded host rocks
- Wallbrook region historical production (1921 to 2012) of over 350,000 ounces gold (none of this production was from the Nexus Wallbrook tenements)
- Any future ore mined from the Project tenement may be purchased by Saracen for processing through its Carosue Dam Operations – 35km to the south of the project area



- The Mt Celia Gold Project is located 180km northeast of Kalgoorlie
- Nexus owns 14km² (in Red) of tenements and has applied for 82km² (in Blue) contiguous tenements
- Project falls within Laverton Tectonic Zone (LTZ)
- LTZ hosts multiple significant gold deposits
 - ☐ Sunrise Dam Mine >9Moz Au
 - ☐ Deep South Mine 290,000oz Au
 - ☐ Second Fortune Mine 131,100oz Au
- Project area is characterised by faulting and shearing of Archaean greenstone lithologies
- Mt Celia project area contains numerous small historic gold workings both within greenstone and granite lithologies
- A prominent granitoid occurs to the northwest of the project truncating and disrupting local stratigraphy – as is the case at Deep South Mine
- Aeromagnetic data reveals northeast striking structural displacement – possible repeat structural setting of the Deep South gold mine (7km along strike to the southeast)

NEXUS 6 MONTH PROGRAM

	Jan 2018	Feb 2018	March 2018	April 2018	May 2018	June 2018
Pinnacles	2017 Data Review 2018 Program planning		Auger Regional and Follow-up Infill			
			Ground Geophysical Survey	Aircore Drilling GT6 Regional / First Pass		
					RC Drilling – GT6	
Wallbrook	Historical Data Review 2018 Program planning		Transaction with Saracen for Project Tenements Completes	Geological & Structural Mapping	Aircore Drilling Regional / First Pass	
				Gravity Survey	RC Drilling	

Why Nexus Minerals?

- ✓ Prospective Goldfields Tenement Package
- ✓ Active gold explorer in multi million ounce Au region – majority largely underexplored
- ✓ Pinnacles initial regional auger soil program has identified 16 gold anomalies
- ✓ Pinnacles RC Drilling successfully tested high priority anomalies with follow up drilling underway
- ✓ Joint Venture with Saracen Gold Mines to allow pathway to production – utilising mine and mill infrastructure
- ✓ Professional & Experienced Management Team
- ✓ Actively looking for Gold JV opportunities
- ✓ \$4.5 million Cash on Hand (31/12/2017)

Contact:

Andy Tudor

Managing Director

andy.tudor@nexus-minerals.com

Nexus Minerals Limited

(ASX:NXM - FWB:YAK)

ABN: 96 122 074 006

PO Box 2803,

West Perth WA 6872

T: +61 8 9481 1749

W: www.nexus-minerals.com

Thank You