
KOONENBERRY EXPLORATION UPDATE

Red Mountain Mining Limited (**ASX:RMX**) (the **Company**) is pleased to provide an update on preliminary exploration activities at its 100% owned Koonenberry project, NSW.

On 23rd February 2021, Red Mountain announced successful completion of access agreements with major landholders of the project tenure, enabling the Company to commence exploration activities. Subsequent to this, an initial reconnaissance visit was conducted to confirm historical structural observations and evaluate priority areas for planned geophysical surveys and sampling programmes.

The visited historic occurrences were either narrow in general quartz veins within the predominantly NNW striking Jeffrey's Flat "slate" unit or alluvial working, in general proximal to meandering streams on steep dipping slate. Areas with the most visible evidence of historic activities were Evan's Gully (alluvial work) and Gum Vale (structural narrow vein).

All historic gold workings observed are within proximity to the NNE trending schist belt. The northern occurrences tended to be of alluvial nature (Evans Gully and workings north of Evans Gully), while the southern occurrences are vein hosted, predominantly related to quartz veining. It was further observed that the central area of the schist belt seems to contain more sedimentary accumulations, in the central south of RMX's tenure as well within the northern part of Manhattan's tenure. This central low laying area may be attributed to structural weaknesses, possibly acting as conduits for mineralization, covered by younger sediments.

Next steps - Geophysics

The site visit has confirmed a passive seismic survey would be suitable to yield the best results in relation to identifying deeper mineralised structures. The Company is currently in advanced stages of the preparation of a passive seismic survey at specific targets within the Koonenberry project at the earliest availability.



Photo 1: Gum Vale ROM piles, looking East



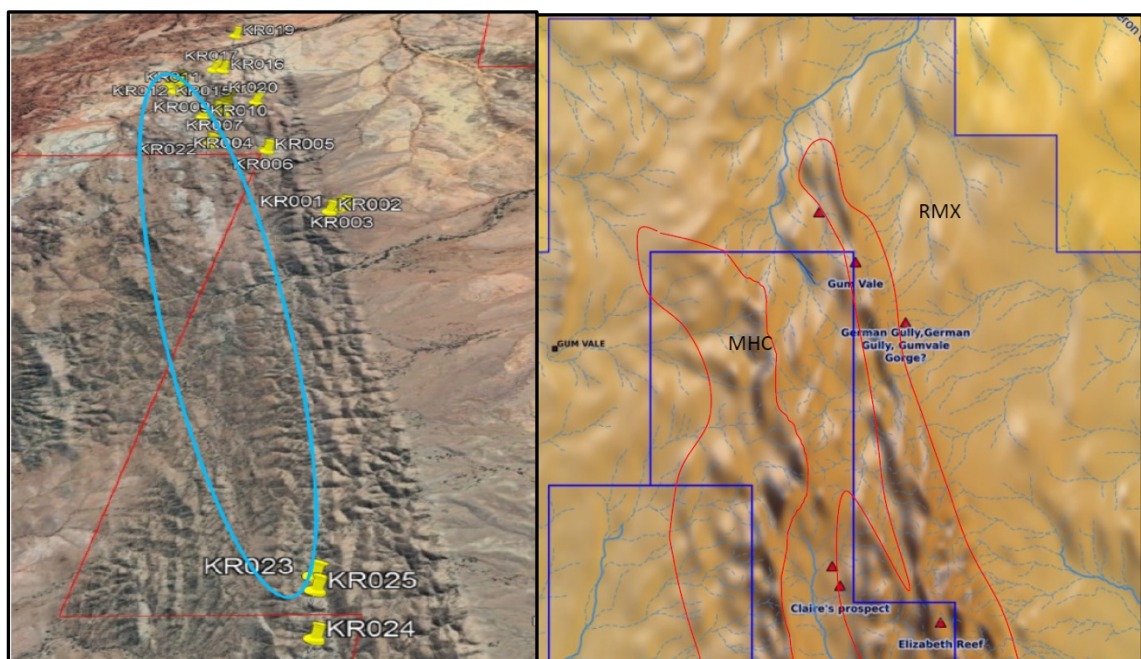
Photo 2: Gumvale shaft with quartz veining in schist / slate



Photos 3 and 4: Evans Gully alluvial deposition and underlying basal schist (l) and alluvial



Photo 5: Alluvial workings at Evans Gully



Figures 1 and 2: Morphology of the central RMX tenure, central elongated valley flanked by NNE trending schist hills, potential due to structural weakness (left – blue line) and zoomed in observed ridge areas (right – dark grey circled with red line)

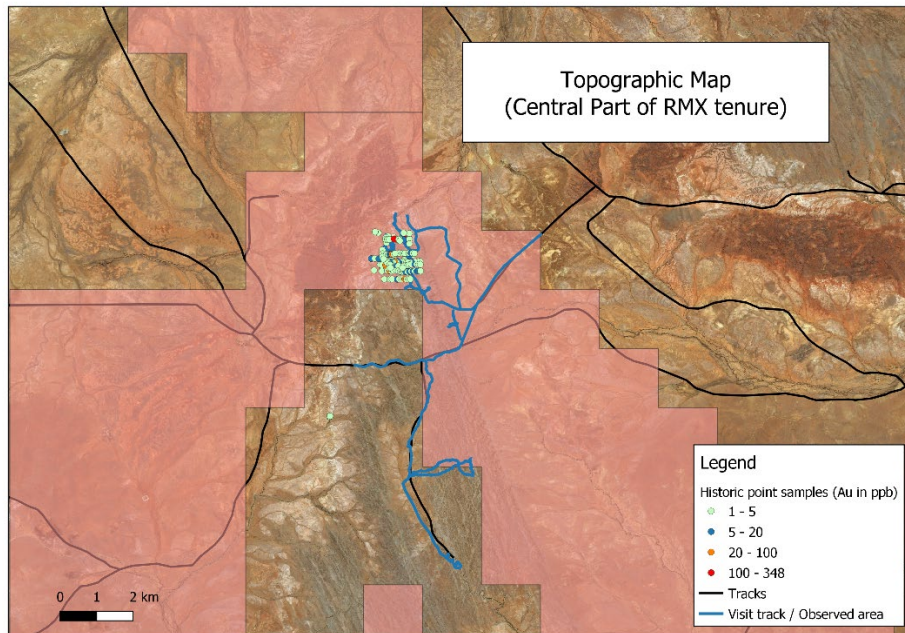


Figure 3: Historic samples and observed areas on topographic map

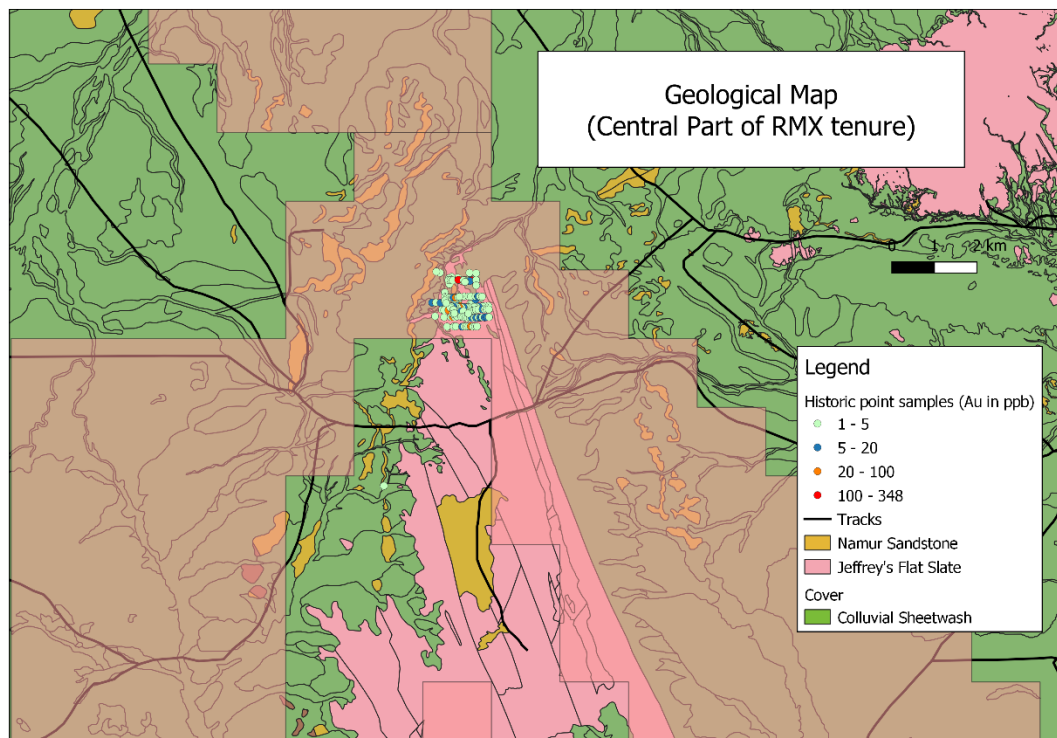


Figure 4: Historic samples and observed areas on geological map, indicating and confirming that the majority of occurrences are seemingly originating in the Jeffrey's Flat slate unit

Authorised for and on behalf of the Board,



Mauro Piccini,
Company Secretary