



TECHGEN METALS
LIMITED

COMPANY PRESENTATION

September 2024 – ASX: TG1



Disclaimer

The information contained in this presentation has been prepared by TechGen Metals Ltd (ACN 624 721 035) (Company).

This presentation is not an offer, invitation, solicitation or other recommendation with respect to the subscription for, purchase or sale of any securities in the Company. This presentation has been made available for information purposes only and does not constitute a prospectus, short form prospectus, profile statement or offer information statement nor does it constitute investment or financial product advice (nor taxation, accounting or legal advice) and it is not intended to be used as the basis for making an investment decision.

This presentation does not include all available information and should not be used in isolation as a basis to invest in the Company. This presentation is not subject to the disclosure requirements affecting disclosure documents under Chapter 6D of the Corporations Act 2001 (Cth). The information in this presentation may not be complete and may be changed, modified or amended at any time by the Company, and is not intended to, and does not, constitute representations and warranties of the Company.

The Company does not have a significant operating history on which to base an evaluation of its business and prospects. Therefore, the information contained in this presentation is inherently speculative.

The information contained in this presentation is strictly confidential and you must not disclose it to any other person. While the information contained in this presentation has been prepared in good faith, neither the Company or any of its directors, officers, agents, employees or advisors give any representation or warranty, express or implied, as to the fairness, accuracy, completeness or correctness of the information, opinions and conclusions contained in this presentation. Accordingly, to the maximum extent permitted by law, none of the Company, its directors, employees or agents, advisors, nor any other person accepts any liability whether direct or indirect, express or limited, contractual, tortious, statutory or otherwise, in respect of, the accuracy or completeness of the information or for any of the opinions contained in this presentation or for any errors, omissions or misstatements or for any loss, howsoever arising, from the use of this presentation.

This presentation may contain statements that may be deemed “forward looking statements”. Risks, uncertainties and other factors, many of which are outside the control of the Company can cause actual results to differ materially from such statements. Such risks and uncertainties include, but are not limited to, exploration risks, tenure and access risks and commodity price volatility and exchange rate risks, as well as political and operational risks, and governmental regulation and judicial outcomes.

The Company makes no undertaking to update or revise such statements, but has made every endeavour to ensure that they are fair and reasonable at the time of making the presentation.

Investors are cautioned that any forward-looking statements are not guarantees of future performance and that actual results or developments may differ materially from those projected in any forward-looking statements made.

Authorisation - For the purpose of Listing Rule 15.5, this announcement has been authorised for release by the Board of Directors of TechGen Metals Limited.

Competent Person Statement - The information in this announcement that relates to Exploration Results is based on and fairly represents information compiled and reviewed by Andrew Jones, a Competent Person who is a member of the Australasian Institute of Mining and Metallurgy (AusIMM). Andrew Jones is employed as a Director of TechGen Metals Limited. Andrew Jones has sufficient experience that is relevant to the style of mineralisation and type of deposits under consideration and to the activity being undertaken to qualify as a Competent Person as defined in the 2012 edition of the Australasian Code of Reporting of Exploration Results, Mineral Resources and Ore Reserves. Andrew Jones consents to the inclusion in this announcement of the matters based on his work in the form and context in which it appears.

Corporate Snapshot

128m

Shares on Issue

\$5.12m

Market Cap
(Sept 7 2024)

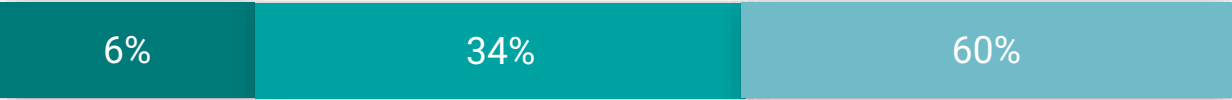
\$2.3m

Cash at bank
(June 30 2024)

22m

Options on Issue

Shareholder Distribution



TG1 Management

Top 20 Shareholders

Others

TECHGEN METALS LIMITED

Major Projects

STATION CREEK & MT BOGGOLA	COPPER – GOLD – ANTIMONY - URANIUM
BLUE DEVIL	COPPER – GOLD
COPPER SPRINGS	COPPER – NICKEL - GOLD
SALLY DOWNS	COPPER – NICKEL - GOLD
SPRINGVALE	NICKEL – COPPER - PGE
JOHN BULL	GOLD
NORTH NIFTY JV IGO	COPPER - GOLD



Board & Management



MAJA MCGUIRE
NON-EXECUTIVE CHAIR

- Experienced corporate executive and company director, bringing 15 years' experience at board and senior management level. Holds LLB and BComm qualifications from the University of Western Australia.
- Experience includes working with listed companies as a non-executive chair/director, general counsel (ASX:AVR, ASX:AJX) and in top-tier legal private practice (Clayton Utz).
- Currently Non-Executive Director of Kuniko Ltd (ASX:KNI), Indiana Resources Ltd (ASX:IDA), & LTR Pharma Ltd (ASX:LTP).



ANDREW JONES
EXECUTIVE DIRECTOR

- More than 20 years' experience as a geologist, having worked throughout Australia, Africa and South America.
- Holds a B.App.Sci degree from RMIT University and Honors and MSc degrees from the University of Tasmania.
- Specialises in gold, copper, nickel and cobalt. Member of both the Australian Institute of Geoscientists (AIG) and the Australasian Institute of Mining and Metallurgy (AusIMM).



ASHLEY HOOD
MANAGING DIRECTOR

- Exploration and corporate experience of more than 18 years in the mining and exploration industry with junior and major mining companies, listing several ASX exploration companies.
- Specialises in project and people management, native title negotiations, project due diligence, acquisitions and has a portfolio of family held mineral and precious metals projects.
- Board senior Executive ASX experience.



Aida Tabakovic
COMPANY SECRETARY

- Appointed as the Company Secretary of the Company on 1 December 2022.
- Over 15 years' experience in the accounting profession. Holds a Double Major Degree in Accounting and Finance and a Postgraduate Degree in Business Law. Provides services to a number of ASX listed and unlisted companies, specialising in financial accounting and corporate compliance.
- Involved in listing a number of junior exploration companies on the ASX and is currently Company Secretary for numerous ASX listed companies.

Technical Advisory Board



CARL SWENSSON
GEOLOGIST

- Fellow of the AIMM, a member of Society of Economic Geologists and a Qualified Person under Canadian Instrument NI43-101
- Over 40 years of experience in mineral exploration and resource assessment.
- In-field experience in most commodities and deposit styles for gold, base metals, tin, tungsten, lithium, uranium, diamonds, coal and graphite across varied geological environments from Archean to Pliocene.
- Experience with both multinational and junior companies including as Chief Exploration Geologist for Normandy Mining Pty Ltd.
- Instrumental in starting several junior exploration companies in Australia and Canada and served on the Boards of a number of companies with extensive Australian and international experience having worked in Brazil, Chile, Peru, Canada, USA, Indonesia, Cambodia, Turkey, Greece and Tanzania.



PETER SPITALNY
GEOLOGIST

- Senior exploration experience spans 30 years' exploration experience, focused upon gold and expert in lithium pegmatites. Has significant experience with manganese, nickel, copper.
- Member of the AusIMM and has acted for several publicly listed companies as a Competent Person, as defined by the JORC Code (2012). Has held board positions in public companies.



RUSSELL MORTIMER
GEOPHYSIST

- Experienced in the application of geophysical techniques in mineral exploration for gold, platinum group elements (PGE's) and a broad range of base metals including, iron ore, nickel, copper, manganese, graphite as well as mineral sands and uranium.
- Experienced in geophysical exploration for nickel/copper sulphides and other base metals and is directly responsible for a number of well renowned geophysical discoveries.




PETER PEEBLES
GEOLOGIST

- Senior geologist with over 36 years' experience, largely working in Australia, Africa, Europe, and China.
- Specialising in Gold, manganese/iron, base metals including nickel, copper lead and zinc, and industrial metals based in China.
- Multiple ASX board and exploration management positions.



Short Term Price Catalysts

- 01** Airborne EM at Blue Devil, Sally Downs & Copper Springs, Cu-Au-Ni-PGE.
- 02** Soils & IP follow-up of high-grade antimony rock chips at Station Creek, Cu-Au-Sb.
- 03** Rock chip sampling and scintillometer survey at Mt Boggola, Cu-Au-Sb & U.
- 04** Ground follow-up of airborne EM targets in the Kimberley, Cu-Au-Ni-PGE.
- 05** Phase 3 drilling at John Bull Gold Project, NSW.
- 06** IGO managing exploration at the North Nifty Project, WA. 





Exploration Investment Highlights



Station Creek & Mt Boggola

- New developing Antimony targets – grades up to 7.05% including 2.25%, 2.13%, 1.94% & 1% Sb @ Station Creek
- Mt Boggola has x4 +1% new Antimony targets
- Antimony soil anomaly 1.2km x 400m in size at +15ppm Sb (& open) Station Creek
- Project area has seen no previous focused exploration for antimony, until now
- Antimony is listed as a Critical Mineral by the USA, EU and Australia, essential for military applications, batteries, and now subject to China's latest export restrictions



Blue Devil

- First mover advantage with Australia's first 12.5 Hz airborne EM system Expert EM
- Massive boxwork copper gossans – never tested by EM
- First ever EM surveys planned
- High grade mineralisation occurrences = 50.5% Cu, 18.5g/t Au & 53g/t Ag
- Previous exploration largely for lead/zinc (MVT type targets)
- Large landholding favourable geology targeting VMS and Intrusive type systems
- Close to highway and port infrastructure
- Immediate exploration activities planned



Kimberley Projects

- First mover advantage with Australia's first 12.5 Hz airborne EM system Expert EM at Copper Springs and Sally Downs
- First ever airborne geophysics survey at Sally Downs Copper (+/- Nickel-PGE) project has already generated two high-priority discrete late-time conductors for drill targeting
- The Savannah Nickel/Copper Mine is located only 10km from the Sally Downs Project in a similar geological setting
- Rock chip samples to 2.3% & 1.5% Cu, (malachite, azurite & chalcopyrite)
- Bullseye Gabbro Prospect which is a discrete gravity anomaly



John Bull

- Scale opportunity
- Orogenic & Intrusive Related Gold Systems
- JBRC001 68m @1.01 g/t Au, including 23m @ 2.02 g/t from surface
- 66m @ 1.14 g/t Au from 32m (hole JBRC006)
- Surface geochemical anomaly of +1.2km above 100ppb Au with a project peak soil value of 10g/t Au (10,000 ppb)
- Stage 3 RC, targeting possible Monzonite intrusive, peak soils of 10g/t and infill at John Bull shafts
- Free hold land – no native title



Ashburton - Station Creek | Cu-Au-Sb

New Antimony Targets Identified

Location

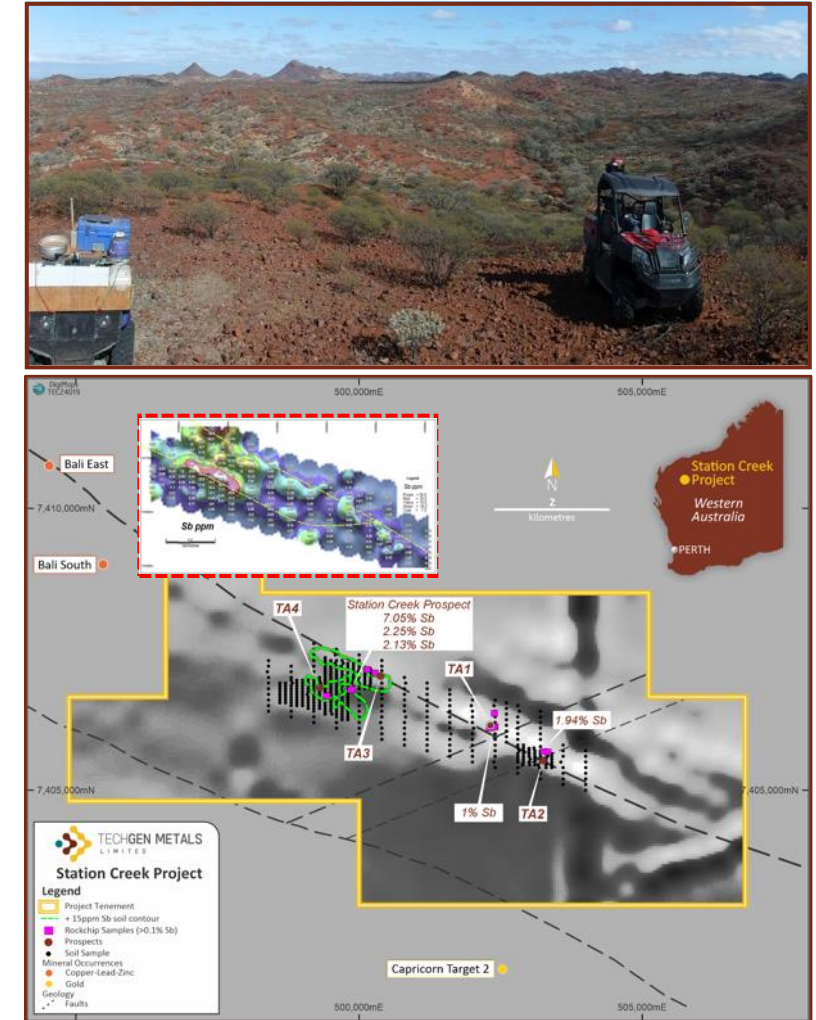
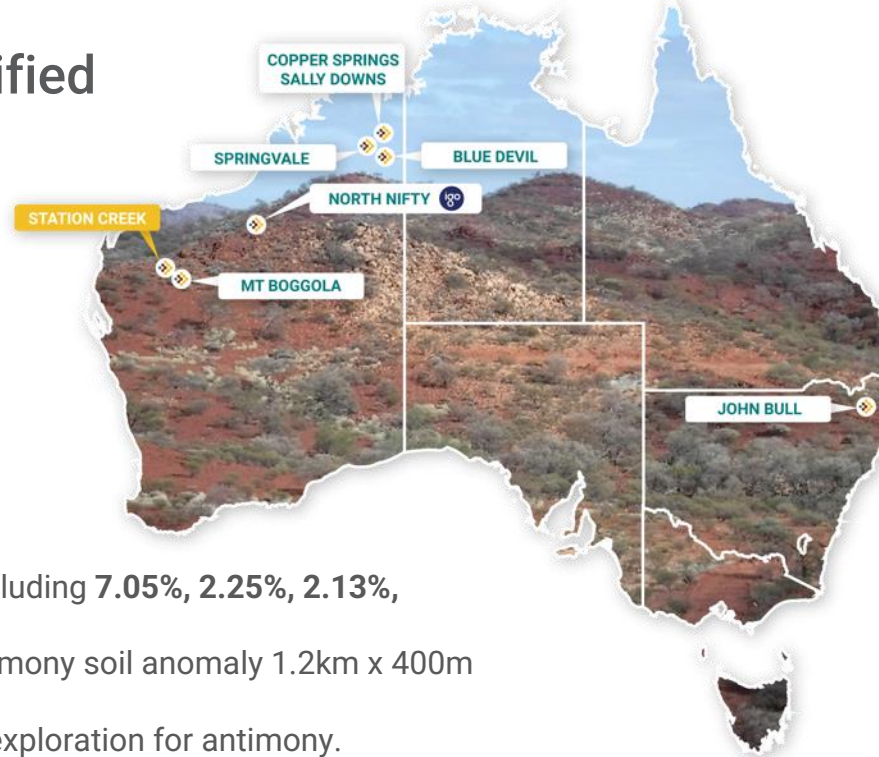
- The Station Creek Project is located ~70km to the south of Paraburdoo within the Ashburton Region of Western Australia. The project comprises Exploration Licence E08/2946 covering an area of 54km².

Mineralisation

- High-grade antimony rock chips at project including **7.05%, 2.25%, 2.13%, 1.94% & 1%**.
- Limited soil sampling outlines a +15ppm Antimony soil anomaly 1.2km x 400m in size.
- Project area has seen no previous focussed exploration for antimony.
- Antimony geochemistry and high-grade rock chips remain untested by drilling.

Next Steps

- Infill and step-out soil sampling targeting antimony.
- Induced Polarisation (IP) geophysical survey to test area of highest grade antimony rock chip samples.
- While antimony is being prioritised, the rich copper, gold and silver occurrences are being followed up.





Ashburton - Mt Boggola | Cu-Au-Sb-U

New Antimony & Uranium Targets

Location

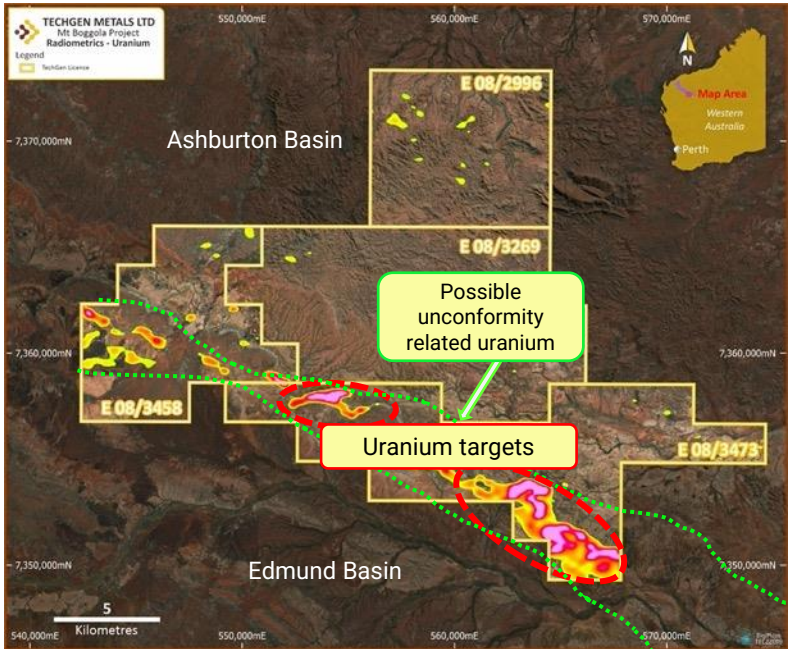
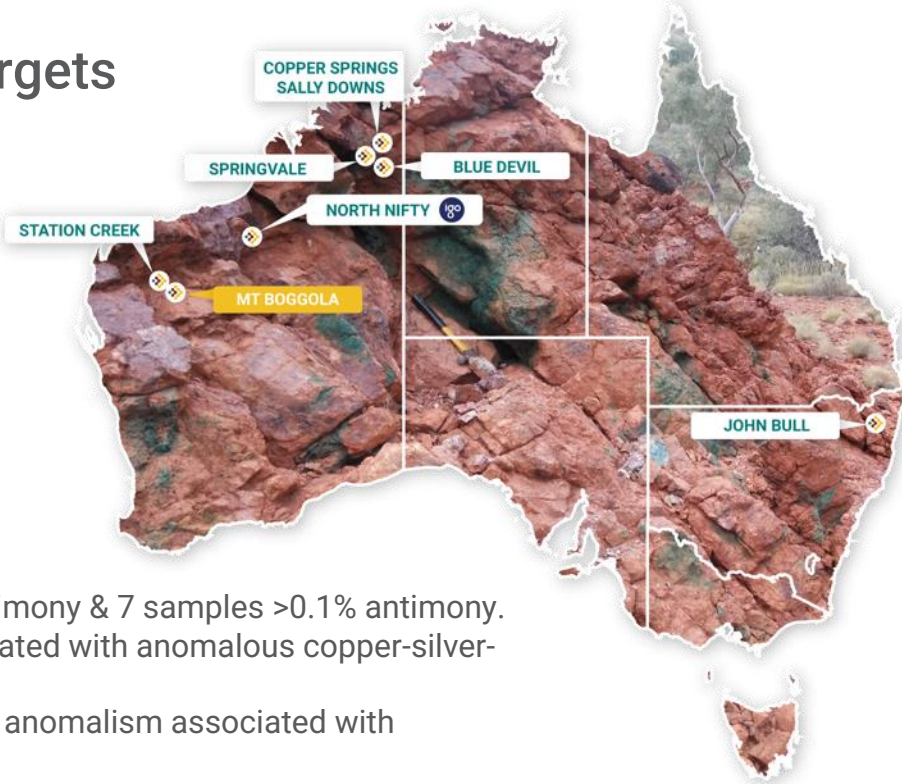
- The Mt Boggola Project is located ~60km to the south of Paraburdoo within the Ashburton Region of Western Australia. The project comprises four Exploration Licences covering 352km² of highly prospective geology.

Mineralisation

- 3 rock chip samples returned assays >1% antimony & 7 samples >0.1% antimony.
- The anomalous antimony samples are associated with anomalous copper-silver-lead-arsenic-gold.
- A ground spectrometer survey has confirmed anomalism associated with radiometric thorium and uranium anomalies.

Next Steps

- Rock chip sampling and mapping of anomalous antimony rock chip areas.
- Ground scintillometer survey to test level of anomalism associated with spectrometer and radiometric uranium & thorium targets.





Kimberley – Blue Devil | Cu-Au

Battery Metals New Acquisition

Location

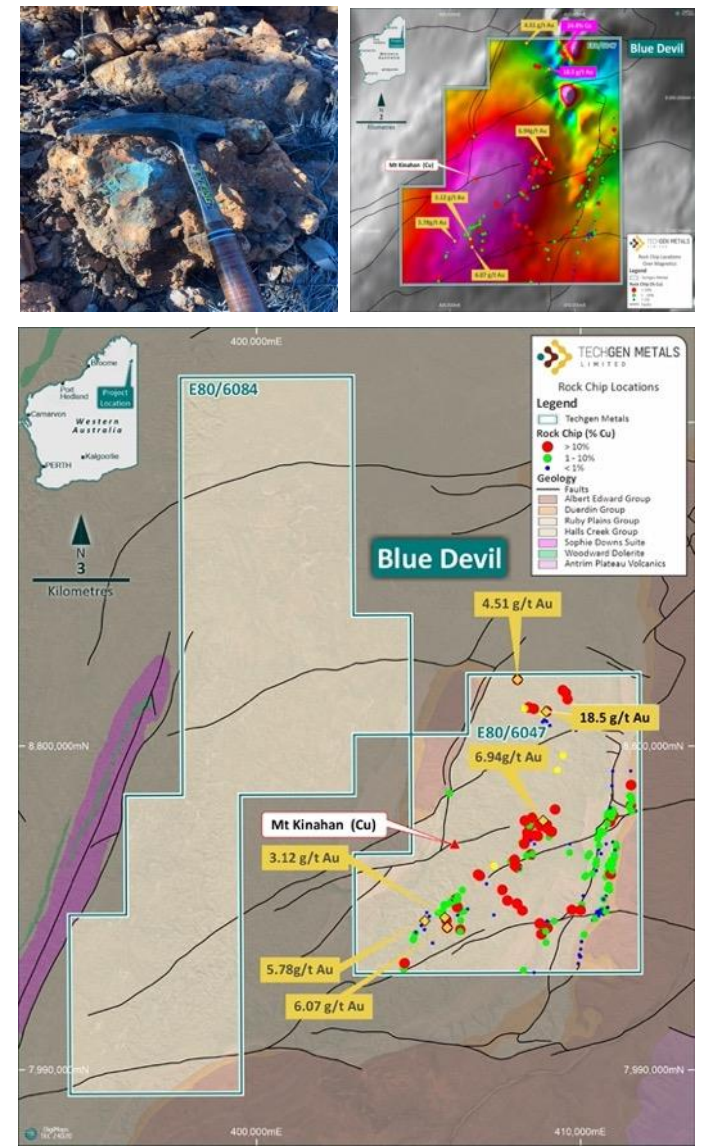
- In the world-class mineral province of the Halls Creek Orogen. The project is located 40km northeast of Halls Creek covering an area of 187km².

Mineralisation

- Rock chip peak values of **50.5% Cu, 18.5g/t Au & 53g/t Ag**.
- Areas of Cu-Au stream, soil & rock chip anomalism remain open along strike and untested by geophysics or drilling.
- Expert geochemistry modelling element associations suggest potential for intrusion-related, sediment hosted and VMS style Cu-Au mineralization across the project.

Next Steps

- Airbourne EM geophysics survey covering the entire eastern licence on 200m spacings.
- Rock chip sampling and geological mapping of target areas (T1 – T7).



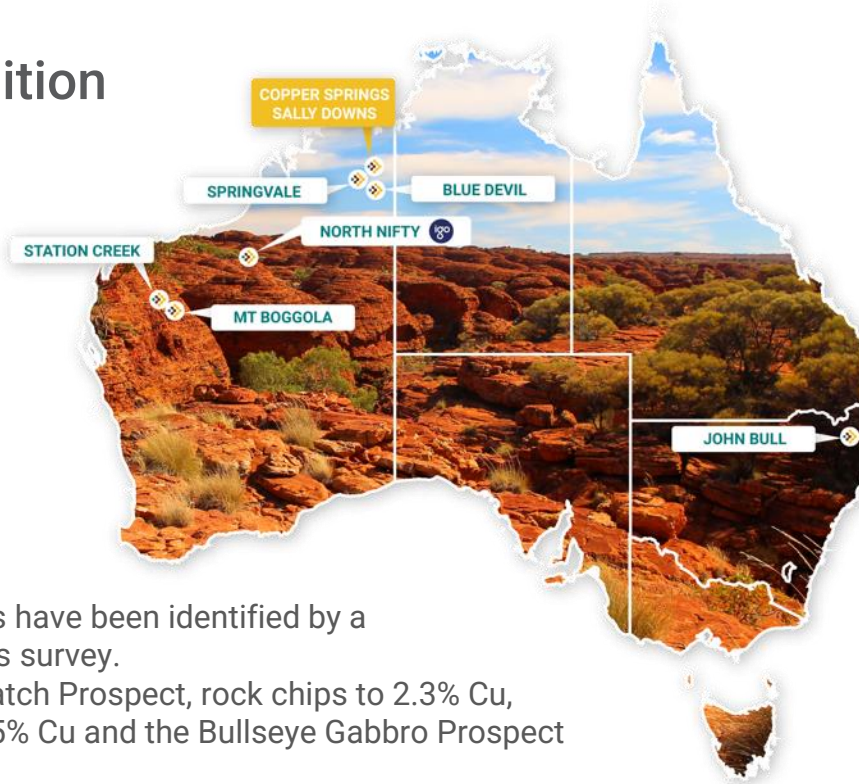


Kimberley – Sally Downs| Cu-Ni-Au

Battery Metals New Acquisition

Location

- In the world-class mineral province of the Halls Creek Orogen. The project is located ~75km northeast of Halls Creek on Exploration Licences E80/6059 covering an area of 118km².

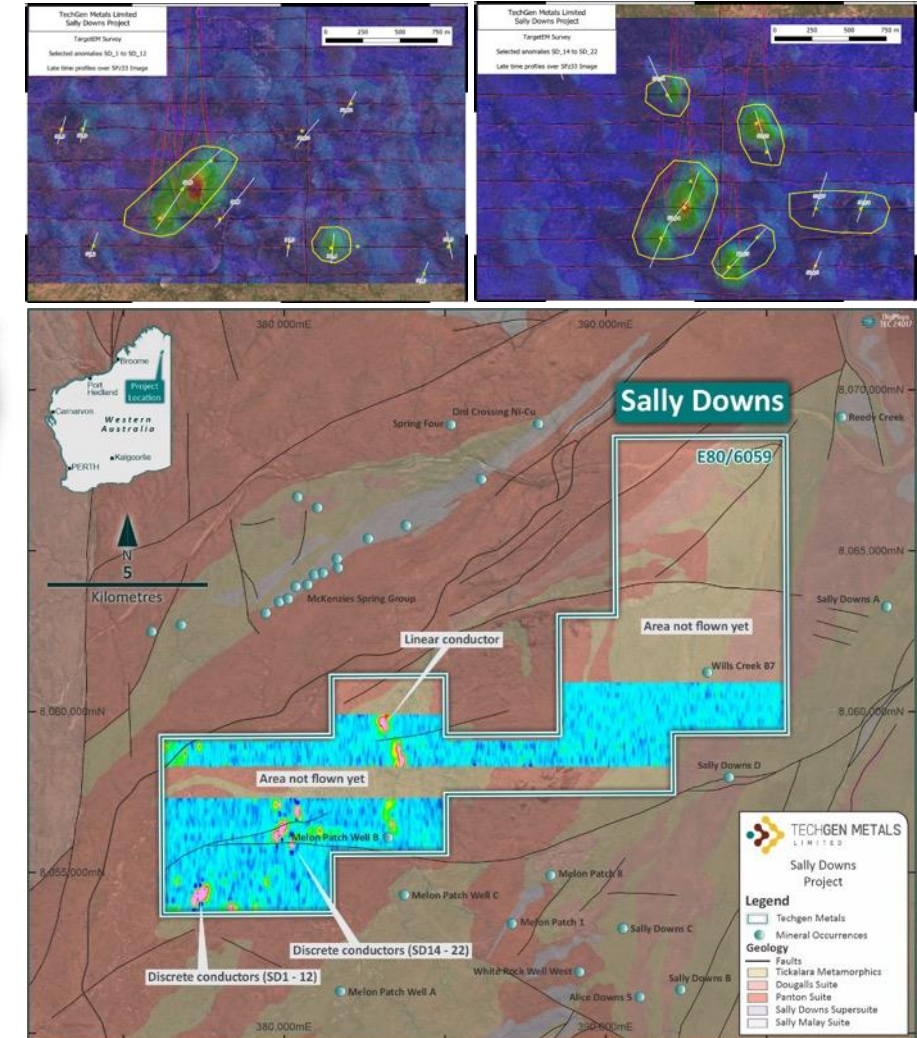


Mineralisation

- High-priority discrete late-time conductors have been identified by a partially complete airborne EM geophysics survey.
- Previous work has identified the Melon Patch Prospect, rock chips to 2.3% Cu, the Wills Creek Prospect, rock chips to 1.5% Cu and the Bullseye Gabbro Prospect which is a discrete gravity anomaly.
- The Savannah Nickel Mine is located only 10km from the Sally Downs Project in a similar geological setting.

Next Steps

- Completion of airborne EM geophysics survey and ground follow-up of EM targets.





Kimberley – Copper Springs | Cu-Ni-Au

Battery Metals New Acquisition

Location

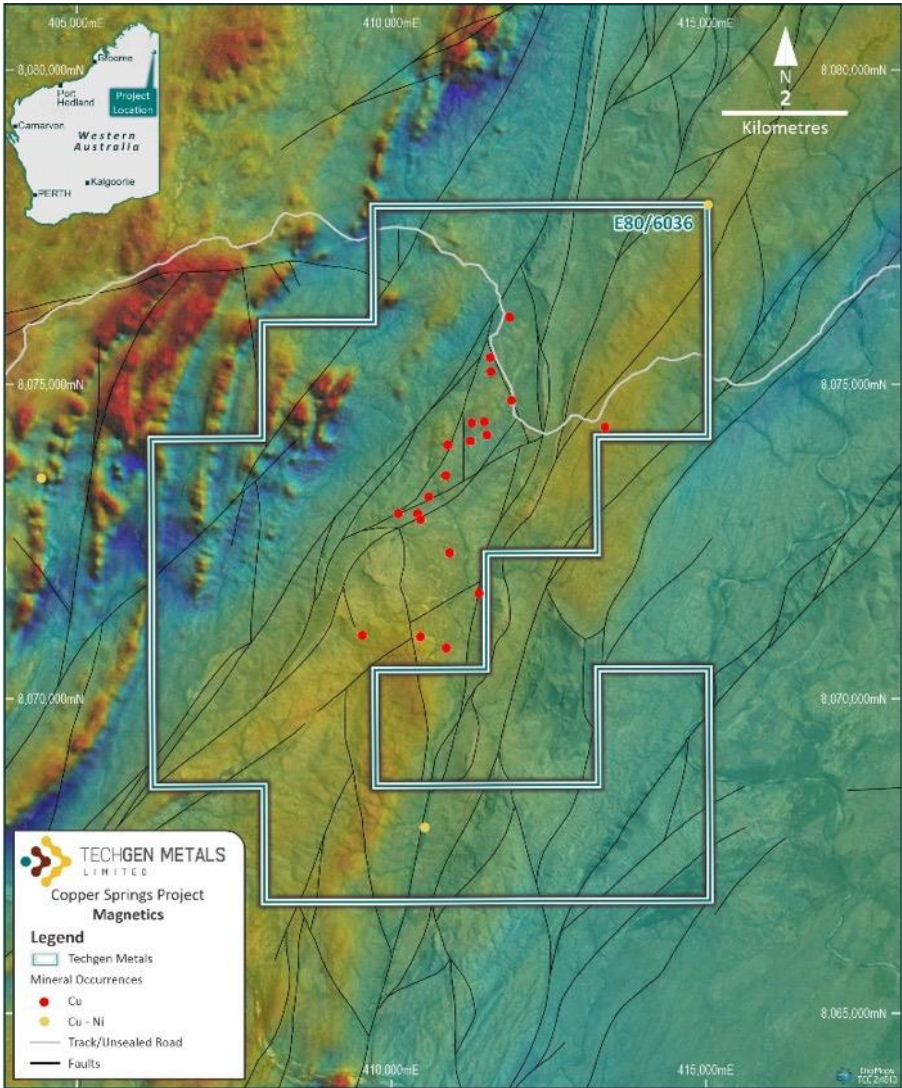
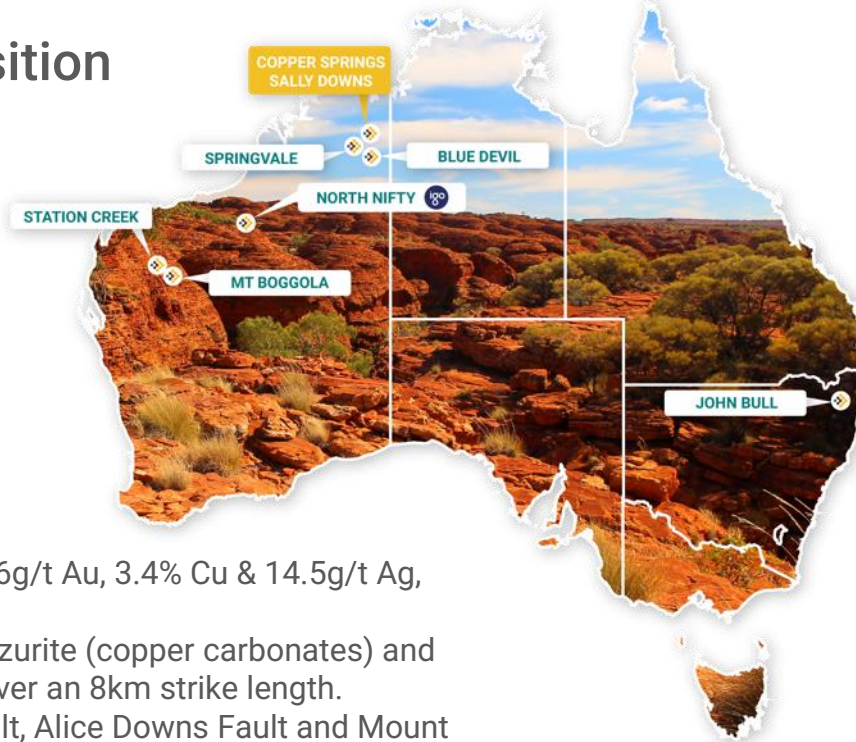
- In the world-class mineral province of the Halls Creek Orogen. The project is located ~100km northeast of Halls Creek on Exploration Licence E80/6036 covering an area of 54km².

Mineralisation

- Previous rock chip values of 4% Cu & 0.26g/t Au, 3.4% Cu & 14.5g/t Ag, 2.95% Cu and 2.6% Cu.
- 23 recorded non-continuous malachite, azurite (copper carbonates) and goethite (iron) gossanous occurrences over an 8km strike length.
- Major regional faults, the Halls Creek Fault, Alice Downs Fault and Mount Ranford Fault pass through the project area.
- No previous drilling or modern geophysics testing of copper occurrences.

Next Steps

- Airbourne EM geophysics survey covering the entire licence area.



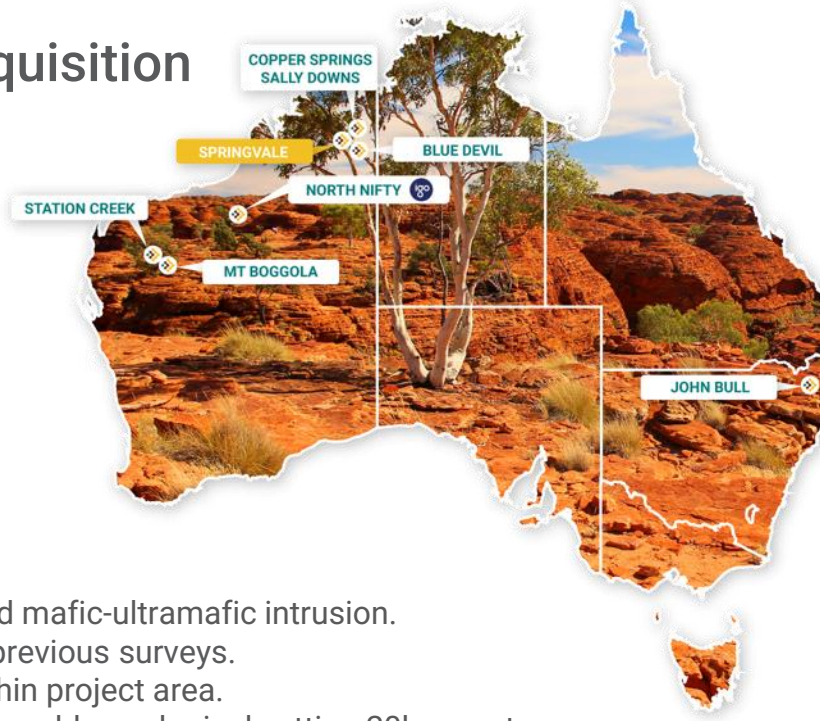


Kimberley – Springvale | Ni-Cu-PGE

Battery Metals New Acquisition

Location

- In the world-class mineral province of the Halls Creek Orogen. The project is located ~50km north of Halls Creek on Exploration Licence E80/6035 covering an area of 20km².

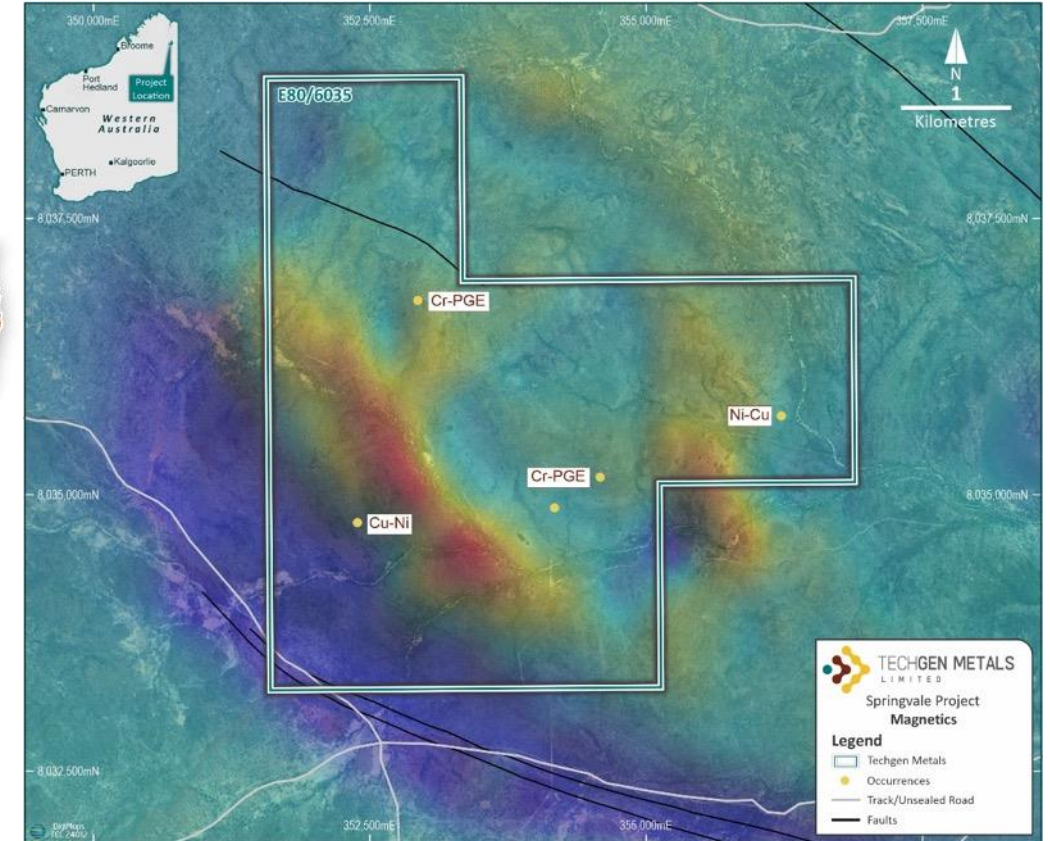


Mineralisation

- Under-explored differentiated layered mafic-ultramafic intrusion.
- Untested airborne EM targets from previous surveys.
- Ni-Cu, Cu-Ni & Cr-PGE prospects within project area.
- Panton Sill Pt-Pd-Au deposit in comparable geological setting 20km east.

Next Steps

- Surface testing of untested airborne EM targets.





New England Orogen – John Bull | Gold

Gold Discovery – September 2022

Location

- The John Bull Gold Project is located east of Glen Innes in northern New South Wales within the New England Orogen. The project covers 32km².

Maiden Drill Hole JBRC001

- First hole, JBRC001, intersected **68m @ 1.0g/t Au** including **23m @ 2.02g/t Au** with a peak grade of **13.8g/t Au** (from surface).
- JBRC007, **94m @ 0.95 g/t Au** from 4m and included **66m @ 1.14 g/t Au** from 32m.
- All 7 drill holes returned assays of > 1 g/t Au.

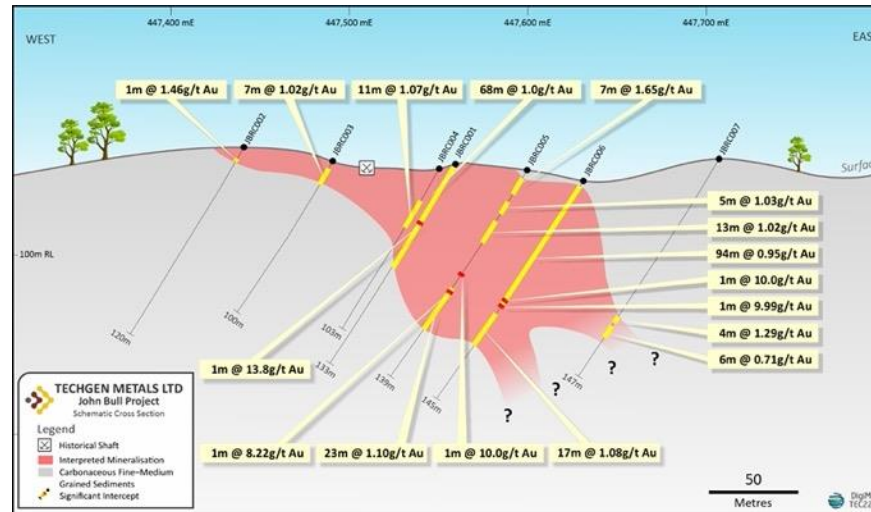
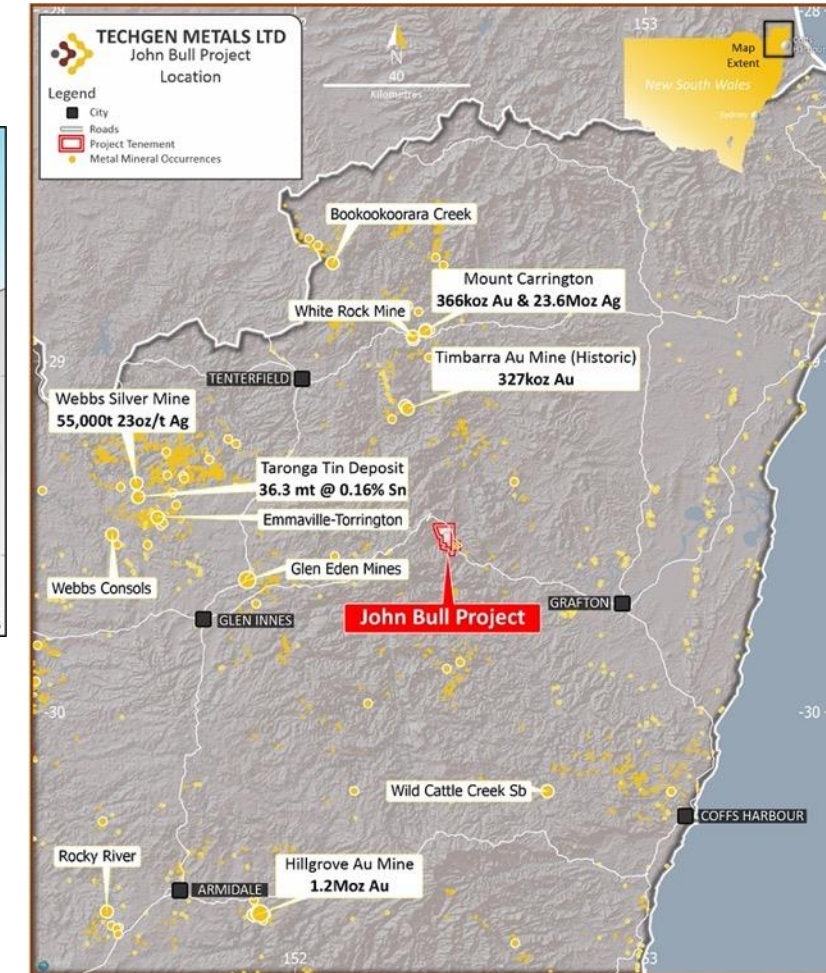


Figure: Discovery RC drill line completed at the John Bull Project in 2022.

Historic

- The John Bull Gold Shafts were mined in the mid 1880's (approximately 14 shafts have been located to date).
- Two main areas of surface gold sluicing worked in the 1940's (free gold within weather clays).
- Kennecott & Southern Goldfields completed a trench in the 1980's that returned: **160m @ 1.2g/t gold**, with impressive higher-grade intervals including **5m @ 18.0g/t gold** and **5m @ 7.1g/t gold**.
- Since gold was first discovered 137 years ago, no drilling had occurred until TechGen Metals (August 2022).





New England Orogen – John Bull | Gold

Width and high-grade gold potential

Soil Geochemistry

- Peak soil sample results of **10 g/t gold** and **8.56 g/t gold**.
- Forty-two soil samples** to date have returned values **+ 1 g/t gold**.
- Two broad zones of **+ 0.1 g/t (100 ppb)** soil gold anomalism have been identified. Zone 1 is 950m x 275m & Zone 2 is 250m x 150m and both open.

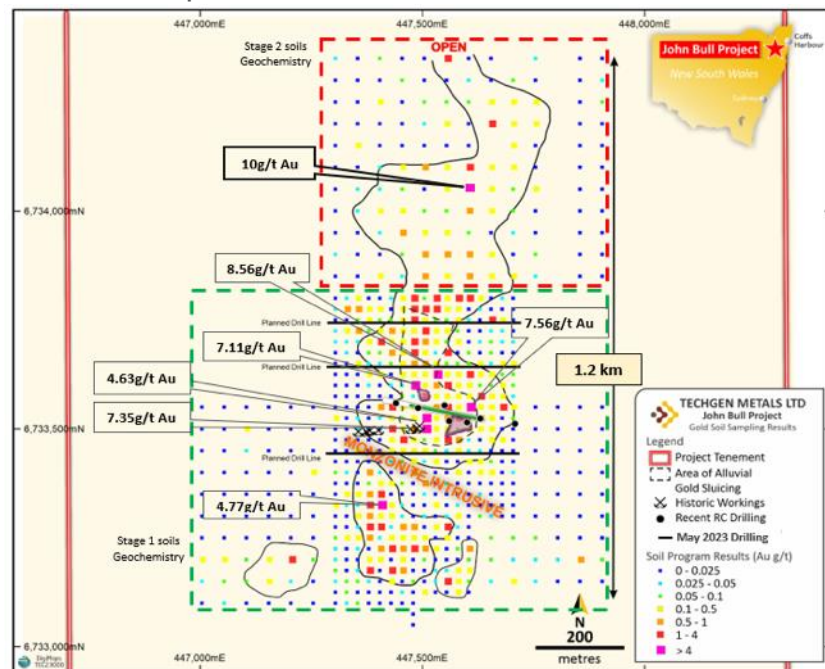


Figure: Gold soil geochemistry, best grades, stage one collar locations and current planned drilling.

Geology Highlights

- Petrology confirms intrusive rock types in project area (December 2022).
- 1.2 km strike of 0.1 g/t gold (100ppb).**
- Gold mineralisation may represent an Intrusion Related Gold System (IRGS) style of mineralisation as well as the orogenic system identified to date.
- Large scale and tonnage potential, mineralisation commences at surface.

Next Steps Q4 2024

- Phase 3 RC drilling stepping out to north and south of previous drilling.



Photo 1 & 2: Historical shaft within Monzonite outcrop (4.77g/t gold in soils) and Monzonite in the field closeup view.



Paterson Orogen – North Nifty | Copper



Joint Venture with IGO

Location

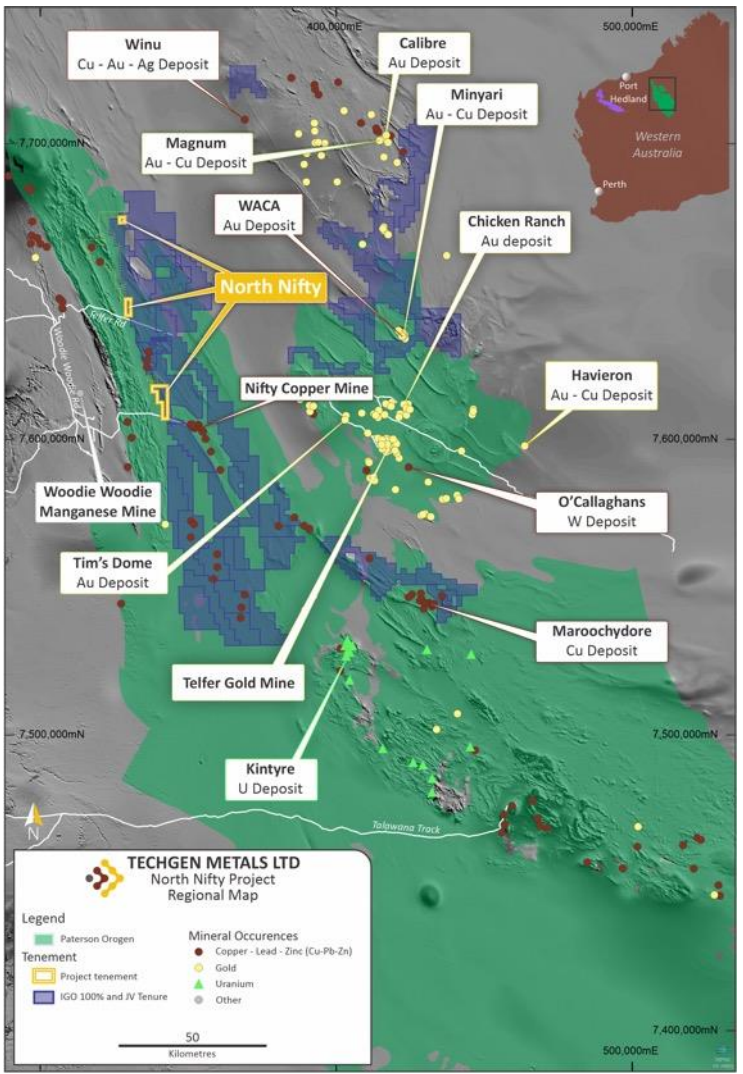
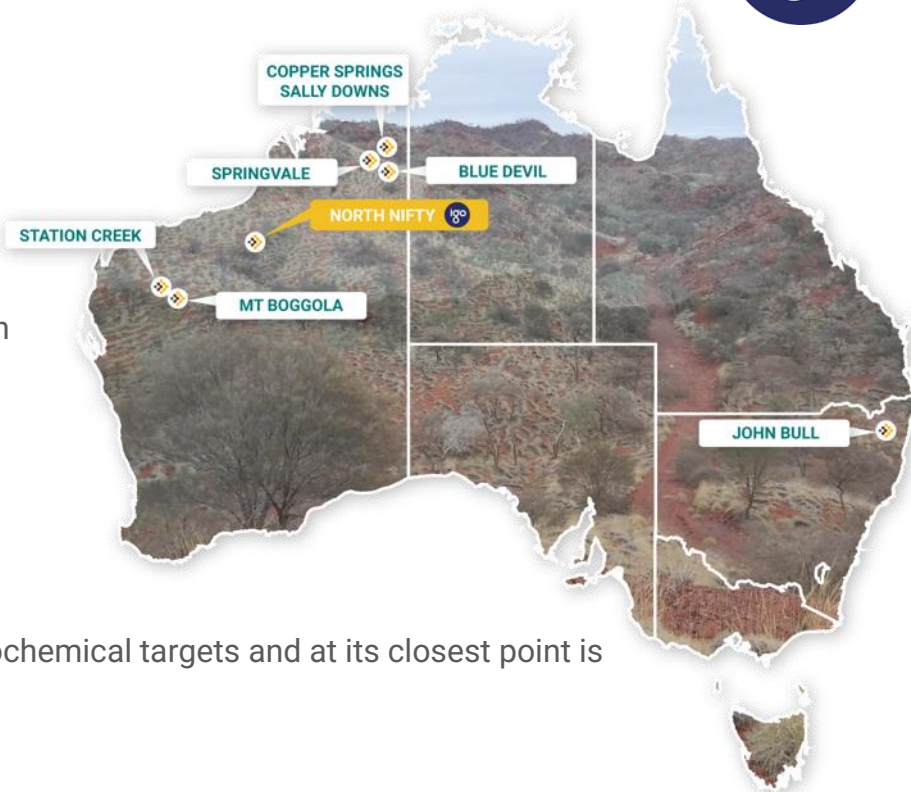
- The North Nifty Project is located approximately 250km northeast of Newman in northern Western Australia. The project comprises two granted Exploration Licences, E45/5506 and E45/5511, covering a combined area of 47km².

Mineralisation

- Contains several favourable geophysical and geochemical targets and at its closest point is just 8km from the world-class Nifty Copper Mine.

Joint Venture

- IGO to earn-in to TechGen’s North Nifty Project in the Paterson Orogen of WA.
- IGO may earn an 80% joint venture interest in the project by sole funding A\$500,000 of exploration within 4 years. TechGen’s 20% interest will be free carried until completion of a Feasibility Study.





Activity Timeline

	Q3 2024			Q4 2024			Q1 2025		
Project	Jul	Aug	Sep	Oct	Nov	Dec	Jan	Feb	Mar
Station Creek & Mt Boggola Antimony Copper/gold Uranium			Field geological mapping, rock chip sampling, auger sampling and uranium scintillometer surveys		Assays & data modelling			Heritage	Drill Testing
Kimberley Copper & Gold Lead & Zinc			Helicopter EM Blue Devil Copper Springs Sally Downs		AEM data modelling Geological mapping		Assays & modelling	Heritage	Drill testing
John Bull Gold -NSW					Acquisition Model IP EM	Stage 3 RC Drilling		Assays	Stage 4 RC Drilling



TECHGEN METALS
LIMITED

Contact Details

ASHLEY HOOD

MANAGING DIRECTOR

E: ashley.hood@techgenmetals.com.au

P: 0427 268 999

ANDREW JONES

TECHNICAL DIRECTOR

E: andrew.jones@techgenmetals.com.au

P: 0439 994 004

Address:

683 Murray Street, West Perth WA 6005

PO Box 901, West Perth WA 6872

Email: admin@techgenmetals.com.au

Website: techgenmetals.com.au

