

Press Release

19 March 2020



West African Resources Pours First Gold at Sanbrado

West African Resources Limited ('West African' or the 'Company', ASX: WAF) is pleased to announce it has poured first gold at its Sanbrado Gold Project, Burkina Faso, on Wednesday 18th of March, 2020.



Highlights

- Gold bars weighing 23.9 kg (768 troy oz) poured in the first smelt on site
- 75,000t ore at 1.5 g/t Au has been processed since start up
- Process plant has exceeded nameplate capacity for the past seven days of production
- All critical spares and reagents are on site and no process interruptions are forecast
- Processing plant and power station fully operational
- Open-pit ore stockpiles building with 250,000t at 1.5 g/t Au on the ROM pad
- First underground development ore mined and stockpiled, ready to process
- Visible gold exposed outside of the mine plan in underground development drive
- More than 3,000,000 hours worked LTI free

West African Executive Chairman Richard Hyde commented:

"This is a major milestone for West African Resources and marks the beginning of a new phase in the WAF story. To successfully transition from an exploration company to a gold producer is without doubt a great achievement for all involved. I would like to thank WAF's owners' team and all consultants, contractors and other stakeholders for their hard work and support over the last four years to bring Sanbrado from discovery into production."

Project Update

Construction and Commissioning Activities

On Wednesday the 18th of March, 2020 the Sanbrado project poured its maiden gold bars weighing 23.9 kg (768 troy oz). Construction and commissioning activities are complete in all areas and the project has recently passed 3,000,000 hours worked LTI free. The process plant mill throughput is already meeting nameplate capacity. At the time of reporting 75,000t at 1.5 g/t Au has been processed through the Sanbrado plant, with indicative metallurgical recoveries over 90%.

The Company would like to thank WAF's Owners Team and key contractors and consultants; ECG, Outotec, Lycopodium, Knight Piesold, Enikon, EERIE BF, PSS, Kanazoe and Sogea Satom for their hard work and dedication.

Photo 1: Richard Hyde and WAF team on site with first gold bars



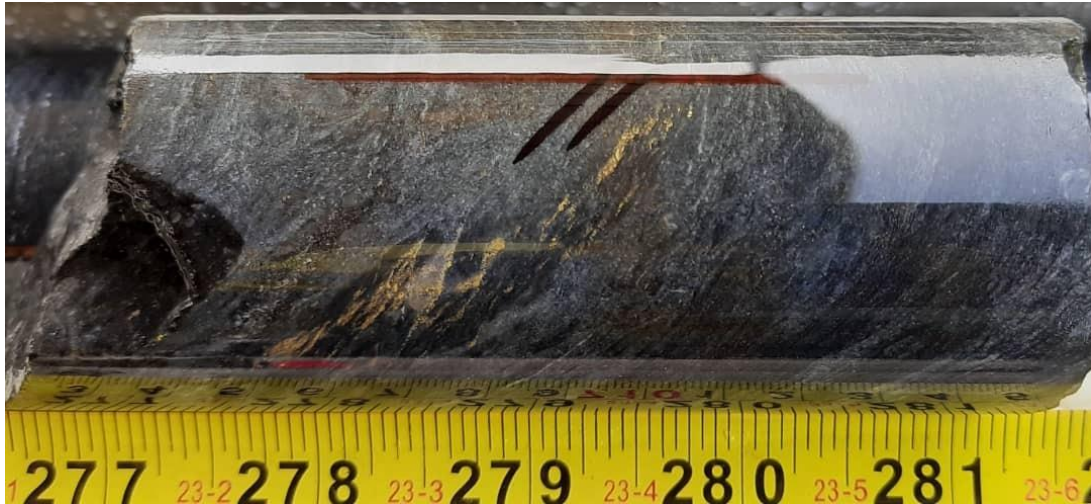
Open Pit Mining

Open-pit mining has ramped up mining activities and continues at both the M5 and M1 South pits, with double day/night shifts ongoing. Currently there are 250,000 tonnes of oxide ore on the ROM pad at an average grade of 1.5 g/t gold, which is reconciling well with grade control models.

Underground Mining

Underground development continues to progress to schedule. The first development crosscut on the 2120 level (300m below surface) has intercepted visible gold north of the mine plan. Some 1,200t of underground ore has been mined and stockpiled ready for processing. Grade control drilling of the first panel on the 2120 level has intercept visible gold, assays are pending.

Photo 2: Photo of underground drill core from grade control drilling



COVID 19 Emergency Response Plan and Operational Readiness

Since early February the Company has been following Western Australia Health Department guidelines for the Covid 19 global pandemic and has been updating staff and contractors regularly as the situation unfolds. At the time of reporting no staff or contractors have tested positive to Covid 19 nor has there been a suspected case.

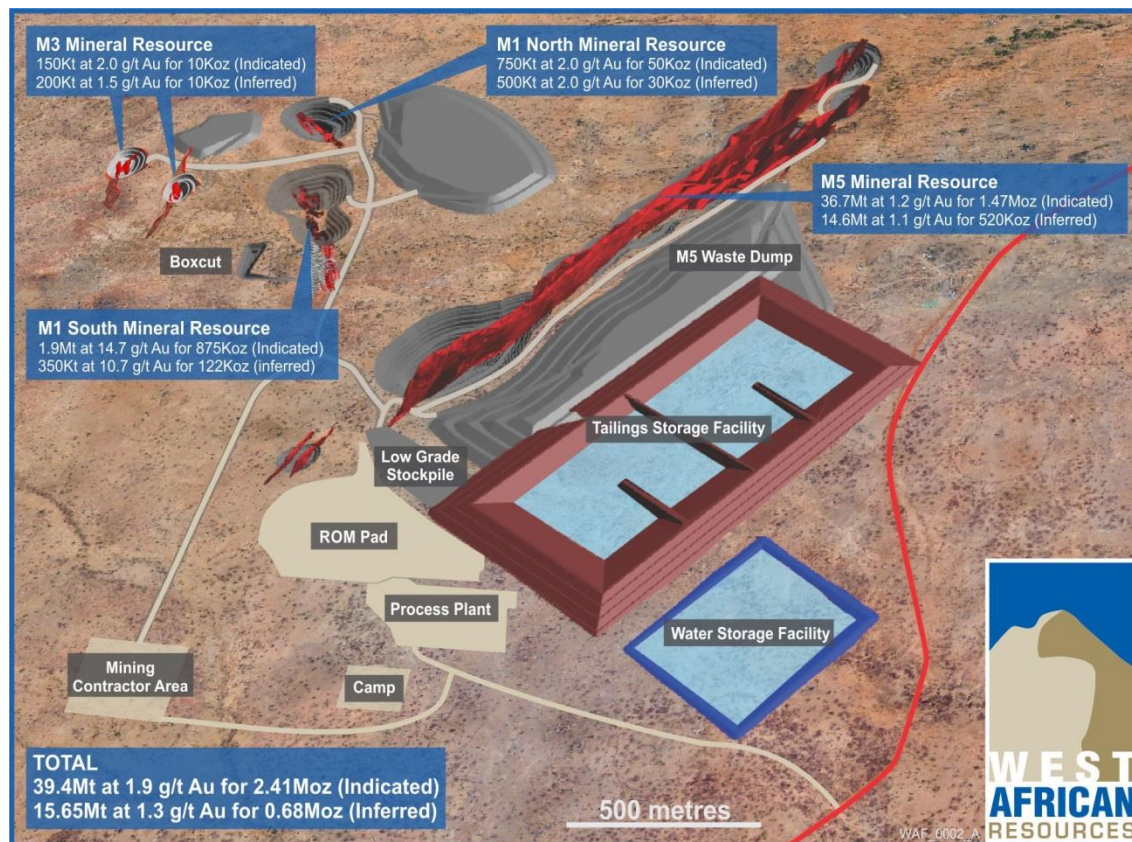
WAF executive and site management have recently undertaken a Covid 19 risk assessment workshop on site at Sanbrado. WAF's site management team includes key people that worked through the Ebola crisis in Guinea in 2014-15. WAF medical staff are monitoring the temperature of all people entering site and will implement a self-isolation policy for anyone suspected of being Covid 19 positive. Site management have prepared an isolation block in camp for any suspected cases and have qualified medical personnel and sufficient supplies to deal with a Covid 19 situation.

From an operational perspective, all key reagents and consumables are on site for continuous gold production for the next three to six months. The newly commissioned fuel farm is currently receiving regular fuel deliveries from fuel supplier Oryx Burkina Faso and is expected to be filled to capacity within the next week.

About West African Resources

West African Resources Limited (ASX: WAF) announced the results of its updated Feasibility Study for the Sanbrado Gold Project in Burkina Faso in an announcement titled "West African to produce 300Koz gold in Year 1 at Sanbrado" on 16 April 2019. The study envisages an initial 10-year mine life, including 6.5 years of underground mining, with Probable Reserves to 1.7 million ounces (21.6Mt at 2.4g/t gold). The project will have average annual production over the first 5 years of mine life of 217,000 ounces gold and a 14-month post-tax pay back on US\$186 million pre-production capital costs. Project economics are robust, with AISC of <US\$600/oz over first 5 years and US\$650 over life of mine. Year 1 production is anticipated to be over 300,000oz gold from underground and open pit ores, at All-In Sustaining Costs of less than US\$500/oz. West African is fully funded with construction underway and first gold pour scheduled in early Q2 2020.

The Company confirms that it is not aware of any new information or data that materially affects the information included in the original market announcement titled "West African to produce 300Koz gold in Year 1 at Sanbrado" on 16 April 2019 and that all material assumptions and technical parameters underpinning the estimates of forecast financial information derived from the production targets, and the resource estimate, as outlined in that announcement, continue to apply and have not materially changed.



Competent Persons Statement

Information in this announcement that relates to exploration results and exploration targets is based on, and fairly represents, information and supporting documentation prepared by Mr Richard Hyde, a Director, who is a Member of The Australian Institute of Mining and Metallurgy and Australian Institute of Geoscientists. Mr Hyde has sufficient experience which is relevant to the style of mineralisation and type of deposit under consideration and to the activity which he is undertaking to qualify as a Competent Person (or "CP") as defined in the 2012 Edition of the Australasian Code for Reporting of Exploration Results, Mineral Resources and Ore Reserves (the JORC Code) and a Qualified Person under Canadian National Instrument 43-101. Mr Hyde has reviewed the contents of this news release and consents to the inclusion in this announcement of all technical statements based on his information in the form and context in which they appear.

Information in this announcement that relates to mineral resources is based on, and fairly represents, information and supporting documentation prepared by Mr Brian Wolfe, an independent consultant specialising in mineral resource estimation, evaluation and exploration. Mr Wolfe is a Member of the Australian Institute of Geoscientists. Mr Wolfe has sufficient experience which is relevant to the style of mineralisation and type of deposit under consideration and to the activity which he is undertaking to qualify as a Competent Person (or "CP") as defined in the 2012 Edition of the Australasian Code for Reporting of Exploration Results, Mineral Resources and Ore Reserves (the JORC Code) and a Qualified Person under Canadian National Instrument 43-101. Mr Wolfe has reviewed the contents of this news release and consents to the inclusion in this announcement of all technical statements based on his information in the form and context in which they appear.

Information in this announcement that relates to open pit ore reserves is based on, and fairly represents, information and supporting documentation prepared by Mr Stuart Cruickshanks, an employee of the Company. Mr Cruickshanks is a Fellow of the Australian Institute of Mining and Metallurgy. Mr Cruickshanks has sufficient experience which is relevant to the style of mineralisation and type of deposit under consideration and to the activity which he is undertaking to qualify as a Competent Person (or "CP") as defined in the 2012 Edition of the Australasian Code for Reporting of Exploration Results, Mineral Resources and Ore Reserves (the JORC Code) and a Qualified Person under Canadian National Instrument 43-101. Mr Cruickshanks has reviewed the contents of this news release and consents to the inclusion in this announcement of all technical statements based on his information in the form and context in which they appear.

Information in this announcement that relates to underground ore reserves is based on, and fairly represents, information and supporting documentation prepared by Mr Peter Wade, an independent specialist mining consultant. Mr Wade is a Fellow of the Australian Institute of Mining and Metallurgy. Mr Wade has sufficient experience which is relevant to the style of mineralisation and type of deposit under consideration and to the activity which he is undertaking to qualify as a Competent Person (or "CP") as defined in the 2012 Edition of the Australasian Code for Reporting of Exploration Results, Mineral Resources and Ore Reserves (the JORC Code) and a Qualified Person under Canadian National Instrument 43-101. Mr Wade has reviewed the contents of this news release and consents to the inclusion in this announcement of all technical statements based on his information in the form and context in which they appear.

Forward Looking Information

This news release contains "forward-looking information" within the meaning of applicable Canadian and Australian securities legislation, including information relating to West African's future financial or operating performance that may be deemed "forward looking". All statements in this news release, other than statements of historical fact, that address events or developments that West African expects to occur, are "forward-looking statements". Forward-looking statements are statements that are not historical facts and are generally, but not always, identified by the words "expects", "does not expect", "plans", "anticipates", "does not anticipate", "believes", "intends", "estimates", "projects", "potential", "scheduled", "forecast", "budget" and similar expressions, or that events or conditions "will", "would", "may", "could", "should" or "might" occur. All such forward-looking statements are based on the opinions and estimates of the relevant management as of the date such statements are made and are subject to important risk factors and uncertainties, many of which are beyond West African's ability to control or predict. Forward-looking statements are necessarily based on estimates and assumptions that are inherently subject to known and unknown risks, uncertainties and other factors that may cause actual results, level of activity, performance or achievements to be materially different from those expressed or implied by such forward-looking statements.

In the case of West African Resources Ltd, these facts include their anticipated operations in future periods, the expected enhancement to project economics following optimisation studies, planned exploration and development of its properties including project development commencing in Q4 2018 with an 18 month construction schedule, and plans related to its business and other matters that may occur in the future, including the availability of future funding for the development of the project. This information relates to analyses and other information that is based on expectations of future performance and planned work programs. Statements concerning mineral resource and ore reserve estimates may also be deemed to constitute forward-looking information to the extent that they involve estimates of the mineralisation that will be encountered if a mineral property is developed.

As well, all of the results of the feasibility study constitute forward-looking information, including estimates of internal rates of return, net present value, future production, estimates of cash cost, assumed long term price for gold, proposed mining plans and methods, mine life estimates, cashflow forecasts, metal recoveries, and estimates of capital and operating costs.

Furthermore, with respect to this specific forward-looking information concerning the development of the Sanbrado Gold Project, the company has based its assumptions and analysis on certain factors that are inherently uncertain. Uncertainties include among others:

- i. the adequacy of infrastructure;
- ii. unforeseen changes in geological characteristics;
- iii. metallurgical characteristics of the mineralization;
- iv. the price of gold;
- v. the availability of equipment and facilities necessary to complete development and commence operations;
- vi. the cost of consumables and mining and processing equipment;
- vii. unforeseen technological and engineering problems;
- viii. accidents or acts of sabotage or terrorism;
- ix. currency fluctuations;
- x. changes in laws or regulations;
- xi. the availability and productivity of skilled labour;
- xii. the regulation of the mining industry by various governmental agencies; and
- xiii. political factors.

This release also contains references to estimates of Mineral Resources and Mineral Reserves. The estimation of Mineral Resources is inherently uncertain and involves subjective judgments about many relevant factors. Mineral Resources that are not Mineral Reserves do not have demonstrated economic viability. The accuracy of any such estimates is a function of the quantity and quality of available data, and of the assumptions made and judgments used in engineering and geological interpretation (including estimated future production from the project, the anticipated tonnages and grades that will be mined and the estimated level of recovery that will be realized), which may prove to be unreliable and depend, to a certain extent, upon the analysis of drilling results and statistical inferences that may ultimately prove to be inaccurate. Mineral Resource estimates may have to be re-estimated based on:

- i. fluctuations in gold price;
- ii. results of drilling;
- iii. metallurgical testing and other studies;
- iv. proposed mining operations, including dilution;
- v. the evaluation of mine plans subsequent to the date of any estimates; and
- vi. the possible failure to receive, or changes in, required permits, approvals and licenses.

Mineral Reserves are also disclosed in this release. Mineral Reserves are those portions of Mineral Resources that have demonstrated economic viability after taking into account all mining factors. Mineral Reserves may, in the future, cease to be a Mineral Reserve if economic viability can no longer be demonstrated because of, among other things, adverse changes in commodity prices, changes in law or regulation or changes to mine plans. Due to rounding, numbers presented throughout this and other documents may not add up precisely to the totals provided and percentages may not precisely reflect the absolute figures.

Forward-looking information is subject to a variety of known and unknown risks, uncertainties and other factors which could cause actual events or results to differ from those expressed or implied by the forward-looking information, including, without limitation: exploration hazards and risks; risks related to exploration and development of natural resource properties; uncertainty in West African's ability to obtain funding; gold price fluctuations; recent market events and conditions; risks related to the uncertainty of mineral resource calculations and the inclusion of inferred mineral resources in economic estimation; risks related to governmental regulations; risks related to obtaining necessary licenses and permits; risks related to their business being subject to environmental laws and regulations; risks related to their mineral properties being subject to prior unregistered agreements, transfers, or claims and other defects in title; risks relating to competition from larger companies with greater financial and technical resources; risks relating to the inability to meet financial obligations under agreements to which they are a party; ability to recruit and retain qualified personnel; and risks related to their directors and officers becoming associated with other natural resource companies which may give rise to conflicts of interests. This list is not exhaustive of the factors that may affect West African's forward-looking information. Should one or more of these risks and uncertainties materialise, or should underlying assumptions prove incorrect, actual results may vary materially from those described in the forward-looking information.

West African's forward-looking information is based on the reasonable beliefs, expectations and opinions of their respective management on the date the statements are made and West African does not assume any obligation to update forward looking information if circumstances or management's beliefs, expectations or opinions change, except as required by law. For the reasons set forth above, investors should not place undue reliance on forward-looking information. For a complete discussion with respect to West African, please refer to West African's website www.westafricanresources.com, financial statements and other filings all of which are filed on the ASX.