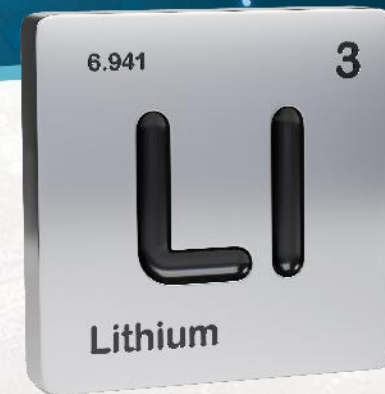




# AMEC WA Investor Series Investor Presentation

February 2024



# Disclaimer & Forward-Looking Statements



This presentation (Presentation) has been prepared by Premier1 Lithium Ltd. ACN 637 198 531 (Premier1 Lithium or the Company), is current at the date of this Presentation and contains information in a summary form and should be read in conjunction with Premier1 Lithium's other periodic announcements available at Premier1 Lithium.com. The information presented should not be used for any purpose other than gaining general knowledge of the Company. The presentation is not a recommendation to invest in Premier1 Lithium and the information presented does not purport to include all information that a person may require in order to decide to invest in Premier1 Lithium. To the maximum extent permitted by law, each Premier1 Lithium Party (Premier1 Lithium or any of its respective directors, officers, employees, affiliates, partners, consultants, agents, representatives or advisers (including, without limitation, advisers and their related bodies corporate, shareholders or affiliates, and any of their respective officers, directors, employees, affiliates, partners, representatives, consultants, agents or advisers)) expressly disclaims any and all liability (whether direct, indirect, consequential or contingent), including, without limitation, any liability arising out of fault or negligence on the part of any person, for any loss, expenses, damages or costs arising from the use of information contained in this Presentation including representations or warranties or in relation to the accuracy or completeness of the information, statements, opinions or matters, express or implied, contained in, arising out of or derived from, or for omissions from, this Presentation including, without limitation, any financial information, any estimates, projections, forecasts or forward-looking statements and any other derived financial information. Anyone proposing to rely on or use such information should independently verify and check the accuracy, completeness, reliability and suitability of the information and should obtain independent and specific advice from appropriate professionals or experts. Nothing in this Presentation should be construed as either an offer to sell or a solicitation to buy or sell Premier1 Lithium's securities.

## **Future performance and forward-looking statements**

This Presentation contains or may contain certain 'forward-looking statements' and comments about future events, including in relation to Premier1 Lithium's business, plans and strategies and expected trends in the industry in which Premier1 Lithium currently operates. Forward-looking statements can generally be identified by the use of words such as 'expect', 'anticipate', 'estimate', 'intend', 'believe', 'guidance', 'should', 'could', 'may', 'will', 'predict', 'plan' and other similar expressions. Indications of, and guidance or outlook regarding, future performance are also forward-looking statements. Forward-looking statements involve inherent risks, assumptions and uncertainties, both general and specific, and there is a risk that such predictions, forecasts, projections and other forward-looking statements will not be achieved. Forward looking statements are based on Premier1 Lithium's good faith assumptions as to the financial, market, regulatory and other relevant environments that will exist and affect the Company's business and operations in the future. A number of important factors could cause Premier1 Lithium's actual results to differ materially from the plans, objectives, expectations, estimates, targets and intentions expressed in such forward-looking statements, and many of these factors are beyond Premier1 Lithium's control. Forward-looking statements may prove to be incorrect, and circumstances may change, and the contents of this Presentation may become outdated as a result. Premier1 Lithium does not give any assurance that the assumptions will prove to be correct. Readers should note that any past performance is given for illustrative purposes only and should not be relied on as (and is not) an indication of the Company's views on its future financial performance or condition. Past performance of the Company cannot be relied on as an indicator of (and provides no guidance as to) future performance including future share price performance. Except as required by law or regulation, Premier1 Lithium undertakes no obligation to provide any additional or updated information whether as a result of new information, future events or results or otherwise.

## **Competent Person's Statement**

Information in this Presentation that relates to exploration targets, exploration results and mineralisation is based on and fairly reflects information compiled by and conclusions derived by Mr Robert Rowe, who is a member of The Australasian Institute of Mining and Metallurgy (AusIMM) and a Registered Professional Geoscientist (RPG) in the field of Mineral Exploration with the Australian Institute of Geoscientists (AIG). Mr Rowe is a full-time employee and Chief Operating Officer of SensOre and is engaged by Premier1 Lithium under a Demerger Implementation Deed between the companies. Mr Rowe has sufficient experience that is relevant to the style of mineralisation and type of deposit under consideration and to the activity being undertaken to qualify as a Competent Person as defined in the 2012 Edition of the Australasian Code for Reporting of Exploration Results, Mineral Resources and Ore Reserves (JORC Code). Mr Rowe consents to the inclusion in this Presentation of the matters based on his information in the form and context in which it appears.

## **Authorisation**

This Presentation has been authorised for release by the Premier1 Lithium Ltd Board.



# Corporate Snapshot

## Capital Structure and Financials as of 31 Jan 2024

**A\$7.0M**  
Market Cap

**A\$0.04**  
Share Price

**A\$3m**  
Raised<sup>1</sup>

**Nil**  
Debt

**174.6M**  
Shares Issued

## Shareholder Summary

Deutsche Rohstoff	19.9%
Previous SensOre shareholders	46%
New Placement Shareholders	34%

## Focus on Western Australia

1 wholly owned or optioned project and several Joint Venture projects



## Board

Nic Limb	Non-Executive Chairman
Anja Ehser	Non-Executive Director
Richard Taylor	CEO and Executive Director

<sup>1</sup> \$3m placement to new and existing institutional investors completed on 25 January 2024

# Premier1 Lithium: New Approach to Lithium Exploration



## INDUSTRY LEADING EXPLORATION

PLC prospect portfolio has been identified utilizing industry leading artificial intelligence (AI) and machine learning (ML) technologies



## WHOLLY OWNED PORTFOLIO

Flagship wholly owned or optioned Abbotts North Project with outcropping lithium bearing pegmatites



## JOINT VENTURE PARTNERS

Gateway Mining, Venture Minerals, Firetail Resources, LithGold Minerals



## POSITIVE RESULTS

Discovery of new pegmatite field within the Abbotts Greenstone Belt – over 1.5km of strike with 1.25% Li<sub>2</sub>O at the Buttamah Prospect

# Premier1 Lithium Portfolio

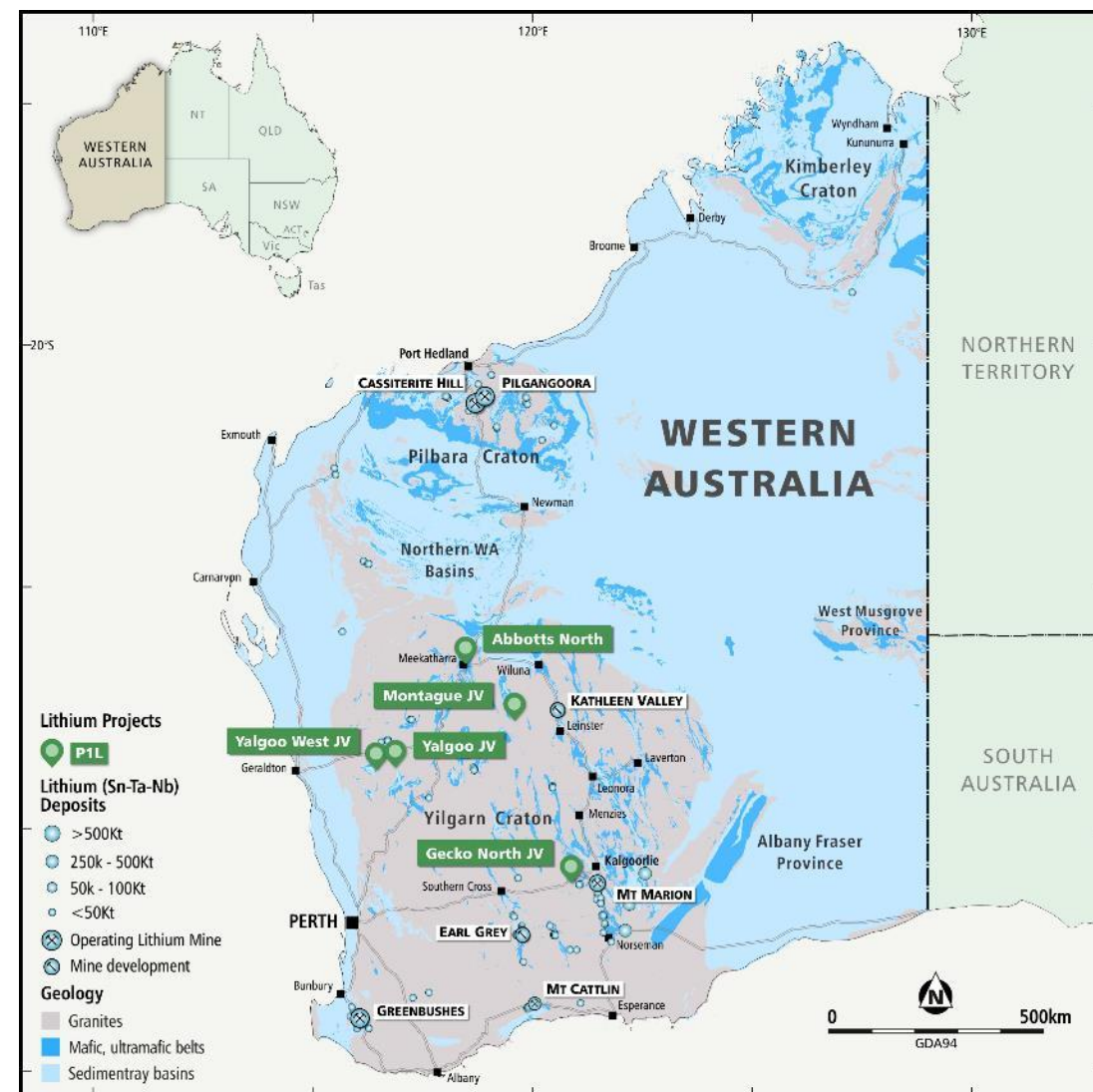
Premier1 Lithium has secured a portfolio of lithium rights in the best jurisdiction in the world for hard rock lithium

**Wholly owned or optioned flagship project:**

- Abbotts North (Buttamahia Prospect)

**Other Joint Ventures:**

- Yalgoo + Yalgoo West
- Montague
- Gecko North



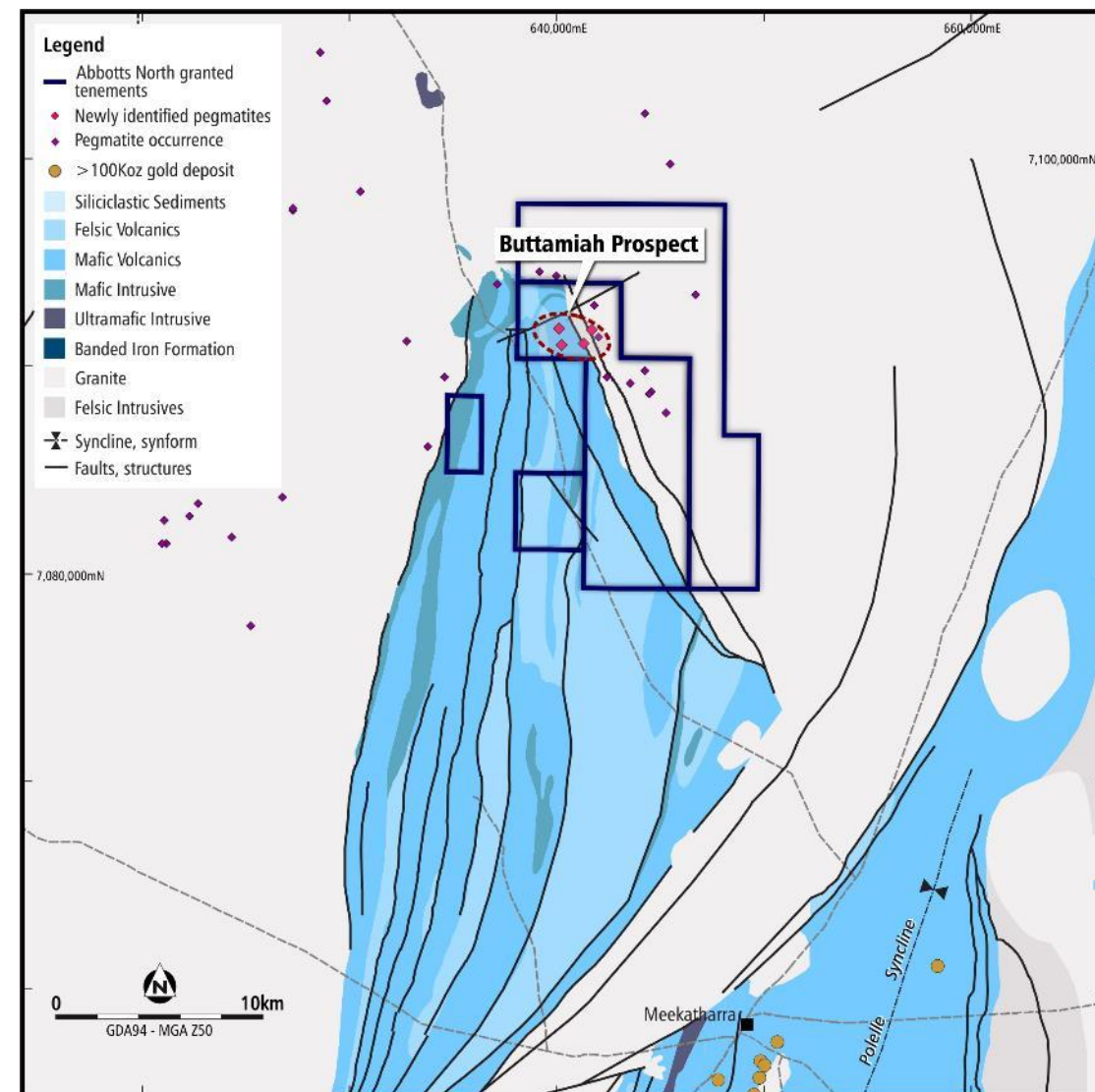


# Flagship Abbotts North Project

- Predicted target generated through machine learning
- Previously unrecognised Li potential within greenstone belt, no previous Li exploration
- Favourable mafic stratigraphy adjacent to an interpreted fertile granite
- GSWA and newly mapped pegmatites
- 3 granted EL's and 1 recent application

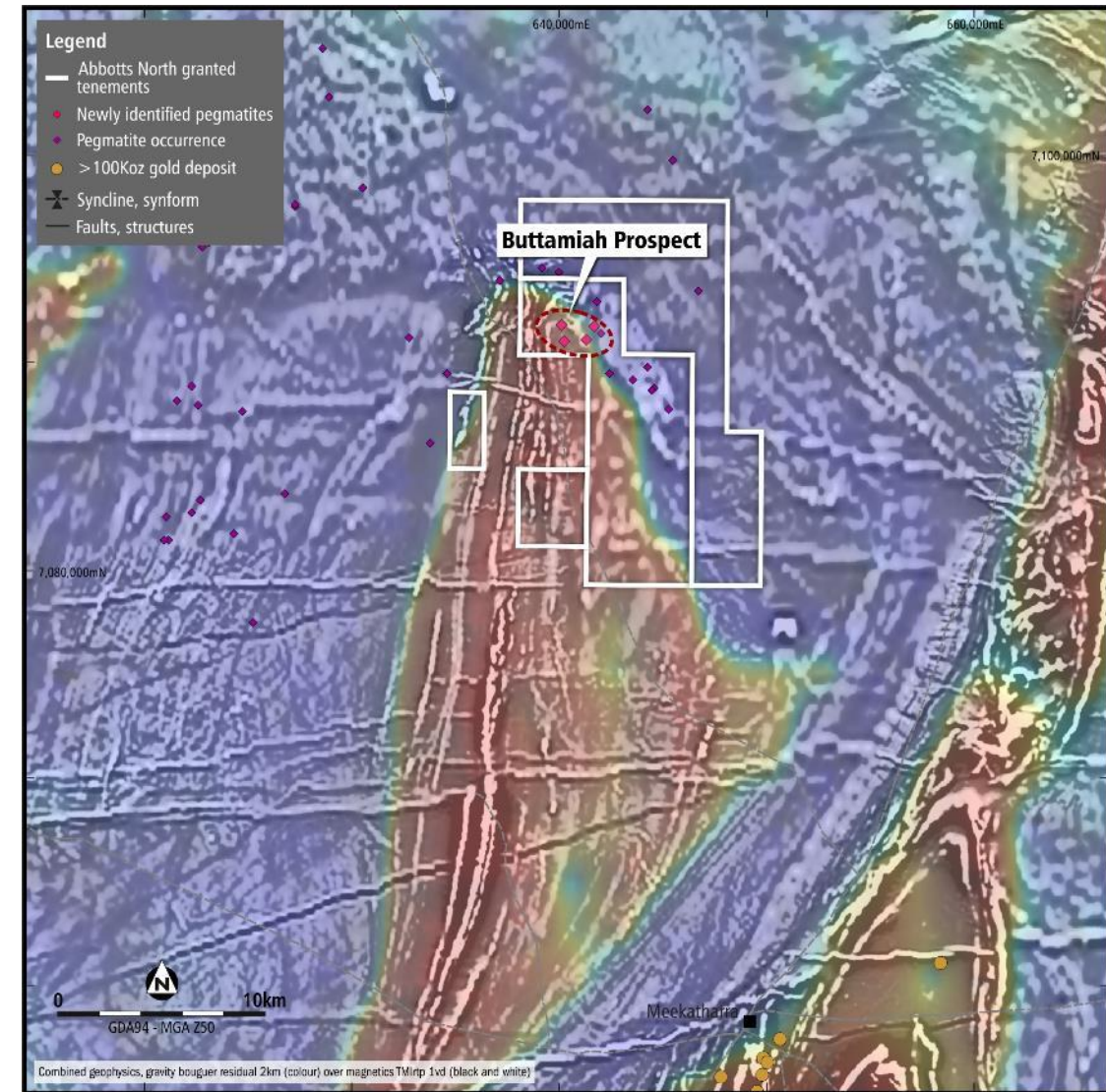
## Next steps

- Maiden RC drill program to start February 2024
- Extend fieldwork over entire licence package



# Flagship Abbotts North Project

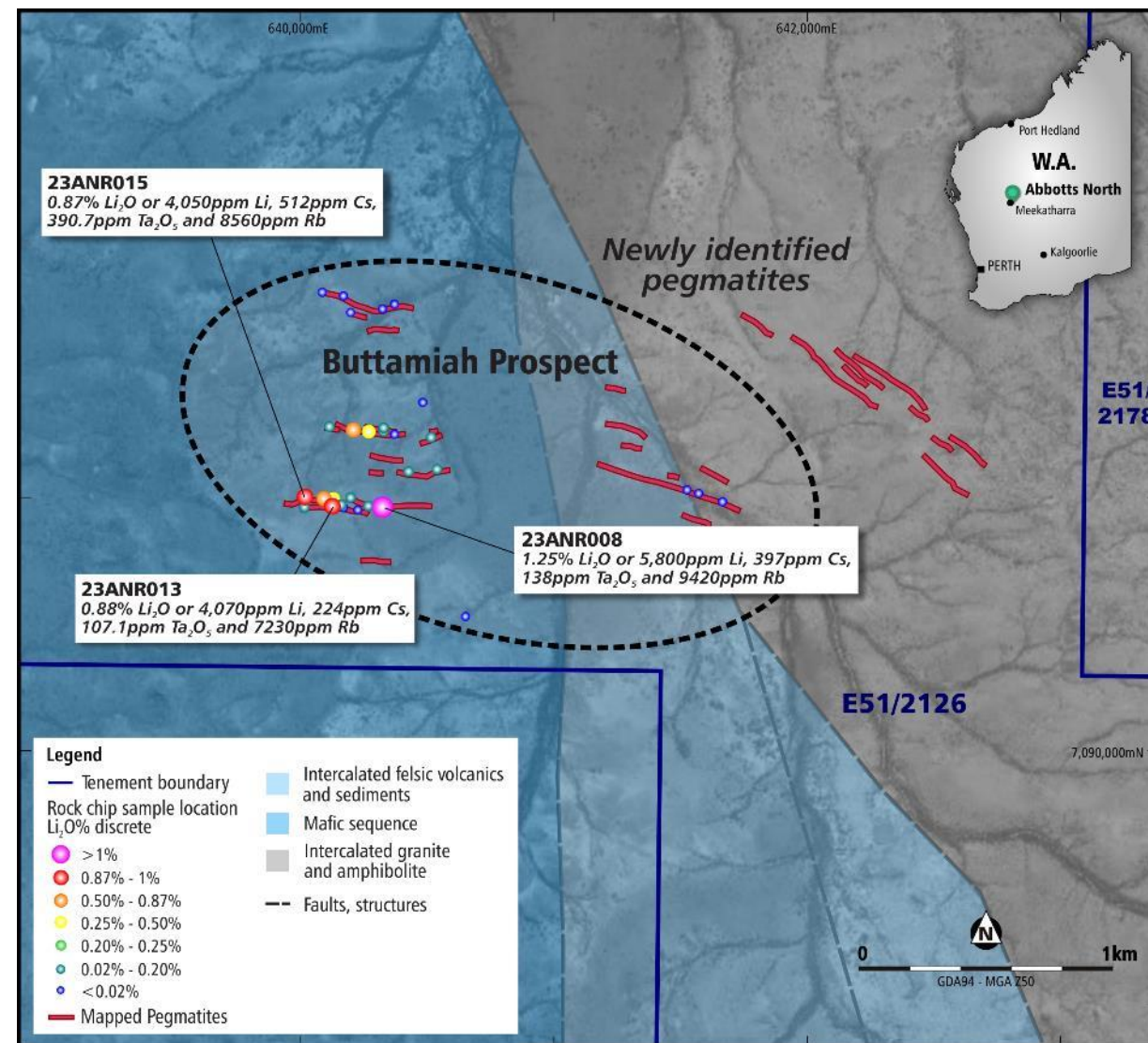
- Initial reconnaissance mapping and sampling identified a new pegmatite field within the greater Abbotts Greenstone Belt
- At least three separate pegmatite dyke units identified in the Buttamahia Prospect area





# Buttamiah Prospect

- Rock chip assays returned up to 1.25%  $\text{Li}_2\text{O}$  at the Buttamiah Prospect
- Pegmatites are on average 2m to 3m wide and consist of several parallel pegmatite dykes
- Individual pegmatites at least 350m in strike with main Buttamiah Prospect extending over ca. 1.5km





# Buttamiah Prospect

- LCT pegmatite units are strongly weathered and shallow colluvial cover is abundant indicating potential for additional pegmatites
- Fractionated LCT pegmatites are hosted within mafic amphibolite / metabasalt

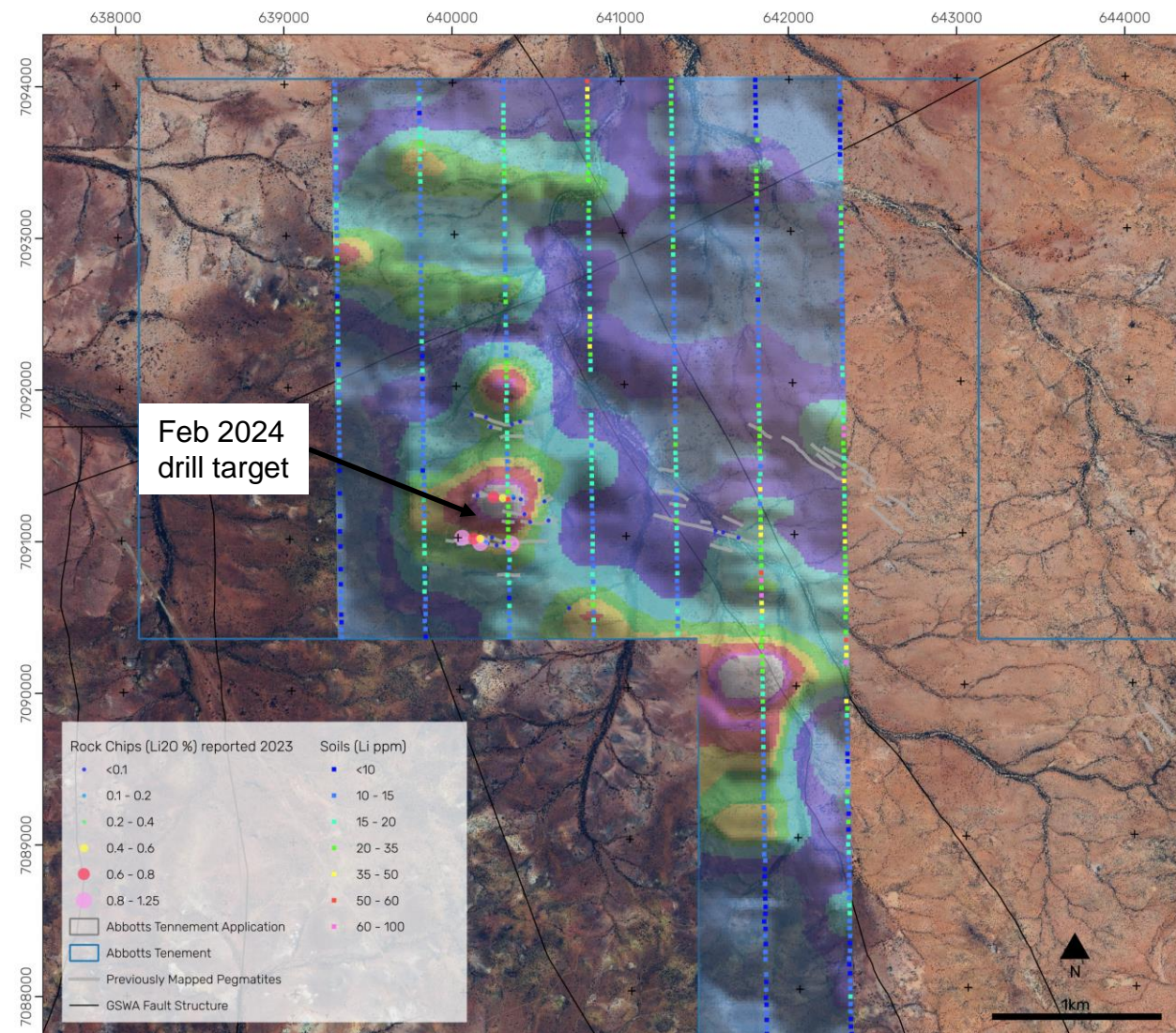




# Abbotts North – Licence Scale Potential

- Initial soil sampling identified several areas of similar tenure as found at the Buttamah Prospect with outcropping lithium bearing pegmatites
- Initial ground truthing of large soil anomaly in the southeast confirmed the presence of discrete sub-cropping pegmatites
- Follow up work planned on all soil anomalies to delineate further drill targets for 2024

Percentile Value	30	60	80	90	95	98	99	100
Factor Score	-0.40	0.28	0.80	1.07	1.25	1.50	1.61	1.77



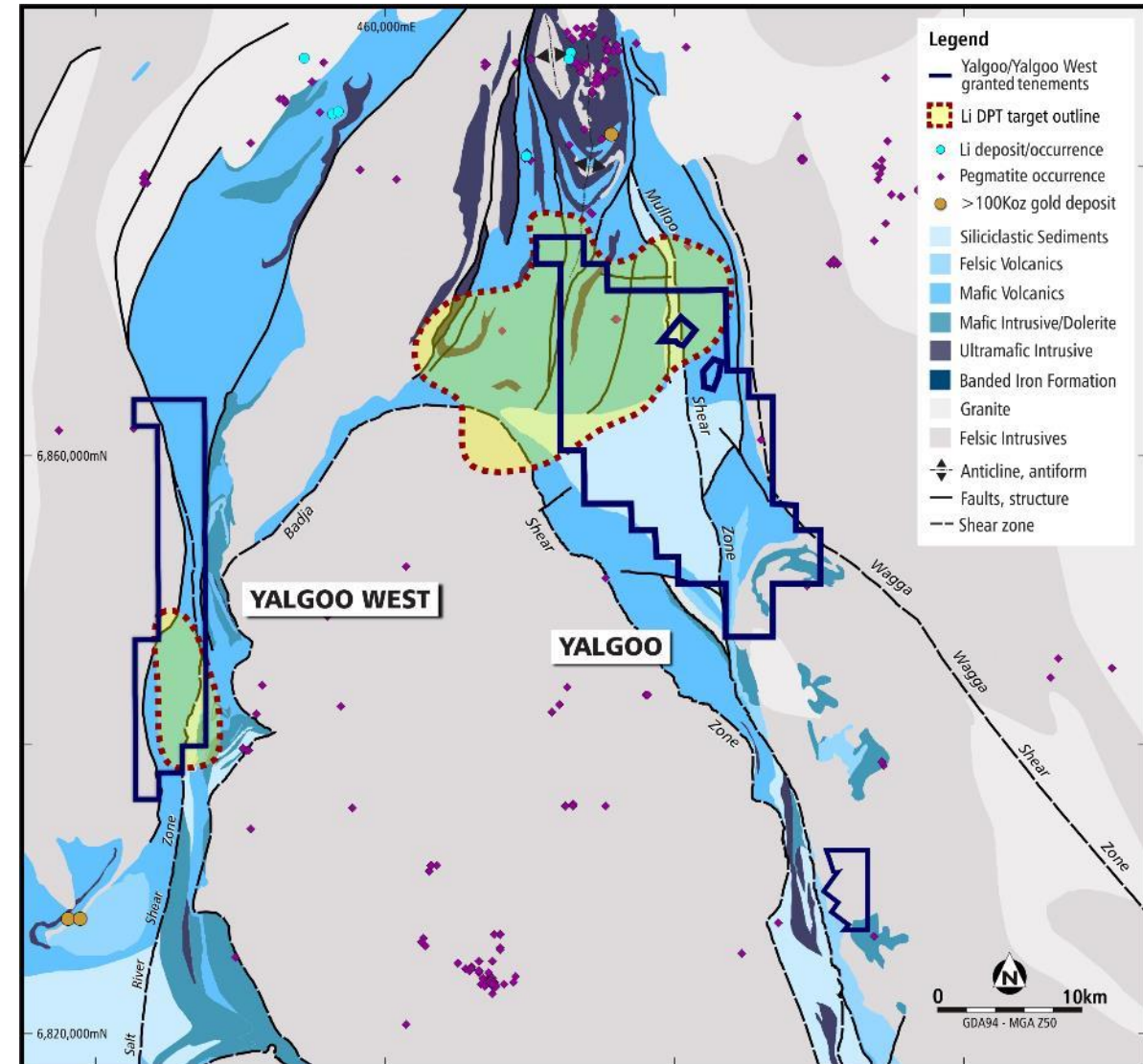


# Yalgoo & Yalgoo West Projects

- High Li prospectivity generated through machine learning
- Favourable area adjacent to emerging lithium pegmatite complex
- Significant VMS copper potential in the area
- Land access approvals in place
- P1L earning
  - 70% of All Mineral Rights (except REE) from Venture Minerals
  - 80% of Lithium Rights from Firetail Resources

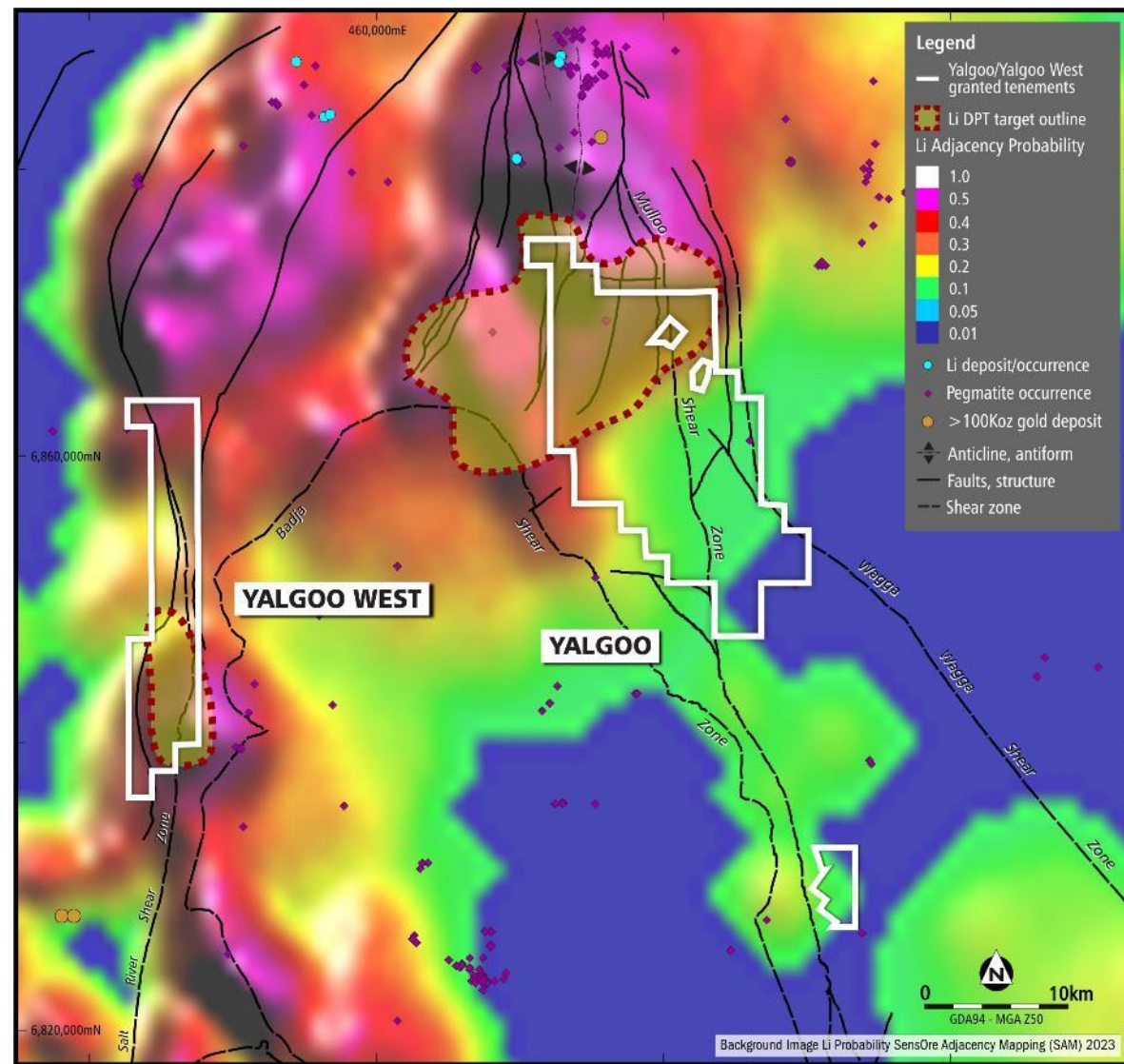
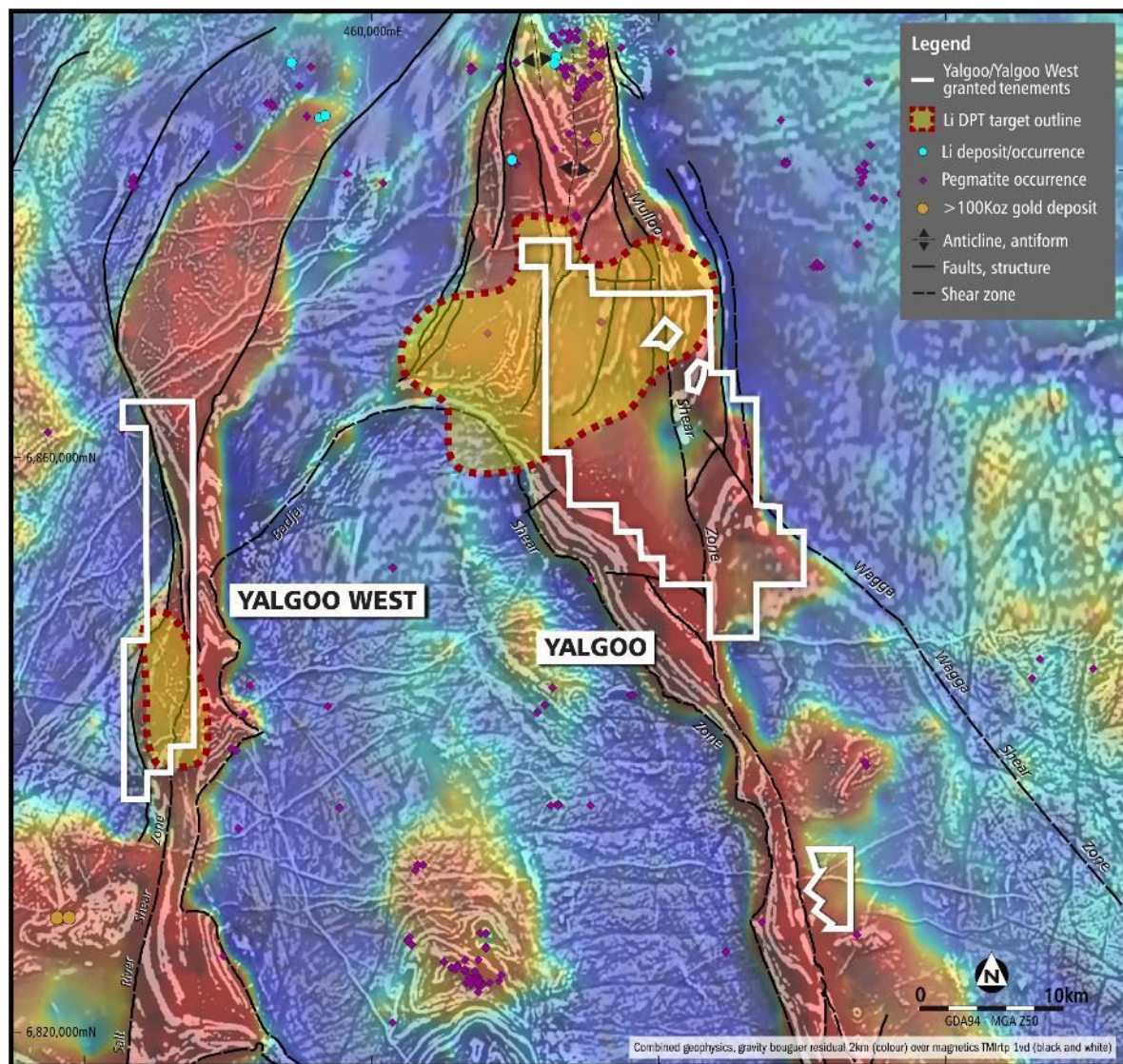
## Next phase

- Extensive fieldwork over ML target including pegmatite mapping and sampling, soil and auger geochemistry to delineate drill targets for H2 2024





# Yalgoo & Yalgoo West Projects – Large ML Targets



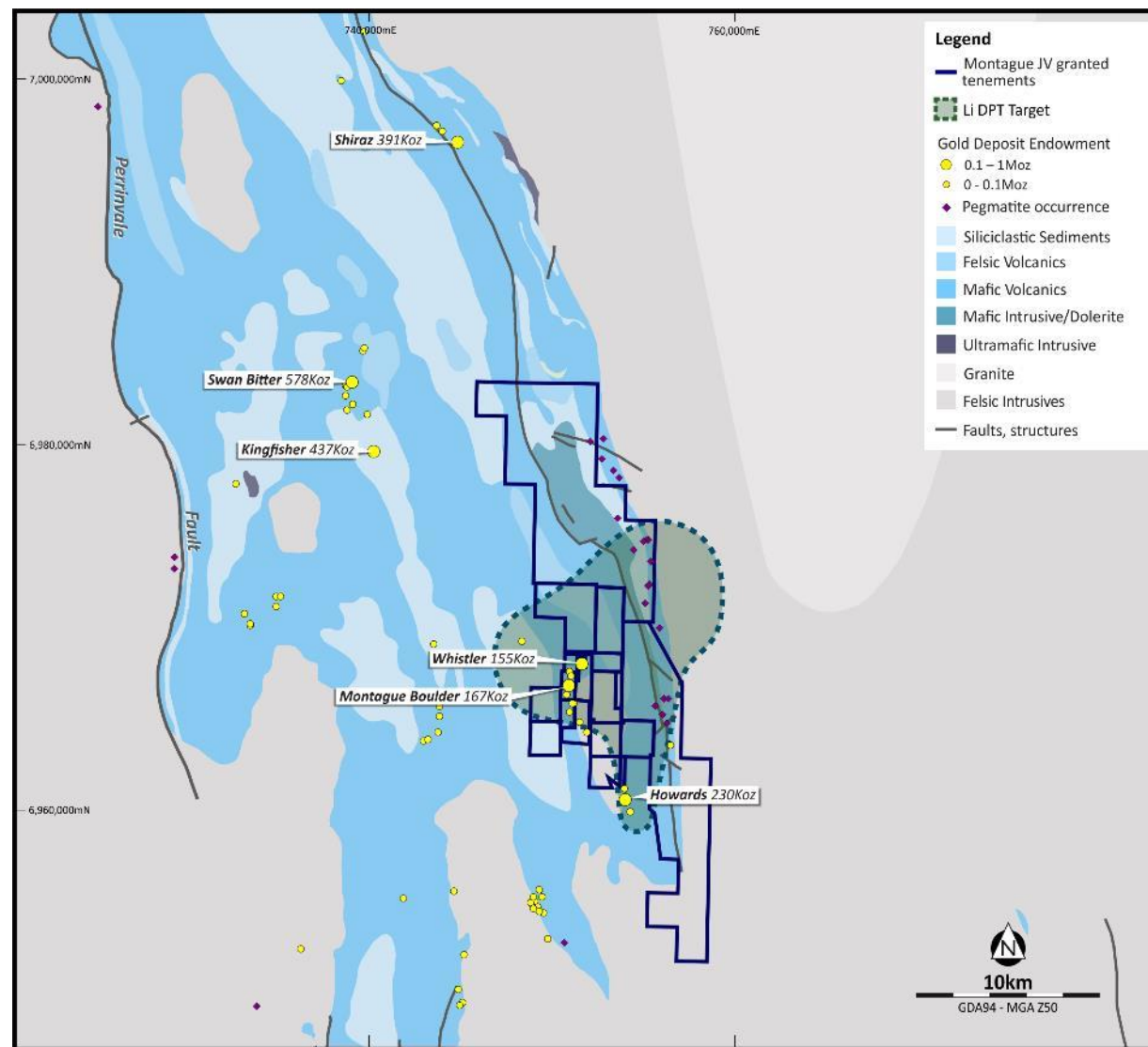


# Montague Project

- Large predicted target generated through machine learning
- Previously unrecognised Li potential within greenstone belt, no previous Li exploration
- GSWA and newly mapped pegmatites adjacent to the granite contact
- Contiguous package of historical mining leases
- Land access approvals in place
- P1L earning 80% of Lithium Rights from Gateway Mining

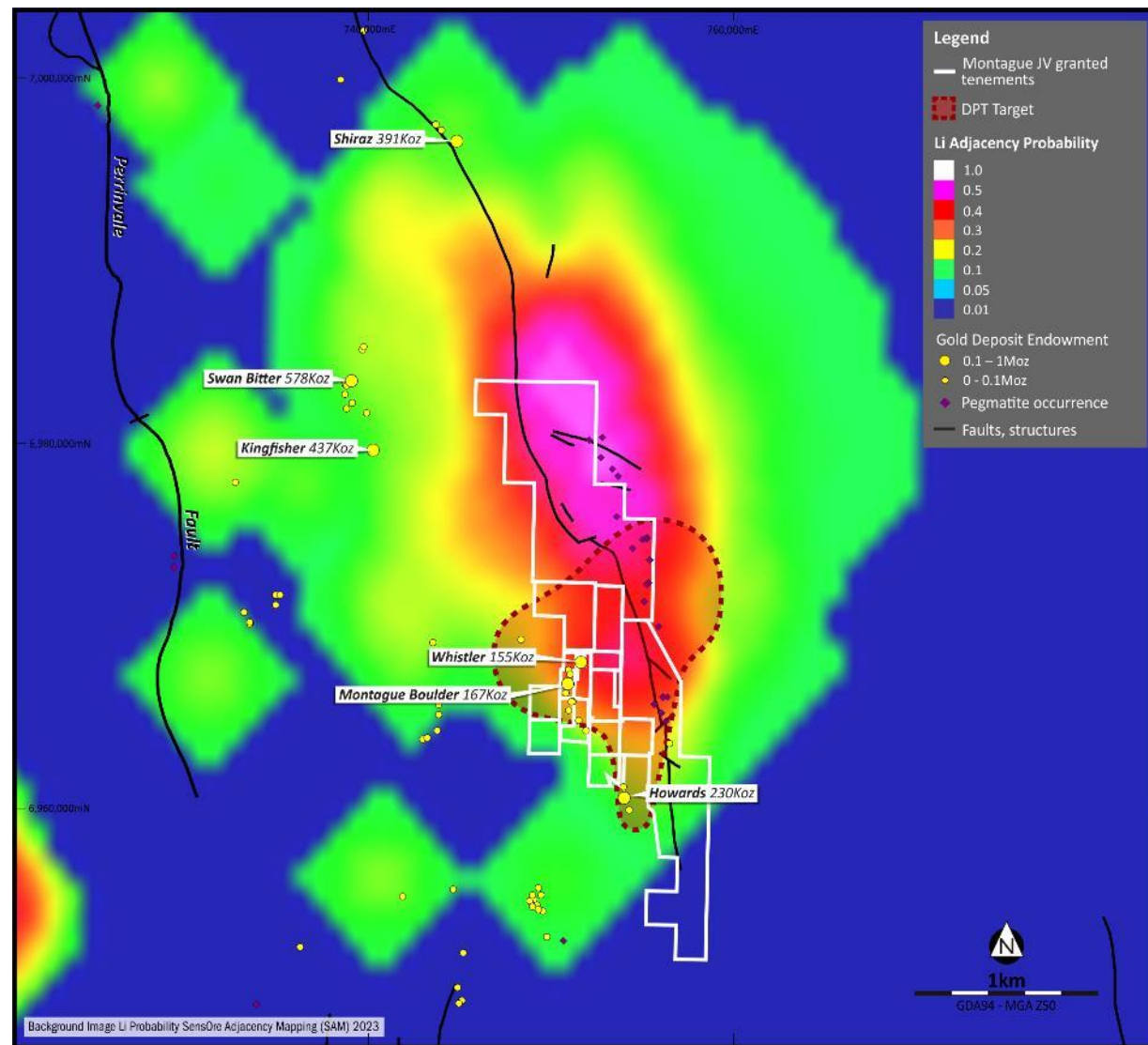
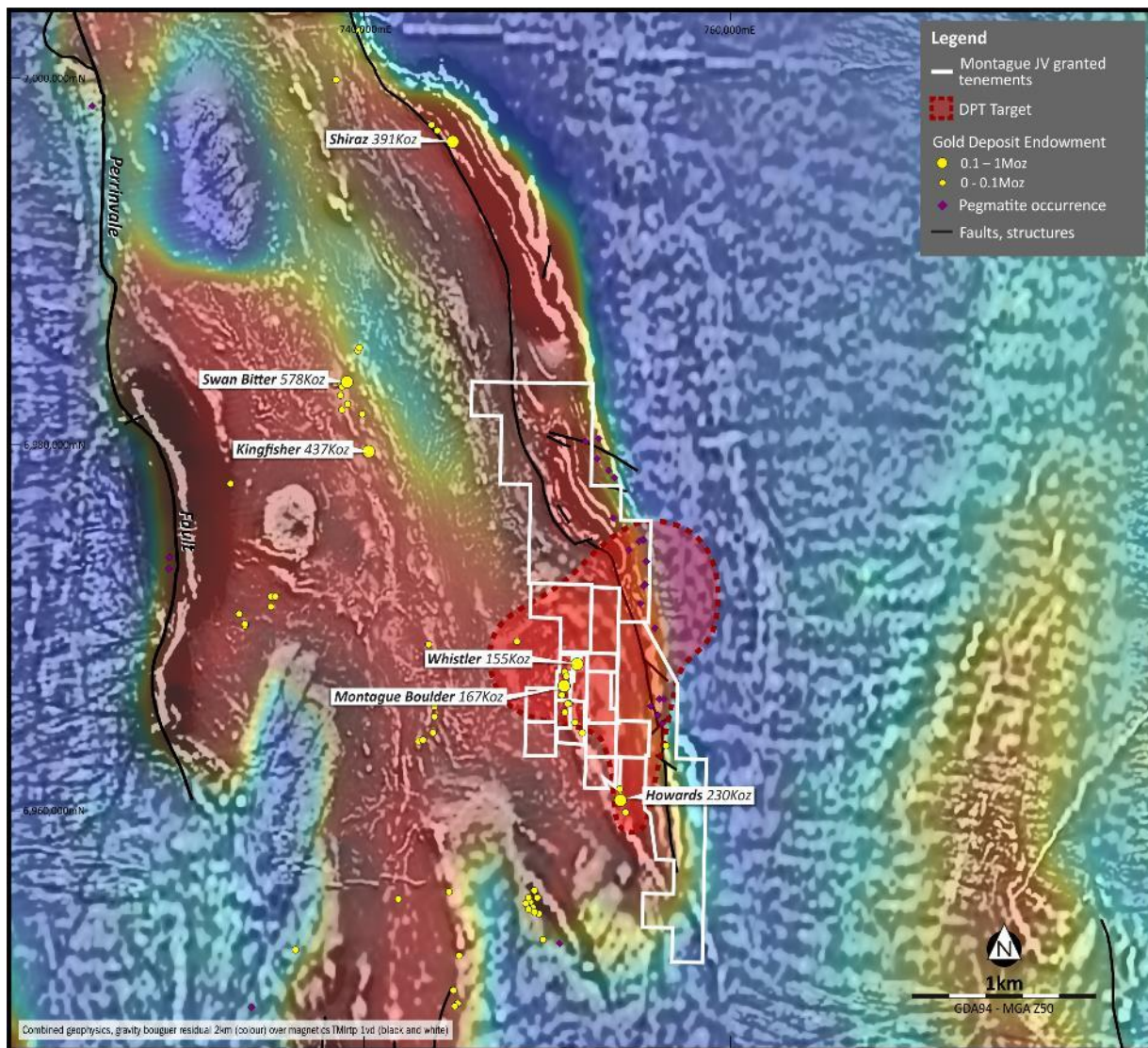
## Next steps

- Further pegmatite mapping and sampling including soil geochemistry to delineate drill targets for H2 2024





# Montague Project – Large ML Target





# Key Takeaways



- Premier1 Lithium has secured a portfolio of highly prospective lithium rights in the best jurisdiction in the world for hard rock lithium
- Drilling on Flagship Abbots North project to start in February 2024
- Extensive fieldwork planned over large ML lithium targets at Montague and Yalgoo projects in 1H 2024
- Access to unique lithium prospectivity dataset over WA via SensOre for further lithium project evaluations



## **PREMIER1 Lithium**

Level 3, 10 Queen Street, Melbourne VIC 3000, Australia

---

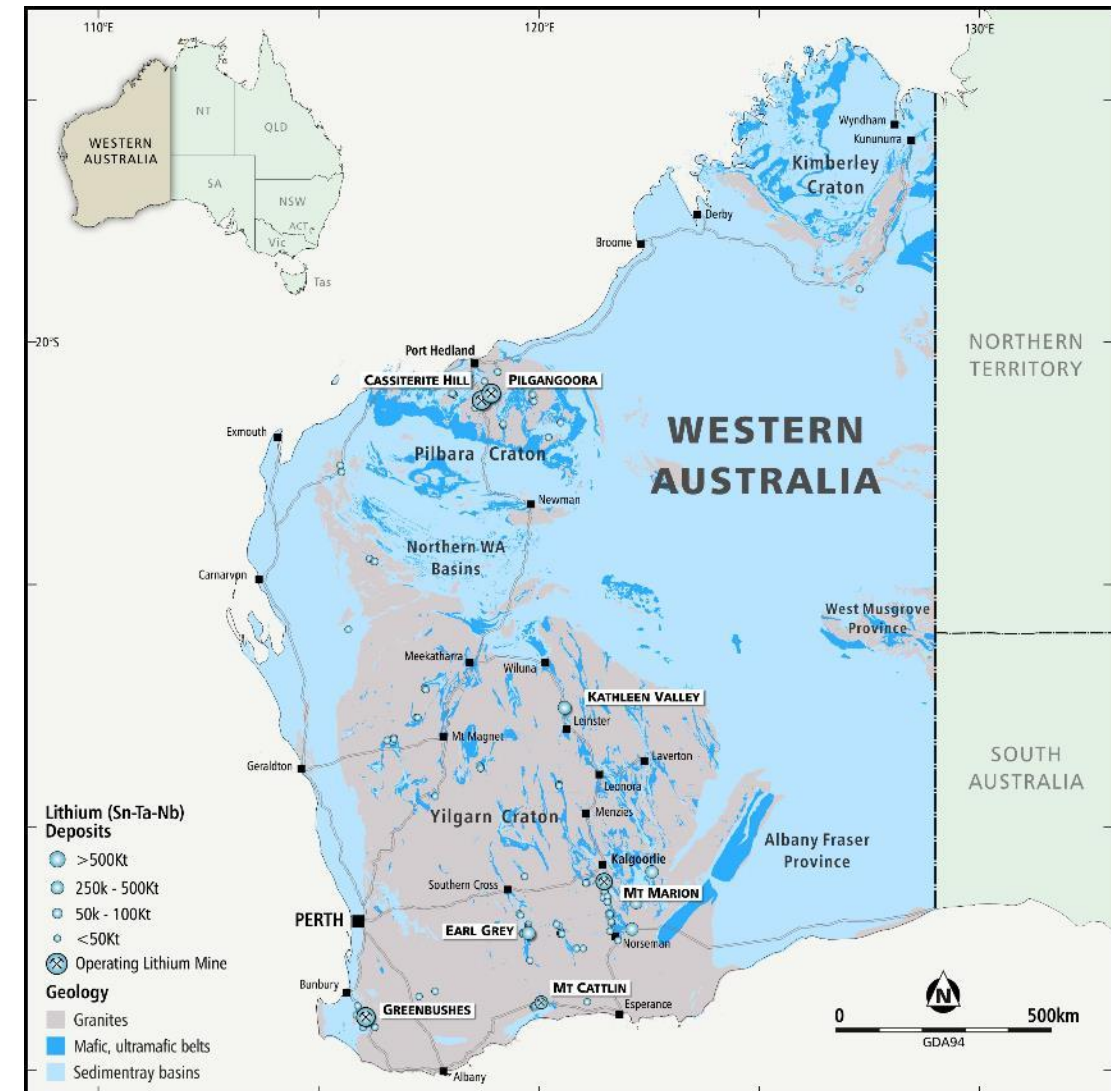
[info@premier1lithium.com.au](mailto:info@premier1lithium.com.au)

+61 3 9492 3843



# West Australia – Best Jurisdiction for Lithium Exploration

- Current Australian economic operating deposits are predominantly historical tin and tantalum deposits now exploited for lithium; spodumene is the dominant economic mineral containing Li
- Archean cratons in Western Australia are the most prospective, with some of the world's largest lithium bearing LCT pegmatite deposits
- Deposits and occurrences confined to **greenstone belt hosts**, close to granite contacts
- Proterozoic belts, such as the Gascoyne region, now emerging as potential terranes for economic lithium deposits



# LCT Pegmatite geochemical zonation

- LCT pegmatites have well understood and predictable mineralogical and geochemical zonation
- Non-economic quantities of cesium, tin, tantalum rubidium used as indicator and zonation and vectoring in mapping LCT pegmatites

