

## INVESTOR UPDATE

**ASX RELEASE**

24 July 2025

**LOCKSLEY RESOURCES LIMITED**

ACN 629 672 144

Level 8, London House 216 St  
Georges Terrace

Perth Western Australia 6000

Tel: +61 (08) 9481 0389

Facsimile: +61 (08) 9463 6103

**CONTACT**

Mr Nathan Lude

Non-Executive Chairperson

Tel: +61 8 9481 0389

**DIRECTORS**

Nathan Lude

Stephen Woodham

Julian Woodcock

Bevan Tarratt

**TICKER**

**ASX:** LKY / **OTCQB:** LKYRF

**SHARES ON ISSUE**

183,333,330



## INVESTOR WEBINAR PRESENTATION

**Locksley Resources Limited** (ASX: **LKY**) (OTCQB: **LKYRF**) ("LKY" or the Company) is pleased to invite shareholders to attend an investor webinar on MarketOpen Direct Connect to be held on Wednesday, 30th July 2025, 9:00am AWST/ 11:00am AEST.

Technical Director Julian Woodcock will present Locksley Resources Mojave Antimony and Rare Earth Project, USA and participate in a live Q&A with attendees.

This webinar can be viewed live via zoom & you register for FREE via the link below.

[https://us06web.zoom.us/webinar/register/WN\\_c-Qpkn\\_STbGO2CCQ1Z9k-g](https://us06web.zoom.us/webinar/register/WN_c-Qpkn_STbGO2CCQ1Z9k-g)

A recorded copy of the webinar will be made available following the event.

All questions need to be submitted by COB Tuesday 29th July to [info@locksleyresources.com.au](mailto:info@locksleyresources.com.au)

**This announcement has been authorised for release by the Board of Directors of Locksley Resources.**

For further information, please contact:

**Nathan Lude**

**Chairman, Locksley Resources Limited**

T: +61 8 9481 0389

**ASX RELEASE**

24 July 2025

**LOCKSLEY RESOURCES LIMITED**

ACN 629 672 144

Level 8, London House 216 St

Georges Terrace

Perth Western Australia 6000

Tel: +61 (08) 9481 0389

Facsimile: +61 (08) 9463 6103

**CONTACT**

Mr Nathan Lude

Non-Executive Chairperson

Tel: +61 8 9481 0389

**DIRECTORS**

Nathan Lude

Stephen Woodham

Julian Woodcock

Bevan Tarratt

**TICKER****ASX:** LKY / **OTCQB:** LKYRF**SHARES ON ISSUE**

183,333,330

**About Locksley Resources Limited**

Locksley Resources Limited is an ASX listed explorer focused on critical minerals and base metals, with assets in both the United States of America and Australia. The Company is actively advancing exploration across two key assets: the Mojave Project in California, targeting rare earth elements (REEs) and antimony, alongside the Tottenham Copper Gold Project in New South Wales. Locksley Resources aims to generate shareholder value through strategic exploration, discovery and development in highly prospective mineral regions.

**Mojave Project**

Located in the Mojave Desert, California, the Mojave Project comprises over 250 claims across two contiguous prospect areas, namely, the North Block/Northeast Block and the El Campo Prospect. The North Block directly abuts claims held by MP Materials, while El Campo lies along strike of the Mountain Pass Mine and is enveloped by MP Materials' claims, highlighting the strong geological continuity and exploration potential of the project area.

In addition to rare earths, the Mojave Project hosts the historic "Desert Antimony Mine", which last operated in 1937. Despite the United States currently having no domestic antimony production, demand for the metal remains high due to its essential role in defense systems, semiconductors, and metal alloys. With surface samples grading up to 46% Sb as well as silver up to 1,022 g/t Ag, the Desert Mine prospect represents one of the highest-grade known antimony occurrences in the U.S.

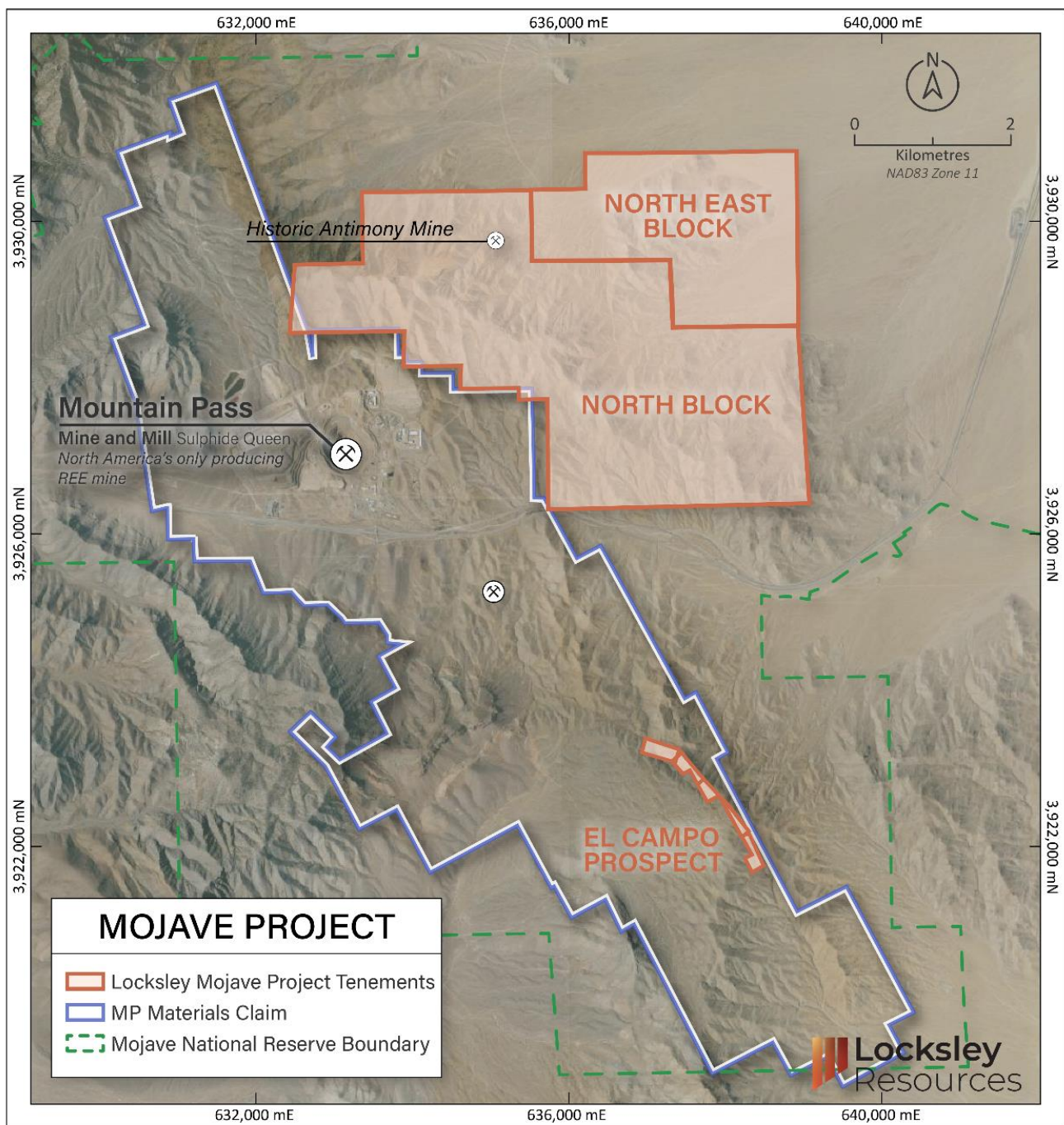
Locksley's North American position is further strengthened by rising geopolitical urgency to diversify supply chains away from China, the global leader in both REE & antimony production. With its maiden drilling program planned, the Mojave Project is uniquely positioned to align with U.S. strategic objectives around critical mineral independence and economic security.

**Tottenham Project**

Locksley's Australian portfolio comprises the advanced Tottenham Copper-Gold Project in New South Wales, focused on VMS-style mineralisation in a well-established mining region.

Locksley is committed to delivering value through discovery, development, and strategic partnerships, with a focus on securing access to U.S. aligned funding and downstream collaborations.





**MOJAVE PROJECT** – Location of the Mojave Project Blocks in south-eastern California, USA