



# AUSTRALIAN LITHIUM FOR A CLEAN ENERGY FUTURE

## INVESTOR PRESENTATION

**AUGUST 2023**

ASX | LPM



# Important INFORMATION

## Forward Looking Statements

Certain statements contained in this presentation, including information as to the future financial or operating performance of Lithium Plus Minerals Ltd ("Lithium Plus") and its projects, are forward looking statements. Such forward looking statements:

- include, among other things, statements regarding incomplete and uncertain proposals or targets, production and prices, operating costs and results, capital expenditures, and are or may be based on assumptions and estimates related to future technical, economic, market, political, social and other conditions;
- are necessarily based upon several estimates and assumptions that, while considered reasonable by Lithium Plus, are inherently subject to significant technical, business, economic, competitive, political and social uncertainties and contingencies; and
- involve known and unknown risks and uncertainties that could cause actual events or results to differ materially from estimated or anticipated events or results reflected in such forward-looking statements.

Lithium Plus disclaims any intent or obligation to update publicly any forward-looking statements, whether as a result of new information, future events or results or otherwise. The words "believe", "expect", "anticipate", "indicate", "contemplate", "target", "plan", "intends", "continue", "budget", "estimate", "may", "will", "schedule" and similar expressions identify forward looking statements. All forward looking statements made in this presentation are qualified by the foregoing cautionary statements. Recipients are cautioned that forward looking statements are not guarantees of future performance and accordingly investors are cautioned not to put undue reliance on forward looking statements due to the inherent uncertainty therein.

## Disclaimer

No representation or warranty, express or implied, is made as to the fairness, accuracy, completeness or correctness of the information, opinions and conclusions contained in this presentation. To the maximum extent permitted by law, none of Lithium Plus, its directors, employees or agents, nor any other person accepts any liability, including, without limitation, any liability arising out of fault of negligence, for any loss arising from the use of the information contained in this presentation. In particular, no representation or warranty, express or implied is given as to the accuracy, completeness or correctness, likelihood of achievement or reasonableness or any forecasts, prospects or returns contained in this presentation nor is any obligation assumed to update such information. Such forecasts, prospects or returns are by their nature subject to significant uncertainties and contingencies.

The information contained in this presentation is for informational purposes only and does not constitute an offer to issue, or arrange to issue, securities or other financial products. The information contained in this presentation is not investment or financial product advice and is not intended to be used as the basis for making an investment decision. The presentation has been prepared without considering the investment objectives, financial situation or needs of any particular person. Before making an investment decision, you should consider, with or without the assistance of a financial adviser, whether an investment is appropriate considering your particular investment needs, objectives and financial circumstances. Past performance is no guarantee of future performance.

## Competent Persons Statement

The information in this report that relates to Exploration Results, Mineral Resources or Reserves is based on information compiled by Dr. Jason Berton, who is a member of the Australian Institute of Mining and Metallurgy. Dr. Berton has sufficient mineral exploration experience which is relevant to the style of mineralisation and type of deposit under consideration and to the activity he is undertaking to qualify as a competent person as defined in the 2012 Edition of the "Australasian Code for reporting of Exploration Results, Mineral Resources and Ore Reserves" (JORC Code). Dr. Berton consents to the inclusion in this report of the matters and information discussed, based upon the form and context in which it appears. Lithium Plus confirms that all material assumptions and technical parameters underpinning the estimates in the relevant market announcements continue to apply and have not materially changed.

## Exploration by Other Explorers

This presentation contains information sourced from the reports of Other Explorers. References to the original reports are provided as footnotes where the information is cited in this presentation. Lithium Plus does not vouch for the accuracy of these reports. Lithium Plus has taken the decision to include this information as it is in the public domain and as we assess it to be of relevance to shareholders and investors.

# Lithium PLUS

## HIGH IMPACT LITHIUM EXPLORATION

Focused on five projects within two highly prospective areas

### Bynoe PROJECT AREA

**BYNOE** | Flagship project, neighbouring Core Lithium's Finnis Project

**WINGATE** | Known pegmatite district, limited historic exploration

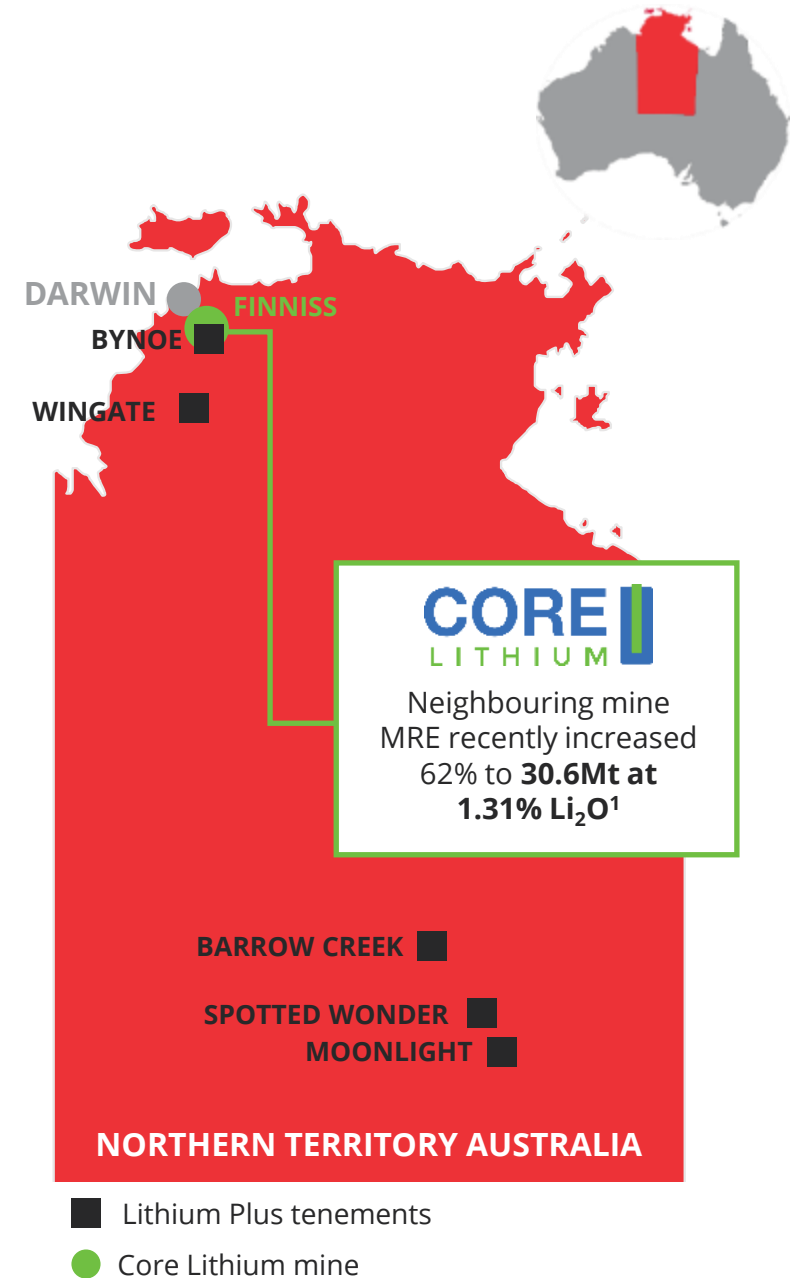
### Arunta PROJECT AREA

**BARROW CREEK** | Historic tin and tantalum production

**SPOTTED WONDER** | Proven lithium mineralisation

**MOONLIGHT** | Within the Harts Range Pegmatite Field

1. Refer to Core Lithium ASX release dated 18 April 2023. LPM is not aware of any new information or data that materially affects the information included in these ASX releases, LPM confirms that, to the best of its knowledge, all material assumptions and technical parameters underpinning the estimates in this presentation continue to apply and have not materially changed.



# Investment HIGHLIGHTS

1. **Premier** project location
2. **Outstanding** geological prospectivity
3. **Aggressive** drilling program
4. **Strategic** cornerstone investment
5. **Proven** board and management
6. **Direct leverage** to the battery transition

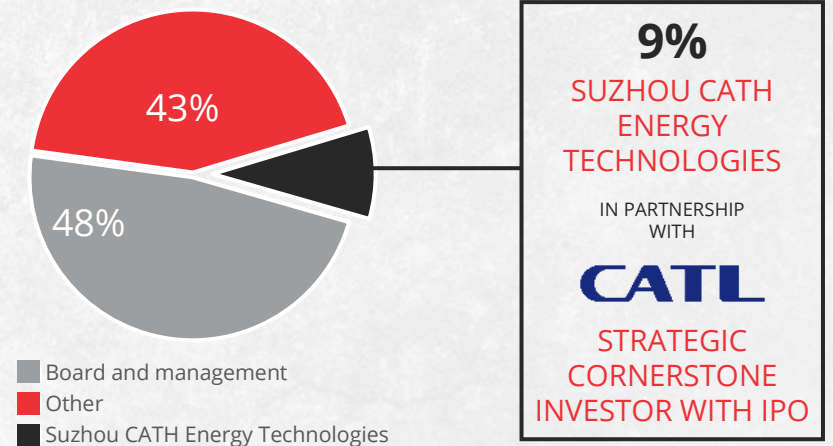
1. At 18 August 2023

2. At 30 May 2023

3. At 30 June 2023

## ASX:LPM

Share price <sup>1</sup>	A\$0.27
Total shares on issue <sup>2</sup>	112.34M
Market capitalisation	A\$30.33M
Cash <sup>3</sup>	A\$8.31M
Debt <sup>3</sup>	A\$0.00M
Enterprise value	A\$22.02M



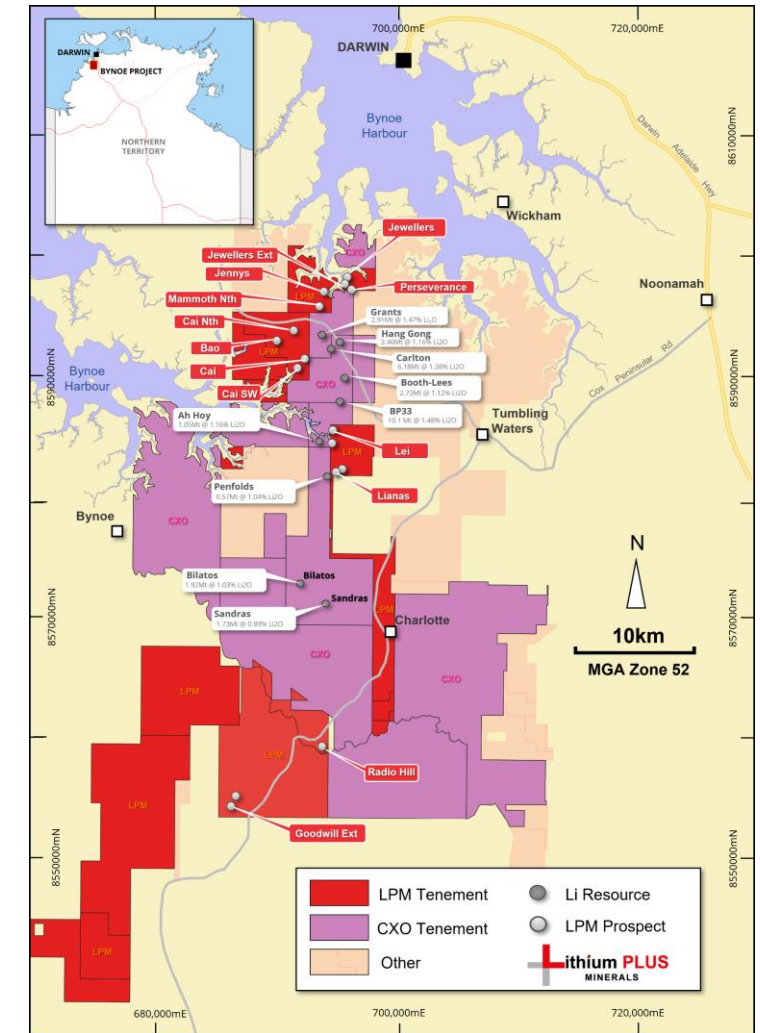


# 1 + Premier project LOCATION

NEXT TO CORE'S FINNISS MINE DEVELOPMENT AND 45KM FROM DARWIN

- **Australia is a prolific mining nation**, built on a history of safe, stable mineral extraction
- **Project area strategically positioned 45km from Darwin Port** which is Australia's nearest port to Asia and key gateway for Australasian trade
- Proximity to **Darwin town** provides significant **infrastructure availability**, with labour and supply route benefits
- Project is located in a **similar geological setting to Core Lithium's Finnis mine**, with a number of prospects directly along strike from the BP33 deposit
- Flagship BYNOE **PROJECT** **adjacent to Core's deposits** which benefited from a recent upgraded Mineral Resource Estimate
  - **30.6Mt @ 1.31% Li<sub>2</sub>O<sup>1</sup>**

1. Refer to Core Lithium ASX release dated 18 April 2023. LPM is not aware of any new information or data that materially affects the information included in these ASX releases, LPM confirms that, to the best of its knowledge, all material assumptions and technical parameters underpinning the estimates in this presentation continue to apply and have not materially changed.



# 1. Premier project LOCATION

PROVEN AREA WITH VERY HIGH FERTILE PEGMATITE HIT RATE

- Bynoe is a **proven area of lithium-rich pegmatites**
- Region contains **hundreds of historically known pegmatites**
- Core Lithium's **drilling hit rate** for fertile pegmatites **historically greater than 50%**<sup>2</sup>
- Total Mineral Resources at Core Lithium are a **combination of ten discrete mineralised areas**
- Highlights the importance of identifying and testing **multiple high-impact targets** for **cumulative resource growth**

CORE LITHIUM RESOURCE	MEASURED		INDICATED		INFERRED		TOTAL	
	TONNES (Mt)	Li <sub>2</sub> O (%)	TONNES (Mt)	Li <sub>2</sub> O (%)	TONNES (Mt)	Li <sub>2</sub> O (%)	TONNES (Mt)	Li <sub>2</sub> O (%)
Grants	1.93	1.50	0.61	1.49	0.37	1.27	2.91	1.47
BP33	2.85	1.46	4.09	1.53	3.17	1.45	10.1	1.48
Carlton	2.20	1.38	2.69	1.39	1.29	1.37	6.18	1.38
Hang Gong			1.51	1.18	1.95	1.14	3.46	1.16
Sandras			1.17	0.92	0.57	0.82	1.73	0.89
Lees			0.88	1.24	0.35	1.05	1.23	1.19
Ah Hoy			0.67	1.16	0.38	1.17	1.05	1.16
Booths			0.80	1.05	0.70	1.06	1.50	1.05
Bilatos					1.92	1.03	1.92	1.03
Penfolds					0.57	1.04	0.57	1.04
<b>Total<sup>1</sup></b>	<b>6.98</b>	<b>1.45</b>	<b>12.4</b>	<b>1.33</b>	<b>11.3</b>	<b>1.21</b>	<b>30.6</b>	<b>1.31</b>

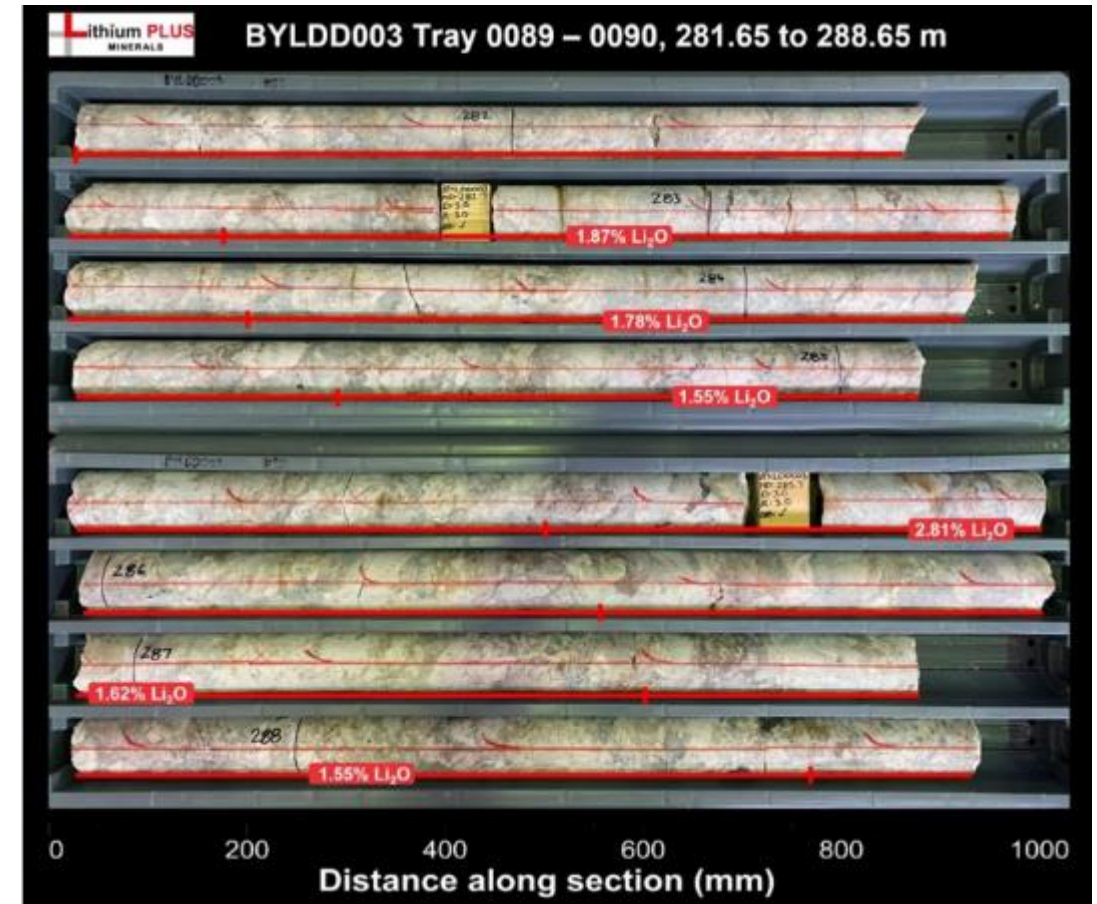
1. Refer to Core Lithium ASX release dated 18 April 2023, "Significant Increase to Finniss Mineral Resources". LPM is not aware of any new information or data that materially affects the information included in these ASX releases, LPM confirms that, to the best of its knowledge, all material assumptions and technical parameters underpinning the estimates in this presentation continue to apply and have not materially changed.

2. Refer to Core Lithium ASX release dated 28 June 2023 "AusIMM Lithium Conference Presentation"

# 2. Outstanding GEOLOGICAL PROSPECTIVITY

## INITIAL FOCUS ON FLAGSHIP BYNOE PROJECT

- Significant **lithium mineralisation identified at the Lei Prospect** in 2017
- Phase 1 drilling program **targeted Lei Prospect** with high grade spodumene mineralisation confirmed<sup>1</sup>
- Phase 2 diamond drilling completed at Lei **continued the extensional success** at depth and included the discovery of **a second lithium mineralised pegmatite** occurrence<sup>2</sup>
- **Both Lei mineralised pegmatites remain open at depth** with infill and extensional drilling to be incorporated in Phase 3 activities



1. Refer 18 October 2022 ASX Announcement "High grade lithium intercepts returned at Lei Prospect"

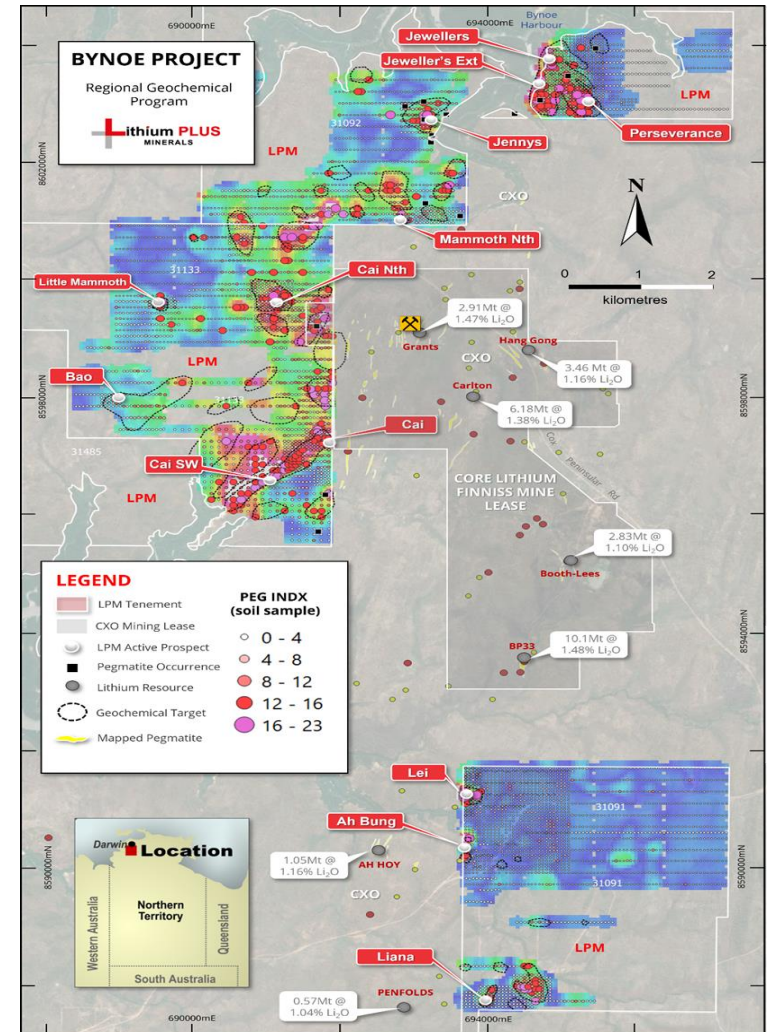
2. Refer 1 February 2023 ASX Announcement "Second shallow pegmatite discovered at Lei major pegmatite continues at depth"



# 2. Outstanding GEOLOGICAL PROSPECTIVITY

BYNOE PROJECT | HIGH NUMBER OF SOIL ANOMALIES DETECTED

- **Large scale Bynoe Project soil geochemistry program completed** with analysis and results **announced April 2023**
- **Over 3,700 soil geochemistry samples** taken across EL 31091, EL 31092 and EL 31133 under a program of broad systematic soil geochemistry grids at Bynoe in 2022
- Calibration of the soil geochemical results with known high grade Li mineralized pegmatite occurrences within the survey area indicate **Li-enriched pegmatites**
- **Numerous new pegmatite drilling targets** generated through an integration of geochemistry dataset and geological mapping along with ongoing structural analysis

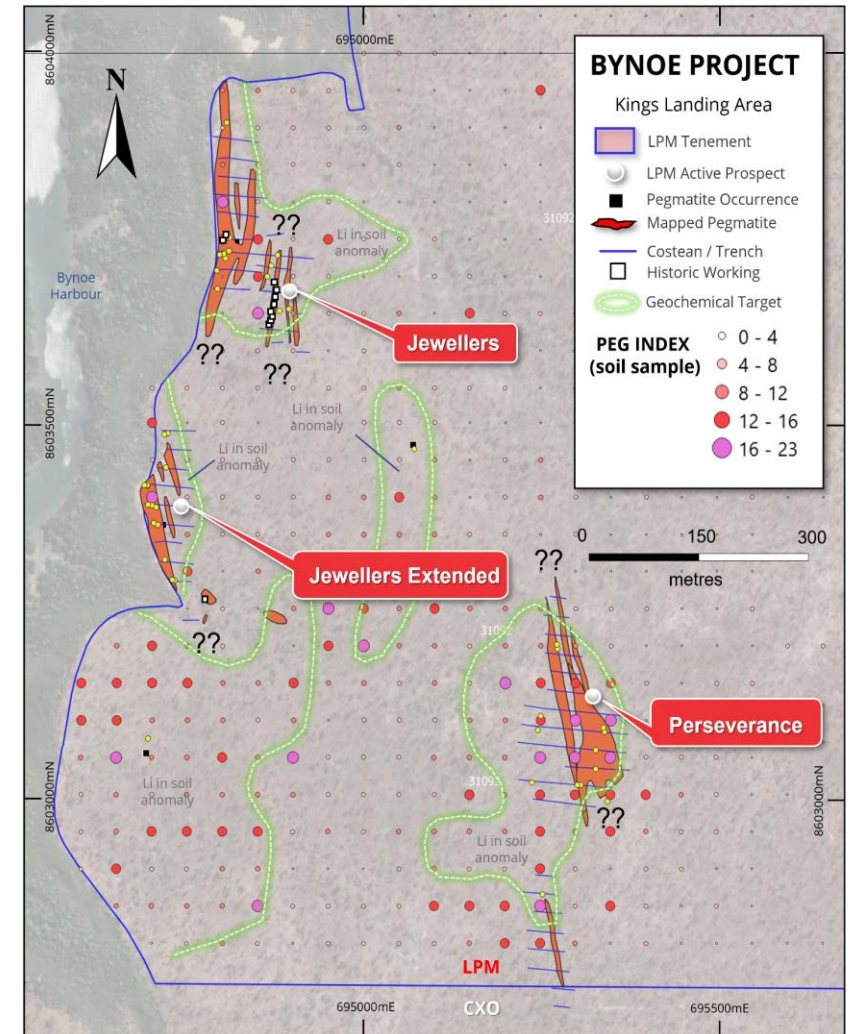




# 2. Outstanding GEOLOGICAL PROSPECTIVITY

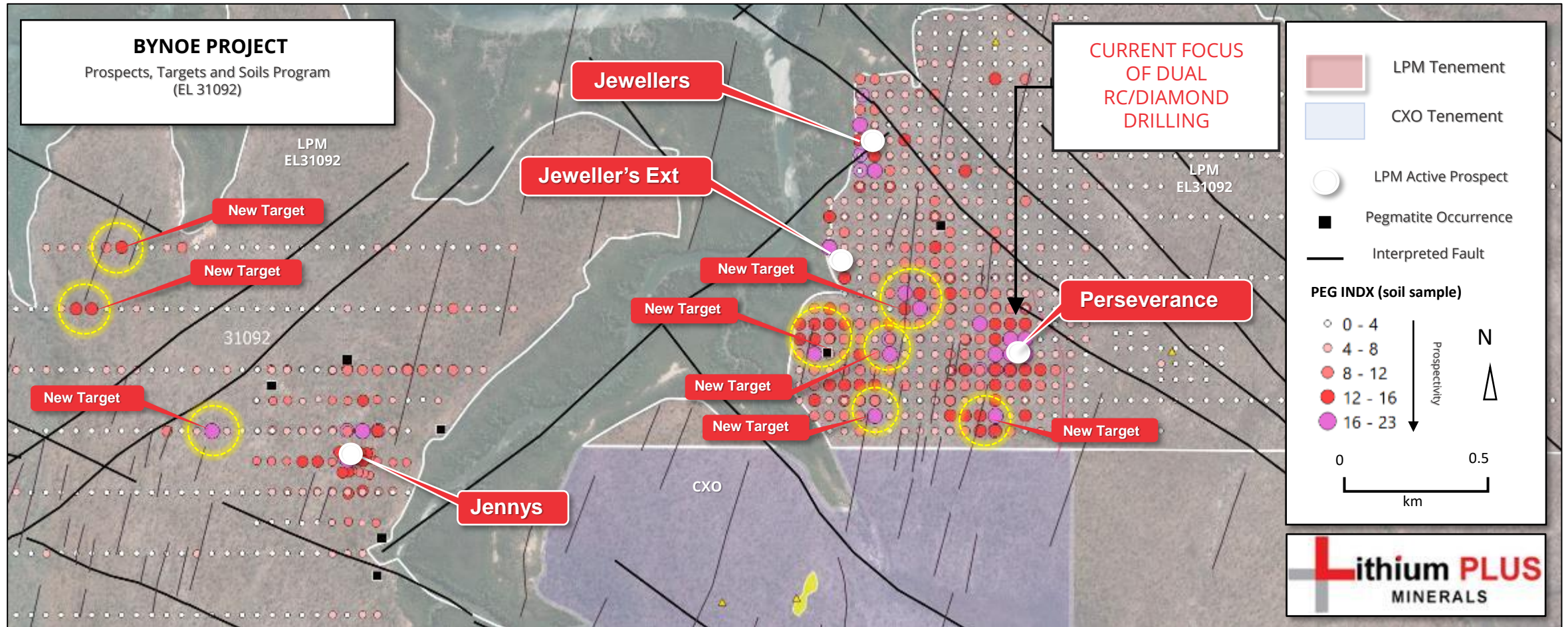
## BYNOE PROJECT | KINGS LANDING AREA DEFINED

- Surface mapping has identified **several large weathered pegmatites (exposed in historic costeaning)**:
  - 500m long at **Jewellers**
  - >100m long at **Perseverance**
  - 250m long at **Jennys**
- Four large, high-priority pegmatite systems to be targeted in next phase exploration; **Perseverance, Jewellers, Jewellers Extended and Jennys**
- Phase 2 drilling in Q4 2022 included **eight preliminary holes** at Perseverance
- Results confirmed **spodumene-bearing and lithium grades above 0.5%  $\text{Li}_2\text{O}$  in fresh pegmatite**



# 2. Outstanding GEOLOGICAL PROSPECTIVITY

BYNOE PROJECT | NUMEROUS NEW TARGETS TO BE RAB DRILLED 2023

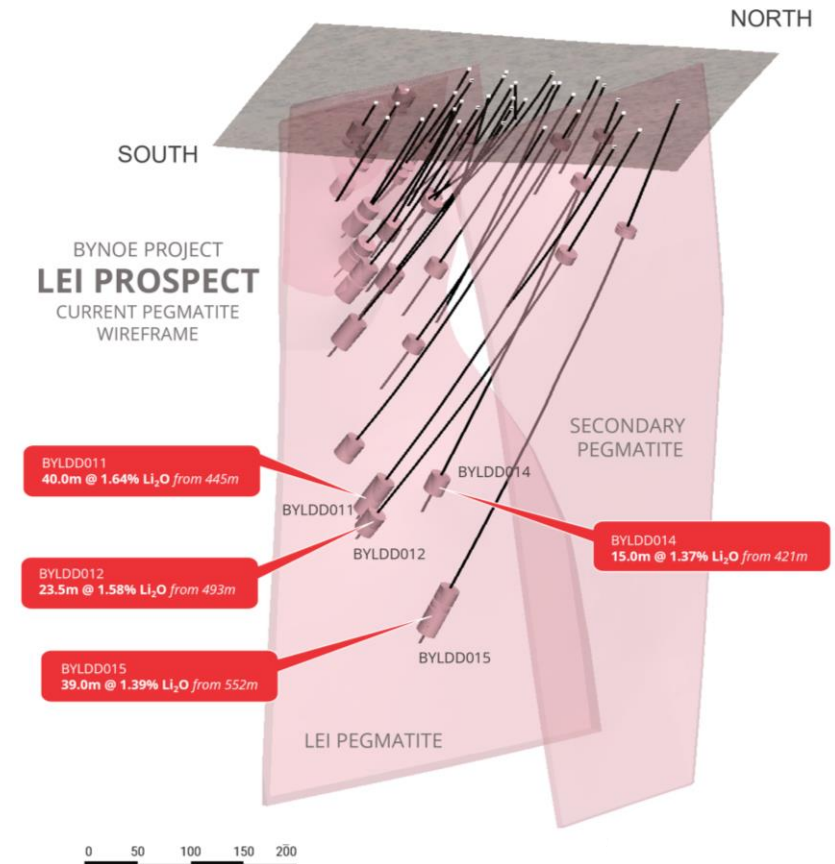




# 3. Aggressive EXPLORATION PROGRAM

## SUCCESSFUL DRILLING AT LEI DUAL PEGMATITE SYSTEM

- Results from **Phase 1 drilling**<sup>1</sup> returned significant extensional intersections of high-grade spodumene mineralisation including:
  - 28.7m @ 1.43% Li<sub>2</sub>O** from 196m (two main intervals over 38.5m) (BYLDD001)
  - 24.0m @ 1.18% Li<sub>2</sub>O** from 173m (two main intervals over 32.0m) (BYLRC023)
- Results from **Phase 2 drilling**<sup>2</sup> confirmed Primary Lei pegmatite mineralisation extension at depth:
  - 28.3m @ 1.60% Li<sub>2</sub>O** from 264.7m (BYLDD003)
  - 22.3m @ 1.60% Li<sub>2</sub>O** from 398.8m (BYLDD004)
- Phase 3 drilling**<sup>3</sup> further extended the Primary Lei Pegmatite at depth, with key results that included:
  - 40.0m @ 1.64% Li<sub>2</sub>O** from 445.0m (BYLDD011)
  - 23.5m @ 1.58% Li<sub>2</sub>O** from 493.0m (BYLDD0012)
  - 39.0m @ 1.39% Li<sub>2</sub>O** from 552.0m (BYLDD015)



1. Refer 24 November 2022 ASX Announcement "Further high-grade lithium intercept returned at Lei Prospect"

2. Refer 1 February 2023 ASX Announcement "Second shallow pegmatite discovered at Lei - Major pegmatite continues at depth"

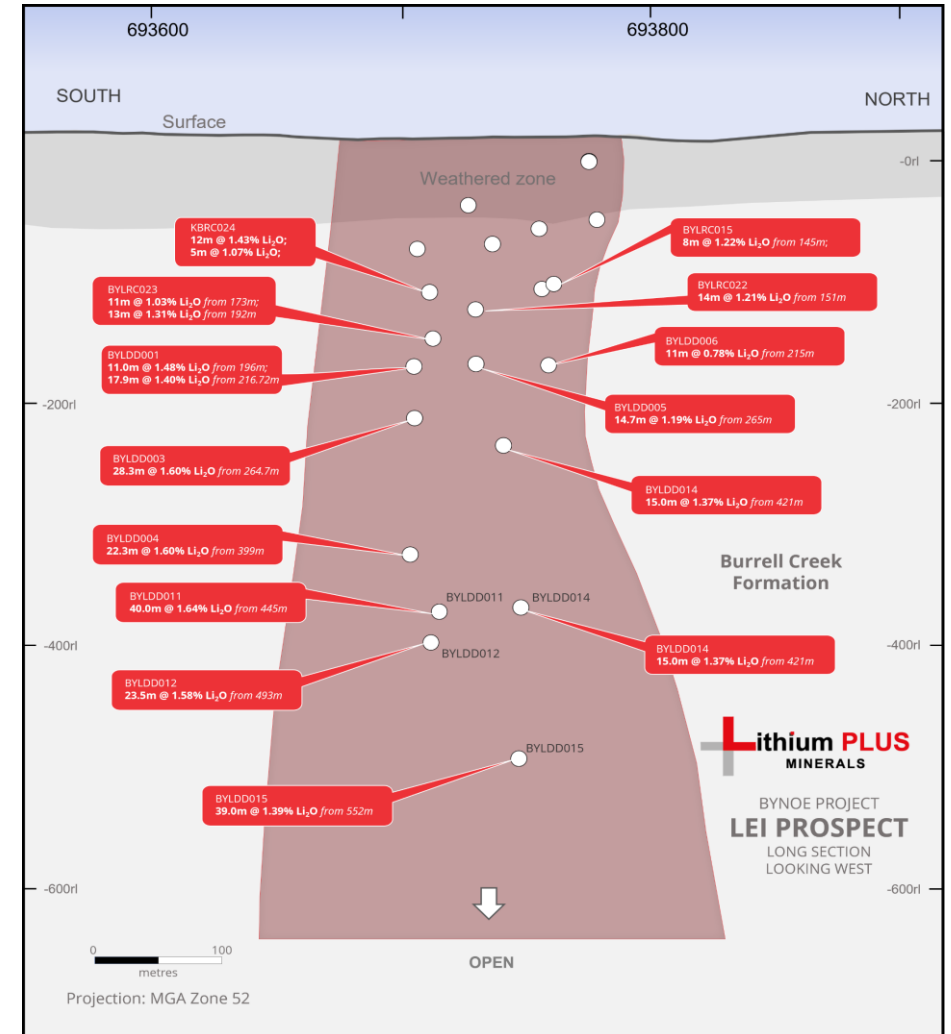
3. Refer 20 July 2023 ASX Announcement "Thick high-grade mineralised intersections extend Primary Lei pegmatite"

# 3. Aggressive EXPLORATION PROGRAM

MAIDEN MINERAL RESOURCE OPPORTUNITY

- Phase 3 drilling at Lei now complete with **both Lei mineralised pegmatites remaining open at depth**
- Planned Lei infill drilling for up to 7 RC holes **to begin in the coming weeks**
- Concurrent, fully funded, diamond drilling program** to test the extent of both Lei pegmatites
- Remain on track for declaration of a **maiden high-grade lithium resource by Q4 2023<sup>1</sup>**

1. Target timeframes are subject to change and may be impacted by wet season or other unforeseen circumstances





# 3. Aggressive EXPLORATION PROGRAM

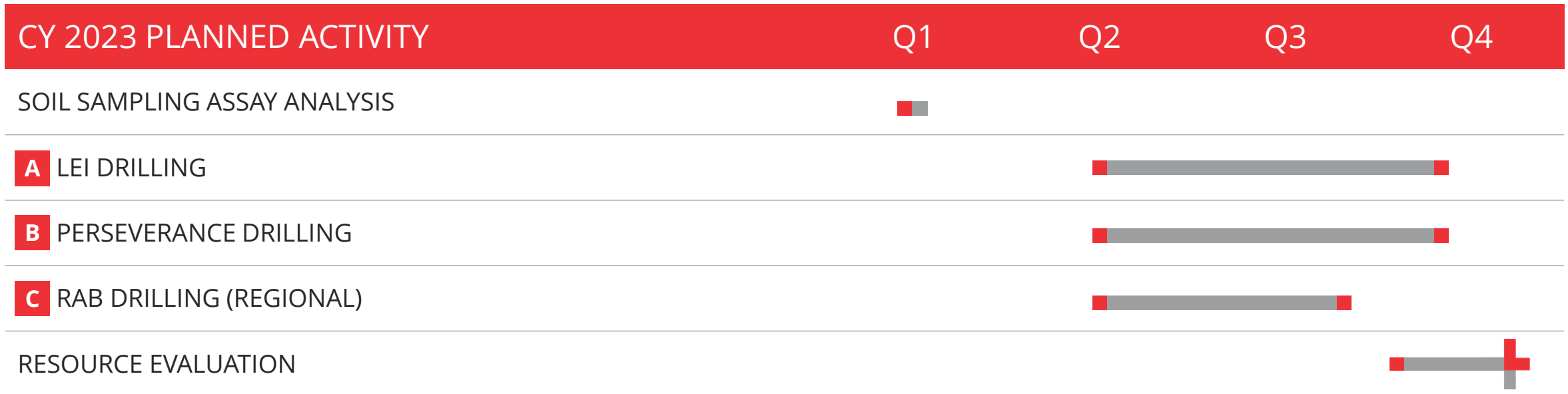
## ENLARGED 2023 PHASE 3 DRILLING PROGRAM

- **Phase 3 drilling program** continues outside of the Lei Prospect area, with dual RC/diamond drilling underway at Perseverance
- Total Phase 3 drilling planned to consist of:
  - 10,000 metres of reverse circulation drilling;
  - 3,000 metres of diamond drilling; and
  - 5,000 metres rotary air blast (**RAB**) drilling
- Program scheduled to include:
  - A** Lei Prospect infill and extensional drilling
  - B** Perseverance Prospect high-priority drilling
  - C** Kings Landing new target exploratory drilling

PROSPECT	Outcrop	Soils	DGPR	Mag	Planned drilling
Lei		✓	✓	✓	Diamond and RC
Perseverance	✓	✓	✓	✓	Diamond and RC
Jewellers	✓	✓		✓	Diamond and RC
Jewellers Extended	✓	✓		✓	RAB
Jennys	✓	✓		✓	Diamond and RC
Cai	✓	✓	✓	✓	RAB
SW Cai		✓	✓	✓	RAB
Lianna		✓		✓	RAB

# 3. Aggressive EXPLORATION PROGRAM

FULL SEASON OF SUBSTANTIAL EXPLORATION PLANNED



## Targeting | DEFINITION OF A MINERAL RESOURCE ESTIMATE BY Q4 23<sup>1</sup>

1. Target timeframes are subject to change and may be impacted by wet season or other unforeseen circumstances

# 4. Strategic CORNERSTONE INVESTMENT

## FROM LEADING BATTERY DEVELOPER AND MANUFACTURER

- Suzhou CATH Energy Technologies (**CATH**) invested at IPO with a **9% equity interest**
- CATH is jointly owned by **Contemporary Amperex Technology Co. Ltd (CATL)** and **Mr Pei Zhenhua**
- CATL is the **world's largest electric vehicle (EV) battery manufacturer**
- Mr Pei is a significant investor in Yibin Tianyi Lithium Industry – **one of China's largest lithium converters**

# CATL

A global leader of new energy innovative technologies, committed to providing premier solutions and services for new energy applications worldwide

TOP  
**EV BATTERY  
MANUFACTURER**  
GLOBALLY<sup>1</sup>

HOLDS 32.5% OF A  
**US\$27 BILLION**  
BATTERY MARKET<sup>1</sup>

GLOBALLY  
**2.35 MILLION**  
EVs IN OPERATION  
WITH CATL BATTERIES

**LITHIUM ION  
BATTERY  
SPECIALISTS**

1. By consumption volume. Adapted from data from SNE Research

# 5. Proven board and **MANAGEMENT**

WITH A STRONG FOCUS ON EXPLORATION AND RESOURCE DEFINITION



**Dr Bin Guo**

EXECUTIVE CHAIRMAN

- Founder and Executive Chairman of Lithium Plus
- PhD in Geophysics with more than 20 years experience in mining and finance
- Wide range of technical and commercial knowledge gained at SRK Consulting, CITIC Securities and Mining One Consultants
- Previously Non-Executive Director of North American Lithium and member of AusIMM, AIG and ASEG



**Mr Simon Kidston**

NON EXECUTIVE DIRECTOR

- Finance professional with more than 25 years' global experience with Macquarie Bank, HSBC and Helmsec Global Capital Limited
- Founding Director of renewable energy company Genex Power
- Previously involved in the establishment of ASX listed mining companies, Endocoal Ltd, Carabella Resources Ltd and Estrella Resources Ltd
- Current Non-Executive Director of Genex Power Ltd and QC Copper and Gold



**Dr Jason Berton**

NON EXECUTIVE DIRECTOR

- Structural geologist with over 20 years mining and exploration experience at Homestake, Barrick, BHP and SRK Consulting
- Current Managing Director of PolarX Limited, and former Managing Director of ASX-listed Estrella Resources
- PhD in Geology and member of AusIMM



**Mr George Su**

NON-EXECUTIVE DIRECTOR

- Over 35 years' business experience in the Asia-Pacific region
- Current CEO and Managing Director of Richlink Australia
- Former country head of Australian operations at CITIC Securities and independent director of Macquarie Bank's China property fund
- Current Independent Director of YPB Group Ltd, an ASX listed technology company



**Dr Bryce Healy**

EXPLORATION MANAGER

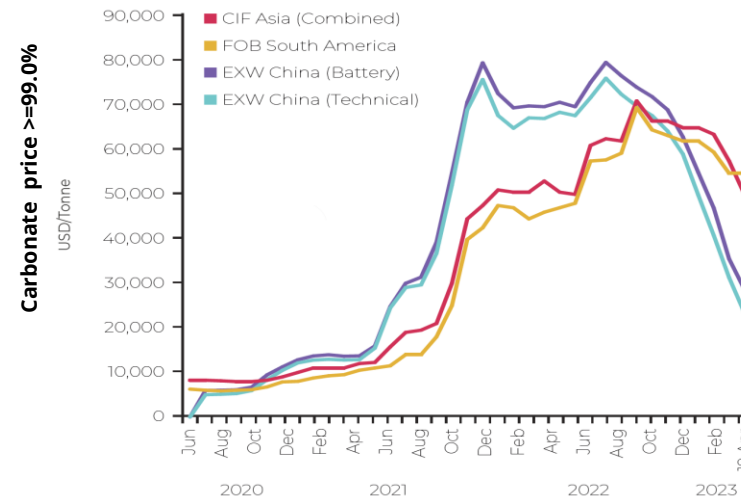
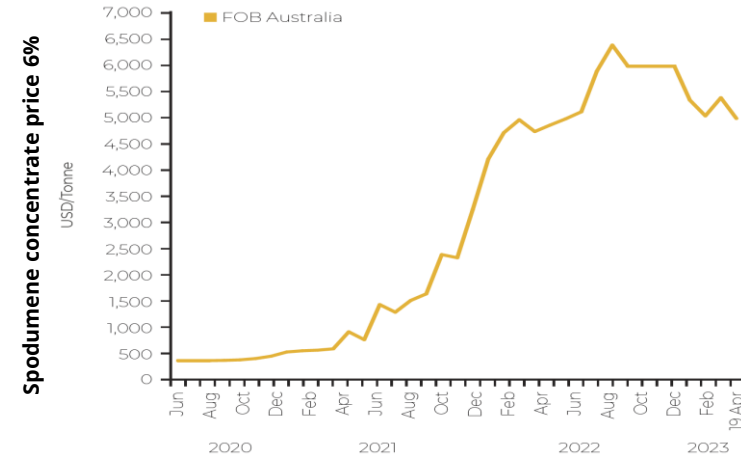
- Experienced Exploration Geologist with a PhD in Geology specialising in granite petrology
- A member of the AIG with over 20 years industry experience in Exploration Management and Technical Director roles, including 13 years of consulting experience with SRK Consulting.
- Currently a director of exploration consultancy Noventum Group and COO of Revolver Resources Ltd



# 6. Direct leverage to **BATTERY TRANSITION**

## SET TO CAPITALISE ON A STRUCTURAL LITHIUM SUPPLY SHORTAGE

- Lithium is an **essential battery cathode material**
- **Lithium-rich spodumene concentrate** is a feedstock material used in the production of lithium chemicals that go into **batteries for Electric Vehicles (EVs)**
- **Supply** of spodumene concentrate remains **structurally constrained** – meaningful lithium supply response dependant on uptake of low grade, CO<sub>2</sub> intensive Chinese lepidolite production
- Lithium Plus is ideally placed to take advantage of **strong long term market fundamentals for spodumene concentrate**



Source: 'Battery Metals Watch: The end of the beginning (2022)' – Goldman Sachs

Source: Benchmark Mineral Intelligence

# Investment HIGHLIGHTS

- 1+ Premier project location
- 2+ Outstanding geological prospectivity
- 3+ Aggressive drilling program
- 4+ Strategic cornerstone investment
- 5+ Proven board and management
- 6+ Direct leverage to the battery transition





# Contact DETAILS

## Registered Address

Level 6, 22 Pitt Street  
Sydney NSW 2000

## Simon Kidston

0414 785 009  
skidston@lithiumplus.com.au

## Share registry

Automic Pty Ltd  
Level 2, 267 St Georges Terrace  
Perth WA 6000

1300 288 664 (within Australia)  
+61 2 9698 5414 (international)  
hello@automic.com.au

