

GOLDEN MILE RESOURCES LTD

AGM Presentation



Lachlan Reynolds
Managing Director



Melbourne, November 20, 2018

Cautionary Statements & Disclaimer



This presentation has been prepared by Golden Mile Resources Ltd ("G88") (ACN 614 538 402). It should not be considered as an offer or invitation to subscribe for or purchase any securities in G88 or as an inducement to make an offer or invitation with respect to those securities in any jurisdiction.

This presentation contains a general summary information about G88. The information, opinions or conclusions expressed in the course of this presentation should be read in conjunction with G88's other periodic and continuous disclosure announcements lodged with the ASX, which are available on or through the G88 website. No representation or warranty, express or implied, is made in relation to the fairness, accuracy or completeness of the information, opinions and conclusions expressed in this presentation.

This presentation may include forward looking information regarding future events, conditions, circumstances and the future financial performance of G88. Often, but not always, forward looking statements can be identified by the use of forward looking words such as "may", "will", "expect", "intend", "plan", "estimate", "anticipate", "continue" and "guidance", or other similar words and may include statements regarding plans, strategies and objectives of management, anticipated exploration or production commencement dates. Such forecasts, projections and information are not a guarantee of future performance and involve unknown risks and uncertainties, many of which are beyond G88's control, which may cause actual results and developments to differ materially from those expressed or implied. Further details of these risks are set out below. All references to future development and production guidance made in relation to G88 are subject to the completion of all necessary feasibility studies, permit applications and approvals, construction, financing arrangements and access to the necessary infrastructure. Where such a reference is made, it should be read subject to this paragraph and in conjunction with further information about the Mineral Resources and Ore Reserves, as well as any Competent Persons' Statements included in periodic and continuous disclosure announcements lodged with the ASX. Forward looking statements in this presentation only apply at the date of issue. Subject to any continuing obligations under applicable law or any relevant stock exchange listing rules, in providing this information G88 does not undertake any obligation to publicly update or revise any of the forward looking statements or to advise of any change in events, conditions or circumstances on which any such statement is based.

There are a number of risks specific to G88 and of a general nature which may affect the future operating and financial performance of G88 and the value of an investment in G88 including and not limited to economic conditions, stock market fluctuations, commodity demand and price movements, access to infrastructure, timing of environmental approvals, regulatory risks, operational risks, reliance on key personnel, reserve and resource estimations, native title and title risks, foreign currency fluctuations and mining development, construction and commissioning risk.

Any references to G88 Exploration Targets, Exploration Results, Mineral Resource and Ore Reserve should be read in conjunction with G88's other periodic and continuous disclosure announcements lodged with the ASX, which are available on or through the G88 website. Please note the potential quantity and grade of the 'Exploration Target' is conceptual in nature, that there has been insufficient exploration to estimate a Mineral Resource and that it is uncertain if further exploration will result in the estimation of a Mineral Resource. The current drilling density is insufficient to classify the mineralisation as a 'Mineral Resource' under the 2012 JORC guidelines.

The information in this report that relates to Exploration Results is based on information compiled by Mr Lachlan Reynolds who is a Member of the Australasian Institute of Mining and Metallurgy and the Managing Director of Golden Mile Resources Ltd. Mr Reynolds has sufficient experience that is relevant to the styles of mineralisation and type of deposits under consideration, and to the activity being undertaken, to qualify as a Competent Person as defined in the 2012 Edition of the 'Australasian Code for Reporting of Exploration Results, Mineral Resources and Ore Reserves'. Mr Reynolds consents to the inclusion in the report of the matters based on his information in the form and context in which it appears.

The information in this report that relates to Mineral Resources is based on information compiled by Mr Paul Payne who is a Fellow of the Australasian Institute of Mining and Metallurgy and is a full time employee of Payne Geological Services Pty Ltd. Mr Payne has sufficient experience that is relevant to the styles of mineralisation and type of deposits under consideration, and to the activity being undertaken, to qualify as a Competent Person as defined in the 2012 Edition of the 'Australasian Code for Reporting of Exploration Results, Mineral Resources and Ore Reserves'. Mr Payne consents to the inclusion in the report of the matters based on his information in the form and context in which it appears.

Golden Mile Resources – G88

Investment highlights

Newly discovered and delineated laterite nickel-cobalt deposit

- Previously untapped mineral potential in the South West Mineral Field, WA
- ~14,000 metres of drilling completed
- Maiden resource just announced: **26.3 Mt @ 0.64% Nickel & 0.04% Cobalt***
- Technical studies underway to support development strategy

Nickel sulphide exploration targets

- Massive sulphides discovered near-surface using ground geophysical methods

Highly prospective gold exploration targets in NE Goldfields Terrane, Yilgarn

- Leonora, Gidgee and Darlot Goldfields
- Extensive strike length of gold mineralised structures
- Active exploration program

Experienced team with track record of exploration, development and production

Regular news flow since listing on the ASX in June 2017

** Refer to ASX announcement dated 19th November, 2018*



Corporate Overview

ASX Symbol	G88
Shares on Issue	41,424,977 16,475,000 (Escrowed to June 2019)
Share Price	\$0.15 (at 16 November 2018)
Market Cap	\$8.7 million
Cash (date)	\$2.2 million (at 30 September 2018)
Options	7,925,000 (\$0.30, expiry dates 2020-21, most escrowed)

Major Shareholders	%
Choo Koon Lip	12.9
International Energy Equity Ltd	10.4
BNP Paribas Nominees Pty Ltd	3.7
LTL Capital Pty Ltd	3.7
Top 20 Shareholders	56.6

Experienced Board and Management

Rhod Grivas	Non-Executive Chairman <i>Technical and management background</i>
Lachlan Reynolds	Managing Director <i>Technical and management background</i>
Phil Grundy	Non-Executive <i>Corporate legal background</i>



Discovery & Development Focus

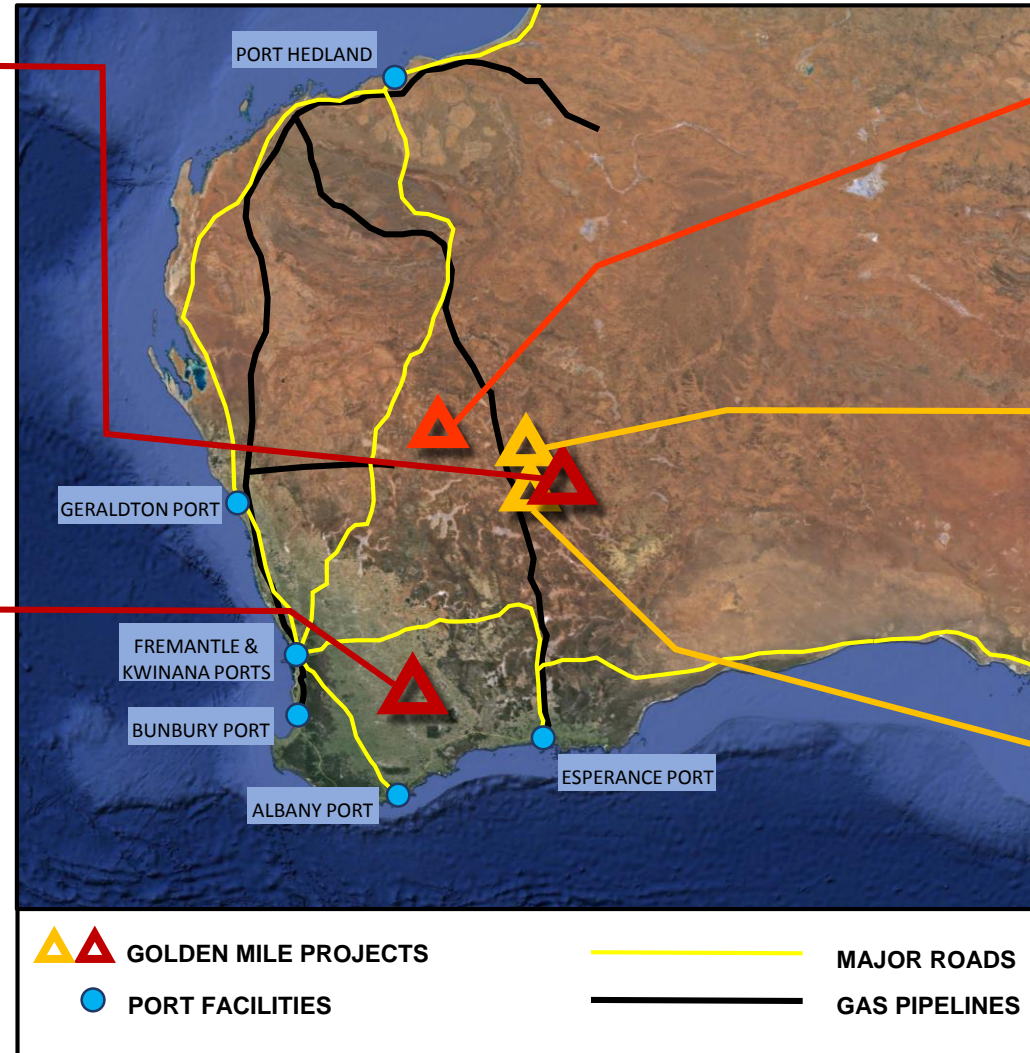
Building a Pipeline of Projects

MINARA NICKEL PROJECT

- >10 km of strike (60 km²)
- Wide intercepts of nickel & cobalt
- Historical resource estimate
- AC/RC drilling confined to areas of outcrop – significant upside
- Adjacent to Glencore's Murrin Murrin operation

QUICKSILVER NICKEL-COBALT PROJECT

- >15 km of strike (51 km²)
- G88 drilling has delineated an extensive zone of lateritic nickel-cobalt mineralisation
- Ground EM anomalies indicate potential for primary nickel-sulphide mineralisation



GIDGEE GOLD & BASE METAL PROJECT

- >10 km of strike (400 km²)
- Adjacent to Gidgee Gold Mine
- Potential for gold, nickel-cobalt and base metals

DARLOT GOLD PROJECT

- 15 km of strike (48 km²)
- Adjacent to Red 5 Darlot Gold Mine
- Lode & Shear Hosted Gold Potential

LEONORA GOLD PROJECT

- >45 km of strike (>100 km²)
- Adjacent to KIN Mining's evolving Mertondale gold mining operation
- Lode & Shear Zone Hosted Gold

Quicksilver Nickel-Cobalt Project

Discovery – Evaluation – Development

Laterite nickel-cobalt mineralisation

- Sub-horizontal, tabular blanket of mineralisation developed in the lateritic weathering profile
- Extensively drilled over 3 km x 1 km area

Exploration for nickel sulphides

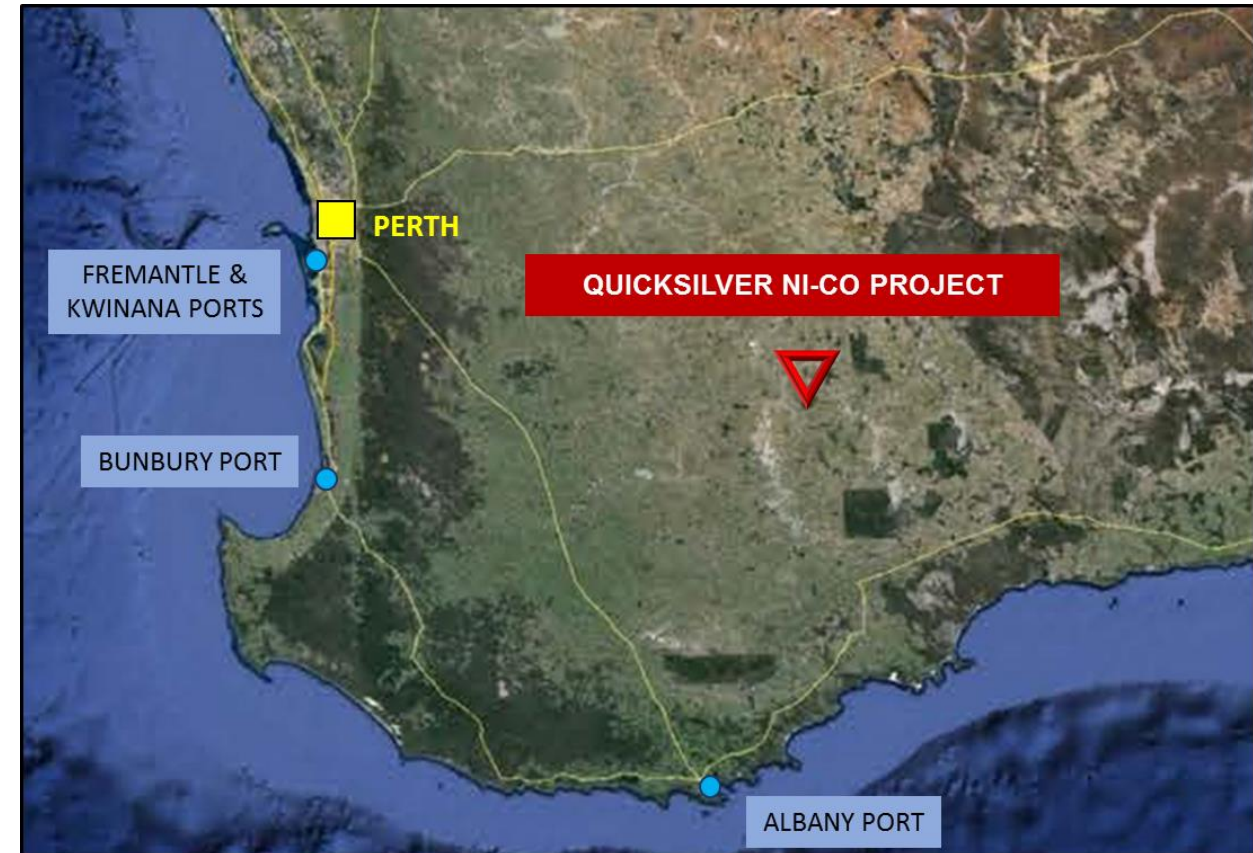
- Drilling of first 'Category 1' EM target discovered sulphide mineralisation
- 3 additional targets to test, all considered highly prospective

Located in South West Mineral Field

- Golden Mile is a first mover in underexplored district

Excellent access and infrastructure

- Crop farming country, dominantly privately landowners
- Good roads, grid power, railhead only 5 km away
- Services, supplies and experienced labour readily available



Quicksilver Nickel-Cobalt Project

Listing to Discovery in Less Than 6 Months

Quicksilver has a sporadic exploration history back to the 1980's

- Explored as a gold and iron ore project, then nickel-cobalt
- Extensive nickel-cobalt surface anomaly, over more than 1,500 m of strike
- Disparate RAB & RC percussion drilling demonstrates Ni-Co mineralisation in the near surface environment

Golden Mile exploration initially focused on laterite targets

- Extended known mineralisation to over 3,000m of strike
- Systematic aircore drilling over Garard's Prospect at 400 x 100 m spacing – holes to refusal in 'silicified saprock' at ~30 m depth
- Infill & extensional RC percussion drilling at Garard's Prospect to 200 x 100 m spacing shows **thick intercepts (>50 m) of Ni-Co mineralisation** in laterite profile over weathered ultramafic rock
- Targeted diamond drilling for detailed geology and density information
- Resource estimate completed

Exploration program for nickel sulphide targets in fresh rock

- Ground EM (Moving Loop) survey **over 15 km of strike**
- Four **Category 1 Anomalies** have a massive sulphide signature
- Massive sulphides intersected in drilling at Wyatt's Prospect
- RC percussion drilling planned for additional sulphide targets



Quicksilver Nickel-Cobalt Project

Aircore, RC Percussion and Diamond Drilling over 3 km Strike

G88 has undertaken a comprehensive drilling program across the Garard's prospect in the southern Quicksilver tenement area

- Initial aircore drilling to test surface anomalies and known nickel-cobalt mineralisation in shallow historical drill holes
- 400 x 100 metre spacing along more than 1,500 m of strike – outstanding results in near surface weathering profile over ultramafic rocks

Follow up RC percussion drilling intercepted wide zones of nickel mineralisation

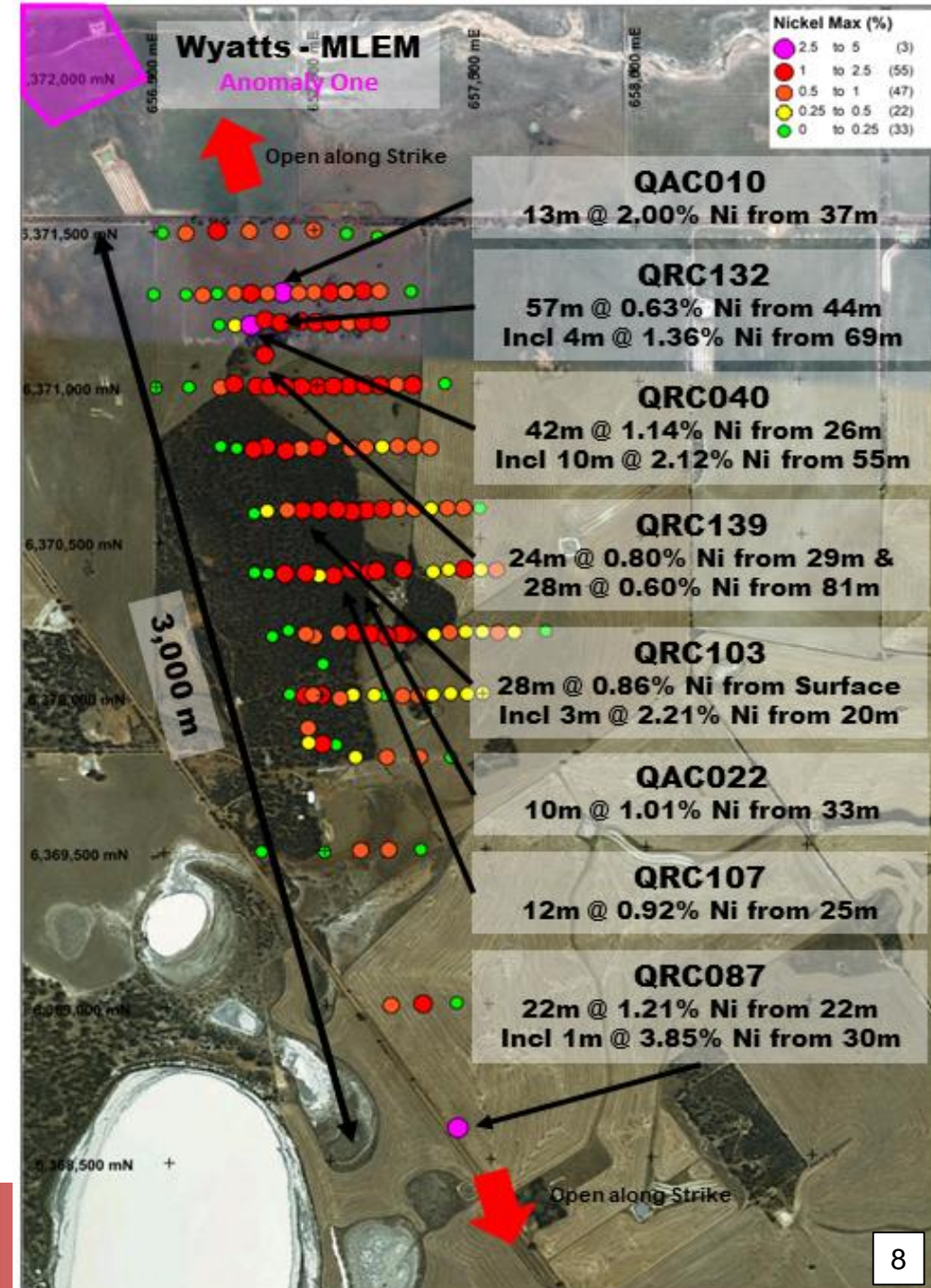
- Systematic RC percussion drilling on 200 x 50 m spacing over 3,000 m of strike – target extended by drilling
- Mineralisation in 2 main zones – saprolite (upper/lower) and saprock
- Saprock zones have low iron, high levels of silica (>40%) with nickel mineralisation and anomalous cobalt (over 1,000 ppm) and Copper (up to 1,400 ppm)

Extensional RC

- Recent extensional RC percussion drilling continues to define the mineralised envelope
- Total of ~14,000 m of drilling completed, with mineralisation open along strike

Diamond drilling

- 3 diamond drill holes recently completed for geological information and density data



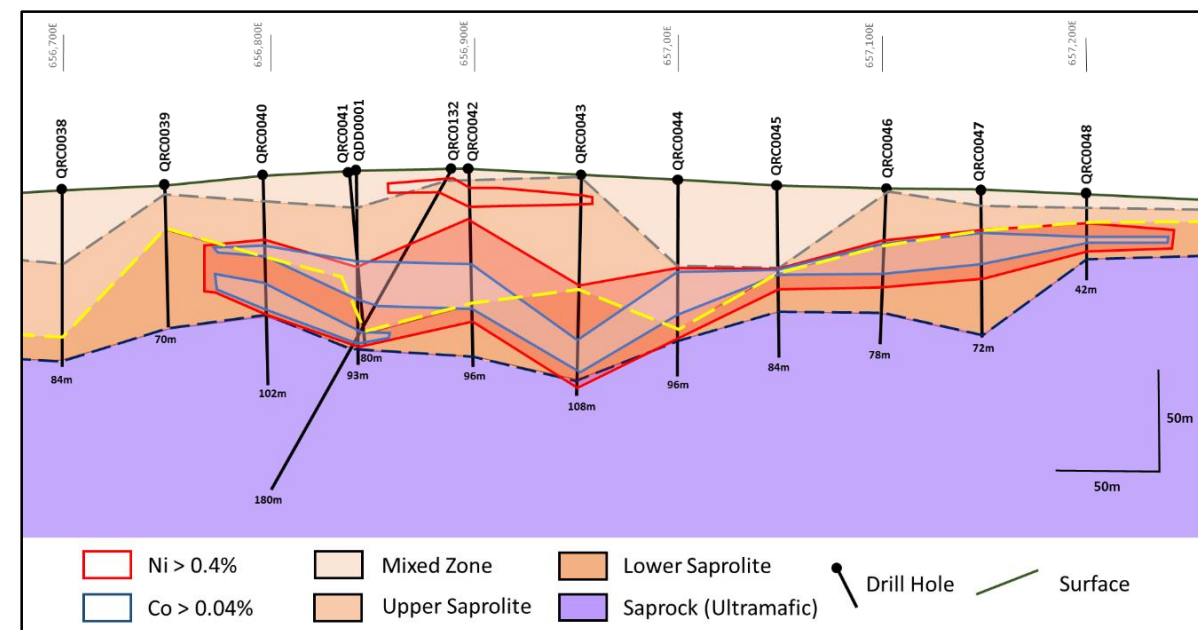
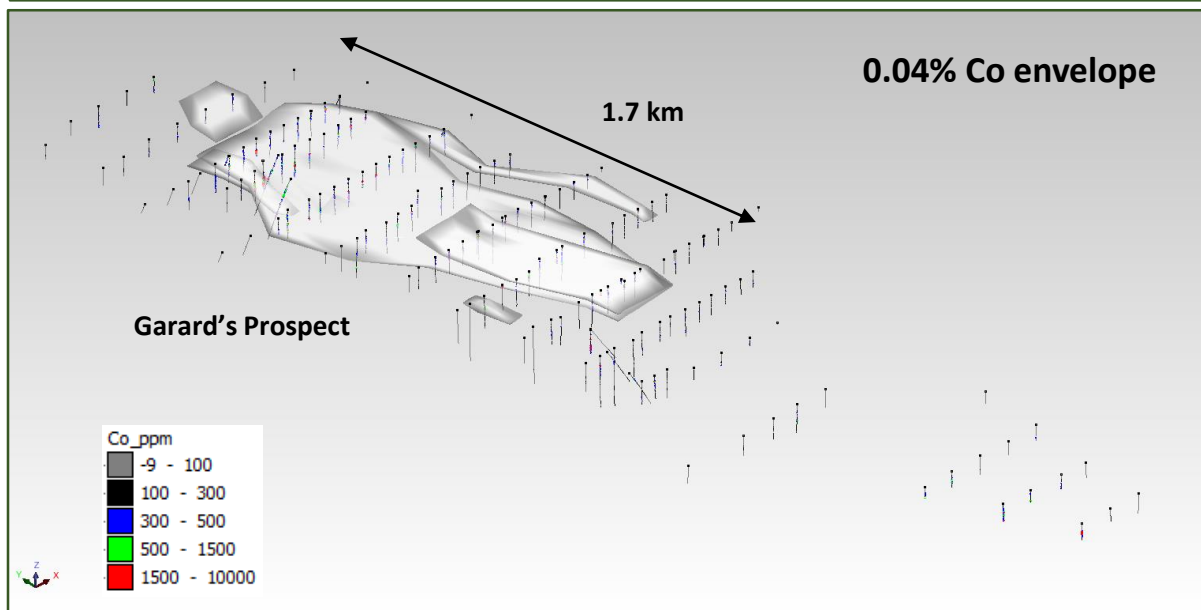
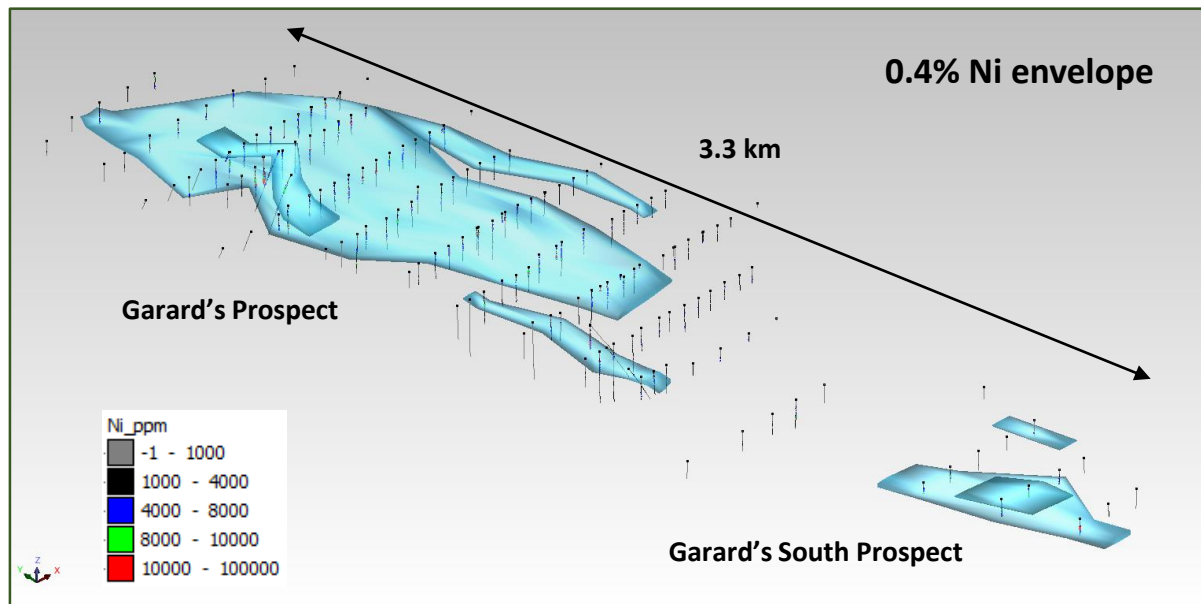
Quicksilver Nickel-Cobalt Project

Maiden Resource Estimate

26.3 Mt @ 0.64% Nickel & 0.04% Cobalt (cut-off grade >0.5% Ni or >0.05% Co)

Ni Domain	Class	Tonnes Mt	Ni %	Co %	Ni Metal Tonnes	Co Metal Tonnes
High Ni >0.5% Ni	Indicated	4.1	0.75	0.047	30,600	1,900
	Inferred	19.0	0.67	0.037	126,800	7,000
	Sub Total	23.1	0.68	0.039	157,300	9,000
Low Ni, High Co <0.5% Ni, >0.05% Co	Indicated	0.3	0.42	0.077	1,300	200
	Inferred	2.8	0.35	0.075	10,000	2,100
	Sub Total	3.1	0.35	0.076	11,100	2,400
Total >0.5% Ni or >0.05% Co	Indicated	4.4	0.72	0.049	31,900	2,100
	Inferred	21.9	0.63	0.042	136,600	9,100
	Total	26.3	0.64	0.043	168,500	11,300

(Rounding discrepancies may occur in summary tables)



Schematic cross section 6,371,200N

Quicksilver Nickel-Cobalt Project

Technical Studies to Support Project Development

Metallurgical Testwork

- Key to unlocking value of the laterite mineralisation
- Selection of representative samples underway for preliminary testwork

Lithogeochemistry

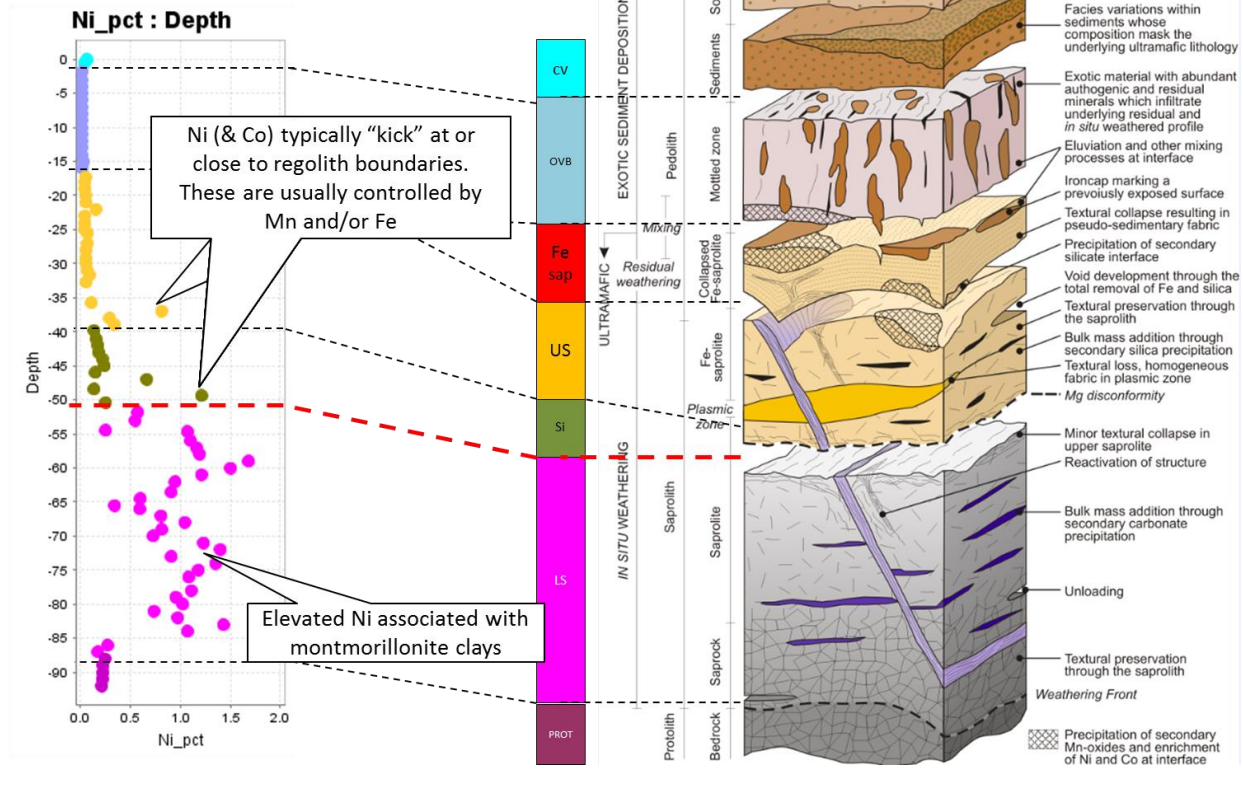
- 3D mapping of rock types
- Important weathering and alteration trends
- Critical domains for resource estimation
- Company has an excellent modern assay database

Mineralogy

- Critical control on the distribution and eventual recovery of metals
- Can be determined using SWIR mineral analysers

➤ Generate 'Geo-Met Model' of the Deposit

Regolith Profile Ni



Technical Evaluation
of Laterite Discovery

Mining and
Processing Review

Infill and Extensional
Drilling/Resource Update

Scoping Study

Quicksilver Exploration

Sulphide Mineralisation – Multiple EM Targets over 15 km Strike

G88 engaged Newexco to drive the nickel sulphide exploration program

- Newexco are nickel sulphide exploration specialists, having played a key role in numerous nickel discoveries in WA including the Nova discovery on the Fraser Range
- Newexco have now supervised Moving Loop Electromagnetic ('MLEM') surveys over the entire Quicksilver project, generating four CATEGORY ONE anomalies:

➤ Anomaly 1 (Wyatt's Prospect)

- 500 m long and only 100 m below surface
- Strong response – 5,600 Siemens
- Semi-massive to massive sulphides intersected in drilling
- Anomalous copper but low nickel grade
- Mafic host rock

➤ Anomaly 5

- Over 400 m long and projects to near surface
- Strong response – 4,900 Siemens

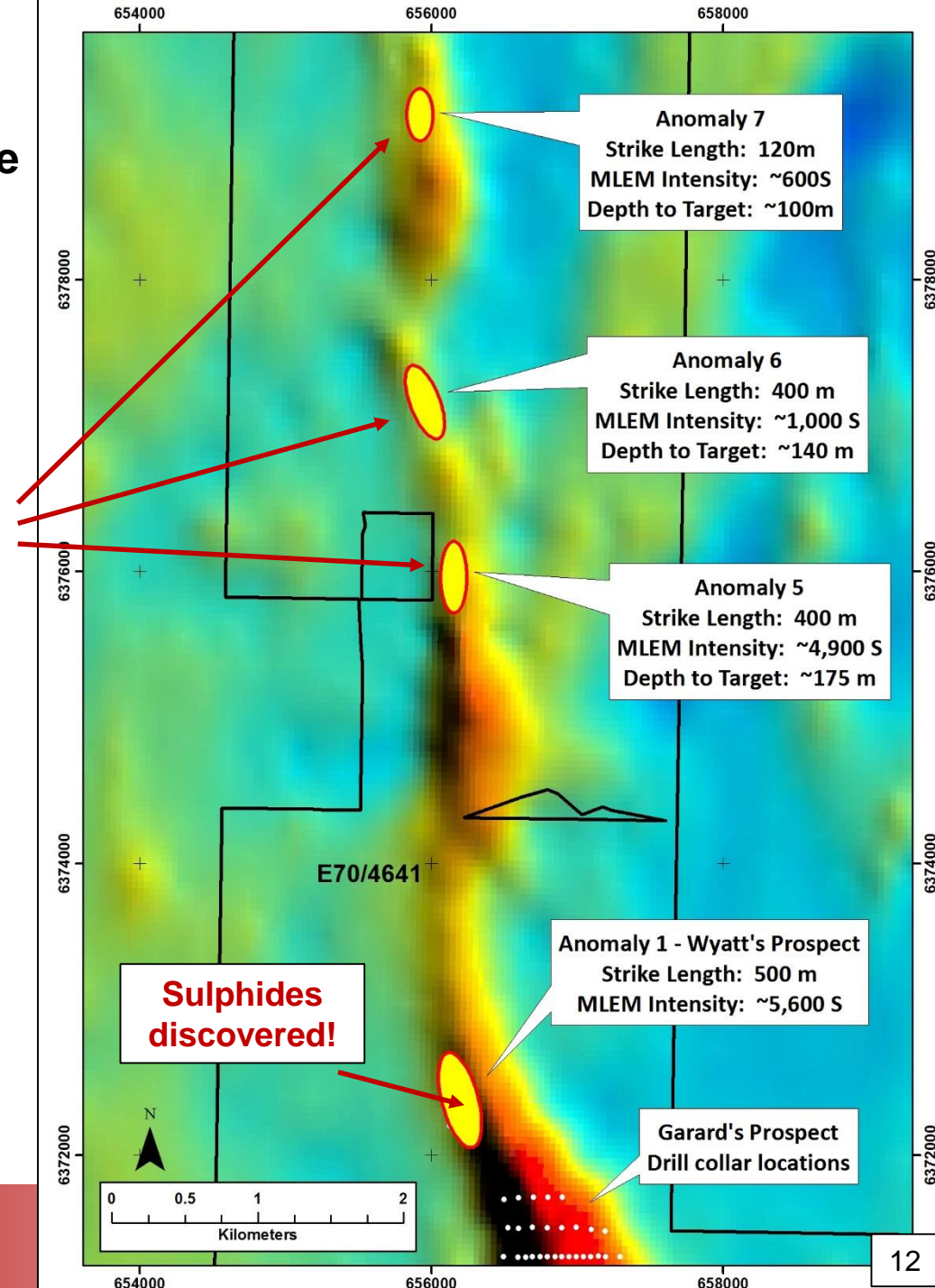
➤ Anomaly 6

- 400 m long with 1,000 Siemens response
- Associated with ultramafic target

➤ Anomaly 7

- 120 m long, close to surface

**Require drill testing:
Shallow RC
percussion program
due to commence in
Dec 2018**

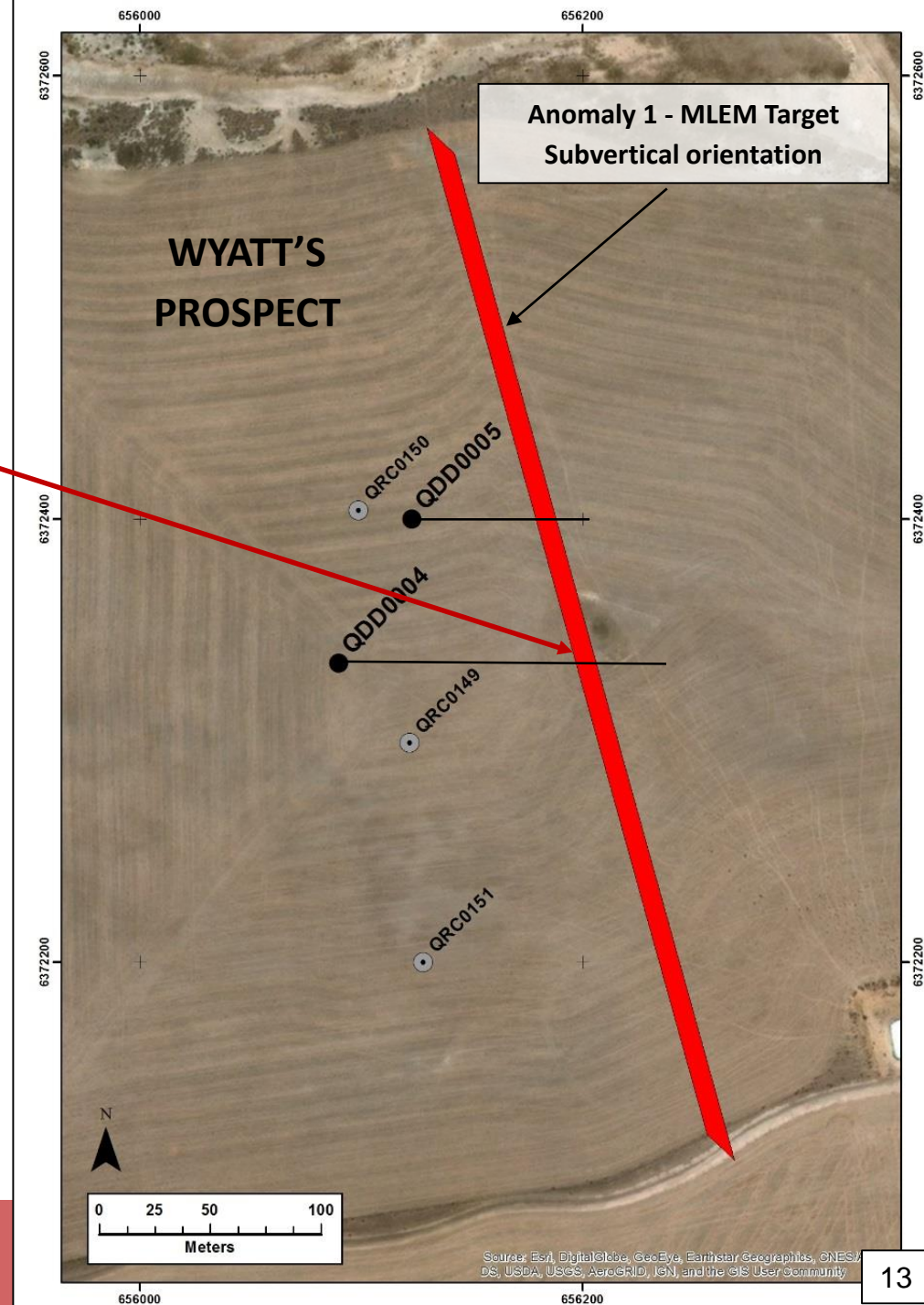


Sulphide Mineralisation

First Test of Prospective Geophysical Target



Semi-massive
sulphide,
QDD0004,
214m downhole



NE Goldfields Projects

Lode and Shear Zone Hosted Gold – Multiple Prospective Areas

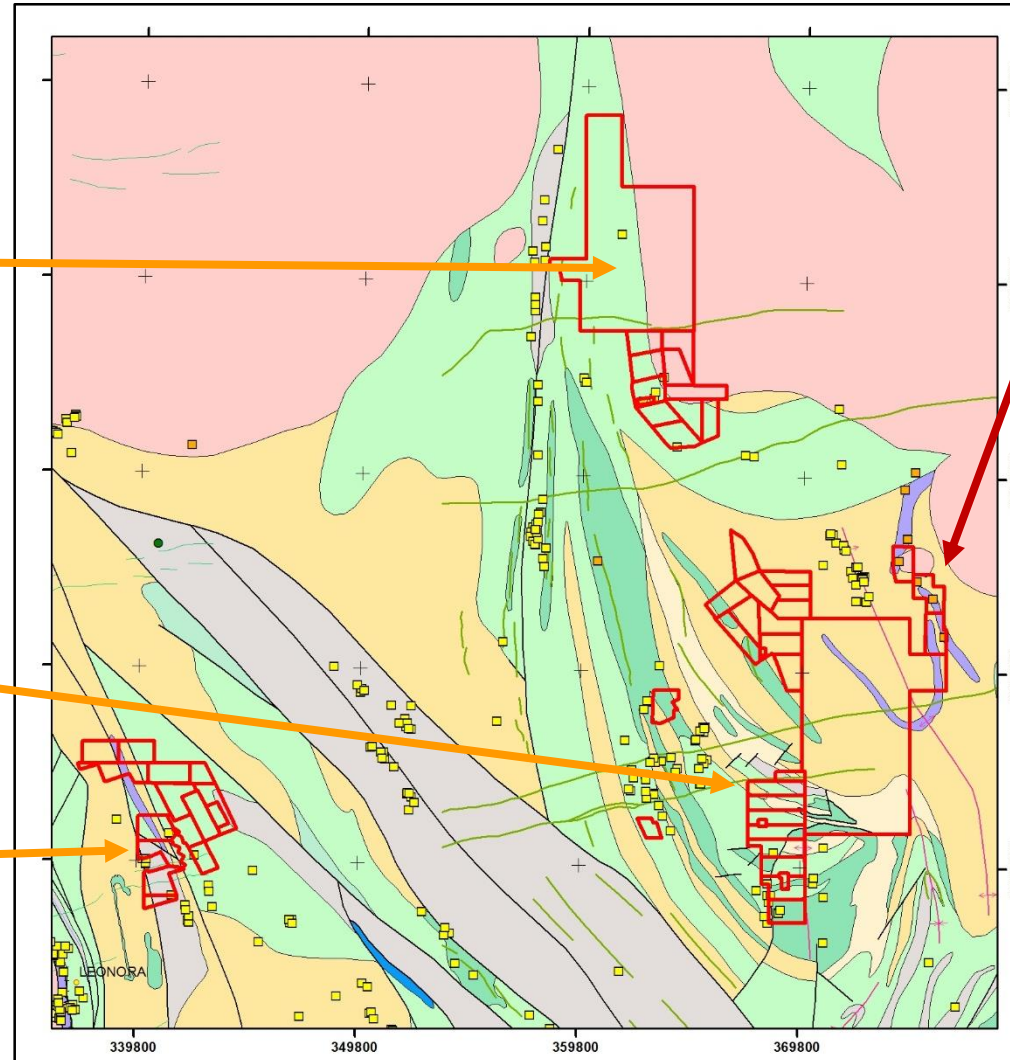
LEONORA GOLD PROJECT

Leonora East

- Monarch Gold Trend
- Untested N trending structural contact and alteration zone(s)
- 15 km of prospective strike
- Numerous gold occurrences and historical workings
- Auger drilling program proposed
- Benalla Gold Trend
- Known gold working, drilling and geochemical anomalies
- Opportunity for drill testing of known targets

Ironstone Well

- Underexplored historical district
- Known high grade gold occurrences
- Follow-up previous G88 work



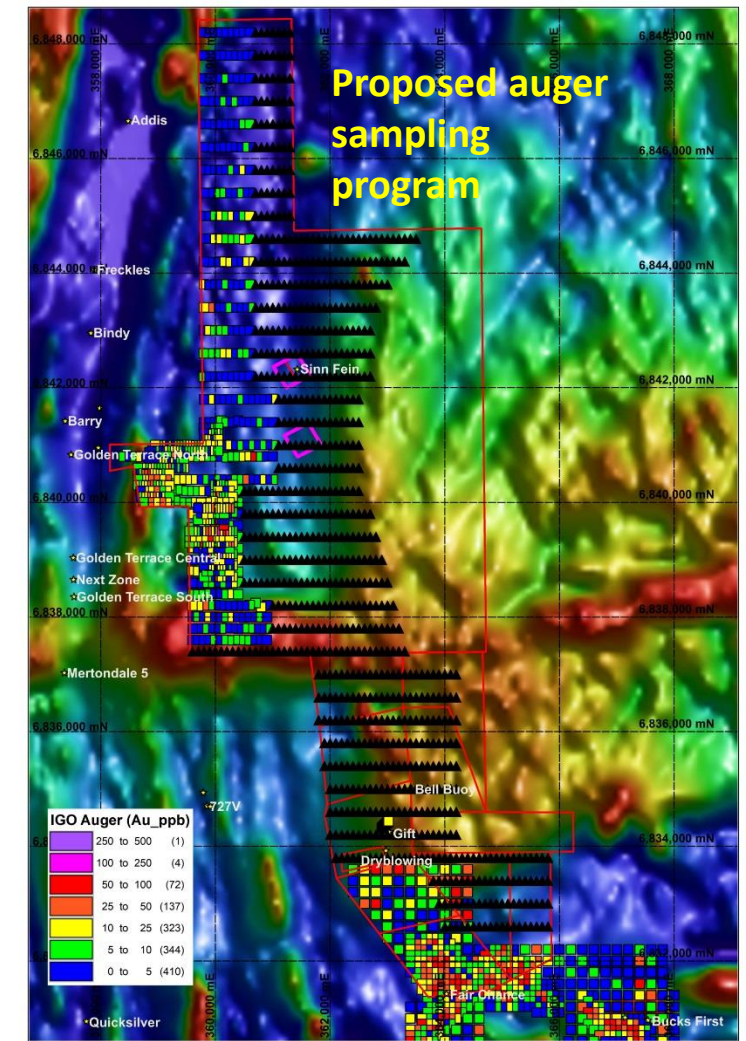
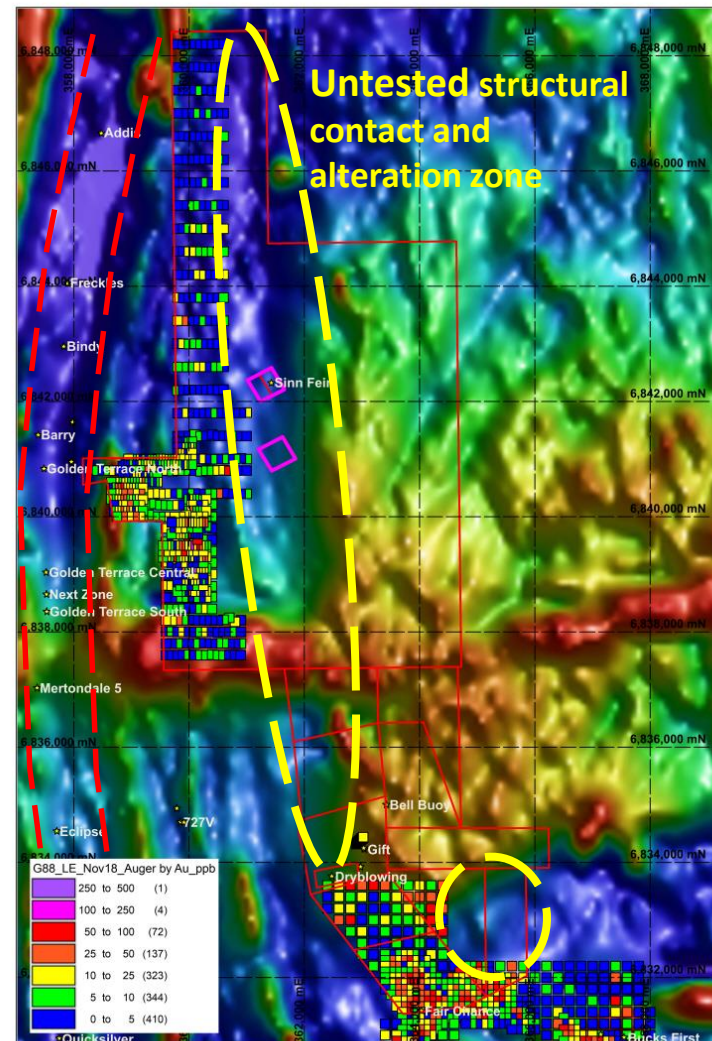
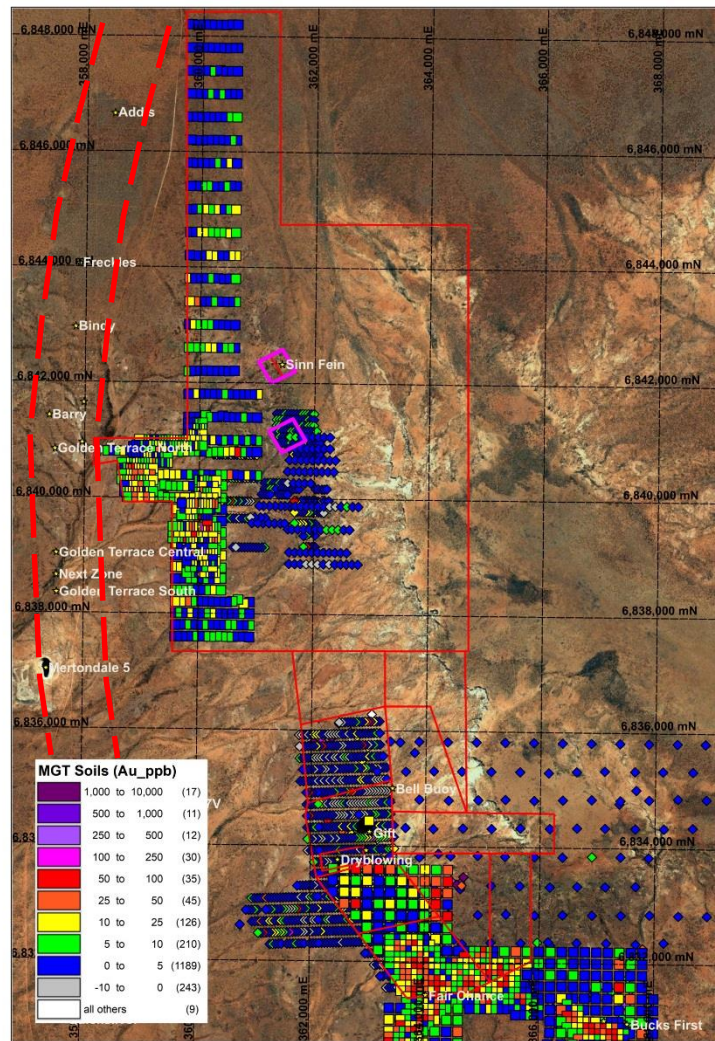
MINARA NICKEL-COBALT PROJECT

Waite Kauri Trend

- Ni-Co lateritic mineralisation associated with ultramafic units
- >10 km of strike (60 km²)
- Wide intercepts of nickel & cobalt
- Locally high grade
- Historical resource estimate
- AC/RC drilling confined to areas of outcrop – significant upside
- Close to the Glencore Murrin Murrin operations

Leonora East Project

Monarch Gold Trends – Multiple High-Grade Occurrences over 15 km Strike



Golden Mile Resources - Summary



Discovery – Evaluation – Development

Listing to Discovery at Quicksilver in less than 6 months, maiden resource estimate reported, potential to increase

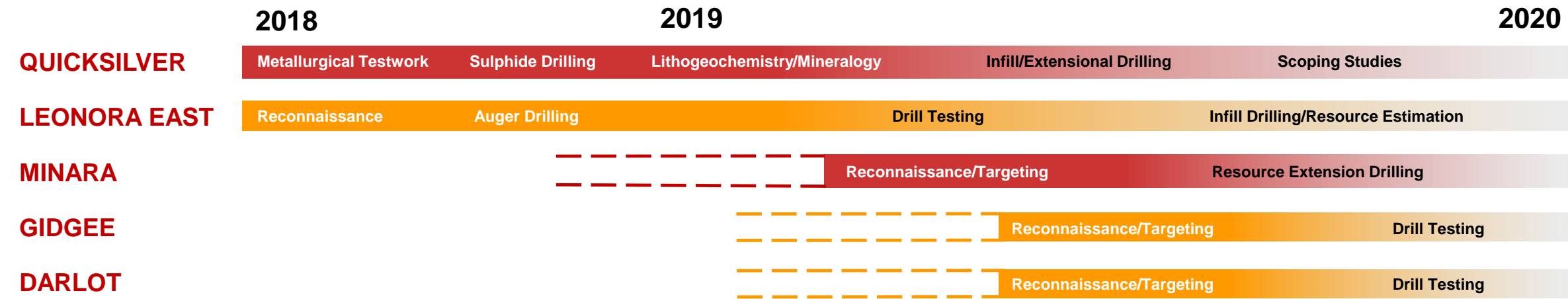
Prospective tenements held in the NE Goldfields, extensive strike length of gold mineralised structures

Commencing development program at Quicksilver with metallurgical testwork and detailed geological studies, progressing to scoping study

Experienced Board and Senior Management Team

Exciting exploration program ahead with drilling of 'Category 1' EM sulphide targets, potential for new discovery

Funded to undertake current exploration program and continue to generate positive news flow



Advancing WA's Newest



Nickel Discovery

goldenmleresources.com.au



Lachlan Reynolds

M: 0488 911 155

E: lreynolds@goldenmleresources.com

