



15 July 2025

## Bengwenyama Optimised Pre-Feasibility Study Non-Deal Roadshow Presentation

---

**Southern Palladium Limited** (ASX Code: SPD and JSE Code: SDL) releases the Company's Bengwenyama Optimised Pre-Feasibility Study Non-Deal Roadshow Presentation.

Authorised by the Executive Chairman.

**For further information, please contact:**

Johan Odendaal  
Managing Director  
Southern Palladium  
Phone: +27 82 557 6088  
Email: [johan.odendaal@southernpalladium.com](mailto:johan.odendaal@southernpalladium.com)

**Media & investor relations inquiries:** Sam Jacobs, Six Degrees Investor Relations: +61 423 755 909



Follow [@SouthernPalladium](https://twitter.com/SouthernPalladium) on Twitter



Follow [Southern Palladium](https://www.linkedin.com/company/southernpalladium) on LinkedIn

**Southern Palladium Limited**

ACN 646 391 899

Level 1, 283 George Street, Sydney NSW 2000 Australia

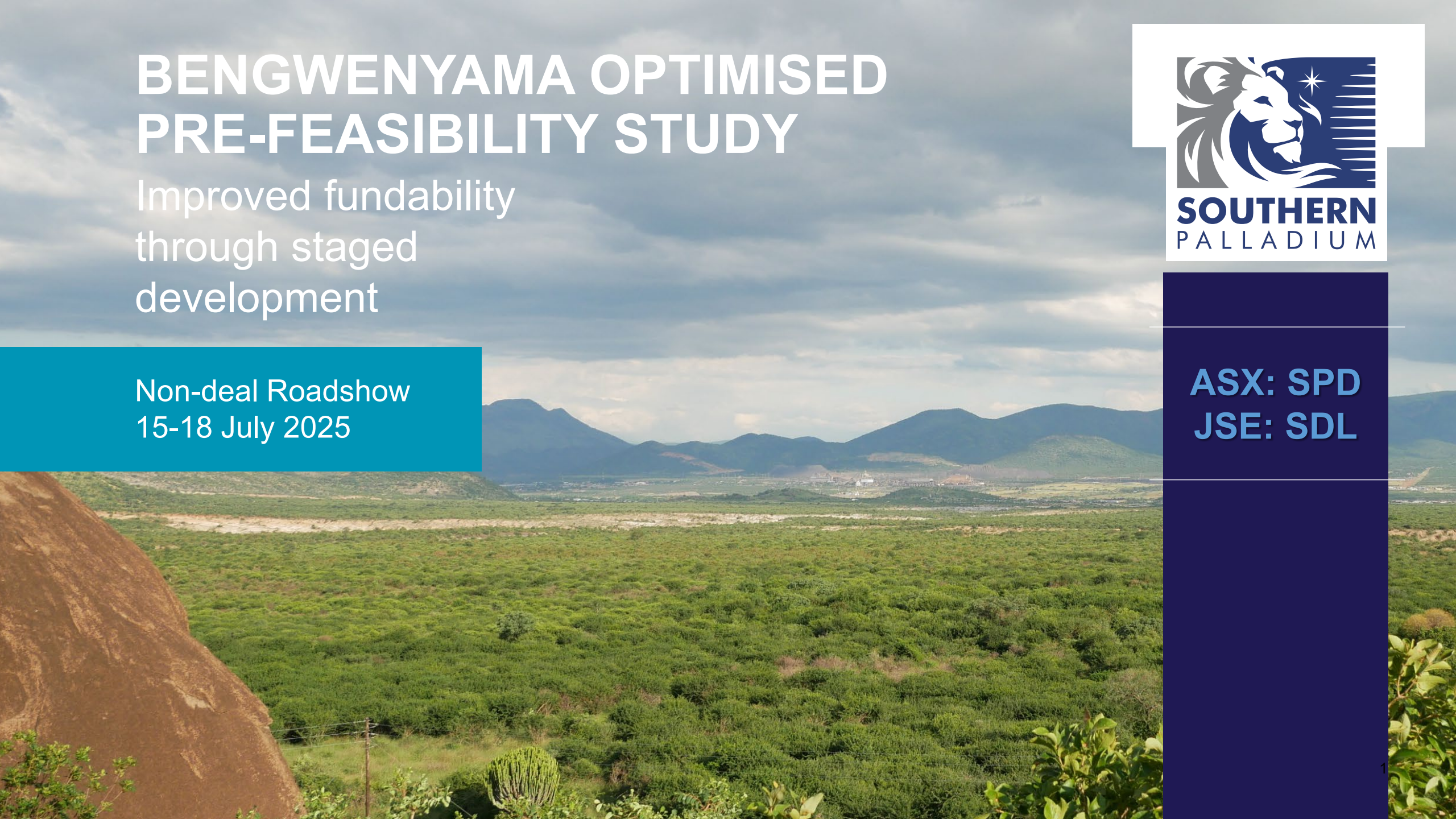
# BENGWENYAMA OPTIMISED PRE-FEASIBILITY STUDY

Improved fundability  
through staged  
development

Non-deal Roadshow  
15-18 July 2025



**ASX: SPD**  
**JSE: SDL**



# DISCLAIMER



The following disclaimer applies to this investor presentation (Presentation). You should read this disclaimer carefully before reading or making any other use of this Presentation or any information contained in this Presentation. By accepting this Presentation, you represent and warrant that you are entitled to receive this Presentation in accordance with the restrictions, and agree to be bound by the limitations, contained within it. This presentation has been prepared by Southern Palladium Limited ACN 646 391 89 (Company) for the purposes of its non-deal roadshow.

This Presentation contains summary information about the Company and its subsidiaries (Group) and their activities which is current only as at the date of this Presentation. The information in this Presentation is of a general nature and does not purport to be complete or comprise all the information which a prospective investor may require in evaluating a possible investment in the Company or that would be required in a prospectus or other disclosure document prepared in accordance with the requirements of the Corporations Act 2001 (Cth) (Corporations Act). The distribution of this Presentation (including an electronic copy) outside Australia may be restricted by law. If you come into possession of this Presentation, you should observe such restrictions and seek your own advice on such restrictions. Any non-compliance with these restrictions may contravene applicable securities laws.

The information contained in this Presentation is not financial product, investment, legal, taxation or other advice or any recommendation to acquire securities in the Company. No reliance may be placed for any purpose whatsoever on the information contained in this Presentation. This Presentation does not and will not form any part of any contract for the acquisition of securities in the Company. This Presentation has been prepared without taking into account your investment objectives, financial situation or particular needs. Before making an investment decision, you should make your own enquiries and investigations, and consider whether it is a suitable investment for you in light of your own investment objectives, financial situation and particular needs, having regard to the merits or risks involved. An investment in securities in the Company is subject to investment and other known and unknown risks, some of which are beyond the control of the Group. The Company does not guarantee any particular rate of return or the performance of its securities, nor does it guarantee any particular tax treatment. You should carefully consider the risks outlined in this Presentation before making an investment decision.

This Presentation contains forward looking statements, including statements regarding the Company's intentions, beliefs or current expectations about the Group's business and operations, and market conditions. Forward looking statements can generally be identified using forward looking words such as, "expect", "anticipate", "likely", "intend", "should", "could", "may", "predict", "plan", "propose", "will", "believe", "forecast", "estimate", "target" and other similar expressions. Forward looking statements are provided as a general guide only and should not be relied upon as an indication or guarantee of future performance. Forward looking statements involve known and unknown risks, uncertainties, assumptions and contingencies which are subject to change without notice, as are statements about market and industry trends which are based on interpretations of current market conditions. Actual results, performance or achievements may vary materially from any forward looking statements and the assumptions on which statements are based. Except as required by law or regulation, the Group disclaims all obligations to update publicly any forward looking statements, whether as a result of new information, future events or results or otherwise. Past performance information given in this Presentation is given for illustrative purposes only and should not be relied upon as an indication of future performance.

Certain market and industry data used in connection with this Presentation may have been obtained from research, surveys or studies conducted by third parties, including industry or general publications. Neither the Group nor its representatives have independently verified any such market or industry data provided by third parties or industry or general publications. No representation or warranty, express or implied, is made as to its fairness, accuracy, correctness, completeness or adequacy.

None of the Group's advisers, directors, officers, employees or agents have authorised, permitted or caused the issue, dispatch or provision of this Presentation nor, except to the extent referred to in this Presentation, made or purported to make any statement in this Presentation. To the maximum extent permitted by law, the Group and its advisers expressly disclaim all liabilities and responsibility in respect of any expenses, losses, damages or costs incurred by any recipient as a result of the use or reliance on anything contained in or omitted from the information in this Presentation, including, without limitation, any liability arising from fault or negligence or otherwise, and make no representation or warranty, express or implied, as to the fairness, currency, accuracy, reliability or completeness of the information contained in this Presentation.

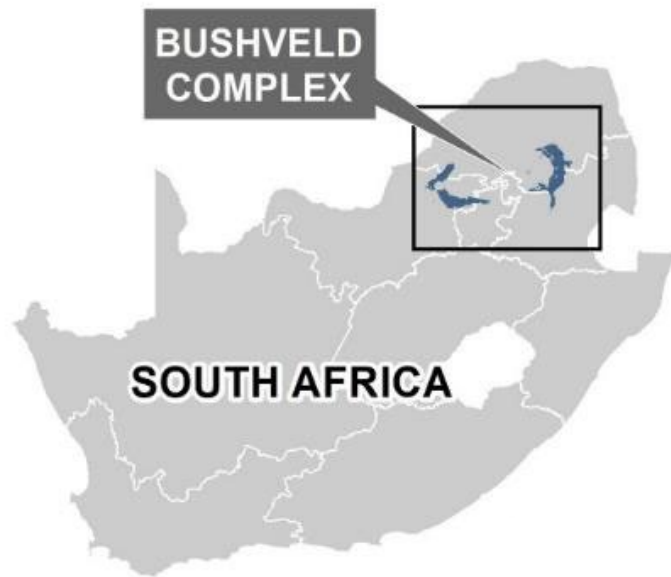
This Presentation does not constitute an offer to sell, or the solicitation of an offer to buy, any securities in the United States. Securities in the Company have not been, nor will be, registered under the U.S. Securities Act of 1933, as amended (U.S. Securities Act) or the securities laws of any state or other jurisdiction of the United States. Accordingly, the securities in the Company may not be offered or sold, directly or indirectly to, persons in the United States or persons who are acting for the account or benefit of a person in the United States unless they have been registered under the U.S. Securities Act (which the Company has no obligation to do so or procure) or in a transaction exempt from, or not subject to, the registration requirements of the U.S. Securities Act and any other applicable U.S. state securities laws.

All dollar values are in US dollars, unless otherwise stated.

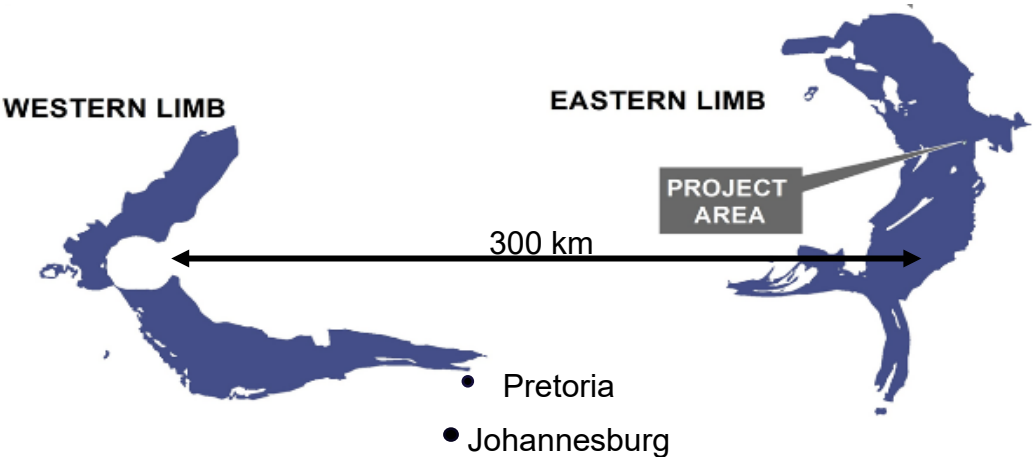


# TIER-1 PLATINUM GROUP METAL (PGM) ASSET

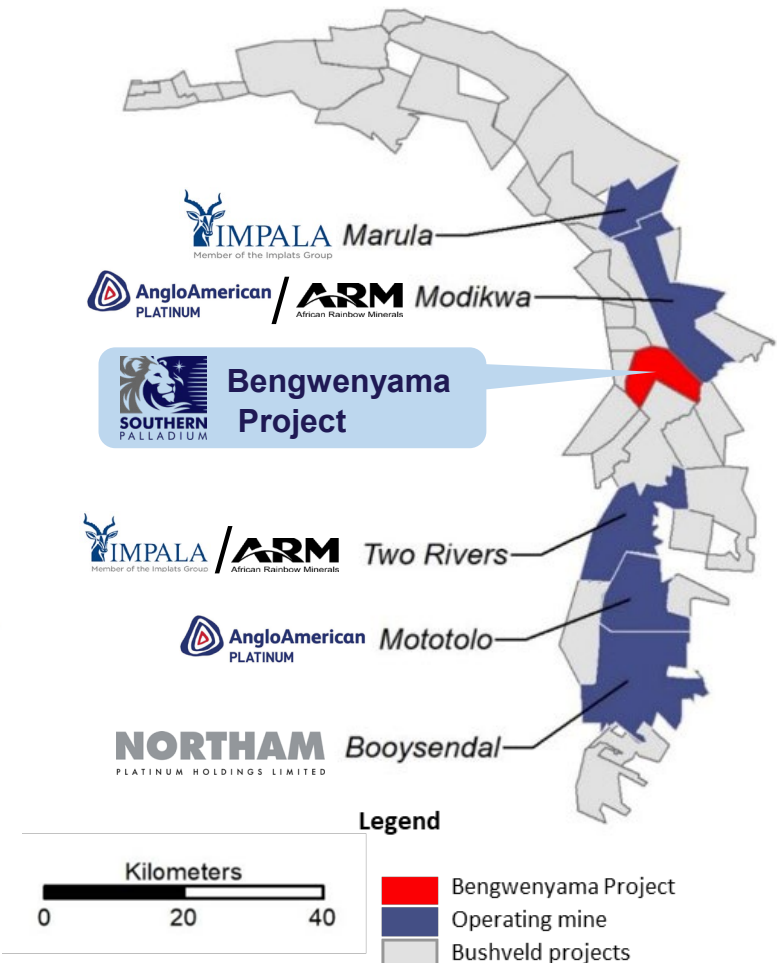
## IDEALLY LOCATED AMONG WELL-ESTABLISHED MINING OPERATIONS WITH EXISTING INFRASTRUCTURE



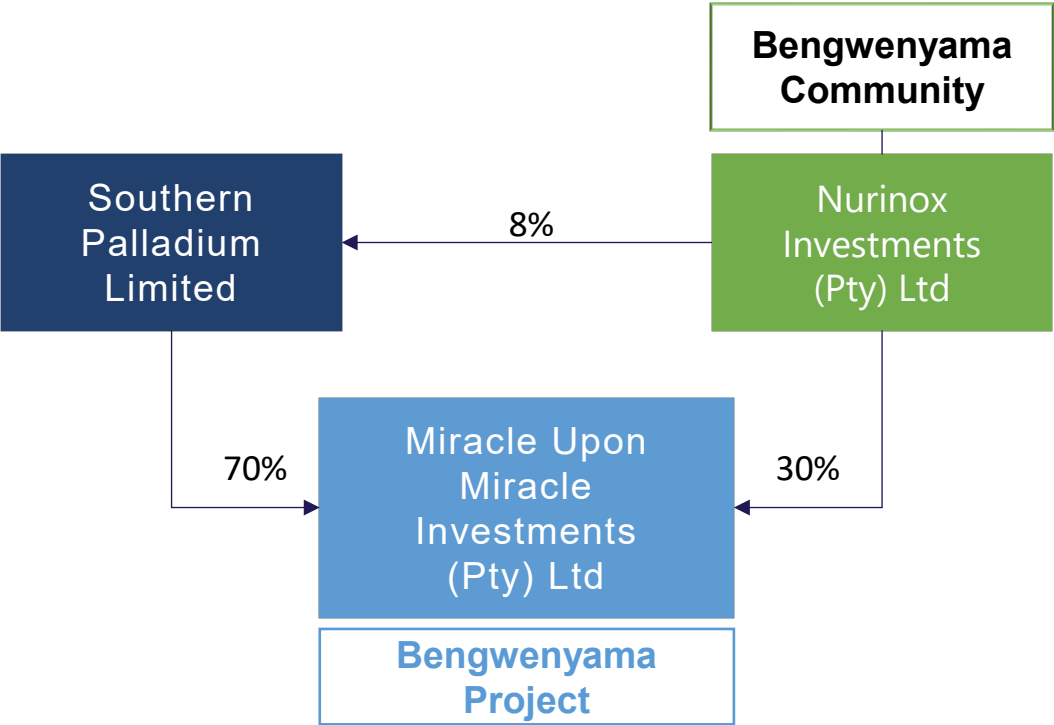
44 Ru Ruthenium	45 Rh Rhodium	46 Pd Palladium	+ Ni+Cu+Cr <sub>2</sub> O <sub>3</sub>
76 Os Osmium	77 Ir Iridium	78 Pt Platinum	
		79 Au Gold	



### EASTERN LIMB

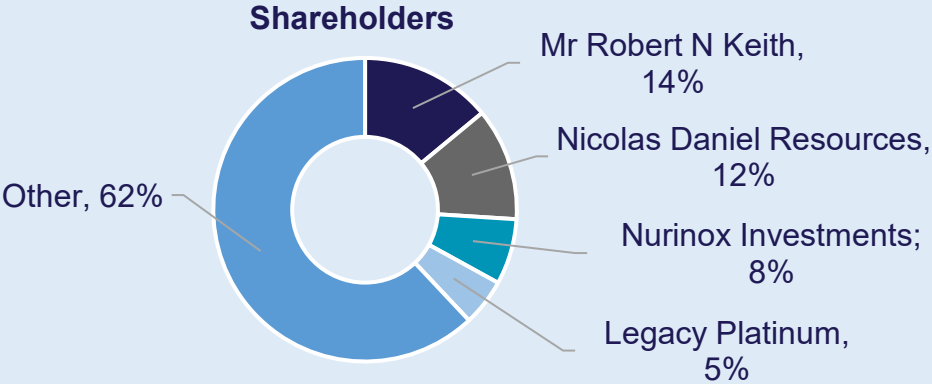


# CORPORATE OVERVIEW



Share price ASX/JSE	A\$0.6	ZAc649
	A\$	ZAR
Total number of shares issued	106.95m	
Market cap <sup>1</sup>	65m	747m
Cash at bank (9 July 2025 – unaudited)	10.3m	119.7m
Enterprise value	53.9m	627m
Options with exercise price of A\$0.875 expires June 2026 <sup>2</sup>	7.33m	
Options with exercise price of A\$0.70 expires 30 September 2027 <sup>3</sup>	0.875m	
As at:	09 Jul 2025	
AUD/ZAR	11.63	
AUD/US\$	0,65	

1. Using AUD price
2. At 75% premium to IPO issue price
3. At 75% premium over the 20-day VW AP of the Company’s share price as traded on the ASX up to 30 September 2024

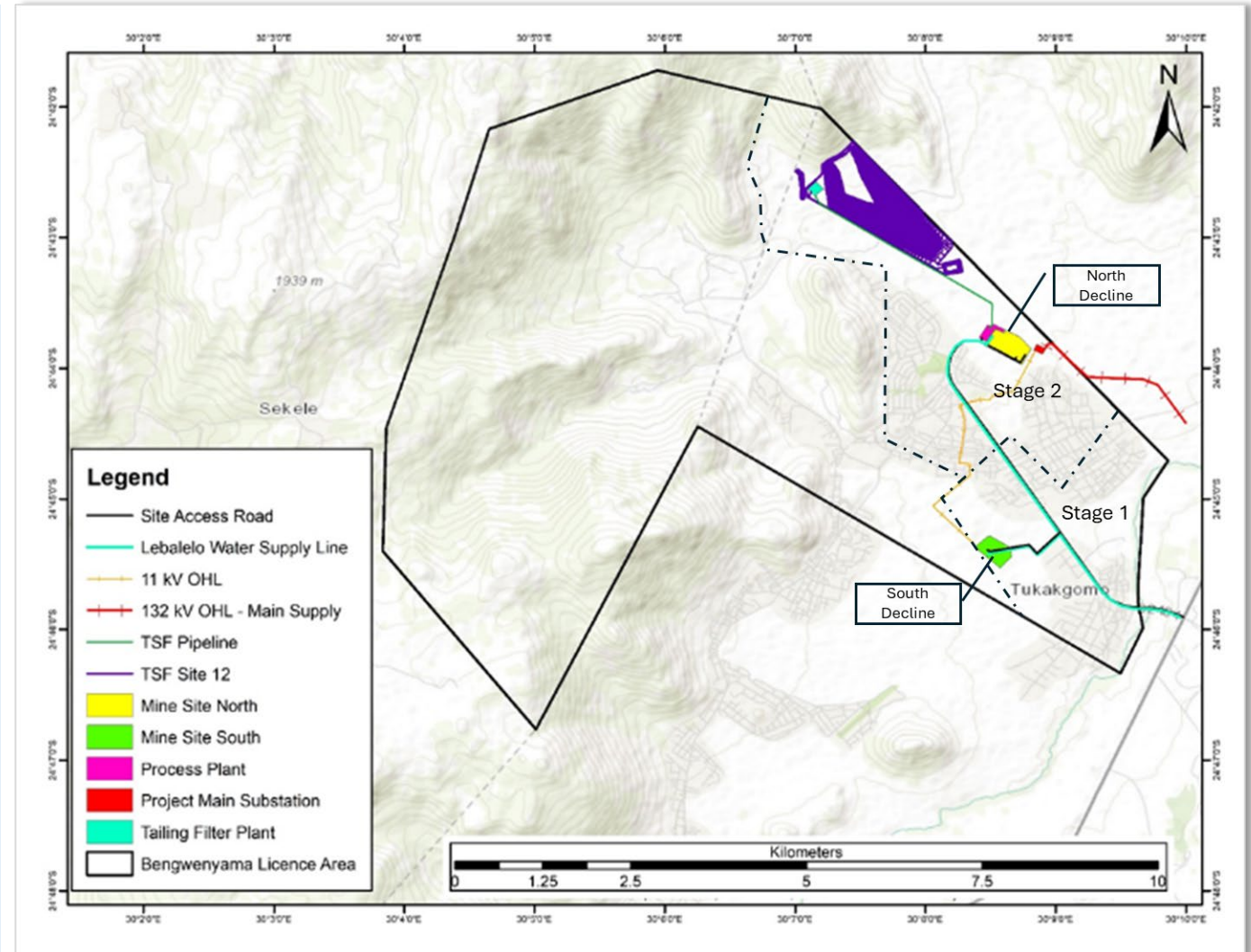


Major Shareholders	
Top 20 holders	71%
Directors and Management	15%

# OPTIMISED PREFEASIBILITY STUDY

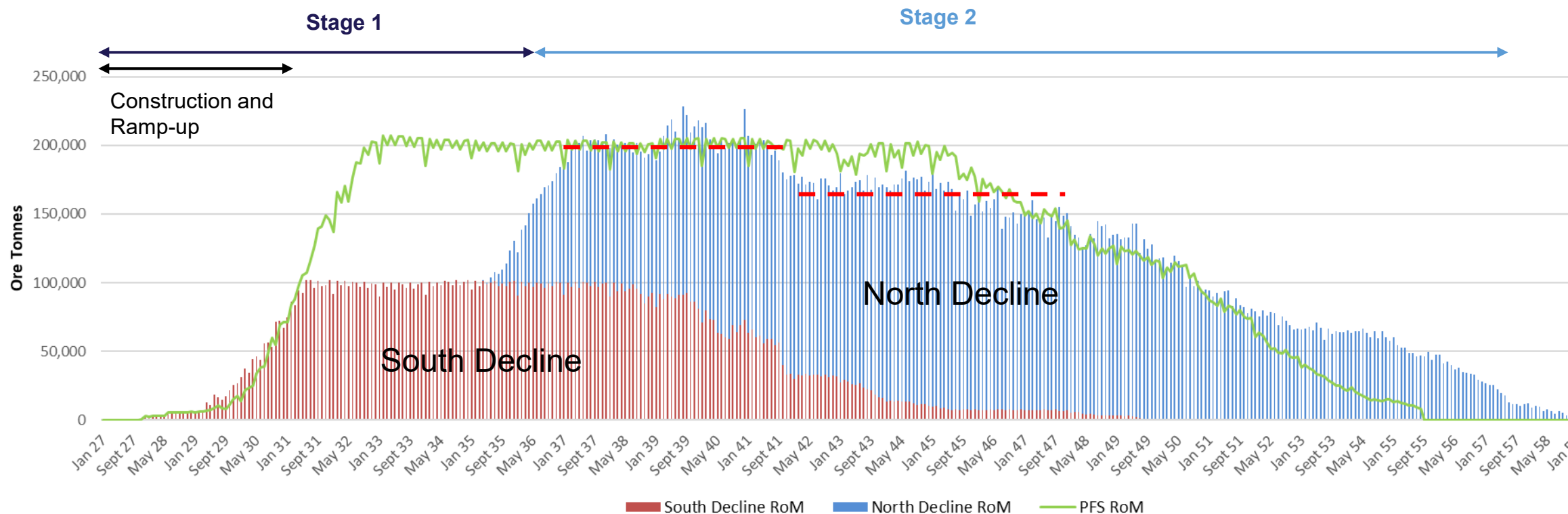
## STAGED PROCESS

- 2024 PFS confirmed that SPD can establish a **Tier 1** project on the UG2 with a LoM of more than 20 years.
- Next logical step was to **align the base case with alternative funding options**
- Strong focus on achieving **full production** capacity as quickly as possible
- **South Decline** enables faster access to the orebody, supporting early revenue generation and an optimised development timeline
- **Twin haulages** deployed during initial mining phase to accelerate access and support ramp-up to steady-state production



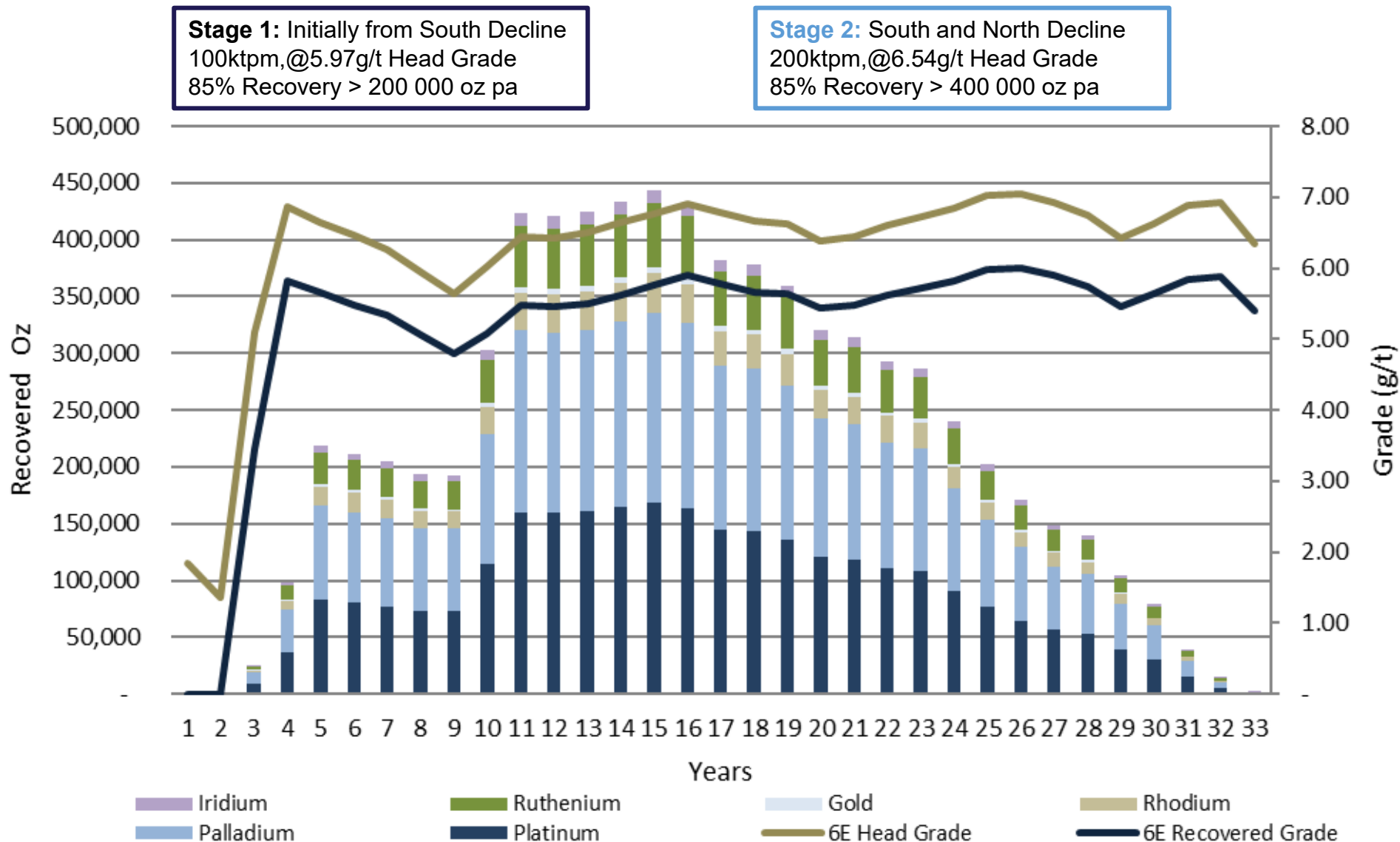
# OPTIMISED PREFEASIBILITY STUDY

## ORE PRODUCTION RAMP UP



# OPTIMISED PREFEASIBILITY STUDY

## PRODUCTION PROFILE





# OPTIMISED PREFEASIBILITY STUDY

## BENGWENYAMA KEY PROJECT RESULTS



### UG2 Reef

Stage 1 **1.2Mtpa**

Stage 2 **2.4Mtpa**

### Steady state production

Stage 1 **200koz pa**

Stage 2 **400koz pa**

### Peak funding requirement

Stage 1 **US\$279 million**  
38% less than PFS

Stage 2 funded through cash generated via Stage 1 production

### Costs (LOM avg)

#### All in Sustainable Costs (AISC):

Stage 1 **US\$969/6E oz**

Stage 2 **US\$821/6E oz**

### NPV<sub>8%</sub> (post-tax)

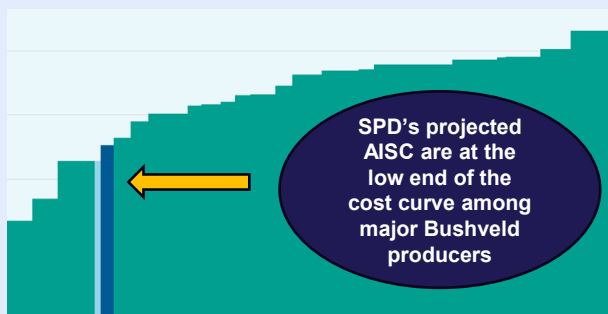
Stage 1 **Economically viable on its own**

Stage 2 **US\$857m**

### IRR (post-tax)

Stage 1 **21.8%**

Stage 2 **26.4%**



Source: Adapted from Rene Hochreiter (NOAH Capital Markets & Sieberana Research)

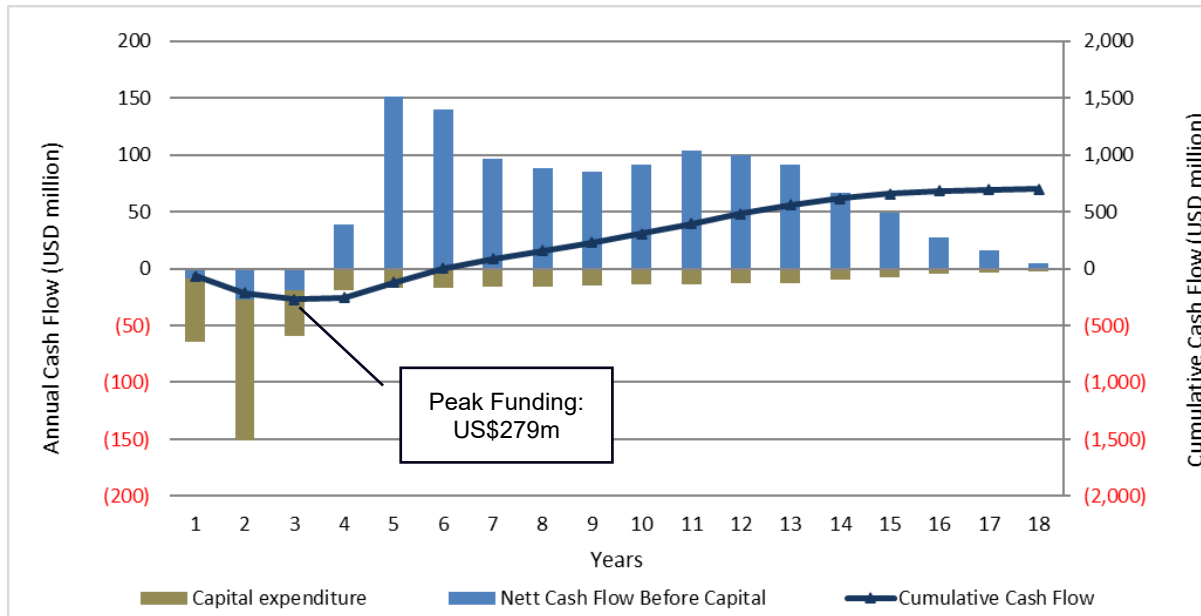
# OPTIMISED PREFEASIBILITY STUDY

## HIGHLY ATTRACTIVE OPTION

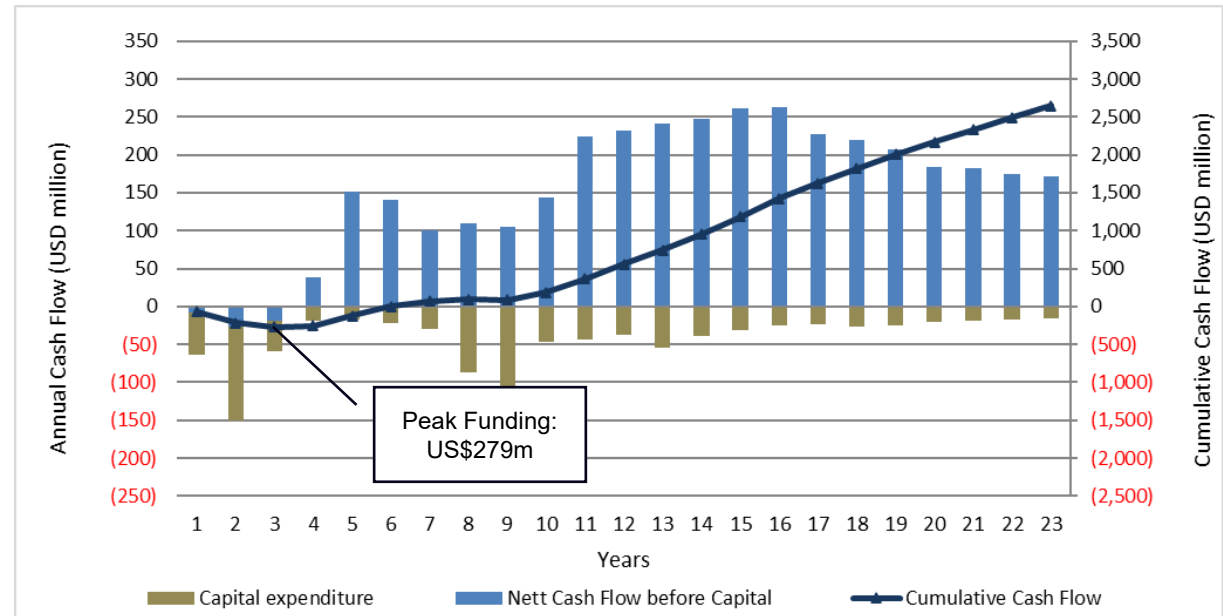


- Stage 1: Peak funding requirement of **US\$279m** – representing a 38% reduction (US\$173m) to the peak funding total set out in the PFS (US\$450m)
- Stage 2: expansion capital to be **funded through cashflow**

### Stage 1



### Stage 1 & Stage 2

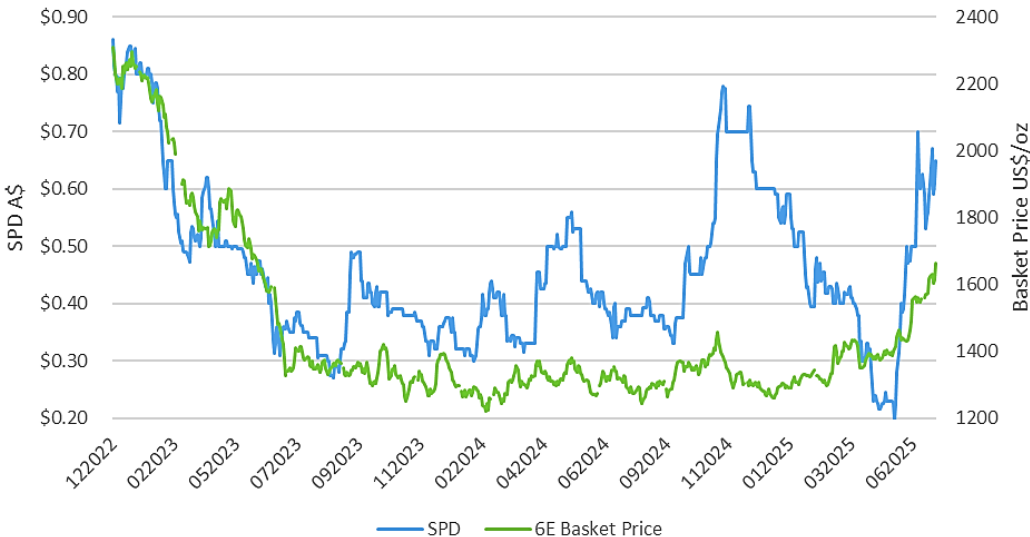
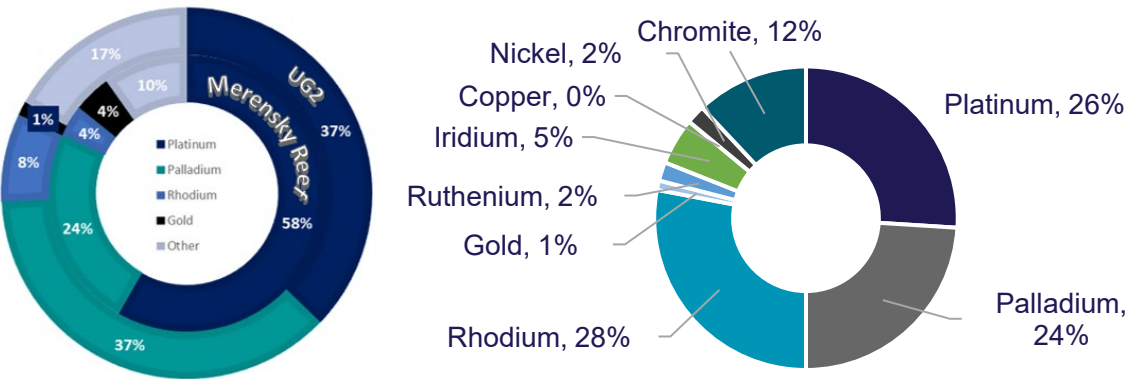


# GLOBAL PGM MARKETS

## STRUCTURAL DEFICIT DEVELOPING



Bengwenyama Prill Split and Revenue Split based on PFS



Note: Prices as at closing 9 July 2025

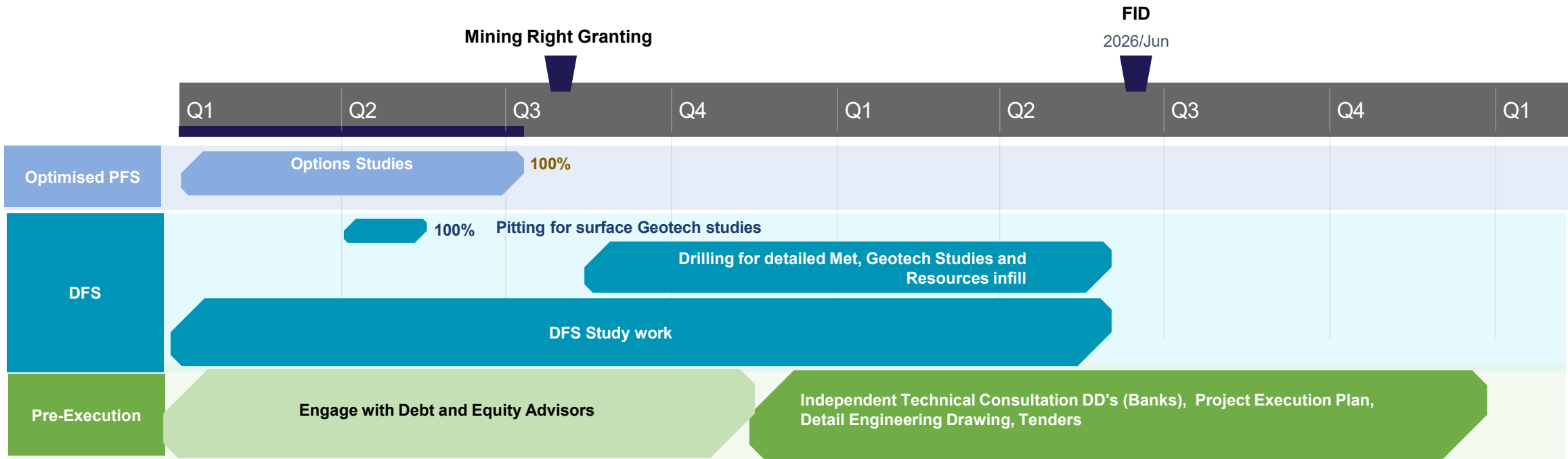
Market in structural deficit

	Platinum	Palladium	Rhodium
Demand 2025	7.7Moz	9.4Moz	1.0Moz
Automotive	Hybrid Cars winning – Growth Massive 26% Chinese consumers slow down EV DD as subsidies fall →		
Investment	Growing investment demand in China →		
Jewellery	Strong growth China Jewellery Sales →		
Data Storage	Explode in next 10 yrs from 175 to 2,142 Zetabytes: Pt&Ru		
Hydrogen Economy Ticking	Pt+Ir		
Primary Supply 2025	5.5Moz ↓	6.4Moz →	0.7Moz ↓
RSA share of supply	SA 70% of primary supply	SA 35%	SA 80%
Recycling	1.4 Moz	3.1 Moz	0.3 Moz
Net Demand	-736 to 900 Koz	-17 Koz	-39 Koz
	Deficit for next 5 years		
Above Ground Stocks	2.3 Moz		

Source: Johnson Matthey, WPIC

# PATHWAY TO DEVELOPMENT

## KEY NEAR-TERM MILESTONES TO UNLOCK VALUE





# OPTIMISED PREFEASIBILITY STUDY

## KEY TAKE AWAYS



- **Stage 1** is expected to be **strongly cash-generative** in its own right, making it well-suited to attract traditional, market-related project debt financing
- **Stage 2** could potentially be funded from cash flows generated during Stage 1
- The option to utilise existing mineral processing infrastructure in the area – which could significantly reduce peak funding requirements – is also under evaluation
- Near-term value catalysts for **Bengwenyama PGM Project**:
  - issue of Mining Right anticipated in the near term
  - infill drilling and metallurgical test work program, to be incorporated with Optimised PFS results into planned Definitive Feasibility Study (DFS)



# CONTACT US

Johannesburg, South Africa

Coldstream Office Park, Suite 6  
2 Coldstream Street  
Little Falls  
Roodepoort  
Johannesburg

Sydney, Australia

Level 1, 283 George Street,  
Sydney, NSW 2000

Email:  
[info@southernpalladium.com](mailto:info@southernpalladium.com)



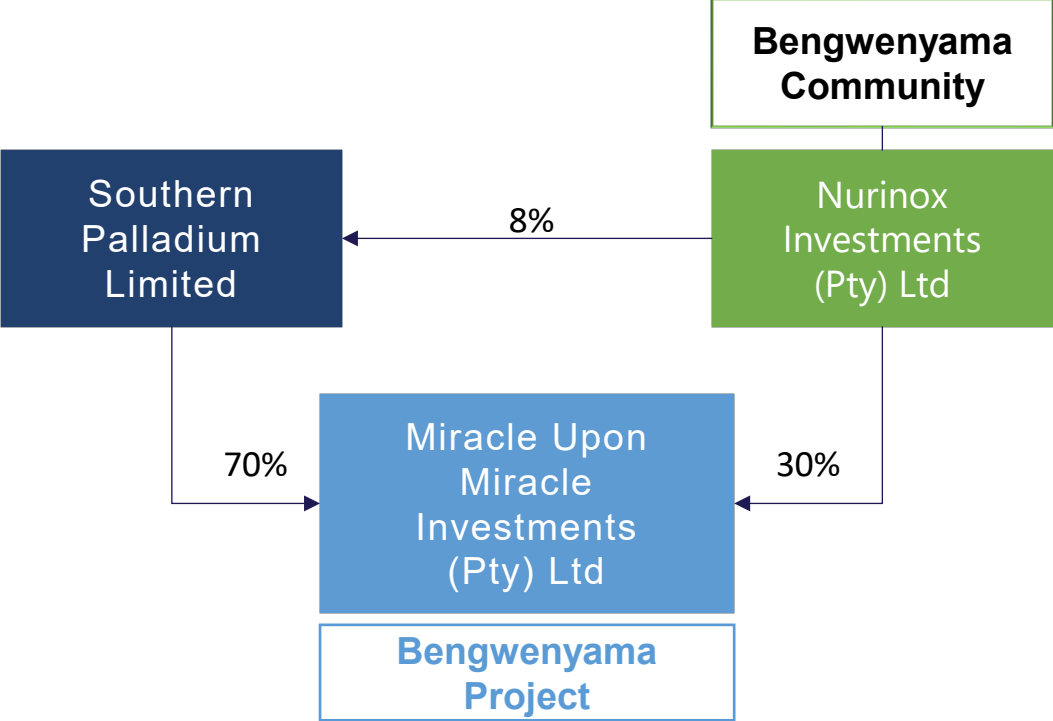
*The information in this presentation relating of Resources and Reserves is extracted from the report entitled "Prefeasibility Study Results: Project NPV8 of USD1.059bn Maiden JORC Ore Reserve of 6.29 million oz @ 6.17g/t PGM (6E) created on 28 October 2024 and is available to view on the Company's website at <https://www.southernpalladium.com/site/pdf/ffc418cf-eed6-40e3-b281-775356e029e1/Bengwenyama-PreFeasibility-Study-Project-NPV-of-US1059bn.pdf>. The company confirms that it is not aware of any new information or data that materially affects the information included in the original market announcement and, in the case of estimates of Mineral Resources or Ore Reserves, that all material assumptions and technical parameters underpinning the estimates in the relevant market announcement continue to apply and have not materially changed. The Company confirms that the form and context in which the Competent Person's findings are presented have not been materially modified from the original market announcement.*



# APPENDIX



# CORPORATE STRUCTURE AND DIRECTORS



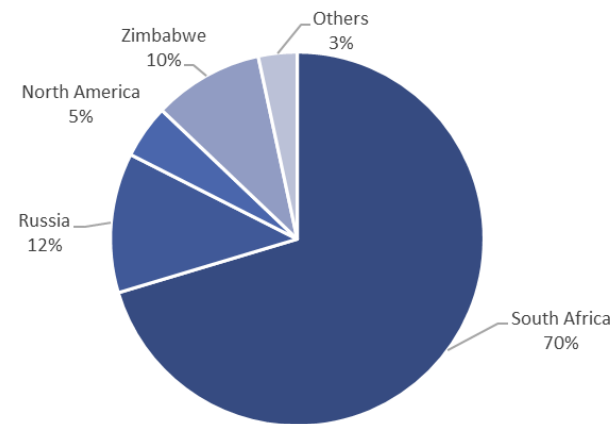
BOARD OF DIRECTORS – SOUTHERN PALLADIUM (SPD)		
 <b>Roger Baxter</b> Executive Chairperson	 <b>Johan Odendaal</b> Managing Director CEO MUM	<b>NON-EXECUTIVE DIRECTORS</b> Mike Stirzaker NED MUM Daan van Heerden NED MUM Lindi Nkosi Chairperson MUM Rob Thomson  <b>COMPANY SECRETARY</b> Andrew Cooke
BOARD OF DIRECTORS – MIRACLE UPON MIRACLE (MUM)		
 <b>Adv. Lindi Nkosi-Thomas</b> Non-Executive Chairperson	 <b>Daniel Nkosi</b> Executive Director – Site Manager and Community Affairs	 <b>Joel Nkosi</b> Non-Executive Director, Deputy Chairman Bengwenyama Traditional Council
	<b>Project Managers: Minxcon</b> <b>Uwe Engelmann</b> Exploration and Resource Geologist	



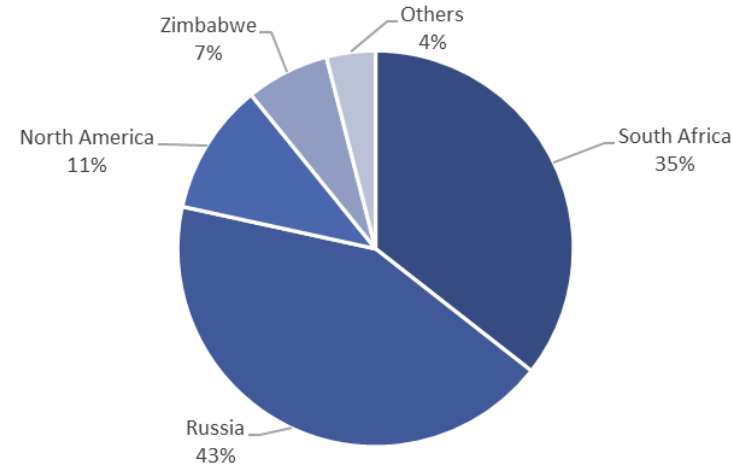
# PLATINUM GROUP METAL INDUSTRY – 2025



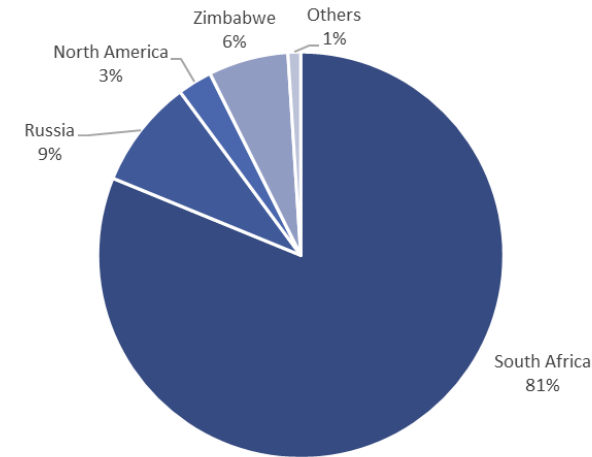
Platinum Supply - 5,542koz



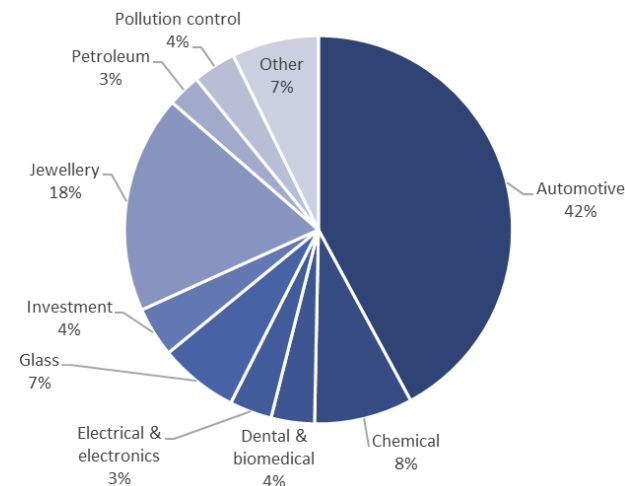
Palladium Supply – 6,372koz



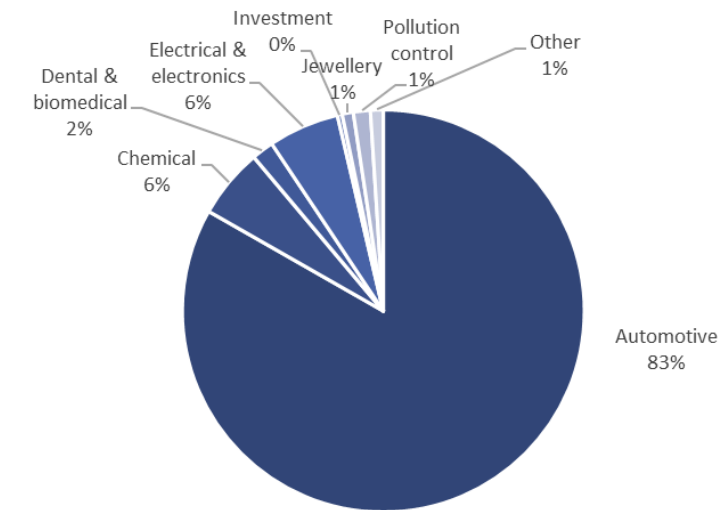
Rhodium Supply - 691koz



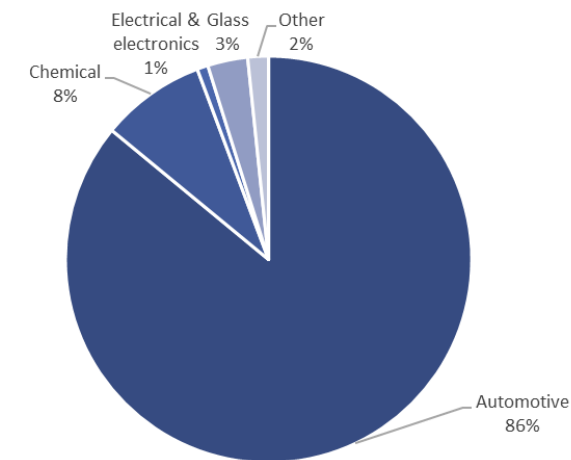
Secondary Supply – 1,385koz  
Platinum Demand – 7,663koz



Secondary Supply – 3,058koz  
Palladium Demand – 9,447koz



Secondary Supply – 303koz  
Rhodium Demand – 1,033koz

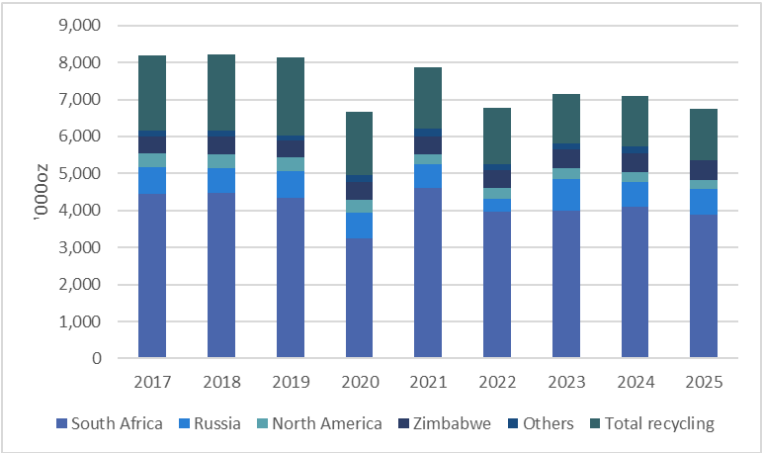


Source: Johnson Matthey PGM Market Report 2025

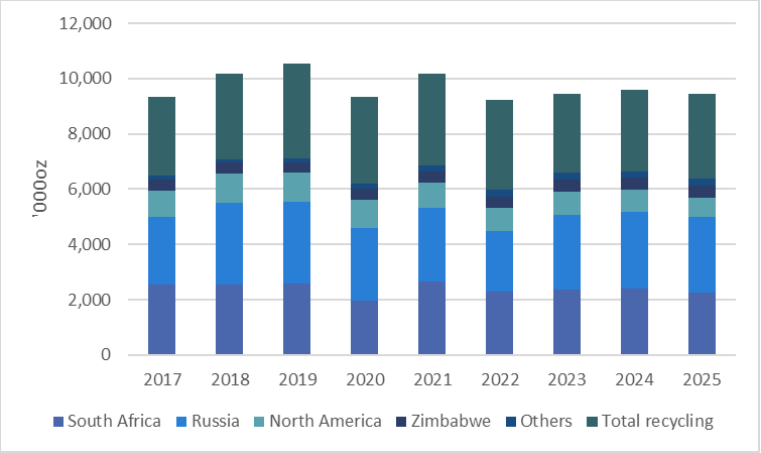
# PLATINUM GROUP METAL INDUSTRY – 2025



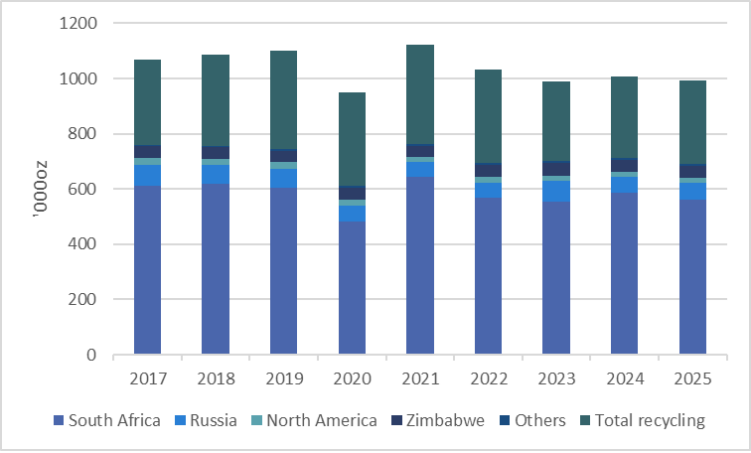
Platinum



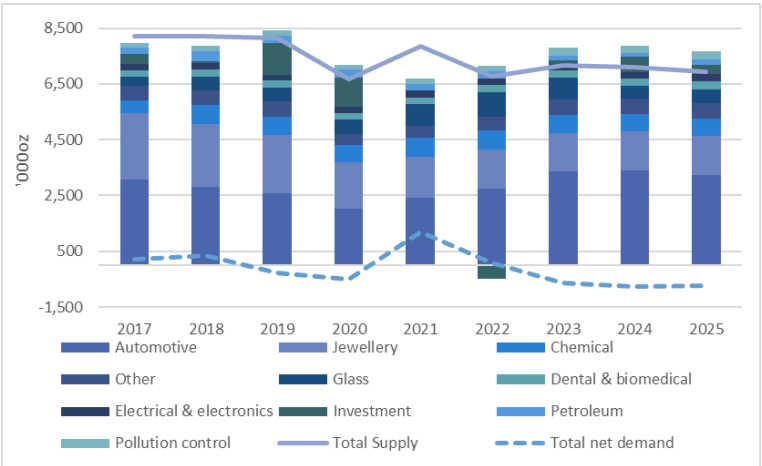
Palladium Supply



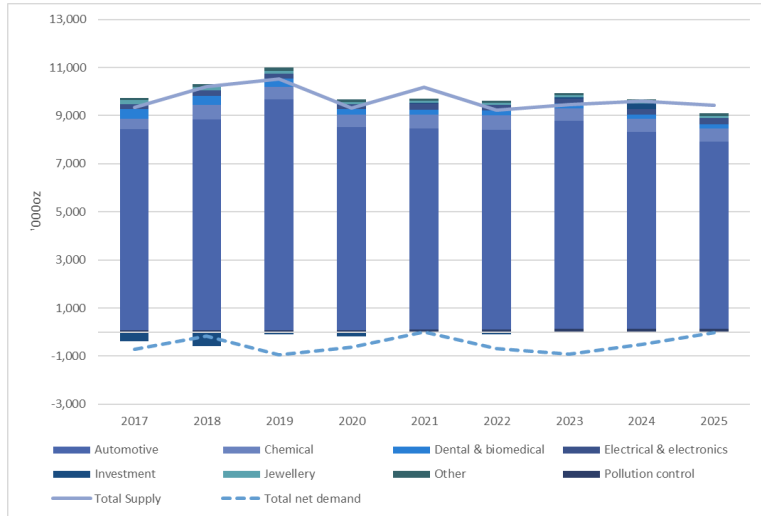
Rhodium Supply



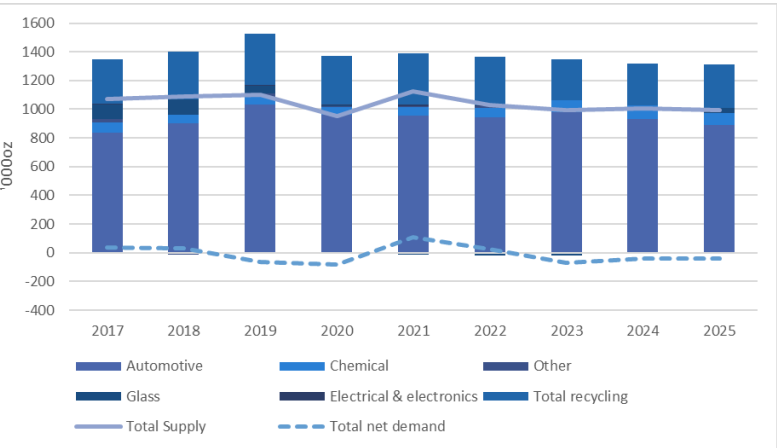
Platinum Demand



Palladium Demand



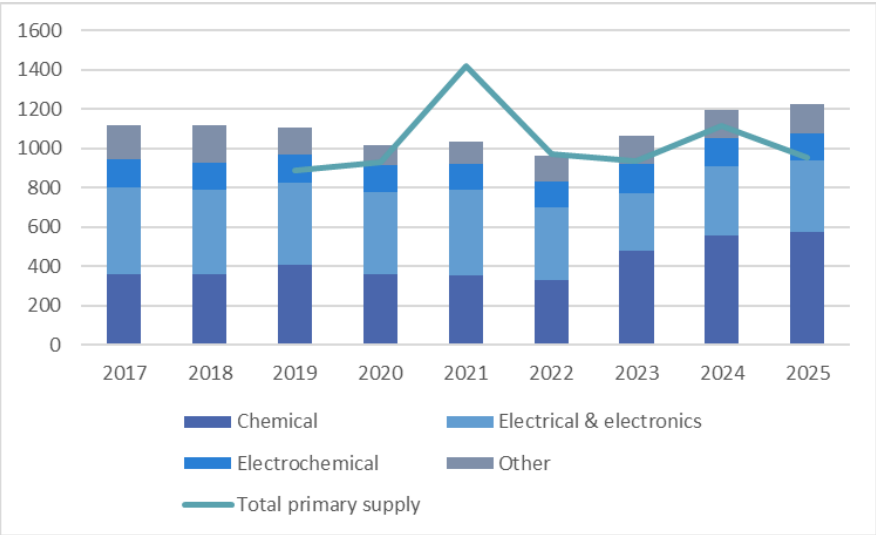
Rhodium Demand



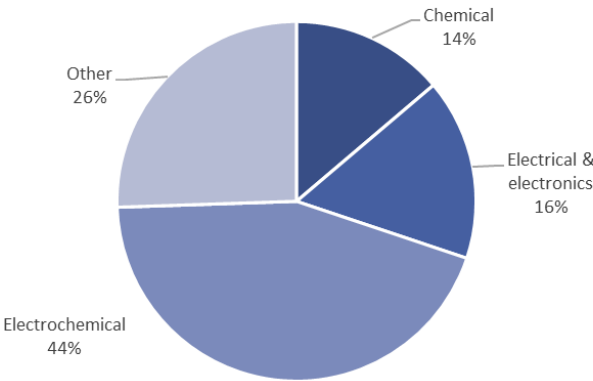
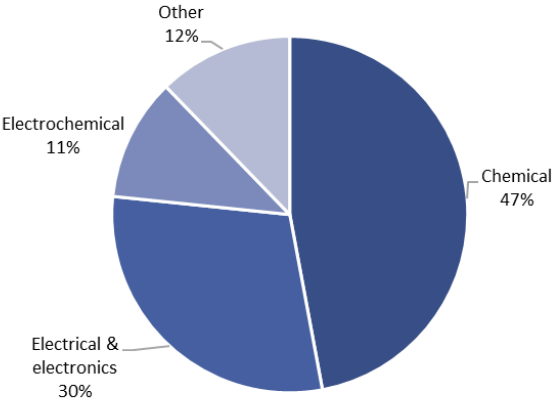
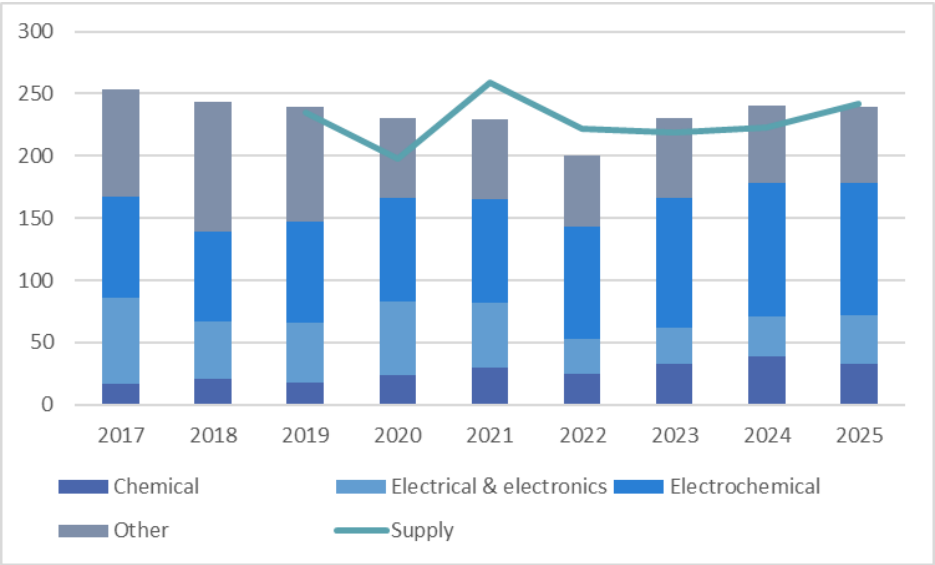
# PLATINUM GROUP METAL INDUSTRY – 2025



Ruthenium Supply – 950koz  
Ruthenium Demand – 1,224koz



Iridium Supply – 242koz  
Iridium Demand – 239koz



# OPTIMISED PRE-FEASIBILITY STUDY

## ECONOMIC INPUT PARAMETERS



### Macro-economic Forecasts and Commodity Prices over the Life of Project

Commodity	Unit	Basis	2025	2026	2027	2028	Long-term
Platinum	USD/oz	Real	1,114	1,147	1,143	1,151	1,200
Palladium	USD/oz	Real	1,020	975	922	978	1,100
Rhodium	USD/oz	Real	5,468	5,515	5,333	5,803	6,190
Gold	USD/oz	Real	2,440	2,263	2,163	2,073	1,950
Ruthenium	USD/oz	Real	450	450	450	450	450
Iridium	USD/oz	Real	4,650	4,650	4,650	4,650	4,650
Chrome Conc. 42%	USD/t	Real	225	225	225	225	225
Copper	USD/t	Real	9,585	9,526	9,287	9,211	8,708
Nickel	USD/t	Real	17,025	17,284	17,615	17,805	18,249
Exchange Rate	ZAR/USD	Real	18.51	18.86	19.22	19.58	19.58