

ASX:NXM



# NEXUSMINERALS

**Investor Presentation  
September 2015**

[www.nexus-minerals.com](http://www.nexus-minerals.com)





# NEXUS MINERALS

## DISCLAIMER & COMPETENT PERSONS STATEMENT

• This document contains forward looking statements. Forward looking statements are not based on historical facts, but are based on Nexus's current expectations of future results or events. These forward looking statements are subject to risks, uncertainties and assumptions which could cause actual results or events to differ materially from the expectations described in such forward looking statements. While Nexus believes that the expectations reflected in the forward looking statements in this document are reasonable, no assurance can be given that such expectations will prove to be correct. Matters as yet not known to Nexus or not currently considered material by Nexus, may cause actual results or events to be materially different from those expressed, implied or projected in any forward looking statements. Any forward looking statement contained in this document is qualified by this cautionary statement.

• The information contained in this presentation is for informational purposes only and does not constitute an offer to issue, or arrange to issue, securities or other financial products. The information contained in this presentation is not investment or financial product advice and is not intended to be used as the basis for making an investment decision. The presentation has been prepared without taking into account the investment objectives, financial situation or particular needs of any particular person.

• No representation or warranty, express or implied, is made as to the fairness, accuracy, completeness or correctness of the information, opinions and conclusions contained in this presentation. To the maximum extent permitted by law, none of Nexus Minerals Limited, its directors, employees or agents, nor any other person accepts any liability, including, without limitation, any liability arising out of fault of negligence, for any loss arising from the use of the information contained in this presentation. In particular, no representation or warranty, express or implied is given as to the accuracy, completeness or correctness, likelihood of achievement or reasonableness or any forecasts, prospects or returns contained in this presentation nor is any obligation assumed to update such information. Such forecasts, prospects or returns are by their nature subject to significant uncertainties and contingencies.

• Before making an investment decision, you should consider, with or without the assistance of a financial adviser, whether an investment is appropriate in light of your particular investment needs, objectives and financial circumstances. Past performance is no guarantee of future performance.

• The distribution of this document in jurisdictions outside Australia may be restricted by law. Any recipient of this document outside Australia must seek advice on and observe any such restrictions.

• In particular, this presentation does not constitute an offer to sell, or a solicitation of an offer to buy, securities in the United States or to any "U.S. person" (as defined in Regulation S under the U.S. Securities Act of 1933, as amended ("Securities Act")). The securities referred to in this presentation have not been and will not be registered under the Securities Act or under the securities laws of any state in the United States. Securities may not be offered or sold in the United States or to, or for the account or benefit of, any U.S. person, unless the securities have been registered under the Securities Act or an exemption from registration is available.

• The information in this report that relates to Exploration Results, Mineral Resources or Ore Reserves is based on information compiled by Mr Andy Tudor, who is a Member of The Australasian Institute of Mining and Metallurgy and the Australian Institute of Geoscientists. Mr Tudor is a full time employee of Nexus Minerals Limited.

• Mr Tudor has sufficient experience which is relevant to the style of mineralisation and type of deposit under consideration and to the activity which he is undertaking to qualify as a Competent Person as defined in the 2012 Edition of the 'Australasian Code for Reporting of Exploration Results, Mineral Resources and Ore Reserves'.

• The exploration results are available to be viewed on the Company website [www.nexus-minerals.com](http://www.nexus-minerals.com). The Company confirms it is not aware of any new information that materially affects the information included in the original announcement. The Company confirms that the form and context in which the Competent Person's findings are present have not been materially modified from the original announcements.

• Mr Tudor consents to the inclusion in the report of the matters based on his information in the form and context in which it appears.

[www.nexus-minerals.com](http://www.nexus-minerals.com)



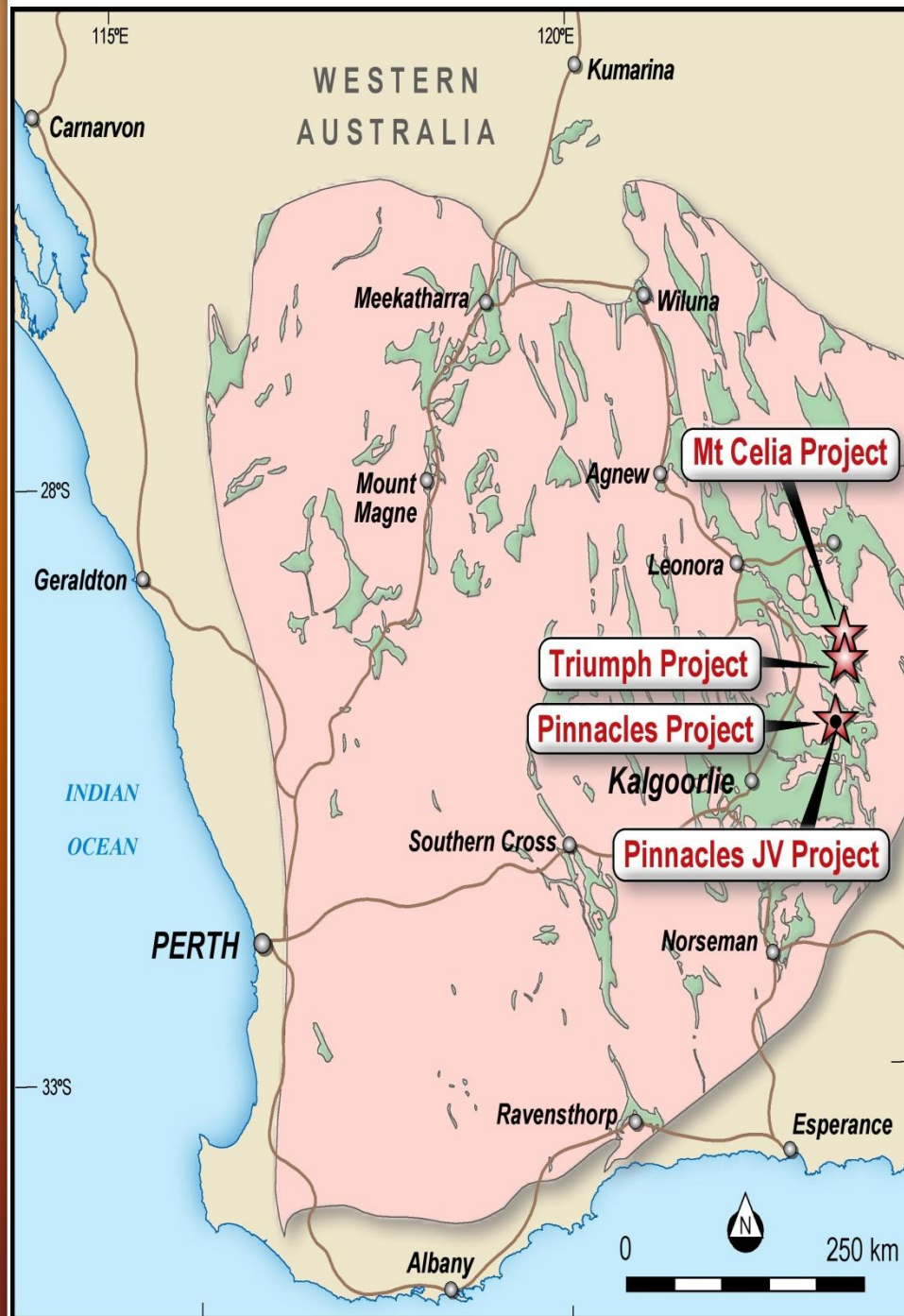
<b>Nexus Minerals Limited</b>	<b>ASX: NXM</b>
<b>Shares</b>	<b>70.4 million</b>
<b>Share Price August 2015</b>	<b>AUD 0.055</b>
<b>Treasury (31 August 2015)</b>	<b>\$6.1million</b>
<b>Shareholders</b>	<b>725</b>
<b>Top 20</b>	<b>53.30%</b>

--

<b>BOARD AND MANAGEMENT</b>
-----------------------------

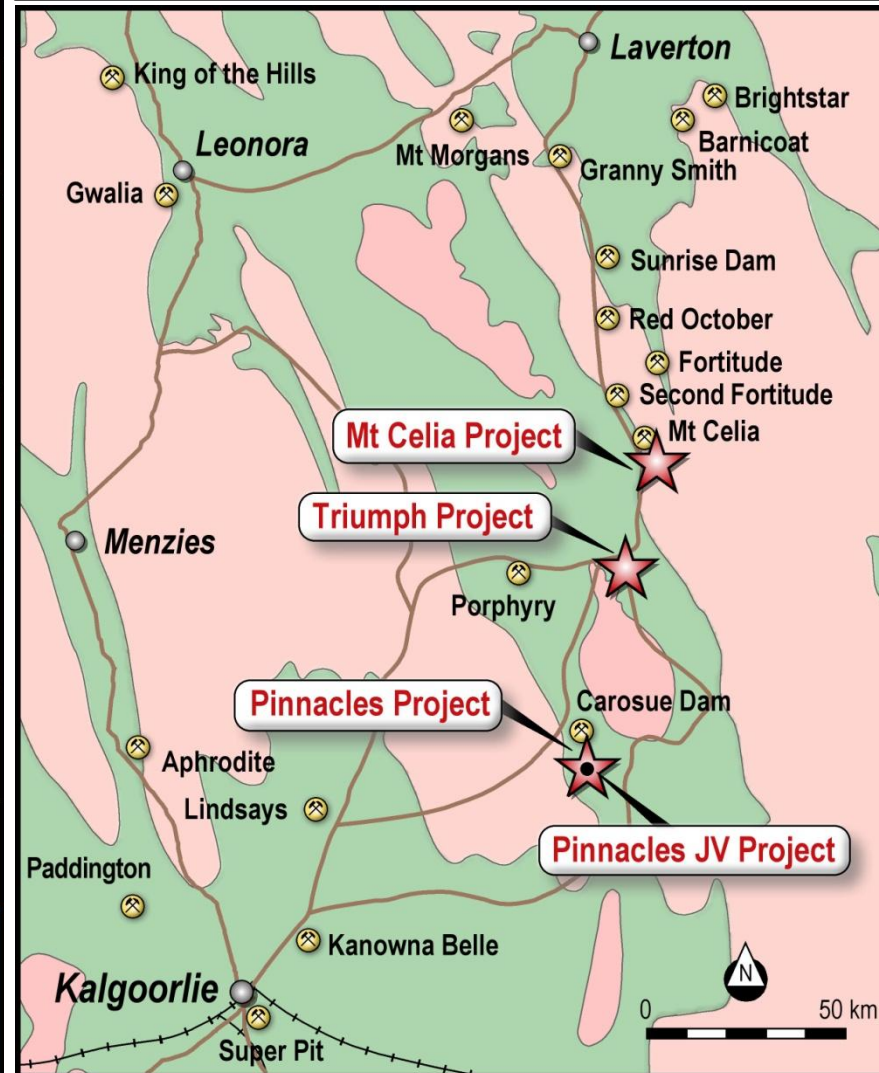
<b>Chairman</b>	<b>Mr Paul Boyatzis</b>
<b>Non - Executive Director</b>	<b>Dr Mark Elliott</b>
<b>Non - Executive Director</b>	<b>Mr Bruce Maluish</b>
<b>Non - Executive Director &amp; CoSec</b>	<b>Mr Phillip MacLeod</b>
<b>CEO &amp; Exploration Manager</b>	<b>Mr Andy Tudor</b>

<b>CASH</b>	<b>\$6.1million</b>
<b>COMMODITY</b>	<b>GOLD</b>
<b>STATUS</b>	<b>EXPLORATION</b>
<b>LOCATION</b>	<b>KALGOORLIE</b>
	<b>WA GOLDFIELDS</b>
<b>➤ NEW JV WITH SARACEN GOLD MINES</b>	
<b>➤ CAPABLE TEAM – EXPLORATION FOCUS</b>	
<b>❑ MULTIPLE WA GOLD DISCOVERIES</b>	
<b>❑ DEVELOPED TO MINE STAGE</b>	
<b>➤ LOOKING FOR HIGH VALUE PROPOSITIONS</b>	
<b>➤ AQUISITION OF SCALABLE PROJECTS</b>	



## Goldfields Western Australia

- Pinnacles JV Gold Project
- Pinnacles Regional Gold Project
- Triumph Gold Project
- Mt Celia Gold Project



**Nexus  
Projects**

## Project Maturity Profile

**Mine**

**MINING OPERATION**

**Resource  
Evaluation**

**Resource  
Definition**

**MINERAL DEPOSIT**

Prospects containing sufficient inferred width, grade and tonnage to warrant resource estimation and mining feasibility study

**Confirmation Drilling  
Deposit Confirmation**

**Major Drilling  
Target Testing**

**Detailed Surface Exploration  
Target Testing**

**Reconnaissance Exploration  
Target Identification  
Project Confirmation**

**MINERALISED TARGETS WITH SIGNIFICANT DRILL INTERSECTIONS**  
Numerous mineralised drill intersections showing a high degree of continuity

**MINERALISED TARGETS**

Prospects with numerous significant anomalous geochemical values or grade intersections and geological or geophysical indicators for size potential-discrete targets

**ANOMALOUS PROSPECTS**

Strong geochemical results or discrete geological or geophysical targets

**REGIONAL PROJECT AREA**

Favourable host rocks, structures and / or geophysical characteristics

**Project Generation & Ground Selection**

***Pinnacles JV***

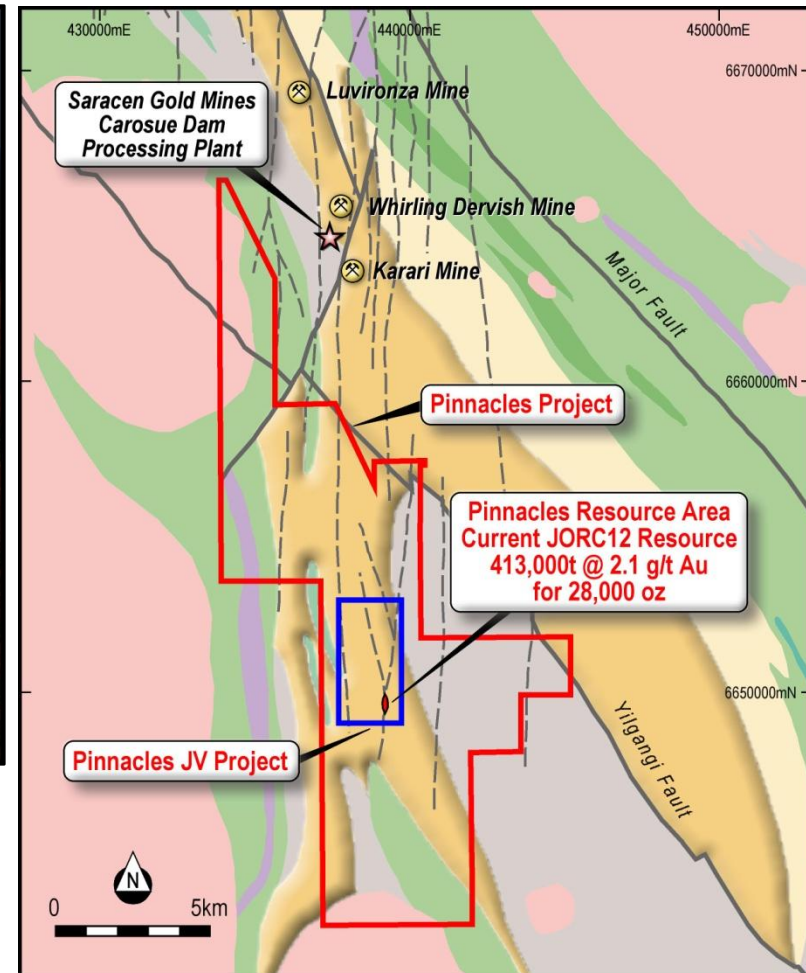
***Triumph***

***Pinnacles***

***Mt Celia***



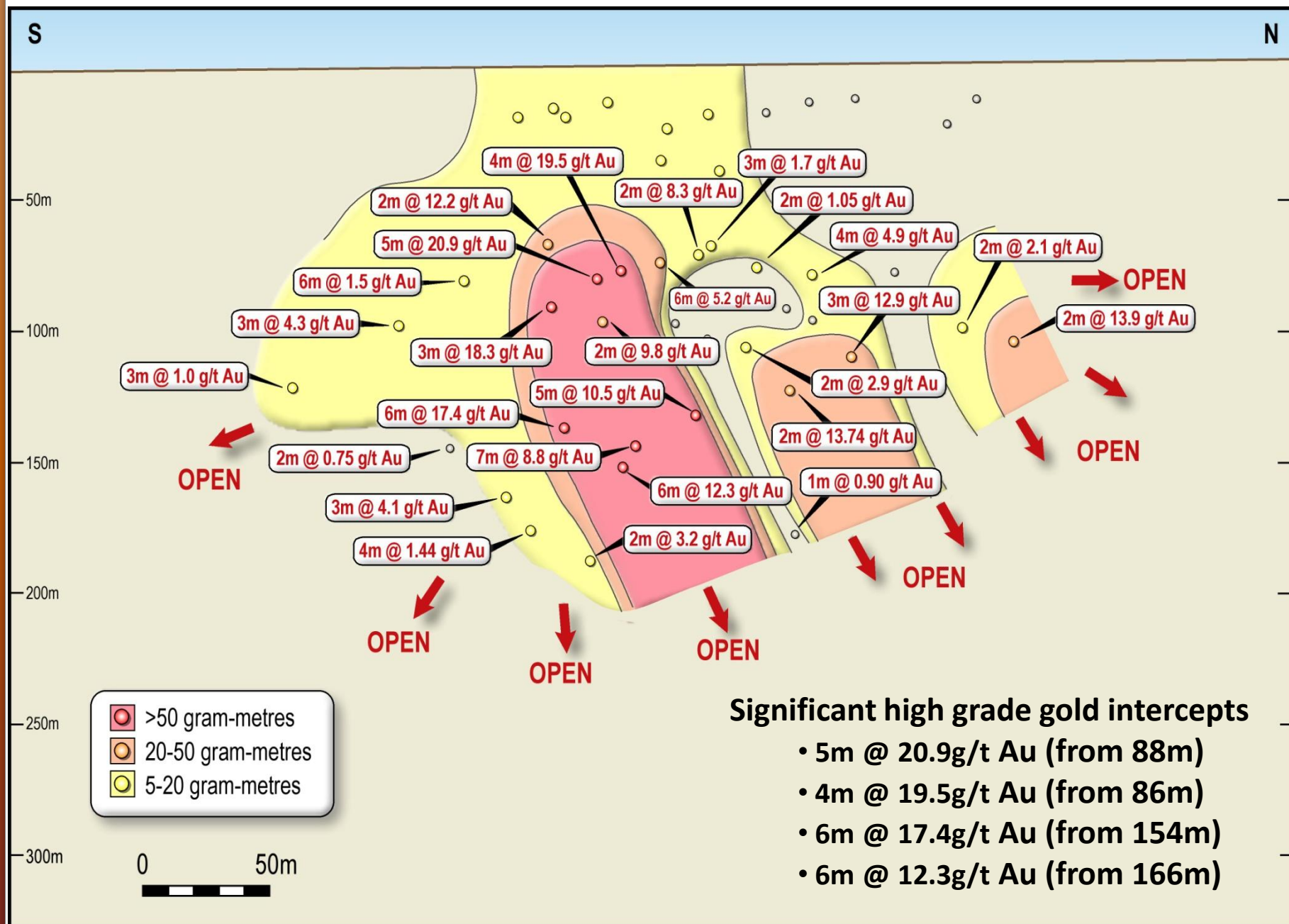
# PINNACLES JV & PINNACLES REGIONAL GOLD PROJECT



- Farm-In & JV with Saracen Minerals
- Nexus earning up to 85%
- Existing JORC 2012 Compliant Resource
- Agreement includes Ore Sale & Purchase clause – to process potential ore at Carosue Dam
- High grade core and steeply dipping ore shoots – open at depth and along strike
- Year 1 exploration drilling to focus on testing depth potential
- Pinnacles JV 8km<sup>2</sup> package surrounded by 94km<sup>2</sup> of Nexus Pinnacles Regional tenements
- Multi million ounce Gold producing district
- Major regional structural corridor with large Archaean intrusion related alteration system

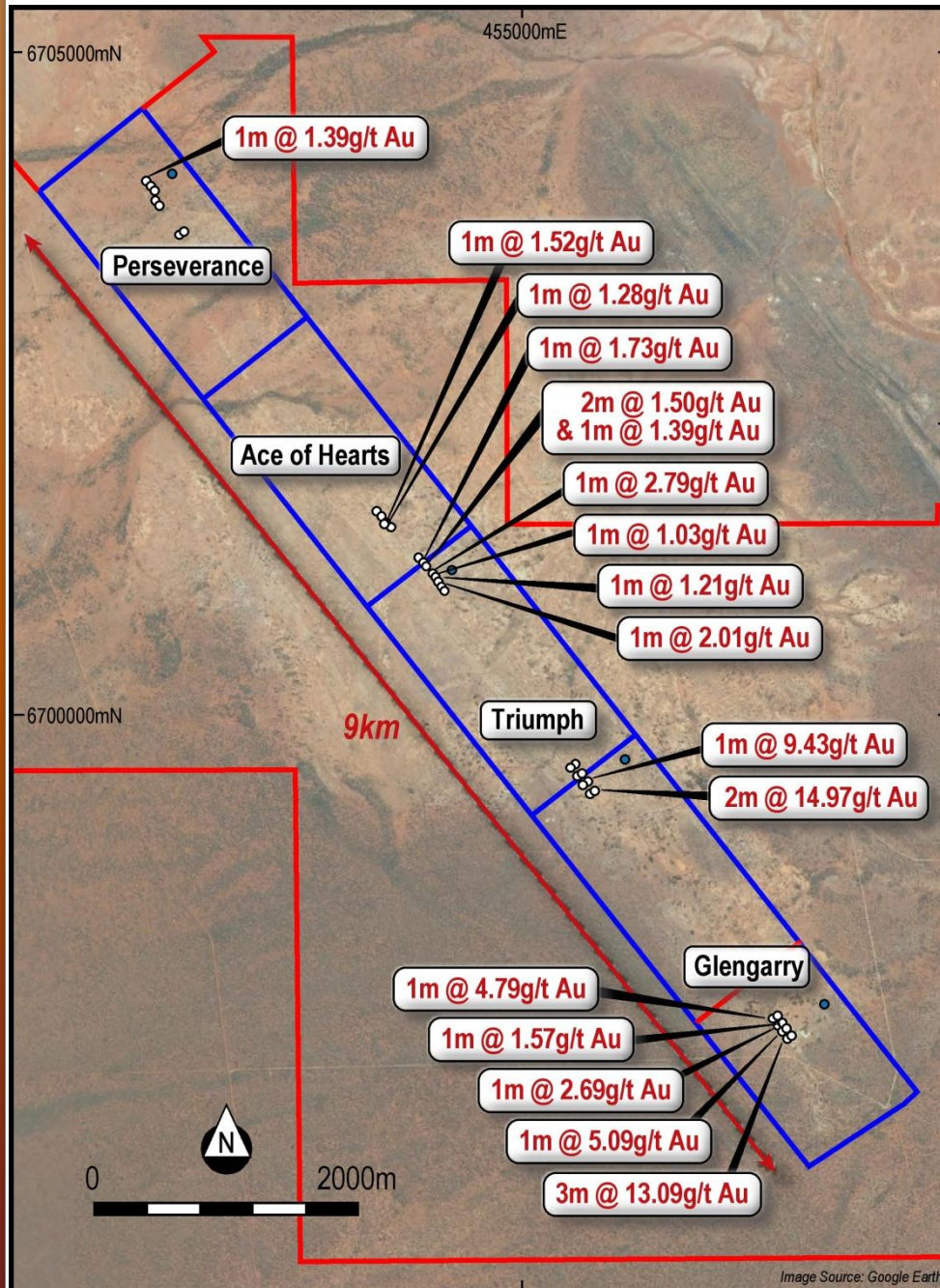


# PINNACLES JV LONG SECTION





# TRIUMPH GOLD PROJECT



- Located 145km North-east of Kalgoorlie.
- Same geological terrain as Granny Smith, Sunrise Dam, Red October & Carosue Dam.
- Significant High Grade historic mining centre 1897 – 1921 for:  
22,000t@46.4g/t Au & 8,000t@24.5g/t Au.
- 72km<sup>2</sup> tenement package incl 24km<sup>2</sup> JV + surrounding 46km<sup>2</sup> Nexus 100%.
- Farm-in & Joint Venture Agreement based on Nexus earning further interest in the project by direct exploration expenditure.
- Geological fact mapping, IP ground geophysical program and initial RC Drill program completed early 2015.
- IP ground geophysical program identified central high strain zone and layered with geology/structural interpretation and ground magnetics assists in understanding of structural controls on the mineralisation.
- Initial 4034m RC drill program tested 4 priority target areas, with high grade mineralisation intersected at 2 of these.



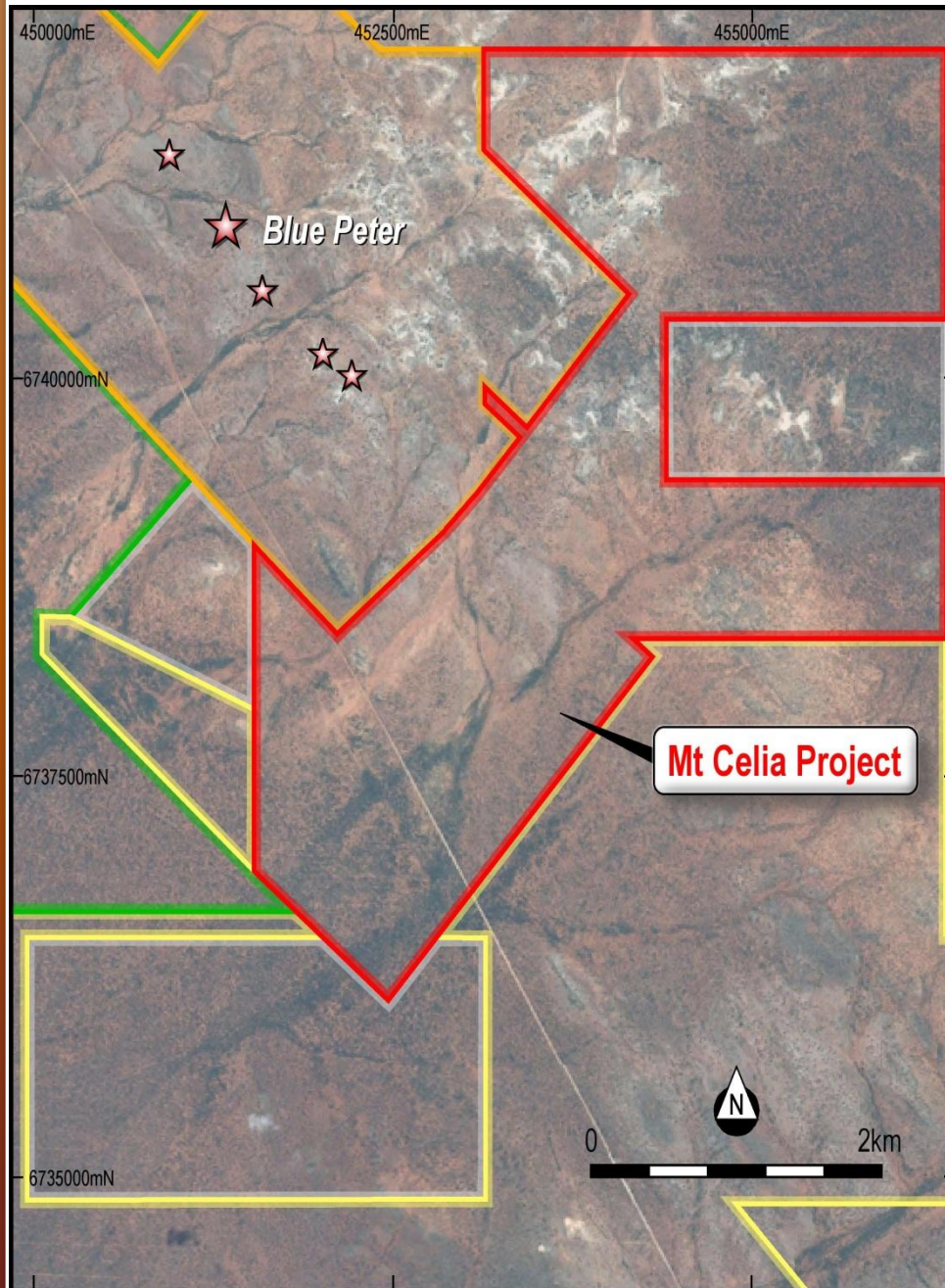
# TRIUMPH GOLD PROJECT

## Summary of High Grade Intersections – RC Drill Program April 2015

Hole ID	GDA_94 East	GDA_94 North	RL	From (m)	To (m)	Length (m)	Grade (g/t)	Prospect
NMTRRC24	455538	6699437	359	115	117	2	14.97	Triumph
			Incl	115	116	1	25.82	Triumph
			Incl	116	117	1	4.13	Triumph
NMTRRC26	455494	6699497	359	101	102	1	9.43	Triumph
NMTRRC32	457010	6697564	359	46	49	3	13.09	Glengarry
			Incl	46	47	1	12.34	Glengarry
			Incl	47	48	1	5.38	Glengarry
			Incl	48	49	1	21.56	Glengarry
NMTRRC34	456969	6697615	359	38	39	1	5.09	Glengarry
NMTRRC36	456937	6697652	360	38	39	1	2.69	Glengarry
NMTRRC37	456958	6697676	359	68	69	1	1.57	Glengarry
NMTRRC38	456891	6697708	360	30	31	1	4.79	Glengarry

- Interpretation and assessment continuing to better understand controls on the high grade mineralisation.
- A second phase IP program is being planned (as part of a current R&D project) to cover the areas of high grade mineralisation and assist in future exploration planning.

# MT CELIA GOLD PROJECT



- 180km north east of Kalgoorlie.
- 5km<sup>2</sup> tenement package granted.
- 6.5km<sup>2</sup> tenement under application.
- Project is immediately south of Legacy Iron's Blue Peter gold project. Current inferred resource 239,232@3.97g/t for 30,554 ounces gold (1g/t cut-off) (see Legacy iron Ore Limited website).
- Tenement lies within the Laverton Tectonic Zone. This structure hosts numerous major gold mines.
- Tenement contains numerous small historic gold workings.
- Mineralisation hosted by quartz filled shears within greenstone lithologies
- Compilation of historic data underway.





- ✓ Ideally positioned to capitalise on emerging growth opportunities
- ✓ Focussed on farm-in / acquisition of scalable resource projects
- ✓ Strong cash position
- ✓ Professional and Experienced Management + Technical team
- ✓ Capable and well credentialed board



Contact:

Andy Tudor, CEO

[atudor@nexus-minerals.com](mailto:atudor@nexus-minerals.com)

Nexus Minerals Limited (ASX:NXM)

ABN: 96 122 074 006

41-47 Colin Street,  
West Perth,  
Western Australia 6005

PO Box 2803,  
West Perth WA 6872

T:+61 8 9481 1749

F:+61 8 9481 1756

W: [www.nexus-minerals.com](http://www.nexus-minerals.com)