



ASX:TOR
torquemetals.com

Development-Ready Gold and Lithium in WA Goldfields

Corporate Presentation - May 2024

IMPORTANT

Before continuing, please read the following

This Presentation has been prepared by Torque Metals Limited (ACN 621 122 905) ("Torque" or "the Company") solely for information purposes.

This Presentation, including the information contained in this disclaimer, is not a prospectus and does not constitute an offer to sell, or the solicitation of an offer to buy, nor shall there be any sale of securities in any state or other jurisdiction in which such offer, solicitation or sale would be unlawful under applicable law, including the United States Securities Act of 1933, as amended (**US Securities Act**). Securities have not been registered under the US Securities Act or any US state securities laws and may not be offered or sold in the United States, an absent registration or an applicable exemption from registration under the Securities Act and applicable state securities laws.

The Company has prepared this Presentation based on information available to it at the time of preparation. All exploration results within this presentation have been previously reported, there is no new information or data materially affecting the exploration results. None of the Relevant Persons have independently verified the data contained in this Presentation. The information contained in this Presentation does not purport to be comprehensive. No representation nor warranty is made as to the fairness, accuracy or completeness of the information, opinions and conclusions contained in this Presentation or any other information provided by the Company.

You cannot assume that the information in this Presentation will be updated at any time subsequent to the date of this Presentation. The distribution of this Presentation does not constitute a representation by any Relevant Person that the information will be updated at any time after the date of this Presentation. Except to the extent required by law, no Relevant Person undertakes to advise any person of any information coming to their attention relating to the financial condition, status or affairs of the Company.

To the maximum extent permitted by law, the Relevant Persons are not liable for any direct, in director consequential loss or damage suffered by any person as a result of relying on this Presentation or otherwise in connection with it.

Statements of past performance: This Presentation includes information regarding the past performance of the Company. Investors should be aware that past performance is not indicative of future performance. Statements of numbers and financial performance: All financial amounts contained in this Presentation are expressed in Australian currency, unless otherwise stated. Any discrepancies between totals and sums of components in tables contained in this Presentation are due to rounding.

Reporting of mineral resources and reserves: This Presentation includes mineral resource information prepared by "competent persons" in accordance with the Australasian Code for Reporting of Exploration Results, Mineral Resources and Ore Reserves (**JORC Code**). Where used in this Presentation, the terms "resource", "reserve", "proven reserves", "probable reserves", "inferred resources", "indicated resources" and "measured resources" have the meanings given to them in the JORC Code.

Forward-looking statements: This Presentation contains forward-looking statements concerning the Company's business, operations, financial performance and condition as well as the Company's plans, objectives and expectations for its business, operations, financial performance and condition. Any statements contained in this Presentation that are not of historical facts may be deemed to be forward-looking statements. You can identify these statements by words such as "aim", "anticipate", "assume", "believe", "could", "due", "estimate", "expect", "goal", "intend", "may", "objective", "plan", "predict", "potential", "positioned", "should", "target", "will", "would" and other similar expressions that are predictions of or indicate future events and future trends. These forward-looking statements are based on current expectations, estimates, forecasts and projections about the Company's business and the industry in which the Company operates and management's beliefs and assumptions. These forward-looking statements are not guarantees of future performance or development and involve known and unknown risks, uncertainties and other factors, many of which are beyond the Company's control. As a result, any or all of the forward-looking statements in this Presentation may turn out to be inaccurate. Factors that may cause such differences or make such statements inaccurate include, but are not limited to, the risk factors described in this Presentation. Readers of this Presentation are urged to consider these factors carefully in evaluating the forward-looking statements set out in this Presentation and are cautioned not to place undue reliance on such forward-looking statements. Unless required by law, the Company does not intend to publicly update or revise any forward-looking statements to reflect new information or future events or otherwise. These forward-looking statements speak only as at the date of this presentation. Save as required by applicable law or regulation the company expressly disclaims any obligation or undertaking to disseminate any updates or revisions to any forward-looking statements contained herein to reflect any change in the company's expectations with regard thereto or any change in events, conditions or circumstances on which such statements are based. As a result of these factors, the events described in the forward-looking statements in this presentation may not occur. Nothing in this Presentation constitutes the provision of financial or legal advice.

Strong Fundamentals and Experienced Team

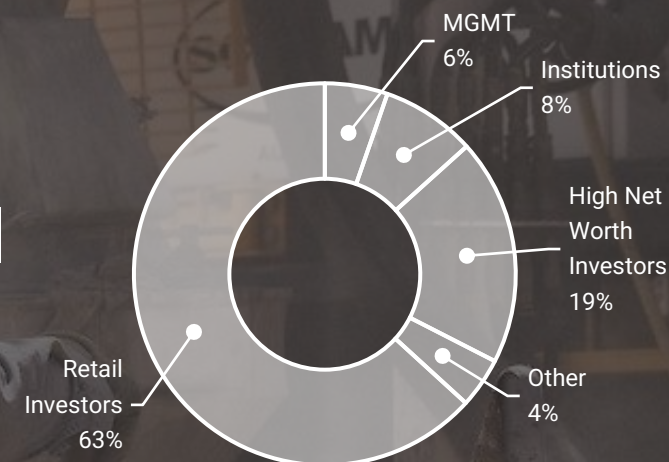


CAPITAL STRUCTURE



Ordinary Shares on Issue: 183.3m

TOR SHAREHOLDERS



BOARD OF DIRECTORS



Cristian Moreno
Managing Director

Extensive resources and energy sector experience internationally and in Australia. Qualified Geophysicist, Geologist, Engineer, Data Scientist, and MBA in Finance candidate at UWA.



Andrew Woskett
Non-Executive Chairman

Senior Executive experienced in bringing assets into development. ASX MD of DRM and MEP successfully taken over. Fellow of the Australasian Institute of Mining and Metallurgy, Qualified Engineer and Master of Commercial Law.



Tony Lofthouse
Non-Executive Director

Experienced Executive in multiple roles across the resources sector, including Geologist, Resources Equity Analyst, Corporate Banker and ASX-listed CEO.



Imants Kins
Non-Executive Director

Respected executive on ASX-listed and unlisted companies (including Atlas Iron - a **Hancock** Prospecting Group company), and not-for-profit organisations. Formerly MD of Tantalum Australia, previous holder of the New Dawn Lithium Project.

Strong Technical Team

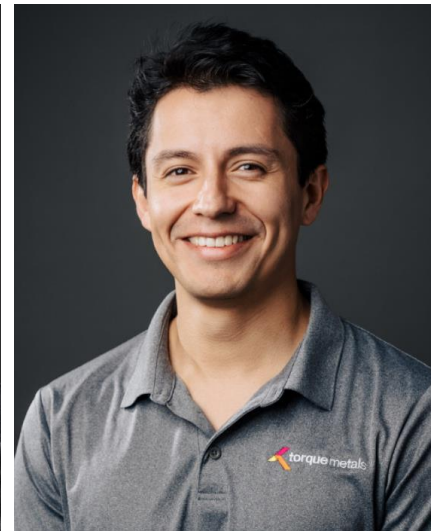
Technical Expertise

- Each team member possesses strong technical skills relevant to their role.
- They stay updated with the latest advancements in their field.



Leadership and Mentorship

- Strong leadership skills within the team, including the ability to inspire and motivate.
- Willingness to mentor junior team members and help them grow.



New Dawn Lithium Project

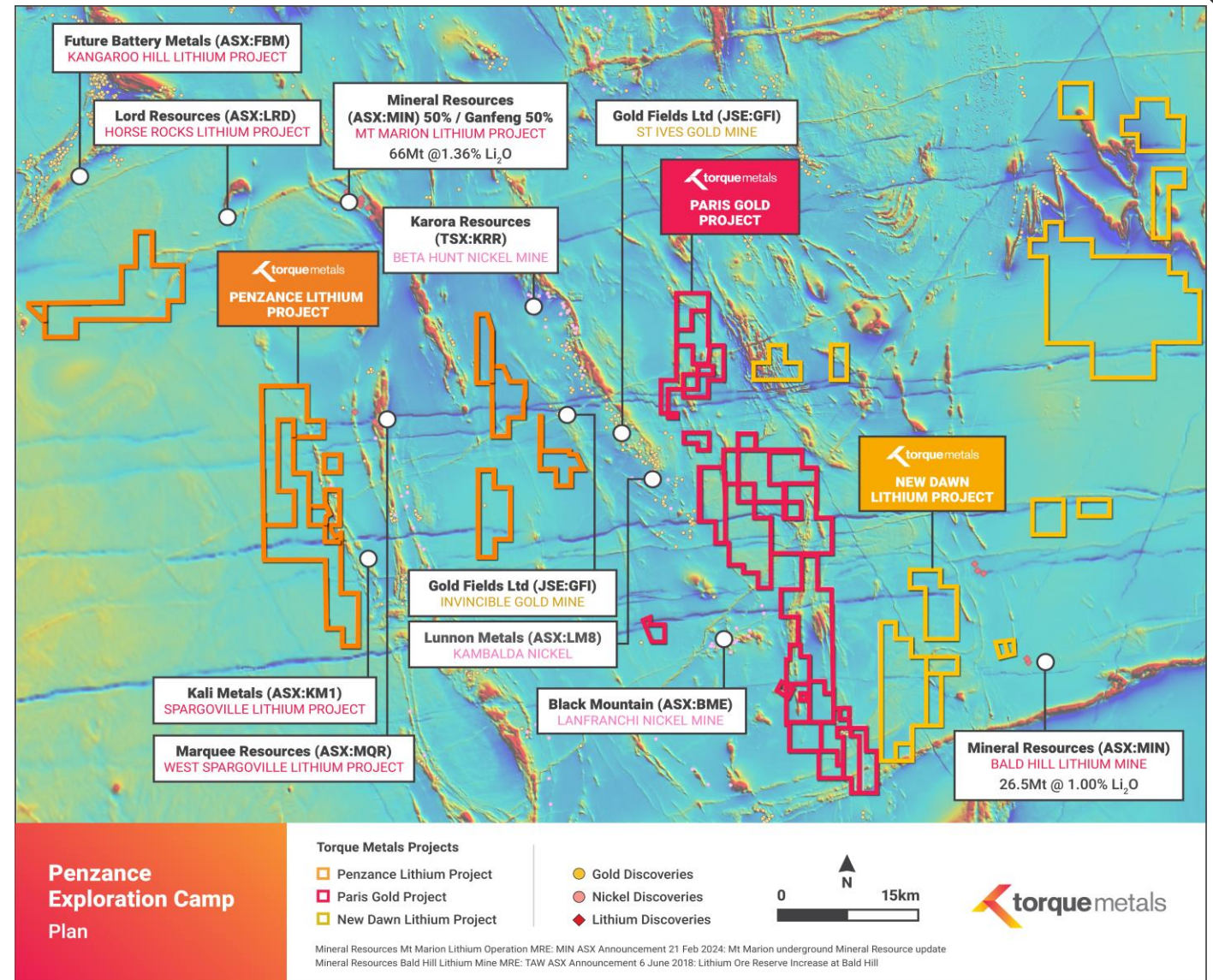
- 600m to the west and abutting the operating Bald Hill Mine (**MRE: 26.5Mt @ 1.00% Li₂O**)

Paris Gold Project

- Adjacent to Gold Fields Ltd (JSE:GFI) St Ives Gold tenements

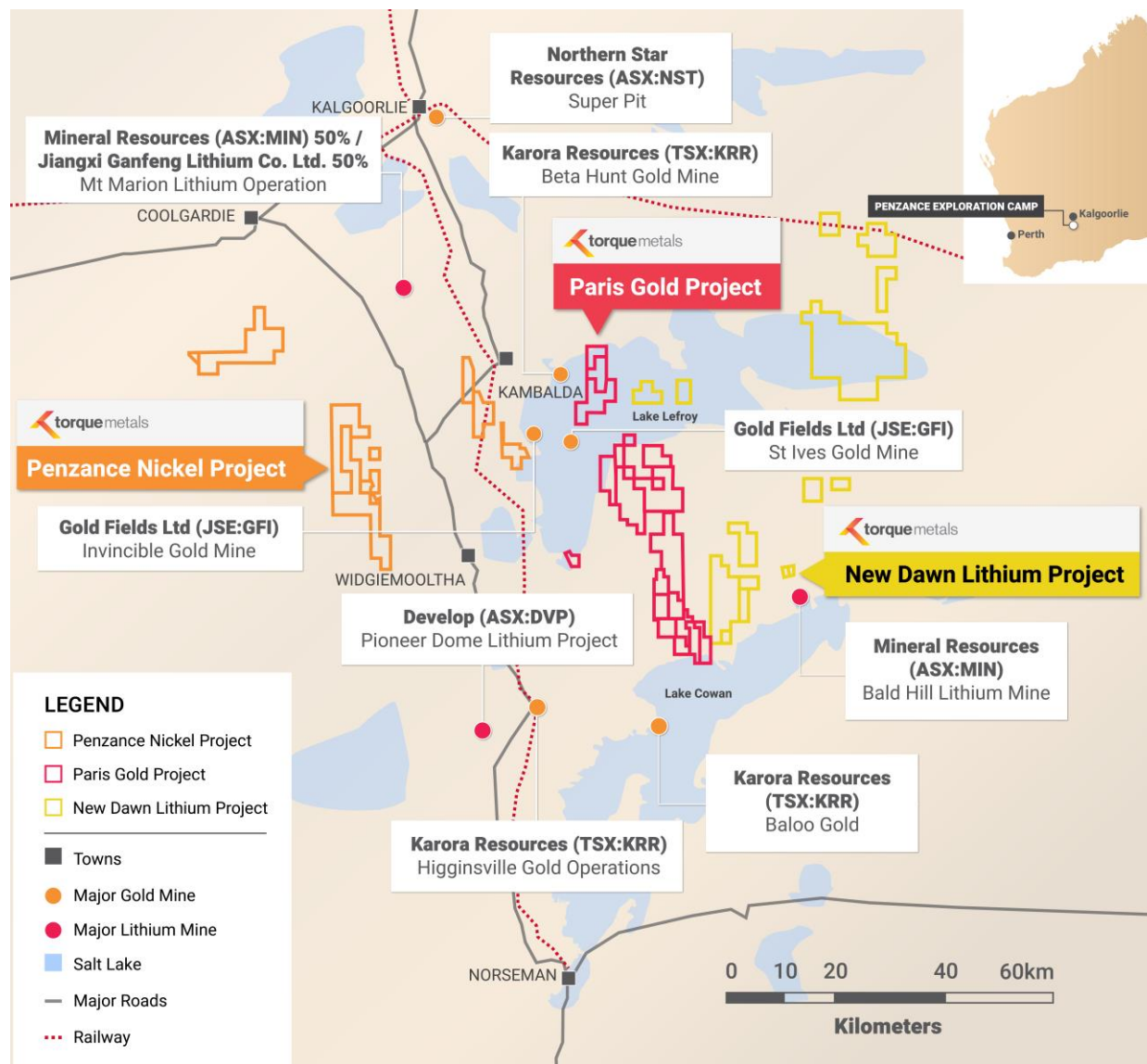
Penzance Nickel Project

- World-class Kambalda Nickel province



Option to Acquire Gold and Lithium Tenements in WA: ASX announcement 15 May 2024
 New Dawn Drilling Results: ASX Announcement 7 Dec 2023: Assays Confirm High Grade Lithium at New Dawn
 Mineral Resources Mt Marion Lithium Operation: MIN ASX Announcement 22/09/2023: Mineral Resources and Ore Reserve Update
 Develop Dome North Deposit MRE: ESS ASX Announcement 22/12/2022: Dome North Mineral Resource Estimate Upgrade
 Mineral Resources Bald Hill Lithium Mine: TAW ASX Announcement 6 June: Lithium Ore Reserve Increase at Bald Hill

Prime Location in Premier Mineral Fields of Western Australia



Significant landholding

~1200km² of tenure in WA Goldfields



Development-Ready

13

Mining
Licences

4

Prospecting
Licences

38

Exploration
Licences



Proximate to Infrastructure

Processing Plants at Bald Hill,
Higginsville, Lanfranchi and St Ives

Option to Acquire Gold and Lithium Tenements in WA: ASX announcement 15 May 2024



Paris Gold Project



Exceptional metallurgical testwork results for conventional cyanide leaching. **Gravity concentration 40%** of gold recovered

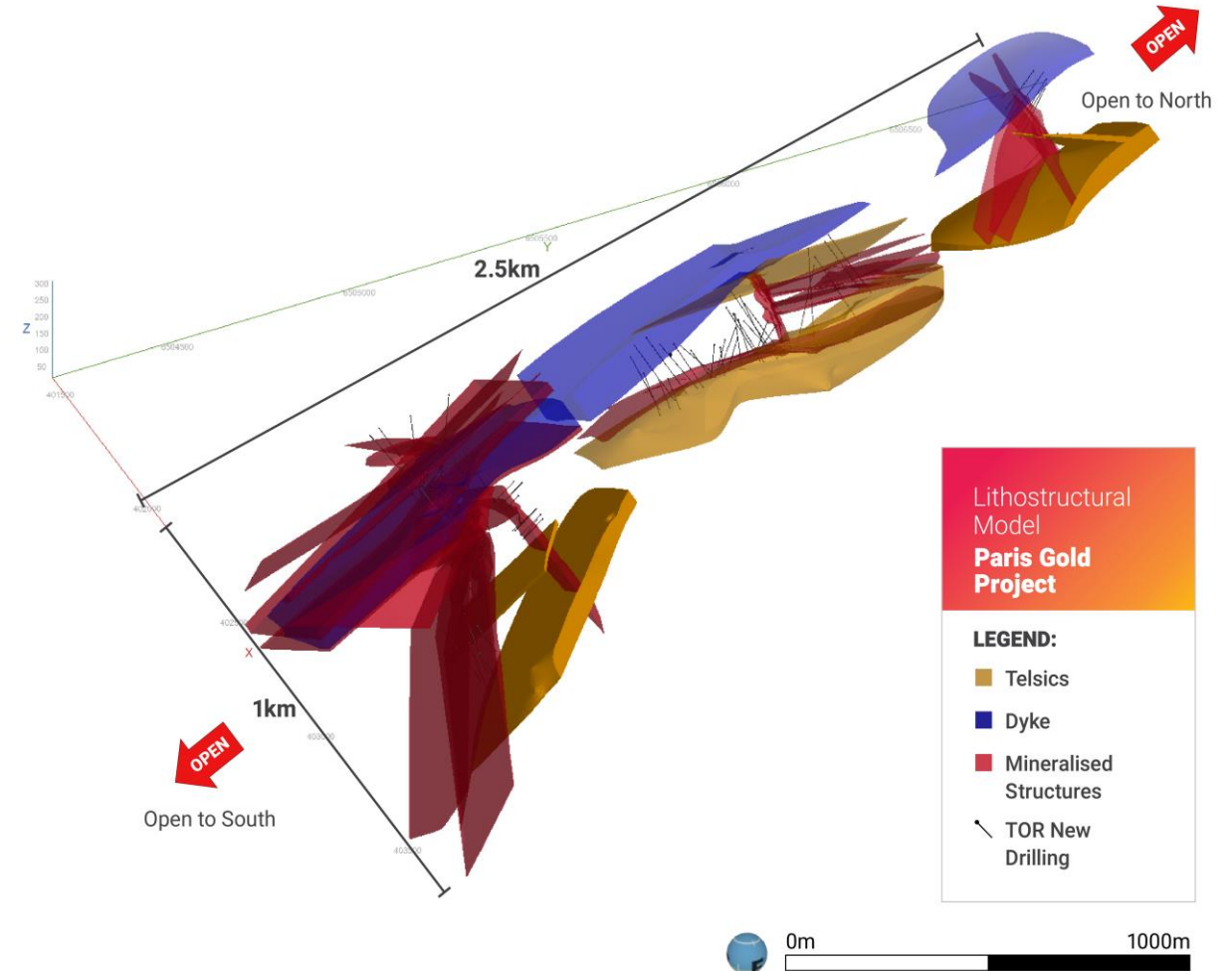
- Paris Prospect composite gold recovery of **96.79%**
- Observation Prospect composite gold recovery of **99.7%**

Vindicates Paris as a first-class emerging gold project

Refer to ASX announcement 27 September 2023. Exceptional Gold Recoveries in Paris Project
Refer to ASX announcement 17 May 2024. Drilling Completed at Paris Gold Project

2.5km Open Gold Zone at Paris

- Over 10,000m of DD and RC drilling completed
- Bonanza gold interval of **35m @ 14.12 g/t** gold from 157.85m including **1.2m @ 185 g/t** gold from 174.7m
- Strong grades lateral and on strike of historic pits illustrate potential of the underexplored area, potentially hosting an **extensive 2.5km gold camp**
- Paris Gold Project high-grade zone is open to the Northwest, Southeast and at depth



Refer to ASX announcement 5 July 2023. Paris Delivers 185g/t Bonanza Gold Interval
Refer to ASX announcement 17 May 2024. Drilling Completed at Paris Gold Project

Great Results at Paris Gold Project

23PRCDD076

35m @ 14.12 g/t Au from 157.85m including

1.2m @ **185 g/t Au** from 174.7m

4.44m @ 20.82 g/t Au from 170.3m

2.49m @ 40.6 g/t Au from 167.8m

Refer to ASX announcement 4 April 2024. Paris Gold Project Drill Campaign Commences

A vertical bar with a red-to-orange gradient, positioned to the left of the section header.

Great Results at Paris Gold Project

23PRCDD077

14.76m @ 7.6 g/t Au from 168.13m including
1.04m @ **83.59 g/t Au** from 181.34m

Refer to ASX announcement 4 April 2024. Paris Gold Project Drill Campaign Commences

A vertical bar with a red-to-orange gradient, positioned to the left of the section header.

Great Results at Paris Gold Project

23PRCDD053

39m @ 6.05 g/t Au from 175m including

9m @ 10.66 g/t Au from 178m

3m @ 29.4 g/t Au from 202m

Refer to ASX announcement 4 April 2024. Paris Gold Project Drill Campaign Commences

A vertical bar with a red-to-orange gradient, positioned to the left of the section header.

Great Results at Paris Gold Project

23PRCDD038

27m @ 8.16 g/t Au from 156m including
6m @ 22.0 g/t Au from 159m

Refer to ASX announcement 4 April 2024. Paris Gold Project Drill Campaign Commences

A vertical bar with a red-to-orange gradient, positioned to the left of the section header.

Great Results at Paris Gold Project

23PRCDD025

24m @ 10.7 g/t Au from 141m including
6m @ 34.6 g/t Au from 141m

Refer to ASX announcement 4 April 2024. Paris Gold Project Drill Campaign Commences

A vertical bar with a red-to-orange gradient, positioned to the left of the section header.

Great Results at Paris Gold Project

23PRCDD040

27m @ 10.7 g/t Au from 177m including

6m @ 32.45 g/t Au from 183m

12m @ 19.7 g/t Au from 177m

Refer to ASX announcement 4 April 2024. Paris Gold Project Drill Campaign Commences

Great Results at Paris Gold Project

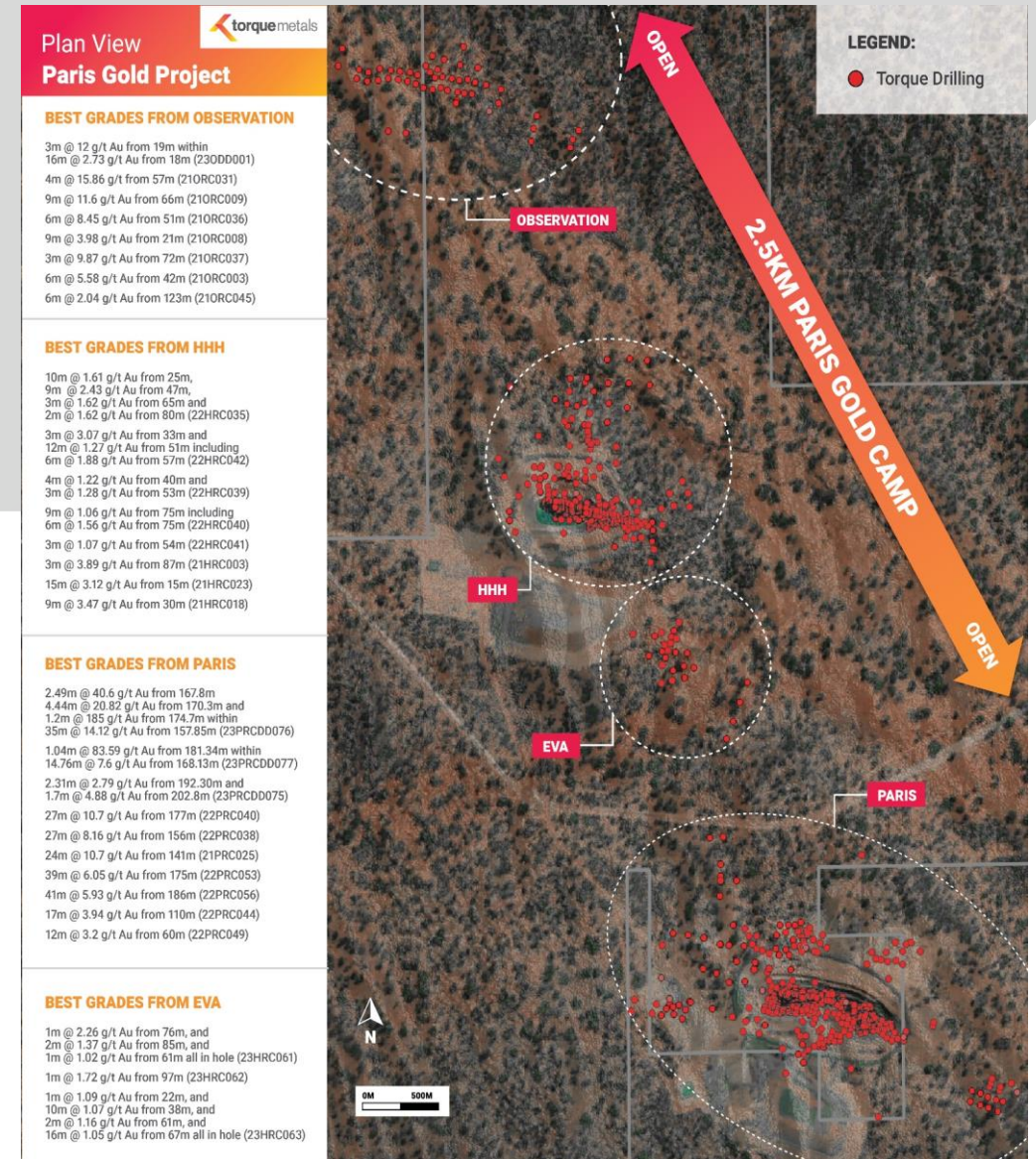
23PRCDD056

41m @ 5.93 g/t Au from 188m

3m @ 59.35 g/t Au from 204m

2m @ 25.54 g/t Au from 189m

Refer to ASX announcement 4 April 2024. Paris Gold Project Drill Campaign Commences





Extensive and prospective land area

Hosting extensive prospective tenement holdings



Strategic Location

In heart of the WA Goldfields, well-placed to facilitate pathway to production



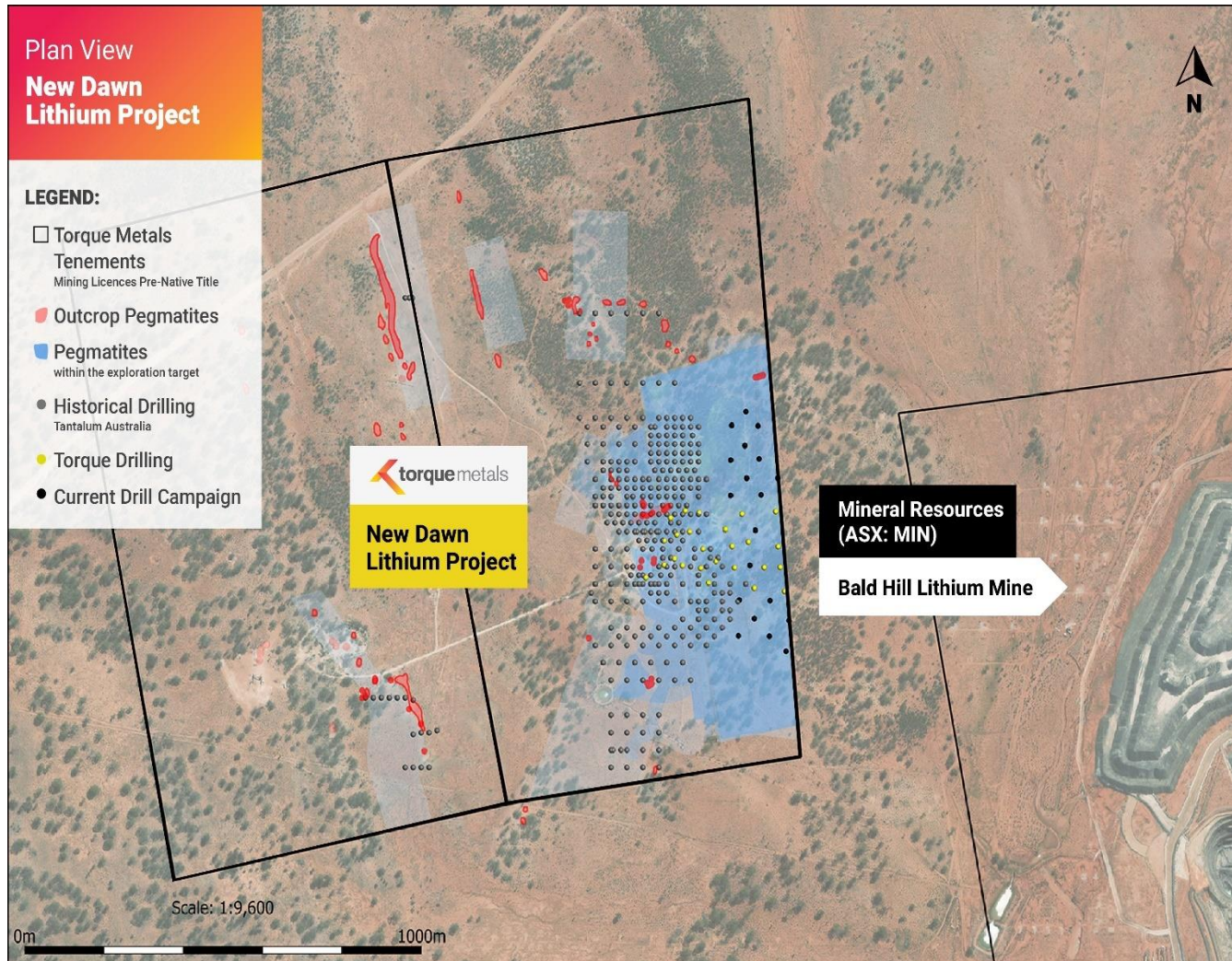
Metallurgical Testwork

Exceptional gold recovery results >95%



New Dawn Lithium Project

Adjacent to Existing Lithium Mining Operation

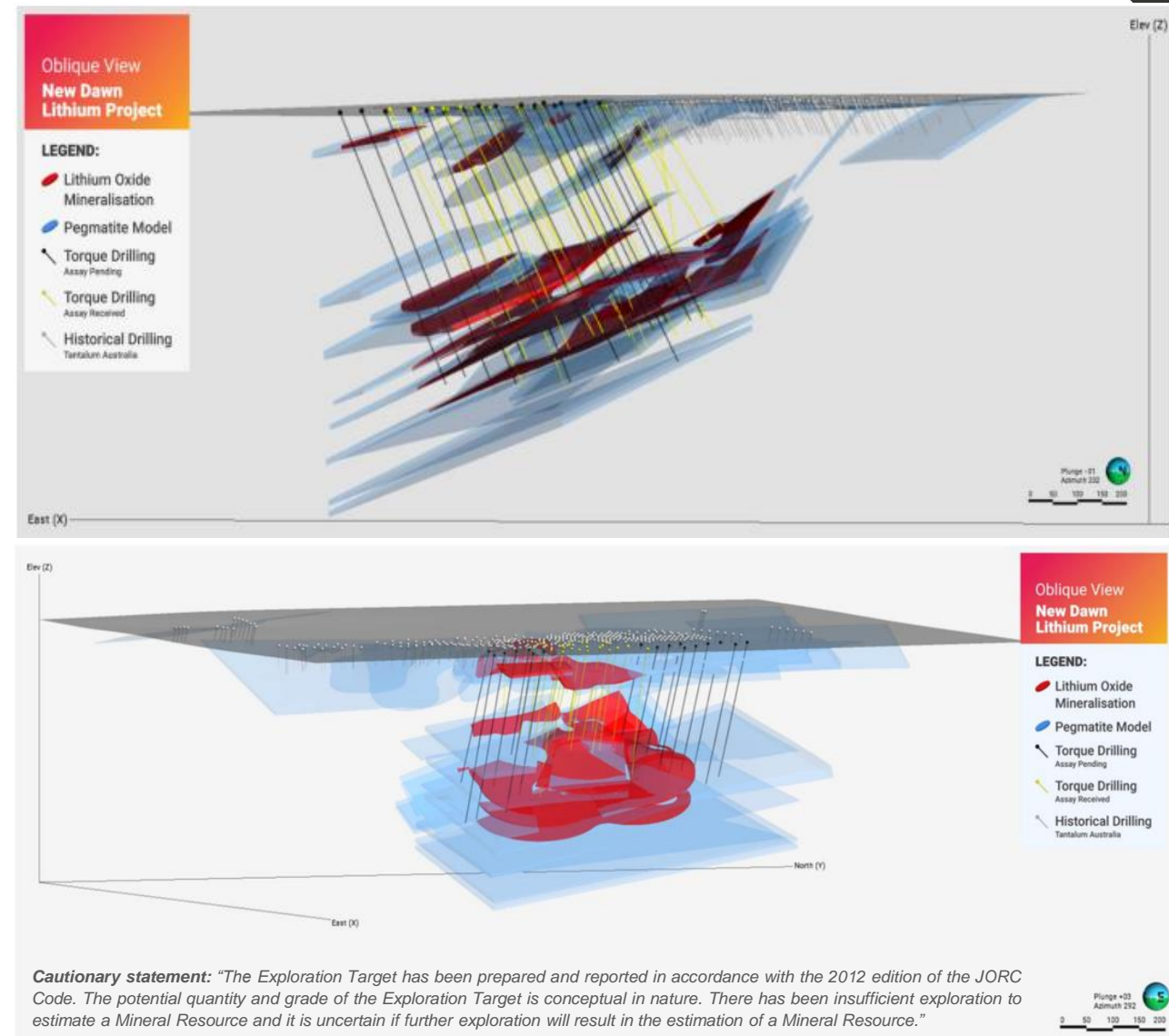


- Bald Hill Mine capable of producing concentrate of high lithium (+6% Li_2O), low iron (<0.5% Fe) and low mica (<0.5%) and significant tantalum by-product.
- Bald Hill total lithium MRE of **26.5Mt** at **1.0% Li_2O** , 149ppm Ta_2O_5
- Additional tantalum MRE of 4.4Mt at 336ppm Ta_2O_5 .

Refer to ASX announcement 5 Sept 2023. Option to Acquire Known Lithium and Gold Exposure in WA Mineral Resources Bald Hill MRE: TAW ASX Announcement 6 June 2018: Lithium Ore Reserve Increase at Bald Hill

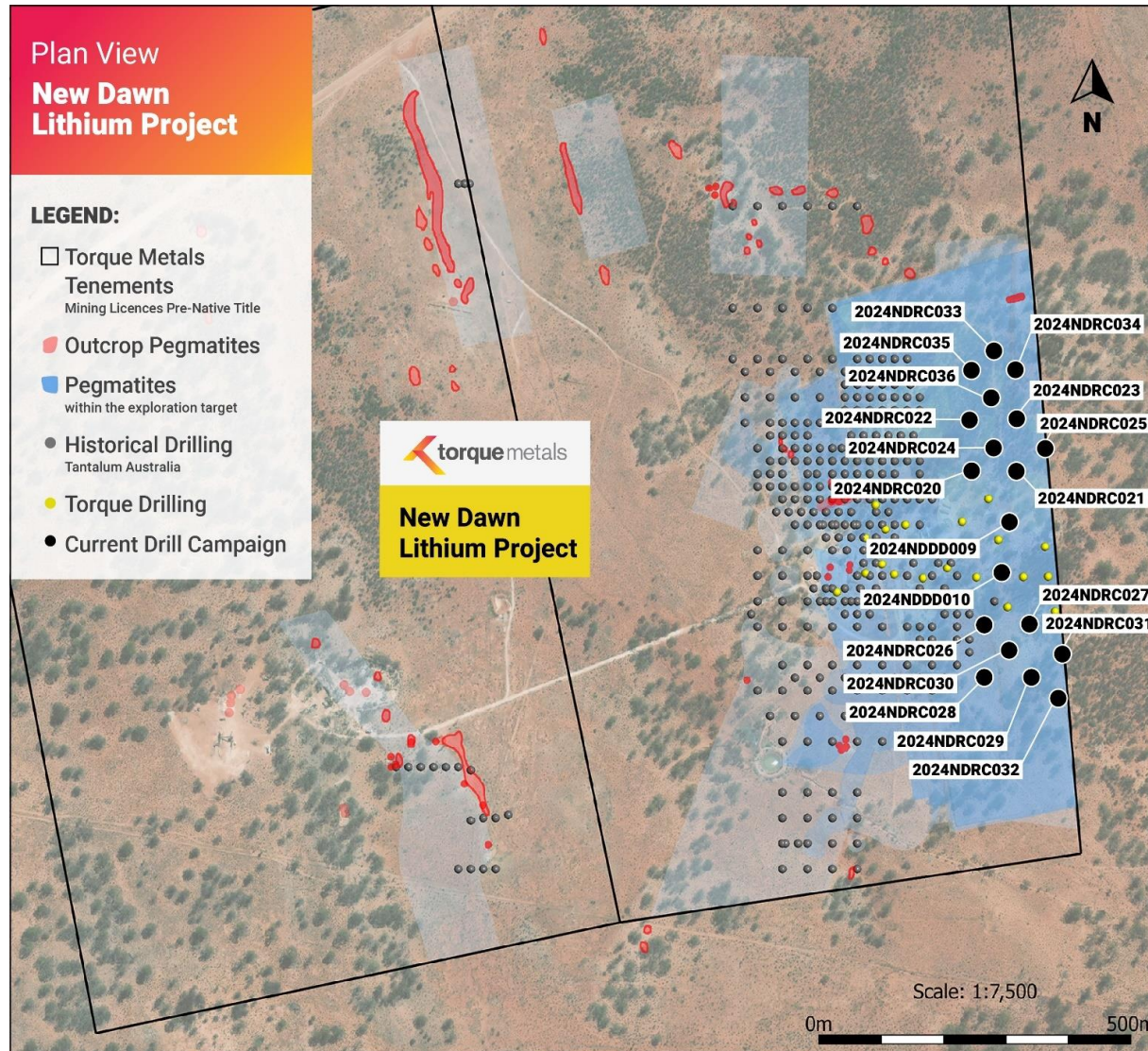
8–14 Mt @ 1.0–1.2% Li₂O

- Highlights potential for continued lithium mineralisation along New Dawn trend
- Guides Torque towards an initial Mineral Resource Estimate
- **Encompasses only 40% of two development-ready mining licences**, with obvious scope for mineral inventory expansion
- 8,000m of RC drilling completed and 1,000m of diamond drilling aimed at extending vertically stacked pegmatites open in all directions



Refer to ASX announcement 8 Feb 2024. Exploration Target for New Dawn Lithium Project

High-Grades Returned from Drilling at New Dawn



19 RC and 2 DD intersected high-grade lithium lodes, with **peak grade of 4.42% Li₂O**

35m (cumulative) lithium mineralised pegmatites intersected in one hole

Significant intercepts included:

- 10m @ 1.51% Li₂O, including 1m @ 3.99% Li₂O
- 10m @ 1.15% Li₂O, including 5m @ 2.15 % Li₂O
- 12m @ 1.00% Li₂O, including 2m @ 2.04% Li₂O
- 8m @ 1.09% Li₂O, including 1m @ 3.66% Li₂O
- 7m @ 1.01% Li₂O, including 3m @ 1.91% Li₂O

Refer to ASX announcement 7 December 2023 and 14 March 2024. Assays Confirm High Grade Lithium at New Dawn, High-Grade Lithium Hits at New Dawn

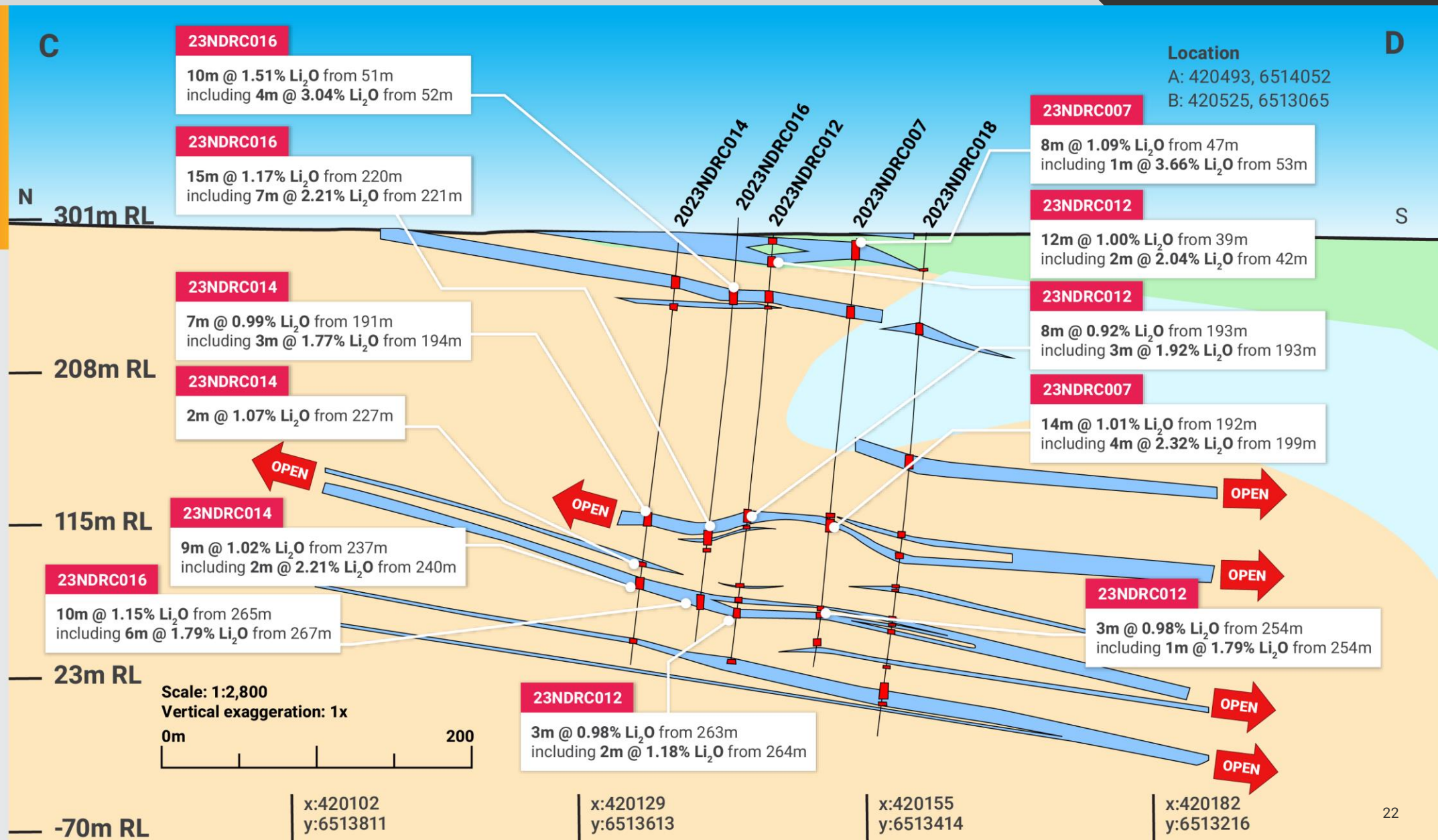
Assays Confirm High-Grade Lithium Spodumene

New Dawn Lithium Project Cross Section

LEGEND

- Interpreted Pegmatites
- Pegmatite Intercepts
- Granitoid
- Metasediments
- Mafics

Refer to ASX announcement 7 December 2023. Assays Confirm High Grade Lithium at New Dawn



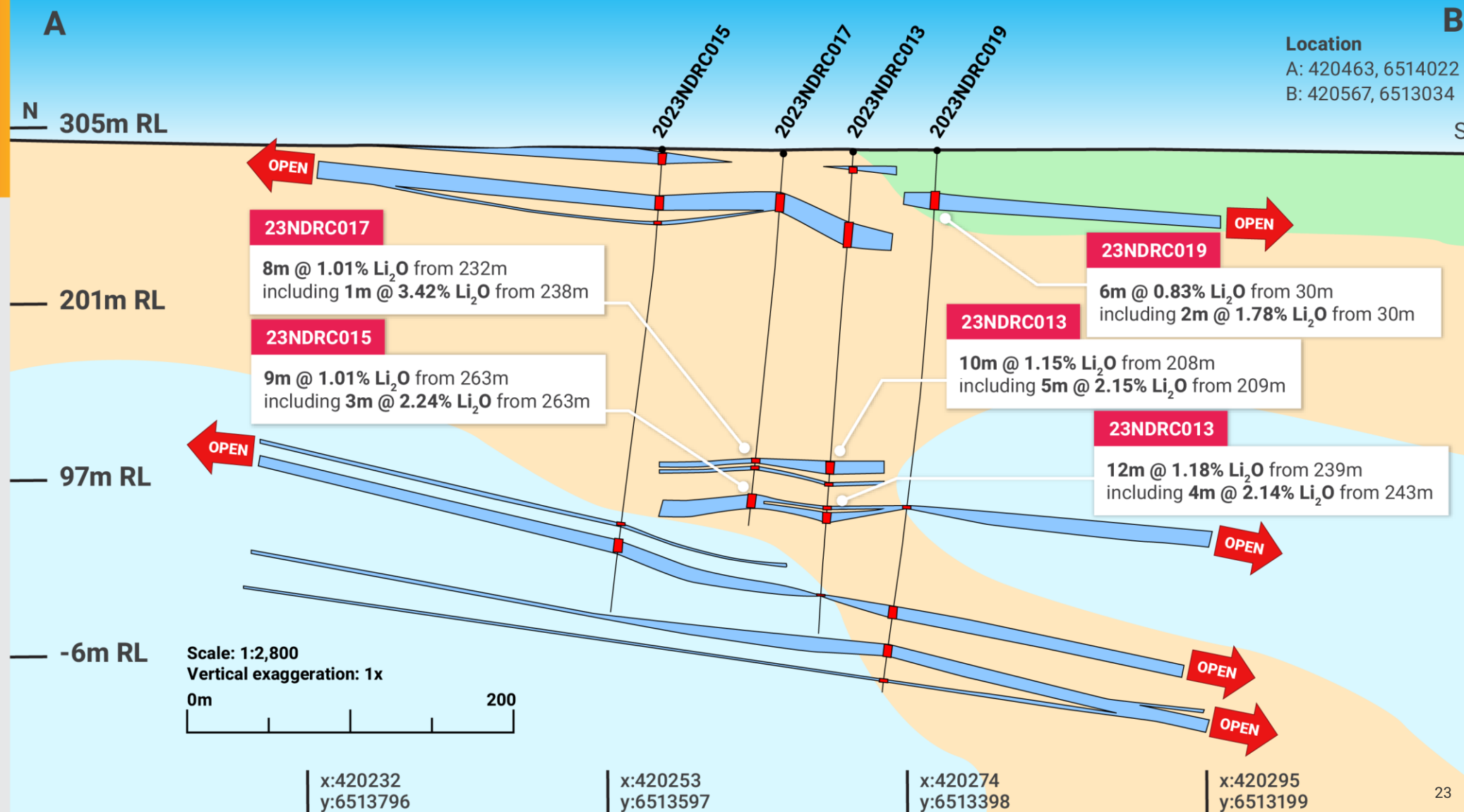
Assays Confirm High-Grade Lithium Spodumene

New Dawn Lithium Project Cross Section

LEGEND

- Interpreted Pegmatites
- Pegmatite Intercepts
- Granitoid
- Metasediments
- Mafics

Refer to ASX announcement 7
December 2023. Assays Confirm
High Grade Lithium at New Dawn



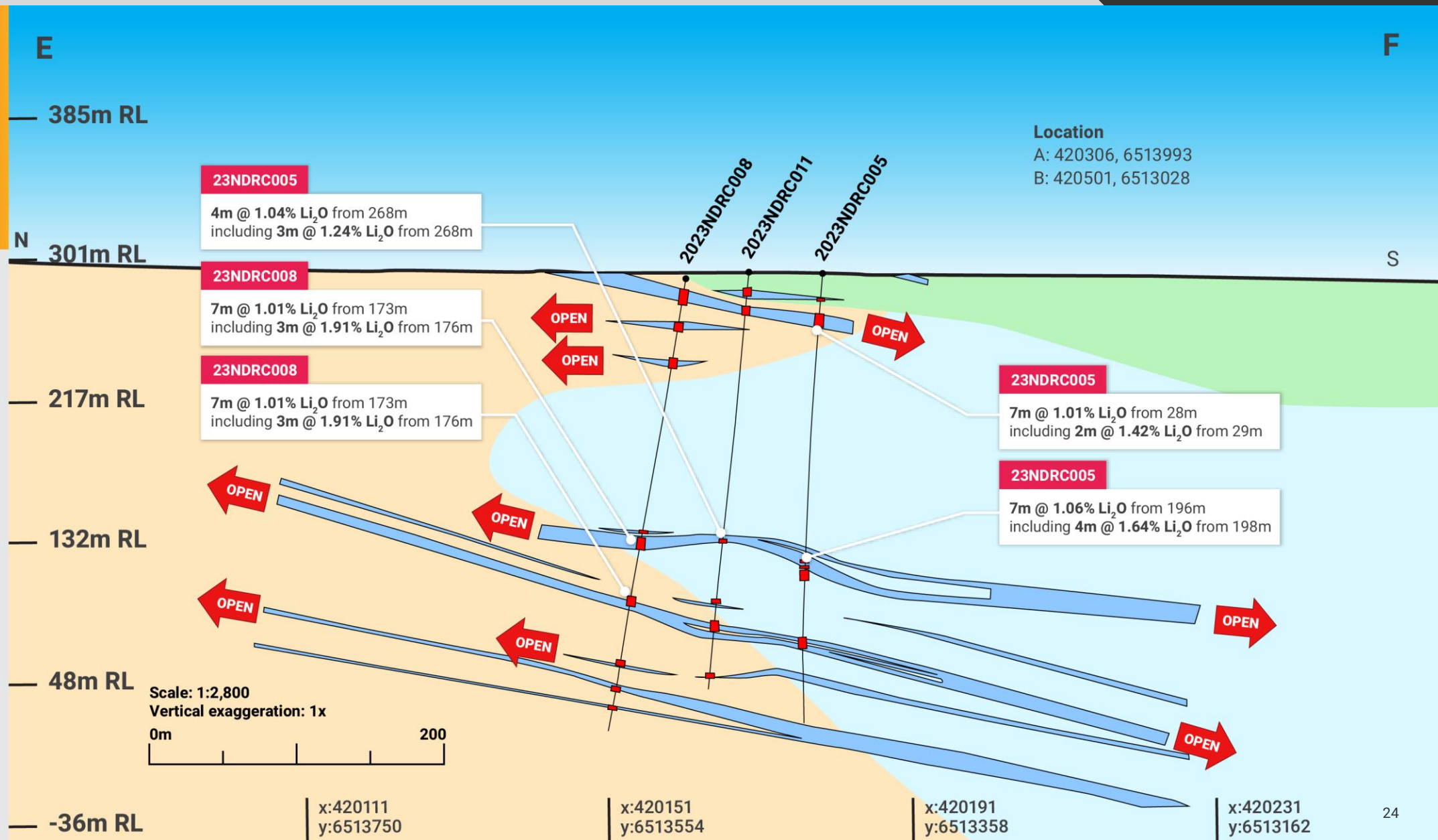
Assays Confirm High-Grade Lithium Spodumene

New Dawn Lithium Project Cross Section

LEGEND

- Interpreted Pegmatites
- Pegmatite Intercepts
- Granitoid
- Metasediments
- Mafics

Refer to ASX announcement 7 December 2023. Assays Confirm High Grade Lithium at New Dawn





Development-Ready

Occupies two pre-Native Title, granted mining licences & 9 exploration licences



Nearby Infrastructure

Abuts operating Bald Hill Lithium Mine



Strong geological similarities with Bald Hill Deposit

with spodumene-rich pegmatites prominent

Historic drilling for Tantalum limited to 30m depth

NEVER SYSTEMATICALLY ASSAYED FOR LITHIUM

¹ Refer to ASX announcement 5 September 2023. Option to Acquire Known Lithium and Gold Exposure in WA

² Mineral Resources Bulletin 22. Tantalum in Western Australia by J.M. Fetherston. Perth 2024

A vertical bar with a red-to-orange gradient, positioned to the left of the title.

Upcoming News



- About 10,000m RC and DD assay results
- Maiden MRE Paris Gold Project
- Exploration Target Paris Gold Project
- Paris Gold Project new drill campaign
- Continue to advance strategic New Dawn Lithium Project with potential resource drilling, maiden MRE and strategic partnership discussions

Invest in a dynamic, well funded explorer



Capital Structure and Experienced Board

Decades of experience in exploration and driving value for shareholders



Located in WA's Premier Mineral Fields

12 Pre-Native Title development ready Mining Licences across tenure Several process plants proximate to the project areas



Dominant Regional Position, Penzance Camp

Exploring tested Lithium and Gold tenures, potentially uncovering significant mineralisation structures



Exploration Efficiency and Innovation

Efficient proven discovery methodology combining drilling results with machine learning algorithms & geological interpretation



ASX:TOR
torquemetals.com

Contact Us

A Suite 8, 16 Nicholson Road, Subiaco, WA 6008

E admin@torquemetals.com

M +61 (0) 410 280 809