

SILVER CITY MINERALS LIMITED

ABN 68 130 933 309



ASX Code: SCI

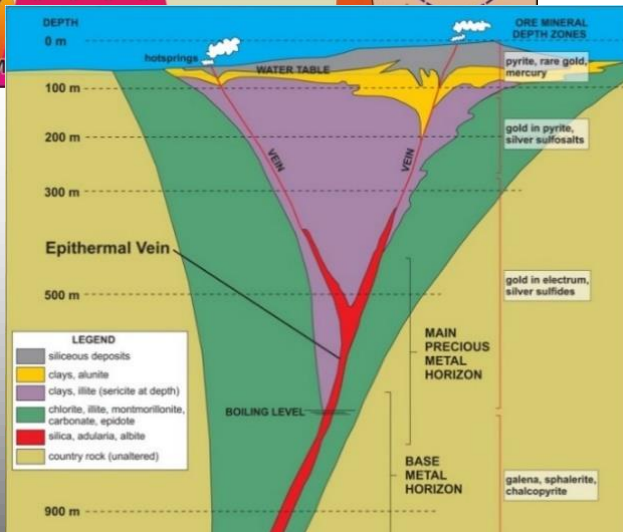
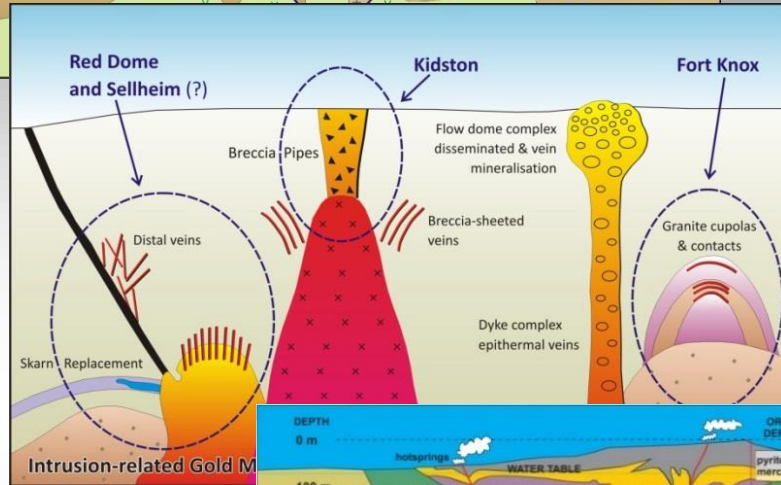
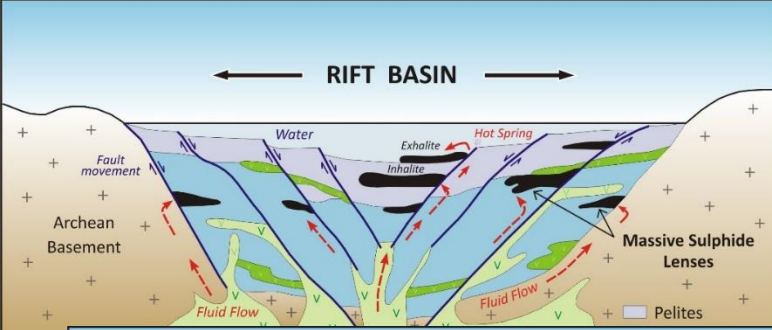
AMEC CONVENTION JULY 2014

Important Disclaimer

This material contains certain forecasts and forward-looking information, including information about possible or assumed future performance, exploration results, resources or potential growth of Silver City Minerals Limited (SCI), industry growth or other trend projections. Such forecasts and information are not a guarantee of future performance and involve unknown risks and uncertainties, as well as other factors, many of which are beyond the control of Silver City Minerals Limited. Actual results and developments may differ materially from those expressed or implied by these forward-looking statements, depending on a variety of factors. Nothing in this material should be construed as the solicitation of an offer to buy or sell SCI securities. Information in this presentation has previously been reported to the ASX.

Competent Person

Information in this document that relates to Exploration Results, Mineral Resources or Ore Reserves is based on information compiled by Christopher Torrey, who is the Managing Director and full-time employee and shareholder of Silver City Minerals Limited, and a Member of the Australian Institute of Geoscientists. Mr Torrey has sufficient experience which is relevant to the style of mineralisation and type of deposit under consideration and to the activity which he is undertaking to qualify as a Competent Person as defined in the 2012 Edition of the “Australasian Code for Reporting of Exploration Results, Mineral Resources and Ore Reserves”. Mr Torrey consents to the inclusion in the report of the matters based on his information in the form and context in which it appears.



ABOUT SILVER CITY

Base and precious metal explorer with focus on world class mining camps

- **Broken Hill, NSW:** massive sulphides (silver, lead, zinc)
- **North Queensland:** intrusion-related (gold, copper)
- **New Zealand:** high grade gold-silver epithermal setting

INVESTMENT IN SILVER CITY



- Strong board and small dedicated team
- Systematic and cost-effective approach to exploration: a focus on drilling
- Large, under-explored tenure position in world class mining camp: **Broken Hill, New South Wales**
- Unique gold project within skarn and quartz veins near **Charters Towers, Queensland: Sellheim**
- New opportunities in **New Zealand**

SILVER CITY MINERALS LIMITED

ASX Code:	SCI
Issued Shares:	116.3 million
Listed Options:	29.2 million
Unlisted Options:	13.2 million
Market Cap:	\$5.0 million
Cash: (end May 2014)	\$4.1 million

Major Shareholders:

The Sentient Group:	17.74%
Variscan Group:	12.47%
Fitel Nominees:	5.99%
Top 20 :	58.27%
Share Price:	High \$0.21 Low \$0.038



DIRECTORS

Bob Besley

Chairman

Geologist with over 40 years experience in mining and exploration. Founder and original Managing Director of CBH Resources Limited. Bob took that company from inception as a junior explorer to a large zinc, lead and silver producer with a peak market cap of \$600m. Currently Non-Exec Director KBL Mining Limited.

Chris Torrey

Managing Director

Geologist with over 30 years experience in international mineral exploration. Senior management and consulting roles with Cyprus-Amax , ASX-listed Golden Cross Resources Ltd, US-listed Golden Minerals and predecessor Apex Silver. Played significant role in geological assessments of the Apex silver projects in Latin America especially the 60M oz El Quevar Silver Deposit in Argentina. Was charged with Business Development role in Australia. Past Chairman of Golden Cross Resources.

Ian Plimer

Non-Executive Director

Ian Plimer is inaugural Professor of Mining Geology (University of Adelaide) and Emeritus Professor of Earth Sciences at The University of Melbourne. Ian is considered to be the world expert on the geology of the Broken Hill orebody on which he has worked and published extensively since 1968. He was Director of CBH Resources Ltd (1998 -2010), was a Director of Ivanhoe Australia Ltd (ASX:IVA, TSX), Non-Exec Director of Ormil Energy Ltd (ASX:OMX) and Kefi Minerals (KEFI:L).

Greg Jones

Non-Executive Director

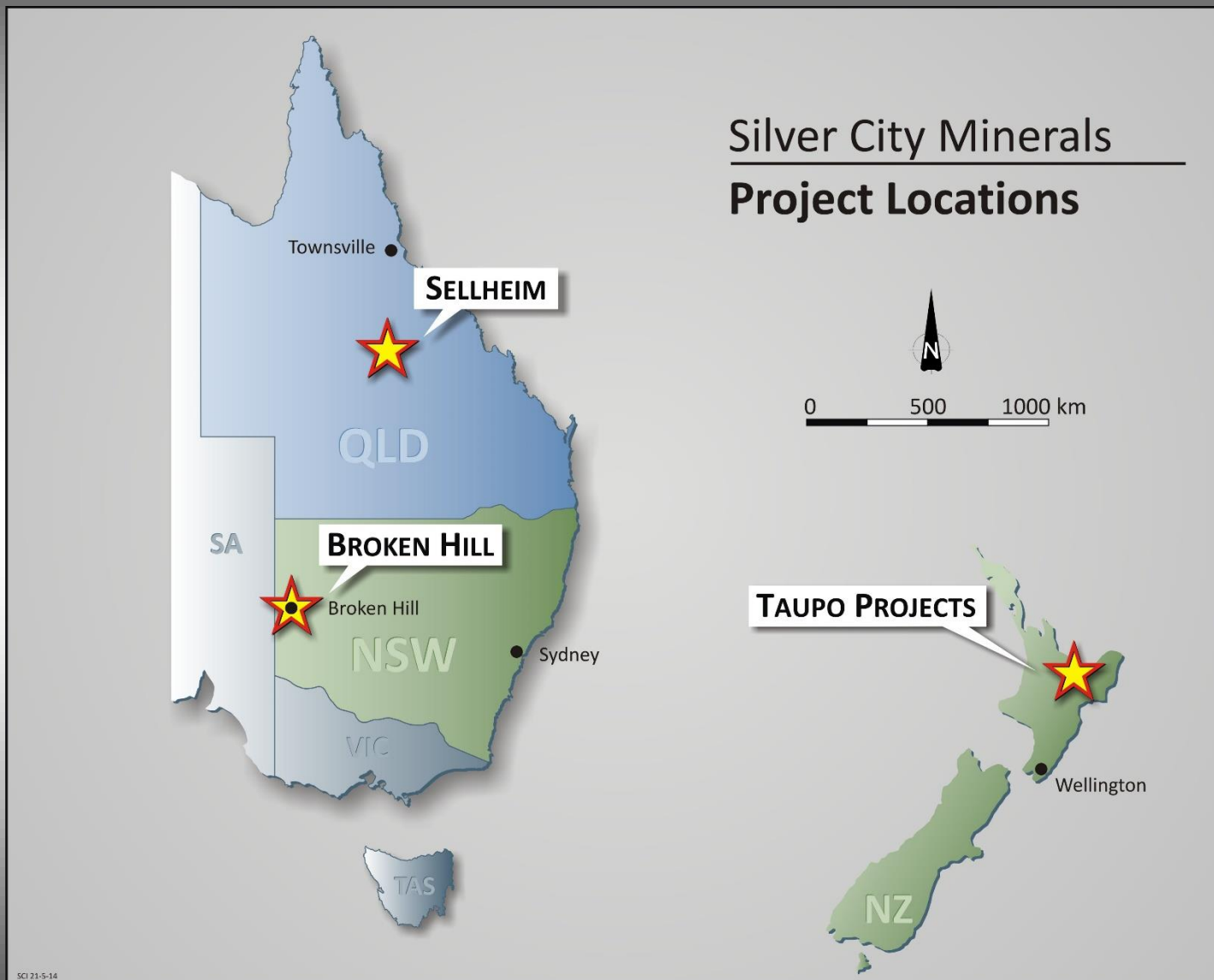
Greg is a geologist with 30 years exploration and mine operational experience. Senior management roles with Western Mining and Sino Gold. He currently holds directorships with ASX-listed companies PlatSearch NL, Eastern Iron Limited and Thomson Resources. Greg is currently the Managing Director of Variscan Mines Limited.

Ian Hume

Non-Executive Director

Ian was a founding partner of The Sentient Group, a private equity fund specialising in global investment in the resources sector. From 1994 to 2000, Mr Hume served as a consultant to AMP Society's Private Capital Division, focused on international mining and telecommunications investments primarily in North and South America, Russia and the Pacific Rim.

SILVER CITY MINERALS PROJECTS

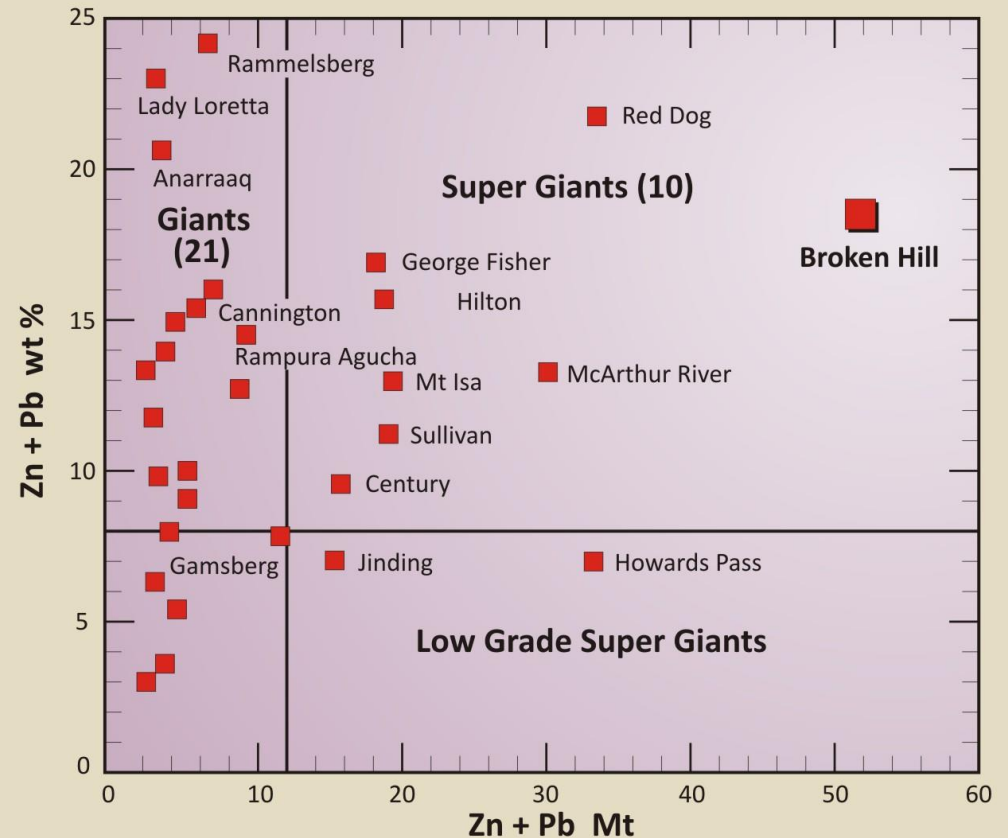




Where does one look for

.....elephants

SILVER CITY MINERALS LIMITED

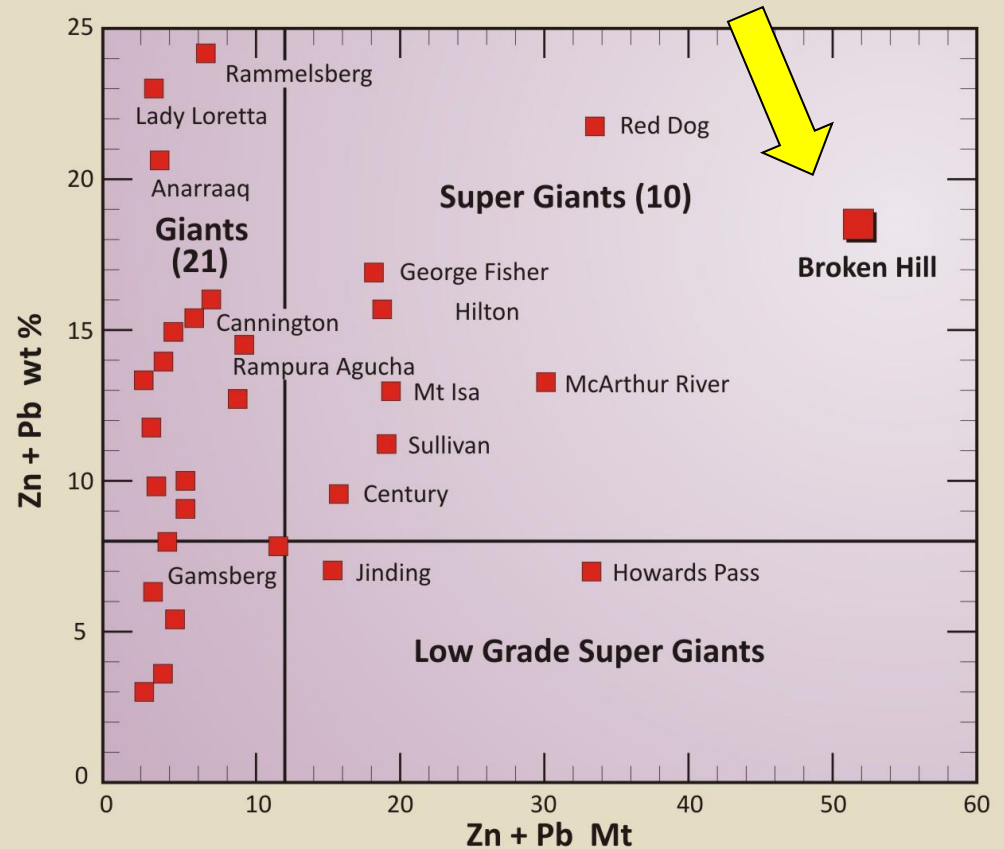


ref: Large et al 2002

Stratiform Sediment Hosted Zn-Pb-Ag Deposits

BROKEN HILL

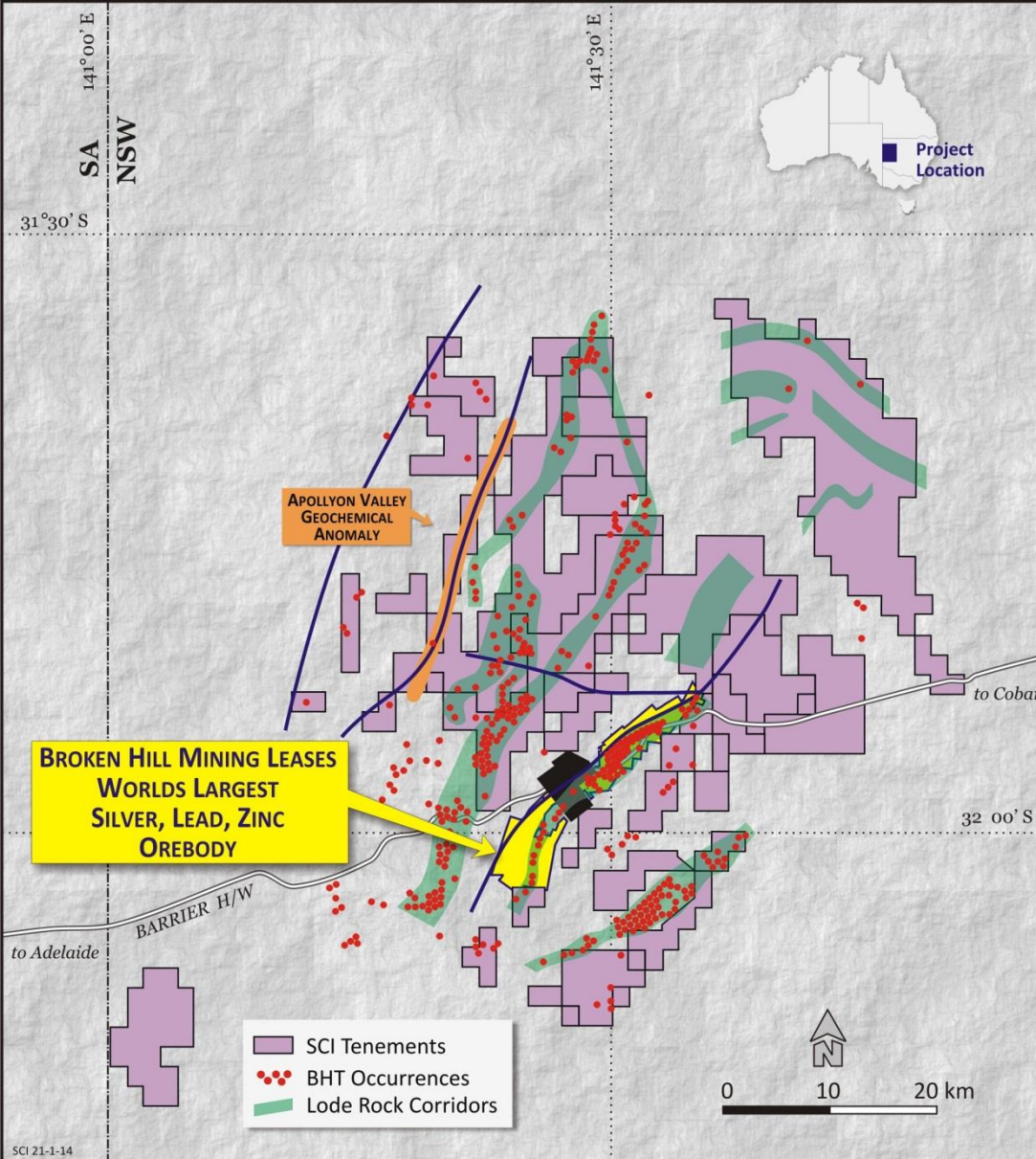
+ 1 Billion ounces Silver



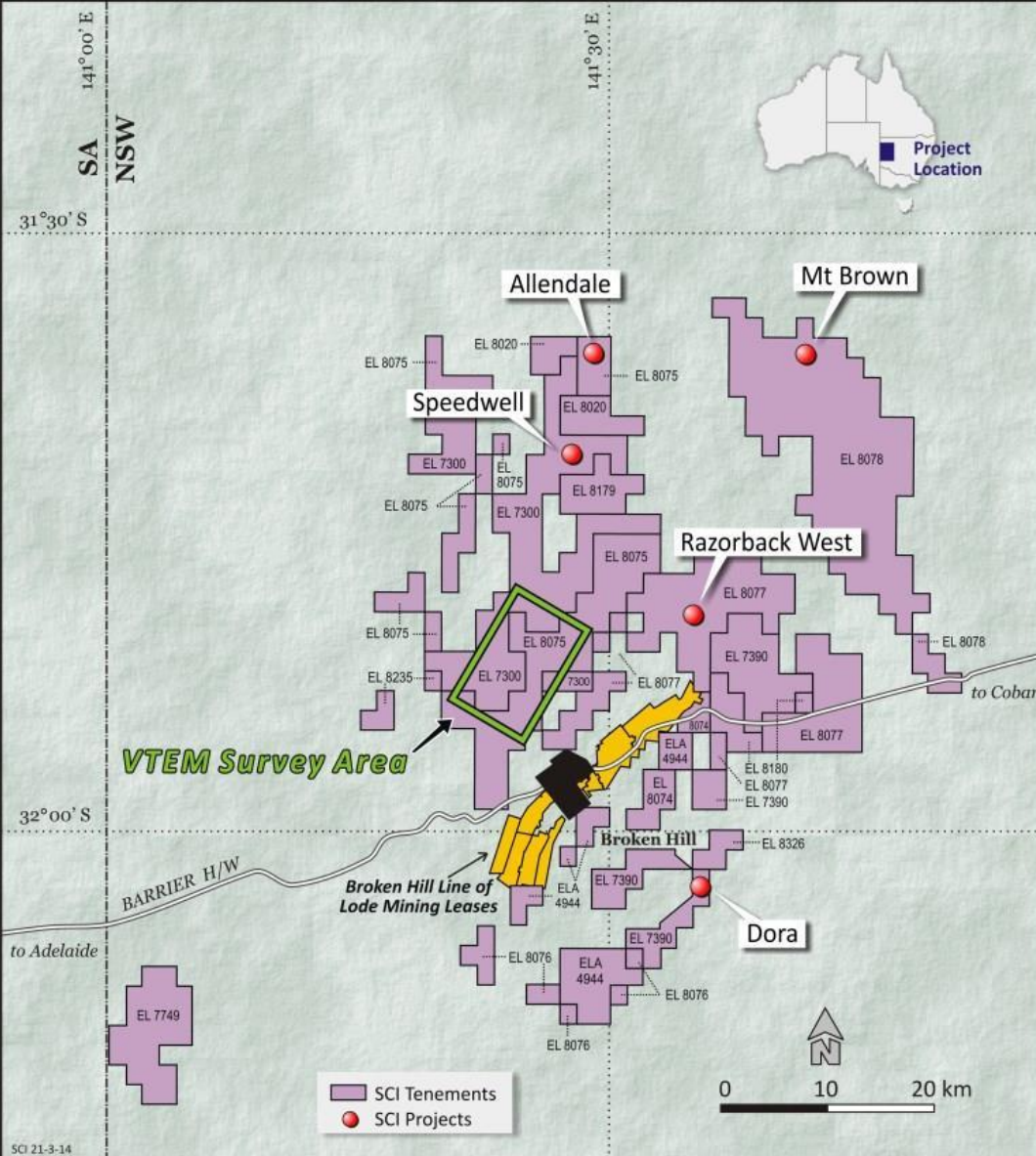
ref: Large et al 2002

Stratiform Sediment Hosted Zn-Pb-Ag Deposits

TENEMENTS BROKEN HILL



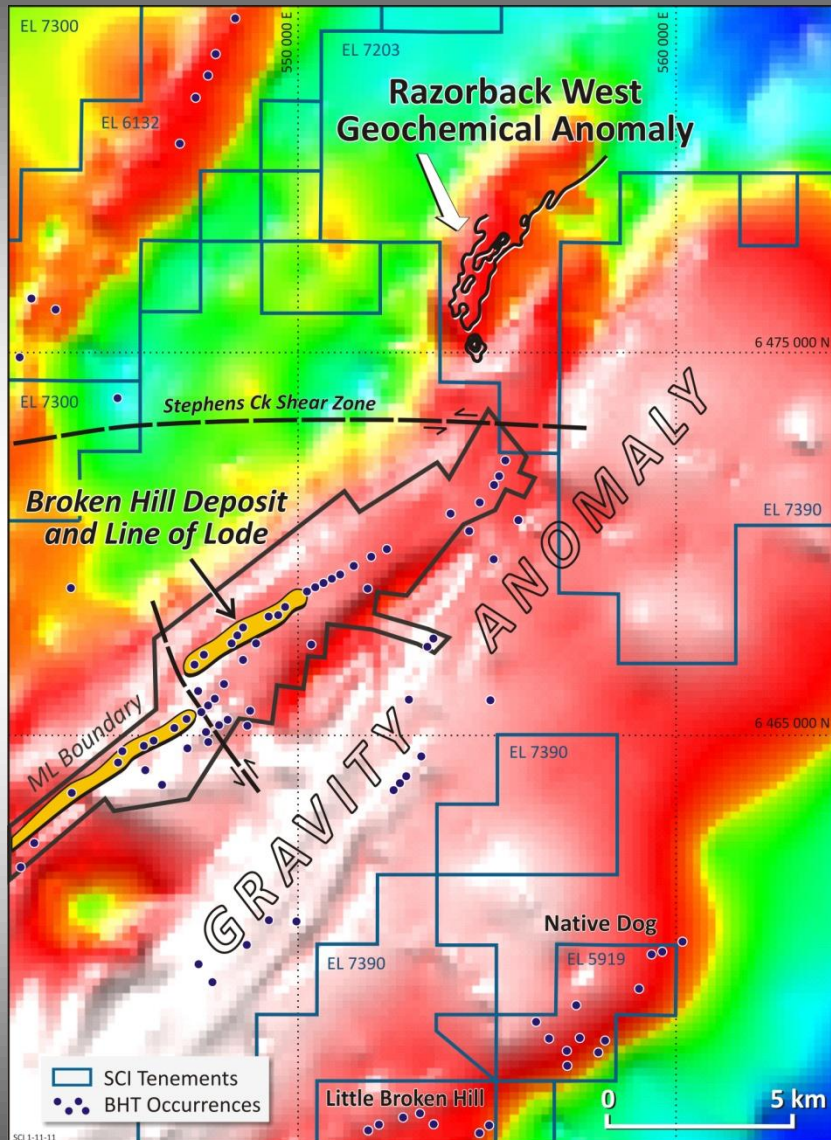
- Strong tenure position
- Belt of prospective rocks and major mineralised structures throughout the tenure
- Greater than 100km of strike of “LODE ROCKS”
- 50% lie under shallow cover



Area of Focus

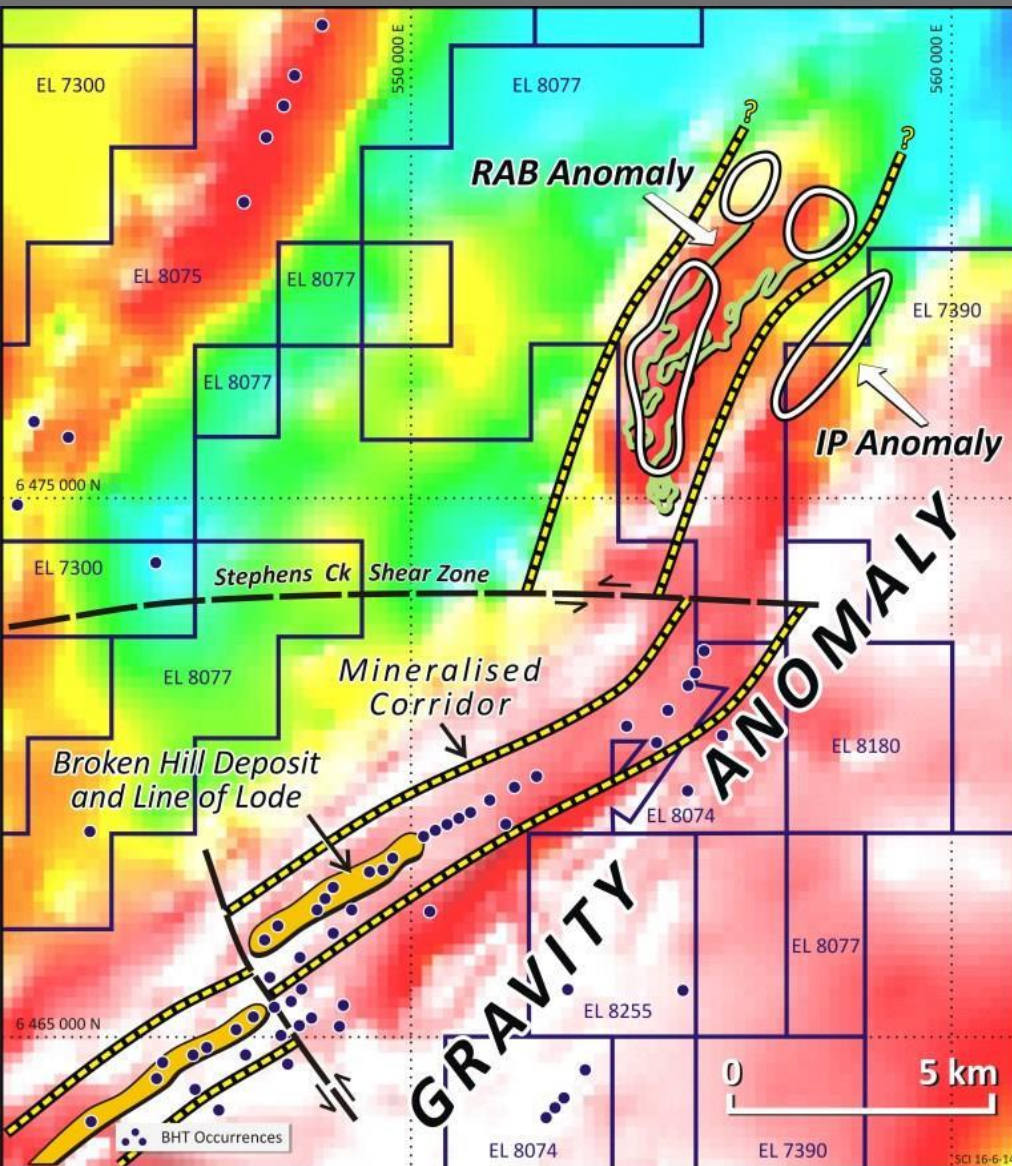
- **18 VTEM targets**
Each requires systematic ground follow-up. Rock chip and soil geochem, fixed loop ground EM.
- **Razorback West**
Large coincident geochemical, IP and gravity anomalies
- **Speedwell**
Large coincident geochemical and IP anomaly with quartz-gahnite gossans
- **Allendale**
Multiple sulphide-rich intersections with Zn-Pb-Ag
- **Mount Brown**
Broad low grade Pb-Zn intersections
- **Dora**
EM anomaly coincident with fold nose, lode rocks and old workings

Razorback West

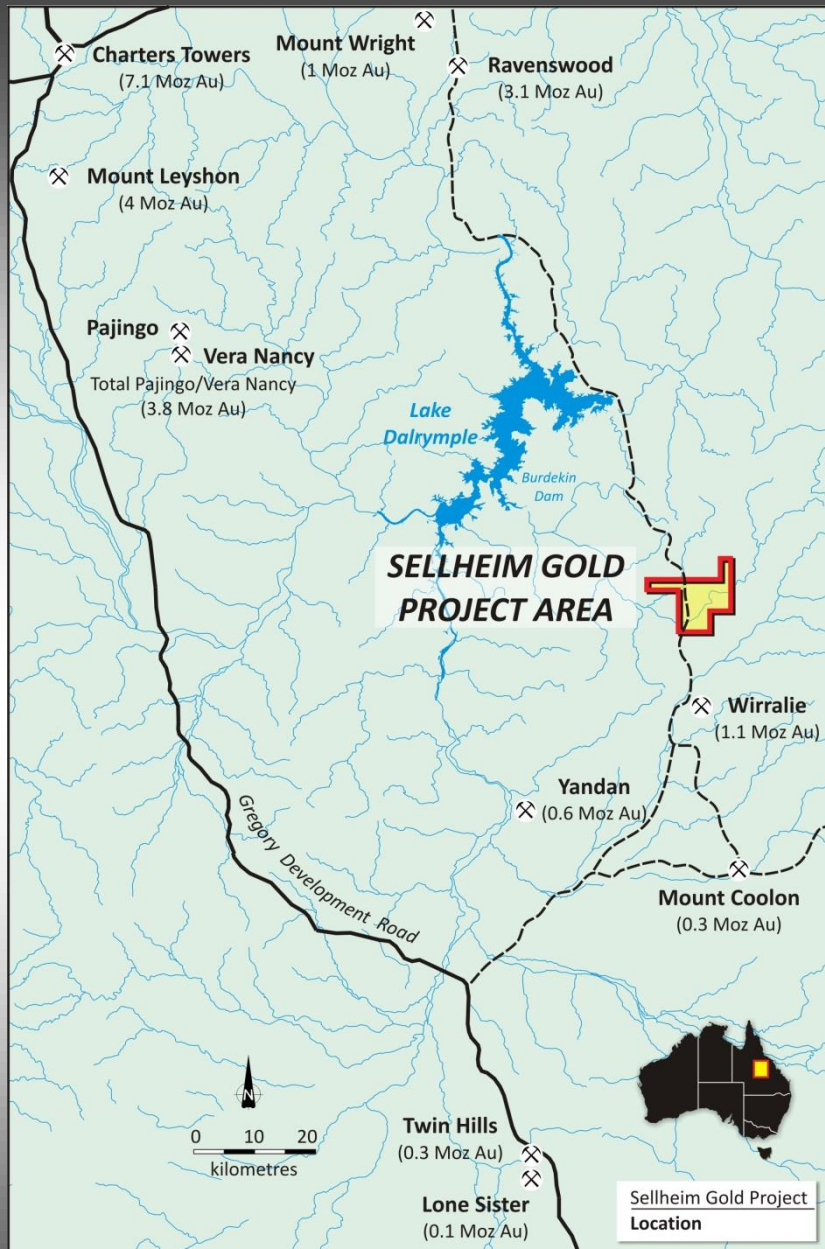


- Broken Hill dominated by large gravity anomaly
- Broken Hill deposit located on western edge
- Little Broken Hill/Native Dog located on eastern edge
- ***Razorback West (under cover) located also on western edge, fault offset***

Razorback West

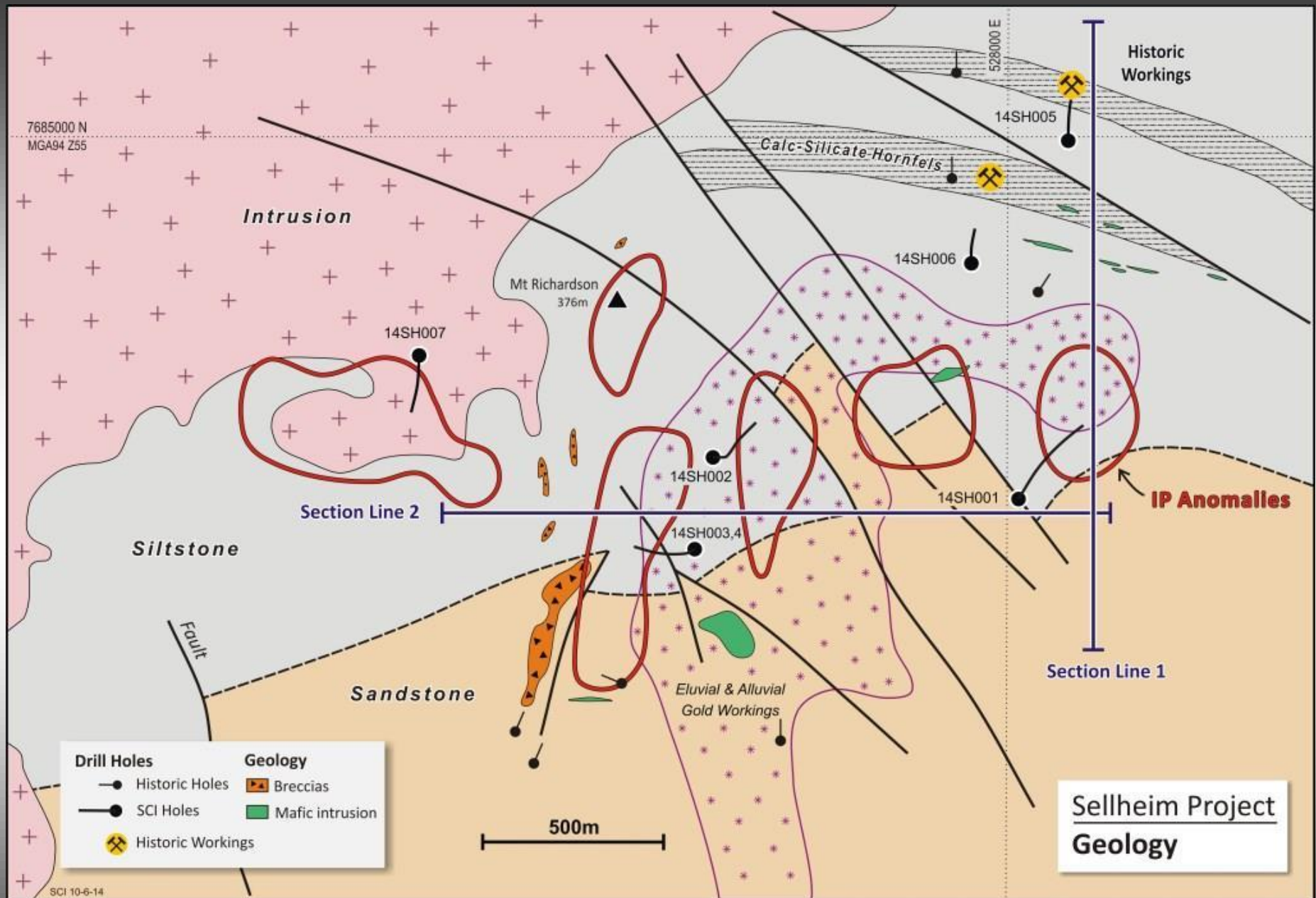


- Coincident gravity, IP and geochemistry
- SCI drilling shows correct stratigraphic sequence hosting disseminated base metal sulphides (lead plus zinc)
- Anomaly over 5 kilometres long
- Potential to host major silver-lead-zinc orebody
- **VTEM, downhole MMR and drilling planned**

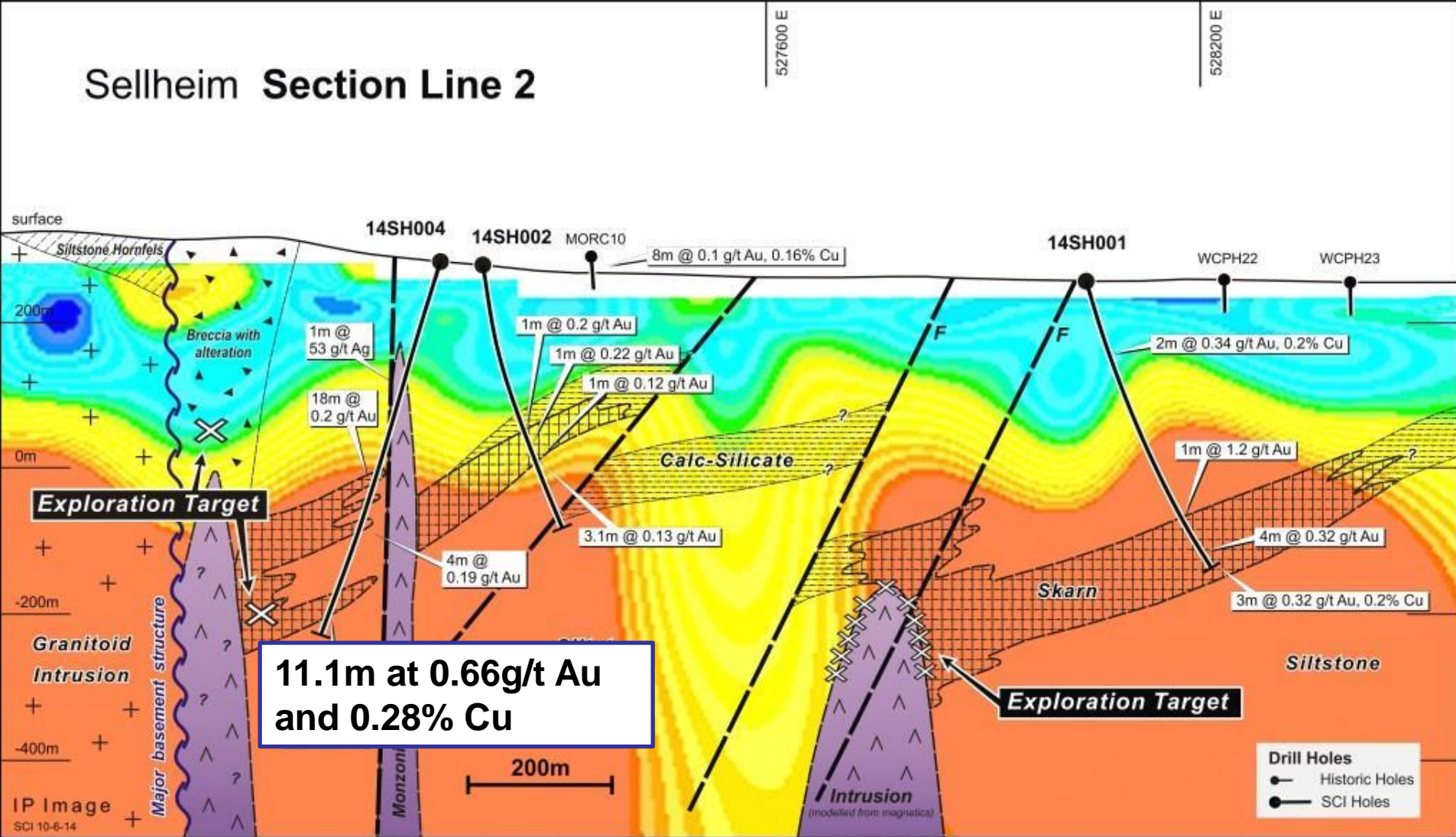


SELLHEIM PROJECT

- Site of historic alluvial goldfield (1860s to present)
- Mining leases and EPMs
- Well endowed province: Charters Towers, Ravenswood, northern part of Drummond Basin with gold inventory of approximately 20 million ounces
- Intrusion-related gold model
- Rock geochemistry Au, Cu, Mo, Bi (\pm W, Sn and Ag)
- Limited exploration mid-1980s to 1990s and 2006, but very little since.

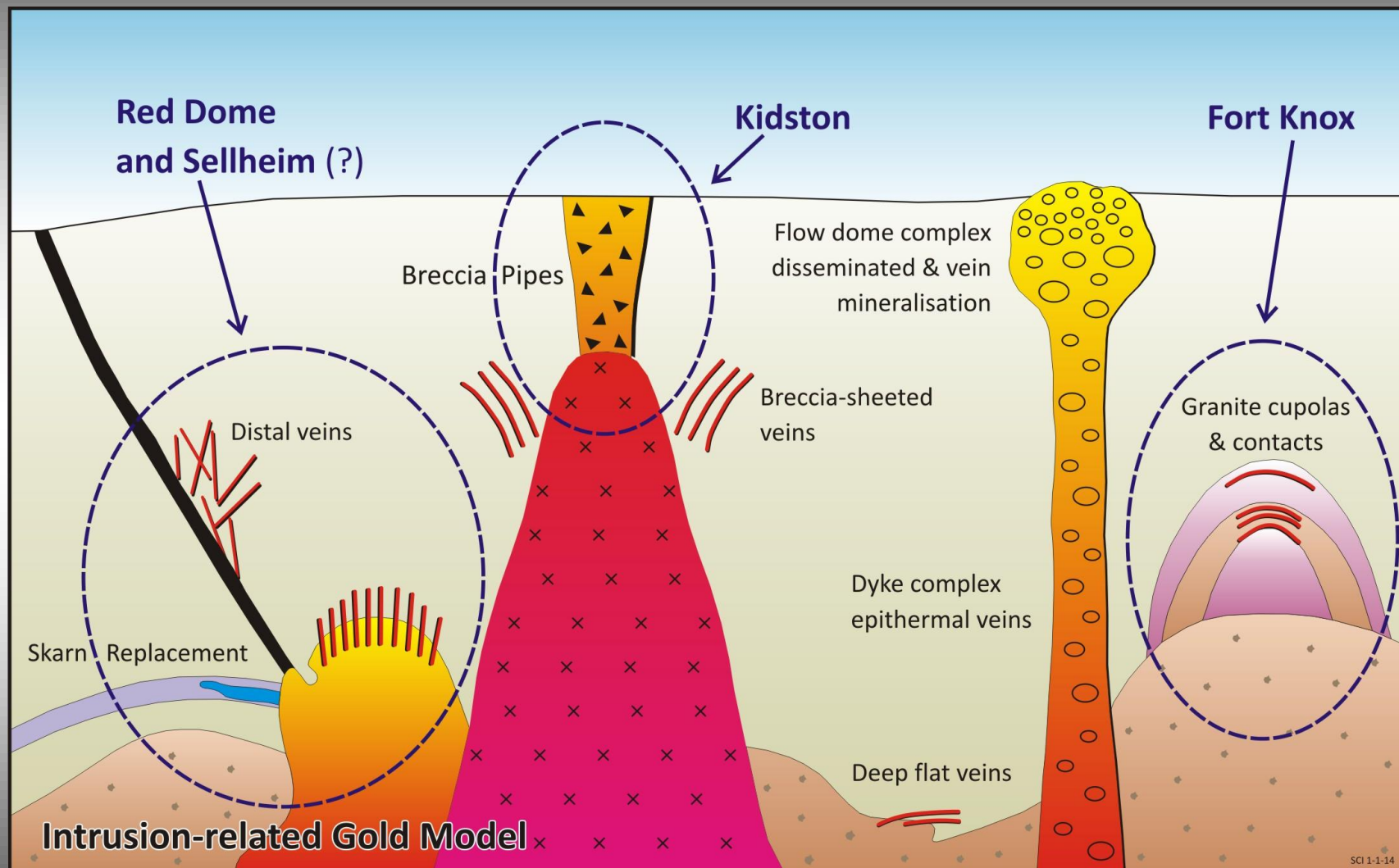


Sellheim Section Line 2



Sellheim East-West Cross-section

INTRUSION-RELATED GOLD MODEL



INTRUSION RELATED GOLD DEPOSITS

Alaska

- Donlin Creek – 23 million ozs gold (10th largest global Au deposit)
- Livengood – 20.6 million ozs gold (31st largest)
- Pogo – 4.8 million ozs gold
- Fort Knox – 4.1 million ozs gold

Yukon

- Dublin Gulch – 3 million ozs gold
- Red Mountain – 2 million ozs gold
- Brewery Creek – 1.2 million ozs gold

Queensland

- Kidston – 5 million ozs gold
- Mt Leyshon – 3.2 million ozs gold
- Red Dome – 1.3 million ozs gold

Sources: Baker et al. Economic Geology 2006; Thompson et al. Min Deposita 1999; SEG News Oct 12; websites of International Tower Hill Mines; Golden Predator; Victoria Gold; Resolute Mining.

SILVER CITY NEXT SIX MONTHS

SELLHEIM QUEENSLAND: Gold targets.

- Detailed geological mapping and reconnaissance geochemistry
- ***Drilling: Follow-up magnetite skarn intersection of 11.1m at 0.66 g/t gold and 0.28% copper***

BROKEN HILL: High grade silver-lead-zinc target

- Evaluation of VTEM anomalies
- Razorback West ground and airborne geophysical surveys
- RAB geochemistry

NEW ZEALAND: High grade epithermal gold target

- Preliminary ground mapping and sampling

SILVER CITY MINERALS

BROKEN HILL, NSW

- LARGE FOCUSED LAND TENURE POSITION, FIRST EVER CONSOLIDATION OF TENURE AT BROKEN HILL
- WORLD CLASS MINING DISTRICT
- POTENTIAL FOR HIGH GRADE GIANT BASEMETAL AND SILVER-RICH OREBODIES

SELLHEIM, QUEENSLAND

- UNIQUE EXPLORATION OPPORTUNITY IN GOLD DISTRICT
- GOLD SOURCE LIKELY TO BE INTRUSIONS AT DEPTH
- IP AND GEOCHEMICAL ANOMALIES PROVIDE CLEAR DRILL TARGETS

NEW ZEALAND

- HIGH GRADE GOLD-SILVER EPITHERMAL TARGETS

SILVER CITY MINERALS LIMITED

ABN 68 130 933 309



ASX Code: SCI

Level 1, 80 Chandos Street
St Leonards
NSW 2065
Australia
+61 2 94371737

www.silvercityminerals.com.au