



ASX:GCM

Advancing Our Downstream Strategy

Driving growth with breakthrough VHD
Technology and Single Crystal Mullite Fibres

gcm minerals.com.au



Disclaimer



This presentation has been prepared by Green Critical Minerals Limited (GCM or the Company). It contains general information about the Company's activities current as at the date of the presentation. The information is provided in summary form and does not purport to be complete. This presentation is not to be distributed (nor taken to have been distributed) to any persons in any jurisdictions to whom an offer or solicitation to buy shares in the Company would be unlawful. Any recipient of the presentation should observe any such restrictions on the distribution of this presentation and warrants to the Company that the receipt of the presentation is not unlawful. It should not be considered as an offer or invitation to subscribe for or purchase any securities in the Company that would require a disclosure document under the Corporations Act 2001 (Cth) or as an inducement to make an offer or invitation with respect to those securities. No agreement to subscribe for securities in the Company will be entered into on the basis of this presentation or any information, opinions or conclusions expressed in the course of this presentation.

Some statements in this presentation regarding future events are forward-looking statements or opinions. Such forecasts, projections and information are not a guarantee of future performance and involve unknown risks and uncertainties. Actual results and developments may differ materially from those expressed or implied. There are a number of risks, both specific to GCM, and of a general nature which may affect the future operating and financial performance of GCM, and the value of an investment in GCM including and not limited to title risk, renewal risk, economic conditions, stock market fluctuations, commodity demand and price movements, timing of access to infrastructure, timing of environmental approvals, regulatory risks, operational risks, reliance on key personnel, reserve estimations, native title risks, foreign currency fluctuations, and mining development, construction and commissioning risk. You should not act or refrain from acting in reliance on this presentation, or any information, opinions or conclusions expressed in the course of this presentation. This presentation does not purport to be all inclusive or to contain all information which its recipients may require in order to make an informed assessment of the prospects of GCM. You should conduct your own investigation and perform your own analysis in order to satisfy yourself as to the accuracy and completeness of the information, statements and opinions contained in this presentation before making any investment decision. Recipients of this presentation must undertake their own due diligence and make their own assumptions in respect of the information contained in this presentation and should obtain independent professional advice before making any decision based on the information. To the maximum extent permitted by law, no representation, warranty or undertaking, express or implied, is made and, to the maximum extent permitted by law, no responsibility or liability is accepted by the Company or any of its officers, employees, agents or consultants or any other persons as to the adequacy, accuracy, completeness or reasonableness of the information in this presentation. To the maximum extent permitted by law, no responsibility for any errors or omissions from this presentation whether arising out of negligence or otherwise is accepted. An investment in the shares of the Company is to be considered highly speculative.

This Presentation contains estimates and information concerning our industry and our business, including estimated market size and projected growth rates of the markets for our products. Unless otherwise expressly stated, we obtained this industry, business, market, and other information from reports, research surveys, studies and similar data prepared by third parties, industry, and general publications, government data and similar sources. This Presentation also includes certain information and data that is derived from internal research. While we believe that our internal research is reliable, such research has not been verified by any third party. Estimates and information concerning our industry and our business involve a number of assumptions and limitations. Although we are responsible for all of the disclosure contained in this Presentation and we believe the third-party market position, market opportunity and market size data included in this Presentation are reliable, we have not independently verified the accuracy or completeness of this third-party data. Information that is based on projections, assumptions and estimates of our future performance and the future performance of the industry in which we operate is necessarily subject to a high degree of uncertainty and risk due to a variety of factors, which could cause results to differ materially from those expressed in these publications and reports.

This document has been authorised for release by the Company's Board of directors.

Why Green Critical Minerals is Exciting



VHD Graphite represents cutting-edge innovation

Developed by leading materials scientist Professor Charles Sorrell (UNSW)



Wholly owned revolutionary process

Speed to market:
Targeting customer qualification commencing in H2 2025



World class, award-winning team in materials scientists and engineers



Vertically integrated opportunity in specialised, high margin graphite

Significant reduction in energy consumption whilst producing superior properties



Applications in Data Centers, AI, Supercomputers, Electronics, Clean Energy, Nuclear

Introduction and Strategic Overview



01

VHD Graphite Technology

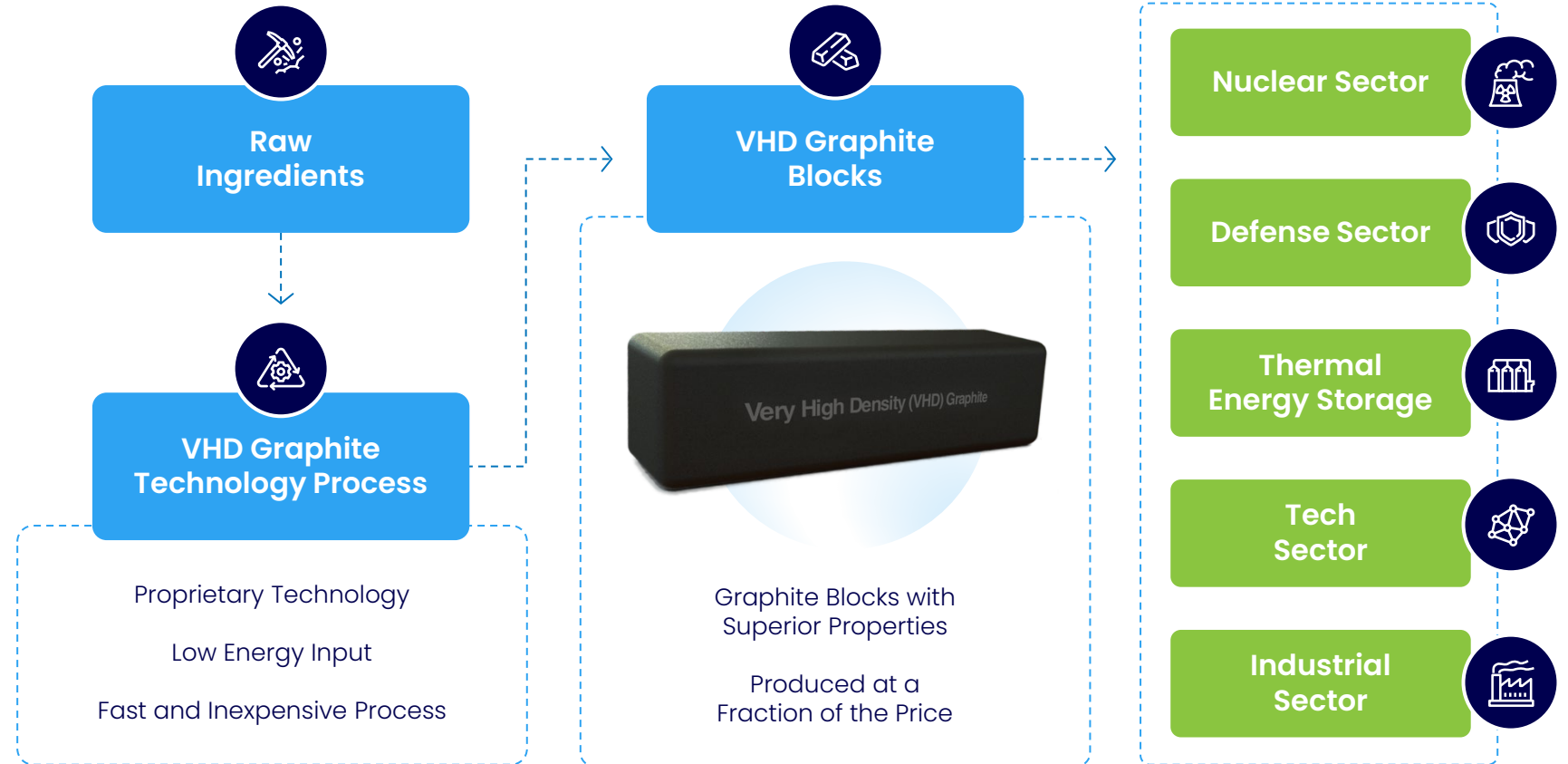


Potential to Disrupt a

+\$700 B

US Market ¹ (2023)

with Superior Graphite
Blocks at Fraction of
the Time and Cost ²



¹Refer slide 12

²The VHD Graphite technology is not yet produced at a commercial level. The technology is in the development phase with the aim to commercialise within the next 12 months

Why VHD Graphite is the Future of Advanced Materials



Faster, More Affordable, and Superior to Pyrolytic and Nuclear Graphite

Superior Properties



Superior or comparable properties to Pyrolytic and Nuclear Graphite blocks.

Superior thermal conductivity and electrical resistivity.

Directional control of heat and electricity.

Very High Density / Extremely low porosity.

Advanced Stage of Development



VHD Graphite can achieve initial product commercialisation in around 12 months

Targeting the growing demand for:

Thermal management advances to support **Data Centres, AI, Supercomputers, Electronics, Automotive.**

Solar-Thermal Energy storage advances to support renewable energy and decarbonisation.

Scalable



Further R&D has the potential to open additional markets:

- Aerospace
- Defense
- Nuclear
- Batteries
- Fuel Cells
- Industrial Applications

Potential to scale **manufacturing globally.**

Strategic Acquisition Enabling Rapid Commercialisation of VHD Graphite



Supports Rapid Commercialisation



VHD Graphite represents cutting-edge innovation

Developed by leading materials scientist
Professor Charles Sorrell (UNSW)

Lower energy input, faster
production and exceptional
properties makes VHD graphite
products attractive to a wide range
of industries and markets.



Exclusive acquisition of 100% rights

To a breakthrough process for producing
very-dense VHD graphite shapes and blocks.



Attractive terms agreed with no upfront consideration payable by GCM

Consideration based on revenue milestones,
payable over three milestones and capped at
\$5M.

No cost to GCM until revenue is generated.



Wide range of potential applications

Including Defense, Thermal Management,
Solar-Thermal Energy Storage, Nuclear,
Batteries, Fuel Cells and Industrial Applications.



Revolutionary manufacturing process

With a production period of **24-36 hours** and
at moderate graphitisation temperatures
(1500 °C), compared with **up to twelve weeks**
for existing competitors at high temperatures
up to 2900°C.

Research and Development Team



World Class Materials Scientist and Materials Engineers



**Professor
Charles Sorrell**

Inventor of VHD Graphite (UNSW)

-
- Professor, School of Materials Science & Engineering, University of New South Wales.
 - Winner of the 2006 Pfiel Award, Institute of Materials, Minerals, & Mining
 - Published 100+ peer-reviewed journal articles and 20+ book chapters in the last five years, showcasing global leadership in materials innovation



**Professor
Andrew Ruys**

Head of Research and Development

-
- World-class ceramic engineer with a PhD from the University of New South Wales
 - Previously Professor of Engineering at University of Sydney (School of AMME, Centre for Advanced Materials Technology and Discipline of Biomedical Engineering)
 - Co-founder of Modern Ceramics Pty Ltd, a global leader in silicon carbide ceramics manufacturing, and a pioneer in scaling advanced materials technologies.
 - Foundation member of Sirtex Limited (ASX:SRO), scaled from a \$15M IPO in 2000 to a \$1.9B acquisition by CDH Genetech in 2018.

Innovative Technologies and Competitive Advantages

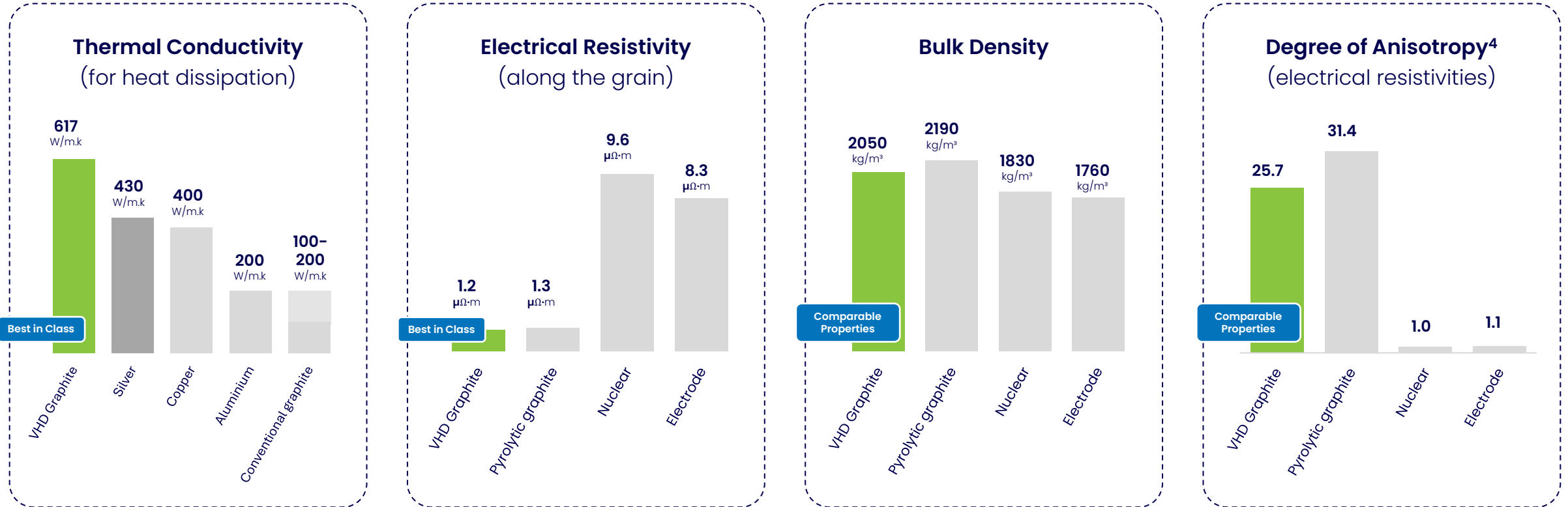
A photograph of a server room with blue lighting. Rows of server racks are visible, with some racks having their doors open, revealing internal components and glowing lights. A blue cart is visible on the left side of the frame.

02

VHD Graphite's Properties³



Superior Material Properties from a Simple Manufacturing Process



³Determined from test work performed at the UNSW laboratories and not at a commercial scale at this stage. UNSW is ranked 31 in the entire world (and number 1 in Australia) for engineering & technology (QS World University Rankings by Subject 2024: Engineering & Technology).

⁴Determined by comparison of electrical resistivities across grain and along grain: [racross grain/ralong grain]

A Simple, Scalable & Fast Manufacturing Process



Whilst Reducing Waste and Emissions⁵

Efficient to Produce

Can Be Produced In 24-36 Hours

Of any block graphite material – ideal for heat management applications.

Significantly Lower Graphitisation Temperature For Production Of 1,500 ° C

Compared to up to 2,900 ° C for primary synthetic graphite.

No Specialised Infrastructure Or Complex Manufacturing Techniques Required

Potential to replicate globally and grow rapidly.



VHD Graphite is not just another form of carbon block. It represents a new class of material with properties that are tailor-made for high-value applications.

⁵Determined from test work performed at the UNSW laboratories and not at a commercial scale at this stage. UNSW is ranked 31 in the entire world (and number 1 in Australia) for engineering & technology (QS World University Rankings by Subject 2024: Engineering & Technology).

Thermal Management Applications Immediate Opportunities



Significant Growth

Opportunities exist in areas like AI, Data Centres, Supercomputers, and Battery Management Systems, which are driving demand for advanced thermal solutions.

Evolution

As devices become smaller, they consume more power and generate more heat, necessitating innovative thermal management solutions.

Heat Sinks for High-Performance Electronics and Computing

VHD Graphite provides superior heat transfer and control, enabling high-performance solutions for electronics and computing systems.

Renewable Energy Applications

The application of VHD Graphite in renewable energy systems improves efficiency and supports the transition to cleaner energy sources.

Thermal Management

Effectively moving heat away from critical components is essential to avoid damage and support the advancement of next-generation technologies.

High Performance Items Demand

The growing demand for high-performance systems requires breakthrough technologies like VHD Graphite to address heat generation challenges.

VHD Graphite Break-Through Technology

This material offers superior heat transfer properties and precise heat dispersion, making it ideal for modern thermal management needs.

Focused R&D to Leverage Product Expansion and to Power Growth



GCM Intends To Become A Leading Supplier Of Graphite Products Across Defense, Aerospace and Nuclear

GCM will produce samples, initiate engagement with strategic customers, and conduct product testing to support the successful commercialisation of VHD Graphite technologies.

New Energy Source

The development of VHD Graphite slabs and collaboration with power generation companies will enable the introduction of a new, clean constant energy source.

Decarbonisation of Energy Grids

Innovative thinking and cutting-edge technology are essential to transform energy grids and reduce carbon footprints globally.

Energy Storage Solutions

Renewable energy sources depend on advanced storage solutions to meet base load power demands and enhance reliability.

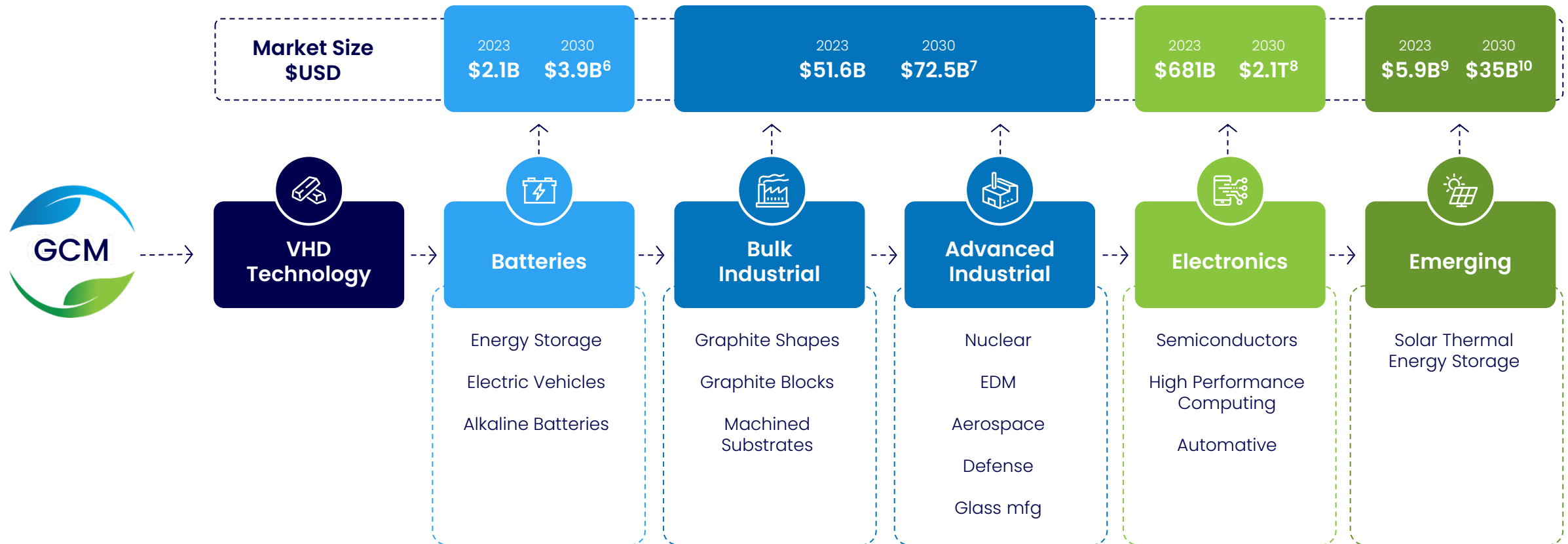
Clean Energy

VHD Graphite facilitates the production of consistent, clean energy, contributing to global sustainability efforts.

Immediate and Scalable Market Opportunities



Global Demand across Rapidly Growing Markets



⁶Wood Mackenzie, October 2024 | ⁷Lone Star Technical Minerals October 2024 | ⁸Yahoo Finance October 2024 | ⁹Fortune Business Insights September 2024 | ¹⁰Allied Market Research, Solar Thermal Market Research 2031

Grant Funding Opportunities

Opportunities Identified and Discussions Commenced



VHD Technology Produces An Extremely Versatile Material

Universally used in products in demand today.



Graphite Is Recognised Universally As A Critical Mineral

With a wide range of applications to the technology and renewable energy sectors.

Opportunity to accelerate the commercialisation process without diluting shareholder equity.

Australia and the USA provide grant funding opportunities, via agencies such as:



Australian Government
Australian Renewable
Energy Agency

ARENA

Roadmap and Commercial Strategy



03

Near Term Milestones



To Support Commercialisation and Transition to Revenue

Personnel

Appoint a Head of Research and Development to lead R&D activities.

Pilot Plant

Commission pilot plant capable of producing graphite blocks for use in heat sinks and also for solar-thermal applications. Binding heads of agreement signed, furnace acquired, pilot plant design progressed.

Customer Qualification

Provide graphite blocks for customer product testing, prototyping, and acceptance.

Non-Dilutive Funding

Progress grant funding applications to provide off-balance sheet funding.

Strategic Partnerships

Engage with tier one end users of graphite block products to open new markets for graphite blocks e.g. solar-thermal, defense, aerospace.

Commercialisation

Customer acceptance of VHD Graphite blocks and transition to supply phase and production scale-up.



Professor Andrew Ruys appointed.



Industrial facility leased and GCM have possession.



Acquisition of key pilot plant equipment complete.

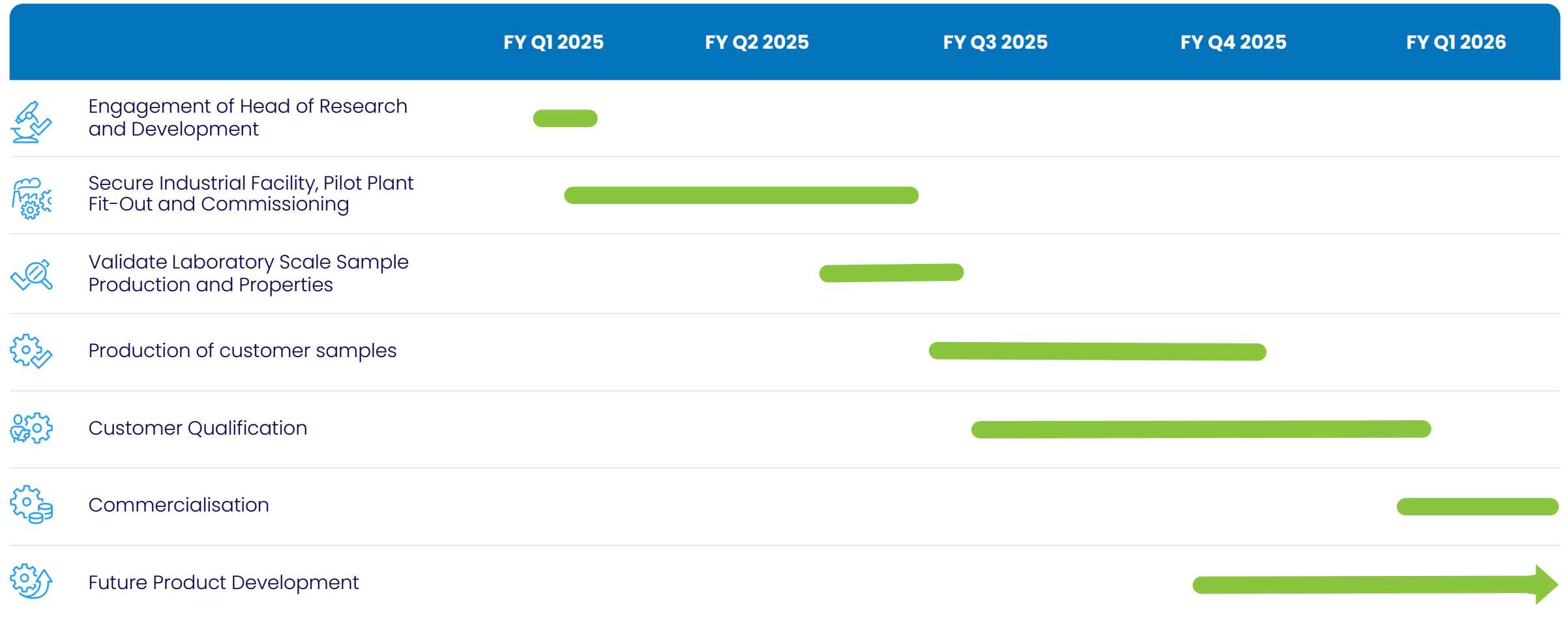


Pilot construction commenced.



ARENA funding opportunities identified, and preliminary discussions initiated.

Fast Track to Commercialisation¹¹



¹¹Not to scale.

Introducing Single Crystal Mullite Fibre

04

Single Crystal Mullite Fibres

Regarded as the “holy grail” of composite reinforcement materials, offers exceptional properties



High-Temperature Stability

Preserves structural integrity at elevated temperatures, critical for aerospace and industrial applications.



Superior Mechanical Strength

Delivers high tensile strength and fracture toughness, enhancing the durability of composite materials.



Low Density

Supports lightweight composites, essential for weight-sensitive applications.



Chemical Resistance

Exhibits strong resistance to corrosion and chemical degradation, extending the lifespan of components.

A Vital Material

For reinforcing metal matrix composites (MMCs) and ceramic matrix composites (CMCs), ensuring superior performance in extreme environments.

High-end Non-oxide Ceramic Fibre

Such as silicon carbide (SiC) fibres, are similarly renowned for their exceptional properties, including high-temperature stability, strength, and oxidation resistance. These attributes make them ideal for reinforcing metal and ceramic matrix composites used in industries such as aerospace, automotive, and defense.

Market Potential and Size¹²



MMC Growth



The global metal matrix composites (MMC) is experiencing steady growth, driven by rising demand across key industries such as **automotive, aerospace, and defense**.

\$810M

2023 Market Value in USD

\$2.9B+

2032 Projected Market Value in USD

12.4%

Compound Annual Growth Rate (CAGR)

Delivering Advantages



This growth reflects the increasing demand

for materials offering superior performance in extreme environments, with MMCs delivering clear advantages over traditional options for aerospace, defense, and industrial applications.

Pricing



The pricing of these advanced fibres depends

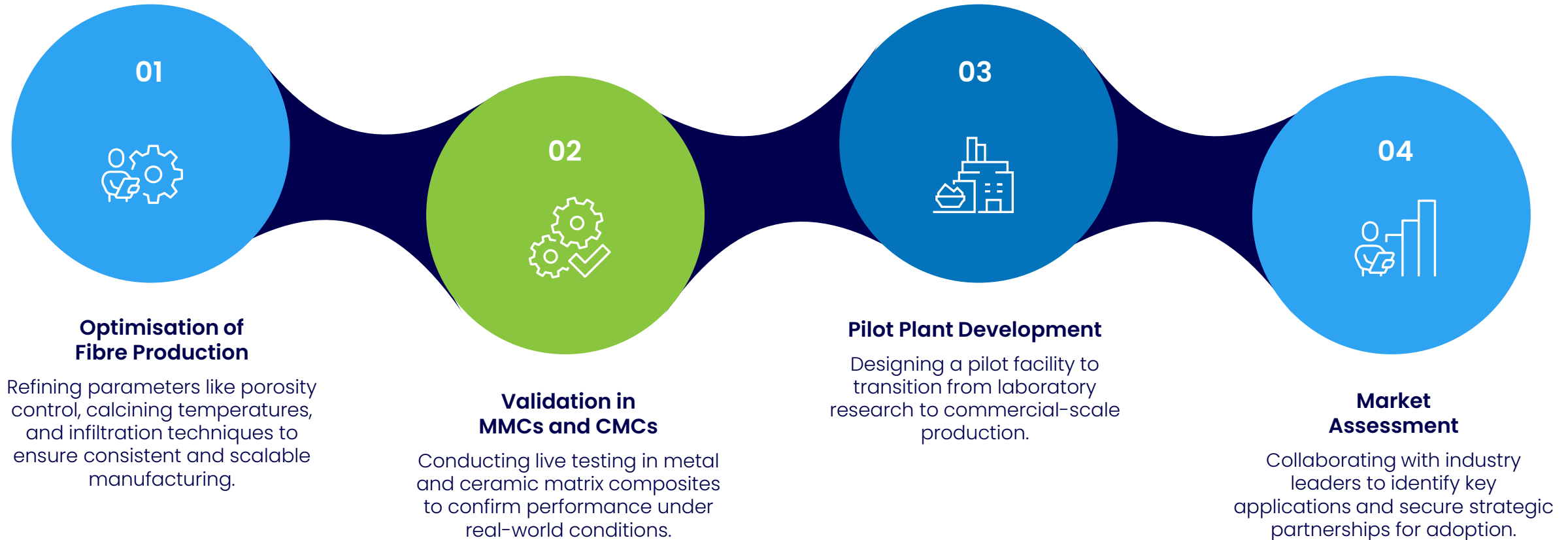
on manufacturing processes, quality, and intended applications. For example, chemical vapor deposited (CVD) silicon carbide (SiC) monofilaments are among the most expensive ceramic fibres, with prices reaching up to €8,000 per kilogram (approximately USD 11,000 per kilogram).

¹²GCM ASX Announcement 27th November 2024

Single-Crystal Mullite Fibres

Work Program Overview

GCM is initiating a comprehensive work program to advance single-crystal mullite fibre technology, based on prior research recommendations



Unlocking the Potential of Single-Crystal Mullite Fibres

Single-crystal offering unparalleled properties:

Exceptional strength, corrosion resistance, and stability in both reducing and oxidising atmospheres.

High melting point

1828°–1890°C

Low coefficient of thermal expansion

$6.03 \times 10^{-6} \text{ }^{\circ}\text{C}^{-1}$ (20°–1600°C)

Low thermal conductivity

$3.89 \text{ Wm}^{-1}\text{K}^{-1}$ at 1400°C

Not Yet Commercially Available

Despite its remarkable attributes. Previously, the only commercially produced single-crystal fibre was alumina, developed by Sapphicon in the early 2000s at a cost of **US\$100,000/kg**.

3-Year Australian Research Council Linkage Grant (ARC)

Secured by CML's wholly owned subsidiary, TopFibre Pty Ltd, in partnership with the UNSW School of Materials Science and Engineering, to address this gap.

Previous Work Performed

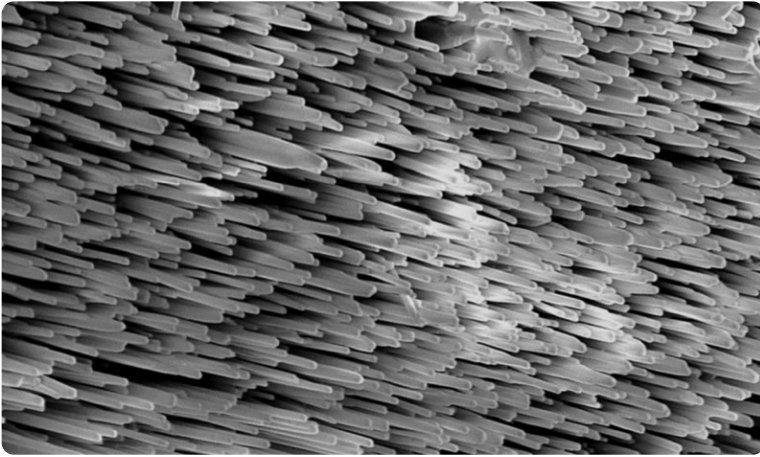
The program's core objective was to pioneer scalable methods for producing commercial quantities of single-crystal mullite fibres from topaz. This work was specifically tailored for use in metal matrix composites (MMCs) and ceramic matrix composites (CMCs).

Proof of concept was successfully achieved,

Demonstrating the feasibility of this innovative approach and laying the groundwork for further development and commercialisation.

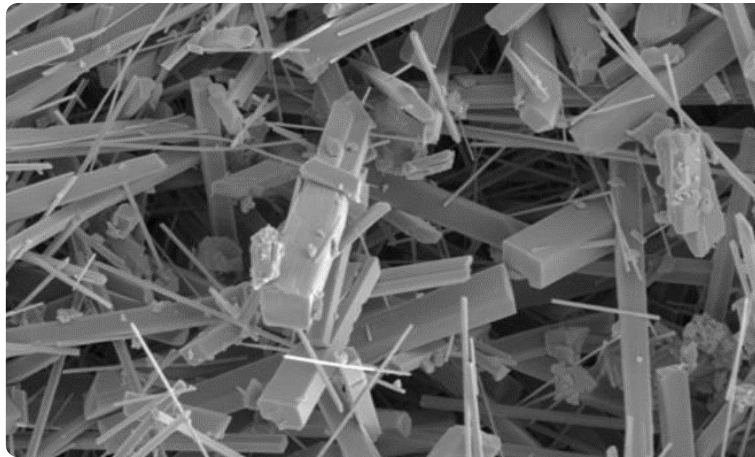


Advancements in Single-Crystal Mullite Fibre Development



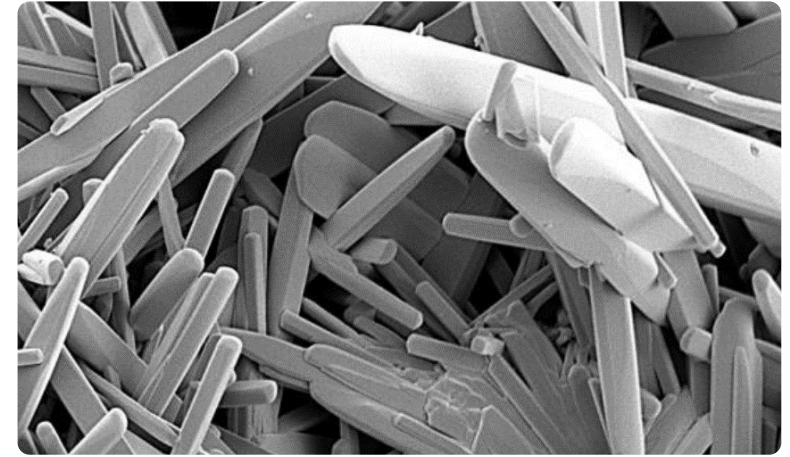
Template-Grown Fibre Proof-of-Concept

Demonstrates the feasibility of fabricating parallel, separable fibres.



Fibre Coarsening Potential

Conversion from thin whiskers to thicker fibres ($\geq 4\mu\text{m}$) is technically feasible – GCM has identified potential pathways for the next research stage.



Fibre Length Achievement

Fibres with a maximum length of $\leq 35\mu\text{m}$ have been successfully fabricated

Corporate Overview

An abstract graphic featuring numerous thin, glowing blue lines that curve and flow across the frame. These lines are punctuated by small, bright blue dots, creating a sense of motion and digital connectivity. The background is a deep, dark blue, which makes the glowing elements stand out.

05

Corporate Snapshot



Board of Directors

Charles Thomas

Non-Executive Chairman

Christopher Zielinski

Non-Executive Director

Clinton Booth

CEO and Managing Director

New Leadership

Clinton Booth appointed as CEO and Managing Director in 2024, bringing extensive experience in mineral exploration, project and corporate development, and corporate strategy.

AGM 2024 | ASX:GCM



Commitment to Growth

With a robust leadership team and solid financials, we are well-positioned to advance our strategic initiatives and deliver value to our shareholders.



Market Capitalisation

\$9.54M_{AUD}

As of 4th December 2024



Cash on Hand

\$3.12M_{AUD}

September Quarterly Report + Capital Raise
in November 2024

Comparable ASX Listed Companies¹³



Market Cap Comparison¹⁴

A\$M

1,600

1,400

1,200

1,000

800

600

400

200

0

■ Market Cap (A\$M)

Valuation Upside
Post Acquisition?

SILEX SYSTEMS

IPERION X

ALPHA HPA

NOVONIX

QUANTUM GRAPHITE

ZEOTECH

MTM

GCM

Company

ASX Code

Market Cap¹⁴

Stage

Silex Systems Limited

SLX

\$1.49Bn

Production

Alpha HPA Limited

A4N

\$1.12Bn

Production

Zeotech Limited

ZEO

\$92.69M

Production

IperionX Limited

IPX

\$1.34Bn

Pilot

Novonix Limited

NVX

\$405.92M

Pilot

Quantum Graphite Limited

QGL

\$172.49M

Pilot

MTM Critical Mineral Limited

MTM

\$63.02M

Pilot

Green Critical Minerals Ltd

GCM

\$9.54M

Pilot

¹³The peer comparison presented in this slide is subjective and based on GCM's internal assessment of industrial tech companies operating within similar sectors of mineral processing and extraction. This comparison does not necessarily adhere to any industry-recognised standards and should not be interpreted as an exact like-for-like comparison in terms of stage of development, market cap, or technology maturity. GCM's VHD Graphite technology is currently at a development / pilot plant stage. The companies compared are in various stages of development (as noted in the table), and their progress is based on publicly available information as of the date of this presentation. The development stages referenced in this comparison are for indicative purposes only and are not meant to represent a formal independent analysis based on industry standard. GCM notes that entities listed may be selling different commodities (compared to GCM) or may be selling to different customers / end users. Investors are advised to consult independent sources for a detailed assessment of each company's projects and their stage of development. GCM does not warrant the accuracy of third-party data used for this comparison.

¹⁴As at 04/12/2024, Yahoo Finance



ASX:GCM

Thank you

Corporate Office

349 Hay Street
Subiaco WA 6008

T +61 (08) 9388 0051

E enquiry@gcminerals.com.au

gcminerals.com.au

