



MT CHALMERS

25 October 2022

Highlights



Eleven holes completed at Woods Shaft and four at Mt Chalmers for 1,635 metres.



Broad high-grade copper and gold intersections received from multiple drill holes.



Results from eleven holes now received with significant intersections including:

- **37m @ 3.6% CuEq from 4m; including**
 - 9m @ 6.21 % CuEq from 12m; and
 - 4m @ 8.26 % CuEq from 30m.
- **58m @ 1.26% CuEq from 15m; including**
 - 10m @ 5.26% CuEq from 38m.
- **41m @ 1.09% CuEq from 15m; including**
 - 5m @ 3.41% CuEq from 33m.
- **9m @ 1.12% CuEq from 35m; and**
- **3m @ 8.33% CuEq from 75m.**



Results from the final four holes are yet to be received.



Woods Shaft maiden Mineral Resource Estimate to commence shortly.

Overview

QMiner Limited (ASX:QML) (QMiner or Company) is pleased to provide the following update on exploration and resource drilling operations at its flagship Mt Chalmers Copper and Gold Project, located 17km north-east of Rockhampton, Queensland (Figure 1).

Background¹

In September 2022, the Company completed a fifteen-hole RC drilling program at the Woods Shaft Exploration Target and at Mt Chalmers for 1,635 metres drilled. The Company has now received the results from eight of the eleven holes drilled at Woods Shaft, and three of the four holes drilled at Mt Chalmers.

Results from four holes (QMWRC009-11 from Woods Shaft and MCRC049 from Mt Chalmers) drilled during September are awaited. The samples are currently at ALS Laboratory and are expected in the coming weeks. Base and precious metal results from Woods Shaft (holes QMWRC001-008) and Mt Chalmers (MCRC046-48) RC drilling can be seen in Table 2, with Woods Shaft drill collar locations shown in Figures 2 and Mt Chalmers collar locations shown in Figure 3.

Section AA' from Woods Shaft drilling can be seen in Figure 4 and Section AA' from Mt Chalmers drilling can be seen in Figure 5.

The drilling results from the Woods Shaft prospect have delivered several broad high-grade intersections with exceptional copper equivalent grades of up to **8.26%** in hole QMWSRC001, **5.26%** in hole QMWSRC007 and **8.33%** from hole MCRC046 at Mt Chalmers.

The Woods Shaft prospect is situated 0.7km to the southwest of the Mt Chalmers main deposit and has been defined by previous explorers drilling to be over 250m in strike length and up to 40m wide. Mineralisation is from surface to a depth of 90m in places and contains gold and base metal mineralisation. The geology of the deposit appears similar to that of the Mt Chalmers main lode and is dominated by a sulphide stringer zone.

Mineral resource estimates for Woods Shaft were compiled by previous explorers prior to the release of the JORC 2012 code. However due to the lack of QAQC data, a resource that complies with the current code could not be established.

RC drilling at Wood Shaft has been undertaken by QMines to validate the drilling completed by previous explorers with a view to delivering a maiden JORC 2012 mineral resource in Q1-2023.

Management Comment

QMines Executive Chairman, Andrew Sparke, comments;

"We are extremely pleased with these recent results which demonstrate the quality of the Mt Chalmers project and its development potential.

The Company has already delivered two resources since listing in May 2022 and has a further two planned in the coming months. This is certainly an exciting time to be a QMines shareholder as the Company works towards becoming Australia's next copper developer."

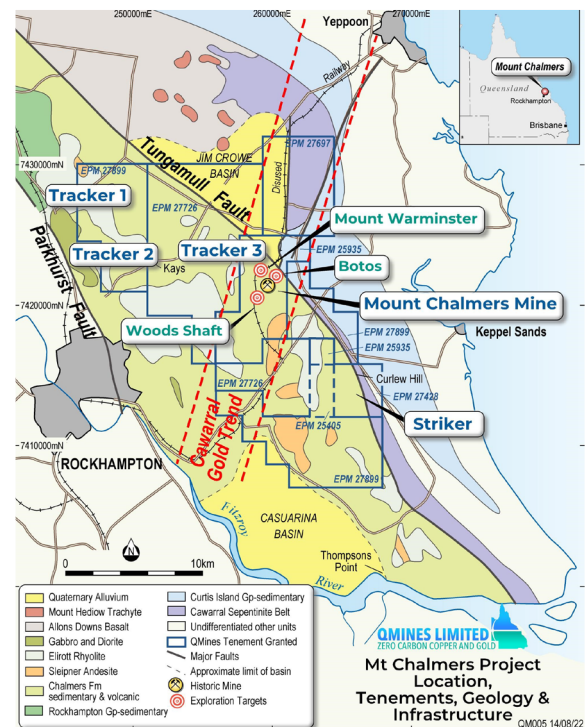


Figure 1: Location of Mt Chalmers Project, tenure, geology & infrastructure.

¹ QMines Prospectus, Annexure A, Independent Geologist Report, pages 93-104. Exploration Targets are reported in accordance with the JORC 2012 Code & Guidelines. Note: The Potential quantity and grade of the Exploration Target described in this announcement is conceptual in nature. There has been insufficient exploration to estimate a Mineral Resource and it is uncertain if further exploration will result in the estimation of a Mineral Resource.

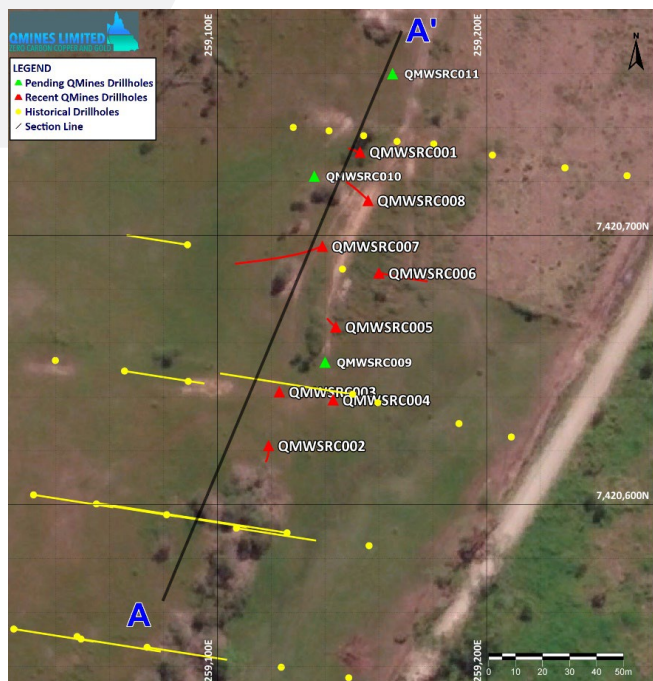


Figure 2: Woods Shaft RC drillhole collar locations from August-September drilling 2022.

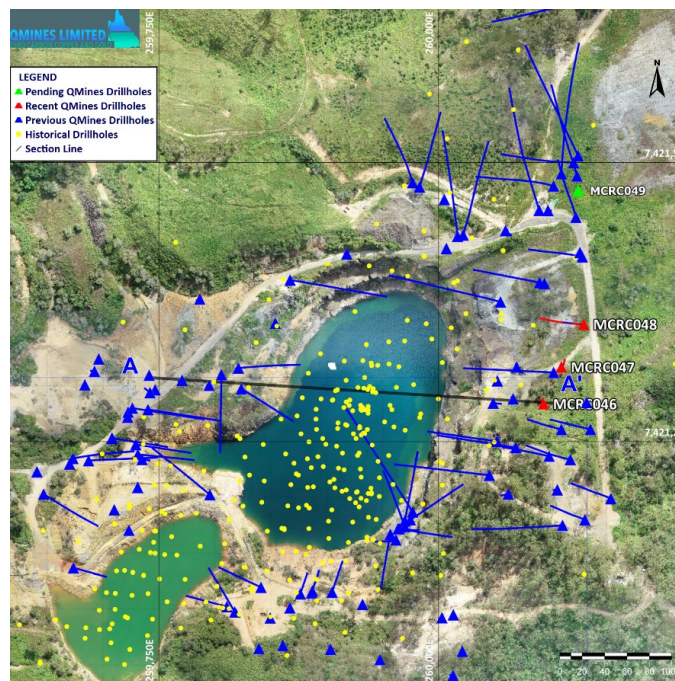


Figure 3: Mt Chalmers RC drill collar locations August-September drilling 2022.

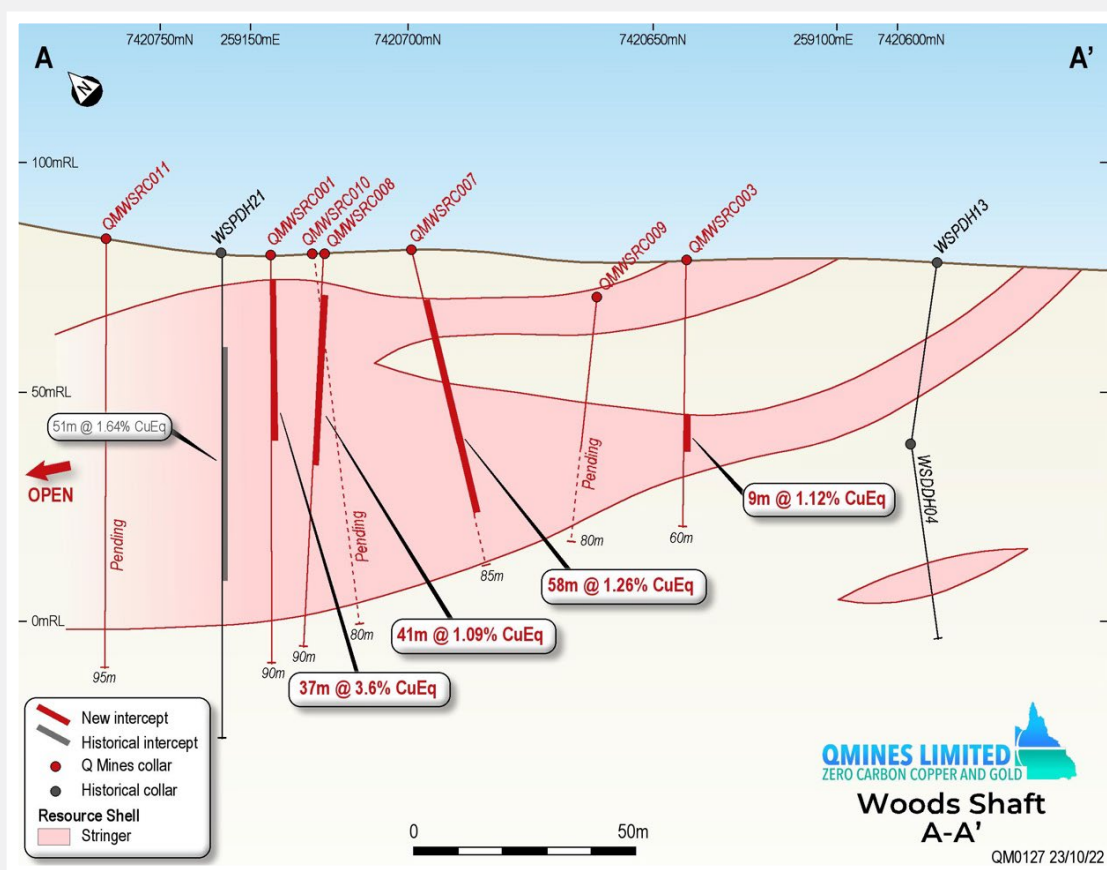


Figure 4: Section AA Woods Shaft drilling, August-September 2022.

The Woods Shaft drill program has delivered significant broad and high-grade intersections from within areas of poor drill coverage.

Details relating to the original Woods Shaft Exploration Target can be found in the Company's Prospectus, Independent Geologist Report, prepared by H&S Consultants Pty Ltd.¹

¹ <https://qmines.com.au/prospectus-2/>

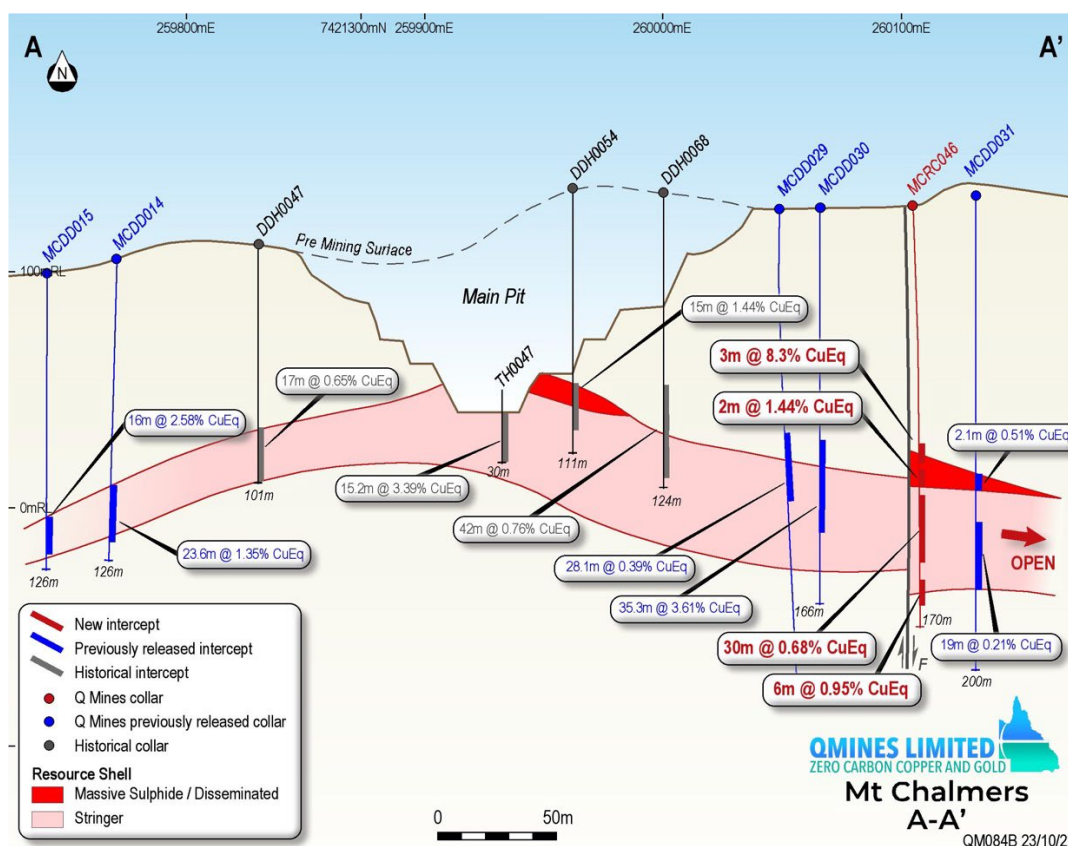


Figure 5: Section AA Mt Chalmers drilling, August-September 2022.

Mineral Resource Estimates¹

Second Resource:

In December 2021, QMines delivered its second Mineral Resource Estimate (MRE) for the Mt Chalmers Project. The MRE was delivered by independent resource consultants, Hyland Geological and Mining Services (HGMC).

Third Resource:

In preparation for the third MRE at Mt Chalmers, the Company has now completed over 14,000 meters of drilling, undertaken preliminary metallurgical test work and completed a detailed geological model for the project. The third MRE is expected to be completed in November 2022.

Fourth Resource:

QMines is working towards delivering a maiden MRE for the Woods Shaft deposit. Geological modelling has commenced. Estimation work is expected to commence on completion of the Mt Chalmers update, with delivery expected in Q1 2023.

The total number of diamond and percussion (RC) holes drilled at the Woods Shaft deposit available to be used in the MRE calculation can be seen in Table 1.

Project	Drilling Type	Holes	Metres	Tenement
Woods Shaft	Diamond	8	1,348	EPM 25935
Woods Shaft	Percussion/RC	52	4,933	EPM 25935
Total		60	6,281	

Table 1: Diamond and RC holes drilled Woods Shaft prospect to be used in MRE.

¹ The current resource upgrade for the Mt Chalmers Project is located on the QMines website at <https://wcsecure.weblink.com.au/pdf/QML/02460632.pdf>

Hole ID	MGA East*	MGA North*	mRL	Dip	MGA Azi*	Max Depth	From (m)	To (m)	Int (m)	Au (g/t)	Ag (g/t)	Cu (%)	Pb (%)	Zn (%)	CuEq (%)
MCRC046	260094	7421284	130	-90	360	170	75	78	3	1.61	195.0	4.70	0.63	0.15	8.33
and							85	87	2	0.67	15.1	0.30	0.38	0.8	1.42
and							112	156	44	0.07	1.7	0.66			0.71
including							121	129	8	0.14	3.0	0.97			1.08
MCRC047	260110	7421317	124	-90	360	185	114	116	2	1.00	50.0			0.2	1.31
and							160	169	9	0.10	6.0	0.34			0.46
and							178	181	3	0.15	10.1	3.20			3.31
MCRC048	260130	7421355	127	-80	270	195	175	179	4	0.07	1.8	0.99			1.03
QMWSRC001	259153	7420731	82	-90	360	90	4	41	37	3.14	7.4	0.82	0.14	0.3	3.60
including							12	21	9	5.94	9.8	1.1	0.23	0.3	6.21
including							30	34	4	7.38	11.6	1.77	0.22	0.9	8.26
and							67	71	4	0.13	3	0.29			0.41
QMWSRC002	259119	7420622	80	-85	170	75	11	22	11	0.14	1.3	0.1		0.7	0.51
and							50	56	6	0.68	3.3	0.19	0.12	0.7	1.07
QMWSRC003	259123	7420642	80	-90	360	60	35	44	9	1.06	2.6	0.24			1.12
QMWSRC004	259143	7420639	80	-90	360	80	8	24	16	0.19	2	0.15			0.32
and							68	70	2	0.36	9.2	0.39	0.22	0.3	0.96
QMWSRC005	259144	7420666	82	-90	360	75	53	55	2	1.35	3.3	0.65			1.76
QMWSRC006	259160	7420686	85	-80	100	95	37	42	5	0.5	1.5	0.21			0.63
and							61	66	5	0.28	1.5			0.2	0.31
QMWSRC007	259139	7420696	82	-73	245	85	15	73	58	0.92	3.8	0.49			1.26
including							38	48	10	3.77	14	2.12			5.26
QMWSRC008	259156	7420713	84	-90	360	90	15	56	41	0.7	3.8	0.44		0.1	1.09
including							33	38	5	3.5	5.5	0.44		0.2	3.41
and							73	84	11	0.46	3.3	0.23			0.63
QMWSRC009	259140	7420653	81	-60	300	80	Assays Pending								
QMWSRC010	259136	7420722	79	-80	240	80	Assays Pending								
QMWSRC011	259165	7420760	84	-90	360	95	Assays Pending								
MCRC049	260125	7421475	123.3	-90	360	180	Assays Pending								

Table 2: Woods Shaft and Mt Chalmers significant intersections October 2022.

Note: MGA 94_56

- In reported exploration results, length weighted averages are used for any non-uniform intersection sample lengths. Length weighted average is (sum product of interval x corresponding interval assay grade), divided by sum of interval lengths and rounded to two decimal points.
- No top cuts have been considered in reporting of grade results, nor was it deemed necessary for the reporting of significant intersections.
- No metal equivalent values have been reported.

Note: Downhole intersections contained in this announcement in the vertical drill holes reported, represent true widths of the assayed mineralised intersections contained in Table 2.

Note: Downhole intersections contained in the announcement in drill holes at ~60-degree dip, represent approximately 87% true width of the assayed mineralised intersections contained in Table 2.

What's Next?



Continued drilling operations at Mt Chalmers for the planned 30,000 meter RC and Diamond drilling programs;



Final drilling results from recent drilling operations at the Mt Chalmers and Woods Shaft deposits;



Regional airborne electromagnetic (EM) survey over the Mt Chalmers project to improve drill targeting for future drilling campaigns;



Deliver all new drillhole and geological modelling data to the independent resource geologist to commence the Mineral Resource Estimate(s);



Deliver a third Mineral Resource Estimate for Mt Chalmers in Q4-2022; and



Deliver a fourth Mineral Resource Estimate for Woods Shaft in Q1-2023.

Forward-Looking Statements

This document may include forward-looking statements. Forward-looking statements include, but are not limited to, statements concerning QMines Limited planned exploration program and other statements that are not historical facts. When used in this document, the words such as "could," "plan," "expect," "intend," "may", "potential," "should," and similar expressions are forward-looking statements. Although QMines believes that its expectations reflected in these forward- looking statements are reasonable, such statements involve risks and uncertainties and no assurance can be given that further exploration will result in the estimation of a further or larger Mineral Resource.

Competent Person Statement

The information in this document that relates to mineral exploration and exploration targets is based on work compiled under the supervision of Mr Glenn Whalan, a member of the Australian Institute of Geoscientists (AIG). Mr Whalan is QMines' principal geologist and has sufficient experience relevant to the style of mineralisation and type of deposit under consideration and to the activity that he is undertaking to qualify as a Competent Person as defined in the 2012 Edition of the 'Australasian Code for Reporting of Exploration Results, Mineral Resources and Ore Reserves' (JORC 2012 Mineral Code). Mr Whalan consents to the inclusion in this document of the exploration information in the form and context in which it appears.

About QMines

QMines Limited (**ASX:QML**) is a Queensland based copper and gold exploration and development company. The Company owns 100% of four advanced projects covering a total area of 1,096km². The Company's flagship project, Mt Chalmers, is located 17km North East of Rockhampton.

Mt Chalmers is a high-grade historic mine that produced 1.2Mt @ 2.0% Cu, 3.6g/t Au and 19g/t Ag between 1898-1982. Mt Chalmers has a Measured, Indicated and Inferred Resource (JORC 2012) of 5.8Mt @ 1.7% CuEq for 101,000t CuEq¹.

QMines' objective is to grow its Resource base, consolidate assets in the region and assess commercialisation options. The Company has commenced an aggressive exploration program (+30,000m) providing shareholders with significant leverage to a growing Resource and exploration success.

Projects & Ownership

Mt Chalmers (100%)

Silverwood (100%)

Warroo (100%)

Herries Range (100%)

QMines Limited

ACN 643 212 104

Directors & Management

ANDREW SPARKE

Executive Chairman

ELISSA HANSEN (Independent)

Non-Executive Director & Company Secretary

PETER CARISTO (Independent)

Non-Executive Director (Technical)

JAMES ANDERSON

General Manager Operations

GLENN WHALAN

Exploration Geologist
(Competent Person – Exploration)

Shares on Issue

127,102,744

Unlisted Options

7,950,000 (\$0.375 strike, 3 year term)

Compliance Statement

With reference to previously reported Exploration results and mineral resources, the Company confirms that it is not aware of any new information or data that materially affects the information included in the original market announcement and, in the case of estimates of Mineral Resources or Ore Reserves that all material assumptions and technical parameters underpinning the estimates in the relevant market announcement continue to apply and have not materially changed. The company confirms that the form and context in which the Competent Person's findings are presented have not been materially modified from the original market announcement.

This announcement has been approved and authorised by the Board of QMines Limited.

Contact

QMines Limited (ASX:QML)

Registered Address: Suite J, 34 Suakin Drive, Mosman NSW 2088

Postal Address: PO BOX 36, Mosman NSW 2088

Website: www.qmines.com.au

Telephone: +61 (2) 8915 6241

Peter Nesveda, Investor Relations

Andrew Sparke, Executive Chairman

Email: info@qmines.com.au

Email: peter@qmines.com.au

Email: andrew@qmines.com.au

¹ ASX Announcement - [Mt Chalmers Resource Upgrade](#), 1 December 2021.

JORC Code, 2012 Edition – Table 1 Mt Chalmers Mineral Resources

Section 1 Sampling Techniques and Data

(Criteria in this section apply to all succeeding sections.)

Criteria	JORC Code explanation	Commentary
Sampling techniques	<ul style="list-style-type: none"> <i>Nature and quality of sampling (e.g. cut channels, random chips, or specific specialised industry standard measurement tools appropriate to the minerals under investigation, such as down hole gamma sondes, or handheld XRF instruments, etc). These examples should not be taken as limiting the broad meaning of sampling.</i> <i>Include reference to measures taken to ensure sample representivity and the appropriate calibration of any measurement tools or systems used.</i> <i>Aspects of the determination of mineralisation that are Material to the Public Report.</i> <i>In cases where ‘industry standard’ work has been done this would be relatively simple (e.g. ‘reverse circulation drilling was used to obtain 1 m samples from which 3 kg was pulverised to produce a 30 g charge for fire assay’). In other cases, more explanation may be required, such as where there is coarse gold that has inherent sampling problems. Unusual commodities or mineralisation types (e.g. submarine nodules) may warrant disclosure of detailed information.</i> 	<ul style="list-style-type: none"> QMINES continued drilling operations at Mt Chalmers, drilling 15 reverse circulation percussion (RC) holes for 1,635 metres. This drilling included the Exploration Target Woods Shaft which is part of the Mt Chalmers Project. RC samples were collected at 1m intervals from an on-rig cyclone cone splitter with 2-3kg, or approximately 10% of the split sample saved in calico bags except for duplicate samples with each being 1-2kg, or approximately 5% of the total sample. During drilling, to avoid contamination, four individual calicos were placed in polyweave bags and sealed for delivery to the assay lab. Samples were sent by road to ALS Laboratories in Brisbane, crushed, pulverised and riffle split delivering 200g pulp for base metal and precious metal assay. Handheld portable XRF (pXRF) measurements of base metals i.e. Cu, Pb and Zn were taken of unsieved RC drilling material at appropriate horizons to check for fine grained disseminated base metal mineralisation. Anomalous readings resulted in these samples being submitted for conventional assay.
Drilling techniques	<ul style="list-style-type: none"> <i>Drill type (e.g. core, reverse circulation, open-hole hammer, rotary air blast, auger, Bangka, sonic, etc) and details (e.g. core diameter, triple or standard tube, depth of diamond tails, face-sampling bit or other type, whether core is oriented and if so, by what method, etc).</i> 	<ul style="list-style-type: none"> RC drilling was completed by the company’s KWLRC350 rig with booster and auxiliary compressor and using 5 m, 102 mm diameter RC rods and a 143 mm percussion face sampling hammer.

Criteria	JORC Code explanation	Commentary
Drill sample recovery	<ul style="list-style-type: none"> Method of recording and assessing core and chip sample recoveries and results assessed. Measures taken to maximise sample recovery and ensure representative nature of the samples. Whether a relationship exists between sample recovery and grade and whether sample bias may have occurred due to preferential loss/gain of fine/coarse material. 	<ul style="list-style-type: none"> Rock chips from each RC metre were collected in chip trays and logged. The majority (>95%) of RC samples were dry. Calico sample bags used in this program are of a sufficiently fine weave as to retain almost all of the sample fine fraction even when saturated. Drilling methods were consistent with current industry practices.
Logging	<ul style="list-style-type: none"> Whether core and chip samples have been geologically and geotechnically logged to a level of detail to support appropriate Mineral Resource estimation, mining studies and metallurgical studies. Whether logging is qualitative or quantitative in nature. Core (or costean, channel, etc) photography. The total length and percentage of the relevant intersections logged. 	<ul style="list-style-type: none"> All drilling was competently logged by Company geologists with all logging data digitised electronically into a Panasonic Toughbook. Logging codes were established prior to commencement of drilling operations by H & S Consultants and are a mixture of quantitative and qualitative data. Geological information consists of lithology descriptions, alteration, mineralisation, veining, weathering etc. All data is available in a digital format. All chip trays have been digitally photographed and stored in the Company NAS drive.
Sub-sampling techniques and sample preparation	<ul style="list-style-type: none"> If core, whether cut or sawn and whether quarter, half or all core taken. If non-core, whether riffled, tube sampled, rotary split, etc and whether sampled wet or dry. For all sample types, the nature, quality and appropriateness of the sample preparation technique. Quality control procedures adopted for all sub-sampling stages to maximise representivity of 	<ul style="list-style-type: none"> RC samples were collected from a cyclone with a cone splitter delivering 10% representative sampling per linear metre drilled. Duplicate samples were collected every 25 m and 75 m drilled in the drilling sequence with duplicate samples being a 50-50% split sample from the same cone splitter. ALS Laboratories dry the samples prior to crushing and pulverising. All sample material from each RC sample submission is crushed and pulverized to a nominal 90%

Criteria	JORC Code explanation	Commentary
	<p><i>samples.</i></p> <ul style="list-style-type: none"> <i>Measures taken to ensure that the sampling is representative of the in-situ material collected, including for instance results for field duplicate/second-half sampling.</i> <i>Whether sample sizes are appropriate to the grain size of the material being sampled.</i> 	<p>passing 75 µm giving a 200 g representative sample from which a sub-sample of 30 g is taken for base metal analysis and a 50 g charge for gold.</p>
Quality of assay data and laboratory tests	<ul style="list-style-type: none"> <i>The nature, quality and appropriateness of the assaying and laboratory procedures used and whether the technique is considered partial or total.</i> <i>For geophysical tools, spectrometers, handheld XRF instruments, etc, the parameters used in determining the analysis including instrument make and model, reading times, calibrations factors applied and their derivation, etc.</i> <i>Nature of quality control procedures adopted (e.g. standards, blanks, duplicates, external laboratory checks) and whether acceptable levels of accuracy (i.e. lack of bias) and precision have been established.</i> 	<ul style="list-style-type: none"> All samples for assay were submitted to ALS Laboratories in Brisbane. Ag, As, Ba, Cu, Pb, S and Zn were determined by ALS (ME-ICP61) using ICP-AES on a four-acid digest. Au was determined using ALS method AA25 (fire assay with AAS finish on a 30 g pulp). Sample preparation and base metal analysis was undertaken in Brisbane and Fire Assay undertaken by ALS in Townsville. The Company submits batches to ALS from drill programs as they come to hand. Reporting on QAQC results for all drillhole samples submitted between February 2021 and November 2021 has been undertaken by Lisa Orr of Orr and Associates, who found that QMines' QAQC is consistent with current industry practice for a drill program. Duplicate samples of cone splits are inserted at 50 m intervals and are utilised to monitor laboratory reproducibility. With coefficients of variation under 31% there is no significant bias in assayed results from duplicates assayed. Certified Reference Materials (CRM) are supplied by OREAS and GEOSTATS Pty Ltd and are inserted at 20 m intervals with suitable CRMs being used to monitor laboratory accuracy. With 252 out of 265 CRMs reporting within 3 standard deviations of certified values a success rate of 95.1% was achieved. Blank samples of barren gravel are inserted at 33 m intervals. Internal laboratory QAQC reports are delivered by ALS with certification of assay method used and certified

Criteria	JORC Code explanation	Commentary
		<p>assay results. These results are delivered to the principal geologist, database manager and the Company</p> <ul style="list-style-type: none"> A Thermo Scientific Niton XL3t handheld portable pXRF unit was used as a first pass check for fine grained disseminated base metal mineralisation in RC drilling material. Reading times were 20 seconds. The device has automatic calibration after switch on, and 4 CRM standards were also used to test for precision.
Verification of sampling and assaying	<ul style="list-style-type: none"> <i>The verification of significant intersections by either independent or alternative company personnel.</i> <i>The use of twinned holes.</i> <i>Documentation of primary data, data entry procedures, data verification, data storage (physical and electronic) protocols.</i> <i>Discuss any adjustment to assay data.</i> 	<ul style="list-style-type: none"> Since early 2021, all documentation and digitisation of data has been undertaken by the company database manager, Lisa Orr of Orr and Associates. The drill hole database is stored as an Access database and housed independently in an external NAS drive and backed up in a cloud storage system.
Location of data points	<ul style="list-style-type: none"> <i>Accuracy and quality of surveys used to locate drill holes (collar and down-hole surveys), trenches, mine workings and other locations used in Mineral Resource estimation.</i> <i>Specification of the grid system used.</i> <i>Quality and adequacy of topographic control.</i> 	<ul style="list-style-type: none"> QMiners has implemented a complete conversion by local mine surveyors of all historical drill collar surveys and local gridding utilised by previous explorers. The local work has been validated by MINECOMP Surveying. Conversion has been from local grids to GDA 94 MGA Zone 56. Some drill hole collars positions listed in this release were located by handheld GPS with accuracy of +/-3 m and these will be later picked up by and validated by the site surveyors. The Company has flown a Digital Terrain Model (DTM) using drone survey technology. The quality and accuracy of the DTM has been validated and processed independently of the data capture by MINECOP Surveying.
Data spacing and distribution	<ul style="list-style-type: none"> <i>Data spacing for reporting of Exploration Results.</i> <i>Whether the data spacing and distribution is sufficient to establish the degree of geological and grade continuity appropriate for the Mineral Resource and Ore Reserve estimation procedure(s) and classifications applied.</i> <i>Whether sample compositing has been applied.</i> 	<ul style="list-style-type: none"> The drill programs have been designed to validate historical drill hole data, expand the resource envelope and make new discoveries Line and drill hole spacing is not applicable No composite sampling has been applied

Criteria	JORC Code explanation	Commentary
Orientation of data in relation to geological structure	<ul style="list-style-type: none"> <i>Whether the orientation of sampling achieves unbiased sampling of possible structures and the extent to which this is known, considering the deposit type.</i> <i>If the relationship between the drilling orientation and the orientation of key mineralised structures is considered to have introduced a sampling bias, this should be assessed and reported if material.</i> 	<ul style="list-style-type: none"> The deposit is generally flat-lying and most drillholes are vertical to give an optimal intersection angle with mineralisation. Angled holes from the current program have been oriented to reach otherwise inaccessible targets. Downhole intersections contained in this announcement in drill holes at for example ~60-degree dip represent approximately 87% true width of the assayed mineralised intersections contained in Table 1 of this announcement. At Woods Shaft the geometry is more complex and true widths are less certain. There is no obvious sampling bias with the drilling orientation.
Sample security	<ul style="list-style-type: none"> <i>The measures taken to ensure sample security.</i> 	<ul style="list-style-type: none"> Samples were collected directly from the cone splitter into individual numbered calico sample bags, then 4 calico bags are inserted into polyweave bags, sealed and tied. Polyweave bags were numbered in sequence and placed in large bulka bags. The bulka bags were then delivered by Company staff to a commercial freight depot in Rockhampton and shipped directly to the ALS Laboratory in Brisbane overnight.
Audits or reviews	<ul style="list-style-type: none"> <i>The results of any audits or reviews of sampling techniques and data.</i> 	<ul style="list-style-type: none"> Sampling techniques were established by the Company geologist. Results were reviewed and validated by the Company database geology manager. Exploration results are not audited independently.

Section 2 Reporting of Exploration Results

(Criteria listed in the preceding section also apply to this section.)

Criteria	JORC Code explanation	Commentary
Mineral tenement and land tenure status	<ul style="list-style-type: none"> Type, reference name/number, location and ownership including agreements or material issues with third parties such as joint ventures, partnerships, overriding royalties, native title interests, historical sites, wilderness or national park and environmental settings. The security of the tenure held at the time of reporting along with any known impediments to obtaining a licence to operate in the area. 	<ul style="list-style-type: none"> QMiners Pty Ltd has two 100% owned subsidiaries, Dynasty Gold Pty Ltd and Rocky Copper Pty Ltd, through which the Company has a 100% beneficial interest in the Mt Chalmers Project. The Mt Chalmers Project is held in EPM 25935 and EPM 27428 located 25 kilometres east of the City of Rockhampton in coastal central Queensland, Australia. The project covers an area of historic gold and copper mining, which comprises an area of 198 km². The Project is free and unencumbered by either joint ventures or any other equity participation of the tenement. QMiners has yet to negotiate any landowner provisions or Government royalties or yet to commence environmental studies within the project area. Currently the Queensland Department of Natural Resources & Mines is conducting remediation works on minor acid mine waste draining from a mineralised mullock dump. All the tenements are for “all minerals” excepting coal. Note that the granted tenements allow QMiners to carry out many of their planned drilling programs under relevant access procedures applying to each tenement. All the EPMs are subject to the Native Title Protection Conditions with respect to Native Title. Declared Irrigation Areas, Declared Catchment Areas, Declared Drainage Areas, Fossicking Areas and State Forest are all land classifications that restrict exploration activity. These do not affect QMiners’ main prospects but may have impacts on regional programs in places. All annual rents and expenditure conditions have been paid and QMiners has been fully compliant.
Exploration done by other parties	<ul style="list-style-type: none"> Acknowledgment and appraisal of exploration by other parties. 	<ul style="list-style-type: none"> INAL, CEC and Geopeko were generally recognized as highly competent exploration companies that used appropriate techniques for the time. Written logs and hardcopy sections of their work are considered good.

Criteria	JORC Code explanation	Commentary
		<ul style="list-style-type: none"> Federation was a small explorer that was entirely focused on defining the Mt Chalmers resource. They used a very competent geologist, Alex Taube, for the drilling program. Alex Taube is widely respected for his knowledge about VHMS deposits in North Queensland.
Geology	<ul style="list-style-type: none"> <i>Deposit type, geological setting and style of mineralisation.</i> 	<ul style="list-style-type: none"> The Mt Chalmers mineralization is situated in the early Permian Berserker Beds, which occur in the fault-bounded Berserker Graben, a structure 120 km long and up to 15 km wide. The graben is juxtaposed along its eastern margin with the Tungamull Fault and in the west, with the Parkhurst Fault. The Berserker Beds consist mainly of acid to intermediate volcanics, tuffaceous sandstone and mudstone (Kirkegaard and Murray 1970). The strata are generally flat lying, but locally folded. Most common are rhyolitic and andesitic lavas, ignimbrites or ash flow tuffs with numerous breccia zones. Rocks of the Berserker Beds are weakly metamorphosed and, for the most part, have not been subjected to major tectonic disturbance, except for normal faults that are interpreted to have developed during and after basin formation. Late Permian to early Triassic gabbroic and dioritic intrusions occur parallel to the Parkhurst Fault. Smaller dolerite sills and dykes are common throughout the region and the Berserker Beds. Researchers have shown that the Mt Chalmers mineralization is a well-preserved, volcanic-hosted massive-sulphide ("VHMS – Kuroko style") mineralized system containing zinc, copper, lead, gold and silver. Mineral deposits of this type are syngenetic and formed contemporaneously on, or in close proximity to, the sea floor during the deposition of the host-rock units deposited from hydrothermal fumaroles, direct chemical sediments or replacements (massive sulphides), together with disseminated and stringer zones within these host rocks.

Criteria	JORC Code explanation	Commentary
		<ul style="list-style-type: none"> • The oldest rocks in the area, the 'footwall sequence' of pyritic tuffs, are seen only in the Mt Chalmers open pit and in drill holes away from the mine. The rock is usually a light coloured eutaxitic tuff with coarse fragments, mainly of chert, porphyritic volcanics and chloritic fiamme (fiamme are aligned, "flame-like" lenses found in welded ignimbrite) and other pyroclastic rocks and indicate subaerial deposition. Eutaxitic texture, the layered or banded texture in this unit, is commonly caused by the compaction and flattening of glass shards and pumice fragments around undeformed crystals). The alteration (silicification, sericitization and pyritization) of this basal unit becomes more intense close to mineralization. • The 'mineralized sequence' overlying the 'footwall sequence' consists mainly of tuffs, siltstones and shales and contains stratiform massive sulphide mineralization and associated exhalites: thin barite beds, chert and occasionally jasper, hematitic shale and thin layers of bedded disseminated sulphides. Dolomite has been recorded in the mineralized sequence close to massive sulphides. This sequence represents a hiatus in volcanic activity and a period of water-lain deposition. • The 'hanging wall sequence' is a complex bedded series of unaltered crystal and lithic rhyolitic tuffs and sediments with breccia zones and occasional chert and jasper. • A mainly conformable body of andesite, ranging from 10 m to 250 m thick, intrudes the sequence; it usually occurs just above the 'mineralized sequence'. A quartz-feldspar porphyry body intrudes the volcanic sequence and in places intrudes the andesite. • The rocks in the mine area are gently dipping, about 20° to the north in the Main Lode mine area and similarly dipping south at the West Lode: the predominant structure is a broad anticline trending north-north-east. Slaty cleavage is strongly developed in some of the rocks, notably in

Criteria	JORC Code explanation	Commentary
		<p>sediments and along fold axes. Such cleavage is prominent in areas close to the mineralization.</p> <ul style="list-style-type: none"> • Doming of the rocks close to the mineralization has been interpreted by detailed work in the open cut to be largely due to localized horst block-faulting (Taube 1990), but the doming might also be a primary feature in part. Steep dips are localized and usually the result of block faulting. The Main Lode outcrop and West Lode outcrop are variably silicified rocks which, by one interpretation, may have been pushed up through overlying rocks in the manner of a Mont Pelée spine (Taube 1990), but in any case, form a dome of rhyolite / high level intrusions of the Ellrott Rhyolite. The surrounding mineralized horizon is draped upon the flanks of domal structures and dissected by at least three major faults. • At Woods Shaft sulfide stringer mineralization is the main mineralization style with massive sulfides not detected to date. Hosted by volcanics of the Berserker Beds, the geology is similar to that of Mt Chalmers but with greater siltstone thicknesses suggesting more distal deposition under lower energy conditions. The sulfide stringer zone at Woods Shaft is largely restricted to siliceous pyroclastics underlying this siltstone. As such, a similar temporal and spatial mineralizing event to that of Mt Chalmers is recognized. • The geometry of the Woods Shaft mineralization is so far less clear than at Mt Chalmers due to less drillhole data. Surface mapping and drill data suggest a mineralized dome structure which has been slightly modified by folding to produce a north-south trending anticline (dome) with a mineralized core. It is envisaged that this dome has formed similarly to the domal uplift at the core of the Mt Chalmers mineral system.
Drill hole Information	<ul style="list-style-type: none"> • A summary of all information material to the understanding of the exploration results including a 	<ul style="list-style-type: none"> • Exploration Results are reported in the body of the relevant announcements in Table 1.

Criteria	JORC Code explanation	Commentary
	<p>tabulation of the following information for all Material drill holes:</p> <ul style="list-style-type: none"> o easting and northing of the drill hole collar o elevation or RL (Reduced Level – elevation above sea level in metres) of the drill hole collar o dip and azimuth of the hole o down hole length and interception depth o hole length. <ul style="list-style-type: none"> • If the exclusion of this information is justified on the basis that the information is not Material and this exclusion does not detract from the understanding of the report, the Competent Person should clearly explain why this is the case. 	
Data aggregation methods	<ul style="list-style-type: none"> • In reporting Exploration Results, weighting averaging techniques, maximum and/or minimum grade truncations (e.g. cutting of high grades) and cut-off grades are usually Material and should be stated. • Where aggregate intercepts incorporate short lengths of high grade results and longer lengths of low grade results, the procedure used for such aggregation should be stated and some typical examples of such aggregations should be shown in detail. • The assumptions used for any reporting of metal equivalent values should be clearly stated. 	<ul style="list-style-type: none"> • In reported exploration results, length weighted averages are used for any non-uniform intersection sample lengths. Length weighted average is (sum product of interval x corresponding interval assay grade), divided by sum of interval lengths and rounded to two decimal points. • No top cuts have been considered in reporting of grade results, nor was it deemed necessary for the reporting of significant intersections. • All Copper Equivalent (CuEq) figures included in this announcement are calculated based on the following formula: $CuEq(\%) = (Cu \text{ grade} \times Cu \text{ recovery}) + ((Pb \text{ grade} \times Pb \text{ recovery} \times Pb \text{ price}) / Cu \text{ Price}) + (Zn \text{ grade} \times Zn \text{ price} \times Zn \text{ recovery}) / Cu \text{ price} + ((Au \text{ grade} \times Au \text{ price} \times Au \text{ recovery}) / Cu \text{ price}) + ((Ag \text{ grade} \times Ag \text{ price} \times Ag \text{ recovery}) / Cu \text{ price})$. All grades are converted to % and prices converted to \$/T prior to calculating CuEq. Commodity price used: Au price of US\$1,900/oz, Ag price of US\$25/oz, Cu price of US\$6,655/t, Pb price of US\$2,450/t, and Zn price of US\$3,450/t. The following metallurgical recoveries have been applied: 87% Au, 70.5% Ag, 97.0% Cu, 85.0% Pb and 77.0% Zn. • Mt Chalmers VHMS is a polymetallic base and precious metal mineral system, cut off grades used by the Company in calculating reported mineralized intersections are 0.2%

Criteria	JORC Code explanation	Commentary
		<p>Cu, 0.1 ppm Au and 1 ppm Ag, 0.2% Zn and 0.2% Pb.</p> <ul style="list-style-type: none"> • Metal Price Assumptions and Recovery data used in calculating the Copper Equivalent has been reported to the market in December 2021 and is contained in the Mt Chalmers Resource Upgrade Report and can be seen on the Company Website; https://wcsecure.weblink.com.au/pdf/QML/02460632.pdf
Relationship between mineralisation widths and intercept lengths	<ul style="list-style-type: none"> • These relationships are particularly important in the reporting of Exploration Results. • If the geometry of the mineralisation with respect to the drill hole angle is known, its nature should be reported. • If it is not known and only the down hole lengths are reported, there should be a clear statement to this effect (e.g. 'down hole length, true width not known'). 	<ul style="list-style-type: none"> • At Mt Chalmers, the drilling has generally intersected the mineralization at high angles. • The majority of holes drilled at Mt Chalmers Copper Project are vertical in nature. • Holes drilled on other dips are reported in the Significant Intercepts table. True widths in e.g. 60-degree dipping holes are not reported. True width at 60 degrees is approximately 87% of the down hole intersection.
Diagrams	<ul style="list-style-type: none"> • Appropriate maps and sections (with scales) and tabulations of intercepts should be included for any significant discovery being reported. These should include, but not be limited to a plan view of drill hole collar locations and appropriate sectional views. 	<ul style="list-style-type: none"> • Maps, sections, mineralized intersections, plans and drill collar locations are included in the body of the relevant announcement.
Balanced reporting	<ul style="list-style-type: none"> • Where comprehensive reporting of all Exploration Results is not practicable, representative reporting of both low and high grades and/or widths should be practiced to avoid misleading reporting of Exploration Results. 	<ul style="list-style-type: none"> • Table 1 in the body of the announcement
Other substantive exploration data	<ul style="list-style-type: none"> • Other exploration data, if meaningful and material, should be reported including (but not limited to): geological observations; geophysical survey results; geochemical survey results; bulk samples – size and method of treatment; metallurgical test results; bulk density, groundwater, geotechnical and rock characteristics; potential deleterious or contaminating substances. 	<ul style="list-style-type: none"> • CEC and Geopeko completed some brownfields exploration to assist with defining the resource including Induced Polarization surveys and Sirotem (electromagnetic method) surveys. • Federation concentrated on defining the resource estimates. • INAL completed greenfields exploration in the 1960's and 1970's. Exploration included geological mapping, soil and rock chip sampling, costeaning and rotary percussion

Criteria	JORC Code explanation	Commentary
		drilling. <ul style="list-style-type: none"> In 2021 QMines digitized the results of soil geochemical grids obtained from the Geological Survey of Queensland consisting of 19,000 samples collected by various workers for its use in ongoing target generation. Mitre Geophysics Pty Ltd completed a downhole EM survey in June 2022, results of which are described in the body of the announcement including a link to the relevant report. No other exploration data is considered meaningful at this stage.
Further work	<ul style="list-style-type: none"> <i>The nature and scale of planned further work (e.g. tests for lateral extensions or depth extensions or large-scale step-out drilling).</i> <i>Diagrams clearly highlighting the areas of possible extensions, including the main geological interpretations and future drilling areas, provided this information is not commercially sensitive.</i> 	<ul style="list-style-type: none"> Infill and resource expansion drilling is being undertaken to upgrade and potentially expand the current resource estimates. Additional Downhole EM survey work is planned. Infill soil geochemical sampling is planned.