

Petratherm Limited

ASX: PTR



AGM Presentation

Peter Reid – Exploration Manager

29 November 2018

About Petratherm

ASX Listing - April 2018 | Mineral Explorer | Highly experienced technical and corporate team

Shares On Issue: 171M | Options (unlisted): 14.9M

Market Cap (@0.031) : \$5.3M | Cash (end Sept 18 QTR): \$4.4M | EV: \$0.9M

Shareholders: 3,145 | Top 20 Holders 32.09%, Directors and Management 2.6%



Petratherm – A Nimble Explorer !

Current Exploration Projects

Corunna (SA) - silver-lead-zinc & nickel

Walparuta (SA) - copper-gold and silver-lead-zinc

Emerging Opportunities

Yuengroon (Vic) - gold

Actively seeking other projects with high growth potential.



“focus is on new high growth opportunities”

Experienced technical and corporate team

Mr Derek Carter – Non-Executive Chairman (BSc, MSc, FAusIMM (CP))

Over 40 years' experience in exploration and mining geology and management. He held senior positions in the Shell Group of Companies and Burmine Ltd before founding Minotaur Gold NL in 1993. He is the Chairman of Highfield Resources Ltd, former Chairman of Minotaur Exploration Ltd, and a former board member of Intrepid Mines Ltd and Mithril Resources Ltd, all ASX listed companies.

Mr Donald Stephens – Non-Executive Director and Company Secretary (BA (Acc.), FCA)

Mr Stephens is a Chartered Accountant and corporate advisor with over 25 years' experience in the accounting, mining and services industries, including 14 years as partner of HLB Mann Judd (SA), a firm of Chartered Accountants.

Mr Simon O'Loughlin – Non-Executive Director (BA (Acc.), Law Society Certificate in Law)

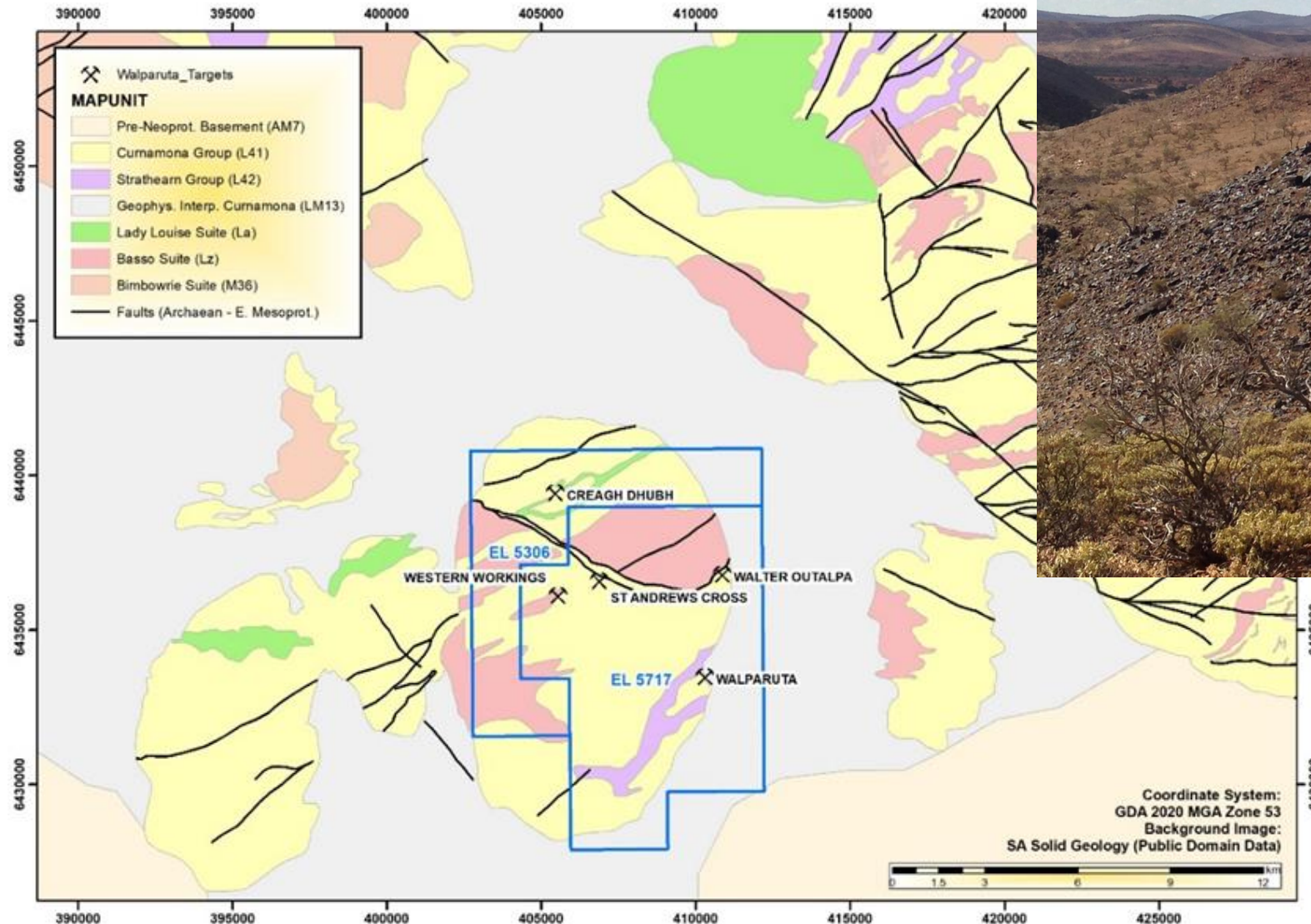
Mr O'Loughlin is the founder of O'Loughlin's Lawyers, an Adelaide based, specialist commercial law firm. He has extensive experience in the corporate and commercial law fields while practising in Sydney and Adelaide, and also holds accounting qualifications.

Mr Peter Reid – Exploration Manager (BSc Hons, MAIG)

Mr Reid is an exploration geologist with 25 years' experience. He has held senior roles with several ASX junior exploration companies and was one of the founders of Petratherm Limited, a specialist engineered geothermal explorer and developer.



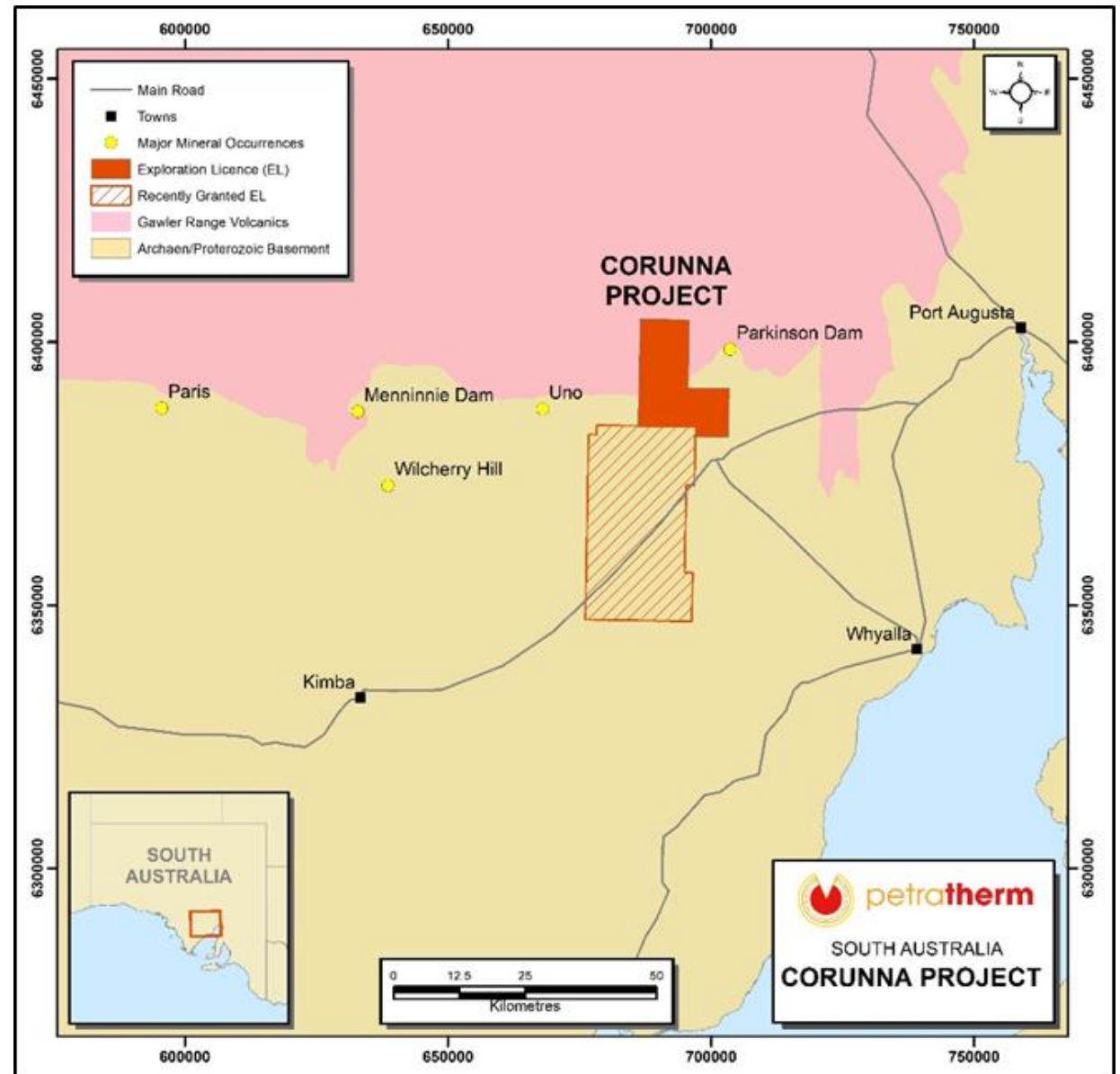
Walparuta Project - solid geology, tenements and prospect locations



Creagh Dhubh Prospect
Outcropping mangiferous exhalite,
anomalous Cu-Zn-Co-Ag-Au

Corunna Project

- May earn up to 75% interest from Musgrave Minerals Ltd.
- Sept 2018 – Completed an 42 Air core drill hole program over the silver-lead-zinc and magnetic targets at the Area 1 Prospect.
- Gilles Downs (700 km²) tenement granted

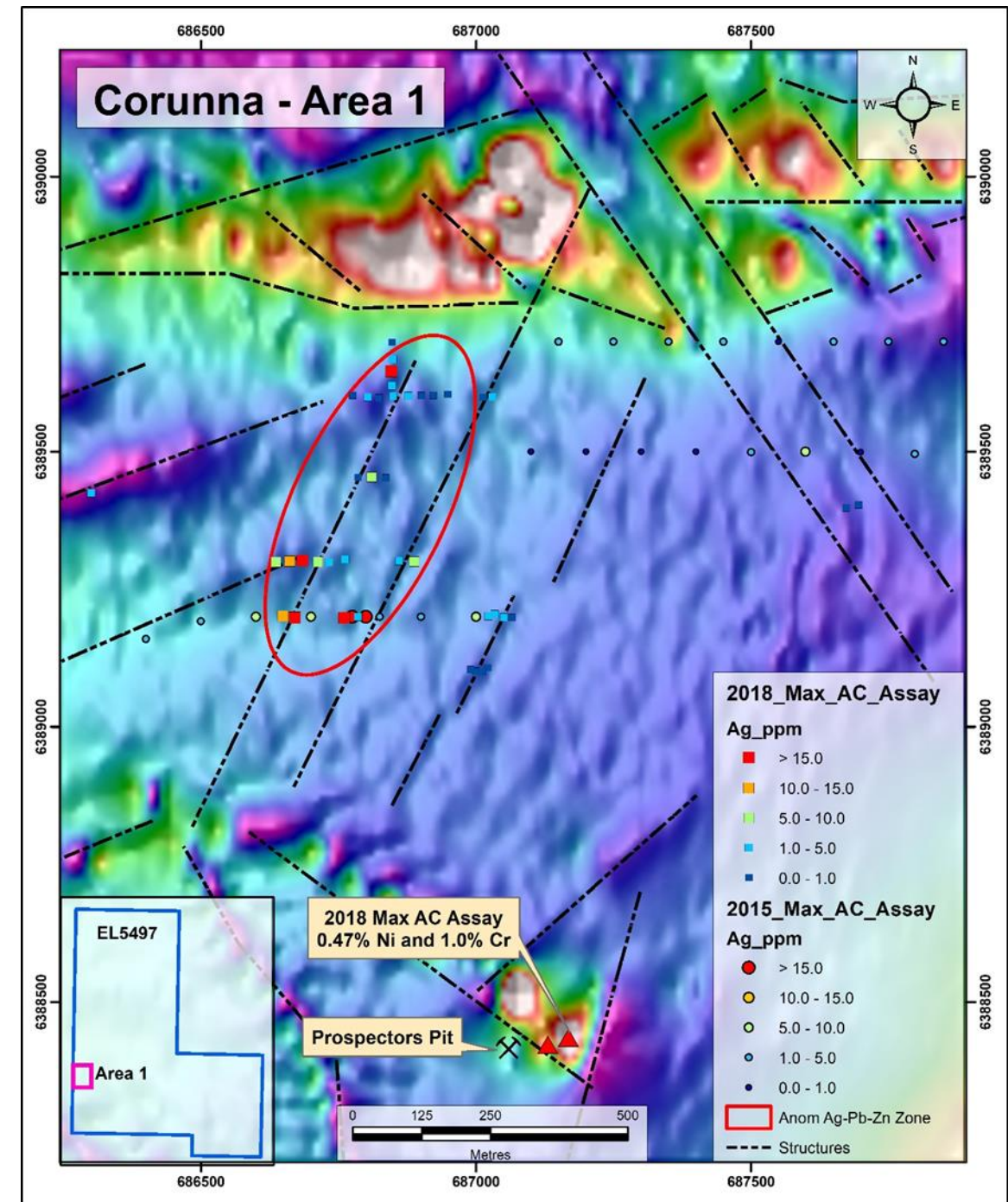


Drilling Extends – Ag-Pb-Zn

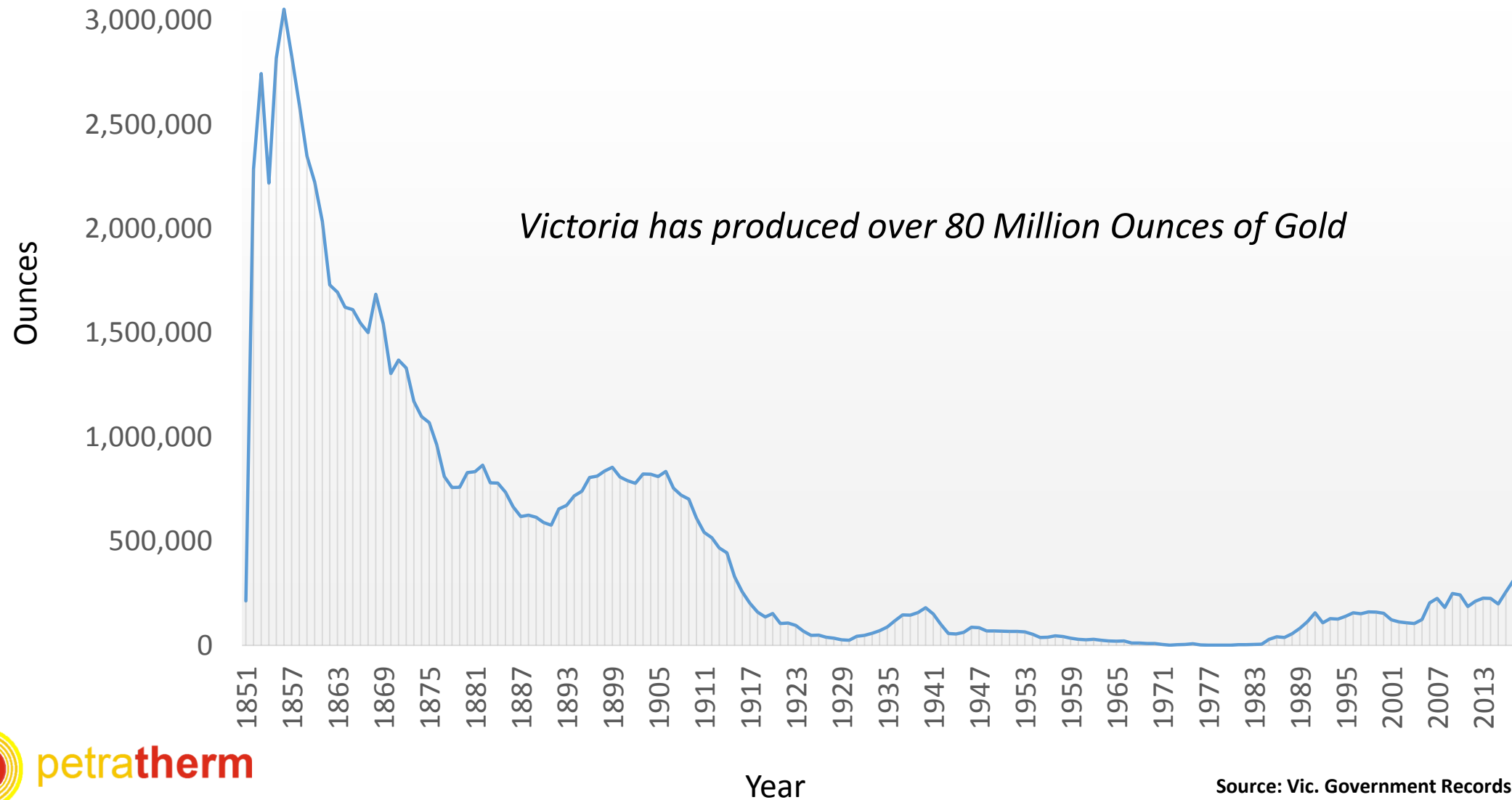
- 12m @ 20.0g/t Ag, 0.8% Pb and 0.2% Zn from 20m (CO18AC10)
- 4m @ 13.0g/t Ag, 0.6% Pb and 0.3% Zn from 32m (CO18AC11)
- 20m @ 12.0g/t Ag, 0.3% Pb and 0.2% Zn from 12m (CO18AC12)
- 12m @ 9.0g/t Ag, 0.5% Pb and 0.3% Zn from 20m (CO18AC17)
- 12m @ 16.0g/t Ag, 0.03% Pb and 0.05% Zn from 0m (CO18AC29)
- 8m @ 13.0g/t Ag, 0.1% Pb and 0.06% Zn from 16m (CO18AC40)
- 8m @ 16.5g/t Ag, 0.07% Pb and 0.3% Zn from 36m (CO18AC40)

Anomalous nickel-chromium-cobalt identified adjacent historic prospector's pit.

- 16m @ 0.3% Ni, 0.2% Cr and 0.01% Co from 8m (CO18RC38)
- 12m @ 0.4% Ni, 0.7% Cr and 0.01% Co from 4m (CO18RC42)



Victorian Gold Production 1851 - 2017





State of Play – Victorian Gold Exploration

LEGEND

Petratherm

Navarre Minerals

ECR Minerals

Lion Gold

Chalice Gold

Catalyst Metals

Providence

GBM Gold

Kirkland Lake

Mandalay

Newmont

Other

•

 Gold town & production

—

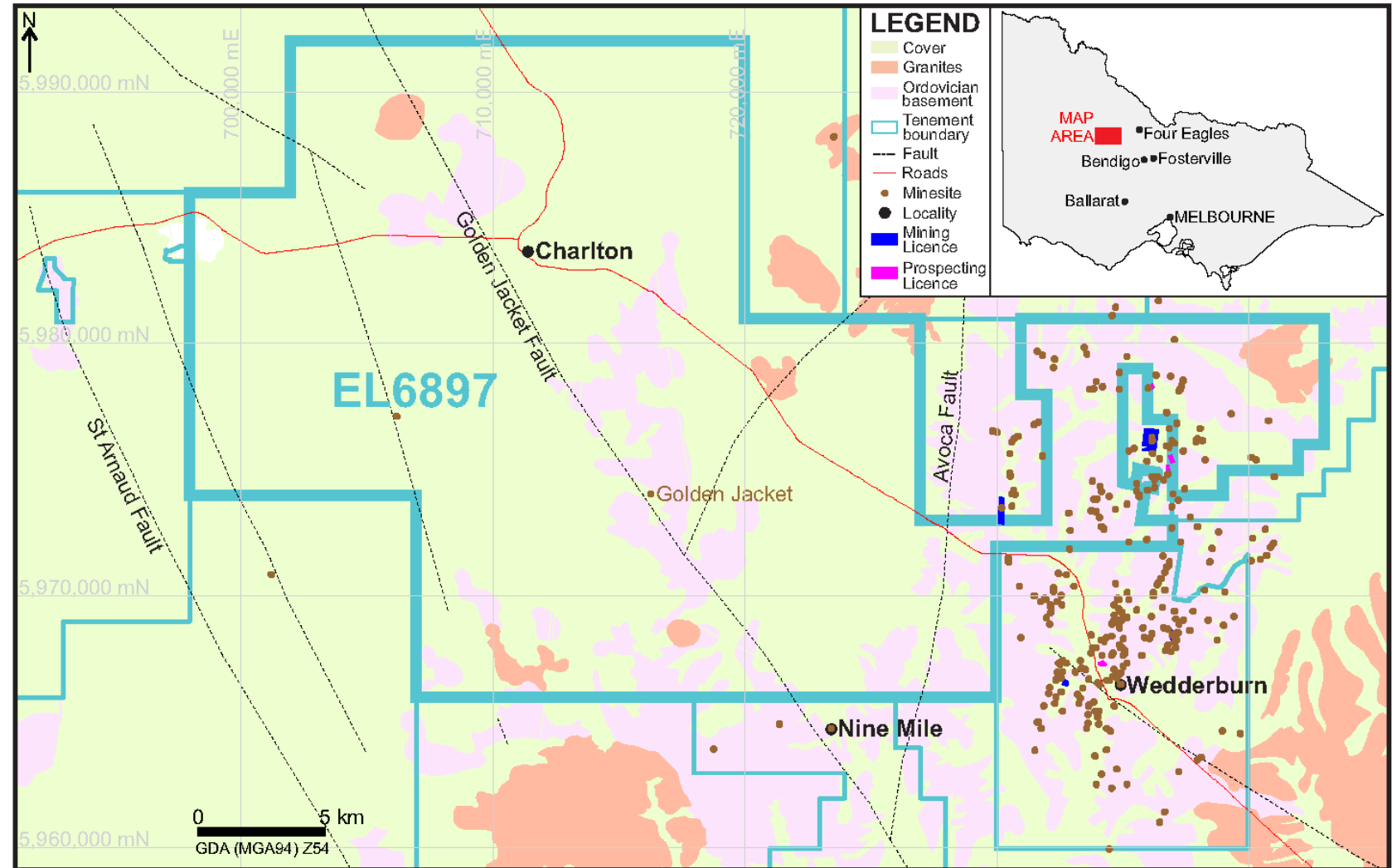
 Fault line

Cover



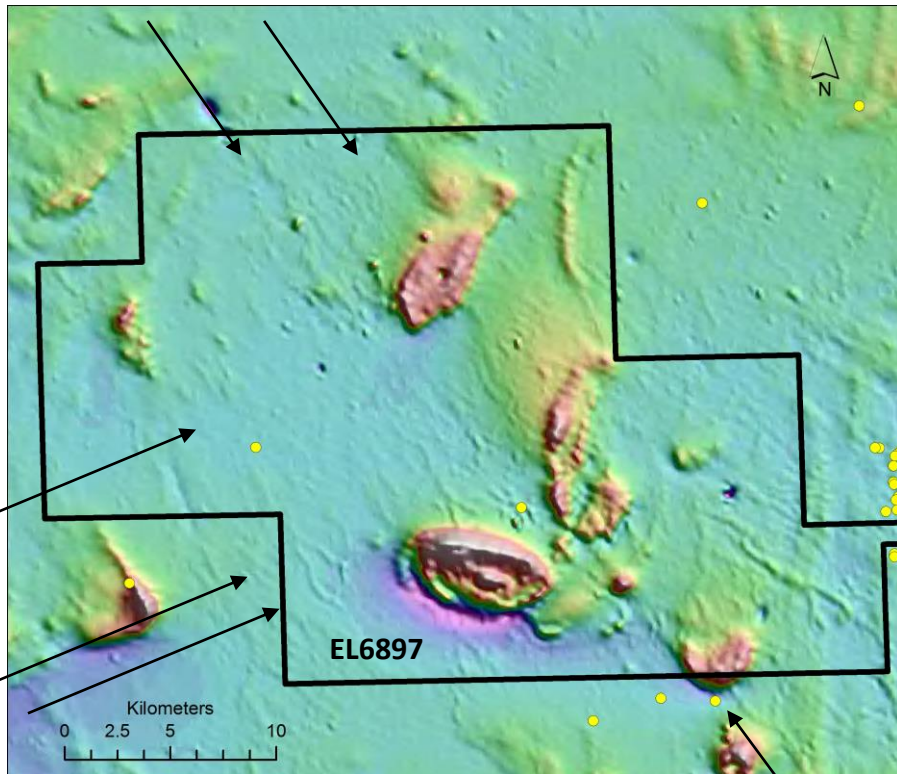
Yuengroon Project

- Large 687 km² area
- Covers a portion of the Wedderburn Goldfield (140,000 Oz recorded production)
- Prospective fault structures
- Shallow cover



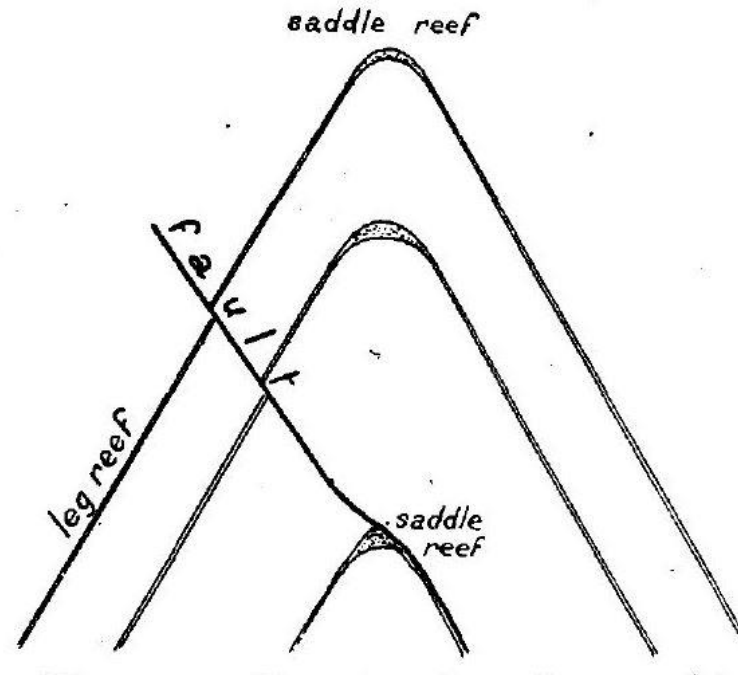
Faults Control Gold Mineralisation

Gravity and Magnetic data has been used successfully to locate faults under cover



Euengroon Tenement outline and historic gold mines overlain on magnetic image. Arrows highlight interpreted faults

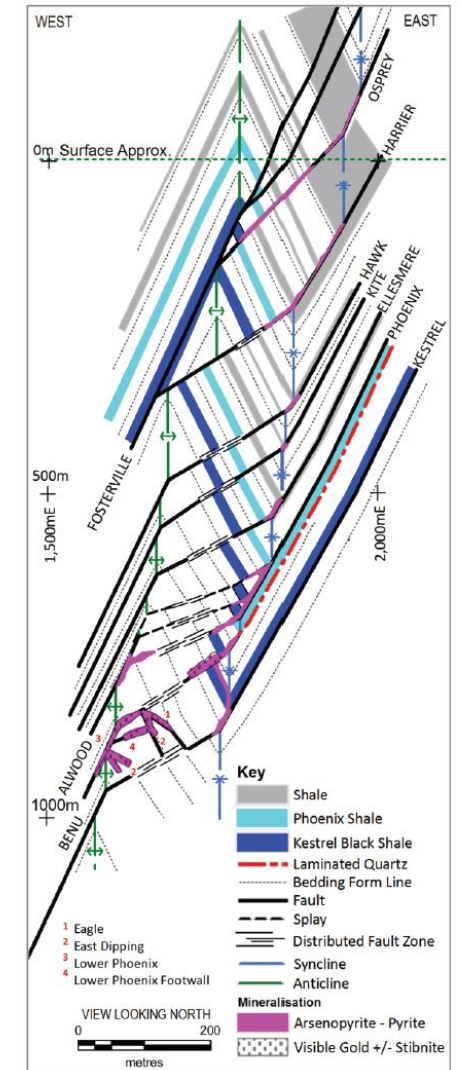
Bendigo



Source: Stillwell (1918)



Fosterville



Source: Hitchman et al (2017)

JORC Information and Competent Person Statement

JORC Information:

Further details (Including JORC 2012 Code Reporting Tables, where applicable) for the information included in this Presentation can be found in the following Petratherm Limited announcements previously lodged with the ASX:

- Petratherm Secures Position in Highly Prospective Bendigo Gold Zone – 22 November 2018
- Drilling Extends Silver, Lead and Zinc Mineralisation and Identifies New Nickel Prospective Zone - 24 October 2018
- Replacement Prospectus - 16 April 2018

Competent Persons Statement:

The information in this report that relates to Exploration Targets and Exploration Results is based on information compiled by Mr Peter Reid, who is a Competent Person, and a Member of the Australian Institute of Geoscientists. Mr Reid is not aware of any new information or data that materially affects the historical exploration results included in this report. Mr Reid is an employee of Petratherm Ltd. Mr Reid has sufficient experience that is relevant to the style of mineralisation and type of deposit under consideration and to the activity being undertaken to qualify as a Competent Person as defined in the 2012 Edition of the 'Australasian Code for Reporting of Exploration Results, Mineral Resources and Ore Reserves'. Mr Reid consents to the inclusion in the report of the matters based on his information in the form and context in which it appears.

Disclaimer

This presentation has been prepared by Petratherm Limited (Petratherm). The information contained in this presentation is a professional opinion only and is given in good faith. Certain information in this document has been derived from third parties and though Petratherm has no reason to believe that it is not accurate, reliable or complete, it may not have been independently audited or verified by Petratherm.

Any forward-looking statements included in this document involve subjective judgment and analysis and are subject to uncertainties, risks and contingencies, many of which are outside the control of, and maybe unknown to, Petratherm. In particular, they speak only as of the date of this document, they assume the success of Petratherm's strategies and they are subject to significant regulatory, business, competitive and economic uncertainties and risks. Actual future events may vary materially from the forward looking statements and the assumptions on which the forward looking statements are based. Recipients of this document ("Recipients") are cautioned not to place undue reliance on such forward-looking statements.

Petratherm makes no representation or warranty as to the accuracy, reliability or completeness of information in this document and does not take responsibility for updating any information or correcting any error or omission which may become apparent after this document has been issued.

To the extent permitted by law, Petratherm and its officers, employees, related bodies corporate and agents ("Agents") disclaim all liability, direct, indirect or consequential (and whether or not arising out of the negligence, default or lack of care of Petratherm and/or any of its Agents) for any loss or damage suffered by a Recipient or other persons arising out of, or in connection with, any use or reliance on this presentation or information. All amounts in Australian dollars (AUD) unless stated otherwise.