

Multiple High-Grade Gallium Results at Saltwater Project

Highlights

- High-grade gallium assay results received from ongoing soil and rock chip sampling programs at the Saltwater Project in the Pilbara region of Western Australia
- The two gallium in soil anomalies identified are also defined as geophysical anomalies
 - The Talmine Prospect returned a total of 16 samples graded higher than 24g/t Ga₂O₃, including 136.05g/t Ga₂O₃, 60.87g/t Ga₂O₃ and 39.29g/t Ga₂O₃
 - Soil anomaly is coincident with a prominent magnetic and EM anomaly
 - The Terceira Prospect is a 300m strike x 60m wide gold anomaly, coincident with a 700m strike x 120m wide arsenic and gallium anomaly
 - This soil anomaly is also coincident with an airborne magnetic anomaly
- The Terceira Prospect has generated a drill-ready target with first pass drilling planned to commence on receipt of all approvals

Aruma Resources Limited (ASX: AAJ) (Aruma or the Company) is pleased to announce multiple high-grade gallium assay results at the Talmine Prospect and an associated gold-arsenic-gallium soil anomaly at the Terceira Prospect, from its sampling programs at the Saltwater Project in the Pilbara region of Western Australia.

Aruma collected a total of 879 soil samples over an area of approximately 14km² at the priority Terceira, Talmine and Oracle Prospects in the latest phase of its comprehensive ongoing geochemical survey program at the Saltwater Project (Figure 1). Results continue to enhance the multi-commodity potential of the Project. A consolidation of rock chip assays from 2023 further supports the developing geological model.

Very high-grade gallium (Ga₂O₃ – Gallium Oxide) assay results have been identified at the Talmine Prospect, with results including; **136.05g/t Ga₂O₃** in AR14023, **60.87g/t Ga₂O₃** in AR14020 and **39.29g/t Ga₂O₃** in SWS0929. A total of **16 samples graded higher than 24g/t Ga₂O₃** with highlight results including;

- 136.05g/t Ga₂O₃: AR14023*
- 60.87g/t Ga₂O₃: AR14020*

Aruma Resources Ltd

ACN 141 335 364
ASX: **AAJ**

Issued Capital

222,058,172 Shares
54,930,003 Listed options
68,500,000 Unlisted options

Business Office

1st Floor, 2 Richardson Street
West Perth WA 6005
T: + 61 8 9321 0177
E: info@arumaresources.com

Board and Management

JAMES MOSES – Non-Executive Chairman
GRANT FERGUSON – Managing Director
BRETT SMITH – Non-Executive Director

- 39.29g/t Ga₂O₃: SWS0929
- 35.18g/t Ga₂O₃: SWS0903
- 34.80g/t Ga₂O₃: SWS0925
- 34.16g/t Ga₂O₃: AR14024*
- 32.81g/t Ga₂O₃: SWS0904

*Rock chip samples announced 18 October 2023 – “Exploration Continues to Enhance Multi-Commodity Potential at Saltwater Project”. All other results are soil samples.

See Table 1 for highlight gallium results and Table 2 for details of all sample results.

In addition, the latest sampling program returned anomalous gold-arsenic results and provided a first drill-ready target at the Terceira Prospect. An initial aircore drilling campaign is currently being designed, with drilling planned to commence on receipt on requisite approvals.

Aruma Resources managing director Grant Ferguson said:

“Our latest phase of sampling has continued to deliver positive results and enhance the multi-commodity potential of the Saltwater Project. The identification of high-grade gallium, a high value-high demand critical mineral, at the Talmine Prospect will be followed up in our next phase of field work, as we seek to develop a comprehensive geological model for the Saltwater Project. At the Terceira Prospect our systematic approach has delivered an exciting well-supported drill-ready target, which is highly encouraging given the early stage of our exploration at the Saltwater Project. The results of field work have also provided strong support for our hypothesis for the potential for epithermal gold mineralisation and base metal mineralisation across the 67km length of the Saltwater Project area.”

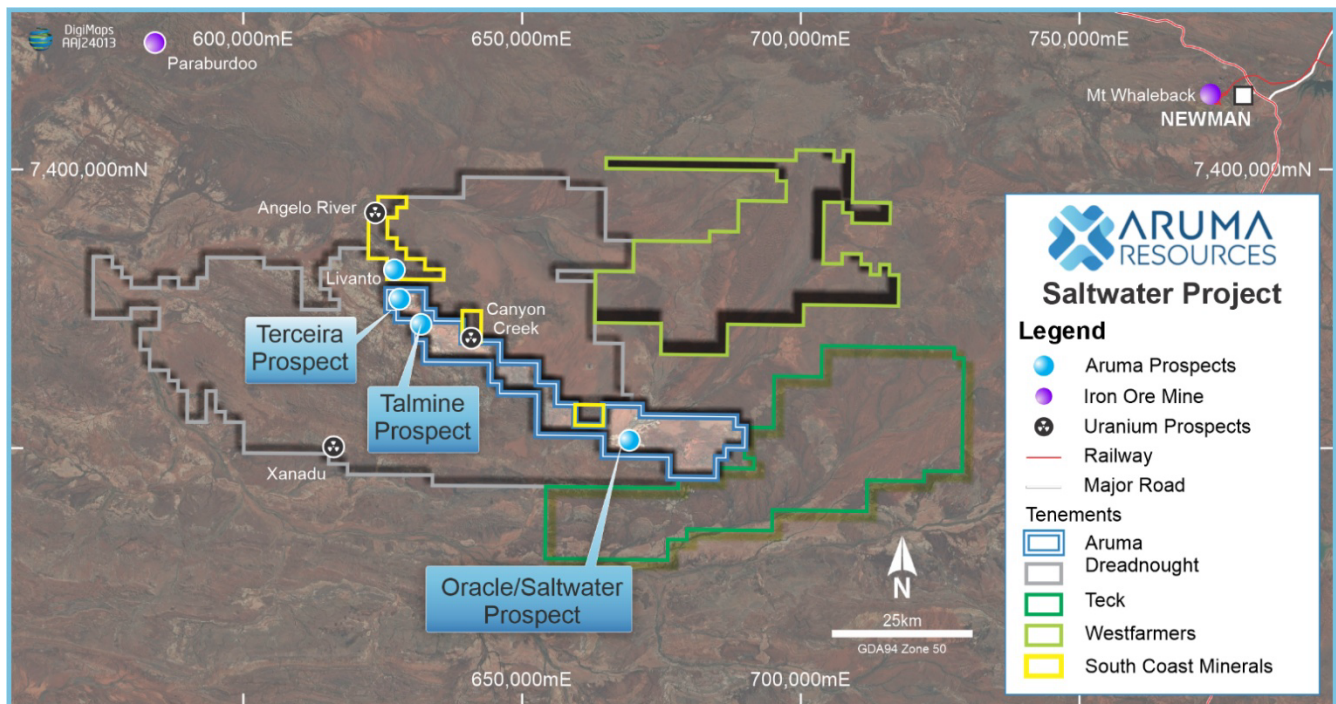


Figure 1: Saltwater Project Overview

Aruma's soil sampling programs are designed to identify gold and base metals mineralisation – plus critical minerals - across multiple structural and geophysical identified targets, in preparation for potential future drilling campaigns.

TALMINE PROSPECT

A total of 40 soil samples was taken at the Talmine Prospect (Figure 2) at a spacing of 50m x 400m, with anomalous gallium pathfinder mineralisation identified which remains open to the south and north-east.

The Talmine Prospect is situated approximately 2.5km southeast along strike from the Terceira Prospect and was initially identified through a prominent magnetic and electromagnetic anomaly extending approximately 1.2km in length.

The presence of highly anomalous gallium mineralisation has been interpreted as being associated with elevated aluminium and possibly sphalerite, which are commonly associated with our targeted geological and mineralisation model.

Based on the positive initial results, the Company intends to conduct further field work in Q2 2025, as part of a comprehensive geological model evaluation for the Project area.

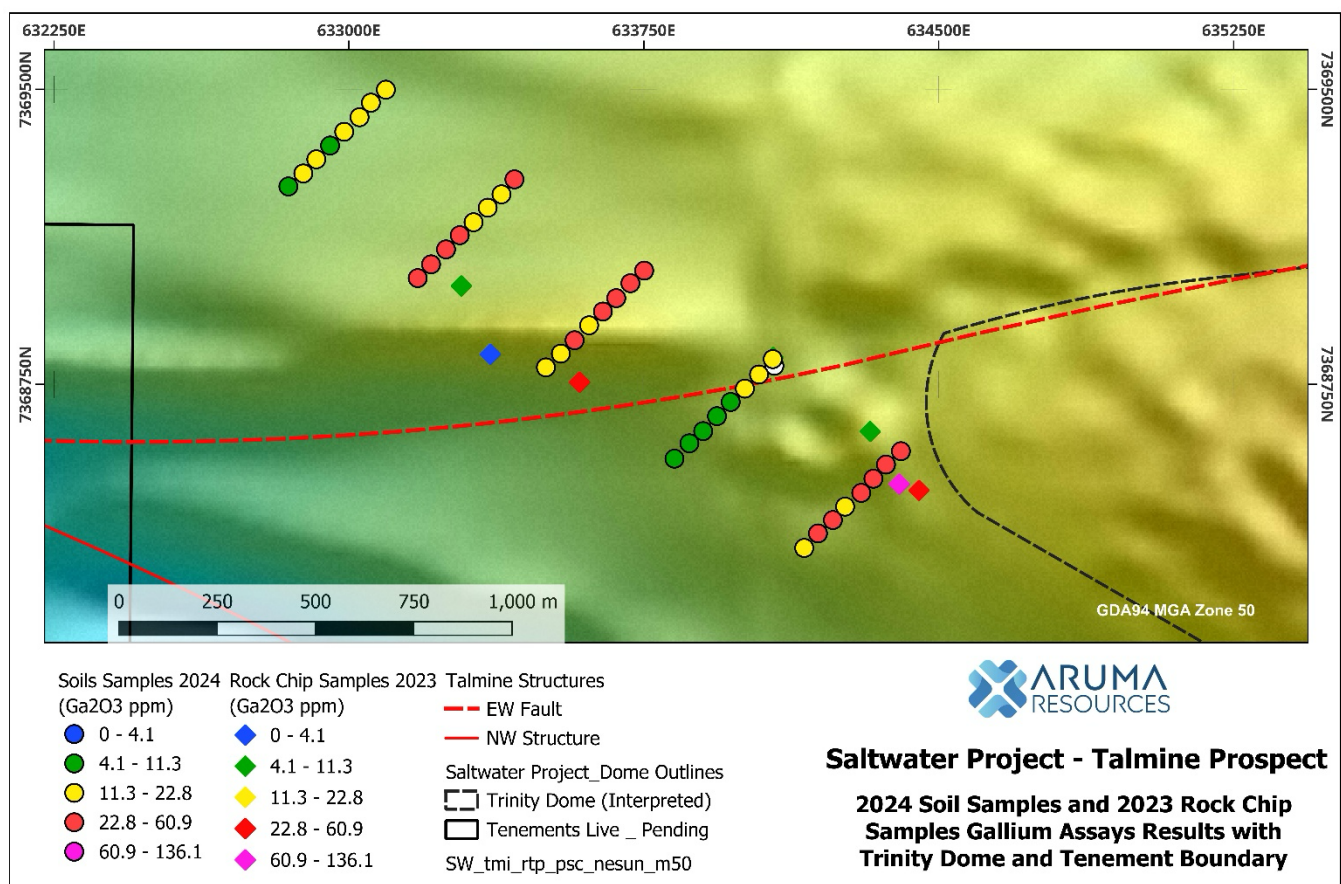


Figure 2: Project Talmine Prospect Soil Sample and Rock Chip Ga_2O_3 assay results

The Talmine Prospect is interpreted to lie within 1km of the northwestern extent of the newly defined “Trinity Dome” (Figure 4), an underexplored geological feature which has been largely untested in historical exploration programs.

The Saltwater Project is situated in the Ashburton Basin, which hosts multiple domes which contain gold projects. These include the Diligence Dome, which hosts Kalamazoo Resources’ (ASX: KZR) Ashburton Gold Project (1.44Moz @ 2.8g/t Au)¹, approximately 55km north-west from the Talmine Prospect.

Table 1 - Talmine Prospect - 2023-2024 Rock Chip and Soil Sampling Ga₂O₃ Result Highlights

Sample_ID	Easting	Northing	Sample_Type	Ga_ppm	Ga ₂ O ₃ _ppm
AR14023	634400	7368496	Rock Chip	101.21	136.05
AR14020	633587	7368755	Rock Chip	45.28	60.87
SWS0929	634366	7368546	Soil	29.23	39.29
SWS0903	633282	7369129	Soil	26.17	35.18
SWS0925	634231	7368405	Soil	25.89	34.80
AR14024	634450	7368480	Rock Chip	25.41	34.16
SWS0904	633247	7369093	Soil	24.41	32.81
SWS0905	633209	7369055	Soil	23.97	32.22
SWS0930	634404	7368580	Soil	23.97	32.22
SWS0914	633751	7369039	Soil	21	28.23
SWS0899	633421	7369271	Soil	20.44	27.48
SWS0906	633175	7369020	Soil	19.98	26.86
SWS0928	634334	7368510	Soil	19.24	25.86
SWS0911	633646	7368935	Soil	18.79	25.26
SWS0912	633680	7368969	Soil	18.53	24.91
SWS0924	634193	7368371	Soil	18.34	24.65

TERCEIRA PROSPECT

A 647-sample point sampling program was completed at the Terceira Prospect and has defined a gold geochemical anomaly of approximately 300m in strike length, associated with a distinct parallel magnetic anomaly (Figure 3). In addition, the gold anomaly is overlaid by arsenic and gallium anomalies of approximately 800m x 120m, providing further support of the target (Figure 3).

The magnetic anomaly is approximately 500m southwest of the Spinifex Dome (Figure 4). The Spinifex Dome is mapped as the Duck Creek-McGrath contact, which is interpreted as the same stratigraphy as the KZR’s Ashburton Gold Project.

An initial aircore drilling campaign is currently being designed, with heritage surveys and stakeholder approvals planned to commence in the current month.

¹ 9 December 2024 – Kalamazoo Resources Limited ASX Press Release “Ashburton Gold Project Delivers Exceptional Drill Results and De Grey Option Agreement Update”

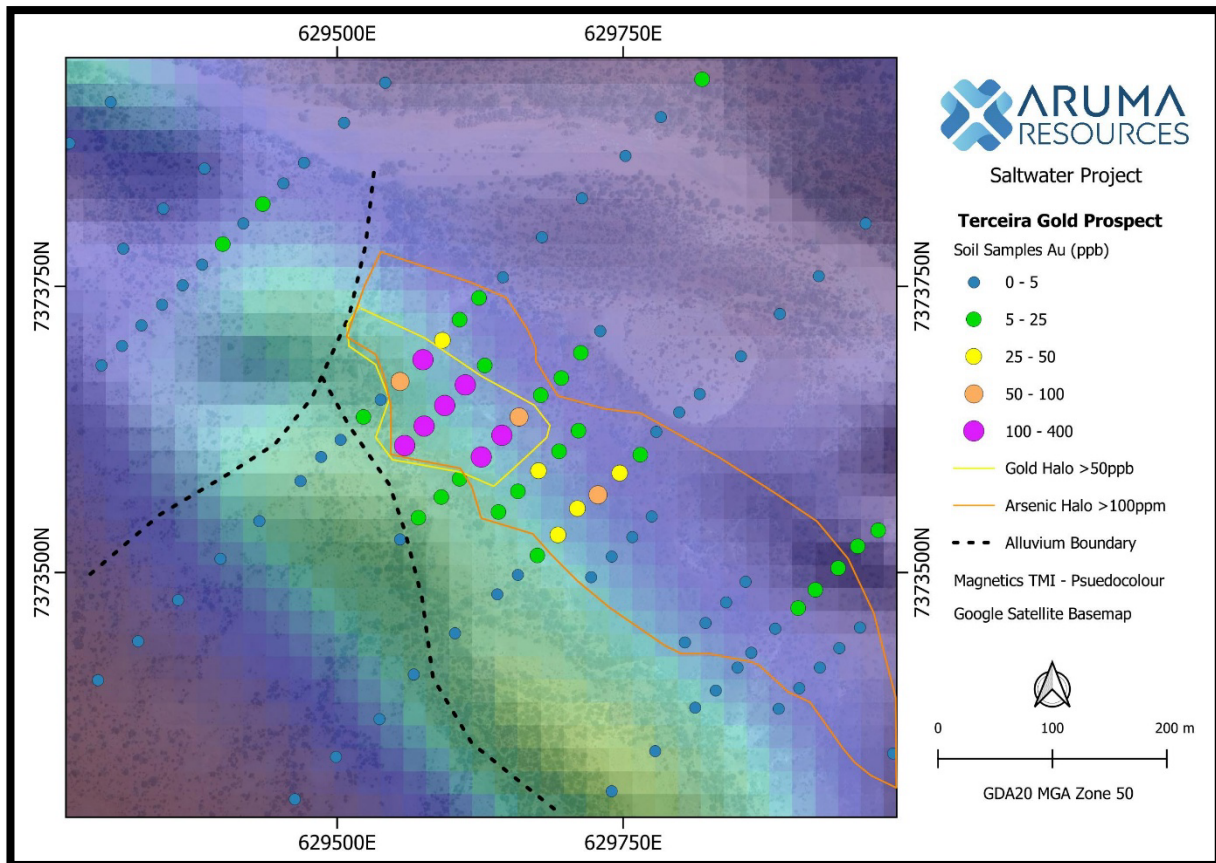


Figure 3: Terceira gold values in soil samples

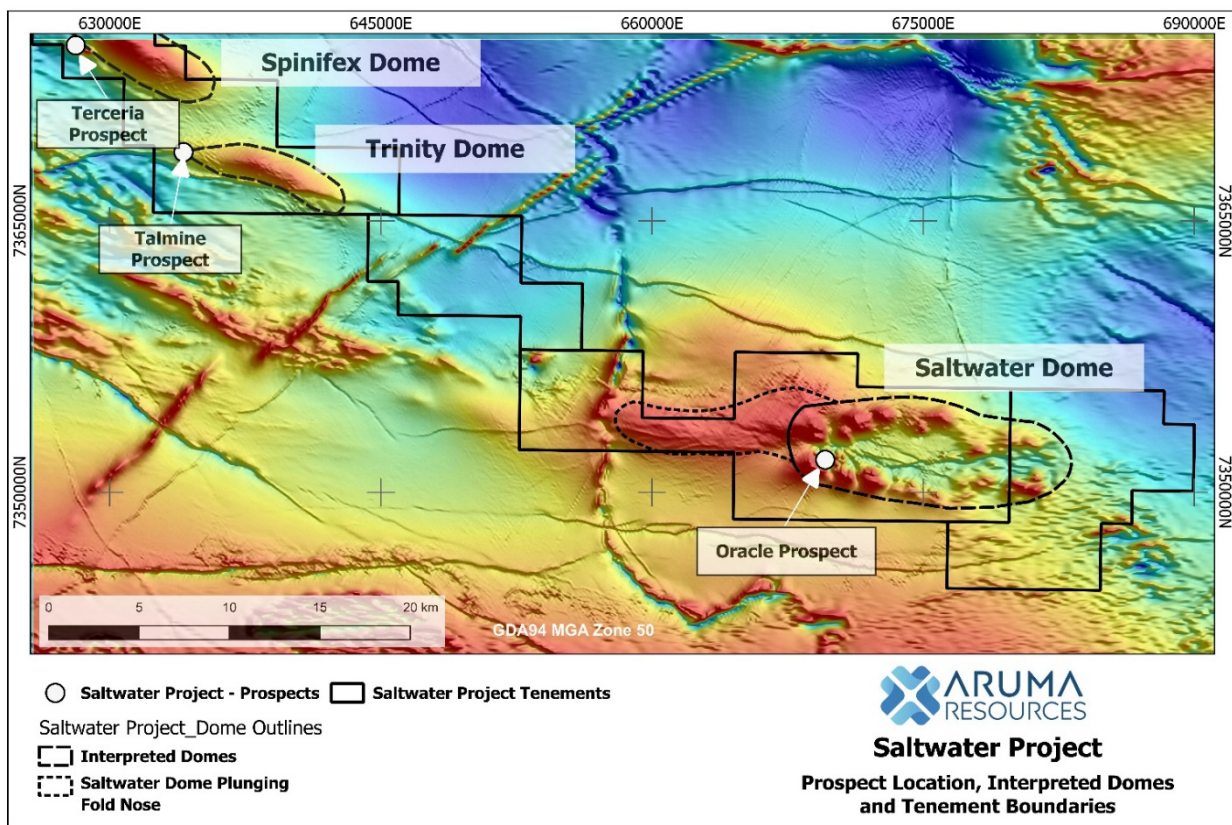


Figure 4: Saltwater Project Interpreted Domes and Prospect Locations

ORACLE PROSPECT

The Oracle Prospect is located on the southern margin of the interpreted Saltwater Dome. A total of 180 soil samples was taken at the Oracle Prospect at a spacing of 100m x 100m (Figure 5). A new mineralisation model has been proposed by the Company to test the potential for gold and either a sediment hosted copper or volcanogenic massive sulphide (VMS) mineralisation style.

The Oracle Prospect was first identified through a combination of geological mapping, historical data review and geochemical surveys. Initial work highlighted the potential for base metal mineralisation, which subsequent soil sampling and rock-chip analyses have reinforced. The comprehensive dataset now suggests the prospect is situated within a potential mineralisation model, consistent with VMS systems or sediment-hosted copper deposits.

Recent exploration has identified copper values consistently exceeding >900ppm, lead surpassing 500ppm, and zinc exceeding 1,000ppm. These anomalies, coupled with elevated arsenic, antimony, and cadmium concentrations, underline the potential for a significant mineralising system.

Ongoing exploration will be focused on refining this model to delineate high-priority drill targets.

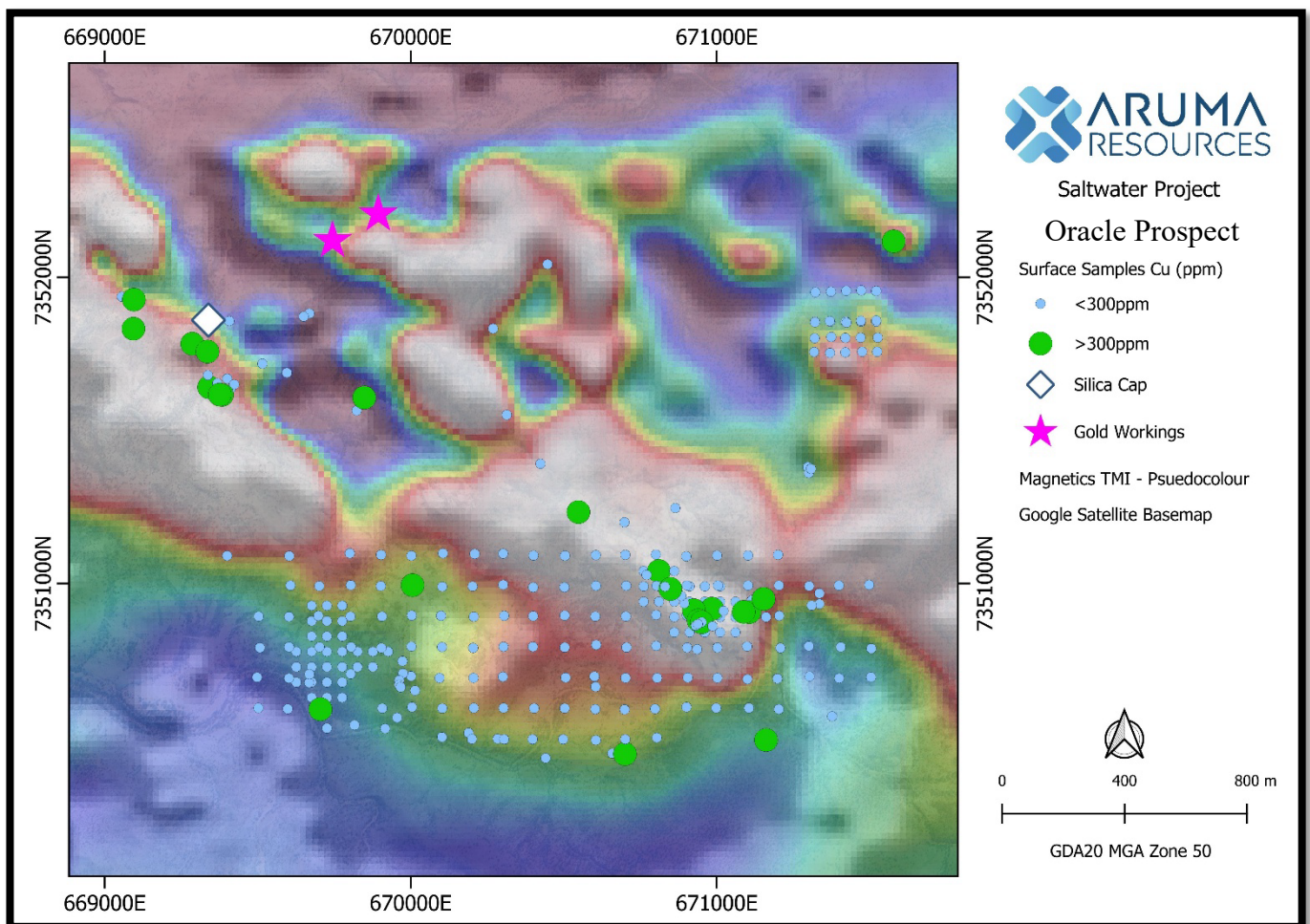


Figure 5: Copper distribution at Oracle Prospect

Saltwater Project Next steps

It is envisaged that drill testing of the Terceira Prospect will commence once stakeholder and heritage surveys have been completed. Planned and ongoing works at the Saltwater Project include:

- Analysis of high-resolution satellite and hyperspectral data
- Further mapping and ground truthing by Aruma's technical team
- Structural Analysis
- Reprocessing of previous geophysical data
- Further analysis of gold and base metals pathfinder elements and bedrock geology, at the Talmine and Oracle Prospects

This announcement has been authorised for release by the Board of Aruma Resources Ltd.

ENDS

For further information, please contact:

Grant Ferguson

Managing Director

Aruma Resources Limited

Telephone: +61 8 9321 0177

E: info@arumaresources.com

About Aruma Resources

Aruma Resources Limited (ASX: AAJ) is an ASX-listed minerals exploration company focused on the exploration and development of a portfolio of prospective projects in high-demand commodities – copper and uranium - in world-class mineral belts, in South Australia and Queensland. It also holds gold, lithium and REE prospective projects in Western Australia.



Figure 6 - Aruma Resources project portfolio.

Competent person statement

The information in this release that relates to Exploration Results, Mineral Resources or Ore Reserves is based on information compiled by Grant Ferguson who is a Fellow of the Australian Institute of Geoscience (AIG). Mr Ferguson is Managing Director and a full-time employee of the Company. Mr Ferguson has sufficient experience that is relevant to the style of mineralisation and type of deposit under consideration and to the activity being undertaken to qualify as a Competent Person as defined in the 2012 Edition of the 'Australasian Code for Reporting of Exploration Results, Mineral Resources and Ore Reserve'. Mr Ferguson consents to the inclusion in the release of the matters based on his information in the form and context in which it appears. All exploration results that have been reported previously and released to ASX are available to be viewed on the Company website www.arumaresources.com. The Company confirms it is not aware of any new information that materially affects the information included in the original announcement. The Company confirms that the form and context in which the Competent Person's findings are presented have not been materially modified from the original announcements.

Forward Looking Statement

Certain statements contained in this document constitute forward looking statements. Such forward-looking statements are based on a number of estimates and assumptions made by the Company and its consultants in light of experience, current conditions and expectations of future developments which the Company believes are appropriate in the current circumstances. These estimates and assumptions while considered reasonable by the Company are subject to known and unknown risks, uncertainties and other factors which may cause the actual results, achievements and performance of the Company to be materially different from the future results and achievements expressed or implied by such forward-looking statements. Forward looking statements include, but are not limited to, statements preceded by

words such as “planned”, “expected”, “projected”, “estimated”, “may”, “scheduled”, “intends”, “anticipates”, “believes”, “potential”, “could”, “nominal”, “conceptual” and similar expressions. There can be no assurance that Aruma plans to develop exploration projects that will proceed with the current expectations. There can be no assurance that Aruma will be able to confirm the presence of Mineral Resources or Ore Reserves, that any mineralisation will prove to be economic and will be successfully developed on any of Aruma’s mineral properties. Investors are cautioned that forward looking information is no guarantee of future performance and accordingly, investors are cautioned not to place undue reliance on these forward-looking statements

JORC Code, 2012 Edition – Table 1

Saltwater Surface Sampling Q4 2024

Section 1 Sampling Techniques and Data

(Criteria in this section apply to all succeeding sections.)

Results reported here are not being used towards Mineral Resource Estimate or Reserve calculations.

Criteria	JORC Code explanation	Commentary
Sampling techniques	<ul style="list-style-type: none"> <i>Nature and quality of sampling (e.g. cut channels, random chips, or specific specialised industry standard measurement tools appropriate to the minerals under investigation, such as down hole gamma sondes, or handheld XRF instruments, etc). These examples should not be taken as limiting the broad meaning of sampling.</i> <i>Include reference to measures taken to ensure sample representivity and the appropriate calibration of any measurement tools or systems used.</i> <i>Aspects of the determination of mineralisation that are Material to the Public Report.</i> <i>In cases where ‘industry standard’ work has been done this would be relatively simple (e.g. ‘reverse circulation drilling was used to obtain 1 m samples from which 3 kg was pulverised to produce a 30 g charge for fire assay’). In other cases more explanation may be required, such as where there is coarse gold that has inherent sampling problems. Unusual commodities or mineralisation types (e.g. submarine nodules) may warrant disclosure of detailed information.</i> 	<p>Soil Sampling Program: A total of 873 soil samples were collected at a depth of approximately 50cm First Pass Exploration, a Perth based geoservice consultancy. Sample spacing was conducted on the following spacing:</p> <p>Terceira Prospect – 400 (130 azimuth) x 50m (approximately 220 azimuth) spaced (Terceira corridor) 100 x 25m (close spaced). approximately 130 azimuth.</p> <p>Talmine Prospect – 400m (130 azimuth) x 50m (approximately 220 azimuth)</p> <p>Oracle Prospect – 100m x 100m (E-W orientation)</p> <p>The samples were sieved in the field to <2mm, with approximately and upto 150g of sample media collected and submitted for assay to Intertek Perth. After drying, the soil samples were pulverized with 10g of pulp split-off for aqua regia and ICPMS on a 52-element suite fire assay with an AAS finish with a minimum detection level of 1ppb Au.</p> <p>Soil sampling grids were designed to provide vectors to mineralisation, with each grid location determined by existing nearby rock chip anomalies.</p> <ul style="list-style-type: none"> No mineralisation was directly observed in the soil samples and determination of anomalism is dependent on lab analysis

Criteria	JORC Code explanation	Commentary
		<p>Historical Soil Sampling by other parties: Due to the historical nature of this work, detailed non Aruma soil sample information is not fully accessible and excluded from use in this press release.</p> <p>Rock Chip Sampling Details – The rock chip sampling program referenced in this announcement are detailed in ASX Announcement – 18 October 2023 – “Exploration Continues to Enhance Multi-Commodity Potential at Saltwater Project”</p>
Drilling techniques	<ul style="list-style-type: none"> • <i>Drill type (e.g. core, reverse circulation, open-hole hammer, rotary air blast, auger, Bangka, sonic, etc) and details (e.g. core diameter, triple or standard tube, depth of diamond tails, face-sampling bit or other type, whether core is oriented and if so, by what method, etc).</i> 	No drilling has been undertaken in this program and reported in this announcement.
Drill sample recovery	<ul style="list-style-type: none"> • <i>Method of recording and assessing core and chip sample recoveries and results assessed.</i> • <i>Measures taken to maximise sample recovery and ensure representative nature of the samples.</i> • <i>Whether a relationship exists between sample recovery and grade and whether sample bias may have occurred due to preferential loss/gain of fine/coarse material.</i> 	Drilling results are not being reported, no drilling data is included within this announcement.
Logging	<ul style="list-style-type: none"> • <i>Whether core and chip samples have been geologically and geotechnically logged to a level of detail to support appropriate Mineral Resource estimation, mining studies and metallurgical studies.</i> • <i>Whether logging is qualitative or quantitative in nature. Core (or costean, channel, etc) photography.</i> • <i>The total length and percentage of the relevant intersections logged.</i> 	Drilling results are not being reported, no drilling data is included within this announcement.

Criteria	JORC Code explanation	Commentary
Sub-sampling techniques and sample preparation	<ul style="list-style-type: none"> • <i>If core, whether cut or sawn and whether quarter, half or all cores taken.</i> • <i>If non-core, whether riffled, tube sampled, rotary split, etc and whether sampled wet or dry.</i> • <i>For all sample types, the nature, quality and appropriateness of the sample preparation technique.</i> • <i>Quality control procedures adopted for all sub-sampling stages to maximise representivity of samples.</i> • <i>Measures taken to ensure that the sampling is representative of the in-situ material collected, including for instance results for field duplicate/second-half sampling.</i> • <i>Whether sample sizes are appropriate to the grain size of the material being sampled.</i> 	<p>The samples were sieved in the field to <2mm, with approximately and upto 150g of sample media collected and submitted for assay to Intertek Perth. After drying, the soil samples were pulverized with 10g of pulp split-off for aqua regia and ICPMS on a 52-element suite fire assay with an AAS finish with a minimum detection level of 1ppb Au.</p> <p>Rock Chip Sampling Details – The rock chip sampling program referenced in this announcement are detailed in ASX Announcement – 18 October 2023 – “Exploration Continues to Enhance Multi-Commodity Potential at Saltwater Project”</p>
Quality of assay data and laboratory tests	<ul style="list-style-type: none"> • <i>The nature, quality and appropriateness of the assaying and laboratory procedures used and whether the technique is considered partial or total.</i> • <i>For geophysical tools, spectrometers, handheld XRF instruments, etc, the parameters used in determining the analysis including instrument make and model, reading times, calibrations factors applied and their derivation, etc.</i> • <i>Nature of quality control procedures adopted (e.g. standards, blanks, duplicates, external laboratory checks) and whether acceptable levels of accuracy (i.e. lack of bias) and precision have been established.</i> 	<ul style="list-style-type: none"> ○ Intertek Perth insert their own QAQC samples, including resplits, checks, blanks and standards. No QAQC issues were reported. ○ Rock Chip Sampling Details – The rock chip sampling program referenced in this announcement are detailed in ASX Announcement – 18 October 2023 – “Exploration Continues to Enhance Multi-Commodity Potential at Saltwater Project”
Verification of sampling and assaying	<ul style="list-style-type: none"> • <i>The verification of significant intersections by either independent or alternative company personnel.</i> • <i>The use of twinned holes.</i> • <i>Documentation of primary data, data entry procedures, data verification, data storage</i> 	<ul style="list-style-type: none"> ○ The Terceira and Talmine Prospects soil sampling programs are the first phase of testing, however previous sparse rock chip samples reflect similar grades. ○ Drilling results are not being reported, no drilling data is included within this announcement.

Criteria	JORC Code explanation	Commentary
	<p><i>(physical and electronic) protocols.</i></p> <ul style="list-style-type: none"> • <i>Discuss any adjustment to assay data.</i> 	<ul style="list-style-type: none"> ○ Soil samples and geological information is captured in Avenza and coordinates and track data saved from handheld GPSs used in the field. ○ Field data is entered into excel spreadsheets to be loaded into a MX deposit database <p>Rock Chip Sampling Details – The rock chip sampling program referenced in this announcement are detailed in ASX Announcement – 18 October 2023 – “Exploration Continues to Enhance Multi-Commodity Potential at Saltwater Project”</p>
Location of data points	<ul style="list-style-type: none"> • <i>Accuracy and quality of surveys used to locate drill holes (collar and down-hole surveys), trenches, mine workings and other locations used in Mineral Resource estimation.</i> • <i>Specification of the grid system used.</i> • <i>Quality and adequacy of topographic control.</i> 	<ul style="list-style-type: none"> ○ All sample locations were recorded with a Garmin handheld GPS which has an accuracy of +/- 5m. GDA20 MGAz54 <p>Rock Chip Sampling Details – The rock chip sampling program referenced in this announcement are detailed in ASX Announcement – 18 October 2023 – “Exploration Continues to Enhance Multi-Commodity Potential at Saltwater Project”</p>
Data spacing and distribution	<ul style="list-style-type: none"> • <i>Data spacing for reporting of Exploration Results.</i> • <i>Whether the data spacing and distribution is sufficient to establish the degree of geological and grade continuity appropriate for the Mineral Resource and Ore Reserve estimation procedure(s) and classifications applied.</i> • <i>Whether sample compositing has been applied.</i> 	<ul style="list-style-type: none"> ○ Drilling results are not being reported, no drilling data is included within this announcement. ○ Sample spacing and distribution is not sufficient to establish the degree of geological and grade continuity appropriate for a Mineral Resource <p>Rock Chip Sampling Details – The rock chip sampling program referenced in this announcement are detailed in ASX Announcement – 18 October 2023 – “Exploration Continues to Enhance Multi-Commodity Potential at Saltwater Project”</p>
Orientation of data in relation to geological structure	<ul style="list-style-type: none"> • <i>Whether the orientation of sampling achieves unbiased sampling of possible structures and the extent to which this is known, considering the deposit type.</i> • <i>If the relationship between the drilling orientation and the orientation of key mineralised structures is considered to have introduced a sampling bias, this should be assessed and reported if</i> 	<ul style="list-style-type: none"> ○ Drilling results are not being reported, no drilling data is included within this announcement. ○ At this early stage of exploration, mineralisation thickness’s, orientation and dips are not known

Criteria	JORC Code explanation	Commentary
	<i>material.</i>	
Sample security	<ul style="list-style-type: none"> • <i>The measures taken to ensure sample security.</i> 	<ul style="list-style-type: none"> ○ Drilling results are not being reported, no drilling data is included within this announcement. ○ All geochemical samples are collected, bagged and sealed by Aruma contractors and delivered by secured freight directly to Intertek Laboratory in Maddington
Audits or reviews	<ul style="list-style-type: none"> • <i>The results of any audits or reviews of sampling techniques and data.</i> 	<ul style="list-style-type: none"> ○ Drilling results are not being reported, no drilling data is included within this announcement. ○ No audits were completed on the Saltwater project. ○ Sampling methodologies are considered industry best practice. ○ The program is continuously reviewed by Senior Aruma personnel

Section 2 Reporting of Exploration Results

(Criteria listed in the preceding section also apply to this section.)

Criteria	JORC Code explanation	Commentary
Mineral tenement and land tenure status	<ul style="list-style-type: none"> • <i>Type, reference name/number, location and ownership including agreements or material issues with third parties such as joint ventures, partnerships, overriding royalties, native title interests, historical sites, wilderness or national park and environmental settings.</i> • <i>The security of the tenure held at the time of reporting along with any known impediments to obtaining a licence to operate in the area.</i> 	<ul style="list-style-type: none"> ○ The Saltwater Project, 120km SW of Newman is managed, explored and maintained by Aruma Resources. ○ The project contains four exploration licenses (EL52/3818, EL52/3846, EL52/3857 and EL52/3966) and covers a total area pf 450km² ○ All tenements are 100% owned by Aruma Resources. ○ All work was done under POW's ○ Aruma has agreements in place with the Native Title holders the Jidi Jidi Aboriginal Corporation
Exploration done by other parties	<ul style="list-style-type: none"> • <i>Acknowledgment and appraisal of exploration by other parties.</i> 	<ul style="list-style-type: none"> ○ The reports are acknowledged in the announcement and is numbered as a report in Minedex
Geology	<ul style="list-style-type: none"> • <i>Deposit type, geological setting and style of mineralisation.</i> 	<ul style="list-style-type: none"> ○ The Saltwater Project is located over Wyloo Group metasediments and the Bresnahan Group in

Criteria	JORC Code explanation	Commentary
		<p>the Ashburton Basin.</p> <ul style="list-style-type: none"> ○ The Saltwater Project is prospective for orogenic gold, volcanogenic base-metals and unconformity related REEs. ○ Drilling results are not being reported, no drilling data is included within this announcement.
Drill hole Information	<ul style="list-style-type: none"> ● <i>A summary of all information material to the understanding of the exploration results including a tabulation of the following information for all Material drill holes:</i> <ul style="list-style-type: none"> ○ <i>easting and northing of the drill hole collar</i> ○ <i>elevation or RL (Reduced Level – elevation above sea level in metres) of the drill hole collar</i> ○ <i>dip and azimuth of the hole</i> ○ <i>down hole length and interception depth</i> ○ <i>hole length.</i> ● <i>If the exclusion of this information is justified on the basis that the information is not Material and this exclusion does not detract from the understanding of the report, the Competent Person should clearly explain why this is the case.</i> 	<ul style="list-style-type: none"> ○ Drilling results are not being reported, no drilling data is included within this announcement.
Data aggregation methods	<ul style="list-style-type: none"> ● <i>In reporting Exploration Results, weighting averaging techniques, maximum and/or minimum grade truncations (e.g. cutting of high grades) and cut-off grades are usually Material and should be stated.</i> ● <i>Where aggregate intercepts incorporate short lengths of high-grade results and longer lengths of low-grade results, the procedure used for such aggregation should be stated and some typical examples of</i> 	<ul style="list-style-type: none"> ○ Drilling results are not being reported, no drilling data is included within this announcement. ○ No metal equivalents reported ○ Single point surface sample results only have been reported. No data aggregation has been done

Criteria	JORC Code explanation	Commentary
	<p><i>such aggregations should be shown in detail.</i></p> <ul style="list-style-type: none"> <i>The assumptions used for any reporting of metal equivalent values should be clearly stated.</i> 	
<i>Relationship between mineralisation widths and intercept lengths</i>	<ul style="list-style-type: none"> <i>These relationships are particularly important in the reporting of Exploration Results.</i> <i>If the geometry of the mineralisation with respect to the drill hole angle is known, its nature should be reported.</i> <i>If it is not known and only the down hole lengths are reported, there should be a clear statement to this effect (e.g. 'down hole length, true width not known').</i> 	<ul style="list-style-type: none"> ○ Drilling results are not being reported, no drilling data is included within this announcement.
<i>Diagrams</i>	<ul style="list-style-type: none"> <i>Appropriate maps and sections (with scales) and tabulations of intercepts should be included for any significant discovery being reported These should include, but not be limited to a plan view of drill hole collar locations and appropriate sectional views.</i> 	<ul style="list-style-type: none"> ○ Please refer to the accompanying document for figures and maps for locations of surface sampling
<i>Balanced reporting</i>	<ul style="list-style-type: none"> <i>Where comprehensive reporting of all Exploration Results is not practicable, representative reporting of both low and high grades and/or widths should be practiced to avoid misleading reporting of Exploration Results.</i> 	<ul style="list-style-type: none"> ○ Public reporting of exploration results by Aruma and past tenement holders and explorers are considered balanced. ○ Drilling results are not being reported, no drilling data is included within this announcement.
<i>Other substantive exploration data</i>	<ul style="list-style-type: none"> <i>Other exploration data, if meaningful and material, should be reported including (but not limited to): geological observations; geophysical survey results; geochemical survey results; bulk samples – size and</i> 	<ul style="list-style-type: none"> ○ Drilling results are not being reported, no drilling data is included within this announcement. ○ Suitable commentary of the geology encountered are given within the text of this document. ○ Soil Sampling Uncovers Gold Target at Saltwater Project announcement 28 November 2023

Criteria	JORC Code explanation	Commentary
	<p><i>method of treatment; metallurgical test results; bulk density, groundwater, geotechnical and rock characteristics; potential deleterious or contaminating substances.</i></p>	
	<ul style="list-style-type: none"> • <i>The nature and scale of planned further work (e.g. tests for lateral extensions or depth extensions or large-scale step-out drilling).</i> • <i>Diagrams clearly highlighting the areas of possible extensions,</i> • <i>including the main geological interpretations and future drilling areas, provided this information is not commercially sensitive.</i> 	<ul style="list-style-type: none"> ○ Geological mapping ○ Surface sampling ○ Geophysical re-evaluation ○ Aircore, RC and Diamond Drilling

Table 2 – Saltwater Samples 2024 Soil Samples Assay Table

Sample ID	East	North	Au_ppm	Ag_ppm	Al_ppm	As_ppm	Ba_ppm	Co_ppm	Cu_ppm	Fe_%	Ga_ppm	Ga ₂ O ₃	Pb_ppm	S_ppm	V_ppm	Zn_ppm
SWS0238	630447	7373740	0	-	39072	18	301	7	16	2.99			13	920	85	22
SWS0239	630411	7373703	0	-	80238	0	434	13	27	4.53			25	420	91	53
SWS0240	630380	7373668	0.01	-	75022	0	402	14	26	4.21			25	6450	88	51
SWS0241	630340	7373631	0	-	41882	0	277	6	15	3.21			17	66	61	26
SWS0242	630304	7373599	0	-	18371	11	160	6	13	4.25			15	257	64	17
SWS0243	630132	7373696	0	-	19265	0	158	6	12	2.6			16	0	38	19
SWS0244	630169	7373735	0	-	46719	0	304	9	23	3.92			22	1961	70	42
SWS0245	630202	7373768	0.02	-	74676	0	425	14	26	4.5			25	2283	90	52
SWS0246	630236	7373806	0.01	-	69871	11	329	13	24	4.7			21	2608	84	47
SWS0247	630271	7373890	0.01	-	69059	10	353	12	24	4.42			24	4903	88	44
SWS0248	630101	7373938	0.01	-	87666	11	432	13	27	4.69			25	6658	91	56
SWS0249	630063	7373905	0.01	-	75536	0	392	11	26	4.37			22	1523	78	52
SWS0250	630029	7373868	0	-	32467	0	213	11	20	2.98			19	217	48	30
SWS0251	629994	7373832	0	-	59536	0	345	11	23	4.11			22	178	75	43
SWS0252	629962	7373805	0	-	36269	0	251	7	16	3.38			18	91	58	26
SWS0253	629928	7374042	0.01	-	74941	0	423	11	23	4.29			22	2948	93	49
SWS0254	629891	7374004	0	-	78493	0	482	12	25	4.23			24	1293	91	49
SWS0255	629855	7373970	0	-	32612	0	173	6	12	2.39			13	2064	45	23
SWS0256	629819	7373931	0.02	-	24503	0	181	4	9	1.77			10	213	33	17
SWS0257	629754	7374140	0	-	29679	0	292	4	9	1.9			10	334	38	18
SWS0258	629718	7374105	0	-	22662	0	180	3	8	1.93			11	0	33	13
SWS0259	629683	7374070	0	-	24266	0	226	4	9	2.12			13	115	37	16
SWS0260	629648	7374034	0	-	40943	0	236	7	15	2.89			15	108	47	27
SWS0261	629612	7373999	0	-	56526	0	317	9	21	3.7			20	783	71	39
SWS0262	629577	7373964	0	-	59994	0	358	10	22	4			21	105	78	41
SWS0263	629542	7373928	0	-	20690	0	172	7	12	2.73			19	64	41	21
SWS0264	629584	7374517	0	-	25275	0	202	4	10	2.23			14	0	40	16
SWS0265	629549	7374482	0	-	26806	0	195	4	10	2.14			14	0	42	17

SWS0266	629513	7374446	0	-	29989	0	190	4	12	2.11	13	0	52	19
SWS0267	629478	7374411	0	0	31742	0	225	4	8	2.81	17	52	61	17
SWS0268	629443	7374376	0	0	55619	14	303	6	14	7.81	24	71	86	24
SWS0269	629407	7374340	0	0	45234	10	250	6	14	4.89	17	631	72	23
SWS0270	629372	7374305	0	0	55333	15	293	8	19	6.62	20	337	97	30
SWS0271	629337	7374270	0	0	73208	0	387	11	24	4.69	23	111	93	44
SWS0272	629301	7374234	0	0	30935	0	172	6	13	2.5	14	52	42	23
SWS0273	629266	7374199	0	0	61240	0	353	10	22	4.04	21	84	79	38
SWS0274	629230	7374164	0	0	44433	0	276	7	15	2.92	17	10129	56	28
SWS0275	629195	7374128	0	0	64903	0	360	10	24	4.2	21	184	80	44
SWS0276	629160	7374093	0.01	0	56209	0	322	9	21	3.85	20	674	71	38
SWS0277	629124	7374058	0	0	46198	0	305	9	20	3.69	20	72	68	34
SWS0278	629089	7374022	0	0	18398	16	189	8	13	4.52	23	195	58	24
SWS0279	628990	7374470	0	0	28602	0	215	3	11	2.82	15	53	50	15
SWS0280	629025	7374505	0	0	29635	0	214	4	12	3.18	15	55	54	16
SWS0281	629061	7374540	0	0	57248	0	388	8	20	4.31	19	1409	77	31
SWS0282	629096	7374576	0	0	42744	0	322	3	10	2.79	10	9809	65	11
SWS0283	629132	7374611	0	0	36482	10	368	5	15	3.52	13	405	75	18
SWS0284	629167	7374646	0	0	29189	11	578	4	14	3.51	13	880	76	14
SWS0285	629202	7374682	0	0	38222	18	731	4	11	6.64	21	11499	117	11
SWS0286	629238	7374717	0	0	44706	11	457	5	14	4.23	16	1219	86	19
SWS0287	629273	7374753	0	0	51001	11	356	7	16	4.59	21	1277	85	24
SWS0288	629308	7374788	0	0	46119	0	294	6	16	3.9	16	426	74	22
SWS0289	629344	7374823	0	0	52791	11	245	8	19	4.4	18	833	82	27
SWS0290	629379	7374859	0	0	51694	20	235	8	20	6.25	22	162	97	26
SWS0291	629414	7374894	0	0	49536	13	272	7	18	5.24	21	221	87	27
SWS0292	629450	7374929	0	0	53129	15	217	8	19	5.49	21	69	87	27
SWS0293	629485	7374965	0	0	39929	12	204	6	18	5.04	20	65	83	22
SWS0294	629209	7375235	0	0	25244	19	174	5	12	3.41	10	190	45	19
SWS0295	629174	7375200	0	0	35301	11	209	2	7	4.5	6	52457	42	13
SWS0296	629139	7375165	0	0	65990	52	161	3	8	8.2	10	358	66	11

SWS0297	629103	7375129	0	0	54758	46	167	6	14	11.78	16	4465	98	19
SWS0298	629068	7375094	0	0	35846	26	195	5	14	6.52	14	247	73	21
SWS0299	629033	7375059	0	0	34018	21	201	5	14	5.97	15	610	70	21
SWS0300	628997	7375023	0	0	41200	21	221	6	16	6.87	18	152	90	22
SWS0301	628962	7374988	0	0	64790	0	853	2	13	3.34	11	3391	76	8
SWS0302	628927	7374953	0.01	0	61043	44	402	6	13	8.01	17	456	74	13
SWS0303	628891	7374917	0.01	0	48755	30	585	4	12	7.32	11	2483	60	12
SWS0304	628856	7374882	0.01	0	53871	24	234	6	15	7.67	20	497	98	20
SWS0305	628821	7374846	0.01	0	74087	14	288	5	11	4.46	18	686	86	18
SWS0306	628785	7374811	0.01	0	25341	11	999	3	11	3.27	12	522	73	12
SWS0307	628750	7374776	0	0	54874	18	269	8	21	5.54	21	137	101	30
SWS0308	628714	7374740	0	0	42140	19	257	7	17	6.59	22	77	95	25
SWS0309	628679	7374705	0	0	50633	13	241	9	20	5.18	20	81	85	31
SWS0310	628644	7374670	0	0	35431	0	198	6	15	3.67	16	0	61	24
SWS0311	628955	7374434	0	0	46888	0	277	4	12	3.04	15	205	57	12
SWS0312	628919	7374399	0	0	44032	0	230	7	17	3.97	17	22207	72	27
SWS0313	628884	7374364	0	0	39930	0	210	8	18	2.83	23	133	47	31
SWS0314	628849	7374328	0	0	40713	0	244	6	14	2.85	15	1068	46	25
SWS0315	628813	7374293	0	0	66066	0	300	10	22	4.02	21	30800	77	43
SWS0316	628778	7374258	0	0	76004	22	265	8	19	4.81	18	3303	96	35
SWS0317	628743	7374222	0	0	76377	0	408	11	24	4.46	23	6719	86	49
SWS0318	628707	7374187	0	0	24511	0	240	6	14	2.79	20	0	41	23
SWS0319	628672	7374151	0	0	60482	0	368	10	22	4.02	23	183	77	46
SWS0320	628637	7374116	0	0	38813	0	234	8	17	3.14	19	411	52	30
SWS0321	628601	7374081	0	0	36668	0	231	8	17	3.14	17	76	52	29
SWS0322	628566	7374045	0	0	35132	0	250	8	17	3.23	18	2094	52	31
SWS0323	628531	7374010	0	0	34610	0	181	6	14	2.43	15	100	42	26
SWS0324	628495	7373975	0	0	46516	0	352	9	20	3.41	21	198	56	38
SWS0325	628460	7373939	0	0	39052	0	252	8	20	3.23	18	95	50	31
SWS0326	628424	7373904	0	0	20953	0	184	7	14	2.77	18	0	38	22
SWS0327	628389	7373869	0	0	26218	0	204	7	14	2.97	17	0	45	24

SWS0328	628354	7373833	0	0	12863	17	253	8	17	4.79	21	70	67	21
SWS0329	627937	7373963	0	0	52516	0	280	10	22	3.81	21	218	66	39
SWS0330	627972	7373998	0	0	56182	0	343	10	21	3.62	20	13520	68	40
SWS0331	628007	7374033	0	0	55161	0	350	11	23	3.91	23	9184	71	43
SWS0332	628043	7374069	0	0	32695	0	219	7	15	2.62	17	344	44	29
SWS0333	628078	7374104	0	0	46063	0	295	9	20	3.52	20	313	60	37
SWS0334	628113	7374139	0	0	43996	0	283	8	17	3.21	21	4458	60	40
SWS0335	628149	7374175	0	0	59421	0	330	11	21	3.59	21	1847	72	42
SWS0336	628184	7374210	0	0	53842	0	268	11	23	4.22	23	374	69	42
SWS0337	628219	7374245	0	0	62952	0	289	11	25	4.56	28	144	81	49
SWS0338	628255	7374281	0	0	61958	12	228	11	26	4.84	20	116	86	41
SWS0339	628290	7374316	0	0	46153	11	230	10	20	4.5	22	188	77	35
SWS0340	628326	7374351	0	0	43942	0	265	12	20	4.5	18	94	77	33
SWS0341	628361	7374387	0	0	60937	10	295	11	25	4.84	24	117	87	46
SWS0342	628396	7374422	0	0	61603	11	236	11	25	5.5	21	69	93	42
SWS0343	628432	7374458	0	0	68194	12	210	10	28	5.86	23	83	98	42
SWS0344	628467	7374493	0	0	49245	16	270	11	24	6.29	21	95	109	34
SWS0345	628502	7374528	0	0	65739	14	233	13	29	5.19	21	60	99	43
SWS0346	628538	7374564	0.01	0	25393	0	189	5	16	2.58	14	0	44	19
SWS0347	628573	7374599	0.01	0	30313	0	205	6	13	2.85	14	0	48	22
SWS0348	628608	7374634	0	0	34273	0	184	6	13	2.95	14	0	51	23
SWS0349	629287	7375860	0.01	0	59891	18	190	5	16	8.08	14	122	98	22
SWS0350	629252	7375824	0	0	66618	16	218	5	14	9.04	14	112	93	16
SWS0351	629217	7375789	0	0	48782	17	186	6	19	10.39	20	105	86	20
SWS0352	629181	7375754	0	0	51461	18	175	6	13	8.84	20	185	102	21
SWS0353	629146	7375718	0	0	65977	29	182	7	19	13.55	28	63	131	21
SWS0354	629110	7375683	0.01	0	58174	25	185	7	19	12.82	26	69	114	24
SWS0355	629075	7375647	0	0	55312	20	194	7	18	10.35	23	92	95	26
SWS0356	629040	7375612	0	0	55729	15	197	7	21	7.94	21	53	85	27
SWS0357	629004	7375577	0	0	26061	21	201	4	13	8.08	27	56	114	11
SWS0358	628969	7375541	0	0	33514	0	164	4	14	4.56	16	0	69	17

SWS0359	628934	7375506	0	0	40242	12	187	5	17	5.18	19	0	78	20
SWS0360	628898	7375471	0	0	26833	10	161	4	13	4.14	16	0	65	16
SWS0361	628863	7375435	0	0	26309	12	163	4	12	4.62	17	0	71	14
SWS0362	628828	7375400	0	0	24732	21	213	4	14	7.24	26	56	117	12
SWS0363	628792	7375365	0	0	27870	15	185	4	13	5.44	21	0	88	15
SWS0364	628757	7375329	0	0	31225	11	155	5	14	4.19	17	141	70	17
SWS0365	628722	7375294	0	0	25462	10	156	4	11	4.22	17	0	68	14
SWS0366	628686	7375259	0	0	25205	0	154	5	12	3.92	16	0	63	14
SWS0367	628651	7375223	0	0	35221	0	148	5	14	3.96	15	62	60	19
SWS0368	628616	7375188	0	0	22403	0	148	4	12	3.85	15	0	60	13
SWS0369	628580	7375153	0	0	27081	11	162	5	13	4.08	17	0	63	16
SWS0370	628545	7375117	0	0	31826	0	164	5	13	3.61	14	0	59	20
SWS0371	628509	7375082	0	0	34928	0	167	5	14	3.56	15	0	59	22
SWS0372	628474	7375046	0	0	29998	0	192	5	14	3.93	15	52	64	20
SWS0373	628439	7375011	0	0	31918	0	228	6	13	3.11	14	58	52	22
SWS0374	628403	7374976	0	0	26018	0	217	5	12	2.85	12	0	45	19
SWS0375	628368	7374940	0	0	80264	0	411	13	26	4.83	23	55	102	50
SWS0376	628333	7374905	0	0	33533	0	191	6	15	3.46	15	0	56	22
SWS0377	628297	7374870	0	0	73128	11	256	10	26	5.72	21	53	96	41
SWS0378	628262	7374834	0	0	33457	0	184	5	15	3.2	13	0	50	22
SWS0379	628227	7374799	0	0	24031	0	161	4	10	2.96	13	143	44	17
SWS0380	628191	7374764	0	0	26165	0	174	4	11	2.97	13	0	47	18
SWS0381	628156	7374728	0	0	55470	11	239	9	20	5.24	19	131	86	27
SWS0382	628121	7374693	0	0	33647	0	202	6	14	3.32	15	0	53	22
SWS0383	628085	7374658	0	0	19837	0	150	4	8	2.19	11	0	33	13
SWS0384	628050	7374622	0	0	40683	0	240	6	16	2.8	16	197	51	28
SWS0385	628014	7374587	0	0	47581	0	227	9	20	3.44	18	51	59	34
SWS0386	627979	7374551	0	0	49474	0	225	8	20	3.36	19	174	63	37
SWS0387	627944	7374516	0	0	36173	0	261	8	16	3.13	20	53	50	30
SWS0388	627908	7374481	0	0	34788	0	263	10	17	3.24	18	65	49	30
SWS0389	627873	7374445	0	0	30296	0	238	7	14	2.94	17	53	43	26

SWS0390	627838	7374410	0	0	30577	0	244	7	14	3.08	16	52	45	26
SWS0391	627802	7374375	0	0	59490	0	286	11	24	4.17	21	199	69	45
SWS0392	627597	7374716	0	0	56586	15	306	9	21	4.54	22	4809	91	37
SWS0393	627633	7374751	0	0	31253	22	244	5	16	3.49	17	953	87	19
SWS0394	627668	7374787	0	0	35419	17	283	6	21	6.07	21	227	89	30
SWS0395	627703	7374822	0	0	38122	21	531	5	19	5.14	15	494	85	27
SWS0396	627739	7374858	0	0	79636	17	385	1	19	4.52	13	36002	75	21
SWS0397	627774	7374893	0	0	99501	36	152	1	5	7.45	15	34266	143	6
SWS0398	627809	7374928	0	0	36539	12	463	6	18	3.92	13	1233	84	22
SWS0399	627845	7374964	0	0	40341	0	155	8	16	5	16	1137	77	24
SWS0400	627880	7374999	0	0	81429	10	508	14	34	6.19	24	206	116	54
SWS0401	627916	7375034	0	0	55296	0	225	13	26	5.59	20	180	96	41
SWS0402	627951	7375070	0	0	66579	0	410	10	27	5.41	21	108	96	43
SWS0403	627986	7375105	0	0	56935	0	205	11	25	4.93	20	134	93	42
SWS0404	628022	7375140	0	0	69336	11	319	11	28	5.43	21	68	100	42
SWS0405	628057	7375176	0	0	55988	0	199	9	23	4.87	25	231	93	40
SWS0406	628092	7375211	0	0	58541	11	223	14	27	5.49	21	205	100	43
SWS0407	628128	7375246	0	0	51053	13	271	10	25	5.08	19	72	95	34
SWS0408	628163	7375282	0	0	33055	10	5000	7	17	4.97	31	1256	78	23
SWS0409	628198	7375317	0	0	35690	0	165	7	17	4.56	15	0	75	27
SWS0410	628234	7375353	0.01	0	29125	0	205	7	15	4.3	17	52	70	25
SWS0411	628269	7375388	0.01	0	33962	0	206	8	17	4.62	18	53	75	25
SWS0412	628304	7375423	0	0	31874	0	2146	6	16	4.76	19	495	76	22
SWS0413	628099	7375765	0	0	49264	21	1305	5	21	8.95	33	319	156	17
SWS0414	628064	7375729	0	0	55367	11	336	5	19	5.44	21	61	92	18
SWS0415	628064	7375729	0	0	57646	16	2756	5	19	7.28	26	1000	122	18
SWS0416	628064	7375729	0	0	51339	10	316	3	13	4.62	14	347	71	8
SWS0417	628029	7375694	0	0	63494	16	681	5	21	7.54	26	27987	130	23
SWS0418	628029	7375694	0	0	65922	15	670	5	19	5.77	17	293	95	16
SWS0419	628029	7375694	0	0	52933	12	358	6	21	5.71	21	1235	96	25
SWS0420	628029	7375694	0	0	51739	11	251	10	22	6.09	22	59	99	33

SWS0421	627993	7375659	0	0	36340	10	345	7	18	5.75	20	144	89	25
SWS0422	627993	7375659	0	0	38431	0	305	10	20	5.23	20	63	86	27
SWS0423	627993	7375659	0.01	0	74214	0	656	11	34	5.49	19	194	95	50
SWS0424	627993	7375659	0.01	0	97693	0	3692	12	38	6.02	21	861	112	58
SWS0425	627993	7375659	0	0	36682	0	164	8	16	4.48	19	0	75	23
SWS0426	627993	7375659	0	0	30779	0	402	9	15	4.46	25	97	72	20
SWS0427	627958	7375623	0	0	64417	0	333	11	28	4.99	66	354	96	49
SWS0428	627958	7375623	0	0	28703	0	130	8	15	4	14	0	65	17
SWS0429	627958	7375623	0	0	45332	0	181	8	22	5.01	17	51	84	31
SWS0430	627958	7375623	0	0	39013	0	177	9	19	5.01	17	0	82	26
SWS0431	627958	7375623	0	0	46872	0	175	11	21	4.91	17	0	84	32
SWS0432	627958	7375623	0	0	59988	0	171	11	24	5.29	18	0	92	41
SWS0433	627923	7375588	0	0	32216	14	282	6	15	4.25	14	244	91	20
SWS0434	627923	7375588	0	0	41146	17	237	7	19	4.58	15	266	88	26
SWS0435	627923	7375588	0	0	24189	12	167	5	15	3.98	13	136	72	19
SWS0436	627923	7375588	0	0	29211	10	215	7	19	3.74	20	102	67	22
SWS0437	627923	7375588	0	0	31347	13	165	6	19	4.34	14	64	77	23
SWS0438	627887	7375553	0	0	35254	14	193	7	19	4.21	18	77	78	28
SWS0439	627887	7375553	0.01	0	43461	81	271	8	25	3.87	18	445	73	39
SWS0440	627887	7375553	0	0	56742	63	559	13	27	5.33	27	297	93	47
SWS0441	627887	7375553	0.02	0	73842	64	425	9	31	4.96	23	185	94	49
SWS0442	628107	7376318	0	0	42154	23	399	5	19	8.46	34	104	145	16
SWS0443	628071	7376283	0	0	42385	12	305	2	12	4.79	18	8142	75	6
SWS0444	628036	7376247	0	0	44906	15	377	3	14	6.16	24	117	94	11
SWS0445	628001	7376212	0	0	45157	13	382	2	12	4.61	15	5776	74	7
SWS0446	627965	7376177	0	0	37192	0	186	1	8	2.99	10	71346	51	4
SWS0447	627930	7376141	0	0	38202	20	366	2	9	7.03	26	53480	103	6
SWS0448	627894	7376106	0	0	50841	19	677	3	15	7.71	24	2737	105	12
SWS0449	627859	7376071	0	0	47213	13	612	4	16	5.72	22	3225	94	13
SWS0450	627824	7376035	0	0	50707	10	404	2	13	4.32	18	7018	77	8
SWS0451	627788	7376000	0	0	59742	0	818	2	14	3.74	14	1367	73	9

SWS0452	627753	7375965	0	0	54957	0	564	2	12	4.25	15	941	78	9
SWS0453	627718	7375929	0	0	59672	16	345	6	23	6.9	23	322	109	23
SWS0454	627718	7375929	0	0	60712	18	446	6	24	8.31	30	329	134	23
SWS0455	627682	7375894	0	0	57828	15	479	5	22	6.66	23	9147	113	18
SWS0456	627682	7375894	0	0	31332	22	997	3	18	9.41	39	272	155	8
SWS0457	627647	7375859	0	0	63700	15	788	7	26	7.4	31	760	119	30
SWS0458	627647	7375859	0	0	45863	11	482	6	19	4.77	17	263	88	23
SWS0459	627612	7375823	0	0	32441	11	167	6	18	5.57	18	121	89	24
SWS0460	627612	7375823	0	0	46864	10	329	9	20	4.55	25	280	89	31
SWS0461	627435	7375646	0	0	43915	0	226	9	21	5.32	18	68	89	32
SWS0462	627400	7375611	0	0	64048	10	352	11	27	5.57	21	219	101	46
SWS0463	627364	7375576	0	0	90421	12	1585	15	38	6.63	23	388	122	62
SWS0464	627329	7375540	0	0	70354	11	248	15	31	6.31	22	71	100	45
SWS0465	627293	7375505	0	0	38842	10	155	5	21	5.18	18	75	87	26
SWS0466	627258	7375470	0	0	38849	0	142	7	18	4.53	14	59	76	27
SWS0467	627223	7375434	0	0	40567	0	173	7	17	4.48	16	111	81	26
SWS0468	627187	7375399	0	0	68453	11	267	10	29	5.67	26	76	103	41
SWS0469	627152	7375364	0	0	39017	10	187	10	22	5.76	18	59	92	28
SWS0470	627117	7375328	0	0	42901	12	190	11	25	6.24	22	0	103	31
SWS0471	627081	7375293	0.01	0	56481	13	594	12	29	6.13	34	7962	112	37
SWS0472	627046	7375258	0	0	45019	11	293	5	15	2.72	20	2079	74	20
SWS0473	627011	7375222	0	0	64353	0	516	3	11	1.53	11	5539	79	15
SWS0474	626975	7375187	0	0	55635	0	508	2	6	1.63	13	2567	61	14
SWS0475	626940	7375151	0	0	41797	10	361	5	22	2.91	20	2670	58	22
SWS0476	626905	7375116	0	0	32383	0	215	7	18	3.61	18	150	60	23
SWS0477	626869	7375081	0	0	33971	12	266	13	22	3.16	19	136	53	27
SWS0478	626834	7375045	0	0	36686	13	241	7	29	2.97	27	92	51	26
SWS0479	626798	7375010	0.01	0	50942	20	339	7	31	3.84	36	175	67	38
SWS0480	626763	7374975	0	0	53030	26	294	11	26	4.22	20	385	71	48
SWS0481	626728	7374939	0.04	0	45596	27	355	13	26	3.39	11	329	61	32
SWS0482	626692	7374904	0	0	60901	42	411	25	38	5.3	16	1437	88	56

SWS0483	626372	7375144	0	0	39875	0	245	12	22	3.47	19	77	60	36
SWS0484	626406	7375181	0	0	27800	0	220	7	16	3.08	15	98	47	29
SWS0485	626445	7375215	0	0	32197	12	258	12	21	3.43	19	61	49	36
SWS0486	626479	7375252	0.01	0	82367	16	414	12	35	4.75	24	348	95	61
SWS0487	626516	7375286	0.01	0	72537	18	416	11	32	4.21	26	4724	87	46
SWS0488	626548	7375321	0	0	51195	14	361	11	28	4.86	31	133	88	37
SWS0489	626586	7375360	0	0	66763	17	375	8	33	3.81	32	864	98	34
SWS0490	626621	7375393	0	0	30624	16	570	5	31	3.2	18	831	70	19
SWS0491	626658	7375427	0	0	88075	0	669	2	25	1.04	36	2737	83	15
SWS0492	626694	7375462	0	0	68732	0	487	0	9	0.73	27	28919	86	12
SWS0493	626725	7375498	0	0	27928	11	193	6	20	3.7	14	623	79	21
SWS0494	626762	7375534	0.01	0	31284	0	286	4	18	2.66	12	10389	70	16
SWS0495	626797	7375569	0	0	34130	0	198	5	21	3.31	13	797	67	23
SWS0496	626833	7375604	0	0	51114	14	225	8	26	4.2	16	959	89	30
SWS0497	626868	7375640	0	0	44151	12	201	8	24	5.17	17	110	82	31
SWS0498	626903	7375675	0.01	0	53736	11	211	10	27	6.34	21	132	101	35
SWS0499	626939	7375710	0	0	45360	12	213	9	25	6.45	23	59	107	30
SWS0500	626974	7375746	0	0	29572	14	210	7	20	5.62	19	126	98	22
SWS0501	627009	7375781	0	0	36311	16	279	8	22	5.83	18	581	107	23
SWS0502	627045	7375816	0	0	24911	11	310	5	16	3.72	14	232	70	18
SWS0503	627080	7375852	0	0	30797	23	278	4	15	4.29	13	304	92	15
SWS0504	627115	7375887	0	0	14326	0	138	2	7	1.66	8	81	28	7
SWS0505	627221	7375993	0	0	23641	0	160	3	11	2.54	10	69	46	9
SWS0506	627257	7376029	0	0	31159	0	194	4	14	3.31	14	77	55	13
SWS0507	627292	7376064	0	0	34747	11	250	4	15	4.55	18	79	78	14
SWS0508	627328	7376099	0	0	21006	0	227	2	10	3.03	12	76	50	8
SWS0509	627363	7376135	0	0	27591	0	200	3	12	3.27	13	69	57	10
SWS0510	627398	7376170	0	0	44672	10	354	5	18	4.27	16	620	77	16
SWS0511	627434	7376205	0.01	0	49568	10	1905	5	20	4.85	27	940	90	18
SWS0512	627469	7376241	0	0	20846	0	255	3	11	3.91	16	124	67	8
SWS0513	627504	7376276	0	0	26326	0	160	3	12	3.21	13	68	53	11

SWS0514	627540	7376311	0	0	26948	0	176	3	12	3.83			15	0	64	12
SWS0515	627575	7376347	0	0	30980	15	383	4	16	6.85			24	112	106	15
SWS0516	627610	7376382	0.02	0	55201	17	566	6	21	7.16			25	323	116	21
SWS0517	627646	7376418	0	0	46582	14	311	6	20	6.45			23	328	112	20
SWS0518	627681	7376453	0.01	0	39587	14	244	5	19	5.84			22	251	105	17
SWS0519	627716	7376488	0	0	41258	16	494	5	19	6.86			25	197	117	18
SWS0520	627752	7376524	0	0	47710	0	487	4	16	4.15			18	197	77	15
SWS0521	627787	7376559	0	0	14960	0	103	2	8	2.04			8	0	36	6
SWS0522	632628	7372193	0	0	19059	0	162	2	7	2.15			10	61	37	7
SWS0523	629921	7373759	0	0	20704	53	115	8.4	22.1	5.44	7.3	9.81	21.8	0	62	30
SWS0524	629887	7373726	0	0	22673	58	260	8.2	25.5	6.03	8.25	11.09	27.1	0	67	32
SWS0525	629853	7373689	0	0	9234	10	92	1.9	6.6	0.75	2.6	3.49	28.3	800	19	8
SWS0526	629817	7373656	0	0	11537	9	45	2.7	9	1.27	2.85	3.83	9	22600	32	13
SWS0527	629799	7373640	0	0	19714	16	73	5.3	28	4.44	7.45	10.01	50	14100	66	37
SWS0528	629779	7373623	0	0.05	30560	151	64	7.8	26.5	7.8	10.64	14.3	25.4	5400	77	44
SWS0529	629765	7373603	0.02	0	34316	158	174	6	22.5	7.53	11.21	15.07	25.4	900	71	33
SWS0530	629747	7373587	0.04	0.06	46234	349	156	5.4	22.2	6.66	12.89	17.33	27.3	600	74	31
SWS0531	629728	7373568	0.08	0.12	36738	321	118	6.9	23	6.3	10.8	14.52	31.6	0	72	50
SWS0532	629710	7373556	0.04	0.09	38333	217	93	10.9	30.1	6.51	11.08	14.89	29	0	72	64
SWS0533	629693	7373533	0.03	0.08	37423	273	69	10.7	30.9	6.65	11.36	15.27	31	0	76	80
SWS0534	629675	7373515	0.01	0	37266	58	132	13.2	31.7	4.99	10.46	14.06	22.4	1100	63	60
SWS0535	629658	7373498	0	0	28669	72	133	10.9	29.1	5.66	10.35	13.91	20.6	1200	73	53
SWS0536	629640	7373481	0	0	22806	38	133	10.1	29.6	4.41	7.56	10.16	20.2	1800	54	46
SWS0537	629603	7373447	0	0	23163	13	118	12.6	30.3	3.99	6.84	9.19	17.5	2300	45	49
SWS0538	629567	7373411	0	0	18844	17	141	12.4	30.8	4.13	6.04	8.12	19.6	0	45	43
SWS0539	629537	7373372	0	0	10414	11	88	9.4	21.4	2.79	3.33	4.48	16.8	0	29	31
SWS0540	629499	7373339	0	0	8839	12	116	12	22.7	3.27	3.14	4.22	21.4	0	32	32
SWS0541	629463	7373302	0	0	17639	8	111	11.9	26.8	3.84	5.64	7.58	16.9	1600	42	48
SWS0542	629428	7373267	0	0	19657	10	157	11.7	27.1	3.47	5.67	7.62	17.9	900	39	41
SWS0543	629391	7373233	0	0	10453	8	124	8	20.4	3.27	3.43	4.61	15.9	0	35	27
SWS0544	629358	7373198	0	0	11693	9	110	9.6	24.2	3.16	3.95	5.31	16.5	3600	33	34

SWS0545	629322	7373163	0	0	27146	10	149	11.2	28	3.54	7.21	9.69	21	0	43	45
SWS0546	629287	7373127	0	0	15328	17	184	7	40.4	2.63	4.28	5.75	30.8	5800	35	24
SWS0547	629251	7373091	0	0.07	15012	20	77	3	18.1	2.43	3.6	4.84	50.1	0	24	25
SWS0548	629214	7373054	0	0	14476	15	140	11.3	28	5.21	5.21	7	34.6	0	56	33
SWS0549	629179	7373020	0	0	28399	19	93	9.3	31.7	5.33	8.29	11.14	31.7	0	68	46
SWS0550	629144	7372985	0	0	11720	19	140	4	24.6	5.06	4.66	6.26	27.6	0	57	25
SWS0551	628937	7373050	0	0	14405	13	272	19.9	28.6	4.99	4.83	6.49	32.7	0	42	41
SWS0552	628972	7373086	0	0	10330	12	233	15.9	27.7	4.96	3.76	5.05	37.1	0	31	38
SWS0553	629006	7373123	0	0	16756	20	175	13.8	30.8	5.86	5.32	7.15	60.6	0	43	48
SWS0554	629044	7373157	0	0.14	15042	24	87	2.2	21	2.91	4.34	5.83	32.5	2200	21	26
SWS0555	629078	7373192	0	0	17565	21	103	9.1	28.2	7.86	4.87	6.55	40.3	0	40	62
SWS0556	629114	7373225	0	0	12854	26	118	7.8	32.5	6.89	4.06	5.46	34.2	0	38	78
SWS0557	629149	7373263	0.09	0	22640	14	97	9.9	28.5	4.14	6.14	8.25	25.4	500	47	38
SWS0558	629183	7373297	0	0	8962	11	105	6.7	22.2	3.26	3.13	4.21	23.2	0	35	26
SWS0559	629221	7373334	0	0	11317	11	104	11.4	24.4	3.13	3.63	4.88	25.5	0	32	33
SWS0560	629256	7373369	0	0	11898	9	87	10.6	23.9	3.17	3.74	5.03	16.9	0	34	35
SWS0561	629291	7373406	0	0	10325	8	104	8.4	20.6	2.97	3.57	4.8	18.8	0	30	31
SWS0562	629326	7373440	0	0	9039	9	95	11.5	22.1	2.92	2.92	3.93	18.8	0	29	31
SWS0563	629361	7373476	0	0	6822	9	73	10.7	20.4	2.66	2.7	3.63	20	900	27	30
SWS0564	629398	7373512	0	0	10049	10	70	9.6	22.4	2.7	3.33	4.48	15.7	0	27	32
SWS0565	629432	7373545	0	0	16117	8	96	11.3	25	3.68	5.22	7.02	16.4	3400	42	44
SWS0566	629468	7373580	0	0	19883	18	113	10.4	23.9	3.64	6.5	8.74	14	13600	46	42
SWS0567	629486	7373601	0	0	21527	19	105	12.2	26.8	3.86	6.78	9.11	17.4	5500	45	51
SWS0568	629503	7373616	0	0	15030	11	121	8.9	24.8	3.69	5.01	6.73	16.8	0	41	36
SWS0569	629523	7373636	0.01	0	34395	94	99	10.3	24.6	5.72	16.16	21.72	17.7	4200	111	42
SWS0570	629538	7373651	0	0	5531	17	129	11.1	21.7	2.95	2.42	3.25	20	0	25	26
SWS0571	629555	7373529	0	0	8728	11	108	8.9	21.7	3.12	3.21	4.31	15.7	0	31	28
SWS0572	629506	7373893	0	0	4453	9	104	5.2	12	2.29	2.16	2.9	12	0	30	13
SWS0573	629471	7373858	0	0	8102	11	80	7.2	16	2.9	3.18	4.27	14.1	0	34	23
SWS0574	629453	7373840	0	0	15404	16	852	35.1	22	1.94	4.96	6.67	9	0	60	183
SWS0575	629435	7373822	0.01	0	14845	5	73	2.9	5	1.32	4.52	6.08	8.4	12300	30	7

SWS0576	629418	7373805	0	0	24276	112	310	5	11.7	5.2	11.93	16.04	14.9	3600	75	17
SWS0577	629400	7373787	0.01	0	16929	24	66	7	21.1	3.8	6.77	9.1	13.7	29100	59	29
SWS0578	629382	7373769	0	0	17506	13	108	11	23.7	3.57	5.32	7.15	16.9	900	43	40
SWS0579	629365	7373751	0	0	19003	15	93	11.4	24	3.46	5.58	7.5	15.9	3200	41	46
SWS0580	629347	7373734	0	0	14992	18	106	9.7	21.2	3.28	4.85	6.52	15.6	0	41	35
SWS0581	629329	7373716	0	0	8135	10	67	10.5	22.5	2.64	2.82	3.79	16.4	1000	26	32
SWS0582	629312	7373698	0	0	19896	10	83	13.3	27.7	3.76	6.31	8.48	16.8	2100	43	46
SWS0583	629294	7373681	0	0	11549	9	88	10.3	21.3	2.73	3.73	5.01	17.3	3200	31	32
SWS0584	629259	7373645	0	0	21137	10	101	11.3	25.9	3.34	5.99	8.05	16.5	0	40	40
SWS0585	629223	7373610	0	0	22824	8	108	13.5	30.1	3.88	6.75	9.07	17.7	4100	42	57
SWS0586	629188	7373575	0	0	22279	8	116	11.9	27.6	3.86	6.65	8.94	17.9	5800	44	49
SWS0587	629153	7373539	0	0	14691	8	103	10.3	22.7	3.15	4.78	6.43	15.4	1500	37	38
SWS0588	629117	7373504	0	0	11140	10	78	14.7	26	3.04	3.88	5.22	19.6	0	32	37
SWS0589	629082	7373469	0	0	14225	9	94	10.9	24.8	3.52	4.94	6.64	19.3	4000	45	43
SWS0590	629011	7373398	0	0	14383	9	98	12.8	25.1	3.03	4.33	5.82	19.1	0	32	36
SWS0591	628976	7373363	0	0	19538	9	112	12	27.2	3.78	5.75	7.73	17.6	0	42	47
SWS0592	628940	7373327	0	0	12160	18	250	17.5	30.6	5.51	3.92	5.27	62	0	34	51
SWS0593	628905	7373292	0	0	15510	16	104	14.6	29.6	4.53	5.16	6.94	24.9	0	49	42
SWS0594	628870	7373256	0	0	12488	46	102	5	35.2	1.86	2.98	4.01	25.5	8600	14	26
SWS0595	628834	7373221	0.01	0	19486	38	170	37.7	34.9	4.45	5.68	7.64	43.4	2300	40	51
SWS0596	628799	7373186	0	0	20506	13	143	12.7	30.4	4.31	5.96	8.01	29.7	1500	40	45
SWS0597	628764	7373150	0	0	12291	12	168	14.2	26.1	4.25	4.14	5.56	36.6	1400	31	39
SWS0598	629054	7373987	0	0	16381	9	126	11.8	26.3	3.77	5.03	6.76	17.5	0	39	41
SWS0599	629018	7373951	0	0	16467	9	98	11.2	25.9	3.58	5.21	7	17	0	42	41
SWS0600	628983	7373916	0	0	14198	9	135	11.2	25.2	3.36	4.58	6.16	17.6	0	39	38
SWS0601	628948	7373881	0	0	21112	9	113	12.7	30.4	4.05	6.19	8.32	17.9	4300	43	48
SWS0602	628912	7373845	0	0	14045	10	86	10.8	24.8	3.22	4.58	6.16	16.4	1700	37	36
SWS0603	628877	7373810	0	0	21582	8	126	11.8	27.3	3.8	6.68	8.98	16.7	700	45	47
SWS0604	628842	7373775	0	0	16966	8	95	12.8	28.4	3.78	5.55	7.46	16	11000	38	57
SWS0605	628806	7373739	0	0	17069	10	96	11.7	24.9	3.27	5.21	7	17	8900	36	45
SWS0606	628771	7373704	0	0	18190	8	123	12	25.8	3.7	5.64	7.58	16	4100	42	48

SWS0607	628736	7373669	0	0	15753	8	107	10.6	24.2	3.55	5.15	6.92	14.9	0	46	42
SWS0608	628700	7373633	0	0	15873	10	101	10.2	23.3	3.38	4.99	6.71	13.6	9900	51	43
SWS0609	628665	7373598	0	0	18368	7	116	10.7	24.4	3.66	5.67	7.62	15.3	0	46	42
SWS0610	628629	7373563	0	0	11747	7	69	9.4	21.7	3.29	4.1	5.51	16.4	2500	37	36
SWS0611	628594	7373527	0	0	15423	9	90	10.9	22.8	3.34	4.76	6.4	16.9	0	40	37
SWS0612	628559	7373492	0	0	16704	8	102	10.3	22.2	3.08	5.01	6.73	14.9	0	39	35
SWS0613	628523	7373456	0	0	17840	7	91	10.5	23.2	3.47	5.56	7.47	14.3	9400	45	45
SWS0614	628488	7373421	0	0	10081	4	70	5.2	12.4	2.42	3.48	4.68	8.6	0	37	18
SWS0615	628453	7373386	0	0	8415	7	81	7.4	16.2	2.82	3.22	4.33	13.9	0	34	23
SWS0616	628318	7373798	0	0	7301	10	82	10.5	20	3.16	3.01	4.05	18	0	38	30
SWS0617	628283	7373763	0	0	16014	8	100	11	25.3	3.67	5.04	6.77	16.2	0	43	43
SWS0618	629730	7373711	0	0	28870	69	106	10.8	26.3	5.72	10.36	13.93	21.2	7100	69	44
SWS0619	629713	7373692	0.01	0	37630	101	59	7.3	18.9	5.45	12.5	16.8	21.4	0	74	31
SWS0620	629696	7373670	0.02	0	40431	89	92	8.3	22.4	4.89	11.69	15.71	20.1	0	69	32
SWS0621	629678	7373655	0.01	0	40387	122	83	6.5	17.9	4.2	10.99	14.77	15.7	0	72	26
SWS0622	629659	7373636	0.06	0	34889	204	433	5.8	17.5	3.82	10.38	13.95	12.9	600	72	24
SWS0623	629644	7373620	0.25	0.06	27713	445	297	3.8	14.3	3.23	7.59	10.2	12.7	1100	68	25
SWS0624	629626	7373601	0.16	0.1	39249	474	252	3	11.3	5.1	15.74	21.16	12.9	1400	98	15
SWS0625	629607	7373582	0.01	0	31589	67	106	12.4	28.1	4.35	9.43	12.68	20.7	8500	58	55
SWS0626	629591	7373566	0.01	0	29039	76	117	11.6	30.2	4.85	9.29	12.49	19.4	0	63	53
SWS0627	629571	7373548	0.01	0	12257	33	129	9.6	23.2	3.49	4.44	5.97	17.5	0	37	31
SWS0628	629555	7373667	0.1	0.06	33006	201	88	11.4	28.8	6.34	11.21	15.07	18.8	0	85	50
SWS0629	629575	7373686	0.14	0	24893	196	162	5.9	17.1	3.62	7.83	10.53	10.7	500	69	24
SWS0630	629592	7373703	0.03	0.15	38372	181	134	2.5	26.2	6.54	14.75	19.83	68.4	3300	81	29
SWS0631	629607	7373721	0.01	0	29566	111	116	12.2	24.6	4.82	9.37	12.6	21	4400	70	39
SWS0632	629624	7373740	0.01	0.11	43216	304	332	5.7	18.3	10.56	21.73	29.21	33.7	800	205	39
SWS0633	629645	7373758	0	0	17257	32	118	9.4	23.6	4.39	5.93	7.97	21.4	0	55	36
SWS0634	629679	7373793	0	0	16350	35	102	9.6	23.1	4.3	5.64	7.58	22.3	0	48	37
SWS0635	629714	7373827	0	0	13768	18	106	7.8	19.8	3.67	4.72	6.34	15.3	0	47	29
SWS0636	629752	7373864	0	0	5255	13	113	6.6	14.4	2.97	2.66	3.58	17.4	0	40	15
SWS0637	629783	7373898	0	0	10792	8	85	6.4	15.6	2.96	3.75	5.04	12.8	0	40	21

SWS0638	630096	7373663	0	0	5879	17	159	8	17.6	4.06	3.52	4.73	22.7	0	60	17
SWS0639	630063	7373627	0	0	38445	26	1035	3.8	16.1	5.18	17.45	23.46	14.6	1400	108	6
SWS0640	630025	7373592	0	0	21984	31	93	8	21.2	6.27	11.38	15.3	17.3	0	98	28
SWS0641	629990	7373557	0.01	0	46273	64	691	5.5	17.1	7.19	13.85	18.62	16.2	0	91	18
SWS0642	629973	7373537	0.01	0	33022	44	259	5	16.6	5.11	10.39	13.97	12.5	1200	64	17
SWS0643	629955	7373523	0.01	0	32524	89	60	7.8	22.7	8.4	11.39	15.31	22.8	0	92	35
SWS0644	629938	7373504	0.01	0	53920	206	362	7.6	19.6	10	16.41	22.06	30.3	0	123	29
SWS0645	629918	7373485	0.01	0	50321	254	693	6.5	17.7	9.1	15.5	20.84	14.8	0	118	29
SWS0646	629903	7373469	0.01	0	59799	196	1069	3.2	11.3	8.81	15.59	20.96	16.3	0	91	10
SWS0647	629883	7373451	0	0.05	75198	111	440	5.4	15.5	5.95	19.35	26.01	17.3	0	102	22
SWS0648	629862	7373430	0	0	63834	110	91	7	19	8.08	22	29.57	21.2	800	142	28
SWS0649	629850	7373417	0	0	31292	45	105	8.3	21.5	6.08	10	13.44	15.8	0	75	40
SWS0650	629831	7373397	0	0	53157	88	83	8.2	22.4	7.43	18.14	24.38	20.3	0	122	40
SWS0651	629813	7373382	0	0	29188	25	120	9.3	26.7	4.55	8.85	11.9	18.3	0	63	39
SWS0652	629916	7373212	0	0	15925	15	112	8.6	24.6	3.98	5.44	7.31	17.2	0	49	35
SWS0653	629953	7373245	0	0	23289	15	97	2	7.5	1.26	5.26	7.07	40	2600	24	18
SWS0654	629986	7373283	0	0	19476	145	82	7.7	24.5	5.51	6.79	9.13	16.6	9200	64	49
SWS0655	630006	7373300	0	0	21526	96	81	9.1	29.2	6.12	7.23	9.72	18.5	0	60	58
SWS0656	630023	7373316	0	0	27813	49	35	1.8	9	2.38	8.14	10.94	16.6	36900	42	16
SWS0657	630040	7373334	0	0	30271	17	29	1.7	2.6	0.6	5.91	7.94	26.5	1400	26	7
SWS0658	630058	7373352	0	0	25496	109	62	5.4	37.4	9.98	7.6	10.22	18	1200	53	51
SWS0659	630075	7373368	0	0	26949	145	57	11.3	34.2	6.76	8.46	11.37	22.3	1700	64	60
SWS0660	630093	7373385	0	0	17233	62	51	5.4	39.1	5.98	5.57	7.49	21.3	13900	47	92
SWS0661	630113	7373405	0	0	25798	24	52	13.1	31.7	5.82	7.9	10.62	24.1	3400	61	52
SWS0662	630127	7373422	0	0	20818	12	61	5.9	20.3	3.7	5.55	7.46	20.6	0	39	26
SWS0663	630146	7373440	0	0	18023	25	155	3.2	15.2	6	5.42	7.29	15.2	8700	37	12
SWS0664	630165	7373459	0	0	26516	19	326	4	16.8	5.29	7.41	9.96	12.6	1400	45	12
SWS0665	630200	7373493	0	0	20742	18	202	5.5	15.3	3.24	7.32	9.84	12.2	700	54	15
SWS0666	630235	7373528	0	0	19184	9	116	10.9	24.7	3.69	5.5	7.39	16	2000	44	45
SWS0667	630270	7373565	0	0	14824	8	104	11	25.7	3.72	4.84	6.51	17	0	39	43
SWS0668	630620	7373640	0	0	14538	8	96	6	16.3	3.07	4.91	6.6	12.4	0	50	19

SWS0669	630584	7373605	0	0	6432	11	128	7.8	15.1	3.21	3.06	4.11	16.7	0	48	15
SWS0670	630549	7373570	0	0	15576	8	106	10.8	24.7	3.74	5.13	6.9	16.8	0	45	36
SWS0671	630514	7373534	0	0	14619	8	100	10.1	24.3	3.63	4.81	6.47	16.5	0	43	39
SWS0672	630478	7373499	0	0	14680	8	88	12.8	27.2	3.84	4.93	6.63	16.4	2600	41	51
SWS0673	630443	7373464	0	0	18237	8	132	12.1	26.6	3.8	5.8	7.8	20.6	1600	45	44
SWS0674	630408	7373428	0	0	16065	10	102	14.4	26.2	3.85	5.4	7.26	19.2	3100	45	43
SWS0675	630372	7373393	0	0	17981	10	96	11.4	27.6	3.96	5.48	7.37	17.3	2100	51	48
SWS0676	630337	7373358	0	0	13216	10	70	11.5	25.5	3.71	4.5	6.05	15.6	8500	40	43
SWS0677	630319	7373340	0	0	26281	9	112	14	30	4.19	7.27	9.77	18.9	1500	48	60
SWS0678	630301	7373322	0	0	18070	10	95	13.2	28.4	4.26	5.86	7.88	17.3	5700	43	53
SWS0679	630284	7373305	0	0	24956	11	102	13.4	30.2	4.23	7.24	9.73	16.7	11900	48	58
SWS0680	630266	7373287	0	0	17588	10	80	12.5	27.5	3.97	5.51	7.41	16.2	12200	41	50
SWS0681	630248	7373268	0	0	17283	12	95	10	23.7	3.84	5.5	7.39	15.2	0	46	39
SWS0682	630231	7373250	0	0	17227	20	97	8	21.9	4.17	5.62	7.55	14.1	0	51	29
SWS0683	630210	7373234	0.01	0	40253	57	847	4.2	20	4.83	7.43	9.99	10.2	600	50	14
SWS0684	630196	7373214	0	0	41879	65	125	3.7	29.9	5.62	10.68	14.36	11.1	4800	50	12
SWS0685	630178	7373198	0.01	0	48044	62	882	4	16.2	3.88	9.07	12.19	8.6	800	55	13
SWS0686	630161	7373178	0	0	33748	44	114	6.4	20	4.47	9.44	12.69	14.3	500	66	26
SWS0687	630124	7373146	0	0	13198	10	61	1.6	6.2	1.15	3.41	4.58	9.2	0	21	7
SWS0688	630091	7373111	0	0	15118	13	104	13.1	28.2	4.24	5.11	6.87	24.3	1300	45	40
SWS0689	630054	7373074	0	0	9243	15	95	12.5	24.4	2.94	3.19	4.29	21.4	0	29	35
SWS0690	630019	7373038	0	0	14926	16	113	12.6	25.6	3.4	4.73	6.36	20.7	700	38	35
SWS0691	629984	7373001	0	0	16553	29	88	7.2	23.1	2.6	5.16	6.94	13.9	22800	48	22
SWS0692	629947	7372968	0	0	17049	31	120	8.9	42.6	3.03	5.44	7.31	24.9	6500	41	26
SWS0693	629912	7372934	0	0	16817	18	114	12.9	44.2	4.33	5.91	7.94	31.9	3500	53	45
SWS0694	629878	7372899	0	0	15401	10	112	10.9	29.2	3.88	5.09	6.84	17.1	3400	42	38
SWS0695	629635	7372929	0	0	15871	12	141	12.4	28.7	5.17	5.85	7.86	19.9	0	60	36
SWS0696	629669	7372962	0	0	13050	12	132	14.5	31.3	4.1	4.33	5.82	19.3	0	39	39
SWS0697	629707	7372996	0	0	13116	9	116	10.4	26.7	3.73	4.39	5.9	16.5	0	37	34
SWS0698	629746	7373036	0	0	9981	23	353	48.2	56.2	6.94	4.73	6.36	46.7	0	53	73
SWS0699	629777	7373067	0	0	11376	10	117	14.5	29.4	3.73	3.9	5.24	18.6	0	31	41

SWS0700	629809	7373103	0	0	8712	10	112	14.5	28.4	3.47	3.19	4.29	18.9	0	28	37
SWS0701	629843	7373140	0	0	10799	10	117	12	27.6	3.9	3.79	5.09	17.7	0	34	37
SWS0702	629884	7373173	0	0	19482	19	123	12.1	29.7	4.09	6.45	8.67	18.6	8900	53	44
SWS0703	629778	7373344	0	0	27255	45	153	13.8	34.1	5.82	10.23	13.75	21.7	500	75	59
SWS0704	629740	7373309	0	0	21884	18	166	15.7	32.2	4.42	7.49	10.07	19.5	7400	52	50
SWS0705	629706	7373274	0	0	9325	10	80	10.8	21.4	2.75	3.1	4.17	17.5	0	28	30
SWS0706	629673	7373239	0	0	8594	10	83	13.6	23.8	3.03	3.25	4.37	17.4	0	31	33
SWS0707	629639	7373204	0	0.12	14466	9	104	12.2	25	3.64	4.81	6.47	16.5	3900	39	40
SWS0708	629602	7373169	0	0.06	7125	11	76	13	22.6	2.79	2.55	3.43	17.2	0	26	30
SWS0709	629567	7373134	0	0.1	14491	12	139	18	32.4	3.93	4.71	6.33	20.2	2200	35	46
SWS0710	629531	7373098	0	0	13399	10	102	11.4	25.8	3.66	4.53	6.09	16.5	1700	37	38
SWS0711	629494	7373063	0	0	5960	7	90	5.3	17.4	3.16	2.25	3.02	11.4	0	31	22
SWS0712	629460	7373027	0	0	14482	20	179	7.9	22.9	2.97	4.86	6.53	20.7	2400	48	24
SWS0713	629425	7372991	0	0	12344	19	158	8.7	31	3.57	4.19	5.63	39.1	0	47	27
SWS0714	629389	7372956	0	0	10921	33	144	8.1	43.8	3.21	3.55	4.77	52.2	700	46	23
SWS0715	630157	7372904	0	0	27039	25	87	6	46.5	10.73	13.08	17.58	19.8	1500	113	23
SWS0716	630192	7372939	0	0	16179	9	105	11.6	26.6	3.8	5.19	6.98	16.1	13400	39	44
SWS0717	630227	7372975	0	0.18	10434	9	73	10.7	23.2	3.05	3.68	4.95	16.5	0	34	33
SWS0718	630263	7373010	0	0	8630	8	80	10.7	21.8	3.17	3.15	4.23	15	0	32	32
SWS0719	630298	7373045	0	0	16113	9	103	11.9	26.8	3.58	4.89	6.57	17.3	6900	39	43
SWS0720	630333	7373081	0	0	9556	9	82	10.8	23.8	3.21	3.24	4.36	16.2	600	32	35
SWS0721	630369	7373116	0	0	12572	10	73	12.1	24.7	3.38	4.33	5.82	18.8	1800	34	36
SWS0722	630404	7373151	0	0	9443	12	91	13.2	24.9	3.4	3.55	4.77	20.5	0	33	35
SWS0723	630439	7373187	0	0	13814	9	86	13.3	26.5	3.74	4.76	6.4	16.6	4600	35	44
SWS0724	630475	7373222	0	0	16302	8	97	13.3	27.7	3.96	5.4	7.26	19.2	1100	39	46
SWS0725	630510	7373258	0	0	15407	8	102	13	27.6	3.83	5.37	7.22	16.7	3600	36	47
SWS0726	630545	7373293	0	0	12735	8	108	11.4	24.3	3.62	4.61	6.2	16.1	3700	36	40
SWS0727	630581	7373328	0	0	14942	8	80	13.2	26.6	3.72	5.23	7.03	17.7	1600	37	48
SWS0728	630616	7373364	0	0	10844	7	86	9.3	17.1	2.89	3.96	5.32	12.9	3700	38	25
SWS0729	630651	7373399	0	0	16641	8	118	14.1	26.8	3.98	5.8	7.8	18.3	1000	40	47
SWS0730	630687	7373434	0	0	18544	8	80	11.5	26.3	3.61	6.16	8.28	17.1	21000	38	48

SWS0731	630722	7373470	0	0	15541	9	113	14.1	25.1	3.93	5.62	7.55	19.1	3500	42	39
SWS0732	630758	7373505	0	0	14808	12	124	12.8	25	4.01	5.74	7.72	17.9	0	49	34
SWS0733	630793	7373540	0	0	19063	16	56	1.9	15.9	2.39	7.48	10.05	24.6	2800	48	3
SWS0734	631055	7373392	0	0	15063	8	100	12.2	24.8	3.7	5.44	7.31	16.8	0	42	39
SWS0735	631017	7373355	0	0	17419	8	101	13.8	26.9	3.84	5.73	7.7	17.4	2400	37	49
SWS0736	630982	7373320	0	0	7573	10	73	12	23.3	2.76	2.93	3.94	20.5	1100	24	32
SWS0737	630947	7373284	0	0	16833	8	113	12	25.8	3.68	5.55	7.46	16.8	8400	36	45
SWS0738	630911	7373249	0	0	17495	9	112	13.3	28.5	3.68	6	8.07	18.6	1100	40	46
SWS0739	630876	7373214	0	0	13494	9	80	12.6	27.9	3.89	4.99	6.71	19	0	38	41
SWS0740	630841	7373178	0	0	7941	9	76	12.2	22.4	2.86	2.95	3.97	19.4	1500	25	32
SWS0741	630805	7373143	0	0	11739	8	79	10.6	24.7	3.74	4.43	5.95	15.7	1000	36	39
SWS0742	630770	7373108	0	0	12139	9	84	10.3	24.6	3.86	4.52	6.08	16	6700	39	39
SWS0743	630735	7373072	0	0	12569	8	77	11.5	25	3.18	4.32	5.81	16.6	2800	29	40
SWS0744	630699	7373037	0	0	8298	9	78	11.6	24	3.08	3.33	4.48	17.5	900	29	33
SWS0745	630664	7373001	0	0	14774	11	76	14.4	30.4	3.91	5.58	7.5	22.3	800	43	42
SWS0746	630628	7372966	0	0	6311	8	71	9.7	20.3	3.04	2.72	3.66	14.8	0	29	26
SWS0747	630593	7372931	0	0	10485	8	77	10.2	22.6	3.22	3.83	5.15	15.7	0	34	32
SWS0748	630558	7372895	0	0	12635	7	74	10.3	22	3.22	4.53	6.09	16	0	37	35
SWS0749	630796	7372591	0	0	12757	9	70	10.9	24.7	3.5	4.63	6.22	16	0	37	35
SWS0750	630834	7372626	0	0	10943	9	80	12.6	25.3	3.49	4.16	5.59	16.5	0	33	38
SWS0751	630870	7372659	0	0	11769	9	113	13	25.9	3.44	4.17	5.61	17.2	0	37	35
SWS0752	630903	7372696	0	0	11718	8	71	10.8	26.3	3.39	4.13	5.55	15.1	0	34	39
SWS0753	630939	7372732	0	0	10588	9	87	11	25.2	3.4	4.06	5.46	17.2	0	34	35
SWS0754	630974	7372766	0	0	7826	9	86	11.3	22.7	3.13	3.26	4.38	16.1	0	29	30
SWS0755	631011	7372802	0	0	8216	8	78	10.3	21.6	3.16	3.28	4.41	15.6	0	30	30
SWS0756	631046	7372838	0	0	11631	9	70	12.1	25.9	3.79	4.48	6.02	17.2	0	36	39
SWS0757	631081	7372874	0	0	6022	9	72	11.4	22.6	3	2.54	3.41	17.1	0	24	31
SWS0758	631118	7372907	0	0	11380	8	94	11.5	25.3	3.61	4.34	5.83	17.4	0	35	36
SWS0759	631153	7372944	0	0	13276	8	96	12.8	27.2	3.68	4.65	6.25	16.8	1600	31	43
SWS0760	631187	7372977	0	0	10602	8	86	11.1	24.8	3.64	4.09	5.5	16.3	700	34	38
SWS0761	631225	7373016	0	0	7665	12	98	15.6	26.5	3.49	3.29	4.42	23.2	0	30	36

SWS0762	631258	7373051	0	0	6729	9	74	11.6	22.9	3.06	2.77	3.72	18	0	25	32
SWS0763	631291	7373085	0	0	10310	9	67	11.5	24.3	3.77	4.3	5.78	17.6	0	38	33
SWS0764	631330	7373119	0	0	14892	9	104	10	21.5	4.96	6.14	8.25	17	0	61	28
SWS0765	631362	7373156	0	0	13571	12	130	15.4	25.9	5.55	5.93	7.97	21.9	0	58	35
SWS0766	631399	7373191	0	0	9475	9	83	12	24.4	3.48	3.75	5.04	19.4	0	33	32
SWS0767	631748	7372992	0	0	11091	15	274	5.2	14.5	6.19	6.13	8.24	22.9	0	105	12
SWS0768	631710	7372954	0	0	14425	10	113	7.4	17.6	4.14	5.66	7.61	13.5	9200	63	25
SWS0769	631672	7372920	0	0	7892	5	99	4	10.6	2.92	3.48	4.68	9.2	0	41	12
SWS0770	631636	7372886	0	0	11470	6	108	8	18.7	3.48	4.59	6.17	12.8	0	44	32
SWS0771	631603	7372849	0	0	7948	8	87	9.7	21.8	3.66	3.53	4.75	17.1	0	36	31
SWS0772	631568	7372814	0	0	6966	8	80	8.9	20.1	3.46	3.14	4.22	15.6	0	33	29
SWS0773	631533	7372772	0	0	3967	10	96	8.9	15.9	2.9	2.5	3.36	15.6	0	31	21
SWS0774	631496	7372744	0	0	10226	8	85	10.3	24	4.13	4.29	5.77	16.7	0	41	36
SWS0775	631461	7372707	0	0	11630	17	108	9.7	24.4	3.63	4.45	5.98	14.4	0	50	27
SWS0776	631429	7372672	0	0	9430	15	95	14.2	29.4	3.76	3.8	5.11	21.5	0	35	38
SWS0777	631391	7372638	0	0	4999	9	59	9.9	20.4	2.55	2.18	2.93	17.4	0	19	28
SWS0778	631356	7372599	0	0	14730	8	83	12.8	27.2	3.99	5.27	7.08	17.4	3100	37	45
SWS0779	631321	7372566	0	0	9435	11	84	13.1	26.6	3.58	3.7	4.97	19.6	0	31	38
SWS0780	631286	7372531	0	0	10280	9	80	12.2	25.9	3.6	3.98	5.35	17.4	0	32	38
SWS0781	631249	7372494	0	0	8682	11	76	13.8	27.1	3.78	3.54	4.76	20.1	0	33	38
SWS0782	631214	7372458	0	0	7897	11	92	15.4	26.4	3.39	3.49	4.69	20.5	0	29	34
SWS0783	631182	7372425	0	0	5139	13	97	18	26.4	3.45	2.49	3.35	23.7	0	28	34
SWS0784	631141	7372389	0	0	7563	8	50	7	18.1	3.56	3.38	4.54	12.4	0	39	20
SWS0785	631109	7372354	0	0	13399	9	79	9.8	22.5	4.11	5.48	7.37	15.3	0	56	27
SWS0786	631073	7372319	0	0	14996	10	104	11.9	24.6	5.28	6.42	8.63	16.5	0	69	27
SWS0787	631038	7372284	0	0	15379	8	462	11.9	22.3	4.91	6.43	8.64	16.2	0	61	25
SWS0788	631002	7372248	0	0	11815	9	84	10.7	22.9	4.81	5.49	7.38	14.3	0	60	23
SWS0789	630967	7372213	0	0	16321	12	136	11.6	25.8	5.54	6.92	9.3	17.6	0	74	29
SWS0790	630933	7372175	0	0	12601	10	143	11.9	27	4.89	5.67	7.62	21.1	0	55	34
SWS0791	630896	7372140	0	0	11950	12	178	11.9	28.2	4.7	5.09	6.84	26.4	0	45	36
SWS0792	630861	7372107	0	0	10933	10	130	9.7	27.6	4.08	4.21	5.66	19.3	0	40	31

SWS0793	630828	7372069	0	0	10369	13	230	13	29.3	4.17	4.82	6.48	22	1900	51	23
SWS0794	630962	7371658	0	0	13550	10	176	11.6	25.7	5.15	5.85	7.86	17.4	0	65	37
SWS0795	630995	7371695	0	0	12593	7	62	7.5	22.5	3.41	4.23	5.69	17.2	0	40	22
SWS0796	631033	7371733	0	0	14093	10	127	10.6	26.1	4.39	5.83	7.84	16.6	0	60	27
SWS0797	631067	7371767	0.01	0	17455	7	90	5	26.2	2.73	5.56	7.47	11.8	0	40	22
SWS0798	631101	7371801	0	0	16514	14	203	11.6	26.3	4.46	6.58	8.84	26.9	1400	69	49
SWS0799	631139	7371838	0	0	19552	10	98	12.5	29.6	5.35	7.83	10.53	16.7	0	79	36
SWS0800	631174	7371872	0	0	20328	12	1152	12.5	28.6	4.41	7.5	10.08	17.9	0	77	34
SWS0801	631206	7371908	0	0	15413	8	138	13.2	25.8	5.16	6.44	8.66	15.1	0	69	29
SWS0802	631244	7371941	0	0	15026	10	78	10.1	25.2	5.45	6.66	8.95	17.3	0	74	26
SWS0803	631279	7371977	0	0	12856	8	97	13.1	24.2	5.05	5.61	7.54	15.7	0	65	28
SWS0804	631314	7372014	0	0	12859	9	69	12.6	23.6	5.1	5.9	7.93	16.5	0	65	27
SWS0805	631348	7372048	0	0	12750	8	134	12.4	24.7	5.12	5.89	7.92	15.2	0	64	30
SWS0806	631385	7372085	0	0	13369	10	133	15.4	29.7	5.12	5.93	7.97	19	0	58	38
SWS0807	631418	7372117	0	0	6684	12	89	15.8	26.6	3.37	2.96	3.98	21.2	0	26	34
SWS0808	631455	7372152	0	0	12867	14	142	15	29.6	4.83	5.58	7.5	25.2	0	54	37
SWS0809	631491	7372191	0	0	7463	10	84	12.4	23	3.4	3.09	4.15	17.5	900	30	33
SWS0810	631526	7372224	0	0	5072	11	72	12.4	22.9	2.87	2.23	3	17.7	0	23	31
SWS0811	631562	7372259	0	0	5873	10	75	13.4	23.9	2.69	2.52	3.39	19.8	0	21	32
SWS0812	631595	7372296	0	0	6822	10	76	12.3	24.9	3.26	2.93	3.94	17.8	0	28	33
SWS0813	631637	7372330	0	0	6061	10	93	12.9	23.4	3.47	3.06	4.11	21.3	0	32	34
SWS0814	631702	7372400	0	0	8281	8	102	10.2	22.6	3.81	3.56	4.79	16.6	0	36	33
SWS0815	631230	7371363	0	0	10812	10	100	10.9	28	3.83	4.29	5.77	21.8	1600	31	42
SWS0816	631263	7371397	0	0	16761	9	83	12.7	29.5	3.81	5.62	7.55	17.6	5000	33	56
SWS0817	631299	7371434	0	0	14119	9	96	12.8	28.2	3.87	5.18	6.96	17.8	5200	33	48
SWS0818	631333	7371468	0	0	15308	9	83	11.8	28.9	4.45	5.61	7.54	19.7	0	51	34
SWS0819	631368	7371503	0	0	17037	11	125	14.5	29.9	5.17	6.78	9.11	18.4	0	63	35
SWS0820	631403	7371538	0	0	12830	14	345	13.6	29	5.68	6.3	8.47	23.1	0	65	34
SWS0821	631438	7371574	0	0	13581	10	91	13.2	27.7	4.23	5.22	7.02	17.9	0	42	45
SWS0822	631478	7371609	0	0	8052	8	88	10.5	24.1	3.96	3.73	5.01	16.7	0	37	37
SWS0823	631496	7371067	0	0	5389	14	87	17.5	27.9	3.35	2.64	3.55	23.6	0	26	36

SWS0824	631530	7371100	0	0	4933	12	113	13.5	24.5	2.93	2.34	3.15	18.7	0	22	31
SWS0825	631567	7371135	0	0	11067	9	77	12.4	25.6	3.66	4.1	5.51	16.4	0	34	41
SWS0826	631606	7371175	0.01	0	16603	9	416	9.7	27.7	4.1	5.82	7.82	16.7	0	47	35
SWS0827	631636	7371206	0	0	9656	11	119	15.2	27.4	5.17	4.75	6.38	18.2	0	58	32
SWS0828	631672	7371241	0	0	15518	10	141	11.3	32.7	4.32	5.94	7.98	18.3	0	51	33
SWS0829	631709	7371278	0	0	11239	9	112	13	25	3.87	4.4	5.91	17.4	2100	37	40
SWS0830	631744	7371312	0	0	9519	9	82	11	24.6	3.82	3.9	5.24	17.3	0	36	38
SWS0831	631779	7371349	0	0	6323	8	75	11.3	21	3.17	2.74	3.68	18.8	0	26	30
SWS0832	631818	7371385	0	0	4459	9	91	9.9	17.5	2.89	2.51	3.37	17.7	0	30	20
SWS0833	631851	7371418	0	0	7626	8	79	9.6	21.9	3.78	3.63	4.88	16.4	0	36	32
SWS0834	631884	7371454	0	0	13414	9	100	13.8	26.8	3.86	4.95	6.65	17.8	4700	35	45
SWS0835	631921	7371489	0	0	15733	8	106	13.7	28.4	4.08	5.39	7.25	17.8	0	36	49
SWS0836	631955	7371525	0	0	9586	8	84	11	23.4	3.36	3.53	4.75	16.3	1700	29	37
SWS0837	631992	7371561	0	0	18802	9	96	15.2	30	4.25	6.11	8.21	19.3	0	39	60
SWS0838	632026	7371596	0	0	12412	9	97	12.1	26.7	3.88	4.64	6.24	16.9	0	37	43
SWS0839	632061	7371630	0	0	11756	9	91	12.1	25.9	3.7	4.43	5.95	16.2	1200	36	42
SWS0840	632098	7371667	0	0	8906	9	74	12	24.2	3.39	3.48	4.68	17.1	1400	28	35
SWS0841	632133	7371703	0	0	11977	8	97	14.3	26	3.97	4.76	6.4	17.2	1000	39	39
SWS0842	632170	7371739	0	0	15808	9	115	14.4	29.2	4.11	5.62	7.55	17.4	0	39	52
SWS0843	632205	7371773	0	0	14645	9	99	14.1	27.6	3.97	5.39	7.25	17.2	0	37	47
SWS0844	632240	7371809	0	0	13670	9	103	15	26.3	3.75	5.03	6.76	17.8	0	39	41
SWS0845	632275	7371844	0	0	17245	9	102	15.6	29.4	4.2	6.19	8.32	18.5	1200	44	50
SWS0846	632310	7371876	0	0	15875	10	102	13.9	27.5	3.96	5.72	7.69	17.3	5600	45	48
SWS0847	632344	7371913	0	0	20101	10	104	15	31.5	4.33	7.09	9.53	18.5	3800	51	54
SWS0848	632380	7371949	0	0	16355	7	111	12.2	22.6	3.68	6.04	8.12	14.9	0	52	30
SWS0849	632418	7371987	0	0	15332	10	162	8.9	20.9	5.32	6.33	8.51	17.5	0	68	29
SWS0850	632451	7372019	0	0	21255	19	346	5.5	17.4	6.39	7.79	10.47	18	0	78	15
SWS0851	632488	7372058	0	0	21601	13	242	11.2	23.7	5.6	8.66	11.64	19.7	0	80	31
SWS0852	632522	7372092	0	0	4593	5	78	3.2	7.3	2	2.03	2.73	7.3	0	26	8
SWS0853	632555	7372127	0	0	4563	6	81	2.7	7.5	2.12	2.08	2.8	7	0	32	7
SWS0854	632591	7372163	0	0	6814	5	129	4.1	8.7	2.83	3.14	4.22	10.6	0	42	9

SWS0855	632359	7372494	0	0	13616	5	162	5.6	12.4	3	5.39	7.25	8.7	600	47	17
SWS0856	632322	7372458	0	0	11215	7	105	7.8	14.6	3.83	4.69	6.3	12.3	0	55	19
SWS0857	632289	7372424	0	0	6874	3	59	3	7.2	2.49	2.97	3.99	6.2	0	32	8
SWS0858	632253	7372386	0	0	8232	4	135	4.1	11	2.91	3.54	4.76	8.2	0	41	13
SWS0859	632091	7372790	0	0	17019	9	257	7.3	17.6	3.78	6.14	8.25	14	5900	62	19
SWS0860	632056	7372756	0	0	5963	5	114	3.2	8.1	2.88	2.88	3.87	9.3	0	41	8
SWS0861	632018	7372717	0	0	2829	5	93	1.8	4.6	1.91	1.49	2	6.8	0	25	3
SWS0862	631983	7372684	0	0	3007	4	64	2.2	5.5	1.58	1.56	2.1	5.5	0	21	5
SWS0863	631951	7372650	0	0	7737	5	87	5.3	13.1	2.96	3.42	4.6	9.9	0	41	16
SWS0864	631913	7372613	0	0	11091	5	72	6	12.4	2.99	4.4	5.91	8.8	0	43	16
SWS0865	631881	7372579	0	0	4548	7	78	4.6	8.9	2.63	2.36	3.17	9.2	0	36	9
SWS0866	631845	7372543	0	0.07	29111	39	382	5.4	15.3	8.76	16.25	21.84	7.6	1900	122	18
SWS0867	631809	7372507	0	0	9701	15	66	7.6	19.8	3.84	3.82	5.13	12.4	1000	44	25
SWS0868	631772	7372471	0	0.06	7778	35	68	1.5	7.6	1.43	8.3	11.16	5.5	19500	89	6
SWS0869	631737	7372434	0	0	15031	14	300	4.5	17.1	6.51	4.93	6.63	7.6	0	37	15
SWS0870	631511	7371646	0	0	4578	13	131	10.7	17.6	4.01	3.54	4.76	18.3	0	51	21
SWS0871	631547	7371682	0	0	5771	8	78	10.5	19.9	2.87	2.63	3.54	15	0	24	27
SWS0872	631583	7371714	0	0	7234	8	87	10.5	22.4	3.43	3.32	4.46	16.8	0	31	32
SWS0873	631617	7371750	0	0	7786	9	89	11.6	22.9	3.22	3.09	4.15	16.3	0	27	34
SWS0874	631655	7371786	0	0	9124	9	84	11.5	24.9	3.62	3.65	4.91	18	0	33	35
SWS0875	631690	7371822	0	0	5797	8	71	10.5	20.5	2.56	2.4	3.23	16.1	0	20	28
SWS0876	631722	7371856	0	0	7282	9	75	10.5	21.5	2.77	2.73	3.67	15.2	0	22	30
SWS0877	631759	7371890	0	0	8844	9	80	10.6	23.9	3.76	3.79	5.09	16.8	0	34	37
SWS0878	631795	7371926	0	0	5819	8	72	10.1	20.9	3.09	2.68	3.6	17.7	0	27	29
SWS0879	631830	7371936	0	0	8286	8	79	10.9	22.8	3.68	3.59	4.83	16.1	1000	34	34
SWS0880	631866	7371998	0	0	11338	9	103	12.8	24.1	3.53	4.25	5.71	18.7	0	34	36
SWS0881	631901	7372036	0	0	11887	9	107	13.7	25.9	4.02	4.63	6.22	18.1	0	39	37
SWS0882	631937	7372067	0	0	16927	8	100	12.4	26.2	3.77	5.59	7.51	16.6	5700	37	44
SWS0883	631940	7372105	0	0	16000	8	106	12.7	24.8	3.92	6.17	8.29	16.2	3400	50	37
SWS0884	632005	7372144	0	0	10828	9	106	13.3	25.3	3.59	4.06	5.46	18.2	0	34	36
SWS0885	632041	7372175	0	0	10554	8	79	11.1	23.2	3.74	4.09	5.5	15.1	2200	35	37

SWS0886	632079	7372212	0	0	11156	10	115	14.3	23.8	3.9	4.42	5.94	18.9	2000	40	35
SWS0887	632111	7372246	0	0	16915	8	311	3.7	13.8	3.35	6.26	8.41	12.8	6600	47	7
SWS0888	632147	7372280	0	0	7987	7	101	9	16.5	3.12	3.3	4.44	14.4	0	36	22
SWS0889	632183	7372317	0	0	12856	7	118	8.3	17.2	3.52	5.02	6.75	12.3	0	50	23
SWS0890	632217	7372350	0	0	9066	5	106	4.9	12.9	2.8	3.92	5.27	9.4	0	42	14
SWS0891	632846	7369253	0	0	16063	18	125	7.4	26.2	6.13	7.71	10.36	25.7	0	67	38
SWS0892	632884	7369286	0	0	40544	15	77	6.3	15.6	5.73	16.63	22.35	10.5	0	86	21
SWS0893	632917	7369322	0	0	18019	16	96	7.7	21	6.82	9.77	13.13	18.8	0	96	31
SWS0894	632952	7369357	0	0	15343	13	178	7.5	17.5	5.76	8.06	10.83	16.7	0	85	28
SWS0895	632988	7369392	0	0	19175	23	411	4.6	14.3	6.19	11.35	15.26	16	600	115	16
SWS0896	633027	7369429	0	0	17157	23	220	5.3	17.8	6.82	11.1	14.92	23	0	117	21
SWS0897	633056	7369466	0	0	19828	16	174	6.7	20.5	5.57	10.05	13.51	17	0	91	24
SWS0898	633094	7369499	0	0	18617	32	157	4.9	19.8	8.22	12.72	17.1	18.5	0	145	17
SWS0899	633421	7369271	0	0	22979	53	126	5.3	26.1	15.6	20.44	27.48	25.7	0	209	22
SWS0900	633388	7369233	0	0	18720	22	118	7.7	21.1	6.88	10.98	14.76	15.5	0	112	24
SWS0901	633353	7369199	0	0	17948	16	181	10.4	20.8	6.71	9.35	12.57	16.5	0	99	31
SWS0902	633317	7369162	0	0	23651	19	250	10.3	21.8	8.21	13.78	18.52	20.1	0	126	29
SWS0903	633282	7369129	0	0	47009	26	143	6.5	15.4	10	26.17	35.18	14.7	0	185	13
SWS0904	633247	7369093	0	0	54546	21	182	6.1	13.7	7.55	24.41	32.81	9.6	0	142	16
SWS0905	633209	7369055	0	0	41033	34	1176	5.8	11.7	9.35	23.97	32.22	16	0	173	13
SWS0906	633175	7369020	0	0	24518	42	91	2	11.4	10.08	19.98	26.86	15.2	2000	122	8
SWS0907	633501	7368793	0	0	21794	8	79	2.4	10.9	6.5	12.09	16.25	7.9	0	48	10
SWS0908	633539	7368828	0	0	18134	14	55	10.5	19.8	9.06	11.87	15.96	14.9	0	110	22
SWS0909	633574	7368862	0	0	24565	28	57	6.7	26.7	18.54	17.37	23.35	17.7	0	141	19
SWS0910	633611	7368900	0	0	16887	26	49	4.8	28	10.93	11.11	14.93	18.8	0	101	32
SWS0911	633646	7368935	0	0	28114	35	109	7.9	28.8	13.01	18.79	25.26	26.4	0	148	41
SWS0912	633680	7368969	0	0	22206	34	106	6.4	26.5	12.79	18.53	24.91	23.7	0	165	32
SWS0913	633716	7369007	0	0	24930	60	177	6.3	21.5	11.62	17.5	23.52	19.8	0	154	20
SWS0914	633751	7369039	0	0	20239	118	300	4.7	28.7	17.43	21	28.23	39.6	0	258	16
SWS0915	634078	7368814	0	0	25428	309	1031	5	16.3	13.02	15.04	20.22	14.3	0	135	12
SWS0916	634043	7368775	0	0	22464	68	105	4.8	15.7	6.99	9.12	12.26	12.1	0	65	17

SWS0917	634007	7368739	0	0	17414	67	74	5	22.1	10.91	11.69	15.71	15.4	0	110	19
SWS0918	633971	7368705	0	0	14507	21	114	6.2	38.3	8.41	6.95	9.34	15.5	0	63	27
SWS0919	633936	7368669	0	0	19987	7	244	1.6	21.3	10.27	4.89	6.57	24.1	6300	20	6
SWS0920	633901	7368631	0	0	11576	9	49	5.5	26.2	6.19	4.91	6.6	9.4	0	51	21
SWS0921	633866	7368600	0	0	12687	15	54	0.8	37.5	6.17	4.86	6.53	7.4	23500	16	57
SWS0922	633828	7368561	0	0	14431	18	54	1.6	29.7	8.12	3.41	4.58	4.5	33400	25	47
SWS0923	634158	7368334	0	0	11164	9	69	0.9	29.7	7.51	10.64	14.3	14.9	4000	62	28
SWS0924	634193	7368371	0	0	34939	7	67	2.4	9	4.69	18.34	24.65	7.8	0	95	10
SWS0925	634231	7368405	0	0	65007	14	47	0.6	5.8	6.55	25.89	34.8	11.1	0	147	4
SWS0926	634262	7368439	0	0	34197	19	133	7.3	20.6	10.32	13.51	18.16	13.3	0	101	28
SWS0927	634303	7368474	0	0	45307	12	73	5.4	14.3	7.13	17.68	23.77	10.8	0	107	18
SWS0928	634334	7368510	0	0	62253	46	978	5.8	14.8	8.93	19.24	25.86	10.3	0	155	15
SWS0929	634366	7368546	0	0	92831	62	1017	4.3	7.7	9.27	29.23	39.29	8.4	700	246	9
SWS0930	634404	7368580	0	0	31120	57	238	5.5	16.5	8.18	23.97	32.22	10.9	0	256	20
SWS0931	670102	7350499	0	0	7316	15	417	11	34.7	2.99	3.02	4.06	12.4	0	70	14
SWS0932	670200	7350493	0	0	12664	18	470	23.9	64.7	5.45	5.72	7.69	12	0	149	25
SWS0933	670305	7350492	0	0	17780	7	280	10.1	23.9	3.07	6.01	8.08	8.5	0	62	23
SWS0934	670398	7350492	0	0	5573	1	127	1.7	7.8	0.56	2	2.69	1.8	12000	9	4
SWS0935	670498	7350492	0	0	6341	2	130	4.2	9.7	1.46	2.14	2.88	4.3	0	20	9
SWS0936	670605	7350489	0	0	7060	9	84	8.5	20.2	2.84	2.92	3.93	9.7	0	50	11
SWS0937	670701	7350492	0	0	7206	9	94	7	21.5	2.08	2.56	3.44	9.4	0	34	12
SWS0938	670804	7350497	0	0	3557	1	64	3.2	3.4	2.24	1.53	2.06	4.8	0	20	6
SWS0939	671105	7350594	0.01	0.12	9218	31	61	25.4	209.2	2.03	4.34	5.83	66	1200	25	19
SWS0940	671203	7350590	0.01	0.1	15179	69	79	47.7	80.4	2.92	4.91	6.6	30.1	0	52	47
SWS0941	671198	7350690	0	0.07	5791	14	101	5.1	16.8	1.23	1.81	2.43	7.4	0	20	9
SWS0942	670998	7350594	0	0	6009	3	78	3.9	8.4	1.89	2.12	2.85	4.5	0	25	8
SWS0943	670901	7350597	0	0	9349	4	64	7.2	14.1	2.76	3.48	4.68	7.4	0	46	15
SWS0944	670798	7350591	0	0	6369	7	69	6.3	18.2	2.22	2.4	3.23	8.7	0	36	11
SWS0945	670699	7350589	0	0	8071	0	128	1.7	2.9	0.86	3.05	4.1	6.3	22800	11	7
SWS0946	670603	7350590	0	0	4448	0	24	2.6	4.2	0.51	1.41	1.9	2.7	14500	8	3
SWS0947	670503	7350593	0	0	4442	5	79	5.4	14.3	1.58	1.75	2.35	8.7	0	24	9

SWS0948	670403	7350593	0	0	4201	7	180	10.1	30.9	1.66	1.67	2.24	12	0	27	11
SWS0949	670303	7350594	0	0	12631	31	501	48	106.4	9.08	7.08	9.52	20.2	0	259	41
SWS0950	670206	7350594	0	0	12798	30	453	42	101.8	7.81	6.5	8.74	14.5	500	222	38
SWS0951	670103	7350593	0	0	12157	21	282	27.1	71.3	6.37	5.84	7.85	13.9	0	164	28
SWS0952	670004	7350597	0	0	3847	2	47	3.8	7.6	2.76	2.02	2.72	5.5	0	42	7
SWS0953	669907	7350593	0	0	36043	13	129	57	44.4	5.16	10.25	13.78	8.3	0	62	165
SWS0954	669701	7350590	0	0	5279	4	52	5.6	13.3	2.09	2.16	2.9	5.8	0	32	9
SWS0955	669598	7350591	0	0	9116	3	66	6.1	10.1	2.43	3.51	4.72	7	0	39	16
SWS0956	669502	7350594	0	0	5579	0	56	1.2	1.8	0.93	1.81	2.43	11.5	0	12	6
SWS0957	669498	7350694	0	0	3943	3	73	3.2	7.4	1.55	1.62	2.18	4.1	0	23	8
SWS0958	669602	7350691	0	0	4055	5	206	5.3	10.1	2.18	1.76	2.37	6.2	0	35	8
SWS0959	669507	7350791	0	0	15851	7	534	10	29.1	2.99	5.42	7.29	10.4	0	51	20
SWS0960	669602	7350793	0.01	0.09	9320	84	600	7.5	96.5	3.88	5.64	7.58	30.2	2600	110	21
SWS0961	669702	7350793	0.01	0.1	11519	31	165	16	50.3	1.08	2.76	3.71	44.3	3600	38	6
SWS0962	669805	7350793	0.01	0.06	8814	64	57	22	100.7	2.43	3.16	4.25	50.1	1500	34	11
SWS0963	669904	7350790	0.01	0	10735	152	139	53.4	63.5	1.63	2.91	3.91	53.2	0	33	22
SWS0964	670002	7350795	0	0.11	10279	21	523	3.2	73.9	1.73	4.58	6.16	13.8	1600	38	5
SWS0965	670102	7350793	0	0.1	10441	9	283	3.3	116	0.96	3.17	4.26	9.1	0	30	6
SWS0966	670204	7350790	0.02	0.17	10444	38	180	5.6	54.7	1.01	5.45	7.33	20.2	12200	41	6
SWS0967	670303	7350794	0.01	0.15	11546	41	657	46.5	133	7.45	6.33	8.51	20.4	600	209	32
SWS0968	670399	7350794	0	0	13999	27	666	34.1	86.2	10.37	8.32	11.18	18.3	0	293	33
SWS0969	670503	7350792	0	0.15	7589	14	254	10.2	38	2.4	2.84	3.82	16.9	7800	68	10
SWS0970	670606	7350800	0	0.07	6801	15	271	13.6	65.1	3.47	3.31	4.45	22.2	0	59	13
SWS0971	670705	7350792	0	0.07	10872	5	98	6.7	85	0.5	2.1	2.82	10.1	700	19	2
SWS0972	670802	7350797	0	0.08	10627	38	344	9.4	75.6	2.95	3.93	5.28	23.6	500	45	15
SWS0973	670903	7350791	0	0.08	11449	30	320	91.8	178.4	10.64	5.7	7.66	26.2	0	196	84
SWS0974	670905	7350693	0	0.15	9869	44	449	34.8	62.7	2.64	3.2	4.3	22.5	700	61	21
SWS0975	671002	7350791	0	0.07	15391	49	1071	26.9	55.3	2.64	9.18	12.34	41.9	1000	142	11
SWS0976	671002	7350692	0	0.09	9709	42	178	28.7	64.4	2.42	2.88	3.87	20.5	1100	60	25
SWS0977	671099	7350795	0.01	0.09	8181	91	310	41.9	61.7	1.87	2.92	3.93	23.1	1500	39	60
SWS0978	671208	7350790	0.01	0	6993	28	185	30.6	39	1.27	2.31	3.11	12.2	8900	48	21

SWS0979	671301	7350796	0	0	7954	11	123	7.7	22.3	3.01	3.18	4.27	29.6	0	58	13
SWS0980	671405	7350793	0.01	0.11	14098	36	83	9.6	69.8	1.64	11.28	15.16	20.4	15500	115	8
SWS0981	671505	7350788	0.01	0.06	14471	12	162	10.3	56	2.63	4.84	6.51	9.4	600	58	17
SWS0982	671504	7350695	0	0.06	9641	13	89	9	38.2	2.62	4.1	5.51	18.7	0	58	11
SWS0983	671400	7350691	0.01	0	16059	19	74	12.3	31.3	1.29	1.27	1.71	12.9	22700	36	8
SWS0984	671303	7350697	0	0	4656	69	85	18.4	62.3	1.82	1.16	1.56	33.2	1000	33	55
SWS0985	671100	7350688	0.03	0.07	12913	49	156	55.7	52.7	1.45	3.44	4.62	24.9	1500	34	38
SWS0986	670805	7350692	0	0.3	8356	76	599	53.1	233.6	5.28	3.41	4.58	56.2	0	61	17
SWS0987	670702	7350692	0	0.07	5350	27	953	15	124.2	2.34	2.11	2.84	29.8	0	23	14
SWS0988	670600	7350696	0	0	4684	8	99	6.5	18.6	2.01	1.99	2.67	9.6	0	32	9
SWS0989	670506	7350693	0	0	5291	12	203	10.8	72.5	1.64	1.75	2.35	13.8	0	32	5
SWS0990	670600	7350697	0	0	12979	31	431	27.1	71.1	8.51	6.69	8.99	18	1900	239	26
SWS0991	670301	7350696	0	0	13291	30	426	30.9	92.2	8.5	7.4	9.95	18.7	0	241	28
SWS0992	670205	7350692	0.01	0.13	7993	53	205	20.4	115.2	3.26	3.84	5.16	18.3	0	65	10
SWS0993	670094	7350692	0	0	6816	2	57	1.9	7.3	1.34	2.36	3.17	4.7	0	22	6
SWS0994	670001	7350698	0	0	5412	3	241	6.1	9.1	2.52	2.26	3.04	5.2	0	35	7
SWS0995	669503	7350893	0.01	0	18134	35	180	8.9	55.9	2.83	5.75	7.73	17.4	600	61	24
SWS0996	669602	7350892	0.01	0.11	12422	7	49	3.8	122.5	1.22	2.58	3.47	34.5	5800	22	8
SWS0997	669698	7350895	0.01	0.09	8043	46	379	7.8	66.3	2.37	3.47	4.66	23.6	0	47	18
SWS0998	669803	7350893	0.01	0	7057	154	45	33.2	162.4	2.46	2.96	3.98	37.8	35700	54	32
SWS0999	669906	7350893	0	0	10297	23	179	9.9	139.9	1.02	4.57	6.14	7.6	0	26	6
SWS1000	670003	7350896	0.01	0	9319	8	66	3.6	84.2	1.12	4.4	5.91	10.3	1800	28	9
SWS1001	670099	7350895	0.01	0	9559	43	44	4	122.8	1.84	4.28	5.75	15.3	23000	47	4
SWS1002	670206	7350892	0	0	12124	10	858	4.6	20.2	1.8	3.53	4.75	9	600	37	11
SWS1003	670305	7350895	0	0.26	8467	61	593	3.8	93.6	2.16	4.54	6.1	27.4	2600	42	8
SWS1004	670400	7350894	0	0.12	7707	139	282	26.3	165.2	2.92	3.49	4.69	20.9	7100	43	6
SWS1005	670503	7350896	0	0	7892	14	76	8	21.2	4.35	3.9	5.24	14.1	0	88	16
SWS1006	670603	7350893	0	0	7105	4	489	1.8	17.3	0.54	1.76	2.37	9.2	600	14	4
SWS1007	670703	7350893	0	0	12127	12	534	9	11.9	0.97	3.32	4.46	11.7	0	48	10
SWS1008	670802	7350898	0	0	13145	30	234	14.6	56.8	6.23	4.93	6.63	34.2	0	79	44
SWS1009	670902	7350897	0	0	10073	3	47	21.1	72.2	4.78	4.85	6.52	4.2	14600	162	33

SWS1010	671002	7350898	0	0	9264	9	65	7.4	41.2	6.74	3.76	5.05	11.9	0	114	27
SWS1011	671099	7350892	0	0	10397	26	58	32.6	93.3	4.76	4.3	5.78	4.3	25300	71	27
SWS1012	671204	7350895	0.01	0.12	14441	11	1066	9.9	42.1	4.99	5.59	7.51	25.4	0	84	26
SWS1013	672101	7350691	0	0	7080	6	33	4.6	14.9	3.09	3.05	4.1	19.3	0	55	12
SWS1014	672202	7350693	0	0	7721	4	32	4.3	14.9	3.45	3.5	4.7	15.5	0	61	10
SWS1015	672301	7350693	0	0	9182	7	28	5.7	22.3	3.54	3.94	5.3	13	0	65	16
SWS1016	672403	7350693	0	0	10939	11	64	12.9	27.2	5.01	5.43	7.3	17.3	0	98	17
SWS1017	672699	7350590	0	0	7821	4	33	6	14.3	3.4	3.39	4.56	7.5	0	64	11
SWS1018	672803	7350592	0	0	9062	4	312	5.6	15.3	2.49	3.3	4.44	5.2	0	60	11
SWS1019	672901	7350595	0	0	7119	4	26	4.8	14.9	3.09	3.25	4.37	6	0	57	9
SWS1020	673002	7350595	0	0	8381	5	71	8	18.6	3.75	3.95	5.31	9.2	0	70	10
SWS1021	673004	7350490	0	0	8767	15	64	6.2	27.1	4.42	3.92	5.27	29.8	0	73	19
SWS1022	672904	7350492	0	0	7368	9	55	6.8	31.4	4.59	3.39	4.56	12.2	0	69	23
SWS1023	672804	7350493	0	0	10287	5	105	6.7	31.5	2.99	3.92	5.27	7.9	0	64	18
SWS1024	672703	7350492	0	0	6702	3	20	4	11.2	3.26	3.21	4.31	9.6	0	58	8
SWS1025	671498	7350996	0	0	9541	7	64	6.8	13.4	2.51	3.5	4.7	15.7	0	46	12
SWS1026	671399	7350994	0	0.06	14868	44	165	20.1	36.9	8.74	7.83	10.53	45.5	0	180	15
SWS1027	671302	7350992	0	0	14705	19	126	8.6	27.8	6.42	5.62	7.55	20.2	0	93	20
SWS1028	671203	7350994	0	0.05	12955	24	541	8.1	26.9	2.52	3.42	4.6	14.8	500	36	13
SWS1029	671102	7350994	0.01	0.08	10943	10	67	7.6	123.4	3.56	5.61	7.54	4.3	24400	117	14
SWS1030	671004	7350994	0.02	0	10244	5	46	75.6	106.5	3.31	4.08	5.48	0.7	19200	111	52
SWS1031	670902	7350994	0	0	7872	2	61	5.7	135.5	4.46	4.97	6.68	2.1	27200	102	13
SWS1032	670803	7350993	0	0	12304	4	320	81	129.9	5.46	5.15	6.92	10.8	1700	146	42
SWS1033	670704	7350993	0	0	14512	23	640	13.1	30.6	4.33	5.49	7.38	10.4	0	79	26
SWS1034	670605	7350993	0	0	11710	11	376	49.9	74.3	5.14	4.85	6.52	11.8	0	136	34
SWS1035	670502	7350988	0	0.05	8955	12	651	77.5	86.1	4.56	4.01	5.39	32.1	0	109	36
SWS1036	670400	7350988	0	0	10212	42	465	4.6	15.4	1.25	2.52	3.39	113.8	500	42	6
SWS1037	670302	7350996	0	0	16903	13	2000	3.9	17.7	1.41	4.42	5.94	3.9	900	34	9
SWS1038	670202	7350991	0	0.07	9260	35	379	3.6	21.2	4.38	5.84	7.85	15.6	0	98	12
SWS1039	670103	7350990	0.01	0.05	11282	64	347	5.3	70.5	4.13	6.02	8.09	19.9	3500	98	15
SWS1040	670006	7350995	0.01	0.07	11540	64	803	5.9	396	3.57	7.37	9.91	23.9	700	88	12

SWS1041	669902	7350992	0	0.05	14083	34	118	4.9	111	1.83	5.91	7.94	14.2	600	43	14
SWS1042	669804	7350995	0.01	0.08	9197	137	258	6	106.7	2.79	3.97	5.34	71	800	43	23
SWS1043	669701	7350992	0.02	0.16	9440	99	346	11.9	54	2.94	4.04	5.43	43.7	0	56	28
SWS1044	669607	7350994	0	0.07	12590	136	628	3	29	1.74	3.9	5.24	60.9	0	59	9
SWS1045	669603	7351090	0.02	0.1	7302	32	209	3	14.7	1.23	2.31	3.11	14.9	0	30	9
SWS1046	669400	7351091	0.03	0.26	7963	11	312	0.8	6.2	0.79	2.3	3.09	6.9	0	23	6
SWS1047	669801	7351099	0	0	13584	7	230	13.1	25.7	3.61	5.33	7.16	22.9	0	61	24
SWS1048	669903	7351094	0	0	8940	6	355	6.2	16.4	2.11	2.91	3.91	32.6	0	37	22
SWS1049	670002	7351091	0	0	7295	5	198	1.2	4.4	0.71	2.03	2.73	2.4	500	16	6
SWS1050	670105	7351099	0	0	18667	7	1517	11.3	23.6	2.97	5.65	7.59	9.1	0	50	27
SWS1051	670209	7351097	0	0	16070	148	641	16	46.7	7.55	6.32	8.5	36.6	0	104	46
SWS1052	670302	7351098	0.01	0	23303	213	2000	9.9	65.7	10.62	9.17	12.33	39.2	600	184	40
SWS1053	670401	7351092	0	0	20229	41	251	11	39.1	6.69	7.42	9.97	36.5	0	140	23
SWS1054	670504	7351091	0	0	14714	20	688	17.7	53.4	5.65	6.5	8.74	9.8	1000	156	22
SWS1055	670605	7351093	0	0	13702	2	68	30.6	11.4	1.73	3.83	5.15	1.1	12900	78	7
SWS1056	670701	7351094	0.02	0	21183	12	988	16.9	58	7.07	8.69	11.68	8	1000	180	29
SWS1057	670801	7351095	0	0	15587	2	60	55.3	93.1	4.54	7.05	9.48	2.2	22800	164	40
SWS1058	670900	7351089	0	0.06	21618	4	255	17.1	86.7	5.62	9.19	12.35	4.2	0	213	62
SWS1059	671001	7351092	0.01	0	10709	2	13	45.4	113.2	3.24	4.2	5.65	2	21700	95	45
SWS1060	671102	7351092	0	0	15747	41	370	4.3	194.5	3.15	4.72	6.34	14.5	1000	74	17
SWS1061	671200	7351094	0	0	14454	10	70	9.2	21.4	3.71	4.99	6.71	15.5	0	68	18
SWS1062	671318	7351756	0	0	16662	8	2000	16	45.7	8.78	10.76	14.46	17.5	600	216	17
SWS1063	671370	7351753	0	0.08	26804	27	2000	9.3	40.8	13.47	18.7	25.14	34.3	2500	352	13
SWS1064	671420	7351755	0	0.07	16081	15	2000	33.4	36.7	7.85	9	12.1	41.8	0	191	13
SWS1065	671475	7351757	0	0	19699	10	2000	7.1	28.2	5.41	8.12	10.91	23.8	0	133	18
SWS1066	671524	7351757	0.01	0	18329	6	2000	5.1	43.6	5.59	8.88	11.94	27	0	193	15
SWS1067	671521	7351855	0	0	21451	5	2000	28	28	2.37	6.64	8.93	18	0	71	21
SWS1068	671526	7351803	0.01	0	20998	6	2000	9.8	33.4	3.56	7.31	9.83	15	0	105	11
SWS1069	671470	7351803	0	0	20918	8	2000	13.2	24.9	5.79	7.95	10.69	16.9	0	126	18
SWS1070	671420	7351802	0	0	17730	9	2000	11.1	31.9	5.36	7.74	10.4	19.9	0	136	14
SWS1071	671374	7351805	0.01	0	21886	7	2000	8.4	42	5.26	8.44	11.35	14.1	0	143	14

SWS1072	671320	7351801	0	0.1	17118	31	2000	11.1	42.8	16.3	14.3	19.22	21.1	0	507	11
SWS1073	671321	7351855	0	0.05	25327	13	2000	11.4	39.1	10.75	13.57	18.24	16.6	500	328	18
SWS1074	671371	7351855	0.01	0	19555	17	2000	25.1	40.1	10.07	9.97	13.4	9.3	0	303	15
SWS1075	671421	7351855	0.01	0	24483	11	2000	10.8	37.9	7.32	10.15	13.64	21.8	0	169	19
SWS1076	671471	7351855	0	0.09	18305	20	2000	19.5	33.6	9.69	9.85	13.24	30.2	0	218	18
SWS1077	671521	7351859	0	0	19728	12	2000	18.4	35.2	6.74	8.81	11.84	21.7	1000	152	16
SWS1078	671471	7351858	0	0	20984	7	2000	12.9	42.9	5.26	8.66	11.64	27.6	0	152	14
SWS1079	671424	7351852	0	0.05	27925	9	2000	12.9	38.7	6.93	11.03	14.83	21.4	500	171	22
SWS1080	671369	7351857	0	0.06	18396	20	2000	9	40.2	12.33	12.03	16.17	20.9	0	369	15
SWS1081	671321	7351853	0	0.08	24692	24	2000	42.1	77.2	9.66	12.32	16.56	38.4	0	246	41
SWS1082	671322	7351951	0	0.07	22311	25	427	14.3	84.5	13.46	13.5	18.15	40.9	0	388	39
SWS1083	671373	7351953	0	0	23542	8	1013	8.5	46.8	5.1	8.26	11.1	16.6	0	146	15
SWS1084	671423	7351956	0	0	18151	8	1309	40.1	42.9	6.6	9.55	12.84	19.7	0	172	25
SWS1085	671472	7351957	0.01	0	27158	4	172	17.4	43.1	4.17	9.43	12.68	18.3	0	115	27
SWS1086	671521	7351955	0	0	14217	10	227	6.5	24.3	3.06	5.62	7.55	16.4	0	98	9
SWS1087	676375	7350772	0	0	18888	7	119	11.3	52.5	5.41	6.88	9.25	11.4	0	113	29
SWS1088	676352	7350778	0	0	14816	5	94	12.1	49.5	5.86	6.3	8.47	9.3	0	107	28
SWS1089	676325	7350776	0	0	16382	6	53	11.4	45.2	5.44	5.75	7.73	8.3	0	91	27
SWS1090	676325	7350739	0	0	11360	7	116	8.1	43.9	5.45	4.99	6.71	12.6	0	97	24
SWS1091	676351	7350747	0	0	23911	9	136	11	61	5.24	8.71	11.71	8.7	0	113	37
SWS1092	676375	7350750	0	0	14665	8	57	10.5	56.1	5.26	6.05	8.13	10.5	0	103	28
SWS1093	676376	7350726	0	0	20707	9	519	16.4	82.3	6.22	7.86	10.57	21.2	0	106	40
SWS1094	676351	7350726	0	0	24419	26	1137	10.2	145.8	7.2	8.74	11.75	13.1	0	131	49
SWS1095	676325	7350723	0	0	29938	12	1274	9.1	121.8	5.58	10.38	13.95	23.9	0	119	41
SWS1096	676152	7350494	0	0	19014	5	87	15.7	45.4	4.31	6.42	8.63	11	0	98	25
SWS1097	676252	7350493	0	0	18917	5	93	18.9	55.7	4.62	6.69	8.99	9.7	0	111	33
SWS1098	676351	7350495	0	0	23907	5	280	43.4	60.4	4.67	8.1	10.89	10.5	0	109	49
SWS1099	676452	7350492	0	0	13061	11	78	16.7	47.7	4.4	5.59	7.51	30.7	0	90	34
SWS1100	676554	7350490	0	0	16016	8	69	8.5	32.4	4.45	5.82	7.82	23.5	0	86	28
SWS1101	676654	7350495	0	0	15546	8	59	13.2	40.5	5.09	6.46	8.68	14.3	0	96	36
SWS1102	676754	7350493	0	0	14870	4	61	8.9	27.6	4.37	5.49	7.38	9.5	0	94	24

SWS1103	676752	7350395	0	0	13627	5	65	7.2	20.7	3.76	5.12	6.88	12.7	0	74	21
SWS1104	676654	7350392	0	0	19195	10	304	21.1	26.3	3.76	6.45	8.67	15.1	0	70	21
SWS1105	676553	7350394	0	0	17737	9	230	14.4	33.5	4.56	6.43	8.64	31	0	84	30
SWS1106	676455	7350392	0	0.07	16387	13	99	4.7	39.3	4.96	6.06	8.15	51.3	0	96	34
SWS1107	676351	7350396	0	0	13995	10	86	10.3	57.6	4.4	5.54	7.45	97	0	94	31
SWS1108	676255	7350393	0	0	24051	6	270	34.6	102.7	5.92	7.65	10.28	23.9	0	138	36
SWS1109	676152	7350392	0	0	13453	5	76	11.3	29.5	3.62	4.77	6.41	12.7	0	79	18
SWS1110	676152	7350294	0	0	21696	4	81	17.6	30.7	3.8	6.84	9.19	11.5	0	76	22
SWS1111	676250	7350293	0	0	20214	5	81	16.7	34.4	4.24	6.71	9.02	15	0	85	28
SWS1112	676353	7350291	0	0	17199	6	121	17.4	41.9	4.95	6.45	8.67	21.1	0	95	34
SWS1113	676454	7350290	0	0	20689	6	388	14.8	25.9	3.58	6.6	8.87	17.4	0	71	23
SWS1114	676551	7350293	0	0	18473	9	154	24.8	27.8	4.92	6.78	9.11	23	0	102	26
SWS1115	676650	7350292	0	0	19278	7	103	13.5	26.5	5	6.96	9.36	16.3	0	100	27
SWS1116	676753	7350293	0	0	17667	7	63	6	21.4	4.5	6.44	8.66	12.2	0	87	23