

Resignation of CEO

Heavy Minerals Limited (ACN 647 831 833) (“**Heavy Minerals**” or the “**Company**”) would like to announce the resignation of the Chief Executive Officer, Andrew Taplin.

Andrew will remain with the Company for his 3-month notice period and will lead the completion of the Company’s highly anticipated Pre-Feasibility Study (PFS).

Andrew will have been with the Company for nearly 2 years at completion of the PFS and has delivered exceptional work and brought a can-do attitude to the Company.

Andrew will take up a new opportunity developing an Iron Ore Project in West Central Africa, and the Company wishes Andrew every success with his future endeavours.

Adam Schofield will become an Executive Director in the Company and will retain his Chairman’s role. Remuneration for the Executive role will be \$200K per annum inclusive of superannuation with the Chairman’s fees of \$57K per annum, remaining the same. Either party may terminate the Executive Agreement by providing six months’ written notice.

This announcement has been authorised by the Board of Directors of the Company.

Ends

For further information, please contact:

Heavy Minerals Limited

Adam Schofield
Executive Director & Chairman
Ph: +61 (08) 9481 0389
E: info@heavyminerals.com

Media & Investor Enquiries

Peter Taylor, NWR Communications Ph: +61 (0) 412 036 231
E: Peter@nwrcommunications.com.au



About Heavy Minerals Limited

Heavy Minerals Limited (ASX: HVY) is an Australian listed industrial mineral exploration company.

The Company's projects are prospective for industrial minerals including but not limited to Garnet, Zircon, Rutile and Ilmenite. The Company's initial focus is the Port Gregory and Red Hill Garnet Projects in Western Australia with the Port Gregory project having a JORC (2012) Measured, Indicated and Inferred Mineral Resource of 166 million tonnes @ 4.0% Total Heavy Minerals. This comprises a Measured Mineral Resource of 126 Mt @ 3.8% THM; an Indicated Mineral Resource of 20 Mt @ 6.5% THM; and an Inferred Mineral Resource of 20 Mt @ 2.9% THM. This includes 5.9 million tonnes of contained Garnet and 260 thousand tonnes of ilmenite¹.

An Exploration Target has been defined for Red Hill using cut-off grades for reporting of 3% THM and 1% THM and ranging from 90 to 150 Mt of material @ 5.4% to 4.1% THM. The Exploration Target also contains between 5 and 6 Mt of THM and 3.8 and 4.5 Mt of garnet². The potential quality and grade of the Exploration Target is conceptual in nature and there has been insufficient exploration activity to determine a Mineral Resource estimate and it is uncertain if further exploration will result in the estimation of a Mineral Resource.

The Company's other project is the Inhambane Heavy Mineral Project in Mozambique which contains an ilmenite dominated JORC (2012) Inferred Mineral Resource of 90 million tonnes @ 3.0% Total Heavy Mineral³.

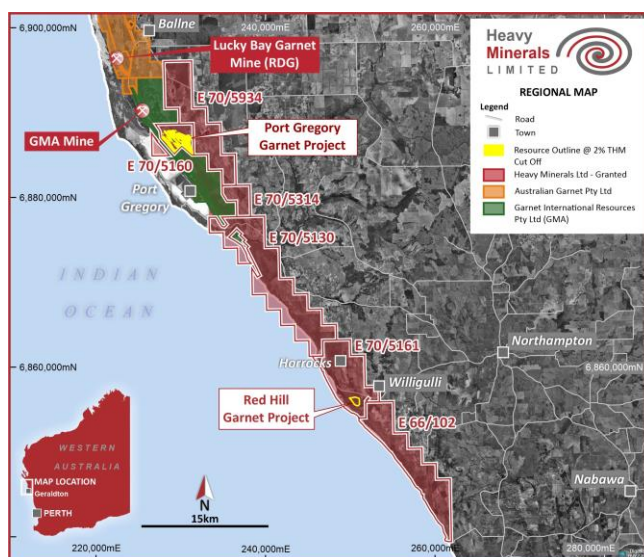
The Company confirms that it is not aware of any new information or data that materially affects the information included in this announcement and that all material assumptions and technical parameters underpinning the JORC estimates continue to apply and have not materially changed.

To learn more please visit: www.heavyminerals.com

¹ https://cdn-api.markitdigital.com/apiman-gateway/ASX/asx-research/1.0/file/2924-02685080-6A1157738?access_token=83ff96335c2d45a094df02a206a39ff4

² https://cdn-api.markitdigital.com/apiman-gateway/ASX/asx-research/1.0/file/2924-02661758-6A1148442?access_token=83ff96335c2d45a094df02a206a39ff4

³ https://cdn-api.markitdigital.com/apiman-gateway/ASX/asx-research/1.0/file/2924-02462745-6A1067130?access_token=83ff96335c2d45a094df02a206a39ff4



Project Locations - Port Gregory and Red Hill