



**EXPLORATION FOCUSED**



# **Barkly Copper-Gold Super Project**

**AGM Presentation November 2024**



# Key Investment Highlights



## **Barkly Super Project** **Single district, high value,** **exploration focus**

- Iron Oxide Copper Gold (IOCG)  
e.g. Warrego and Juno (NT), Ernest Henry (QLD), Olympic Dam (SA)
- Sediment Hosted  $\pm$ Cu-Ag-Pb-Zn  
e.g. McArthur River – HYC (NT), Mt Isa, Lady Loretta (QLD)



## **Commanding land position in NT –** **an underexplored province**

- East Tennant – potential for giant copper-gold and copper-silver-lead-zinc deposits
- Tennant Creek – home to some of Australia's highest grade gold-copper mines



## **Pathway to success from large** **portfolio of greenfield targets**

- Methodical approach to target generation provides best chance of discovery
- Exciting pipeline of drill targets



## **Early stage, undervalued exploration** **investment opportunity**

- Land position and potential upside of the identified portfolio of targets not recognised in MDI market value
- Positioning for growth through multi-commodity exploration and target generation – Porphyry Copper Gold and Epithermal Gold(QLD)



## **Drilling Activity Planned &** **Government Co-funded**

- Active exploration programs underway
- Government co-funded drilling at Barkly



## **Highly experienced and passionate** **Board and Management**

- Proven track record of driving successful exploration, discovery and mine development
- IOCG and covered terrane exploration expertise



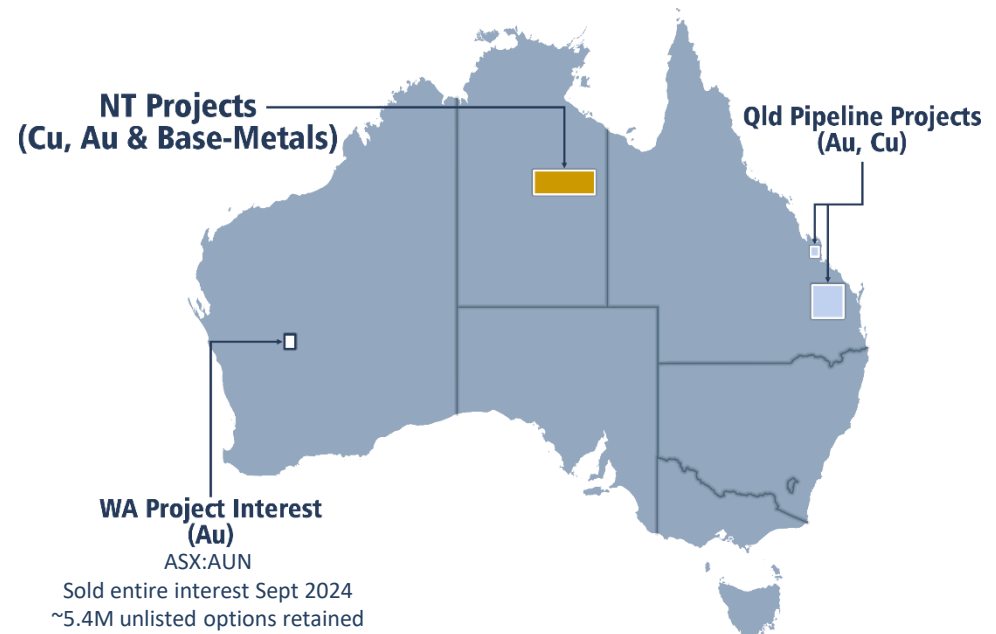
## Corporate Structure

Shares on Issue	273.1M
Share Price (as at 30 September 2024)	\$0.016
Market Cap (as at 30 September 2024)	\$4.37M
Cash (as at 30 September 2024)	\$1.99M
Investments	
Shares in ASX: EMU & TSX-V: Tajiri (based on closing prices 30 September 2024)	\$280k
Debt	NIL

## Major Shareholders

Directors	~4%
Top 20 Shareholders	~61%

## Portfolio Overview





## Experienced, well-rounded Board and Management team



**Peter Thomas LLB, B.Juris ,  
Non-Executive Chairman**

Practicing solicitor from 1980 until June 2011, specialising in the provision of corporate and commercial advice to explorers and miners. Significant board experience since 1980s including founding chairman of Sandfire Resources NL, non-executive founding chairman Emu Nickel NL and NED Image Resources, of which he was the founding chairman.



**Roland Bartsch MSc. BSc. (Hons),  
Chief Executive Officer**

Geoscientist mining executive with 30+ years experience in mining, project development, resource evaluation and mineral exploration. Global experience includes major mining companies, international consulting groups, and junior miners working on copper-gold, base metal, gold and iron ore projects.



**Brad Marwood,  
Non-Executive Director**

Highly experienced mining engineer and resources industry executive with 30+ years experience. Career highlights include bringing the Kipoi (DRC) copper mine into production; completing development of Svartliden gold mine (Sweden). Previous senior roles held at Normandy, Dragon Mining, Lafayette, Moto Goldmines, Perseus Mining and Tiger Resources and is the Chairman of ASX-listed Yari Minerals.



**Rudolf Tieleman,  
CFO & Company Secretary**

Rudolf Tieleman is an accountant with over 25 years' experience in public practice. He has extensive knowledge in matters relating to the operation and administration of listed mineral exploration companies in Australia.



**Bruce Stewart,  
Non-Executive Director**

Involved in global capital markets 30+ years with an emphasis on mining and hard assets. Previous experience includes co-heading Jeffries & Co global hard asset desk in New York, directorships on London listed mining companies, company reorganisation and sale, and various consultancy assignments for funds, investment banks and public and private companies.

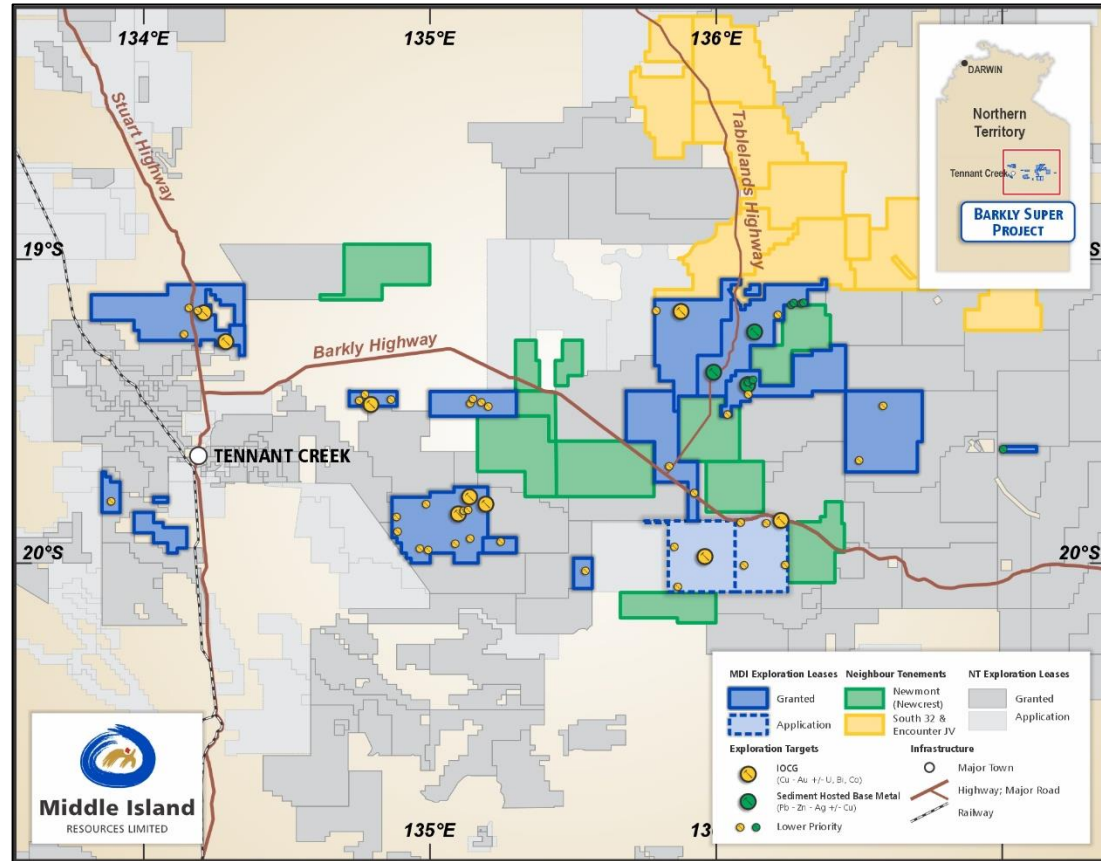


# Barkly Copper-Gold Super-Project



## Multi Target Super Project

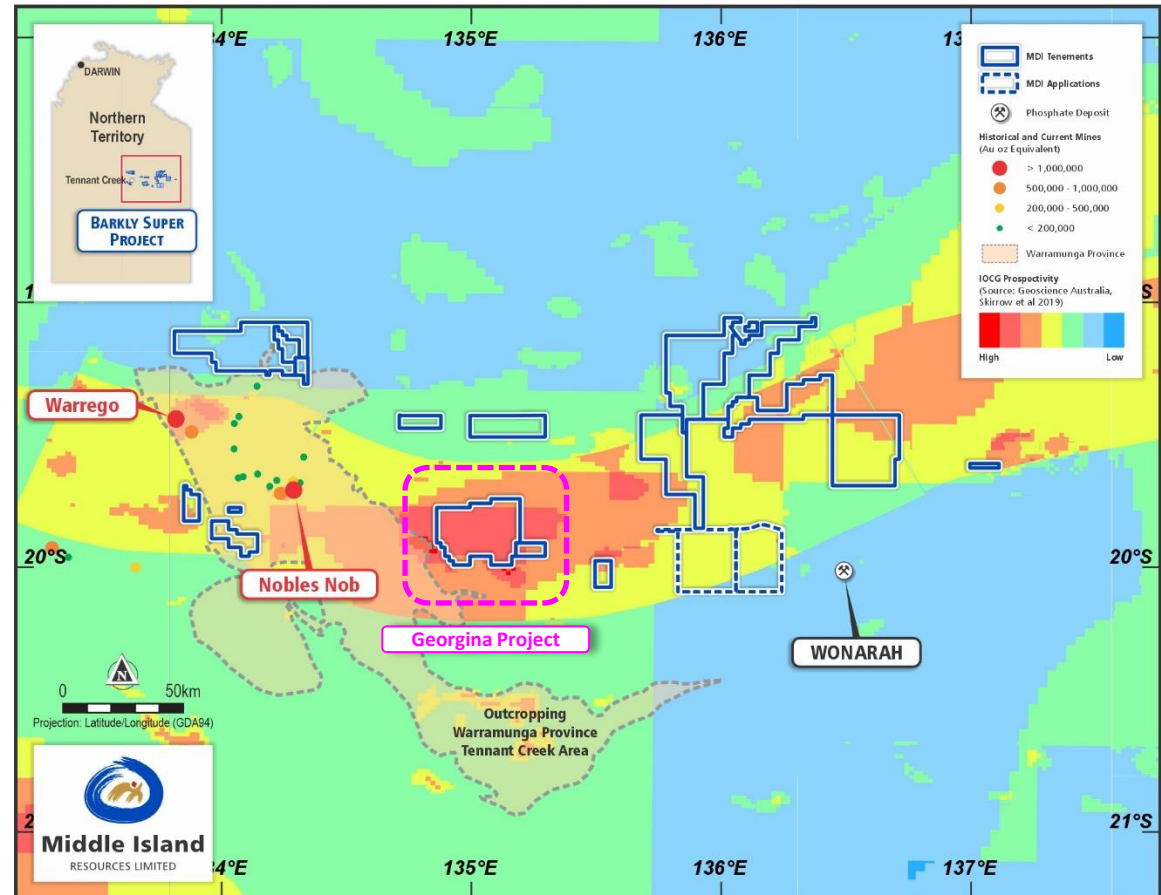
- Built a strategic position
- Permits & applications now 6,918km<sup>2</sup>
- Targeting **Iron Oxide Copper Gold (IOCG)** and **Sediment Hosted Copper-Silver-Lead-Zinc**
- **50+ targets – 12 high priority**
- Permits adjoin **Newmont, South 32 JV** with Encounter Resources and Inca Minerals
- Multiple Projects within the Super-Project - current focus is Georgina and Barkly Project



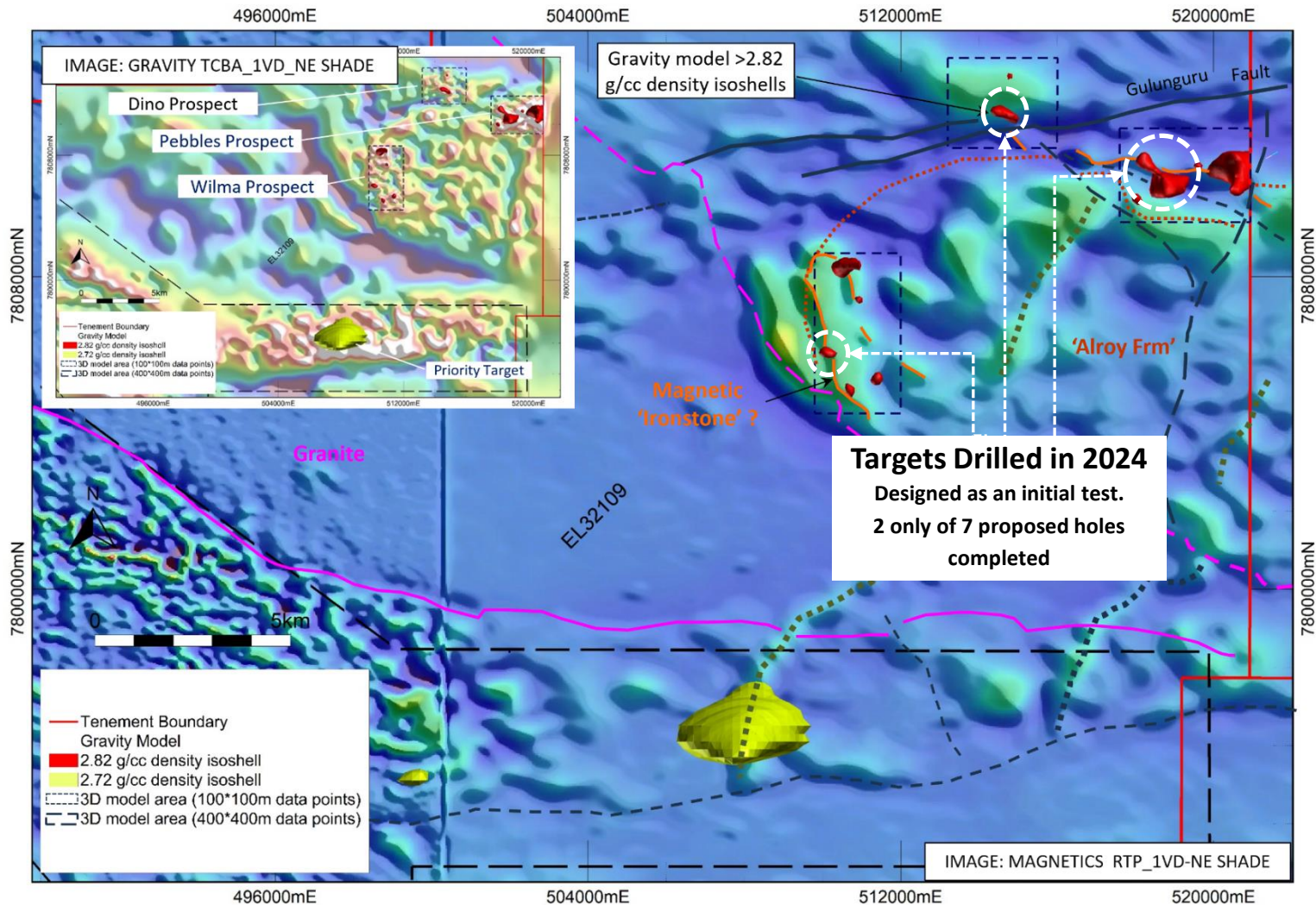


## Exploration tenure covers key target areas

- East Tennant Ridge - identified by Geoscience Australia as a highly prospective belt for IOCG deposits masked by younger cover rock sequences.
- Georgina Project exploration licence extensively covers the more prospective East Tennant area.
- Awarded \$300,000 in aggregate in 2024 under two co-funding grants under Round 17 of the NT Government's GDC program.
- Drilling at the Georgina Project was completed in 2024 under the first grant (\$125K).



## Multiple modelled well-defined density anomalies ('shoots') consistent with IOCG deposits





# Georgina Project – Exploration at Work



## Maiden drilling of targets commenced mid-July 2024

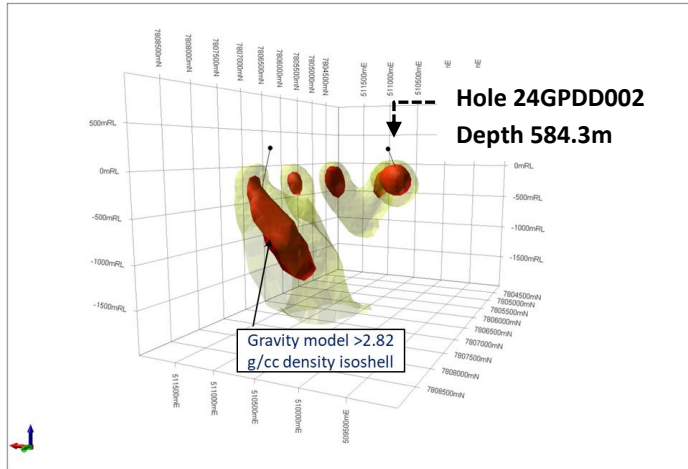
- Full NT GDC Georgina grant funding being received.



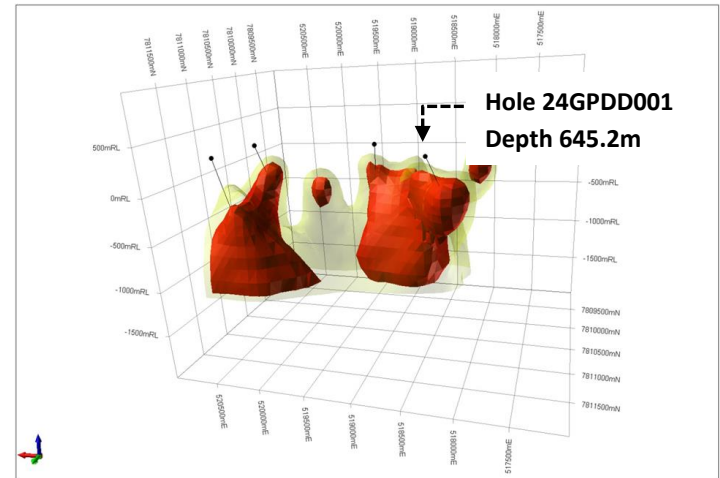




## Multiple drill targets identified by detailed gravity 3-D density inversion models

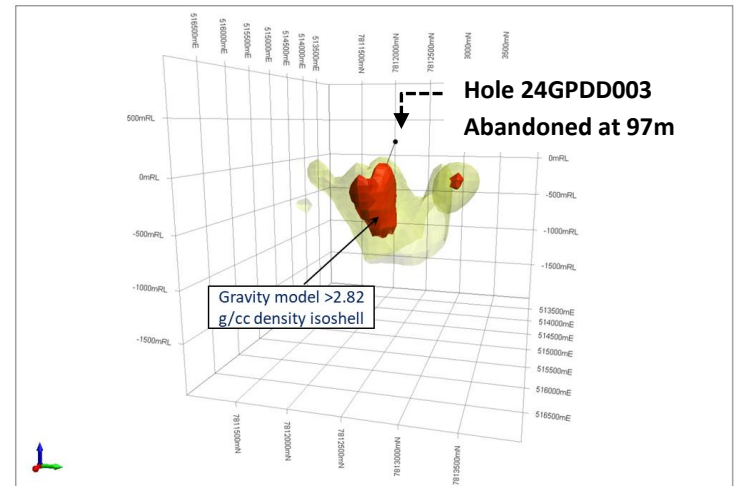


**Wilma Prospect (EL32109)**



**Pebbles Prospect (EL32109)**

- 2 reconnaissance diamond holes completed to target depth.
- An initial test only - particularly considering the large footprint of the Pebbles target.



**Dino Prospect (EL32109)**

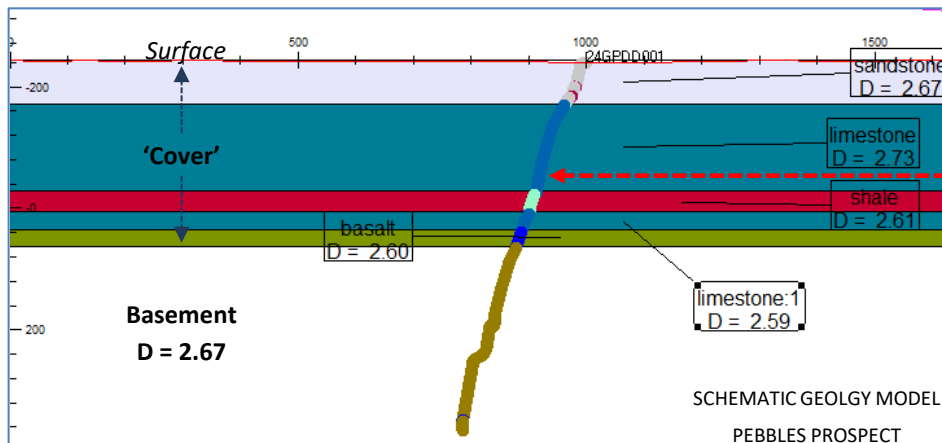
# Georgina Project – Drilling results



## New exploration possibilities opened up

- Trace iron, lead ± zinc sulphides were recorded in narrow intervals of fractured and brecciated carbonates in the overlying cover sequence – possible MVT style mineralisation.

### Cover Rocks

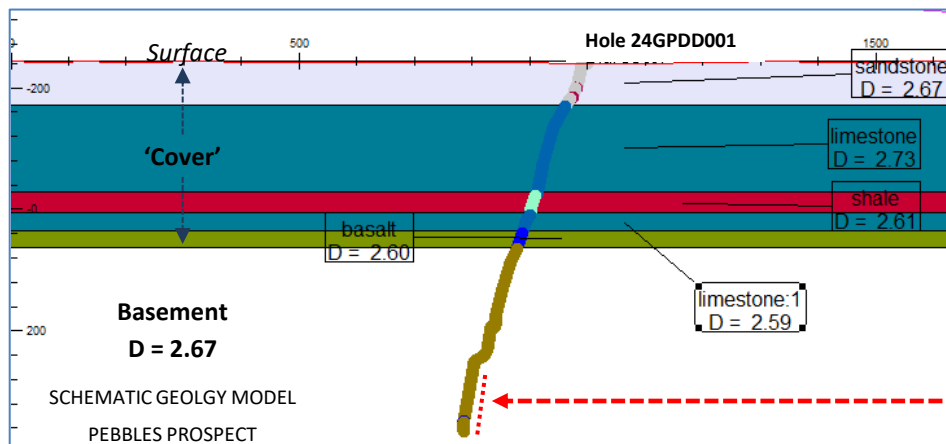
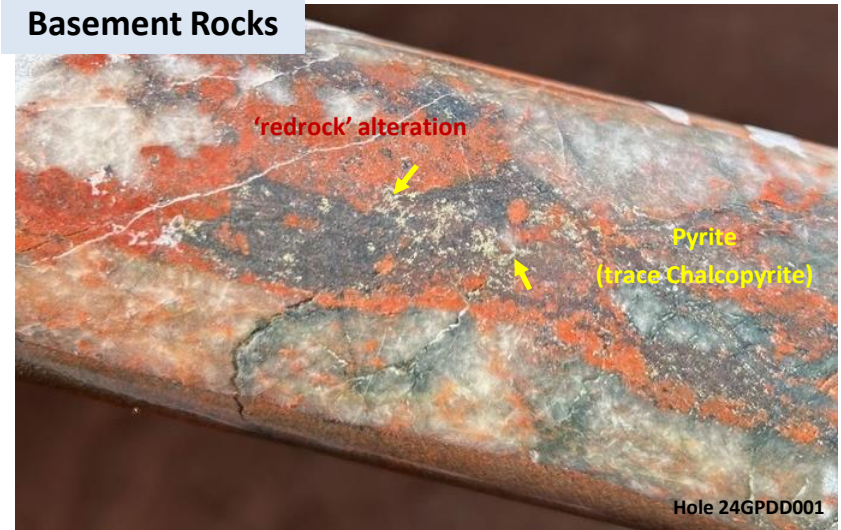




## Significant alteration at Pebbles

- Extensive 'redrock' alteration with dispersed trace sulphides is consistent with the IOCG target concept and approaching target – despite no significant copper.
- Targeted gravity anomalies are not explained by rocks intercepted. Alteration in the hole may indicate mineralisation (higher density rocks) off-hole.

Basement Rocks



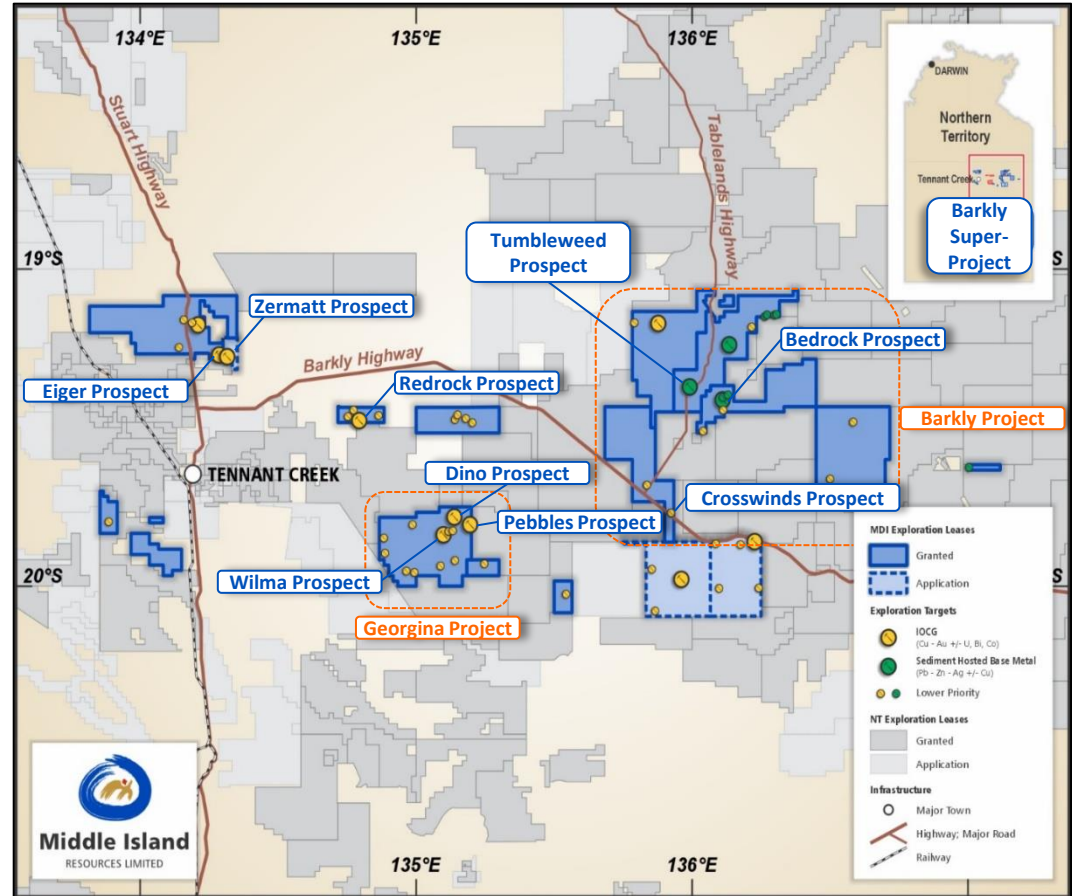


# Multiple Drill-Ready Targets



## Systematic Exploration

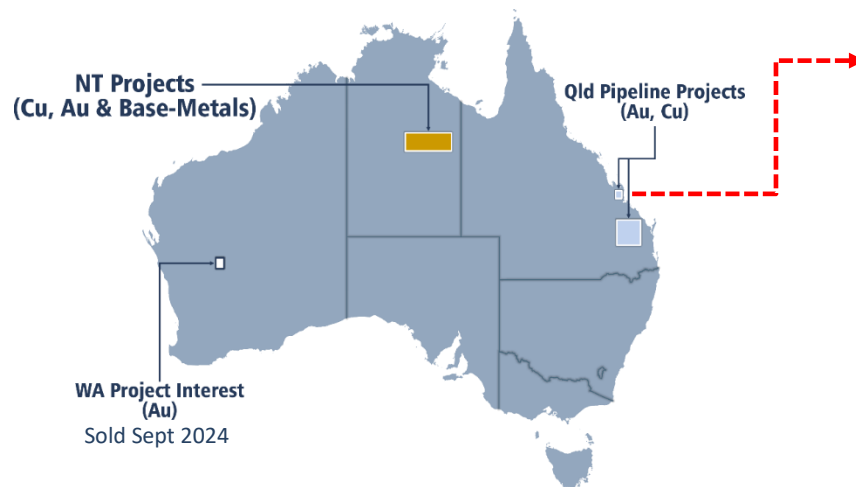
- Early-stage – to date 6 drill holes completed at 4 prospects
- 50+ targets – 12 high priority**
- Numerous advanced prospects drill-ready
- Ongoing programs underway to advance next round of prospects
- Alteration styles observed in drillholes consistent with target concepts
- Exploration success – achieved by systematic testing, & build of knowledge**





## New complimentary project opportunities to generate shareholder value

- Multiple acquisition opportunities assessed; with a new expanded focus on mature gold and copper assets in Australia ongoing.
- Five grassroots projects generated in Qld targeting porphyry copper-gold and epithermal-gold style deposits; 2 recently granted (Ridgeland & Greenbank).



- Historical Ridgeland Goldfield (discovered 1886)
- Located 35km NW of Rockhampton
- Forgotten by the Mining Industry; only modern and most recent work was by Saracen Minerals (1986-1989)
- Past exploration showed gold at surface within a magnetic intrusive plug, limited testing by RC holes 6-25m deep.
- No modern geophysics surveys



**For more information:**

**Roland Bartsch**

Chief Executive Officer

E: [roland@middleisland.com.au](mailto:roland@middleisland.com.au)

Unit 1, 2 Richardson Street West Perth

Western Australia, 6005

Tel +61 (08) 9322 1430

[www.middleisland.com.au](http://www.middleisland.com.au)







# Important Notice and Disclaimer

## Disclaimer Notice

The material in this presentation (“material”) is not and does not constitute an offer, invitation or recommendation to subscribe for, or purchase any security in Middle Island Resources Limited (“MDI”) nor does it form the basis of any contract or commitment. MDI makes no representation or warranty, express or implied, as to the accuracy, reliability or completeness of this material. MDI, its directors, employees, agents and consultants shall have no liability, including liability to any person by reason of negligence or negligent misstatement, for any statements, opinions, information or matters, express or implied, arising out of, contained in or derived from, or for any omissions from this material except liability under statute that cannot be excluded.

## Forward Looking Statements

Statements contained in this material, particularly those regarding possible or assumed future performance, timeframes, costs, dividends, production levels or rates, prices, resources, reserves or potential growth of MDI, industry growth or other trend projections are, or may be, forward looking statements. Such statements relate to future events and expectations and, as such, involve known and unknown risks and uncertainties. Actual results and developments may differ materially from those expressed or implied by these forward looking statements depending on a variety of factors.

## Previously Reported Information

The Company confirms that it is not aware of any new information or data that materially affects the information included in the original market announcements and, in the case of reporting of Mineral Resources that all material assumptions and technical parameters underpinning the estimates in the relevant market announcements continue to apply and have not materially changed. The Company confirms that the form and context in which any Competent Person’s findings are presented have not been materially modified from the original market announcements. As new information is obtained the market will be made aware of any changes to the Mineral Resources through the delivery of an original market announcement incorporating the new information.