

12 June 2025

EGM – CEO Presentation

Petratherm Limited (ASX: PTR) (**PTR** or the **Company**) is pleased to release the following Company Presentation to be delivered by Chief Executive Officer Peter Reid at the Company's Extraordinary General Meeting on 12 June 2025.

ENDS

This announcement has been authorised for release on the ASX by the Company's Board of Directors.

For further information:

Peter Reid

Chief Executive Officer

preid@petratherm.com.au

0435 181 705

Media and Broker Contact

Jason Mack

White Noise Communications

jason@whitenoisecomms.com

0400 643 799

The Muckanippie Project - *Unravelling Critical Mineral Potential*



Company EGM Presentation - 12 June 2025

ASX:PTR



Compliance Statements



DISCLAIMER:

This presentation has been prepared by Petratherm Limited (Petratherm). The information contained in this presentation is a professional opinion only and is given in good faith. Certain information in this document has been derived from third parties and though Petratherm has no reason to believe that it is not accurate, reliable or complete, it may not have been independently audited or verified by Petratherm.

Any forward-looking statements included in this document involve subjective judgment and analysis and are subject to uncertainties, risks and contingencies, many of which are outside the control of, and maybe unknown to, Petratherm. In particular, they speak only as of the date of this document, they assume the success of Petratherm's strategies and they are subject to significant regulatory, business, competitive and economic uncertainties and risks. Actual future events may vary materially from the forward looking statements and the assumptions on which the forward looking statements are based. Recipients of this document ("Recipients") are cautioned not to place undue reliance on such forward-looking statements.

Petratherm makes no representation or warranty as to the accuracy, reliability or completeness of information in this document and does not take responsibility for updating any information or correcting any error or omission which may become apparent after this document has been issued. To the extent permitted by law, Petratherm and its officers, employees, related bodies corporate and agents ("Agents") disclaim all liability, direct, indirect or consequential (and whether or not arising out of the negligence, default or lack of care of Petratherm and/or any of its Agents) for any loss or damage suffered by a Recipient or other persons arising out of, or in connection with, any use or reliance on this presentation or information. All amounts are in Australian dollars (AUD) unless stated otherwise.

COMPETENT PERSONS STATEMENT:

The information in this report that relates to Exploration Targets and Exploration Results is based on information compiled by Mr Peter Reid, who is a Competent Person, and a Member of the Australian Institute of Geoscientists. Mr Reid is not aware of any new information or data that materially affects the historical exploration results included in this report. Mr Reid is an employee of Petratherm Ltd. Mr Reid has sufficient experience that is relevant to the style of mineralization and type of deposit under consideration and to the activity being undertaken to qualify as a Competent Person as defined in the 2012 Edition of the 'Australasian Code for Reporting of Exploration Results, Mineral Resources and Ore Reserves'. Mr Reid consents to the inclusion in the report of the matters based on his information in the form and context in which it appears.

JORC INFORMATION AND COMPLIANCE NOTE:

Further details (Including JORC 2012 Code Reporting Tables, where applicable) for the information included in this Presentation can be found in the following Petratherm Limited announcements previously lodged with the ASX:

Footnotes

1. The purpose of the figure is to illustrate the geographical proximity **only** of the Project Area to other mineral occurrences and geographical locations.
2. Muckanippie Tenement Granted – 14 November 2022
3. Farm-in Agreement Expands Muckanippie Project – 18 April 2024
4. High-Grade Titanium Rich Heavy Mineral Sands at Muckanippie – 11 September 2024
5. Outstanding Metallurgical Results at Muckanippie HMS Project – 19 November 2024
6. Drill Results Confirm Major HMS Discovery at Rosewood – 04 December 2024
7. Pure High-Value Titanium Mineral Assemblage at Rosewood – 20 January 2025
8. Drilling Confirms Potential for World-Class Titanium Project – 06 February 2025
9. New Style of Titanium Mineralisation at Muckanippie – 19 February 2025
10. Positive Rosewood Heavy Mineral Size Analysis – 5 March 2025
11. Muckanippie Project Update – 17 April 2025
12. Drilling at Rosewood Returns Best Results to Date – 29 May 2025

Why Petratherm?



- High grade, district scale titanium HMS discovery
- Initial mineralogy results average >96% VHM content
- Assemblage dominantly comprises high value titanium ores (rutile product and pseudo-rutile)
- Deposit is close to surface and remains open to the north
 - Additional saprolite HM zones under investigation
- Coarse grained therefore likely to generate strong recoveries through conventional spiral technologies
- Tier-1 mining jurisdiction of South Australia
- Close to existing transport infrastructure provides access to global markets
- Robust balance sheet to support ongoing studies and exploration with \$9.3m cash at 31 March 2025
- Management with a proven track record of discovery



Corporate Overview

Shares on Issue

346M

Share Price (10/06/2025)

\$0.29

Cash (31/03/2025)

\$9.3M

Options

1.55M

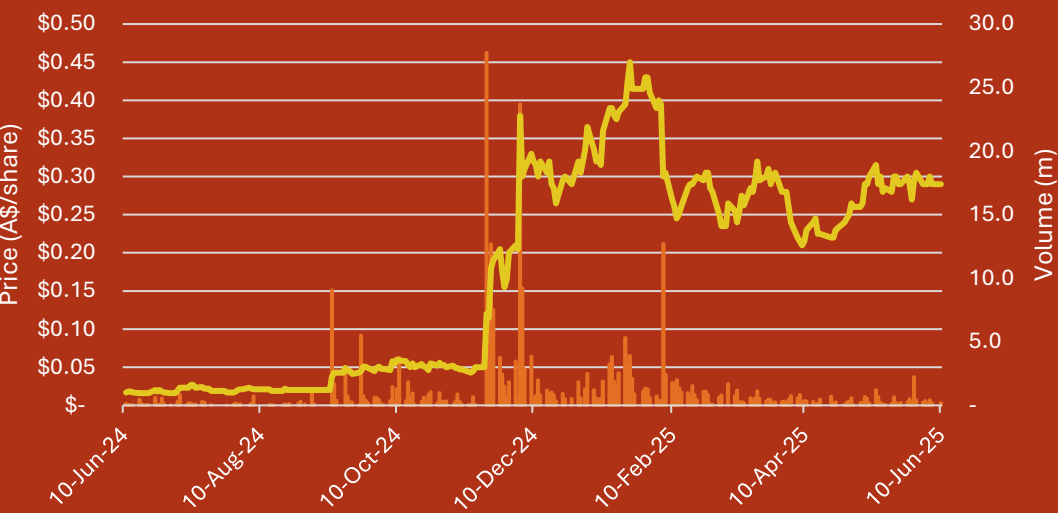
Market Cap (undiluted)

\$100.3M

Enterprise Value

\$91.0M

PTR Share Price and Volume Chart



Board and Management



Derek Carter Non-Executive Chairman

Derek Carter is a founder of the Minotaur group and a joint recipient of Explorer of the Year (AMEC) for the discovery of the Prominent Hill Copper Gold deposit. He was Chairman of Highfield Resources during the discovery and evaluation of the world-class Muga deposit and has been involved with numerous Government, Industry and ASX listed Company Boards. He is current Chairman of Hillgrove Resources. He is a geologist with over 45 years Corporate and field experience.



Peter Reid Chief Executive Officer

Peter Reid is an exploration geologist with 30 years' experience. Part of the Minotaur team which discovered the Prominent Hill copper-gold deposit and then later heavily involved in the successful IPO spin offs of ASX listed, Mithril Resources Ltd and Petrathern Ltd. Founding CEO of Petrathern and the recipient of the Chairman's Award for his contribution to the Australian geothermal industry.



Rob Sennitt Executive Director

Rob Sennitt has over 35 years experience in the natural resources sector. During this time, he has operated as a senior investment banker, private equity investor and portfolio manager as well as providing corporate leadership in various managing director roles. Rob was previously Managing Director of Mineral Deposits Limited which owned 50% of the TiZir Joint Venture which operated the GCO Mineral Sands mine in Senegal and the TTI titanium slag smelter in Norway.



Simon Taylor Non-Executive Director

Simon Taylor is a resources industry executive with over 30 years' experience in geology, finance and corporate management at CEO and Board levels. Most recently, Simon was Managing Director of Oklo Resources Limited when it was acquired by B2Gold Corp in September 2022. He is the Managing Director of Stellar Resources and a Non-Executive of Director Black Canyon Resources.



Simon O'Loughlin Non-Executive Director

Founder of O'Loughlins Lawyers, an Adelaide based specialist commercial law firm. Extensive Experience of equity capital markets, ASX and ASIC rules. Has held many Non-Exec Directorships on ASX listed companies. Non-Exec Director of Stellar Resources.



Donald Stephens Non-Executive Director

Chartered Accountant and corporate advisor with over 25 years' experience in the accounting, mining and services industries, including 14 years as partner of HLB Mann Judd (SA), a firm of Chartered Accountants.

Exploring for World-Class Critical Mineral & Copper-Gold Deposits in South Australia

Muckanippie Critical Minerals Project

- High-grade titanium rich heavy mineral sands discovered over a 15km² area at Rosewood and remains open to the north.
- Exceptional Valuable Heavy Mineral Content, rich in rutile products and High Ti minerals.
- *Phase 2 step out exploration drilling results imminent*

Woomera Copper-Gold Project

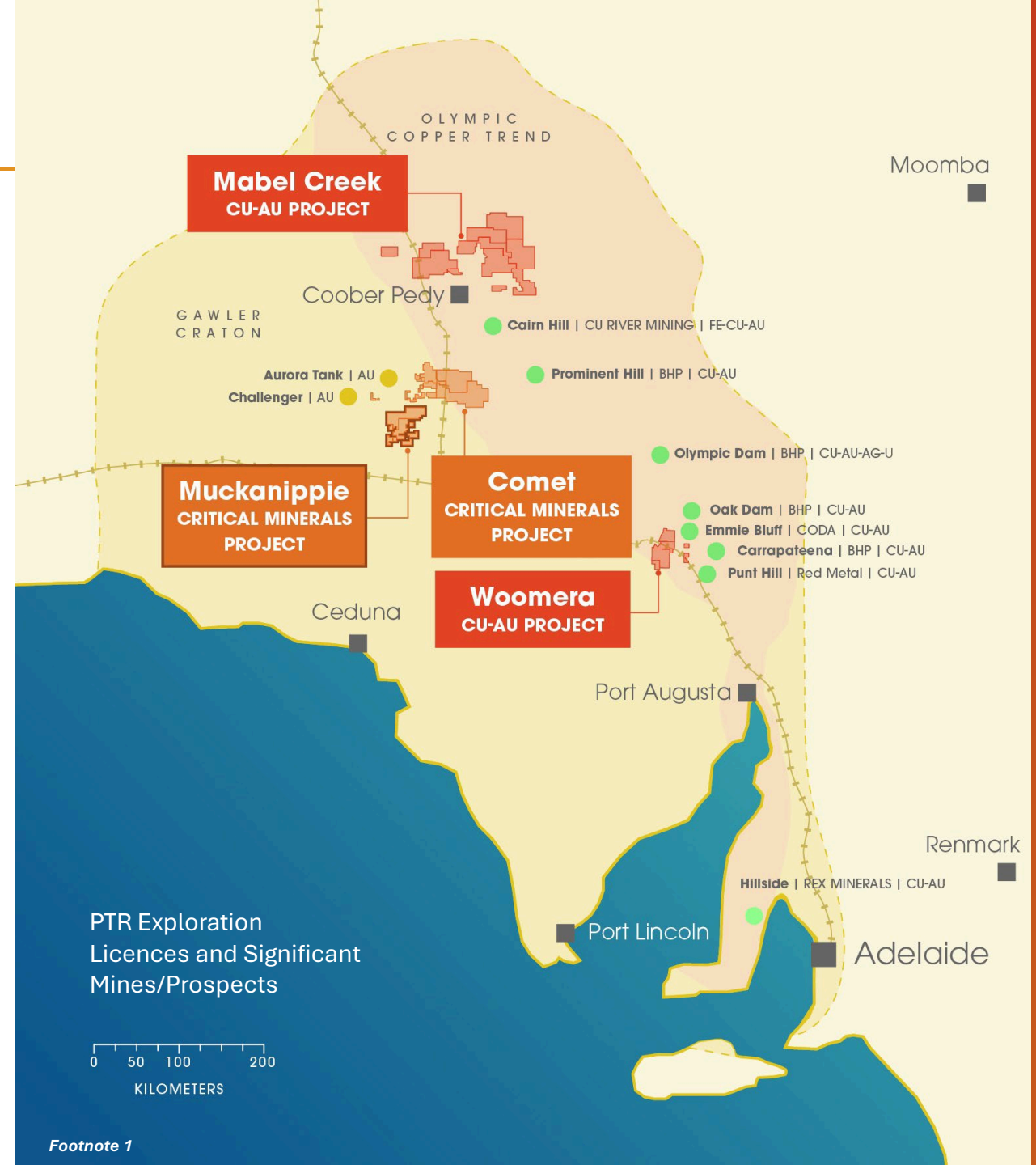
- Located in World-Class Copper-Gold Olympic Province
- High calibre Tier-1 sized drill ready targets

Mabel Creek Copper-Gold Project

- Large holding over the northern Olympic Copper-Gold Province.
- Drilling has defined two Copper-Gold alteration systems
- Several drill ready Tier-1 sized targets

Comet Critical Minerals Project

- Exceptional clay hosted Rare Earth drill intercepts – 3 major Prospects
- Large layered intrusions – Au-PGE anomalies



Muckanippie Market Access Infrastructure



Proximal to Rail Access for International Markets

Less than 40km from rail head provides rail connection to;

- Whyalla
- Port Adelaide
- Darwin (Export to Asia)
- Fremantle



South Australian Rail Access

Provides rail connection to;

- **Whyalla**
 - Value-add processing options
E.g. mineral separation, synthetic rutile, pigment or titanium sponge processing opportunities
 - Resident expertise in pyro-metallurgy
 - Potential export port
- **Port Adelaide**
 - Potential export port / Flinders Container Terminal

Titanium is a listed Critical Mineral for major economies including Australia, USA, EU, Japan, India and South Korea

Muckanippie Project: Bushveld Type Layered Intrusion

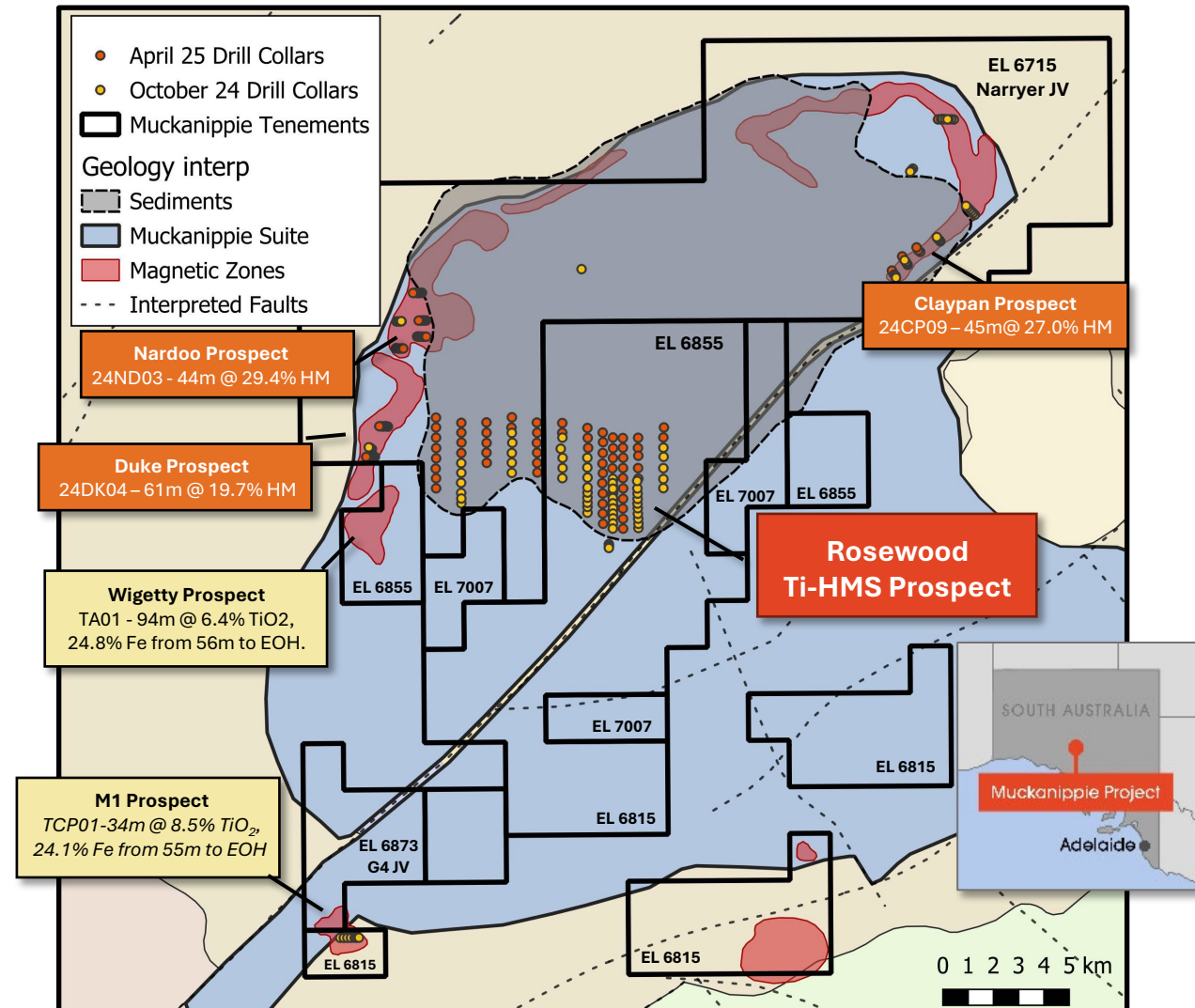


645 km² – covering the majority ground position over the Muckanippie Suite

Similar geology and metal associations to the globally significant **Bushveld Complex**, South Africa. Largely un-explored due to shallow cover. U-Pb Geochron - 1871 Ma \pm 4Ma

3 Types of Titanium Mineralisation Present

- *Regionally extensive Ti-V mineralisation in basement*
- *Heavy Mineral (HM) – ilmenite rich saprolite clays – potential for conventional HMS style development*
- *Overlying high-grade- High-Ti, Heavy Mineral Sands Mineralisation*



Geology Map of Muckanippie Area, Tenements and Prospects

Rosewood Prospect – Titanium Rich Heavy Mineral Sands



LEFT - High-grade Heavy Mineral Sand Interval - (drill hole 24RW049, 8-9m). Sands become distinctively dark grey due to high heavy mineral content.
RIGHT – Panning of same interval highlights Heavy Minerals. HMC = 31.2%.

Rosewood Prospect – Summary of Results

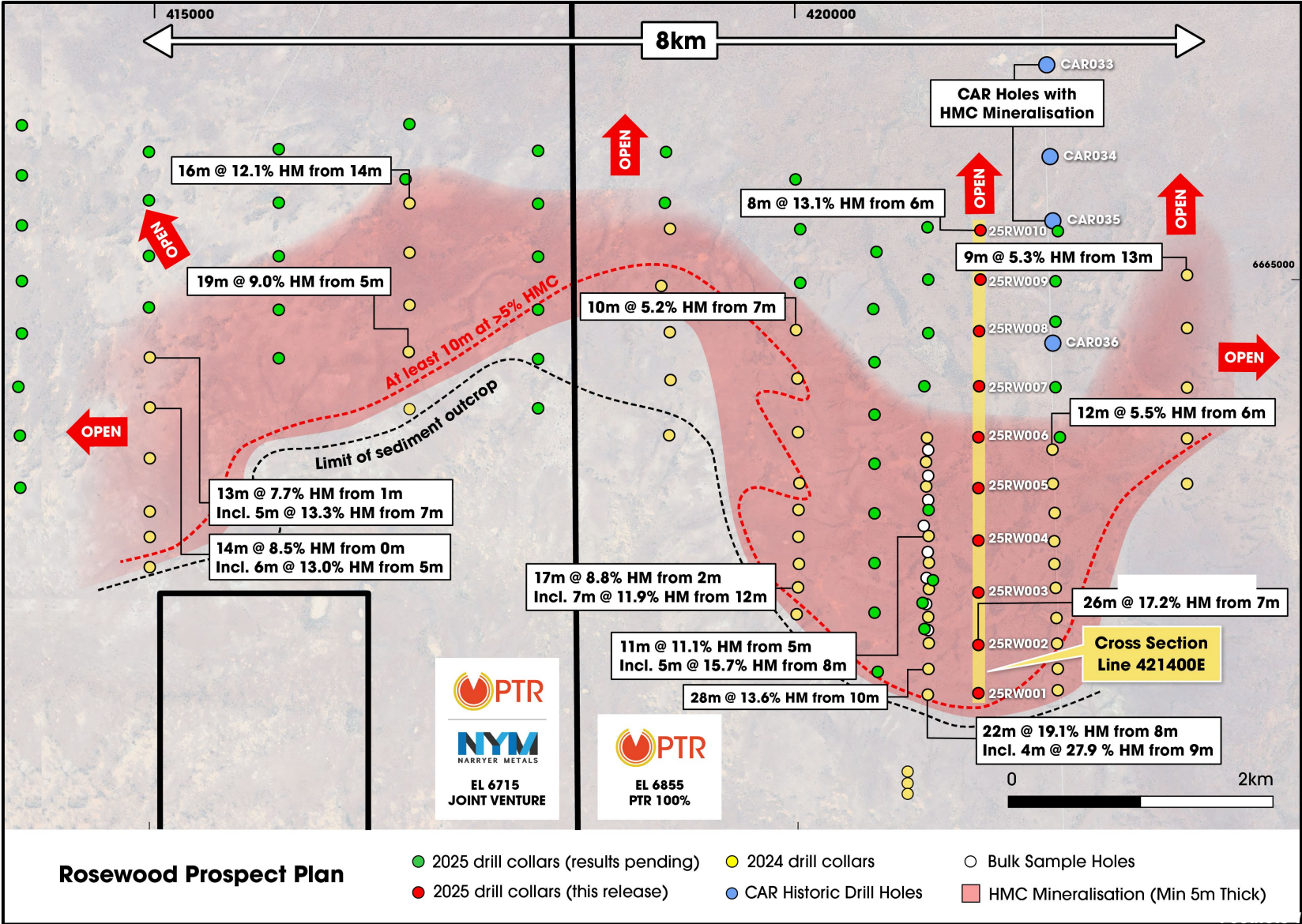


Mineralisation extends over a continuous 15km² area and remains open to the north, west and east

Mineralisation starts from 0m to 14m depth (avg 5.7m)

Ore thickness 5m – 30m

Avg intercept thickness and grade (using a 2% cut) = 12.2m and grading 8% HM

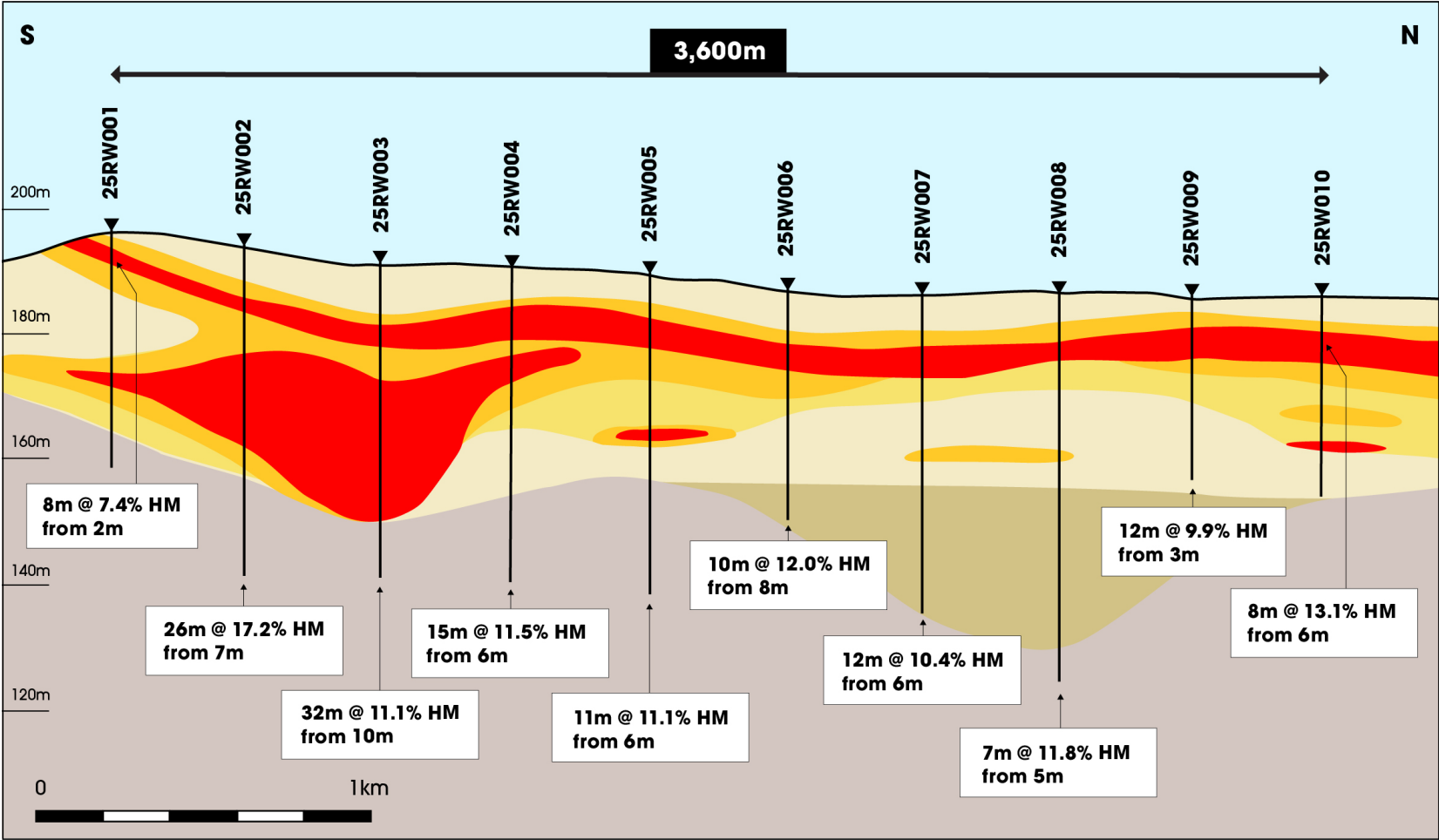


Footnote 8 & 12

Muckanippie Project – Bonanza Drill Results !



High grade HM mineralisation – thick intervals and continuous extent across widely spaced drill lines.



Rosewood Prospect
Cross Section
Line 421400E

Sediments
Older sediments
Weathered Basement

>1% HM
>3% HM
>12% HM

Drill Hole
Vertical Exaggeration = 1 : 20

Geological Cross Section 421400E showing HMS results

Footnote 12

Muckanippie Project – *Steady Stream of Results Coming*



- **HM Drill Results expected June 2025**
 - Results from a further 63 drill holes at Rosewood
 - 55 drill holes testing Saprolite HMS Prospects – Duke, Nardoo and Claypan
- **Bulk 1-tonne samples collected from Rosewood for wet processing and magnetic + static separation work.**
 - study will inform mineral recovery processing and mineral products
- **Phase 3 - Drilling from June 2025**
 - testing for further extensions of the Rosewood mineralisation and to collect more bulk sample for metallurgical testing.



March-April 2025 Drilling Operations at Rosewood Prospect



Contact

Peter Reid

Chief Executive Officer

E: preid@petratherm.com.au

T: 0435 181 705

Petratherm Limited

ASX: PTR



*Rosewood Prospect: +106 to 125 μ m - HM
Composite Fraction Sample*