



NEXUSMINERALS

**Proactive Investors Presentation
July 2018**

DISCLAIMER & COMPETENT PERSONS STATEMENT

• This document contains forward looking statements. Forward looking statements are not based on historical facts, but are based on Nexus's current expectations of future results or events. These forward looking statements are subject to risks, uncertainties and assumptions which could cause actual results or events to differ materially from the expectations described in such forward looking statements. While Nexus believes that the expectations reflected in the forward looking statements in this document are reasonable, no assurance can be given that such expectations will prove to be correct. Matters as yet not known to Nexus or not currently considered material by Nexus, may cause actual results or events to be materially different from those expressed, implied or projected in any forward looking statements. Any forward looking statement contained in this document is qualified by this cautionary statement.

• The information contained in this presentation is for informational purposes only and does not constitute an offer to issue, or arrange to issue, securities or other financial products. The information contained in this presentation is not investment or financial product advice and is not intended to be used as the basis for making an investment decision. The presentation has been prepared without taking into account the investment objectives, financial situation or particular needs of any particular person.

• No representation or warranty, express or implied, is made as to the fairness, accuracy, completeness or correctness of the information, opinions and conclusions contained in this presentation. To the maximum extent permitted by law, none of Nexus Minerals Limited, its directors, employees or agents, nor any other person accepts any liability, including, without limitation, any liability arising out of fault of negligence, for any loss arising from the use of the information contained in this presentation. In particular, no representation or warranty, express or implied is given as to the accuracy, completeness or correctness, likelihood of achievement or reasonableness or any forecasts, prospects or returns contained in this presentation nor is any obligation assumed to update such information. Such forecasts, prospects or returns are by their nature subject to significant uncertainties and contingencies.

• Before making an investment decision, you should consider, with or without the assistance of a financial adviser, whether an investment is appropriate in light of your particular investment needs, objectives and financial circumstances. Past performance is no guarantee of future performance.

• The distribution of this document in jurisdictions outside Australia may be restricted by law. Any recipient of this document outside Australia must seek advice on and observe any such restrictions.

• In particular, this presentation does not constitute an offer to sell, or a solicitation of an offer to buy, securities in the United States or to any "U.S. person" (as defined in Regulation S under the U.S. Securities Act of 1933, as amended ("Securities Act")). The securities referred to in this presentation have not been and will not be registered under the Securities Act or under the securities laws of any state in the United States. Securities may not be offered or sold in the United States or to, or for the account or benefit of, any U.S. person, unless the securities have been registered under the Securities Act or an exemption from registration is available.

• The information in this report that relates to Exploration Results, Mineral Resources or Ore Reserves is based on information compiled or reviewed by Mr Andy Tudor, who is a Member of The Australasian Institute of Mining and Metallurgy and the Australian Institute of Geoscientists. Mr Tudor is a full time employee of Nexus Minerals Limited.

• Mr Tudor has sufficient experience which is relevant to the style of mineralisation and type of deposit under consideration and to the activity which he is undertaking to qualify as a Competent Person as defined in the 2012 Edition of the 'Australasian Code for Reporting of Exploration Results, Mineral Resources and Ore Reserves'.

• The exploration results are available to be viewed on the Company website www.nexus-minerals.com. The Company confirms it is not aware of any new information that materially affects the information included in the original announcement. The Company confirms that the form and context in which the Competent Person's findings are present have not been materially modified from the original announcements of 3/5/2016, 5/5/2016, 8/6/2016, 6/7/2016, 18/7/2016, 25/7/2016, 9/9/2016, 13/10/2016, 17/10/2016, 7/2/2017, 30/3/2017, 20/6/2017, 28/7/2017, 12/9/2017, 4/10/2017, 18/10/2017, 24/10/2017, 8/11/2017, 28/11/2018, 17/1/2018, 23/1/2018, 25/1/2018, 12/2/2018, 4/4/2018, 6/4/2018, 23/4/2018, 8/5/2018, 5/6/2018 and 17/7/2018.

• Mr Tudor consents to the inclusion in the report of the matters based on his information in the form and context in which it appears.

• No Ore Reserves have currently been defined on the Pinnacles JV Gold Project, nor the Wallbrook Gold Project. There has been insufficient exploration and technical studies to estimate an Ore Reserve and it is uncertain if further exploration and/or technical studies will result in the estimation of an Ore Reserve. The potential for the development of a mining operation and sale of ore from the Pinnacles JV Gold Project or the Wallbrook Gold Project has yet to be established.

Nexus Minerals Limited	ASX: NXM
Shares	88.6 million
Share Price (18/7/2018)	AUD \$0.076
Market Cap (18/7/2018)	AUD \$6.7million
Cash (30/6/2018)	AUD \$3.9million
Shareholders	800
Top 20	49.90%

BOARD AND MANAGEMENT	
Chairman	Mr Paul Boyatzis
Managing Director	Mr Andy Tudor
Non - Executive Director	Dr Mark Elliott
Non - Executive Director	Mr Bruce Maluish
Company Secretary	Mr Phil MacLeod

COMPANY SNAPSHOT

COMMODITY **GOLD**

STATUS **EXPLORATION**

LOCATION **KALGOORLIE GOLDFIELDS**

WESTERN AUSTRALIA

➤ **SARACEN GOLD MINES NEW 6% SHAREHOLDER**

➤ **JV with SARACEN GOLD MINES (ASX:SAR)**

➤ **PROSPECTIVE REGIONAL TENEMENT PACKAGE**

☐ **Wallbrook Gold Project**

☐ **Pinnacles Gold Project**

➤ **PROFESSIONAL TEAM**

☐ **GOLD EXPLORATION FOCUS**

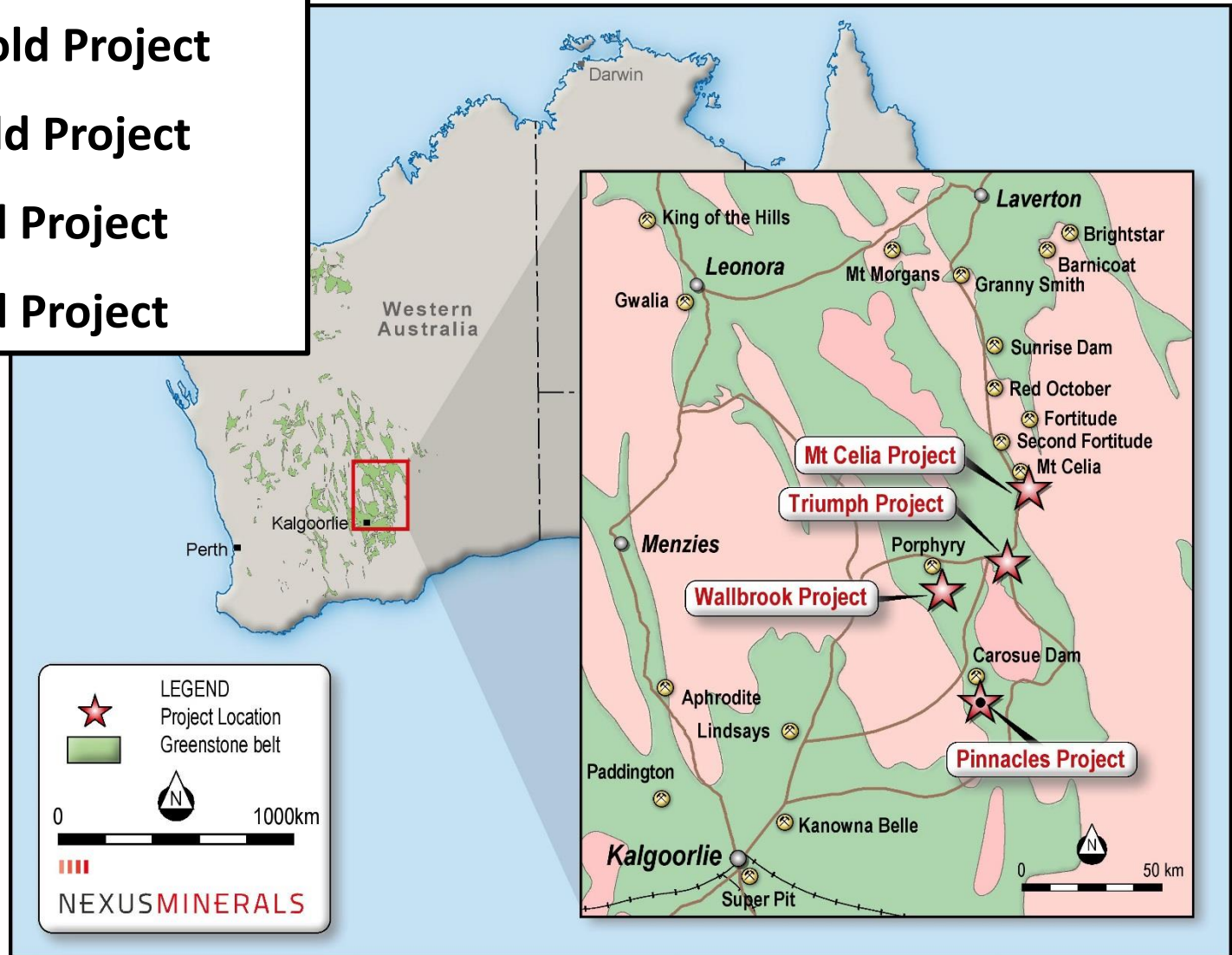
☐ **DEVELOPMENT EXPERIENCE**

➤ **EXPLORING FOR LARGE SCALE GOLD DEPOSITS**

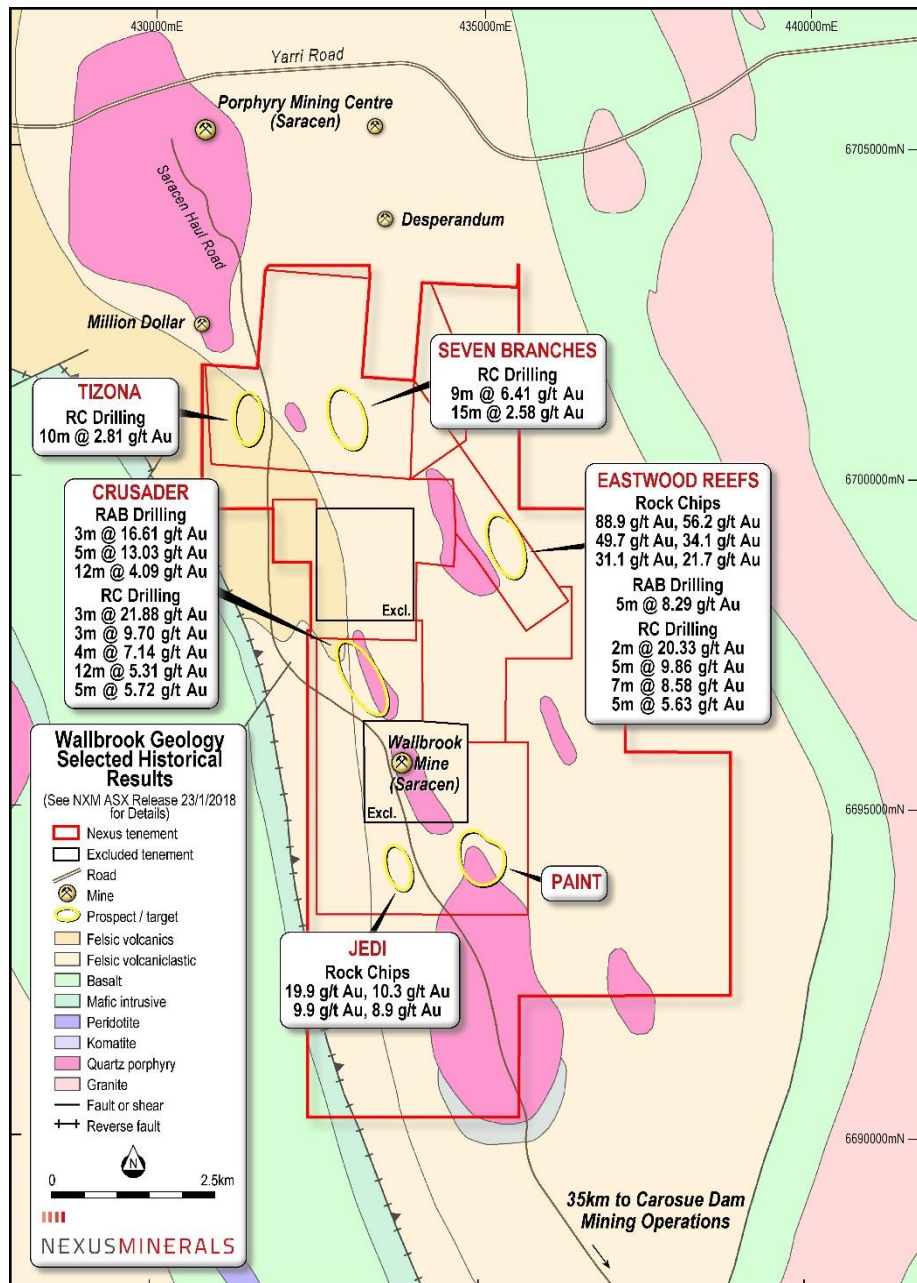


Goldfields Western Australia

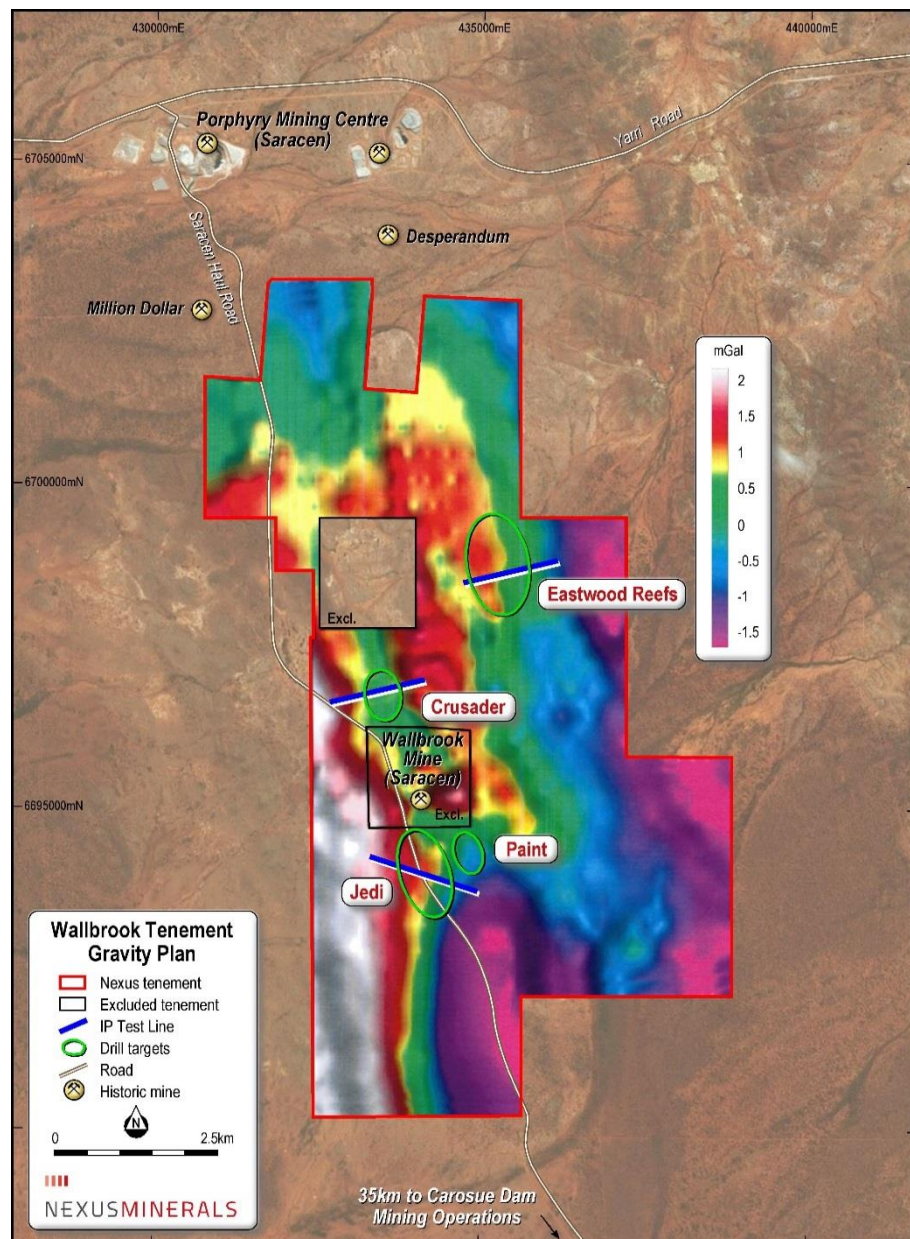
- Wallbrook Gold Project
- Pinnacles Gold Project
- Triumph Gold Project
- Mt Celia Gold Project



WALLBROOK GOLD PROJECT

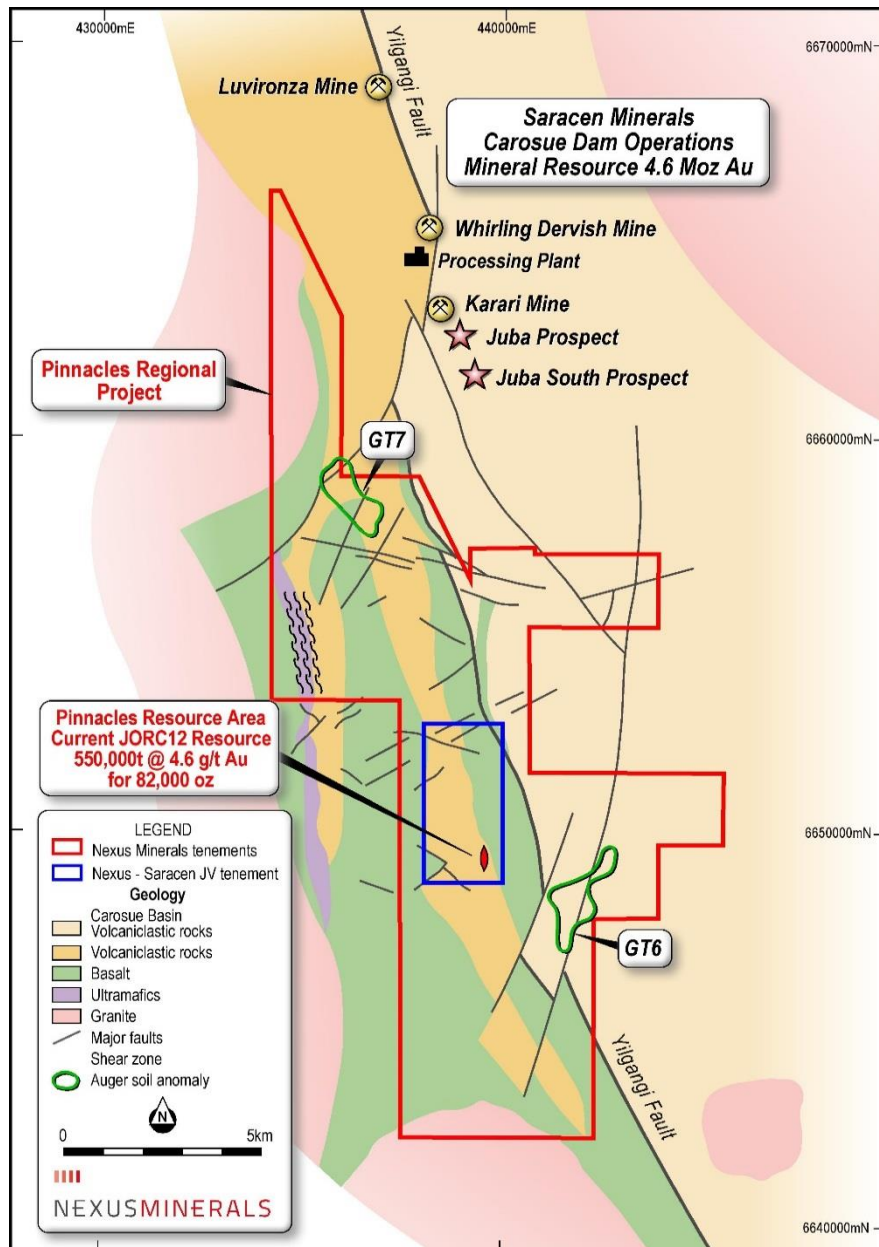


- The Wallbrook Gold Project is located 140km northeast of Kalgoorlie and 35km north of Saracens Carosue Dam Operations
- Project acquired from Saracen Gold Mines Feb 2018
- Nexus owns 58km² of contiguous tenements
- Wallbrook considered highly prospective for gold mineralisation associated with porphyry intrusions
- Wallbrook historical data search reveals significant gold assay results from rock chips, and RAB, RC and diamond drilling campaigns
- Regional gold deposits located near the “tops” of porphyry intrusions, and shear zones within altered intruded host rocks
- Wallbrook region historical production of over 350,000 ounces gold (none of this production was from the Nexus Wallbrook tenements)
- Any future ore mined from the project tenements may be purchased by Saracen for processing through its Carosue Dam Operations



Exploration Activities 2018

- Historic data compilation, review and exploration strategy development
- Site visits to Saracen's Wallbrook, Porphyry and Karari gold mines - comparative mineralisation style
- Petrology on mineralisation and host rocks
- Geological mapping and structural interpretation
- Gravity survey covering entire Wallbrook project
- Three test lines of Induced Polarisation and Resistivity geophysical survey on selected targets
- Modelling of historic magnetic data
- Proof of exploration concepts – drill targets selected
- 3,996m RC drill program completed late June testing 4 prospects - results due August



Geology

- 125km² North-south trending Archaean greenstone sequence
- East of the Yilgarni Fault Carosue Basin sediments dominate
- West of the Yilgarni Fault a more mafic dominated package is observed consisting of volcaniclastic sediments intercalated with basalt and ultramafic rock units.

Structure

- The region is cut by the Yilgarni Fault – deep mantle tapping structure. A series of faults with offsets of tens to hundreds of metres cross cut the Yilgarni Fault
- These cross cutting faults are particularly common in the Carosue Dam region as the greenstone belt passes through a relatively narrow “neck” between two large granitoids

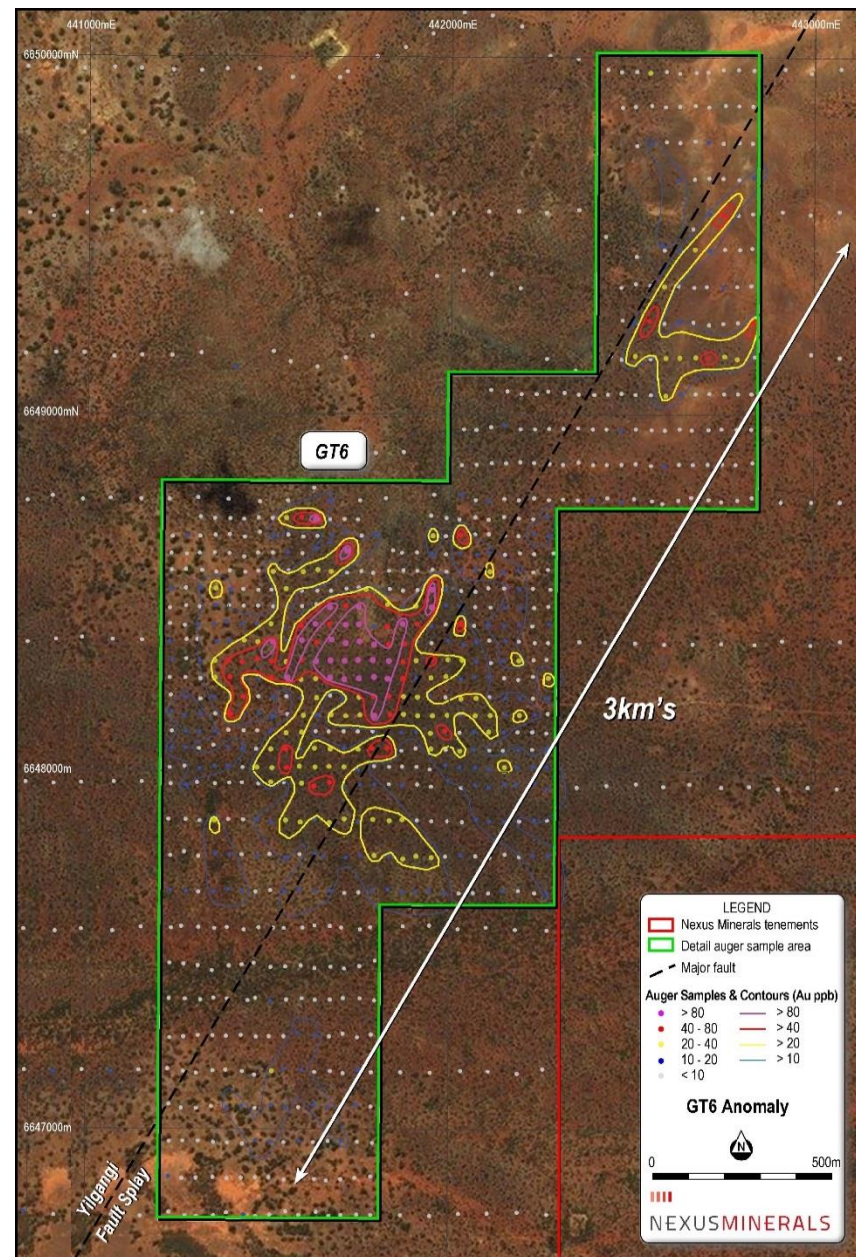
Gravity

- Nexus Gravity survey over the tenement successfully identified and confirmed interpreted regional stratigraphy
- Gravity defines the prospective corridor of volcaniclastic sediments that host the Carosue Dam gold deposits

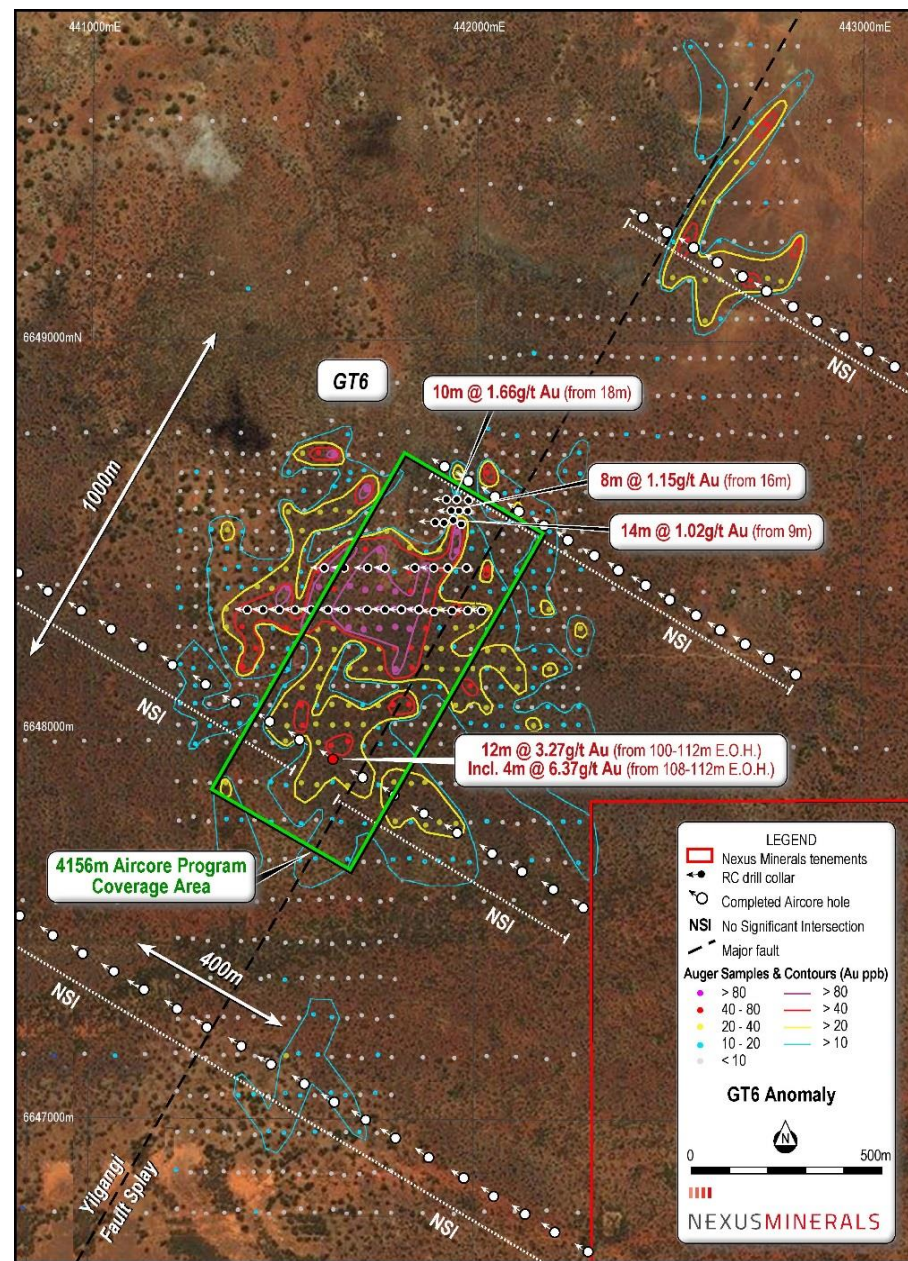
Mineralisation

- Mineralisation is known to occur proximal to, and both east and west of the Yilgarni Fault
- Current Exploration Focus – GT6

- Anomalous Au (>9ppb Au) defined over 3.0km x 600m
- Core of multiple elevated results Au max 619ppb
- Au pathfinder elements As and W confirm the anomaly
- Major NE/SW fault splay off the Yilgarni Fault
- GT6 anomaly exhibits “Carosue Dam Corridor” style Au features
 - *Elevated gold and pathfinder geochemistry*
 - *Hosted in volcanoclastic sediments*
 - *Located on NE/SW fault splay off the Yilgarni Fault*
 - *Positioned over a gravity low*
 - *Mineralisation hosted in quartz + carbonate + hematite + pyrite + albite alteration*



- First Pass drilling completed early 2018
- Multiple wide anomalous gold intersections incl:
 - 12m @ 3.27g/t Au, incl 4m @ 6.37g/t Au (from 108m to EOH)
 - 10m @ 1.66g/t Au (from 18m)
 - 14m @ 1.02g/t Au (from 9m)
 - 8m @ 1.15g/t Au (from 16m)
- Features of mineralised zones:
 - Wide zones of elevated gold grades
 - Elevated quartz-hematite abundance directly related to higher gold grades
 - Weathered volcanoclastic sediment lithology
 - Mineralisation hosted within regional gravity low and adjacent to major regional structure
- June 2018 – Recently completed 4,156m Aircore drilling program to test 1,000 x 400m core of the anomalous zone – results due August



NEXUS 6 MONTH PROGRAM

	July 2018	August 2018	September 2018	October 2018	November 2018	December 2018
Pinnacles	Aircore Drilling GT6			RC Drilling GT6		
		Aircore Drilling GT6 Result Interpretation				
			GT7 Geological & Structural Mapping			
Wallbrook	RC Drilling 4 Target Areas	RC Drilling Result Interpretation			RC Drilling	
			Detailed Gravity & IP Surveys			
		Geological & Structural Mapping				

Why Nexus Minerals?

- ✓ Prospective Goldfields Tenement Package
- ✓ Major gold producer Saracen Gold Mines – shareholder, JV partner and supporter of Nexus district exploration activities
- ✓ Active gold explorer in multi million ounce Au region – majority largely underexplored
- ✓ Two large highly prospective tenement packages – large deposit exploration focus
- ✓ Systematic exploration of projects – utilising multiple disciplinary techniques
- ✓ Access to mill infrastructure – Saracens Carosue Dam processing facility
- ✓ Professional & Experienced Management Team
- ✓ \$3.9 million Cash on Hand (30/6/2018)

Contact:

Mr Andy Tudor

Managing Director

andy.tudor@nexus-minerals.com

Nexus Minerals Limited

ASX:NXM

ABN: 96 122 074 006

**PO Box 2803,
West Perth WA 6872**

T: +61 8 9481 1749

W: www.nexus-minerals.com

Thank You