



Flynn Gold

Corporate Presentation Li-Au Projects, WA

August 2023

Exploring for lithium and gold in Western Australia

Important Notice & Disclaimer

This document is issued by Flynn Gold Limited ("Flynn Gold") to provide summary information about Flynn Gold and its associated entities and their activities current as at the date of this document. The information contained in this document is of general background and does not purport to be complete. It is intended only for those persons to whom it is delivered personally by or on behalf of Flynn Gold. By attending this presentation, you represent and warrant that (i) if you are in Australia, you are a person to whom an offer of securities may be made without a disclosure document (as defined in the Corporations Act 2001 (Cth) ("Corporations Act")) on the basis that you are exempt from the disclosure requirements of Part 6D.2 in accordance with Section 708(8) or 708(11) of the Corporations Act; (ii) if you are in the United States, you are a qualified institutional buyer (as defined under Rule 144A under the U.S. Securities Act); (iii) if you are outside Australia and the United States, you are a person to whom an offer and issue of securities can be made outside Australia without registration, lodgement or approval of a formal disclosure document or other filing in accordance with the laws of that foreign jurisdiction. If you are not such a person, you are not entitled to attend this presentation. Please return this document and any copies and do not provide this document to any other person.

This document is not, and should not be considered as, an offer or an invitation to acquire securities in Flynn Gold or any other financial products and neither this document nor any of its contents will form the basis of any offer, invitation, contract or commitment. This document is not a prospectus and does not contain all of the information which would be required to be disclosed in a prospectus.

In particular, this document does not constitute an offer to sell, or a solicitation of an offer to buy, securities in the United States. Securities may not be offered or sold in the United States unless the securities have been registered under the US Securities Act of 1933 or an exemption from registration is available.

Neither Flynn Gold nor any of its officers, employees, related bodies corporate, affiliates, agents or advisers guarantees or makes any representations or warranties, express or implied, as to, or takes responsibility for, the accuracy or reliability of the information contained in this document. Flynn Gold does not represent or warrant that this document is complete or that it contains all material information about Flynn Gold or which a prospective investor or purchaser may require in evaluating a possible investment in Flynn Gold or acquisition of Flynn Gold shares. Nothing contained in this document nor any information made available to you is, or should be relied upon as, a promise, representation, warranty or guarantee, whether as to the past, present or the future. Neither Flynn Gold nor any of its officers, employees, related bodies corporate, affiliates, agents or advisers has carried out due diligence investigations in connection with the preparation of this document. You must conduct your own independent investigations and enquiries as you deem fit. The information set out in this document does not constitute or purport to be a recommendation by Flynn Gold, its officers, employees, agents or advisers and has been prepared without taking into account the objectives, financial situation or needs of its recipients. The information in this document does not constitute financial product advice (nor investment, taxation or legal advice).

To the maximum extent permitted by law, Flynn Gold and its related bodies corporate and each of their respective directors, employees, officers, affiliates, agents and advisers expressly disclaim any and all liability (including without limitation for negligence) for representations or warranties or in relation to the accuracy or completeness of the information, statements, opinions or matters, express or implied, contained in, arising out of or derived from, or for omissions from, this document including, without limitation, any historical financial information, any estimates or projections and any other financial information derived therefrom. In particular, this document does not constitute, and should not be relied upon as, a promise, representation, warranty or guarantee as to the past, present or the future performance of Flynn Gold.

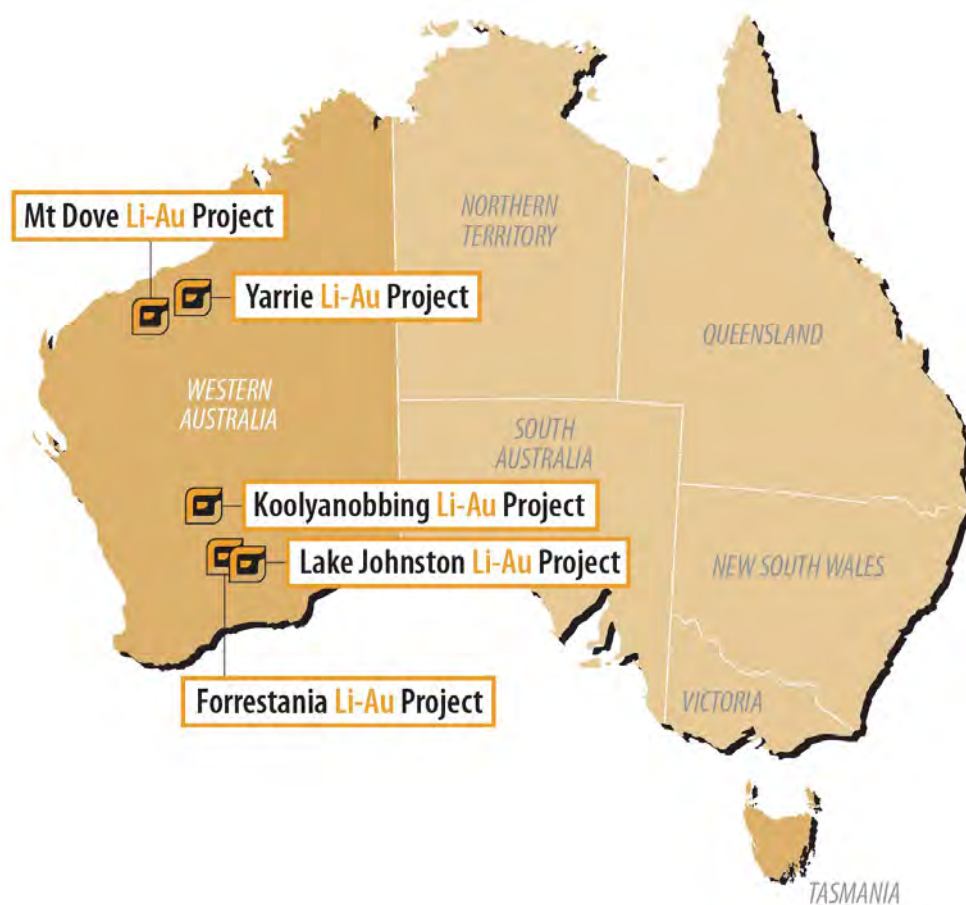
This document contains certain forward-looking statements and opinion which are provided as a general guide only and should not be relied on as an indication or guarantee of future performance and involve known and unknown risks, uncertainties and other factors, many of which are outside the control of Flynn Gold. Past performance is not necessarily a guide to future performance and no representation or warranty is made as to the likelihood of achievement or reasonableness of any forward looking statements or other forecast.

Information in this document ("Confidential Information") is confidential and by accepting the invitation and attending this presentation you agree to keep this information confidential and not to disclose it to anyone within your organisation except on a need-to-know basis and subject to these restrictions, or to anyone outside your organisation. You must not copy, use, publish, record or reproduce any of the Confidential Information or directly or indirectly disclose any Confidential Information to any person without the prior written consent of Flynn Gold, which may be withheld in its absolute discretion.

All figures in this document are in Australian dollars (AUD) unless stated otherwise.

Flynn Gold – WA Projects

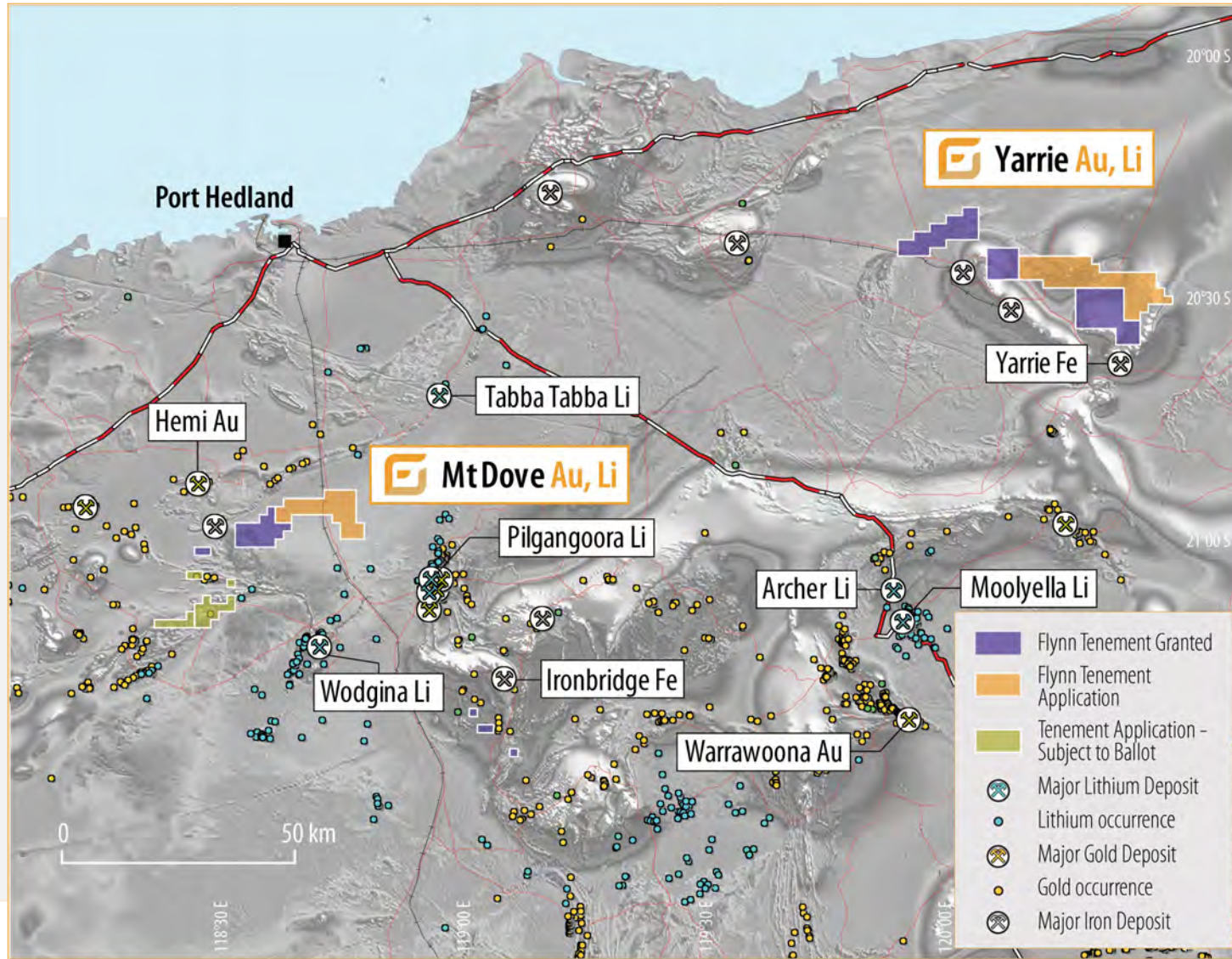
Flynn Gold is an Australian explorer building a strategic lithium and gold portfolio in Western Australia, targeting hard rock lithium pegmatites and intrusive related gold deposits.



The Company's WA portfolio includes a 100% interest in:

- Mt Dove Li-Au Project
 - Yarrie Li-Au Project
 - Forrestania Li-Au Project
 - Lake Johnston Li-Au Project
 - Koolyanobbing Li-Au Project
- 1,290km² of exploration tenure secured in since 2022 (21 granted ELs and 10 EL applications)
 - Projects are located near the operating lithium mines at Pilgangoora, Wodgina, Mt Holland and Mt Cattlin
 - Exploration activity about to accelerate following recent tenement approvals

Pilbara – Lithium and Gold Projects



Two projects located in the highly prospective Pilbara Craton

- Mt Dove
- Yarrie

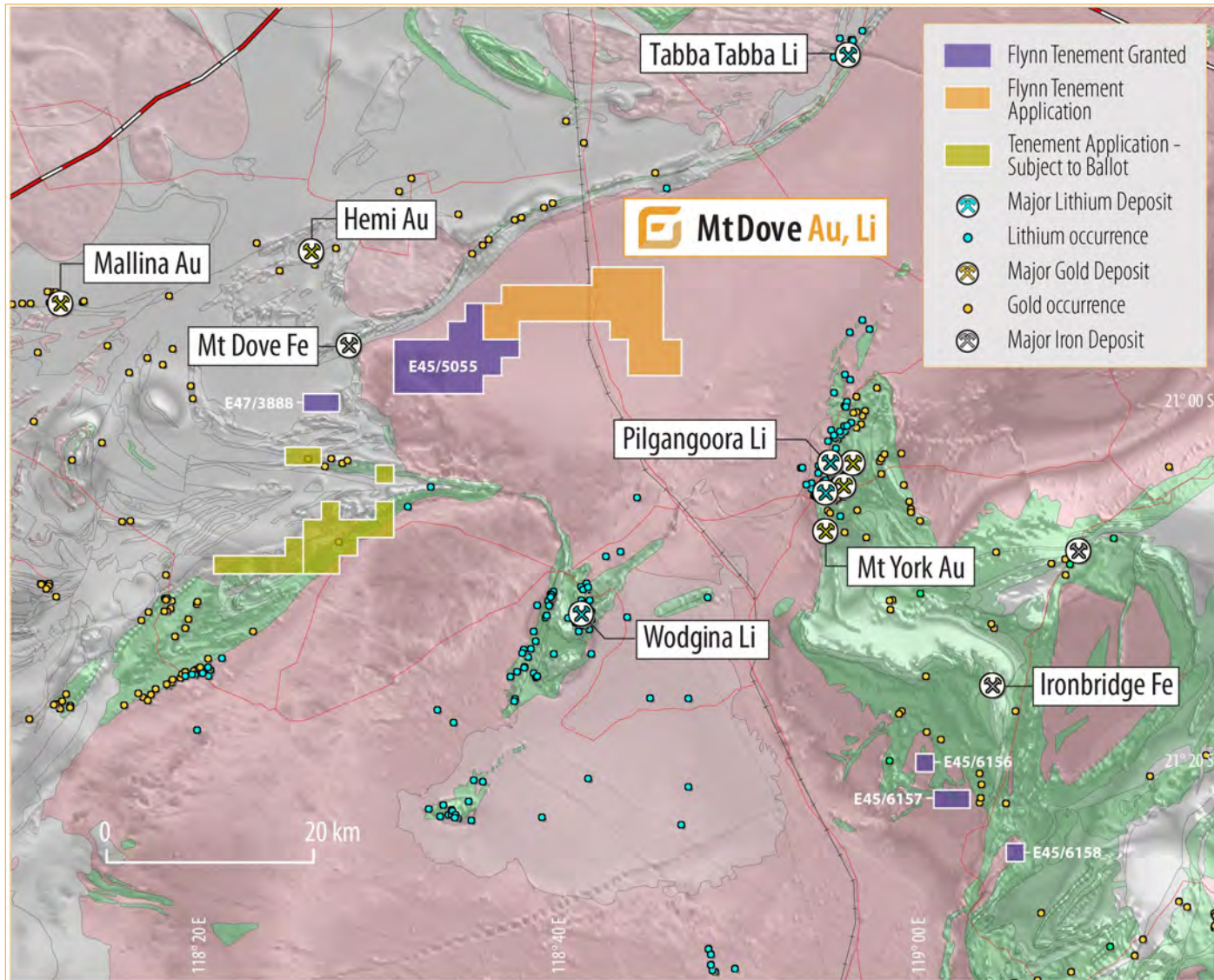
Mt Dove Project is located near the large lithium pegmatite deposits of:

- Pilgangoora (PLS)
- Wodgina (Albemarle/MIN JV);
- and the large gold discovery at
- Hemi (DEG)

The newly discovered Andover lithium project (AZS) is located 135km west of Mt Dove

Yarrie Project is located near the iron ore deposits at Yarrie, Shay Gap and Nimingarra and 80km north of the Archer lithium pegmatite deposit

Pilbara – Mt Dove Li-Au Project



Source: ¹ASX:DEG announcement dated 15 June 2023 ²ASX:PLS announcement dated 6 October 2021

³ASX:MIN announcement dated 23 October 2018

Building a strong ground position near world class lithium and gold deposits including:

- Hemi (Au)
- Pilgangoora (Li, Ta)
- Wodgina (Li, Ta)



The **Hemi** discovery is an intrusion-hosted gold deposit new to the Pilbara Region. Gold occurs as stringer and disseminated sulphide rich zones. Hemi has a Mineral Resource Estimate of 9.5Moz¹

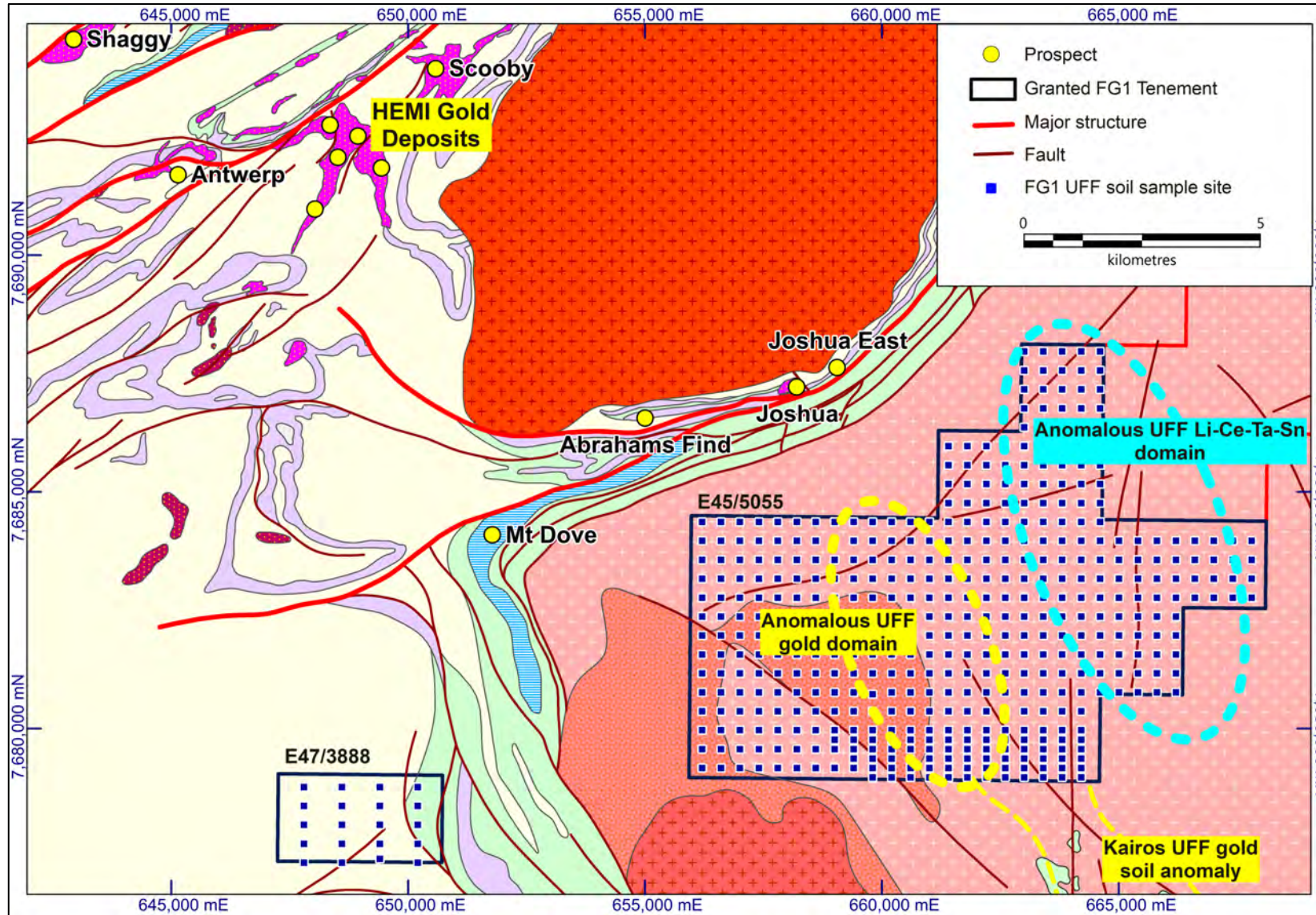


The **Pilgangoora** Lithium tantalum pegmatite deposit with a total resource² of 309 Mt grading 1.14% Li₂O and 105ppm Ta₂O₅, is a globally significant hard-rock lithium-tantalum deposit.



The **Wodgina** Total Mineral Resource³ for pegmatite and the tailings material, stands at 259.2 Mt at 1.17% Li₂O, making it one of the largest hard rock lithium deposits globally

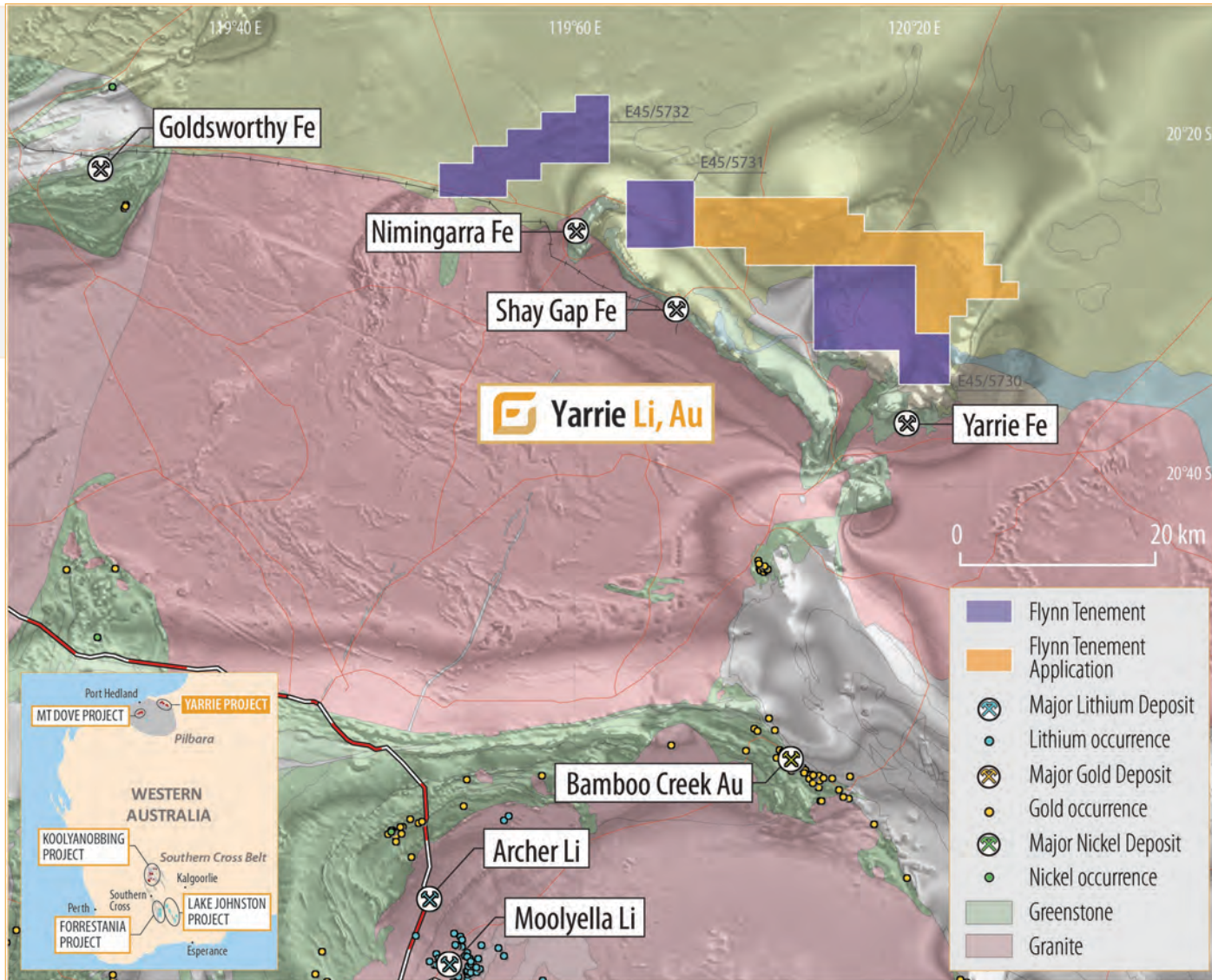
Pilbara – Mt Dove Li-Au Project



First soil sampling program at Mt Dove identifies Lithium and Gold anomalies

- Ultra-fines Fraction (UFF) Soil sampling technique used, which was developed by CSIRO to look through shallow cover.
- Survey completed on very wide spacing, generally 400m x 400m grid.
- Infill sampling program to commence shortly to confirm anomalies and assist in targeting ahead of future drilling program.

Pilbara – Yarrie Li-Au Project

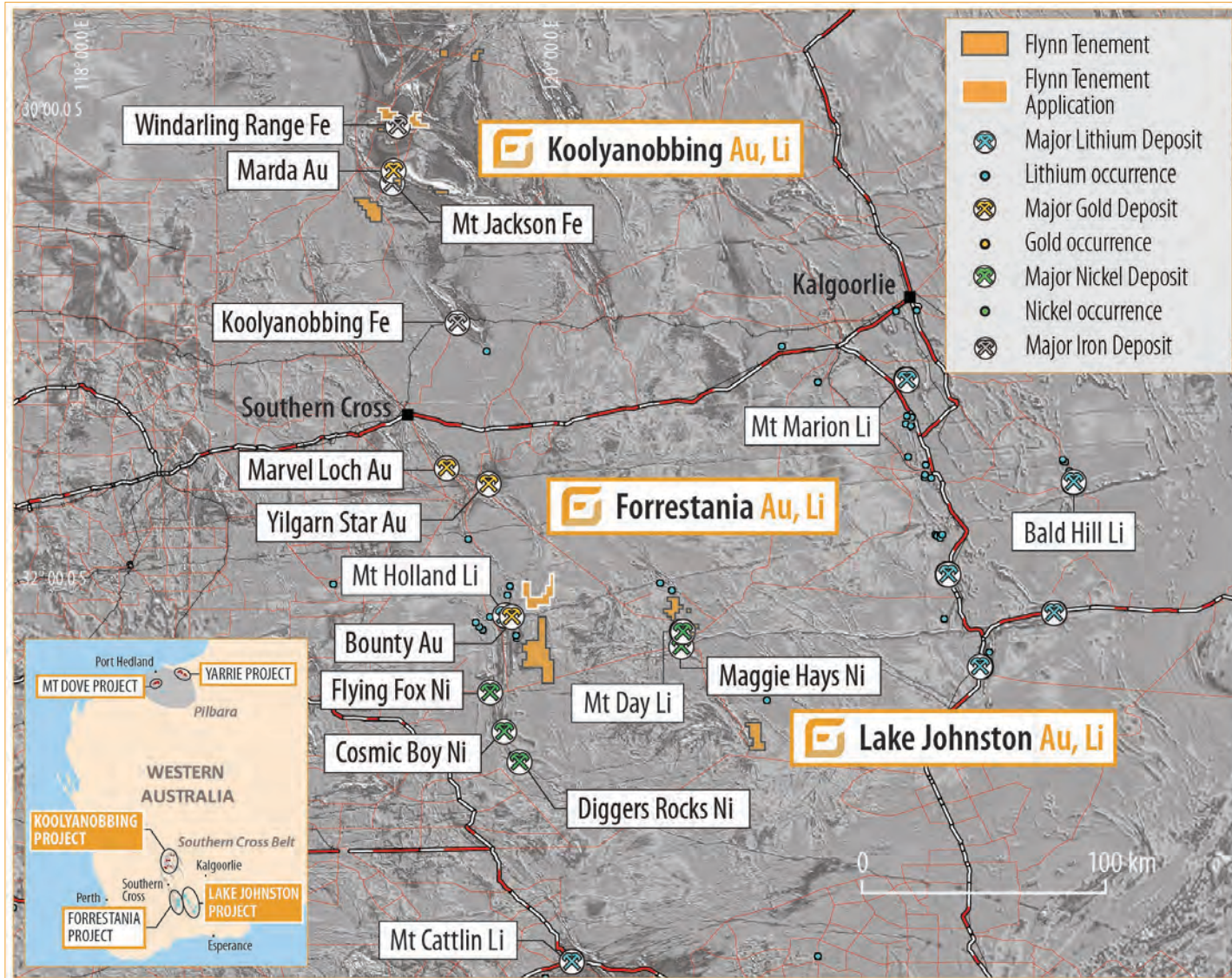


Source: ¹Refer ASX:GL1 announcement dated 15 December 2022

The Yarrie Project comprises three exploration licences and one EL Application targeting lithium, gold, copper and iron ore mineralisation in the Shay Gap greenstone belt and Eel Creek Embayment, located on the northern margin of the Pilbara Craton

- The Archer lithium deposit (18.0 million tonnes at 1.0% Li₂O¹), which is located ~80km south of the Yarrie Project, comprises a swarm of spodumene bearing pegmatites over a 3km by 1km zone
- Very limited historical exploration undertaken for lithium, gold and copper on the project to date
- The project is highly prospective for iron ore, being close to historic mining operations
- The project is close existing rail infrastructure

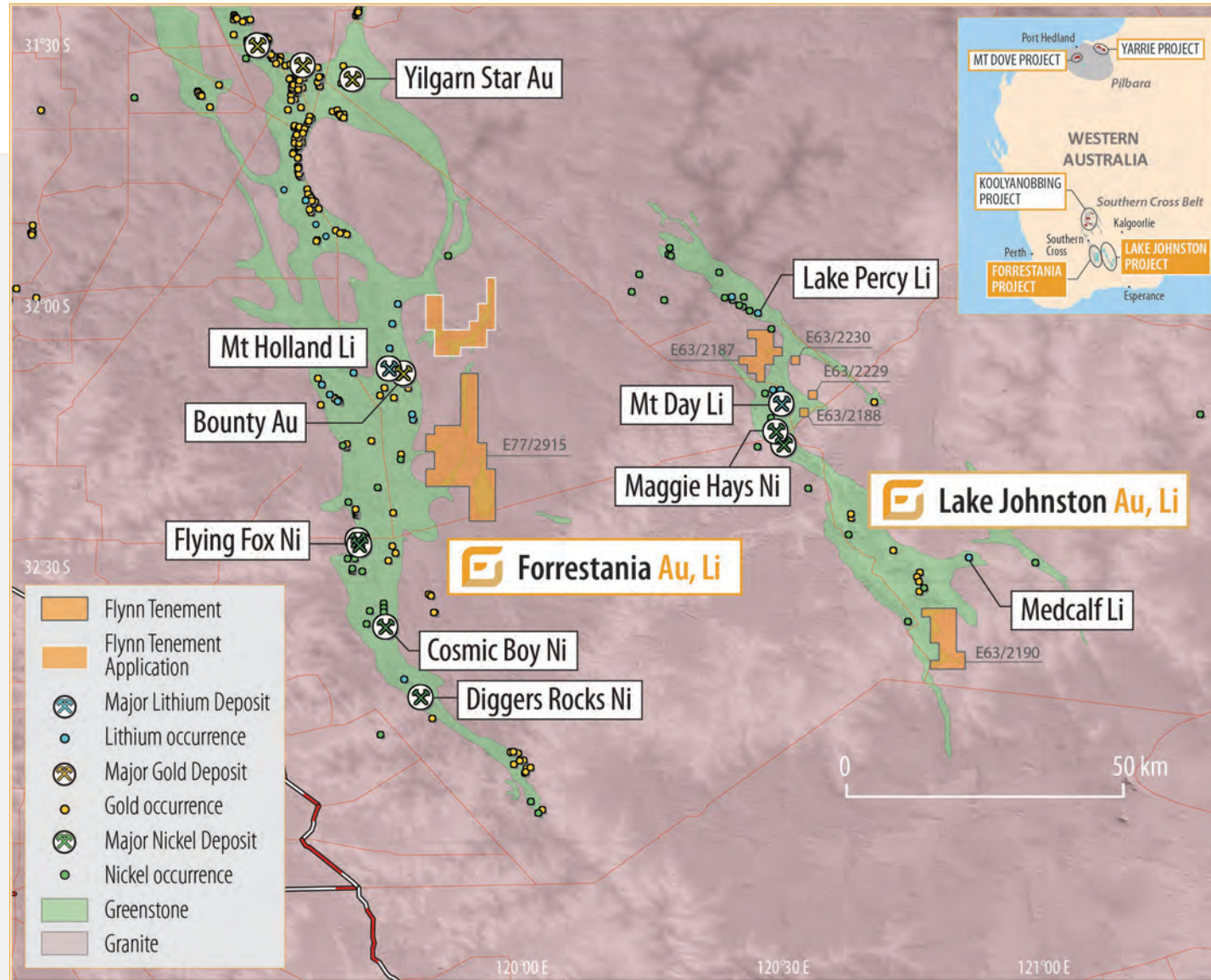
Southern Cross Belt – Lithium and Gold Projects



Three substantial lithium-gold projects located in the Southern Cross province of the Yilgarn Craton

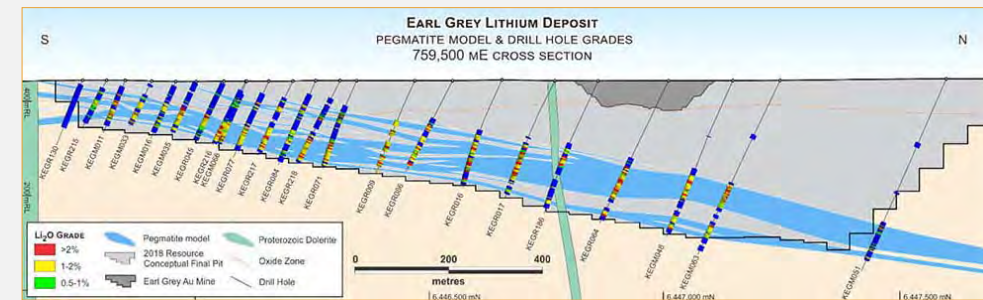
- **Koolyanobbing**
- **Forrestania**
- **Lake Johnston**
- Flynn Gold's Southern Cross Belt Projects are located near:
 - ❖ World Class Mt Holland lithium pegmatite deposit (Wesfarmers/SQM)
 - ❖ Mt Cattlin lithium mine (Allkem)
- The Southern Cross Belt also contains significant:
 - ❖ Gold deposits (Bounty, Marvel Loch, Yilgarn Star, Marda)
 - ❖ Nickel deposits (Flying Fox, Maggie Hays)
 - ❖ Iron deposits (Windarling Range, Mt Jackson, Koolyanobbing)

Southern Cross Belt – Forrestania/Lake Johnston Li-Au Projects



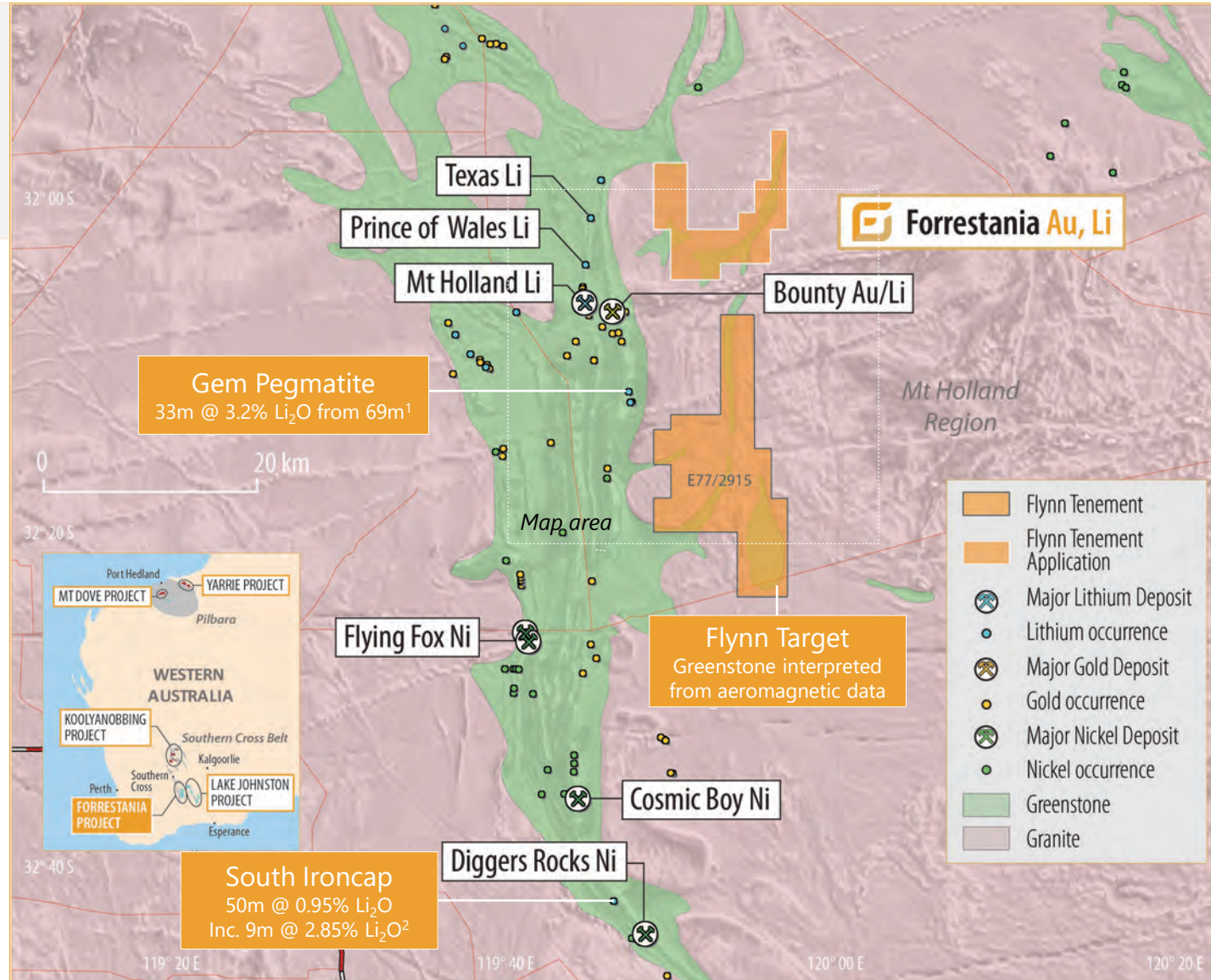
Exploration target: Mt Holland (Earl Grey) lithium pegmatite deposit – Potential to transform the Company

- Historically three varieties of pegmatite have been recognised within the Mt Holland District:
 - Sub-indent complex zoned pegmatite containing spodumene and albite in addition to coarse perthite and quartz
 - Sub-indent albitic aplite rich in black tourmaline and commonly containing cassiterite
 - Sub-indent coarse cleavelanditic albite veins with minor apatite and spodumene
- These pegmatites appear to be abundant on the eastern margin of the Forrestania Greenstone belt, where several of Flynn's tenements occur



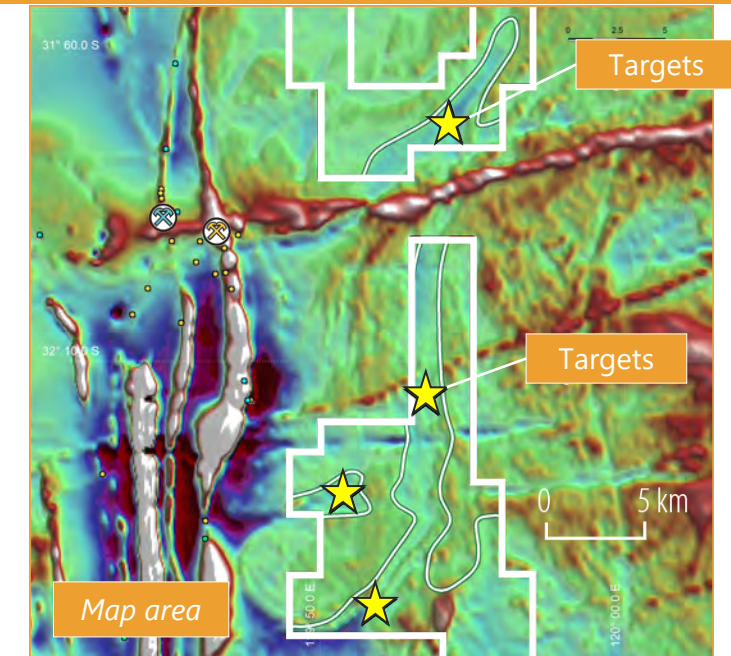
- Gently dipping deposit
- Averaging 70m in width
- Low strip ratio
- Consistent grades

Forrestania Li-Au Project – Mt Holland Region



- The greenstone/granite contact extends further east than previously thought
- This has major implications for the lithium exploration potential of Flynn's tenements

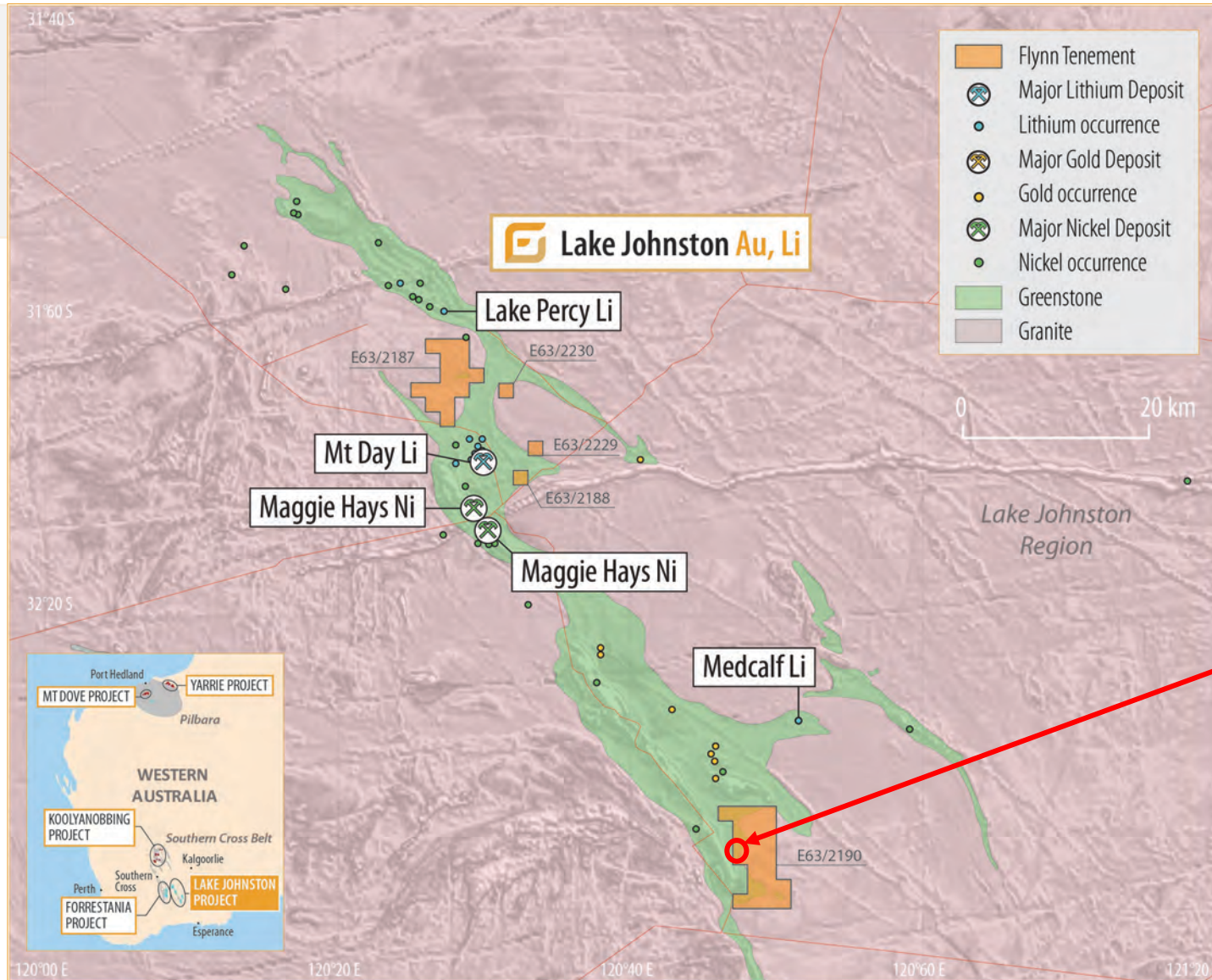
New project located near the world class lithium pegmatite deposit at Mt Holland



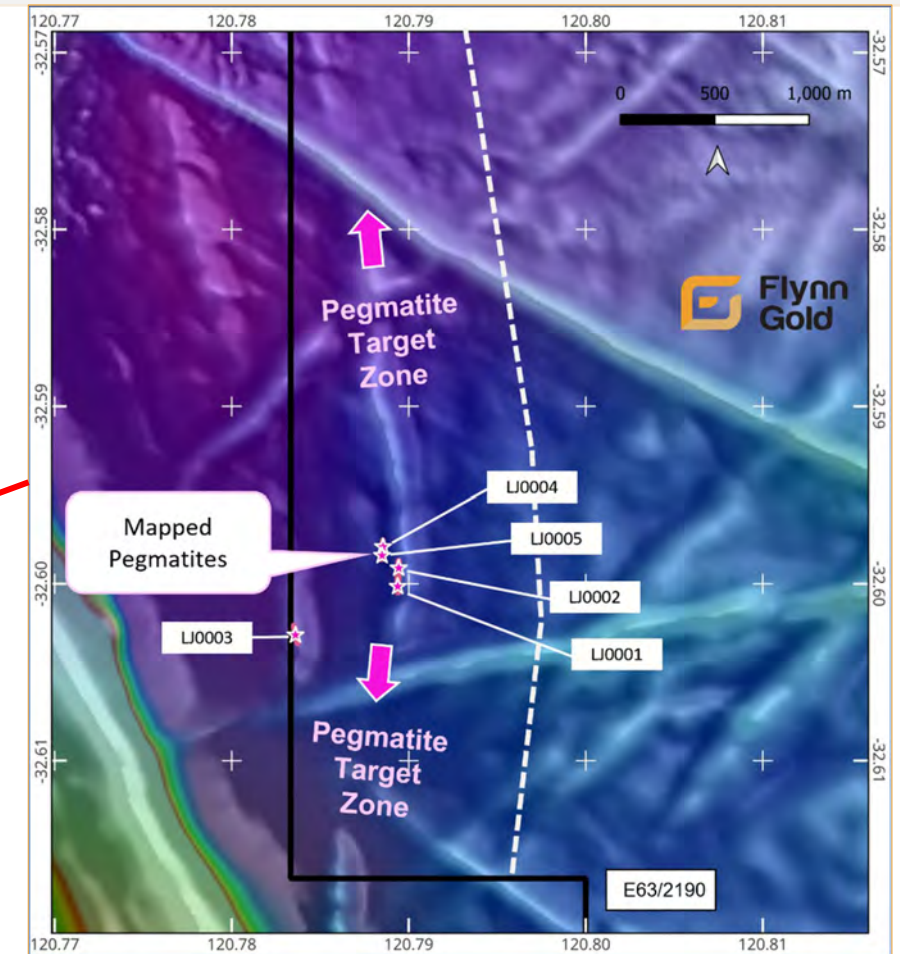
Source: ¹Refer to ASX:FRS ASX announcement dated 12 January 2022

² Refer to ASX:MZN ASX announcement dated 17 May 2016

Lake Johnston Li-Au Project

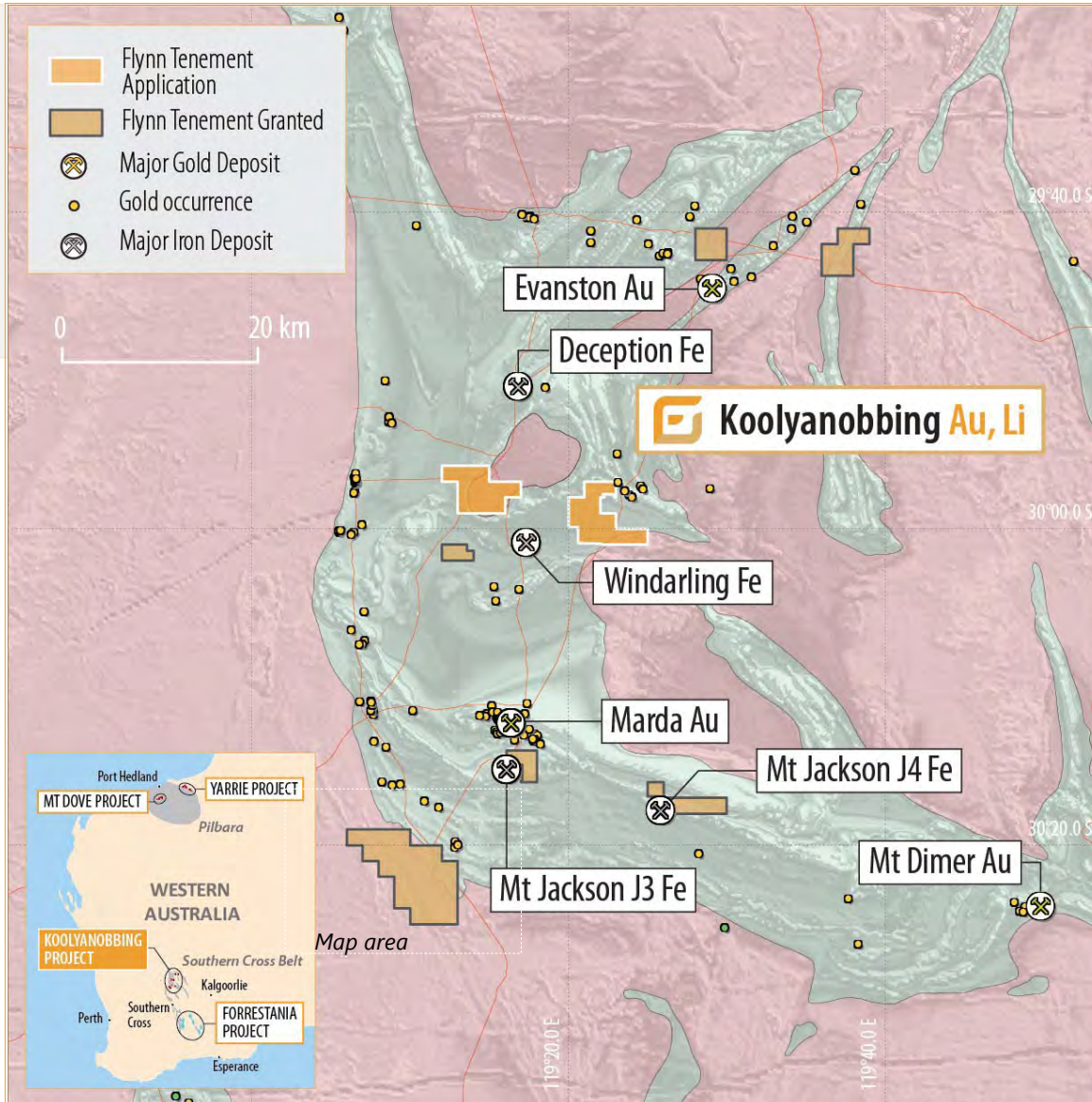


- 5 Exploration Licences granted in July 2023
- Recent field reconnaissance has identified unmapped pegmatites within a 5km N-S trending target zone¹



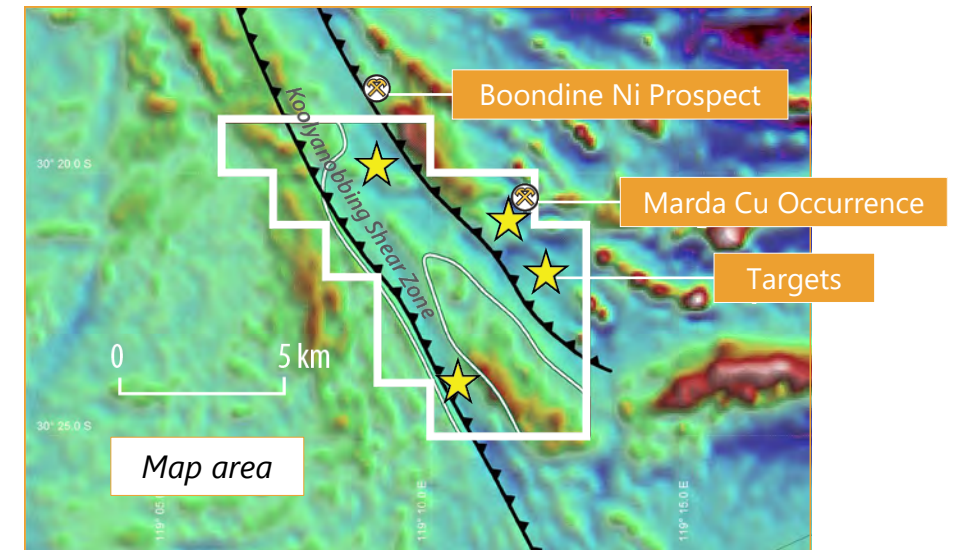
Source: ¹Refer to ASX:FG1 announcement dated 4 August 2023

Southern Cross Belt – Koolyanobbing Au-Li Project

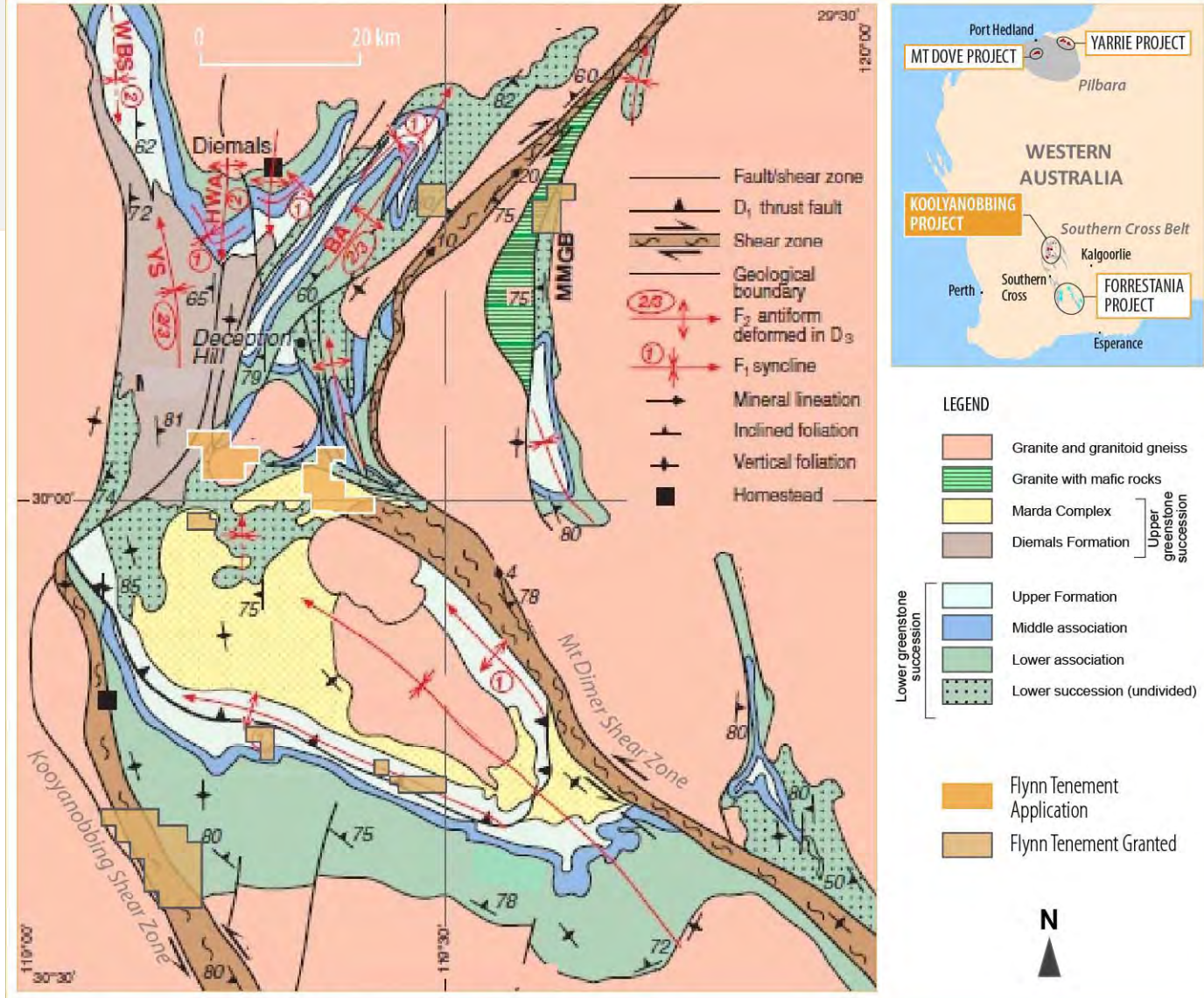


The Koolyanobbing Li-Au Project comprises eight exploration licence/applications targeting gold and lithium mineralisation in the Marda-Diemals greenstone belt, located in the Southern Cross Belt of the Yilgarn Craton

The Marda-Diemals greenstone belt has received little or no modern exploration for lithium pegmatites



Southern Cross Belt – Koolyanobbing Au-Li Project



The Koolyanobbing and Mt Dimer Shear zones are crustal-scale ductile shear zones, 5–15 km wide and approximately 450 km long

- Targeting gold and lithium in major structures along granite/greenstone contacts
- Focus also on intrusive related gold systems and Penny West style high-grade lodes



Marda Gold Project¹

Source: Map - GSWA, Geology of the Bungabbin 1:100,000 Sheet, Chen, S. F. and Wyche, S., 2003.

¹Ramelius Resources (ASX:RMS) website

Flynn Gold – WA Li-Au Strategy

Conclusions

- Targeting large lithium pegmatite deposits and intrusive related gold systems
- Encouraging early results from Mt Dove and Lake Johnston fieldwork
- On ground exploration to re-commence at Mt Dove in Aug/Sep 2023
- Exploration at Forrestania and Lake Johnston projects to include geological mapping, rock chip sampling and systematic soil sampling in areas of shallow cover
- Initial air core drilling programs will be considered pending results of the early-stage assessment programs
- Evaluating potential to acquire more advanced opportunities in proven Li-Au provinces

Exposure to lithium exploration provides Flynn with excellent leverage to the EV boom





Neil Marston

Managing Director & Chief Executive Officer

+61 3 9692 7222

neil@flynnngold.com.au

www.flynnngold.com.au

Victoria Humphries / Ben Creagh

Media & Investor Relations

+61 (0)431151676 / +61 (0)417464233

victoria@nwrcommunications.com.au

benc@nwrcommunications.com.au

For more information, please contact us

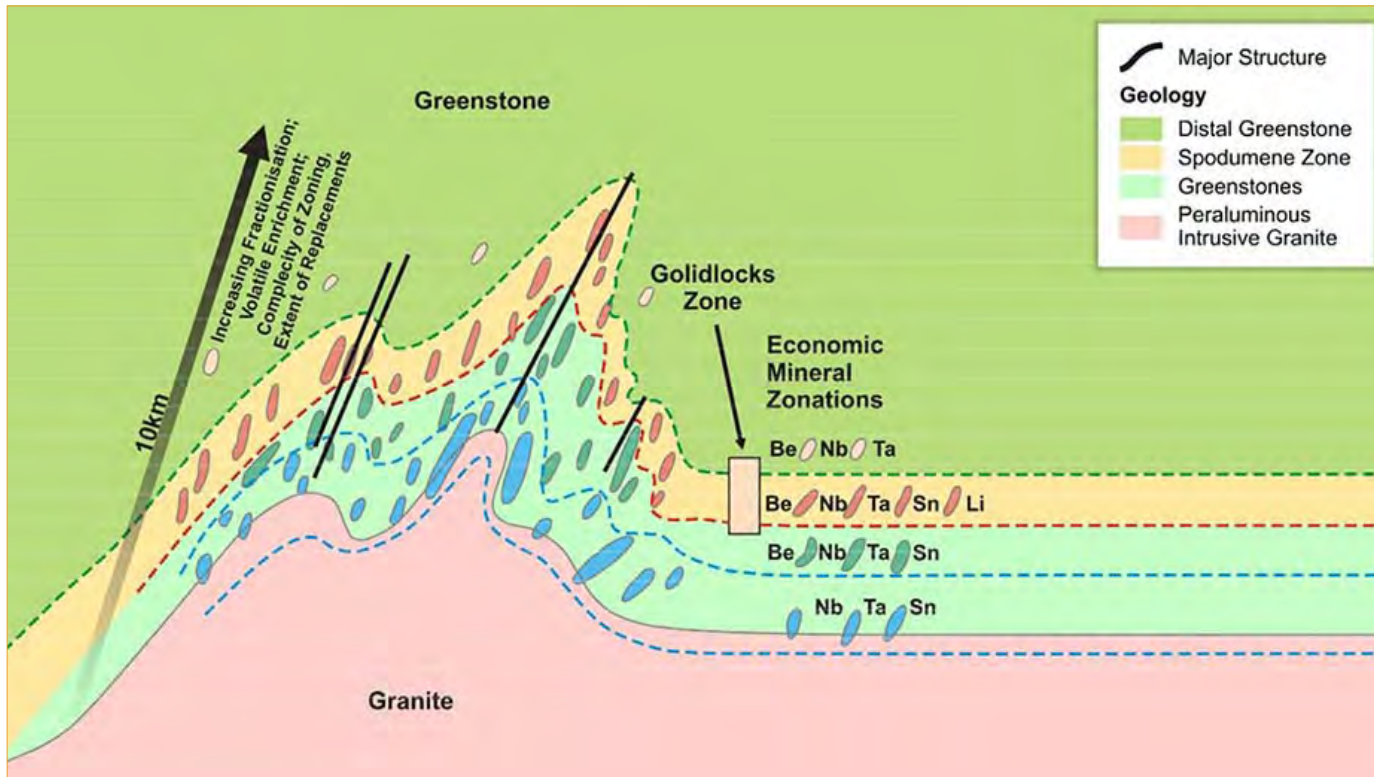


Flynn Gold

ASX: FG1

Appendix 1: Lithium Exploration Model

- “LCT”-pegmatites, are sourced from “fertile” parent granites and the physical distance from the parent granite may directly relate to the distribution of, or zonation of these elements
- The “ideal” distance from a granite/greenstone contact is “conventionally” thought to be between one to four kilometres - the “Goldilocks Zone”



Schematic LCT Pegmatite model technical illustration
Modified after Černý (1991) and Breaks et al. (2021)