



Asra Minerals Limited
ABN 72 002 261 565
104 Colin Street
West Perth WA 6005
Australia

Phone +61 8 9420 8208
info@asraminerals.com.au
ASX: ASR
asraminerals.com.au

ASX Announcement: 4 March 2024

OPTION LISTING

Asra Minerals Limited (ASX: ASR; “Asra” or “the Company”) is pleased to advise that the Options issued pursuant to the Prospectus dated 17 January 2024, the Placement Options and the Lead Manager Options are now quoted as **ASRO** effective from 1 March 2024. A total of 600,950,022 ASRO are on issue.

The ASRO Options are exercisable at \$0.018 expiring on 1 February 2026.

-Ends-

This announcement has been authorised for release by the Board.

INVESTORS:

Rob Longley
Managing Director
Asra Minerals Ltd
info@asraminerals.com.au

MEDIA:

Emily Evans
SPOKE
+61 401 337 959
emily@hellospoke.com.au

About Asra Minerals

Asra Minerals is a multi-commodity focused exploration company, targeting a growing gold, lithium and rare earth element (REE) portfolio in the premier Goldfields region of Western Australia.

The Company's flagship Mt Stirling Project is located 240km north of Kalgoorlie and hosts 10 gold prospects, and a gold JORC Mineral Resource. The project also shows significant potential for REE and critical minerals including Scandium.

Asra's Kookynie West Project, situated less than 50km south, is a largely underexplored site showing gold, lithium and REE potential.

Asra has two lithium-focused exploration projects in the southern Yilgarn area of WA at Lake Johnston and Lake Cowan, located in highly prospective ground between operating lithium mines at Earl Grey and Bald Hill.

Asra's footprint in the world-class Eastern Goldfields region currently stands at 1,134km².

The Company has joint ventures in the Kalgoorlie-Menzies region with Zuleika Gold (ASX: ZAG) and Loyal Lithium (ASX: LLI) focusing on gold exploration.

Asra also retains an equity holding in Loyal Lithium, a lithium exploration company targeting highly prospective areas in North America.

Led by a strong and experienced team, Asra Minerals is focused on developing these prospective projects, with a view to meet rising global demand for REE and critical minerals.

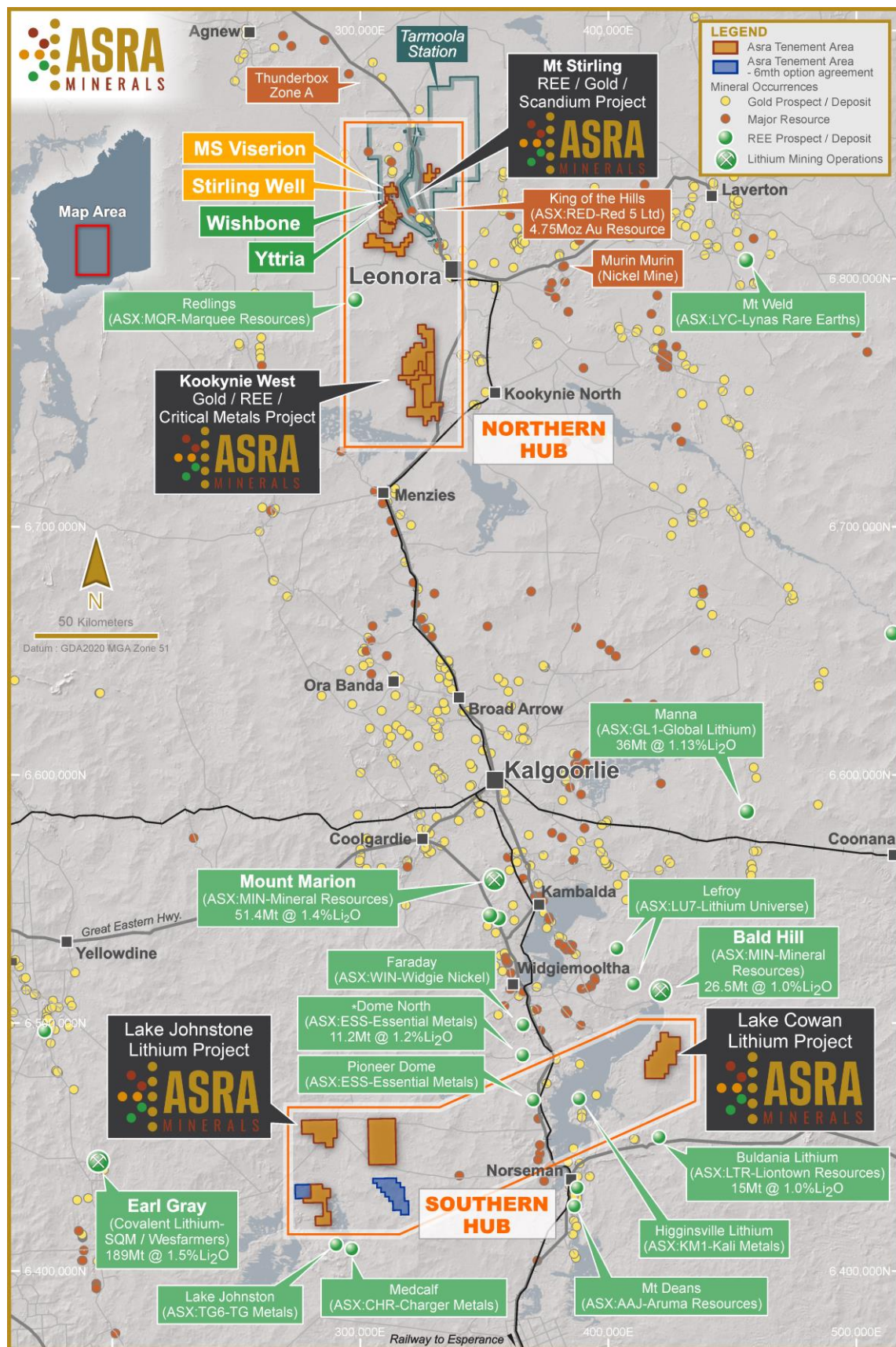


Figure 1. Location of Asra's Projects in its northern and southern Hubs in Western Australia.