

Energy and Battery Minerals Conference
Brisbane
14th March 2018

Legals

Disclaimer

This presentation may contain forward looking statements that are subject to risk factors associated with the gas and energy industry. It is believed that the expectations reflected in the statements contained within are reasonable, but they may be affected by a range of variables which could cause actual results or trends to differ materially, including but not limited to price and currency fluctuations, geotechnical factors, drilling and production results, development progress, operating results, reserve estimates, legislative, fiscal and regulatory developments, economic and financial markets conditions in various countries, approvals and cost estimates.

Competent Person Statement

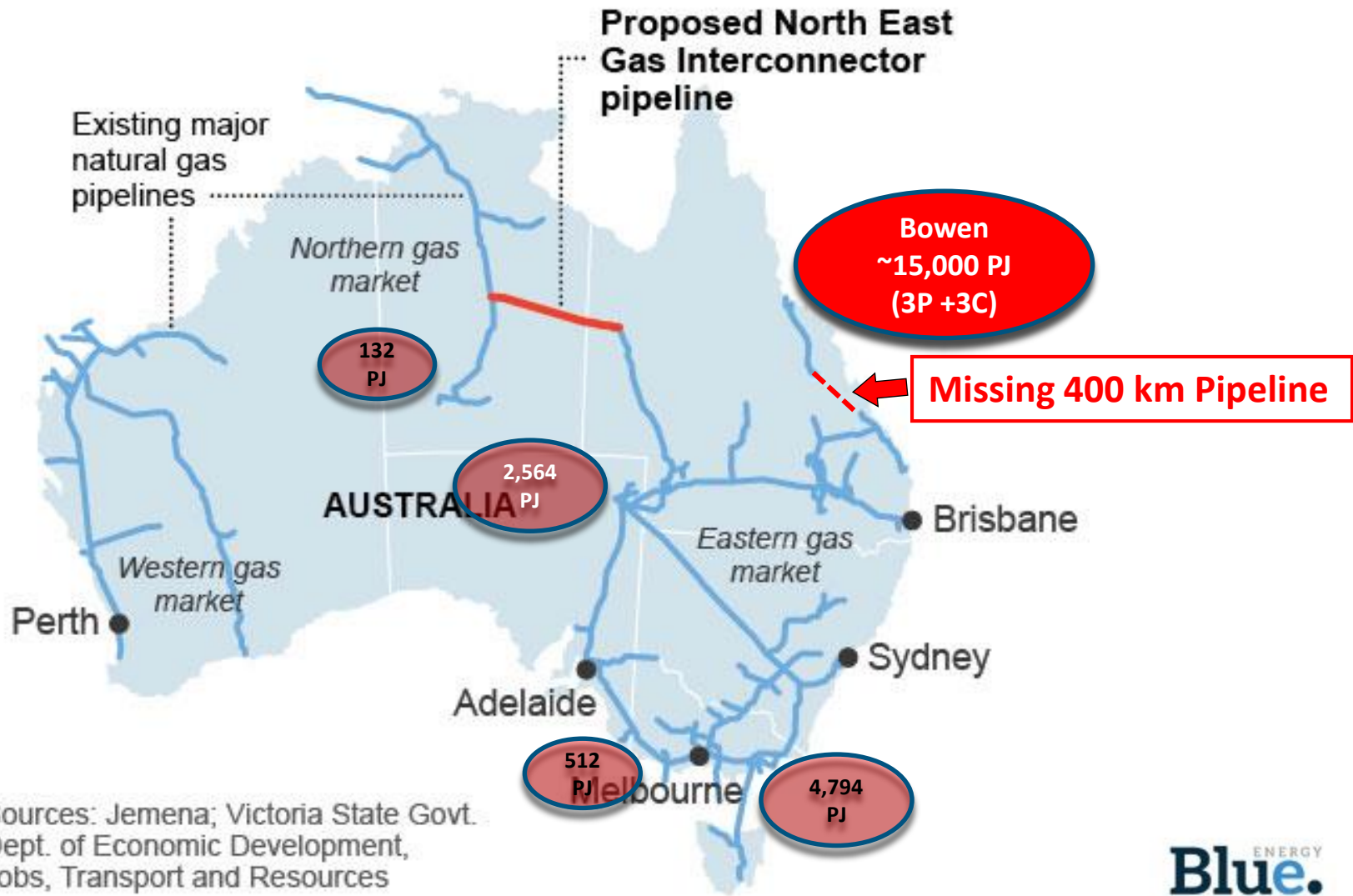
The estimates of Reserves and Contingent Resources have been provided by Mr John Hattner of Netherland, Sewell and Associates Inc. Mr Hattner is a full time employee of NSAI, has over 30 years of industry experience and 20 years' experience in reserve estimation, is a licensed geologist, and has consented to the use of the information presented herein. The estimates in the report by Mr Hattner have been prepared in accordance with the definitions and guidelines set forth in the 2007 Petroleum and Resource Management System (PRMS) approved by the Society of Petroleum Engineers (SPE), utilising a deterministic methodology.

Everyone now acknowledges we have a gas crisis

...and the solution is in our own back yard

The Bowen Basin Gas Province

The Bowen Basin has 15,000PJ of discovered gas resource

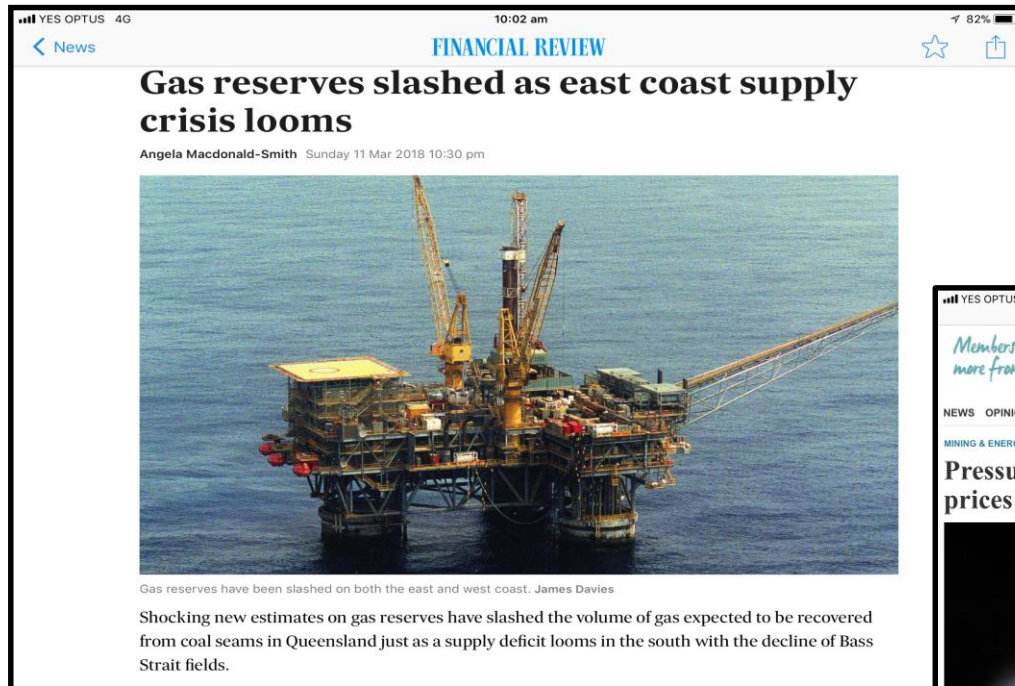


All that is needed is a 400 km pipeline

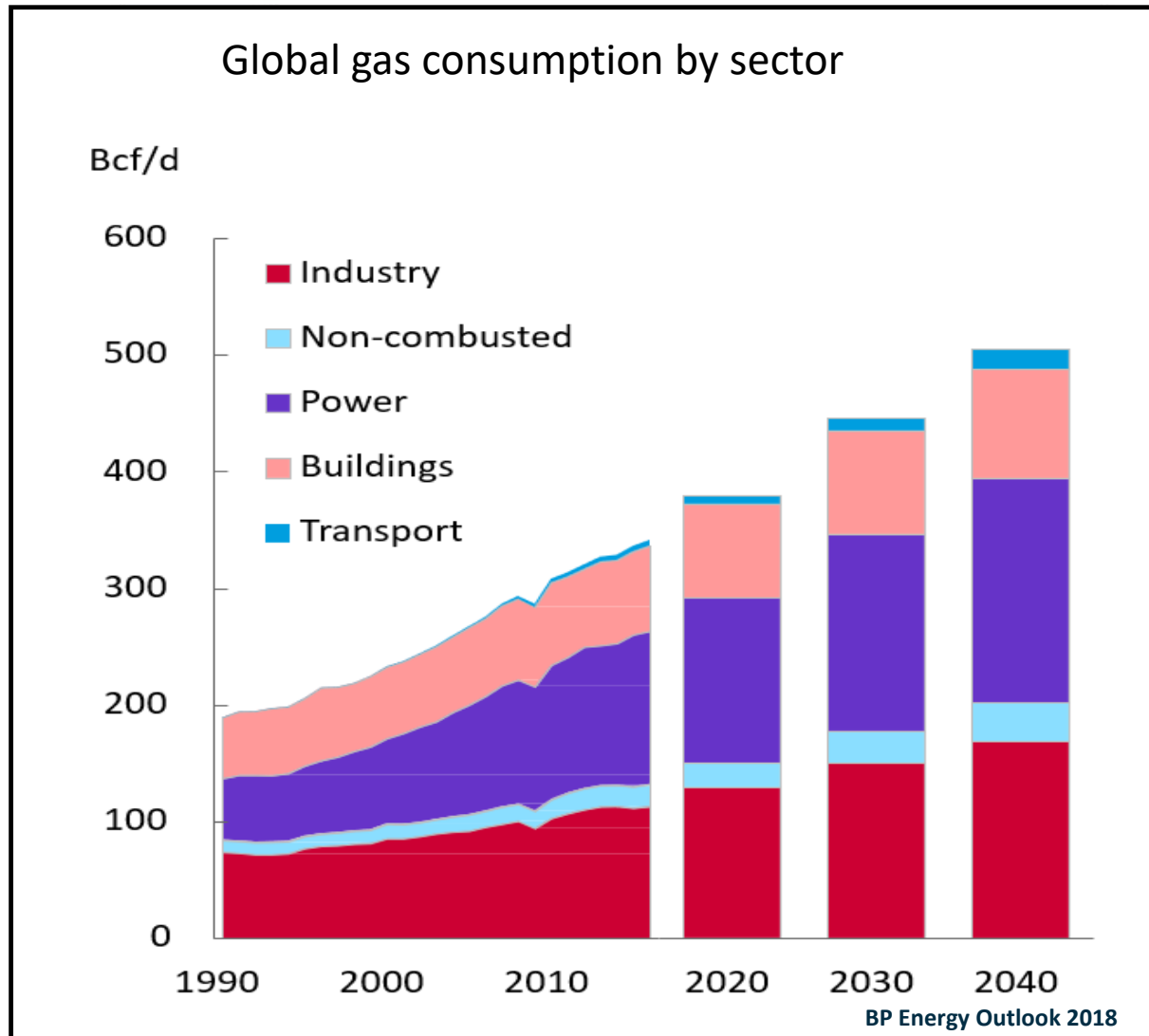
The Bowen Gas Province

- A huge Coal Seam Gas play with
 - High gas density Permian aged coals
 - Discovered reserves and resources – up to 15,000 PJ
- Netherland, Sewell and Associates oversee basin wide reserve and resource estimates – A top tier independent international certifier
- No recent reserves downgrades
- 15 years of gas production history – 40 Tj/day currently
- Potential to provide energy for Townsville, FNQ growth, LNG and the southern domestic market

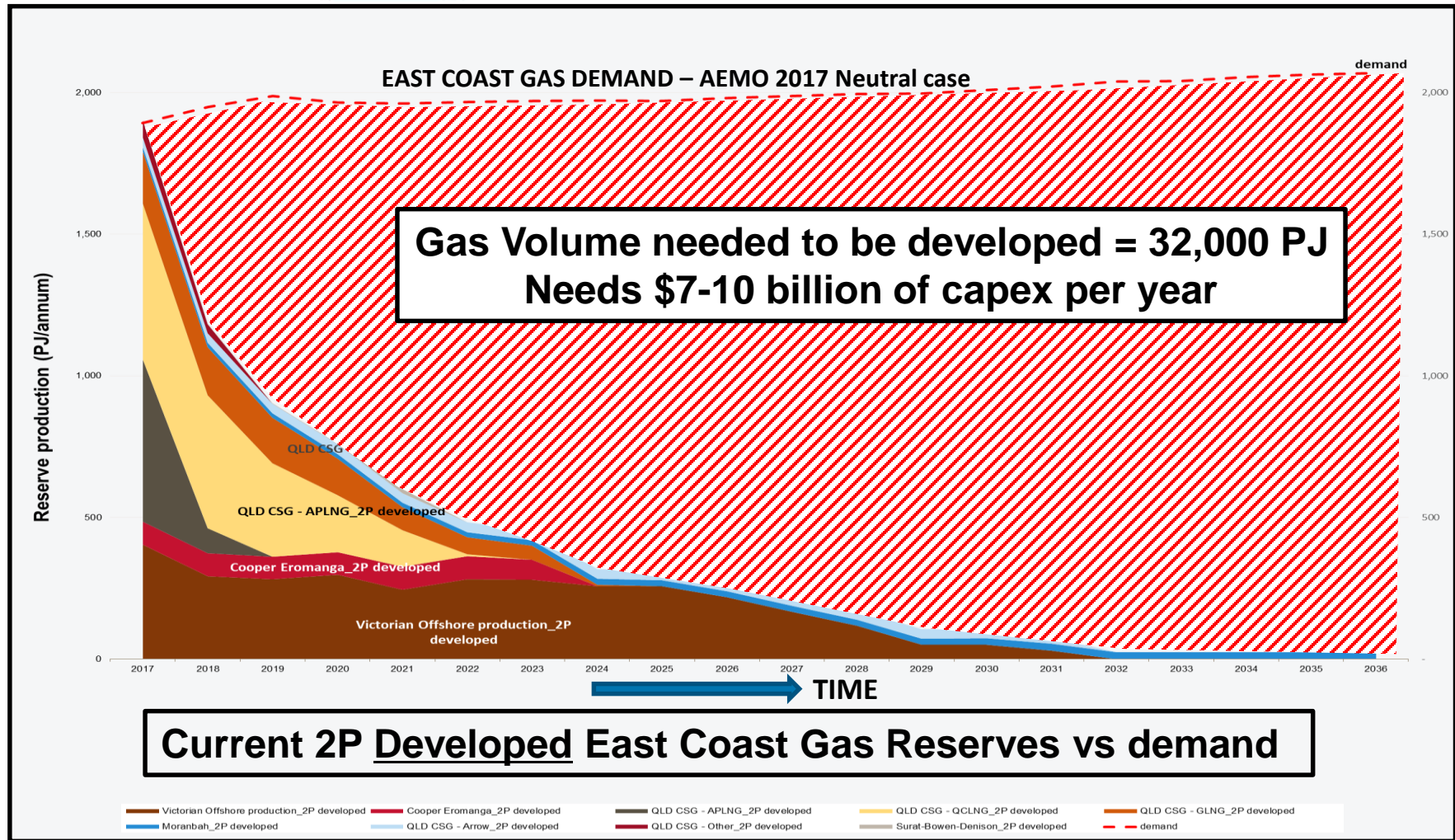
...but our gas supply crisis just got worse



while global and domestic gas demand grows

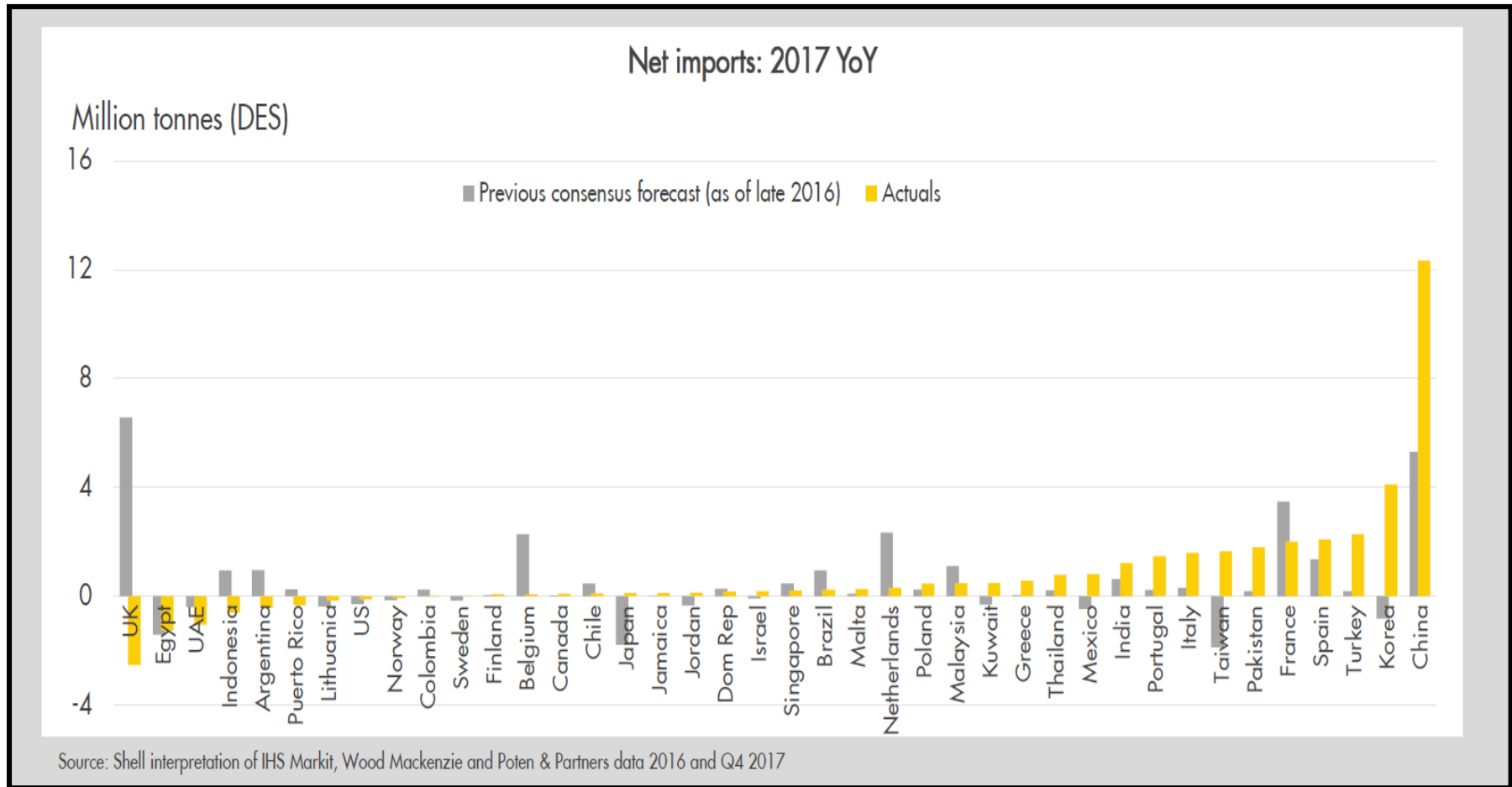


the gas reserve decline and underinvestment in drilling means we are only at the start of the gas crisis



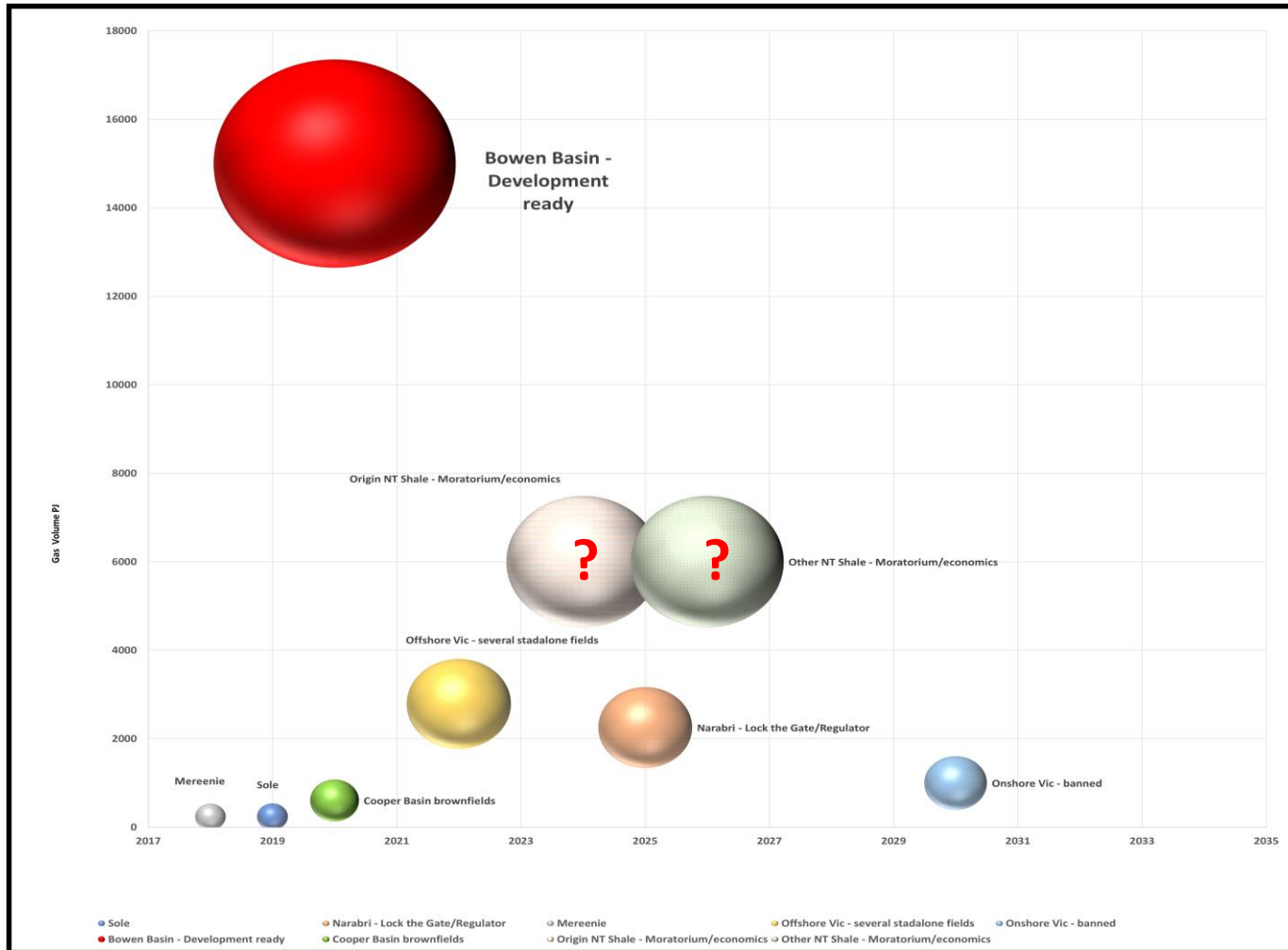
Modified after AEMO GSOO March 2017

Global LNG demand is risingand all the forecasts were wrong

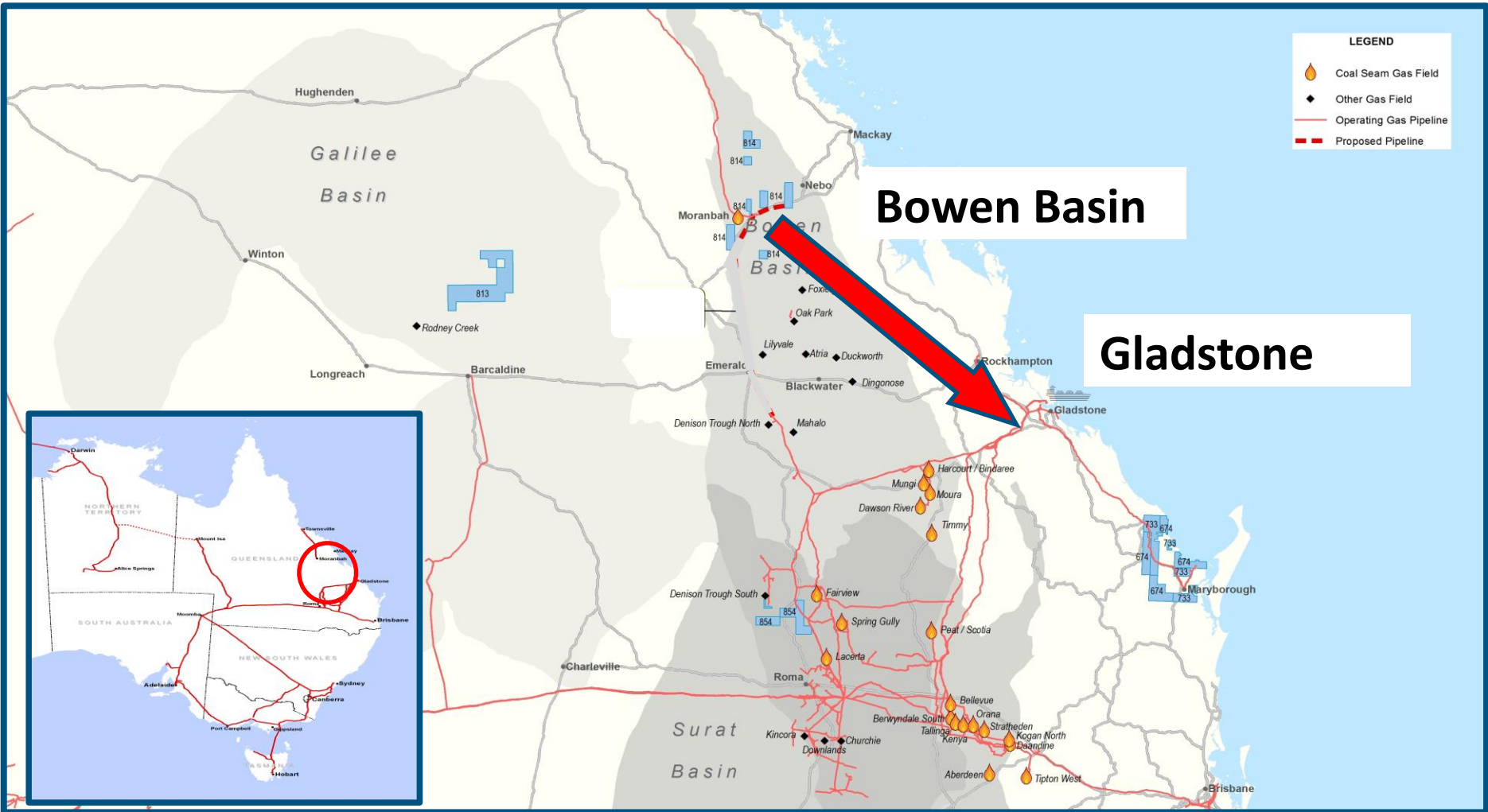


- China swamps everything
- Increasing number of countries importing LNG

Brownfield developments wont solve our long term east coast gas shortfall

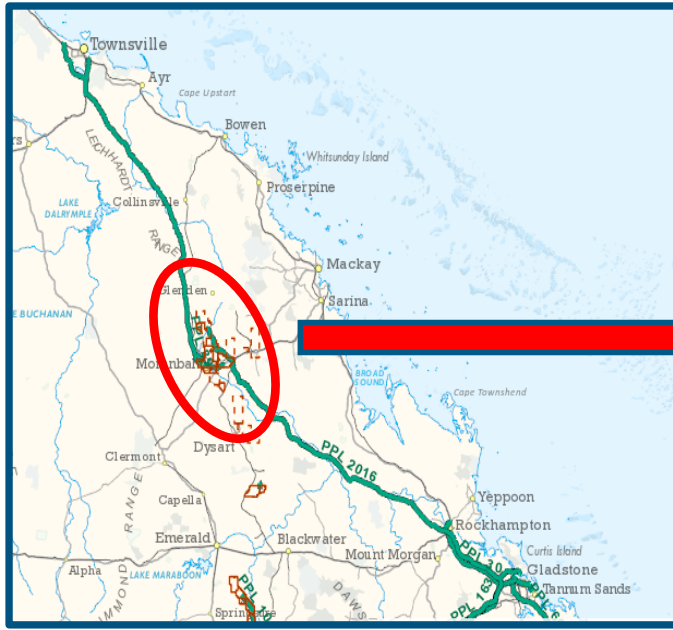


...but a 400km pipeline can link 15,000 PJ of gas resource to market



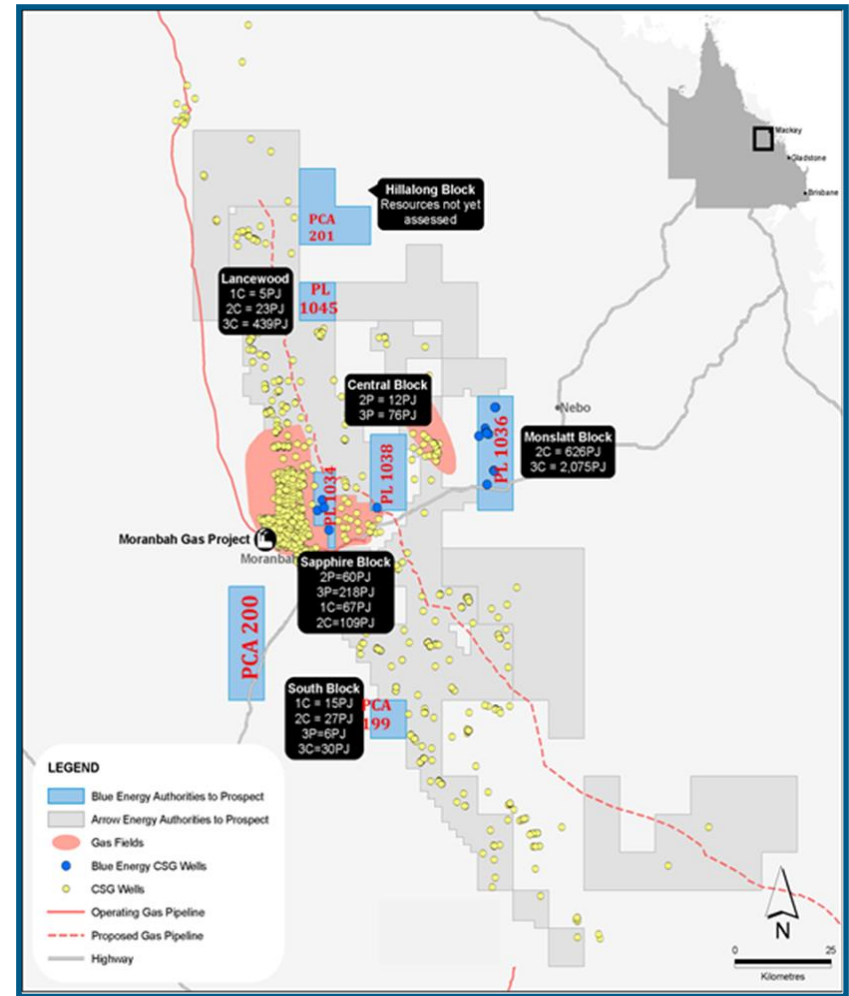
Blue Energy's Bowen acreage

A Key to long term East Coast gas security



Blue has

- **Gas Reserves of 298 PJ and**
- **Gas Resources of 3,000 PJ**
(Independently certified by NSAI)



Blue. ENERGY

More gas is needed

The Bowen Basin is a solution

- **More gas needed for**
 - **Domestic manufacturing, retail and power generation**
 - **LNG export**
 - **Renewable energy backup**

The Bowen Basin is a producing gas basin with discovered reserves

It just needs a 400 km pipeline!

ENERGY
Blue.

