

02 October 2024

**ASX Announcement**

# Co-funded drilling reveals REE mineralisation and extensive carbonatite related alteration zones.

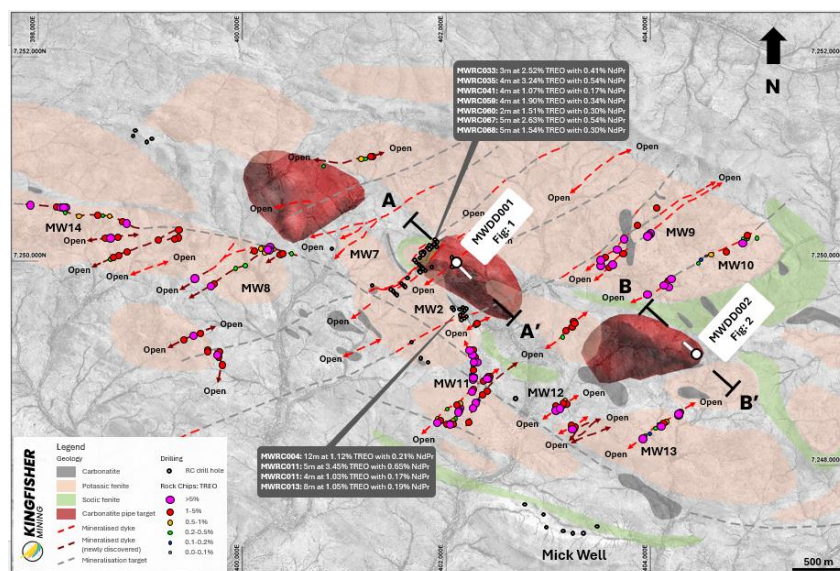
## Highlights

- Kingfisher has completed the Mick Well co-funded Government Exploration Incentive Scheme (EIS) drilling program.
- MWDD001 identified a new lode of REE mineralisation not previously identified at surface or in drilling.
- MWDD002 intersected more than 200m of broad intense potassic and epidote alteration zones known to occur proximal to carbonatite intrusion complexes.
- Drilling intersected a complex geological suite of disseminated copper sulphides, quartz veining and multiple pegmatites which will be assayed for base metals, gold and lithium.
- Drill holes will also undergo Hy-Logger hyperspectral scanning as part of the EIS program providing further important details to assist with the vectoring to the broader mineralisation.

Kingfisher Mining Limited (ASX:KFM) ("Kingfisher" or the "Company") is pleased to announce the completion of the successful co-funded diamond drilling program at Mick Well. Monazite REE mineralisation as well as broad zones of alteration suggest a larger system at depth than previously identified, in addition to disseminated copper sulphides, quartz veining and multiple pegmatites which will be assayed for base metals, gold and lithium

**Kingfisher's non-executive chairman Warren Hallam commented:**

"We are very pleased with the results of the recently completed co-funded drill program. MWDD001 intersected a new undiscovered REE lode approximately 250m from our previous drilling and represents the presence of blind targets. MWDD002 intersected greater than 200m of broad zones of epidote and potassic alteration which can be used a vector towards the carbonatite mineralisation. The abundance of pegmatites along with chalcopyrite and pyrite disseminated sulphides are encouraging and will be analysed for base metals, gold and lithium. Sulphides are known to be often associated with REE mineralisation. Kingfisher would also like to acknowledge the support that DEMIRS has provided through the EIS program."



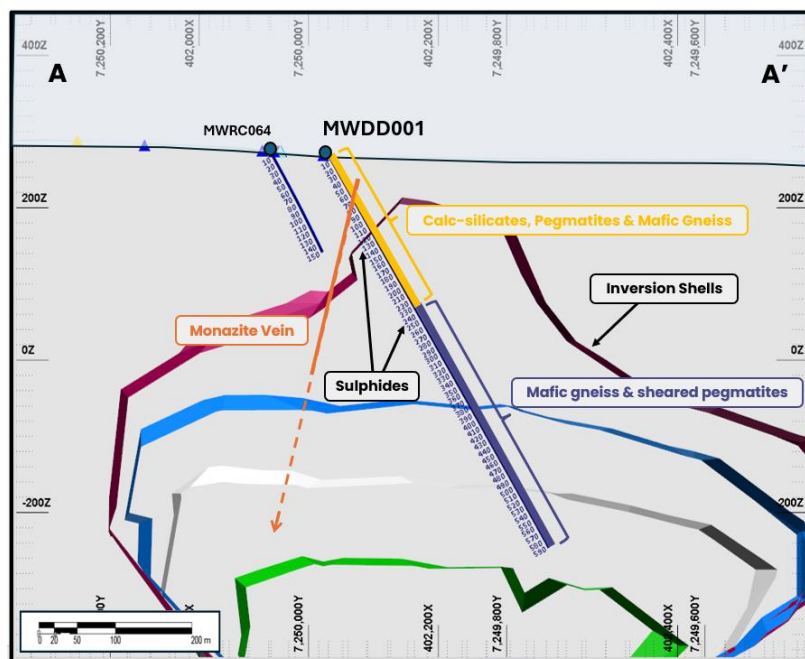
**Figure 1:** Co-funded diamond drill hole locations and Mick Well surface mineralisation. Drill results are shown in grey boxes (see ASX:KFM 7 February 2023, 5 July 2022 and 24 March 2022). Results are stated as Total Rare Earth Oxides (TREO%) and total  $\text{Nd}_2\text{O}_3 + \text{Pr}_6\text{O}_{11}$  (%) content.

## Government Co-funded drilling

The \$200,000 EIS co-funded diamond drilling program tested the geophysical pipe like REE targets at Mike Well. The modelled targets are directly linked to the vein and dyke REE mineralisation that surrounds and extends outward from the interpreted intrusion centres. The carbonatite pipe targets were identified through three-dimensional modelling of the Company's gravity and magnetic data. The modelled inversion shells highlight areas with denser and more magnetic rocks based on geophysical analysis (see ASX:KFM 29 April 2024). The co-funded drilling tested the central and eastern pipes, with additional drilling planned in other locations (Figure 1). The targets are considered to be the possible source of the vein and dyke REE mineralisation observed in drilling and on surface; 20km of REE mineralised dykes have been mapped to date (see ASX:KFM 20 December 2023). Mafic gneiss and granite country rocks have been identified as the likely source of the geophysical response.

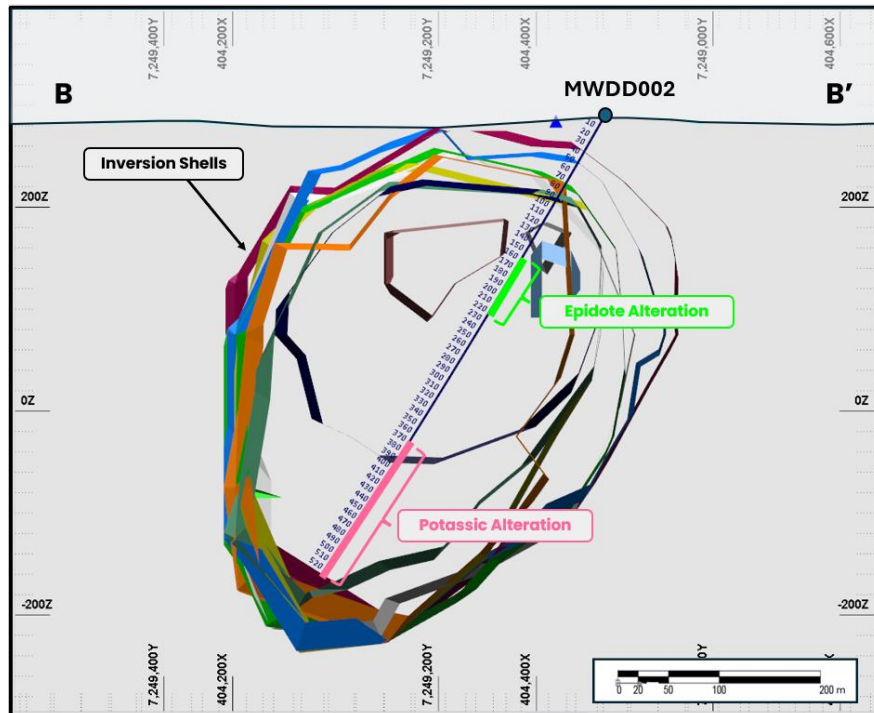
Diamond drill hole MWDD001 intersected a 0.8m structurally controlled monazite vein (74.1–74.9m), the mineralisation occurs as a newly discovered lode that does not outcrop at surface and occurs as parallel lode approximately 250m from previously drilled mineralisation (Figure 2 & 4). MWDD002 intersected 234m of potassic and epidote alteration (Figure 3). Potassic alteration indicates the presence of carbonatite and can be used as vector to larger REE mineralisation systems. Kingfisher's initial discovery MWRC004: 12m @ 1.12% the REE mineralisation occurred as allanite within an epidote halo (see ASX: KFM 10 January 2022). Drill hole locations, summary log and sulphide mineralisation information located in annexure 1 – 3.

Pegmatites and sulphide mineralisation occurred in both holes and will undergo assay for base metals, gold and lithium (Figure 5). Kingfisher is exploring the Palabora carbonatite model and analogies to the Mick Well carbonatite complex. A copper cap was observed in Kingfisher's MWRC004 discovery hole with assays returning 32m at 0.16% Cu from surface (see ASX: KFM 10 January 2022). The Phalaborwa Complex forms one of the world's largest copper mines plus a large suite of mined by-products including REE (Vielreicher et al 2000).



**Figure 2.** MWDD001 cross section facing Northeast, illustrating the newly discovered monazite vein/dyke mineralisation. The cross-section also illustrates the multiple stacked pegmatites that will be investigated for the presence of lithium as well as base metal bearing sulphides. The location of the cross section is shown in Figure 1. Previous drilling (see ASX:KFM 7 February 2023, 5 July 2022 and 24 March 2022)

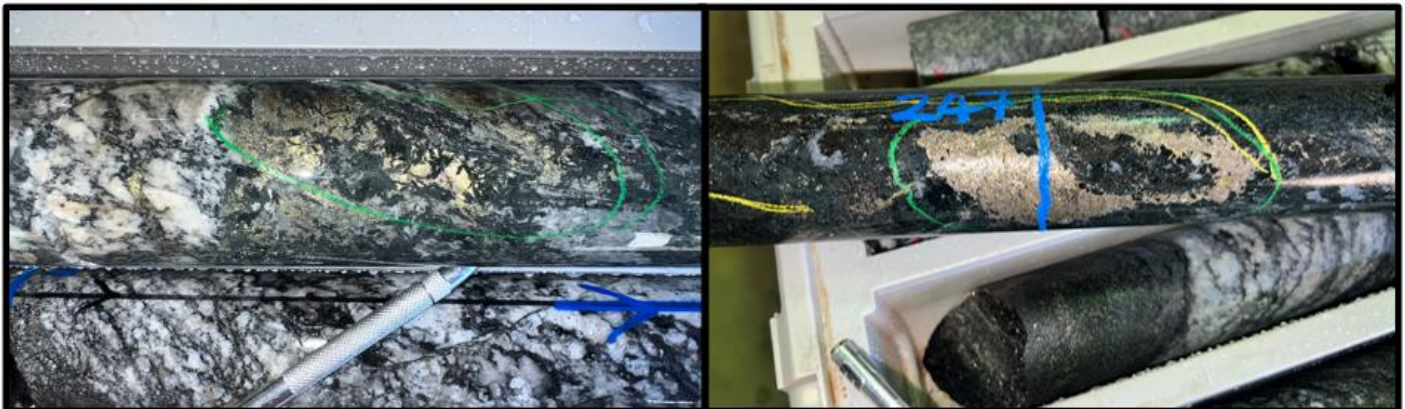




**Figure 3:** MWDD02 cross section facing Northeast illustrating the comprehensive potassic alteration that can be used to vector to REE mineralisation. Intense epidote alteration is consistent with previous REE mineralisation identified at Mick Well (see ASX:KFM 24 March 2022). Sulphides will also be investigated and assayed for gold mineralisation. The location of the cross section is shown in Figure 1.



**Figure 4:** MWDD01 structurally controlled monazite veining from 74.1 – 74.9m within intense potassic alteration halo. The mineralisation represents a new REE mineralisation lode not observed at surface.



**Figure 5:** MWDD01 sulphide mineralisation: Pyrite, pyrrhotite & chalcopyrite vein breccia 128.2–128.4m (left). Pyrite, pyrrhotite & chalcopyrite blebby sulphides 246.9–247.1 (right). NQ2 drill core, full sulphide details see annexure 3.

Visual estimates of mineral abundance should never be considered a proxy or substitute for laboratory analyses where concentrations or grades are the factor of principal economic interest. Visual estimates also potentially provide no information regarding impurities or deleterious physical properties relevant to valuations.

## About the Kingfisher's Gascoyne Projects

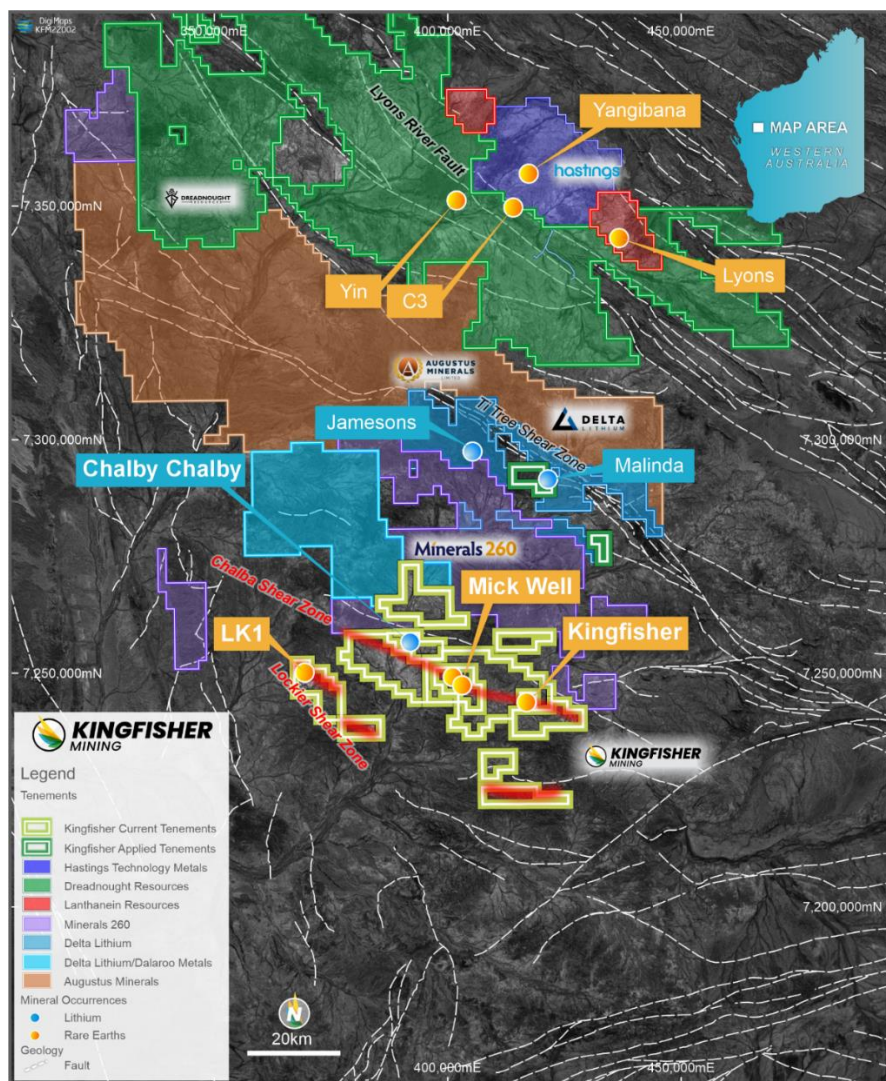
Kingfisher's Mick Well REE Project and Chalby Chalby Lithium Project are located in the Gascoyne region of Western Australia where the Company holds exploration licences covering 938km<sup>2</sup>. The tenure is prospective for carbonatite REE mineralisation similar to Hastings Technology Metals' world-class Yangibana Deposit which includes 29.93Mt at 0.93% TREO<sup>#</sup> as well as the recent Yin and C3 discoveries of Dreadnought Resources which include mineral resources of 40.82Mt at 1.03% TREO<sup>^</sup> (Figure 6). The Company's Gascoyne tenure is also prospective for lithium-bearing Thirty Three Suite Pegmatites which hosts Delta Lithium's Yinnetharra Project and has a Mineral Resource of 25.7 Mt at 1.0% Li<sub>2</sub>O<sup>\*</sup> from Delta's Malinda Prospect and rock chips results of 4.2% Li<sub>2</sub>O<sup>\*</sup> from Delta's Jamesons Prospect. The Kingfisher prospect has historically been explored for base metals with base metals mineralisation outcropping at surface.

Kingfisher has made discoveries of hard rock and clay rare earth elements mineralisation at Mick Well. Both styles of mineralisation are associated with carbonatites that intruded along a crustal-scale structural corridor, the Chalba Shear, which extends over a strike length of 54km within the Company's tenure. The Company has also identified a second structural corridor along the Lockier Shear which extends for 18km across the Company's Mooloo Project and 12km across the Arthur River Project.

Drilling at the MW2 Prospect has intersected six parallel ferrocarbonatite lodes and associated monazite mineralisation within a 300m wide zone and has returned high-grade REE results with 5m at 2.63% TREO with 0.54% Nd<sub>2</sub>O<sub>3</sub> + Pr<sub>6</sub>O<sub>11</sub>, 4m at 3.24% TREO with 0.54% Nd<sub>2</sub>O<sub>3</sub> + Pr<sub>6</sub>O<sub>11</sub>, 5m at 1.54% TREO with 0.30% Nd<sub>2</sub>O<sub>3</sub> + Pr<sub>6</sub>O<sub>11</sub>, 4m at 1.90% TREO with 0.34% Nd<sub>2</sub>O<sub>3</sub> + Pr<sub>6</sub>O<sub>11</sub> and 3m at 2.52% TREO with 0.41% Nd<sub>2</sub>O<sub>3</sub> + Pr<sub>6</sub>O<sub>11</sub>. The results from the ferrocarbonatite mineralisation is 500m northwest of Kingfisher's breakthrough REE discovery where maiden drilling returned 5m at 3.45% TREO with 0.65% Nd<sub>2</sub>O<sub>3</sub> + Pr<sub>6</sub>O<sub>11</sub> as well as 12m at 1.12% TREO with 0.21% Nd<sub>2</sub>O<sub>3</sub> + Pr<sub>6</sub>O<sub>11</sub> from a separate mineralised lode.

Kingfisher is also advancing its Chalby Chalby Lithium Project with mapping and sampling at Chalby Chalby delineating an area of 3.3km by 3km that includes multiple stacked pegmatites with a cumulative strike length of over 13km and with surface sample results up to 0.61% Li<sub>2</sub>O.





**Figure 6:** Location of the Mick Well and LK1 REE Projects and the Chalby Chalby Lithium Project in the Gascoyne Mineral Field. The location of the Yangibana REE Deposit, Yin REE and C3 Deposits which are located 100km north of Kingfisher's projects as well as the Malinda Lithium Deposit which is located 45km north of Kingfisher's projects are also shown.

This announcement has been authorised by the Board of Directors of the Company.

**Ends**

**For further information, please contact:**

### Kingfisher Mining Limited

Warren Hallam Non Executive Chairman Ph: +61 (08) 9481 0389

E: [info@kingfishermining.com.au](mailto:info@kingfishermining.com.au)

### About Kingfisher Mining Limited

Kingfisher Mining Limited (**ASX:KFM**) is a mineral exploration company committed to increasing value for shareholders through the acquisition, exploration and development of mineral resource projects throughout Western Australia. The Company's tenements cover 938km<sup>2</sup> in the underexplored Gascoyne Mineral Field.

The Company has made a number of breakthrough high grade rare earth elements discoveries in the Gascoyne region where it holds a target strike lengths of more than 54km along the Chalba mineralised corridor and more than 30km along the Lockier mineralised corridor.

To learn more please visit: [www.kingfishermining.com.au](http://www.kingfishermining.com.au)

### Previous ASX Announcements

**ASX:KFM:** Drilling Underway at Mick Well Carbonatite Pipe Targets 15 August 2024

**ASX:KFM:** Preparation for Drilling MW Carbonatites & Base Metal Review 3 July 2024

**ASX:KFM:** Government Co-funded Drilling Awarded for Mick Well Carbonatites 29 April 2023

**ASX:KFM:** Mick Well Exceeds 20km of REE Mineralisation 20 December 2023.

**ASX:KFM:** High Grade Discoveries Further Expand REE Carbonatites at Mick Well 23 November 2023.

**ASX:KFM:** Significant Additional Carbonatites and REE Mineralisation Identified at Mick Well 14 November 2023.

**ASX:KFM:** Broad Lithium Anomalies Identified from Chalby Chalby Soil Geochemistry Survey 26 October 2023.

**ASX:KFM:** Gravity Survey Confirms Carbonatite Pipe Targets at Mick Well 23 October 2023.

**ASX:KFM:** Further High Grade REE Mineralisation Discovered at Mick Well 3 October 2023.

**ASX:KFM:** Multiple Stacked Lithium-Bearing Pegmatites Mapped at Chalby Chalby 11 September 2023.

**ASX:KFM:** Lithium-Bearing Pegmatites Confirmed at Highly Prospective Gascoyne Tenure 7 August 2023.

**ASX:KFM:** Carbonatite Intrusions Confirmed at Large-Scale Chalba Targets 10 July 2023.

**ASX:KFM:** Significant Exploration Program Targets Large-Scale Carbonatites 4 April 2023.

**ASX:KFM:** High Grade Drilling Results Confirm New MW2 REE Discovery 7 February 2023.

**ASX:KFM:** MW2 and MW7 Continue to Expand on Latest Surface Sample Results 23 January 2023.

**ASX:KFM:** Assays from MW7 Confirm Another High Grade REE Discovery 29 November 2022.

**ASX:KFM:** New REE Discoveries along Kingfisher's 54km Target Corridor - MW7 and MW8 24 October 2022.

**ASX:KFM:** Further Exceptional REE Results Extends MW2 Strike Length to 3km 4 October 2022.

**ASX:KFM:** 40% REE Returned from Mick Well 30 August 2022.

**ASX:KFM:** Latest Drilling Returns High Grade REEs with 5m at 3.45% TREO, including 3m at 5.21% TREO 5 July 2022.

**ASX:KFM:** Surface Assays up to 21% TREO Define a Further 800m of Outcropping Mineralisation 20 June 2022.

**ASX:KFM:** High Grade Rare Earths Returned from Discovery Drill Hole: 4m at 1.84% TREO, including 1m at 3.87% TREO 24 March 2022.

**ASX:KFM:** Significant Rare Earths Discovery: 12m at 1.12% TREO 10 January 2022.

<sup>^</sup> ASX Announcement 'Large, High Confidence Yin Ironstone Resource - Mangaroon (100%)'. Dreadnought Resources Limited (ASX:DRE), 30 November 2023.

<sup>#</sup> ASX Announcement 'Drilling along 8km long Bald Hill - Fraser's trend Increases Indicated Mineral Resources by 50%'. Hastings Technology Metals Limited (ASX:HAS), 11 October 2022.

<sup>\*</sup> Yinnetharra Lithium Project Maiden Mineral Resource Estimate'. Delta Lithium Limited (ASX:DLI), 27 December 2023.

<sup>+</sup> ASX Announcement 'Yinnetharra Lithium Project Continues to Deliver'. Red Dirt Metals Limited (ASX:RDT), 14 April 2023.

Vielreicher, Noreen M., David I. Groves, and Richard M. Vielreicher. "The Phalaborwa (Palabora) deposit and its potential connection to iron-oxide copper-gold deposits of Olympic Dam type." *Hydrothermal Iron-Oxide Copper-Gold and Related Deposits. A Global Perspective*, ed. TM Porter, PGC Publishing, Adelaide, Australia 1 (2000): 321-329.

### Total Rare Earth Oxide Calculation

Total Rare Earths Oxides (TREO) is the sum of the oxides of the light rare earth elements lanthanum (La), cerium (Ce), praseodymium (Pr), neodymium (Nd), and samarium (Sm) and the heavy rare earth elements europium (Eu), gadolinium (Gd), terbium (Tb), dysprosium (Dy), holmium (Ho), erbium (Er), thulium (Tm), ytterbium (Yb), lutetium (Lu), and yttrium (Y).

### Forward-Looking Statements

This announcement may contain forward-looking statements which involve a number of risks and uncertainties. These forward-looking statements are expressed in good faith and believed to have a reasonable basis. These statements reflect current expectations, intentions or strategies regarding the future and assumptions based on currently available information. Should one or more of the risks or uncertainties materialise, or should underlying assumptions prove incorrect, actual results may vary from the expectations, intentions and strategies described in this announcement. No obligation is assumed to update forward looking statements if these beliefs, opinions, and estimates should change or to reflect other future developments.

### Competent Persons Statements

*The information in this report that relates to Exploration Results is based on information compiled by Mr Matthew Roach, a geologist and Exploration Manager employed by Kingfisher Mining Limited. Mr Roach is a Member of the Australian Institute of Geoscientists and has sufficient experience that is relevant to this style of mineralisation and type of deposit under consideration and to the activity that is being reported on to qualify as a Competent Person as defined in the 2012 edition of the "Australasian Code for Reporting of Exploration Results, Mineral Resources and Ore Reserves". Mr Roach consents to the inclusion in the report of the matters in the form and context in which it appears*

### Annexure 1: Drill Hole Information (MGA94\_z50)

Drillhole ID	Easting	Northing	RL	Dip	Azimuth	End of Hole (m)
MWDD001	402108	7249980	269	-60	135	591.4
MWDD002	404444	7249080	287	-60	315	526

### Annexure 2: Summary Log

Hole ID	Depth From	Depth To	Summary Geology
MWDD001	0	0.6	Soil
MWDD001	0.6	0.7	Quartz gravel
MWDD001	0.7	2.9	Saprolite (smectitic residual clay).
MWDD001	2.9	30.3	Green v.hard massive coarse/med grained; meta-dolerite/gabbro
MWDD001	30.3	30.6	Pegmatite
MWDD001	30.6	32.2	Schistose dolerite
MWDD001	32.2	33.9	Mixed massive to foliated med-fine grained dolerite with coarse grained pegmatite.
MWDD001	33.9	64.3	White to pink massive med/fine grained calcic Calc-Silicate.
MWDD001	64.3	71.65	biotite feldspar & feldspar biotite schist
MWDD001	71.65	74.1	Potassic altered schist

MWDD001	74.1	74.9	Struct controlled monazite vein
MWDD001	74.9	76.8	Potassic altered schist
MWDD001	76.8	79.3	Grey massive to foliated fine gr. granodiorite.
MWDD001	79.3	91	Grey foliated biotite dolerite & White Quartz-feldspar pegmatite
MWDD001	91	97.8	Quartz-feldspar pegmatite
MWDD001	97.8	141.2	Grey foliated biotite dolerite & White Quartz-feldspar pegmatite
MWDD001	141.2	142.8	Felsic intrusive
MWDD001	142.8	153.6	Mafic gneiss
MWDD001	153.6	164.2	Grey foliated biotite dolerite/Mafic gneiss & White Quartz-feldspar pegmatite
MWDD001	164.2	228.5	Mafic gneiss
MWDD001	228.5	230.1	Fenite
MWDD001	230.1	235.1	Calc silicate
MWDD001	235.1	243	Mafic gneiss & sheared pegmatite.
MWDD001	243	245.9	Grey foliated med. Grained granodiorite.
MWDD001	245.9	271.1	Mafic gneiss & sheared pegmatite.
MWDD001	271.1	278	Dolerite? with Epidote-Clinzoisite alteration.
MWDD001	278	393.3	Mafic gneiss & sheared pegmatite.
MWDD001	393.3	396.6	Calcic fenite mixed with Calc-Silicate.
MWDD001	396.6	413.9	Mafic gneiss & sheared pegmatite.
MWDD001	413.9	424.5	Calc silicate
MWDD001	424.5	433.8	Grey foliated Mafic gneiss & pegmatite
MWDD001	433.8	442.3	Str. Foliated Granitoid (monzonite).
MWDD001	442.3	448.9	Grey/Red silicious recrystallised siltstone.
MWDD001	448.9	455.2	Calc silicate
MWDD001	455.2	515.2	Grey foliated Mafic gneiss & pegmatite
MWDD001	515.2	517.2	Felsic intrusive. Str. Foliation with intrusive upper contact and faulted lower contact.
MWDD001	517.2	591.4	Grey foliated Mafic gneiss & pegmatite to EoH.
MWDD002	0	0.9	Lower saprolite
MWDD002	0.9	27.4	Wh/Blk, med.gr., laminated/banded biotite & feldspar gneiss.
MWDD002	27.4	33.1	Dk Gn, massive to foliated, meta-dolerite.
MWDD002	33.1	43.2	Banded, sheared and foliated, mixed biotite-dolerite and Quartz-feldspar pegmatite.
MWDD002	43.2	47.9	Dark Green, massive to foliated, meta-dolerite.
MWDD002	47.9	52.7	Mixed to banded, biotite-dominated, mafic gneiss and Quartz-feldspar pegmatite.
MWDD002	52.7	62.6	Dark Green, massive to foliated, meta-dolerite.
MWDD002	62.6	116.2	wh/pink, str.foliated meta granite (monzonite?). Quartz-feldspar-mica S-tectonite.
MWDD002	116.2	157.6	Mixed to banded, bt-dominated, partially mylonitic, mafic gneiss and Quartz-feldspr pegmatite.
MWDD002	157.6	160.2	Epidote-Clinzoisite alteration zone
MWDD002	160.2	163.9	Intense potassic alteration.
MWDD002	163.9	165.1	Epidote-Clinzoisite alteration zone
MWDD002	165.1	177.4	Banded, sheared and foliated, mixed biotite-dolerite and Quartz-feldspar pegmatite.
MWDD002	177.4	178.4	Fenite



MWDD002	178.4	182.6	Epidote–Clinoisite altered Fenite.
MWDD002	182.6	201.1	Mixed to banded, biotite-dominated, partially mylonitic, mafic gneiss.
MWDD002	201.1	222.1	Epidote–Clinoisite altered mafic to intermediate gneiss.
MWDD002	222.1	226.3	Potassic altered granitic textured intermediate gneiss?
MWDD002	226.3	268.1	Mixed to banded, biotite-dominated, mafic gneiss and Quartz–feldspar pegmatite.
MWDD002	268.1	278.2	Red, massive to foliated, cse.gr., granitoid (monzonite?) with potassic alteration
MWDD002	278.2	281.5	biotite-dominated, mafic gneiss with infrequent Quartz–feldspar pegmatite.
MWDD002	281.5	286.6	granitoid. red pink, potassic altered. str foliation
MWDD002	286.6	288	Epidote–Clinoisite altered mafic gneiss.
MWDD002	288	293.2	Mixed to banded, biotite-dominated, mafic gneiss and Quartz–feldspar pegmatite.
MWDD002	293.2	297.7	Epidote–Clinoisite altered mafic to intermediate gneiss.
MWDD002	297.7	312.4	fine grained, mafic gneiss
MWDD002	312.4	319.6	White, massive to deformed, Quartz–feldspar pegmatite with clots of mafic mineral (tm?).
MWDD002	319.6	336	Mixed to banded, biotite-dominated, mafic gneiss and Quartz–feldspar pegmatite.
MWDD002	336	345.1	Mafic gneiss with patchy Epidote–Clinoisite alteration.
MWDD002	345.1	354.9	White Pink, fractured and veined, med to coarse grained., granitoid (monzonite).
MWDD002	354.9	367.2	Mixed to banded, biotite-dominated, mafic gneiss.
MWDD002	367.2	395.1	Pink, massive and fractured to veined, coarse grained potassic altered granitoid.
MWDD002	395.1	422.1	White, massive and strongly fractured & veined granitoid (tonalite?).
MWDD002	422.1	489.1	Pink, massive and fractured to veined, coarse gr. potassic altered granitoid.
MWDD002	489.1	494.6	Intermediate gneiss. Quartz feldspar rich, with both feldspar & Quartz rich zones
MWDD002	494.6	497.6	Grey white, sheared granitoid with silica-biotite overprint (complex meta-intrusive).
MWDD002	497.6	516.9	Pink/Red, massive to foliated, Potassic altered granitoid (monzonite?).
MWDD002	516.9	523.1	Mixed to banded, biotite-dominated, mafic gneiss and Quartz–feldspar pegmatite.
MWDD002	523.1	526	Pink/Red, massive to foliated, Potassic altered granitoid (monzonite?).

### Annexure 3: Sulphide & REE Interval Logs

Hole ID	From	To	Interval (m)	Sulphide Type	Sulphide Mode	Sulphide % Visual Estimate
MWDD001	31.2	31.7	0.5	Pyrite	Vein hosted	0.5%
MWDD001	74.1	74.9	0.8	Monazite	Vein hosted	40.0%
MWDD001	83	83.4	0.4	Pyrite, Pyrrhotite	Vein hosted & disseminated	1.0%
MWDD001	84	84.4	0.4	Pyrite, Pyrrhotite, Chalcopyrite	Vein hosted & disseminated	3.0%
MWDD001	90.9	91	0.1	Pyrite, Pyrrhotite	Vein hosted	3.0%
MWDD001	92.5	92.6	0.1	Pyrite, Pyrrhotite	Vein hosted	2.0%
MWDD001	93	93.3	0.3	Pyrite, Pyrrhotite	Vein hosted	3.0%
MWDD001	97.8	97.9	0.1	Pyrite, Pyrrhotite	Vein hosted	2.0%
MWDD001	107.8	108.7	0.9	Pyrrhotite	Disseminated	3.0%
MWDD001	112.1	112.4	0.3	Pyrrhotite	Vein hosted	1.0%

MWDD001	119.2	119.3	0.1	Pyrrhotite	Vein hosted	2.0%
MWDD001	128.2	128.4	0.2	Pyrite, Pyrrhotite, Chalcopyrite	Vein hosted	10.0%
MWDD001	146.7	147	0.3	Pyrite, Pyrrhotite	Disseminated	1.0%
MWDD001	156	156.4	0.4	Pyrite, Pyrrhotite	Vein hosted	1.0%
MWDD001	173.4	173.9	0.5	Pyrite, Pyrrhotite	Disseminated	2.0%
MWDD001	175.1	175.6	0.5	Pyrite, Pyrrhotite	Disseminated	1.0%
MWDD001	176.3	176.6	0.3	Pyrite, Pyrrhotite	Disseminated	2.0%
MWDD001	177.1	177.8	0.7	Pyrite, Pyrrhotite	Disseminated	1.0%
MWDD001	179.2	183.1	3.9	Pyrite, Pyrrhotite	Disseminated	0.5%
MWDD001	208.7	208.8	0.1	Pyrite, Pyrrhotite	Blebbly	10.0%
MWDD001	209	210	1	Pyrite, Pyrrhotite	Disseminated	0.5%
MWDD001	218.2	218.4	0.2	Pyrite	Vein hosted	1.0%
MWDD001	246.8	246.9	0.1	Pyrite, Pyrrhotite	Vein hosted	4.0%
MWDD001	246.9	247.1	0.2	Pyrite, Pyrrhotite, Chalcopyrite	Blebbly	15.0%
MWDD001	247.1	248.4	1.3	Pyrite, Pyrrhotite	Vein-hosted	2.0%
MWDD001	252.9	254	1.1	Pyrite	Disseminated	1.0%
MWDD001	319.9	320.3	0.4	Pyrite, Pyrrhotite, Chalcopyrite	Vein-hosted	5.0%
MWDD001	321.5	321.7	0.2	Pyrite	Disseminated	2.0%
MWDD001	329	329.1	0.1	Pyrite, Pyrrhotite	Vein-hosted	2.0%
MWDD001	332.1	332.2	0.1	Pyrite	Disseminated	1.0%
MWDD001	433	433.8	0.8	Pyrite	Disseminated	1.0%
MWDD001	447	447.7	0.7	Pyrite	Disseminated	1.0%
MWDD001	496.3	496.6	0.3	Pyrite	Disseminated	1.0%
MWDD001	535.3	535.5	0.2	Pyrite	Disseminated	1.0%
MWDD001	579.8	580	0.2	Pyrite	Disseminated	1.0%
MWDD001	587.8	588	0.2	Pyrite	Vein hosted	1.0%
MWDD002	33.6	35.7	2.1	Pyrite	Disseminated	0.5%
MWDD002	38.8	38.9	0.1	Pyrite, Pyrrhotite	Vein hosted	1.0%
MWDD002	41.4	41.6	0.2	Pyrite, Pyrrhotite	Vein hosted	3.0%
MWDD002	47.7	50.4	2.7	Pyrite, Pyrrhotite	Vein hosted, Disseminated	0.5%
MWDD002	58.1	58.2	0.1	Pyrite	Disseminated	0.5%
MWDD002	61.7	62.3	0.6	Pyrite	Vein hosted	0.5%

MWDD002	65.3	65.5	0.2	Pyrite	Disseminated	2.0%
MWDD002	99.1	99.4	0.3	Pyrite, Pyrrhotite, Chalcopyrite	Disseminated	1.0%
MWDD002	105.2	105.3	0.1	Pyrite	Fracture fill	0.5%
MWDD002	112.4	112.8	0.4	Pyrite, Pyrrhotite	Disseminated	1.0%
MWDD002	136.7	136.8	0.1	Pyrite	Disseminated	1.0%
MWDD002	165.1	167.4	2.3	Pyrite, Pyrrhotite, Chalcopyrite	Blebbby	2.0%
MWDD002	169	169.2	0.2	Pyrite, Pyrrhotite, Chalcopyrite	Blebbby	2.0%
MWDD002	239.6	239.7	0.1	Pyrite	Vein hosted	2.0%
MWDD002	244.4	245.7	1.3	Pyrite, Pyrrhotite	Disseminated	2.0%
MWDD002	259.8	260.5	0.7	Pyrite	Disseminated	1.0%
MWDD002	261.1	261.2	0.1	Pyrite, Pyrrhotite, Chalcopyrite	Vein hosted	4.0%
MWDD002	280.4	280.6	0.2	Pyrite	Disseminated	0.5%
MWDD002	296.8	297.7	0.9	Pyrite, Pyrrhotite	Fracture fill	2.0%
MWDD002	304.2	304.3	0.1	Pyrite	Disseminated	0.5%
MWDD002	325	325.5	0.5	Pyrite	Disseminated	0.5%
MWDD002	332.4	334.5	2.1	Pyrite, Pyrrhotite	Disseminated	0.5%
MWDD002	336.1	336.2	0.1	Pyrite	Blebbby	0.5%
MWDD002	437.9	438.1	0.2	Pyrite	Vein hosted	1.0%



## Attachment 1: JORC Code, 2012 Edition – Table 1

### Section 1 Sampling Techniques and Data

Criteria	JORC Code explanation	Commentary
<b>Sampling techniques</b>	<ul style="list-style-type: none"> <li>Nature and quality of sampling (eg cut channels, random chips, or specific specialised industry standard measurement tools appropriate to the minerals under investigation, such as down hole gamma sondes, or handheld XRF instruments, etc). These examples should not be taken as limiting the broad meaning of sampling.</li> <li>Include reference to measures taken to ensure sample representivity and the appropriate calibration of any measurement tools or systems used.</li> <li>Aspects of the determination of mineralisation that are Material to the Public Report.</li> <li>In cases where 'industry standard' work has been done this would be relatively simple (eg 'reverse circulation drilling was used to obtain 1 m samples from which 3 kg was pulverised to produce a 30 g charge for fire assay'). In other cases more explanation may be required, such as where there is coarse gold that has inherent sampling problems. Unusual commodities or mineralisation types (eg submarine nodules) may warrant disclosure of detailed information.</li> </ul>	<ul style="list-style-type: none"> <li>The completed drilling program has used HQ3 triple tube (61mm diameter), HQ (63.5mm diameter) and NQ2 (48mm diameter) diamond coring for the collection of drill samples. The core samples will be sawn in half, with half of the core retained by the Company and the other half of the core submitted for analysis.</li> <li>Samples from the current program are currently being prepared for analysis and are yet to be analysed.</li> </ul>
<b>Drilling techniques</b>	<ul style="list-style-type: none"> <li>Drill type (eg core, reverse circulation, open-hole hammer, rotary air blast, auger, Bangka, sonic, etc) and details (eg core diameter, triple or standard tube, depth of diamond tails, face-sampling bit or other type, whether core is oriented and if so, by what method, etc).</li> </ul>	<ul style="list-style-type: none"> <li>Drilling was completed using a Sandvik DE820 Diamond Coring drill rig.</li> <li>The completed drilling program has used HQ3 triple tube (61mm diameter), HQ (63.5mm diameter) and NQ2 (48mm diameter) diamond coring for the collection of drill samples.</li> <li>Historical Kingfisher drilling was completed using the reverse circulation technique.</li> <li>The core was orientated using an Axis downhole orientation tool</li> </ul>
<b>Drill sample recovery</b>	<ul style="list-style-type: none"> <li>Method of recording and assessing core and chip sample recoveries and results assessed.</li> <li>Measures taken to maximise sample recovery and ensure representative nature of the samples.</li> <li>Whether a relationship exists between sample recovery and grade and whether sample bias may have occurred due to preferential loss/gain of fine/coarse material.</li> </ul>	<ul style="list-style-type: none"> <li>Drill sample recovery in the zone of mineralisation and alteration is close to 100%.</li> <li>Core recoveries are monitored, measured and recorded by Kingfisher's exploration team during and after drilling.</li> <li>Sample recoveries were consistently satisfactory and of a high standard throughout the 2024 diamond drill program.</li> </ul>
<b>Logging</b>	<ul style="list-style-type: none"> <li>Whether core and chip samples have been geologically and geotechnically logged to a level of detail to support appropriate Mineral Resource estimation, mining studies and metallurgical studies.</li> <li>Whether logging is qualitative or quantitative in nature. Core (or costean,</li> </ul>	<ul style="list-style-type: none"> <li>Drill holes are logged for geology, mineralisation and alteration. The logging from the current and historic programs is consistent with industry standards.</li> <li>Where orientation tools have failed structural interpretations have been</li> </ul>

Criteria	JORC Code explanation	Commentary
	<p>channel, etc) photography.</p> <ul style="list-style-type: none"> <li>The total length and percentage of the relevant intersections logged.</li> </ul>	<p>derived from nearby structures and mineralisation</p>
<b>Sub-sampling techniques and sample preparation</b>	<ul style="list-style-type: none"> <li>If core, whether cut or sawn and whether quarter, half or all core taken.</li> <li>If non-core, whether riffled, tube sampled, rotary split, etc and whether sampled wet or dry.</li> <li>For all sample types, the nature, quality and appropriateness of the sample preparation technique.</li> <li>Quality control procedures adopted for all sub-sampling stages to maximise representivity of samples.</li> <li>Measures taken to ensure that the sampling is representative of the in situ material collected, including for instance results for field duplicate/second-half sampling.</li> <li>Whether sample sizes are appropriate to the grain size of the material being sampled.</li> </ul>	<ul style="list-style-type: none"> <li>Samples from the current program are currently being prepared for analysis and are yet to be analysed. The core samples will be sawn in half, with half of the core retained by the Company and the other half of the core submitted for analysis.</li> <li>Previous RC drilling by Kingfisher, 1m samples were composited to 4m intervals on site by the Company's geologists. Several additional mineralised zones were identified from the 4m composite results and the 1m samples submitted for analysis.</li> </ul>
<b>Quality of assay data and laboratory tests</b>	<ul style="list-style-type: none"> <li>The nature, quality and appropriateness of the assaying and laboratory procedures used and whether the technique is considered partial or total.</li> <li>For geophysical tools, spectrometers, handheld XRF instruments, etc, the parameters used in determining the analysis including instrument make and model, reading times, calibrations factors applied and their derivation, etc.</li> <li>Nature of quality control procedures adopted (eg standards, blanks, duplicates, external laboratory checks) and whether acceptable levels of accuracy (ie lack of bias) and precision have been established.</li> </ul>	<ul style="list-style-type: none"> <li>Samples from the current program are yet to be analysed.</li> <li>Previous RC drilling by Kingfisher samples were analysed by Intertek Genalysis in Perth. The sample analysis uses a sodium peroxide fusion with an Inductively Coupled Plasma Mass Spectrometry and Inductively Coupled Plasma (ICP) Mass Spectrometry (MS) and Optical Emission Spectrometry (OES) finish.</li> </ul>
<b>Verification of sampling and assaying</b>	<ul style="list-style-type: none"> <li>The verification of significant intersections by either independent or alternative company personnel.</li> <li>The use of twinned holes.</li> <li>Documentation of primary data, data entry procedures, data verification, data storage (physical and electronic) protocols.</li> <li>Discuss any adjustment to assay data.</li> </ul>	<ul style="list-style-type: none"> <li>Analytical QC is monitored by the laboratory using standards and repeat assays.</li> <li>Independent field duplicates were not conducted for and were not considered necessary for this early stage of exploration.</li> </ul>
<b>Location of data points</b>	<ul style="list-style-type: none"> <li>Accuracy and quality of surveys used to locate drill holes (collar and down-hole surveys), trenches, mine workings and other locations used in Mineral Resource estimation.</li> <li>Specification of the grid system used.</li> <li>Quality and adequacy of topographic control.</li> </ul>	<ul style="list-style-type: none"> <li>Drill hole locations were surveyed using a handheld GPS using the UTM coordinate system, with an accuracy of +/-5m.</li> <li>Downhole surveys were completed using an Axis champ north-seeking gyroscopic survey tool and were reported in 10m intervals.</li> <li>All coordinates are MGA_z50</li> <li>Topographic control has been accurately defined using historic ground gravity survey points.</li> </ul>

Criteria	JORC Code explanation	Commentary
<b>Data spacing and distribution</b>	<ul style="list-style-type: none"> <li>Data spacing for reporting of Exploration Results.</li> <li>Whether the data spacing and distribution is sufficient to establish the degree of geological and grade continuity appropriate for the Mineral Resource and Ore Reserve estimation procedure(s) and classifications applied.</li> <li>Whether sample compositing has been applied.</li> </ul>	<ul style="list-style-type: none"> <li>MWDD001 was drilled 57m and 77m from historical drilling that did not extend beyond 150m (see ASX:KFM 7 February 2023).</li> <li>MWDD002 was drilled 1.8km from historical drilling that did not extend beyond 100m (see ASX:KFM 7 February 2023).</li> </ul>
<b>Orientation of data in relation to geological structure</b>	<ul style="list-style-type: none"> <li>Whether the orientation of sampling achieves unbiased sampling of possible structures and the extent to which this is known, considering the deposit type.</li> <li>If the relationship between the drilling orientation and the orientation of key mineralised structures is considered to have introduced a sampling bias, this should be assessed and reported if material.</li> </ul>	<ul style="list-style-type: none"> <li>The REE mineralisation has a NE strike and is steeply NW dipping.</li> <li>The true width of the mineralisation is likely to be approximately 2/3 of the drill interval widths.</li> </ul>
<b>Sample security</b>	<ul style="list-style-type: none"> <li>The measures taken to ensure sample security.</li> </ul>	<ul style="list-style-type: none"> <li>Samples will be given individual samples numbers for tracking.</li> <li>The sample chain of custody will be overseen by the Company's geologists.</li> </ul>
<b>Audits or reviews</b>	<ul style="list-style-type: none"> <li>The results of any audits or reviews of sampling techniques and data.</li> </ul>	<ul style="list-style-type: none"> <li>The sampling techniques and analytical data are monitored by the Company's geologists.</li> <li>External audits of the data have not been completed.</li> </ul>

## Section 2 Reporting of Exploration Results

Criteria	JORC Code explanation	Commentary
<b>Mineral tenement and land tenure status</b>	<ul style="list-style-type: none"> <li>Type, reference name/number, location and ownership including agreements or material issues with third parties such as joint ventures, partnerships, overriding royalties, native title interests, historical sites, wilderness or national park and environmental settings.</li> <li>The security of the tenure held at the time of reporting along with any known impediments to obtaining a licence to operate in the area.</li> </ul>	<ul style="list-style-type: none"> <li>The project area is located 80km northeast of the Gascoyne Junction and 230km east of Carnarvon.</li> <li>The project includes 12 granted Exploration Licences, E09/2242, E09/2349, E09/2320, E09/2481, E09/2494, E09/2495, E09/2653, E09/2654, E09/2655, E09/2523, E09/2660 and E09/2661.</li> <li>The tenements are held by Kingfisher Mining Ltd.</li> <li>The tenements lie within Native Title Determined Areas of the Wajarri Yamatji People and Gnulli People.</li> <li>All the tenements are in good standing with no known impediments.</li> </ul>
<b>Exploration done by other parties</b>	<ul style="list-style-type: none"> <li>Acknowledgment and appraisal of exploration by other parties.</li> </ul>	<ul style="list-style-type: none"> <li>Drilling was conducted by Mt Phillips Exploration (Wamex A75869) and WA Exploration Services (Wamex A58062) with collars coordinates converted from AMG to GDA94z50</li> <li>Exploration for base metals at Kingfisher undertaken was by Pasminco Ltd in 1994, Mt Phillips Exploration Pty Ltd in 2006 and WCP Resources in 2007.</li> </ul>



Criteria	JORC Code explanation	Commentary
		<ul style="list-style-type: none"> <li>Exploration for base metals at Mick Well was completed by Helix Resources Ltd in 1994, WA Exploration Services Pty Ltd in 1996, Mt Phillips Exploration Pty Ltd in 2006 and WCP Resources in 2007.</li> </ul>
<b>Geology</b>	<ul style="list-style-type: none"> <li><i>Deposit type, geological setting and style of mineralisation.</i></li> </ul>	<ul style="list-style-type: none"> <li>The Company's tenements in the Gascoyne Mineral Field are prospective for rare earth mineralisation associated with carbonatite intrusions &amp; associated fenite alteration and volcanogenic massive sulphide base metal mineralisation.</li> </ul>
<b>Drill hole Information</b>	<ul style="list-style-type: none"> <li><i>A summary of all information material to the understanding of the exploration results including a tabulation of the following information for all Material drill holes:</i> <ul style="list-style-type: none"> <li><i>easting and northing of the drill hole collar</i></li> <li><i>elevation or RL (Reduced Level – elevation above sea level in metres) of the drill hole collar</i></li> <li><i>dip and azimuth of the hole</i></li> <li><i>down hole length and interception depth</i></li> <li><i>hole length.</i></li> </ul> </li> <li><i>If the exclusion of this information is justified on the basis that the information is not Material and this exclusion does not detract from the understanding of the report, the Competent Person should clearly explain why this is the case.</i></li> </ul>	<ul style="list-style-type: none"> <li>Location, orientation and depth data as well as summary geological logs were tabulated and were included in this announcement for all new drill hole information received at the date of the report.</li> <li>No information has been excluded.</li> </ul>
<b>Data aggregation methods</b>	<ul style="list-style-type: none"> <li><i>In reporting Exploration Results, weighting averaging techniques, maximum and/or minimum grade truncations (eg cutting of high grades) and cut-off grades are usually Material and should be stated.</i></li> <li><i>Where aggregate intercepts incorporate short lengths of high grade results and longer lengths of low grade results, the procedure used for such aggregation should be stated and some typical examples of such aggregations should be shown in detail.</i></li> <li><i>The assumptions used for any reporting of metal equivalent values should be clearly stated.</i></li> </ul>	<ul style="list-style-type: none"> <li>The current diamond is currently being prepared for analysis. Samples have been marked at appropriate intervals.</li> </ul>
<b>Relationship between mineralisation widths and intercept lengths</b>	<ul style="list-style-type: none"> <li><i>These relationships are particularly important in the reporting of Exploration Results.</i></li> <li><i>If the geometry of the mineralisation with respect to the drill hole angle is known, its nature should be reported.</i></li> <li><i>If it is not known and only the down hole lengths are reported, there should be a clear statement to this effect (eg 'down hole length, true width not</i></li> </ul>	<ul style="list-style-type: none"> <li>The drill holes were designed to test geophysics targets and were drilled approximately perpendicular to strike.</li> <li>The REE mineralisation has a NE strike and is steeply NW dipping.</li> <li>The true width of the mineralisation is likely to be approximately 2/3 of the drill interval widths.</li> </ul>

Criteria	JORC Code explanation	Commentary
	known').	
<b>Diagrams</b>	<ul style="list-style-type: none"> <li>Appropriate maps and sections (with scales) and tabulations of intercepts should be included for any significant discovery being reported. These should include, but not be limited to a plan view of drill hole collar locations and appropriate sectional views.</li> </ul>	<ul style="list-style-type: none"> <li>A map and cross-sections showing relevant data has been included in the report along with documentation.</li> </ul>
<b>Balanced reporting</b>	<ul style="list-style-type: none"> <li>Where comprehensive reporting of all Exploration Results is not practicable, representative reporting of both low and high grades and/or widths should be practiced to avoid misleading reporting of Exploration Results.</li> </ul>	<ul style="list-style-type: none"> <li>All of drilling information is included in Annexure 1-3 and anomalous results are included in the diagrams in this report.</li> </ul>
<b>Other substantive exploration data</b>	<ul style="list-style-type: none"> <li>Other exploration data, if meaningful and material, should be reported including (but not limited to): geological observations; geophysical survey results; geochemical survey results; bulk samples – size and method of treatment; metallurgical test results; bulk density, groundwater, geotechnical and rock characteristics; potential deleterious or contaminating substances.</li> </ul>	<ul style="list-style-type: none"> <li>All of the relevant historical exploration data has been included in this report.</li> <li>All historical exploration information is available via WAMEX.</li> </ul>
<b>Further work</b>	<ul style="list-style-type: none"> <li>The nature and scale of planned further work (eg tests for lateral extensions or depth extensions or large-scale step-out drilling).</li> <li>Diagrams clearly highlighting the areas of possible extensions, including the main geological interpretations and future drilling areas, provided this information is not commercially sensitive.</li> </ul>	<ul style="list-style-type: none"> <li>On-going exploration in the area is a high priority for the Company.</li> <li>Exploration to include target-scale acquisition of geochemistry and geophysics data to define the extents of base metal and carbonatite REE mineralisation, additional RC and diamond drilling as well as mapping and rock chip sampling.</li> </ul>