

Virtual Site Tour

June 2020

ABN 98 117 085 748



DISCLAIMERS



Competent Persons Statement

The information in this presentation that relates to Exploration Results for Lake Way is extracted from the announcement entitled 'Paleochannel Bore Exhibits Strong Flow Rates and High Grades' dated 21 May 2020. This announcement is available to view on www.so4.com.au. The information in the original ASX Announcement that related to Exploration Results was based on, and fairly represents, information compiled by Mr Ben Jeuken, who is a member of the Australasian Institute of Mining and Metallurgy and a member of the International Association of Hydrogeologists. Mr Jeuken is employed by Groundwater Science Pty Ltd, an independent consulting company. Mr Jeuken has sufficient experience, which is relevant to the style of mineralisation and type of deposit under consideration and to the activity, which he is undertaking to qualify as a Competent Person as defined in the 2012 Edition of the 'Australasian Code for Reporting of Exploration Results, Mineral Resources and Ore Reserves'. Salt Lake Potash Limited confirms that it is not aware of any new information or data that materially affects the information included in the original market announcement. Salt Lake Potash Limited confirms that the form and context in which the Competent Person's findings are presented have not been materially modified from the original market announcement.

Forward Looking Statements

This presentation contains 'forward-looking information' that is based on the Company's expectations, estimates and projections as of the date on which the statements were made. This forward-looking information includes, among other things, statements with respect to pre-feasibility and definitive feasibility studies, the Company's business strategy, plans, development, objectives, performance, outlook, growth, cash flow, projections, targets and expectations, mineral reserves and resources, results of exploration and related expenses. Generally, this forward-looking information can be identified by the use of forward-looking terminology such as 'outlook', 'anticipate', 'project', 'target', 'potential', 'likely', 'believe', 'estimate', 'expect', 'intend', 'may', 'would', 'could', 'should', 'scheduled', 'will', 'plan', 'forecast', 'evolve' and similar expressions. Persons reading this news release are cautioned that such statements are only predictions, and that the Company's actual future results or performance may be materially different. Forward-looking information is subject to known and unknown risks, uncertainties and other factors that may cause the Company's actual results, level of activity, performance or achievements to be materially different from those expressed or implied by such forward-looking information. Forward-looking information is developed based on assumptions about such risks, uncertainties and other factors set out herein, including but not limited to the risk factors set out in Schedule 2 of the Company's Notice of General Meeting and Explanatory Memorandum dated 8 May 2015.

Disclaimer Notice

The material in this presentation ('material') is not and does not constitute an offer, invitation or recommendation to subscribe for, or purchase any security in Salt Lake Potash Ltd ('SO4') nor does it form the basis of any contract or commitment. SO4 makes no representation or warranty, express or implied, as to the accuracy, reliability or completeness of this material. SO4, its directors, employees, agents and consultants shall have no liability, including liability to any person by reason of negligence or negligent misstatement, for any statements, opinions, information or matters, express or implied, arising out of, contained in or derived from, or for any omissions from this material except liability under statute that cannot be excluded.

Statements contained in this material, particularly those regarding possible or assumed future performance, costs, dividends, production levels or rates, prices, resources, reserves or potential growth of SO4, industry growth or other trend projections are, or may be, forward looking statements. Such statements relate to future events and expectations and, as such, involve known and unknown risks and uncertainties. Actual results and developments may differ materially from those expressed or implied by these forward-looking statements depending on a variety of factors.

Authorisation Statement

This presentation has been approved and authorised for release by the Company's Managing Director, Mr Tony Swiericzuk.

ON-LAKE OPERATIONS

Precipitating harvest salts

Commercial scale operation with 400Ha ponds and 48km brine trenches operating for extended period

Stage 1 ponds producing plant feed harvest salts

Stage 2 ponds commenced precipitating harvest salts

On-track to commence Stage 3 construction in Q3 2020



North Trench Network – Sump



Trench Network – Brine Sampling



Pumping brine at sump intersection



Stage 1 Ponds



Stage 1 Ponds



Stage 1 Halite Ponds filling with Trench Brine



Stage 2 Halite Ponds filling with Trench Brine



Stage 2 Ponds – Harvest Cells

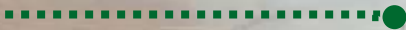




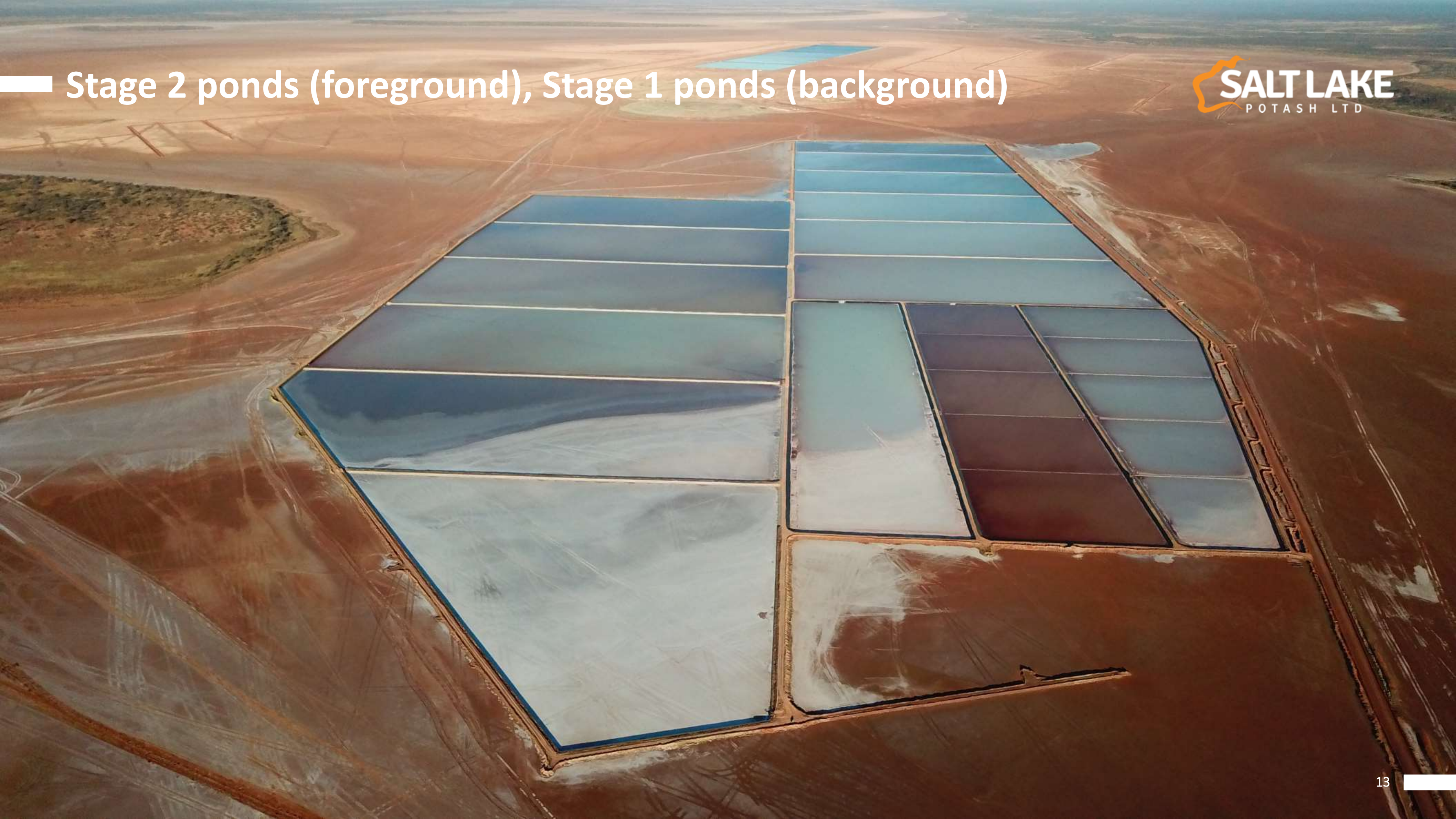
Stage 2 Ponds – Halite Cells



NOTE VEHICLE FOR
SIZE REFERENCE



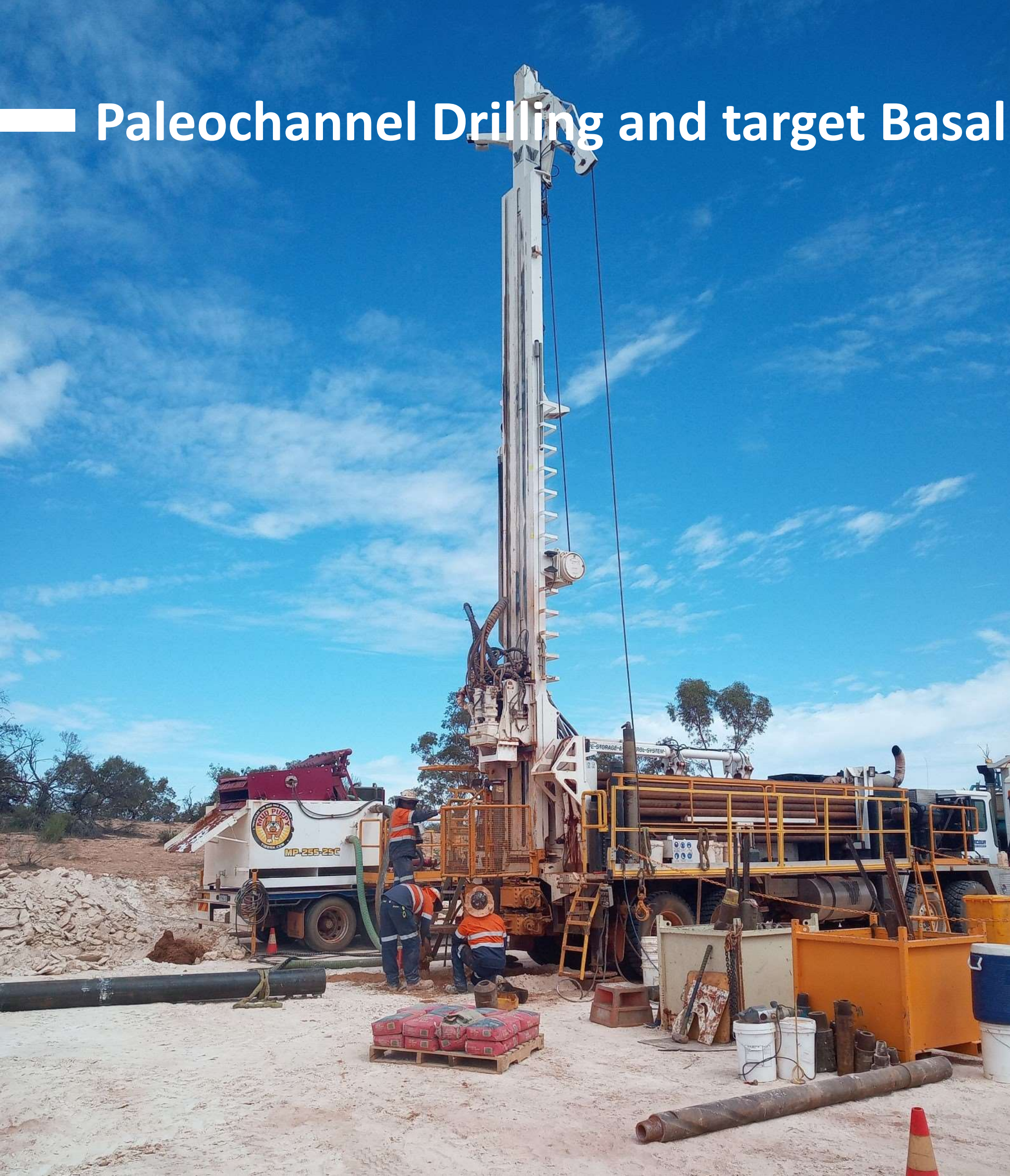
■ Stage 2 ponds (foreground), Stage 1 ponds (background)



— Bespoke low ground pressure on-lake vehicle – “Shrek”



■ Paleochannel Drilling and target Basal Sands



Brine transport system being “rolled out”



■ Precipitated Harvest Salts



— Precipitated Halite Salts



Stage 1 Ponds Harvest Salts sent for Laboratory Analysis



OFF-LAKE OPERATIONS

Plant/NPI construction progressing

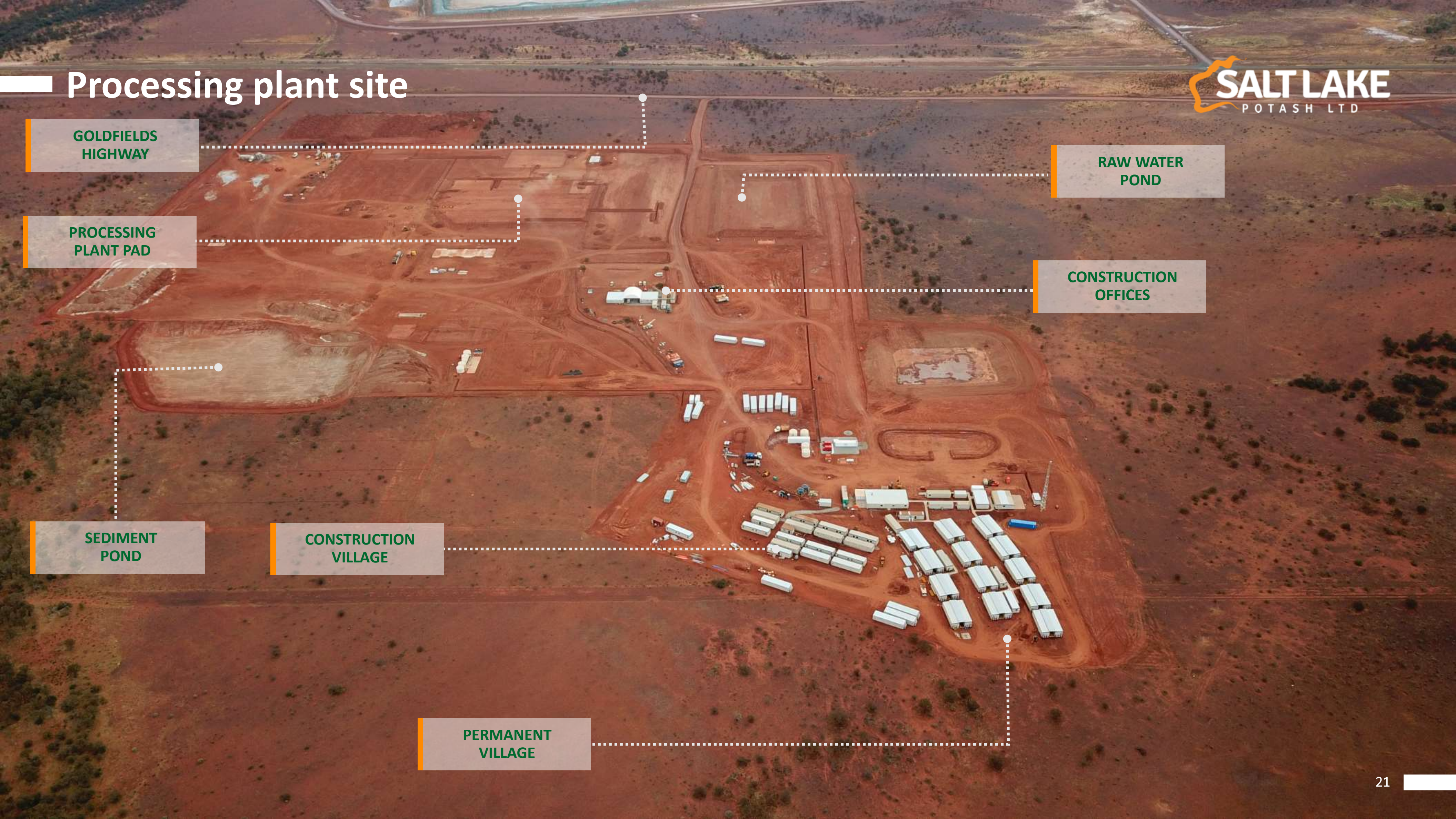
Process Plant bulk civil earthworks complete

Procurement of major items 77%

Final engineering and design 85% complete

100 room permanent village completed and occupied
& 160 temporary rooms completed





Processing plant site

GOLDFIELDS
HIGHWAY

PROCESSING
PLANT PAD

RAW WATER
POND

CONSTRUCTION
OFFICES

SEDIMENT
POND

CONSTRUCTION
VILLAGE

PERMANENT
VILLAGE



Lake Way Village



■ Laying concrete foundations at Process Plant site



OFF-LAKE OPERATIONS

Paleo bore construction well progressed

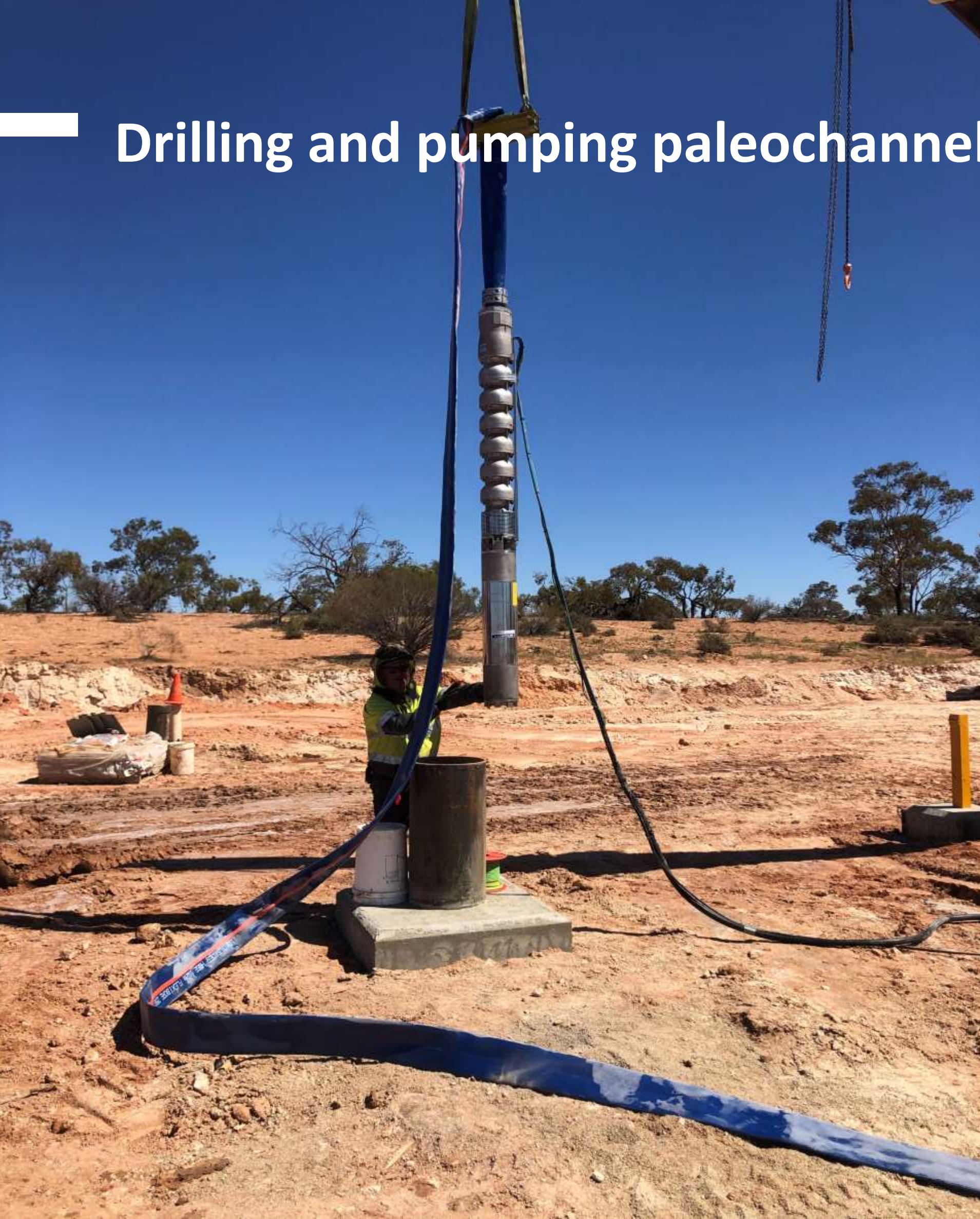
Four bores drilled, one test pumped

Flowrates and grades from initial hole above average used in BFS Life of Mine model

Brine movement from large overhead paleo clay layer into basal sands observed during testing



Drilling and pumping paleochannel bores



COVID-19 MITIGATION & SUPPORT

No material impact on schedule

No delays expected for delivery of items ordered for process plant and non-process infrastructure

No material impact on schedule expected with plant EPCM contractor GRES based in Perth

SO4 supporting local community



Covid-19 lock down – Community support





ASX:SO4 | AIM:SO4

GROW WITH US



ENQUIRIES
Tony Swiericzuk | Richard Knights

Ground Floor, 239 Adelaide Terrace, Perth WA 6000, Australia
Tel. +61 8 6559 5800 | Email: info@so4.com.au | so4.com.au | ABN 98 117 085 748