

ASX ANNOUNCEMENT 5<sup>TH</sup> JUNE 2025

**ASX:VTX**

# REWARD GOLD MINE PROJECT UPDATE

*Moving to high grade gold production*

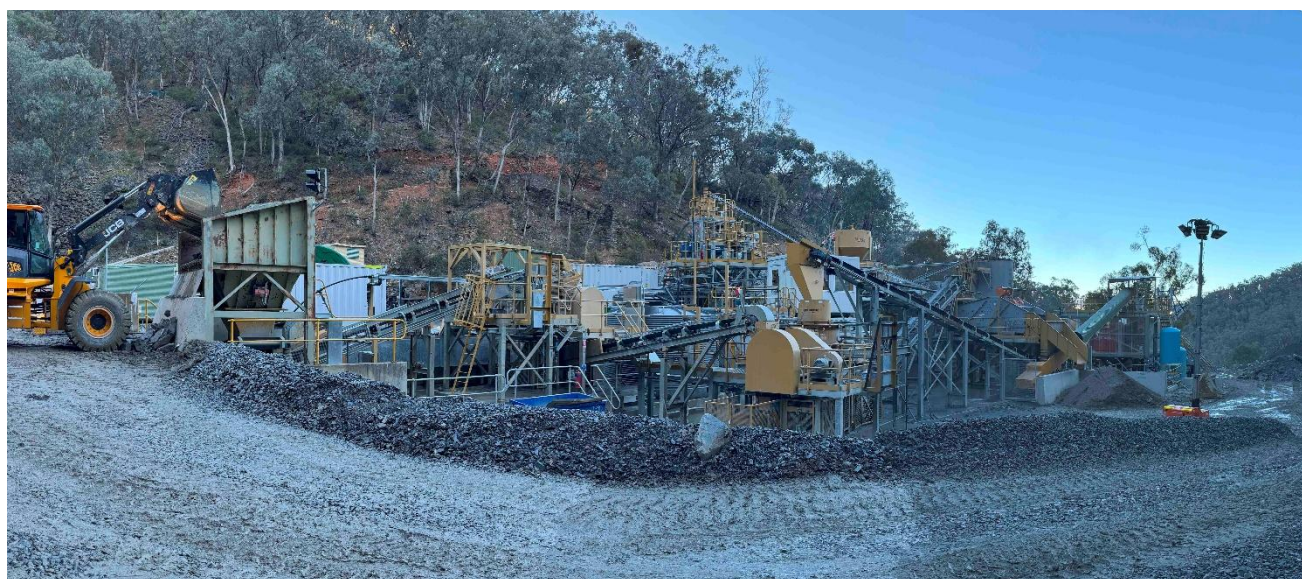
## HIGHLIGHTS:

- VTX remains on track to deliver first underground high grade gold ore to the Gravity Gold plant in early Q3 2025, with commissioning and underground mine readiness ramp- up activities progressing as planned.
- **Underground Gold Mining Readiness**
  - First underground miners onboarded under owner operator model
  - TD1 Jumbo (for development and production) commissioned and operating underground
  - Primary ventilation installed
  - First stope development dewatering completed
  - Explosive Magazine constructed
  - Water feed installed
  - Air lines installed and operational
  - 11kva power installation underway
- **Revised mine plan and schedule received and being implemented**
- **Underground Ore trialed through gravity plant**
  - Trail of 90 tonnes of development material with some reef quartz through the gravity plant
  - Throughput exceeding expectation and beyond the nameplate plant flow sheet value.
- **Pulse Mining System Installed and Implemented**
- **INX Software Installed and Implemented**
  - INX Software and site access kiosks to go live at mine site in June.
  - INX will improve overall safety framework with real time risk mitigation focus.
  - INX strengthens site access controls for employees, contractors and visitors.
- **Sand Stack facility fully operational**
  - Facility fully functioning with return water pump station installed and operational (water recycling)
  - 57 Megalitre Turon River water licence purchased for back up water supply
- **Environmental & Compliance Implementation**
  - Multiple monitoring systems installed, and real time monitored (Dust, noise, vibration).
- **Underground diamond drilling site (“drill cuddy”) being established**
  - This location will be used for Reward Gold Mine resource development as well as mine corridor exploration diamond drilling

Vertex Minerals Limited (ASX:VTX, **Company**) is pleased to announce that the underground mining operation is on track to be producing high grade gold feed to the recently commissioned gravity gold plant early this quarter.

Vertex's Technical Director and Geologist, Tully Richards commented: *"It is very exciting to be involved in the opening of the next chapter of what is a legendary gold field. I'm particularly pleased to see the enthusiasm of all those involved in wanting to make this chapter a success"*

### Figures and notes regarding the underground Reward Gold Mine and Gravity Gold Plant updates



**Figure 1. 90 tonnes of hard rock underground ore being trialled**



**Figure 2. Loader transferring 90 tonnes to the Gravity Gold Plant for trial processing**

A batch of hard rock material, taken from the Reward Gold Mine - Amalgamated Vein, was trial processed through the Gravity Gold Plant and TOMRA sorter. Vertex engineers and operators were extremely pleased with the throughput rate and its sorting amenability.

As previously announced the new mine schedule for the Reward underground mine proposes mining two stope blocks consisting of 2,075 tonnes at 17.8 g/t Au and 700 tonnes at **42.5 g/t Au**. The planned stope width is the same as the interpretation of the mineralisation. (Refer to Table 1 in Appendices 1) (VTX ASX announcement 26/06/23).

This stope can be exploited as soon as services have been established. Vertex mining crews are actively developing the adit to make room for the 11kva cable, water and air lines ("services").



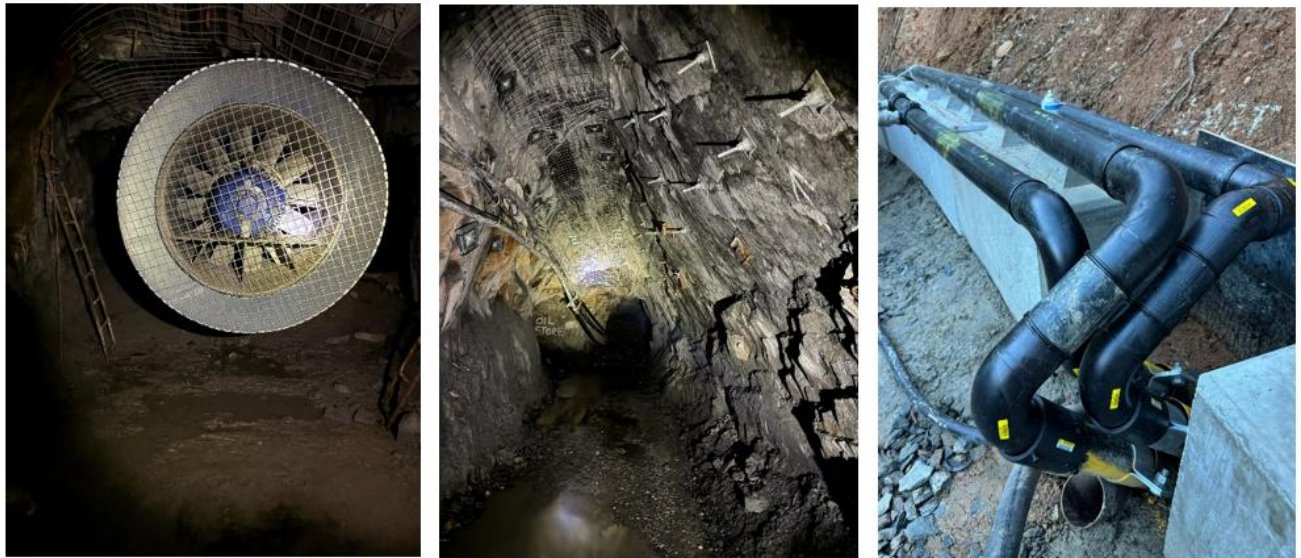
**Figure 3. The Ore Sorter performed as expected with the trial hard rock ore**





**Figure 4. Vertex Mining crew lifting the height of the backs (roof) to enable 11kva cable and other service piping to be hung safely away from the mobile mining equipment.**





**Figure 5. Services are being installed over the next few weeks to enable the commencement of stope mining at Reward. Left. Primary ventilation fan installed. Mid Amalgamated Adit lifting backs over a 100m length to safely hang 11kva cable above the moving mining equipment. Right. Water piping from surface to the Reward underground, providing input water and pumped excess output water reticulation.**

#### **Drill Cuddy (location for underground diamond drill rig)**

A drill cuddy is being developed by Vertex airleg miners and will be completed mid-June. The drill cuddy will be mined up to 6m in height and 7m depth to cater for the Vertex LM90 drill rig. The rig will drill circa 7 holes in this location designed by the Vertex geologists, targeting the stacked veins below and above the Amalgamated adit. The LM 90 will be operated by Vertex drillers and will drill continuously going forward. The aim is to build gold inventory, convert inferred resource to indicated and to help with stope design.



**Figure 6 LM 90 Drill Rig to commence upon service installation completion in the Reward Gold Mine**

**Vertex INX Safety software system implementation.**

Vertex have implemented INX Software into their management system. The suite software is designed to meet the risk, compliance, logistics, training and reporting needs of our mining business.

The roles it will take in the Vertex Reward Gold Mine business is.

- ✓ Record incident, injury and audit events
- ✓ Assign and track corrective actions
- ✓ Injury management and return to work plans
- ✓ Advanced risk register
- ✓ Conduct and register safety audits
- ✓ Reporting and graphing Vertex safety data
- ✓ Automatic notifications
- ✓ Take paper out of the safety management system
- ✓ Apply real time to safety systems
- ✓ Provide Vertex personnel with safety interaction via their mobile device

**Vertex Pulse Mining system implementation**

- ✓ Pulse Mining Systems implementation project has progressed from Discovery and Planning phases to System Configuration.
- ✓ Pulse will provide multiple benefits to the business including:
  - improving financial analysis and reporting;
  - improved maintenance planning;
  - improvements to site supply chain including inventory controls; and
  - greater automation increasing workforce efficiency and reduced admin time.

## Reward Mine Reticulated water system



**Figure 7 Sand Stack return water pump**



**Figure 8 Clear fresh decanted water ready to be pumped back from the sand stack to the Reward Gravity Gold processing plant.**

Vertex have now fully installed and implemented a closed water system at the Reward Gold Mine. The water from the gravity process plant mixed with the waste sand material is decanted at the sand stack area. The decanted water is then pumped back to the process plant for re-use. Make-up water is sourced from the Reward Gold Mine where mine water is used to meet the water requirements for the gravity plant. Water use is minimised in the process because the ore is mostly processed by ore sorting which doesn't use water. Further the water is not polluted because the Reward Ore and country rock has no sulphide minerals and the plant process does not use chemicals (Cyanide or reagents).





[Blast Monitor] Dynamate Semi-Portable Blast Monitoring station - A semi-portable automated blast monitoring system which measures ground vibration and overpressure to ranges of up to 170 mm/s @ 0.01 mm/s resolution and 65-135 dBL (Peak) @ 0.1 dB resolution, respectively. These monitors allow us to log and understand the effects of our blasting program. This information is important to understand as we have guidelines for these effects within our Environmental Protection Licence (EPL).

[Noise Monitor] 01DB CUBE 4G Smart Noise Monitor - Semi-portable noise monitoring station, allows us to measure ambient noise levels and ensure our operations are not causing excess noise pollution. Again, noise level restrictions are outlined within our EPL. Real-time data is streamed to a cloud database where we can view and generate reports.

[Dust Monitor] ES-405 Simultaneous Particulate Profiler - Semi-portable air quality sensor which provides accurate real-time measurements of PM10, PM4, PM2.5, and PM1 particulate concentrations simultaneously. This monitor allows for real-time monitoring of any particulate matter that may leave site or be present in the surrounding area.

**This announcement has been approved by the Vertex Board of Directors**

**Further Information:**

**Roger Jackson, Executive Chairman**  
[roger@vertexminerals.com.au](mailto:roger@vertexminerals.com.au)

**Tully Richards, Technical Director**  
[tully@vertexminerals.com.au](mailto:tully@vertexminerals.com.au)



**Follow Vertex Minerals on LinkedIn**