

26 NOVEMBER 2024

**ERRAWARRA**  
RESOURCES

# RAW MATERIALS FOR GREEN ENERGY

AGM PRESENTATION

**Li**  
LITHIUM

**REE**  
RARE EARTH  
ELEMENTS

**C**  
GRAPHITE

**Ni**  
NICKEL

**Cu**  
COPPER

**Au**  
GOLD

**ASX: ERW**

## Forward-Looking Statements

Statements in this announcement which are not statements of historical facts, including but not limited to those relating to the proposed transaction, are forward-looking statements. These statements instead represent management's current expectations, estimates and projections regarding future events. Although management believes the expectations reflected in such forward-looking statements are reasonable, forward-looking statements are based on the opinions, assumptions and estimates of management at the date the statements are made and are subject to a variety of risks and uncertainties and other factors that could cause actual events or results to differ materially from those projected in the forward-looking statements.

Accordingly, investors are cautioned not to place undue reliance on such statements.

Exploration results and resources referred to in this presentation have previously been reported to the ASX on 29 July 2022, 20 September 2022, 13 October 2022, 16 November 2022, 15 December 2022, 8 February 2023, 2 March 2023, 12 April 2023, 4 May 2023, 15 June 2023, 29 June 2023, 3 August 2023, 24 August 2023, 12 October 2023, 9 November 2023, 6 December 2023, 22 December 2023, 21 February 2024, 29 April 2024, 13 May 2024, 27 August 2024 and 16 October 2024.

## Competent Person Statement

The information in this report that relates to Exploration Targets, Exploration Results, Mineral Resources or Ore Reserves is based on information compiled by Mr Thomas Reddicliffe a Competent Person who is a Fellow of the Australasian Institute of Mining and Metallurgy. Mr Reddicliffe is an Executive Director of Errawarra Resources Ltd.

Mr Reddicliffe has sufficient experience that is relevant to the style of mineralisation and type of deposits under consideration and to the activity being undertaken to qualify as a Competent Person as defined in the 2012 Edition of the 'Australasian Code for Reporting of Exploration Results, Mineral Resources and Ore Reserves', and a Specialist under the 2015 Edition of the 'Australasian Code for Public Reporting of technical assessments and valuations of mineral assets'.

Mr Reddicliffe consents to the inclusion in the report of the matters based on his information and in the form and context in which it appears.



# CORPORATE OVERVIEW

UPDATED AS AT 22 NOVEMBER 2024

MARKET CAP

\$7.0m

22 November 2024

CASH AT BANK

~\$1.13m

September 2024

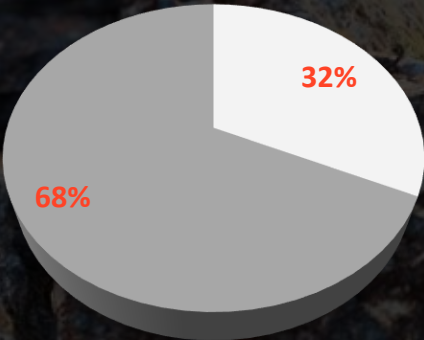
SHARES ON ISSUE

95.9m

OPTIONS

20.6m\*

## SHAREHOLDERS



- Management, Advisers, HNWs
- Other

## SHARE PRICE CHART for 12 MONTHS TO 22/11/2024



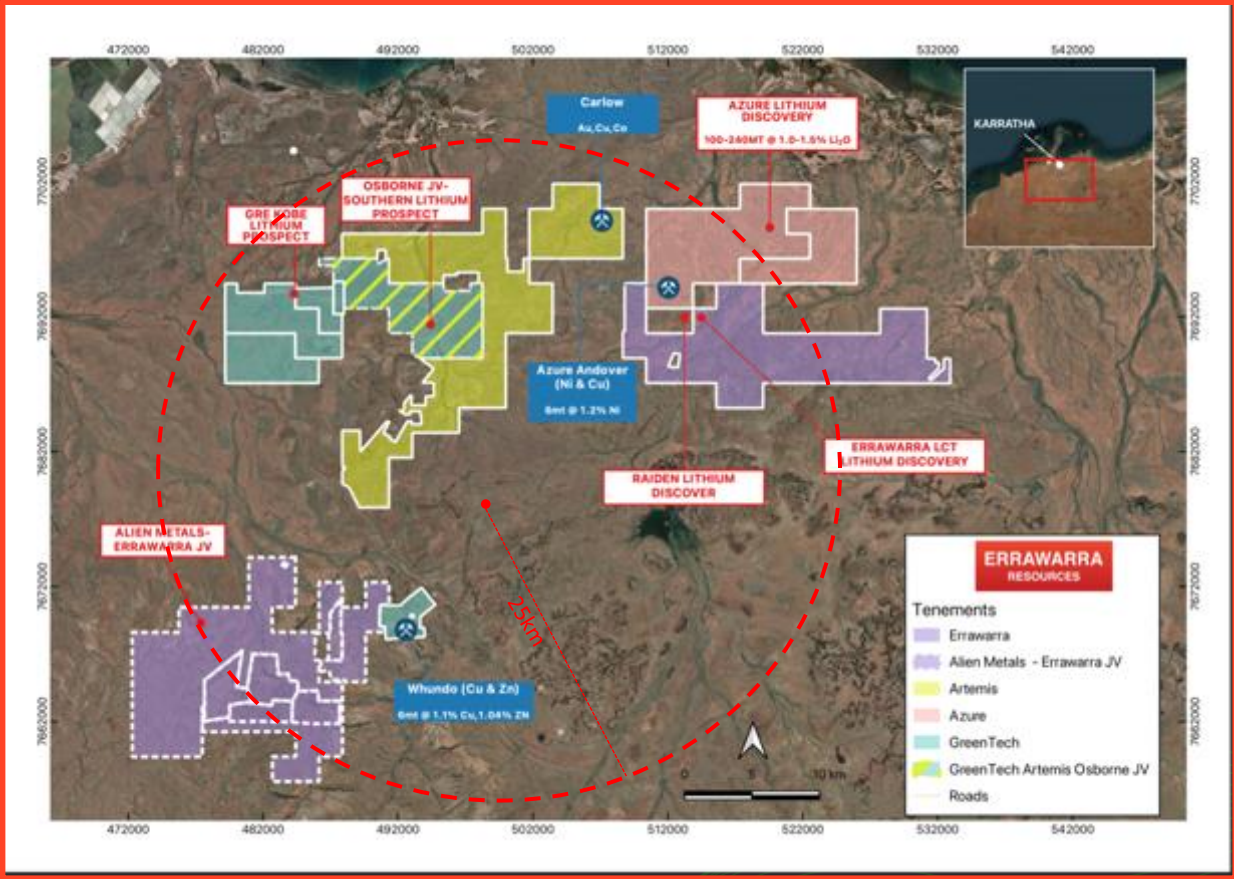
ASX: ERW

1,800,000 options exercisable at \$0.30 each expiring 26 November 2024  
1,800,000 options exercisable at \$0.30 each expiring 3 December 2024  
7,500,000 options exercisable at \$0.30 each expiring 21 April 2025  
1,500,000 options exercisable at \$0.25 each expiring 29 June 2025



# WA PROJECTS

PRIME LOCATION WITH GREAT POTENTIAL



**PINDERI HILLS**

**Li**  
LITHIUM

**Ni**  
NICKEL

**Cu**  
COPPER

**ANDOVER WEST**

**Li**  
LITHIUM

**Ni**  
NICKEL

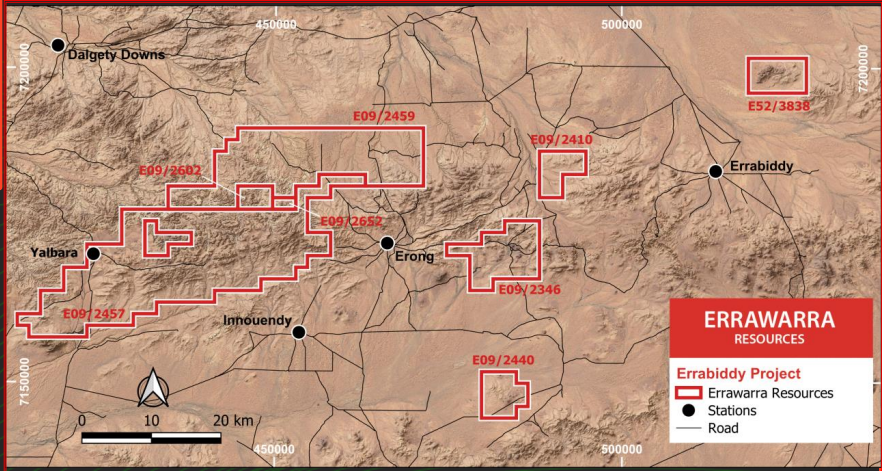
**Cu**  
COPPER

**ERRABIDDY**

**C**  
GRAPHITE

**REE**  
RARE EARTH METALS

**Au**  
GOLD



ASX: ERW

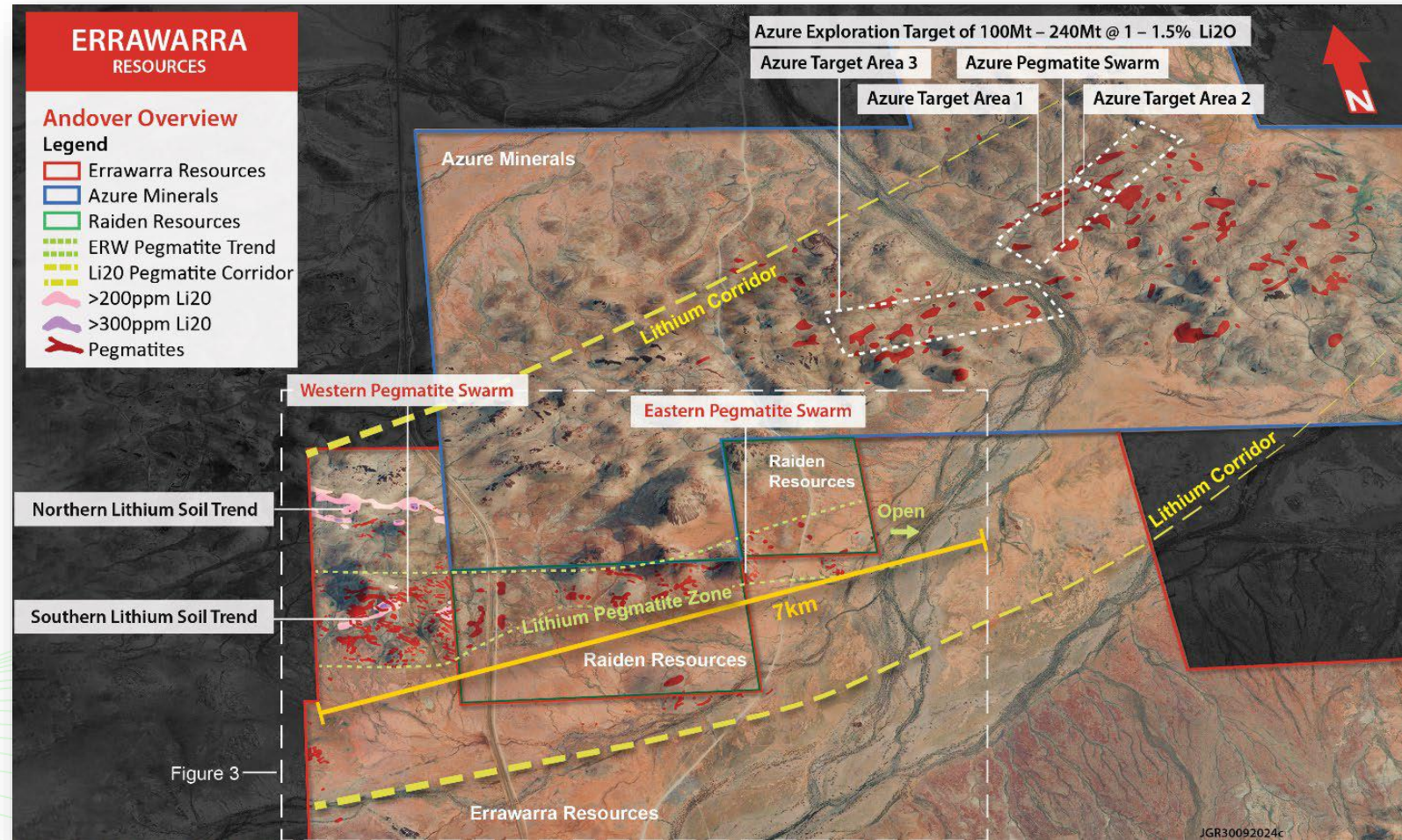


# ANDOVER WEST

## LITHIUM, NICKEL-COPPER, GOLD



- ERW pegmatite swarm **only ~12 kms from Azure Minerals** Ltd priority pegmatite location
- Further **exploration potential <4km from Raiden Resources** recent pegmatite discovery, reporting assays up to 3.8%  $\text{Li}_2\text{O}$ <sup>1</sup>
- During maiden nickel focused drilling program, a **number of pegmatites were intersected** in drill holes
- Multiple reported **lithium assays >100 ppm range**
- **Gold potential** at White Quartz Hill in eastern part of tenement is being reviewed
- Final reports were received for archaeological and ethnographic heritage surveys - clears the pathway for drilling.



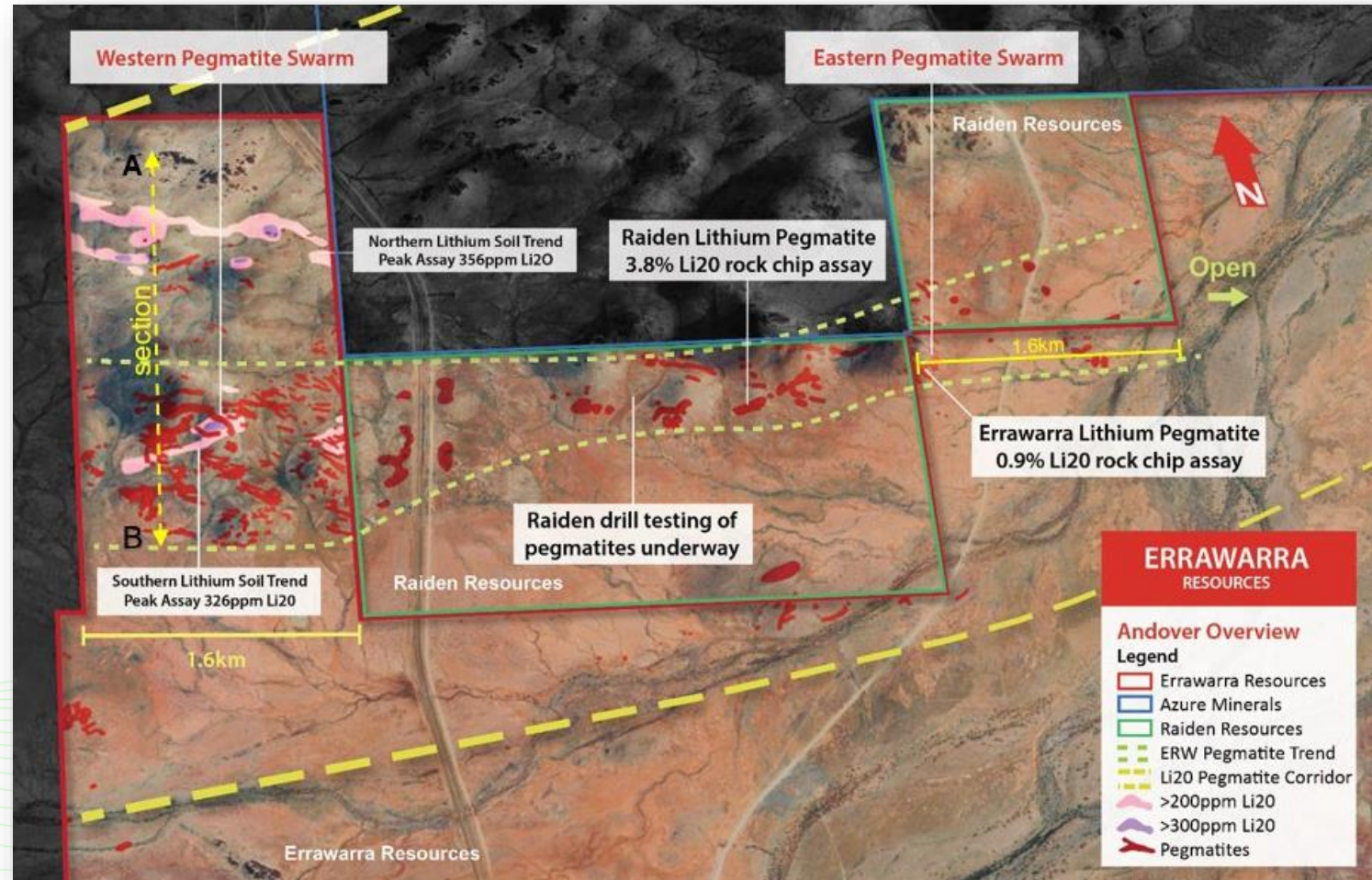


# ANDOVER WEST



## LITHIUM PEGMATITE POTENTIAL

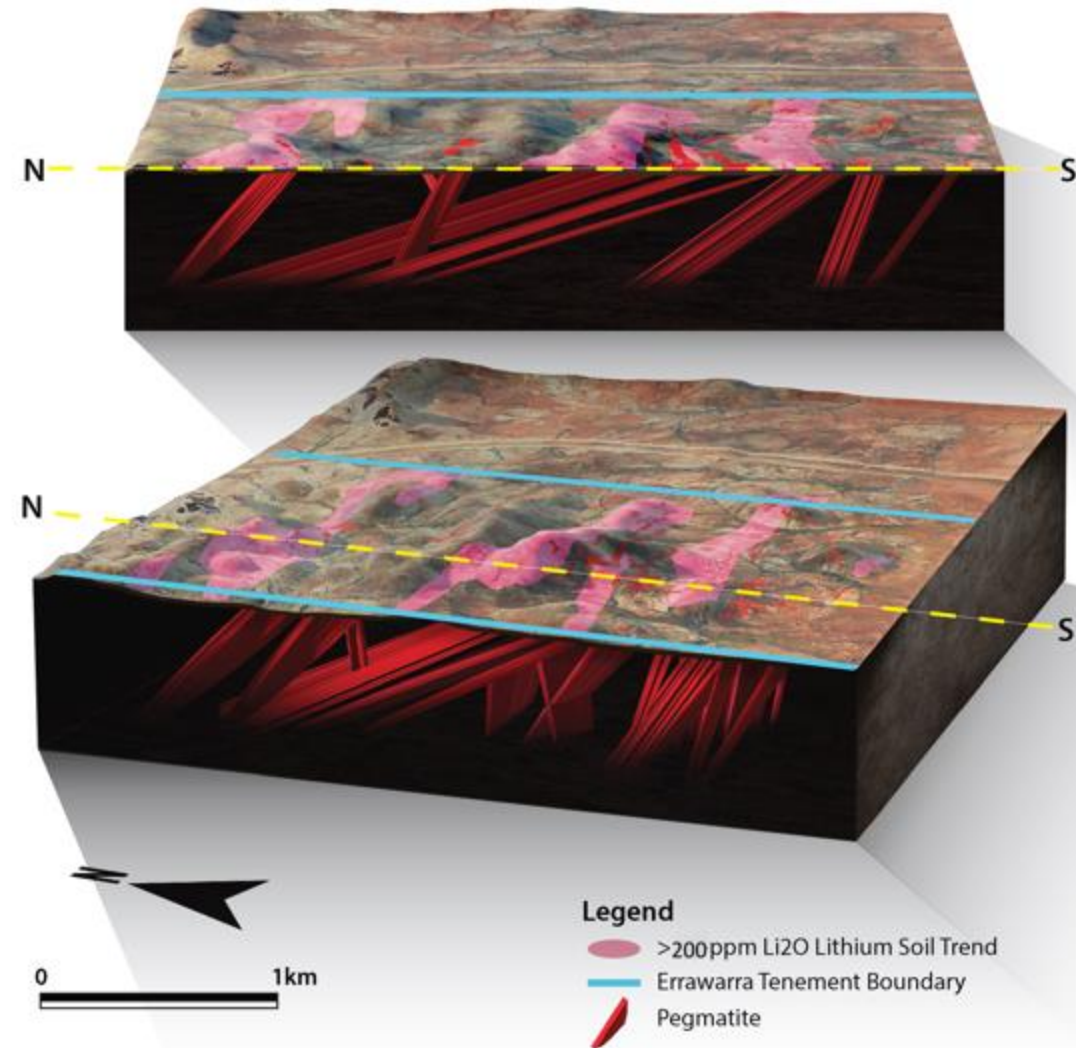
- Rock chip samples reported a peak value of **928ppm Li<sub>2</sub>O**<sup>1</sup>
- **Spodumene** has been **confirmed** in two samples selected for TIMA analysis at Curtin University<sup>2</sup>
- **Two strongly anomalous Li<sub>2</sub>O soil trends** have been highlighted in the NW portion of the tenement
- The southern lithium soil trend reported a peak **Li<sub>2</sub>O value of 325ppm**<sup>1</sup> and is situated along strike of the Raiden lithium pegmatite zone where Li<sub>2</sub>O values up to 3.8%<sup>1</sup> have been reported from rock chips
- Northern lithium soil trend (strike of 1.6km) peak assay of **356ppm Li<sub>2</sub>O**<sup>1</sup> reported
- Eastern pegmatite stacked pegmatite swarm has an associated **well-defined strong Lithium soil anomaly (peak 456ppm Li<sub>2</sub>O)**<sup>1</sup>.



# ANDOVER WEST

## PEGMATITE POTENTIAL

- Pegmatite orientation to the West of the tenement shows stacked system
- Further mineralised zones currently being investigated
- Multiple drill location potential
- Only 5km from Azure Minerals highly prospective area #3
- Heritage clearances completed and allows pathway to drilling





# PINDERI HILLS

ALIEN  
METALS

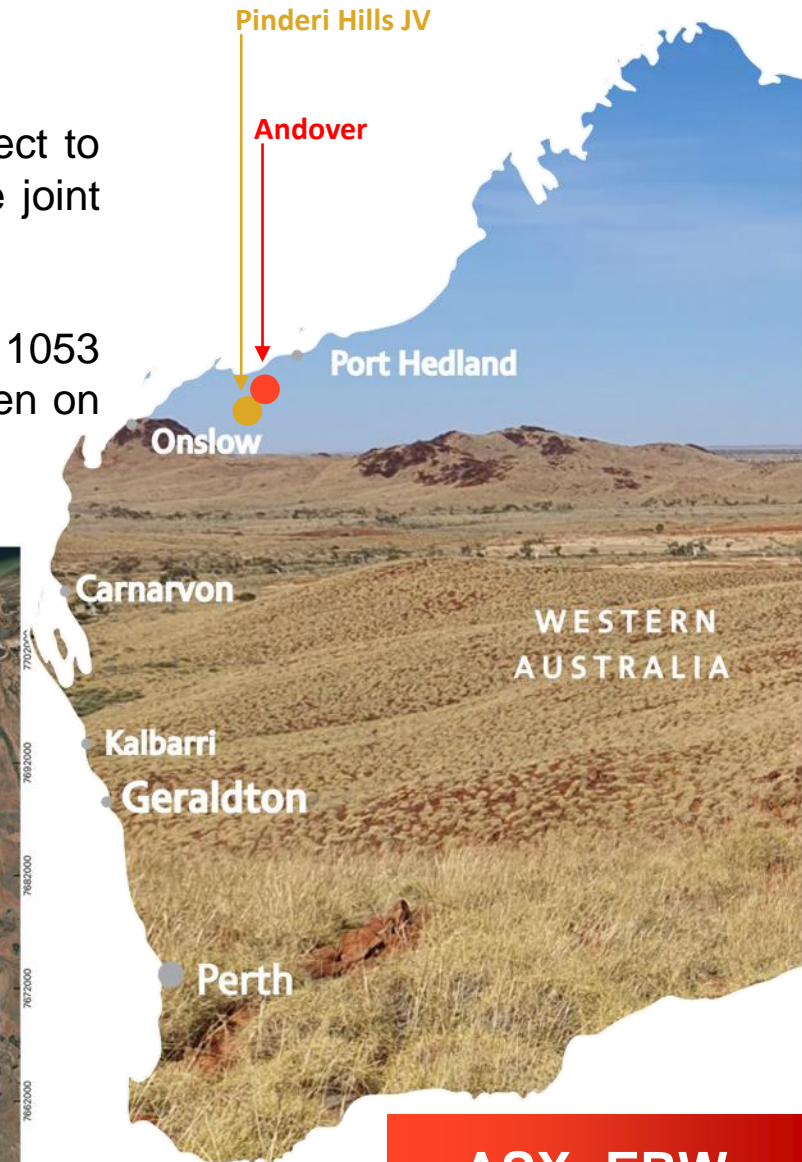
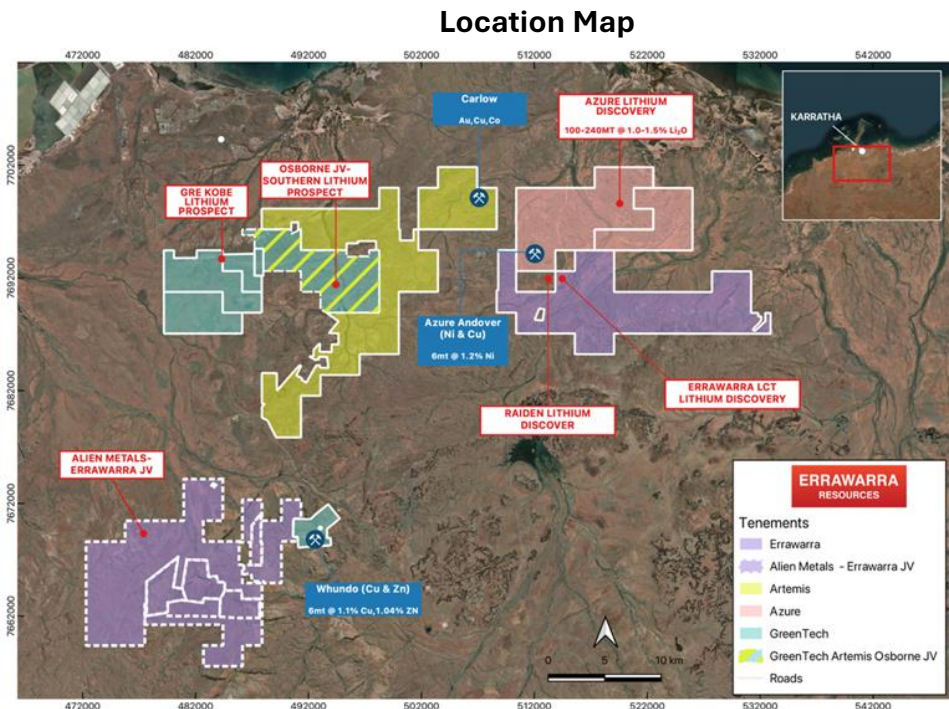
Ni  
NICKEL

Cu  
COPPER

Li  
LITHIUM

## POTENTIAL LITHIUM PROSPECTIVITY

- Errawarra has a Farm-in and Joint Venture with Alien Metals (AIM:UFO) with respect to the lithium rights of its tenements in the West Pilbara. Errawarra is manager of the joint venture and can earn up to 50% interest in the project tenements
- Intensive 2-month first pass reconnaissance exploration program completed with 1053 reconnaissance sampling comprising soils, stream and rock chip samples undertaken on the JV tenements were received.



ASX: ERW



# PINDERI HILLS

## POTENTIAL LITHIUM PROSPECTIVITY

- A significant surface  $\text{Li}_2\text{O}$  soil and stream anomaly with a footprint of  $6\text{km}^2$  was highlighted
- Rock chip sample reported 73ppm  $\text{Li}_2\text{O}$
- Stream sediment samples reported  $\text{Li}_2\text{O}$  greater than 50ppm  $\text{Li}_2\text{O}$
- Anomalous rock chip sample reported 288ppm  $\text{Li}_2\text{O}$  along with associated elevated Cs, Ta and Nb which is characteristic of a LCT pegmatite.

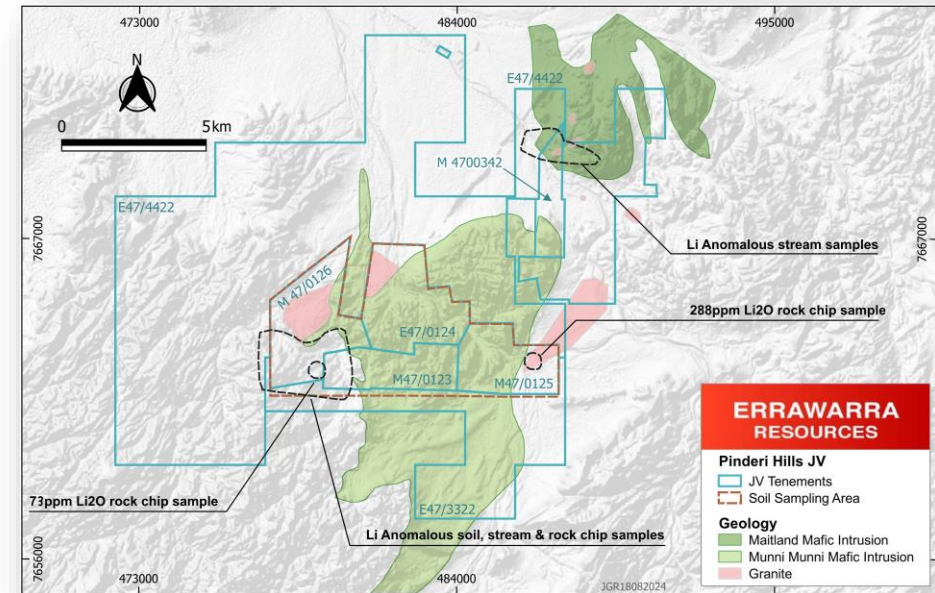
### Forward Plan

Ground investigation of the  $6\text{km}^2$  lithium soil anomaly and discrete lithium anomalous pegmatite is planned.

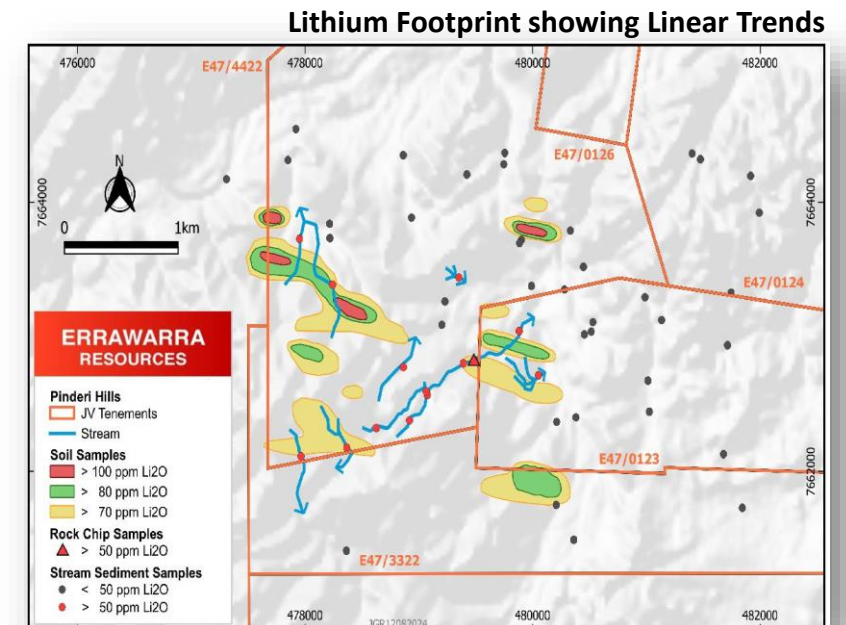
ASX: ERW



Open file aerial photography over the Maitland Intrusion.



JV Tenements

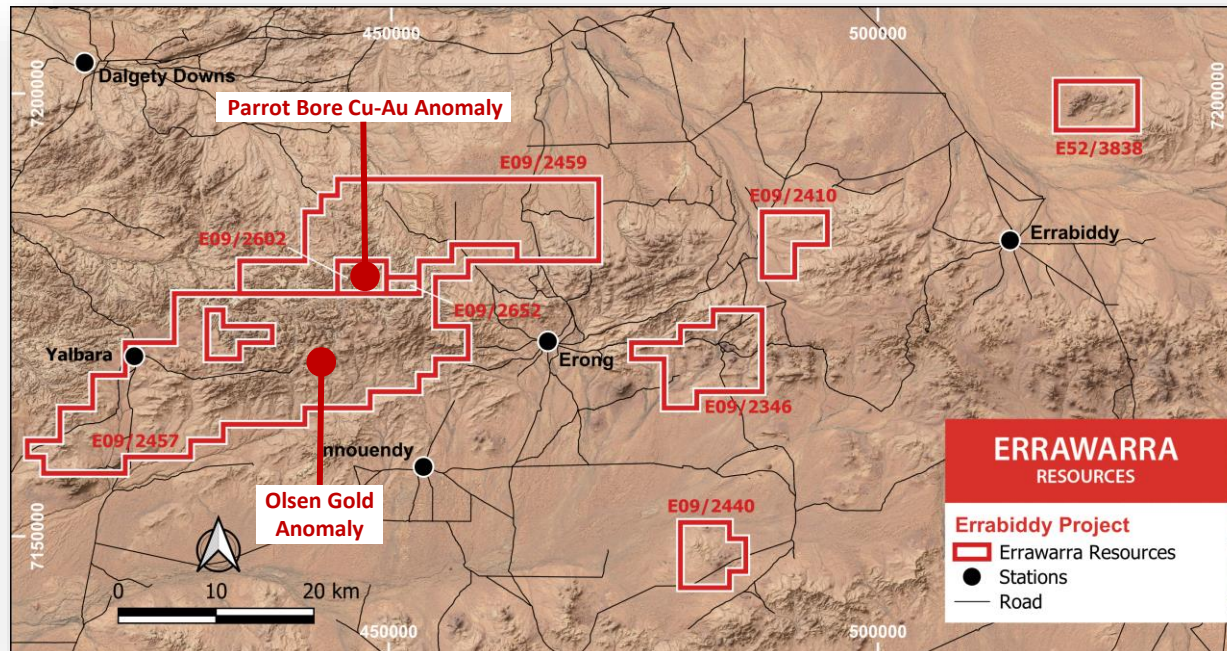




# ERRABIDDY

## RARE EARTH/GRAPHITE /NICKEL/GOLD

- Project comprises **8 discrete tenements** with a combined area of 1,000km<sup>2</sup>
- Discussion with a **significant group** in relation to forming a **joint venture** on selected tenements
- **MLEM** surveys confirm a **strong conductor** on tenement E09/2346
- New **Cu-Au soil anomaly** identified in soil samples taken in tenement E09/2602



REE  
RARE EARTH  
METALS

C  
GRAPHITE

Ni  
NICKEL

Au  
GOLD

ASX: ERW



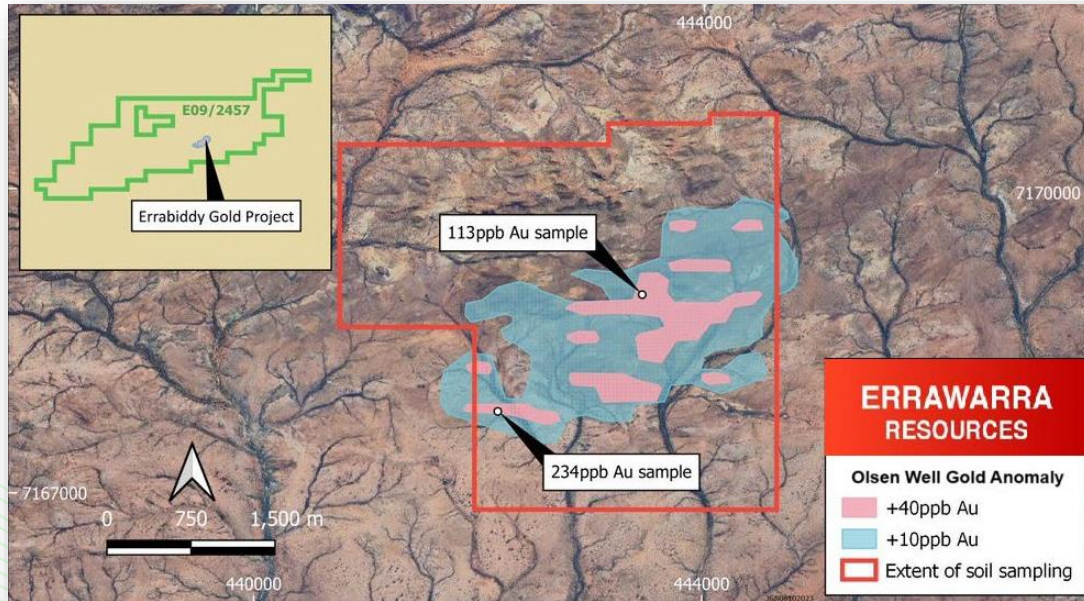
# ERRABIDDY

C  
GRAPHITE

Au  
GOLD

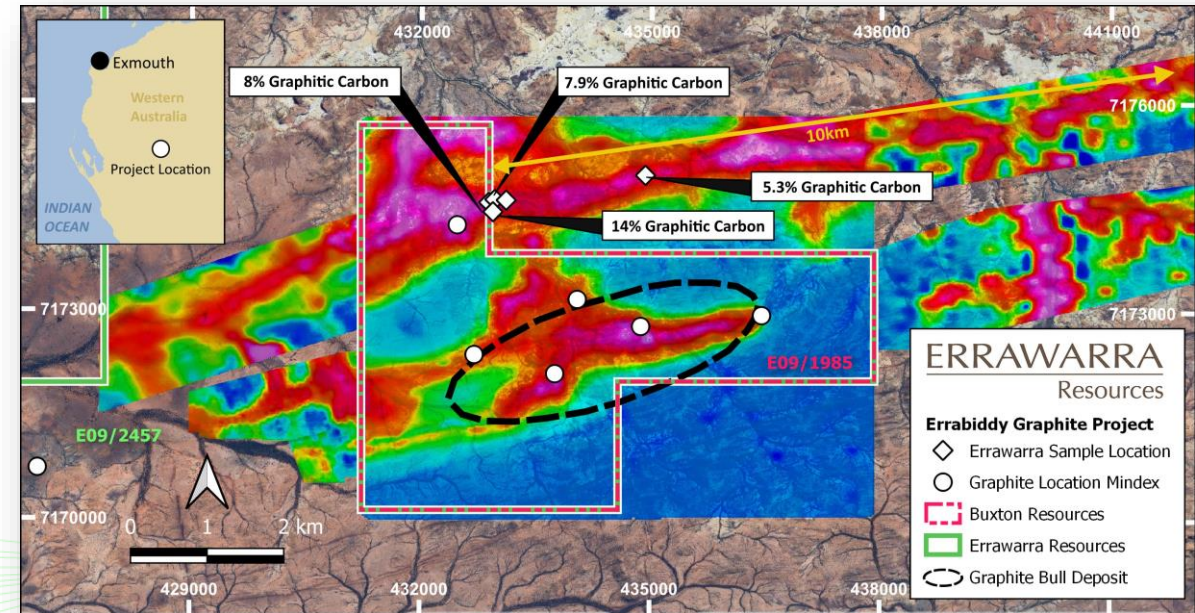
## GOLD

- Gold anomalous zone identified, covers more than **3km in strike x 750m width**
- Anomaly coincident with quartz and Fe rich rocks hosted within a granitic terrain
- The soil sampling grid was 300m x 100m with 462 samples collected
- Peak assay 234 ppb Au and associated with magnetic lineaments



## GRAPHITE

- Graphite mineralisation discovered by ASX:BUX extends into the Errabiddy project area
- Errabiddy rock chip samples return 14.8% and 9.8% TGC



### Forward Plan

Follow-up investigation of the new Cu/Au anomaly will be undertaken

ASX: ERW



# CONTACT US

**Thomas Reddicliffe**  
Executive Chairman

**George Ventouras**  
Executive Director

[info@errawarra.com](mailto:info@errawarra.com)

[errawarra.com](http://errawarra.com)



**ERRAWARRA**  
RESOURCES

**Li**  
LITHIUM

**Ni**  
NICKEL

**REE**  
RARE EARTH  
ELEMENTS

**Cu**  
COPPER

**C**  
GRAPHITE

**Au**  
GOLD

**ASX: ERW**