



ASX ANNOUNCEMENT

6 October 2022



Hines Hill POW submitted for Aircore Drilling

HIGHLIGHTS

- ❖ The program of works (PoW) submitted to DMIRS, covers the drilling of up to 100 Aircore holes at Hines Hill
 - White Cliff plans to drill to ~30m depth on a 200m x 200m spacing covering a central area of 1.2km by 1km
- ❖ Strike Drilling have been awarded the drilling contract with a Morooka based rig and support vehicle
- ❖ Maiden reconnaissance soil sampling program at Hines Hill confirmed the presence of rare earths (see ASX announcement 5 April 2022):
 - Maximum value of 550ppm TREO
 - 11 samples over 300ppm TREO
- ❖ The soil results correlate with magnetic features tentatively interpreted as possible carbonatite intrusives, with two intrusive bodies, covering an area of ~5km² in the northeast and ~2km² in the southwest, sampled to date
- ❖ White Cliff is planning a reconnaissance sampling program for the Company's 100%-owned North Kellerberrin project, which adjoins Hines Hill to the west, as well as targeting the other highlighted magnetic features at Hines Hill

White Cliff Minerals Limited (**White Cliff** or the **Company**) is pleased to provide an update on the Company's Hines Hill REE project in the Wheatbelt region, WA (**Figure 1**). White Cliff recently executed a land access agreement covering the majority of Hines Hill, and now registered with DMIRS, has allowed a program of works (**PoW**) to be submitted to DMIRS for the Company's maiden drilling program (**Figure 2**). A contract has also been signed with Strike Drilling for the supply of a Morooka based Aircore rig (**Figure 3**).

Commenting on the progress, White Cliff Technical Director Ed Mead said:

"Registration of the land access agreement at Hines Hill and submission of a POW to DMIRS, in conjunction with positive discussions with the land owner, has given us the confidence to also sign a contract with Strike Drilling to undertake the maiden aircore drill program. Once the POW is approved, we will be drilling. Hines Hill, and the adjoining North Kellerberrin project, are significantly underexplored tenements with potential to host ionic clay style REE deposits, with Hines Hill also having the potential for primary REE's if the tentatively interpreted carbonatite

ASX:WCN

wcminerals.com.au

White Cliff Minerals Limited
ABN 22 126 299 125

Level 8, 99 St Georges Tce, Perth WA 6000
PO Box 5638 St Georges Tce, Perth WA 6831

T + 61 8 9486 4036
F + 61 8 9486 4799

intrusives are proven in drilling. I look forward to being on the ground as maiden drilling gets underway”.



Figure 1: Li/REE Project location map in Western Australia

Hines Hill - REE Project

The Hines Hill REE project consists of a single tenement (**Figures 1 and 2**), within the wheatbelt region, located about 200km east of Perth on the Great Eastern Highway. The tenement area is 128Km² covering extensive grain growing properties.

Previous sampling by White Cliff targeted two magnetic features tentatively interpreted to be carbonatite intrusions, although they may represent differential non-carbonatite intrusives (**Figure 2**). The reconnaissance program indicated these do not outcrop and occupy lower areas of the topography.

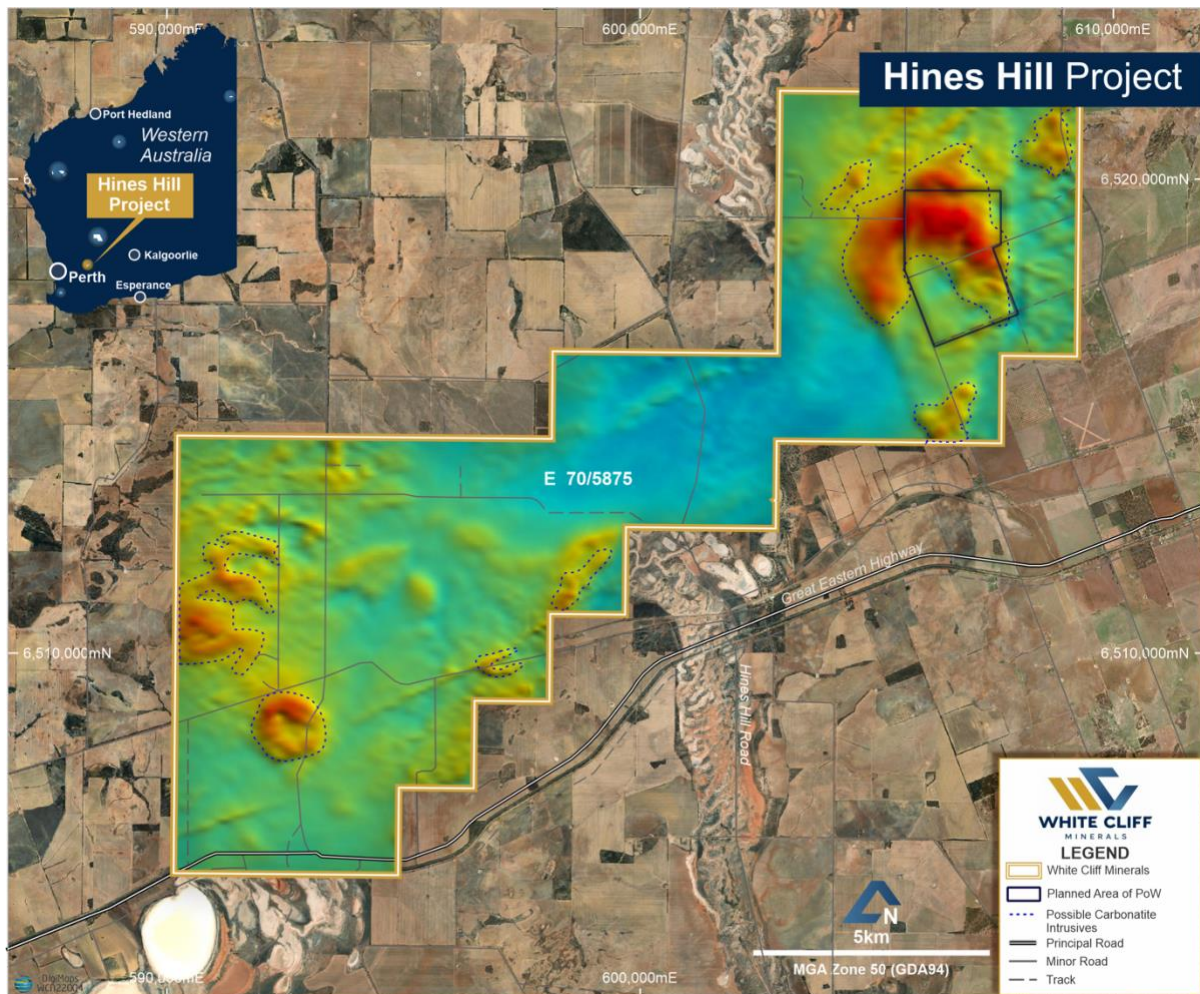


Figure 2: Aircore drill program location area within "Planned area of POW", Hines Hill.



Figure 3: Strike Drilling Morooka based Aircore drilling rig and support vehicle.

UPCOMING NEWSFLOW

- October:** Processing of existing magnetic data at Diemals REE/Li project
- October:** Assays from September and July Yinnetharra rock chip sampling program
- October:** Surface sampling program, Diemals REE/Li project
- November:** High resolution magnetics/radiometrics survey at Yinnetharra REE/Li project or potential geophysical survey targeting
- November:** Annual General Meeting
- November:** Heritage survey at Yinnetharra REE/Li project
- December:** Maiden RC program at Yinnetharra REE/Li project

ENDS

Further Information:

Dan Smith
Director
+61 8 9486 4036

Edward Mead
Director
+61 8 9486 4036

This announcement has been approved by the Board of White Cliff Minerals Limited.

Competent Persons Statement

The Information in this report that relates to exploration results, mineral resources or ore reserves is based on information compiled by Mr Allan Younger, who is a Member of the Australasian Institute of Mining and Metallurgy. Mr Younger is an employee of the company. Mr Younger has sufficient experience which is relevant to the style of mineralisation and type of deposits under consideration and to the activity that he is undertaking to qualify as a Competent Person as defined in the 2012 edition of the 'Australian Code for Reporting Exploration Results, Mineral Resources and Ore Reserves' (the JORC Code). Mr Younger consents to the inclusion of this information in the form and context in which it appears in this report.

White Cliff confirms that it is not aware of any new information or data that materially affects the information included in the original market announcements. White Cliff confirms that the form and context in which the Competent Person's findings are presented have not been materially modified from the original market announcements.