



15 September 2021

NEW GOLD DISCOVERY AT PARIS PROJECT

Highlights

- First pass drilling at priority targets proximal to the Paris pit has uncovered a second new gold discovery – “Strauss”
 - Initial assay results received from Strauss prospect include significant results of:
 - 12m @ 1.21g/t gold from 57m, incl. 3m @ 4.23g/t Au from 36m (21SRC005)
 - 6m @ 2.32g/t gold from 39m (21SRC020)
 - 9m @ 1.13g/t gold from 69m (21SRC021)
 - 6m @ 2.09g/t gold from 96m (21SRC022)
 - Drilling at Strauss has defined a consistent gold mineralised zone over minimum 150m in strike length
 - Gold zone open to the north and south, and at depth with shallow dip to the east
 - Strauss prospect is located approximately 3kms west of the Observation prospect where broad, high-grade gold was intercepted by Torque¹
 - Additional drill results pending from Strauss and several other Paris prospects drilled by Torque in its maiden drill programme since listing on ASX in late June 2021
-

Perth-based, Western Australian-focused gold explorer Torque Metals Limited is pleased to announce first pass drilling at the Paris Gold Project within the Boulder-Lefroy Fault Zone, has uncovered a second new gold discovery at the Strauss prospect. (See Figure 1)

A total of 24 RC holes for 1,722 metres were drilled at Strauss with initial, 3m composite, assay results including intersections of **12 metres at 1.21 grams per tonne gold from 57 metres in hole 21SRC005** (See Table 1 for initial assay results received and Figure 2, Figure 3 and Figure 4 for schematic intersections).

The assay results have identified a new mineralised zone covering a current minimum strike length of ~150 metres which remains open to the north and south, and at depth with a shallow dip to the east. (See Figure 5)

¹ Refer to ASX announcement dated 18th August 2021

Importantly, the Strauss prospect is an entirely new discovery unrelated to the recently reported Observation discovery where broad, high-grade gold was intercepted by Torque¹. (See Figure 1)

Commenting on the results, Torque Executive Chairman Mr Ian Finch said:

“Our first pass drilling campaign at Paris continues to deliver, with a second new gold discovery identified covering a minimum 150 metre strike length, and open in all directions, offering good scope to grow in scale.

Of particular importance is that, whilst only 3km west of the recent broad and high-grade gold intersected at Observation, Strauss is a completely new gold mineralised zone discovered, and is further evidence of the potential for significant gold discoveries along the Boulder Lefroy Fault Zone.

While further drilling at Observation remains a priority, follow-up drilling will also be undertaken at Strauss to understand the potential scale of the mineralised zone. In addition, there are further assay results pending from Strauss and other Paris prospects which we will announce in the coming weeks as they come to hand.”

Table 1: Significant Intersections from drilling at Strauss

Hole ID	Depth From (m)	Depth To (m)	Element	Interval Width	Grade (Au)	Intercept Description
21SRC005	36	39	Au_ppm	3	4.23	3m @ 4.23 ppm
21SRC005	57	69	Au_ppm	12	1.21	12m @ 1.21 ppm
21SRC020	39	45	Au_ppm	6	2.32	6m @ 2.32 ppm
21SRC020	57	63	Au_ppm	6	1.47	6m @ 1.47 ppm
21SRC021	33	42	Au_ppm	9	0.95	9m @ 0.95 ppm
21SRC021	60	63	Au_ppm	3	1.33	3m @ 1.33 ppm
21SRC021	69	78	Au_ppm	9	1.13	9m @ 1.13 ppm
21SRC022	96	102	Au_ppm	6	2.09	6m @ 2.09 ppm

A total of 102 first pass holes were drilled at Paris, for a total of 7427 metres. A total of 2728 samples were despatched to laboratory, of which 2008 (or 74.6%) have been returned and 720 samples (25.4%) remain outstanding.

The eight prospects recently drilled by Torque at Paris Project include: **Observation** (22 holes for 1688m), **Strauss** (24 holes for 1722m), **HHH South** (11 holes for 804m), **Paris North** (6 holes for 402m), **HHH pit** (3 holes for 308m), **Paris Pit** (4 holes for 619m), **Marmaracs** (21 holes for 1116m), and **Lady Doris** (11 holes for 768m).

The purpose of the drilling at these prospects was to better define the zones most likely to rapidly increase the project's resource base. The project has a previously reported existing 32,700oz JORC compliant gold resource, most of which lies below and along strike from the existing HHH and Paris mines.

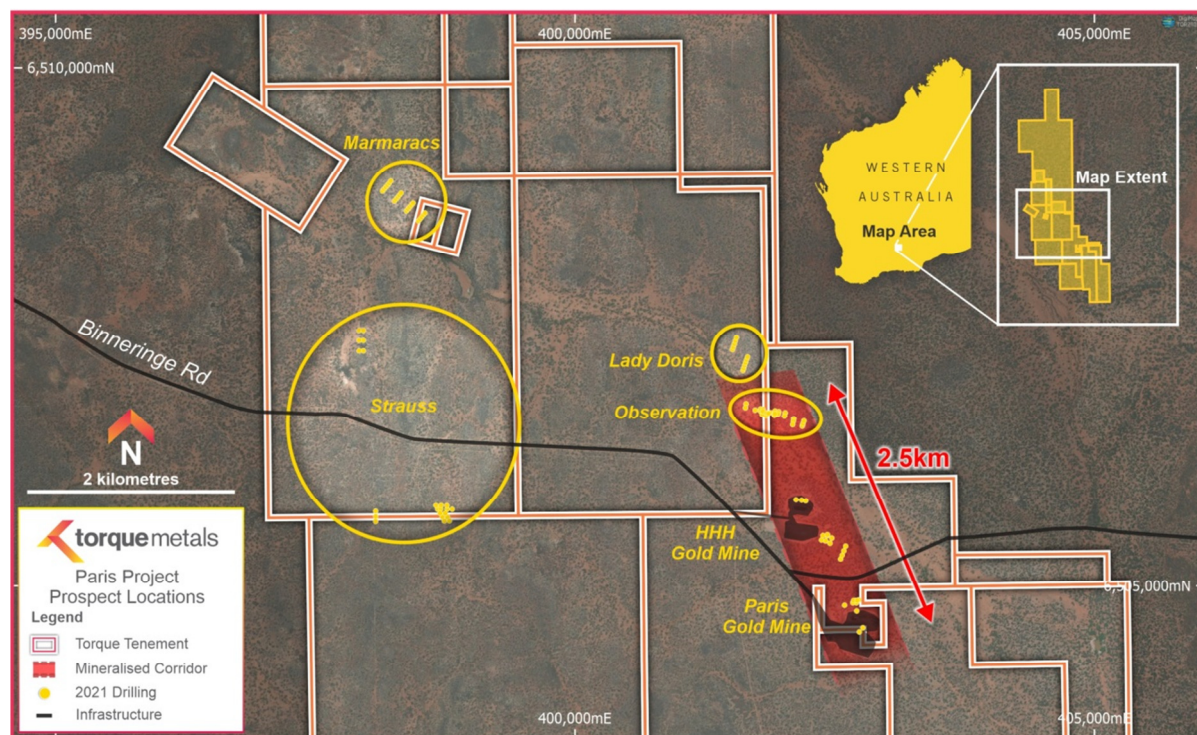


Figure 1: Location of Strauss prospect in relation to other prospects at Paris.

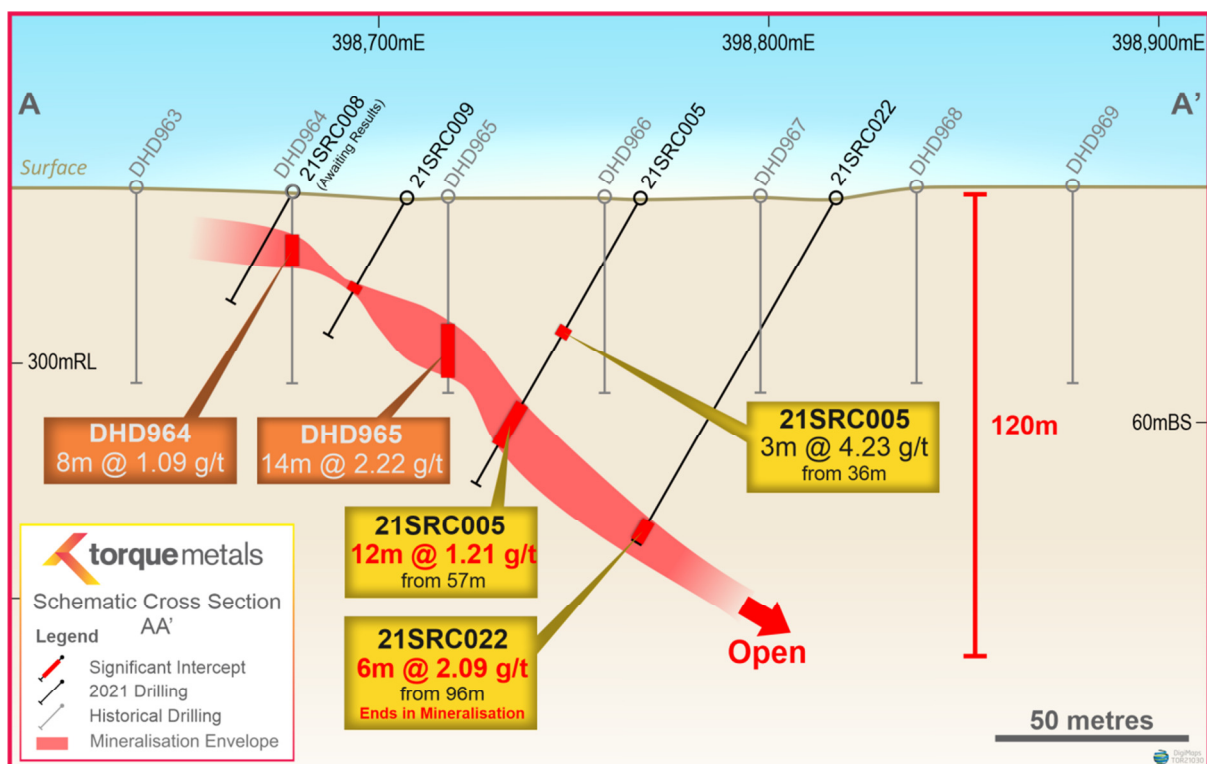


Figure 2: Schematic cross section showing significant intercepts with mineralisation envelope from first phase drilling campaign (21SRC005 and 21SRC022) and historical drilling at Strauss Prospect

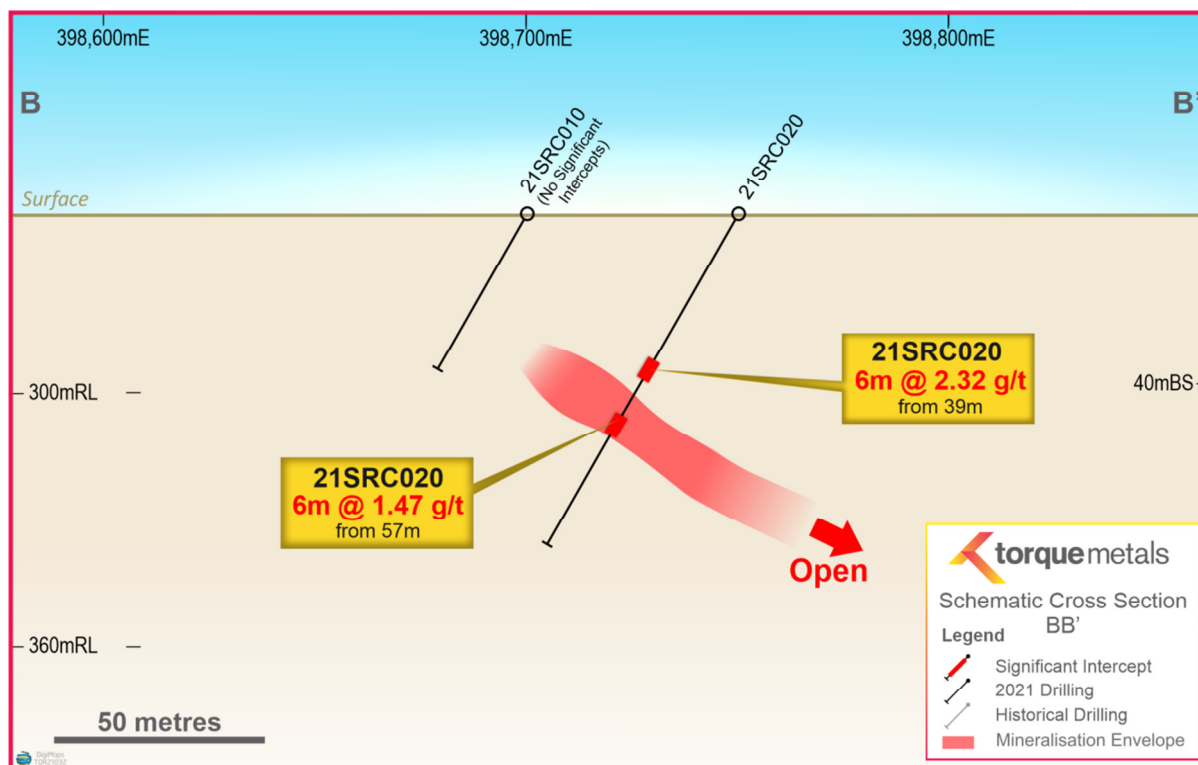


Figure 3: Schematic cross section showing significant intercepts with mineralisation envelope from first phase drilling campaign (21SRC020) and historical drilling at Strauss Prospect

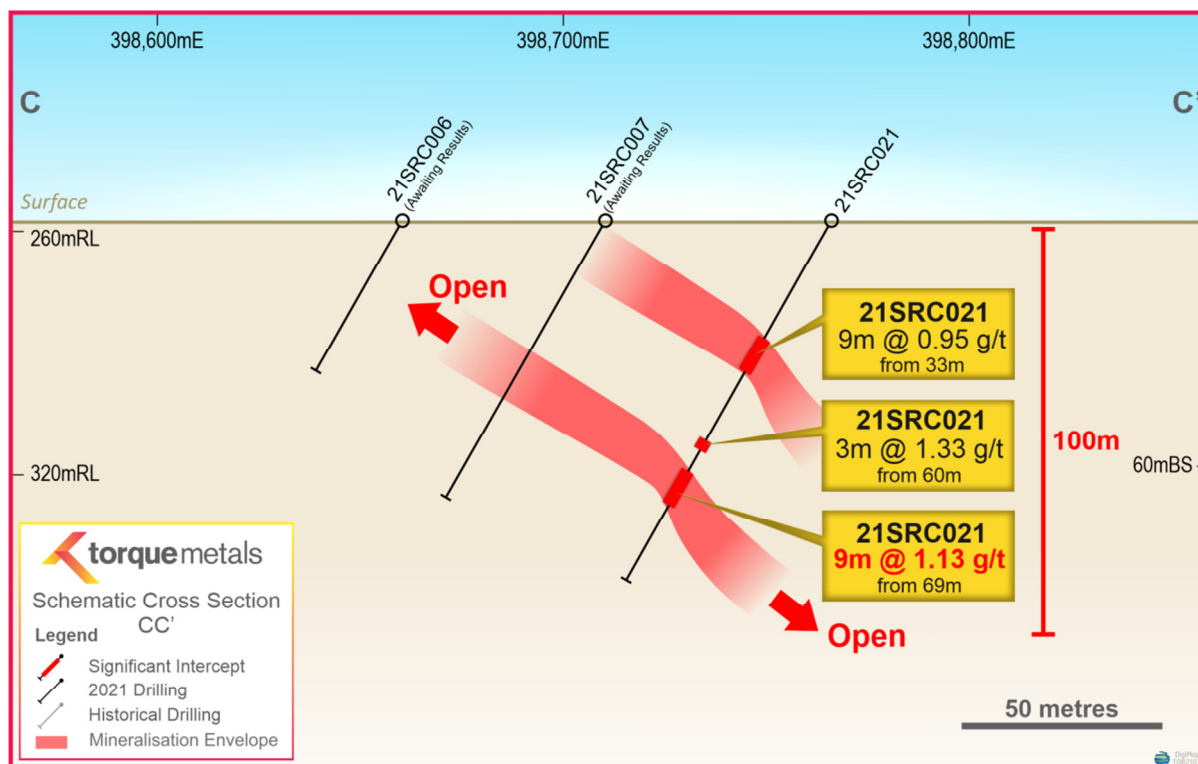


Figure 4: Schematic cross section showing significant intercepts with mineralisation envelope from first phase drilling campaign (21SRC021) and historical drilling at Strauss Prospect

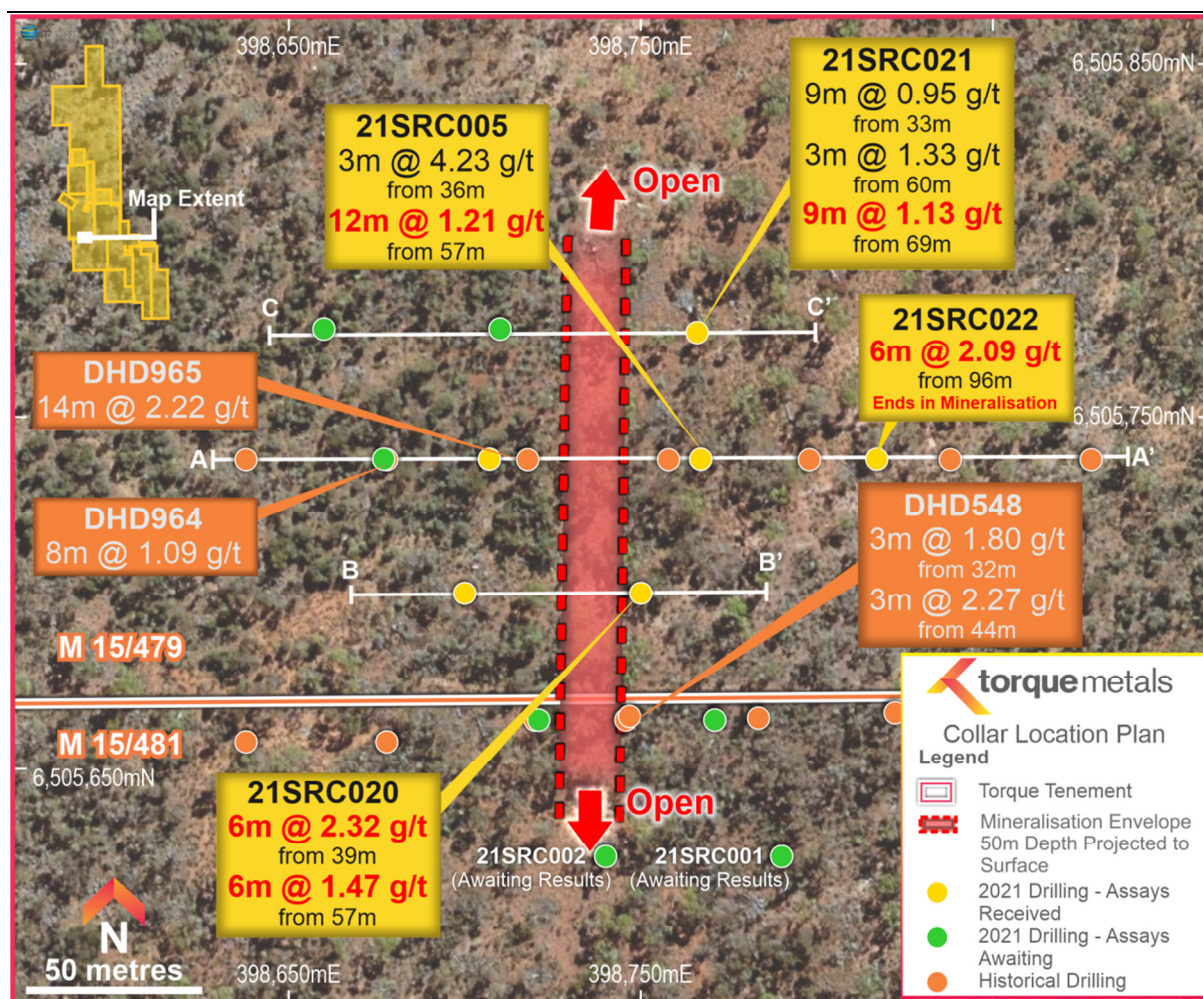


Figure 5: Collar location plan at Strauss Prospect shows minimum 150m strike length open to the north and south and at depth

The Paris Project

Torque's Paris Project lies within the area known as the Boulder-Lefroy Fault Zone (Figure 6). This prolific gold-bearing structure is host to numerous mines that have produced many millions of ounces of gold. Not least of these mines is the world famous "Super Pit" in Kalgoorlie.

Torque's Paris Project area remains vastly underexplored, with past drilling generally restricted to the top 50 metres, highlighting significant opportunities for discovery of gold mineralisation by the application of modern-day exploration techniques and the undertaking of more extensive, and deeper, drilling.

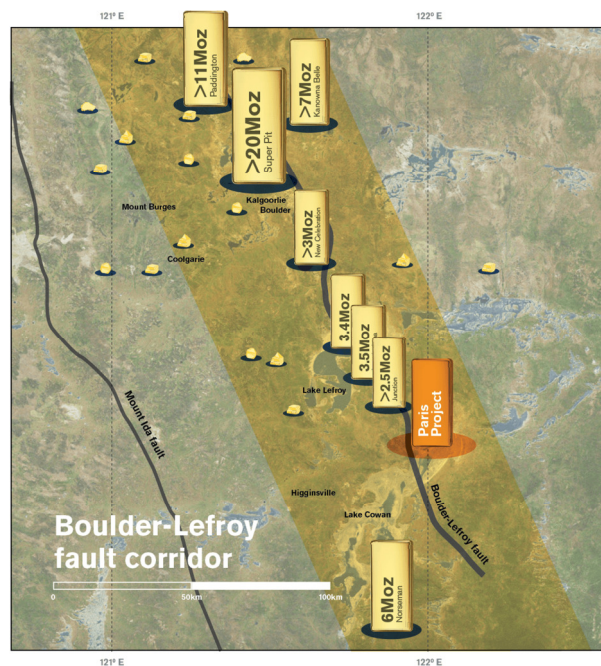


Figure 6: Paris Project located within the Boulder-Lefroy Fault Corridor

All drill hole intersections and assay data mentioned in relation to a JORC Resource Estimate of 32,700oz relate to historical work. They and the Indicated Resource Estimate have previously been reported in the Torque Metals Limited Prospectus dated 14 April 2021, in the Independent Technical Assessment Report prepared by Agricola Mining Consultants Pty Ltd and also in the Company's Quarterly Report dated 30 July 2021 and ASX Announcement of 14 July 2021. The Paris Mineral Resource is reported above a block grade of 0.5 g/t Au using a 35 g/t Au top cut. The HHH Mineral Resource is reported above a block grade of 0.5 g/t Au using a 50 g/t Au top cut.

Depleted Mineral Resource Estimate				
Deposit	Category	Tonnes	g/t Au	Ounce
Paris	Indicated	81,000	4.50	11,700
HHH	Indicated	233,000	2.80	21,000
Total		314,000	3.24	32,700

The relevant JORC Competent Person Statement and Consent can be found on pages 1 and 2 of that report (pages 63 and 64 of the Prospectus). Torque Metals confirms that it is not aware of any new information or data that materially affects the information included in this announcement and that all material assumptions and technical parameters underpinning any resource estimates quoted herein continue to apply and have not materially changed.

Competent Persons Statement – Exploration Results

The information in this announcement that relates to Exploration Results is based on information compiled by Mr Rohan Williams, who is a Member of the Australasian Institute of

Mining and Metallurgy. Mr Williams is an employee of Torque Metals Limited ("the Company"). Rohan Williams has sufficient experience which is relevant to the style of mineralisation and type of deposit under consideration and to the activity which he is undertaking to qualify as a Competent Person as defined in the 2012 Edition of the 'Australasian Code for Reporting of Exploration Results, Mineral Resources and Ore Reserves'. Rohan Williams consents to the inclusion in this announcement of the matters based on his information in the form and context in which it appears.

Forward Looking Statements

This report may contain certain "forward-looking statements" which may not have been based solely on historical facts, but rather may be based on the Company's current expectations about future events and results. Where the Company expresses or implies an expectation or belief as to future events or results, such expectation or belief is expressed in good faith and believed to have a reasonable basis. However, forward looking statements are subject to risks, uncertainties, assumptions and other factors which could cause actual results to differ materially from future results expressed, projected or implied by such forward-looking statements. Readers should not place undue reliance on forward looking information. The Company does not undertake any obligation to release publicly any revisions to any "forward-looking statement" to reflect events or circumstances after the date of this report, or to reflect the occurrence of unanticipated events, except as may be required under applicable securities laws.

ENDS

For further information, please contact:

Ian D. Finch
Executive Chairman
ian@torquemetals.com
M: +61 414 270 248

Media

David Tasker / Colin Jacoby
Chapter One Advisors
dtasker@chapteroneadvisors.com.au / cjacoby@chapteroneadvisors.com.au
M: +61 433 112 936 / +61 439 980 359

Appendix 1: Laboratory assay results: Fire Assay 40g charge after 4-acid digest with ICP analysis.

Only gold assays ≥ 0.05 ppm (0.05 gpt) are recorded in the following table, except where relevant as part of a longer intercept.

Hole No	From (m)	To (m)	Width (m)	Au (ppm)
21SRC003	30	33	3	0.10
21SRC003	33	36	3	0.04
21SRC003	36	39	3	0.10
21SRC003	39	42	3	0.04
21SRC003	54	57	3	0.36
21SRC003	57	60	3	0.04
21SRC003	60	63	3	0.03
21SRC003	63	66	3	0.07
21SRC003	66	69	3	0.13
21SRC003	69	72	3	-0.01
21SRC003	72	75	3	0.03
21SRC003	75	78	3	0.32
21SRC003	78	81	3	-0.01
21SRC003	81	84	3	0.07
21SRC003	84	87	3	1.20
21SRC003	87	90	3	0.11
21SRC003	90	93	3	0.04
21SRC003	93	96	3	0.03
21SRC004	0	3	3	0.09
21SRC004	3	6	3	0.10
21SRC004	6	9	3	-0.01
21SRC004	9	12	3	0.03
21SRC004	12	15	3	-0.01
21SRC004	15	18	3	0.25
21SRC004	18	21	3	1.62
21SRC004	21	24	3	0.13
21SRC004	24	27	3	0.41
21SRC004	27	30	3	0.69
21SRC004	30	33	3	0.20
21SRC004	33	36	3	-0.01
21SRC004	36	39	3	0.34
21SRC004	39	42	3	0.15
21SRC005	0	3	3	0.05
21SRC005	21	24	3	0.06
21SRC005	24	27	3	0.07
21SRC005	27	30	3	0.27
21SRC005	30	33	3	0.24
21SRC005	33	36	3	0.14
21SRC005	36	39	3	4.23
21SRC005	39	42	3	0.07
21SRC005	42	45	3	0.22

Hole No	From (m)	To (m)	Width (m)	Au (ppm)
21SRC005	45	48	3	-0.01
21SRC005	48	51	3	0.32
21SRC005	51	54	3	0.06
21SRC005	54	57	3	0.08
21SRC005	57	60	3	1.50
21SRC005	60	63	3	0.16
21SRC005	63	66	3	0.54
21SRC005	66	69	3	2.64
21SRC005	69	72	3	0.26
21SRC005	72	75	3	0.10
21SRC005	75	78	3	0.05
21SRC009	0	3	3	0.10
21SRC009	24	27	3	0.26
21SRC009	27	30	3	0.10
21SRC009	30	33	3	0.06
21SRC009	33	36	3	0.19
21SRC010	18	21	3	0.14
21SRC010	21	24	3	0.38
21SRC010	24	27	3	0.07
21SRC010	27	30	3	0.07
21SRC010	30	33	3	-0.01
21SRC010	33	36	3	-0.01
21SRC010	36	39	3	0.18
21SRC010	39	42	3	0.21
21SRC020	0	3	3	0.09
21SRC020	30	33	3	0.37
21SRC020	33	36	3	0.15
21SRC020	36	39	3	0.05
21SRC020	39	42	3	2.65
21SRC020	42	45	3	1.98
21SRC020	45	48	3	0.05
21SRC020	48	51	3	0.09
21SRC020	51	54	3	0.43
21SRC020	54	57	3	1.29
21SRC020	57	60	3	1.65
21SRC020	60	63	3	0.72
21SRC020	63	66	3	0.14
21SRC021	0	3	3	0.05
21SRC021	27	30	3	0.03
21SRC021	30	33	3	-0.01
21SRC021	33	36	3	1.63
21SRC021	36	39	3	0.50
21SRC021	39	42	3	0.71
21SRC021	42	45	3	0.14
21SRC021	45	48	3	0.15
21SRC021	48	51	3	0.12

Hole No	From (m)	To (m)	Width (m)	Au (ppm)
21SRC021	51	54	3	0.09
21SRC021	54	57	3	0.25
21SRC021	57	60	3	0.29
21SRC021	60	63	3	1.33
21SRC021	63	66	3	0.08
21SRC021	66	69	3	0.21
21SRC021	69	72	3	1.99
21SRC021	72	75	3	0.04
21SRC021	75	78	3	1.37
21SRC021	78	81	3	0.10
21SRC021	81	84	3	0.47
21SRC021	84	87	3	0.40
21SRC021	87	90	3	0.55
21SRC021	90	93	3	0.04
21SRC022	33	36	3	0.03
21SRC022	36	39	3	0.19
21SRC022	39	42	3	0.08
21SRC022	42	45	3	0.10
21SRC022	45	48	3	0.07
21SRC022	48	51	3	0.07
21SRC022	51	54	3	0.15
21SRC022	93	96	3	0.21
21SRC022	96	99	3	0.97
21SRC022	99	102	3	3.20

Hole ID	Easting	Northing	Prospect	RL	Depth	Azimuth	Dip
21SRC001	398790	6505625	Strauss	342m	78m	270°	-60°
21SRC002	398740	6505625	Strauss	342m	42m	270°	-60°
21SRC003	398771	6505664	Strauss	342m	102m	270°	-60°
21SRC004	398721	6505664	Strauss	342m	48m	270°	-60°
21SRC005	398767	6505738	Strauss	342m	84m	270°	-60°
21SRC006	398660	6505775	Strauss	342m	42m	270°	-60°
21SRC007	398710	6505775	Strauss	342m	78m	270°	-60°
21SRC008	398677	6505738	Strauss	342m	30m	270°	-60°
21SRC009	398707	6505738	Strauss	342m	54m	270°	-60°
21SRC010	398700	6505700	Strauss	342m	42m	270°	-60°
21SRC011	397962	6507363	Strauss	342m	42m	90°	-60°
21SRC012	397921	6507363	Strauss	342m	102m	90°	-60°
21SRC013	397921	6507263	Strauss	342m	102m	270°	-60°
21SRC014	397962	6507263	Strauss	342m	66m	270°	-60°
21SRC015	397921	6507463	Strauss	342m	102m	90°	-60°
21SRC016	397962	6507463	Strauss	342m	102m	90°	-60°
21SRC017	398080	6505620	Strauss	342m	54m	270°	-60°
21SRC018	398080	6505668	Strauss	342m	48m	270°	-60°
21SRC019	398080	6505720	Strauss	342m	48m	270°	-60°
21SRC020	398750	6505700	Strauss	342m	90m	270°	-60°
21SRC021	398766	6505774	Strauss	342m	102m	270°	-60°
21SRC022	398817	6505738	Strauss	342m	102m	270°	-60°
21SRC023	397960	6507263	Strauss	342m	60m	90°	-60°
21SRC024	397918	6507263	Strauss	342m	102m	90°	-60°

Table 2. Holes drilled at Strauss Prospect, Paris Gold Project, in the maiden RC drill programme. All locations on Australian Geodetic Grid MGA_GDA94-51. The azimuth shown is the magnetic azimuth of the drilling direction.

Appendix 2

JORC Code, 2012 Edition – Table 1 Exploration Results

Section 1 Sampling Techniques and Data

Criteria	JORC Code explanation	Commentary
Sampling techniques	<ul style="list-style-type: none"> Nature and quality of sampling (e.g. cut channels, random chips, or specific specialised industry standard measurement tools appropriate to the minerals under investigation, such as down hole gamma sondes, or handheld XRF instruments, etc). These examples should not be taken as limiting the broad meaning of sampling. Include reference to measures taken to ensure sample representivity and the appropriate calibration of any measurement tools or systems used. Aspects of the determination of mineralisation that are Material to the Public Report. In cases where 'industry standard' work has been done this would be relatively simple (e.g. 'reverse circulation drilling was used to obtain 1 m samples from which 3 kg was pulverised to produce a 30 g charge for fire assay'). In other cases, more explanation may be required, such as where there is coarse gold that has inherent sampling problems. Unusual commodities or mineralisation types (e.g. submarine nodules) may warrant disclosure of detailed information. 	<ul style="list-style-type: none"> For this drilling programme Torque Metals Limited (Torque Metals) is utilising angled Reverse Circulation (RC) drill holes. RC drilling was drilled to generally accepted industry standards producing 1.0m samples which were collected beneath the cyclone and then passed through a cone splitter. The splitter reject sample was collected into green plastic bags or plastic buckets and laid out on the ground in 20-40m rows. The holes were sampled as initial 3m composites for all prospects (except for Marmaracs and Lady Doris which used 4m composites) using a PVC spear to produce an approximate representative 3kg sample into pre-numbered calico sample bags. Anomalous 3m composites will be individually assayed as the 1m splits which were collected beneath the RC rig cyclone and passed through the cone splitter being a more representative sample of the lithologies intersected. The full length of each hole drilled was sampled. All Torque Metals samples collected are being submitted to a contract commercial laboratory for drying, crushing and homogenising the sample to produce a 40g charge for fire assay and a separate sample for 4- acid digest and 18 multi-element analysis using an Induced Coupled Plasma Mass Spectrometer
Drilling techniques	<ul style="list-style-type: none"> Drill type (e.g. core, reverse circulation, open-hole hammer, rotary air blast, auger, Bangka, sonic, etc) and details (e.g. core diameter, triple or standard tube, depth of diamond tails, face-sampling bit or other type, whether core is oriented and if so, by what method, etc). 	<ul style="list-style-type: none"> Torque Metals Ltd Reverse Circulation (RC) holes were drilled with a contract RC drilling rig. All RC holes were drilled using a 145mm (5.5in) face-sampling drilling bit.



Criteria	JORC Code explanation	Commentary
<i>Drill sample recovery</i>	<ul style="list-style-type: none"> • Method of recording and assessing core and chip sample recoveries and results assessed. • Measures taken to maximise sample recovery and ensure representative nature of the samples. • Whether a relationship exists between sample recovery and grade and whether sample bias may have occurred due to preferential loss/gain of fine/coarse material. 	<ul style="list-style-type: none"> • The RC samples were not weighed or measured for recovery. • To ensure maximum sample recovery and the representivity of the samples, an experienced Company geologist was present during drilling to monitor the sampling process. Any issues were immediately rectified. • Sample recovery was recorded by the Company Field Assistant and this was based on how much of the sample is returned from the cyclone and cone splitter. This is recorded as good, fair, poor or no sample. • Torque Metals Ltd is satisfied that the RC holes have taken a sufficiently representative sample of the interval and minimal loss of fines has occurred in the RC drilling resulting in minimal sample bias. • No twin RC drill holes have been completed to assess sample bias. • At this stage no investigations have been made into whether there is a relationship between sample recovery and grade.
<i>Logging</i>	<ul style="list-style-type: none"> • Whether core and chip samples have been geologically and geotechnically logged to a level of detail to support appropriate Mineral Resource estimation, mining studies and metallurgical studies. • Whether logging is qualitative or quantitative in nature. Core (or costean, channel, etc) photography. • The total length and percentage of the relevant intersections logged. 	<ul style="list-style-type: none"> • All of the 1m RC samples were sieved and collected into 20m chip trays for geological logging of colour, weathering, lithology, alteration and mineralisation for potential Mineral Resource estimation and mining studies. • RC logging is both qualitative and quantitative in nature. • The total length of the RC holes was logged. Where no sample was returned due to cavities/voids it was recorded as such.



Criteria	JORC Code explanation	Commentary
Sub-sampling techniques and sample preparation	<ul style="list-style-type: none"> • If core, whether cut or sawn and whether quarter, half or all core taken. • If non-core, whether riffled, tube sampled, rotary split, etc and whether sampled wet or dry. • For all sample types, the nature, quality and appropriateness of the sample preparation technique. • Quality control procedures adopted for all sub-sampling stages to maximise representivity of samples. • Measures taken to ensure that the sampling is representative of the in-situ material collected, including for instance results for field duplicate/second-half sampling. • Whether sample sizes are appropriate to the grain size of the material being sampled. 	<ul style="list-style-type: none"> • Sampling technique: <ul style="list-style-type: none"> • All RC samples were collected from the RC rig and were collected beneath the cyclone and then passed through the cone splitter. • The samples were generally dry and all attempts were made to ensure the collected samples were dry. However, on deeper portions of the drillholes the samples were logged as moist and wet. • The cyclone and cone splitter were cleaned with compressed air at the end of every completed hole. • The sample sizes were appropriate to correctly represent the mineralisation based on the style of mineralisation, the thickness and consistency of intersections, the sampling methodology and percent value assay ranges for the primary elements. • Quality Control Procedures <ul style="list-style-type: none"> • A duplicated sample was collected every hole. • Certified Reference Material (CRM) samples were inserted in the field every approximately 50 samples containing a range of gold and base metal values. • Blank washed sand material was inserted in the field every approximately 50 samples. • Overall QAQC insertion rate of 1:10 samples • Laboratory repeats taken and standards inserted at pre-determined level specified by the laboratory. • Sample preparation in the Bureau Veritas (Canning Vale, Western Australia) laboratory: The samples are weighed dried for a minimum of 12 hours at 1000C, then crushed to -2mm using a jaw crusher, and pulverised by LM5 or disc pulveriser to -75 microns for a 40g Lead collection fire assay to create a homogeneous sub-sample. The pulp samples were also analysed with 4 acid digest induced Coupled Plasma Mass Spectrometer for 18 multi-elements • The sample sizes are considered appropriate to



Criteria	JORC Code explanation	Commentary
		correctly represent the mineralisation based on the style of mineralisation, the thickness and consistency of intersections, the sampling methodology and the assay value ranges expected for both gold and copper.
Quality of assay data and laboratory tests	<ul style="list-style-type: none"> The nature, quality and appropriateness of the assaying and laboratory procedures used and whether the technique is considered partial or total. For geophysical tools, spectrometers, handheld XRF instruments, etc, the parameters used in determining the analysis including instrument make and model, reading times, calibrations factors applied and their derivation, etc. Nature of quality control procedures adopted (e.g. standards, blanks, duplicates, external laboratory checks) and whether acceptable levels of accuracy (i.e. lack of bias) and precision have been established. 	<ul style="list-style-type: none"> Duplicates and samples containing standards are included in the analyses.
Verification of sampling and assaying	<ul style="list-style-type: none"> The verification of significant intersections by either independent or alternative company personnel. The use of twinned holes. Documentation of primary data, data entry procedures, data verification, data storage (physical and electronic) protocols. Discuss any adjustment to assay data. 	<ul style="list-style-type: none"> Significant intersections have been independently verified by alternative company personnel. The use of twinned holes has not been implemented and is not considered necessary at this stage of exploration. The Competent Person has visited the site and supervised all the drilling and sampling process in the field. All primary data related to logging and sampling are captured into Excel templates on palmtops or laptops. All paper copies of data have been stored. All data is sent to Perth and stored in the centralised Access database with a Data Shed front end which is managed by a consultant database geologist. No adjustments or calibrations have been made to any assay data, apart from resetting below detection values to half positive detection.



Criteria	JORC Code explanation	Commentary
<i>Location of data points</i>	<ul style="list-style-type: none"> • Accuracy and quality of surveys used to locate drill holes (collar and down-hole surveys), trenches, mine workings and other locations used in Mineral Resource estimation. • Specification of the grid system used. • Quality and adequacy of topographic control. 	<ul style="list-style-type: none"> • All collars were initially located by a Geologist using a conventional hand-held GPS. • Following completion of the drilling the hole collars will be independently surveyed by surveyors using a differential GPS for accurate collar location and RL with the digital data entered directly into the company database. • Downhole surveys are being completed on all the RC drill holes by the drillers. They used a Reflex EZ-Shot downhole multi-shot tool to collect the surveys every 30m down the hole. • The grid system for the Paris Prospect is MGA_GDA94 Zone 51. • Topographic data is collected by a hand-held GPS.
<i>Data spacing and distribution</i>	<ul style="list-style-type: none"> • Data spacing for reporting of Exploration Results. • Whether the data spacing and distribution is sufficient to establish the degree of geological and grade continuity appropriate for the Mineral Resource and Ore Reserve estimation procedure(s) and classifications applied. • Whether sample compositing has been applied. 	<ul style="list-style-type: none"> • As this programme was a first pass drilling programme across a number of different prospects there was considerable variation in the drill spacing and drillhole orientation. • The drill spacing is generally not sufficient to establish the degree of geological and grade continuity applied under the 2012 JORC code for the estimation of Mineral Resources. • Sample compositing was been applied to this drilling programme with 1m samples collected composited to 3m or 4m composites or less if specified.



Criteria	JORC Code explanation	Commentary
<i>Orientation of data in relation to geological structure</i>	<ul style="list-style-type: none"> Whether the orientation of sampling achieves unbiased sampling of possible structures and the extent to which this is known, considering the deposit type. If the relationship between the drilling orientation and the orientation of key mineralised structures is considered to have introduced a sampling bias, this should be assessed and reported if material. 	<ul style="list-style-type: none"> The attitude of the lithological units is predominantly North - South dipping to sub-vertical however at the Paris Project mineralised structures are often oriented on an approximately 290 degree orientation. Therefore, most holes were drilled with an azimuth of 190 to 220 degrees to intersect the structures at right angles to the orientation of the anticipated mineralised structures. Some holes will be drilled in other orientations to intersect specific mineralised structures, but always with an attempt to drill orthogonal to the strike of the interpreted structure. Due to locally varying intersection angles between drillholes and lithological units all results are defined as downhole widths. No drilling orientation and sampling bias has been recognised at this time and it is not considered to have introduced a sampling bias.
<i>Sample security</i>	<ul style="list-style-type: none"> The measures taken to ensure sample security. 	<ul style="list-style-type: none"> The samples collected were placed in calico bags and transported to the relevant Perth or Kalgoorlie laboratory by courier or company field personnel. Sample security was not considered a significant risk.
<i>Audits or reviews</i>	<ul style="list-style-type: none"> The results of any audits or reviews of sampling techniques and data. 	<ul style="list-style-type: none"> The Company database has been compiled from primary data by independent database consultants and was based on original assay data and historical database compilations. No review or audit of the data and sampling techniques has been completed.

Section 2 Reporting of Exploration Results

(Criteria listed in the preceding section also apply to this section.)

Criteria	JORC Code explanation	Commentary
----------	-----------------------	------------



Criteria	JORC Code explanation	Commentary
<i>Mineral tenement and land tenure status</i>	<ul style="list-style-type: none"> <i>Type, reference name/number, location and ownership including agreements or material issues with third parties such as joint ventures, partnerships, overriding royalties, native title interests, historical sites, wilderness or national park and environmental settings.</i> <i>The security of the tenure held at the time of reporting along with any known impediments to obtaining a licence to operate in the area.</i> 	<ul style="list-style-type: none"> The relevant tenements (M15/479 and M15/481) are both 100% owned by and registered to Torque Metals Limited. At the time of reporting, there are no known impediments to obtaining a licence to operate in the area and the tenements are in good standing.



Criteria	JORC Code explanation	Commentary
Exploration done by other parties	<ul style="list-style-type: none"> Acknowledgment and appraisal of exploration by other parties. 	<ul style="list-style-type: none"> In 1920, Paris Gold Mine Company was floated in Adelaide to take up a 12-month option over the mine area. Meanwhile just to the south, another company had an option over the Paris South Gold Mine, but soon abandoned it to focus attention on the Observation Gold Mine, one kilometre to the north. After only one month it abandoned this as well. The Paris Mine at the time contained 5 shafts and 2 costeans. Gold was said to be erratic in a quartz, schist, jasper lode jumbled by faults. At some point the deposit was excavated as an open pit. Western Mining Corporation (WMC) started to explore the Paris area in the 1960's and relied on aerial magnetics supported by geological mapping to assess mineralisation potential. This work identified the basalt/gabbro contact as the major control for Paris style gold-copper mineralisation and extensions to the ultramafic units that host the nickel mineralisation around the Kambalda Dome. In the early 1970s the area was the focus of both nickel and copper-zinc exploration. Reconnaissance diamond drilling for nickel was undertaken by WMC that drilled on 5 lines spaced at 800m across the interpreted basal contact position of the Democrat Hill Ultramafic and the BLF. The basal contact of the Kambalda Komatiite (and equivalents) is host to all the nickel mines in the Kambalda district and is the primary exploration area of interest for nickel mineralisation. Base metal exploration involved reconnaissance mapping, gossan search, soil, and stream sediment sampling. In 1973, DHD 101 was drilled to follow up a copper anomaly on the Democratic Shale. Results showed the anomalous gossan values to be associated with a sulphidic shale with values in the range 0.1 to 0.2% Cu and 0.8-1.0% Zn. During the early 1980s, Esso Exploration Australia and Aztec Exploration Limited conducted exploration programs along strike from the Paris Mine. Primary areas of interest was copper-zinc-(gold) mineralisation in the felsic volcanics. Work included geochemistry, geophysics, and drilling. The Boundary gossan was discovered, and later drill tested with a single



Criteria	JORC Code explanation	Commentary
		<p>diamond hole in 1984. This hole failed to locate the primary source of the anomalous surface geochemistry.</p> <ul style="list-style-type: none"> In 1988, Julia Mines conducted an intensive drilling program comprising aircore, RC and diamond holes concentrated around the Paris Mine. This work was successful in delineating extensions and parallel lodes to the known Paris mineralisation. both along strike and down plunge The Paris Gold Mine was developed and worked in 1989 by Julia Mines and produced 24koz gold, 17koz silver and 245t copper. Estimated recovered gold grade was 11.2g/t. In 1989/90, WMC completed a six-hole diamond drilling program aimed to test for depth extensions to the Paris mineralisation below the 180m depth. Results defined a narrow (1-2m) high-grade zone over 70m of strike and also intersected hanging wall lodes 10m and 30m stratigraphically above the interpreted main lode. This was the last drilling program to be carried out on the Paris Mine by WMC. From 1994 to 1999, WMC focussed their gold resource definition drilling on the HHH deposit and conducted a series of RC drilling campaigns resulting in 30m drill line spacings with holes every 10m to 20m along the lines. Elsewhere, exploration by WMC and later by St Ives Gold Mining Company identified a number of areas of interest based on favourable structural and geochemistry evaluations. The 7km x 1km long N-S trending soil anomaly at Strauss was systematically drill tested in 2000 and yielded encouraging results associated with the Butcher's Well Dolerite. Aircore drilling in 2005 focussed on the southern strike extensions of the mineralisation discovered in the 2000 program with limited success. Gold Fields Australia (St Ives Gold Mining Company) explored the area in 2008. The Paris and HHH deposits were tested as part of the SIGMC's broader air core program. The drilling (148 holes, 640m x 80m) focussed on poorly exposed differentiated dolerite proximal to



Criteria	JORC Code explanation	Commentary
		<p>interpreted intrusives. The exploration potential was supported by a structural interpretation which highlighted strong NNW trending magnetic features with the apparent intersection of crustal-scale lineaments observed in the regional gravity images. Anomalous values are associated with a felsic intrusive hosted by a sediment on the western margin of the area of interest.</p> <ul style="list-style-type: none"> Austral Pacific Pty Ltd acquired the Paris Gold Project from SIGMC in July 2015. Mineral Resource and Reserve estimates were compiled in-house and exploitation of the Paris and HHH deposits focussed on a staged approach with near term gold production as a priority and near mine exploration to follow.
Geology	<ul style="list-style-type: none"> <i>Deposit type, geological setting and style of mineralisation.</i> 	<ul style="list-style-type: none"> The Paris Gold Project covers a north-south trending belt of Achaean granite-greenstone terrain, and the majority of the package is currently situated to the east of the Boulder Lefroy Structural Zone (BLSZ). Consequently, the Parker Domain dominates the project geology, defined as existing east of the BLFZ and bounded to the east by the Mount Monger Fault. The Parker Domain comprises a series of ultramafic and mafic units interlayered with felsic volcanoclastic and sediments. The stratigraphic sequence is similar to the Kambalda Domain. Gold mineralisation is widespread, occurring in almost all parts of the craton, but almost entirely restricted to the supracrustal belts. Gold occurs as structurally and host-rock controlled lodes, sharply bounded high-grade quartz veins and associated lower-grade haloes of sulphide-altered wall rock. Mineralisation occurs in all rock types, although Fe-rich dolerite and basalt are the most common, and large granitic bodies are the least common hosts. Most deposits are accompanied by significant alteration, generally comprising an outer carbonate halo, intermediate to proximal potassic-mica and inner sulphide zones. The principal control on gold mineralisation is structure, at different scales, constraining both fluid flow and deposition positions.



Criteria	JORC Code explanation	Commentary
<i>Drill hole Information</i>	<ul style="list-style-type: none"> A summary of all information material to the understanding of the exploration results including a tabulation of the following information for all Material drill holes: <ul style="list-style-type: none"> easting and northing of the drill hole collar elevation or RL (Reduced Level – elevation above sea level in metres) of the drill hole collar dip and azimuth of the hole down hole length and interception depth hole length. If the exclusion of this information is justified on the basis that the information is not Material and this exclusion does not detract from the understanding of the report, the Competent Person should clearly explain why this is the case. 	<ul style="list-style-type: none"> Refer to this ASX Announcement.
<i>Data aggregation methods</i>	<ul style="list-style-type: none"> In reporting Exploration Results, weighting averaging techniques, maximum and/or minimum grade truncations (e.g. cutting of high grades) and cut-off grades are usually Material and should be stated. Where aggregate intercepts incorporate short lengths of high grade results and longer lengths of low grade results, the procedure used for such aggregation should be stated and some typical examples of such aggregations should be shown in detail. The assumptions used for any reporting of metal equivalent values should be clearly stated. 	<ul style="list-style-type: none"> No high-grade cuts have been applied to the reporting of exploration results. No metal equivalent values have been used.
<i>Relationship between mineralisation widths and intercept lengths</i>	<ul style="list-style-type: none"> These relationships are particularly important in the reporting of Exploration Results. If the geometry of the mineralisation with respect to the drill hole angle is known, its nature should be reported. If it is not known and only the down hole lengths are reported, there should be a clear statement to this effect (e.g. 'down hole length, true width not known'). 	<ul style="list-style-type: none"> As this programme was a first pass exploration drill programme across a number of different prospects there was considerable variation in the drill spacing and hole orientation. Due to locally varying intersection angles between drill holes and lithological units all results are defined as downhole widths. This drill spacing is also not sufficient to establish the degree of geological and grade continuity applied under the 2012 JORC Code.
<i>Diagrams</i>	<ul style="list-style-type: none"> Appropriate maps and sections (with scales) and tabulations of intercepts should be included for any significant discovery being reported These should include, but not be limited to a plan view of drill hole collar locations and appropriate sectional views. 	<ul style="list-style-type: none"> See attached figures within this announcement.
<i>Balanced reporting</i>	<ul style="list-style-type: none"> Where comprehensive reporting of all Exploration Results is not practicable, representative reporting of both low and high grades and/or widths should be practiced to avoid misleading reporting of Exploration Results. 	<ul style="list-style-type: none"> All significant intercepts and a summary of drill hole assay information are presented in Table 2 of Appendix 1 to this announcement.
<i>Other substantive exploration data</i>	<ul style="list-style-type: none"> Other exploration data, if meaningful and material, should be reported including (but not limited to): geological observations; geophysical survey results; geochemical survey results; bulk samples – size and method of treatment; metallurgical test results; bulk density, groundwater, geotechnical and rock characteristics; potential deleterious or contaminating substances. 	<ul style="list-style-type: none"> All meaningful and material information has been included in the body of this announcement.



Criteria	JORC Code explanation	Commentary
Further work	<ul style="list-style-type: none">• The nature and scale of planned further work (e.g. tests for lateral extensions or depth extensions or large-scale step-out drilling).• Diagrams clearly highlighting the areas of possible extensions, including the main geological interpretations and future drilling areas, provided this information is not commercially sensitive.	<ul style="list-style-type: none">• Refer to this announcement.• The extent of follow-up drilling has not yet been confirmed but will likely include further RC and possibly diamond drilling.

