

**19 February 2025**

**MEREENIE DEVELOPMENT WELL WM30 COMPLETED**

Central Petroleum Limited (**ASX:CTP**) (“**Central**” or “**Company**”) advises that drilling and completion of the second new Mereenie production well, WM30, is complete and Ventia Rig 101 was released on 19 February 2025.

WM30 was successfully air-drilled through the primary Pacoota-3 reservoir target to a total measured depth of 1,620m. The WM30 tie-in to the Mereenie production facilities is expected to be completed in early March.

As previously advised, the first well, WM29, was completed and tied-in last month. After an initial decline and equalisation with the gathering system, the well has stabilised at a production rate of ~5 TJ/d (100% JV), significantly exceeding the pre-drill expectation of circa 3 TJ/d per well.

Based on rig tests, the WM30 well is anticipated to perform in line with pre-drill expectations. The online rate will be determined once the well is tied-in and producing.

The two-well drilling program was delivered to an accelerated schedule and is forecast to be completed under budget.

Central’s Managing Director Leon Devaney said, “it is looking like a very successful drilling program in terms of costs, schedule and production rates. As we wrap up this important drilling program, we look forward to advancing further opportunities to increase production within a tight gas market to extract further value from our operating assets.”

A further update with the WM30 stabilised online rate will be provided in March.

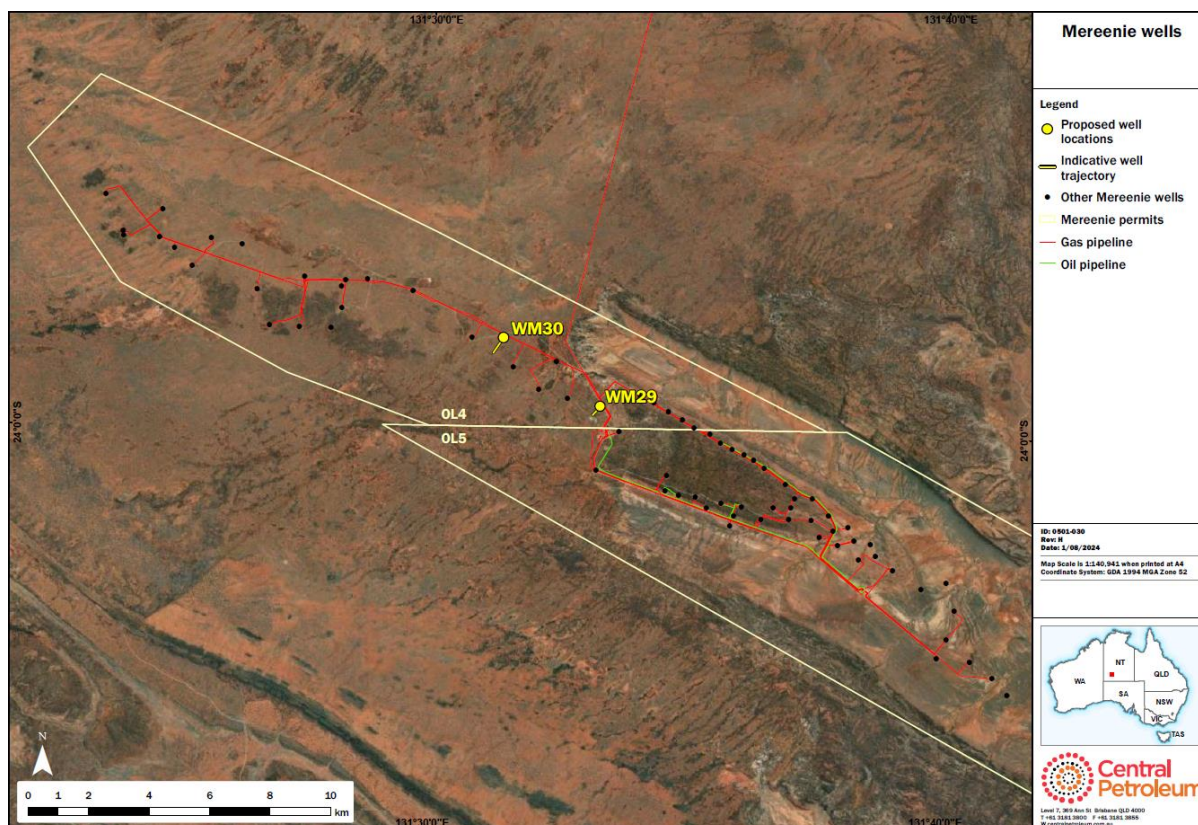


Figure 1 – Location of the two development wells

**-ends-**

This ASX announcement was approved and authorised for release by Leon Devaney, Managing Director and Chief Executive Officer.

#### About Central Petroleum

Central Petroleum Limited (Central) is an established ASX-listed Australian oil and gas producer (ASX: CTP) with exploration and appraisal permits in the Northern Territory (NT). Central has grown to become the largest onshore gas Operator in the NT, supplying residential and industrial customers in the NT and wider Australian east coast market.

Central is seeking to become a major domestic energy supplier, in addition to helium and naturally occurring hydrogen, with exploration, appraisal and development plans across 169,112 km<sup>2</sup> of tenements the NT, including some of Australia's largest known onshore conventional gas prospects in the Amadeus Basin.

#### General Legal Disclaimer and Explanation of Terms:

*This document is for information purposes only and is not investment or financial product advice nor intended for prospective investors and does not purport to provide all of the information an interested party may require in order to investigate the affairs of Central Petroleum Limited ("Company"). This document has been prepared without taking into account the investment objectives, financial situation or particular needs of any particular person. The data, information, opinions and conclusions ("Information") herein are subject to change without notice.*

*No representation or warranty, express or implied, is made as to the fairness, accuracy, completeness, correctness, likelihood of achievement or reasonableness of the Information contained in this document. To the maximum extent permitted by law, none of the Company or its agents, directors, officers, employees, advisors and consultants, nor any other person, accepts any liability, including, without limitation, any liability arising out of fault or negligence for any loss arising from the use of the Information contained in this document.*

*This document may contain forward-looking statements which include (but are not limited to) forecasts, prospects or returns. Forward looking statements are only predictions and are subject to risks, uncertainties and assumptions which may be outside the control of the Company and could cause actual results to differ from these statements. These risks, uncertainties and assumptions include (but are not limited to) funding, exploration, commodity prices, currency fluctuations, economic and financial market conditions, environmental risks, legislative or fiscal developments, political risks, project delay, approvals, cost estimates and other risk factors described from time-to-time in the Company's filings with the ASX. Actual facts, matters or circumstances may be different to those expressed or implied in this document. Given these uncertainties, readers are cautioned not to place reliance on forward looking statements. Subject to any continuing obligations under applicable law and the ASX Listing Rules, the Company and its agents, directors, officers, employees, advisors and consultants, nor any other person, do not undertake any obligation to update or revise any Information or any of the forward looking statements in this document. Sentences and phrases are forward looking statements when they include any tense from present to future or similar inflection words, such as (but not limited to) "believe", "understand", "estimate", "anticipate", "plan", "predict", "target", "may", "hope", "can", "will", "should", "expect", "intend", "projects", "is designed to", "with the intent", "potential", the negative of these words or such other variations thereon or comparable terminology or similar expressions of the future which may indicate a forward looking statement or conditional verbs such as "will", "should", "would", "may", "can" and "could" are generally forward-looking in nature and not historical facts.*

*No right of the Company or its subsidiaries shall be waived arising out of this document. All rights are reserved.*