

ASX RELEASE

LPI: ASX - 1 August 2019

LPI'S JV COMPANY MSB AND THE CHILEAN STATE-OWNED ENTERPRISE CODELCO SIGN MOU TO JOINTLY DEVELOP THE MARICUNGA SALAR LITHIUM PROJECT

Lithium Power International Limited (ASX: LPI) (LPI or the Company) today announced its joint venture company, Minera Salar Blanco S.A. (MSB) had entered into a non-binding Memorandum of Understanding (MOU) with the Chilean State-owned mining company, CODELCO.

The MOU will define terms for the negotiation of a definitive agreement to form a new joint venture allowing for the development of the Maricunga Salar into a world-class lithium brine producer.

Terms and details of the definitive agreement will be finalised in coming months. The agreement will be subject to mutual due diligence, detailed documentation, the establishment of a "NewCo" under Chilean corporate law and the finalisation of a "NewCo" Shareholders Agreement, among other conditions.

Lithium Power International's Chief Executive Officer, Cristobal Garcia-Huidobro, commented:

"The Company is extremely pleased to reach this MOU with CODELCO, following significant negotiations. The objective of the MOU is to define the terms for a definitive agreement to develop a joint project in the Maricunga Salar under a public-private alliance model, which would allow it to become the third lithium producer in Chile.

This JV would allow for a very robust and scalable project, and would also fast-track LPI's flagship Maricunga development, including provision of all the necessary permits. It would include CODELCO's key CEOL contract and the Nuclear Commission permit covering the entire salar, which would complement the expected approval of MSB's EIA before year-end. This means there will be certainty regarding the permitting of the project.

Consolidation of the mining concessions would include an option to increase production capacity and/or extend the life of the mine beyond its expected 20-year span, therefore creating additional value for all shareholders.

Focus will now be on the finalisation of the environmental approval process (EIA) and ongoing negotiations with potential financing and strategic partners. The aim is for initial construction to commence during the first half of 2020, after the finalisation of the terms of the definitive JV agreement".

....

About MSB

MSB is LPI's joint venture company based in Chile. MSB's Maricunga lithium brine project is Chile's highest grade and most advanced lithium project outside the Salar de Atacama. In January 2019, MSB submitted its Definitive Feasibility Study (DFS), which supports 20,000 tonnes per annum production of lithium carbonate equivalent (LCE) over 20 years, providing a pre-tax NPV of US\$1.302 billion. MSB submitted its Environmental Impact Assessment (EIA) in September 2018. The EIA is currently in its final stage of the evaluation process, with approval expected before year's end.

About CODELCO

CODELCO is Chile's state-owned copper mining company and is one of the largest copper producers in the world, with revenues of US\$14.3 billion in 2018. During its 46 years of operation, it has produced more than 59 million tons of copper and it currently has close to 18,000 employees.

For further information, please contact:

Cristobal Garcia-Huidobro – CEO; or Andrew Phillips – CFO

Lithium Power International

E: info@lithiumpowerinternational.com

Ph: +612 9276 1245

www.lithiumpowerinternational.com

@LithiumPowerLPI

Details of the properties under the MOU are illustrated in Figure 1.

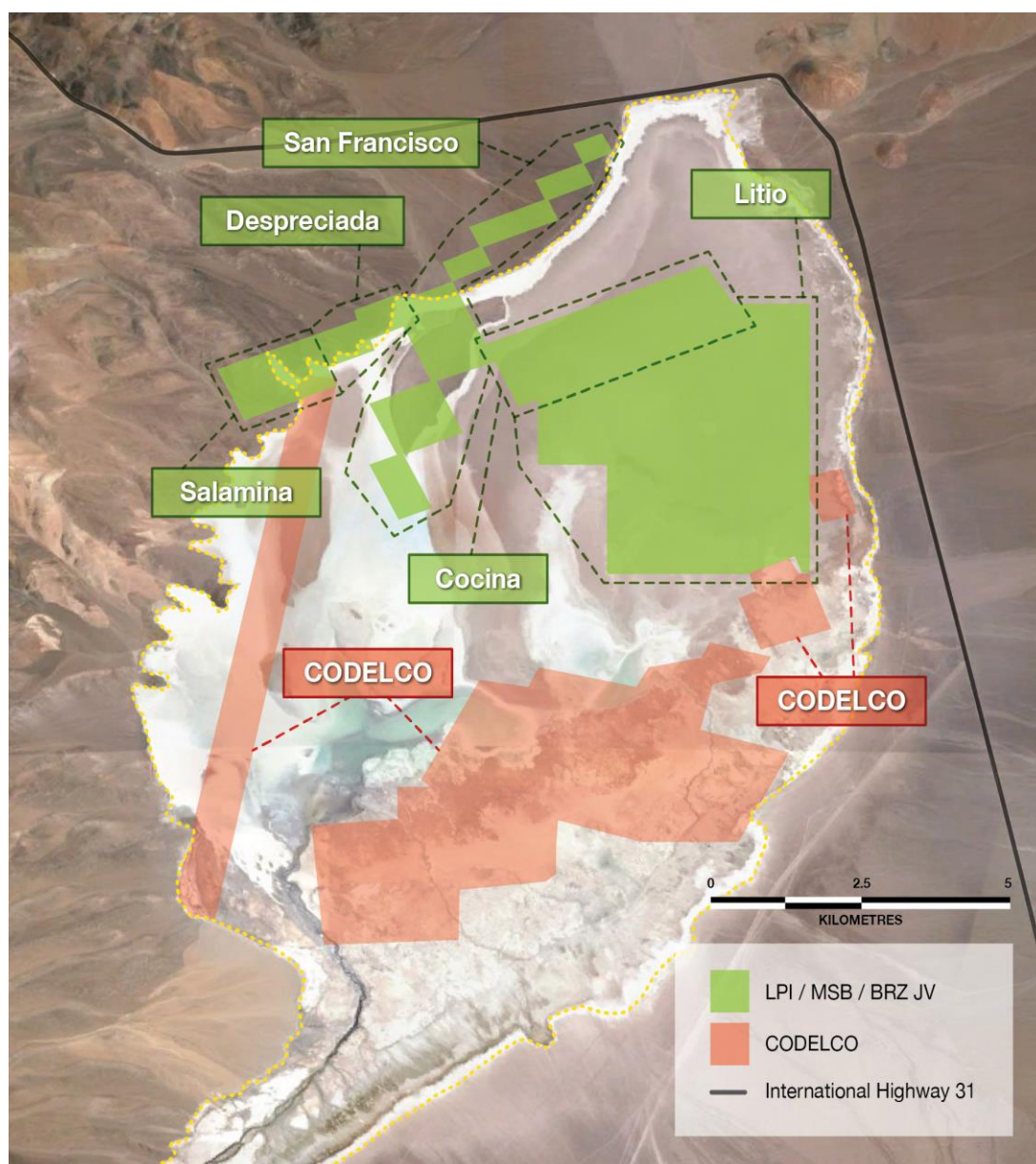


Figure 1: MSB & Codelco Tenements