



YOUR
SMILE.
OUR
VISION.

PRESENTED BY SDI

CONSUMER & FINANCIALS INVESTMENT CONFERENCE 2018

Samantha Cheetham CEO

CREATED BY SDI



CREATED BY SDI

○ LONG SUCCESSFUL OPERATING HISTORY

– founded in 1972 and listed on ASX in 1985 and we are Australia's largest dental manufacturer

○ SDI CONDUCTS RESEARCH AND DEVELOPMENT OF SPECIALIST DENTIST MATERIALS.

We undertake the development, manufacturing and marketing of dental materials and tooth whitening.

○ SDI SELLS TO 100+ COUNTRIES

on all continents and has sales teams and distribution in Australia, Brazil, Europe and North America



CREATED BY SDI

SDI

POSITIONED IN KEY DENTAL MARKETS



AUSTRALIA > MELBOURNE

Manufacturing, R&D,
Corporate Sales and Marketing
Local distribution and Direct
Exports

FTEE: 183



GERMANY > COLOGNE

Sales, warehouse and
distribution to Germany, UK and
other European countries

FTEE: 35



BRAZIL > SÃO PAULO

Packaging plant
Sales, warehouse and
distribution to Brazil and South
America

FTEE: 25



USA > CHICAGO

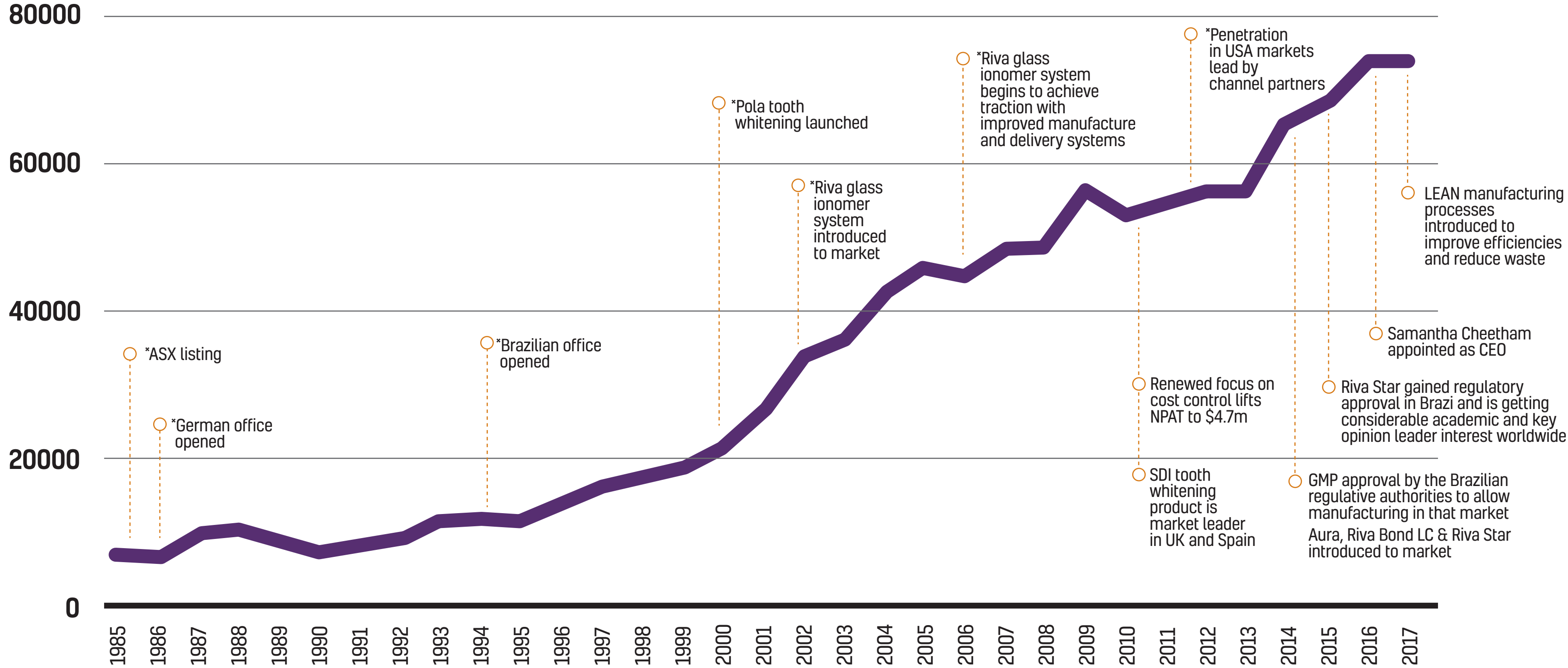
Sales, warehouse and
distribution to US and Canada

FTEE: 29

CREATED BY SDI



SOLID SALES GROWTH

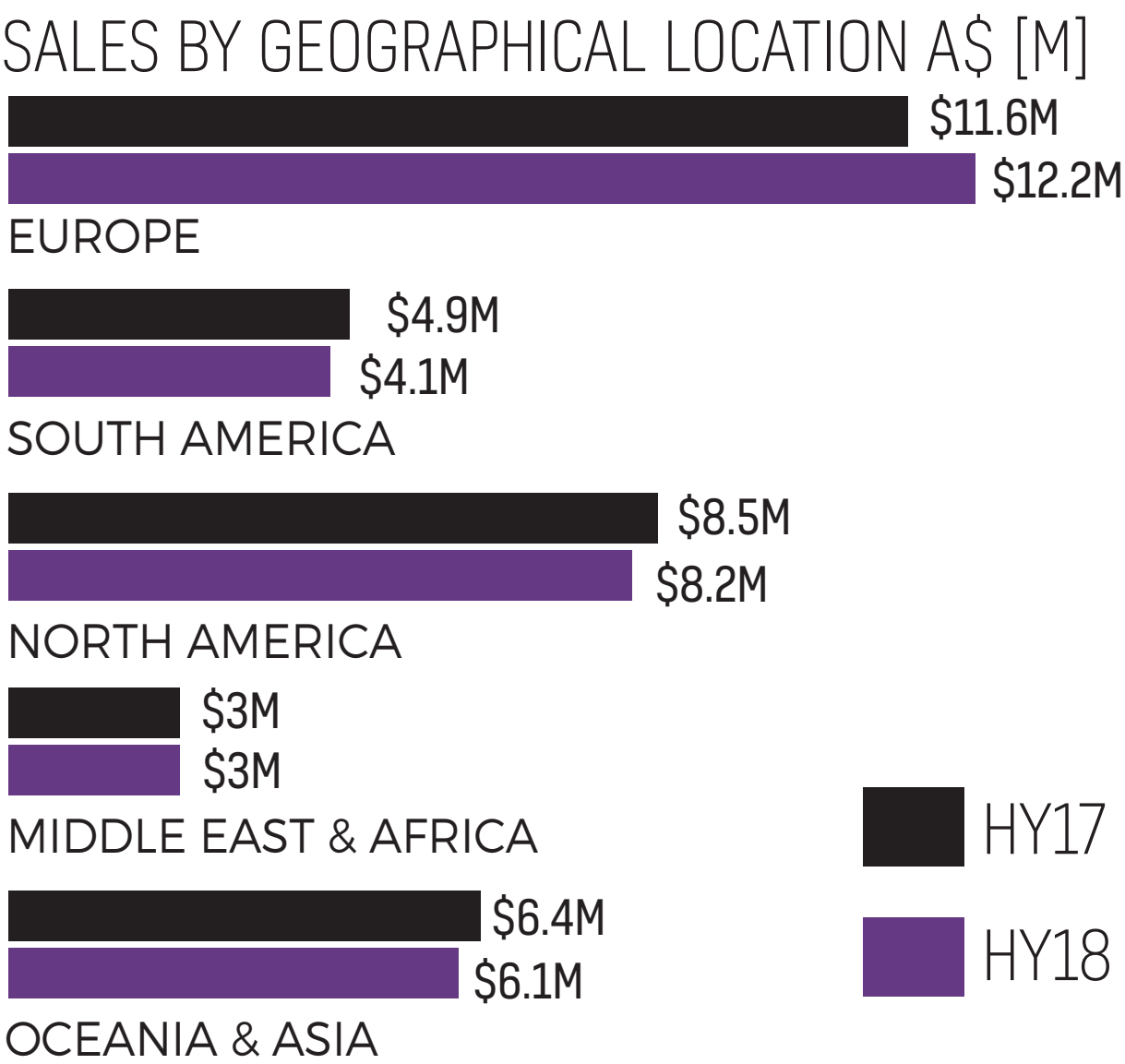
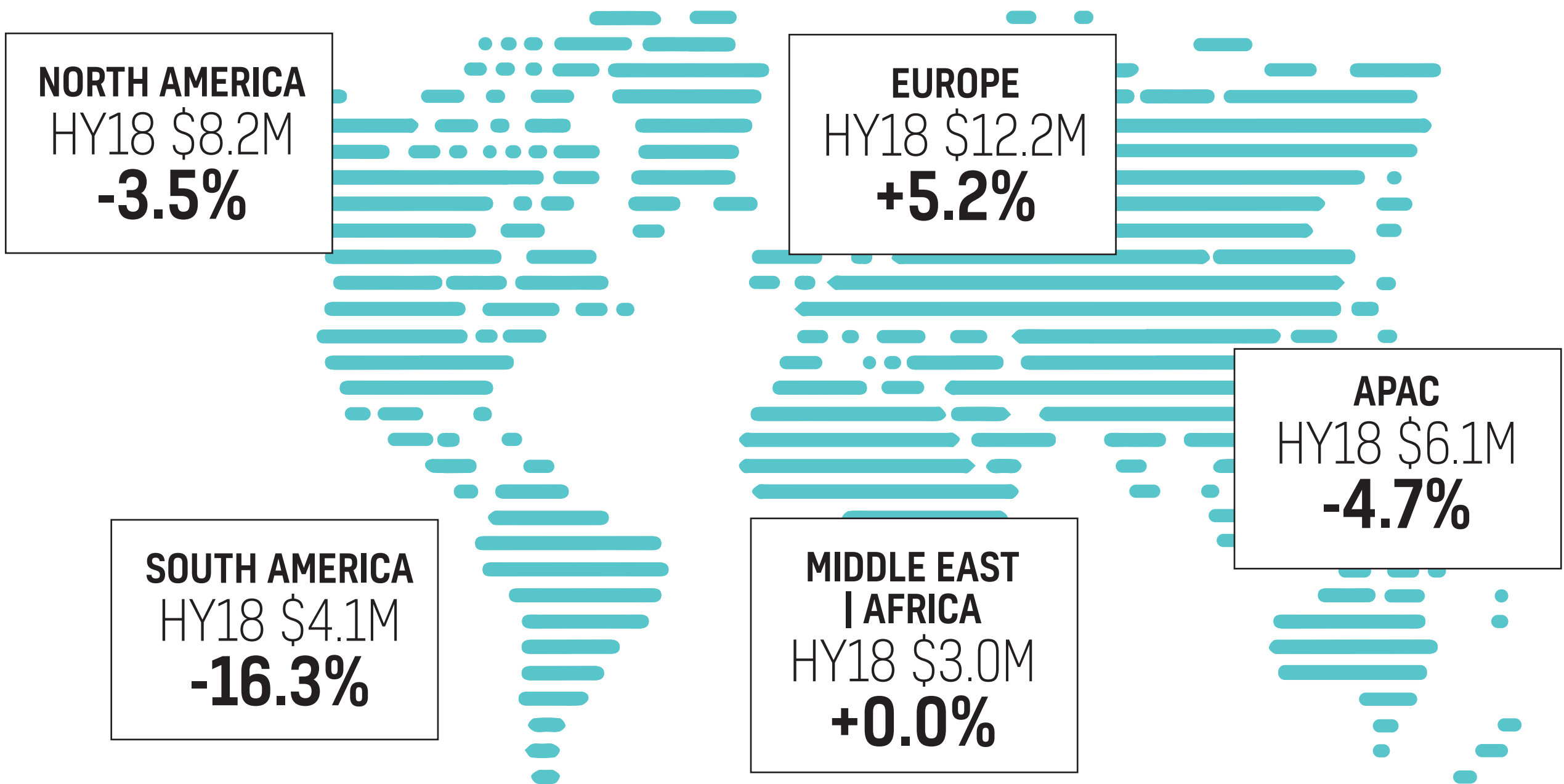


*SOURCE: SDI



GEOGRAPHICAL SALES

SALES IN AUD



CREATED BY SDI



HY18 HIGHLIGHTS

NPAT OF **\$1.2M** WITHIN GUIDANCE RANGE

ONGOING STRENGTH IN AESTHETICS UP **8.2%**

FULLY FRANKED INTERIM DIVIDEND UP **10.0%** ON HY17 TO 1.1 CPS

LEAN MANUFACTURING IMPLEMENTATION TO DELIVER **\$1.1M** ANNUALISED SAVINGS WHICH WILL BE FULLY REALISED OVER THIS CALENDER YEAR

\$1.1M ANNUALISED SAVINGS

Sales down **2.1%**, impacted by lower Amalgam and whitening sales from South American and UK markets

FY18 OUTLOOK: STRONGER SECOND HALF RESULTS

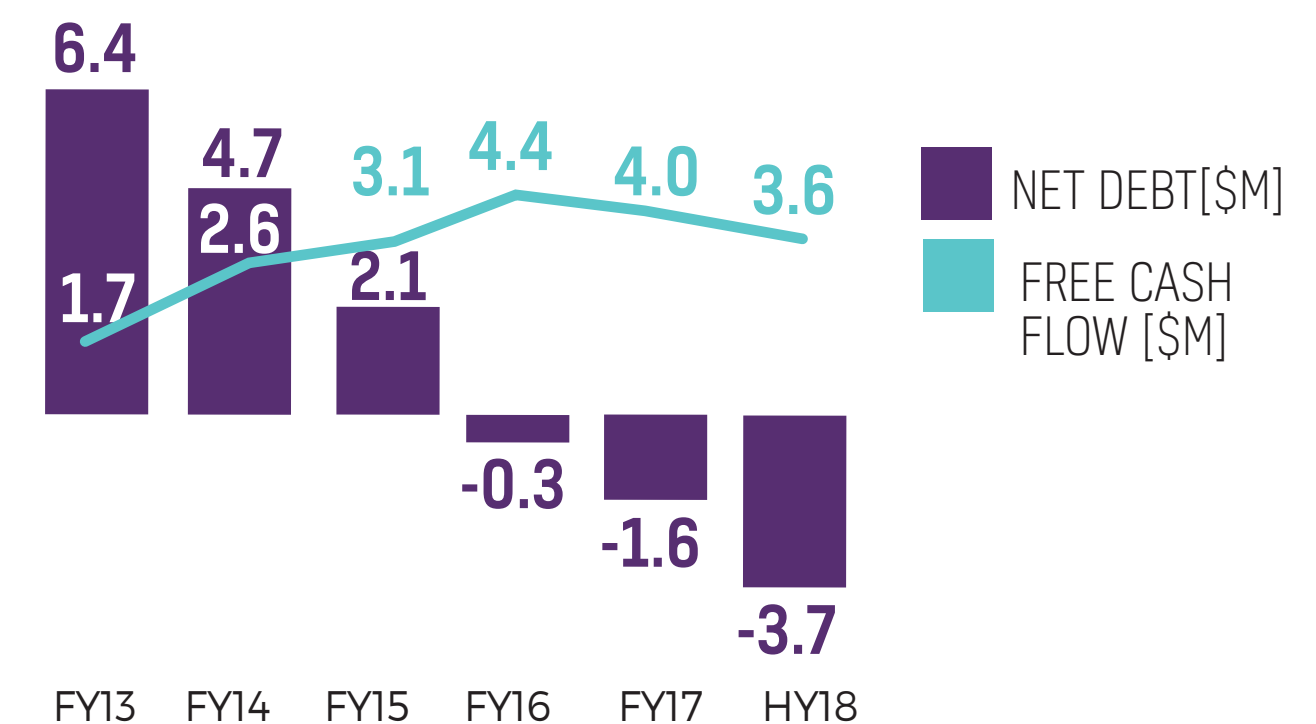
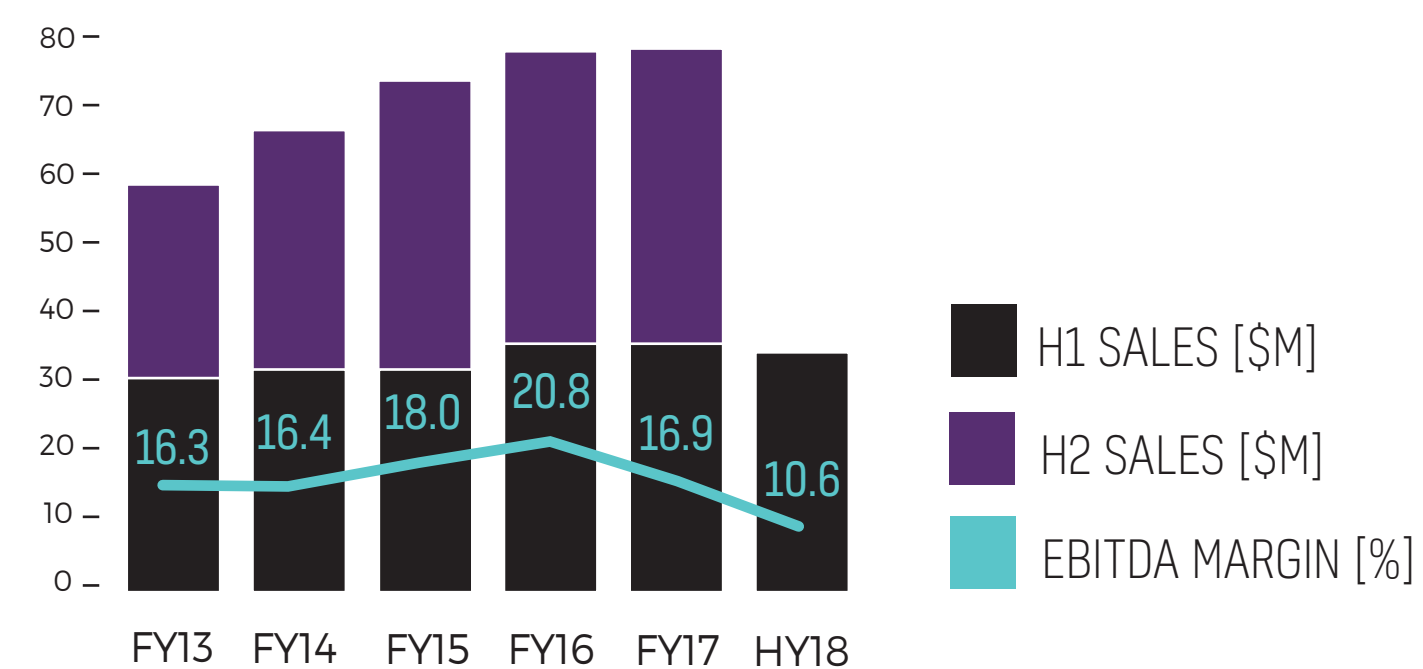
	HY18	HY17	CHANGE %
SALES	\$33.6m	\$34.4m	(2.1)
EBITDA	\$3.6m	\$4.9m	(27.7)
NPAT	\$1.2m	\$2.0m	(42.6)
EPS	0.97c	1.70c	(42.6)
DPS	1.1c	1.0c	10.0



STRONG FREE CASH FLOW

NET CASH POSITION WITH
STRONG FREE CASHFLOW

EBITDA MARGIN DOWN DUE
TO LOWER SALES

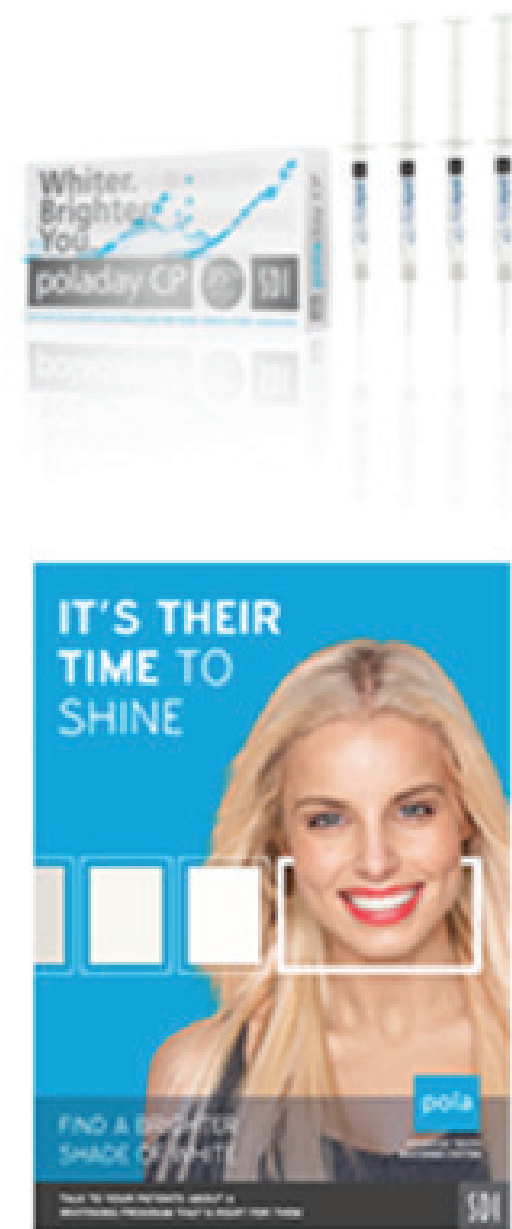


CREATED BY SDI



PRODUCT PORTFOLIO

WHITENING



AESTHETICS



EQUIPMENT



AMALGAM



CREATED BY SDI

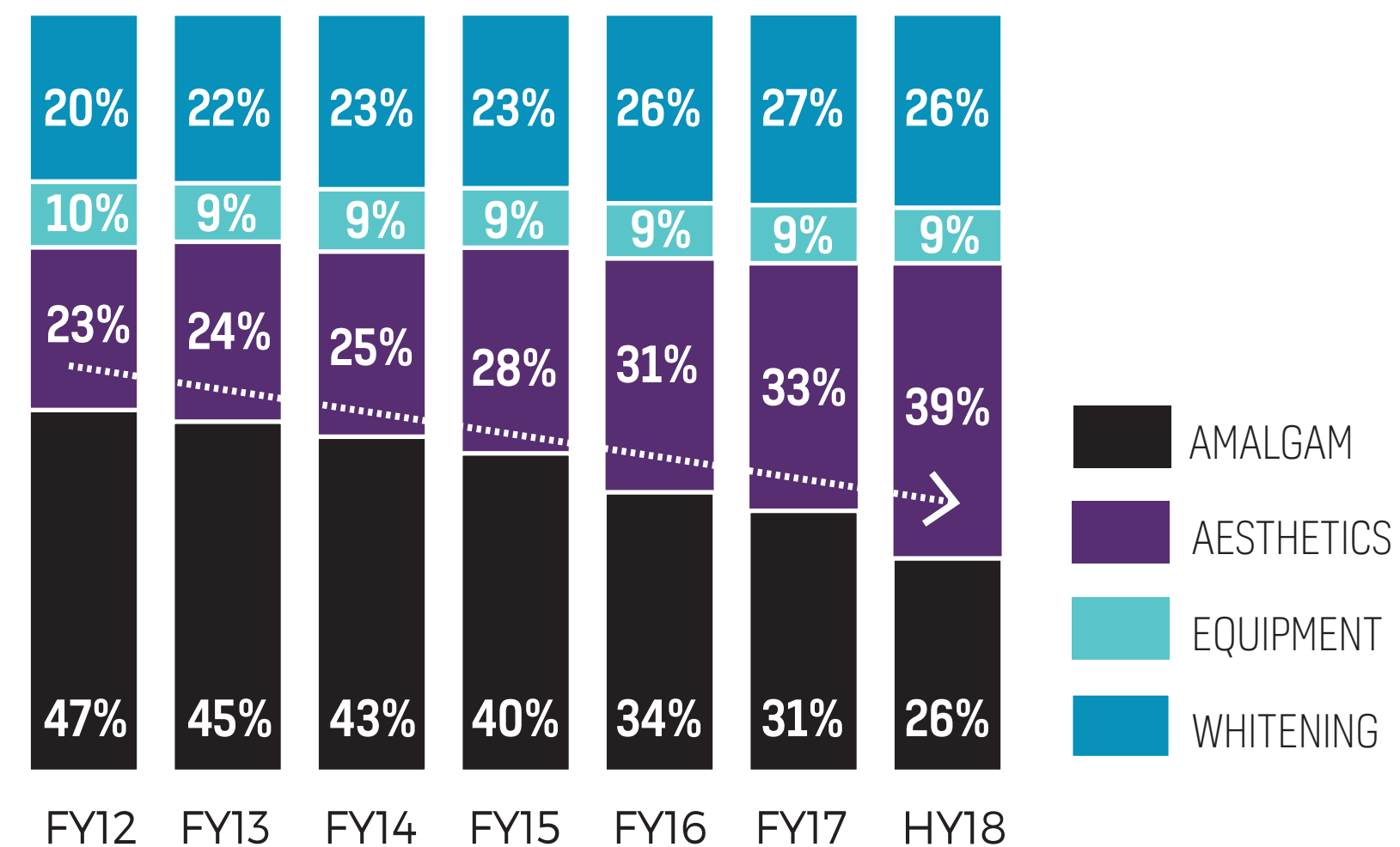


PRODUCT MIX SHIFT ACCELERATING

ALL SALES AND DEVELOPMENT
FOCUS ON AESTHETICS AND
WHITENING CATEGORIES
WHICH ACCOUNTED FOR **65.3%**

EQUIPMENT SALES OF **8.7%**
SUPPORTED BY RADII XPERT
LAUNCH

AMALGAM DECLINED TO **26.0%**
OF SALES



CREATED BY SDI



COMPETITIVE LANDSCAPE

WHITENING	AESTHETICS	EQUIPMENT	AMALGAM
	<div><div>SDI</div><div>Dentsply Sirona</div></div>		
	<div><div>ivoclar vivadent</div><div>Kerr</div></div>		
	<div><div>COLTENE</div><div>VOCO THE DENTALISTS</div></div> <div><div>3M Science. Applied to Life.™</div><div></div></div>		
	<div>ULTRADENT PRODUCTS, INC.</div>		
<div>PHILIPS ZOOM!</div>			

CREATED BY SDI



RESEARCH INNOVATION, RESULTS

RECENT PRODUCT RELEASES

AURA EASY - COMPOSITE

POLA LUMINATE - TOOTH
WHITENING

RIVA CEM - A PASTE/PASTE
CEMENT

RADII XPERT – SMALL EQUIPMENT

PRODUCT LAUNCHES
CONTINUE TO ROLLOUT
AROUND THE WORLD

1 – 2 NEW PRODUCTS PER YEAR TO DRIVE GROWTH

CONCENTRATING ON CATEGORIES
THAT DELIVER HIGH SALES
MARGINS

BUILDING ON SDI'S
WORLD-LEADING TECHNICAL
EXPERTISE, PARTICULARLY IN
GLASS IONOMERS AND TOOTH
WHITENING.

VERY FOCUSED R+D TEAMS
COLLABORATING CLOSELY WITH
RESEARCHERS AND INNOVATION
CENTRES GLOBALLY

RIVA STAR – FOCUS ON PUBLIC HEALTH PROGRAMS TO MINIMISE ADVERSE RESTORATIVE PROCEDURES

CREATED BY SDI



RIVA STAR

- TOOTH DECAY IS THE MOST COMMON HEALTH PROBLEM IN AUSTRALIA, USA AND MANY OTHER COUNTRIES
- SILVER DIAMINE FLUORIDE AND POTASSIUM IODIDE BASED PRODUCT
- SDI HAS A WORLDWIDE PATENT
- DENTAL HEALTH SERVICES VICTORIA – STUDY ON 500 CHILDREN WHO WOULD NORMALLY BE SENT TO ROYAL CHILDREN'S HOSPITAL FOR A GENERAL ANAESTHETIC AND SEVERE EXTRACTIONS

“If the trial is successful, it will change the way we manage tooth decay in young children and reduce oral health inequity for those that are in most need.”

DR YAWARY SAID (BITE MAGAZINE, OCTOBER 2017)



CREATED BY SDI

SDI

CORPORATE STRATEGY

- **INCREASE MANUFACTURING EFFICIENCIES** BY INCREASING INVESTMENT IN AUTOMATION AND CONTINUED EMPHASIS ON PROCESS IMPROVEMENTS
- **INNOVATION FOCUSED AROUND BUILDING A STRONG PIPELINE IN THE AESTHETIC, WHITENING AND EQUIPMENT PRODUCTS** AS DEMAND FOR QUALITY DENTISTRY INCREASES
- **INCREASING MARKET SHARE** IN A DECLINING AMALGAM MARKET
- **FOCUS ON HIGH QUALITY MARKETS** AS WELL AS POTENTIAL EMERGING MARKETS
- **MAINTAINING A HEALTHY BALANCE SHEET**
- **INCREASE BRAND REPUTATION**, AWARENESS AND BUILD EQUITY THROUGH RE-BRANDING AND RE-POSITIONING OF IMAGE AND PRODUCT PRESENCE

CREATED BY SDI



OUTLOOK

FY18 OUTLOOK: STRONGER SECOND HALF RESULT

IN FY18 WE EXPECT CONTINUED SALES GROWTH IN NON-AMALGAM PRODUCTS (74% OF SALES), IMPACTED BY ONGOING WEAKNESS IN THE MARKET FOR AMALGAM.

LEAN MANUFACTURING IMPLEMENTATION TO DELIVER \$1.1M ANNUALISED SAVINGS – QUALITY CONTROL, R&D SUPPORT TO MANUFACTURING, WAREHOUSING, PROCESS RATIONALISATION – WHICH WILL BE FULLY REALISED OVER THIS CALENDER YEAR

INCREASING SALES TO SPECIAL MARKETS:

- Large group practices
- Corporates
- Public institutions

GROWTH OPPORTUNITY IN DEVELOPING MARKETS AS DEMAND FOR QUALITY DENTISTRY INCREASES

CREATED BY SDI

SDI

QUESTIONS

CREATED BY SDI

SDI

DISCLAIMER

This Presentation contains summary information about SDI Limited (SDI) and its subsidiaries and their activities. The information in this Presentation does not purport to be complete. It should be read in conjunction with SDI's other periodic and continuous disclosure announcements lodged with the Australian Securities Exchange, which are available at www.asx.com.au. The information contained in this Presentation is not investment or financial product advice and has been prepared without taking into account the investment objectives, financial situation or particular needs of any particular person. Before making an investment decision, investors should consider the appropriateness of the information having regard to their own investment objectives, financial situation and needs and seek independent professional advice appropriate to their jurisdiction and circumstances. To the extent permitted by law, no responsibility for any loss arising in any way from anyone acting or refraining from acting as a result of this information is accepted by SDI, any of its related bodies corporate or its Directors, officers, employees, professional advisors and agents (Related Parties). No representation or warranty, express or implied, is made by any person, including SDI and its Related Parties, as to the fairness, accuracy, completeness or correctness of the information, opinions and conclusions contained in this Presentation. An investment in SDI securities is subject to investment and other known and unknown risks, some of which are beyond the control of SDI or its Directors. SDI does not guarantee any particular rate of return or the performance of SDI securities. Past performance information given in this Presentation is given for illustrative purposes only and should not be relied upon as (and is not) an indication of future performance. This Presentation contains certain forward-looking statements with respect to the financial condition, results of operations and business of SDI and associated entities of SDI and certain plans and objectives of the management of SDI. Forward-looking statements can be identified by the use of forward-looking terminology, including, without limitation, the terms "believes", "estimates", "anticipates", "expects", "predicts", "intends", "plans", "goals", "targets", "aims", "outlook", "guidance", "forecasts", "may", "will", "would", "could" or "should" or, in each case, their negative or other variations or comparable terminology. These forward-looking statements include all matters that are not historical facts. Such forward-looking statements involve known and unknown risks, uncertainties and other factors which because of their nature may cause the actual results or performance of SDI to be materially different from the results or performance expressed or implied by such forward-looking statements. Such forward-looking statements are based on numerous assumptions regarding SDI's present and future business strategies and the political, regulatory and economic environment in which SDI will operate in the future, which may not be reasonable, and are not guarantees or predictions of future performance. No representation or warranty is made that any of these statements or forecasts (express or implied) will come to pass or that any forecast result will be achieved. Forward-looking statements speak only as at the date of this Presentation and to the full extent permitted by law, SDI and its Related Parties disclaim any obligation or undertaking to release any updates or revisions to information to reflect any change in any of the information contained in this Presentation (including, but not limited to, any assumptions or expectations set out in this Presentation). Statutory profit is prepared in accordance with the Corporations Act 2001 and the Australian Accounting Standards, which comply with the International Financial Reporting Standards (IFRS). Underlying profit is categorised as non-IFRS financial information and therefore has been presented in compliance with Australian Securities and Investments Commission Regulatory Guide 230 – Disclosing non-IFRS information, issued in December 2011. All figures in this Presentation are A\$ unless stated otherwise and all market shares are estimates only. A number of figures, amounts, percentages, estimates, calculations of value and fractions are subject to the effect of rounding. Accordingly, the actual calculations of these figures may differ from figures set out in this Presentation.

CREATED BY SDI





THANK YOU

CREATED BY SDI

SDI